

**LIST OF FIGURES**

Fig 2.1	Environmental Administration Map .....	F-1
Fig 2.2	Layout Plan of Equipment .....	F-2
Fig 2.3	Organization Chart of EEAA.....	F-5
Fig 2.4	Organization Chart of RBO .....	F-6
Fig 2.5	Organization Chart of CCC .....	F-6



Arab Republic of Egypt  
Ministry of State for Environmental Affairs  
Egyptian Environmental Affairs Agency

## Regional Branches Office of EEAA

### Legend R.B.O'S of EEAA

- Regional Branch of Greater Cairo and Fayum
- Regional Branch of West of Delta
- Regional Branch of Medal of Delta
- Regional Branch of East of Delta
- Regional Branch of Canal and Sinal
- Regional Branch of North of Upper Egypt
- Regional Branch of South of Upper Egypt
- Regional Branch of Red Sea

Projection: Geographic (latitude , longitude).  
Base map: Egypt  
Scale: 1: 7500,000  
Prepared by : GIS Unit-DICC  
Data Source : Center Department of Branches Affairs



40 0 40 80 120 160 200 Kilometers

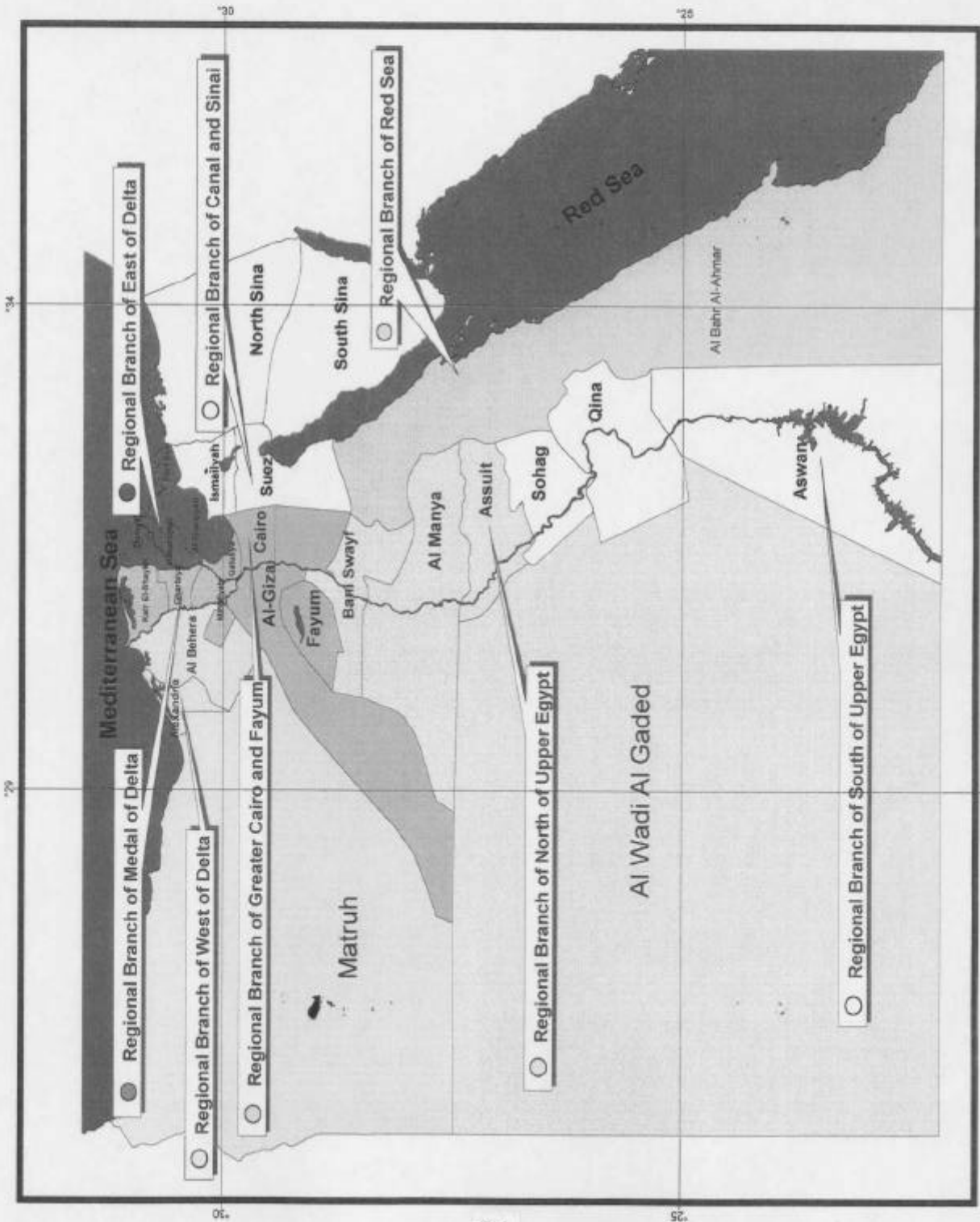
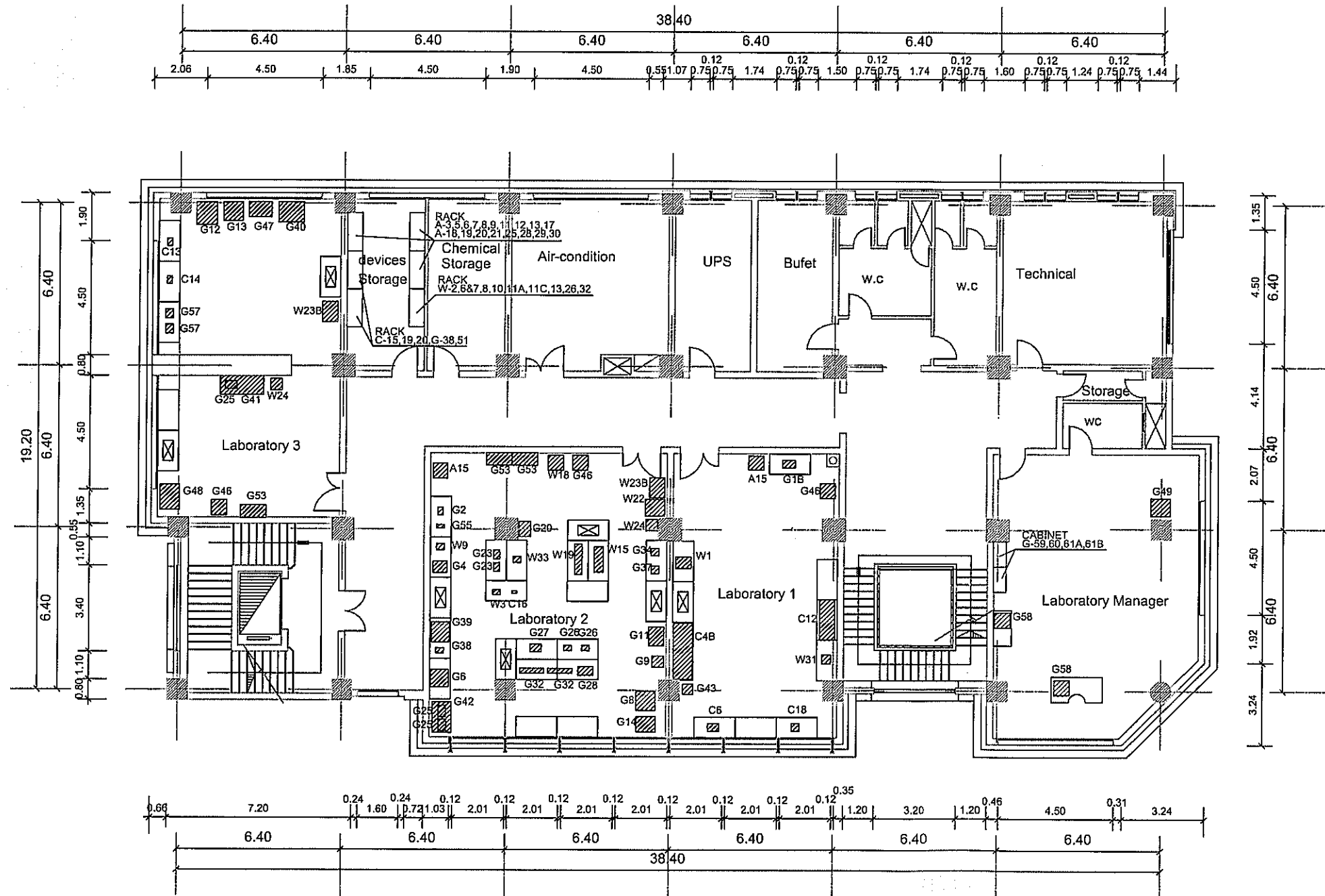


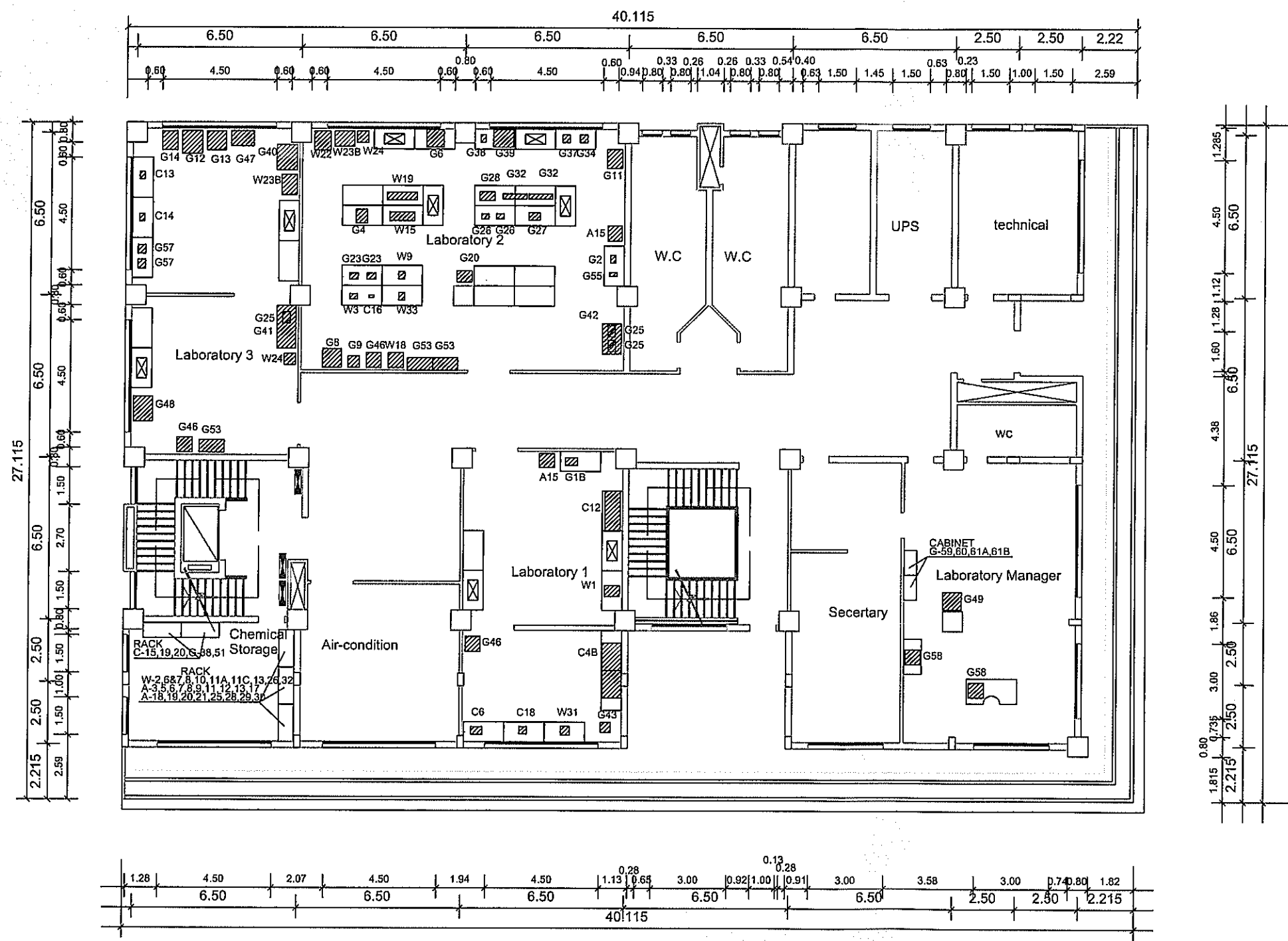
Fig 2.1 Environmental Administration Map



NO.	EQUIPMENT
C-4B	A.A.S.Flameless type With Flame Compartment
C-6	UV/VIS Spectrophotometer (Double Beam)
C-12	Ion Chromatograph
C-13	Stereoscopic Microscope
C-14	Microscope
C-15	Handy Type pH Meter
C-16	Laboratory pH Meter
C-18	Mercury Analyzer
C-19	Glass Wares Set
C-20	Reagents (w/Standard Samples)
G-1B	Semi-Micro Analysis Balance-2
G-2	Macro Analysis Balance
G-4	Tabletop Type Centrifuge
G-6	Muffle Furnace (for Organic)
G-8	Constant Temperature Oven
G-9	Middle Temperature Oven
G-11	Oven for Glass Wares (Dryer)
G-12	Autoclave (Vertical Type)
G-13	Incubator
G-14	Low Temperature Incubator
G-20	Shaker (Middle)
G-23	Mixer
G-25	Hot Plate (Small)
G-26	Magnetic Stirrer (w/Hop Plate)
G-27	Multi Magnetic Stirrer w/Magnetic Sets
G-28	Constant Temperature Water Bath
G-32	Water Bath
G-34	Ultrasonic Cleaner
G-37	Ultrasonic Pipette Cleaner
G-38	Ion Exchanger
G-39	Water Distillation Unit
G-40	Clean Bench
G-41	Draft Chamber w/Gas Cleaning Device
G-42	Draft Chamber
G-43	AC Stabilizer
G-46	Refrigerator
G-47	Freezer
G-48	Ice Maker (Cube Ice)
G-49	Copy Machine
G-50	Monitoring Car*
G-51	Tool Set
G-53	Locker for Reagents
G-55	Balance (6kg)
G-57	Colony Counter
G-58	Personal Computer (Arabic/English)
G-59	Video Camera w/Video Monitor Unit
G-60	Camera
G-61A	Over Head Project (w/Screen)
G-61B	Data Show Projector Equipment
W-1	Total Organic Carbon Analyzer
W-2	Handy Type DO Meter
W-3	Laboratory Type DO Meter
W-6&7	Tint Meter/Turbidity Meter
W-8	Handy Type Conductivity/Temp. Meter
W-9	Conductivity Meter
W-10	Salt Meter (Na Ion Meter)
W-11A	Water Sampler(Hydroli Type)
W-11C	Water Sampler( Type)
W-13	Ekman Barge Grab Sampler
W-15	Distillation Apparatus(for CN,NH4,F)
W-18	BOD Analyzing Apparatus(Incubator)
W-19	COD Analyzing Apparatus w/Closed Reflux (Cr)
W-22	Wastewater Treatment Equipment
W-23B	Portable Waste Water Chest (90L)
W-24	Portable Waste Water Chest (50L)
W-26	Water Quality Analysis (Temp,pH,Conductivity,Turbidity and DO)
W-31	Ion Analyzer w/Electrode Set
W-32	Ion Analyzer w/Electrode Set
W-33	Vacuum Filter w/Manifold
A-1A	SO2 Monitor(UV Fluorescence Method)*
A-1B	Nox Monitor(Chemluminescence Method)*
A-1C	CO Monitor (Non-dispersive IR Method)*
A-1D	Ozone Monitor (UV Absorption Method)*
A-1E	Hydrocarbon Monitor(FID-GC Method)*
A-1F	Dust Monitor (Beta-ray Absorption)*
A-1G	Combined Wind Vane and Anemometer*
A-1H	Thermo-hygrometer*
A-1J	Solar Radiation Meter*
A-1K	Data Logger*
A-1L	Standard Voltage Regulator*
A-1M	Chassis Cabin*
A-1N	Traction car*
A-7(A-10)	Zero Gas Generator
A-8(A-15)	Span Gas Dilutor
A-25(A-10)	Standard Gas w/Cylinder & Regulator
A-3	Portable Black Fume Monitor
A-5	Wet Type Gas Collector (for Sox, HCl)
A-6	Gas Sampler (Manual & Auto) w/Detector Tube
A-9	Stack Gas Sampler (for Dust)
A-11	Gas Meter
A-12	Rotor Meter
A-13	Mass Flow Meter
A-15	Auto-Dry Desiccator
A-17	Portable Auto HC/CO Analyzer for Stack Gas
A-18	Portable Auto. SO2 Analyzer for Stack Gas
A-19	Portable Auto. NOx Analyzer for Stack Gas
A-20	High-volume Air Sampler
A-21	Low-volume Air Sampler
A-28	Ambient Air Analyzer
A-29	Total Dust Meter (Light-scattering)
A-30	PM 10 Meter (Portable)

Fig 2.2(1/3) Layout Plan of Equipment (Asyut)

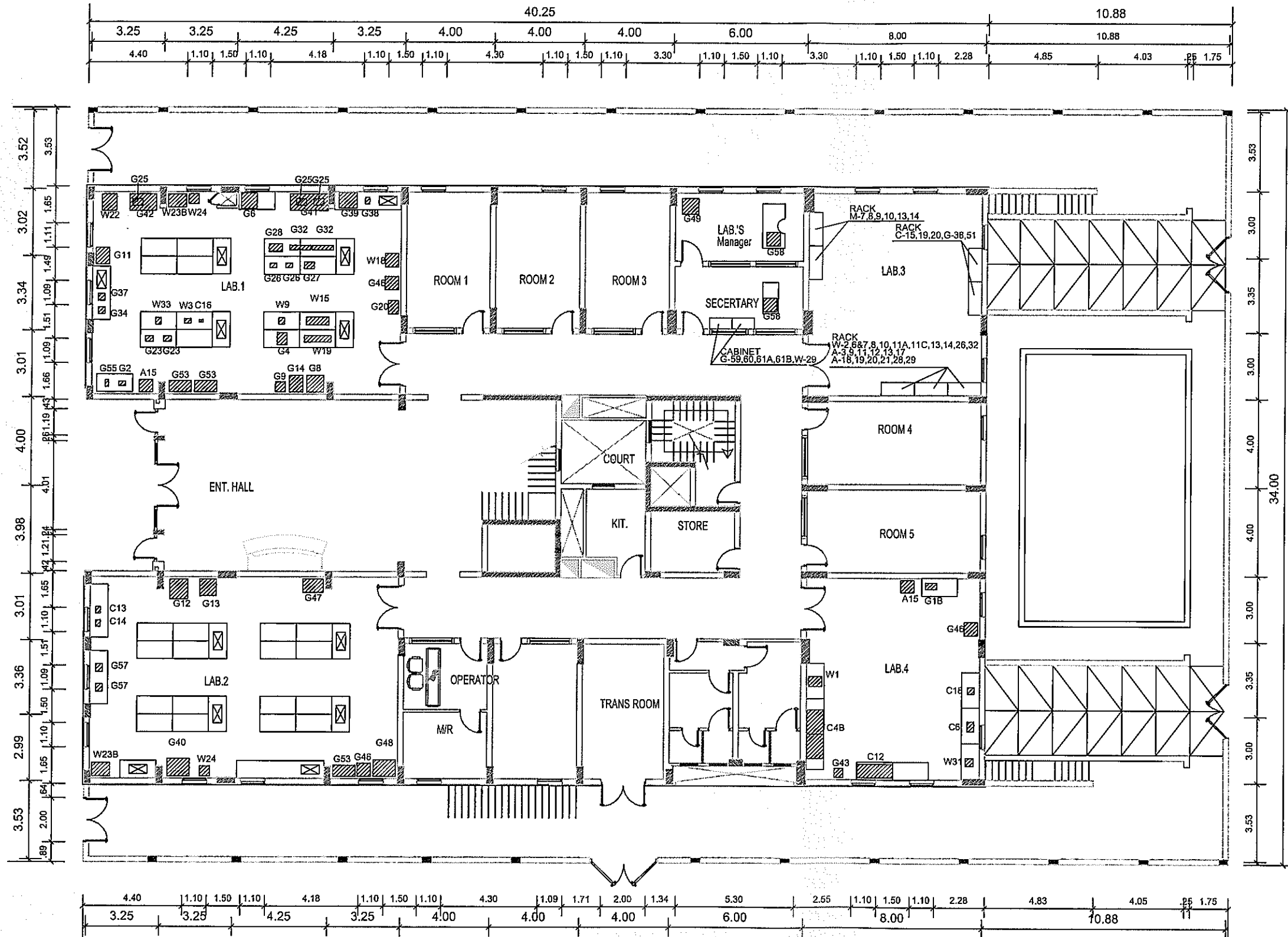
COLLABORATING ARCHITECTURAL-ENGINEERING FIRM	PROJECT TITLE THE PROJECT FOR SUPPLY OF EQUIPMENT FOR REGIONAL ENVIRONMENTAL MONITORING NETWORK(PhaseII) IN THE ARAB REPUBLIC OF EGYPT	OWNER JAPAN INTERNATIONAL COOPERATION AGENCY	CONSULTANT CTI ENGINEERING INTERNATIONAL CO.,LTD. GREEN BLUE CORPORATION	DATE	DRAWING TITLE LAYOUT PLAN OF EQUIPMENT AST SITE ( FIRST FLOOR )	SCALE 1:200	SHEET NO.	
				CHECKED				PROJECT NO.
				DRAWN				



NO.	EQUIPMENT
C-4B	A.A.S.Flameless type with Flame Compartment
C-6	UV/VIS Spectrophotometer (Double Beam)
C-12	Ion Chromatograph
C-13	Stereoscopic Microscope
C-14	Microscope
C-15	Handy Type pH Meter
C-16	Laboratory pH Meter
C-18	Mercury Analyzer
C-19	Glass Wares Set
C-20	Reagents (w/Standard Samples)
G-1B	Semi-Micro Analysis Balance-2
G-2	Macro Analysis Balance
G-4	Tabletop Type Centrifuge
G-6	Muffle Furnace (for Organic)
G-8	Constant Temperature Oven
G-9	Middle Temperature Oven
G-11	Oven for Glass Wares (Dryer)
G-12	Autoclave (Vertical Type)
G-13	Incubator
G-14	Low Temperature Incubator
G-20	Shaker (Middle)
G-23	Mixer
G-25	Hot Plate (Small)
G-26	Magnetic Stirrer (w/Hop Plate)
G-27	Multi Magnetic Stirrer w/Magnetic Sets
G-28	Constant Temperature Water Bath
G-32	Water Bath
G-34	Ultrasonic Cleaner
G-37	Ultrasonic Pipette Cleaner
G-38	Ion Exchanger
G-39	Water Distillation Unit
G-40	Clean Bench
G-41	Draft Chamber w/Gas Cleaning Device
G-42	Draft Chamber
G-43	AC Stabilizer
G-46	Refrigerator
G-47	Freezer
G-48	Ice Maker (Cube Ice)
G-49	Copy Machine
G-50	Monitoring Car*
G-51	Tool Set
G-53	Locker for Reagents
G-55	Balance (6kg)
G-57	Colony Counter
G-58	Personal Computer (Arabic/English)
G-59	Video Camera w/Video Monitor Unit
G-60	Camera
G-61A	Over Head Project (w/Screen)
G-61B	Data Show Projector Equipment
W-1	Total Organic Carbon Analyzer
W-2	Handy Type DO Meter
W-3	Laboratory Type DO Meter
W-6&7	Tint Meter/Turbidity Meter
W-8	Handy Type Conductivity/Temp. Meter
W-9	Conductivity Meter
W-10	Salt Meter (Na Ion Meter)
W-11A	Water Sampler (Hydrox Type)
W-11C	Water Sampler (Type)
W-13	Ekman Barge Grab Sampler
W-15	Distillation Apparatus (for CN, NH4, F)
W-18	BOD Analyzing Apparatus (Incubator)
W-19	COD Analyzing Apparatus w/Closed Reflux (Cr)
W-22	Wastewater Treatment Equipment
W-23B	Portable Waste Water Chest (50L)
W-24	Portable Waste Water Chest (50L)
W-26	Water Quality Analysis (Temp, pH, Conductivity, Turbidity and DO)
W-31	Ion Analyzer w/Electrode Set
W-32	Ion Analyzer w/Electrode Set
W-33	Vacuum Filter w/Manifold
A-1A	SO2 Monitor (UV Fluorescence Method)*
A-1B	Nox Monitor (Chemiluminescence Method)*
A-1C	CO Monitor (Non-dispersive IR Method)*
A-1D	Ozone Monitor (UV Absorption Method)*
A-1E	Hydrocarbon Monitor (FID-GC Method)*
A-1F	Dust Monitor (Beta-ray Absorption)*
A-1G	Combined Wind Vane and Anemometer*
A-1H	Thermo-hygrometer*
A-1J	Solar Radiation Meter*
A-1K	Data Logger*
A-1L	Standard Voltage Regulator*
A-1M	Chassis Cabin*
A-1N	Traction car*
A-7(A-10)	Zero Gas Generator
A-8(A-10)	Span Gas Dilutor
A-23(A-10)	Standard Gas w/Cylinder & Regulator
A-3	Portable Black Fume Monitor
A-5	Wet Type Gas Collector (for Sox, HCl)
A-6	Gas Sampler (Manual & Auto) w/Detector Tube
A-9	Stack Gas Sampler (for Dust)
A-11	Gas Meter
A-12	Rotor Meter
A-13	Mass Flow Meter
A-15	Auto-Dry Desiccator
A-17	Portable Auto HC/CO Analyzer for Stack Gas
A-18	Portable Auto. SO2 Analyzer for Stack Gas
A-19	Portable Auto. NOx Analyzer for Stack Gas
A-20	High-volume Air Sampler
A-21	Low-volume Air Sampler
A-28	Ambient Air Analyzer
A-29	Total Dust Meter (Light-scattering)
A-30	PM 10 Meter (Portable)

Fig 2.2(2/3) Layout Plan of Equipment (Aswan)

COLLABORATING ARCHITECTURAL-ENGINEERING FIRM	PROJECT TITLE THE PROJECT FOR SUPPLY OF EQUIPMENT FOR REGIONAL ENVIRONMENTAL MONITORING NETWORK(Phase II) IN THE ARAB REPUBLIC OF EGYPT	OWNER JAPAN INTERNATIONAL COOPERATION AGENCY	CONSULTANT CTI ENGINEERING INTERNATIONAL CO.,LTD. GREEN BLUE CORPORATION	DATE	DRAWING TITLE LAYOUT PLAN OF EQUIPMENT ASW SITE ( FIRST FLOOR )	SCALE 1:200	SHEET NO. PROJECT NO.
				CHECKED			
				DRAWN			

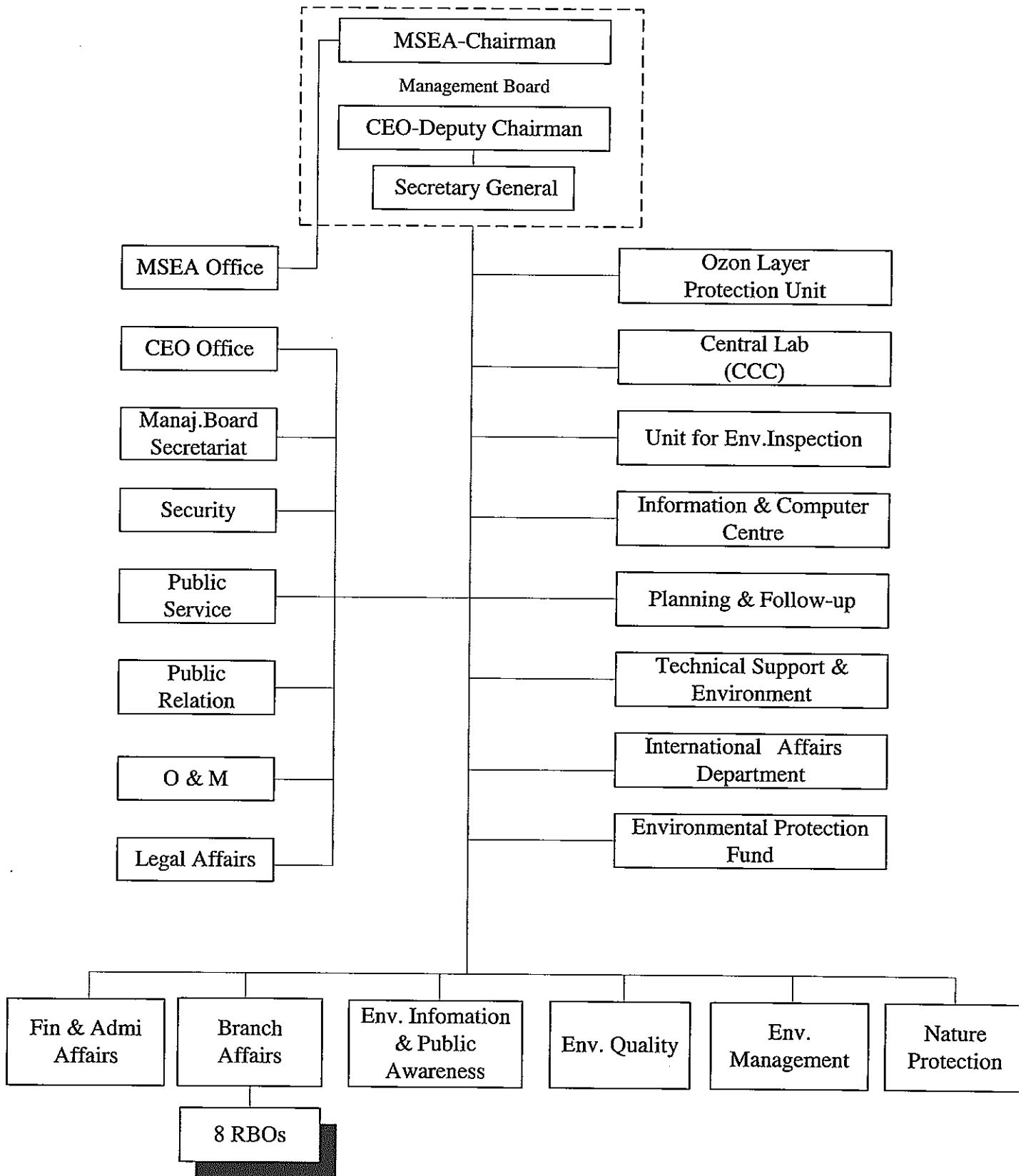


NO.	EQUIPMENT
C-4B	A.A.S.Flameless type with Flame Compartment
C-6	UV/VIS Spectrophotometer (Double Beam)
C-12	Ion Chromatograph
C-13	Stereoscopic Microscope
C-14	Microscope
C-15	Handy Type pH Meter
C-16	Laboratory pH Meter
C-18	Mercury Analyzer
C-19	Glass Wares Set
C-20	Reagents (w/Standard Samples)
G-1B	Semi-Micro Analysis Balance-2
G-2	Macro Analysis Balance
G-4	Tabletop Type Centrifuge
G-6	Muffle Furnace (for Organic)
G-8	Constant Temperature Oven
G-9	Middle Temperature Oven
G-11	Oven for Glass Wares (Dryer)
G-12	Autoclave (Vertical Type)
G-13	Incubator
G-14	Low Temperature Incubator
G-20	Shaker (Middle)
G-23	Mixer
G-25	Hot Plate (Small)
G-26	Magnetic Stirrer (w/Hop Plate)
G-27	Multi Magnetic Stirrer w/Magnetic Sets
G-28	Constant Temperature Water Bath
G-32	Water Bath
G-34	Ultrasonic Cleaner
G-37	Ultrasonic Pipette Cleaner
G-38	Ion Exchanger
G-39	Water Distillation Unit
G-40	Clean Bench
G-41	Draft Chamber w/Gas Cleaning Device
G-42	Draft Chamber
G-43	AC Stabilizer
G-46	Refrigerator
G-47	Freezer
G-48	Ice Maker (Cube Ice)
G-49	Copy Machine
G-50	Monitoring Car
G-51	Tool Set
G-53	Locker for Reagents
G-55	Balance (6kg)
G-57	Colony Counter
G-58	Personal Computer (Arabic/English)
G-59	Video Camera w/Video Monitor Unit
G-60	Camera
G-61A	Over Head Project (w/Screen)
G-61B	Data Show Projector Equipment
W-1	Total Organic Carbon Analyzer
W-2	Handy Type DO Meter
W-3	Laboratory Type DO Meter
W-6&7	Tint Meter/Turbidity Meter
W-8	Handy Type Conductivity/Temp. Meter
W-9	Conductivity Meter
W-10	Salt Meter (Na Ion Meter)
W-11A	Water Sampler(Hyrot Type)
W-11C	Water Sampler( Type)
W-13	Ekman Barge Grab Sampler
W-14	Plankton Net
W-15	Distillation Apparatus(for CN,NH4,F)
W-18	BOD Analyzing Apparatus(Incubator)
W-19	COD Analyzing Apparatus w/Closed Reflux (Cr)
W-22	Wastewater Treatment Equipment
W-23B	Portable Waste Water Chest (90L)
W-24	Portable Waste Water Chest (50L)
W-26	Water Quality Analysis (Temp,pH,Conductivity,Turbidity and DO)
W-29	Water Proof Camera
W-31	Ion Analyzer w/Electrode Set
W-32	Ion Analyzer w/Electrode Set
W-33	Vacuum Filter w/Manifold
A-3	Portable Black Fume Monitor
A-9	Stack Gas Sampler (for Dust)
A-11	Gas Meter
A-12	Rotor Meter
A-13	Mass Flow Meter
A-15	Auto-Dry Desicator
A-17	Portable Auto HC/CO Analyzer for Stack Gas
A-18	Portable Auto. SO2 Analyzer for Stack Gas
A-19	Portable Auto. NOx Analyzer for Stack Gas
A-20	High-volume Air Sampler
A-21	Low-volume Air Sampler
A-28	Ambient Air Analyzer
A-29	Total Dust Meter (Light-scattering)
M-2	Boat for Monitoring/Sampling*
M-7	Under Water Video Digital Camera
M-8	Under Water Light Meter
M-9	Geographical Position System with Handled Unit &USP/PDA Adapter &Diferent GPS Receiver And Recorder
M-10	Binoculars
M-13	Handled VHF Radio
M-14	Zoo Plankton Counting Tray

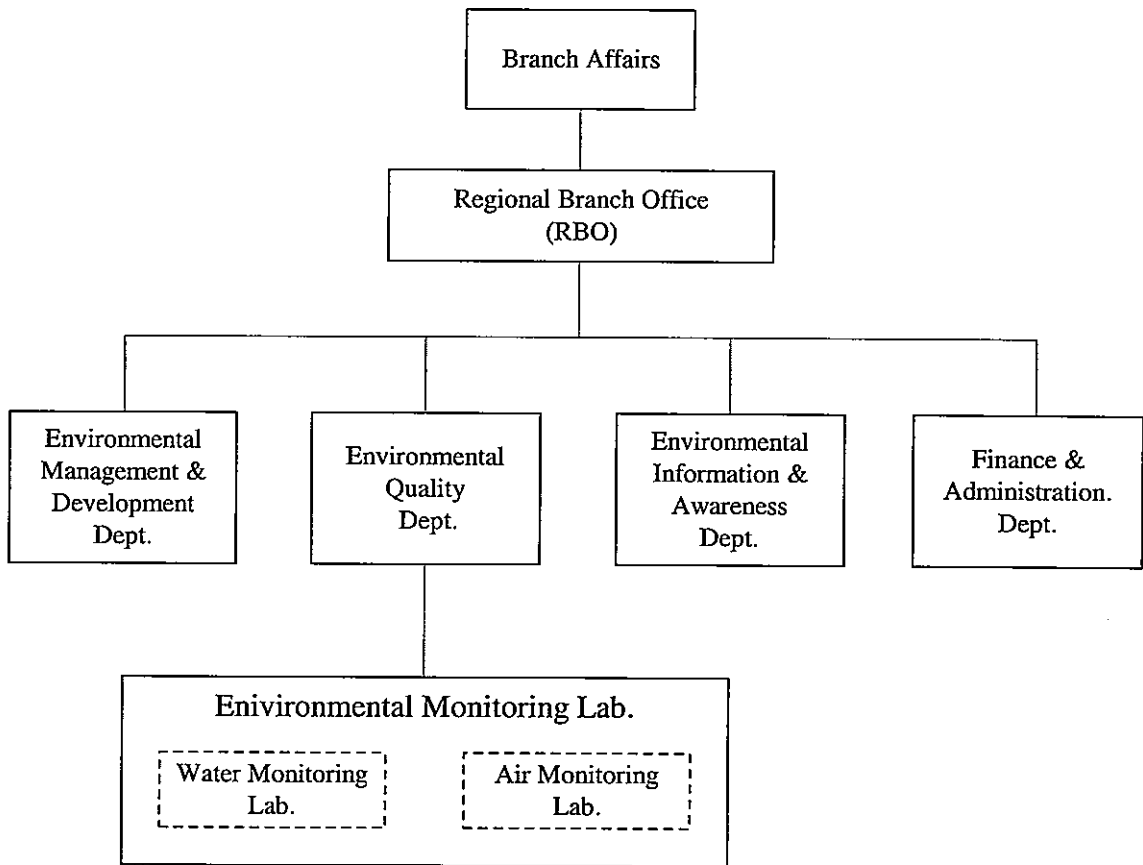
\* These items are nothing on a drawing.

Fig 2.2(3/3) Layout Plan of Equipment (Hurghada)

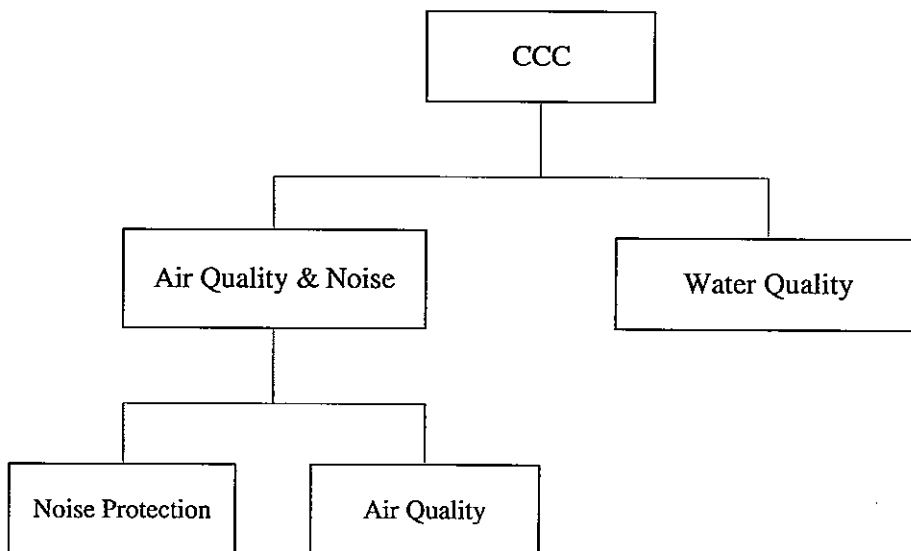
COLLABORATING ARCHITECTURAL-ENGINEERING FIRM	PROJECT TITLE THE PROJECT FOR SUPPLY OF EQUIPMENT FOR REGIONAL ENVIRONMENTAL MONITORING NETWORK(PhaseII) IN THE ARAB REPUBLIC OF EGYPT	OWNER JAPAN INTERNATIONAL COOPERATION AGENCY	CONSULTANT CTI ENGINEERING INTERNATIONAL CO.,LTD. GREEN BLUE CORPORATION	DATE CHECKED DRAWN	DRAWING TITLE LAYOUT PLAN OF EQUIPMENT HRG SITE ( GROUND FLOOR )	SCALE 1:200	SHEET NO. PROJECT NO.
--	---	---	--	--------------------------	--	----------------	--------------------------



**Fig 2.3 Organization Chart of EEAA**



**Fig 2.4 Organization Chart of RBO**



**Fig 2.5 Organization Chart of CCC**