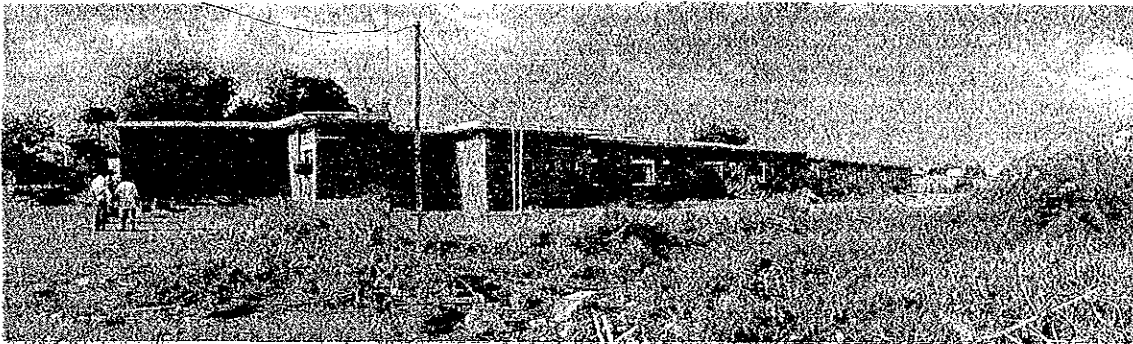


13. Condition of the Relevant Facilities

Project Site



↑ (Photo-1) Site View from South East



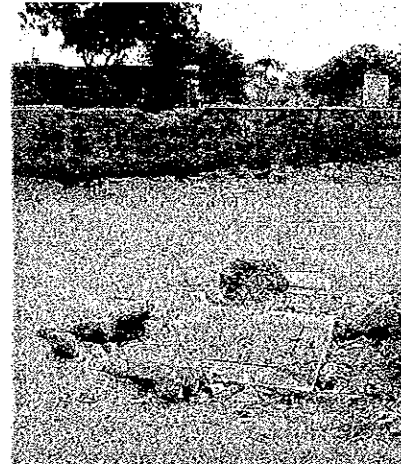
↑ (Photo-2) South Side of PHC Building



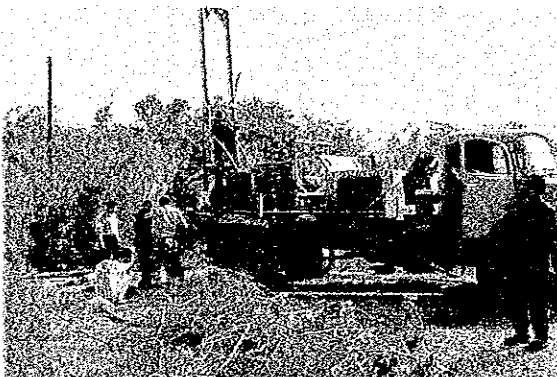
↑ (Photo-3) Main Gate to PHC



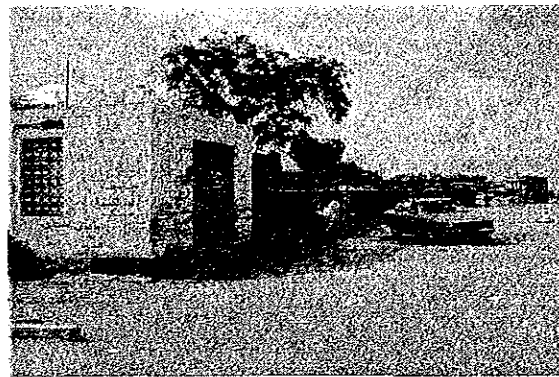
↑ (Photo-4) Main Gate to Mansourah PC



↑ (Photo-5) Drainage Pit

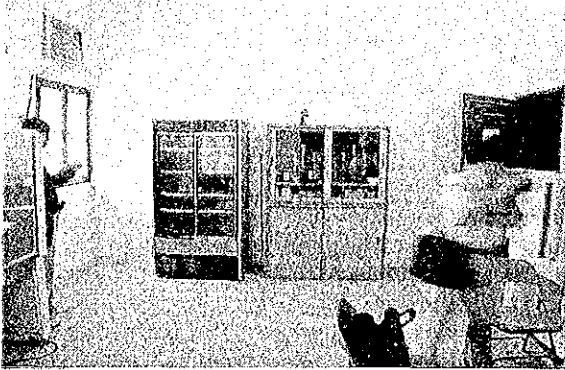


↑ (Photo-6) Geological Survey

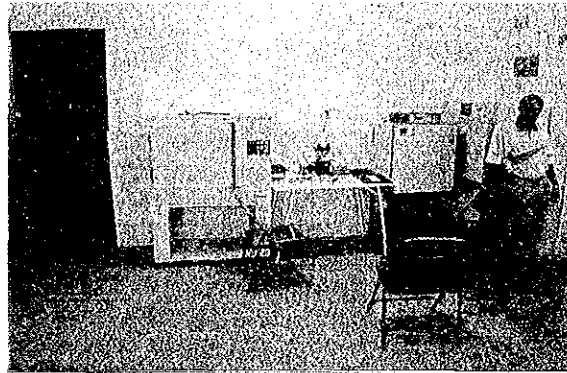


↑ (Photo-7) Electrical Sub-Station

Aden PHC

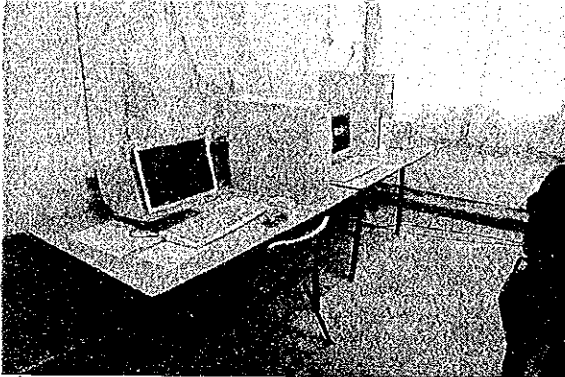


↑ (Photo-8) Reference Lab.

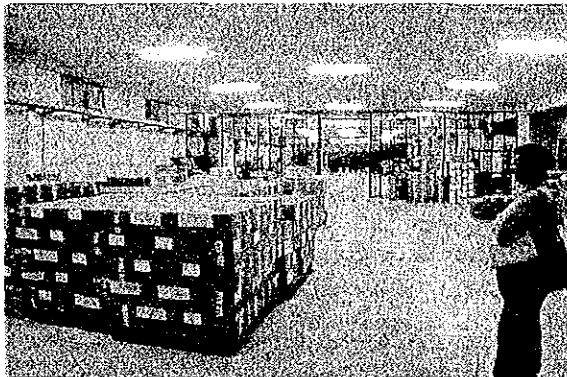


↑ (Photo-9) Reference Lab.

Aden Central Medical Storage

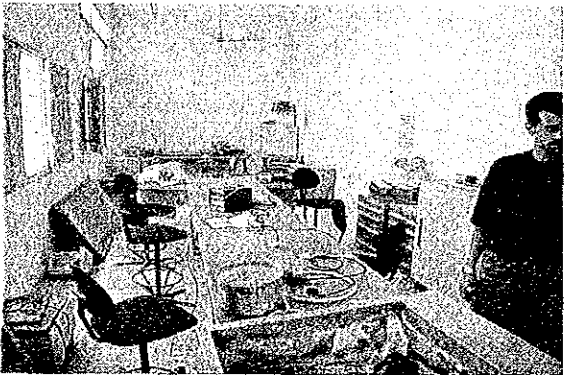


↑ (Photo-10) Storage Keeper Room



↑ (Photo-11) Medical Storage

Maintenance Office



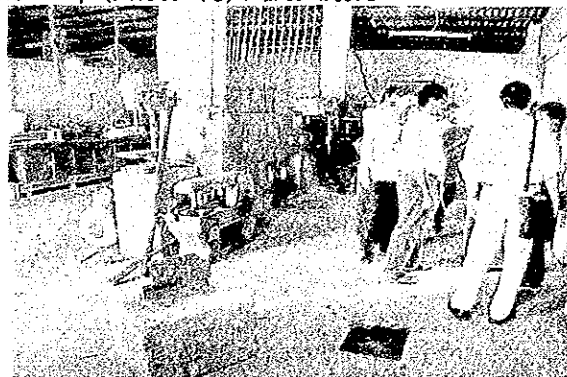
↑ (Photo-12) Maintenance of Medical Equipment



↑ (Photo-13) Parts Store

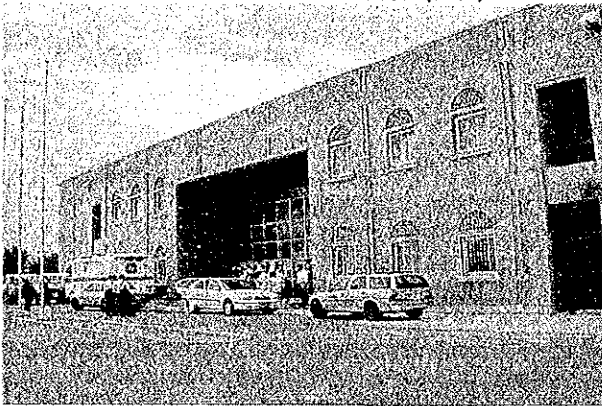


↑ (Photo-14) Workshop for Wooden Goods

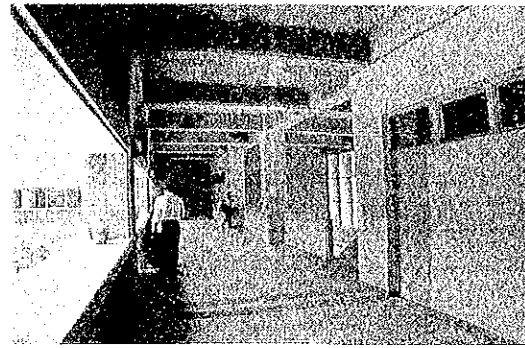


↑ (Photo-15) Workshop for Metal Goods

National Tuberculosis Institute (NTI)



↑ (Photo-16) Exterior



↑ (Photo-17) Corridor



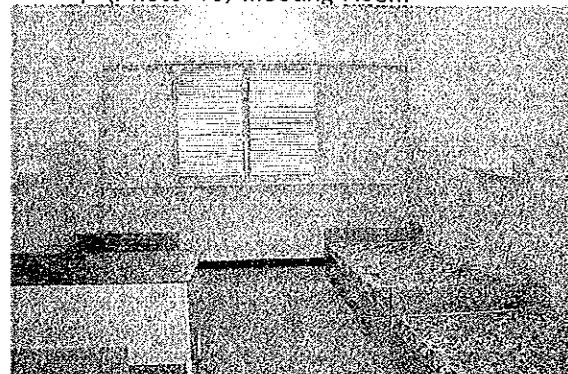
↑ (Photo-18) Reference Lab.



↑ (Photo-19) Meeting Room



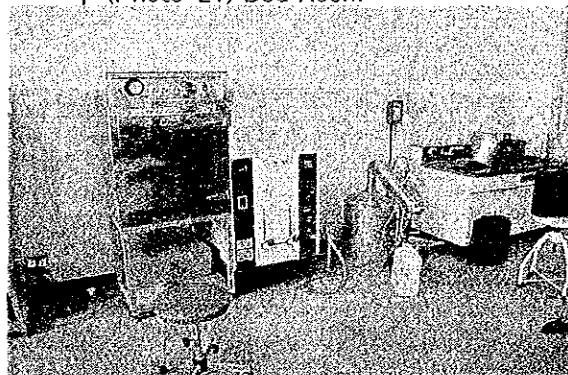
↑ (Photo-20) Lecture Room



↑ (Photo-21) Bed Room

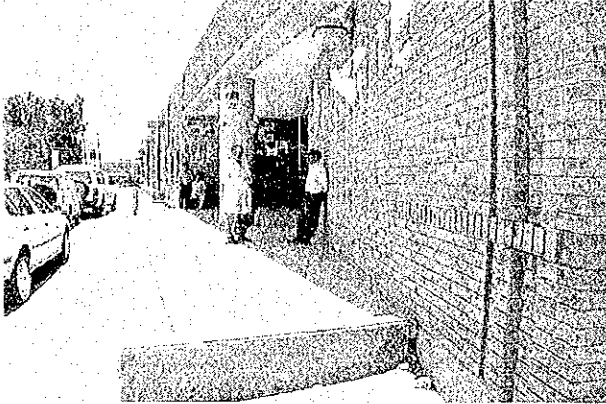


↑ (Photo-22) Laboratory

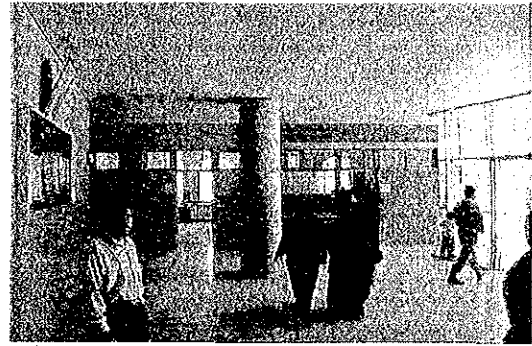


↑ (Photo-23) Preparation Room

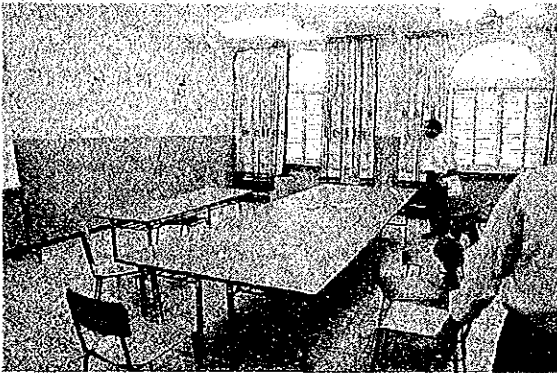
Taiz Sub Center



↑ (Photo-24) Main Entrance



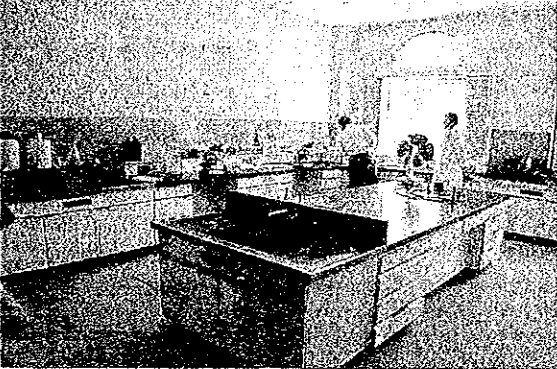
↑ (Photo-25) Entrance Hall



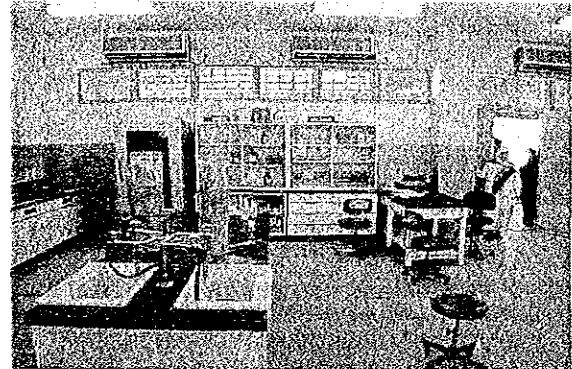
↑ (Photo-26) Lecture Room



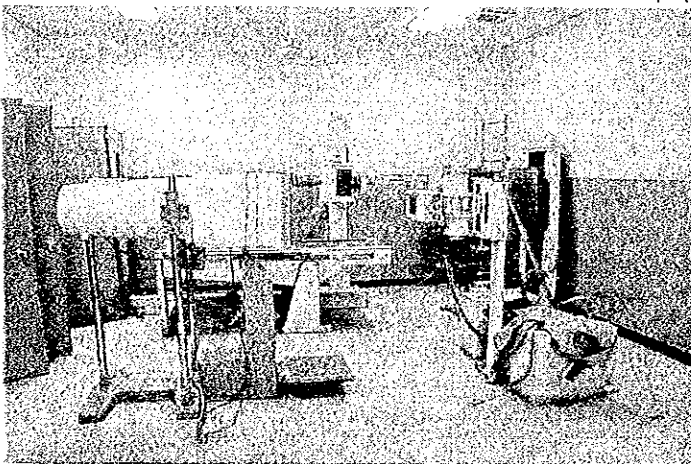
↑ (Photo-27) DOTS Room



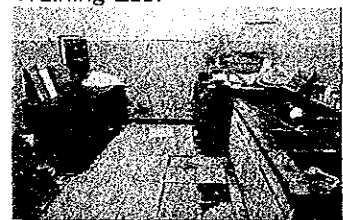
↑ (Photo-28) Reference Lab.



↑ (Photo-29) Training Lab.



↑ (Photo-30) X-Ray Room

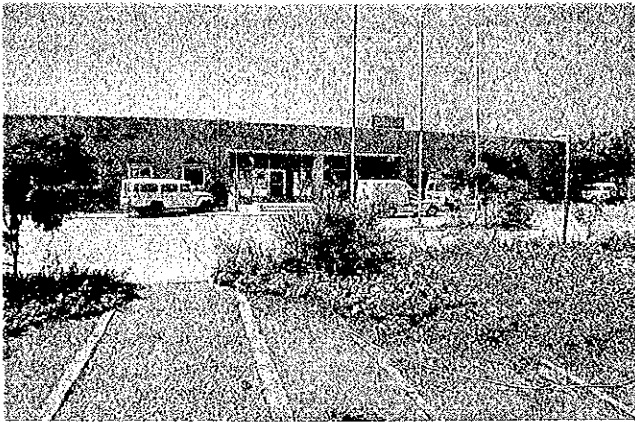


↑ (Photo-31) Dark Room

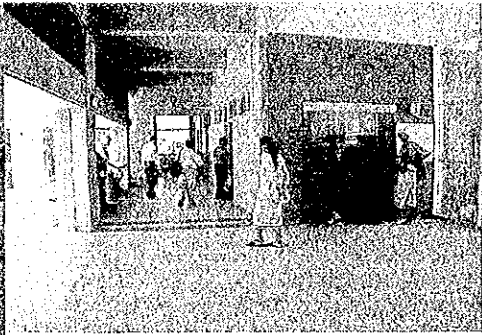


↑ (Photo-32) Corridor

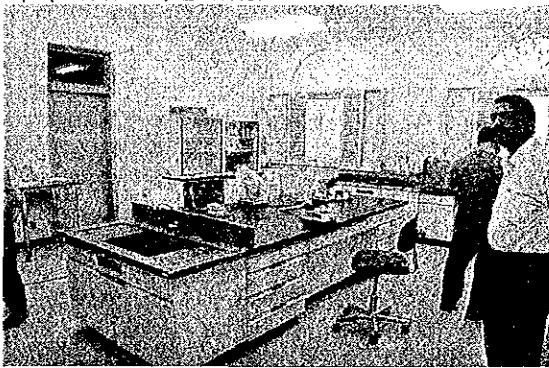
Hodeidah Sub Center



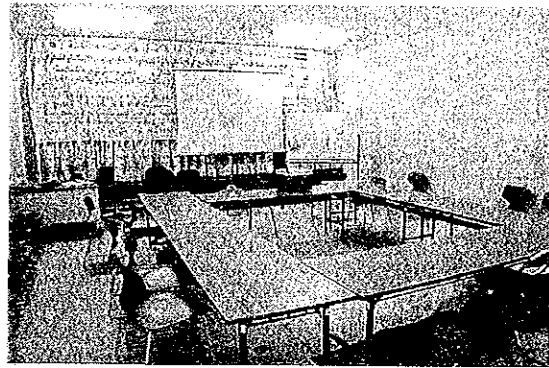
↑ (Photo-33) Exterior



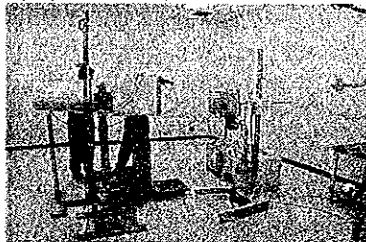
↑ (Photo-34) Entrance Hall



↑ (Photo-35) Reference Lab.



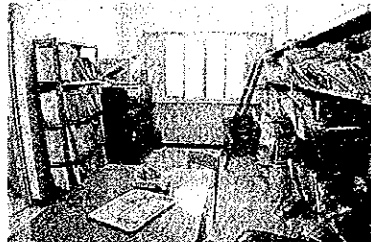
↑ (Photo-36) Lecture Room



↑ (Photo-37) X-Ray Room



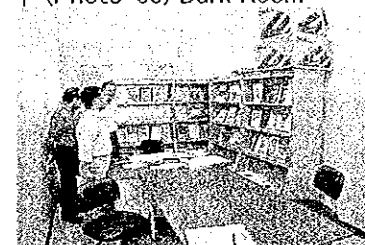
↑ (Photo-38) Dark Room



↑ (Photo-39) Karte • Film Store



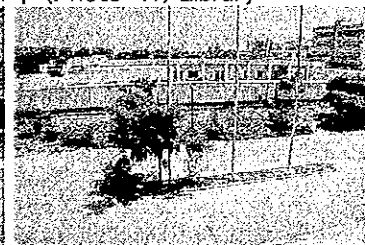
↑ (Photo-40) Consultation Room



↑ (Photo-41) Library



↑ (Photo-42) Court Yard

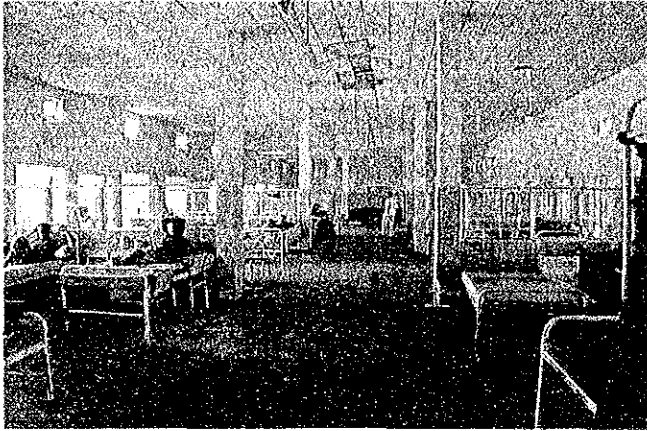


↑ (Photo-43) Tuberculosis Ward

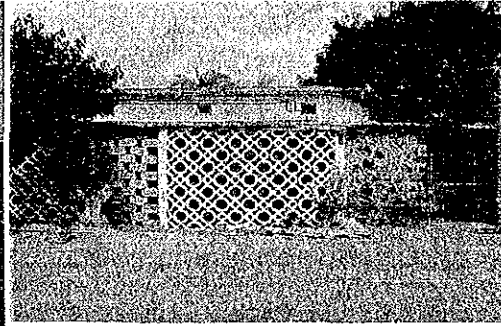


↑ (Photo-44) Tuberculosis Room

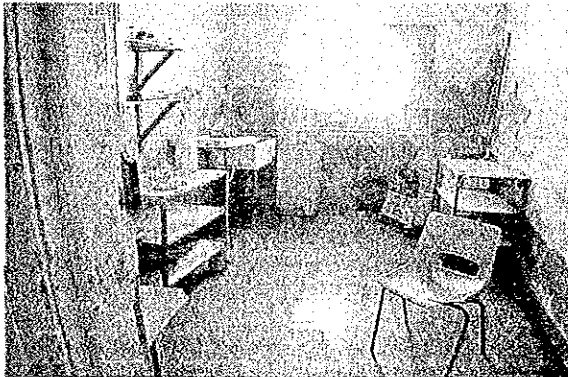
Aden Jumphuriyah Hospital



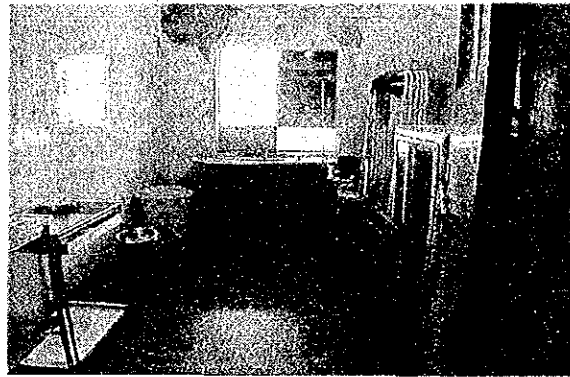
↑ (Photo-45) Male Ward



↑ (Photo-46) Exterior



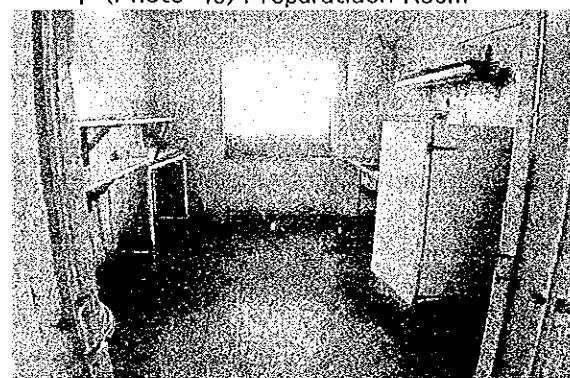
↑ (Photo-47) Pantry



↑ (Photo-48) Preparatiuon Room



↑ (Photo-49) Consultation Room



↑ (Photo-50) Female Ward Pantry

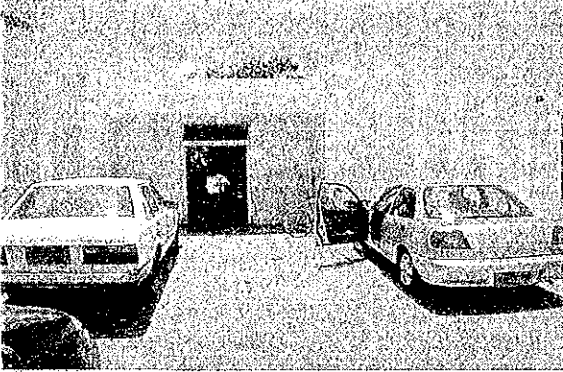


↑ (Photo-51) Female Ward

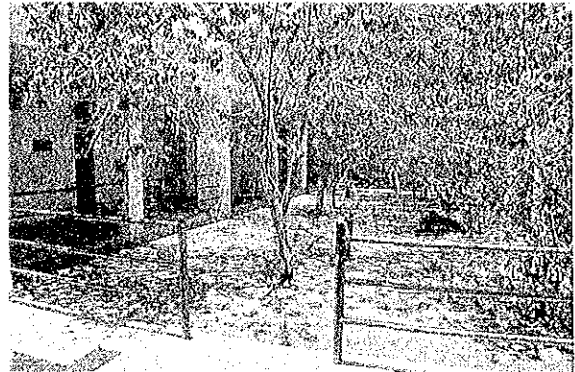


↑ (Photo-52) Nurse Station

Mansourah Polyclinic



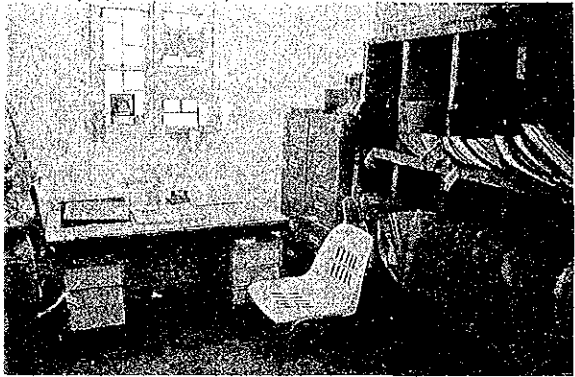
↑ (Photo-53) Main Entrance



↑ (Photo-54) Court Yard

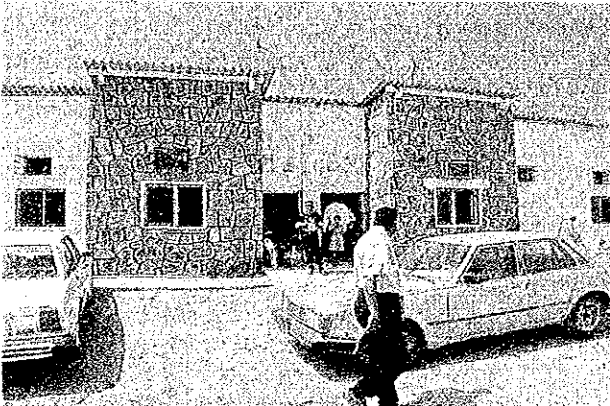


↑ (Photo-55) Examination Room

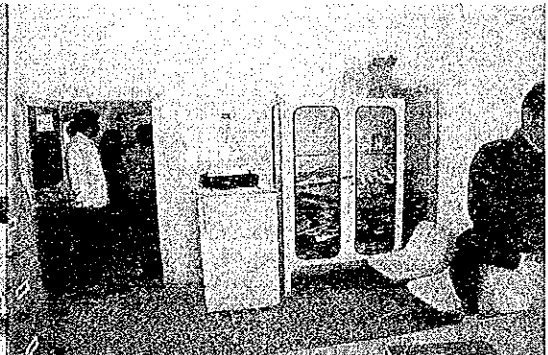


↑ (Photo-56) DOTS Room

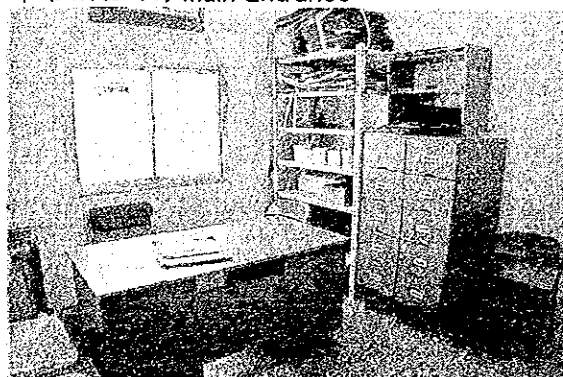
Boreiqa Polyclinic



↑ (Photo-57) Main Entrance



↑ (Photo-58) DOTS Room

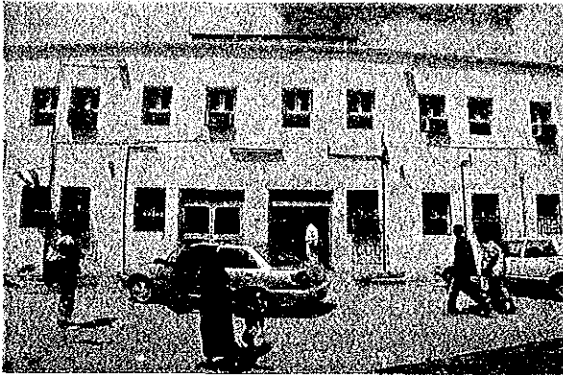


↑ (Photo-59) DOTS Room



↑ (Photo-60) Medical Storage

Medan Polyclinic



↑ (Photo-61) Exterior



↑ (Photo-62) DOTS Room

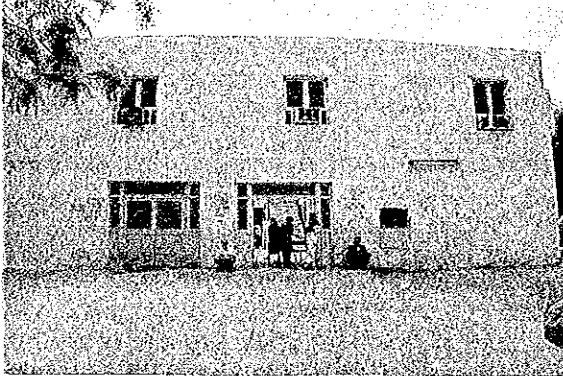


↑ (Photo-63) Examination Room



↑ (Photo-64) Reference Lab.

Al Mu'ila Polyclinic



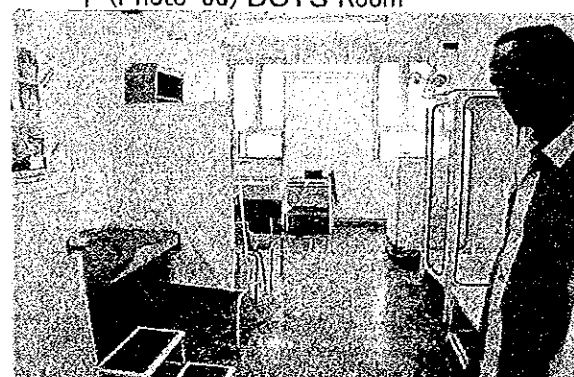
↑ (Photo-65) Exterior



↑ (Photo-66) DOTS Room



↑ (Photo-67) Sputum Examination Room



↑ (Photo-68) Consultation Room