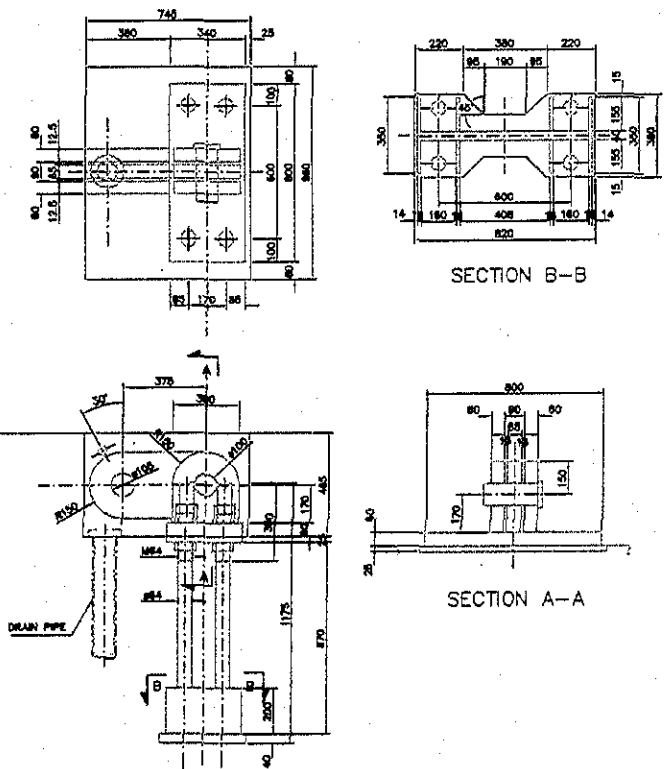


QUANTITY CALCULATION COVER SHEET								
Project	Detailed Design on Port Reactivation Project in La Union Province			Project Code	JC1N004/2N001			
Work Section Title	Crane anchoring frame			Pay Item No. (BOQ)	2B-2005			
Quantity Item	Concrete for cover			Unit	m ³			
Calculation Procedure Applied								
<p>Volume of concrete for cover was computed for crane anchoring frame.</p>								
References, Calculation Base and Revisions								
<p>References: Tender Drawings: DW-QW-01-059 Detail of Anchor - Jack up Plate & Socket Block.</p>								
Rev	Prepared		No. of Pages	Checked		Reviewed		Superseded by Calc No.
	by	Date		by	Date	by	Date	
0	Karla Garcia			Mr. Inuma		Mr. Ando		
1								
2								
3								

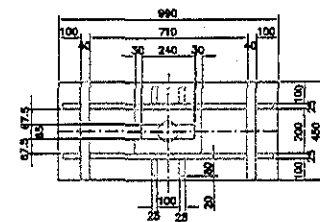
DETAIL OF ANCHORING FRAME
SCALE 1:20



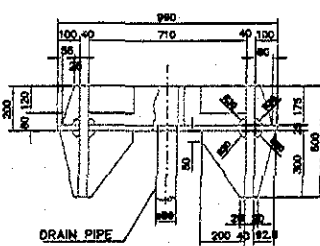
SECTION B-B

SECTION A-A

DETAIL OF SOCKET BLOCK
SCALE 1:20

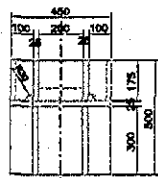


PLAN



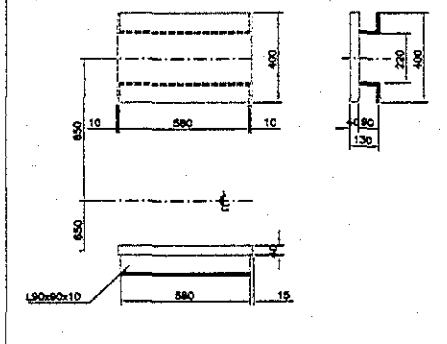
FRONT VIEW

DRAIN PIPE

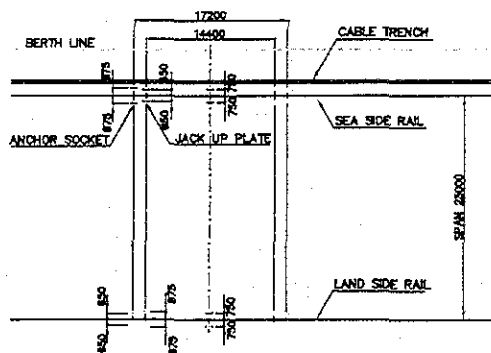


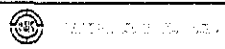
LATERAL VIEW

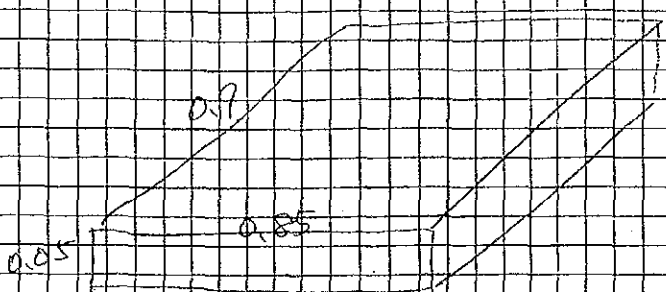
DETAIL OF JACK UP PLATE
SCALE 1:20



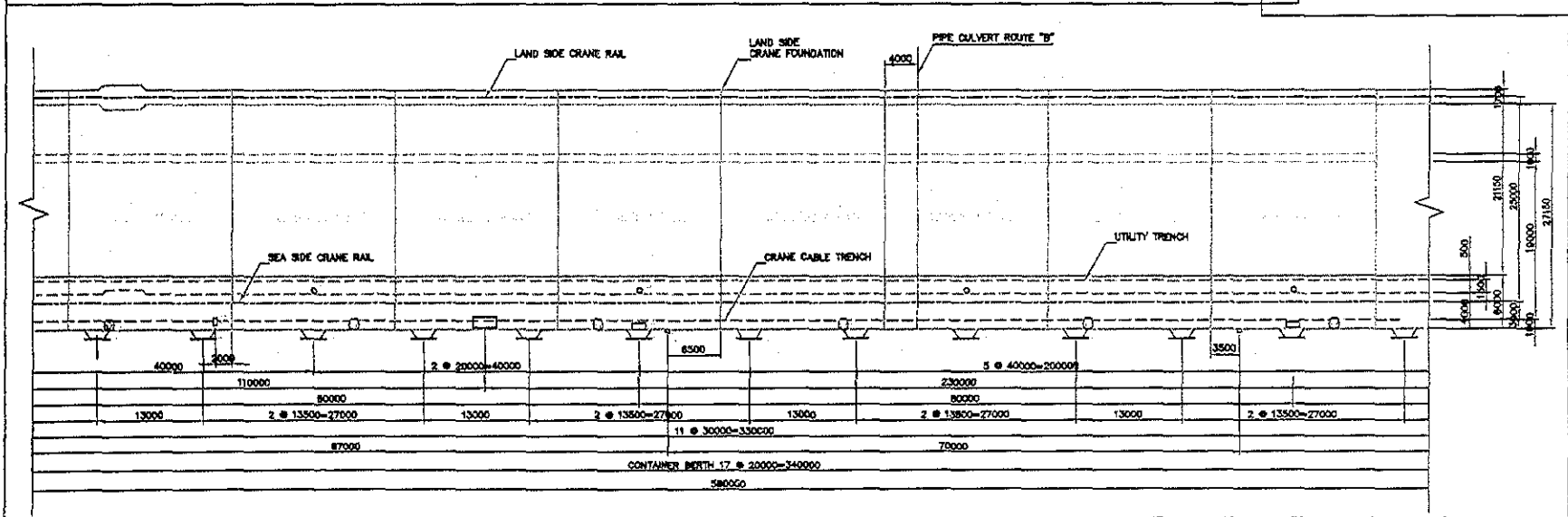
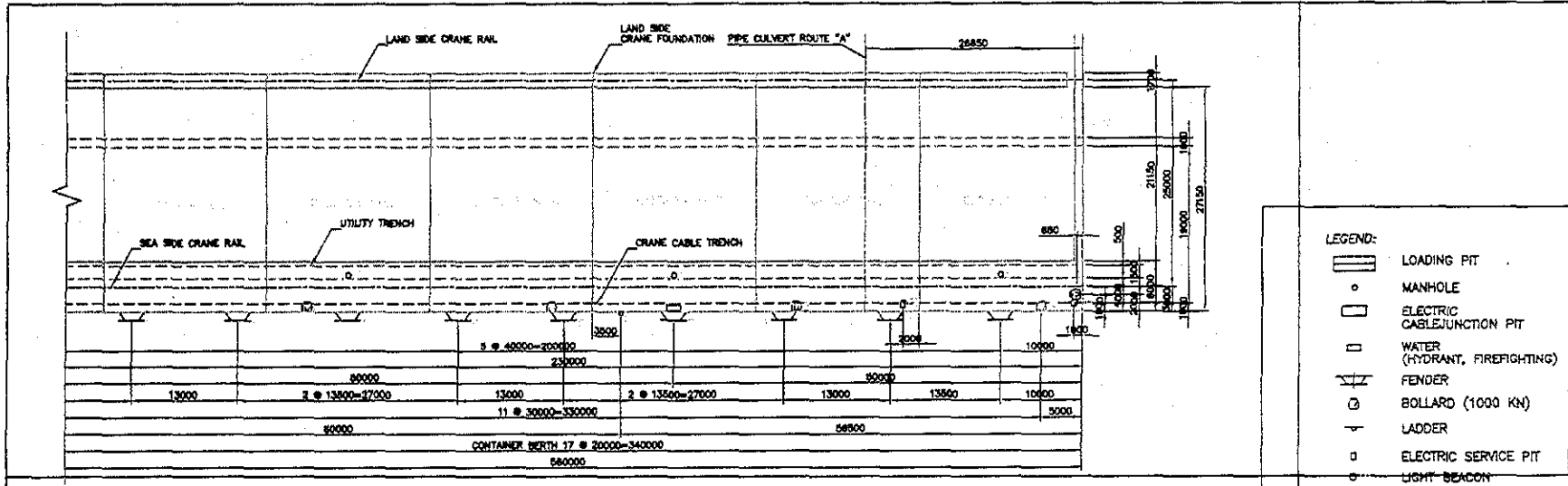
PLAN OF ANCHOR AND JACK UP PLATE
SCALE 1:500



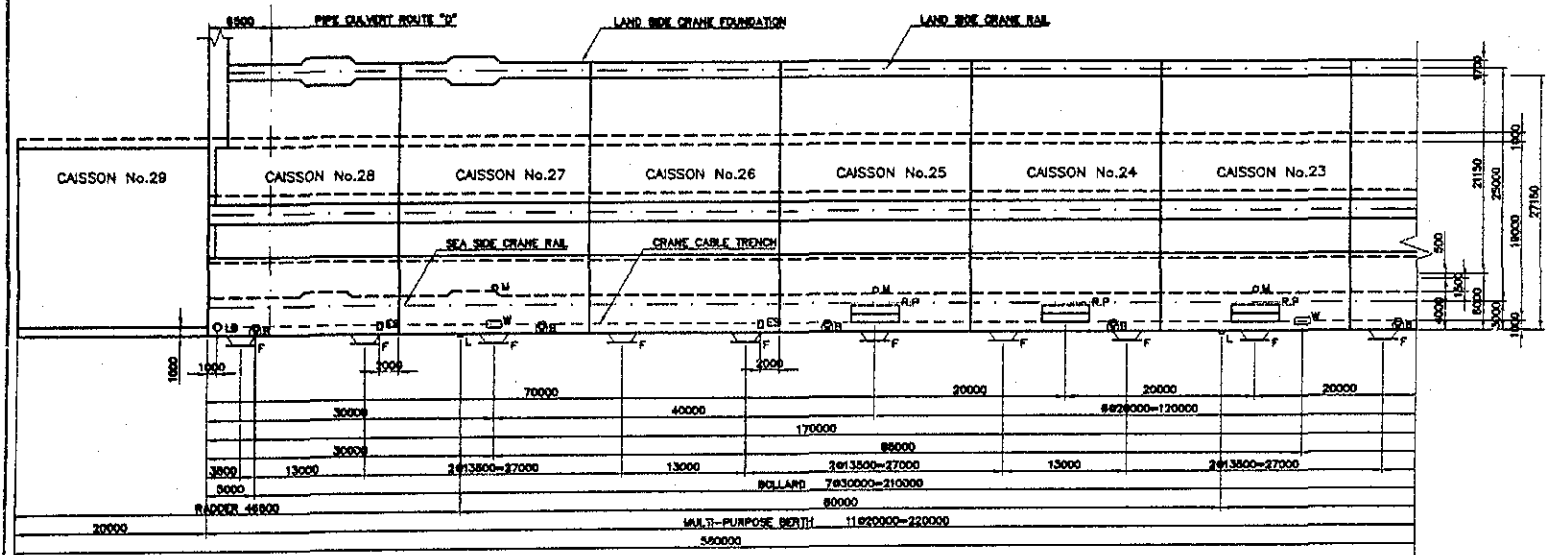
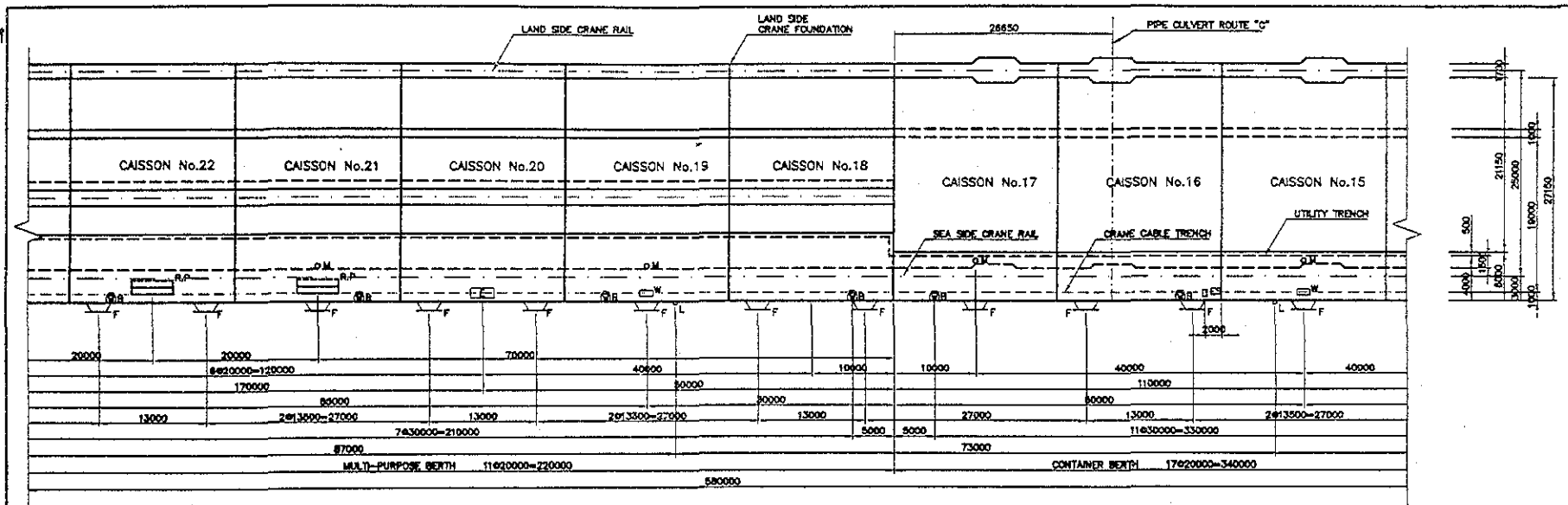


Project	Detailed Design on Port Reactivation Project in La Union	Calc. File No.	
Section	Crane anchoring frame	Calc. Index No.	
Subject	Concrete for cover	Page No.	Rev.
			References/ Notes
$N = 16$			
$V_1 = 0.85 \times 0.9 \times 0.05$			
$= 0.383 \quad 0.0383$			
$\approx 0.4 \text{ m}^3 \quad \approx 0.04$			
$V = 0.4 \times 16 = \boxed{0.64} \text{ m}^3$			
Prepared by		Checked by	
/ /200		/ /200	

QUANTITY CALCULATION COVER SHEET								
Project		Detailed Design on Port Reactivation Project in La Union Province			Project Code		JC1N004/2N001	
Work Section Title		Fender			Pay Item No. (BOQ)		2B-2J	
Quantity Item		Type - A			Unit		Sets	
Calculation Procedure Applied								
<p>Fender was to be set in front of apron for Container berth. See attached drawings.</p>								
References, Calculation Base and Revisions								
<p>References: Tender Drawings:</p> <p>DW - 2N - 01 - 240 Detail Layout Plan Container and Multipurpose Berth (1)</p> <p>DW - 2N - 01 - 241 Detail Layout Plan Container and Multipurpose Berth (2)</p>								
Rev	Prepared		No. of Pages	Checked		Reviewed		Superseded by Calc No.
	by	Date		by	Date	by	Date	
0	Karla Garcia			Mr. Inuma		Mr. Ando		
1								
2								
3								



<p>Prepared by: [Name]</p>		<p>Checked by: [Name]</p>	
<p>Date: [Date]</p>		<p>Scale: [Scale]</p>	

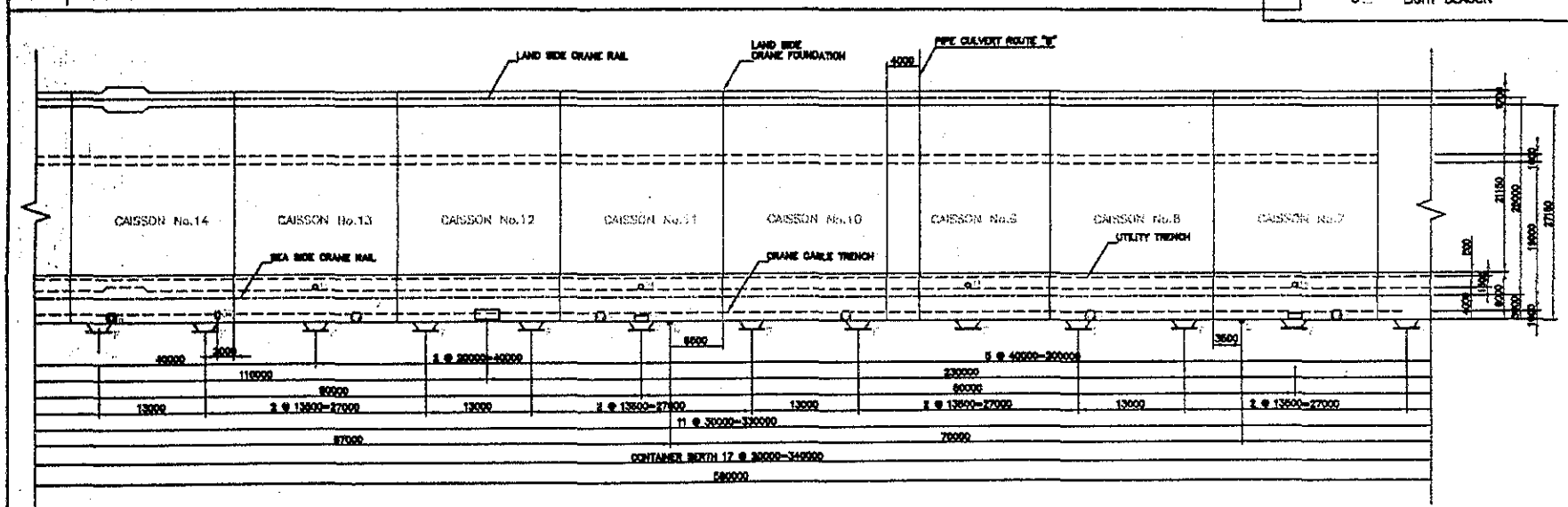
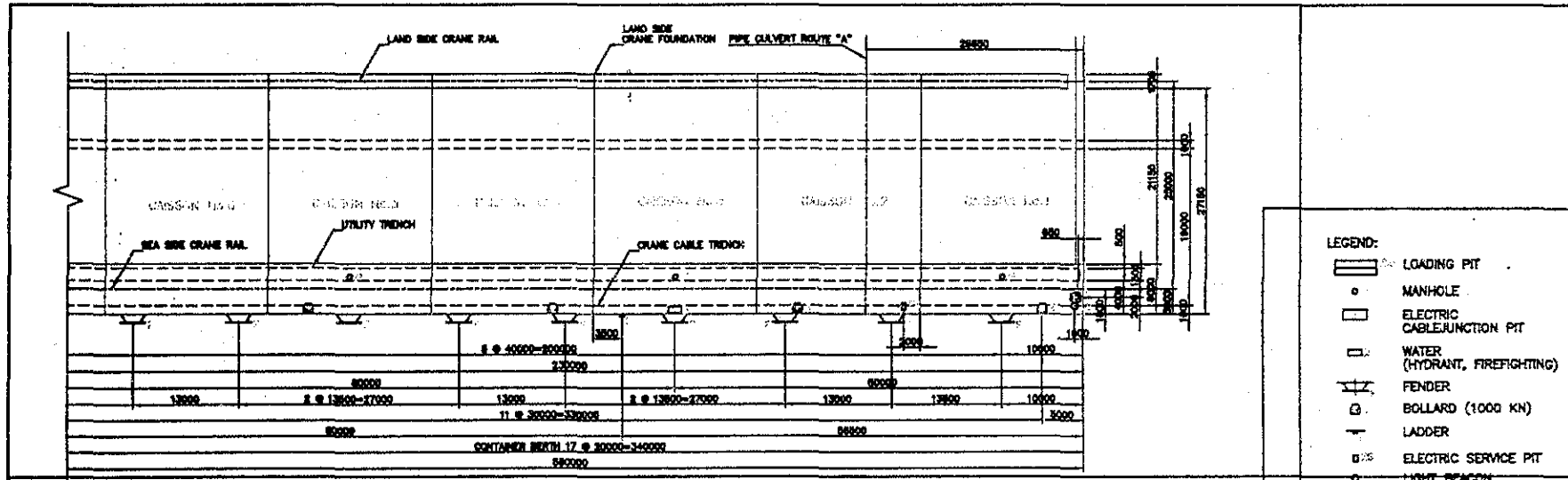


- LEGEND:
- R.P. LOADING PIT
 - MANHOLE
 - ELECTRIC CABLEJUNCTION PIT
 - WATER (HYDRANT, FIREFIGHTING)
 - FENDER
 - BOLLARD (1000 KN)
 - LADDER
 - ELECTRIC SERVICE PIT
 - LIGHT BEACON

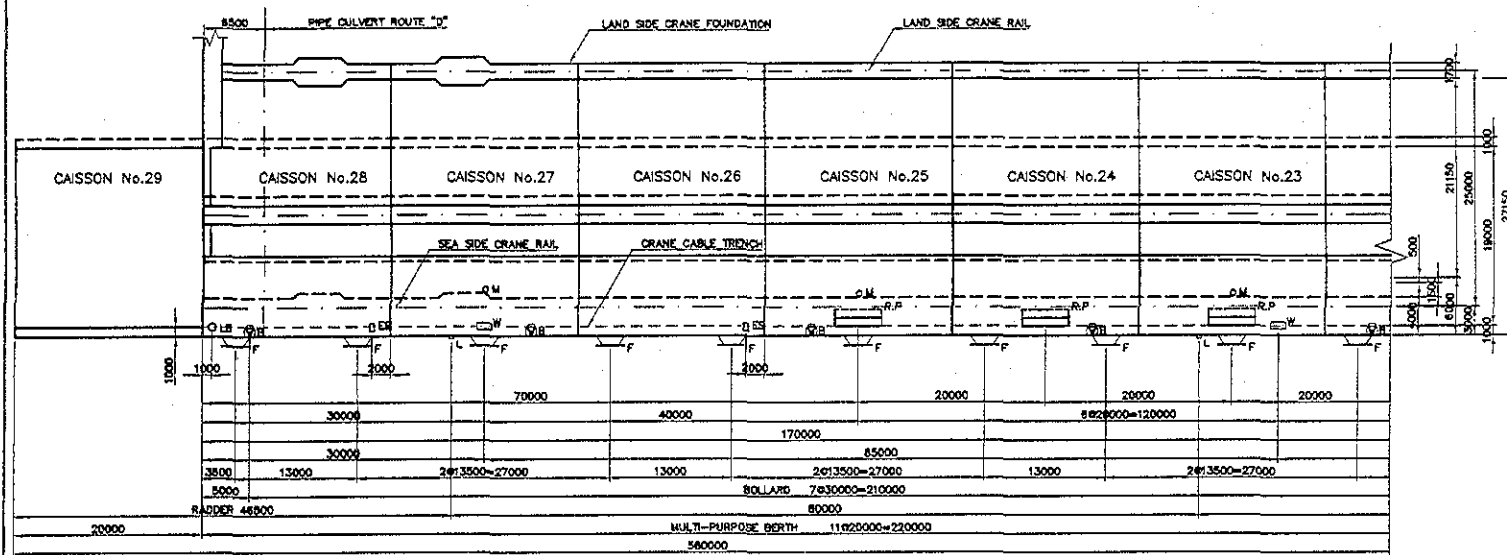
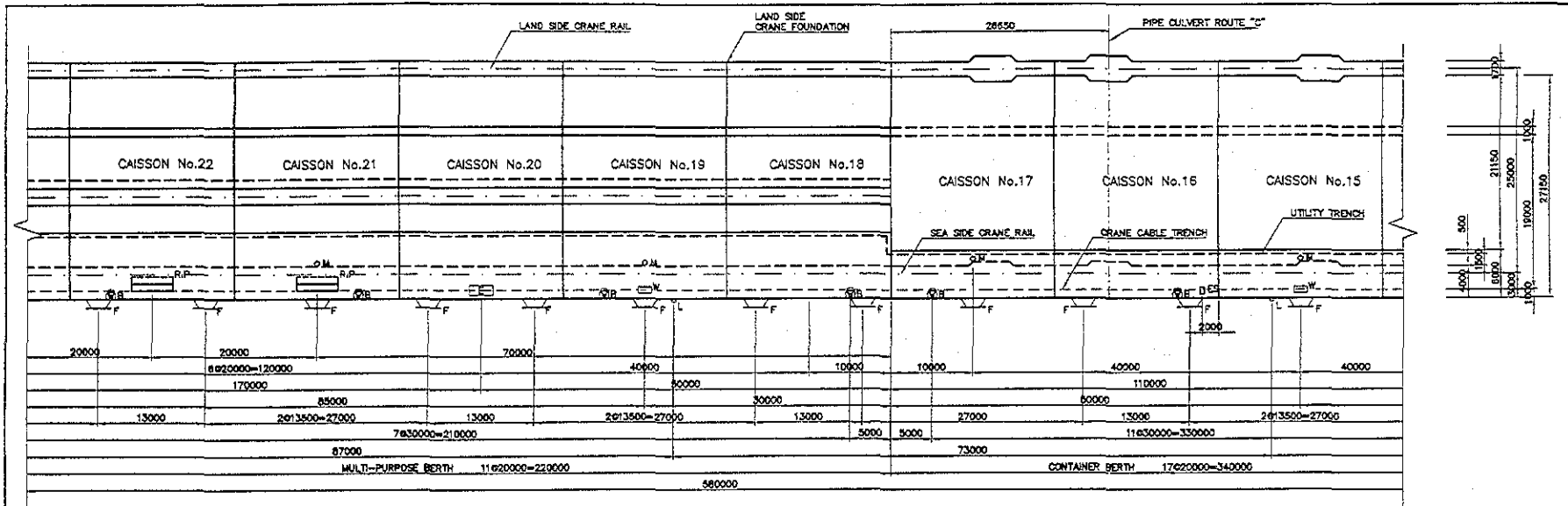
JICA COMISION EJECUTIVA PORTUARIA AUTONOMA (CEPA)	JAPAN INTERNATIONAL COOPERATION AGENCY (JICA)	DETAILED DESIGN ON PORT REACTIVATION PROJECT IN LA UNION PROVINCE OF THE REPUBLIC OF EL SALVADOR	DESIGNED BY : CHECKED BY : APPROVED BY :	SECTION : QUAYWALL WORK SUB-SECTION : CONTAINER AND MULTI-PURPOSE BERTH TITLE : DETAIL LAYOUT PLAN CONTAINER AND MULTI-PURPOSE BERTH (2)	DATE : JULY/2002 SCALE : 1 : 500 DRAWING NO. : DW-QW-01-041
	NIPPON KOKI CO., LTD.				

Project	Detailed Design on Port Reactivation Project in La Union	Calc. File No.	
Section	Fender	Calc. Index No.	
Subject	Type - A	Page No.	Rev.
$N = \sum S$			References/Notes
Prepared by		Checked by	
/ /200		/ /200	

QUANTITY CALCULATION COVER SHEET								
Project	Detailed Design on Port Reactivation Project in La Union Province			Project Code	JC1N004/2N001			
Work Section Title	Bollard			Pay Item No. (BOQ)	2B-22			
Quantity Item	Bollard			Unit	Sets			
Calculation Procedure Applied								
<p>Bollard was to be set on the coping.</p> <p>See attached drawing.</p>								
References, Calculation Base and Revisions								
<p>References: Tender Drawings:</p> <p>DW-QW-01-040 Detail layout Plan Container and Multipurpose Berth (1)</p> <p>DW-QW-01-041 Detail layout Plan Container and Multipurpose Berth (2)</p>								
Rev	Prepared		No. of Pages	Checked		Reviewed		Superseded by Calc No.
	by	Date		by	Date	by	Date	
0	Karla Garcia			Hr. Tronca		Hr. Ando		
1								
2								
3								



		JPA Gpa GENERAL CONTRACTOR PORTLAND, OREGON		PORTLAND, OREGON 503.253.1234	PROJECT NO.	SHEET NO.
					CONTRACT NO.	DATE
PORTLAND, OREGON			PORTLAND, OREGON			

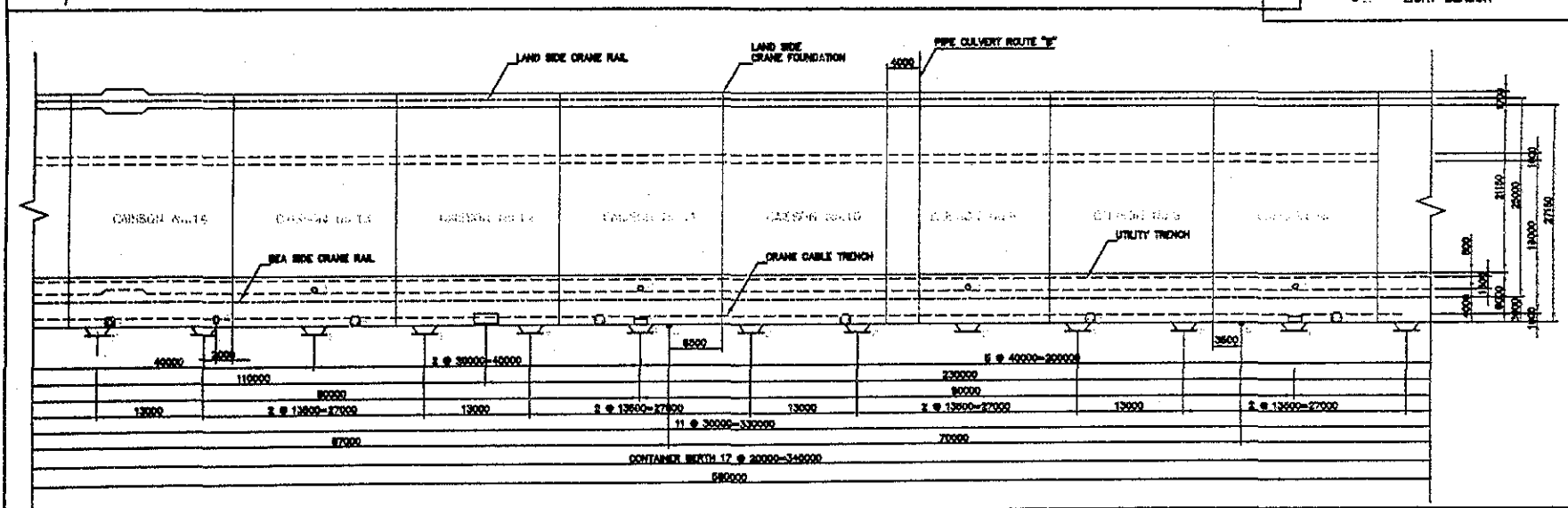
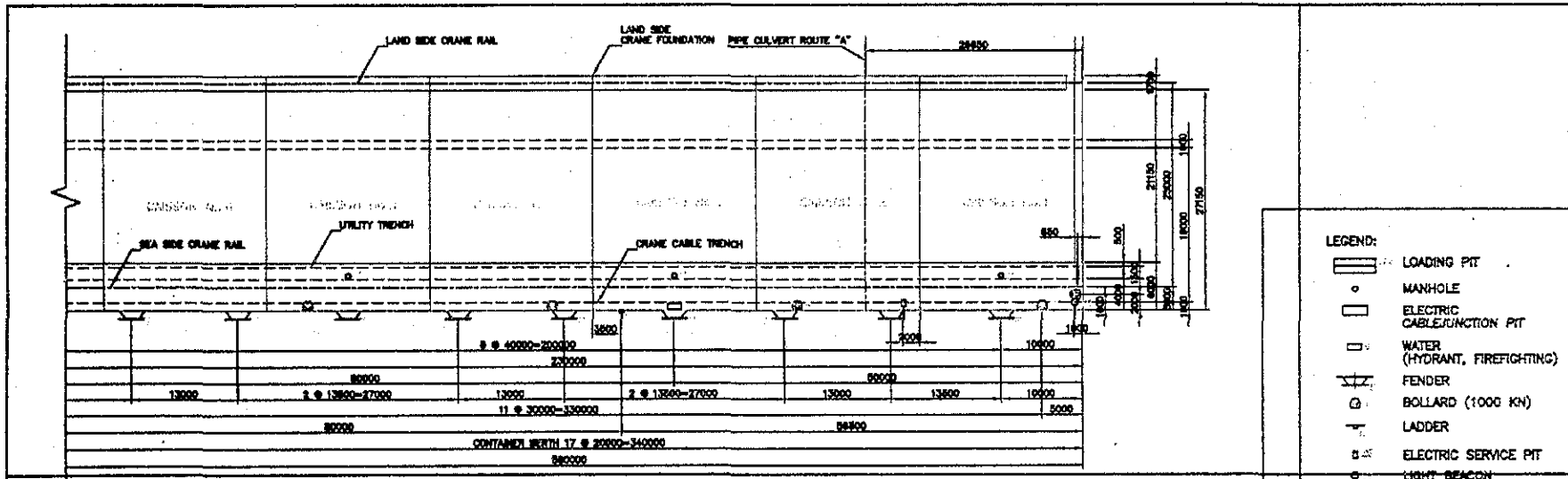


- LEGEND:
- R.P. LOADING PIT
 - M.H. MANHOLE
 - E.C.J.P. ELECTRIC CABLE JUNCTION PIT
 - W. WATER (HYDRANT, FIREFIGHTING)
 - F. FENDER
 - B. BOLLARD (1000 KN)
 - L. LADDER
 - E.S.P. ELECTRIC SERVICE PIT
 - L.B. LIGHT BEACON

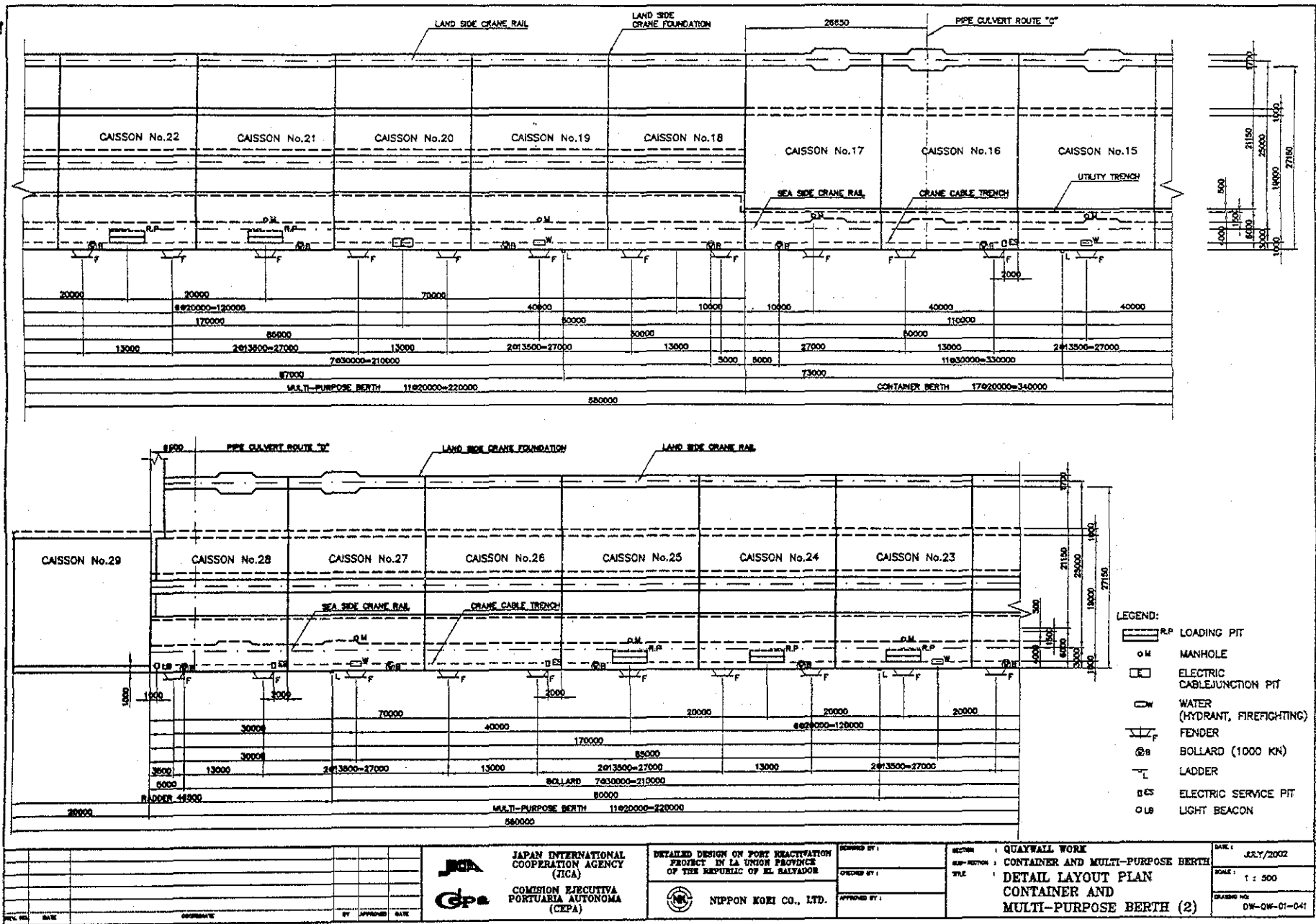
REV. NO.	DATE	COOPERATION	BY	APPROVED	DATE	JICA JAPAN INTERNATIONAL COOPERATION AGENCY (JICA)	DETAILED DESIGN ON PORT REACTIVATION PROJECT IN LA UNION PROVINCE OF THE REPUBLIC OF EL SALVADOR NIPPON KOEI CO., LTD.	DESIGNED BY :	SECTION :	DATE :
								CHECKED BY :	SUB-SECTION :	JULY/2002
								APPROVED BY :	TITLE :	SCALE :
								QUAYWALL WORK CONTAINER AND MULTI-PURPOSE BERTH DETAIL LAYOUT PLAN CONTAINER AND MULTI-PURPOSE BERTH (2)		DRAWING NO. : DW-QW-01-041

Project	Detailed Design on Port Reactivation Project in La Union	Calc. File No.	
Section	Bollard	Calc. Index No.	
Subject	Bollard	Page No.	Rev.
			References/ Notes
HOOKIN type $N = \boxed{13}$			
		Prepared by	Checked by
		/ /200	/ /200

QUANTITY CALCULATION COVER SHEET								
Project	Detailed Design on Port Reactivation Project in La Union Province			Project Code	JC1N004/2N001			
Work Section Title	Ladder			Pay Item No. (BOQ)	2B-23			
Quantity Item	Ladder			Unit	Sets			
<u>Calculation Procedure Applied</u>								
<p>Ladder was to be set in front of the apron in order to get on or off a ship.</p> <p>See attached drawings.</p>								
<u>References, Calculation Base and Revisions</u>								
<p>References: Tender Drawings:</p> <p>EW - 2N - 01 - 040 Detail Layout Plan Container and Multipurpose Berth (1)</p> <p>DV - 2N - 01 - 041 Detail Layout Plan Container and Multipurpose Berth (2)</p>								
Rev	Prepared		No. of Pages	Checked		Reviewed		Superseded by Calc No.
	by	Date		by	Date	by	Date	
0	Karla Garcia			Mr. Inuma		Mr. Ando		
1								
2								
3								

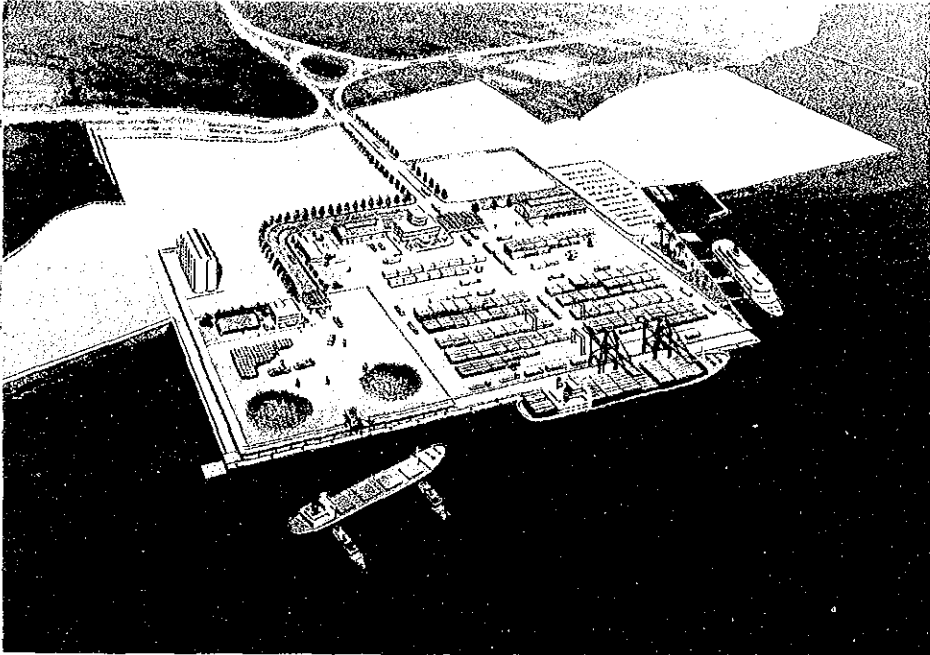


JICA JAPAN INTERNATIONAL COOPERATION AGENCY 1-1-1 Kojimachigai, Chiyoda-ku, Tokyo 100-8302, Japan TEL: 81-3-3582-1111 FAX: 81-3-3582-1115		GPA GENERAL PORT AUTHORITY 118024 118024		(Circular Logo) GENERAL PORT AUTHORITY 118024		(Rectangular Logo) GENERAL PORT AUTHORITY 118024	



JICA JAPAN INTERNATIONAL COOPERATION AGENCY (JICA)		COMISION EJECUTIVA PORTUARIA AUTONOMA (CEPA)		NIPPON KORI CO., LTD.		QUAYWALL WORK CONTAINER AND MULTI-PURPOSE BERTH DETAIL LAYOUT PLAN CONTAINER AND MULTI-PURPOSE BERTH (2)		DATE: JULY/2002 SCALE: 1 : 500 DRAWING NO: DW-QW-01-041
DESIGNED BY: CHECKED BY: APPROVED BY:	DETAILED DESIGN ON PORT REACTIVATION PROJECT IN LA UNION PROVINCE OF THE REPUBLIC OF EL SALVADOR		SECTION: SUB-SECTION: TITLE:		APPROVED BY:		DATE:	
REV. NO. DATE OPERATIVE BY APPROVED DATE								

Project	Detailed Design on Port Reactivation Project in La Union	Calc. File No.	
Section	Ladder	Calc. Index No.	
Subject	Ladder	Page No.	Rev.
			References/ Notes
$N = \boxed{4}$			
		Prepared by	Checked by
		/ /200	/ /200



JICA

