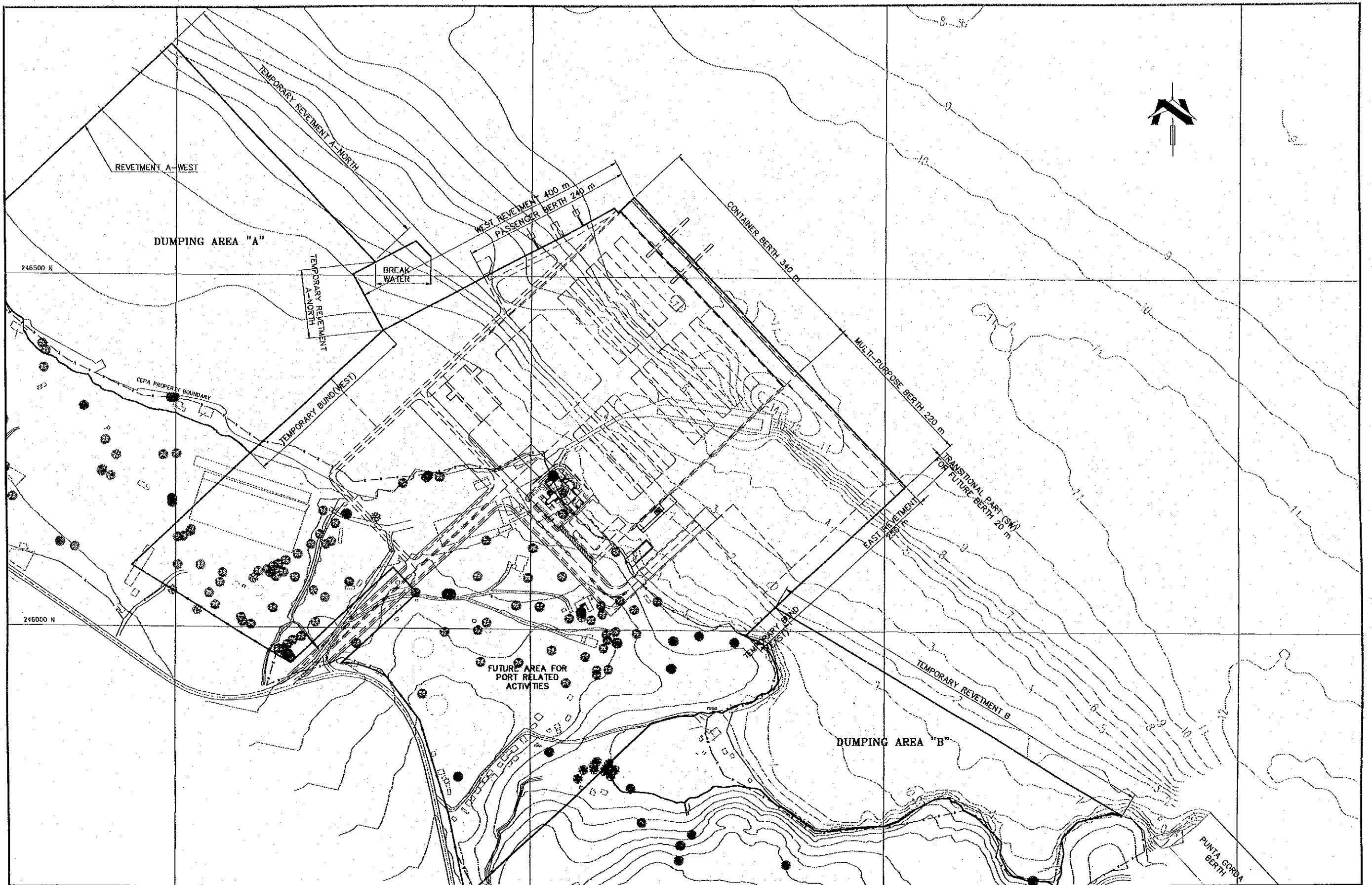



# **QUAYWALL WORKS**



REV. NO.	DATE	COORDINATE	BY	APPROVED	DATE



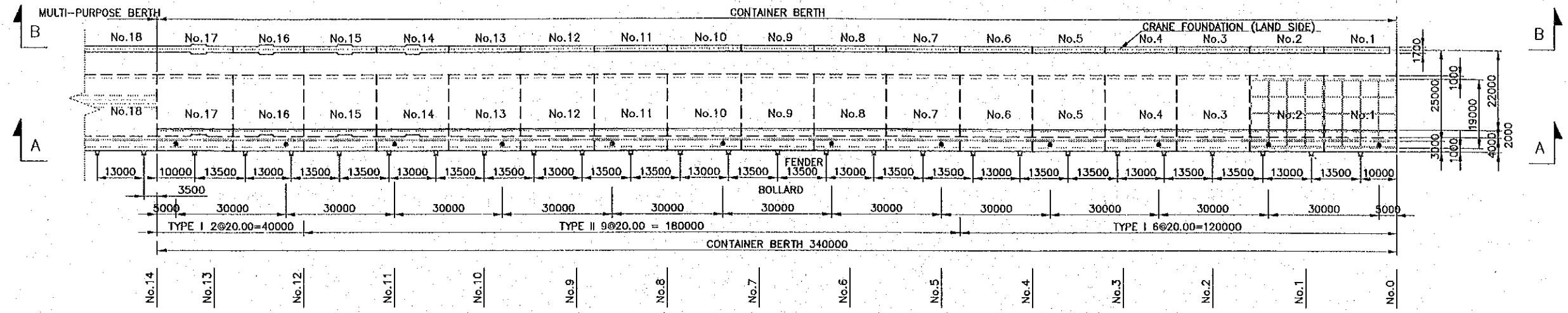
**JICA**  
**JAPAN INTERNATIONAL COOPERATION AGENCY (JICA)**  
**COMISION EJECUTIVA PORTUARIA AUTONOMA (CEPA)**

**THE DETAILED DESIGN ON PORT REACTIVATION PROJECT IN LA UNION PROVINCE OF THE REPUBLIC OF EL SALVADOR**  
 **NIPPON KOEI CO., LTD.**

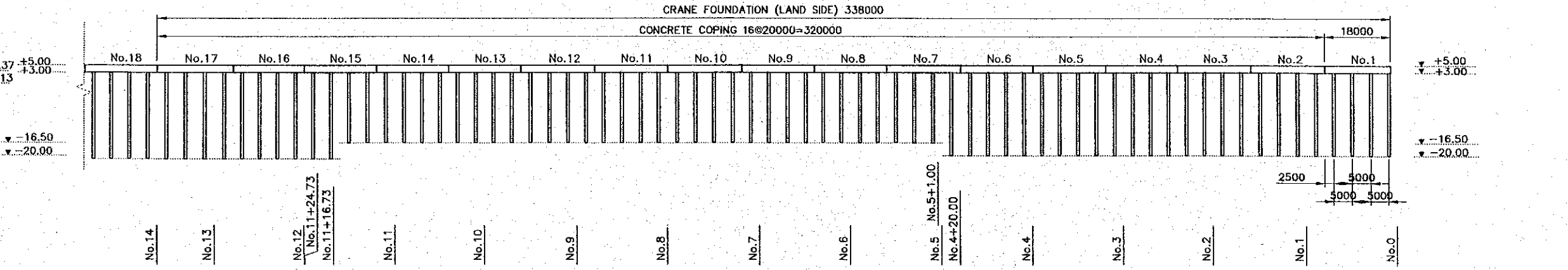
DESIGNED BY :  
 CHECKED BY :  
 APPROVED BY :

SECTION : **QUAYWALL WORK**  
 SUB-SECTION : **GENERAL**  
 TITLE : **GENERAL PLAN**

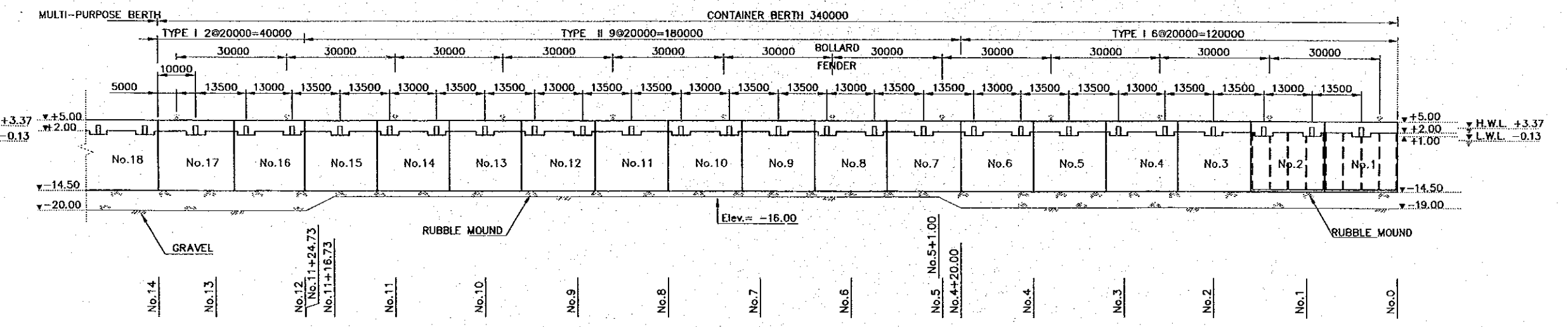
DATE : **OCTOBER/2002**  
 SCALE : **1 : 5000**  
 DRAWING NO : **QW-00-001**



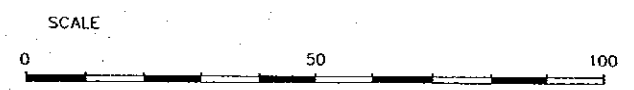
PLAN



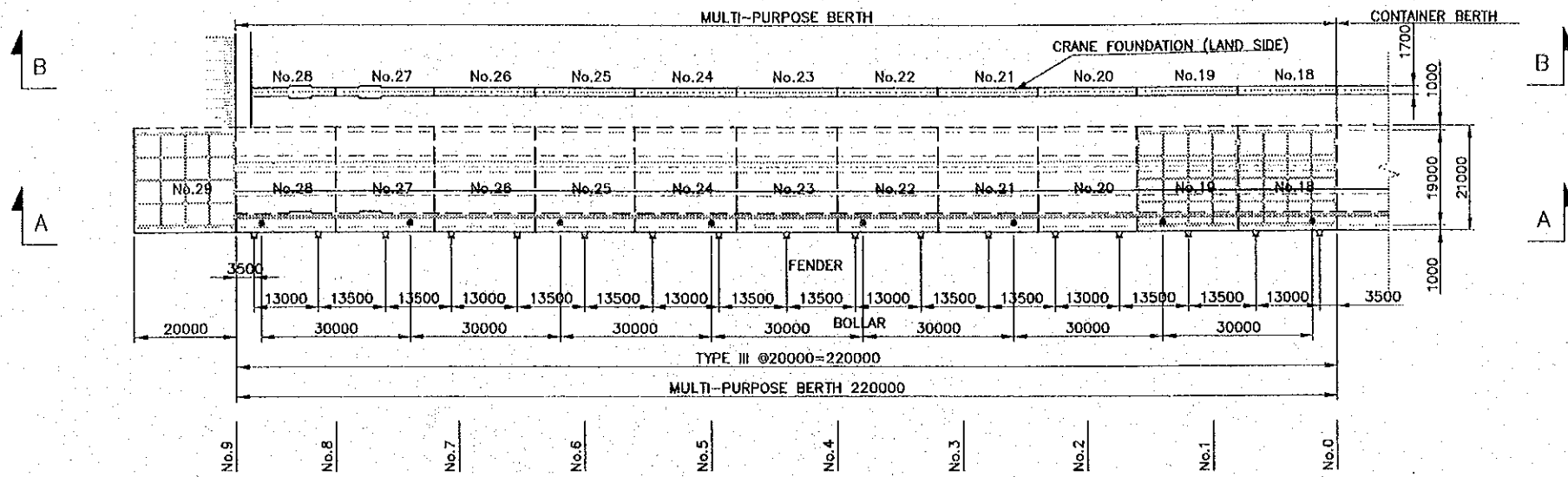
PROFILE B-B



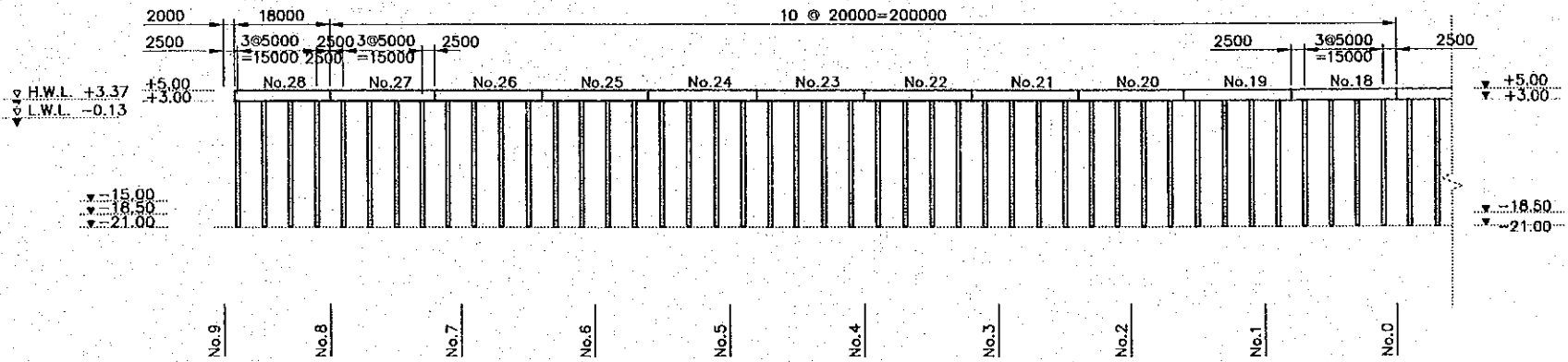
PROFILE A-A



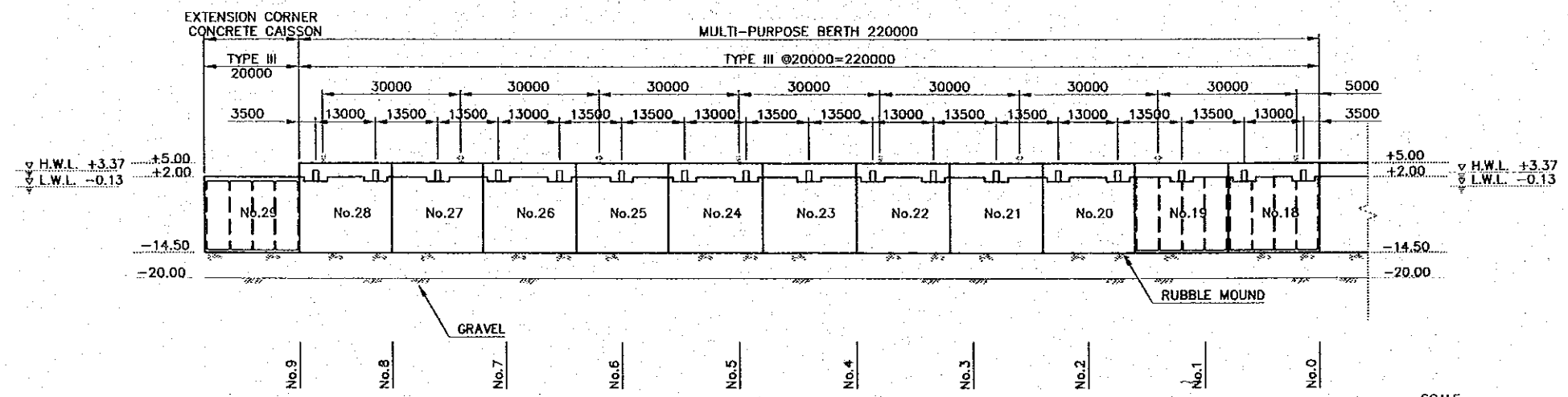
REV. NO.	DATE	COORDINATE	BY	APPROVED	DATE	JICA JAPAN INTERNATIONAL COOPERATION AGENCY (JICA) COMISION EJECUTIVA PORTUARIA AUTONOMA (CEPA)	THE DETAILED DESIGN ON PORT REACTIVATION PROJECT IN LA UNION PROVINCE OF THE REPUBLIC OF EL SALVADOR NIPPON KOEI CO., LTD.	DESIGNED BY :	SECTION : QUAYWALL WORK	DATE : OCTOBER/2002
								CHECKED BY :	SUB-SECTION : CONTAINER AND MULTI-PURPOSE BERTH	SCALE : 1 : 1250
								APPROVED BY :	TITLE : PLAN AND PROFILE CONTAINER BERTH	DRAWING NO. : QW-01-001



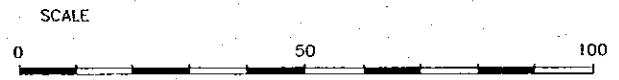
PLAN



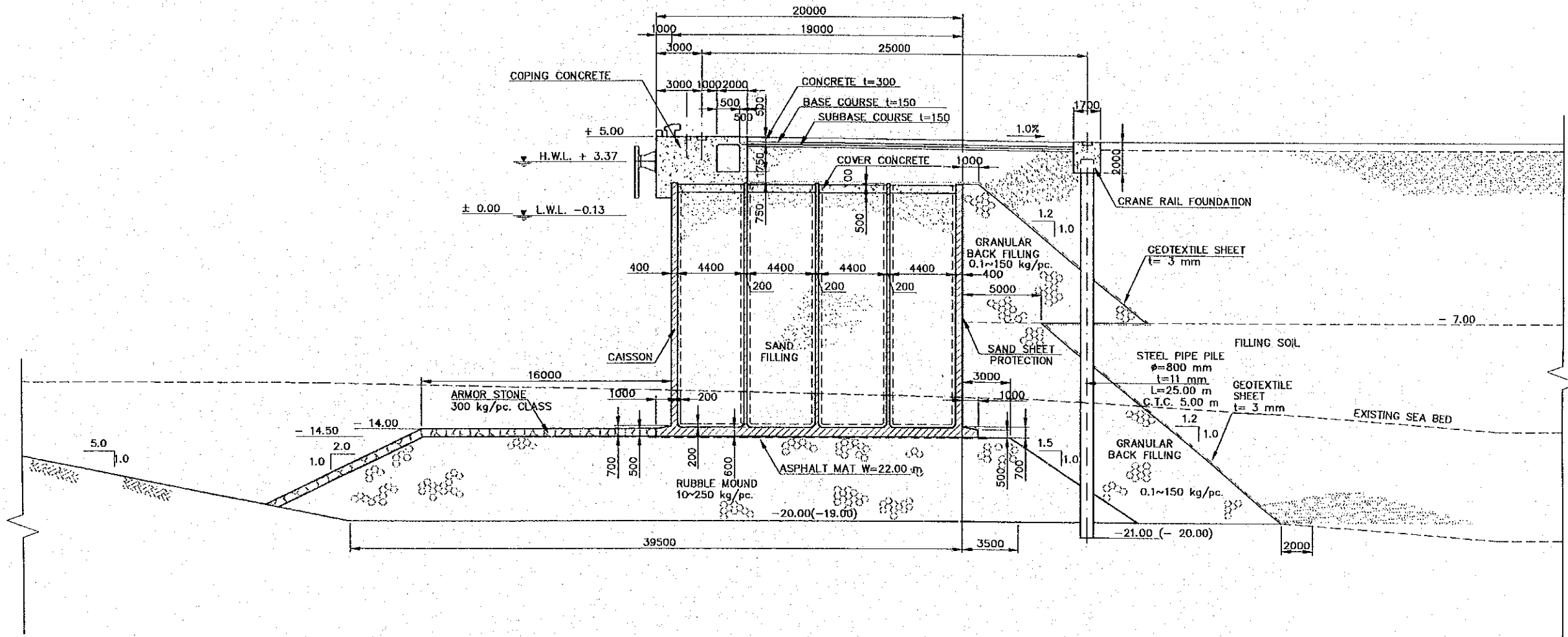
PROFILE B-B



PROFILE A-A






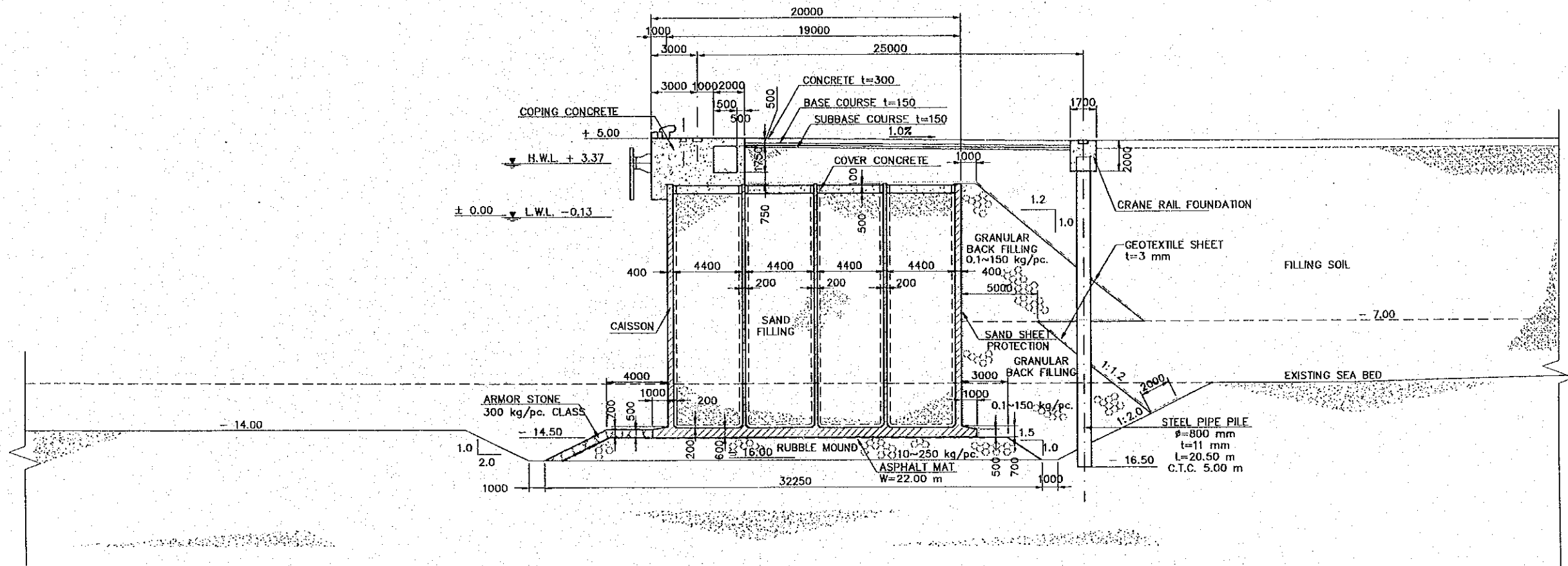
REV. NO.    DATE    COORDINATE    BY    APPROVED    DATE	<p>JICA JAPAN INTERNATIONAL COOPERATION AGENCY (JICA)</p> <p>CEPA COMISION EJECUTIVA PORTUARIA AUTONOMA (CEPA)</p>	<p>THE DETAILED DESIGN ON PORT REACTIVATION PROJECT IN LA UNION PROVINCE OF THE REPUBLIC OF EL SALVADOR</p> <p>NIPPON KOEI CO., LTD.</p>	DESIGNED BY :	SECTION : QUAYWALL WORK	DATE : OCTOBER/2002
			CHECKED BY :	SUB-SECTION : CONTAINER AND MULTI-PURPOSE BERTH	SCALE : 1 : 1250
			APPROVED BY :	TITLE : PLAN AND PROFILE MULTI-PURPOSE BERTH	DRAWING NO. : QW-01-002



TYPICAL CROSS SECTION TYPE I  
CONTAINER BERTH (-14.0 m)



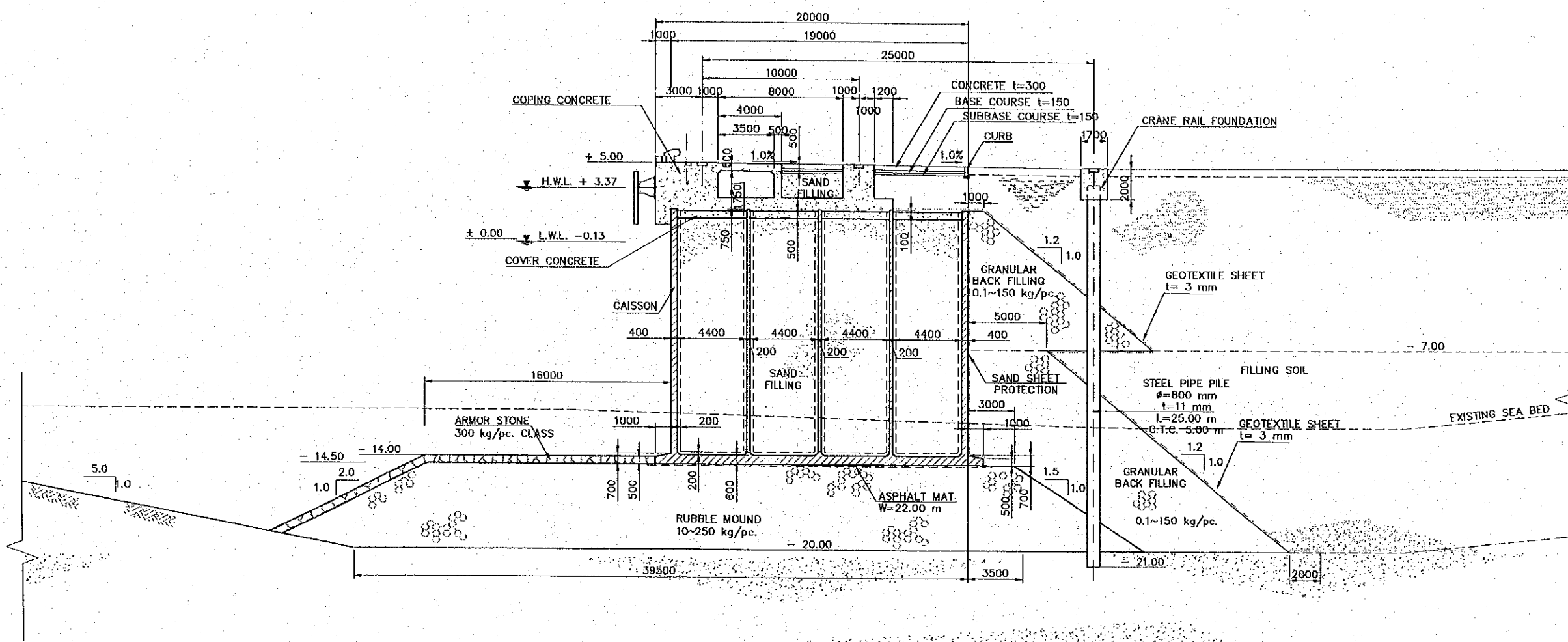
REV. NO.	DATE	COORDINATE	BY	APPROVED	DATE	 <b>JAPAN INTERNATIONAL COOPERATION AGENCY (JICA)</b>	<b>THE DETAILED DESIGN ON PORT REACTIVATION PROJECT IN LA UNION PROVINCE OF THE REPUBLIC OF EL SALVADOR</b>	DESIGNED BY :	SECTION :	DATE :
								CHECKED BY :	SUB-SECTION :	OCTOBER/2002
						 <b>COMISION EJECUTIVA PORTUARIA AUTONOMA (CEPA)</b>	 <b>NIPPON KOEI CO., LTD.</b>	APPROVED BY :	TITLE :	SCALE :
									<b>QUAYWALL WORK</b> <b>CONTAINER AND MULTI-PURPOSE BERTH</b> <b>TYPICAL CROSS SECTION</b> <b>TYPE I CONTAINER BERTH</b> <b>(-14.0 m)</b>	<b>1:300</b>
										DRAWING NO. : QW-01-003



TYPICAL CROSS SECTION TYPE II  
CONTAINER BERTH (-14.0m)



REV. NO.		DATE		COORDINATE		BY		APPROVED		DATE	
JAPAN INTERNATIONAL COOPERATION AGENCY (JICA)				COMISION EJECUTIVA PORTUARIA AUTONOMA (CEPA)				NIPPON KOEI CO., LTD.			
THE DETAILED DESIGN ON PORT REACTIVATION PROJECT IN LA UNION PROVINCE OF THE REPUBLIC OF EL SALVADOR						DESIGNED BY :		SECTION :		DATE :	
						CHECKED BY :		SUB-SECTION :		OCTOBER/2002	
						APPROVED BY :		TITLE :		SCALE :	
								QUAYWALL WORK CONTAINER AND MULTI-PURPOSE BERTH TYPICAL CROSS SECTION TYPE II CONTAINER BERTH (-14.0m)		1:300	
										DRAWING NO. : QW-01-004	



TYPICAL CROSS SECTION TYPE III  
 MULTI-PURPOSE BERTH (-14.0m)



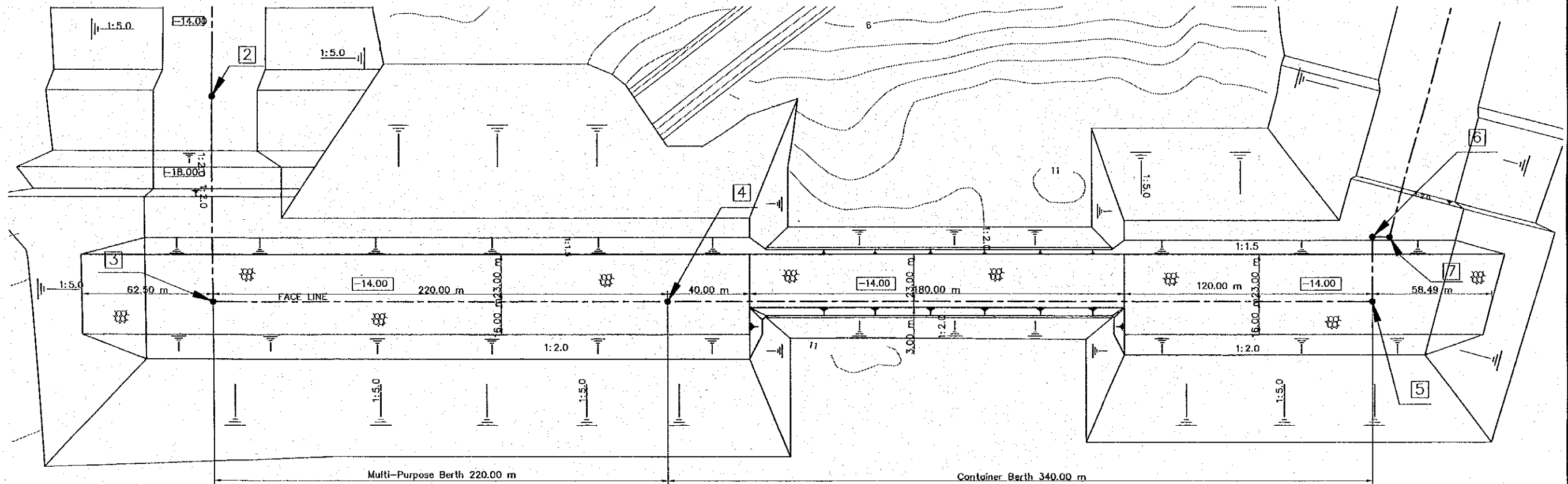
<b>JAPAN INTERNATIONAL COOPERATION AGENCY (JICA)</b>		<b>THE DETAILED DESIGN ON PORT REACTIVATION PROJECT IN LA UNION PROVINCE OF THE REPUBLIC OF EL SALVADOR</b>		DESIGNED BY : CHECKED BY : APPROVED BY :	SECTION : QUAYWALL WORK SUB-SECTION : CONTAINER AND MULTI-PURPOSE BERTH TITLE : TYPICAL CROSS SECTION TYPE III MULTI-PURPOSE BERTH (-14.0m)	DATE : OCTOBER/2002 SCALE : 1:300 DRAWING NO: QW-01-005
<b>COMISION EJECUTIVA PORTUARIA AUTONOMA (CEPA)</b>		<b>NIPPON KOEI CO., LTD.</b>				
REV. NO.	DATE	COORDINATE	BY	APPROVED	DATE	





MULTI-PURPOSE BERTH ← → CONTAINER BERTH

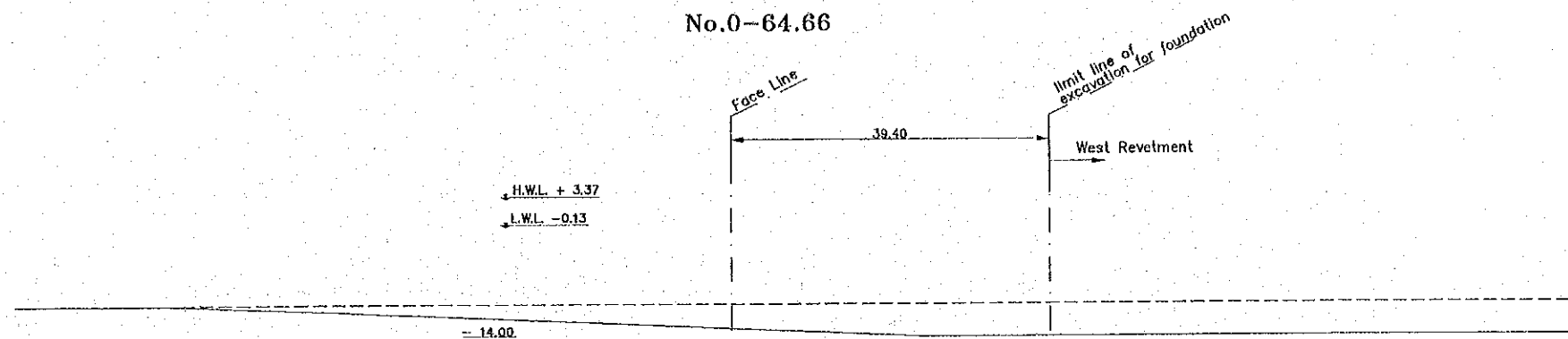
- No. 9
- No. 8
- No. 7
- No. 6
- No. 5
- No. 4
- No. 3
- No. 2
- No. 1
- No. 14/No. 0
- No. 13
- No. 12
- No. 11+23.00
- No. 11
- No. 10
- No. 9
- No. 8
- No. 7
- No. 6
- No. 5
- No. 4+20.00
- No. 4
- No. 3
- No. 2
- No. 1
- No. 0



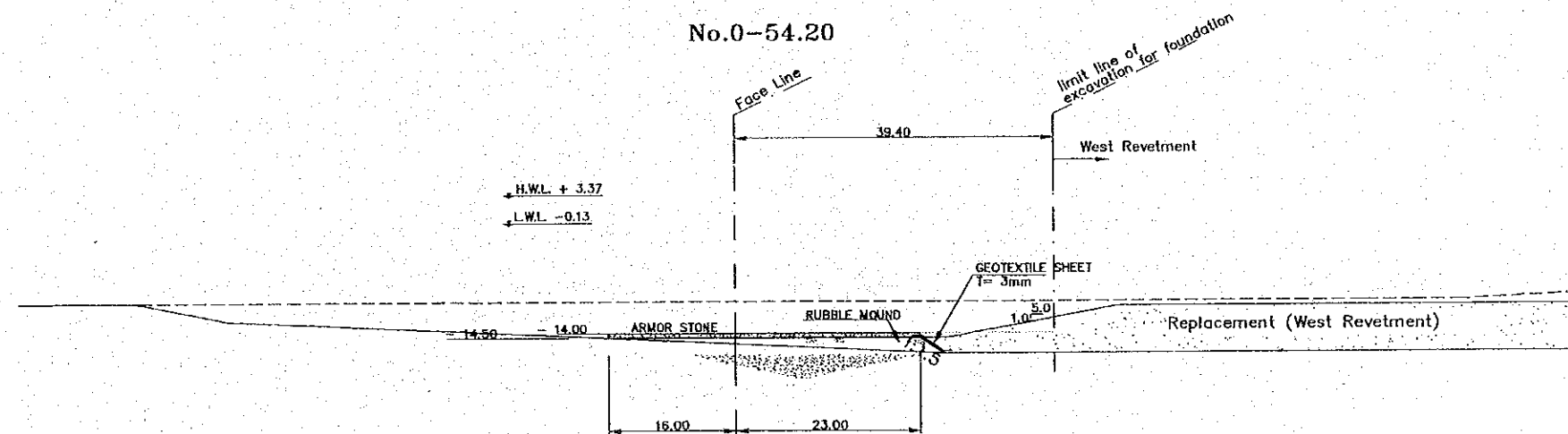
NOTE:  
 [5] DETAIL OF COORDINATE IS SHOWN  
 IN PLAN OF REVETMENT DRAWING  
 RV-00-001

<table border="1" style="width: 100%; border-collapse: collapse;"> <tr> <th>REV. NO.</th> <th>DATE</th> <th>COORDINATE</th> <th>BY</th> <th>APPROVED</th> <th>DATE</th> </tr> <tr> <td> </td> <td> </td> <td> </td> <td> </td> <td> </td> <td> </td> </tr> </table>	REV. NO.	DATE	COORDINATE	BY	APPROVED	DATE							<p>JAPAN INTERNATIONAL COOPERATION AGENCY (JICA)</p> <p>COMISION EJECUTIVA PORTUARIA AUTONOMA (CEPA)</p>	<p>THE DETAILED DESIGN ON PORT REACTIVATION PROJECT IN LA UNION PROVINCE OF THE REPUBLIC OF EL SALVADOR</p> <p>NIPPON KOEI CO., LTD.</p>	DESIGNED BY : CHECKED BY : APPROVED BY :	SECTION : QUAYWALL WORK SUB-SECTION : CONTAINER AND MULTI-PURPOSE BERTH TITLE : <b>PLAN OF RUBBLE MOUND</b>	DATE : OCTOBER/2002 SCALE : 1 : 2,000 DRAWING NO. : QW-01-007
REV. NO.	DATE	COORDINATE	BY	APPROVED	DATE												

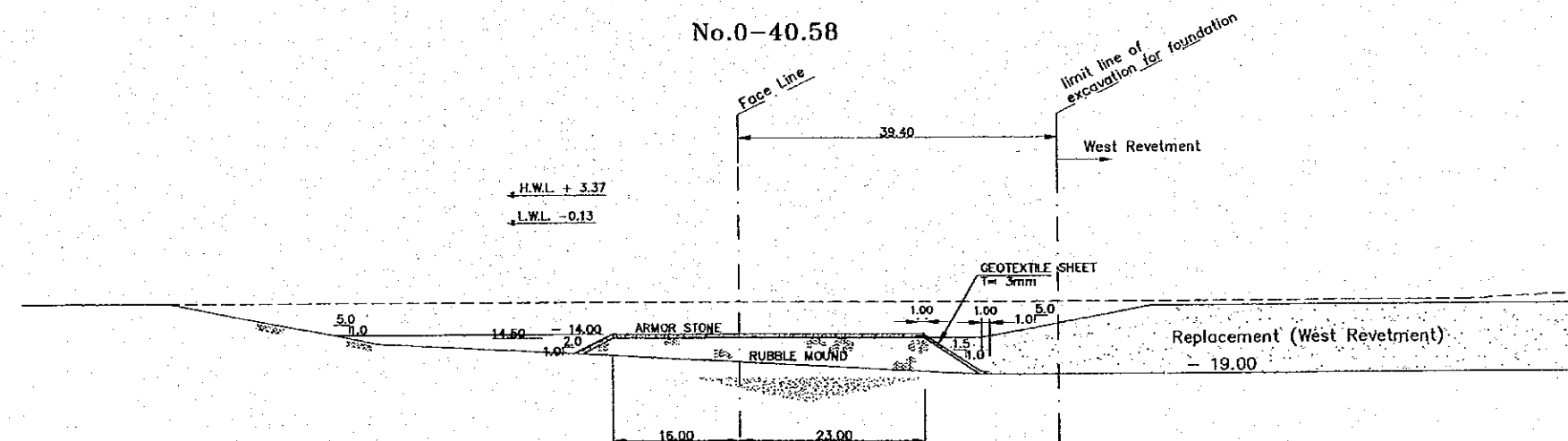
No.0-64.66



No.0-54.20

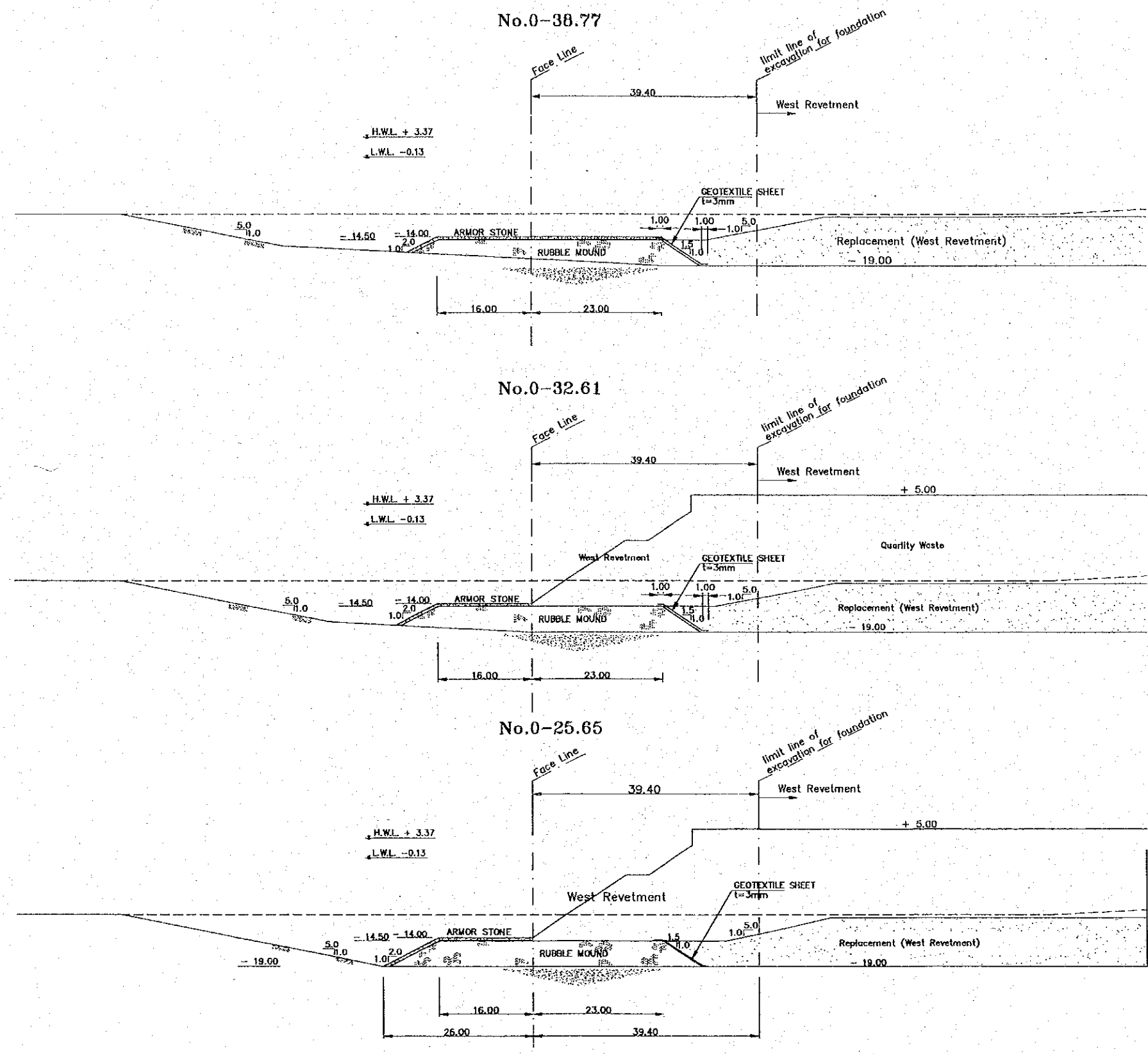


No.0-40.58



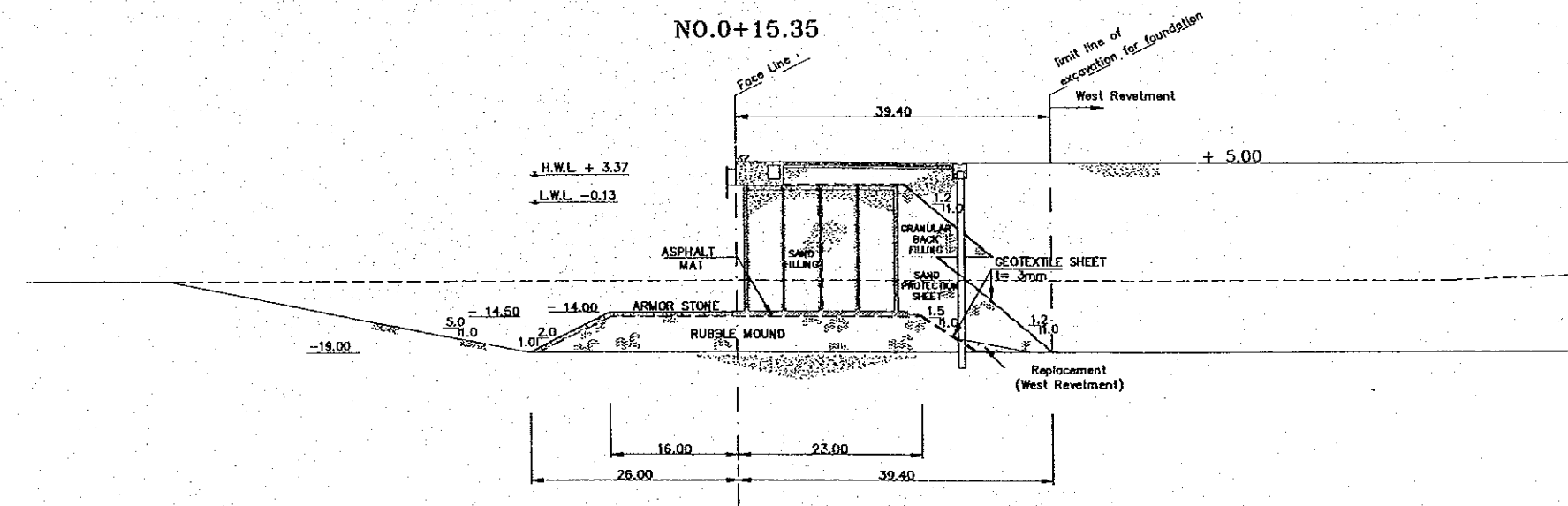
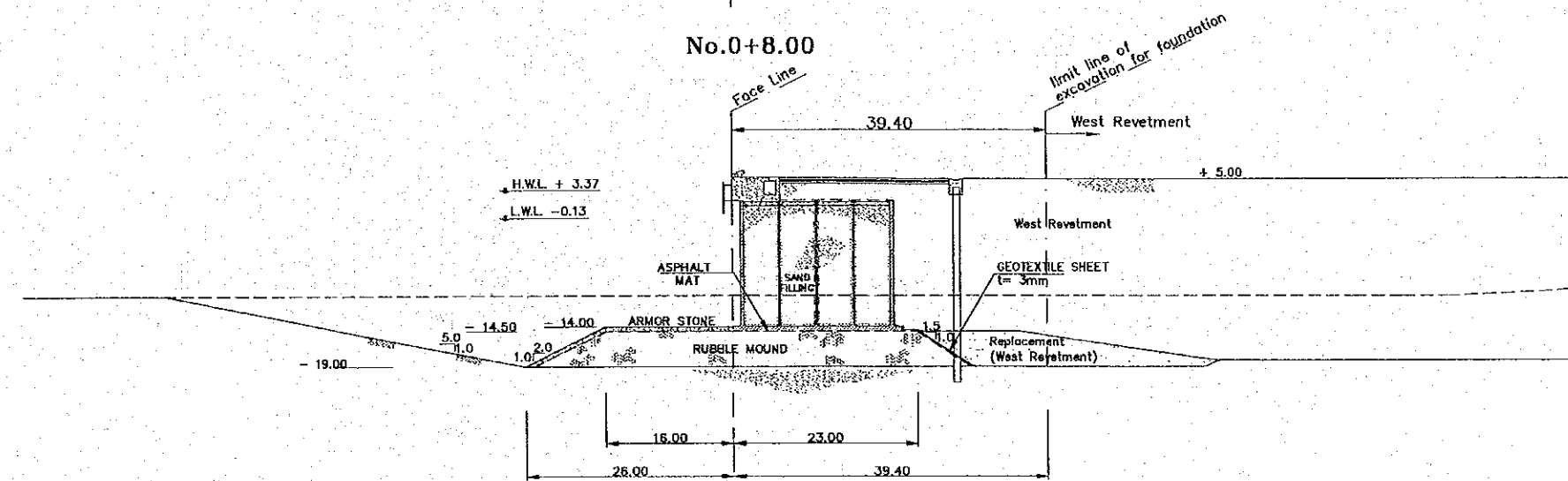
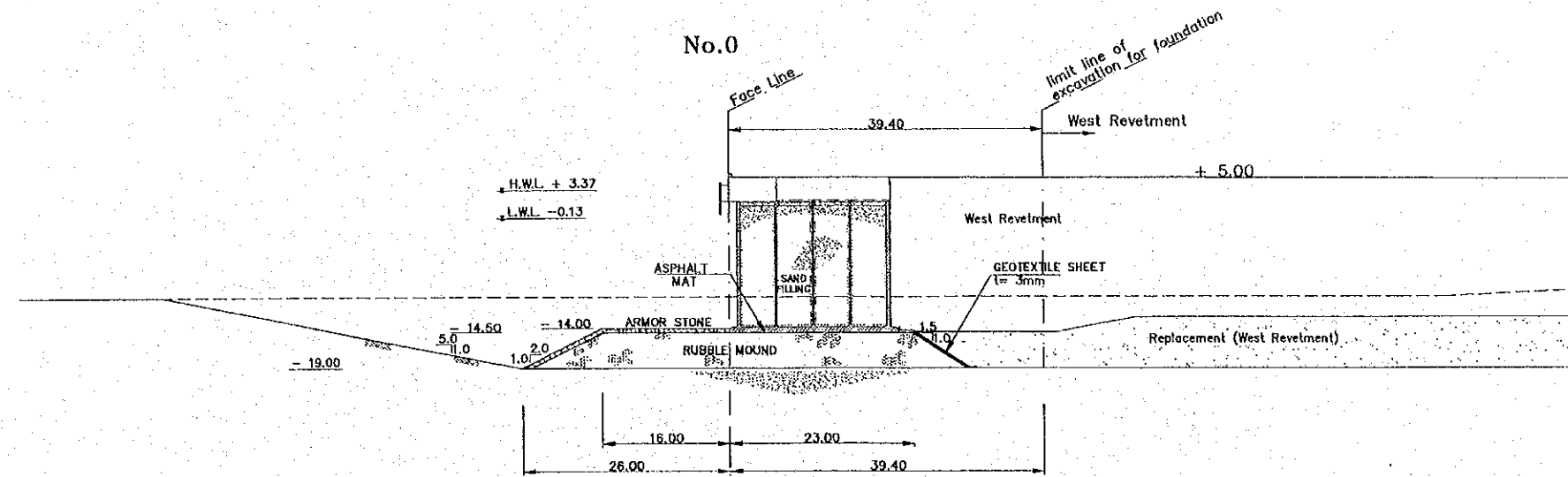
LEGEND:  
 ----- EXISTING ELEVATION

REV. NO.	DATE	COORDINATE	BY	APPROVED	DATE	JICA JAPAN INTERNATIONAL COOPERATION AGENCY (JICA) COMISION EJECUTIVA PORTUARIA AUTONOMA (CEPA)	NIPPON KOEI CO., LTD.	DESIGNED BY :	SECTION : QUAYWALL WORK	DATE : OCTOBER/2002
					CHECKED BY :			SUB-SECTION : CONTAINER AND MULTI-PURPOSE BERTH	SCALE : 1:800	
					APPROVED BY :			TITLE : CROSS SECTIONS (1) (CONTAINER)	DRAWING NO: QW-01-008	



LEGEND:  
 ----- EXISTING ELEVATION

JAPAN INTERNATIONAL COOPERATION AGENCY (JICA)		COMISION EJECUTIVA PORTUARIA AUTONOMA (CEPA)		THE DETAILED DESIGN ON PORT REACTIVATION PROJECT IN LA UNION PROVINCE OF THE REPUBLIC OF EL SALVADOR NIPPON KOEI CO., LTD.		DESIGNED BY : CHECKED BY : APPROVED BY :	SECTION : QUAYWALL WORK SUB-SECTION : CONTAINER AND MULTI-PURPOSE BERTH TITLE : CROSS SECTIONS (2) (CONTAINER)	DATE : OCTOBER/2002 SCALE : 1:800 DRAWING NO. : QW-01-009
REV. NO.	DATE	COORDINATE	BY	APPROVED	DATE			



LEGEND:  
 ----- EXISTING ELEVATION

REV. NO.	DATE	COORDINATE	BY	APPROVED	DATE



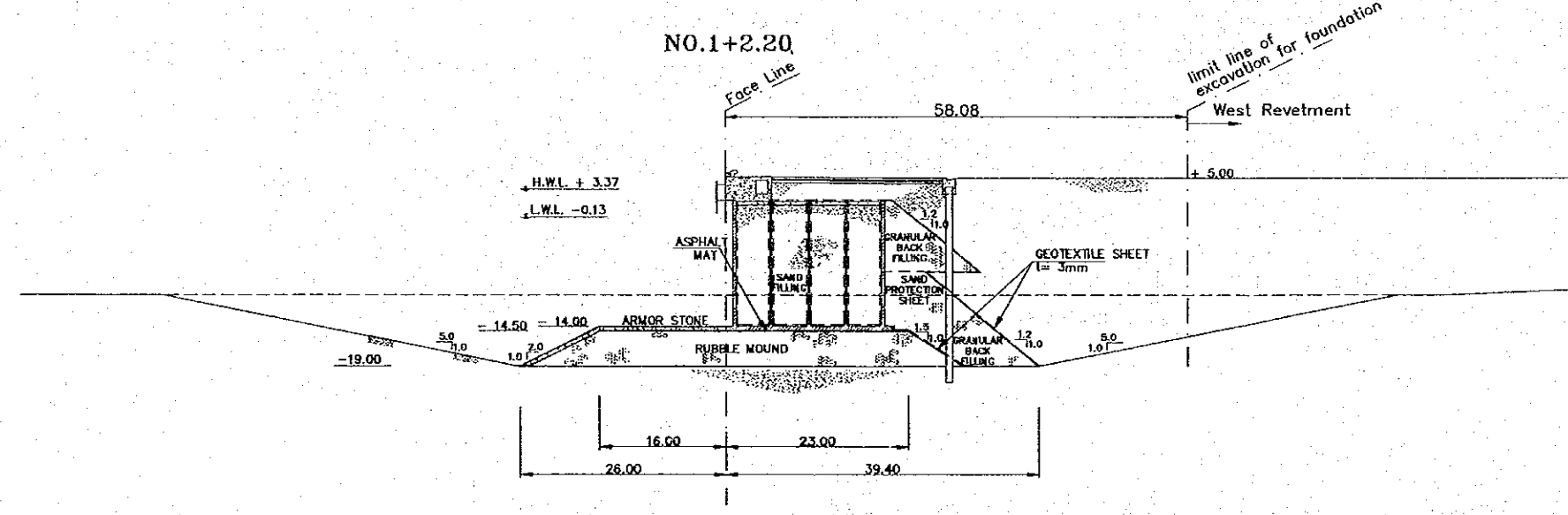
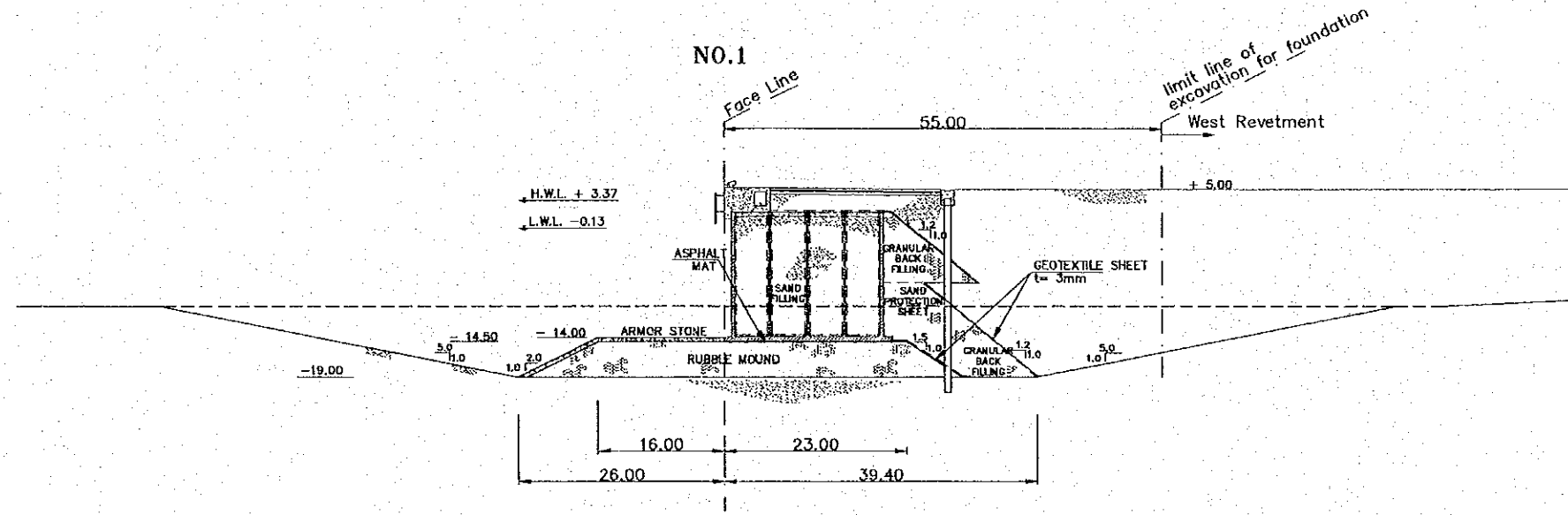
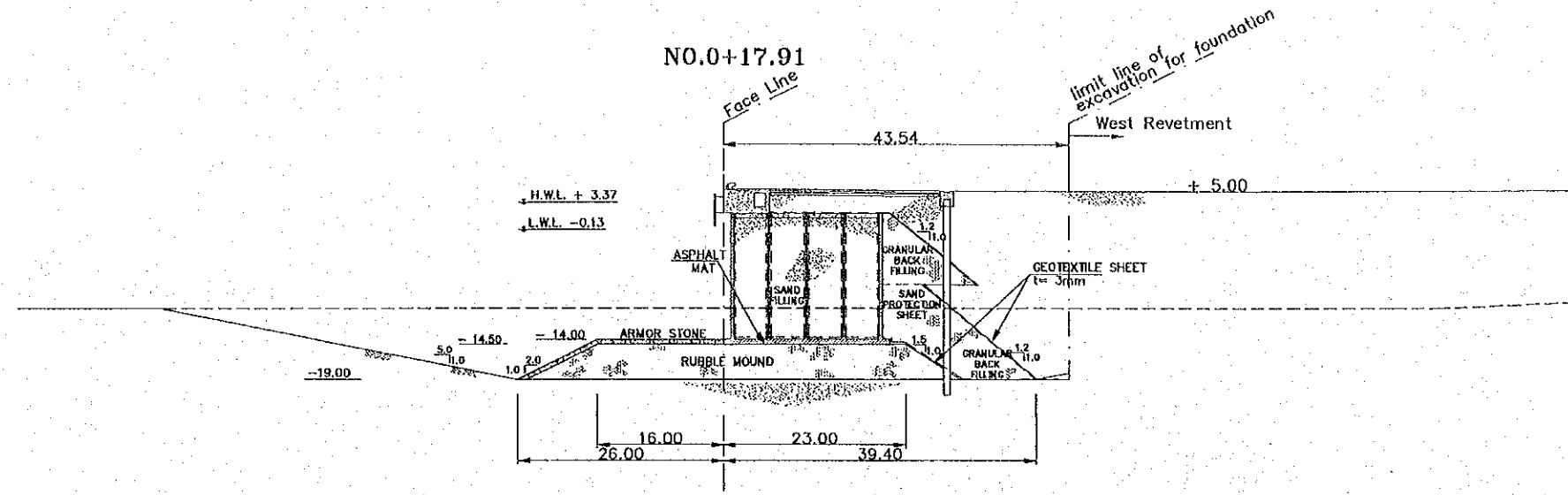
JAPAN INTERNATIONAL COOPERATION AGENCY (JICA)  
 COMISION EJECUTIVA PORTUARIA AUTONOMA (CEPA)

THE DETAILED DESIGN ON PORT REACTIVATION PROJECT IN LA UNION PROVINCE OF THE REPUBLIC OF EL SALVADOR  
 NIPPON KOEI CO., LTD.

DESIGNED BY :  
 CHECKED BY :  
 APPROVED BY :

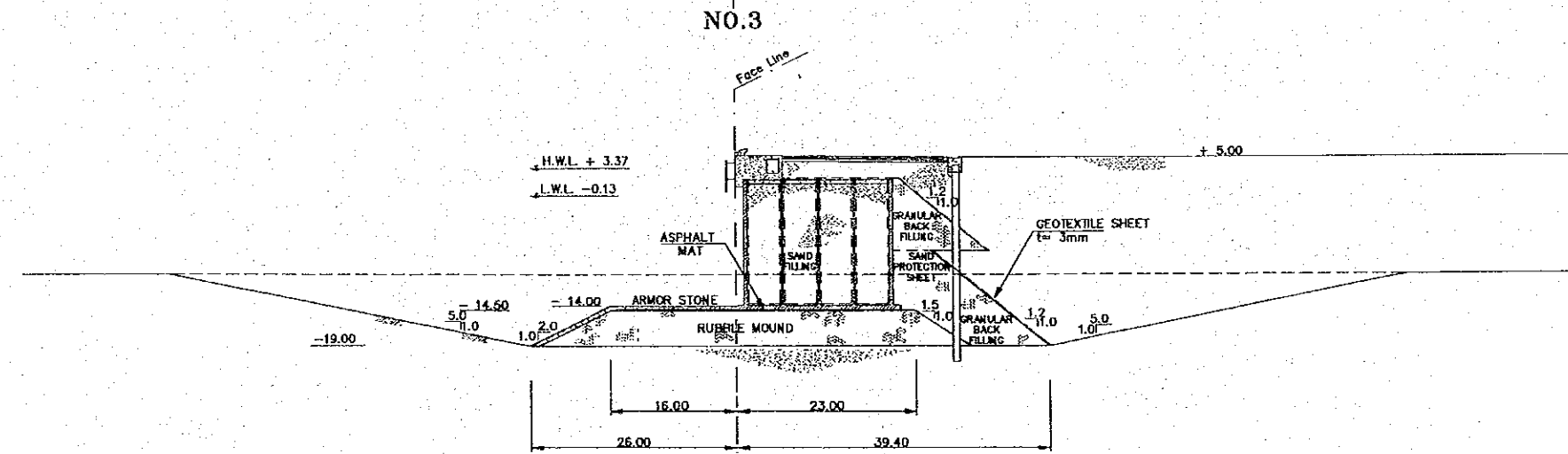
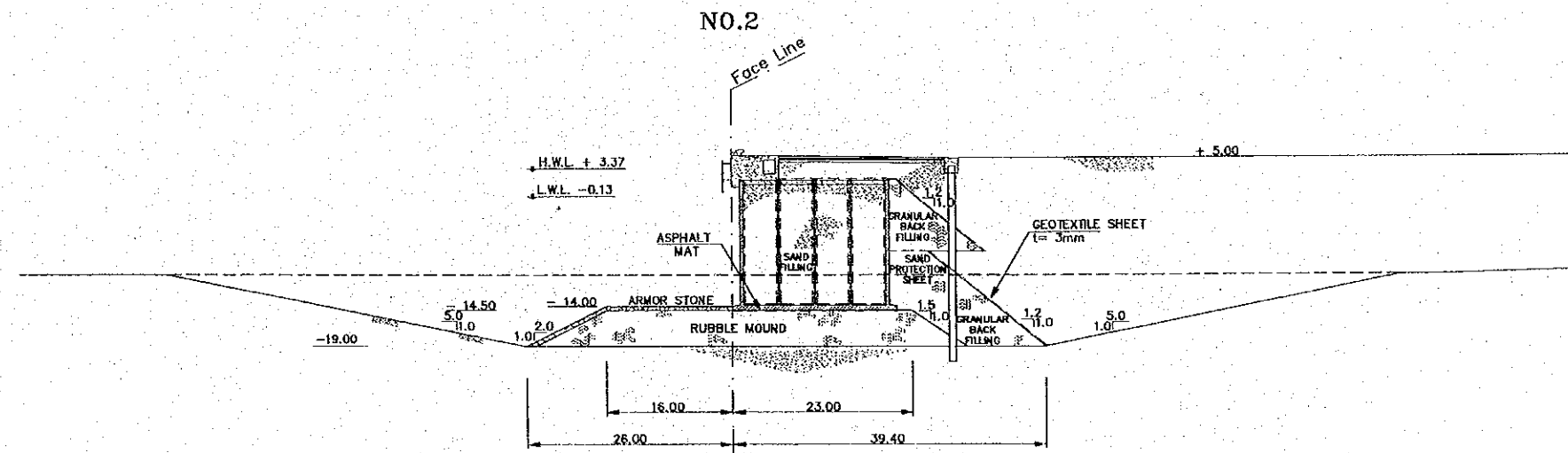
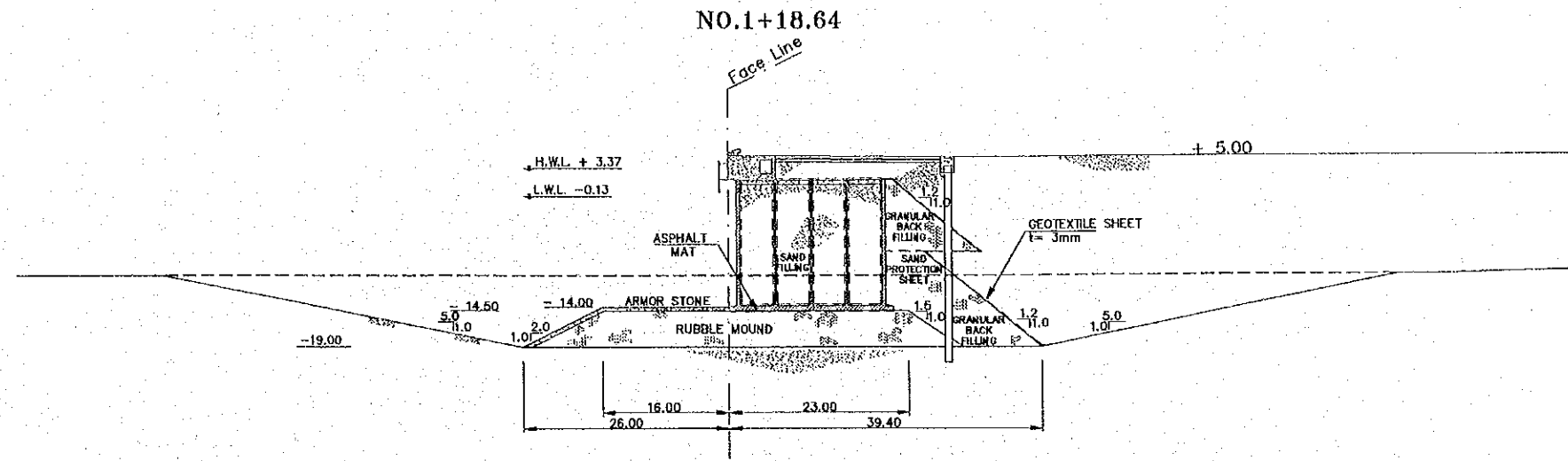
SECTION : QUAYWALL WORK  
 SUB-SECTION : CONTAINER AND MULTI-PURPOSE BERTH  
 TITLE : CROSS SECTIONS (3) (CONTAINER)

DATE : OCTOBER/2002  
 SCALE : 1:800  
 DRAWING NO. : QW-01-010



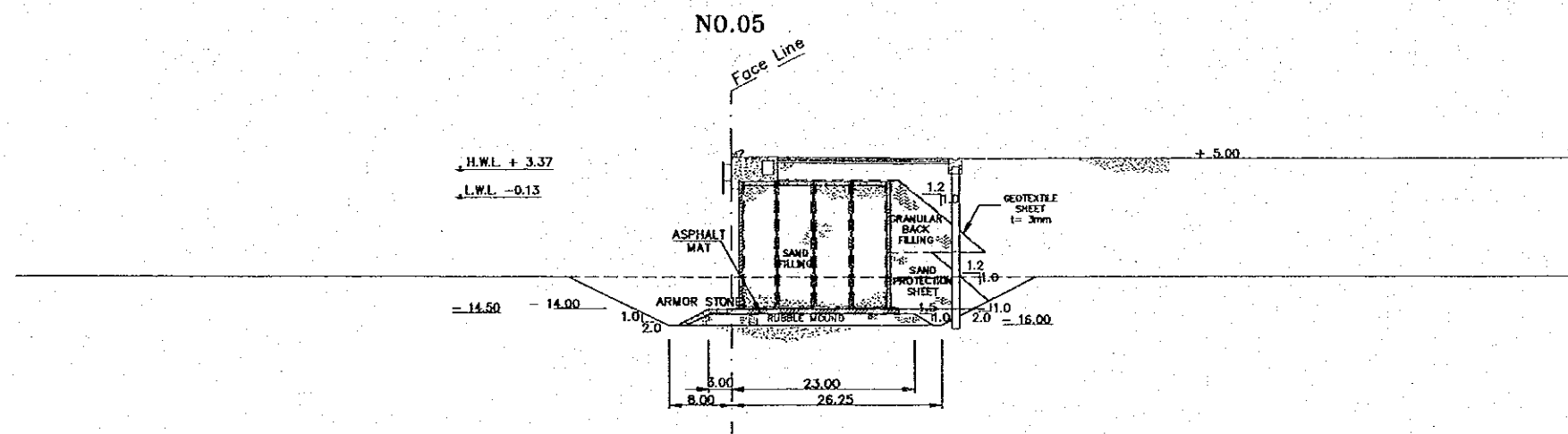
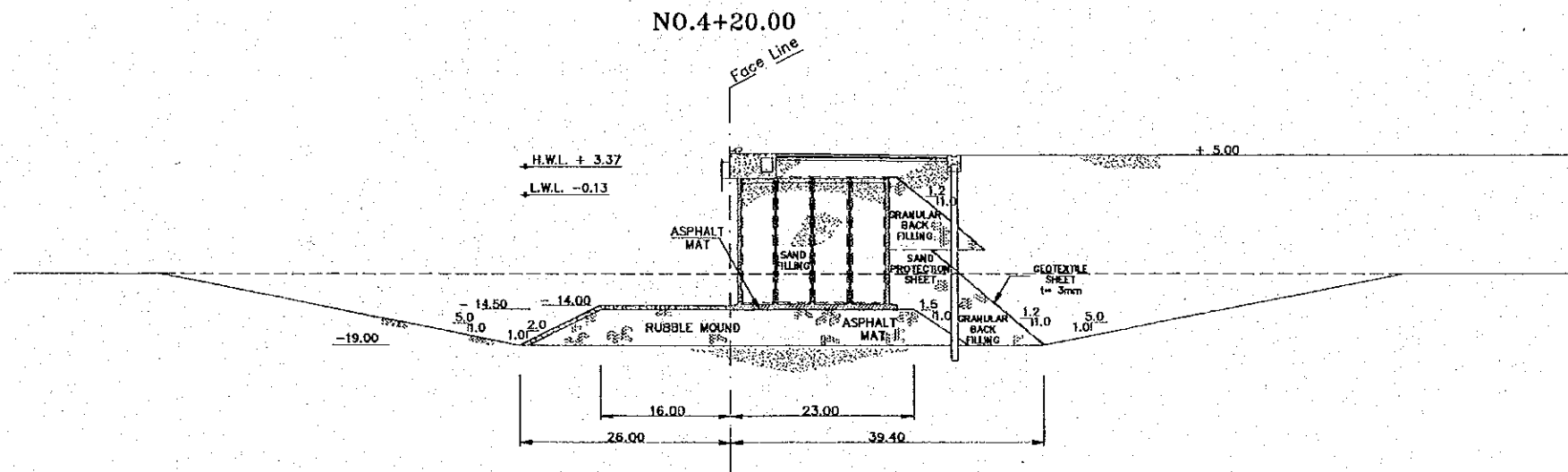
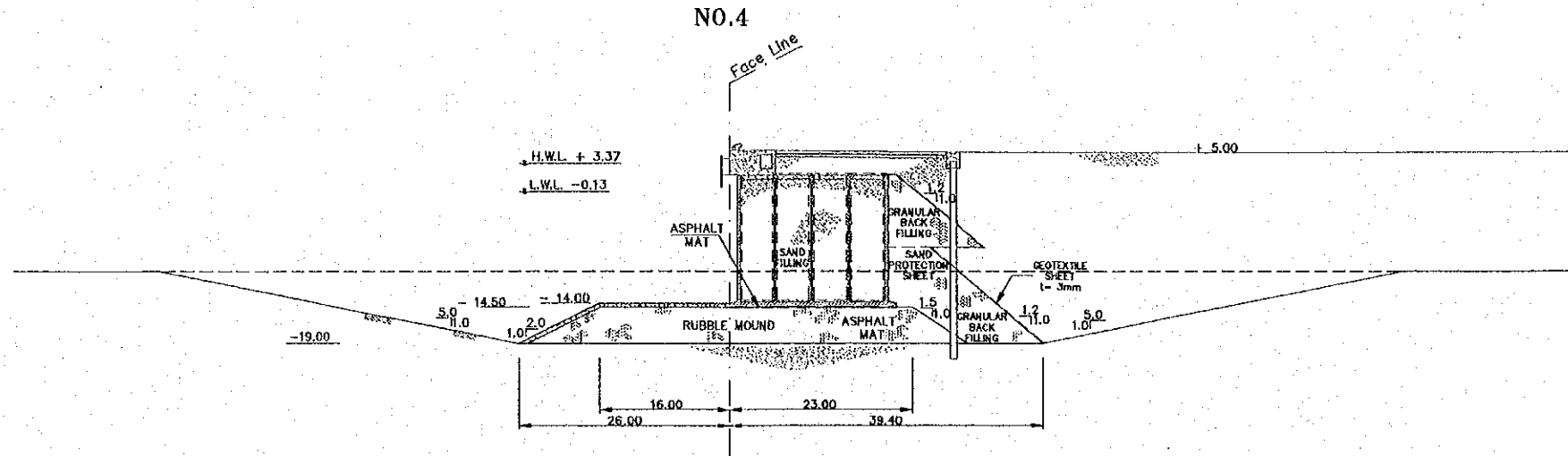
LEGEND:  
 ----- EXISTING ELEVATION

REV. NO. DATE	COORDINATE	BY	APPROVED DATE	JICA JAPAN INTERNATIONAL COOPERATION AGENCY (JICA)	COMISION EJECUTIVA PORTUARIA AUTONOMA (CEPA)	THE DETAILED DESIGN ON PORT REACTIVATION PROJECT IN LA UNION PROVINCE OF THE REPUBLIC OF EL SALVADOR NIPPON KOEI CO., LTD.	DESIGNED BY :	SECTION : QUAYWALL WORK	DATE : OCTOBER/2002
							CHECKED BY :	SUB-SECTION : CONTAINER AND MULTI-PURPOSE BERTH	SCALE : 1:800
							APPROVED BY :	TITLE : CROSS SECTIONS (4) (CONTAINER)	DRAWING NO. : QW-01-011



LEGEND:  
 ----- EXISTING ELEVATION

	<b>JICA</b> JAPAN INTERNATIONAL COOPERATION AGENCY (JICA)	<b>CEPA</b> COMISION EJECUTIVA PORTUARIA AUTONOMA (CEPA)	<b>NIPPON KOEI CO., LTD.</b>	DESIGNED BY : CHECKED BY : APPROVED BY :	SECTION : QUAYWALL WORK SUB-SECTION : CONTAINER AND MULTI-PURPOSE BERTH TITLE : <p style="text-align: center; font-weight: bold;">CROSS SECTIONS (5) (CONTAINER)</p>	DATE : OCTOBER/2002 SCALE : 1:800 DRAWING NO : QW-01-012
REV. NO.	DATE	COORDINATE	BY	APPROVED	DATE	



LEGEND:  
 ----- EXISTING ELEVATION

REV. NO.	DATE	COORDINATE	BY	APPROVED	DATE

**JICA**  
 JAPAN INTERNATIONAL  
 COOPERATION AGENCY  
 (JICA)

**Cepa**  
 COMISION EJECUTIVA  
 PORTUARIA AUTONOMA  
 (CEPA)

THE DETAILED DESIGN  
 ON PORT REACTIVATION PROJECT  
 IN LA UNION PROVINCE  
 OF THE REPUBLIC OF EL SALVADOR

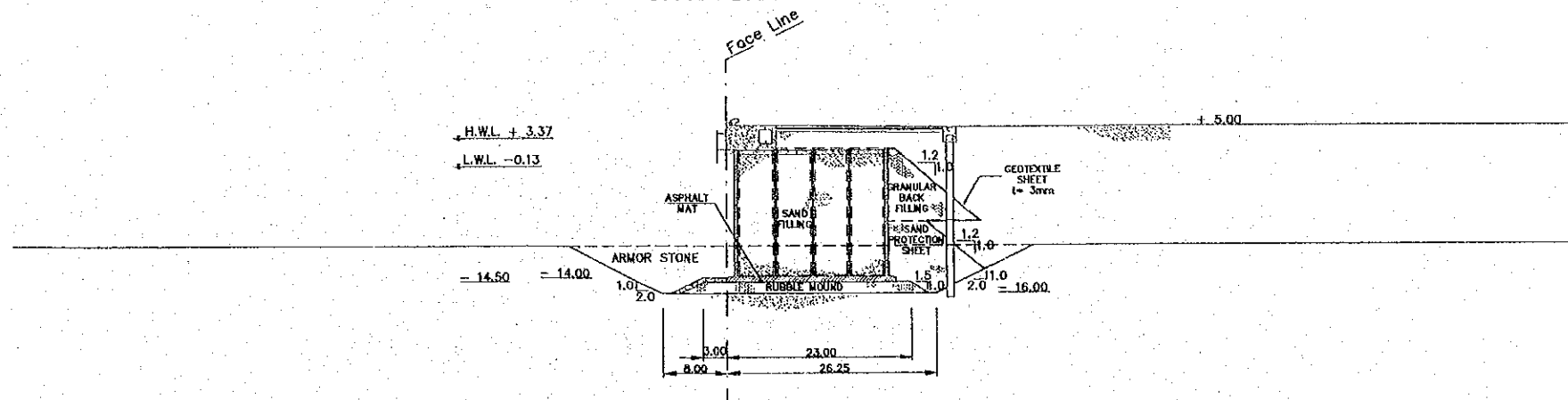
**NK** NIPPON KOEI CO., LTD.

DESIGNED BY :  
 CHECKED BY :  
 APPROVED BY :

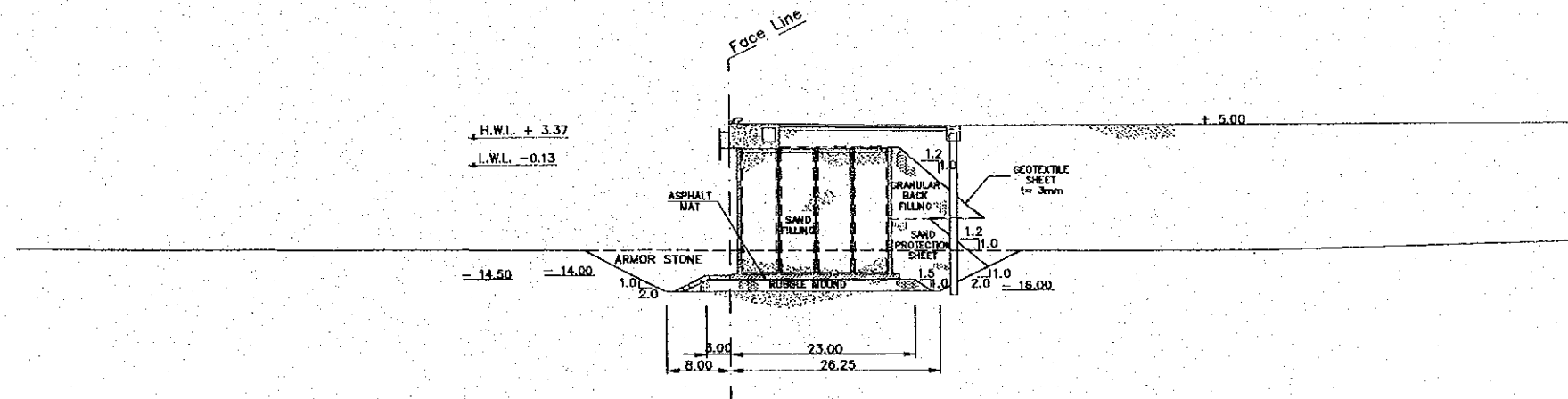
SECTION : QUAYWALL WORK  
 SUB-SECTION : CONTAINER AND MULTI-PURPOSE BERTH  
 TITLE :  
**CROSS SECTIONS (6)**  
 (CONTAINER)

DATE : OCTOBER/2002  
 SCALE : 1:800  
 DRAWING NO.: QW-01-013

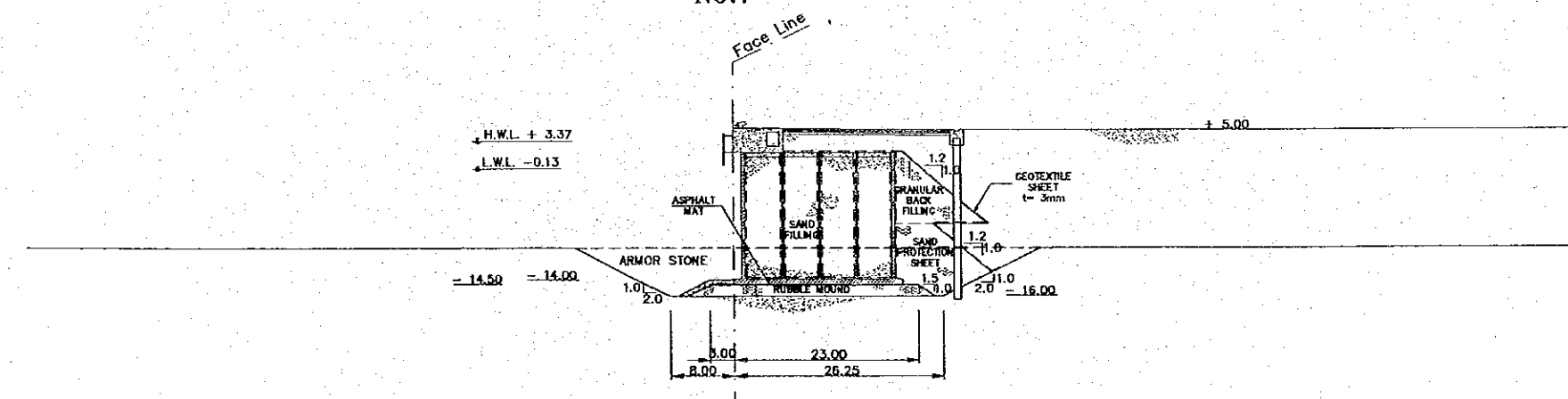
NO.5+1.00






NO.6



NO.7

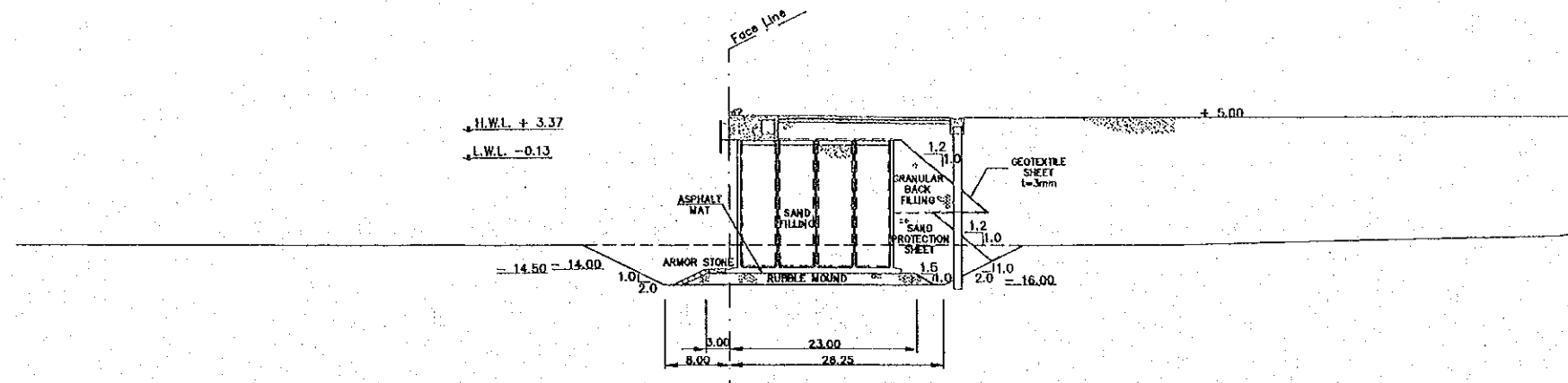


LEGEND:  
 ----- EXISTING ELEVATION

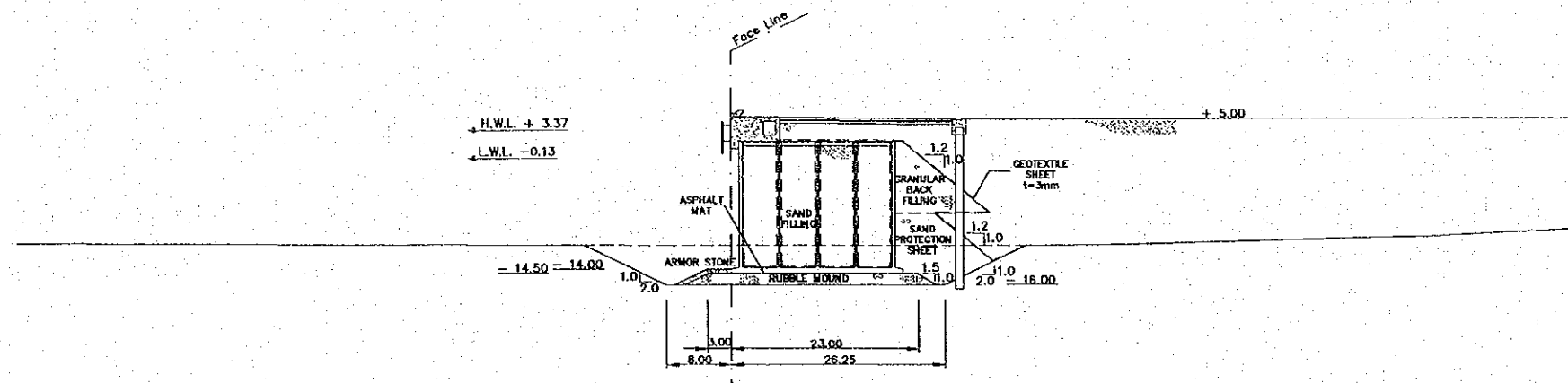
REV. NO.	DATE	COORDINATE	BY	APPROVED	DATE	 JAPAN INTERNATIONAL COOPERATION AGENCY (JICA)	 COMISION EJECUTIVA PORTUARIA AUTONOMA (CEPA)	 NIPPON KOEI CO., LTD.	DESIGNED BY :	SECTION : QUAYWALL WORK	DATE : OCTOBER/2002
									CHECKED BY :	SUB-SECTION : CONTAINER AND MULTI-PURPOSE BERTH	SCALE : 1:800
									APPROVED BY :	TITLE : CROSS SECTIONS (7) (CONTAINER)	DRAWING NO. : QW-01-014



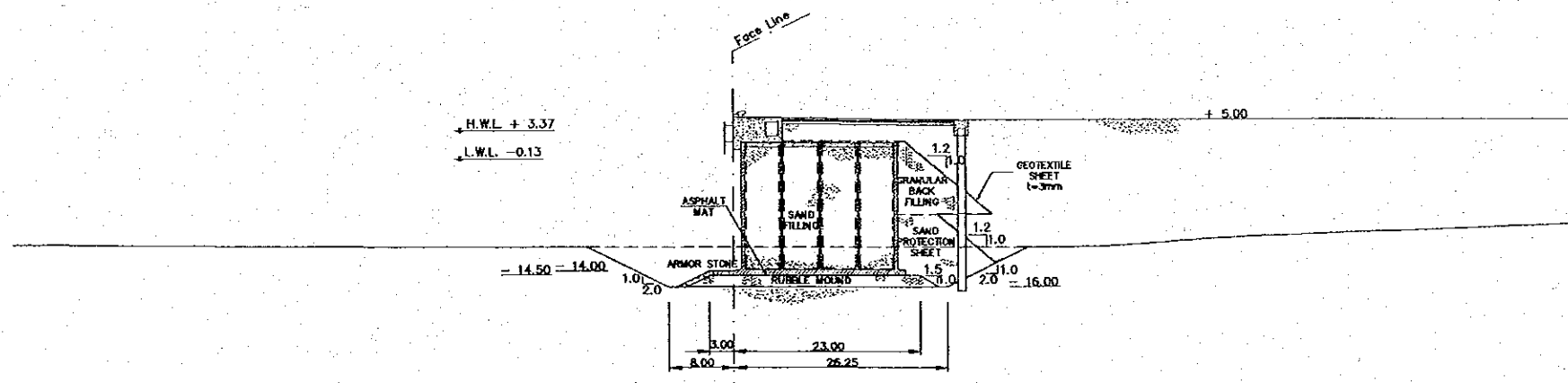
NO.8



NO.9



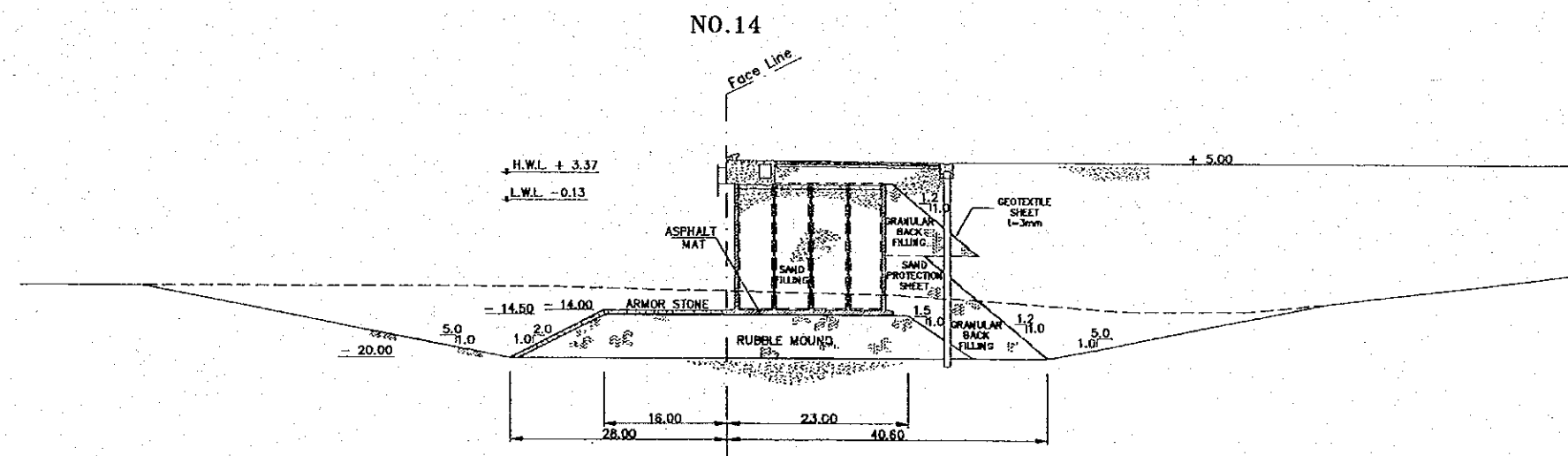
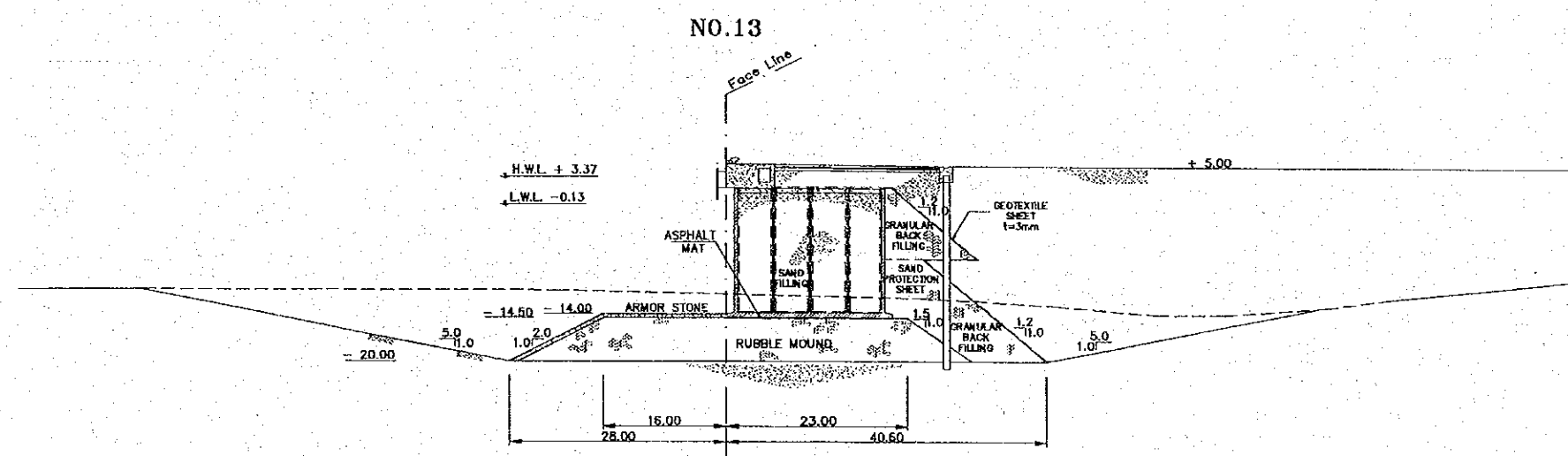
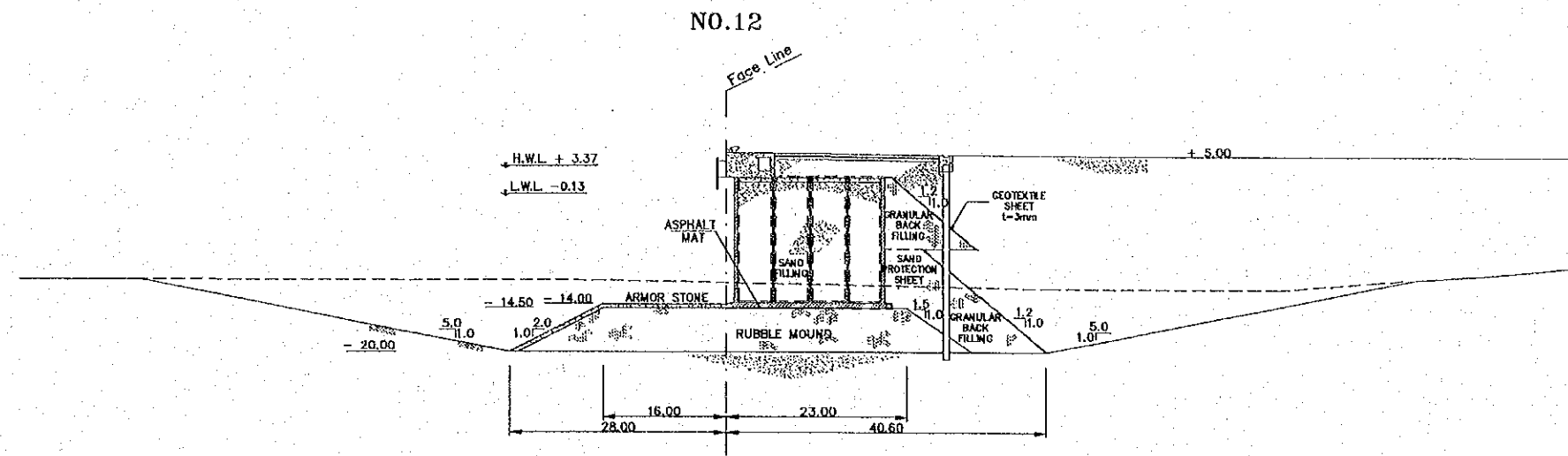
NO.10



LEGEND:  
 ----- EXISTING ELEVATION

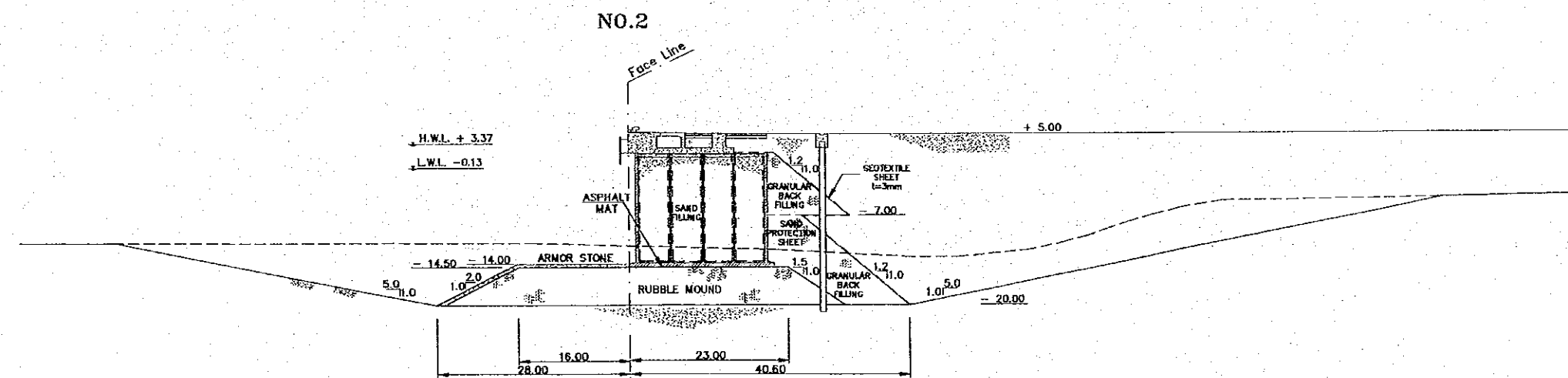
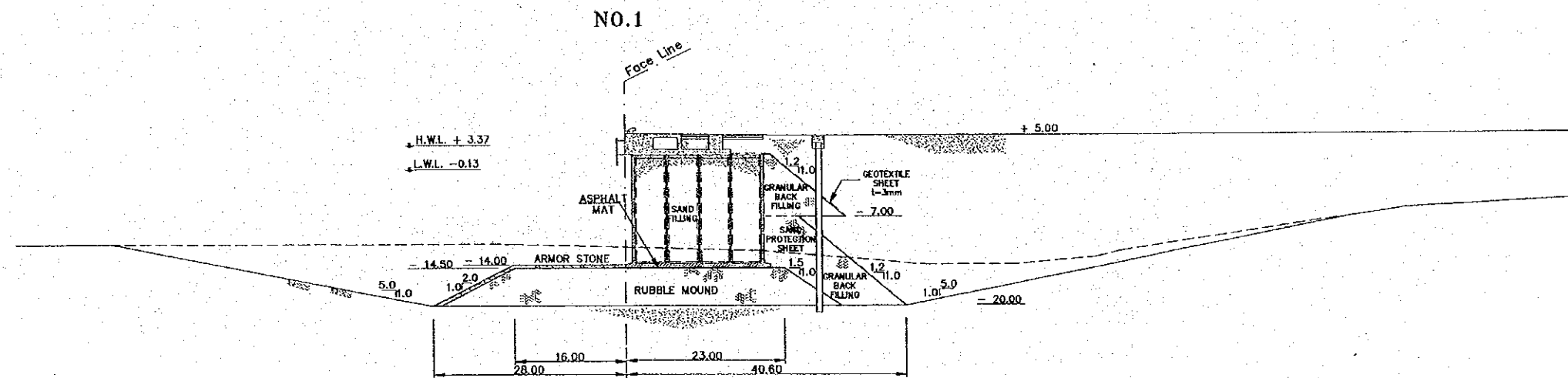
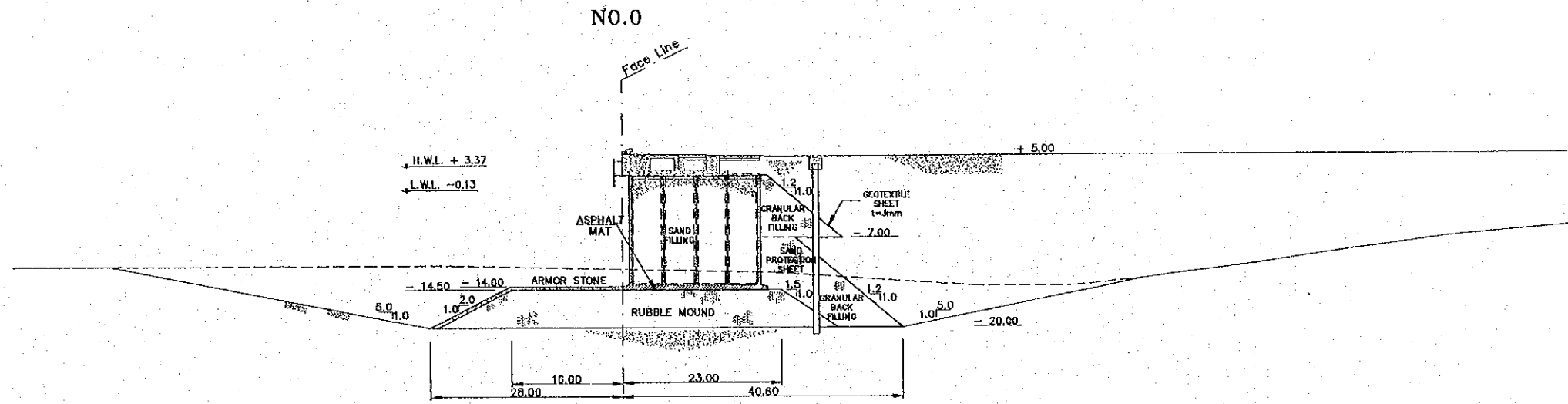
REV. NO.		DATE		COORDINATE		BY		APPROVED		DATE		JICA JAPAN INTERNATIONAL COOPERATION AGENCY (JICA)	COMISION EJECUTIVA PORTUARIA AUTONOMA (CEPA)	THE DETAILED DESIGN ON PORT REACTIVATION PROJECT IN LA UNION PROVINCE OF THE REPUBLIC OF EL SALVADOR NIPPON KOEI CO., LTD.	DESIGNED BY :	SECTION :	DATE :
															SUB-SECTION : CONTAINER AND MULTI-PURPOSE BERTH	TITLE : CROSS SECTIONS (8) (CONTAINER)	OCTOBER/2002
																SCALE : 1:800	DRAWING NO. QW-01-015





LEGEND:  
 ----- EXISTING ELEVATION

	<b>JICA</b> JAPAN INTERNATIONAL COOPERATION AGENCY (JICA)	<b>CEPA</b> COMISION EJECUTIVA PORTUARIA AUTONOMA (CEPA)	<b>NKK</b> NIPPON KOEI CO., LTD.	DESIGNED BY : CHECKED BY : APPROVED BY :	SECTION : QUAYWALL WORK SUB-SECTION : CONTAINER AND MULTI-PURPOSE BERTH TITLE : <b>CROSS SECTIONS (10)</b> (CONTAINER)	DATE : OCTOBER/2002 SCALE : 1:800 DRAWING NO: QW-01-017
REV. NO.	DATE	COORDINATE	BY	APPROVED	DATE	



LEGEND:  
 ----- EXISTING ELEVATION

REV. NO.	DATE	COORDINATE	BY	APPROVED	DATE



JAPAN INTERNATIONAL COOPERATION AGENCY (JICA)



COMISION EJECUTIVA PORTUARIA AUTONOMA (CEPA)



THE DETAILED DESIGN ON PORT REACTIVATION PROJECT IN LA UNION PROVINCE OF THE REPUBLIC OF EL SALVADOR

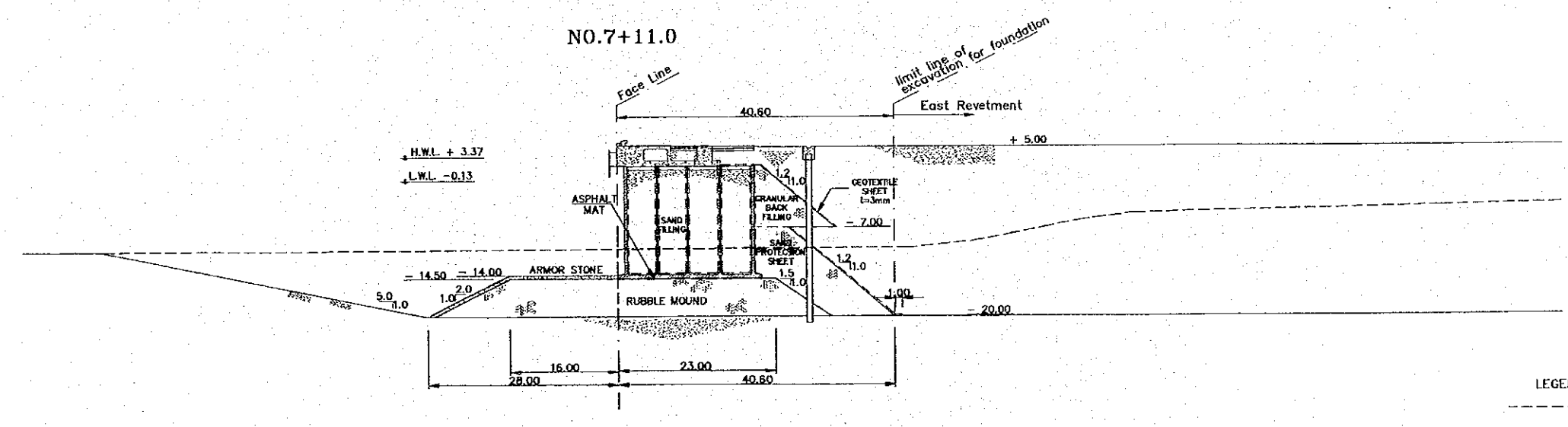
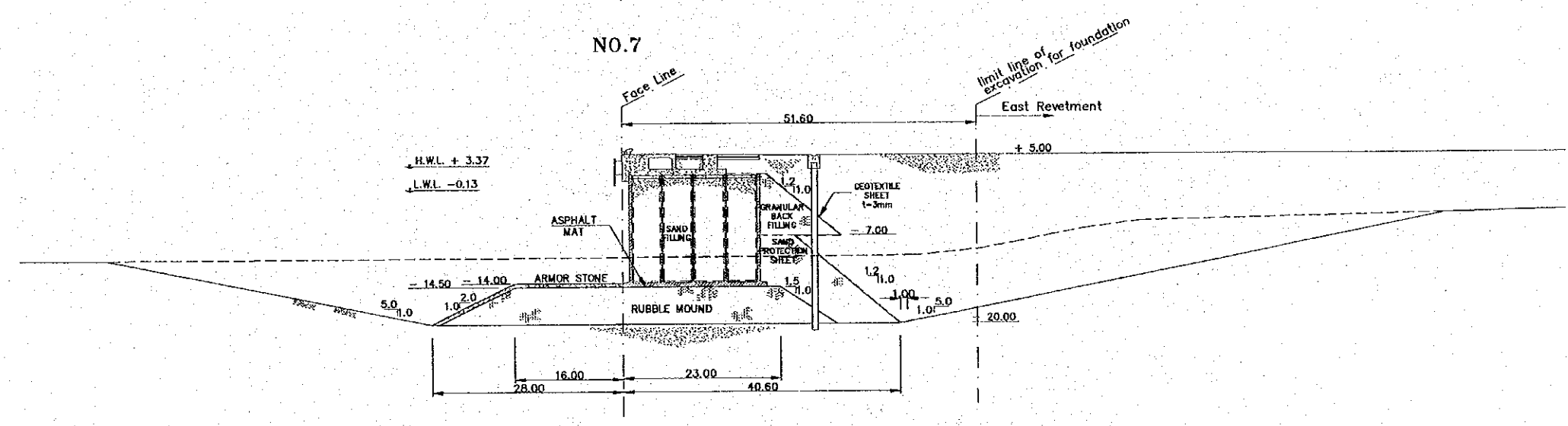
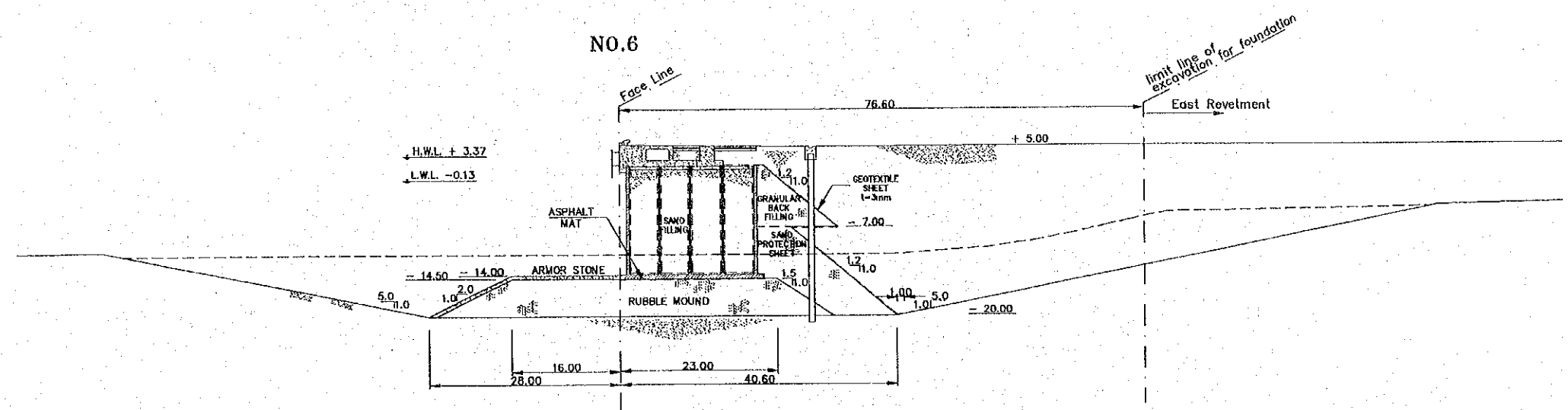
NIPPON KOEI CO., LTD.

DESIGNED BY:  
 CHECKED BY:  
 APPROVED BY:

SECTION : QUAYWALL WORK  
 SUB-SECTION : CONTAINER AND MULTI-PURPOSE BERTH  
 TITLE : CROSS SECTIONS (1) (MULTI-PURPOSE BERTH)

DATE : OCTOBER/2002  
 SCALE : 1:800  
 DRAWING NO. : QW-01-018





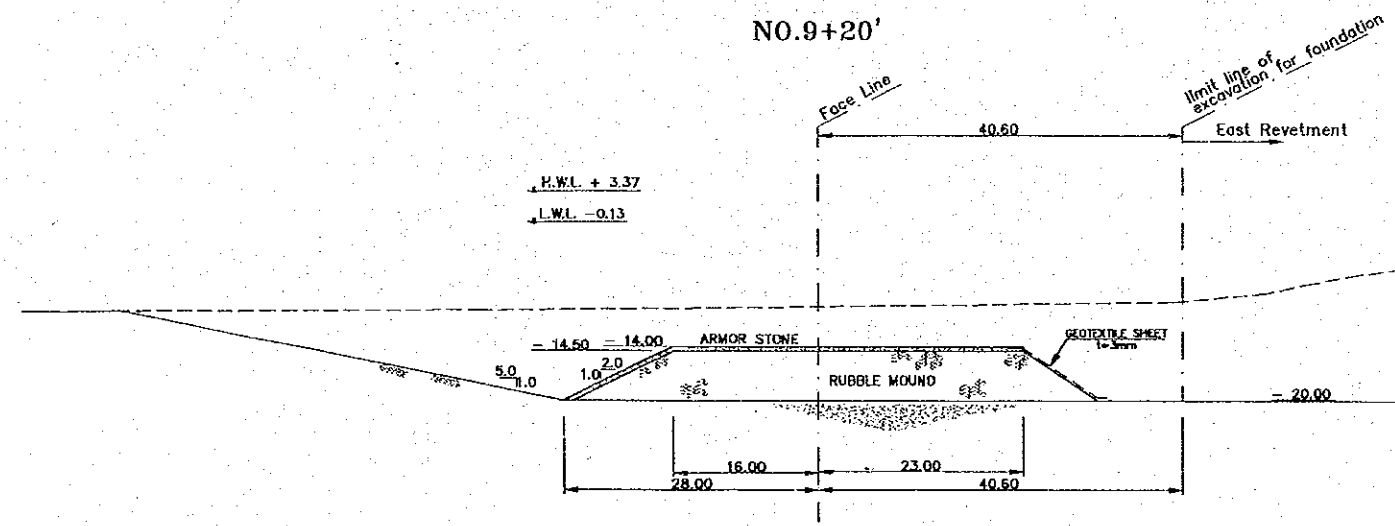
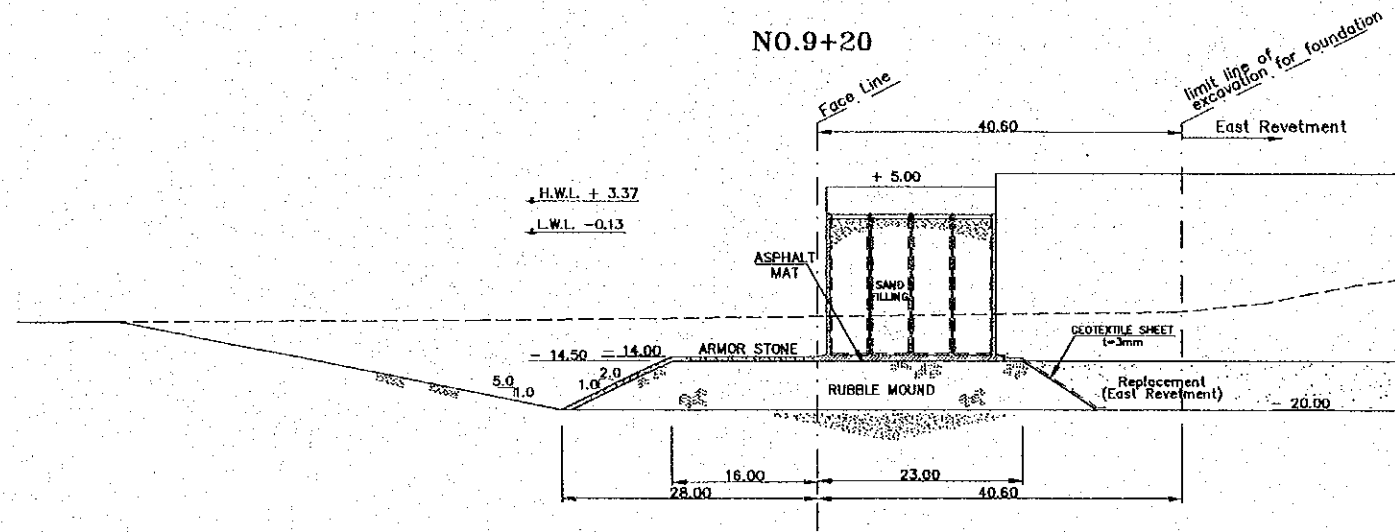
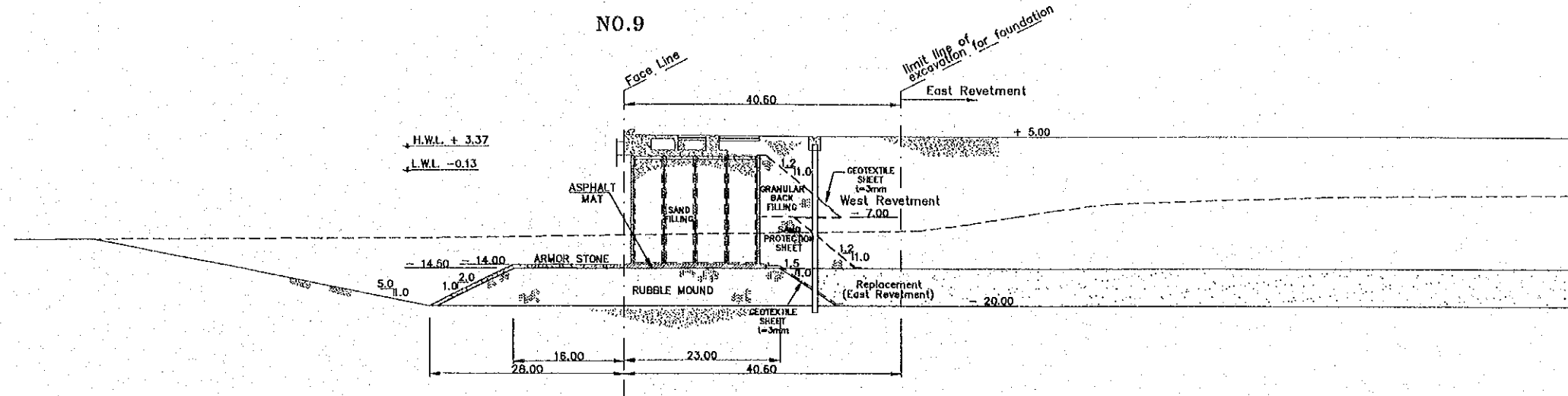
LEGEND:  
 ----- EXISTING ELEVATION

REV. NO.	DATE	COORDINATE	BY	APPROVED	DATE	JAPAN INTERNATIONAL COOPERATION AGENCY (JICA) COMISION EJECUTIVA PORTUARIA AUTONOMA (CEPA)	THE DETAILED DESIGN ON PORT REACTIVATION PROJECT IN LA UNION PROVINCE OF THE REPUBLIC OF EL SALVADOR NIPPON KOEI CO., LTD.	DESIGNED BY :	SECTION : QUAYWALL WORK	DATE : OCTOBER/2002
								CHECKED BY :	SUB-SECTION : CONTAINER AND MULTI-PURPOSE BERTH	SCALE : 1:800
								APPROVED BY :	TITLE : CROSS SECTIONS (3) (MULTI-PURPOSE BERTH)	DRAWING NO: QW-01-020









LEGEND:  
 ----- EXISTING ELEVATION

REV. NO.		DATE		COORDINATE		BY		APPROVED		DATE		JICA JAPAN INTERNATIONAL COOPERATION AGENCY (JICA) COMISION EJECUTIVA PORTUARIA AUTONOMA (CEPA)	THE DETAILED DESIGN ON PORT REACTIVATION PROJECT IN LA UNION PROVINCE OF THE REPUBLIC OF EL SALVADOR NIPPON KOEI CO., LTD.	DESIGNED BY :	SECTION :	DATE :
										SUB-SECTION : TITLE :	QUAYWALL WORK CONTAINER AND MULTI-PURPOSE BERTH CROSS SECTIONS (6) (MULTI-PURPOSE BERTH)			OCTOBER/2002		
										APPROVED BY :	SCALE : DRAWING NO.:			1:800 QW-01-023		

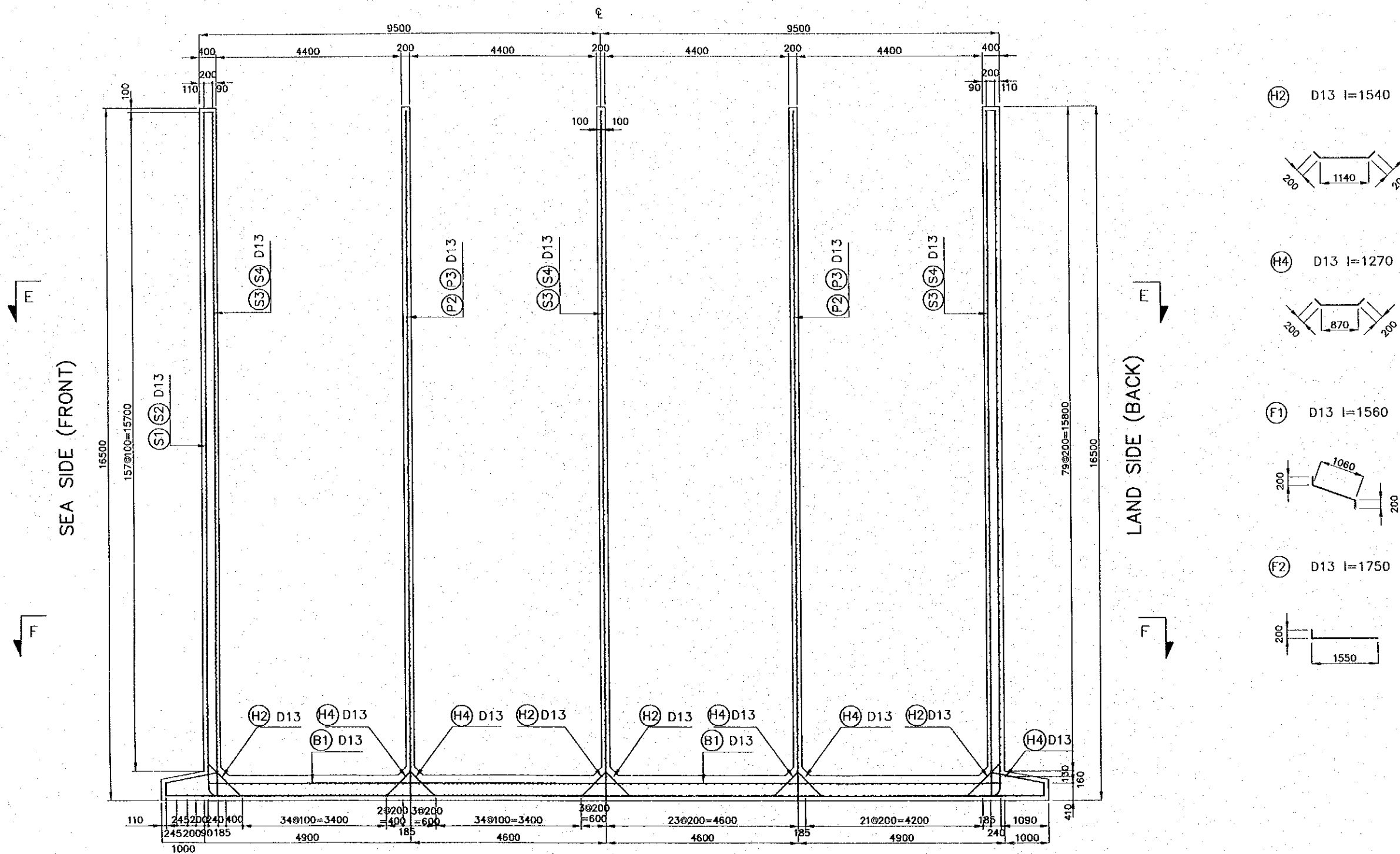




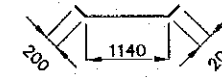
REINFORCEMENT OF CAISSON (1)

A-A Sect.

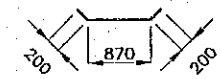
B-B Sect.



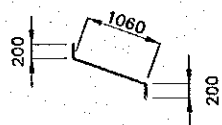
(H2) D13 l=1540



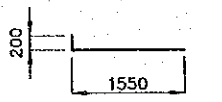
(H4) D13 l=1270



(F1) D13 l=1560



(F2) D13 l=1750

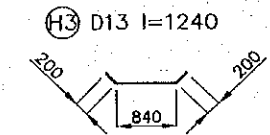
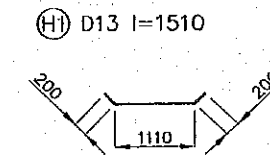
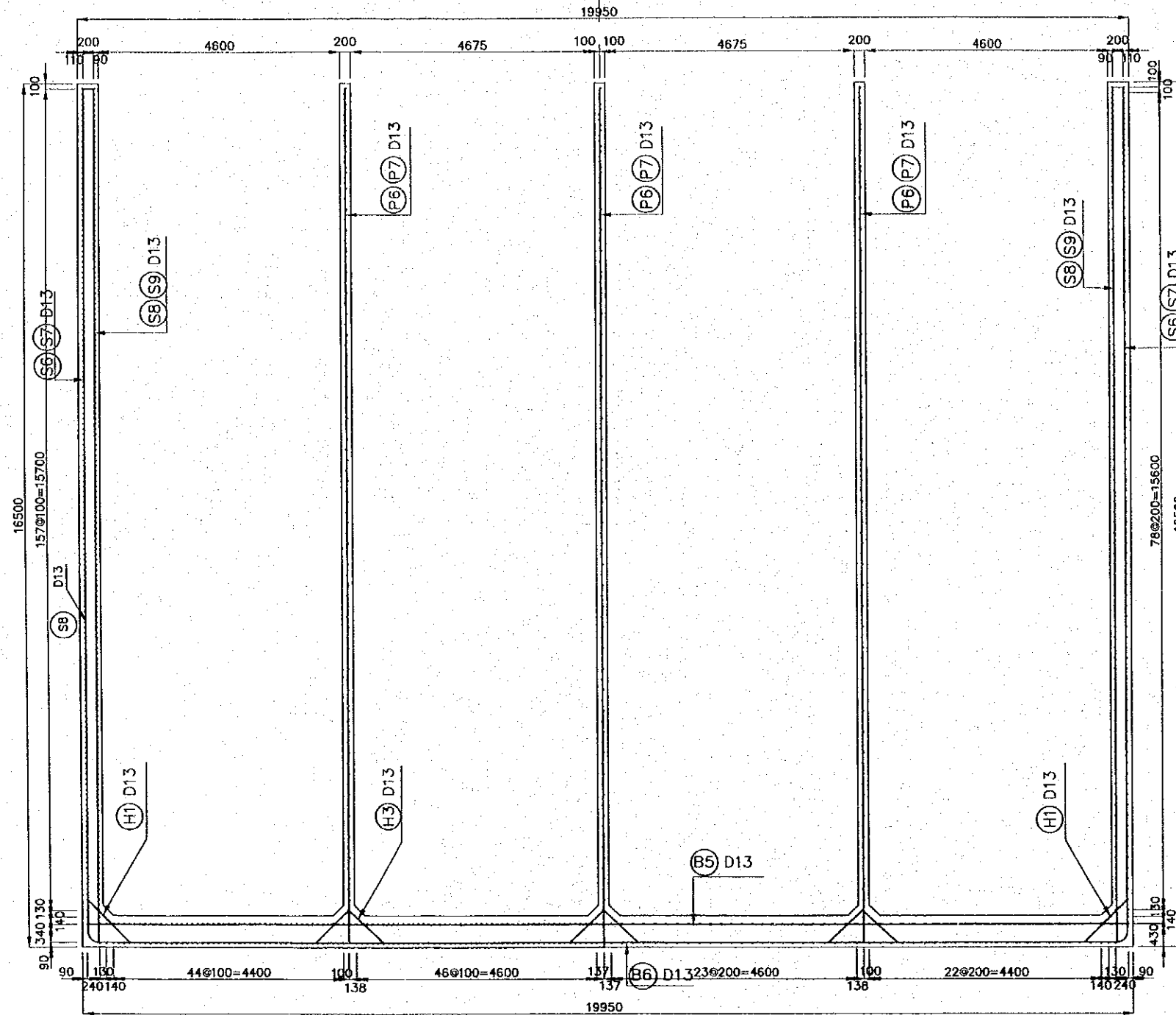


JAPAN INTERNATIONAL COOPERATION AGENCY (JICA)		THE DETAILED DESIGN ON PORT REACTIVATION PROJECT IN LA UNION PROVINCE OF THE REPUBLIC OF EL SALVADOR		DESIGNED BY : CHECKED BY : APPROVED BY :	SECTION : QUAYWALL WORK SUB-SECTION : CONTAINER AND MULTI-PURPOSE BERTH TITLE : REINFORCEMENT OF CAISSON (1)	DATE : OCTOBER/2002 SCALE : 1 : 100 DRAWING NO. : QW-01-026
COMISION EJECUTIVA PORTUARIA AUTONOMA (CEPA)		NIPPON KOEI CO., LTD				
REV. NO.	DATE	COORDINATE	BY	APPROVED	DATE	

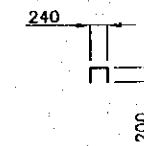
# REINFORCEMENT OF CAISSON (2)

C-C Sect.

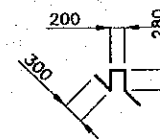
D-D Sect.



ERECTION BAR FOR WALL



ERECTION BAR FOR BOTTOM SLAB



REV. NO.	DATE	COORDINATE	BY	APPROVED	DATE

**JICA**  
**JAPAN INTERNATIONAL COOPERATION AGENCY (JICA)**  
**COMISION EJECUTIVA PORTUARIA AUTONOMA (CEPA)**

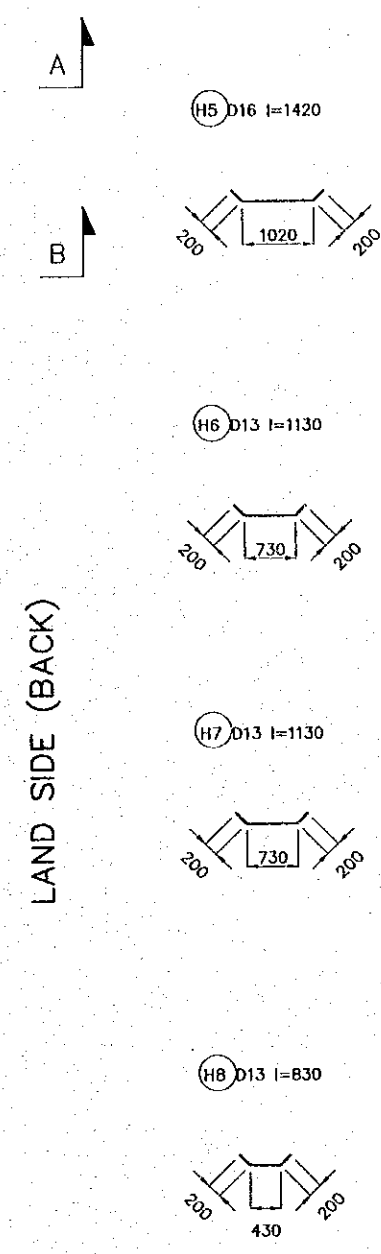
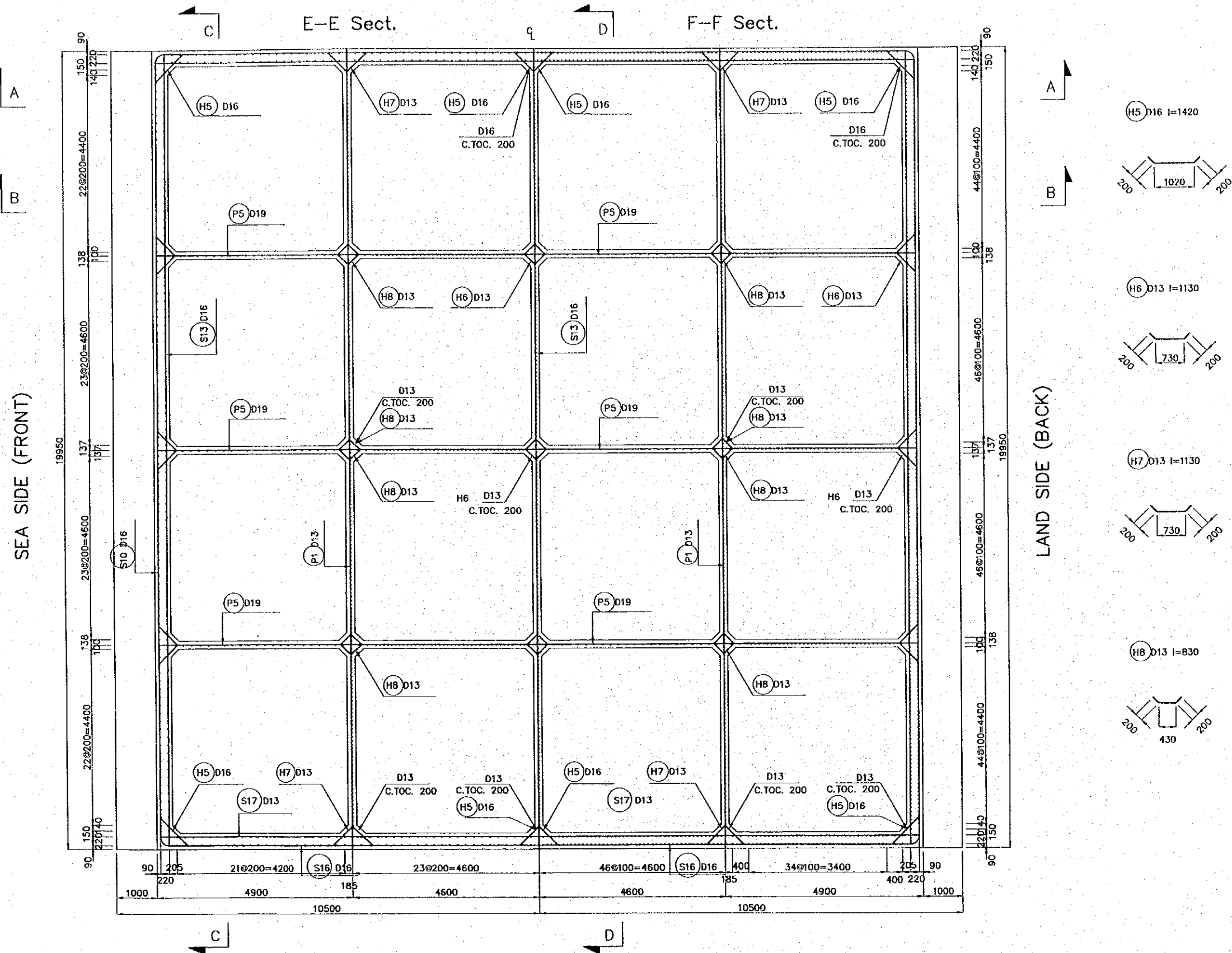
THE DETAILED DESIGN  
 ON PORT REACTIVATION PROJECT  
 IN LA UNION PROVINCE  
 OF THE REPUBLIC OF EL SALVADOR  
**NIPPON KOEI CO., LTD**

DESIGNED BY :  
 CHECKED BY :  
 APPROVED BY :

SECTION : QUAYWALL WORK  
 SUB-SECTION : CONTAINER AND MULTI-PURPOSE BERTH  
 TITLE : REINFORCEMENT OF CAISSON (2)

DATE : OCTOBER/2002  
 SCALE : 1 : 100  
 DRAWING NO. : QW-01-027

REINFORCEMENT OF CAISSON (3)



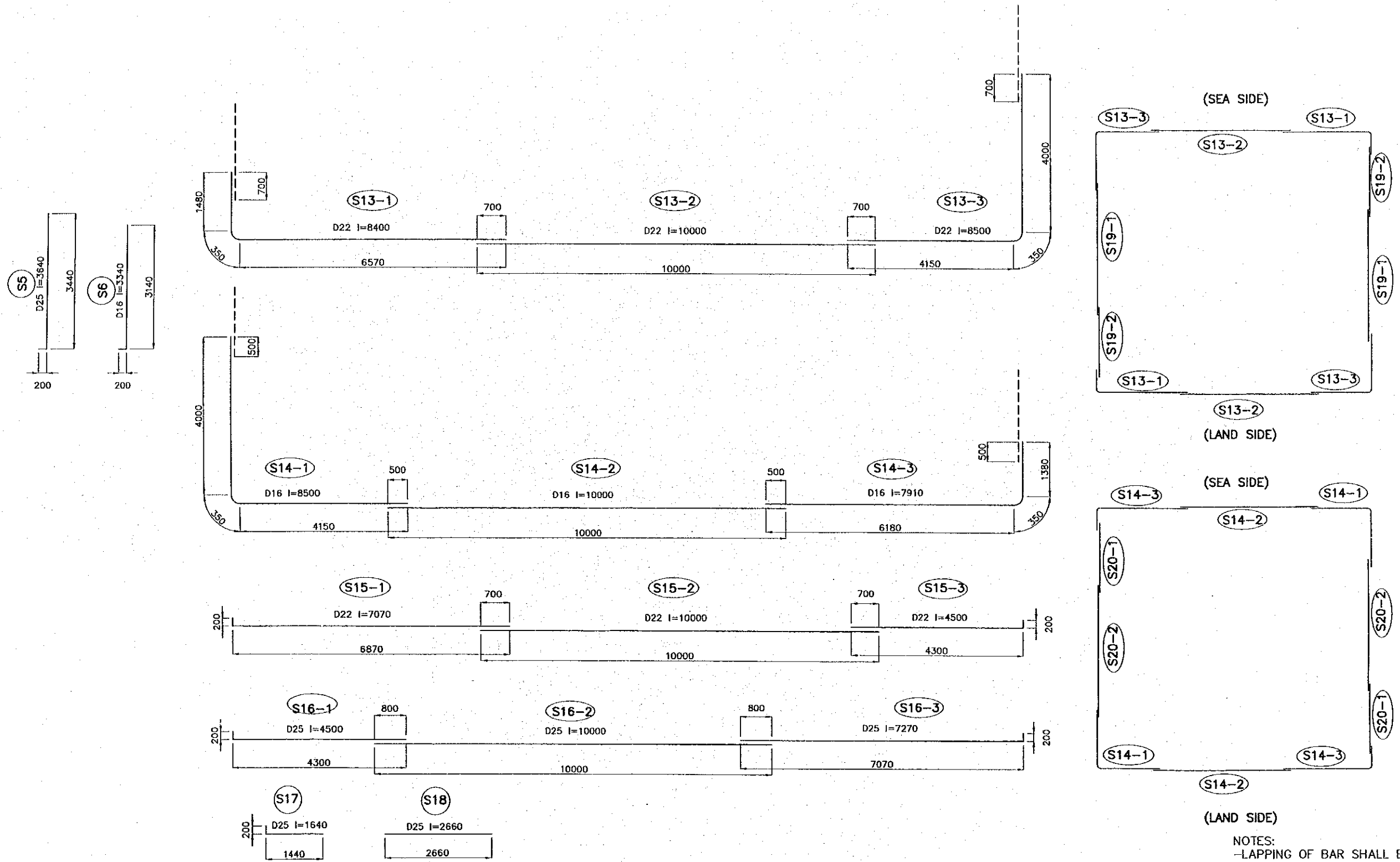
REV. NO.	DATE	COORDINATE	BY	APPROVED	DATE	JICA JAPAN INTERNATIONAL COOPERATION AGENCY (JICA)	COMISION EJECUTIVA PORTUARIA AUTONOMA (CEPA)	THE DETAILED DESIGN ON PORT REACTIVATION PROJECT IN LA UNION PROVINCE OF THE REPUBLIC OF EL SALVADOR NIPPON KOEI CO., LTD	DESIGNED BY :	SECTION : QUAYWALL WORK	DATE : OCTOBER/2002
									CHECKED BY :	SUB-SECTION : CONTAINER AND MULTI-PURPOSE BERTH	SCALE : 1 : 100
									TITLE : REINFORCEMENT OF CAISSON (3)	DRAWING NO. : QW-01-028	







# REINFORCEMENT OF CAISSON (6) (FRONT AND BACK WALL)



NOTES:  
 -LAPPING OF BAR SHALL BE MORE THAN 30 TIMES OF LARGER DIAMETER  
 -BAR BENDING SCHEDULE IS REFERENCE ONLY

	 JAPAN INTERNATIONAL COOPERATION AGENCY (JICA)	THE DETAILED DESIGN ON PORT REACTIVATION PROJECT IN LA UNION PROVINCE OF THE REPUBLIC OF EL SALVADOR  NIPPON KOEI CO., LTD.	DESIGNED BY : CHECKED BY : APPROVED BY :	SECTION : QUAYWALL WORK SUB-SECTION : CONTAINER AND MULTI-PURPOSE BERTH TITLE : REINFORCEMENT OF CAISSON (6)	DATE : OCTOBER/2002 SCALE : 1 : 100 DRAWING NO. : QW-01-031
REV. NO.	DATE	COORDINATE	BY	APPROVED	DATE