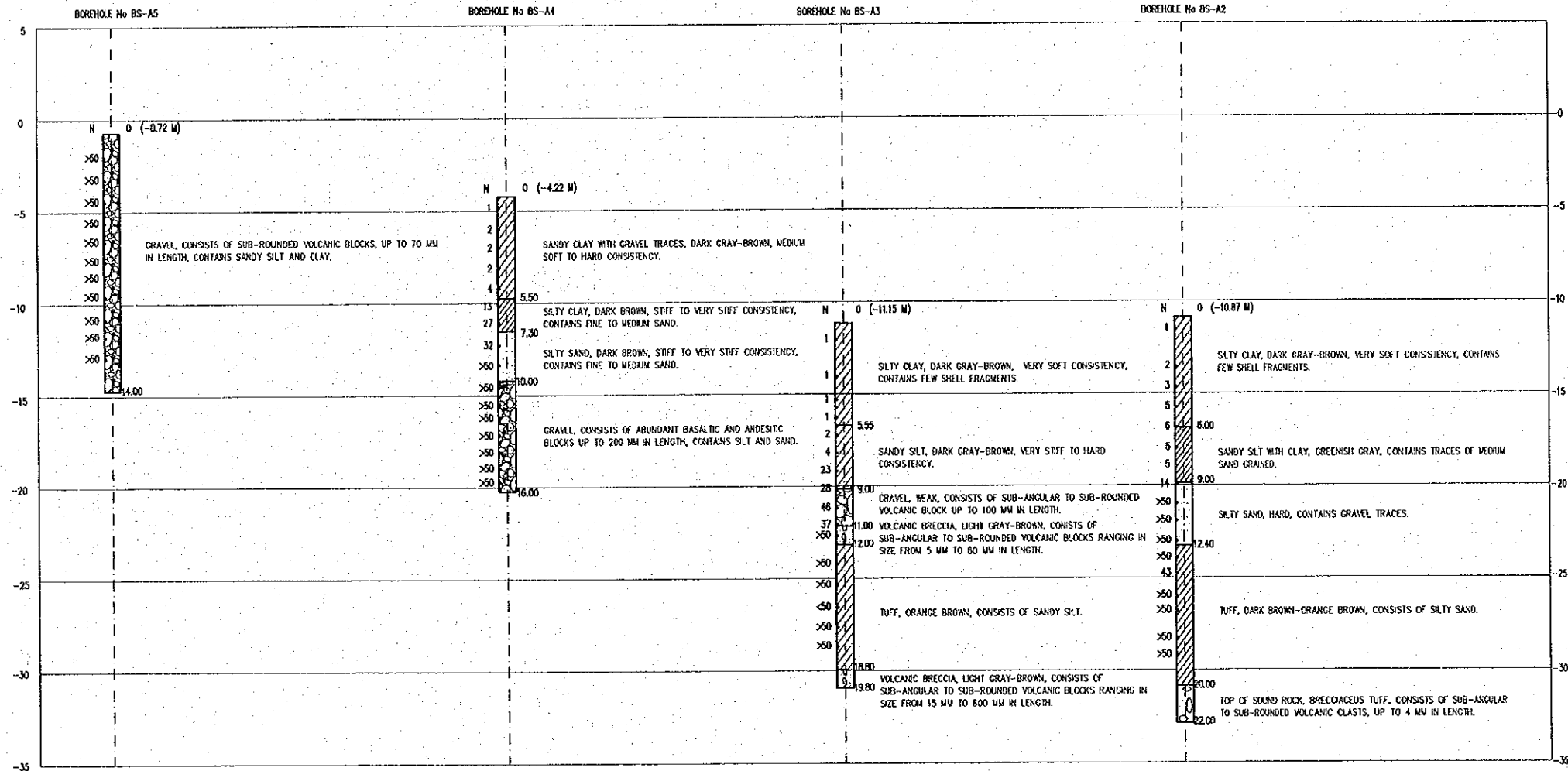


SECTION A - A

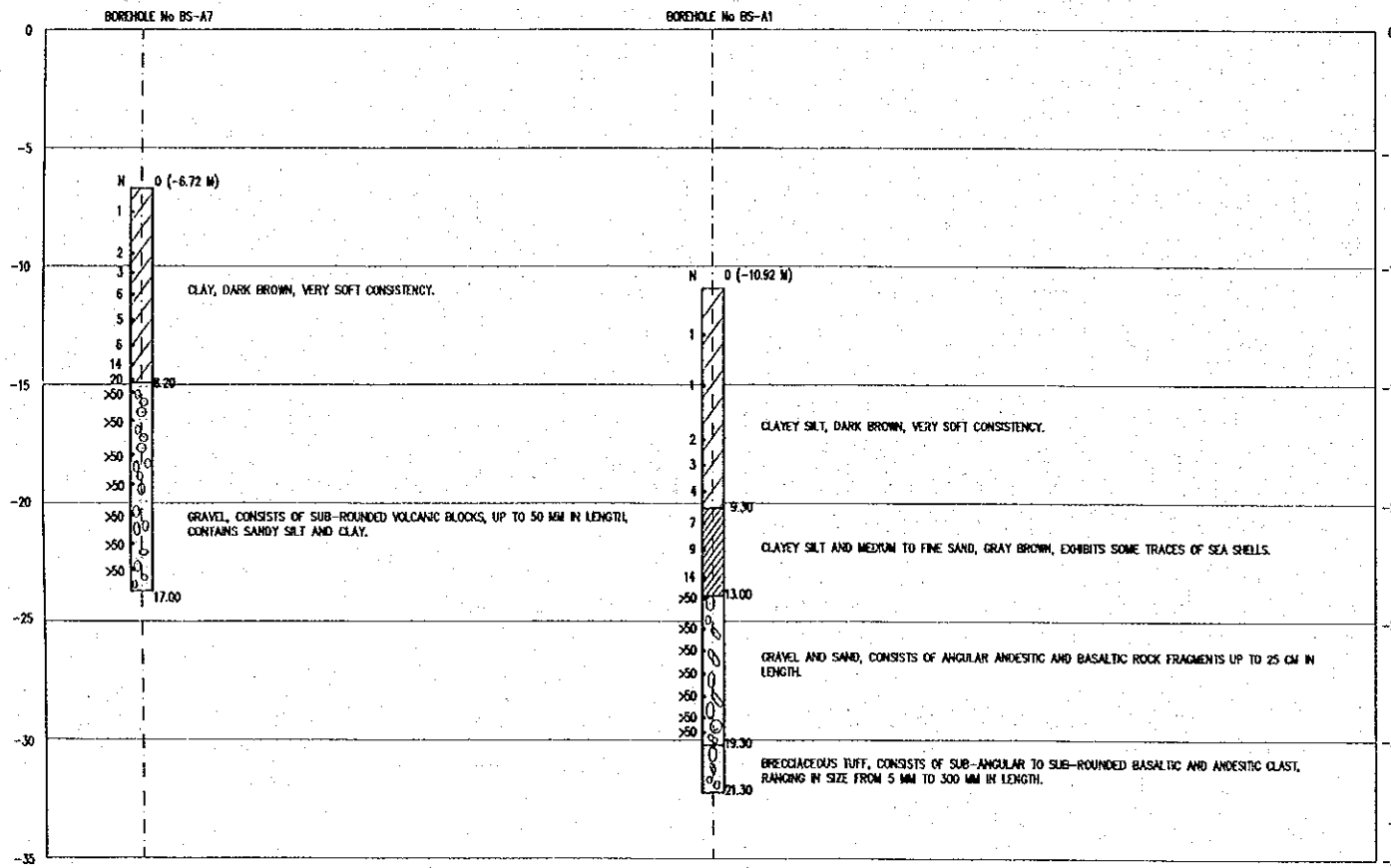


NOTES:

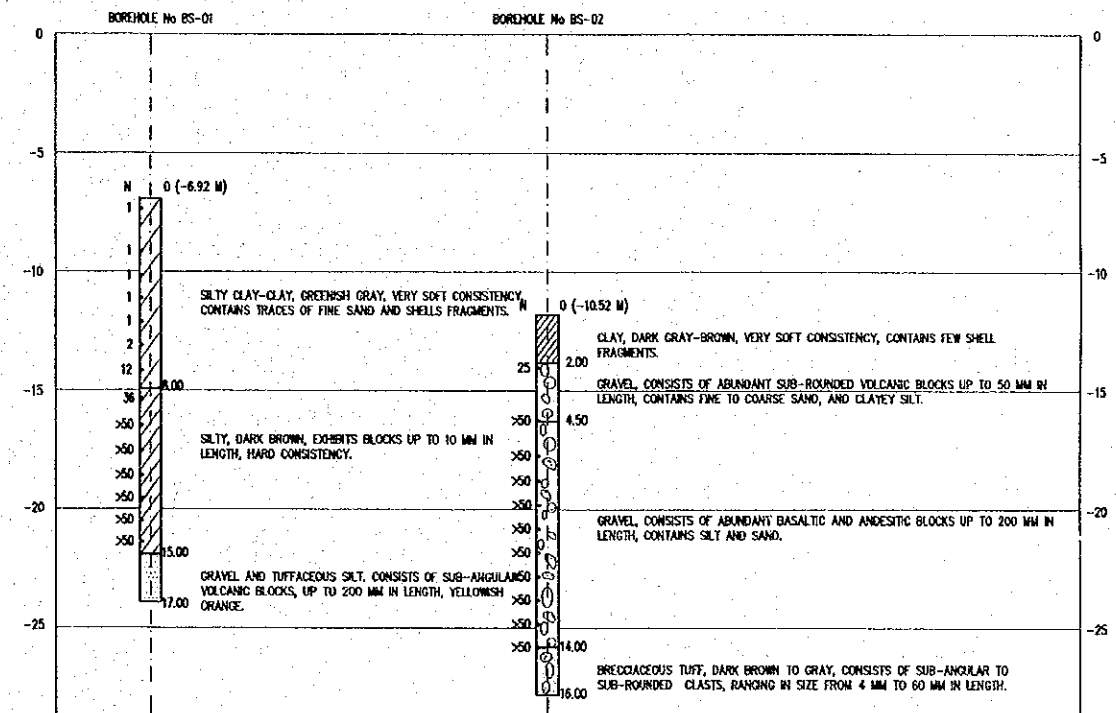
-DEPTHS ARE REFERRED TO CUL
 -ALL INFORMATION ON THIS SHEET IS ONLY FOR REFERENCE

REV. NO.	DATE	COORDINATE	BY	APPROVED	DATE	JAPAN INTERNATIONAL COOPERATION AGENCY (JICA) COMISION EJECUTIVA PORTUARIA AUTONOMA (CEPA)	THE DETAILED DESIGN ON PORT REACTIVATION PROJECT IN LA UNION PROVINCE OF THE REPUBLIC OF EL SALVADOR NIPPON KOEI CO., LTD.	DESIGNED BY :	SECTION : SITE INFORMATION	DATE : OCTOBER/2002
					CHECKED BY :			SUB-SECTION : GEOLOGICAL INFORMATION	SCALE : H. 1:2,500 V. 1:300	
					APPROVED BY :			TITLE : GEOLOGICAL SECTION (A)	DRAWING NO. : SI-02-002	

SECTION B - B



SECTION C - C

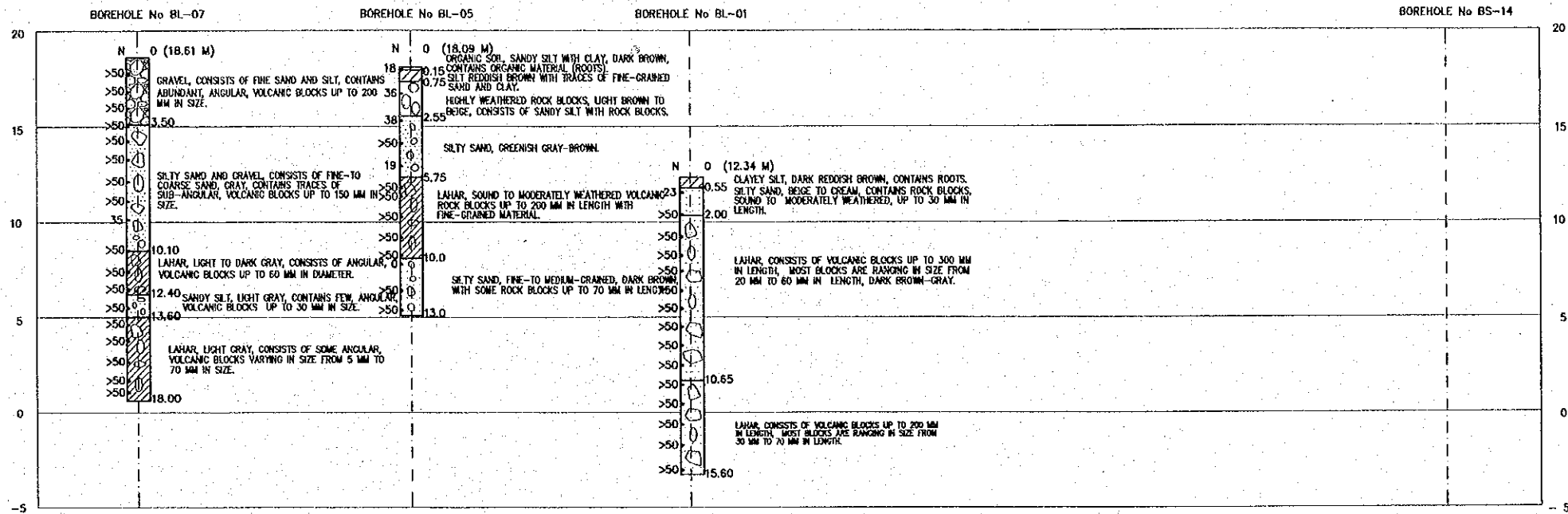


NOTES:

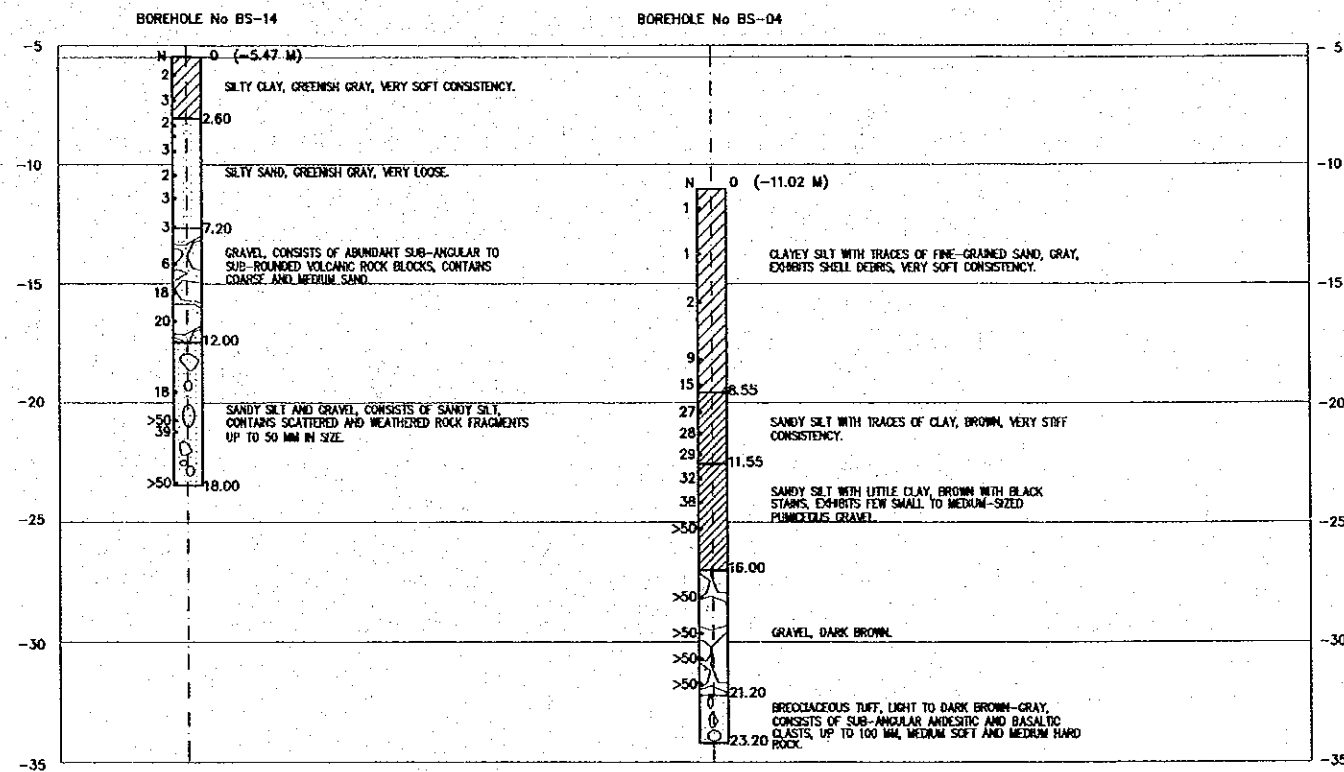
- DEPTHS ARE REFERRED TO CDL
- ALL INFORMATION ON THIS SHEET IS ONLY FOR REFERENCE

REV. NO.		DATE	COORDINATE	BY	APPROVED	DATE	JAPAN INTERNATIONAL COOPERATION AGENCY (JICA) COMISION EJECUTIVA PORTUARIA AUTONOMA (CEPA)	THE DETAILED DESIGN ON PORT REACTIVATION PROJECT IN LA UNION PROVINCE OF THE REPUBLIC OF EL SALVADOR NIPPON KOEI CO., LTD.	DESIGNED BY :	SECTION : SITE INFORMATION	DATE : OCTOBER/2002
									CHECKED BY :	SUB-SECTION : GEOLOGICAL INFORMATION	SCALE : H. 1:2,500 V. 1:300
								APPROVED BY :	TITLE : GEOLOGICAL SECTIONS (B-C)	DRAWING NO. : SI-02-003	

SECTION D - D



SECTION D - D

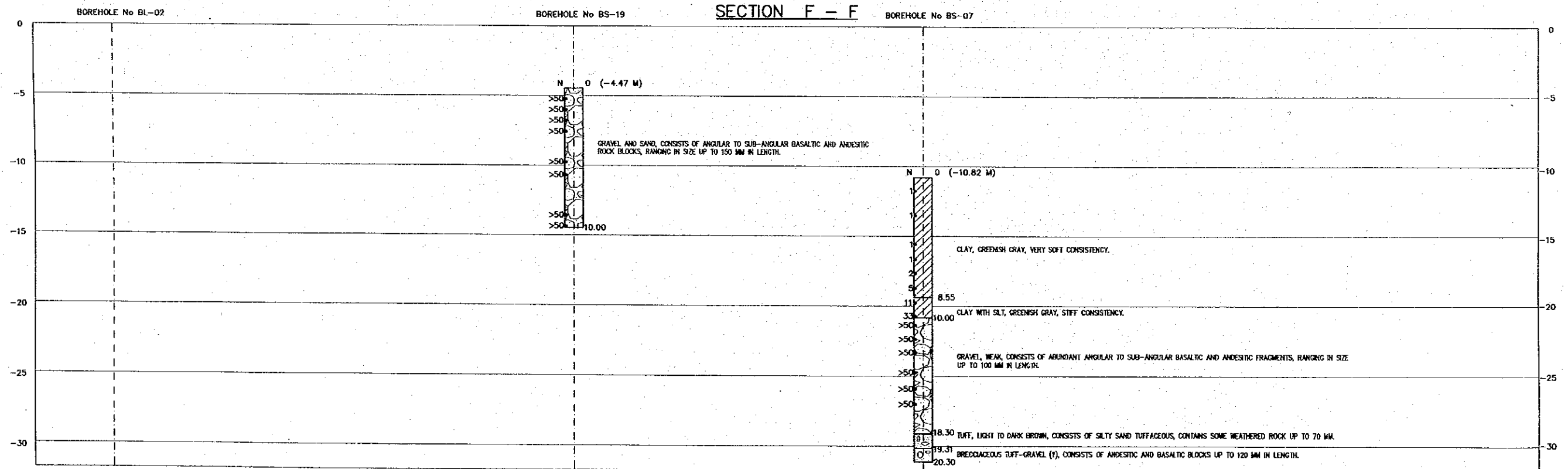
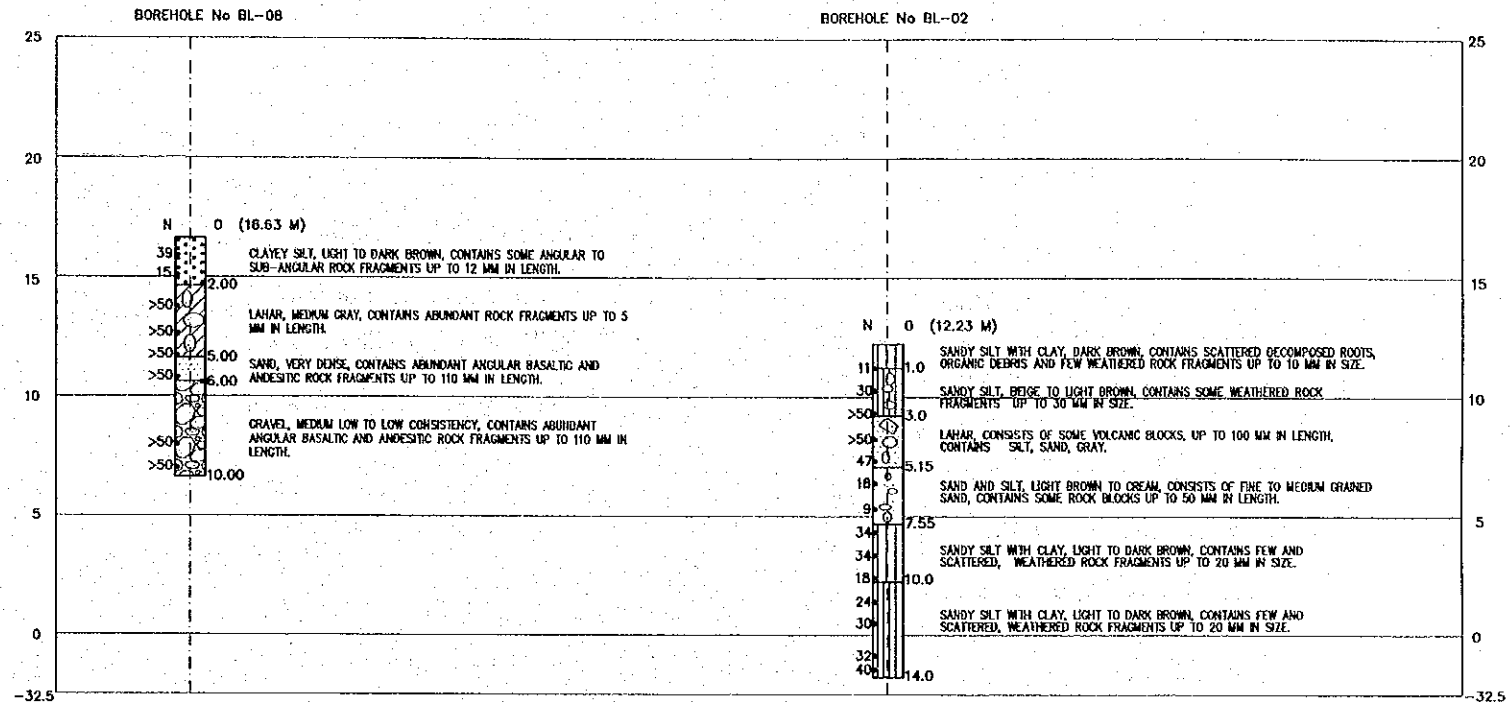
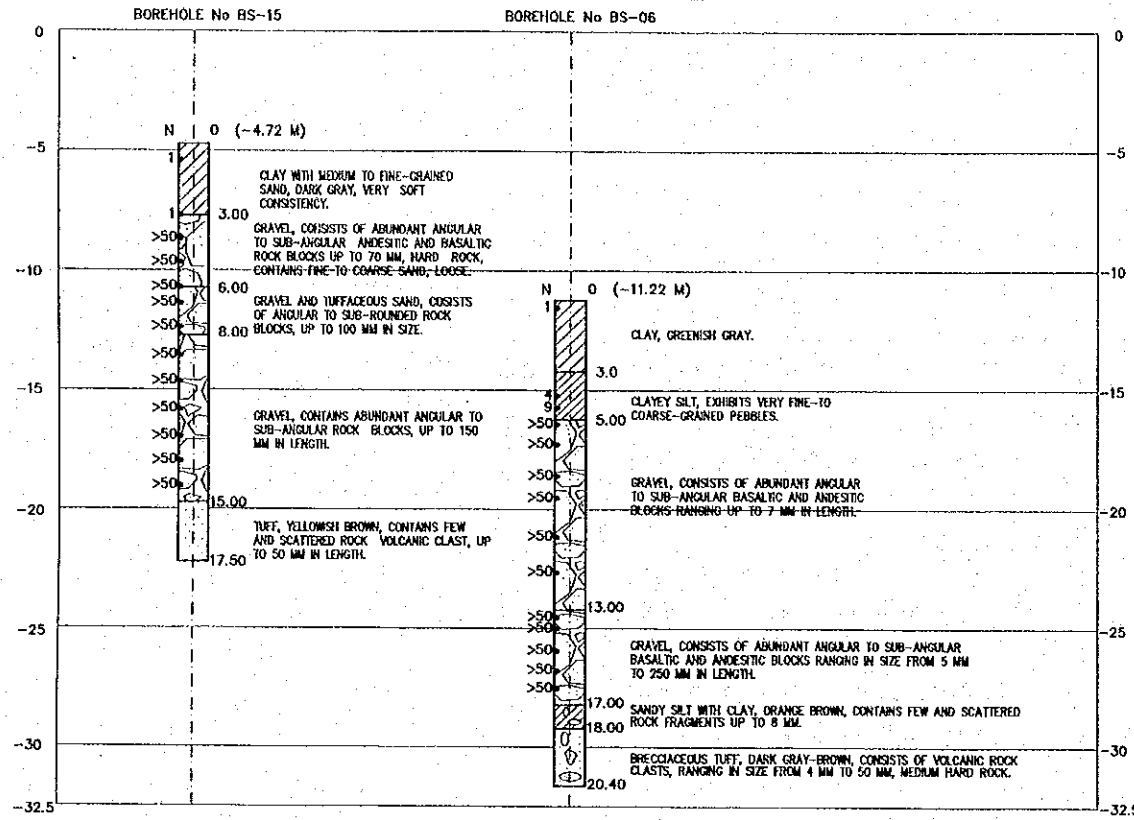


NOTES:
 -DEPTHS ARE REFERRED TO CDL
 -ALL INFORMATION ON THIS SHEET IS ONLY FOR REFERENCE

REV. NO.	DATE	COORDINATE	BY	APPROVED	DATE	JAPAN INTERNATIONAL COOPERATION AGENCY (JICA) COMISION EJECUTIVA PORTUARIA AUTONOMA (CEPA)	THE DETAILED DESIGN ON PORT REACTIVATION PROJECT IN LA UNION PROVINCE OF THE REPUBLIC OF EL SALVADOR NIPPON KOEI CO., LTD.	DESIGNED BY :	SECTION : SITE INFORMATION	DATE : OCTOBER/2002
								CHECKED BY :	SUB-SECTION : GEOLOGICAL INFORMATION	SCALE : H. 1:2,500 V. 1:300
								APPROVED BY :	TITLE : GEOLOGICAL SECTION (D)	DRAWING NO. : SI-02-004

SECTION E - E

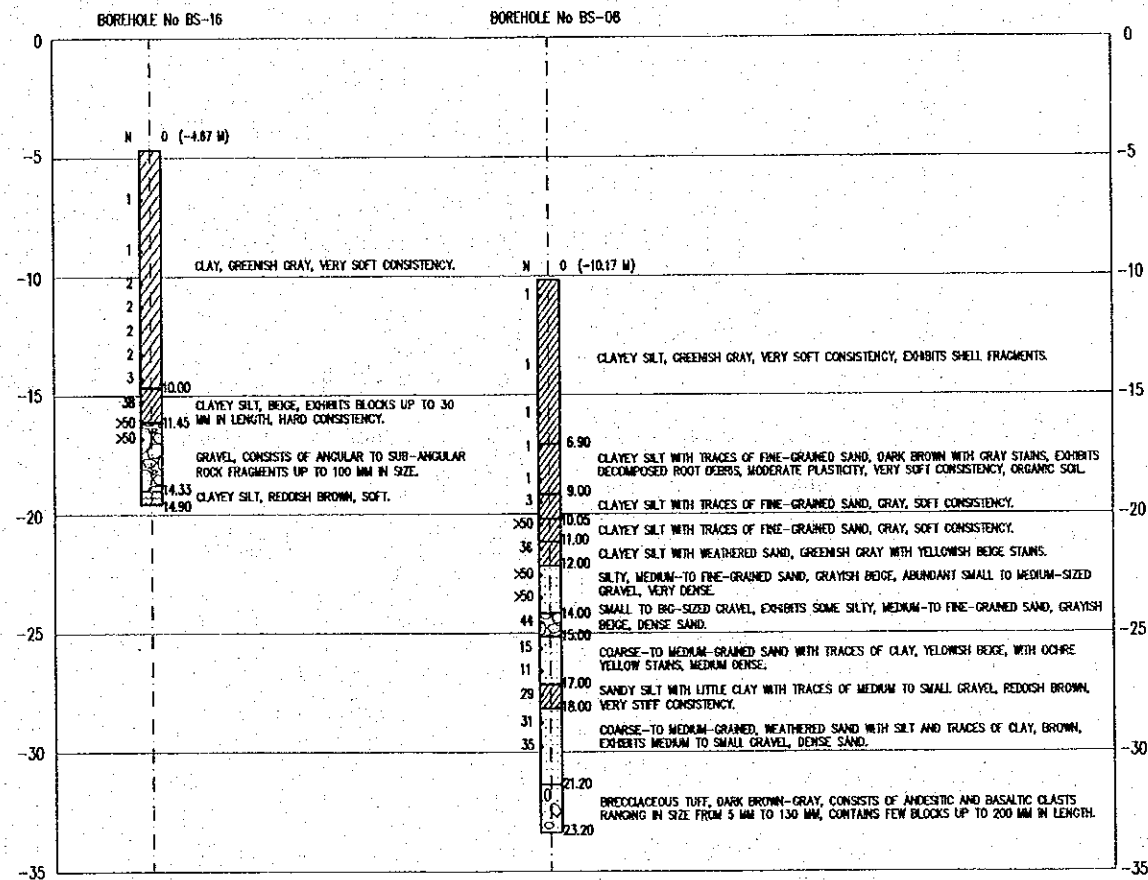
SECTION F - F



NOTES:
 -DEPTHS ARE REFERRED TO CDL
 -ALL INFORMATION ON THIS SHEET IS ONLY FOR REFERENCE

REV. NO.	DATE	COORDINATE	BY	APPROVED	DATE	JAPAN INTERNATIONAL COOPERATION AGENCY (JICA) COMISION EJECUTIVA PORTUARIA AUTONOMA (CEPA)	THE DETAILED DESIGN ON PORT REACTIVATION PROJECT IN LA UNION PROVINCE OF THE REPUBLIC OF EL SALVADOR NIPPON KOEI CO., LTD.	DESIGNED BY :	SECTION :	DATE :
								CHECKED BY :	SUB-SECTION :	OCTOBER/2002
								APPROVED BY :	TITLE :	SCALE :
									GEOLOGICAL SECTIONS (E-F)	H. 1:2,500 V. 1:300
										DRAWING NO. : SI-02-005

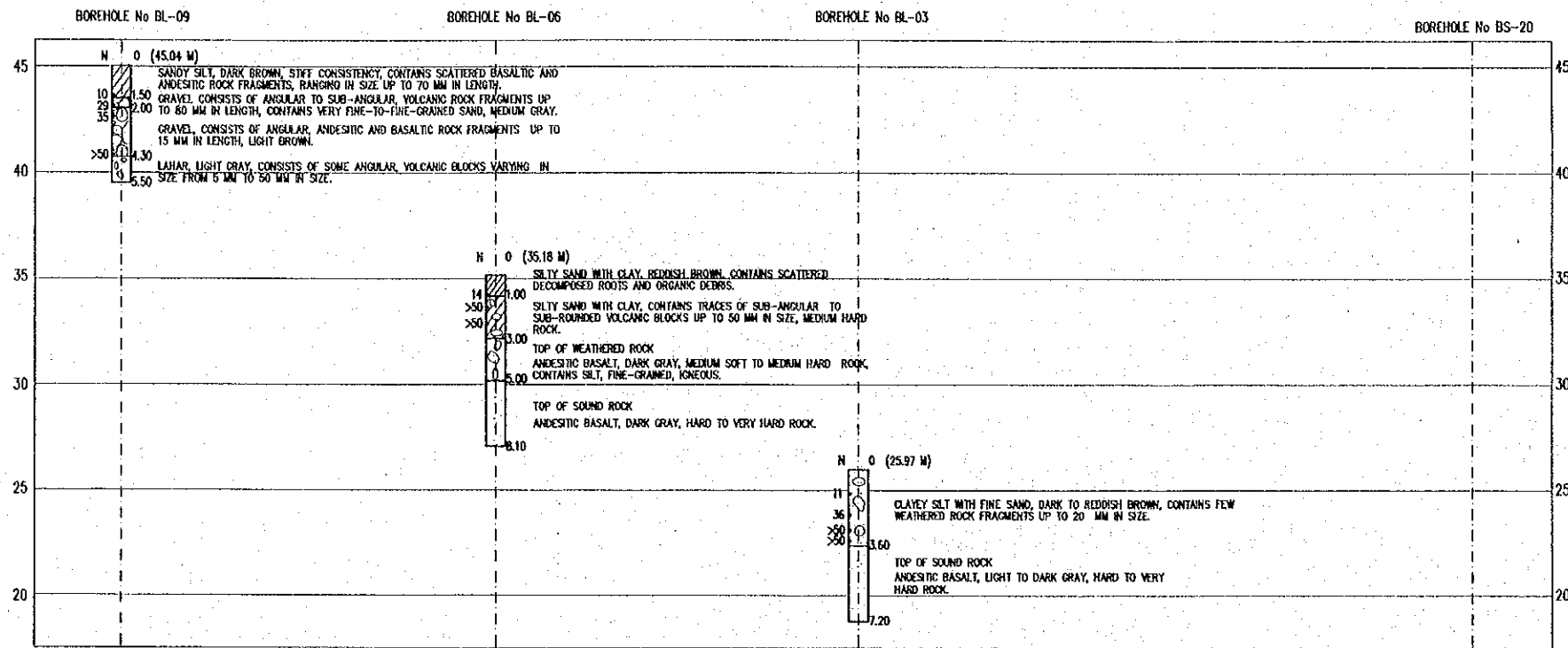
SECTION G - G



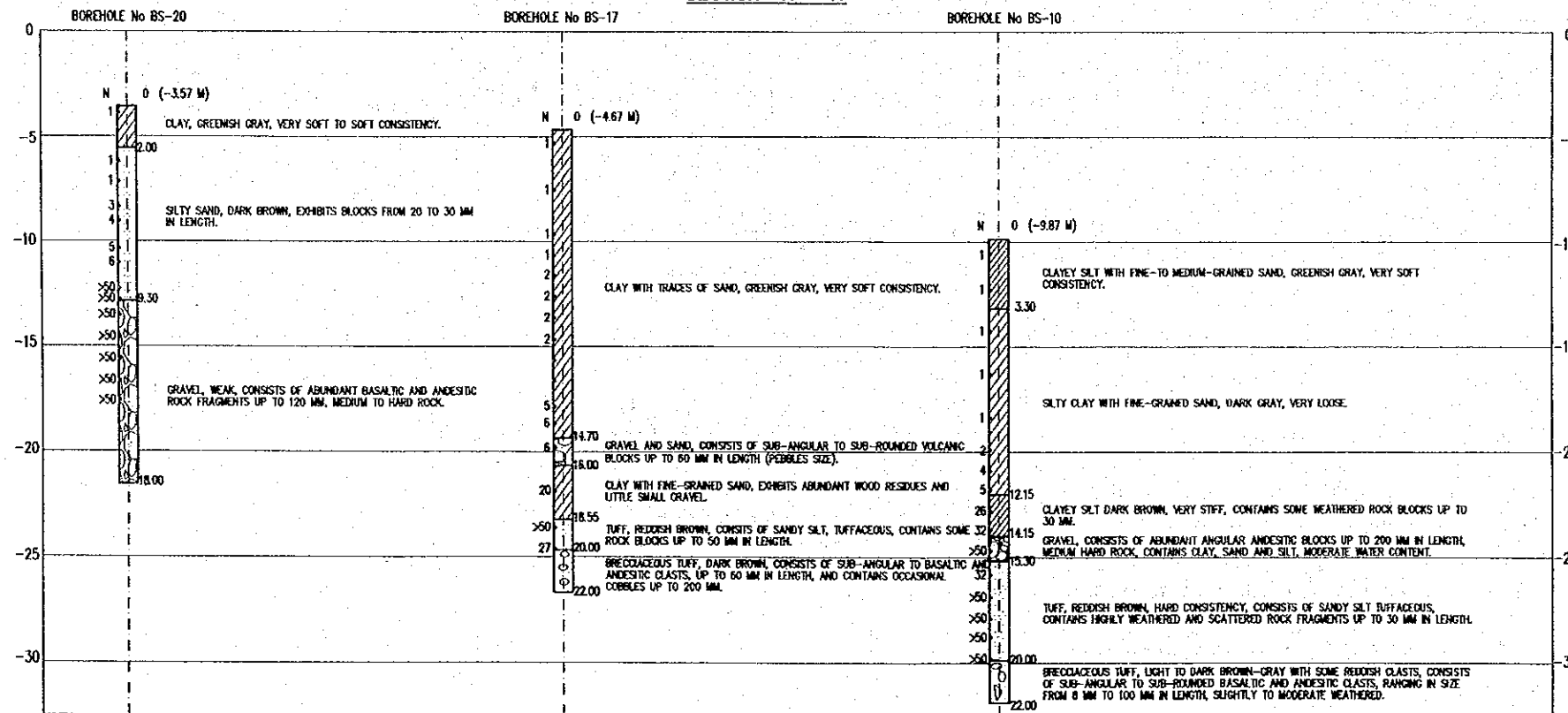
NOTES:
 -DEPTHS ARE REFERRED TO CDL
 -ALL INFORMATION ON THIS SHEET IS ONLY FOR REFERENCE

JAPAN INTERNATIONAL COOPERATION AGENCY (JICA)			THE DETAILED DESIGN ON PORT REACTIVATION PROJECT IN LA UNION PROVINCE OF THE REPUBLIC OF EL SALVADOR			DESIGNED BY : CHECKED BY : APPROVED BY :	SECTION : SITE INFORMATION SUB-SECTION : GEOLOGICAL INFORMATION TITLE : GEOLOGICAL SECTION (G)	DATE : OCTOBER/2002 SCALE : H. 1:2,500 V. 1:300 DRAWING NO. : SI-02-006
COMISION EJECUTIVA PORTUARIA AUTONOMA (CEPA)			NIPPON KOEI CO., LTD.					
REV. NO.	DATE	COORDINATE	BY	APPROVED	DATE			

SECTION H - H



SECTION H - H

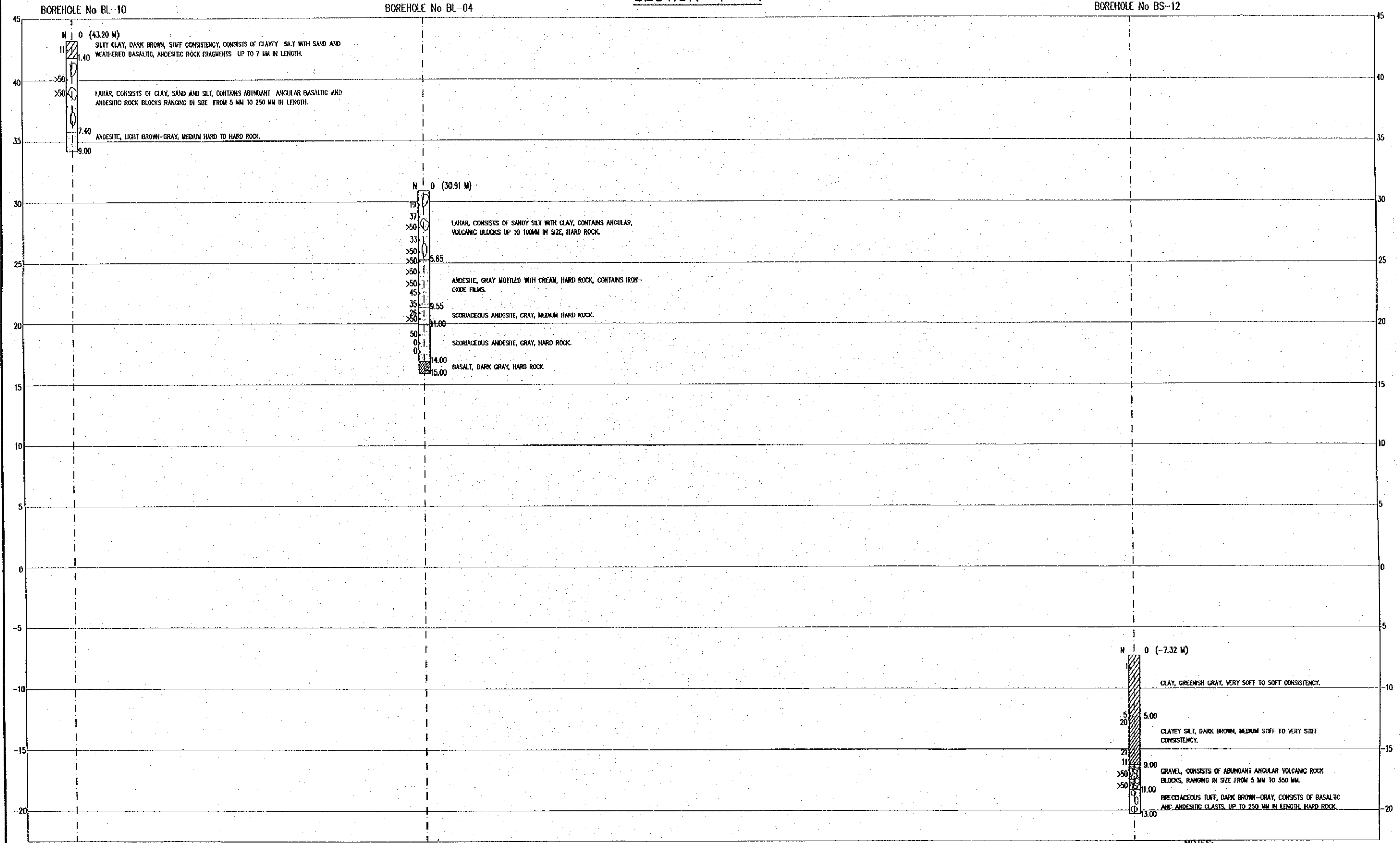


NOTES:

-DEPTHS ARE REFERRED TO CDL
 -ALL INFORMATION ON THIS SHEET IS ONLY FOR REFERENCE

REV. NO.		DATE	COORDINATE	BY	APPROVED	DATE	<p>JICA JAPAN INTERNATIONAL COOPERATION AGENCY (JICA) COMISION EJECUTIVA PORTUARIA AUTONOMA (CEPA)</p>	<p>THE DETAILED DESIGN ON PORT REACTIVATION PROJECT IN LA UNION PROVINCE OF THE REPUBLIC OF EL SALVADOR</p> <p>NIPPON KOEI CO., LTD.</p>	DESIGNED BY :	SECTION : SITE INFORMATION SUB-SECTION : GEOLOGICAL INFORMATION TITLE : GEOLOGICAL SECTION (H)	DATE :
									CHECKED BY :		SCALE :
									APPROVED BY :		DRAWING NO. :
											DATE : OCTOBER/2002 SCALE : H. 1:2,500 V. 1:300 DRAWING NO. : SI-02-007

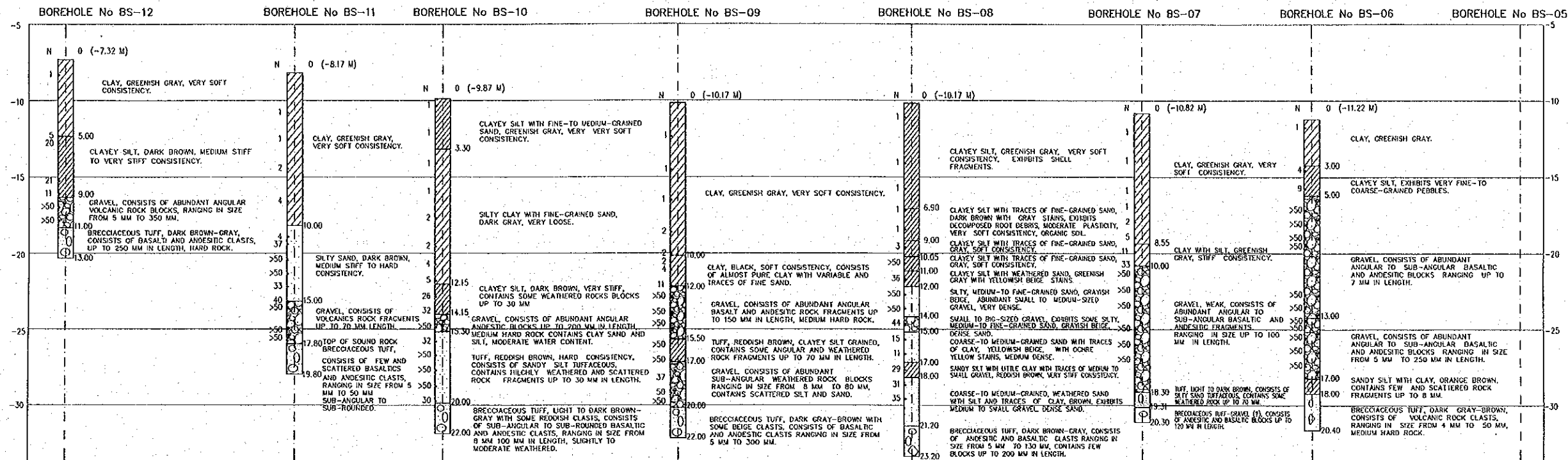
SECTION I - I



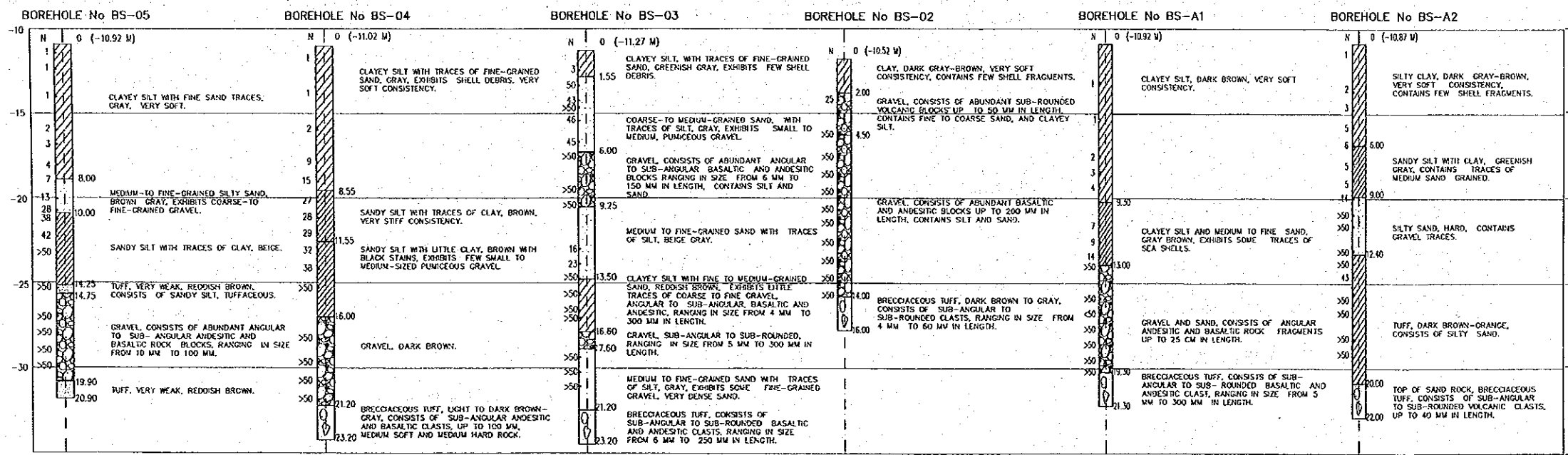
NOTES:
 -DEPTHS ARE REFERRED TO CDL
 -ALL INFORMATION ON THIS SHEET IS ONLY FOR REFERENCE

REV. NO.	DATE	COORDINATE	BY	APPROVED	DATE	JAPAN INTERNATIONAL COOPERATION AGENCY (JICA) COMISION EJECUTIVA PORTUARIA AUTONOMA (CEPA)	THE DETAILED DESIGN ON PORT REACTIVATION PROJECT IN LA UNION PROVINCE OF THE REPUBLIC OF EL SALVADOR NIPPON KOEI CO., LTD.	DESIGNED BY :	SECTION : SITE INFORMATION	DATE : OCTOBER/2002
								CHECKED BY :	SUB-SECTION : GEOLOGICAL INFORMATION	SCALE : H. 1:2,500 V. 1:300
								APPROVED BY :	TITLE : GEOLOGICAL SECTION (I)	DRAWING NO. : SI-02-008

SECTION J - J

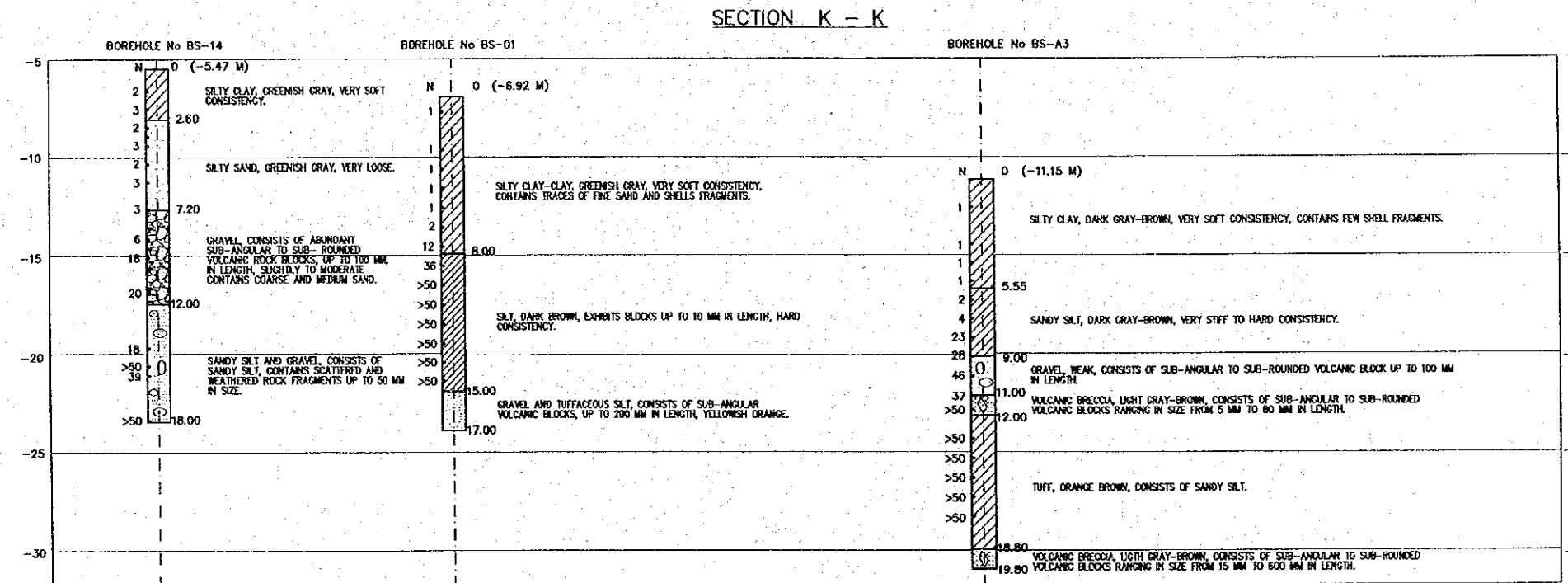
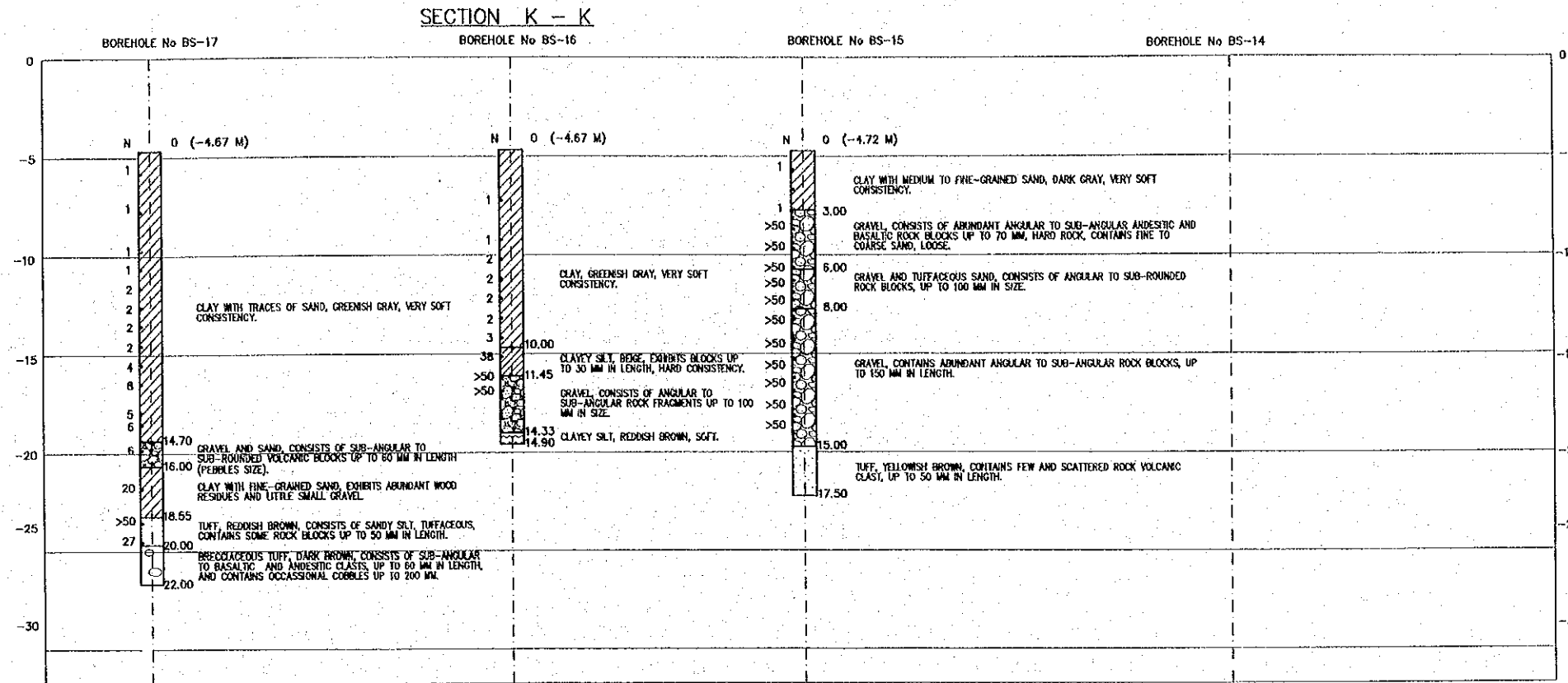


SECTION J - J



NOTES:
 -DEPTHS ARE REFERRED TO CDL
 -ALL INFORMATION ON THIS SHEET IS ONLY FOR REFERENCE

REV. NO.	DATE	COORDINATE	BY	APPROVED	DATE	<p>JAPAN INTERNATIONAL COOPERATION AGENCY (JICA) COMISION EJECUTIVA PORTUARIA AUTONOMA (CEPA)</p>	<p>THE DETAILED DESIGN ON PORT REACTIVATION PROJECT IN LA UNION PROVINCE OF THE REPUBLIC OF EL SALVADOR NIPPON KOEI CO., LTD.</p>	DESIGNED BY :	SECTION :	DATE :
								CHECKED BY :	SUB-SECTION :	OCTOBER/2002
								APPROVED BY :	TITLE :	SCALE :
								SITE INFORMATION GEOLOGICAL INFORMATION GEOLOGICAL SECTION (J)		H. 1:1500 V. 1:300 DRAWING NO. SI-02-009

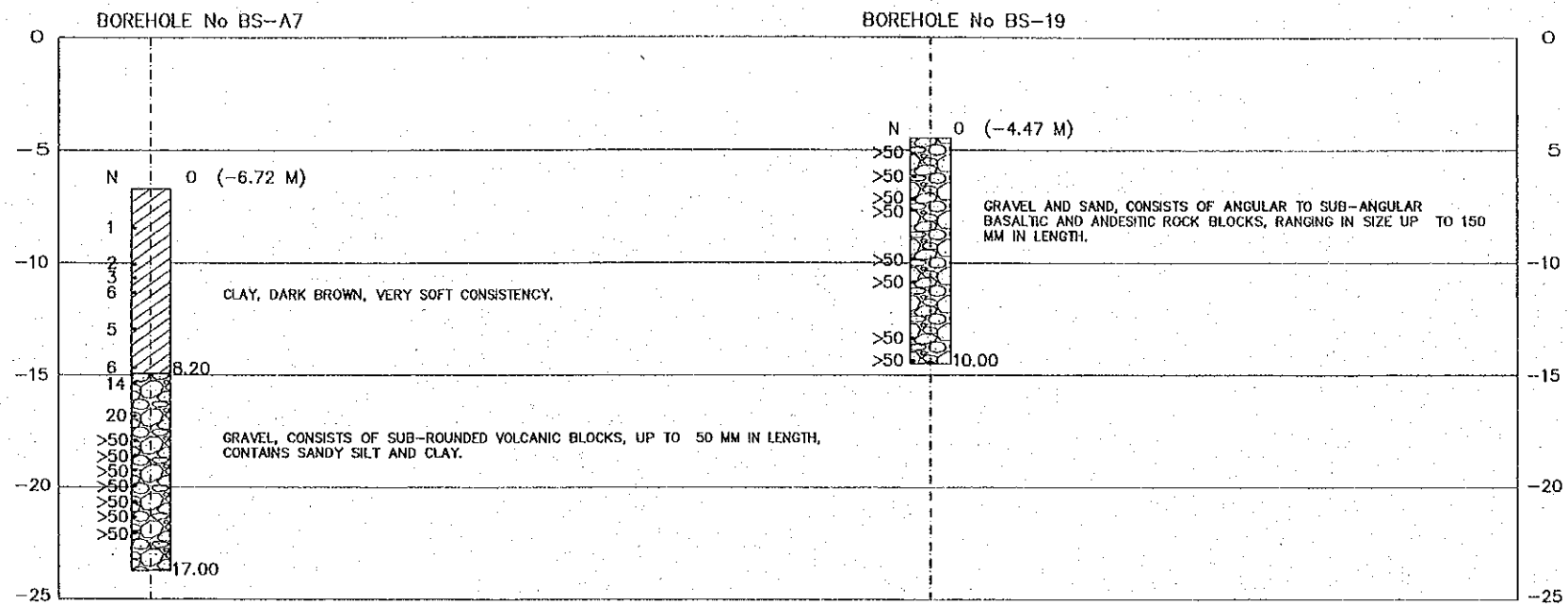


NOTES:

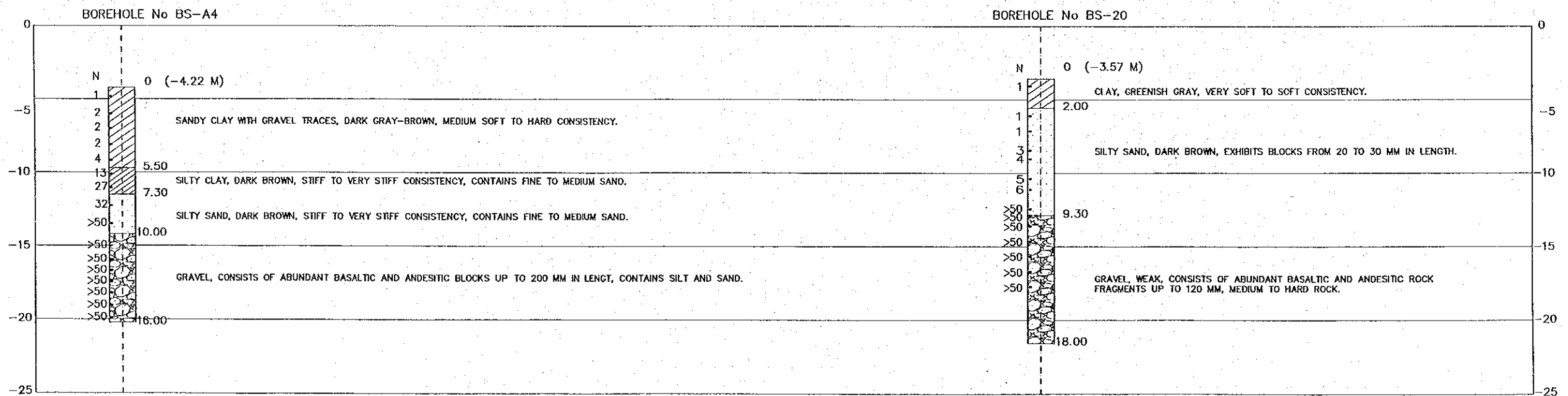
-DEPTHS ARE REFERRED TO CDL
 -ALL INFORMATION ON THIS SHEET IS ONLY FOR REFERENCE

REV. NO.	DATE	COORDINATE	BY	APPROVED	DATE	JAPAN INTERNATIONAL COOPERATION AGENCY (JICA) COMISION EJECUTIVA PORTUARIA AUTONOMA (CEPA)		THE DETAILED DESIGN ON PORT REACTIVATION PROJECT IN LA UNION PROVINCE OF THE REPUBLIC OF EL SALVADOR NIPPON KOEI CO., LTD.		DESIGNED BY : CHECKED BY : APPROVED BY :	SECTION : SITE INFORMATION SUB-SECTION : GEOLOGICAL INFORMATION TITLE : GEOLOGICAL SECTION (K)	DATE : OCTOBER/2002 SCALE : V : H. 1:2,500 V. 1:300 DRAWING NO : SI-02-010

SECTION L - L



SECTION M - M



NOTES:
 -DEPTHS ARE REFERRED TO CDL
 -ALL INFORMATION ON THIS SHEET IS ONLY FOR REFERENCE

REV. NO.	DATE	COORDINATE	BY	APPROVED	DATE	JICA JAPAN INTERNATIONAL COOPERATION AGENCY (JICA)	COMISION EJECUTIVA PORTUARIA AUTONOMA (CEPA)	THE DETAILED DESIGN ON PORT REACTIVATION PROJECT IN LA UNION PROVINCE OF THE REPUBLIC OF EL SALVADOR NIPPON KOEI CO., LTD.	DESIGNED BY :	SECTION :	DATE :
									CHECKED BY :	SUB-SECTION :	OCTOBER/2002
									APPROVED BY :	TITLE :	SCALE :
										GEOLOGICAL SECTIONS (L-M)	H. 1:4,000 V. 1:300
											DRAWING NO. : SI-02-011

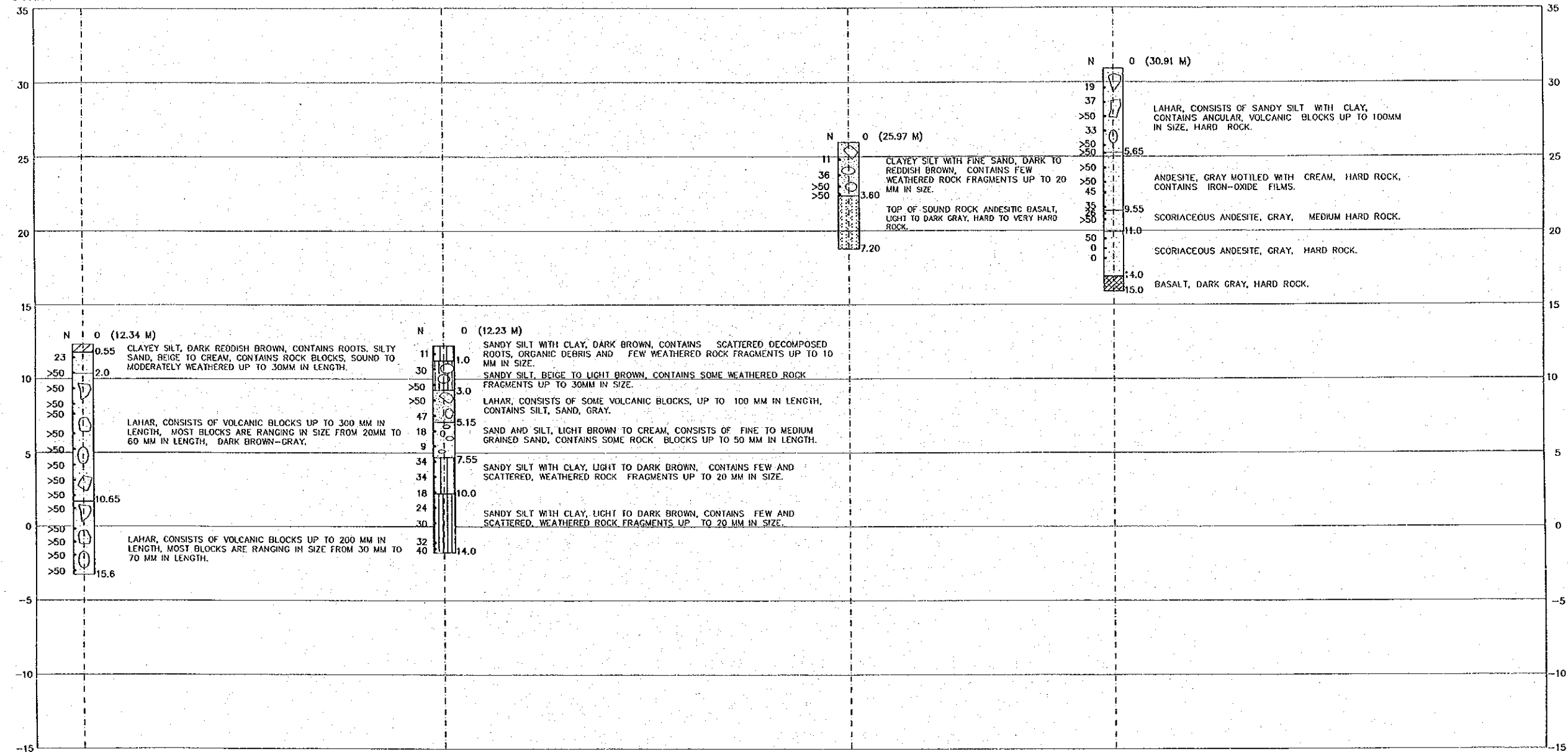
SECTION N - N

BOREHOLE No BL-01

BOREHOLE No BL-02

BOREHOLE No BL-03

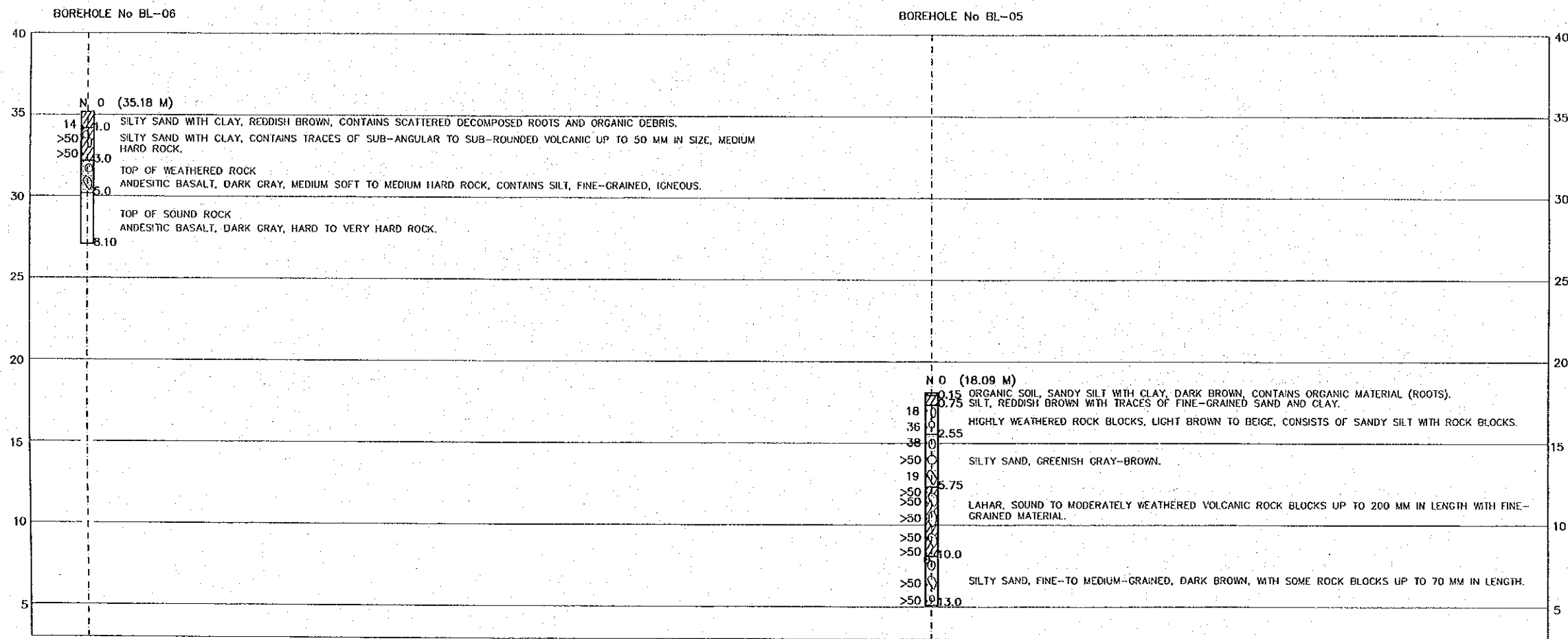
BOREHOLE No BL-04



NOTES:
 -DEPTHS ARE REFERRED TO CDL
 -ALL INFORMATION ON THIS SHEET IS ONLY FOR REFERENCE

REV. NO.	DATE	COORDINATE	BY	APPROVED	DATE	JICA JAPAN INTERNATIONAL COOPERATION AGENCY (JICA)	COMISION EJECUTIVA PORTUARIA AUTONOMA (CEPA)	THE DETAILED DESIGN ON PORT REACTIVATION PROJECT IN LA UNION PROVINCE OF THE REPUBLIC OF EL SALVADOR NIPPON KOEI CO., LTD.	DESIGNED BY :	SECTION : SITE INFORMATION	DATE : OCTOBER/2002
									CHECKED BY :	SUB-SECTION : GEOLOGICAL INFORMATION	SCALE : H. 1:2,500 V. 1:300
									APPROVED BY :	TITLE : GEOLOGICAL SECTION (N)	DRAWING NO : SI-02-012

SECTION 0 - 0

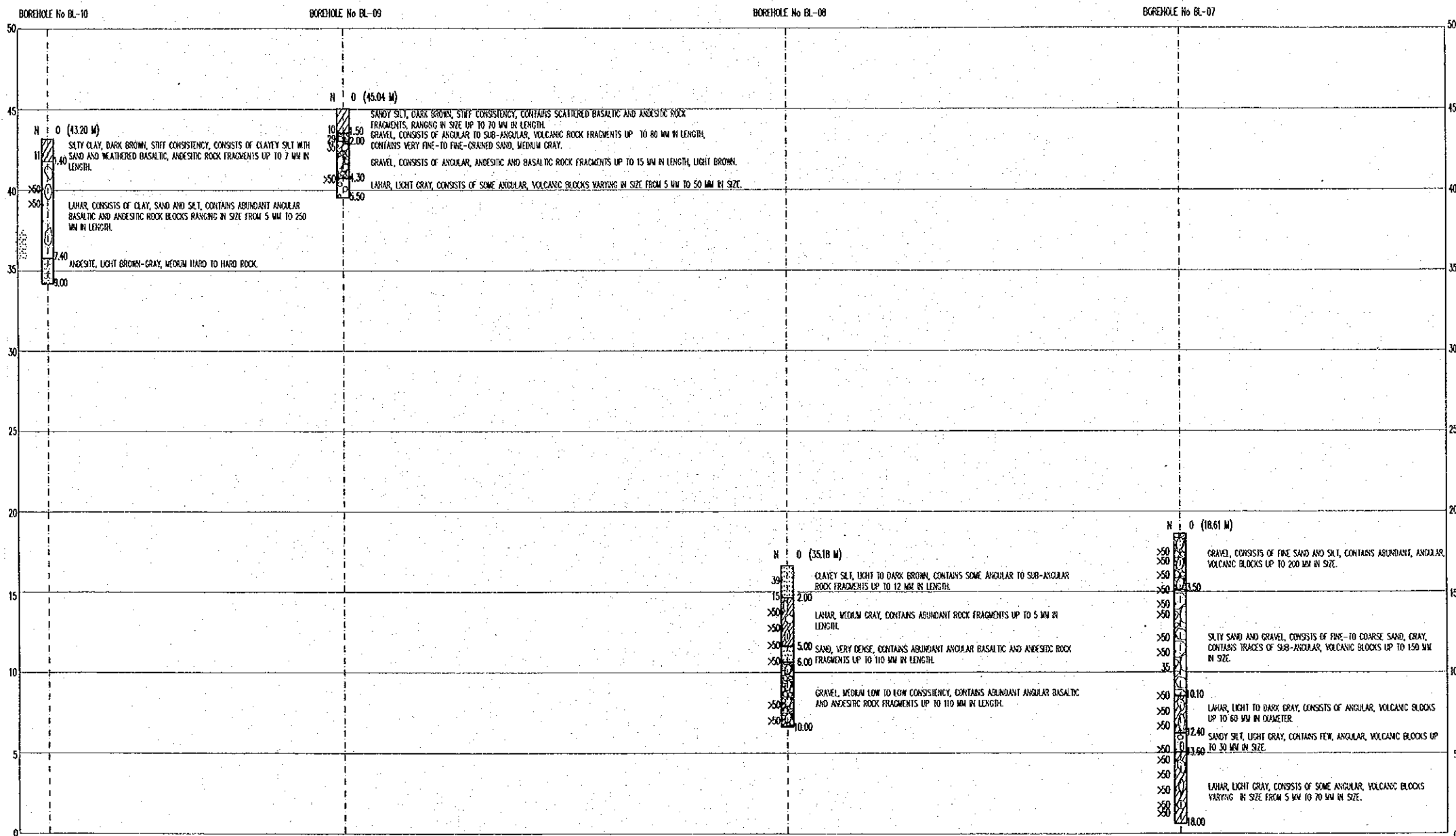


NOTES:

-DEPTHS ARE REFERRED TO CDL
 -ALL INFORMATION ON THIS SHEET IS ONLY FOR REFERENCE

REV. NO.	DATE	COORDINATE	BY	APPROVED	DATE	JAPAN INTERNATIONAL COOPERATION AGENCY (JICA) COMISION EJECUTIVA PORTUARIA AUTONOMA (CEPA)	THE DETAILED DESIGN ON PORT REACTIVATION PROJECT IN LA UNION PROVINCE OF THE REPUBLIC OF EL SALVADOR NIPPON KOEI CO., LTD.	DESIGNED BY :	SECTION :	DATE :
								CHECKED BY :	SUB-SECTION :	OCTOBER/2002
							APPROVED BY :	TITLE :	SCALE :	
								GEOLOGICAL SECTION (0)	H. 1 : 2,500 V. 1 : 300	
									DRAWING NO. :	SI-02-013

SECTION P - P



NOTES:

-DEPTHS ARE REFERRED TO CDL
 -ALL INFORMATION ON THIS SHEET IS ONLY FOR REFERENCE

REV. NO.	DATE	COORDINATE	BY	APPROVED	DATE	 JAPAN INTERNATIONAL COOPERATION AGENCY (JICA)	 COMISION EJECUTIVA PORTUARIA AUTONOMA (CEPA)	 THE DETAILED DESIGN ON PORT REACTIVATION PROJECT IN LA UNION PROVINCE OF THE REPUBLIC OF EL SALVADOR	 NIPPON KOEI CO., LTD.	DESIGNED BY :	SECTION : SITE INFORMATION	DATE : OCTOBER/2002
										CHECKED BY :		SUB-SECTION : GEOLOGICAL INFORMATION
										APPROVED BY :	TITLE : GEOLOGICAL SECTION (P)	DRAWING NO. : SI-02-014