

Table 6.3-9 Annual Average Concentration of the Air Pollutant in Ulaanbaatar (1985-2000)

(Unit: $\mu\text{g}/\text{m}^3\text{N}$)

Year	SO ₂ Annual Average				NO ₂ Annual Average				Dust (SPM) Annual Average			
	No.1 Station	No.2 Station	No.3 Station	No.4 Station	No.1 Station	No.2 Station	No.3 Station	No.4 Station	No.1 Station	No.2 Station	No.3 Station	No.4 Station
1985	--	--	--	--	31	51	21	--	180	100	100	--
1986	9	11	9	--	31	62	31	--	160	80	100	--
1987	11	7	7	--	21	51	21	--	120	200	100	--
1988	9	9	7	--	31	51	10	--	140	--	--	--
1989	9	9	7	--	41	62	31	--	120	200	200	--
1990	7	6	6	--	37	83	36	--	160	300	100	--
1991	9	9	6	--	34	86	42	--	--	--	--	--
1992	9	12	13	--	29	103	39	--	--	--	--	--
1993	9	7	8	--	32	115	46	--	--	--	--	--
1994	3	5	--	--	11	25	--	--	--	--	--	--
1995	4	4	2	--	17	27	14	--	--	--	--	--
1996	26	13	7	9	29	61	29	18	150	--	--	129
1997	14	8	2	3	--	21	14	17	98	--	--	170
1998	13	7	3	3	--	26	15	24	151	--	--	115
1999	3	10	3	6	--	32	15	21	--	--	--	--
2000	15	10	4	7	33	41	18	28	145	--	--	--

Recorded by: Central Laboratory of Nature and Environment

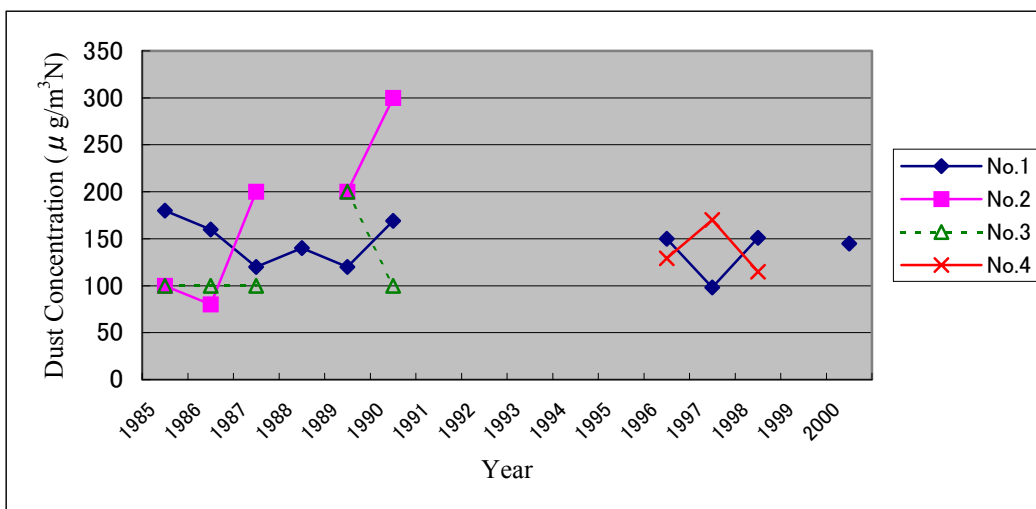
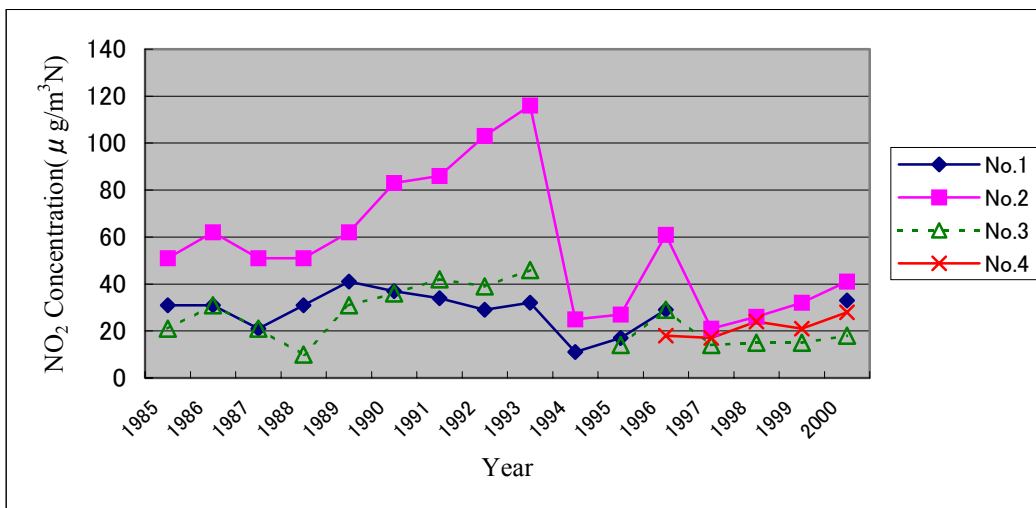
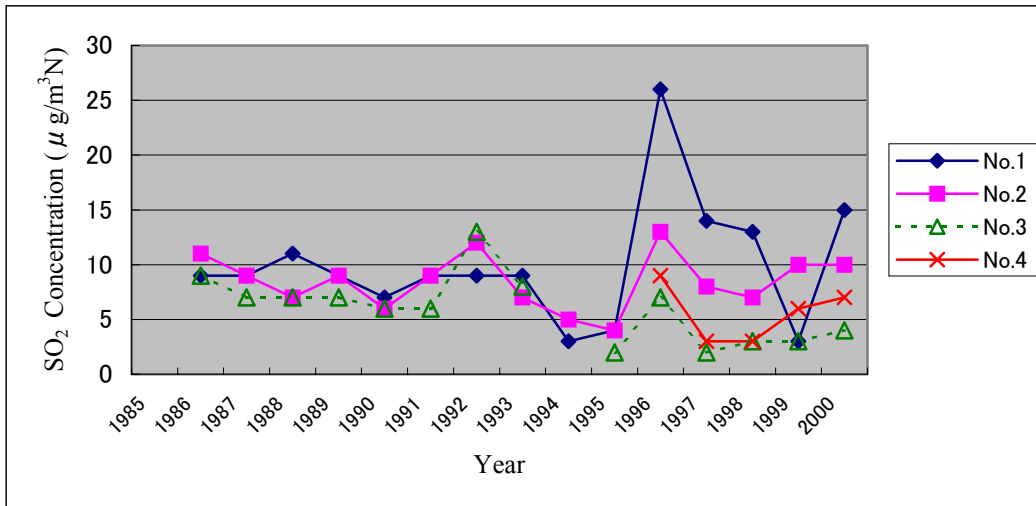


Fig. 6.3-5 Trend of Air Pollutant Concentration in Ulaanbaatar (Annual Average)

Table 6.3-10 Air Quality Monitoring Data in 2000

SO ₂ Concentration $\mu\text{g}/\text{m}^3\text{N}$		Standard value: No.1St. 70 $\mu\text{g}/\text{m}^3\text{N}$, No.2~No.4St. 30 $\mu\text{g}/\text{m}^3\text{N}$												
		Jan	Feb	Mar	Apr	May	Jun	Jul	Aug	Sep	Oct	Nov	Dec	Total
Station No.1	Ave	-	-	-	-	-	-	-	-	-	6	18	20	-
	Max	-	-	-	-	-	-	-	-	-	21	41	30	-
	Min	-	-	-	-	-	-	-	-	-	3	3	10	-
	Days exceeded Standard	-	-	-	-	-	-	-	-	-	0	0	0	0
Station No.2	Ave	21	19	10	4	4	5	3	3	5	-	-	20	-
	Max	36	27	21	10	11	12	9	12	14	-	-	31	-
	Min	12	9	4	2	0	0	0	0	0	-	-	-	-
	Days exceeded Standard	1	0	0	0	0	0	0	0	0	-	-	0	1
Station No.3	Ave	19	19	11	-	0	0	0	0	0	-	-	-	-
	Max	34	28	16	-	1	1	1	1	3	-	-	-	-
	Min	11	9	8	-	0	-	0	0	0	-	-	11	-
	Days exceeded Standard	1	0	0	-	0	-	0	0	0	-	-	-	1
Station No.4	Ave	20	15	9	3	2	1	1	1	4	4	10	16	-
	Max	32	28	20	21	4	2	2	4	13	12	23	27	-
	Min	8	3	2	1	1	0	0	0	0	1	1	5	-
	Days exceeded Standard	1	0	0	0	0	0	0	0	0	0	0	0	1

NO ₂ Concentration $\mu\text{g}/\text{m}^3\text{N}$		Standard value: No.1St. 60 $\mu\text{g}/\text{m}^3\text{N}$, No.2~No.4St. 40 $\mu\text{g}/\text{m}^3\text{N}$												
		Jan	Feb	Mar	Apr	May	Jun	Jul	Aug	Sep	Oct	Nov	Dec	Total
Station No.1	Ave	-	-	-	-	-	-	-	-	-	-	-	-	-
	Max	-	-	-	-	-	-	-	-	-	-	-	-	-
	Min	-	-	-	-	-	-	-	-	-	-	-	-	-
	Days exceeded Standard	-	-	-	-	-	-	-	-	-	-	-	-	-
Station No.2	Ave	39	44	30	30	35	43	39	51	54	-	-	60	-
	Max	64	66	45	59	60	72	60	87	78	-	-	80	-
	Min	20	33	15	6	9	22	13	25	20	-	-	30	-
	Days exceeded Standard	10	13	3	4	7	15	12	18	18	-	-	9	109
Station No.3	Ave	20	23	16	13	14	17	18	15	21	-	-	-	-
	Max	30	36	22	24	33	26	46	27	30	-	-	-	-
	Min	9	12	10	8	5	-	-	8	13	-	-	-	-
	Days exceeded Standard	0	0	0	0	0	-	-	0	0	-	-	-	0
Station No.4	Ave	26	30	23	24	24	22	24	26	32	28	36	41	-
	Max	51	46	43	32	37	29	28	48	49	45	50	75	-
	Min	14	14	11	10	10	11	15	14	20	8	15	26	-
	Days exceeded Standard	1	0	1	0	0	0	0	1	2	1	10	14	30

Dust (SPM) Concentration $\mu\text{g}/\text{m}^3\text{N}$		Standard value: 150 $\mu\text{g}/\text{m}^3\text{N}$												
		Jan	Feb	Mar	Apr	May	Jun	Jul	Aug	Sep	Oct	Nov	Dec	Total
Station No.1	Ave	-	-	117	124	164	209	-	73	159	167	139	-	-
	Max	-	-	145	145	218	377	-	118	172	249	214	-	-
	Min	-	-	80	77	141	110	-	61	159	117	121	-	-
	Days exceeded Standard	-	-	0	0	4	4	-	0	2	3	3	-	16

Recorded by: Central Laboratory of Nature and Environment

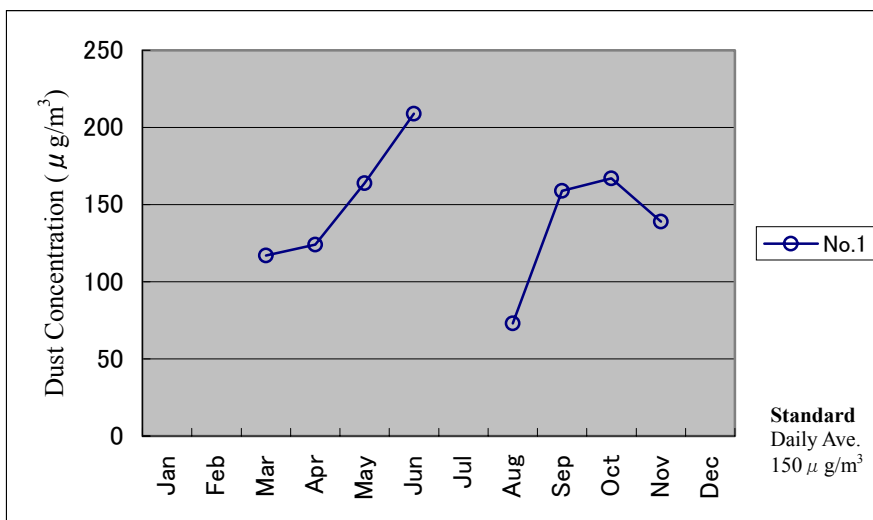
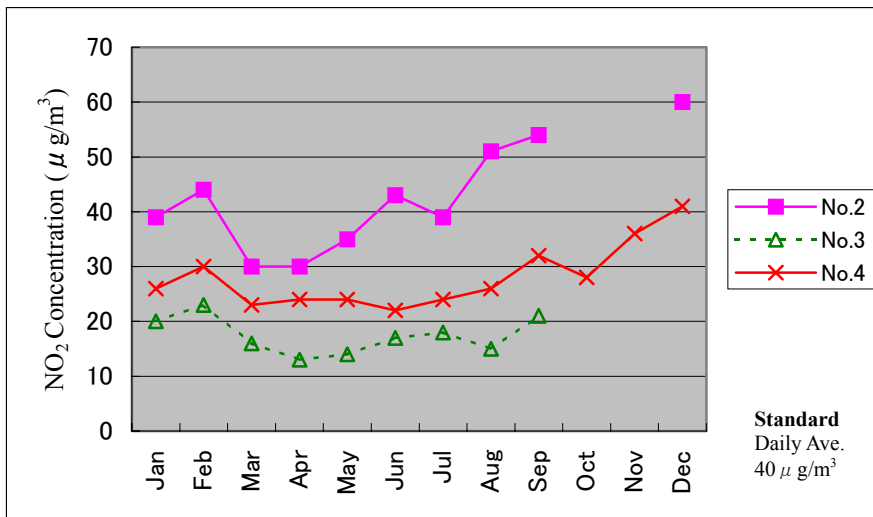
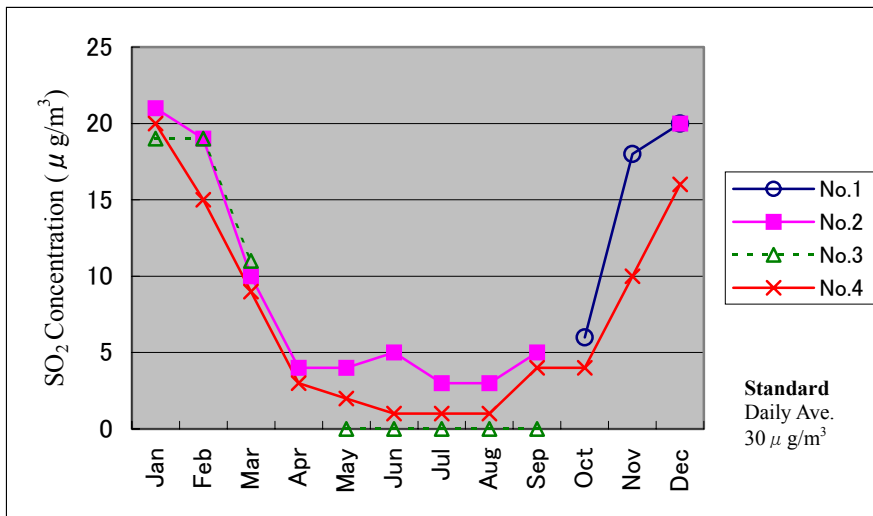


Fig. 6.3-6 Air Pollutant Concentration in Ulaanbaatar (2000)