

Figure A-1 Location map of sample

(Map scale, 1/10,000, 1/50,000, 1/100,000)

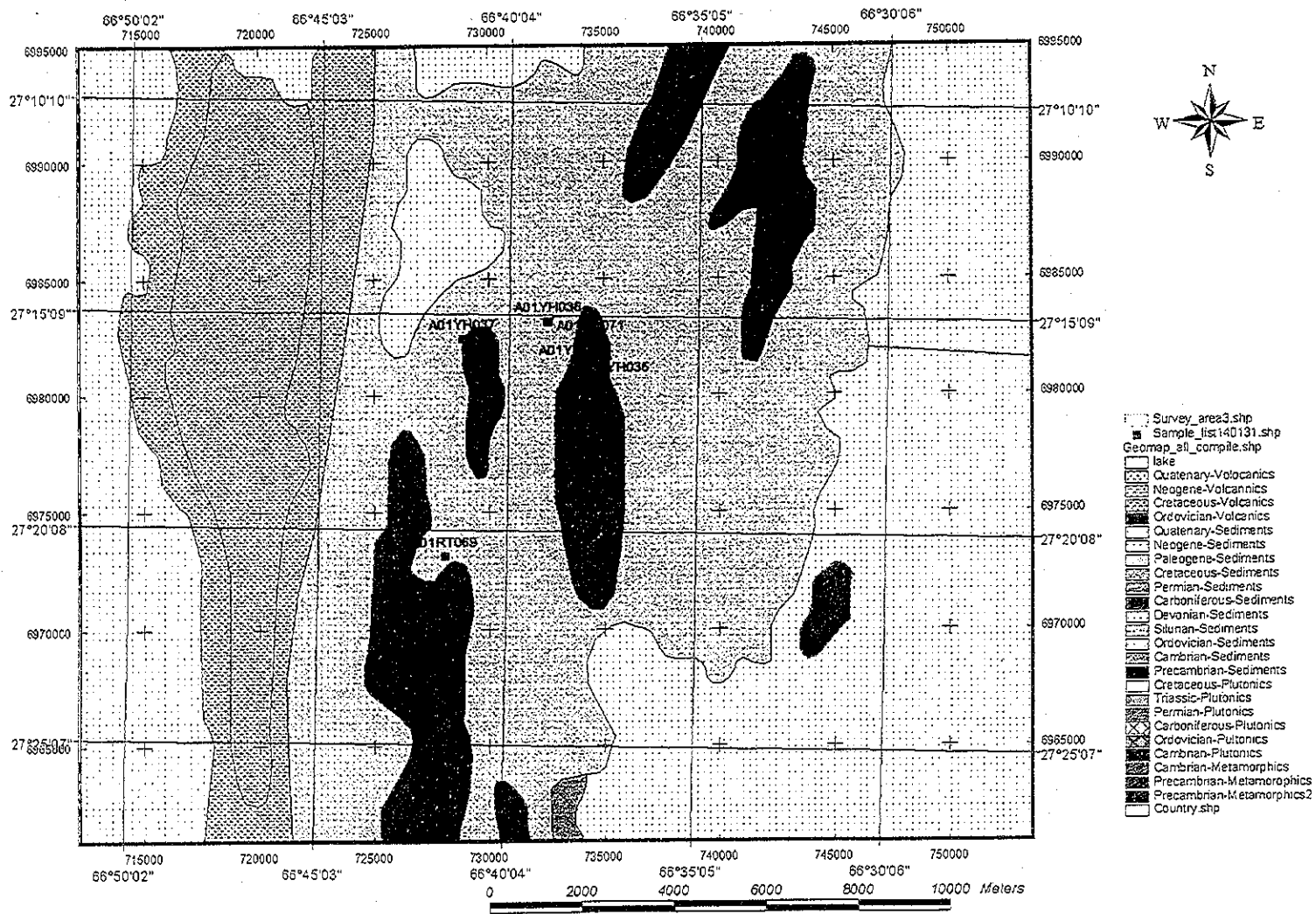


Fig.A-1-1 Sample point of La Gateada mineral showing

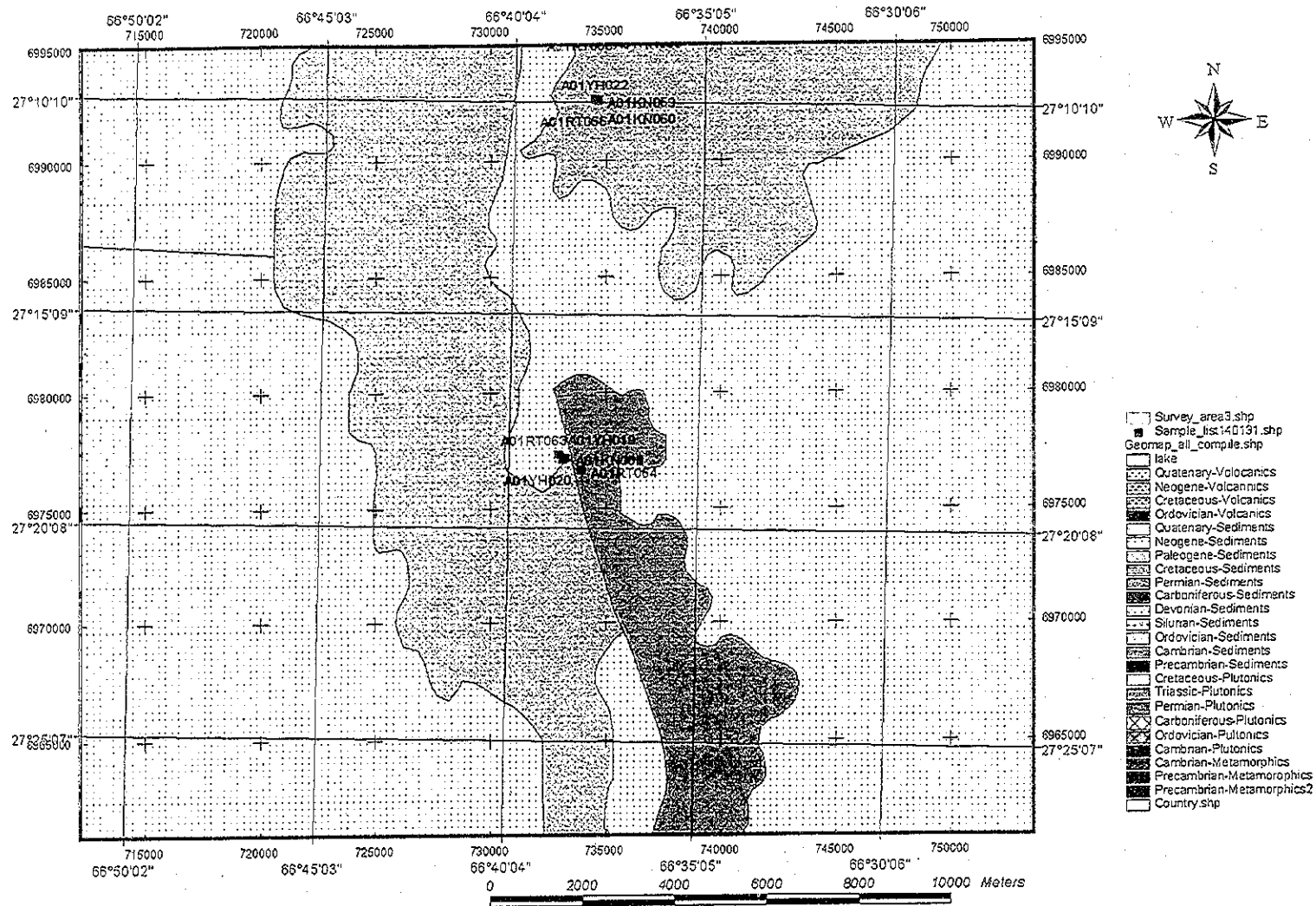


Fig.A-1-2 Sample point of La Belgica mineral showing

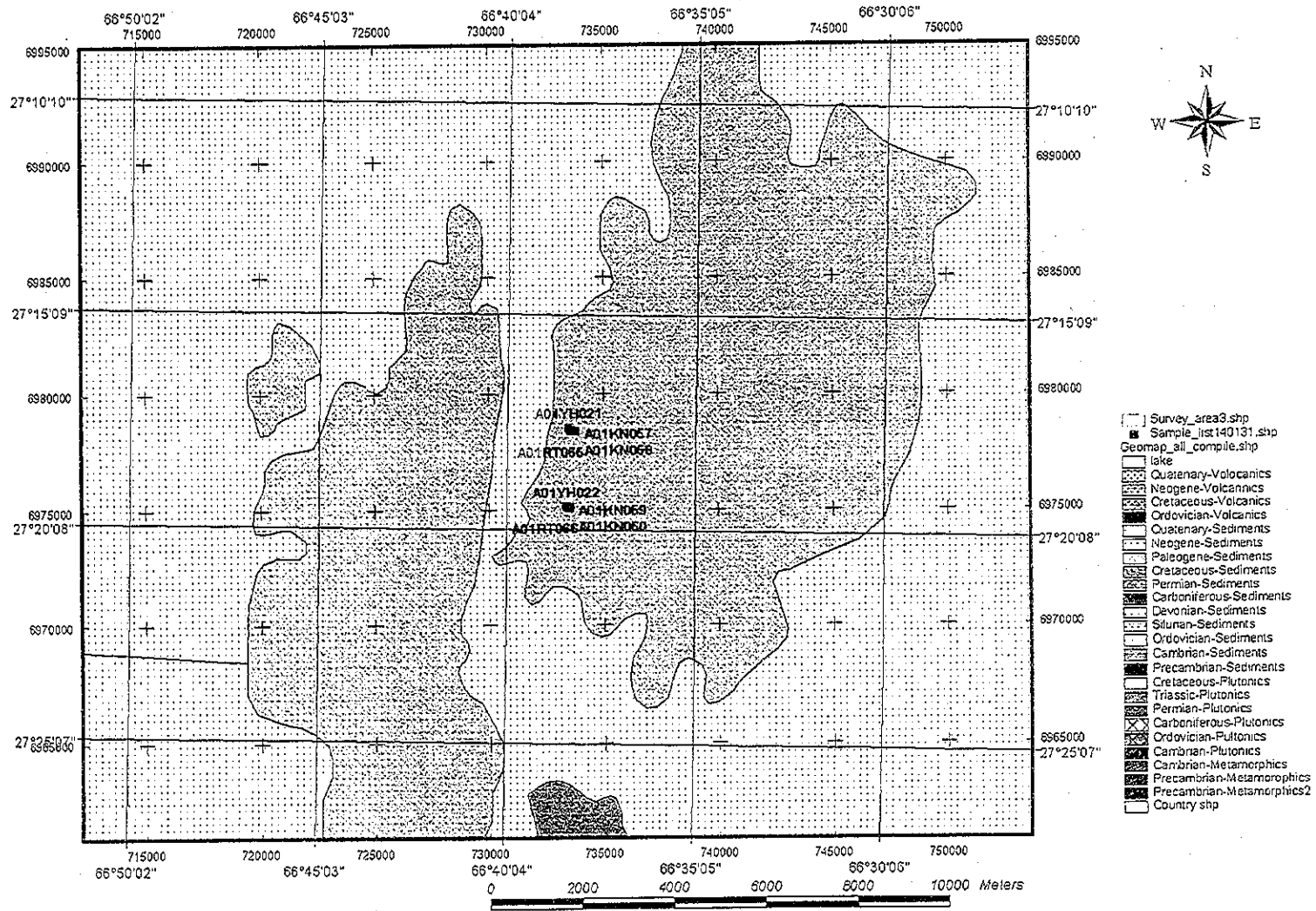


Fig.A-1-3

Sample point of La Pumahuasi mineral showing and Sol de Mayo mineral showing

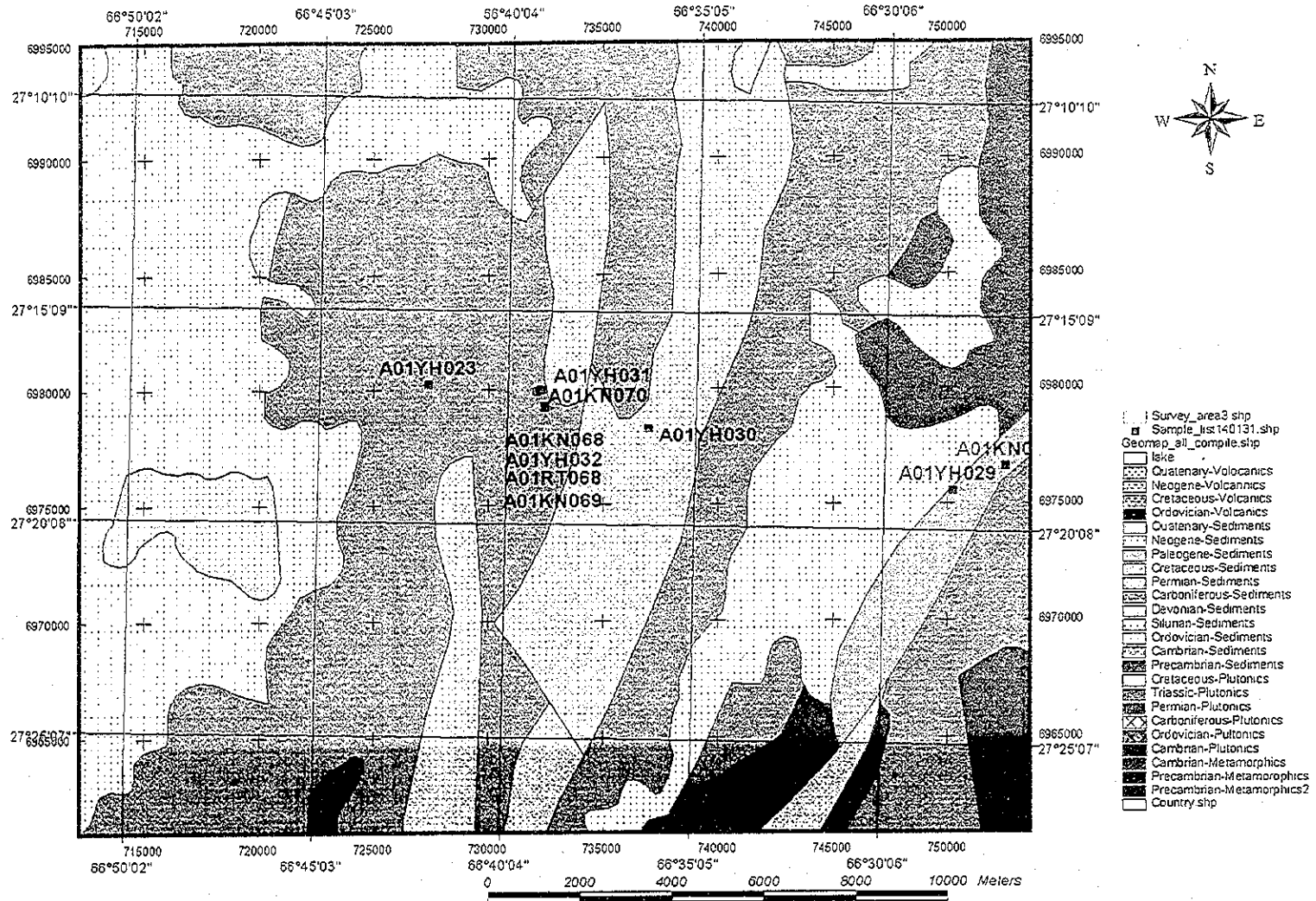


Fig.A-1-4 Sample point of Santa Rosa mineral showing

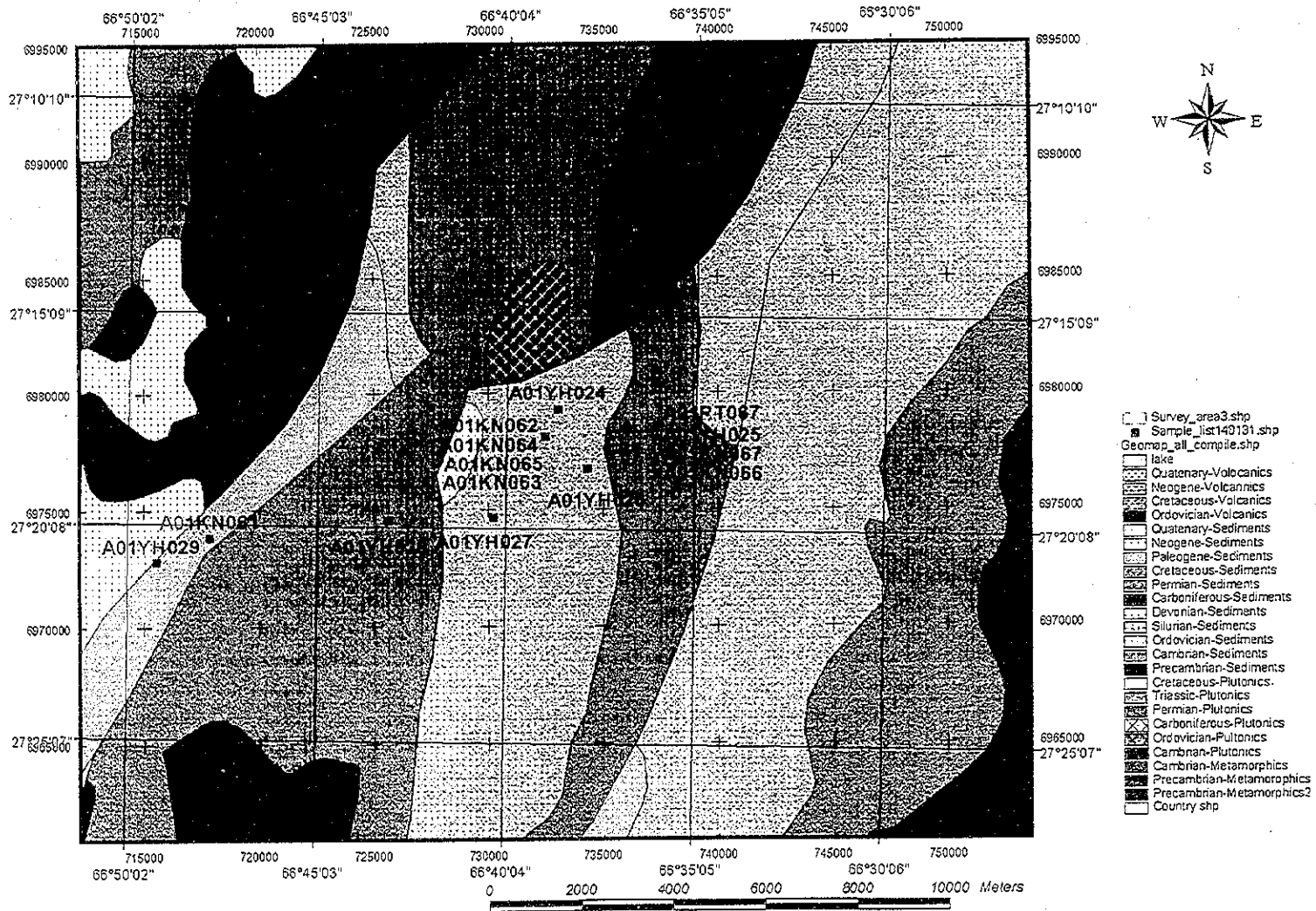


Fig.A-1-5 Sample point of La Cienaga mineral showing

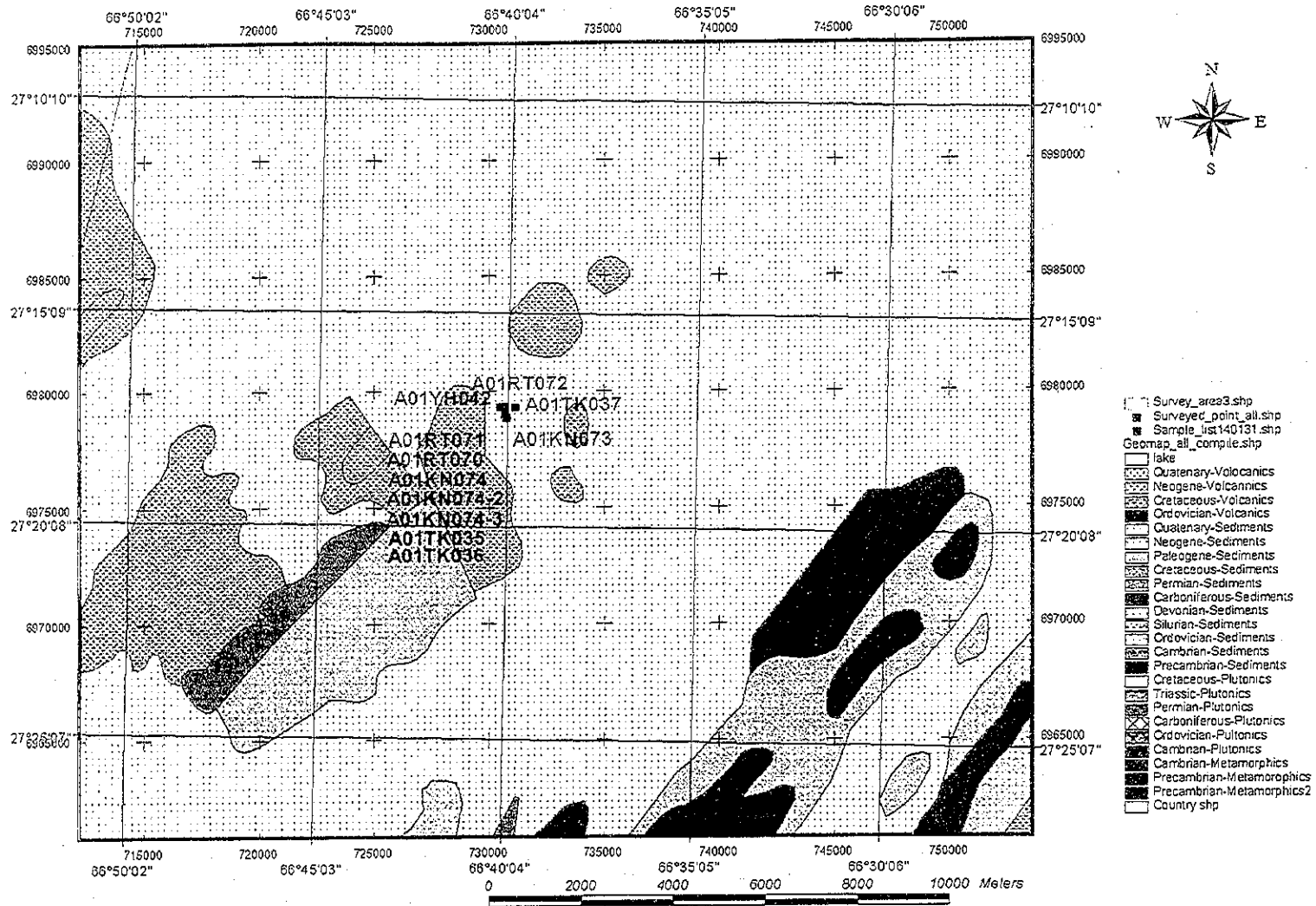


Fig.A-1-6 Sample point of Pan de Azucar mineral showing

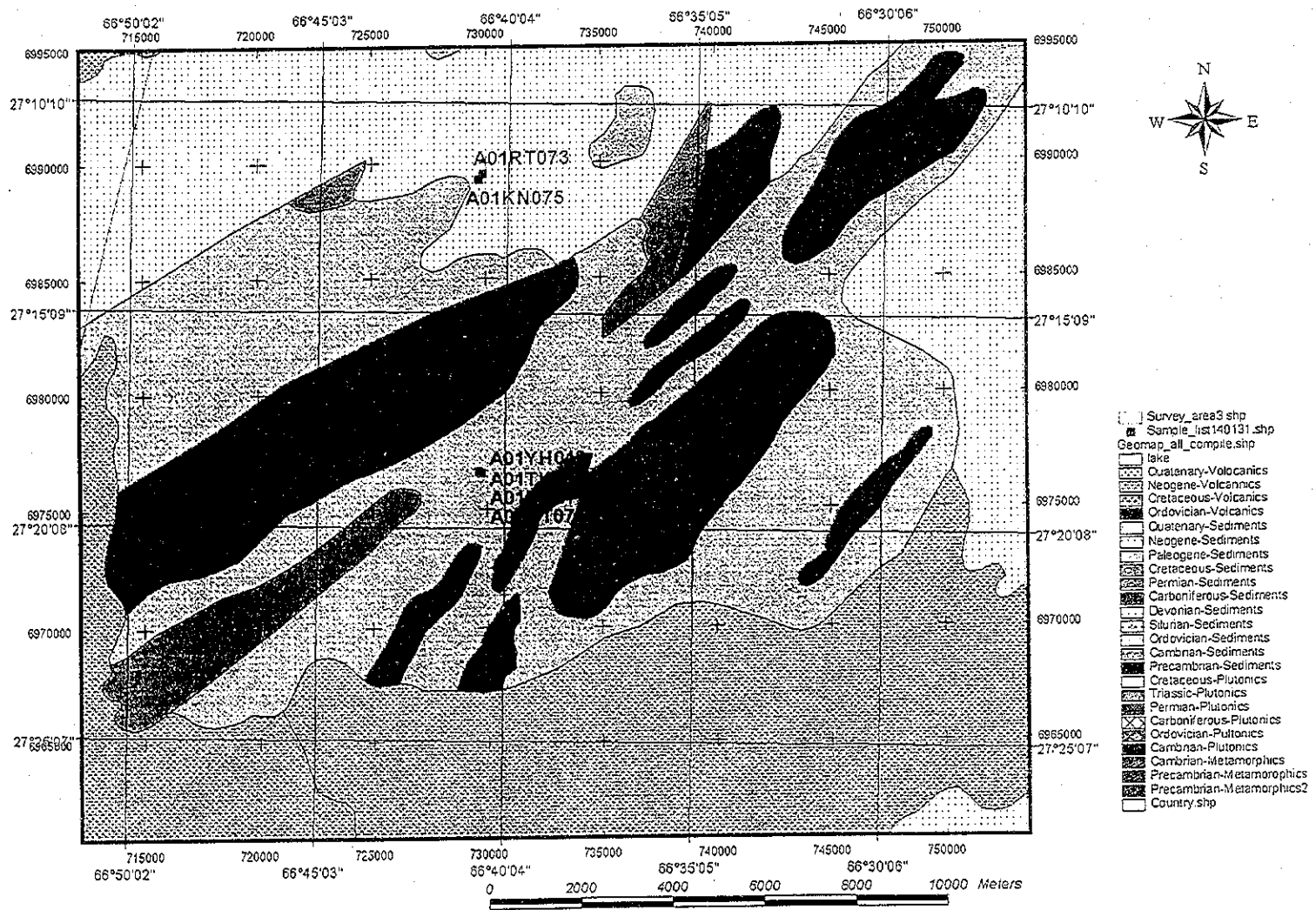


Fig.A-1-7

Sample point of Tupiza mineral showing

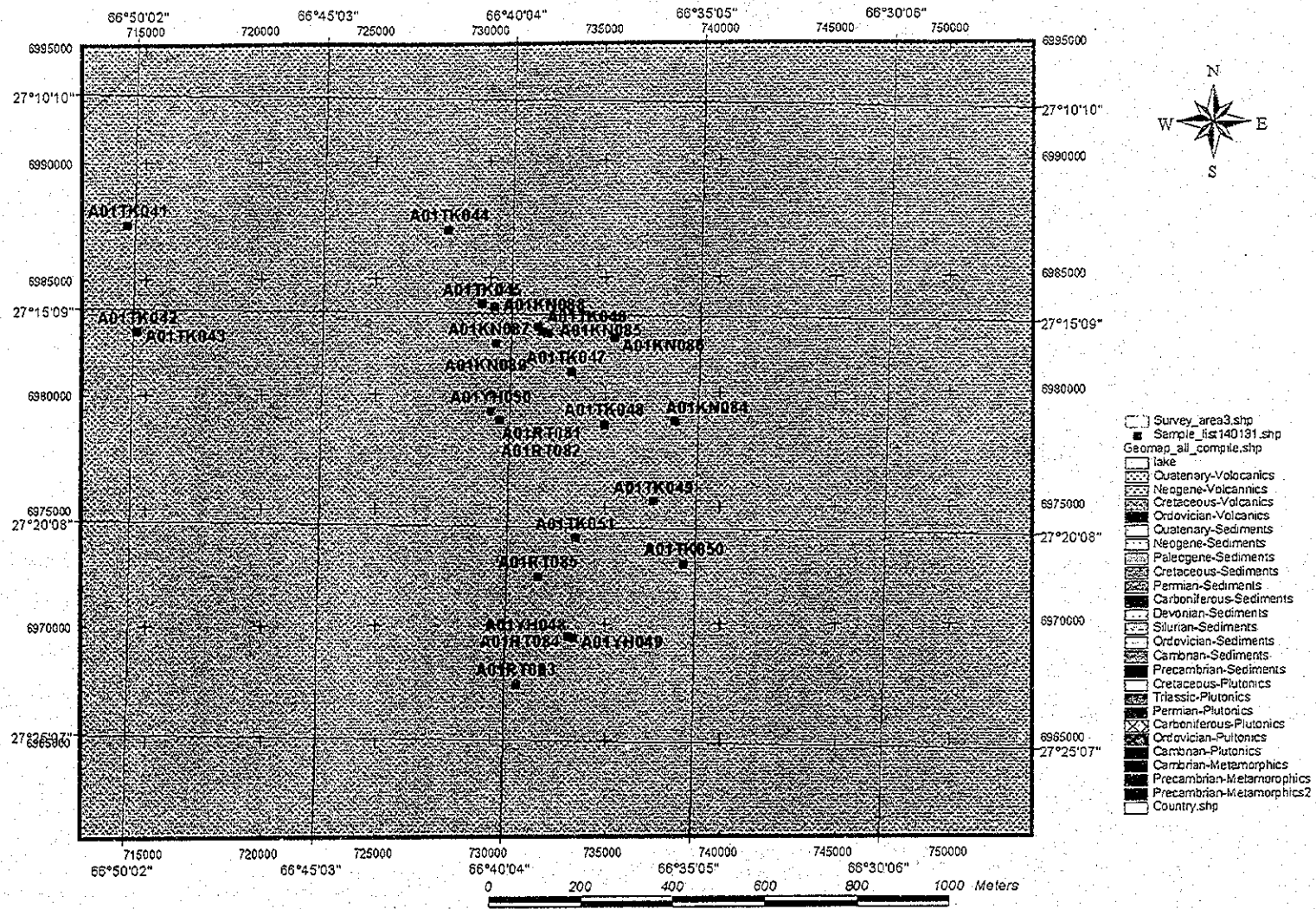


Fig.A-1-8 Sample point of Rachaite mineral showing

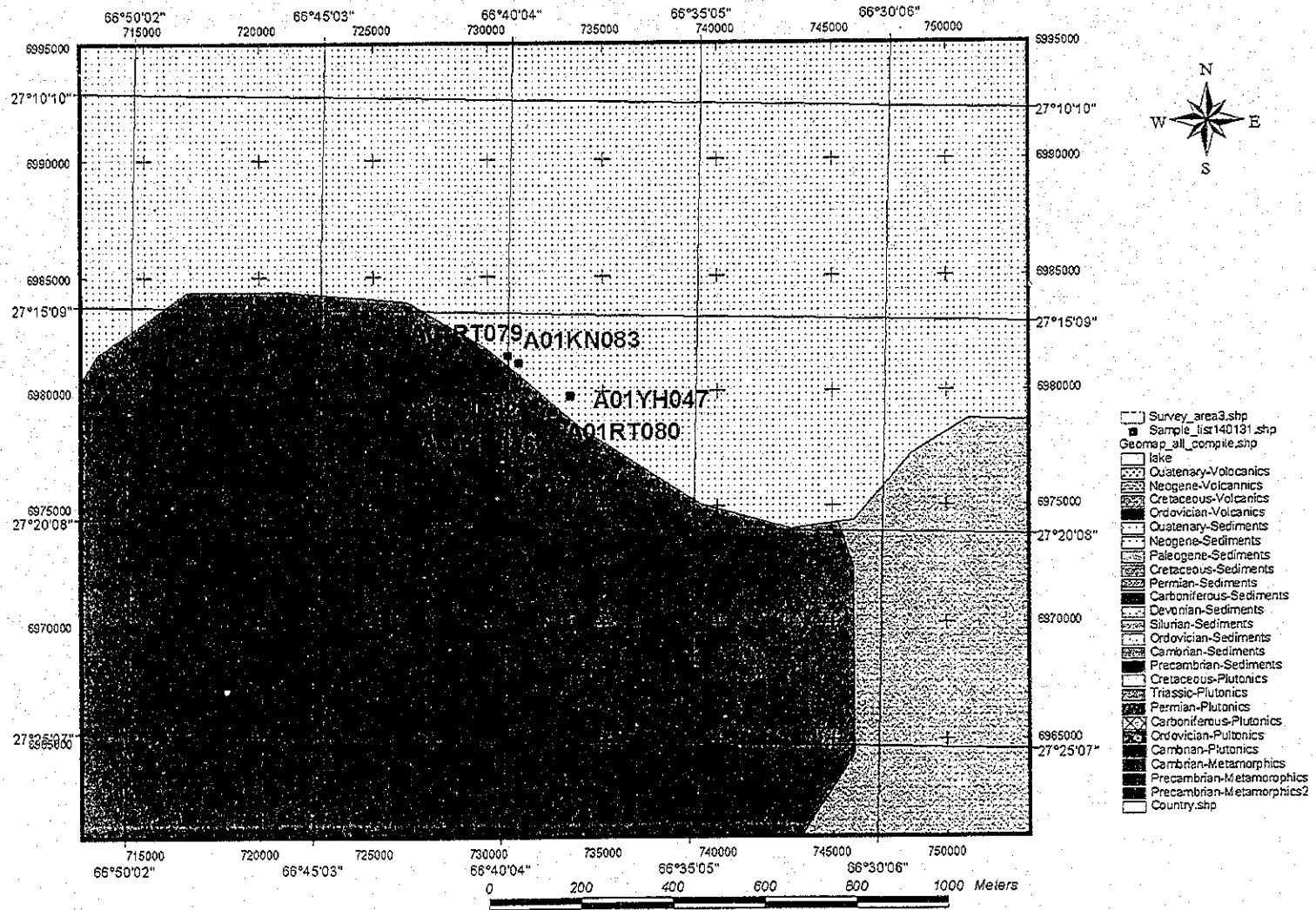


Fig.A-1-9 Sample point of La Candelaria mineral showing

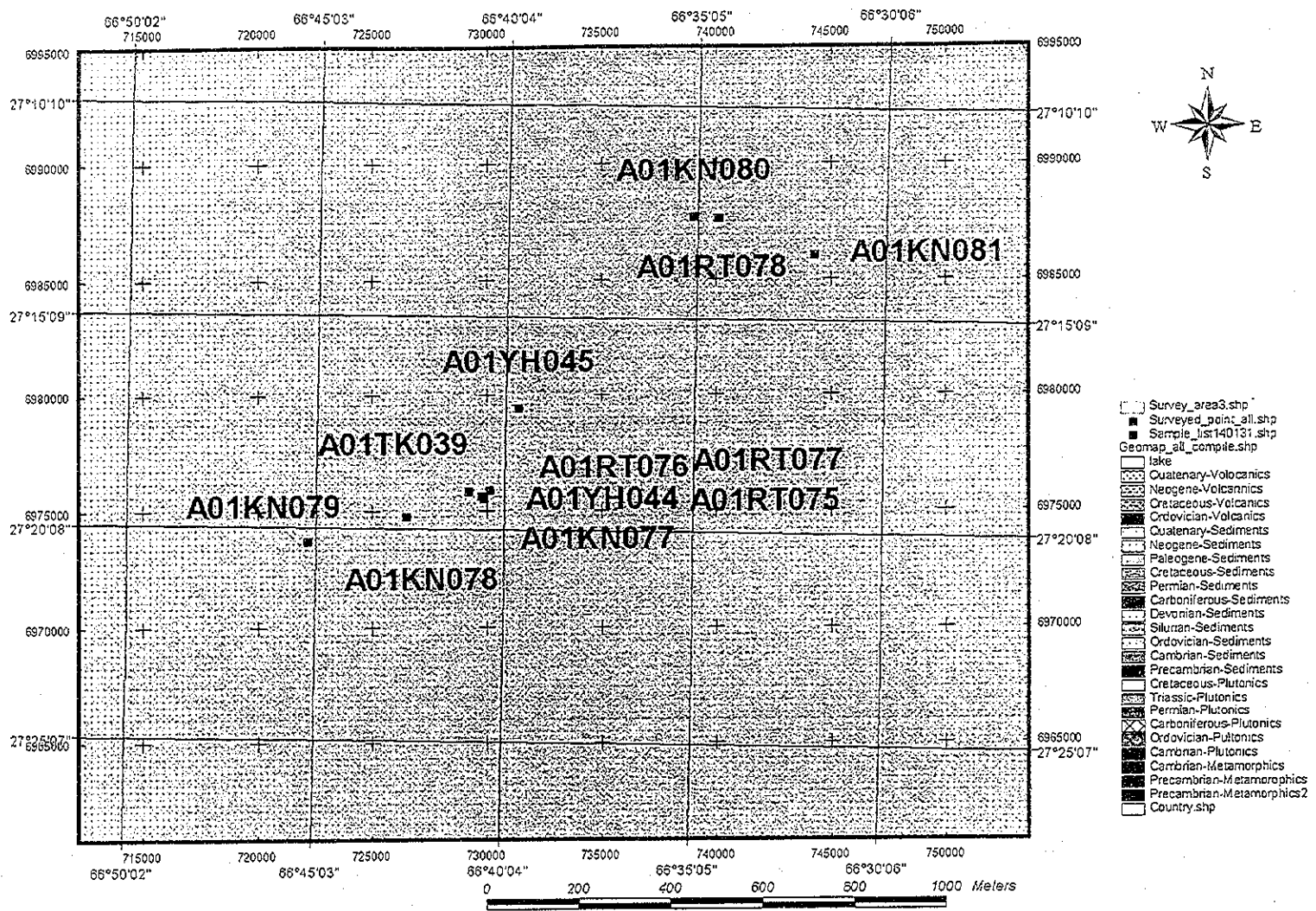


Fig.A-1-10 Sample point of La Pricima-Rumicruz mineral showing

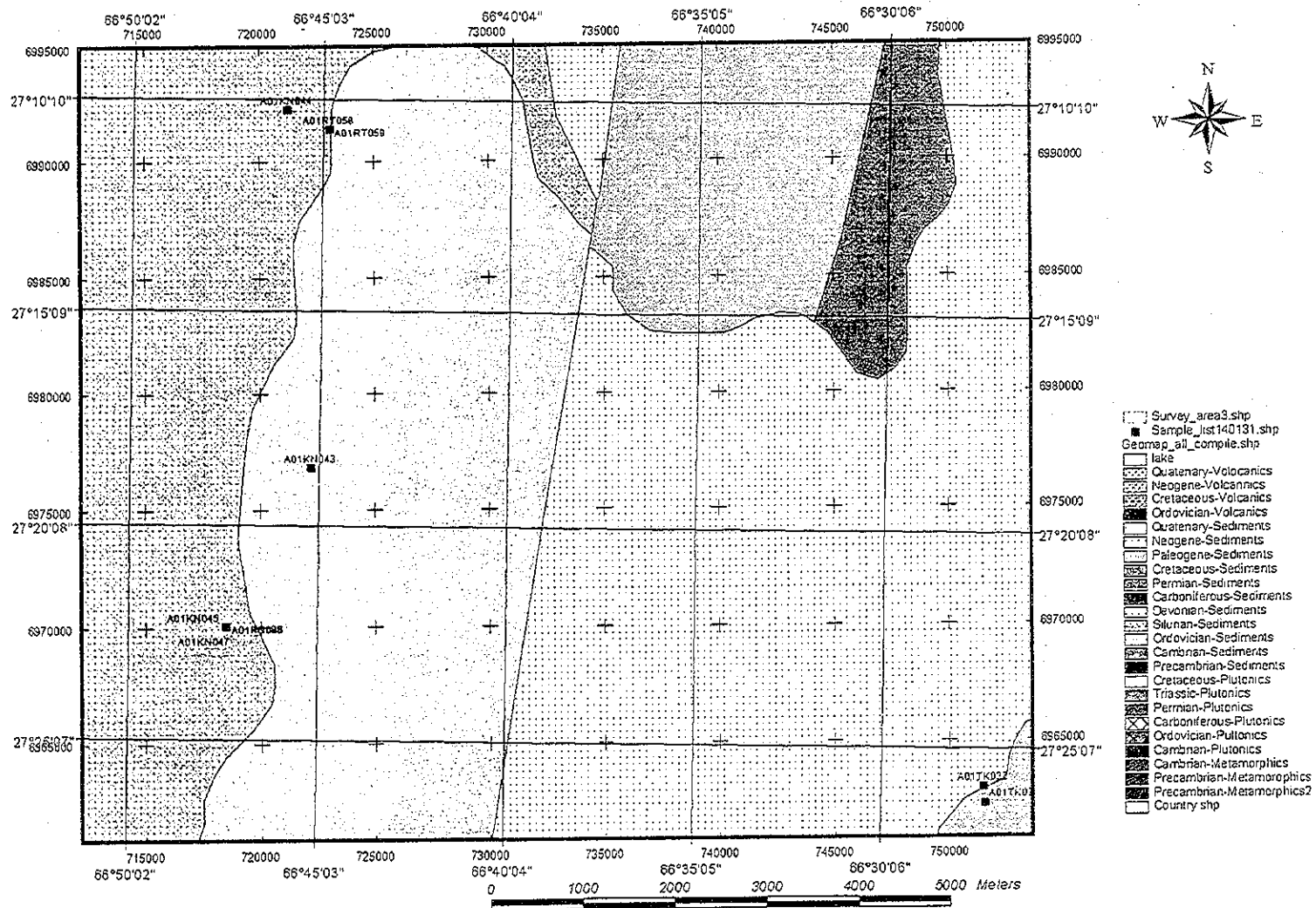


Fig.A-1-11 Sample point of El Aguilar deposit

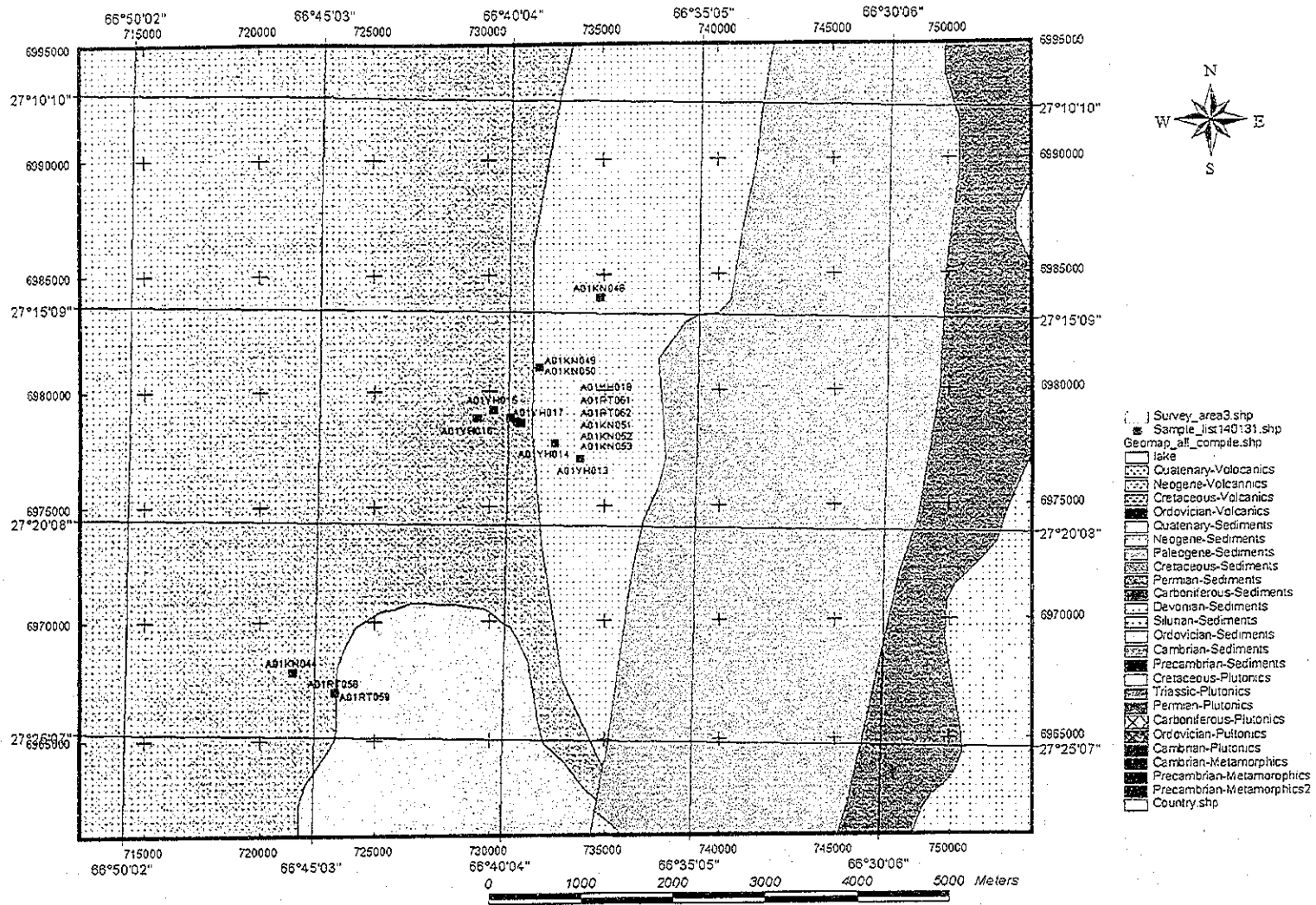


Fig.A-1-12 Sample point of Rio Grande mineral showing

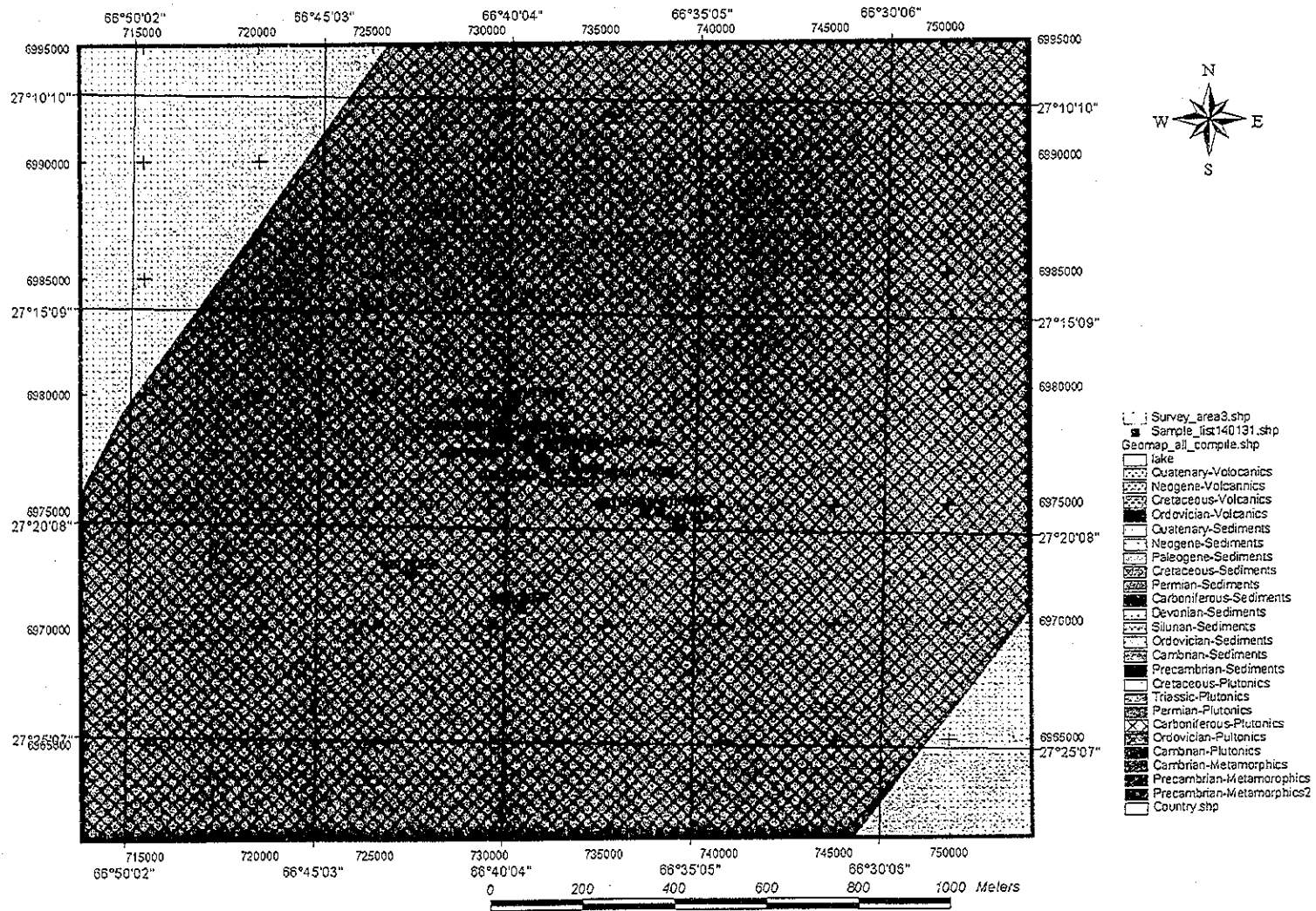


Fig.A-1-13

Sample point of La Colorada mineral showing

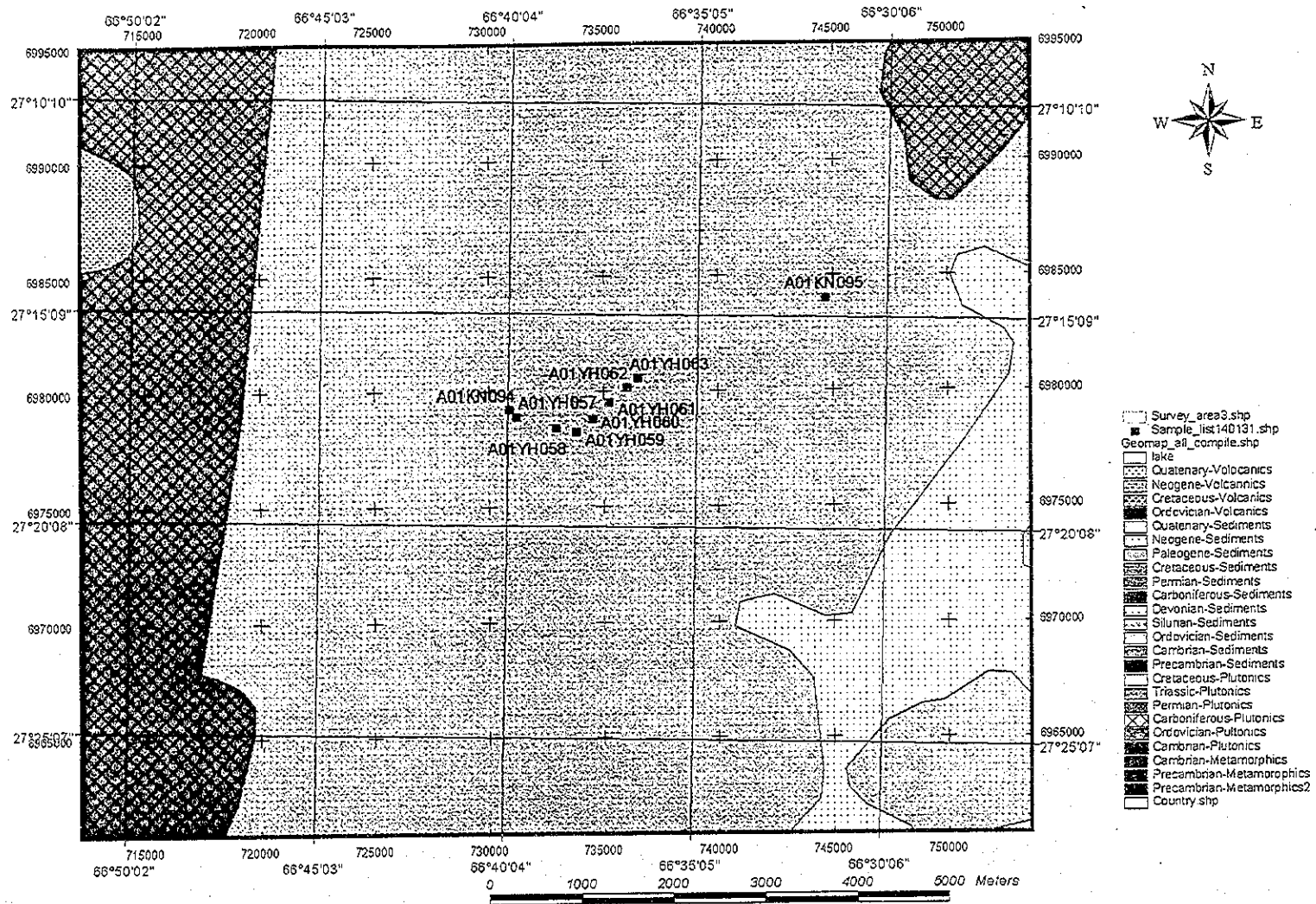


Fig.A-1-14 Sample point of Limeca mineral showing

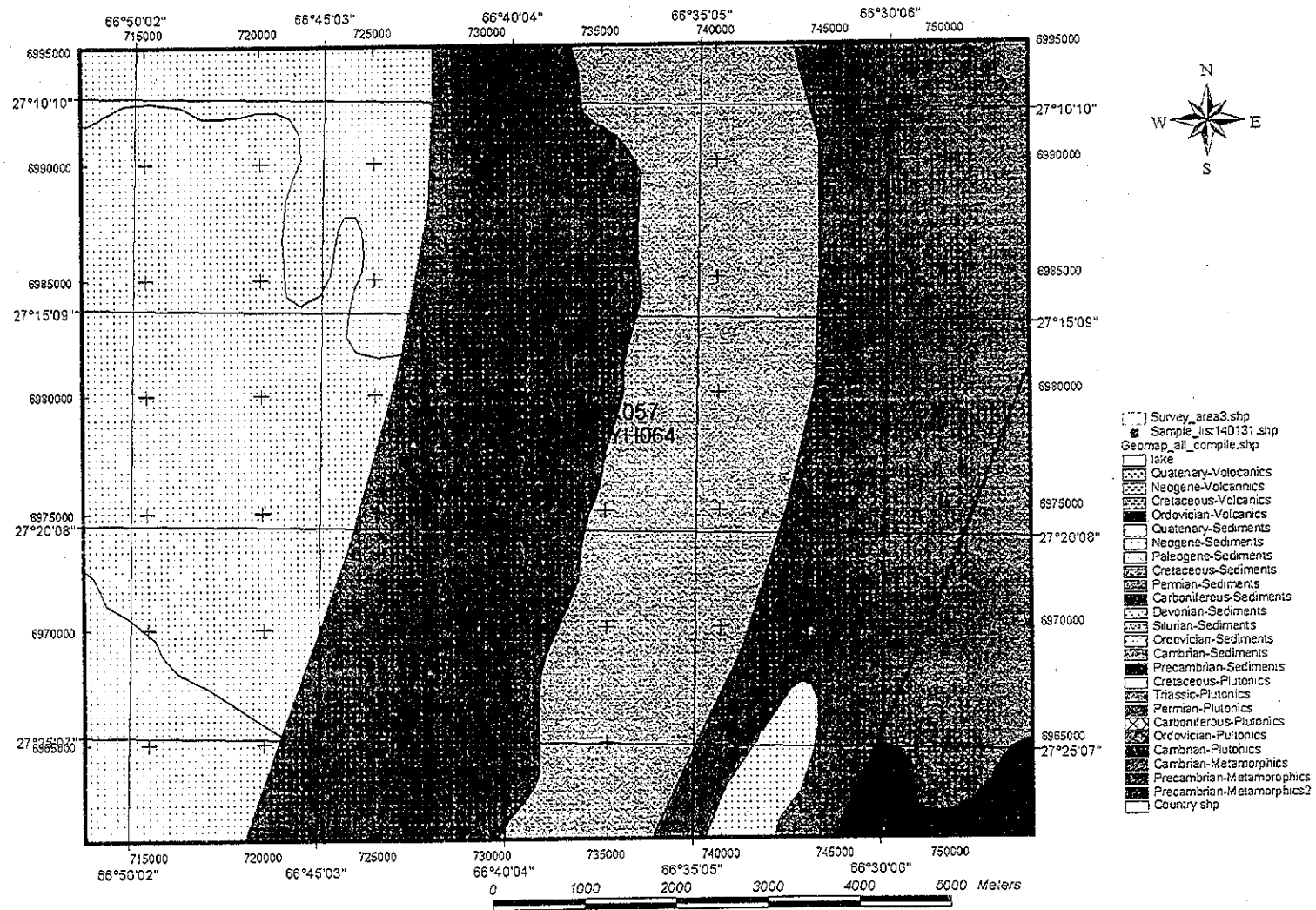


Fig.A-1-15 Sample point of Tusca mineral showing

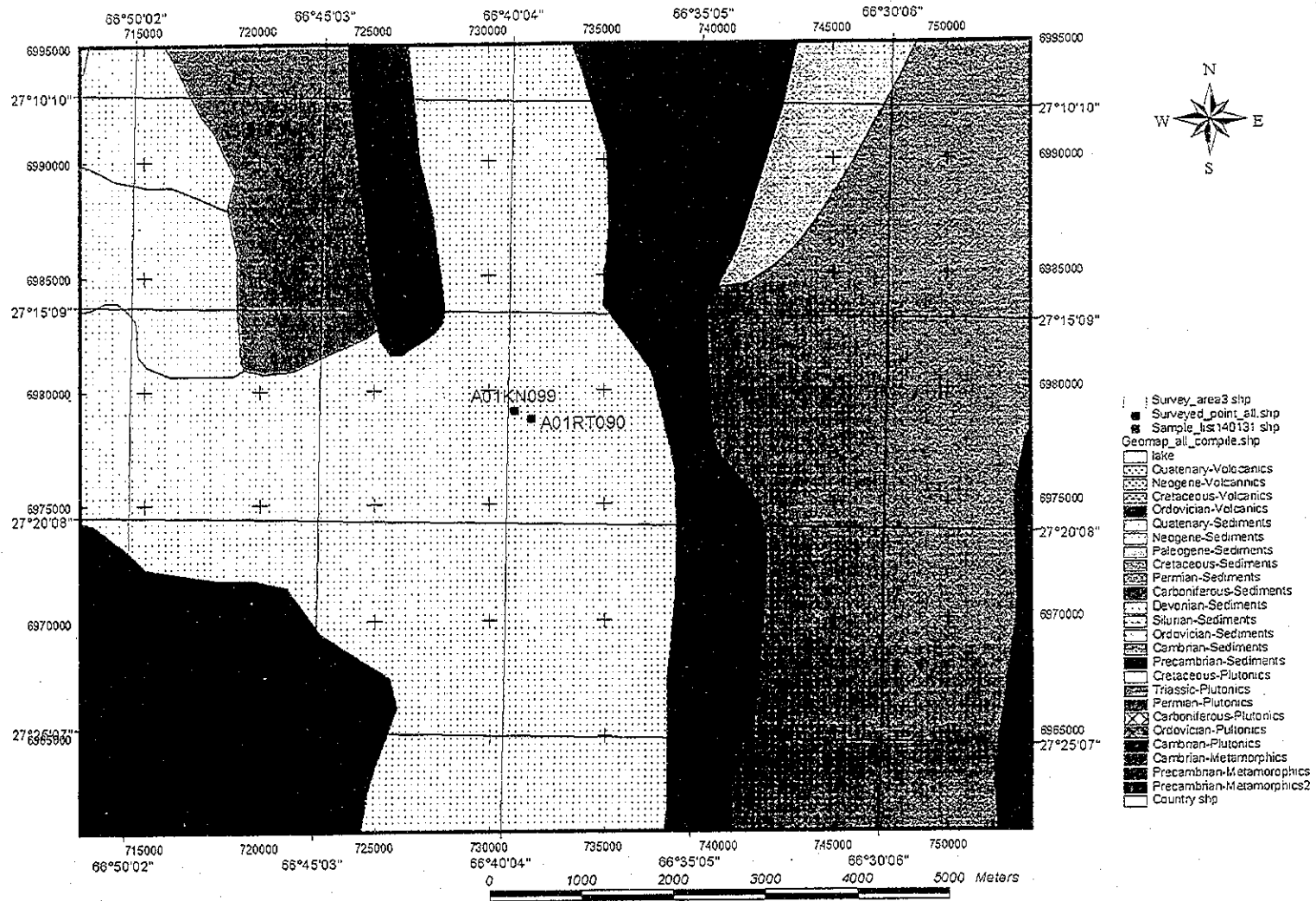


Fig.A-1-16 Sample point of Coiruro mineral showing

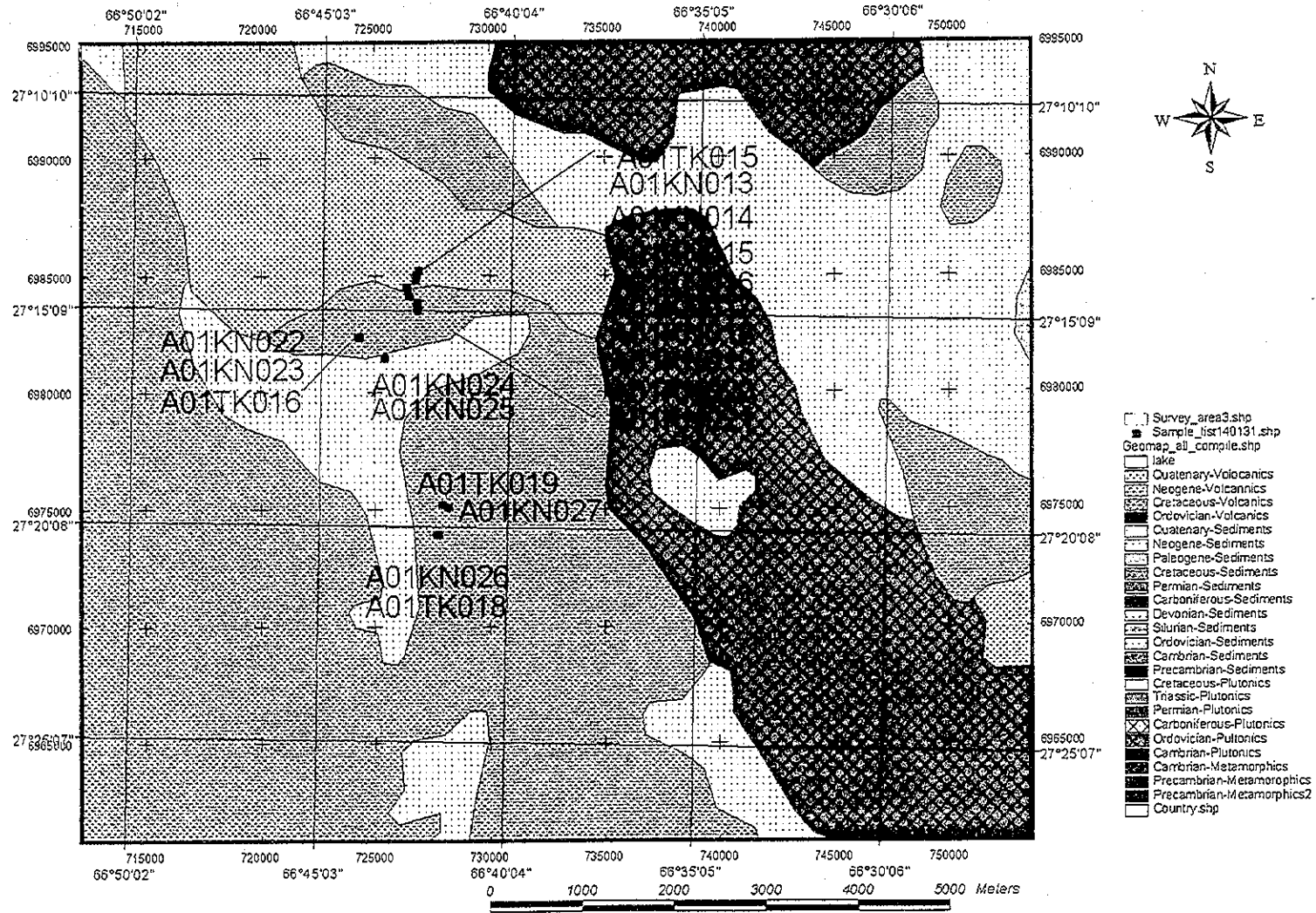


Fig.A-1-17 Sample point of Incachule mineral showing

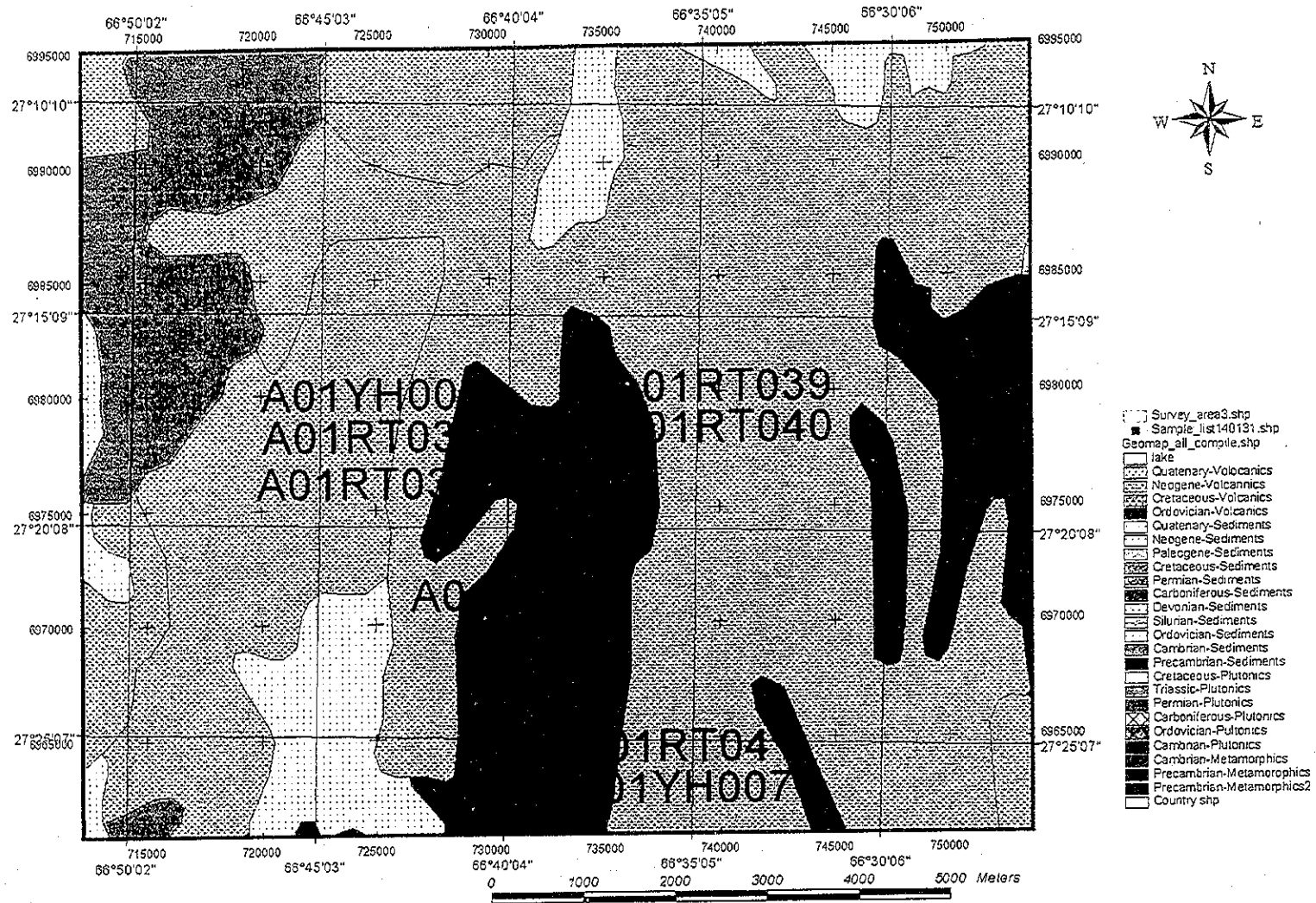


Fig.A-1-18 Sample point of Organullo mineral showing

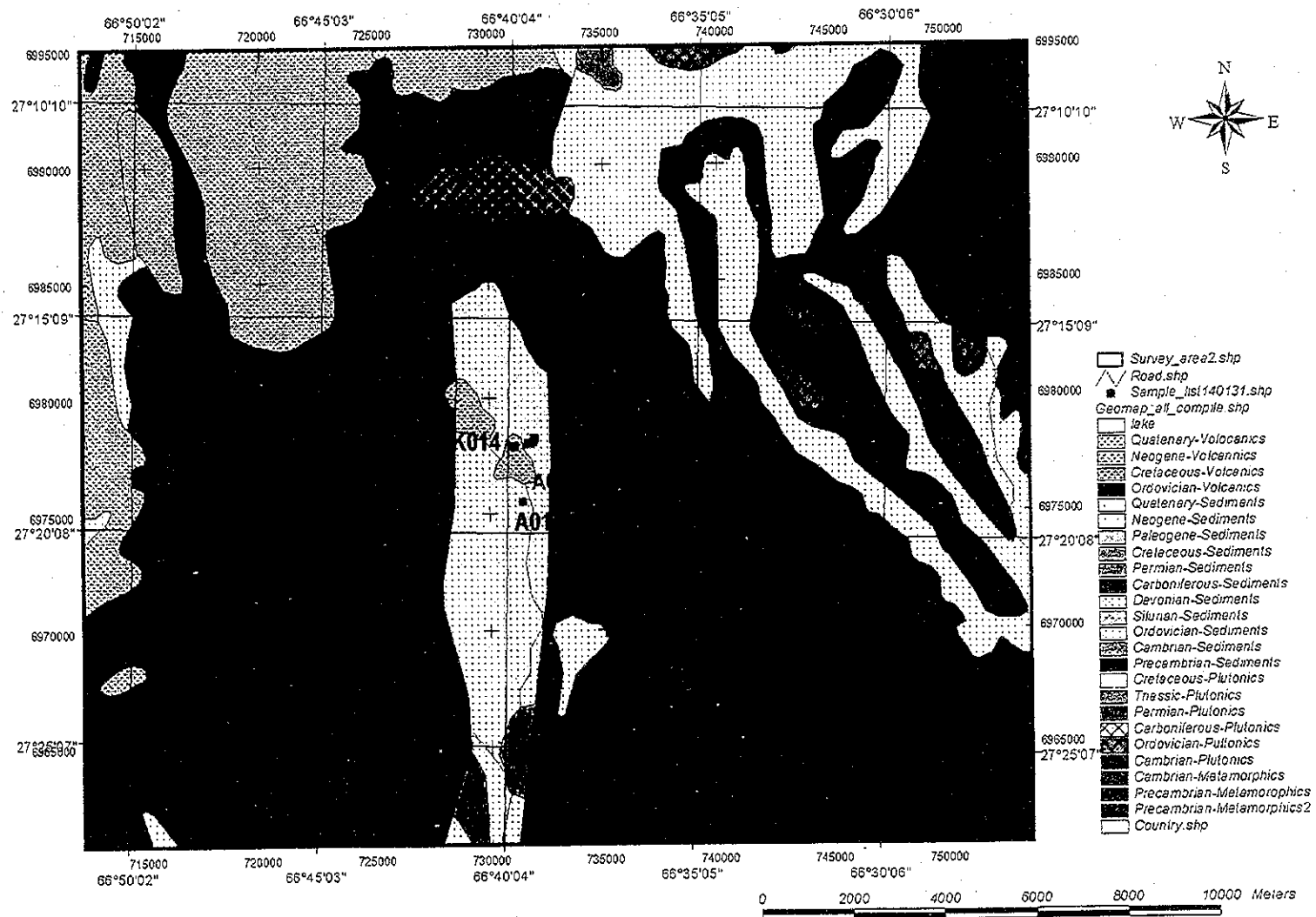


Fig.A-1-19 Sample point of El Acay mineral showing

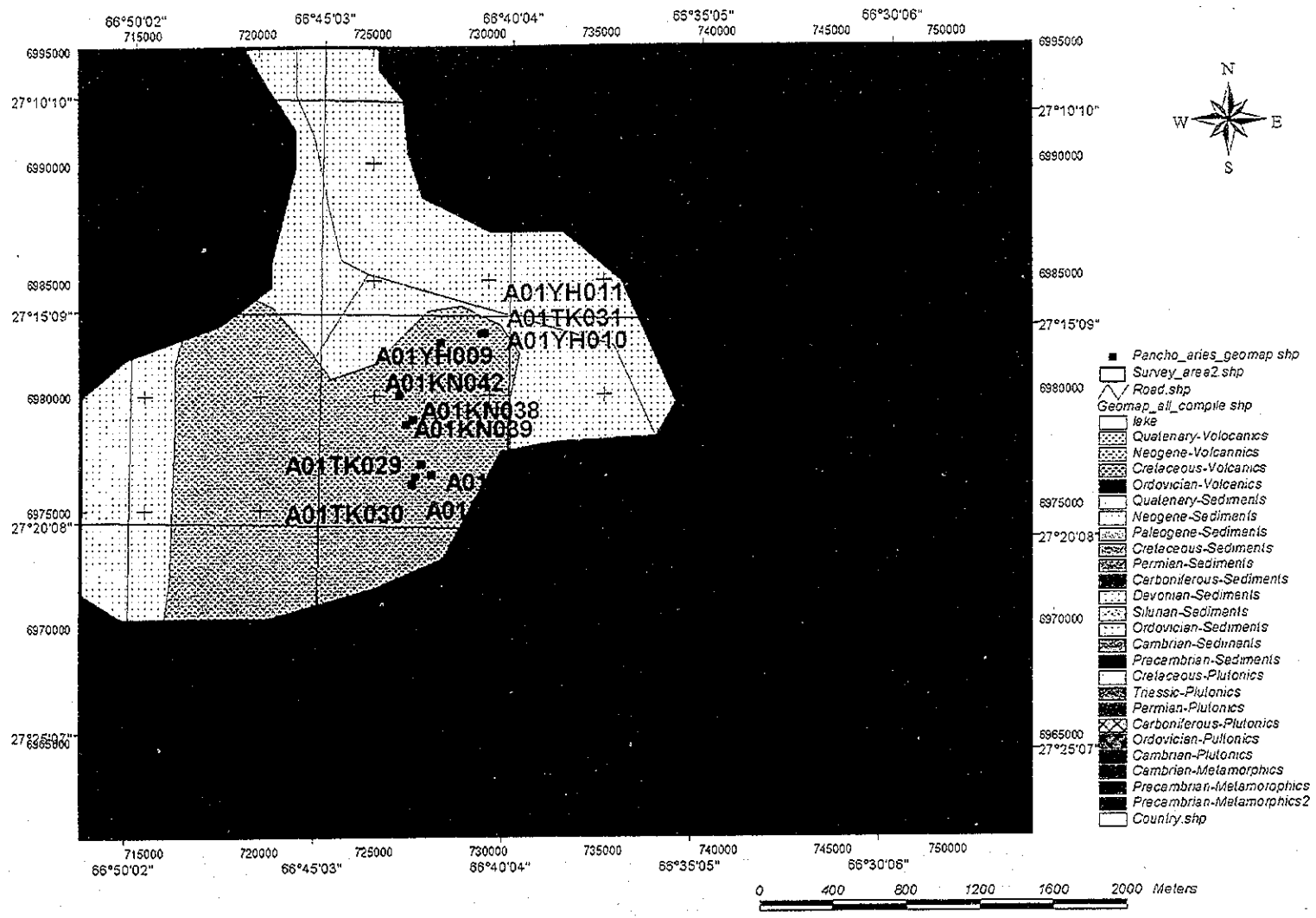


Fig.A-1-20 Sample point of Pancho Arias mineral showing

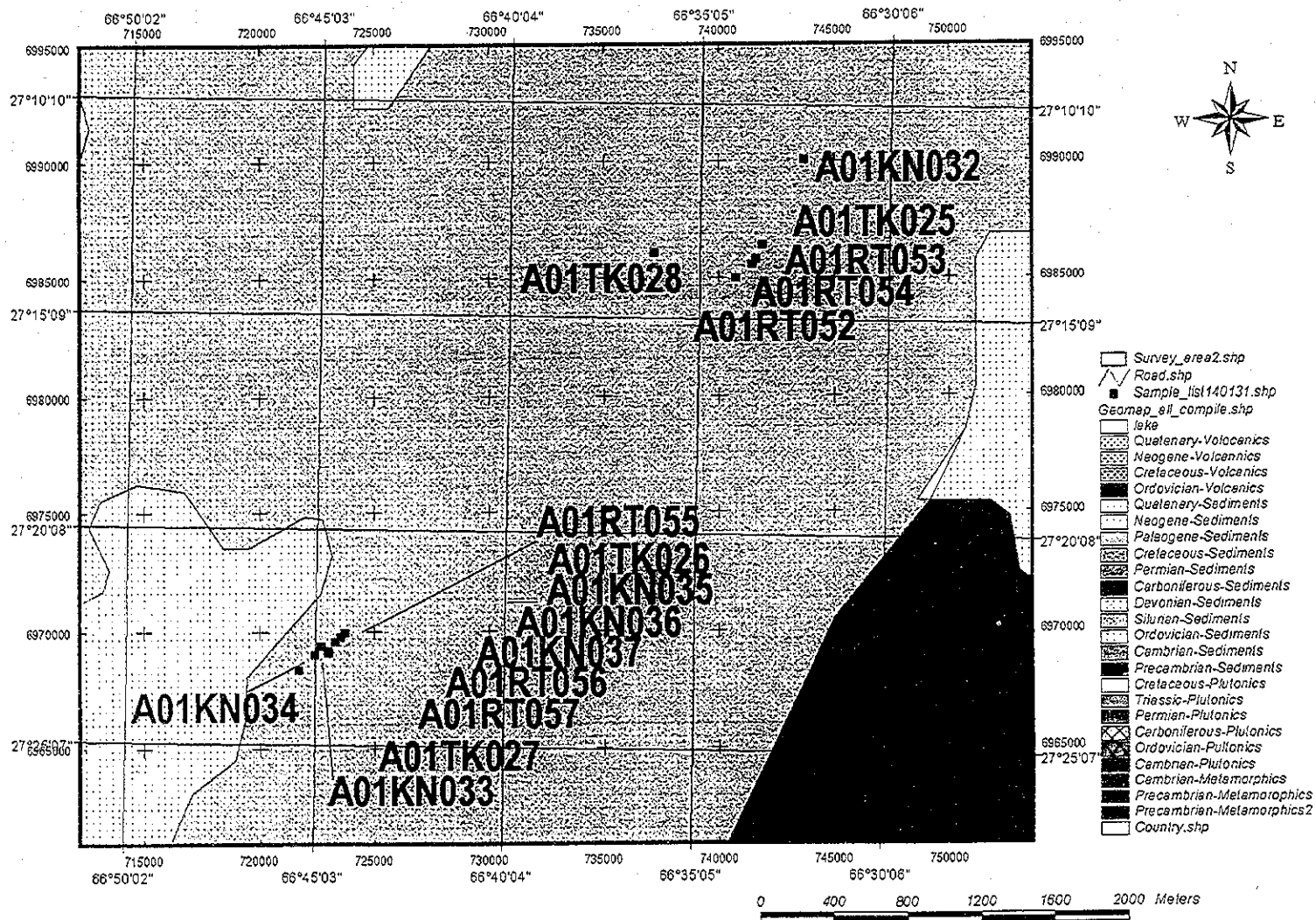


Fig.A-1-21 Sample point of Centenario alteration zone

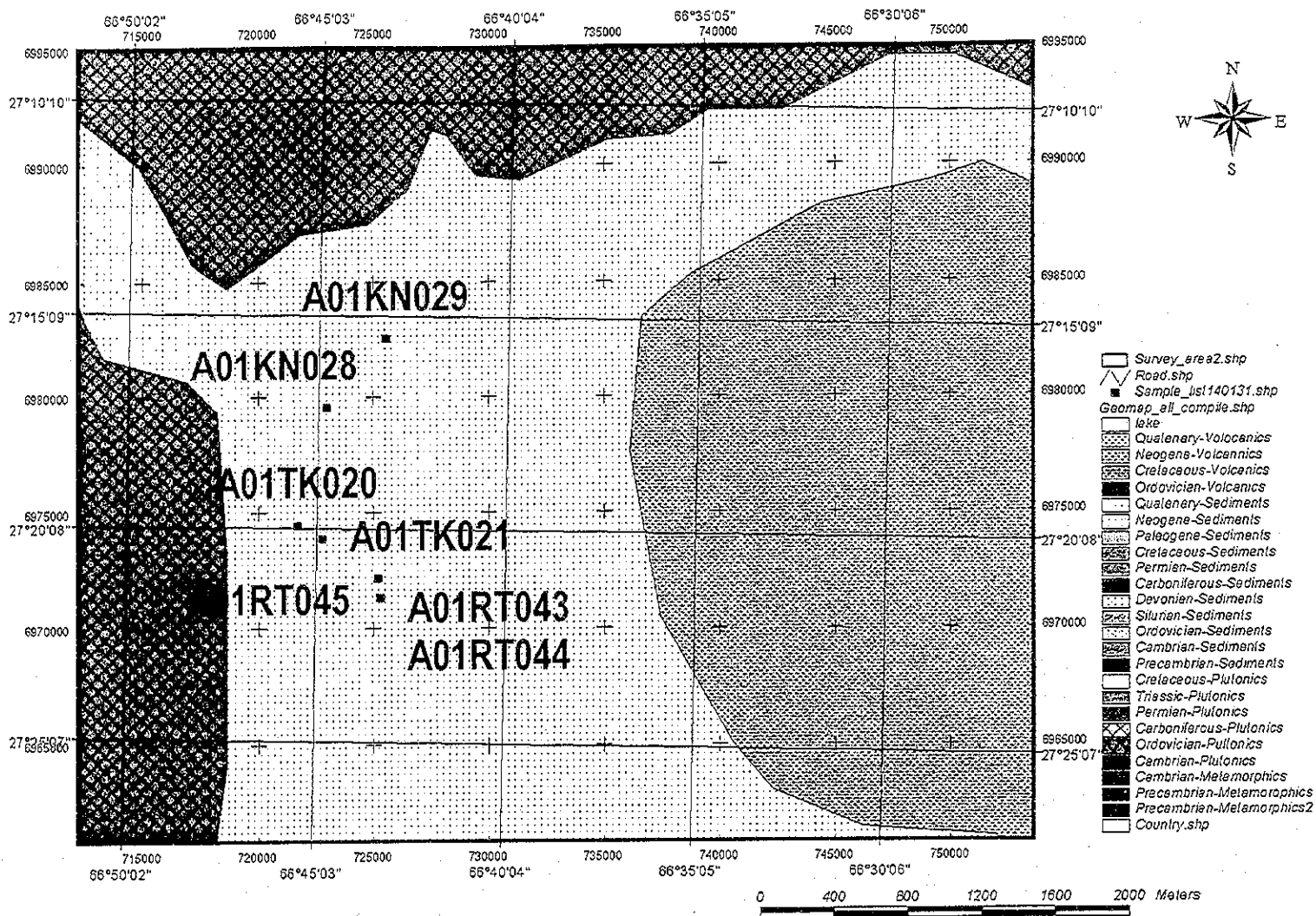


Fig.A-1-22

Sample point of Vicuna Muerta mineral showing