

Reference of Constructed Bridges in Mongolia (1)



Selbe Bridge in UB, Girder end , shoe bed cracks
Constructed 1963, Detailed Design by Japan Grant Aid



Ikh Tenger Bridge in UB, Girder end broken, crack
re-bars exposed Constructed 1994



Enkhtaaivan Railway FO in UB, with cross beam
Completely exposed re-bars, Constructed 1961



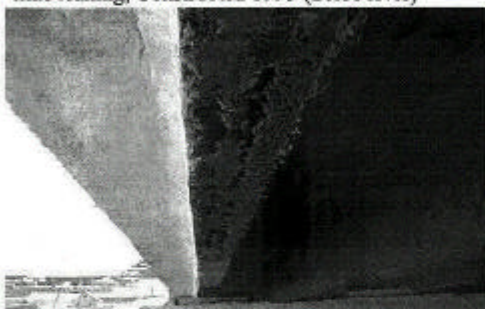
Gurvaljin Railway FO in UB, without cross beam
Girder re-bars exposed, constructed 1989



Dambadarjaa Bridge in UB, Exposed re-bars, slab
lime leaking, Constructed 1995 (Selbe river)



Dambadarjaa Bridge in UB, many vertical cracks
at girders



Dambadarjaa Bridge in UB, Exposed re-bars due to
insufficient casting concrete, Constructed 1990



UB-Darhan 38.7km RC T Girder, L=8.7m, Carriage
width 8.8m Constructed year 1950s by Russian
Width of girder: 40cm

Reference of Existing Bridges in Mongolia (2)



UB-Darhan 91.0km RC T Girder without Cross Beam
Length 18m, Carriageway width 9.5m(Bor nuur river)



UB-Darhan 91.0km Exposed re-bars, slab defects
Insufficient slab. Constructed by Gan guur cont.1999



UB-Darhan 155.7km
Continuous RC T Girder with Cross Beam



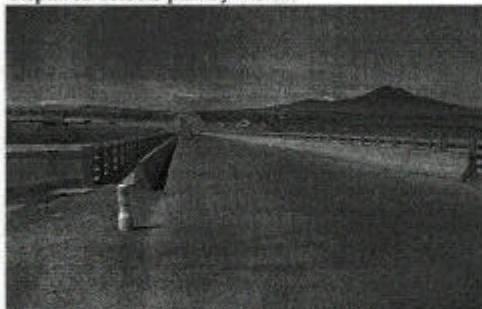
UB-Darhan 155.7km Girder width 50cm
Constructed year 1950s, by Russian



Nalaikh-Erdene RC T Girder without cross beam
Repaired defects part by mortar



Nalaikh-Erdene RC T Girder Vertical cracks



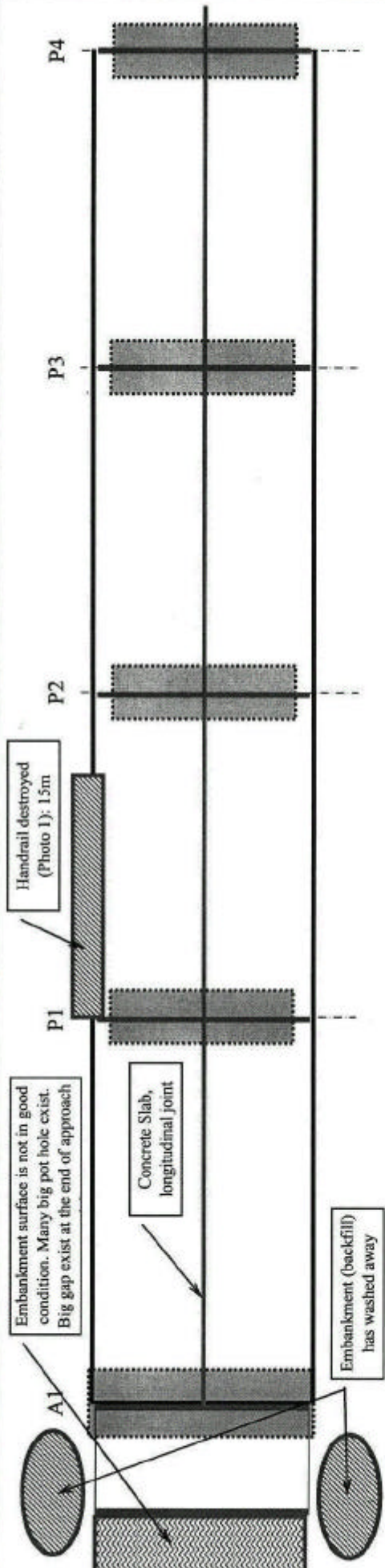



Darhan-Altanbulag Orhon Bridge(1999)
PC Box Girder, Carriageway width 8.0m, 4 Span





Darhan-Altanbulag Orhon Bridge

C.3 Detail Investigation Results of Existing Kherlen Bridge

Inventory Sheet (Existing Kherlen River Bridge 1/12)

Bridge	Kherlen River Bridge	River	Kherlen	km post :	142 + 424	Date	Taken By:	Y. Takai / H. Nakano
Existing Structure	RC-T Girder Bridge							
Sketch Plan A1 - P4								
Comments :	Embankment (backfill) is washed out behind A1. gap exist at the end of approach slab. Approach road is not in good condition, many big pot hole exist. Slab is made by concrete and separated to two parts as shown above in each span. Gap between slabs is 30 to 50mm above the pier and filled with asphaltic material. Handrail is totally destroyed between P1 - P2.							
Photo 1								
Photo 2								
Photo 3								
Comments :	Comments :							

Inventory Sheet (Existing Kherlen River Bridge 2/12)

Bridge		Kherlen River Bridge		River		Kherlen		km post :		142 + 424		Date		4 Dec. 2001		Taken By:		Y. Takai / H. Nakano	
Existing Structure		RC-T Girder Bridge																	
Sketch Plan P4-P8																			
<div><div><div>P4</div><div>P5</div><div>P6</div><div>P7</div><div>P8</div></div><div><div>Handrail destroyed (Photo 1): 8m</div><div>Concrete Slab, longitudinal joint</div><div>Gap has been repaired with asphalt material: 5m Max gap is 30cm. (Photo 2)</div><div>Small gap exist: 2m</div></div></div>																			
Handrail is totally destroyed between P4 - P5. Gap above P7 has been repaired. Maximum repaired gap is nearly 30cm.																			
Comments :																			
Photo 1																			
<div><div></div><div>Photo 2</div></div>																			
<div><div></div><div>Photo 3</div></div>																			
Comments :																			
Comments :																			

Inventory Sheet (Existing Kherlen River Bridge 3/12)

Bridge	Kherlen River Bridge	River	Kherlen	142 x 424	Date	Taken By:	Y. Takai / H. Nakano
Existing Structure	RC-T Girder Bridge			km post :		4 Dec. 2001	
Sketch Plan P8-P12							

P8	P9	P10	P11	P12
<p>Concrete Slab, longitudinal joint</p> <p>Small gap exist: 2m</p>		<p>Small gap exist: 2m</p> <p>Crack exist: 9m</p>	<p>Crack exist and the end of slab is destroyed a little. (photo 1): 9m</p> <p>Small pot hole has been repaired.</p> <p>Re-bar exposed (Photo 3)</p> <p>Steel bar has been taken away: 3m</p>	<p>Crack exist: 5m*2</p> <p>End of Slab is chipped and the area is enlarging. (Photo 2): 4m</p> <p>Gap seems to be increasing. Girder and pier is visible. (Photo 2): 4m</p>

Comments :

Photo 1



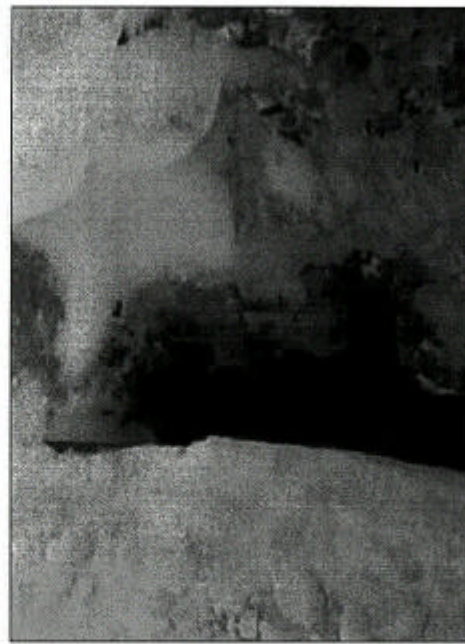
Comments :

Photo 2



Comments :

Photo 3



Comments :

This part is about 150cm wide and 400 long