

C: Supporting table for Chapter 5
in Main report

Health Facilities and Medical Equipment

PART I

Data on Current Situation of Health Facilities

Table of Contents

1	DATA ON CURRENT STATUS OF HEALTH FACILITIES OBTAINED FROM THE FACILITY SURVEY CONDUCTED BY THE JICA STUDY TEAM	C-I-1
1.1	Facilities Covered by the Facility Survey	C-I-1
1.2	Results of the Facility Survey	C-I-3
1.3	Drawing of major Health Facilities	C-I-44
1.4	Infrastructure and Building of Private Hospitals	C-I-60
2	INDIA STANDARDS:RECOMMENDATIONS FOR BASIC REQUIREMENTS OF General Hospital Buildings	C-I-61

List of Table

Table 1-1	Facilities Covered by the Facility Survey	C-I-1
Table 1-2	Infrastructure and Building (District Hospital, CHC, and PHC) DAMOH	C-I-3
Table 1-3	General Characteristics of CHC and PHC DAMOH	C-I-8
Table 1-4	Infrastructure of SHC DAMOH	C-I-9
Table 1-5	General Characteristics of SHC DAMOH	C-I-10
Table 1-6	Infrastructure and Building (District Hospital, CHC, and PHC) TIKAMGARH	C-I-11
Table 1-7	General Characteristics of CHC and PHC TIKAMGARH	C-I-16
Table 1-8	Infrastructure of SHC TIKAMGARH	C-I-17
Table 1-9	General Characteristics of SHC TIKAMGARH	C-I-18
Table 1-10	Infrastructure and Building (District Hospital, CHC, and PHC) SAGAR	C-I-19
Table 1-11	General Characteristics of CHC and PHC SAGAR	C-I-24
Table 1-12	Infrastructure of SHC SAGAR	C-I-25
Table 1-13	General Characteristics of SHC SAGAR	C-I-26
Table 1-14	Infrastructure and Building (District Hospital, CHC, and PHC) CHHATARPUR	C-I-27
Table 1-15	General Characteristics of CHC and PHC CHHATARPUR	C-I-32
Table 1-16	Infrastructure of SHC CHHATARPUR	C-I-33
Table 1-17	General Characteristics of SHC CHHATARPUR	C-I-34
Table 1-18	Infrastructure and Building (District Hospital, CHC, and PHC) PANNA	C-I-35
Table 1-19	General Characteristics of CHC and PHC PANNA	C-I-40
Table 1-20	Infrastructure of SHC PANNA	C-I-41
Table 1-21	General Characteristics of SHC DAMOH	C-I-42
Table 1-22	General Characteristics of Training Centres	C-I-43
Table 1-23	Infrastructure and Building of Private Hospital	C-I-60
Table 2-1	Provisions for various floor area	C-I-61
Table 2-2	Provisions for various floor areas in ward unit and ward ancillaries Provisions for various floor areas in delivery suite unit	C-I-62

	DISTRICT					
	CHHATARPUR		PANNA		SAGAR	
	Selected Facility	Replaced Facility	Selected Facility	Replaced Facility	Selected Facility	Replaced Facility
Hospital	(3) District Hospital		(5) District Hospital		(4) District Hospital	
CHC	(36) Badamalhara		(511) Amanganj		(48) DevriCHC	
B-PHC	(34) Laudi		(531) Devendra Nagar		(42) RahatGarh B-PHC	
S-PHC	(325) Maharajpur (362) Ramtoria	(333) KhadehaS-PHC (Extra)	(5527) Simaria (521) Dharampura	(513) SaiehaS-PHC(Extra)	(S511) RajwansS-PHC (482) MaharajpurS-PHC	(S5121) Barodiya Kalan S-PHC (Extra)
SHC	(3146) Banganya (No staff, no build.) (3332) KhadehaSHC (Not existing) (3512) Nandgaon (No building) (3652) Weeron (3864) Baandri (No staff, no build.)	(3621) RamtoriaSHC (3421) MunderiSHC (3892) GadehaSHC (3831) BasariSHC (3891) GhuraSHC (Absent)	(5124) Paderi (5232) Banheri (5427) Khamaria (No build.) (5531) Heerapur (5536) Birsinhpur (No build.)	(5511) Murach (5351) Majhgawan (5214) Bagwar	(4325) Talchiri SHC (4929) Serkhadi (Not existing) (4919) Singpur (Bad access) (4424) Berkheri Kalan (No building) (4522) Nanwan SHC (Absent)	(4326) Pararai SHC (4831) Barkoti SHC (4423) ChullaSHC (4516) Khatora Kalan SHC
	Female Health Worker Training Centre Dr.Choubey Nursing Home		District Training Centre (Under Construction by UNFPA)		General Nursing Training Centre	

1.2 Results of the Facility Survey

Table 1-2 Infrastructure and Building 1 (District Hospital, CHC and PHC)

DAMOH

Type	Name of Facility	Ownership			Age of Building years	Age of Renovation years	Structure	No. of Floors	Site area spm	Floor area spm	No. of Quarters for								Remarks		
		Own	Rented	Donated/Rent free							Doctor	Compounder	Nurse	Pharmacies	X-ray Technician	Lab Technician	Drivers	Attendant			
	{1} District Hospital	MP GOV	-	-	47 years	5 years	RC*+ Pucca**	2	28,000	8,360	○	-	○	○	-	○	○	-	○	-	Building cost: Rs.25,000,000 175 beds include.50 RKS beds
CHC	{11} Hatta	MP GOV	-	-	20	13	Pucca	1	9,600	860	○	-	○	-	-	○	-	-	-	-	30 beds
B-PHC	{12} Tendukuhera	MP GOV	-	-	75	every year	Pucca Kutch***	1 1	20,000	3,500	○	-	○	○	-	○	○	-	-	-	6 beds
B-PHC	{14} Hindoria	MP GOV	-	-	30	4 months	Pucca	1	16,000	/	○	-	-	○	○	○	○	-	-	-	6 beds
B-PHC	{16} Patharia	MP GOV	-	-	59	1	Pucca	1	6,000	2,000	○	○	○	○	○	○	-	-	-	-	6 beds
S-PHC	{114} Mariyado	MP GOV	-	-	4	1	Pucca	1	7,000	/	○	○	-	-	-	-	-	-	-	-	6 beds
S-PHC	{161} Kumhari	MP GOV	-	-	3	/	Pucca	1	6,000	/	○	○	/	/	/	/	/	/	/	/	6 beds
S-PHC	{153} Bansakala	MP GOV	-	-	3	/	Pucca	2	6,000	2,000	○	○	-	-	-	-	-	-	-	-	12 beds
S-PHC	{113} Raneh	MP GOV	-	-	40	24	Pucca	1	/	/	-	-	-	-	-	-	-	-	-	-	Too old for use New building by PWD.
S-PHC	{141} Abhana	MP GOV	-	-	1	/	Pucca	1	12,000	300	○	-	○	-	-	-	-	-	-	-	Newly built, no bed

*RC: Reinforced concrete structure

**Pucca: Reinforced concrete slab+Masonry wall

***Kutch:Roof with Wooden structure

○ : Available

- : Inavailable

/ : No data

S-13

Infrastructure and Building 2 (District Hospital, CHC and PHC)

DAMOH

C-14

Type	Name of Facility	Telephone	Personal Computer	NIC Terminal	E-mail	Water supply source					Water supply Installation			Electricity			Power supply			Power cut		Generator		Remarks	
						Piped	Bore Well	Hand Pump	Tube Well	None	Tank/Pump	Capacity	Condition	All parts	Some Parts	None	Continuous	Fails	Occasionally	In summer	Regularly	No supply	Yes		No
	{1} District Hospital	○	-	-	-	○	○	○	○	-	○	○	○	○	-	-	○	-	-	-	-	-	○	-	Tube well not in use
CHC	{11} Hatta	○	-	-	-	○	-	○	○	-	○	○	○	○	-	-	○	-	-	-	○	-	-	○	
B-PHC	{12} Tendukhera	-	-	-	-	-	-	○	-	-	-	-	○	-	-	○	-	-	-	○	-	-	-	-	
B-PHC	{14} Hindoria	-	-	-	-	○	-	○	-	-	-	-	○	-	-	-	-	○	-	○	-	-	-	○	
B-PHC	{16} Patharia	-	-	-	-	-	-	-	-	○	-	-	-	-	-	-	-	○	-	○	-	-	-	○	
S-PHC	{114} Mariyado	-	-	-	-	-	-	-	-	○	-	-	-	○	-	-	-	○	-	○	-	-	-	-	No water supply
S-PHC	{161} Kumhari	-	-	-	-	○	-	-	-	-	-	-	○	-	-	-	-	-	○	-	-	-	-	-	Water supply not connected
S-PHC	{153} Bansakala	-	-	-	-	-	○	○	-	-	-	-	○	-	-	○	-	-	-	○	-	-	-	○	Bore well not in use
S-PHC	{113} Ranch	-	-	-	-	-	-	-	-	○	-	-	-	○	-	-	-	-	-	-	○	-	-	-	No water supply No toilet
S-PHC	{141} Abhana	-	-	-	-	-	○	-	-	-	○	○	○	○	-	-	○	-	-	○	-	-	-	○	Bore well not in use

Infrastructure and Building 3 (District Hospital, CHC and PHC)

DAMOH

C-15

Type	Name of Facility	Access by			Compound wall		Fencing	Sewerage			Disposal of Waste		Operation							Maintenance		Remarks		
		Rail	Road	Other transport	All around	Partial		None	Septic tank	Soak pit	Connected to Sewerage	Incinerator	Burnt in a pit	No. of OT	OT for Obstetrics	Enough space	Fitted with AC	AC working	Generator for OT	Emergency Light	Regular fumigation		Sterilisation on notice	Condition of painting
	District Hospital	○	○	—	○	—	—	○	—	—	—	○	—	○	○	○	○	—	○	—	F	G		
CHC	(11) Hatta	—	○	—	—	○	—	○	—	—	—	○	1	1	○	—	—	—	○	○	—	F	G	
B-PHC	(12) Tendukhera	—	○	—	—	○	—	○	—	—	—	○	1	1	○	—	—	—	○	—	○	F	G	
B-PHC	(14) Hindoria	—	○	—	—	—	○	○	—	—	—	○	1	1	—	—	—	—	—	○	○	F	G	
B-PHC	(16) Patharia	○	○	—	—	—	○	○	—	—	—	○	1	—	○	—	—	—	—	○	—	F	G	Sewerage disposal is over flowing
S-PHC	(114) Mariyado	—	○	—	—	—	○	○	—	—	—	○	1	—	○	—	—	—	—	○	—	F	G	OT is not in use due to lack of equipment
S-PHC	(181) Kumhari	—	○	—	—	—	○	—	—	—	—	○	1	—	○	—	—	—	—	—	○	F	G	
S-PHC	(153) Bansakala	—	○	—	—	—	○	—	—	—	—	○	1	—	○	—	—	—	—	○	—	F	G	Sewerage disposal running into pond
S-PHC	(113) Raneh	—	○	—	—	—	○	—	—	—	—	○	—	—	—	—	—	—	—	—	—	P	P	
S-PHC	(141) Abhana	—	○	—	—	—	○	—	○	—	—	○	1	1	○	—	—	—	○	—	—	F	F	

G: good F: fair P: poor

Infrastructure and Building 4 (District Hospital, CHC and PHC)

DAMO H

C-16

Type	Name of Facility	Cleanliness						Close to Hospital				Maternity wards		Out-patient Department in Gynecology/Obstetrical					Accommodation for patients' family		Remarks
		OPD	OT	Rooms	Wards	Premises	Toilets	Garbage dump	Cattle shed	Stagnant pool	Polution from Industry	No. of wards	No. of beds	Adequate space	Privacy in Examination	Facility for Counseling	Separate Toilet	Sterilizing instruments	Facility for stay	Cooking facility	
	District Hospital	F	F	F	F	F	P	-	-	-	-	4	30	○	○	○	-	○	-	-	
CHC	[11] Hatta	F	F	F	F	F	P	-	-	-	-	1	30	○	○	○	○	○	○	○	
B-PHC	[12] Tendukuhera	F	F	F	F	F	P	-	-	-	-	2	4	○	○	○	○	○	○	○	
B-PHC	[14] Hindoria	F	F	F	F	F	P	-	-	-	-	2	5	○	○	-	-	○	-	-	
B-PHC	[16] Patharia	F	F	F	F	F	P	-	-	-	-	2	6	○	-	○	-	-	-	-	
S-PHC	[114] Mariyado	F	F	F	F	F	P	-	-	-	-	1	2	-	-	-	-	○	-	-	
S-PHC	[161] Kumhari	F	F	F	F	F	P	-	-	-	-	3	6	○	○	-	-	-	-	-	
S-PHC	[153] Bansakala	F	F	F	F	F	F	-	-	-	-	1	4	○	○	○	-	○	-	-	
S-PHC	[113] Raneh	P	-	P	-	F	P	-	-	-	-	-	-	-	○	○	-	-	-	-	
S-PHC	[141] Abhana	F	F	F	F	F	P	-	-	-	-	1	-	-	-	-	○	○	-	-	No running water in toilet

Infrastructure and Building 5 (District Hospital, CHC and PHC)

DAMO

Type	Name of Facility	Independent staff accomodation					In building staff accomodation					Remarks
		Doctor	Operator	Nurse	Others	Compounder	Doctor	Operator	Nurse	Others	Compounder	
	District Hospital	○	/	○	/	/	○	/	/	/	/	Other residence provided by PWD
CHC	(11) Hatta	○	-	-	-	-	-	-	-	-	-	
B-PHC	(12) Tendukhera	○	-	-	-	-	-	-	-	-	-	
B-PHC	(14) Hindoria	○	○	○	-	-	-	-	-	-	-	
B-PHC	(16) Patharia	○	-	○	-	-	-	-	-	-	-	
S-PHC	(114) Mariyado	○	-	-	-	○	-	-	-	-	-	
S-PHC	(161) Kumhari	○	-	-	-	-	-	-	-	-	-	
S-PHC	(153) Bansakala	○	-	-	-	-	-	-	-	-	-	
S-PHC	(113) Raneh	-	-	-	-	-	-	-	-	-	-	
S-PHC	(141) Abhana	○	-	○	-	-	-	-	-	-	-	

C-17

Table 1-3 General Characteristics of CHC and PHCDAMOH

Type	Name of Facility	Age of PHC	No. of sub-centres attached to PHC	No. of Villages covered by PHC	Population covered by PHC	Distance from SHC/RH	Distance from nearest SHC	Distance from farthest SHC	No. of villages accessible	Remarks
CHC	[11] Hatta	20 years	21	167	132,000	38 km	3 km	35 km	65	
B-PHC	[12] Tendukuhera	75 years	23	192	127,000	55 km	3 km	40km	192	
B-PHC	[14] Hindoria	30	30	235	176,000	16	8	50	8	
B-PHC	[16] Patharia	59	23	146	146,000	30	5	30	70	
S-PHC	[114] Mariyado	4	7	48	33,000	20	8	24	30	
S-PHC	[161] Kumhari	3	6	50	35,000	21	3	26	44	
S-PHC	[153] Bansakala	3	6	6	20,000	4	5	10	6	Previously SHC
S-PHC	[113] Raneh	40	3	30	75,000	16	12	16	30	
S-PHC	[141] Abhana	1	5	14	6,100	18	1.5	7	19	

Table 1-4 Infrastructure of SHC

DAMOH

Type	Name of Facility	Ownership			Age of Building	Age of Renovation	Structure	No. of Floors	Site area sqm	Floor area sqm	No. of SHC rms	Water Supply		Electricity		Sewerage		Disposal of Waste		Remarks
		Own	Rented	Donated/free								Borewell	Hand-pump	Supply	None	Soak-pit	None	Incinerator	Burnt in a pit	
SHC	[1721] Bakayan	—	○	—	35 years	—	Kutcha**	1	—	40	1	—	○	○	—	○	—	—	○	In Gram Panchayat building
	[1322] Banvar	○	—	—	15	—	Kutcha	1	60	48	1	○	—	○	—	—	○	—	○	Well not on site No toilet
	[1343] Bhajia	MP GOV	—	—	4	—	Kutcha	1	400	70	5	—	○	—	○	○	—	—	○	
	[1635] Bhata	—	○	—	/	—	Kutcha	1	100	28	1	—	○	○	—	○	—	—	○	Rent paid by ANM. No toilet
	[1121] Kanti	—	○	—	15	—	Pucca*	2	/	20	1	—	○	○	—	○	—	—	○	No toilet Rented by ANM.
	[1144] Pali	—	○	—	10	—	Kutcha	1	50	36	1	—	○	○	—	—	○	—	○	No toilet Rented by ANM. Hand pump not on site
	[1431] Bansa	—	○	—	21	—	Kutcha	1	—	15	1	—	○	○	—	○	—	—	○	Owned by Gram Panchayat
	[1412] Abhana	—	○	—	/	—	Kutcha	1	/	/	1	—	○	○	—	○	—	—	○	No building ANM's residence
	[1241] Tejarh	○	—	—	35	—	Kutcha	1	—	26	1	—	○	○	—	○	—	—	○	
	[1211] Sarra	○	—	—	40~50	—	Kutcha	1	—	18	1	—	○	○	—	—	○	—	○	Hand pump not on site
	[1331] Nohta	○	—	—	30	3	Kutcha	1	100	65	2	⊙	—	○	—	—	○	—	○	⊙ : Water from near-by tube well With toilet
	[1341] Singrampur	MP GOV	—	—	35	8	Kutcha	1	200	60	2	○	—	—	○	—	—	—	○	With toilet

*Pucca: Reinforced concrete slab +Masonry wall

**Kutcha: Roof with wooden structure

Table 1-5 General Characteristics of SHC

DAMOHO

Type	Name of Facility	Access by			Compound wall			No. of Villages covered by SHC	Population covered by SHC	Distance from nearest PHC	Distance from farthest PHC	No. of Villages accessible	Remarks
		Rail	Road	Other transport	All around	Partial	None						
SHC	[1721] Bakayan	-	○	-	-	-	○	6~7	10,000	8 km	30 km	6	Owned by ANM.
	[1322] Banvar	-	○	-	-	-	○	10	6,000	12	48	3	
	[1343] Bhajia	-	○	-	-	-	○	8	3,750	33	80km from D-Hospital	5	
	[1635] Bhata	-	○	-	-	-	○	4	3,750	31	35km from D-Hospital	4	Excavation work for new SHC building by Gram Panchayat
	[1121] Kanti	-	○	-	-	-	○	6	5,000	14km from CHC	50km from D-Hospital	4	Excavation work for new SHC building
	[1144] Pali	-	○	-	-	-	○	5	3,000	8	18	3	
	[1431] Bansa	-	○	-	-	-	○	3~4	5,000	10	40	3	
	[1412] Abhana	-	○	-	-	○	-	5	6,000	1.5	-	5	ANM's Residence
	[1241] Tejgarh	-	○	-	-	-	○	10	6,000	22	-	10	
	[1211] Sarra	-	○	-	-	-	○	11	5,000	45	/	8	
	[1331] Nohta	-	○	-	-	○	-	1	6,000	18	23km from D-Hospital	1	
	[1341] Singrampur	-	○	-	-	-	○	3	4,500	13	52km from D-Hospital	3	Renovation by ANM.

Table 1-6 Infrastructure and Building 1 (District Hospital, CHC and PHC)

TIKAMGARH

Type	Name of Facility	Ownership			Age of Building	Age of Renovation	Structure	No. of Floors	Site area spm	Floor area spm	No. of Quarters for								Remarks		
		Own	Rented	Donated/Rent free							Doctor	Compounder	Nurse	Pharmacies	X-ray Technician	Lab Technician	Drivers	Attendant			
	[2] District Hospital	MP	—	—	46 years	1 years	RC**	1	60,000	/	/	○	—	○	—	—	—	—	○	○	137 beds 1CMHO Qtr., 5Doctor Qtrs.
CHC	[22] Baldevgarh	MP	—	—	42	—	Pucca	1	4,000	/	/	○	—	○	—	—	—	—	—	—	16 beds
	[24] Niwari	MP	—	○	48	15	Kutch***	1				○	—	○	—	○	○	○	○	○	○
CHC	[21] Palera	MP	—	—	38	1	Pucca	1	/	/	/	○	—	○	—	—	—	—	—	○	30 beds
B-PHC	[26] Badagaon	MP	—	—	43	8	Pucca	1	16,000	/	/	○	—	○	—	—	—	—	—	—	2 beds
S-PHC	[221] Hata	MP	—	—	1	—	Pucca	1	/	/	/	○	—	○	—	—	—	—	—	—	Newly built, not in working condition
S-PHC	[251] Deogada	MP	—	—	4 months	—	Pucca	1	/	/	/	—	—	—	—	—	—	—	—	—	8 beds
S-PHC	[243] Orcha	MP	—	—	48	1	Pucca	1	4,000	350	○	—	○	○	—	—	—	—	—	—	4 beds
S-PHC	[2662] Aston	MP	—	—	15	9	Pucca	1	6,000	300	—	—	—	—	—	—	—	—	—	—	7 beds
S-PHC	[253] Mohangarh	MP	—	○	26	—	Pucca	1	200	130	—	—	—	—	—	—	—	—	—	—	Donated by Gram Panchayat New building to be provided by PWD.
S-PHC	[232] Simra	MP	—	○	26	—	Pucca	1	2,500	110	○	—	○	—	—	—	—	—	—	—	Donated by DANIDA

C-1-11

*RC: Reinforced concrete structure

**Pucca: Reinforced concrete slab+Masonry wall

***Kutch:Roof with Wooden structure

○ : Available

— : Inavailable

/ : No data

Infrastructure and Building 2 (District Hospital, CHC and PHC)

TIKAMGARH

Type	Name of Facility	Telephone	Personal Computer	NIC Terminal	E-mail	Water supply source					Water supply Installation			Electricity			Power supply			Power cut			Generator		Remarks		
						Piped	Bore Well	Hand Pump	Tube Well	None	Tank/Pump	Capacity	Condition	All parts	Some Parts	None	Continuous	Fails	Occasionally	In summer	Regularly	No supply	Yes	No			
	(2) District Hospital	○	-	-	-	○	○	-	○	-	○	○	○	-	-	○	-	-	○	-	-	○	-	-	○	-	2generators 10.5kw, 0.5kw each
CHC	(22) Baldevgarh	-	-	-	-	-	-	○	-	-	-	-	○	-	-	○	-	-	-	○	-	○	-	○	-	Generator 2.5kw Hand pump 200m away	
CHC	(24) Niwari	○	-	-	-	○	-	-	-	-	-	-	○	-	-	○	-	-	-	○	-	○	-	○	-	Generator 6.5kw	
CHC	(21) Palera	-	-	-	-	-	○	-	-	-	-	-	○	-	-	○	-	-	-	○	-	-	-	○	-	Power supply for 6hrs.	
B-PHC	(26) Badagaon	-	-	-	-	-	○	-	○	-	○	○	○	-	-	○	-	-	-	○	-	○	-	○	-		
S-PHC	(221) Hata	-	-	-	-	-	○	-	-	-	-	-	○	-	-	○	-	-	-	○	-	-	-	○	-	Well 200m away	
S-PHC	(251) Deogada	-	-	-	-	-	-	-	-	○	-	-	○	-	-	○	-	-	-	○	-	-	-	○	-	In future, Water supply from adjacent SHC	
S-PHC	(243) Orcha	-	-	-	-	-	-	○	-	-	-	-	○	-	-	○	-	-	-	○	-	-	-	○	-		
S-PHC	(2662) Aston	-	-	-	-	-	-	○	-	-	-	-	○	-	-	○	-	-	-	○	-	-	-	○	-	Water supply from private hand pump	
S-PHC	(253) Mohangarh	-	-	-	-	-	-	-	○	-	-	-	○	-	-	○	-	-	-	○	-	-	-	○	-	No toilet No water supply	
S-PHC	(232) Simra	-	-	-	-	-	-	○	-	-	-	-	-	-	○	-	-	-	-	-	-	-	○	-	-	Hand pump by DANIDA	

C-1-12

Infrastructure and Building 3 (District Hospital, CHC and PHC)

TIKAMGARH

C-1-13

Type	Name of Facility	Access by			Compound wall			Sewerage	Disposal of Waste	Operation Theaters										Maintenance		Remarks	
		Rail	Road	Other transport	All around	Partial	None			Septic tank	Soak pit	Connected to Sewerage	Incinerator	Burnt in a pit	No. of OT	OT for Obstetrics	Enough space	Fitted with AC	AC working	Generator for OT	Emergency Light		Regular fumigation
	[2] District Hospital	-	○	-	-	○	-	○	-	-	○	1	-	○	○	○	○	○	○	-	F	F	OT also used for Gynae
CHC	[22] Baldevgarh	-	○	-	-	○	-	-	-	○	1	-	-	-	-	○	-	-	○	F	F		
CHC	[24] Niwari	-	○	-	○	-	-	○	-	○	1	-	○	-	-	○	-	○	-	F	F	Proposal for Incinerator Maintenance by PWD	
CHC	[21] Palera	-	○	-	-	○	-	○	-	○	1	-	○	-	-	○	○	○	-	F	F	Emergency light not working	
B-PHC	[26] Badagaon	-	○	-	-	○	-	○	-	○	1	-	○	-	-	○	-	○	-	F	G		
S-PHC	[221] Hata	-	○	-	-	-	○	○	-	○	1	-	○	-	-	-	-	-	-	F	G		
S-PHC	[251] Deogada	-	○	-	-	-	○	○	-	○	1	-	○	-	-	-	-	○	-	F	G		
S-PHC	[243] Orcha	○	○	-	-	-	○	○	-	○	-	-	-	-	-	-	-	-	-	F	G		
S-PHC	[2662] Aston	-	○	-	-	-	○	○	-	○	1	-	-	-	-	-	-	-	-	F	G		
S-PHC	[253] Mohangarh	-	○	-	-	-	○	-	-	○	-	-	-	-	-	-	-	-	-	F	G	No toilet	
S-PHC	[232] Simra	-	○	-	-	-	○	○	-	○	-	-	-	-	-	-	-	-	-	F	F		

G: good F: fair P: poor

Infrastructure and Building 5 (District Hospital, CHC and PHC)

TIKAMGARH

Type	Name of Facility	Independent staff accomodation					In building staff accomodation					
		Doctor	Operator	Nurse	Others	Compounder	Doctor	Operator	Nurse	Others	Compounder	
	[2] District Hospital	○	—	○	—	—	○	—	○	—	—	Rs4,300,000 from construction works proposed by central Government (11th Plan)
CHC	[22] Baldevgarh	○	—	○	—	—	—	—	—	—	—	
CHC	[24] Niwari	○	—	○	—	—	—	—	—	—	—	Rs150,000 allocated for water supply RCH budget allocated for renovation
CHC	[21] Palera	○	—	○	—	—	—	—	—	—	—	New building for OT,labour room,postpartum wards,toilets
B-PHC	[26] Badagaon	○	—	—	—	—	—	—	—	—	—	
S-PHC	[221] Hata	○	—	—	—	—	—	—	—	—	—	
S-PHC	[251] Deogada	—	—	—	—	—	—	—	—	—	—	
S-PHC	[243] Orcha	○	—	—	—	—	—	—	—	—	—	
S-PHC	[2662] Aston	—	—	—	—	—	—	—	—	—	—	OT is not working due to lack of equipment This PHC is only for OPD due to poor facility
S-PHC	[253] Mohangarh	○	—	—	—	—	—	—	—	—	—	New building is handovered. Water supply,electricity and sewerage line to be provided for new building Staff accomodation in new building
S-PHC	[232] Simra	—	—	—	—	—	—	—	—	—	—	Moved from Gram Panchayat building 5 years ago to SHC building donated by DANIDA

C-115

Table 1-7 General Characteristics of CHC and PHC

TIKAMGARH

Type	Name of Facility	Age of PHC	No. of sub-centres attached to PHC	No. of Villages covered by PHC	Population covered by PHC	Distance from SHC/RH	Distance from nearest SHC	Distance from farthest SHC	No. of villages accessible	Remarks
CHC	[22] Baldevgarh	42 years	27	162	189,000	27 km from D.Hospital	10 km	25 km	156	
CHC	[24] Niwari	48	25	142	138,000	14	5	/	25	
CHC	[21] Palera	38	25	135	160,000	65 km from D.Hospital	8	22	96	
B-PHC	[26] Badagaon	43 years	24	155	120,000	30 km from D.Hospital	5 km	/	65	
S-PHC	[221] Hata	/	/	/	/	/	/	/	/	
S-PHC	[251] Deogada	4 months	4	50	52,000	25 km from D.Hospital	6	15 km	25	
S-PHC	[243] Orcha	38 years	7	38	20,000	35	8	45	4	
S-PHC	[2662] Aston	15	3	26	23,000	18 km from D.Hospital	/	10	12	
S-PHC	[253] Mohangarh	26	11	42	50,000	72	4	17	35	
S-PHC	[232] Simra	26	/	/	30,000	70 km from D.Hospital	15 km from CHC	7 km from PHC	/	

Table 1-8 Infrastructure of SHC

TIKAMGARH

Type	Name of Facility	Ownership			Age of Building years	Age of Renovati years	Structure	No. of Floors	Site area spm	Floor area spm	No. of SHC rms	Water Supply		Electricity		Sewerage		Disposal of Waste		Remarks
		Own	Rented	Donated/free								Borewell	Hand-pump	Supply	None	Soak-pit	None	Incinerator	Burnt in a pit	
SHC	[2122] Simra Khurd	MP GOV	—	○	15	8	Pucca*	1	/	110	3	—	○	○	—	—	○	—	○	Hand pump 500 m
	[2231] Dewarda	MP GOV	—	○	16	—	Pucca	1	500	50	3	—	○	—	○	○	—	—	○	Hand pump 500 m Septic tank
	[2321] Simra	MP GOV	—	○	25	—	Pucca	1	250	110	2	—	○	—	○	○	—	—	○	Hand pump Septic tank
	[2351] Gailwara	MP GOV	—	○	12	—	Pucca	1	/	25	3	—	○	○	—	○	—	—	○	Adjacent hand pump Septic tank
	[2431] Orcha	MP GOV	—	○	25	—	Pucca	1	300	70	2	—	○	○	—	○	—	—	○	Hand pump Septic tank
	[2453] Karguan	MP GOV	—	○	16	—	Pucca	1	120	72	2	—	○	○	—	○	—	—	○	Hand pump
	[2523] Satguan	MP GOV	—	○	25	—	Pucca	1	130	96	2	—	○	—	○	○	—	—	○	Hand pump not in use
	[2614] Darguan	MP GOV	—	○	15	—	Pucca	1	/	/	2	—	○	○	—	○	—	—	○	Hand pump
	[2651] Kundleshwar	MP GOV	—	○	30	—	Pucca	1	360	110	1	—	○	○	—	○	—	—	○	Hand pump Septic tank
	[2211] Landwari	MP GOV	—	○	/	—	Pucca	1	200	/	3	—	○	○	—	—	○	—	○	Adjacent hand pump
	[2413] Thona	MP GOV	—	○	30	12	Pucca	1	/	70	3	—	○	—	○	○	—	—	○	Hand pump Septic tank
	[2551] Chandera	MP GOV	—	○	12	—	Pucca	1	900	/	3	—	○	○	—	—	○	—	○	Hand pump on site
	[2652] Khiriya	MP GOV	—	○	31	—	Pucca	1	400	130	3	—	—	—	○	○	—	—	○	Soak pit Bore well not in use
	[2662] Aston	MP GOV	—	○	50	—	Pucca	1	900	50	2	—	—	—	○	—	○	—	○	

*Pucca: Reinforced concrete slab +Masonry wall

Table 1-9 General Characteristics of SHC

TIKAMGARH

Type	Name of Facility	Access by			Compound wall Fencing			No. of Villages covered by SHC	Population covered by SHC	Distance from nearest PHC	Distance from farthest PHC	No. of Villages accessible	Remarks
		Rail	Road	Other transport	All around	Partial	None						
SHC	[2122] Simra Khurd	-	○	-	-	-	○	6	5,500	16 km	/	4	Donated by DANIDA
	[2231] Dewarda	-	○	-	-	○	-	6	6,000	15	/	/	Donated by DANIDA
	[2321] Simra	-	○	-	-	-	○	6	7,000	7	15 km	5	Donated by DANIDA
	[2351] Gailwara	-	○	-	-	-	○	6	7,000	16	/	5	Donated by DANIDA Construct cost Rs.120,000
	[2431] Orcha	○	○	-	-	-	○	6	6,000	0	32	6	Donated by DANIDA
	[2453] Karguan	-	○	-	-	○	○	5	6,000	16	35	5	Donated by DANIDA
	[2523] Satguan	-	○	-	-	○	-	2	6,000	10	15	2	Donated by DANIDA
	[2614] Darguan	-	○	-	○	-	-	9	7,000	0	/	7	Donated by DANIDA
	[2651] Kundleshwar	-	○	-	-	-	○	9	10,000	6 km from Distr.Hospital	35	9	Donated by DANIDA
	[2211] Landwari	-	○	-	-	-	○	6	5,500	16	/	5	Donated by DANIDA
	[2413] Thona	-	○	-	-	-	○	4	5,000	13	/	3	Donated by DANIDA
	[2551] Chandera	-	○	-	○	-	-	11	8,000	30	/	4	Donated by DANIDA with Ayurvedic Dispensary
	[2652] Khiriya	-	○	-	-	-	○	7	4,100	18 km from Distr.Hospital	48	3	Donated by DANIDA
	[2662] Aston	-	○	-	-	-	○	7	8,500	0	18 km from Distr.Hospital	4	Donated by DANIDA

Table 1-10 Infrastructure and Building 1 (District Hospital, CHC and PHC)

SAGAR

Type	Name of Facility	Ownership			Age of Building	Age of Renovation	Structure	No. of Floors	Site area spm	Floor area spm	No. of Quarters for							Remarks	
		Own	Rented	Donated/Rent free							Doctor	Compounder	Nurse	Pharmacies	X-ray Technician	Lab Technician	Drivers		Attendant
	[4] District Hospital	MP	-	-	30 years	-	RC*+	1	/	/	○	○	○	-	-	-	-	Main Hospital: 262 beds	
	GOV	-	-	Pucca**		○	○				○	-	-	-	-	-	54 beds		
	Child and Female Hospital	MP	-	-	100	-	Pucca	1	/	/	-	-	-	-	-	-	-	No renovation for 100 years	
	GOV	-	-	Kutchha***		-	-				-	-	-	-	-	-			
CHC	[48] Devri	MP	-	-	13 years	2	RC*+	1	/	/	○	○	○	-	-	-	-	30 beds	
	GOV	-	-	Pucca		○	○				○	-	-	-	-	-			
B-PHC	[42] Rahatgarh	MP	-	-	39	5	Pucca	1	4,000	/	○	○	○	-	-	○	-	○	6 beds
S-PHC	[482] Maharajpur	MP	-	-		2	-				Pucca	1	16,000	/	○	-	○	-	-
S-PHC	[S5121] Barodiya Kalan	MP	-	-	1	-	Pucca	1	13,000	/	○				-	○	-	-	-
S-PHC	Ranjurja	-	-	○		15	-				Pucca	1	2,500	/	○	-	○	-	-

*RC: Reinforced concrete structure

**Pucca: Reinforced concrete slab+Masonry wall

***Kutchha:Roof with Wooden structure

○ : Available

- : Inavailable

/ : No data

Infrastructure and Building 3 (District Hospital, CHC and PHC)

SAGAR

C-1-21

Type	Name of Facility	Access by			Compound wall Fencing			Sewerage			Disposal of Waste		Operation Theaters							Maintenance		Remarks		
		Rail	Road	Other transport	All around	Partial	None	Septic tank	Soak pit	Connected to Sewerage	Incinerator	Burnt in a pit	No. of OT	OT for Obstetrics	Enough space	Fitted with AC	AC working	Generator for OT	Emergency Light	Regular fumigation	Sterilisation on notice		Condition of painting	Condition of floor
	[4] District Hospital	○	○	-	-	-	○	○	-	-	○	2	1	○	○	○	○	○	○	○	○	F	F	
	Child and Female Hospital	○	○	-	-	○	-	-	-	-	○	1	1	○	-	-	-	-	○	-	-	P	P	Public toilet and ambulance: needed
CHC	[48] Devri	-	○	-	-	-	○	○	-	-	○	1	1	-	-	-	○	○	○	-	-	F	F	
B-PHC	[42] Rahatgarh	-	○	-	-	-	○	-	-	-	○	1	-	○	-	-	-	-	-	-	-	P	P	
S-PHC	[482] Maharajpur	-	○	-	○	-	○	-	-	-	○	1	-	○	-	-	-	-	○	-	-	P	G	
S-PHC	[S5121] Barodiya Kalan	-	○	-	-	-	○	○	-	-	○	1	-	○	-	-	-	-	○	-	-	G	G	
S-PHC	Ranjurja	-	○	-	-	-	○	○	-	-	○	-	-	-	-	-	-	-	-	-	-	P	P	

G: good F: fair P: poor

Table 1-11 General Characteristics of CHC and PHC

SAGAR

Type	Name of Facility	Age of PHC	No. of sub-centres attached to PHC	No. of Villages covered by PHC	Population covered by PHC	Distance from SHC/RH	Distance from nearest SHC	Distance from farthest SHC	No. of villages accessible	Remarks
CHC	[48] Devri	13 years	22	218	153,000	13 km	9 km	35km from D-Hospital	150	
B-PHC	[42] Rahatgarh	39	23	196	147,000	35km from D-Hospital	30	46 km	350	
S-PHC	[482] Maharajpur	3	5	43	18,000	13	4 km	32	36	
S-PHC	[S5121] Barodiya Kalan	1	—	22	15,000	12	8	8	20	
S-PHC	Ranjurja	15	4	41	30,000	18	6	10	25	

C-1-24

Table 1-12 Infrastructure of SHC

SAGAR

Type	Name of Facility	Ownership			Age of Building	Age of Renovation	Structure	No. of Floors	Site area spm	Floor area spm	No. of SHC rms	Water Supply		Electricity		Sewerage		Disposal of Waste		Remarks
		Own	Rented	Donated/free								Borewell	Hand-pump	Supply	None	Soak-pit	None	Incinerator	Burnt in a pit	
SHC	[4325] Talchiri	-	-	○	5 years	-	Pucca*	1	/	90	4	-	○	○	-	○	-	-	○	Donated by DANIDA.
	[4326] Pararai	-	-	○	10	-	Pucca	1	160	90	4	-	○	○	-	○	-	-	○	Donated by DANIDA.
	[4831] Barkoti	MP GOV	-	-	3	-	Pucca	1	/	230	9	-	#	○	○	○	-	-	○	Working in PHC building #Hand pump: Far away
	[4423] Chulla	-	-	○	10	2	Pucca	1	/	/	5	-	○	-	○	○	-	-	○	Donated by DANIDA.
	[4516] Khatora Kalan	-	-	○	5	-	Pucca	1	180	96	2	-	○	-	○	○	-	-	○	Donated by DANIDA. with hand pump
	Pithoria	-	-	○	11	-	Pucca	1	120	90	2	-	-	○	-	○	-	-	○	Donated by DANIDA. No water supply

*Pucca: Reinforced concrete slab +Masonry wall

Table 1-13 General Characteristics of SHC

SAGAR

Type	Name of Facility	Access by			Compound wall			No.of Villages covered by SHC	Population covered by SHC	Distance from nearest PHC	Distance from farthest PHC	No.of Villages accessible	Remarks
		Rail	Road	Other transport	All around	Partial	None						
SHC	[4325] Talchiri	-	○	-	-	-	○	7	2,700	25 km	10km from D-Hospital		
	[4326] Pararai	-	○	-	○	-	-	9	10,000	10	35km from D-Hospital	7	
	[4831] Barkoti	-	○	-	-	-	○	10	2,000	8	75	3	
	[4423] Chulla	-	○	-	-	-	○	20	7,000	14	33	14	
	[4516] Khatora Kalan	-	○	-	-	-	○	11	5,500	16	60km from D-Hospital	11	22 km from CHC.
	Pithoria	-	○	-	-	-	○	7	5,000	4	30km from D-Hospital	7	

C-1-26

Table 1-14 Infrastructure and Building 1 (District Hospital, CHC and PHC)

CHHATARPUR

C-1-27

Type	Name of Facility	Ownership			Age of Building	Age of Renovation	Structure	No. of Floors	Site area spm	Floor area spm	No. of Quarters for								Remarks			
		Own	Rented	Donated/Rent free							Doctor	Compounder	Nurse	Pharmacies	X-ray Technician	Lab Technician	Drivers	Attendant				
	[3] District Hospital	MP GOV	-	-	60 years	40 years	Rc*+ Pucca**	2	24,000	/		○	-	○	-	○	○	○	○	○	○	148 beds Covered population: 500,000
CHC	[36] Badamalhara	MP GOV	-	-	41	34	Pucca	1	10,000	/		○	-	○	-	-	-	-	-	-	-	8 beds
B-PHC	[34] Laudi	MP GOV	-	-	50	4	Pucca	1	/	/		○	-	○	-	-	-	-	-	-	○	10 beds
S-PHC	[325] Maharajpur	MP GOV	-	-	50	3	Pucca	1	3,000	/		○	-	○	-	-	-	-	-	-	-	6 beds
S-PHC	[362] Ramtoria	-	○	-	25	18	Pucca	1	/	90		-	-	-	-	-	-	-	-	-	-	Rent paid by MP GOV.
S-PHC	[333] Khadeha	MP GOV	-	-	2	-	Pucca	1	/	/		○	-	○	-	-	-	-	-	-	-	3 beds

*RC: Reinforced concrete structure

**Pucca: Reinforced concrete slab+Masonry wall

***Kutchha:Roof with Wooden structure

○ : Available

- : Inavailable

/ : No data

Infrastructure and Building 3 (District Hospital, CHC and PHC)

CHHATARPUR

Type	Name of Facility	Access by			Compound wall			Sewerage			Disposal of Waste		Operation Theaters							Maintenance		Remarks		
		Rail	Road	Other transport	All around	Partial	None	Septic tank	Soak pit	Connected to Sewerage	Incinerator	Burnt in a pit	No. of OT	OT for Obstetrics	Enough space	Fitted with AC	AC working	Generator for OT	Emergency Light	Regular fumigation	Sterilisation on notice		Condition of painting	Condition of floor
	[3] District Hospital	-	○	-	○	-	-	○	-	-	⊙	-	2	1	○	○	○	○	-	○	○	F	G	⊙: Disposal collected by Municipal Coop.
CHC	[36] Badamalhara	-	○	-	-	○	-	○	-	-	-	○	1	-	-	-	-	-	-	-	-	P	P	OT not in use due to bad building condition
B-PHC	[34] Laudi	-	○	-	○	-	-	○	-	-	-	○	1	-	-	-	-	-	-	○	-	P	F	
S-PHC	[325] Maharajpur	-	○	-	○	○	-	○	-	-	○	-	1	-	○	-	-	-	-	○	-	F	G	
S-PHC	[362] Ramtoria	-	○	-	-	-	○	-	-	-	-	○	-	-	-	-	-	-	-	-	-	P	P	No OT.
S-PHC	[333] Khadeha	-	○	-	○	-	-	○	-	-	-	○	1	-	○	-	-	-	-	○	-	F	G	

G: good F: fair P: poor

C-1-29

Table 1-15 General Characteristics of CHC and PHC

CHHATARPUR

Type	Name of Facility	Age of PHC	No. of sub-centres attached to PHC	No. of Villages covered by PHC	Population covered by PHC	Distance from SHC/RH	Distance from nearest SHC	Distance from farthest SHC	No. of villages accessible	Remarks
CHC	[36] Badamalhara	41 years	4	155	170,000	50 km	7 km	8 km	80	
B-PHC	[34] Laudi	50 years	22	147	155,000	55 km	6 km	32km	137	
S-PHC	[325] Maharajpur	50	4	21	23,000	46	5	22	21	
S-PHC	[362] Ramtoria	25	3	13	26,000	50	9	13	5	
S-PHC	[333] Khadeha	2	3	25	20,000	32	2	12	3	

Table 1-16 Infrastructure of SHC

CHHATARPUR

Type	Name of Facility	Ownership			Age of Building years	Age of Renovation	Structure	No. of Floors	Site area sqm	Floor area sqm	No. of SHC rms	Water Supply		Electricity		Sewerage		Disposal of Waste		Remarks
		Own	Rented	Donated/free								Borewell	Hand-pump	Supply	None	Soak-pit	None	Incinerator	Burnt in a pit	
SHC	[3652] Weeron	—	○	—	20	—	Pucca*	1	/	20	2	—	○	○	—	—	○	—	○	Rent paid by ANM. Private Hand pump
	[3621] Ramtoria	—	○	—	20	—	Pucca	1	/	28	2	—	○	○	—	—	○	—	○	Rent paid by MP GOV. Private Hand pump
	[3421] Munderi	○	—	—	28	—	Pucca	1	6,000	73	3	—	○	—	○	—	○	—	○	Residence
	[3892] Gadeha	○	—	—	10	—	Pucca	1	/	—	6	—	○	—	○	—	○	—	○	Residence Hand pump 250m away
	[3931] Basari	○	—	—	1	—	Pucca	2	/	120	6	—	○	○	—	—	○	—	○	Residence Hand pump 500m away

*Pucca: Reinforced concrete slab +Masonry wall

Table 1-17 General Characteristics of SHC

CHHATARPUR

Type	Name of Facility	Access by			Compound wall			No. of Villages covered by SHC	Population covered by SHC	Distance from nearest PHC	Distance from farthest PHC	No. of Villages accessible	Remarks
		Rail	Road	Other transport	All around	Partial	None						
SHC	[3652] Weeron	-	○	-	-	-	○	6	6,600	12 km	20 km	6	
	[3621] Ramtoria	-	○	-	-	-	○	5	7,000	0	0	5	
	[3421] Munderi	-	○	-	-	-	○	20~25	8,000	8	60km from D-Hospital	10	
	[3892] Gadeha	-	○	-	-	-	○	4	5,000	15	32km from D-Hospital	3	
	[3831] Basari	-	○	-	-	-	○	2	6,700	17	18km from D-Hospital	2	Donated by local fund

C-1-34

Table 1-18 Infrastructure and Building 1 (District Hospital, CHC and PHC)

PANNA

C-135

Type	Name of Facility	Ownership			Age of Building	Age of Renovation	Structure	No. of Floors	Site area sqm	Floor area sqm	No. of Quarters for								Remarks
		Own	Rented	Donated/Rent free							Doctor	Compounder	Nurse	Pharmacies	X-ray Technician	Lab Technician	Drivers	Attendant	
	{5} District Hospital	MP GOV	-	-	39 years	2 months	RC*+ Pucca**	1	100,000	/	○	○	○	○	○	-	-	132 beds	
CHC	{511} Amanganj	MP GOV	-	-	45 years	17 years	Pucca	1	22,000	/	○	○	○	-	-	-	-	20 beds Converted to CHC in 1984	
B-PHC	{531} Devendra Nagar	MP GOV	-	-	31	4	Pucca	1	/	/	○	-	○	-	-	-	○	6 beds	
S-PHC	{5527} Simaria	MP GOV	-	-	31	16	Pucca	1	20,000	/	○	-	○	-	-	-	-	6 beds	
S-PHC	{521} Dharampura	MP GOV	-	-	1	-	Pucca	1	/	/	○	-	○	-	-	-	-	6 beds	
S-PHC	{513} Saleha	MP GOV	-	-	63	1	RC*+ Pucca	1	/	/	○	○	○	-	-	-	-		

*RC: Reinforced concrete structure
 **Pucca: Reinforced concrete slab+Masonry wall
 ***Kutchha:Roof with Wooden structure

○ : Available
 - : Inavailable
 / : No data

Infrastructure and Building 3 (District Hospital, CHC and PHC)

PANNA

C-1-37

Type	Name of Facility	Access by			Compound wall Fencing		Sewerage			Disposal of Waste		Operation Theaters							Maintenance		Remarks			
		Rail	Road	Other transport	All around	Partial	None	Septic tank	Soak pit	Connected to Sewerage	Incinerator	Burnt in a pit	No. of OT	OT for Obstetrics	Enough space	Fitted with AC	AC working	Generator for OT	Emergency Light	Regular fumigation		Sterilisation on notice	Condition of painting	Condition of floor
	[5] District Hospital	-	o	-	-	o	-	o	-	-	o	3	2	o	o	o	o	o	o	o	o	P	F	
CHC	[511] Amanganj	-	o	-	-	o	-	o	-	-	o	1	-	-	-	-	-	-	o	-	-	P	P	
B-PHC	[531] Devendra Nagar	-	o	-	-	-	o	o	-	-	o	1	-	o	-	-	o	o	o	-	-	P	P	Generator: 650w for OT.
S-PHC	[5527] Simaria	-	o	-	-	o	o	-	-	-	o	1	-	o	-	-	-	-	-	-	-	P	P	
S-PHC	[521] Dharampura	-	o	-	-	-	o	-	-	-	o	1	-	o	-	-	-	-	-	-	-	F	F	
S-PHC	[513] Saleha	-	o	-	-	-	o	o	-	-	o	-	-	-	-	-	-	-	-	-	-	F	P	

G: good F: fair P: poor

Infrastructure and Building 4 (District Hospital, CHC and PHC)

PANNA

Type	Name of Facility	Cleanliness						Close to Hospital				Maternity wards		Out-patient Department in Gynecology/ Obstetrical				Accommodation for patients' family		Remarks	
		OPD	OT	Rooms	Wards	Premises	Toilets	Garbage dump	Cattle shed	Stagnant pool	Polution from Industry	No.of wards	No.of beds	Adequate space	Privacy in Examination	Facility for Counselling	Separate Toilet	Sterilizing instruments	Facility for stay		Cooking facility
	[5] District Hospital	F	F	F	P	P	P	-	-	-	-	2	20	-	○	-	-	○	○	○	General wards: Male 20 beds/ 2 room Female 20 / 2 Others 72 beds
CHC	[511] Amanganj	F	F	F	F	F	P	-	-	-	-	-	-	-	-	-	○	-	-	-	General wards: Male 10 / 1 Female 10 / 1
B-PHC	[531] Devendra Nagar	F	F	F	F	F	P	-	-	-	-	1	2	-	○	○	-	○	-	-	General wards: 10 / 1
S-PHC	[5527] Simaria	F	P	F	P	F	P	-	-	-	-	-	-	-	○	-	○	-	-	-	General wards: Male 3 / 1 Female 3 / 1
S-PHC	[521] Dharampura	F	F	F	F	F	P	-	-	-	-	1	3	○	○	-	-	-	-	-	General wards: 3 / 1
S-PHC	[513] Saleha	F	-	F	-	P	P	-	-	-	-	-	-	○	○	○	-	○	-	-	

Infrastructure and Building 5 (District Hospital, CHC and PHC)

PANNA

Type	Name of Facility	Independent staff accomodation					In building staff accomodation					Remarks
		Doctor	Operator	Nurse	Others	Compounder	Doctor	Operator	Nurse	Others	Compounder	
	[5] District Hospital	○	—	○	—	—	—	—	—	—	—	
CHC	[511] Amanganj	○	—	○	—	—	—	—	—	—	—	
B-PHC	[531] Devendra Nagar	○	—	○	—	—	—	—	—	—	—	Plan and estimate for OT, toilet and fencing are submitted to IPDP.
S-PHC	[5527] Simaria	—	—	—	—	—	○	—	○	—	—	New building is completed
S-PHC	[521] Dharampura	—	—	—	—	—	○	—	○	—	—	Despite new inauguration, not working due to lack of doctors, staff and equipment.
S-PHC	[513] Saleha	○	—	○	—	—	○	—	○	—	—	Extension by IPDP for OT, wards, labour room, sterilization and doctors' room.

C-139

Table 1-19 General Characteristics of CHC and PHC

PANNA

Type	Name of Facility	Age of PHC	No. of sub-centres attached to PHC	No. of Villages covered by PHC	Population covered by PHC	Distance from SHC/RH	Distance from nearest SHC	Distance from farthest SHC	No. of villages accessible	Remarks
CHC	{511} Amanganj	45 years	2	296	85,000	49 km	2.5 km	50 km	102	
B-PHC	{531} Devendra Nagar	31 years	29	257	150,000	50 km	3 km	20km from D-Hospital	83	
S-PHC	{5527} Simaria	31	8	30	25,000	25	10	17	15	
S-PHC	{521} Dharampura	1	4	11	20,000	25	0	55km from D-Hospital	19	
S-PHC	{513} Saleha	63	8	110	52,000	50	2	50km from D-Hospital	55	

C-1-40

Table 1-20 Infrastructure of SHC

PANNA

Type	Name of Facility	Ownership			Age of Building	Age of Renovation	Structure	No. of Floors	Site area sqm	Floor area sqm	No. of SHC rms	Water Supply		Electricity		Sewerage		Disposal of Waste		Remarks
		Own	Rented	Donated/free								Borewell	Hand-pump	Supply	None	Soak-pit	None	Incinerator	Burnt in a pit	
SHC	[5124] Paderi	MP GOV	-	-	9 years	-	Pucca*	1	150	27/ 80	2	○	-	○	-	○	-	-	○	w/ Flag stone slab Well near-by
	[5232] Banheri	MP GOV	-	-	30	-	Pucca	1	265	25/ 70	2	○	-	○	-	○	-	-	○	Well on site donated by ANM.
	[5511] Murach	MP GOV	-	-	26 years	2	Pucca	1	275	25/ 80	2	-	-	-	○	-	○	-	○	No toilet
	[5351] Majhhgawan	MP GOV	-	-	30	-	Pucca	1	220	24/ 70	2	#	-	○	-	○	-	-	○	#Piping provided by NMDC
	[5214] Bagwar	MP GOV	-	-	41	-	Pucca	1	420	43	2	-	-	○	-	-	-	-	○	No toilet

*Pucca: Reinforced concrete slab +Masonry wall

#NMDC: Hospital for demand mine workers

C-141

Table 1-21 General Characteristics of SHC

PANNA

Type	Name of Facility	Access by			Compound wall Fencing			No.of Villages covered by SHC	Population covered by SHC	Distance from nearest PHC	Distance from farthest PHC	No.of Villages accessible	Remarks
		Rail	Road	Other transport	All around	Partial	None						
SHC	[5124] Paderi	-	○	-	○	-	-	6	4,700	35 km	34km from D-Hospital	4	Poor structural condition
	[5232] Banheri	-	○	-	○	-	-	9	7,000	10	55km from D-Hospital	3	
	[5511] Murach	-	○	-	-	-	○	8	6,000	7	22 km	6	
	[5351] Majhhgawan	-	○	-	-	-	○	5	5,000	25	25km from D-Hospital	5	
	[5214] Bagwar	-	○	-	-	-	○	16	8,000	52	85 km	12	

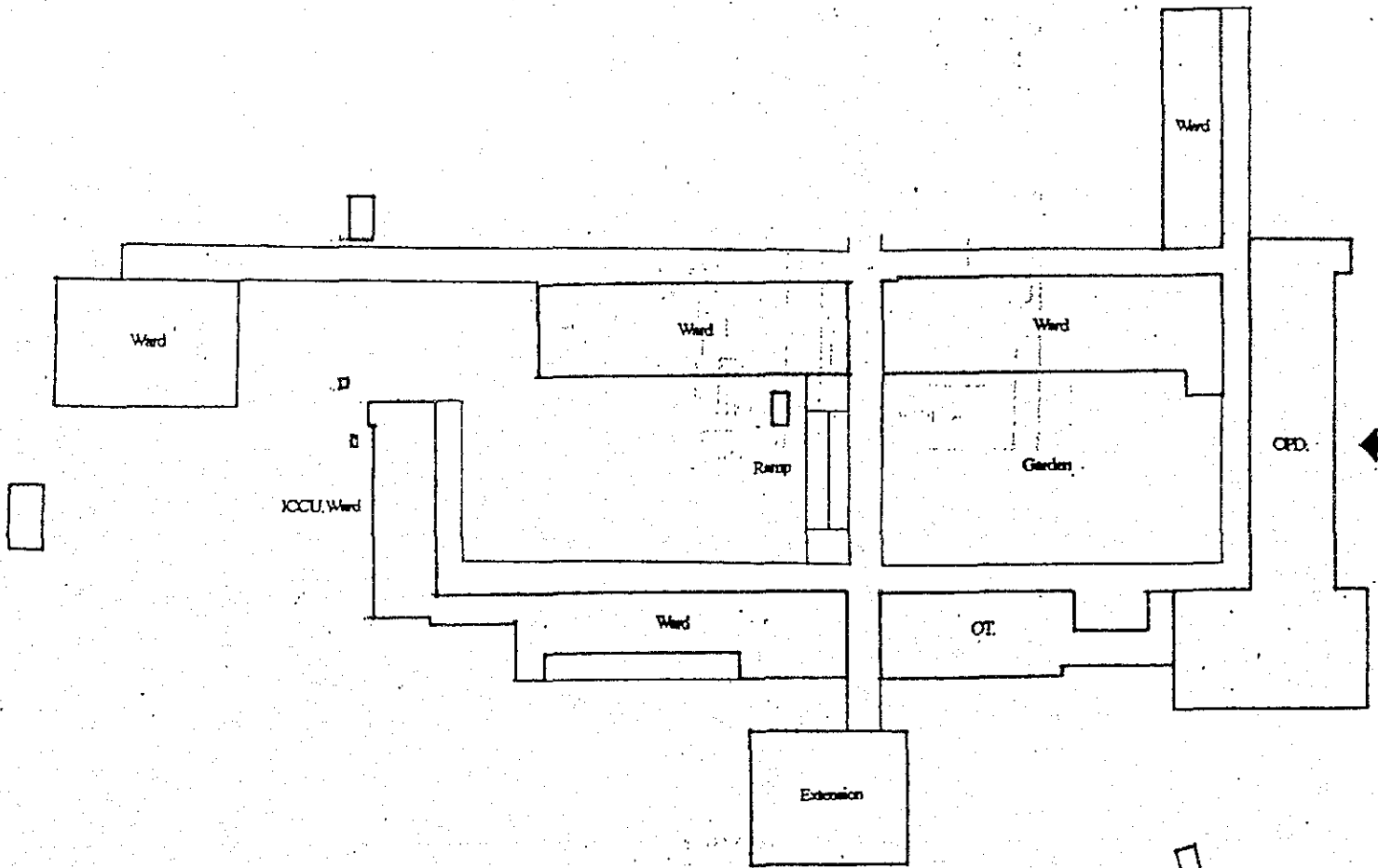
C-1-42

Table 1-22 General Characteristics of Training Centres

<p>Tikamgarh</p>	<p><u>Female Health Training Centre</u></p> <p>Location: on site of District Hospital Donation: DANIDA to MP Government built in 1981 Course: Diploma after 18-month course 34 students Floor area: RC+pucca, 2 storeys, 3,500sqm. Facility: office, lecture rm., dining rm., kitchen, 34 room dormitory toilets, court-yard</p>
<p>Chhatarpur</p>	<p><u>Female Health Workers Training Centre</u></p> <p>Location: on site of District Hospital No.of students: 62 Floor area: RC+pucca, 2 storeys, 4,000sqm.</p> <p style="text-align: right;">RC: Reinforced concrete Pucca: RC slab+masonry wall</p>
<p>Panna</p>	<p><u>District Training Centre</u></p> <p>Location: on adjacent site of District Hospital Donation: UNFPA, on-going structural works are behind the schedule due to lack of water supply Floor area: RC+pucca, ground floor, 560sqm. Facility: office, lecture rm., multi-purpose rm., library, dining rm., kitchen, 2 room dormitory, toilet, bath, court-yard</p> <p>Estimated construction cost: Rs.2,500,000 approx.Rs.4,500/sqm.</p>
<p>Sagar</p>	<p><u>General Training Centre</u></p> <p>Location: adjacent to CMHO office built in 1982 No.of students: approx. 30 Facility: class rms, demonstration rms., dining rm., kitchen dormitory, court-yard</p> <p>Needs: Water supply (presently ordering water-tanker) tube-well staff quarters, boundary fence</p>

1.3 Drawings of Major Health Facilities

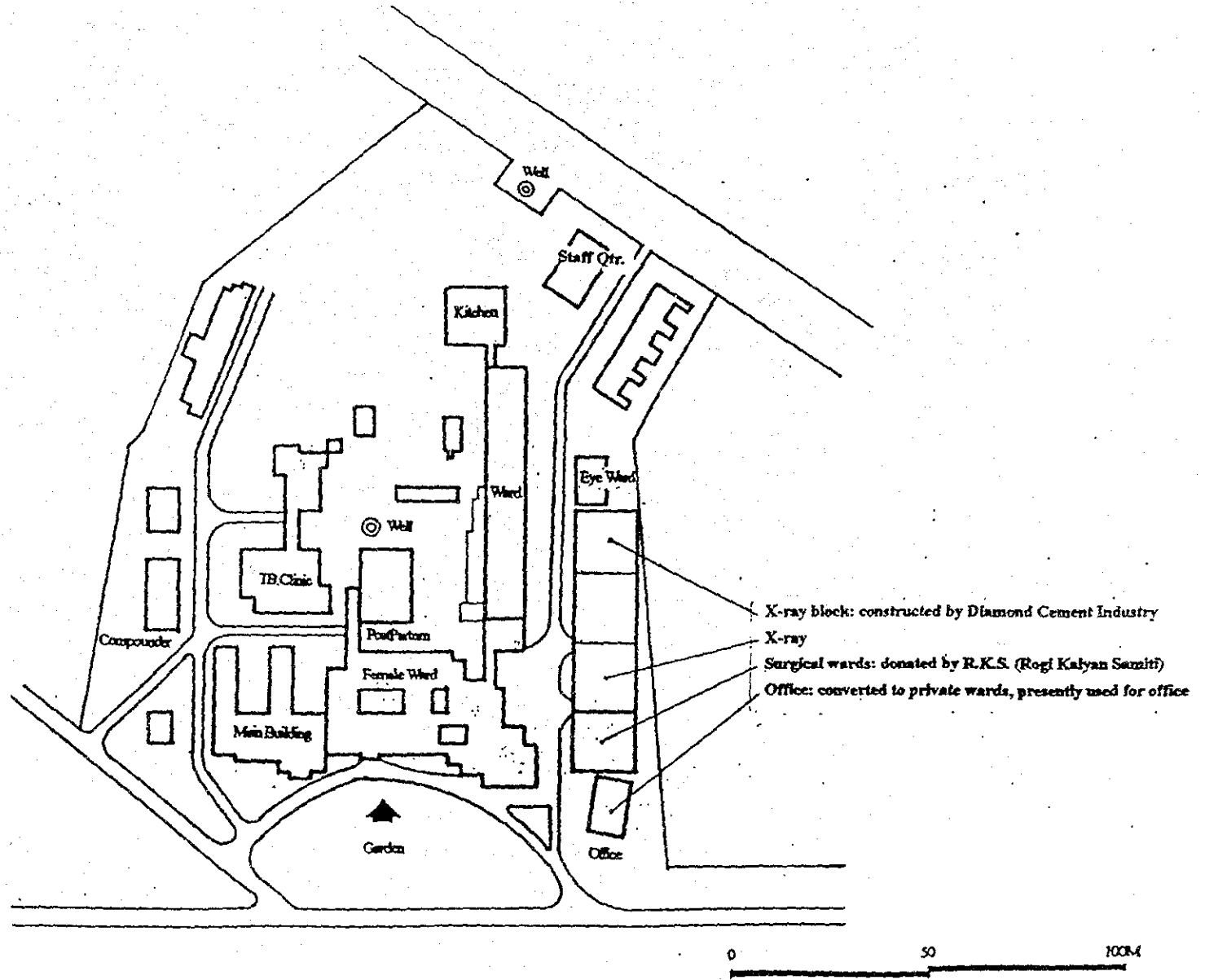
C-144



SITE PLAN OF SAGAR DISTRICT HOSPITAL

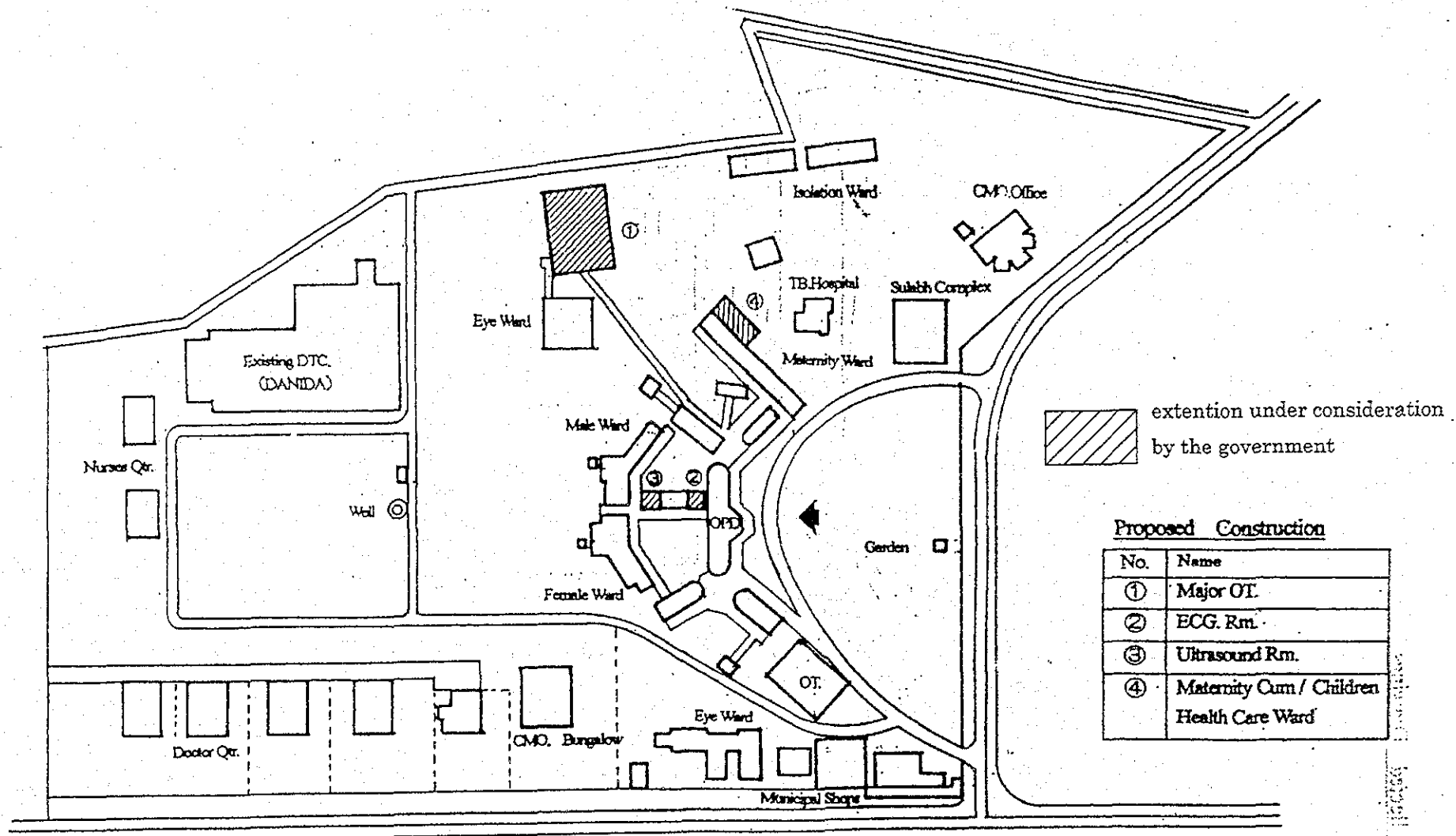


C-1/45

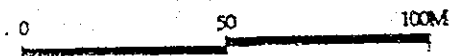


SITE PLAN OF DAMOH DISTRICT HOSPITAL

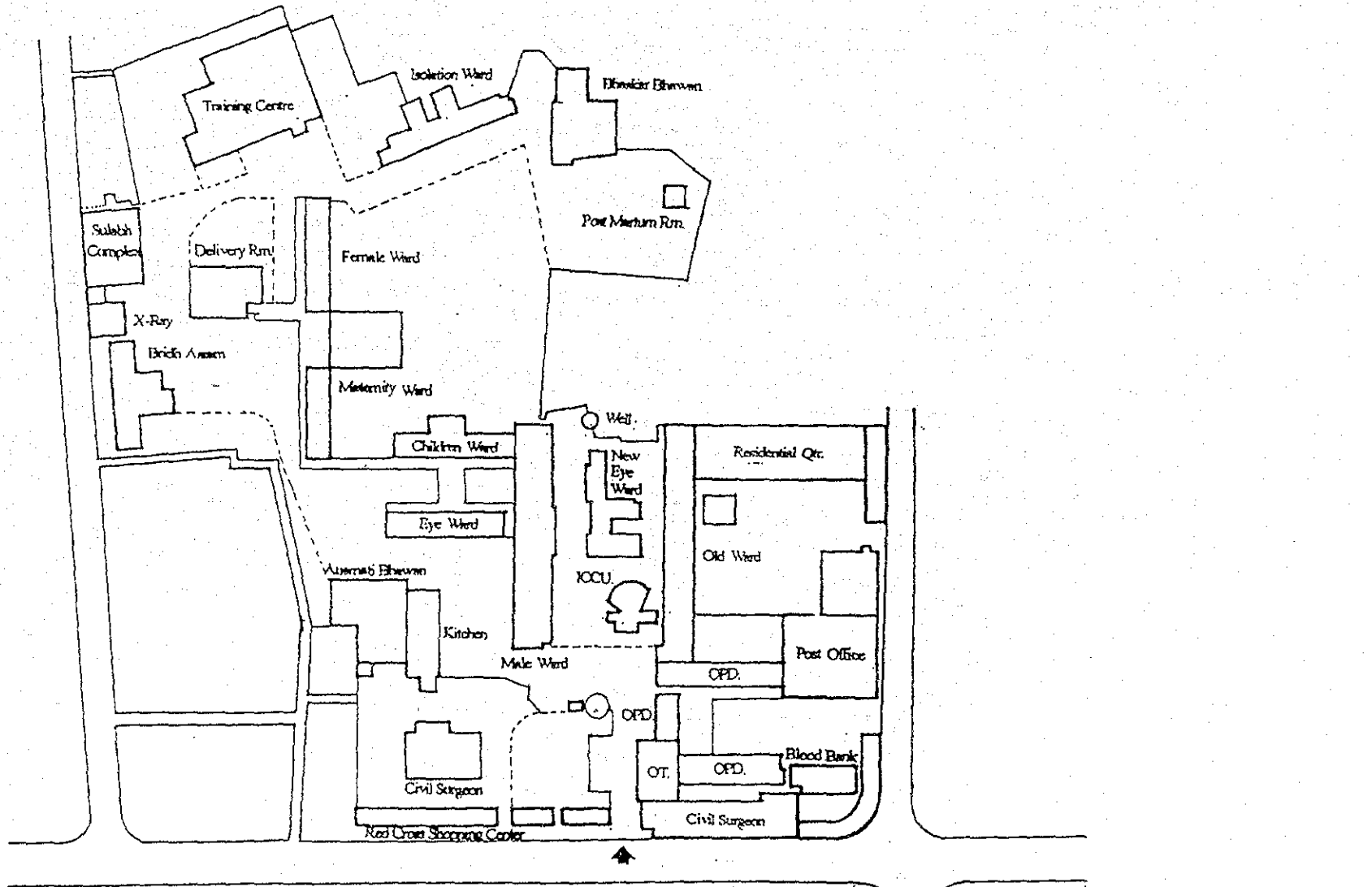
C-146



SITE PLAN OF TIKAMGARH DISTRICT HOSPITAL

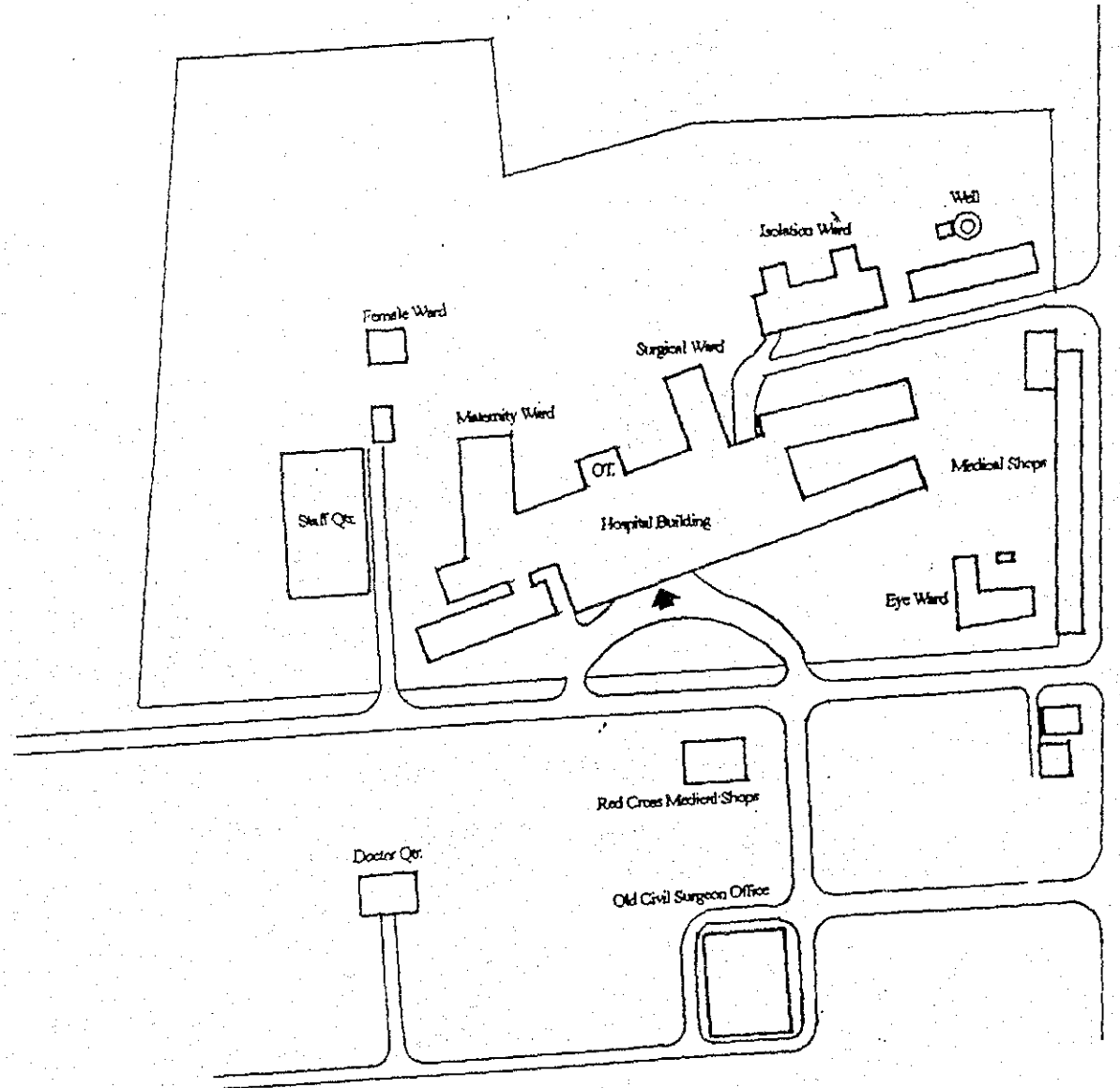


C-1-47

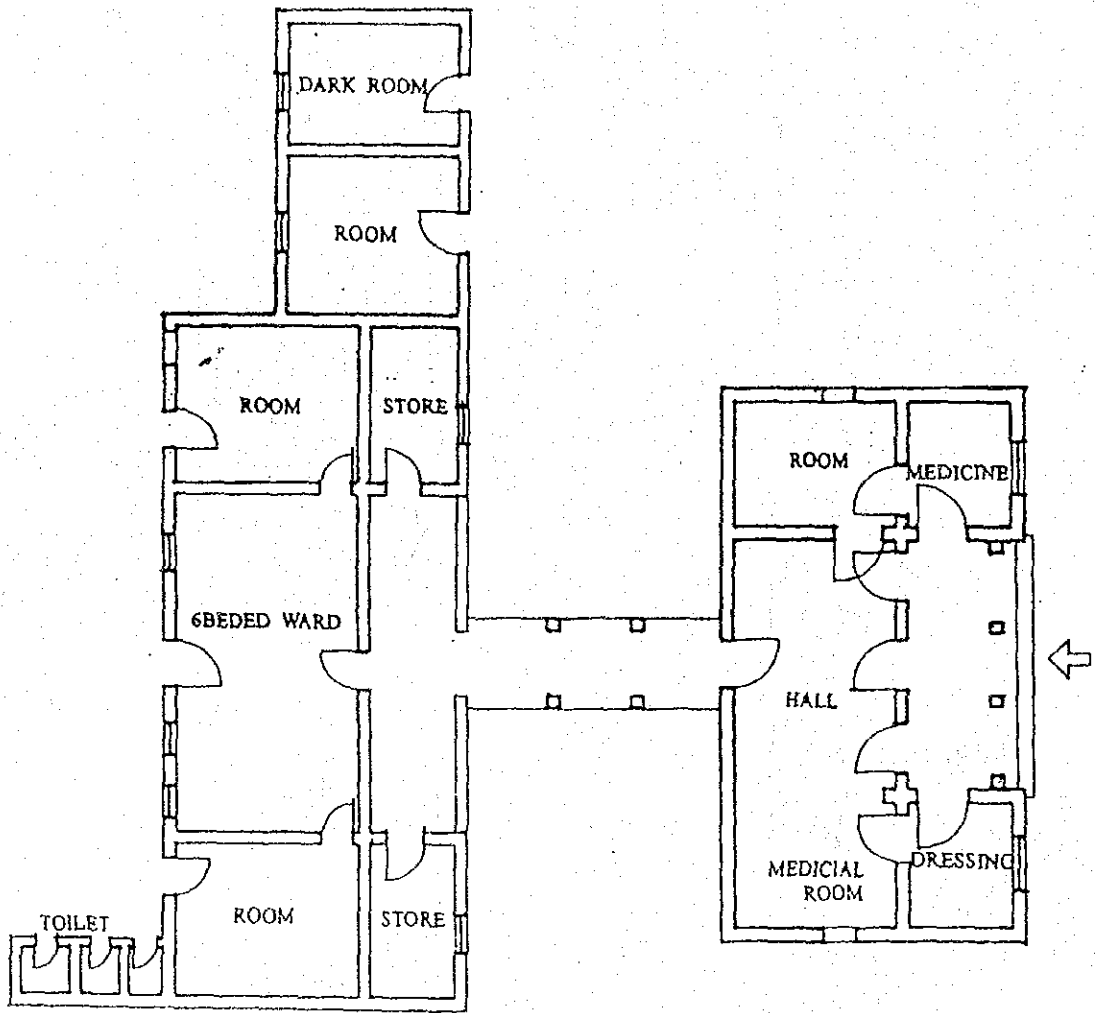


SITE PLAN OF CHHATARPUR DISTRICT HOSPITAL

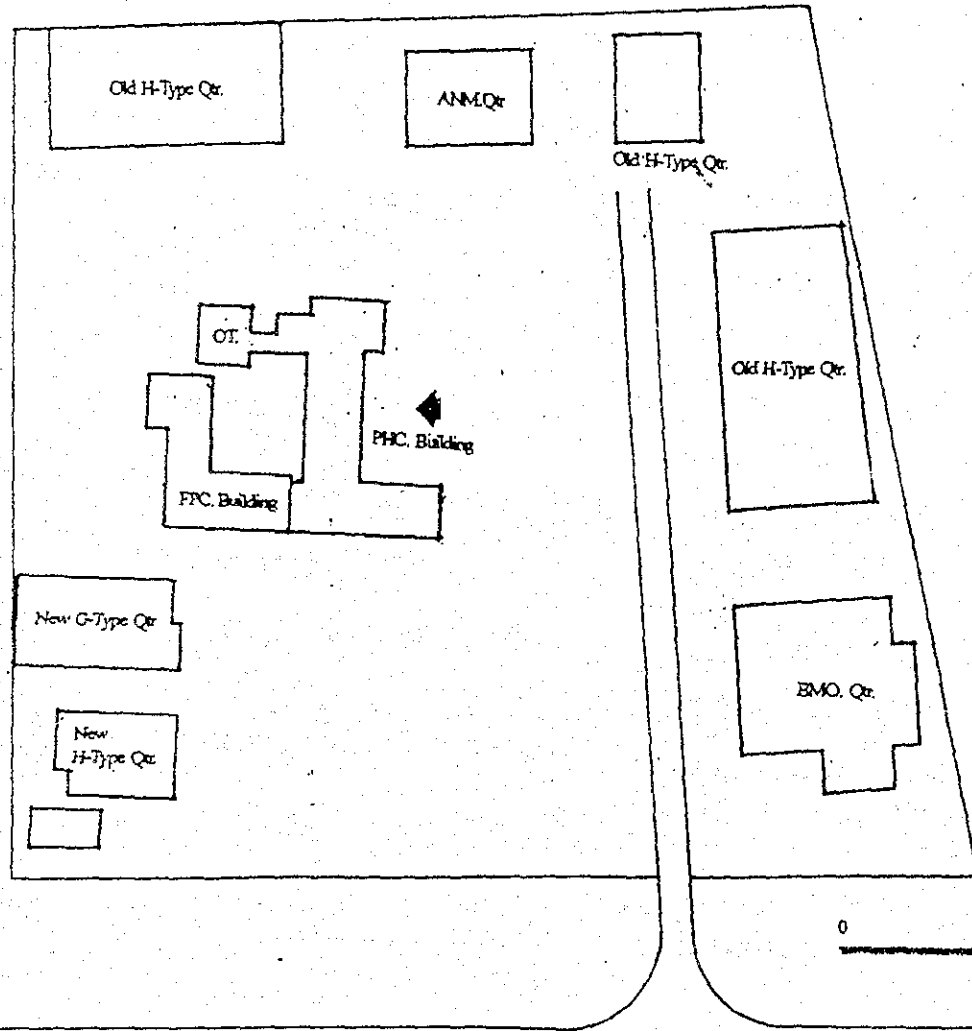
C-148



SITE PLAN OF PANNA DISTRICT HOSPITAL

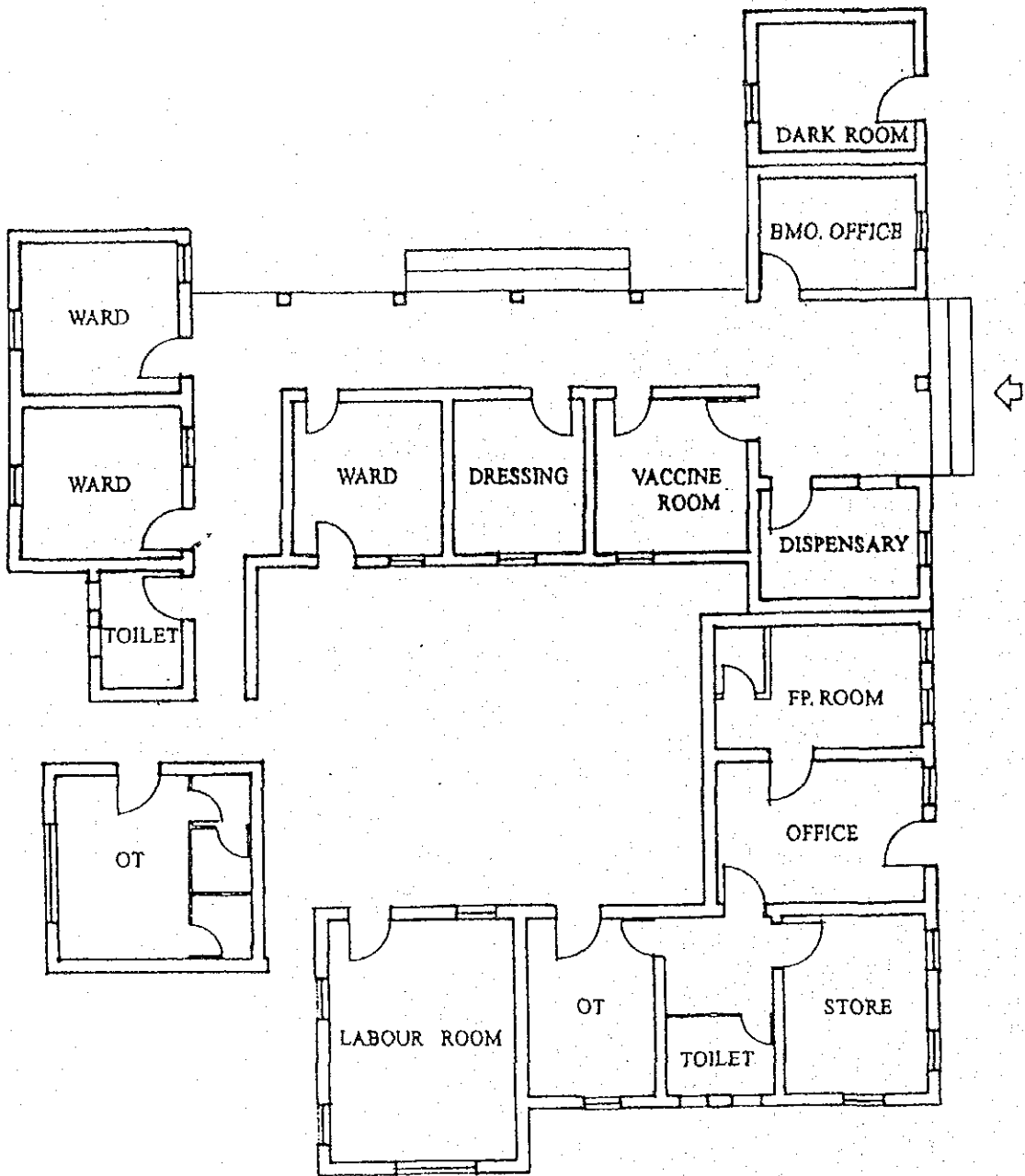


FLOOR PLAN OF PALERA CHC, TIKAMGARH

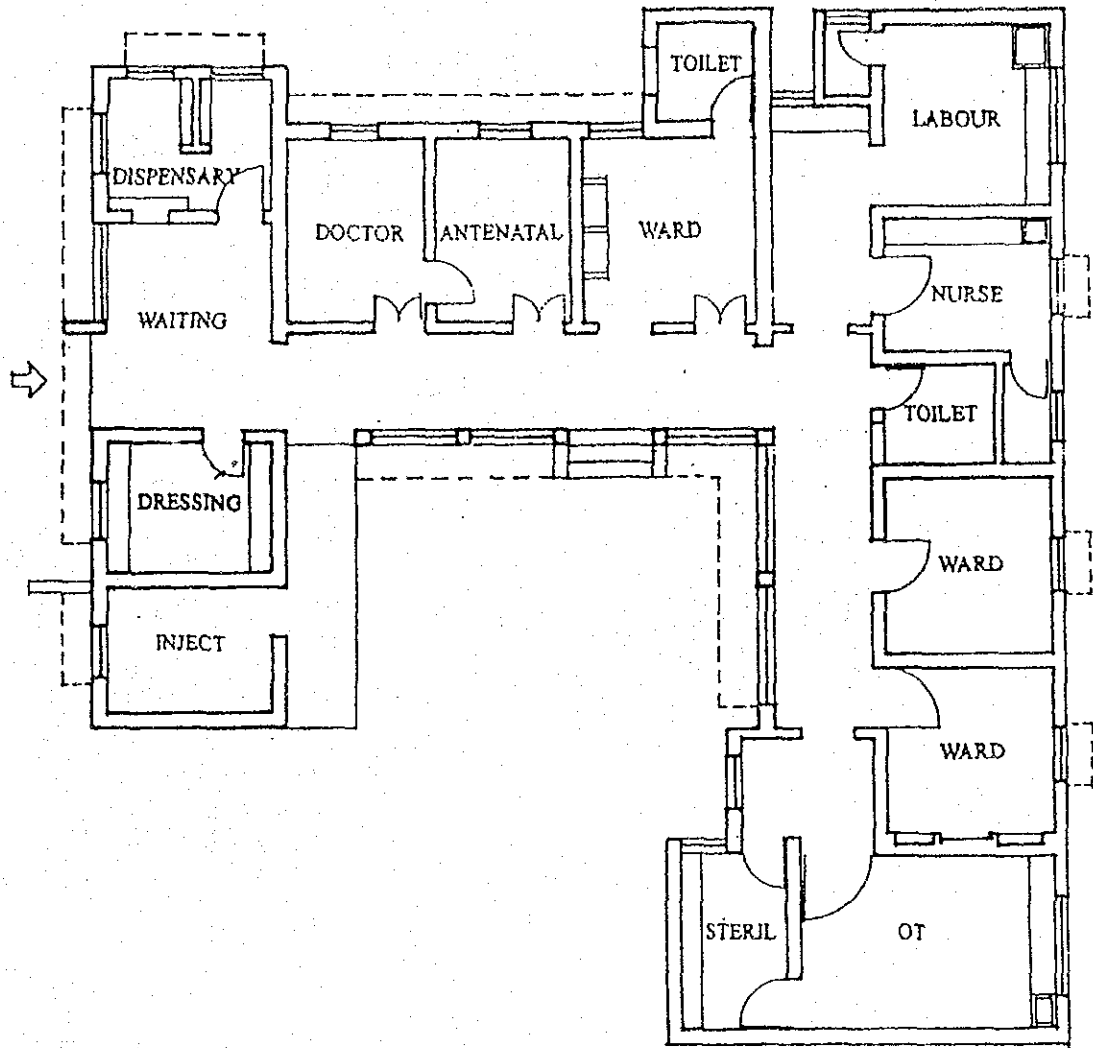


C-1-51

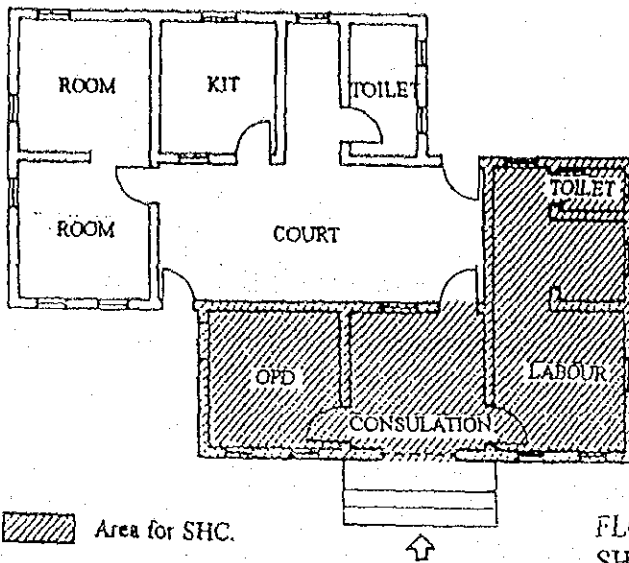
SITE PLAN OF B-PHC BALDVARH, TIKAMGARH, DISTRICT



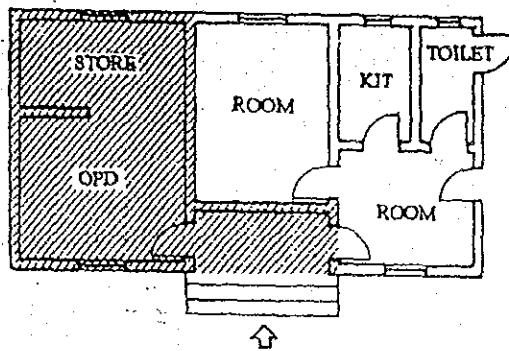
FLOOR PLAN OF BALDEVGARH B-PHC, TIKAMGARH



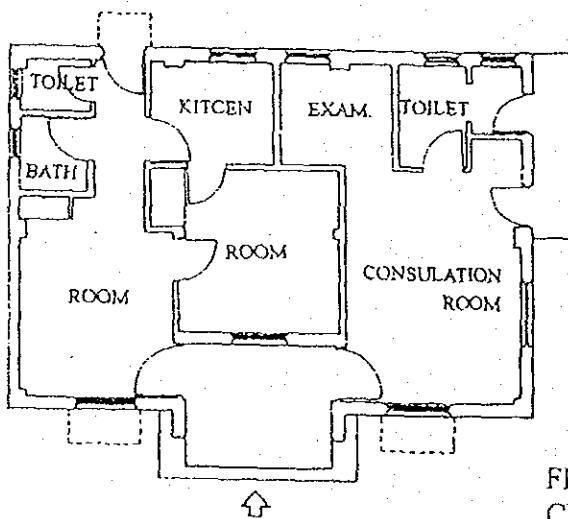
FLOOR PLAN OF PROPOSED S-PHC, PANNA



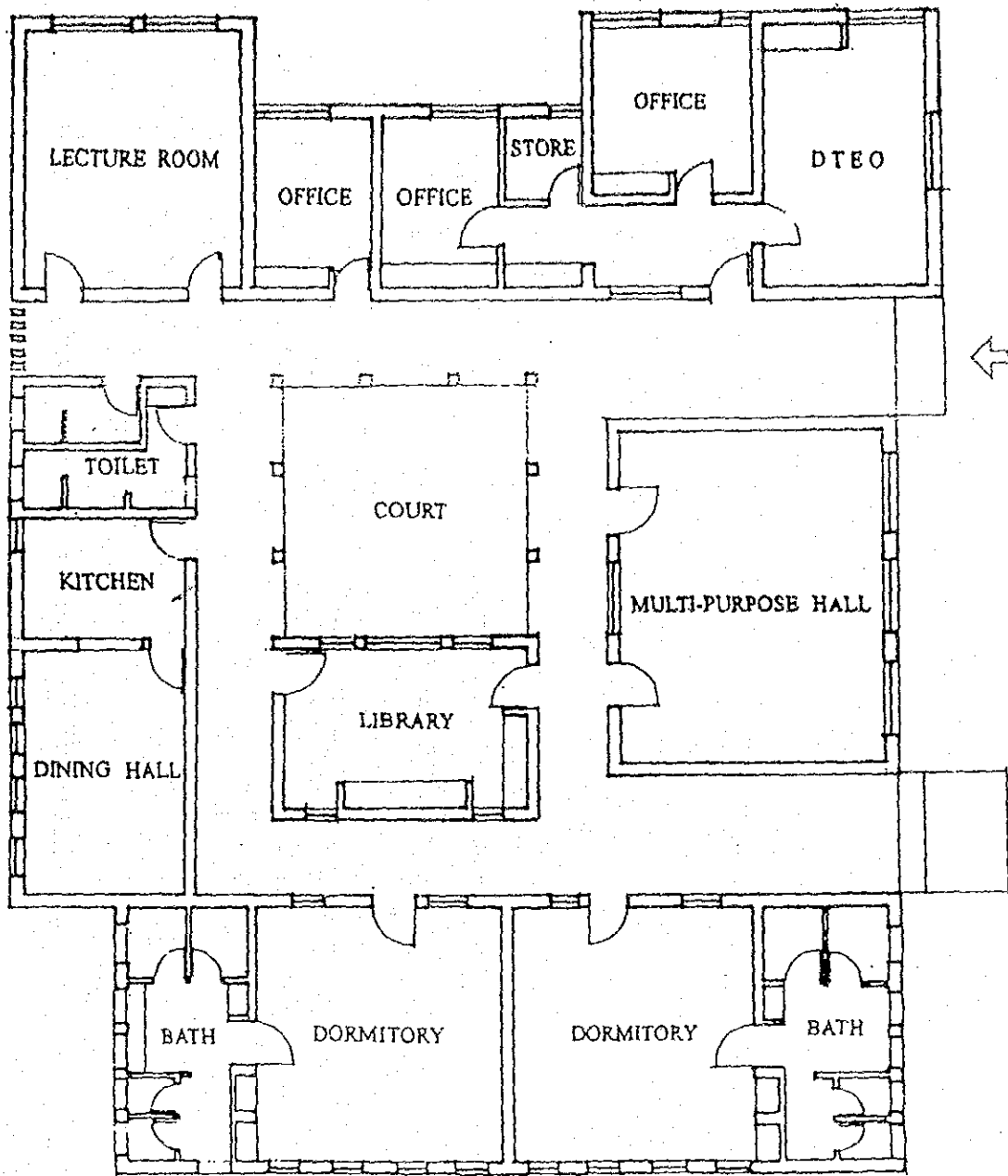
FLOOR PLAN OF SIMURA KHURD SHC, TIKAMGARH (donated by DANIDA.)



FLOOR PLAN OF THONA SHC, TIKAMGARH (donated by DANIDA.)

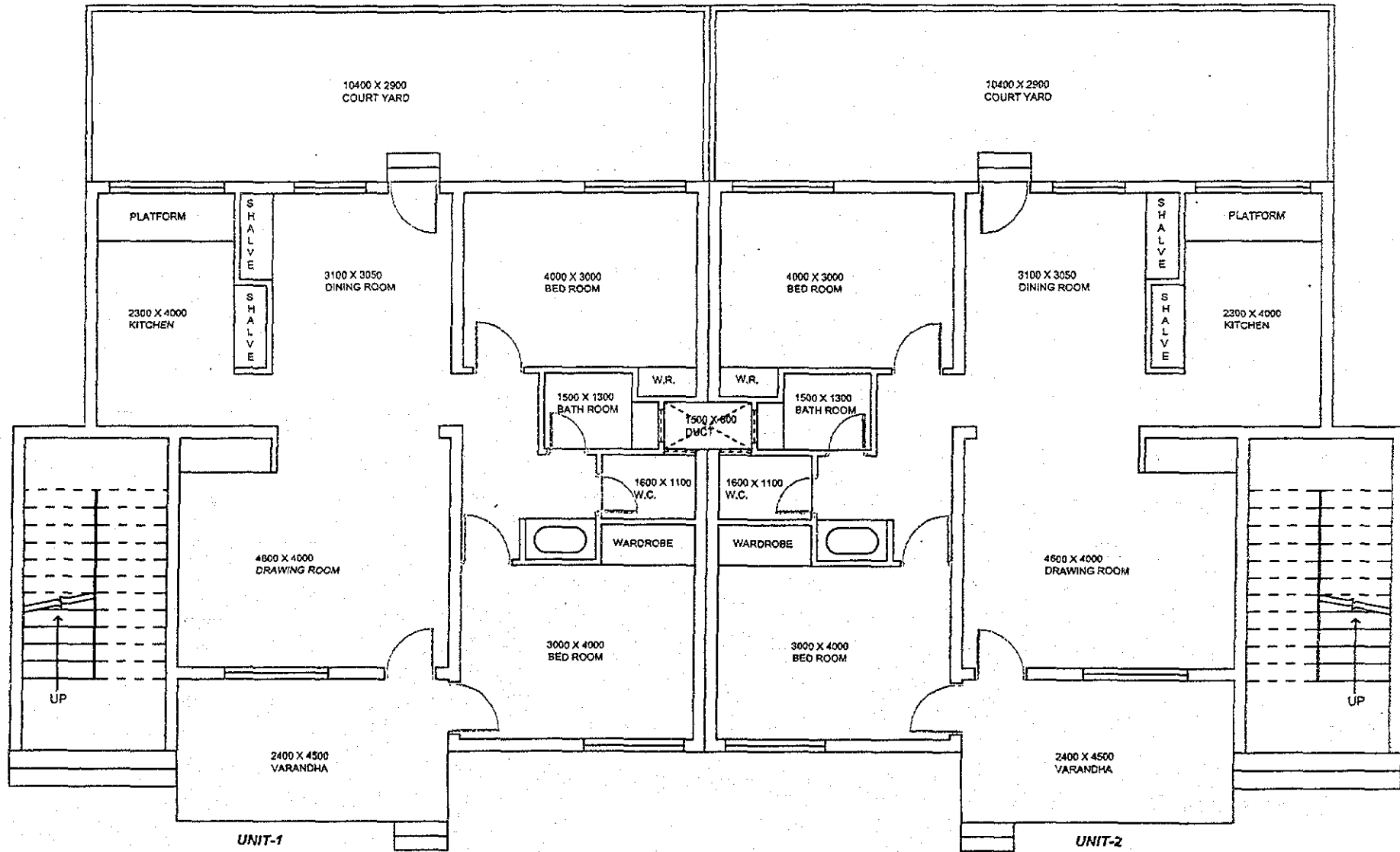


FLOOR PLAN OF PROTO-TYPE SHC, CHHATARPUR



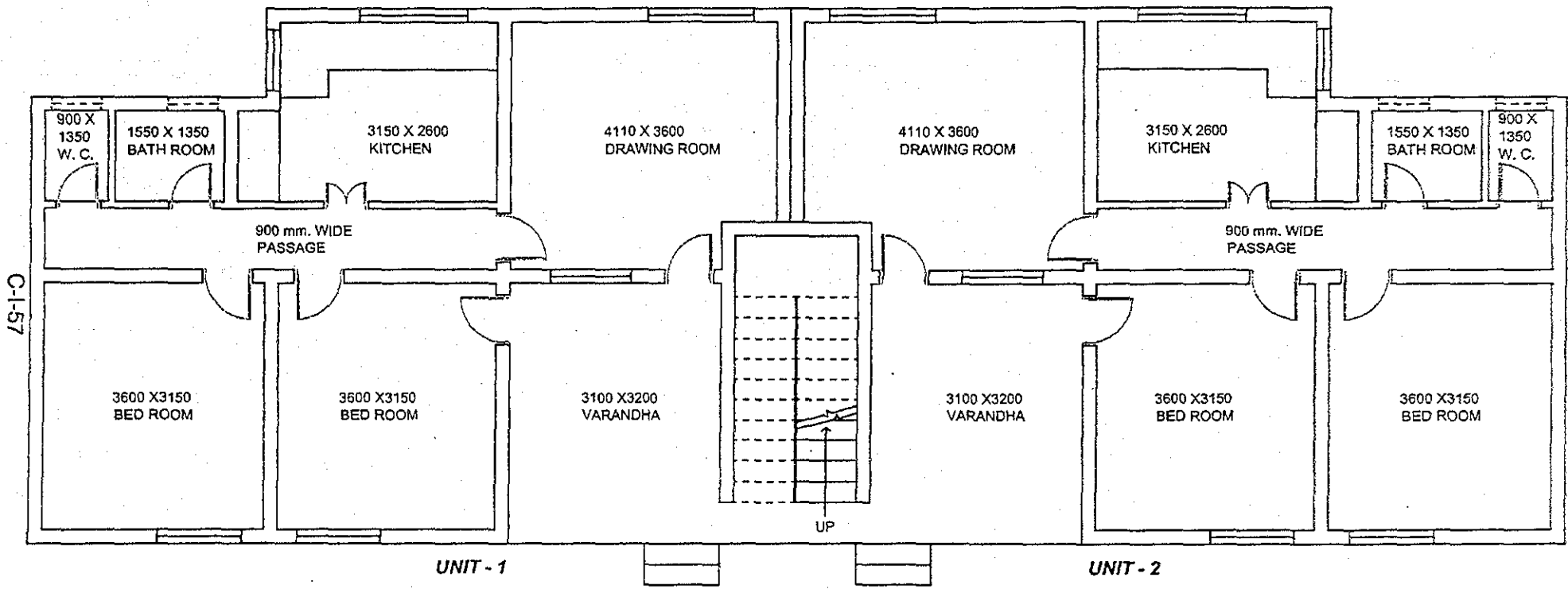
FLOOR PLAN OF DISTRICT TRAINING CENTRE, PANNA
 (under construction as UNFPA project)

C-1-56



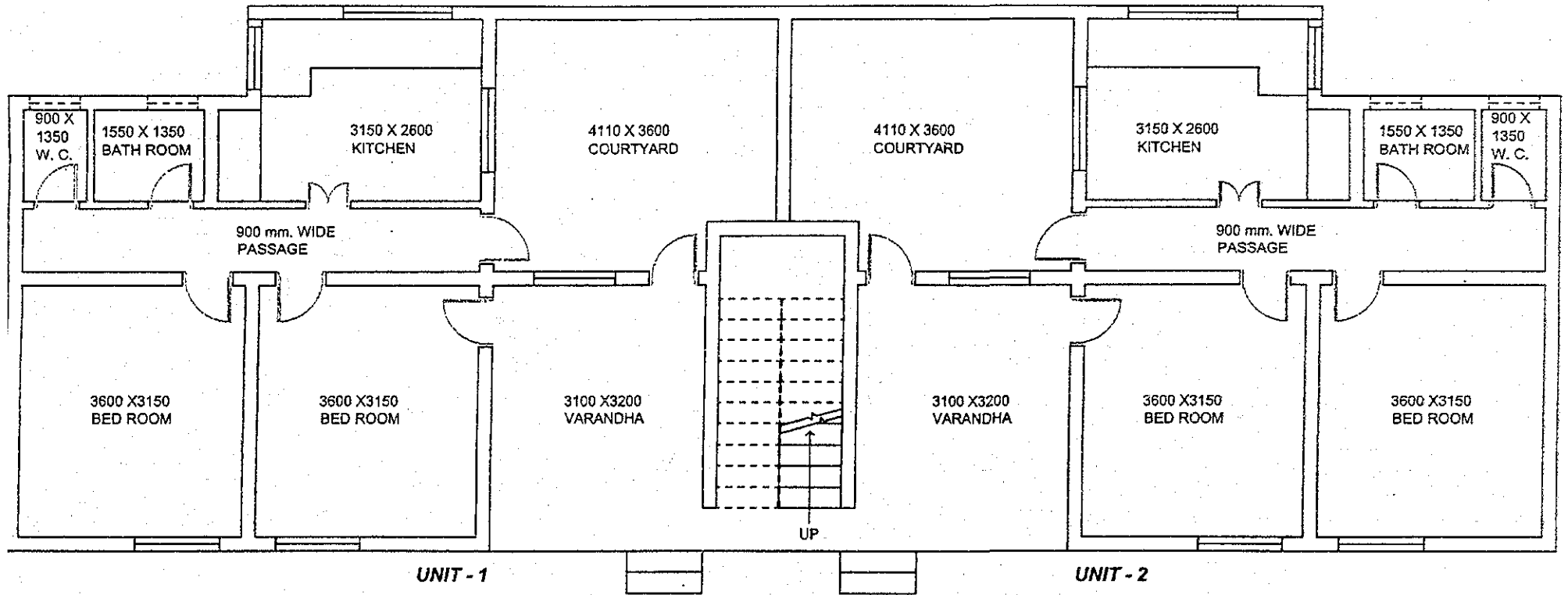
TYPICAL FLOOR PLAN of F-TYPE QUARTER

BUILT UP AREA OF EACH UNIT = 105.08 sqm



TYPICAL FLOOR PLAN of G - TYPE QUARTER

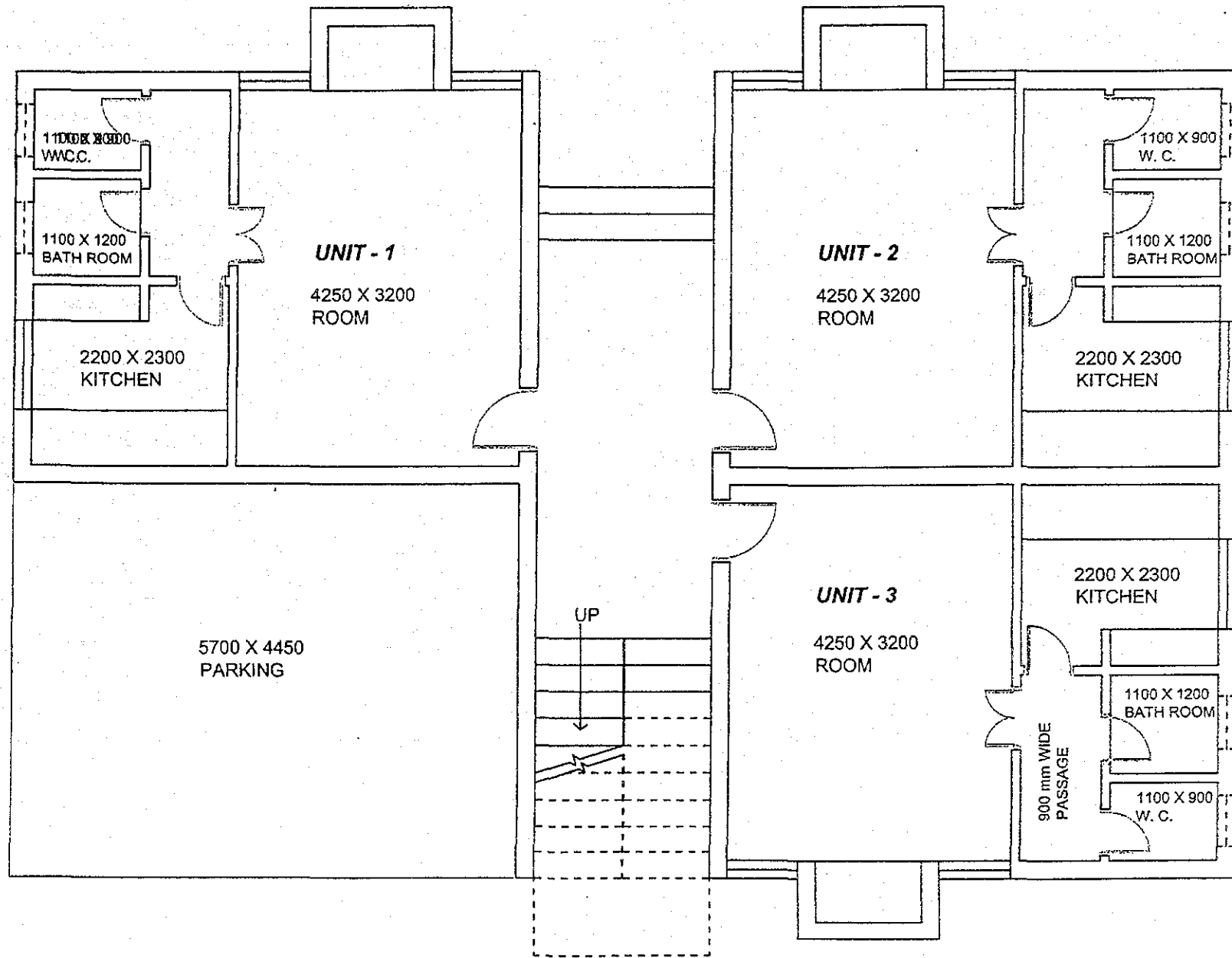
BUILT UP AREA OF EACH UNIT = 82.74 sqm.



TYPICAL FLOOR PLAN of H - TYPE QUARTER

BUILT UP AREA OF EACH UNIT = 67.08 Sqm.

C-1-59



TYPICAL FLOOR PLAN of I - TYPE QUARTER

BUILT UP AREA OF EACH UNIT = 27.96 sq.m

1.4 Infrastructure and Building of Private Hospitals
 Table 1-23 Infrastructure and Building of Private Hospitals

	DAMOH	TIKAMGARH	CHHATARPUR
	Nikhi Nursing Home	Sewa Nursing Home	Chouby Nursing Home
Access	by rail, by road	by road	by road
Age of Building	18 yrs. (ground floor)	7 yrs.	19 yrs.
Age of Renovation	11 yrs. (extension on going)		several times
Structure/No.of storeys Floor area	RC. 2 storeys 850 sqm.	RC. 2 storeys 450 sqm.	RC. 2 storeys 700 sqm.
Water supply	piped, hand pump, tube well	bore well, hand pump	bore well, hand pump
Electricity	all parts generator 7kw.	all parts generator 10kw	all parts generators 15 and 5kw.
Sewerage	2 nos. septic tank	septic tank	septic tank
Disposal of waste	burnt except plastics	burnt in pit	burnt in pit
Telephone	telephone circuit	telephone circuit	telephone circuit e-mail
OPD	adequate space, facility and instruments	adequate space, facility and instruments	adequate space, facility and instruments
OT	1 for surgery, 1 for gynac	1major, 1 minor delivery rm.	1 for surgery 1 for gynae
Ward	9 maternity wards	2 general wards (14 beds) 4 special wards	10 maternity beds 16 private beds
Accomodation for staff	Doctor's residence	Doctor's residence on 1st floor	Doctor's residence on 1st floor
Remarks	All parts are maintained properly and cleanly	OPD hours:10:30 to 17:00 15-30 patients/day in av. emergency unit working 24 hrs. bed occupancy rate: 50-60% construction cost of ground floor: Rs.770,000	New site is obtained 15km away from town for the future construction of medical complex facilities

Table 2-2

PROVISION OF VARIOUS FLOOR AREAS
IN WARD UNIT AND WARD ANCILLARIES

PROVISION OF VARIOUS FLOOR AREAS
IN DELIVERY SUITE UNIT

Category A: 25 to 50 Beds
Category B: 51 to 100 Beds
Category C: 101 to 300 Beds

FACULTY	WARD UNIT-IN-PATIENT NURSING UNIT			FACULTY	CATEGORY OF HOSPITAL		
	8 to 15 beds	16 to 23 beds	24 to 30 beds		A	B	C
	Room Area No. Sqm.	Room Area No. Sqm.	Room Area No. Sqm.		Room Area No. Sqm.	Room Area No. Sqm.	Room Area No. Sqm.
General Ward				1. Reception and admission w/waiting area	-	-	1 21
a) Nursing station with work area and toilet	1 14	1 17.5	1 17.5	2. Examination and preparation w/toilet	1 14	1 14	1 17.5
b) Doctor's duty room with toilet	-	1 17.5	1 17.5	3. Doctor's change room	1 10.5	1 10.5	1 10.5
c) Treatment room	1 10.5	1 10.5	1 14	4. Nurses change room	-	1 10.5	1 10.5
d) Laboratory	-	1 7	1 7	5. Class IV change room	-	-	1 10.5
e) Ward pantry	1 10.5	1 10.5	1 10.5	6. Technician change room	-	-	-
f) Ward store	1 10.5	1 10.5	1 14	7. Sterile storage	-	1 14	1 21
g) Trolley bay	-	-	1 10.5	8. Instrument and linen store	-	-	1 10.5
h) Sluice room	1 10.5	1 10.5	1 14	9. Trolley bay	-	-	1 10.5
i) Janitor's closet	-	1 3.5	1 3.5	10. Switch room	-	1 7	1 10.5
k) Day space	-	1 14	1 14	11. Recovery room	-	1 14	1 21
m) Patient's relatives waiting area with toilets	1 14	1 17.5	1 17.5	12. Pack preparation room	-	1 10.5	1 10.5
n) Sanitary annexe	Refer to REQUIREMENTS FOR SANITARY FITTINGS IN HOSPITAL FOR PATIENTS			13. Anaesthesia room	-	-	1 14
Additional for Paediatric Ward				14. Labour room	1 10.5	1 21 (2 cubicles)	1 31.5 (3 cubicles)
a) Formula room	1 10.5	1 10.5	1 10.5	15. Delivery room	1 21	1 21	2 21
b) Clothes room	-	1 14	1 14	16. Operating delivery room	-	1 28	1 28
c) Play room	1 10.5	1 14	1 21	17. Instrument sterilizing	-	1 10.5	1 14
d) Dining room	-	-	1 10.5	18. Scrub up	-	1 7	2 7
e) Class room	-	1 10.5	1 10.5	19. Children birth	-	1 7	1 10.5
Additional for Antenatal Ward				20. Eclampsia room	-	-	-
a) Additional to c)	1 7	1 7	1 7	21. Dirty utility	1 7	1 10.5	1 10.5
b) Additional to d)	1 7	1 7	1 7	22. Janitors closet	-	1 3.5	1 3.5
	UP TO 32 MATERNITY BEDS		OVER 32 MATERNITY BEDS	REQUIREMENTS FOR SANITARY FITMENTS IN HOSPITALS FOR PATIENTS			
	Room Area No. sqm.	Room Area No. sqm.		REQUIREMENTS			
Neonatal Unit				1. Water-closets	In-Patient Wards or Nursing Units (Males & Females) 1 for every 8 beds or part thereof (male) 1 for every 8 beds or part thereof (female)		
a) Nursery				2. Ablution taps	1 for each water-closet plus one water tap with draining arrangements in the vicinity of water closets		
i) Premature	1 10.5	1 21		3. Urinals	1 for every 12 beds or part thereof (males only)		
ii) Septic	1 10.5	1 14		4. Wash basin	1 for every 12 beds or part thereof		
iii) Normal	1 10.5	1 14		5. Baths	1 bath with shower for every 12 beds or part thereof		
b) Nurse station with toilet	1 14	1 17.5		6. Bed pan washing sinks	1 for each ward in dirty utility and sluice room		
c) Doctor's duty room with toilet	-	1 17.5		7. Cleaner's sinks and sink/slab	1 for each ward in dirty utility and sluice room		
d) Formula cum breast feeding room	1 10.5	1 10.5		8. Kitchen sinks and dishwashers	1 for each ward in ward pantry		
e) Store	1 7	1 10.5		OPD and Other Department(Levatory Block)			
f) Phototherapy	1 7	1 10.5		1. Water-closets	For Males 1 for every 40 persons or part thereof	For Females 2 for every 50 persons or part thereof	
g) Sluice room	1 7	1 10.5		2. Ablution taps	1 in each water-closet		
				3. Urinals	1 for every 25 persons or part thereof		
				4. Wash basins	1 for every 50 persons or part thereof		1 for every 50 persons or part thereof

Source: Indian Standard
RECOMMENDATIONS FOR
BASIC REQUIREMENTS OF GENERAL
HOSPITAL BUILDINGS
PART 2 MEDICAL SERVICES DEPARTMENT BUILDINGS