

Appendix 2

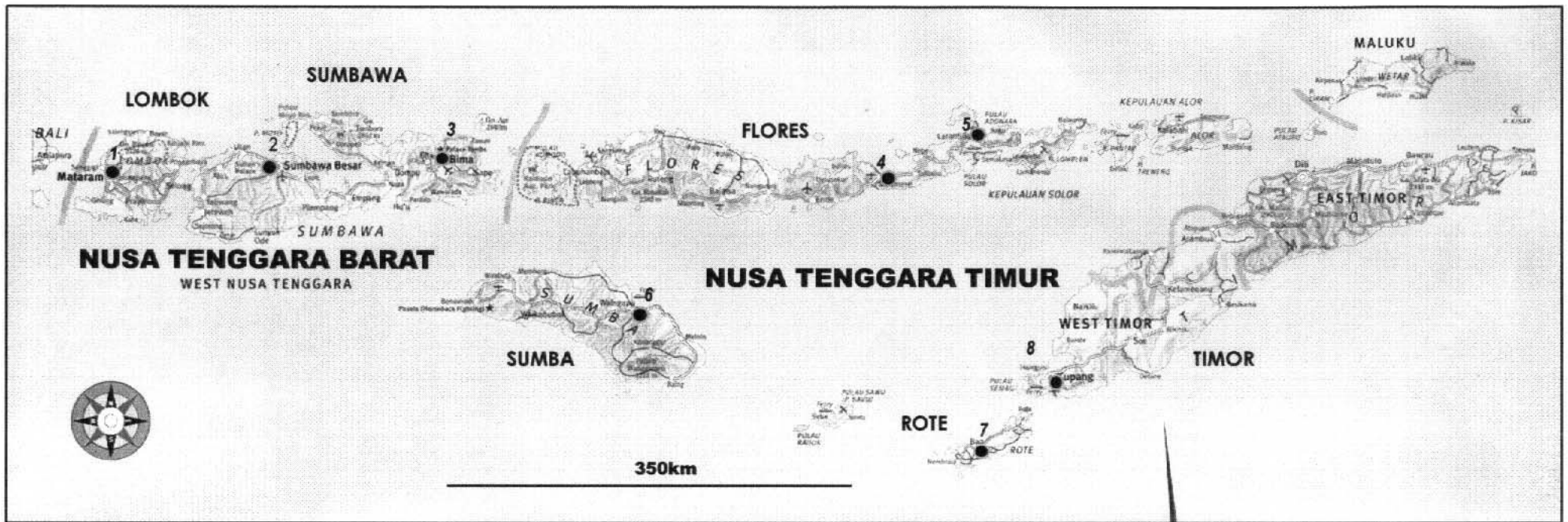
HYDROMETEOROLOGICAL DATA

Appendix 2
HYDROMETEOROLOGICAL DATA

TABLE OF CONTENTS

2.1	Location Map of Meteorological Stations	A2-1
2.2	Hydrometeorologic Gauging Station.....	A2-2
2.3	Monthly Precipitation, Monthly Average Temperature Potential Evapotranspiration, Monthly Water Resources Amount (P-PE)	A2-3
2.4	Precipitation - (Ampenan).....	A2-4
2.5	Precipitation - (Sumbawa Besar).....	A2-5
2.6	Precipitation - (Bima)	A2-6
2.7	Precipitation - (Maumere)	A2-7
2.8	Precipitation - (Larantuka)	A2-8
2.9	Precipitation - (Waingapu)	A2-9
2.10	Precipitation - (Baa)	A2-10
2.11	Precipitation - (Kupang).....	A2-11
2.12	Average Temperature - (Ampenan).....	A2-12
2.13	Average Temperature - (Bima)	A2-13
2.14	Average Temperature - (Sumbawa Besar).....	A2-14
2.15	Average Temperature - (Maumere).....	A2-15
2.16	Average Temperature - (Larantuka)	A2-16
2.17	Average Temperature - (Waingapu)	A2-17
2.18	Average Temperature - (Baa)	A2-18
2.19	Average Temperature - (Kupang).....	A2-19
2.20	Potential Evapotranspiration - (Ampenan).	A2-20
2.21	Potential Evapotranspiration - (Sumbawa Besar).	A2-21
2.22	Potential Evapotranspiration - (Bima)	A2-22
2.23	Potential Evapotranspiration - (Maumere).	A2-23
2.24	Potential Evapotranspiration - (Larantuka).	A2-24
2.25	Potential Evapotranspiration - (Waingapu).	A2-25
2.26	Potential Evapotranspiration - (Baa).	A2-26
2.27	Potential Evapotranspiration - (Kupang).	A2-27

2.28	Water Resources Amount(P-PE) - (Ampenan).	A2-28
2.29	Water Resources Amount(P-PE) - (Sumbawa Besar).	A2-29
2.30	Water Resources Amount(P-PE) - (Bima)	A2-30
2.31	Water Resources Amount(P-PE) - (Maumere).	A2-31
2.32	Water Resources Amount(P-PE) - (Larantuka).	A2-32
2.33	Water Resources Amount(P-PE) - (Waingapu)	A2-33
2.34	Water Resources Amount(P-PE) - (Baa).	A2-34
2.35	Water Resources Amount(P-PE) - (Kupang).	A2-35
2.36	Mainly Hydrological Standard Year	A2-36
2.37	Annual Precipitation Versus Frequency of Exceedance - (Ampenan)...	A2-37
2.38	Annual Precipitation Versus Frequency of Exceedance-(Sumbawa Besar)	A2-38
2.39	Annual Precipitation Versus Frequency of Exceedance (Bima).....	A2-39
2.40	Annual Precipitation Versus Frequency of Exceedance - (Maumere)...	A2-40
2.41	Annual Precipitation Versus Frequency of Exceedance - (Larantuka)..	A2-41
2.42	Annual Precipitation Versus Frequency of Exceedance - (Waingapu)..	A2-42
2.43	Annual Precipitation Versus Frequency of Exceedance - (Baa).....	A2-43
2.44	Annual Precipitation Versus Frequency of Exceedance - (Kupang)	A2-44



A 2 - 1

Appendix 2. 1 Location Map of Meteorological Stations

< Station >

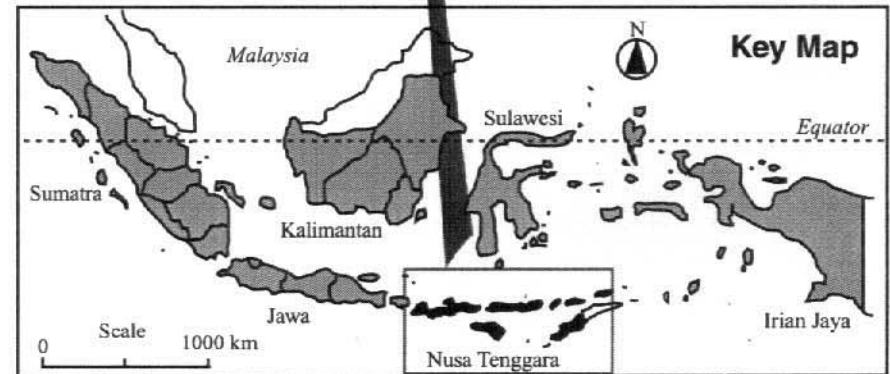
- 1 Ampanan
- 2 Sumbawa Besar
- 3 Bima

- 4 Maumere
- 5 Larantuka
- 6 Waingapu
- 7 Baa
- 8 Kupang

< Province >

- Nusa Tenggara Barat
- Nusa Tenggara Barat
- Nusa Tenggara Barat

- Nusa Tenggara Timur
- Nusa Tenggara Timur
- Nusa Tenggara Timur
- Nusa Tenggara Timur
- Nusa Tenggara Timur



Hydrometeorologic Gauging Station

Province	Island	Station	Location			Data Collection Periods	
			Latitude	Longitude	Altitude	Precipitation	Temperature
NTB	Lombok	Ampenan	08° 32' S	116° 04' E	16 m	1982. 1 -1994.12	1982. 1 -1994.12
	Sumbawa	Sumbawa Besar	08° 25' S	117° 30' E	3 m	1981. 9 -1994.12	1981. 9 -1994.12
		Bima	08° 33' S	118° 42' E	0.8 m	1982. 1 -1994.12	1982. 4 -1994.12
NTT	Flores	Maumere	08° 38' S	122° 21' E	25 m	1983. 1 -1994.12	1983. 1 -1994.12
		Larantuka	08° 17' S	123° 00' E	9 m	1983. 3 -1994.12	1983. 3 -1994.12
	Sumba	Waingapu	09° 40' S	120° 20' E	10 m	1981. 1 -1994.12	1981. 1 -1994.12
	Rote	Baa	10° 32' S	122° 50' E	139 m	1982. 1 -1994.12	1982. 1 -1994.12
	Timor	Kupang	10° 11' S	123° 34' E	102 m	1981. 1 -1994.12	1982. 1 -1994.12

Monthly Precipitation

	Jan	Feb	Mar	Apr	May	Jun	Jul	Aug	Sep	Oct	Nov	Dec	Total
Ampenan	276	240	210	154	100	42	19	16	34	128	236	233	1,687
Sumbawa Besar	287	282	267	118	30	17	3	2	11	29	136	194	1,377
Bima	241	170	130	65	31	12	13	2	8	26	109	178	985
Maumere	164	208	143	118	24	18	23	1	13	16	102	150	980
Larantuka	301	327	163	99	26	18	23	6	3	31	88	119	1,202
Waingapu	178	157	158	72	31	17	8	1	2	6	50	122	801
Baa	448	392	261	91	29	24	18	3	5	10	67	215	1,563
Kupang	462	382	214	103	18	11	11	0	7	12	116	246	1,581

Monthly Average Temperature

	Jan	Feb	Mar	Apr	May	Jun	Jul	Aug	Sep	Oct	Nov	Dec	Average
Ampenan	26.5	26.5	26.4	26.5	26.0	25.3	24.7	24.8	25.6	26.6	26.9	26.8	26.1
Sumbawa Besar	26.3	25.9	26.2	26.7	26.6	26.0	25.4	25.7	26.7	27.7	27.7	26.8	26.5
Bima	27.1	27.0	27.1	27.4	27.0	26.2	25.5	26.1	27.7	28.8	28.9	27.8	27.2
Maumere	27.5	27.0	27.6	27.8	27.8	27.0	26.7	26.8	27.8	29.1	29.4	28.4	27.7
Larantuka	27.0	26.9	27.0	27.3	27.5	26.8	26.2	26.2	27.0	28.6	29.1	28.1	27.3
Waingapu	27.0	26.5	26.7	26.7	26.2	25.4	24.7	24.9	26.0	27.4	28.2	27.5	26.4
Baa	26.8	26.7	26.8	27.0	26.7	25.7	25.0	25.4	26.4	27.7	28.6	27.6	26.7
Kupang	26.7	26.4	26.7	27.2	27.0	26.1	25.3	25.7	26.6	27.8	28.4	27.5	26.8

Potential Evapotranspiration

	Jan	Feb	Mar	Apr	May	Jun	Jul	Aug	Sep	Oct	Nov	Dec	Total
Ampenan	144	131	140	133	127	109	104	107	119	143	148	154	1,559
Sumbawa Besar	140	119	135	136	136	119	114	120	135	167	166	153	1,641
Bima	156	137	151	148	145	120	114	126	158	194	194	173	1,816
Maumere	163	136	163	158	159	135	133	137	160	204	210	191	1,949
Larantuka	152	136	149	146	155	132	126	127	142	189	201	184	1,838
Waingapu	154	130	144	136	130	109	102	107	125	160	177	169	1,644
Baa	150	131	146	140	138	115	108	115	132	166	182	171	1,694
Kupang	147	126	143	144	145	121	112	120	135	170	182	168	1,713

Monthly Water Resources Amount (P-PE)

	Jan	Feb	Mar	Apr	May	Jun	Jul	Aug	Sep	Oct	Nov	Dec	Total
Ampenan	132	109	70	21	-28	-68	-85	-91	-86	-15	88	80	128
Sumbawa Besar	147	162	132	-18	-106	-102	-111	-118	-125	-138	-30	41	-264
Bima	85	33	-21	-83	-114	-109	-101	-124	-150	-168	-86	5	-832
Maumere	1	72	-20	-40	-135	-117	-110	-136	-147	-187	-108	-40	-969
Larantuka	149	191	14	-47	-129	-114	-103	-121	-139	-158	-113	-65	-636
Waingapu	24	27	14	-65	-99	-92	-94	-106	-124	-154	-127	-47	-843
Baa	298	261	116	-49	-109	-91	-90	-112	-127	-155	-116	43	-131
Kupang	315	256	71	-42	-127	-110	-101	-120	-129	-158	-66	78	-133

Appendix 2. 3 Monthly Precipitation, Monthly Average Temperature
Potential Evapotranspiration, Monthly Water Resources Amount (P-PE)

Monthly Precipitation - (Ampenan)

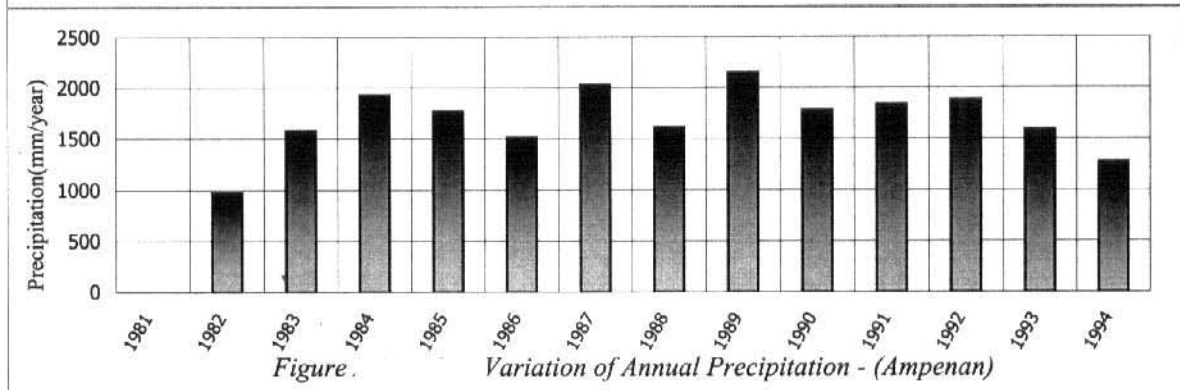
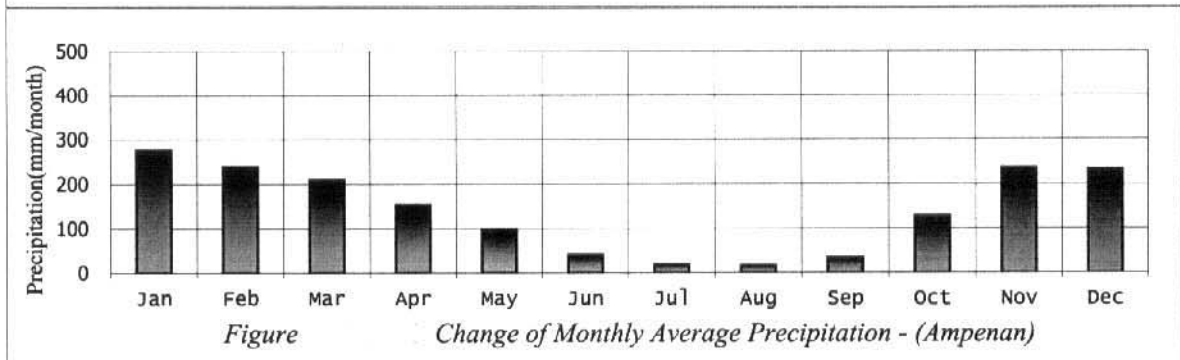
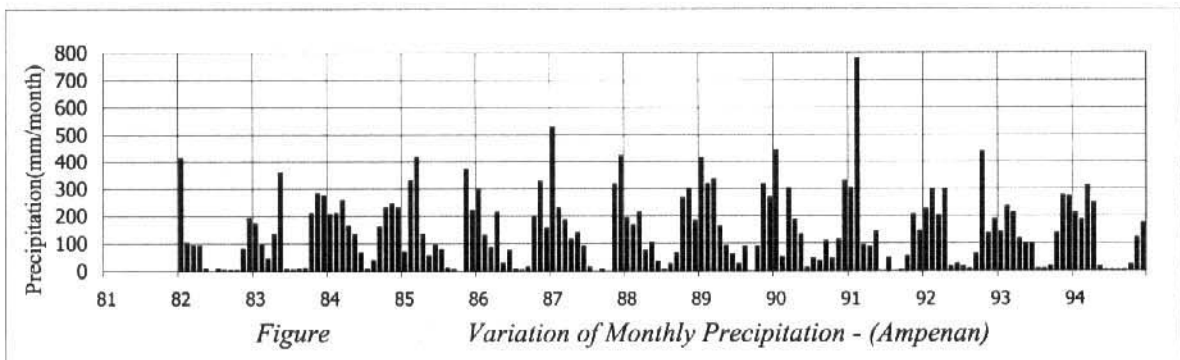
Station: Ampenan

Latitude: 08° 32' S

Longitude: 116° 04' E

Altitude: 16 m

	Jan	Feb	Mar	Apr	May	Jun	Jul	Aug	Sep	Oct	Nov	Dec	Total
1981													
1982	411	100	90	88	8	0	7	2	1	1	79	190	977
1983	170	96	43	131	358	4	2	6	9	208	281	274	1,582
1984	205	209	255	163	130	65	5	37	158	229	244	229	1,929
1985	68	330	417	133	54	93	77	10	3	0	369	220	1,774
1986	297	127	83	212	27	72	6	1	13	196	325	154	1,513
1987	526	230	183	113	137	87	13	0	6	0	316	421	2,032
1988	191	166	212	73	101	32	3	24	64	265	300	181	1,612
1989	414	316	333	161	89	59	24	85	0	86	315	266	2,148
1990	442	49	300	185	131	10	42	34	106	42	111	327	1,779
1991	301	778	91	84	141	0	45	0	2	51	203	143	1,839
1992	222	295	200	295	13	23	13	6	60	434	134	186	1,881
1993	138	233	209	115	95	95	6	6	15	134	273	270	1,589
1994	208	185	309	246	12	1	1	1	2	20	118	172	1,275
Average	276	240	210	154	100	42	19	16	34	128	236	233	1,687



Monthly Precipitation - (Sumbawa Besar)

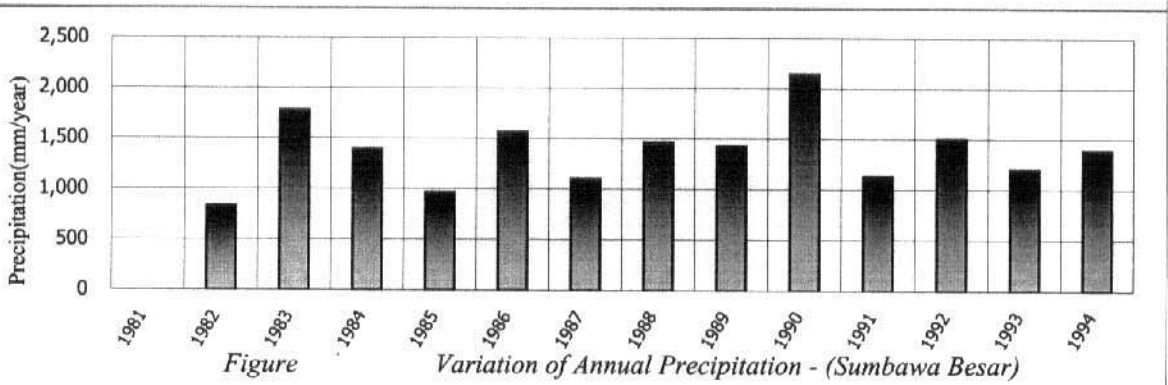
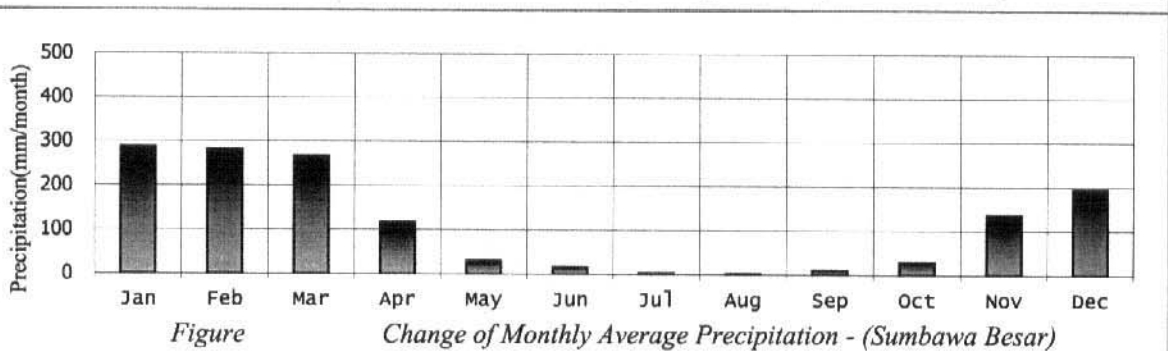
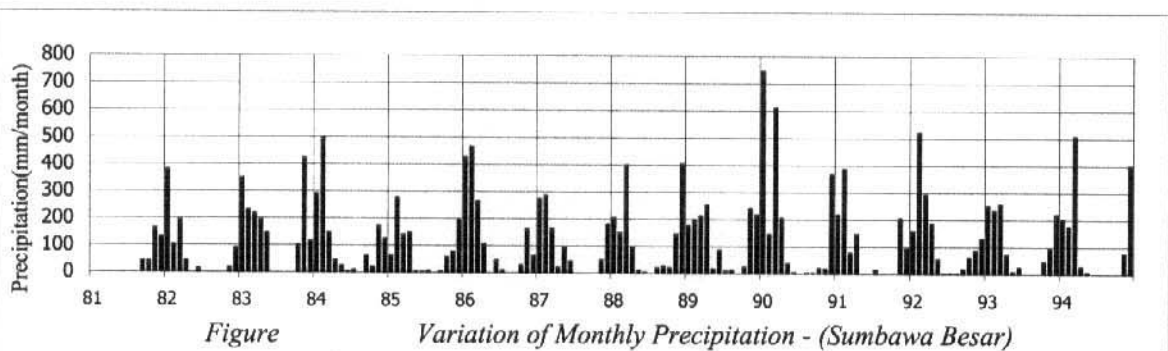
Station: Sumbawa Besar

Latitude: 08° 25' S

Longitude: 117° 30' E

Altitude: 3 m

	Jan	Feb	Mar	Apr	May	Jun	Jul	Aug	Sep	Oct	Nov	Dec	Total
1981									43	42	162	131	
1982	379	102	192	44	0	13	0	0	0	0	17	89	836
1983	348	231	218	195	146	0	0	0	0	101	423	116	1,778
1984	290	497	147	46	24	3	9	0	62	20	170	124	1,392
1985	63	277	139	148	2	1	6	0	3	56	76	195	966
1986	426	465	264	105	0	45	8	0	0	27	160	63	1,563
1987	272	285	163	19	93	42	0	0	0	0	47	180	1,101
1988	203	148	399	95	9	2	0	18	26	18	143	403	1,464
1989	175	197	211	253	15	85	7	11	0	21	240	215	1,430
1990	744	144	611	204	35	3	0	2	1	19	17	364	2,144
1991	217	386	77	146	0	0	13	0	0	0	204	93	1,136
1992	158	520	291	185	53	1	1	1	17	60	84	129	1,500
1993	251	234	256	70	7	23	0	0	0	45	93	219	1,198
1994	201	175	507	26	5	0	0	0	0	0	74	399	1,387
Average	287	282	267	118	30	17	3	2	11	29	136	194	1,377



Appendix 2. 5 Precipitation - (Sumbawa Besar)

Monthly Precipitation - (Bima)

Station: Bima

Latitude: 08° 33' S

Longitude: 118° 42' E

Altitude: 0.8 m

	Jan	Feb	Mar	Apr	May	Jun	Jul	Aug	Sep	Oct	Nov	Dec	Total
1981													
1982	123	184	145	42	0	0	0	0	0	0	9	125	628
1983	210	242	55	68	119	0	0	0	0	79	181	113	1,067
1984	230	171	161	77	88	19	1	0	69	62	116	419	1,413
1985	184	169	156	45	7	12	37	0	0	3	209	94	916
1986	267	149	120	52	2	41	20	0	2	16	80	152	901
1987	267	214	37	16	46	0	0	0	4	0	77	179	840
1988	183	157	175	69	46	8	0	7	16	71	154	205	1,091
1989	255	155	169	76	6	41	97	13	1	39	111	141	1,104
1990	385	140	127	53	67	0	0	0	1	5	33	279	1,090
1991	322	175	71	197	3	0	3	3	0	0	129	101	1,004
1992	235	238	86	46	11	1	6	1	10	55	179	179	1,047
1993	118	122	134	63	10	32	0	0	1	6	75	194	755
1994	355	95	256	36	0	1	0	0	0	4	59	137	943
Average	241	170	130	65	31	12	13	2	8	26	109	178	985

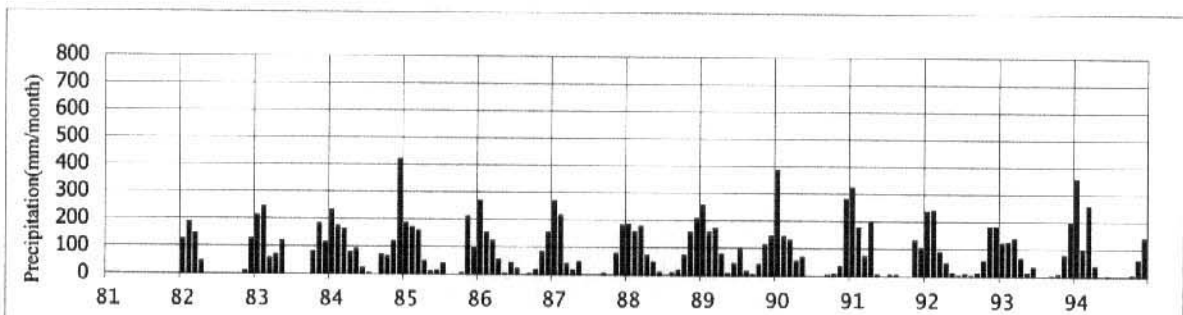


Figure Variation of Monthly Precipitation - (Bima)

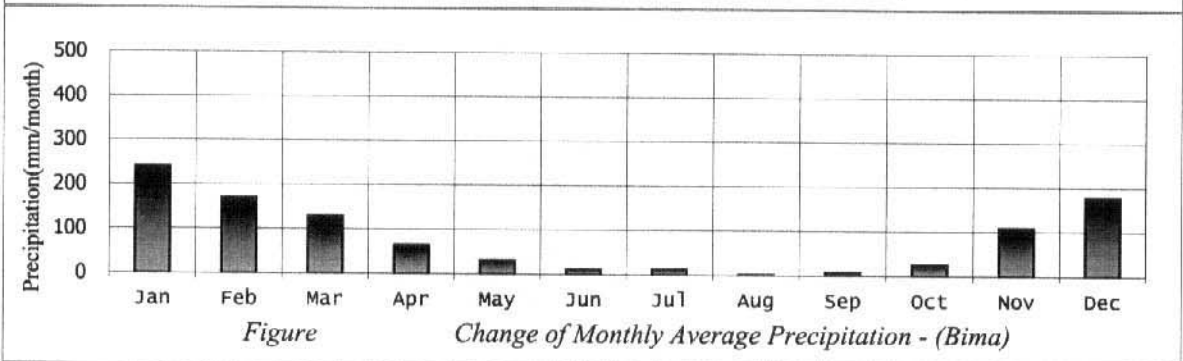


Figure Change of Monthly Average Precipitation - (Bima)

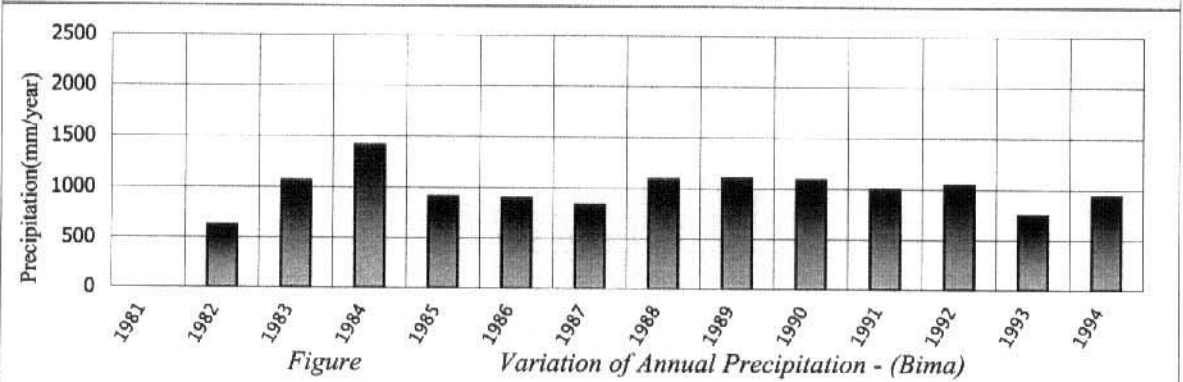


Figure Variation of Annual Precipitation - (Bima)

Monthly Precipitation - (Maumere)

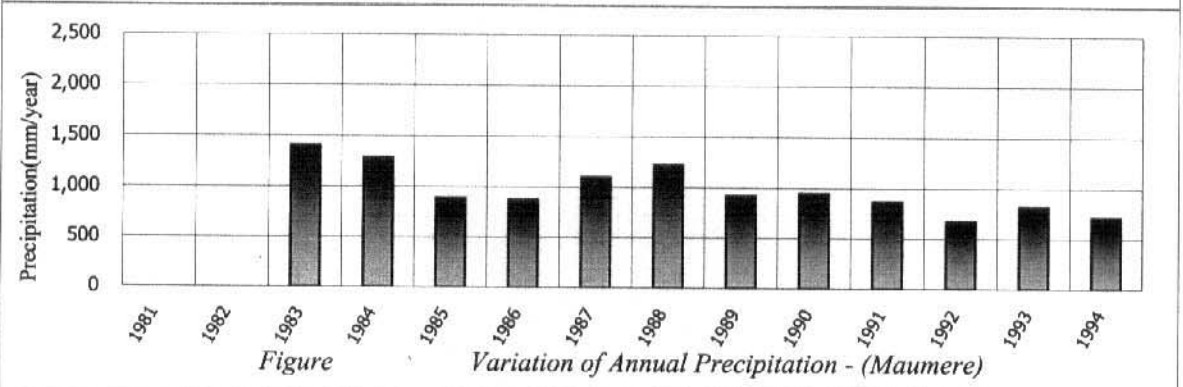
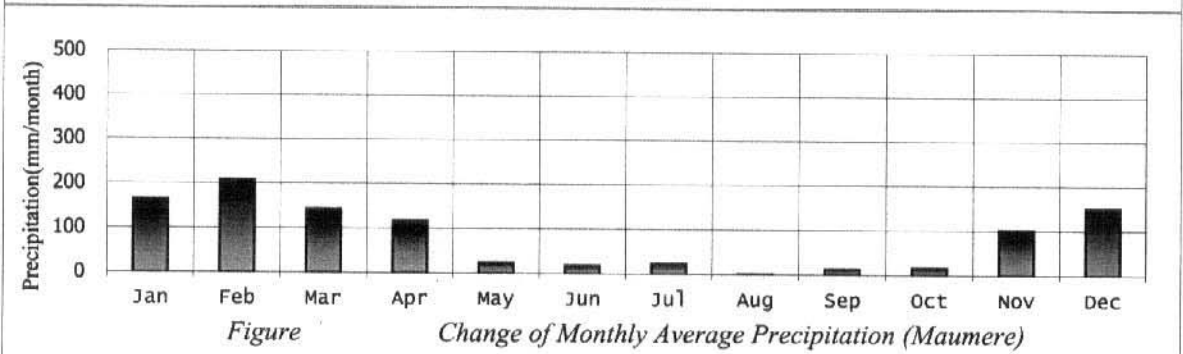
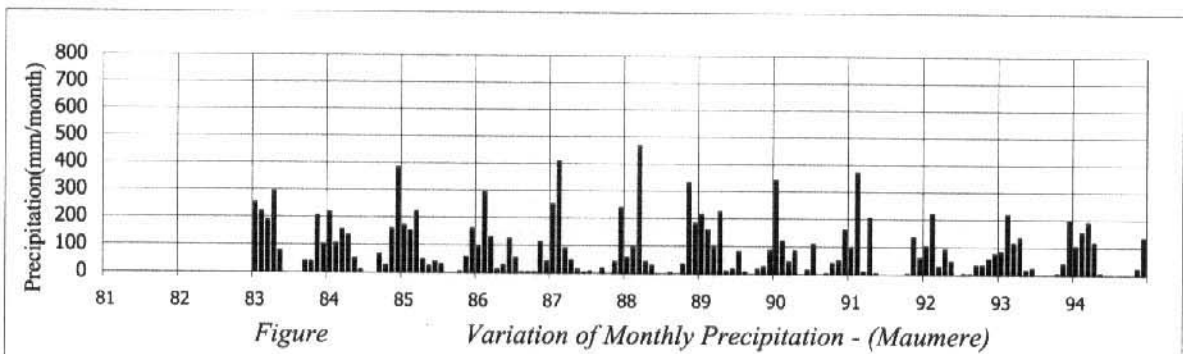
Station: Maumere

Latitude: 08° 38' S

Longitude: 122° 21' E

Altitude: 25 m

	Jan	Feb	Mar	Apr	May	Jun	Jul	Aug	Sep	Oct	Nov	Dec	Total
1981													
1982													
1983	252	219	188	292	76	0	0	0	39	38	204	100	1,408
1984	218	102	153	133	48	7	0	0	64	25	156	382	1,288
1985	169	151	221	46	22	37	29	0	0	3	56	158	892
1986	93	291	128	10	26	122	52	2	2	2	111	41	880
1987	248	408	88	45	12	2	6	0	17	0	40	235	1,101
1988	55	95	463	40	27	0	0	2	0	33	330	180	1,225
1989	213	158	98	223	8	15	80	6	0	15	25	84	925
1990	339	118	43	83	0	14	108	0	1	39	48	159	952
1991	96	368	8	204	3	0	0	0	0	1	134	59	873
1992	101	219	28	89	46	0	2	1	32	33	55	74	680
1993	83	216	113	132	16	22	0	0	0	4	38	197	821
1994	103	152	187	115	4	0	0	0	0	0	22	132	715
Average	164	208	143	118	24	18	23	1	13	16	102	150	980



Monthly Precipitation - (Larantuka)

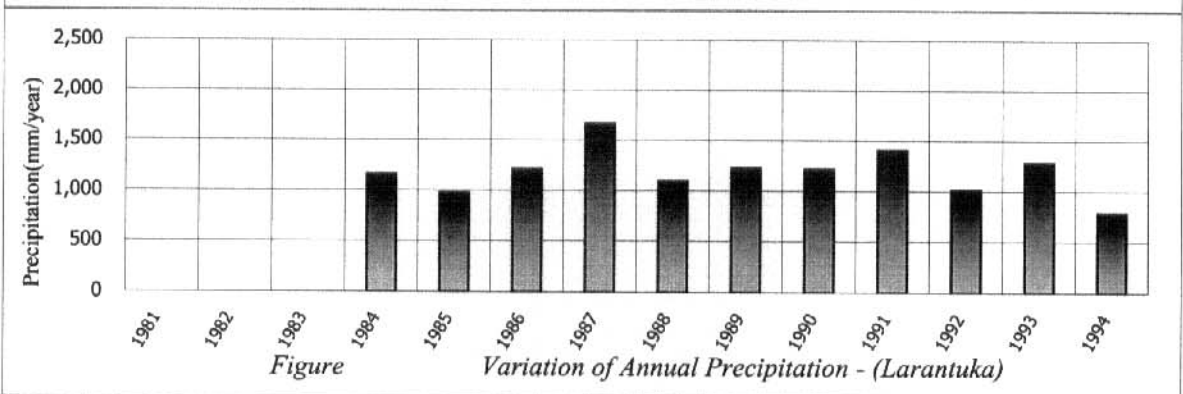
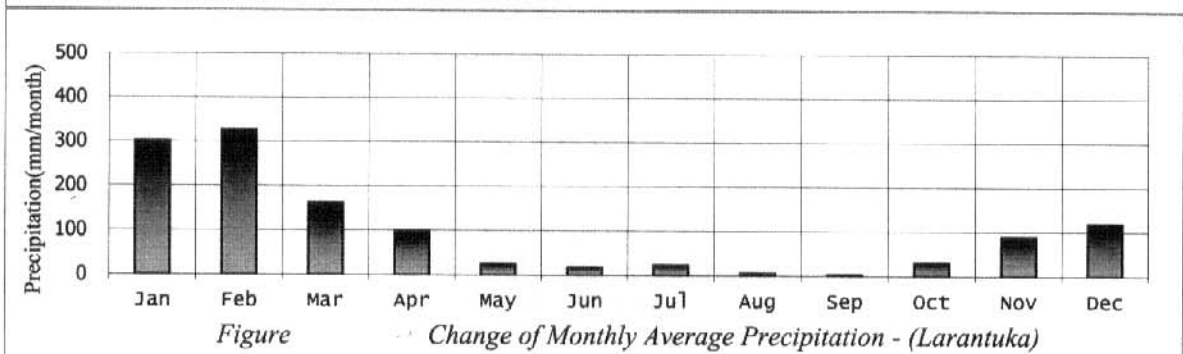
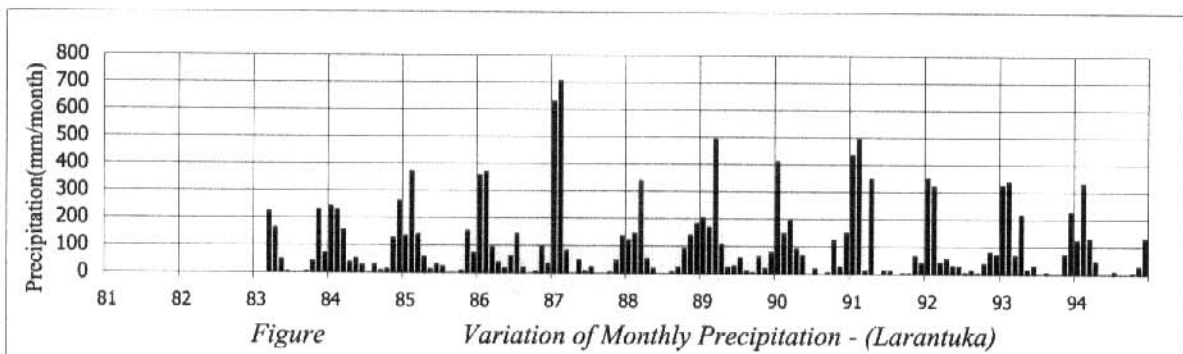
Station: Larantuka

Latitude: 08° 17' S

Longitude: 123° 00' E

Altitude: 9 m

	Jan	Feb	Mar	Apr	May	Jun	Jul	Aug	Sep	Oct	Nov	Dec	Total
1981													
1982													
1983			222	160	46	2	0	0	2	40	227	69	
1984	241	227	154	36	49	25	0	27	6	10	124	260	1,159
1985	132	369	137	54	10	28	21	0	0	5	150	69	975
1986	355	366	91	36	14	59	140	18	0	3	94	32	1,208
1987	629	703	80	0	46	6	21	0	0	1	44	134	1,664
1988	120	142	337	51	15	0	0	4	21	88	138	181	1,097
1989	200	167	491	104	21	26	55	8	2	60	17	75	1,226
1990	409	145	195	88	66	0	17	0	3	122	25	147	1,217
1991	435	493	11	346	0	11	8	0	1	1	63	39	1,408
1992	350	318	40	53	28	25	3	10	2	36	77	69	1,011
1993	323	335	66	214	13	29	0	4	0	0	71	224	1,279
1994	121	329	126	45	0	0	7	0	0	2	25	128	783
Average	301	327	163	99	26	18	23	6	3	31	88	119	1,202



Monthly Precipitation - (Waingapu)

Station: Waingapu

Latitude: 09° 40' S

Longitude: 120° 20' E

Altitude: 10 m

	Jan	Feb	Mar	Apr	May	Jun	Jul	Aug	Sep	Oct	Nov	Dec	Total
1981	308	214	100	25	133	12	34	0	8	0	137	230	1,201
1982	57	185	128	32	3	2	0	0	0	0	17	71	495
1983	96	140	335	141	43	0	0	0	0	7	52	35	849
1984	207	163	107	158	53	7	0	0	2	46	8	264	1,015
1985	191	76	114	106	16	98	8	0	0	0	102	128	839
1986	167	274	194	76	16	47	44	0	5	26	2	97	948
1987	243	131	9	4	63	1	1	6	0	0	94	34	586
1988	244	68	222	51	12	0	1	3	0	0	82	173	856
1989	159	102	188	91	29	23	18	3	0	1	26	101	741
1990	227	65	171	80	39	0	0	0	4	0	0	178	764
1991	242	206	126	137	3	0	11	0	0	0	100	82	907
1992	178	276	93	23	22	0	0	0	2	0	72	44	710
1993	109	167	105	44	0	48	0	0	0	1	1	172	647
1994	68	133	318	39	0	0	0	0	0	0	0	100	658
Average	178	157	158	72	31	17	8	1	2	6	50	122	801

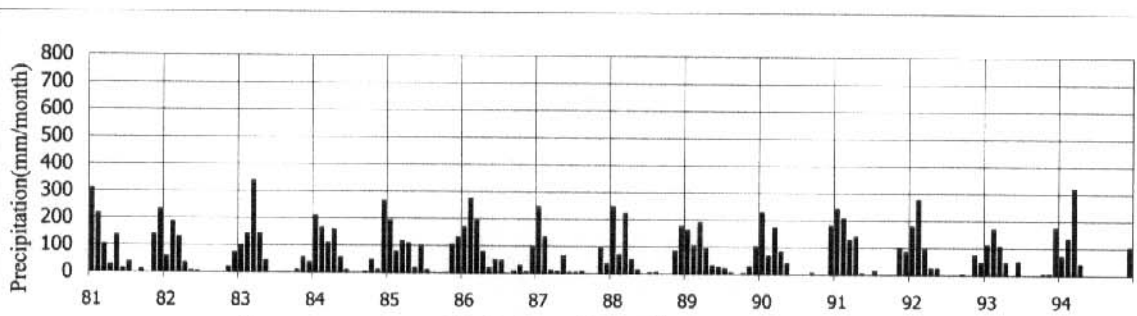


Figure - Variation of Monthly Precipitation - (Waingapu)

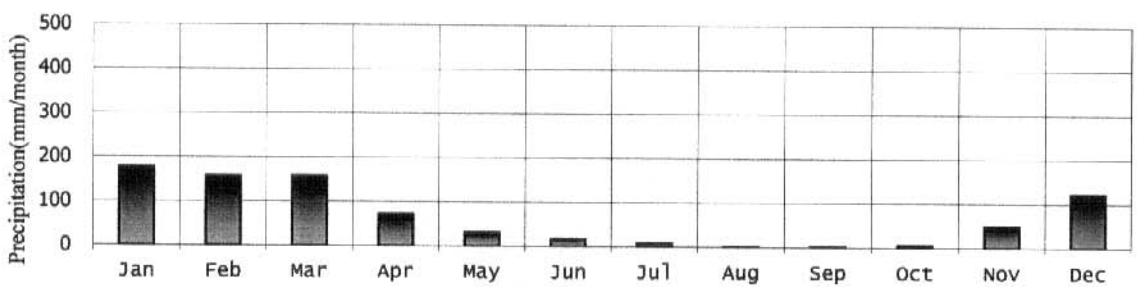


Figure Change of Monthly Average Precipitation - (Waingapu)

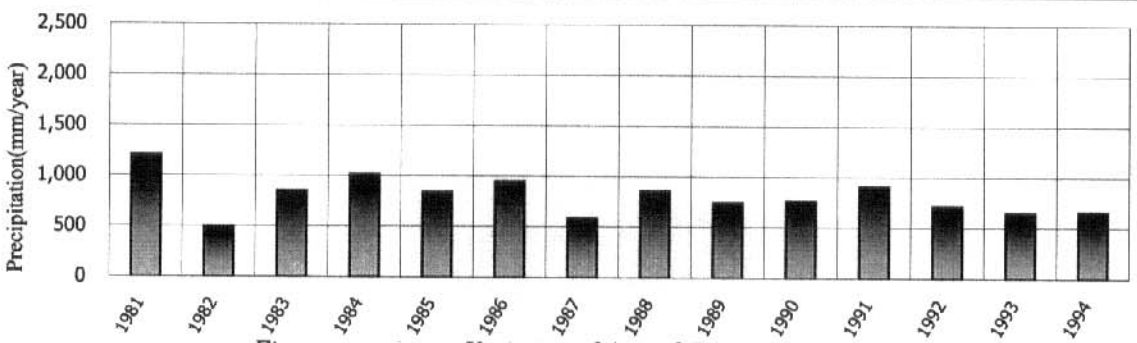


Figure Variation of Annual Precipitation - (Waingapu)

Monthly Precipitation - (Baa)

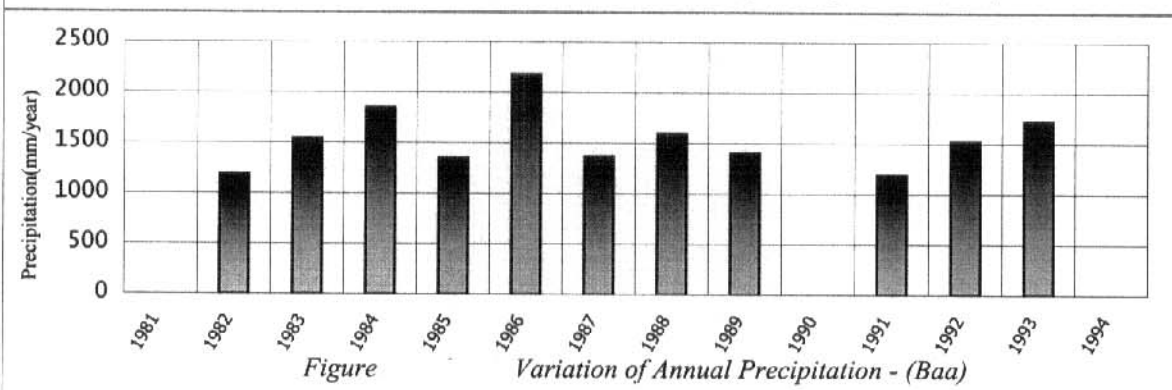
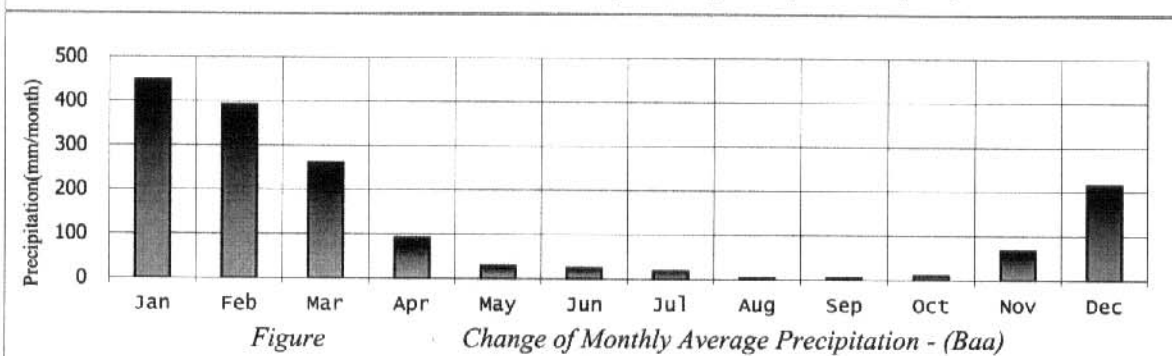
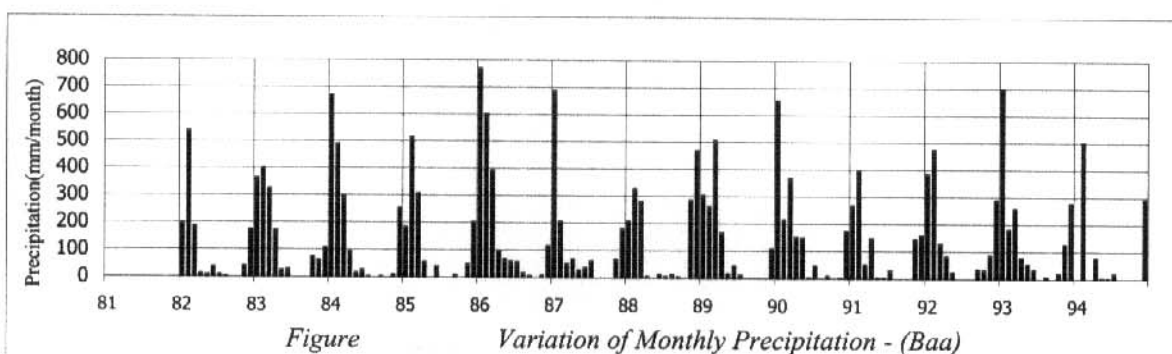
Station: Baa

Latitude: 10° 32' S

Longitude: 122° 50' E

Altitude: 139 m

	Jan	Feb	Mar	Apr	May	Jun	Jul	Aug	Sep	Oct	Nov	Dec	Total
1981													
1982	195	535	185	11	8	36	9	3	0	0	39	173	1,194
1983	362	399	322	169	24	27	0	0	0	73	62	107	1,545
1984	670	488	299	93	15	26	1	0	1	0	9	253	1,855
1985	183	514	307	55	0	39	0	0	8	0	47	201	1,354
1986	769	601	392	96	67	58	56	16	4	0	6	114	2,179
1987	686	204	49	67	26	34	59	0	0	0	66	178	1,369
1988	206	326	279	4	0	12	4	11	3	0	284	468	1,597
1989	303	261	505	164	15	44	10	0	0	0	0	106	1,408
1990	653	214	365	149	147	2	46		8	0	1	173	
1991	266	395	50	147	3	2	29	0	0	0	144	159	1,195
1992	382	474	126	81	23	0	0	0	34	31	84	288	1,523
1993	700	181	256	76	52	33	0	7	0	19	125	277	1,726
1994		501		75	2	1	18	0			0	292	
Average	448	392	261	91	29	24	18	3	5	10	67	215	1,563



Monthly Precipitation - (Kupang)

Station: Kupang

Latitude: 10° 11' S

Longitude: 123° 34' E

Altitude: 102 m

	Jan	Feb	Mar	Apr	May	Jun	Jul	Aug	Sep	Oct	Nov	Dec	Total
1981	570	436	262	14	44	29	11	0	42	4	293	676	2,381
1982	446	452	233	40	7	4	14	0	0	0	77	162	1,435
1983	406	420	238	197	50	0	0	0	0	58	109	114	1,592
1984	602	483	259	21	12	1	3	0	29	34	51	416	1,911
1985	197	184	124	53	0	5	15	0	0	14	114	167	873
1986	666	302	134	43	15	50	82	0	0	7	79	253	1,631
1987	691	386	53	25	39	1	12	0	0	0	120	295	1,622
1988	413	306	291	26	4	0	0	0	9	5	335	285	1,674
1989	294	169	458	97	45	36	15	0	0	7	26	236	1,383
1990	405	343	281	121	8	0	0	0	0	0	65	289	1,512
1991	501	505	69	430	1	2	0	0	0	0	193	75	1,776
1992	324	701	222	143	20	0	0	1	11	30	90	162	1,704
1993	706	270	185	18	2	30	2	0	0	3	20	171	1,407
1994	253	392	186	209	0	0	0	0	0	0	50	137	1,227
Average	462	382	214	103	18	11	11	0	7	12	116	246	1,581

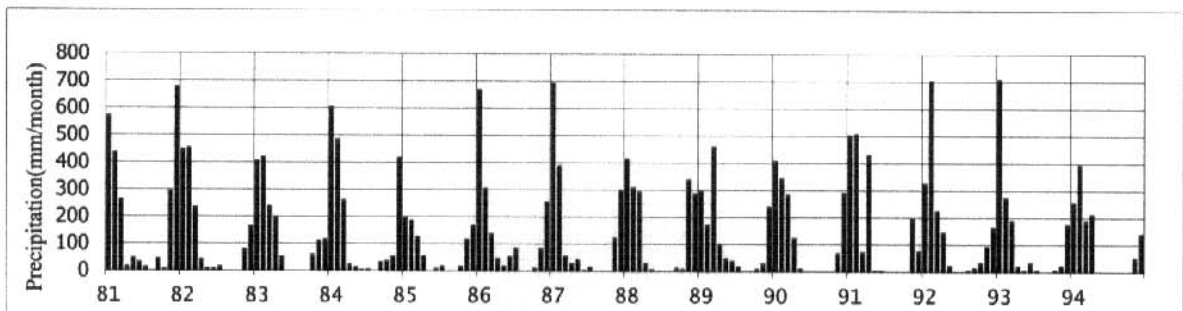


Figure Variation of Monthly Precipitation - (Kupang)

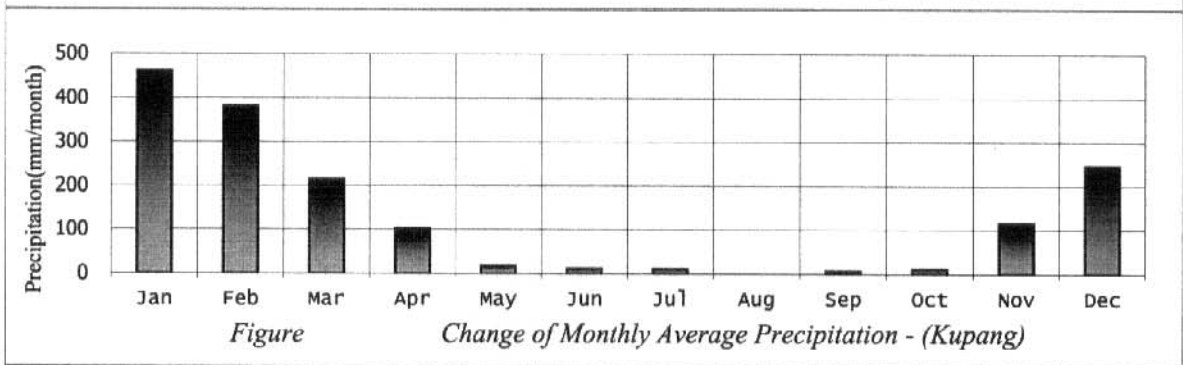


Figure Change of Monthly Average Precipitation - (Kupang)

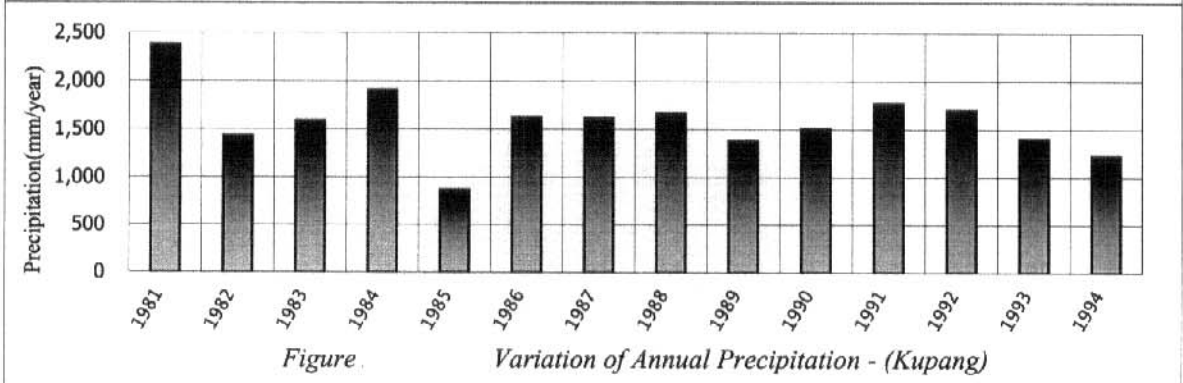


Figure Variation of Annual Precipitation - (Kupang)

Monthly Average Temperature - (Ampenan)

Station: Ampenan

Latitude: 08° 32' S

Longitude: 116° 04' E

Altitude: 16 m

	Jan	Feb	Mar	Apr	May	Jun	Jul	Aug	Sep	Oct	Nov	Dec	Average
1981													
1982	26.6	26.8	26.3	26.1	25.7	25.2	24.1	24.3	25.2	26.3	27.3	27.1	25.9
1983	27.1	26.9	27.6	27.3	26.0	25.5	25.0	25.0	26.2	26.7	26.5	26.4	26.4
1984	26.0	26.2	26.0	26.0	25.7	25.0	24.9	24.9	25.5	26.5	26.7	26.4	25.8
1985	26.9	26.3	26.4	26.5	26.2	25.4	24.4	25.1	25.7	26.6	26.7	26.9	26.1
1986	26.4	26.1	26.1	26.5	26.3	25.5	24.8	24.8	25.8	26.1	26.4	27.0	26.0
1987	26.3	26.6	26.3	26.6	26.1	25.5	24.6	24.7	25.6	27.3	26.9	26.5	26.1
1988	26.1	26.7	27.1	26.6	26.7	25.4	25.0	25.5	26.2	26.6	26.6	26.7	26.3
1989	26.1	26.2	25.8	26.3	25.8	25.7	25.4	24.9	25.9	26.7	26.5	26.6	26.0
1990	26.2	26.4	26.8	26.6	26.4	25.4	25.0	24.8	25.5	27.1	27.5	27.2	26.2
1991	26.7	26.6	26.3	26.6	25.8	24.9	24.3	24.2	25.5	26.3	26.6	26.6	25.9
1992	26.7	26.7	26.3	26.5	26.4	25.3	24.8	25.1	26.0	26.1	26.7	26.7	26.1
1993	26.9	26.6	26.6	26.5	26.2	25.7	24.3	24.8	25.5	26.5	27.4	27.2	26.2
1994	26.2	26.8	25.9	26.2	25.3	24.6	23.9	24.2	24.8	26.5	27.6	27.1	25.8
Average	26.5	26.5	26.4	26.5	26.0	25.3	24.7	24.8	25.6	26.6	26.9	26.8	26.1

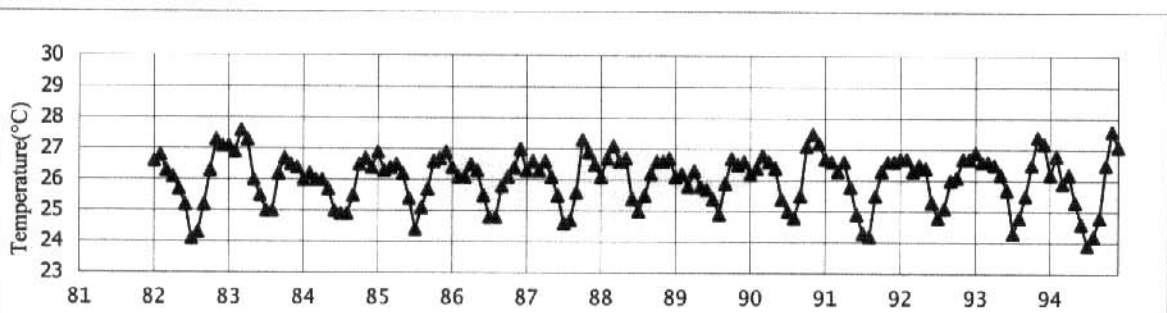


Figure Variation of Monthly Average Temperature - (Ampenan)

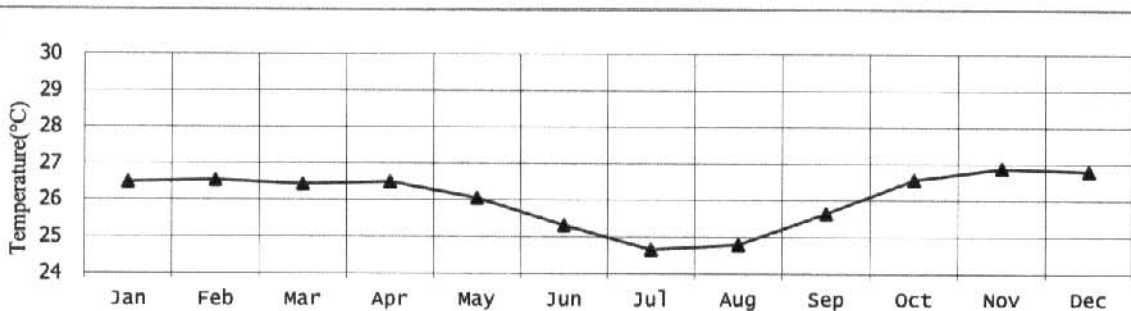


Figure Change of Monthly Average Temperature - (Ampenan)

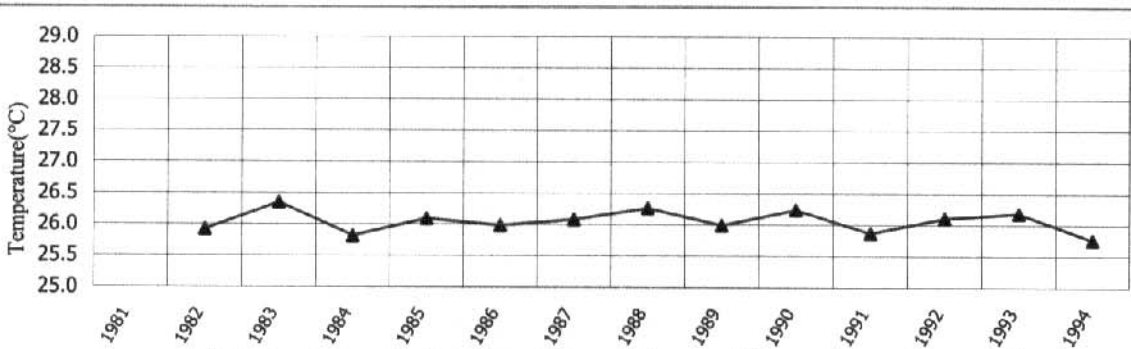


Figure Variation of Annual Average Temperature - (Ampenan)

Monthly Average Temperature - (Sumbawa Besar)

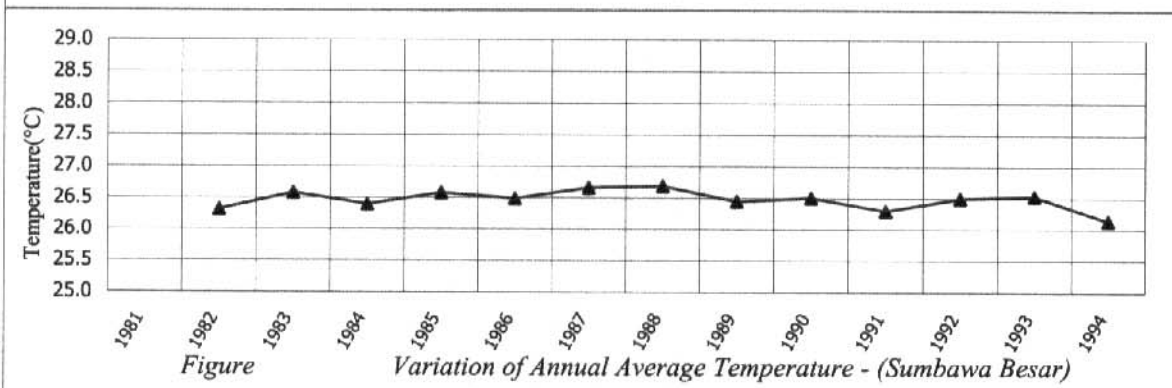
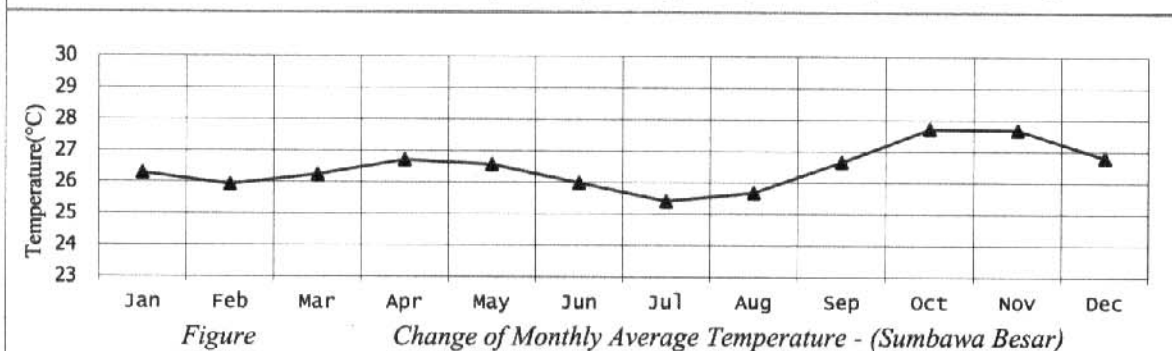
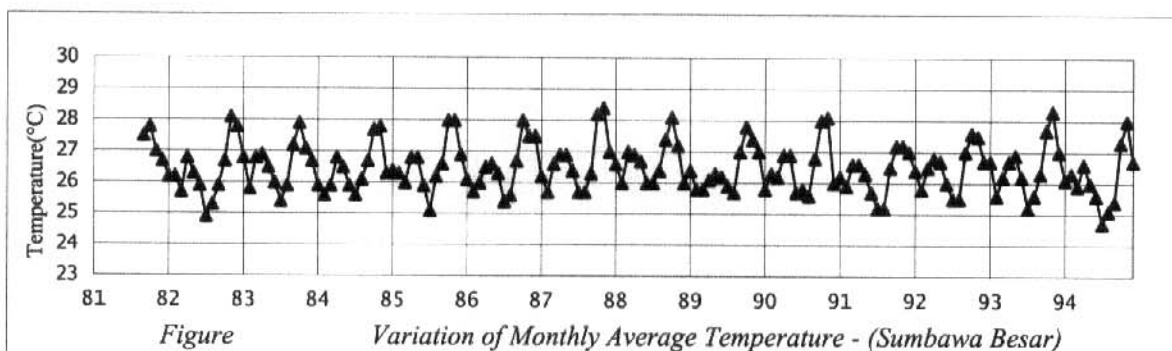
Station: Sumbawa Besar

Latitude: 08° 25' S

Longitude: 117° 30' E

Altitude: 3 m

	Jan	Feb	Mar	Apr	May	Jun	Jul	Aug	Sep	Oct	Nov	Dec	Average
1981									27.5	27.8	27.0	26.7	
1982	26.2	26.2	25.7	26.8	26.3	25.9	24.9	25.3	25.9	26.7	28.1	27.8	26.3
1983	26.8	25.8	26.8	26.9	26.5	26.0	25.4	25.9	27.2	27.9	27.1	26.7	26.6
1984	25.9	25.6	25.9	26.8	26.5	25.9	25.6	26.1	26.7	27.7	27.8	26.3	26.4
1985	26.4	26.3	26.0	26.8	26.8	25.9	25.1	26.2	26.6	28.0	28.0	26.9	26.6
1986	26.1	25.7	26.0	26.5	26.6	26.3	25.4	25.6	26.7	28.0	27.5	27.5	26.5
1987	26.2	25.7	26.6	26.9	26.9	26.4	25.7	25.7	26.3	28.2	28.4	27.0	26.7
1988	26.6	26.0	27.0	26.9	26.7	26.0	26.0	26.4	27.4	28.1	27.2	26.0	26.7
1989	26.4	25.8	25.8	26.1	26.3	26.2	25.9	25.7	27.0	27.8	27.4	27.0	26.5
1990	25.8	26.3	26.2	26.9	26.9	25.7	25.8	25.6	26.8	28.0	28.1	26.0	26.5
1991	26.2	25.9	26.6	26.6	26.3	25.7	25.2	25.2	26.5	27.2	27.2	27.0	26.3
1992	26.4	25.8	26.5	26.8	26.7	26.0	25.5	25.5	27.0	27.6	27.5	26.7	26.5
1993	26.7	25.6	26.2	26.7	26.9	26.2	25.2	25.6	26.3	27.7	28.3	27.0	26.5
1994	26.1	26.3	25.9	26.6	26.0	25.6	24.7	25.1	25.4	27.3	28.0	26.7	26.1
Average	26.3	25.9	26.2	26.7	26.6	26.0	25.4	25.7	26.7	27.7	27.7	26.8	26.5



Monthly Average Temperature - (Bima)

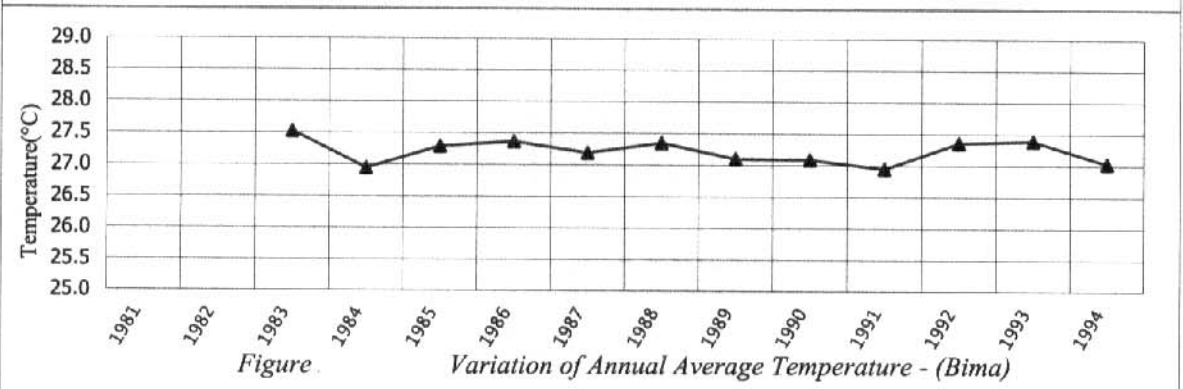
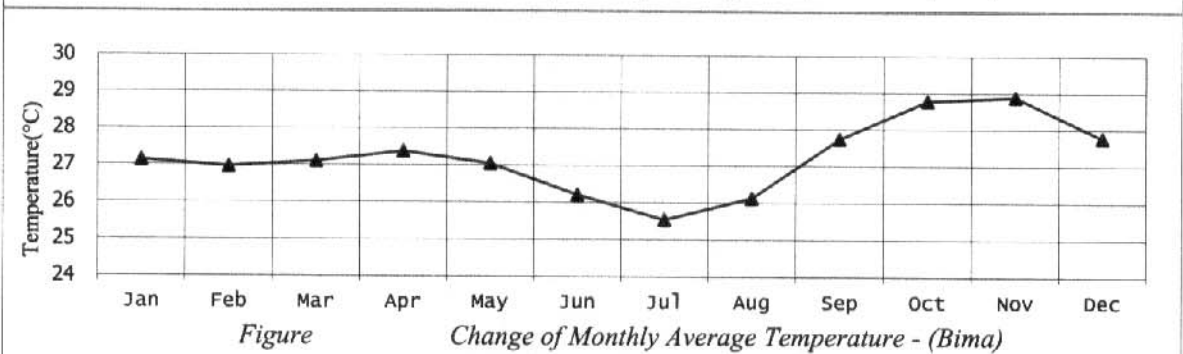
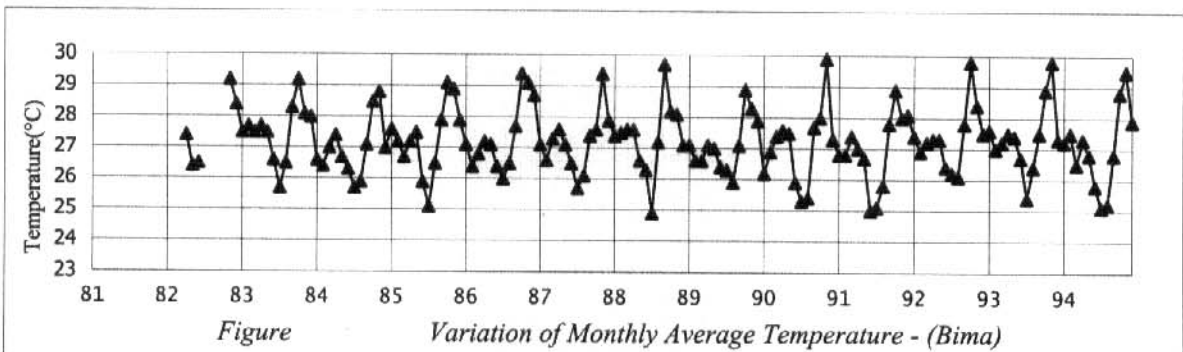
Station: Bima

Latitude: 08° 33' S

Longitude: 118° 42' E

Altitude: 0.8 m

	Jan	Feb	Mar	Apr	May	Jun	Jul	Aug	Sep	Oct	Nov	Dec	Average
1981													
1982				27.4	26.4	26.5					29.2	28.4	
1983	27.5	27.7	27.5	27.7	27.5	26.6	25.7	26.5	28.3	29.2	28.1	28.0	27.5
1984	26.6	26.4	27.0	27.4	26.7	26.3	25.7	25.9	27.1	28.5	28.8	27.0	27.0
1985	27.6	27.2	26.7	27.2	27.5	25.9	25.1	26.5	27.9	29.1	28.9	27.9	27.3
1986	27.1	26.4	26.8	27.2	27.1	26.4	26.0	26.5	27.7	29.4	29.1	28.7	27.4
1987	27.1	26.6	27.3	27.6	27.1	26.5	25.7	26.1	27.4	27.6	29.4	27.9	27.2
1988	27.4	27.5	27.6	27.6	26.6	26.3	24.9	27.2	29.7	28.2	28.1	27.1	27.4
1989	27.1	26.6	26.6	27.1	27.0	26.4	26.3	25.9	27.1	28.9	28.3	27.9	27.1
1990	26.2	26.9	27.4	27.6	27.5	25.9	25.3	25.4	27.7	28.0	29.9	27.3	27.1
1991	26.8	26.8	27.4	27.0	26.7	25.0	25.1	25.8	27.8	28.9	28.0	28.1	27.0
1992	27.4	26.9	27.2	27.3	27.3	26.4	26.2	26.1	27.8	29.8	28.4	27.5	27.4
1993	27.6	27.0	27.2	27.5	27.4	26.7	25.4	26.4	27.5	28.9	29.8	27.3	27.4
1994	27.2	27.5	26.5	27.3	26.8	25.8	25.1	25.2	26.8	28.8	29.5	27.9	27.0
Average	27.1	27.0	27.1	27.4	27.0	26.2	25.5	26.1	27.7	28.8	28.9	27.8	27.2



Monthly Average Temperature - (Maumere)

Station: Maumere

Latitude: 08° 38' S

Longitude: 122° 21' E

Altitude: 25 m

	Jan	Feb	Mar	Apr	May	Jun	Jul	Aug	Sep	Oct	Nov	Dec	Average
1981													
1982													
1983	28.3	27.7	27.7	27.2	27.1	26.6	26.2	26.5	27.9	28.7	28.9	28.2	27.6
1984	26.7	26.5	27.0	27.6	27.5	26.9	26.2	26.8	27.8	29.2	29.3	27.2	27.4
1985	27.3	26.1	27.2	27.6	27.8	26.0	25.8	26.6	27.7	29.0	29.4	28.5	27.4
1986	26.9	26.4	27.4	27.9	27.7	26.8	27.2	26.5	28.0	28.6	29.2	29.6	27.7
1987	27.0	26.1	28.0	28.4	28.4	27.7	26.8	27.1	28.0	29.6	30.1	28.6	28.0
1988	28.2	28.8	28.9	29.1	28.1	27.0	27.5	27.9	28.6	30.0	28.0	27.4	28.3
1989	27.7	26.8	26.7	27.4	27.2	26.8	26.9	26.3	27.9	29.4	30.0	29.3	27.7
1990	26.7	27.4	28.2	27.5	28.0	26.8	26.7	26.3	27.3	29.2	30.1	28.1	27.7
1991	27.4	26.5	27.8	27.5	27.5	26.9	26.3	26.5	27.6	28.8	28.7	28.7	27.5
1992	27.8	27.2	27.9	28.4	28.5	27.9	27.4	27.3	28.3	29.5	29.4	28.3	28.2
1993	28.0	26.8	27.8	27.5	28.0	27.6	26.7	26.9	27.8	28.9	30.0	28.5	27.9
1994	27.6	27.5	27.1	27.8	27.3	26.9	26.2	26.5	27.2	28.2	29.5	28.2	27.5
Average	27.5	27.0	27.6	27.8	27.8	27.0	26.7	26.8	27.8	29.1	29.4	28.4	27.7

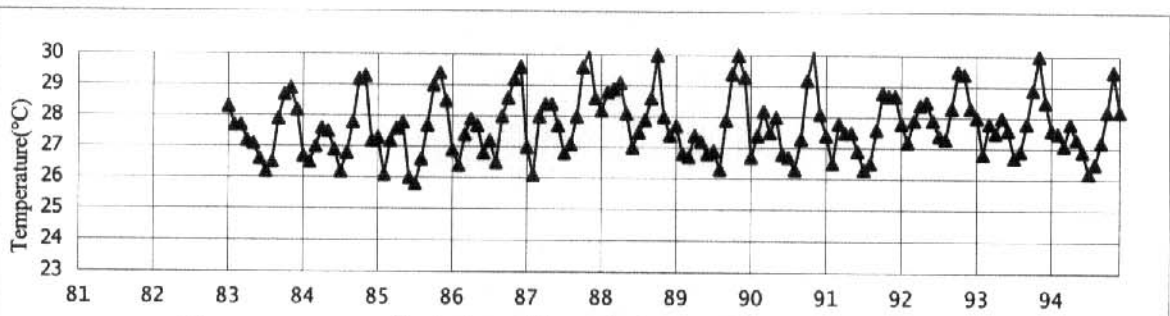


Figure Variation of Monthly Average Temperature - (Maumere)

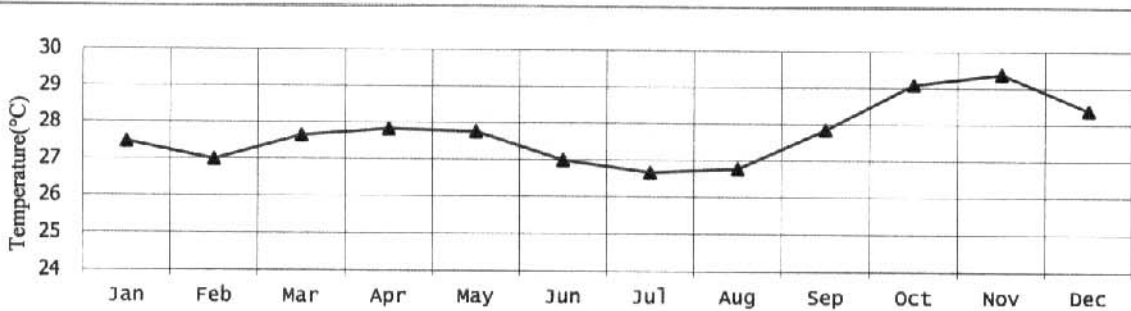


Figure Change of Monthly Average Temperature - (Maumere)

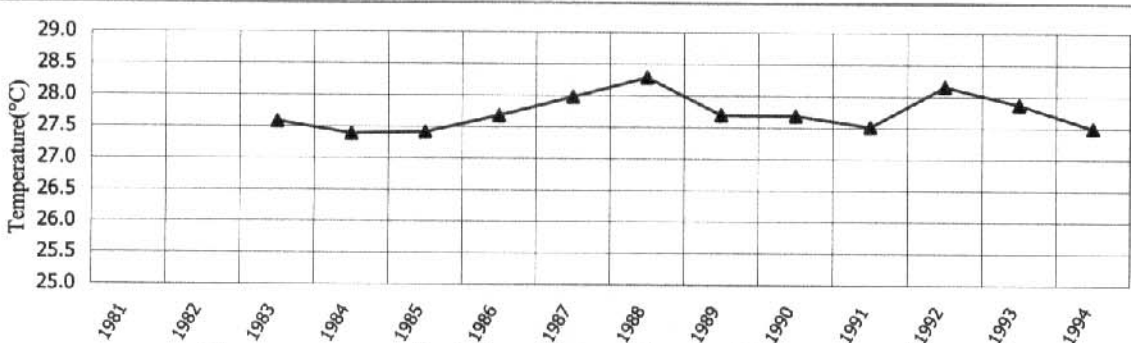


Figure Variation of Annual Average Temperature - (Maumere)

Monthly Average Temperature - (Larantuka)

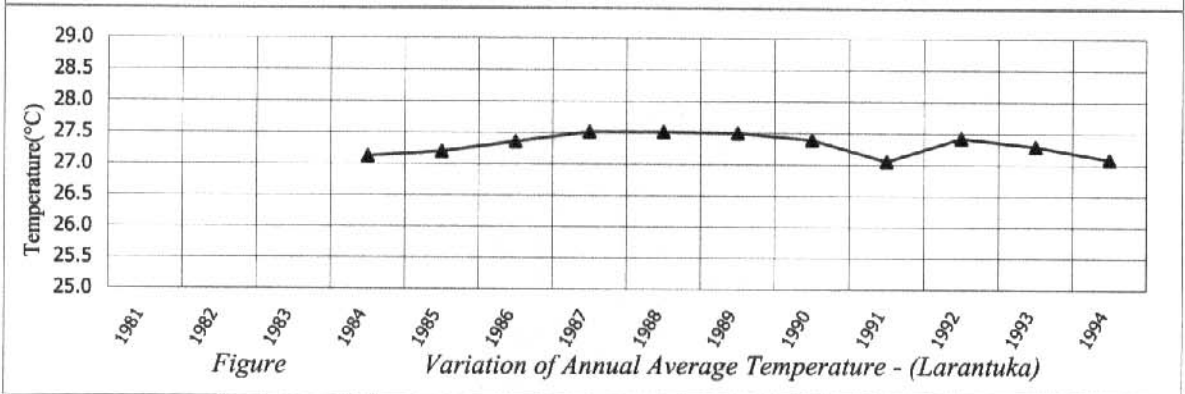
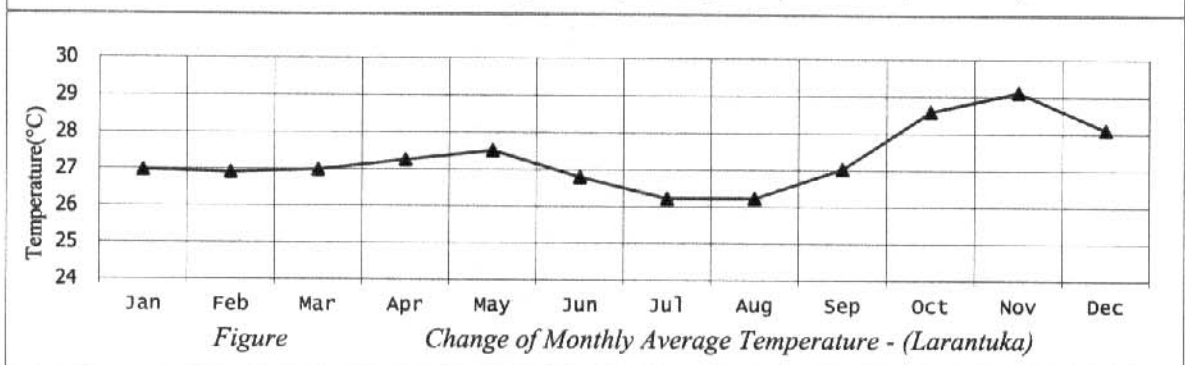
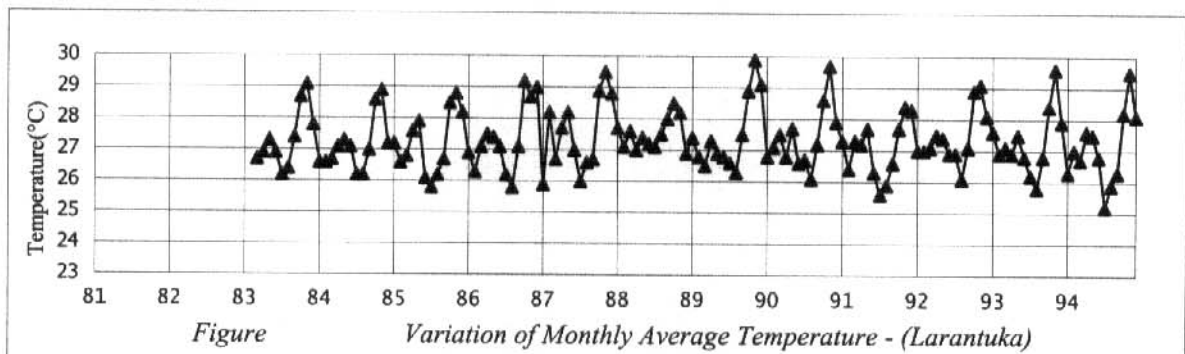
Station: Larantuka

Latitude: 08° 17' S

Longitude: 123° 00' E

Altitude: 9 m

	Jan	Feb	Mar	Apr	May	Jun	Jul	Aug	Sep	Oct	Nov	Dec	Average
1981													
1982													
1983			26.7	26.9	27.3	26.9	26.2	26.4	27.4	28.7	29.1	27.8	
1984	26.6	26.6	26.7	27.1	27.3	27.1	26.2	26.2	27.0	28.6	28.9	27.2	27.1
1985	27.2	26.6	26.8	27.6	27.9	26.1	25.8	26.2	26.7	28.5	28.8	28.2	27.2
1986	26.9	26.3	27.1	27.5	27.4	27.1	26.2	25.8	27.1	29.2	28.7	29	27.4
1987	25.9	28.2	26.7	27.7	28.2	27.0	26.0	26.6	26.7	28.9	29.5	28.8	27.5
1988	27.7	27.1	27.6	27.0	27.4	27.2	27.1	27.5	28.0	28.5	28.2	26.9	27.5
1989	27.4	26.8	26.5	27.3	26.9	26.8	26.6	26.3	27.5	28.9	29.9	29.1	27.5
1990	26.8	27.1	27.5	26.8	27.7	26.6	26.7	26.1	27.2	28.6	29.7	27.9	27.4
1991	27.3	26.4	27.3	27.2	27.7	26.3	25.6	25.9	26.6	27.7	28.4	28.3	27.1
1992	27.0	27.0	27.1	27.5	27.4	26.9	26.9	26.1	27.1	28.9	29.1	28.1	27.4
1993	27.6	26.9	27.1	26.9	27.5	26.8	26.2	25.8	26.8	28.4	29.6	27.9	27.3
1994	26.3	27.0	26.7	27.6	27.5	26.8	25.2	25.9	26.3	28.2	29.5	28.1	27.1
Average	27.0	26.9	27.0	27.3	27.5	26.8	26.2	26.2	27.0	28.6	29.1	28.1	27.3



Monthly Average Temperature - (Waingapu)

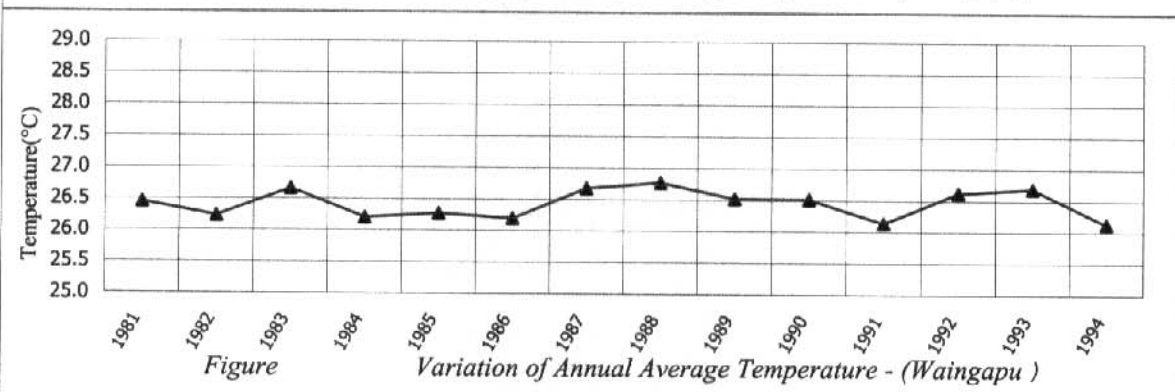
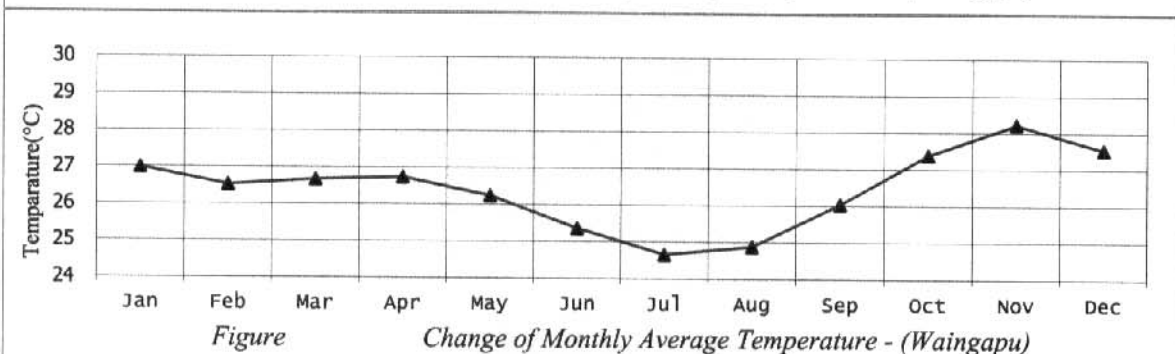
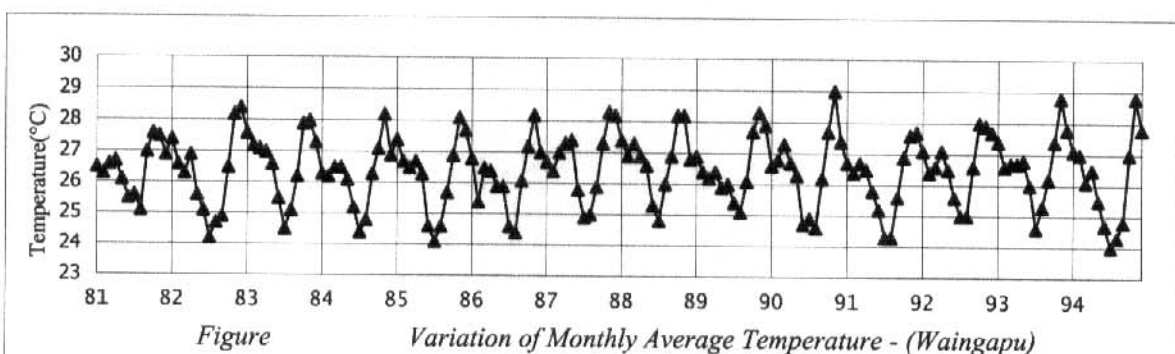
Station: Waingapu

Latitude: 09° 40' S

Longitude: 120° 20' E

Altitude: 10 m

	Jan	Feb	Mar	Apr	May	Jun	Jul	Aug	Sep	Oct	Nov	Dec	Average
1981	26.5	26.3	26.6	26.7	26.1	25.5	25.6	25.1	27.0	27.6	27.5	26.9	26.5
1982	27.4	26.6	26.3	26.9	25.6	25.1	24.2	24.7	24.9	26.5	28.2	28.4	26.2
1983	27.6	27.2	27.1	27.0	26.6	25.5	24.5	25.1	26.2	27.9	28.0	27.3	26.7
1984	26.3	26.2	26.5	26.5	26.1	25.2	24.4	24.8	26.3	27.1	28.2	26.9	26.2
1985	27.4	26.7	26.5	26.7	26.3	24.6	24.1	24.6	25.7	26.9	28.1	27.7	26.3
1986	26.8	25.4	26.5	26.4	25.9	25.9	24.6	24.4	26.1	27.2	28.2	27.0	26.2
1987	26.7	26.4	27.0	27.3	27.4	25.8	24.9	25.0	25.9	27.3	28.3	28.2	26.7
1988	27.4	26.9	27.3	26.9	26.6	25.3	24.8	26.0	26.9	28.2	28.2	26.8	26.8
1989	26.9	26.4	26.2	26.4	25.9	26.0	25.4	25.1	26.1	27.7	28.3	27.9	26.5
1990	26.6	26.8	27.3	26.7	26.3	24.7	24.9	24.6	26.2	27.7	29.0	27.4	26.5
1991	26.7	26.4	26.7	26.5	25.8	25.2	24.3	24.3	25.6	26.9	27.6	27.7	26.1
1992	27.1	26.4	26.6	27.1	26.5	25.6	25.0	25.0	26.6	28.0	27.9	27.7	26.6
1993	27.4	26.6	26.7	26.7	26.8	26.0	24.6	25.3	26.2	27.4	28.8	27.8	26.7
1994	27.1	27.0	26.1	26.5	25.5	24.7	24.0	24.3	24.8	27.0	28.8	27.8	26.1
Average	27.0	26.5	26.7	26.7	26.2	25.4	24.7	24.9	26.0	27.4	28.2	27.5	26.4



Monthly Average Temperature - (Baa)

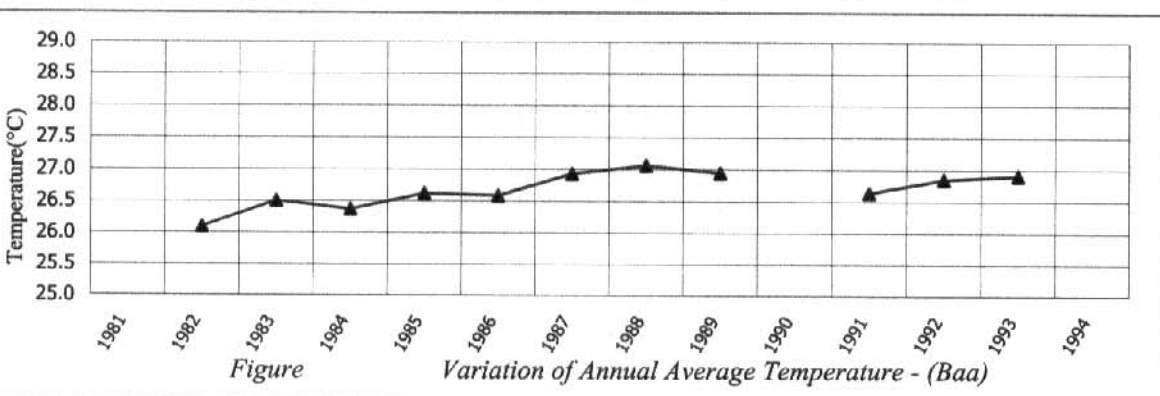
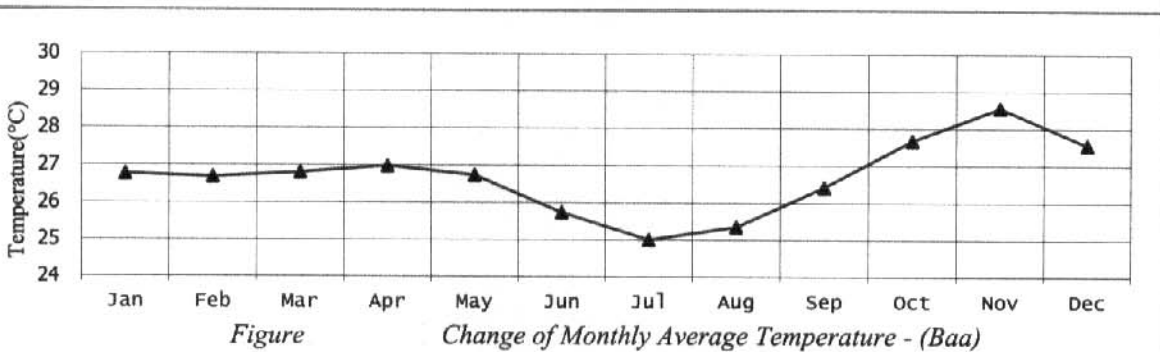
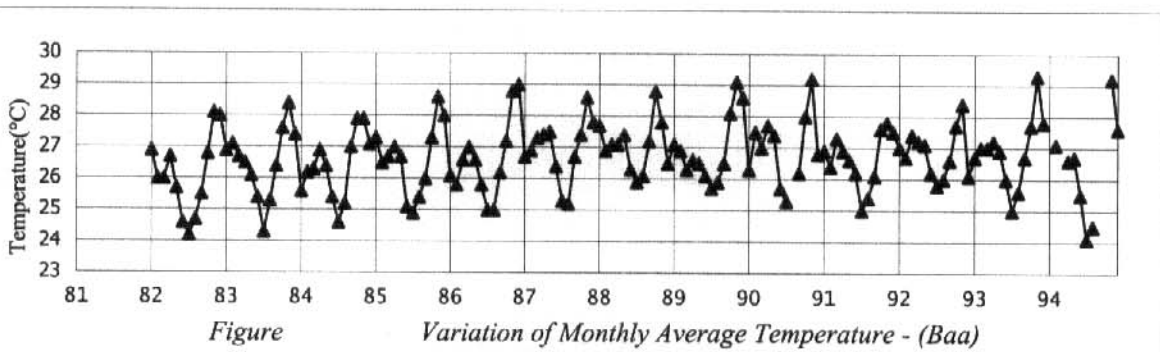
Station: Baa

Latitude: 10° 32' S

Longitude: 122° 50' E

Altitude: 139 m

	Jan	Feb	Mar	Apr	May	Jun	Jul	Aug	Sep	Oct	Nov	Dec	Average
1981													
1982	26.9	26.0	26.0	26.7	25.7	24.6	24.2	24.7	25.5	26.8	28.1	28.0	26.1
1983	26.9	27.1	26.7	26.5	26.1	25.4	24.3	25.3	26.4	27.6	28.4	27.4	26.5
1984	25.6	26.2	26.3	26.9	26.4	25.4	24.6	25.2	27.0	27.9	27.9	27.1	26.4
1985	27.3	26.5	26.7	27.0	26.7	25.1	24.9	25.4	26.0	27.3	28.6	28.0	26.6
1986	26.1	25.8	26.6	27.0	26.6	25.8	25.0	25.0	26.2	27.2	28.8	29.0	26.6
1987	26.7	26.9	27.3	27.4	27.5	26.4	25.3	25.2	26.7	27.4	28.6	27.8	26.9
1988	27.7	26.9	27.1	27.1	27.4	26.3	25.9	26.1	27.2	28.8	27.8	26.5	27.1
1989	27.1	26.9	26.3	26.6	26.5	26.1	25.7	25.9	26.5	28.1	29.1	28.6	27.0
1990	26.3	27.5	27.0	27.7	27.4	25.7	25.3		26.2	28.0	29.2	26.8	
1991	26.9	26.4	27.3	26.9	26.6	26.2	25.0	25.4	26.1	27.6	27.8	27.5	26.6
1992	27.0	26.7	27.4	27.2	27.1	26.2	25.8	26.0	26.6	27.7	28.4	26.1	26.9
1993	26.7	27.0	27.0	27.2	26.9	26.0	25.0	25.6	26.7	27.7	29.3	27.8	26.9
1994		27.1		26.6	26.7	25.5	24.1	24.5			29.2	27.6	
Average	26.8	26.7	26.8	27.0	26.7	25.7	25.0	25.4	26.4	27.7	28.6	27.6	26.7



Monthly Average Temperature - (Kupang)

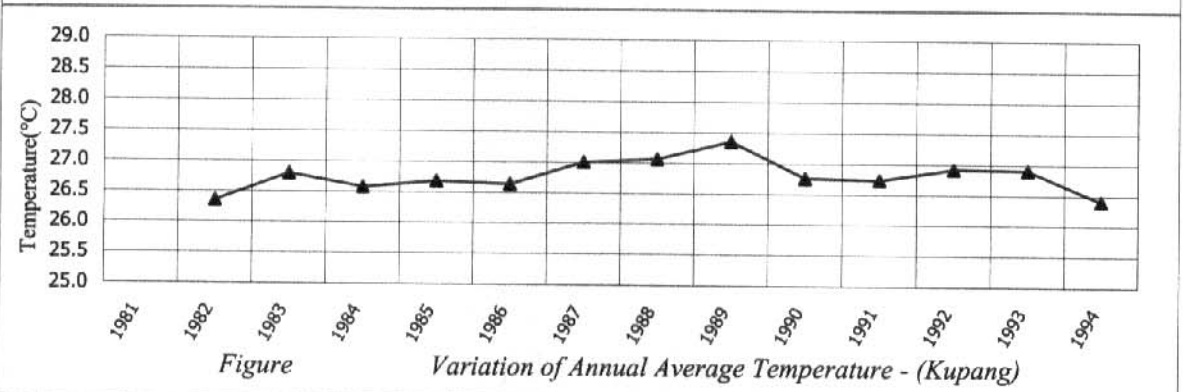
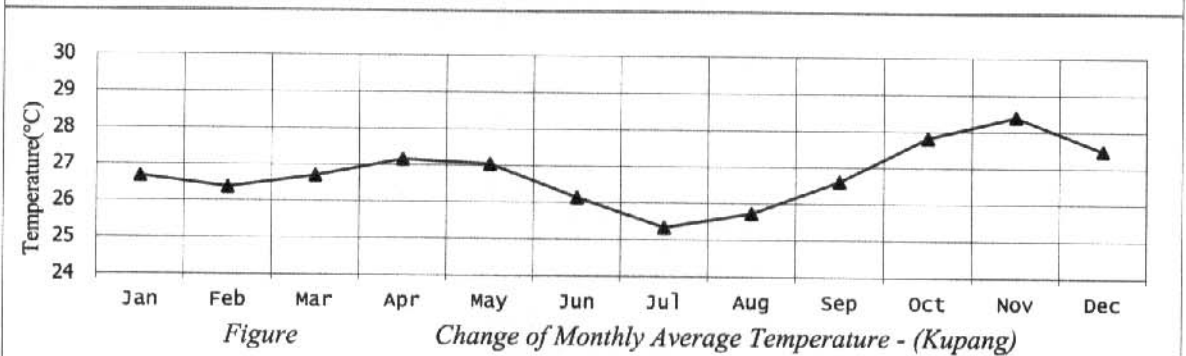
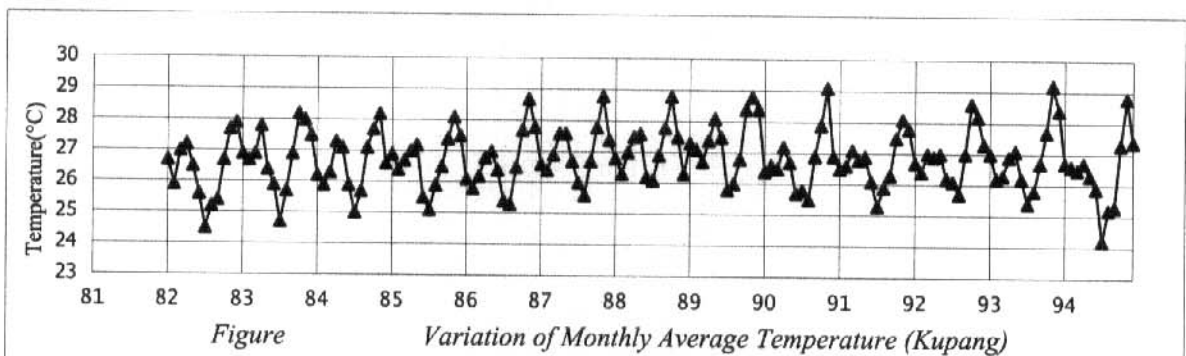
Station: Kupang

Latitude: 10° 11' S

Longitude: 123° 34' E

Altitude: 102 m

	Jan	Feb	Mar	Apr	May	Jun	Jul	Aug	Sep	Oct	Nov	Dec	Average
1981													
1982	26.7	25.9	27.0	27.2	26.5	25.6	24.5	25.2	25.4	26.7	27.7	27.9	26.4
1983	26.9	26.7	26.9	27.8	26.4	25.9	24.7	25.7	26.9	28.2	28.0	27.5	26.8
1984	26.2	25.9	26.3	27.3	27.1	25.9	25.0	25.7	27.1	27.7	28.2	26.6	26.6
1985	26.9	26.4	26.7	27.0	27.2	25.5	25.1	25.9	26.5	27.4	28.1	27.5	26.7
1986	26.1	25.8	26.2	26.8	27.0	26.4	25.4	25.3	26.5	27.7	28.7	27.8	26.6
1987	26.6	26.4	26.9	27.6	27.6	26.7	26.0	25.6	26.7	27.8	28.8	27.4	27.0
1988	26.8	26.3	27.0	27.5	27.6	26.2	26.1	26.9	27.8	28.8	27.5	26.3	27.1
1989	27.3	27.1	26.7	27.4	28.1	27.5	25.8	26.0	26.8	28.4	28.8	28.4	27.4
1990	26.4	26.6	26.5	27.2	26.7	25.7	25.8	25.5	26.9	27.9	29.1	26.9	26.8
1991	26.5	26.6	27.1	26.8	26.9	26.1	25.3	25.9	26.3	27.5	28.1	27.8	26.7
1992	26.7	26.4	27.0	26.9	27.0	26.2	26.1	25.7	27.0	28.6	28.2	27.3	26.9
1993	27.0	26.2	26.3	26.9	27.1	26.2	25.4	25.8	26.7	27.7	29.2	28.4	26.9
1994	26.7	26.6	26.5	26.7	26.3	25.9	24.2	25.2	25.3	27.3	28.8	27.4	26.4
Average	26.7	26.4	26.7	27.2	27.0	26.1	25.3	25.7	26.6	27.8	28.4	27.5	26.8



Potential Evapotranspiration - (Ampenan)

Station: Ampenan

Latitude: 08° 32' S

Longitude: 116° 04' E

Altitude: 16 m

	Jan	Feb	Mar	Apr	May	Jun	Jul	Aug	Sep	Oct	Nov	Dec	Total
1981													
1982	146.9	135.5	137.2	126.0	121.7	107.9	96.0	99.9	112.4	138.6	156.6	159.8	1538.5
1983	156.5	136.8	162.7	147.4	125.7	111.3	107.8	108.9	128.0	145.5	140.2	144.8	1615.8
1984	135.8	125.3	132.0	124.5	122.0	105.3	108.1	109.2	117.5	142.5	144.9	145.9	1513.0
1985	152.7	126.5	138.8	132.6	129.9	110.5	99.7	111.4	120.0	143.9	144.5	155.5	1566.1
1986	143.0	123.3	133.5	132.8	131.9	112.4	106.0	107.1	122.0	134.7	139.0	157.7	1543.4
1987	140.8	131.7	136.9	134.5	128.2	112.1	102.7	105.2	118.4	158.0	148.4	147.4	1564.3
1988	136.6	133.3	152.3	134.2	138.8	110.0	108.1	117.4	128.2	143.6	142.3	151.1	1595.8
1989	137.3	125.0	128.1	129.3	123.2	115.5	115.4	108.6	123.7	146.0	140.9	149.5	1542.5
1990	138.6	127.9	146.3	134.2	133.2	110.0	108.2	106.1	116.3	153.7	160.6	161.7	1596.9
1991	149.0	132.0	137.3	134.8	123.5	103.6	99.1	98.6	117.4	138.7	142.9	149.7	1526.6
1992	148.6	133.5	136.9	132.6	133.5	108.9	105.6	111.4	125.1	134.4	144.5	151.4	1566.3
1993	152.6	131.6	142.4	132.5	129.7	115.0	97.8	106.4	116.4	141.8	158.5	161.7	1586.5
1994	139.6	135.6	130.4	128.0	115.6	99.7	93.9	99.0	106.8	142.5	162.7	159.9	1513.7
Average	144.5	130.6	139.6	132.6	127.4	109.4	103.7	106.9	119.4	143.4	148.2	153.6	1559.2

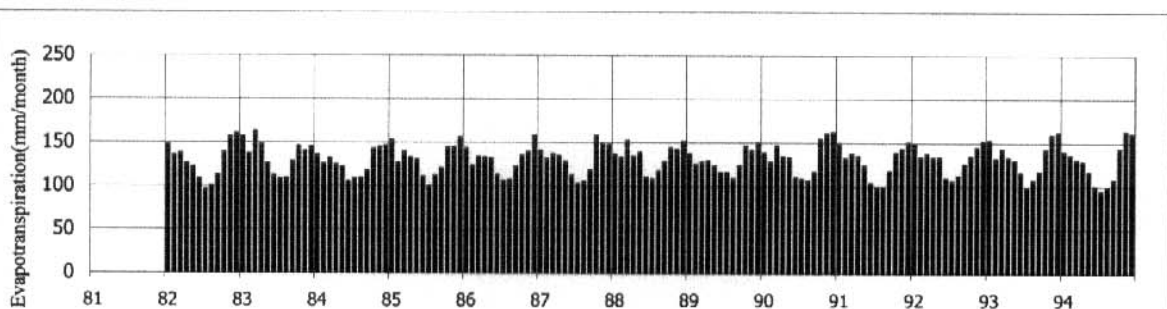


Figure. Variation of Monthly Potential Evapotranspiration - (Ampenan)

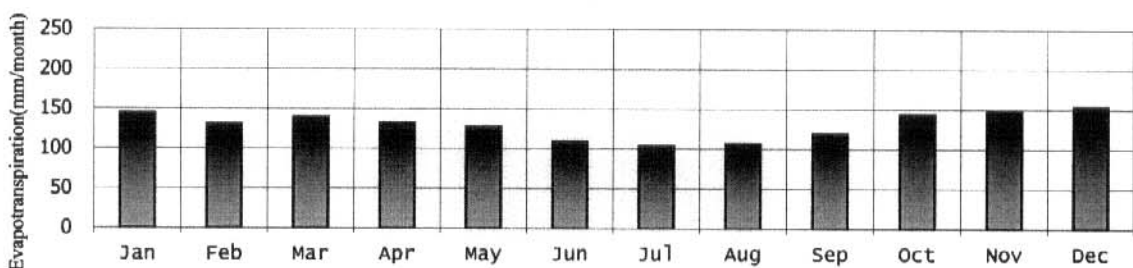


Figure. Change of Monthly Average Potential Evapotranspiration - (Ampenan)

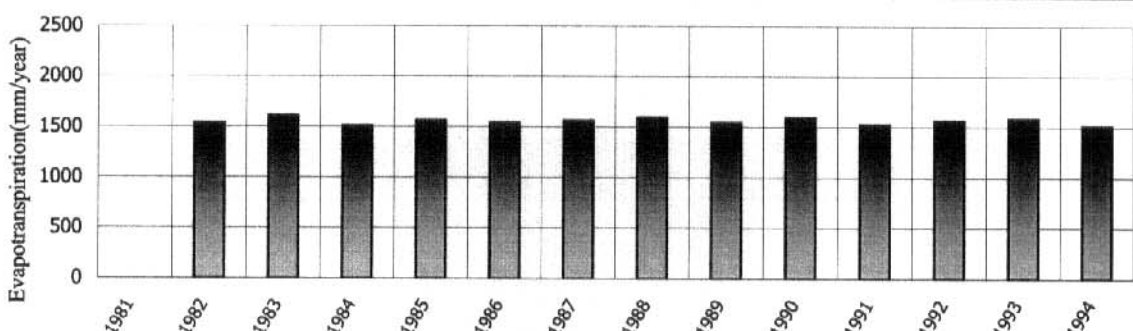


Figure. Variation of Annual Potential Evapotranspiration - (Ampenan)

Potential Evapotranspiration - (Sumbawa Besar)

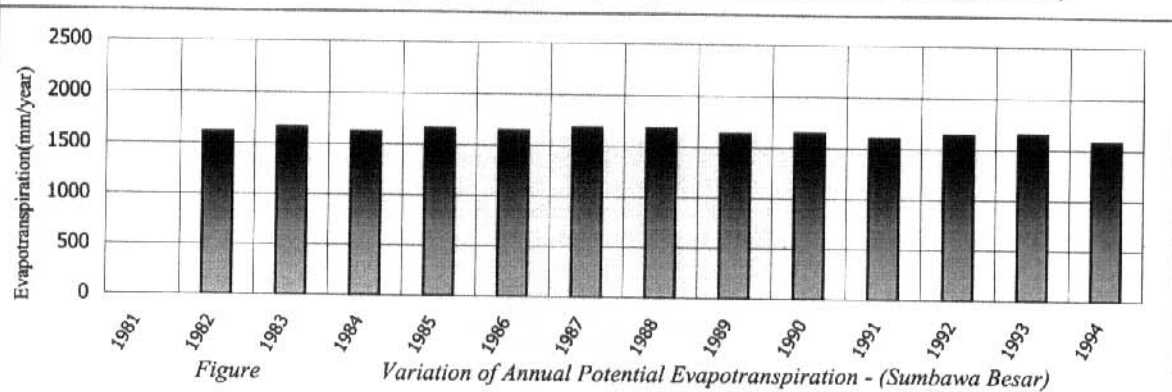
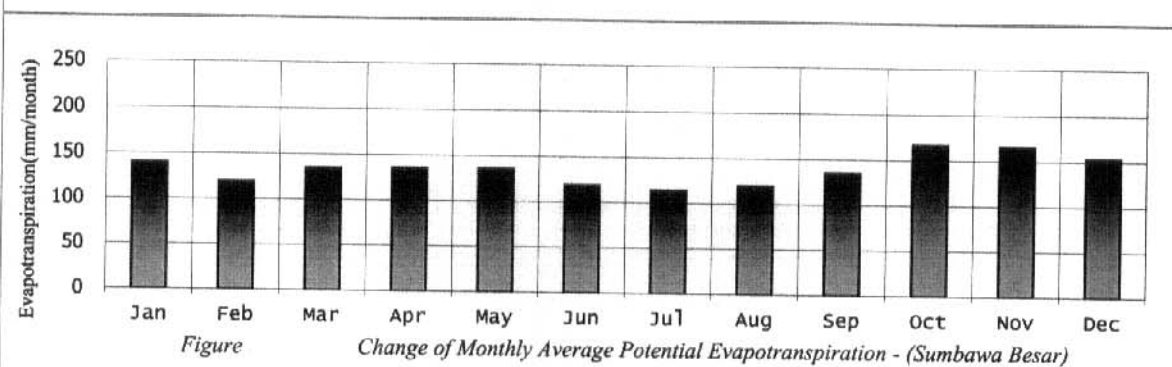
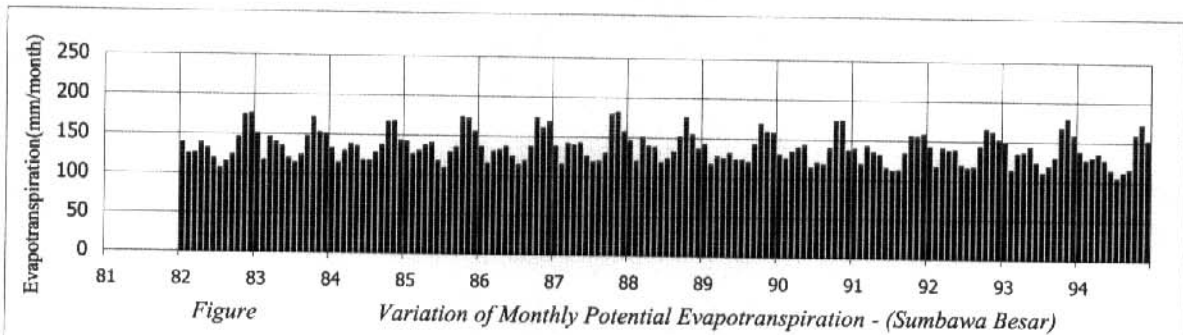
Station: Sumbawa Besar

Latitude: 08° 25' S

Longitude: 117° 30' E

Altitude: 3 m

	Jan	Feb	Mar	Apr	May	Jun	Jul	Aug	Sep	Oct	Nov	Dec	Total
1981													
1982	138.4	124.3	125.4	137.8	131.2	117.9	106.4	113.9	122.8	145.5	173.8	175.1	1612.4
1983	149.9	116.7	145.7	139.3	134.4	118.9	113.5	123.3	146.7	171.0	151.9	150.5	1661.8
1984	132.4	113.9	128.7	137.7	134.7	117.7	117.5	127.4	137.2	166.5	167.1	142.7	1623.6
1985	141.6	125.4	130.0	137.4	140.1	117.2	108.5	128.7	134.9	173.3	171.7	154.8	1663.9
1986	136.0	115.3	130.3	131.9	136.5	124.3	113.8	118.3	137.0	173.3	160.5	168.2	1645.4
1987	137.4	114.8	141.5	139.2	142.0	125.7	118.3	119.5	129.1	178.1	181.2	156.8	1683.5
1988	145.5	119.8	149.7	139.1	138.0	118.6	123.5	132.2	150.7	175.7	153.9	135.9	1682.6
1989	142.0	117.1	126.8	124.8	130.9	122.7	122.5	120.2	142.9	168.7	158.4	157.2	1634.1
1990	130.2	125.6	134.0	139.4	142.2	114.1	120.6	118.3	138.9	173.3	174.0	136.5	1647.0
1991	138.4	119.2	142.2	134.1	131.3	114.7	111.2	112.3	133.6	155.8	154.3	157.4	1604.4
1992	141.9	117.0	139.9	137.5	138.4	119.1	115.4	116.6	142.8	164.3	160.5	150.7	1644.0
1993	147.9	113.5	134.0	135.6	142.2	122.5	110.3	118.2	129.4	166.5	178.7	157.0	1655.7
1994	136.9	126.4	129.5	134.4	126.3	113.5	103.9	111.2	114.9	158.0	171.4	151.3	1577.7
Average	139.9	119.2	135.2	136.0	136.0	119.0	114.3	120.0	135.5	166.9	166.0	153.4	1641.2



Potential Evapotranspiration - (Bima)

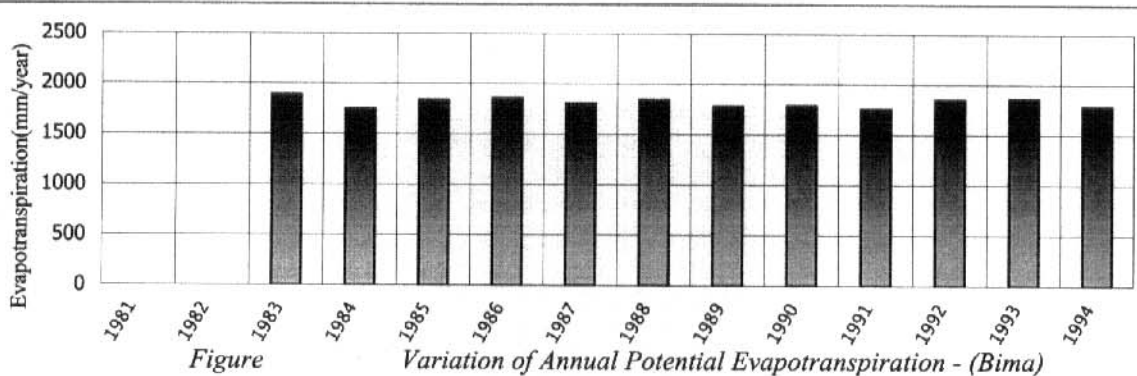
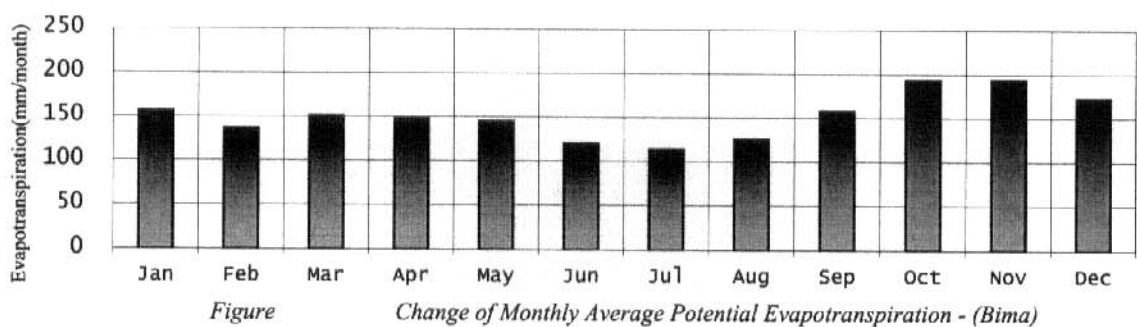
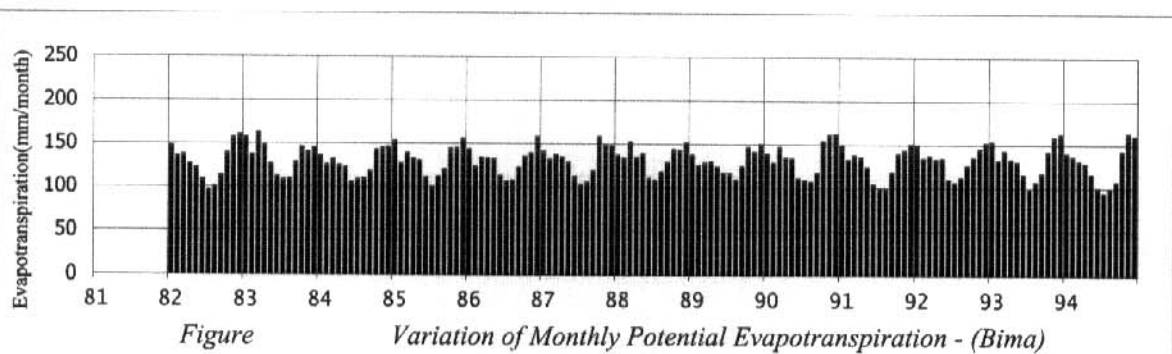
Station: Bima

Latitude: 08° 33' S

Longitude: 118° 42' E

Altitude: 0.8 m

	Jan	Feb	Mar	Apr	May	Jun	Jul	Aug	Sep	Oct	Nov	Dec	Total
1981													
1982													
1983	163.9	151.6	159.3	154.8	153.3	127.1	115.0	131.7	170.7	205.7	174.1	179.7	1886.9
1984	144.8	126.3	149.2	148.9	137.4	123.2	117.3	122.1	144.1	185.8	191.6	156.3	1747.0
1985	166.7	141.2	141.9	144.1	153.7	114.8	105.5	132.4	161.2	202.3	194.9	177.3	1836.2
1986	154.8	125.1	143.8	144.0	144.7	123.8	121.2	132.2	156.5	211.0	200.6	198.7	1856.4
1987	155.2	129.4	155.3	152.9	145.1	126.2	116.4	125.0	150.1	163.8	208.5	177.4	1805.2
1988	161.8	147.5	162.0	152.7	134.3	121.9	101.9	146.9	207.4	178.4	174.2	157.7	1846.6
1989	155.4	129.7	140.4	142.4	143.2	124.6	127.9	121.6	143.9	196.4	179.1	177.4	1781.9
1990	136.0	135.5	157.7	153.0	153.9	115.6	109.8	112.6	156.8	173.4	222.4	162.9	1789.7
1991	149.1	133.9	157.9	140.6	137.4	101.2	107.0	120.3	159.1	196.1	171.8	182.5	1756.8
1992	161.8	134.9	152.7	146.1	149.1	123.8	125.1	124.4	158.8	222.8	181.8	167.2	1848.6
1993	166.6	136.9	152.6	150.5	151.3	129.5	110.2	130.1	152.0	197.0	220.9	162.3	1859.7
1994	157.7	147.9	138.5	146.7	139.2	114.0	106.6	109.4	137.8	193.6	210.7	177.5	1779.7
Average	156.1	136.7	151.0	148.1	145.2	120.5	113.7	125.7	158.2	193.9	194.2	173.1	1816.2



Potential Evapotranspiration - (Maumere)

Station: Maumere

Latitude: 08° 38' S

Longitude: 122° 21' E

Altitude: 25 m

	Jan	Feb	Mar	Apr	May	Jun	Jul	Aug	Sep	Oct	Nov	Dec	Total
1981													
1982													
1983	184.3	151.6	164.1	143.5	144.2	126.9	124.2	131.5	160.9	191.7	195.4	185.0	1903.3
1984	145.7	126.9	148.2	152.7	153.5	133.4	124.9	138.3	158.8	205.4	206.2	159.9	1853.9
1985	159.3	119.2	152.6	152.6	160.4	116.2	117.3	134.1	156.5	199.8	209.2	193.2	1870.3
1986	149.2	124.0	156.6	159.2	157.6	130.6	144.7	131.1	163.2	189.0	204.1	226.3	1935.7
1987	150.5	116.9	171.0	171.3	174.8	149.3	135.0	143.0	162.8	219.0	233.0	196.2	2022.8
1988	180.9	178.2	195.9	190.4	166.5	132.7	149.9	161.4	178.2	233.2	170.4	162.3	2099.9
1989	168.5	131.9	140.6	147.6	146.1	130.5	138.1	127.0	160.8	212.0	228.5	216.9	1948.6
1990	144.6	144.7	176.5	149.9	164.9	130.6	133.9	127.0	146.9	206.1	231.6	182.2	1938.9
1991	161.5	126.5	166.6	150.3	153.3	133.1	126.4	131.7	154.0	194.4	189.8	198.8	1886.5
1992	170.2	139.0	168.0	171.2	177.3	153.6	147.9	147.1	170.3	216.2	211.1	187.3	2059.2
1993	176.0	131.3	166.0	149.5	164.6	147.2	133.3	138.9	158.1	197.6	229.3	193.3	1985.2
1994	166.4	147.2	150.1	157.1	148.8	133.2	124.5	131.8	145.1	178.3	212.4	185.1	1880.1
Average	163.1	136.5	163.0	157.9	159.3	134.8	133.4	136.9	159.6	203.5	210.1	190.5	1948.7

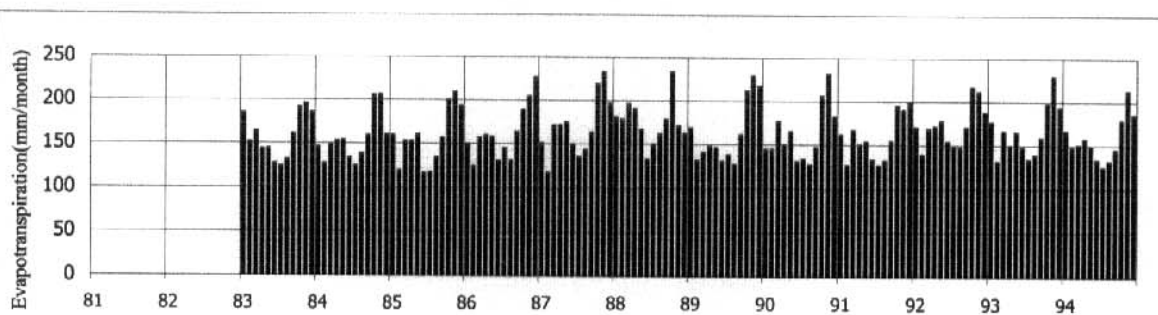


Figure. Variation of Monthly Potential Evapotranspiration - (Maumere)

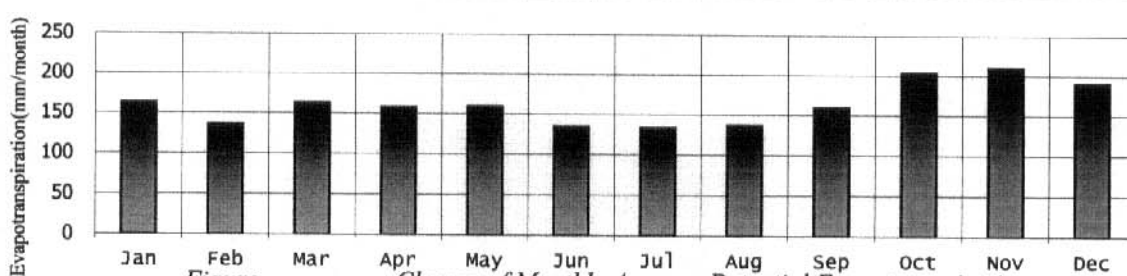


Figure. Change of Monthly Average Potential Evapotranspiration - (Maumere)

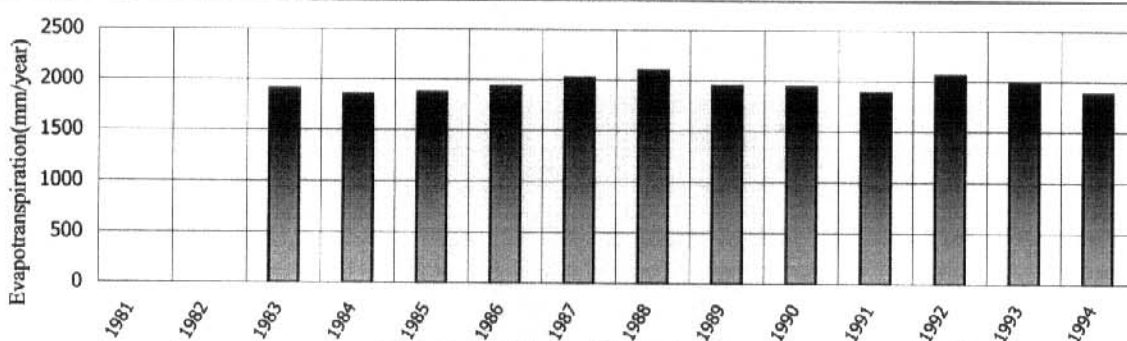


Figure. Variation of Annual Potential Evapotranspiration - (Maumere)

Potential Evapotranspiration - (Larantuka)

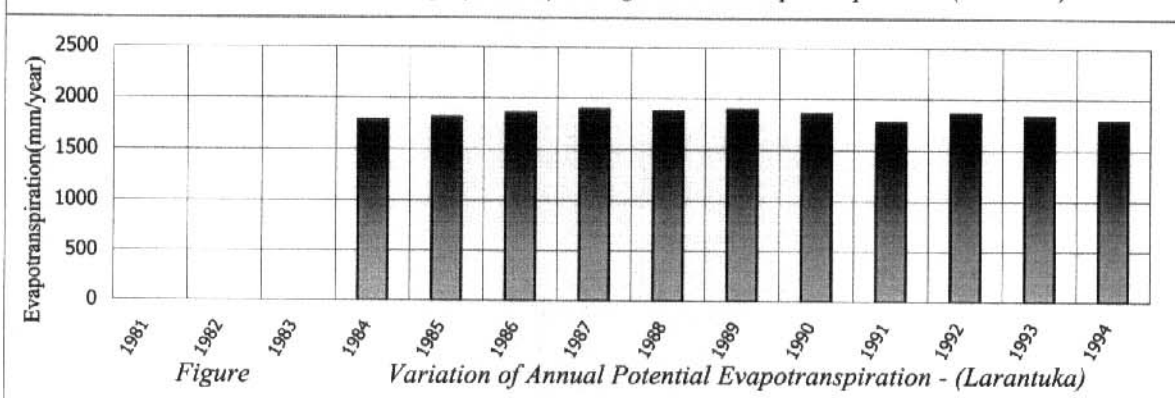
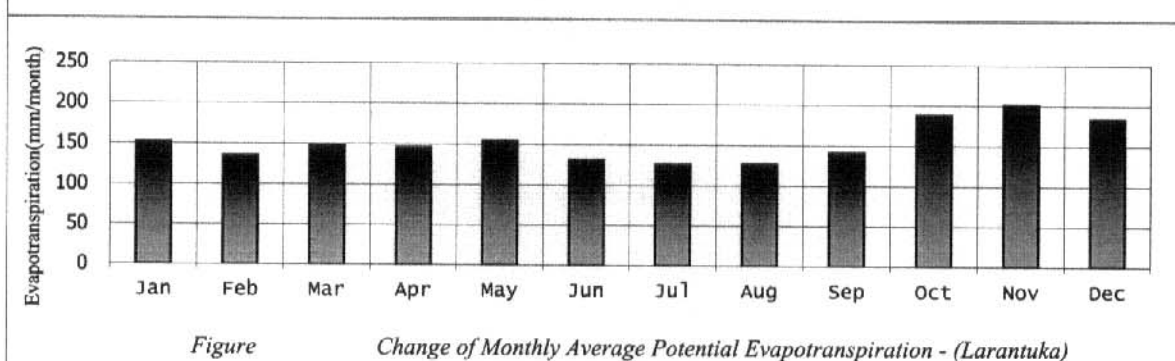
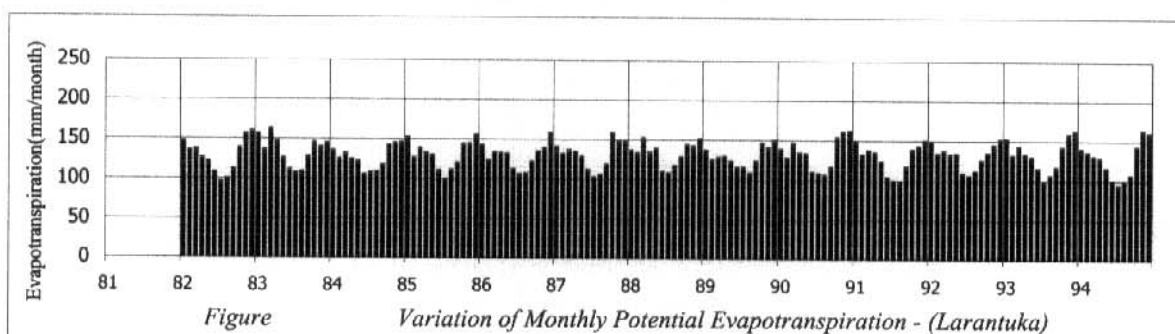
Station: Larantuka

Latitude: 08° 17' S

Longitude: 123° 00' E

Altitude: 9 m

	Jan	Feb	Mar	Apr	May	Jun	Jul	Aug	Sep	Oct	Nov	Dec	Total
1981													
1982													
1983													
1984	144.3	129.6	142.4	142.4	149.5	138.1	125.9	127.1	141.7	188.5	194.6	160.5	1784.6
1985	157.4	129.4	144.3	152.9	162.9	118.8	118.2	126.9	135.4	186.0	192.1	185.1	1809.4
1986	150.2	123.2	150.5	150.5	151.3	137.6	125.1	118.7	143.3	205.3	189.7	207.2	1852.5
1987	128.2	163.2	141.2	154.8	169.9	135.1	120.6	133.8	134.5	197.2	212.4	201.7	1892.6
1988	168.9	138.7	161.8	139.4	151.0	139.3	142.9	153.3	163.4	186.2	176.6	152.5	1874.1
1989	161.5	132.5	137.0	145.9	140.1	131.1	132.5	127.7	151.8	197.1	224.4	210.4	1892.1
1990	147.9	138.9	159.6	135.6	158.1	127.5	134.9	124.3	145.4	188.8	217.9	177.2	1856.0
1991	160.0	126.0	155.6	144.6	158.4	122.9	115.1	121.7	133.8	166.2	181.6	187.6	1773.5
1992	152.3	136.8	150.3	150.4	151.2	133.4	138.9	124.1	143.2	197.0	200.7	182.4	1860.7
1993	166.7	135.1	150.6	137.9	153.7	131.7	125.3	119.0	137.2	183.5	214.5	177.3	1832.5
1994	138.1	137.5	142.5	153.0	153.9	132.2	108.1	121.6	127.9	178.3	210.9	182.5	1786.5
Average	152.3	135.5	148.7	146.1	154.5	131.6	126.1	127.1	141.6	188.6	201.4	184.1	1837.7



Potential Evapotranspiration - (Waingapu)

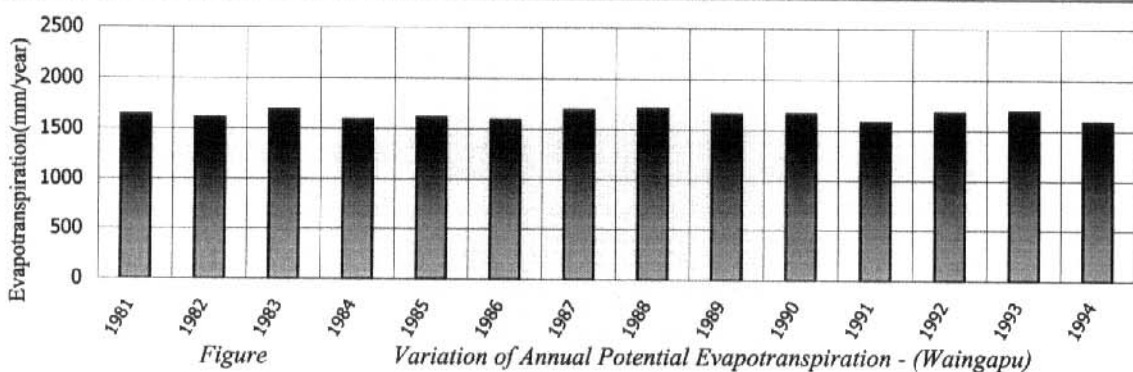
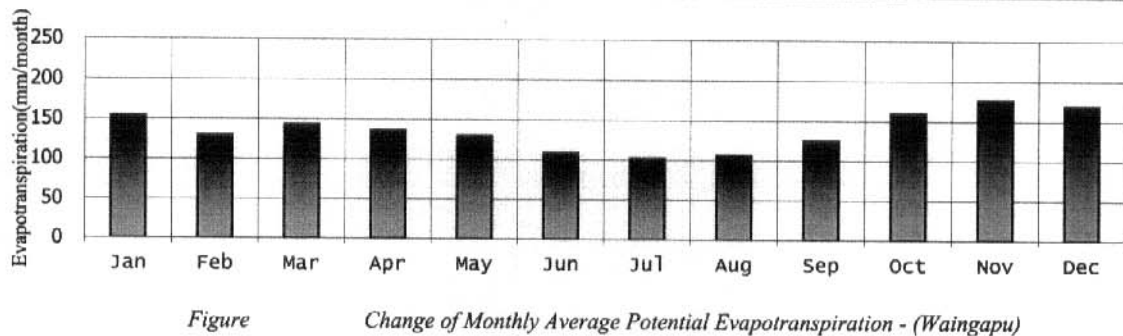
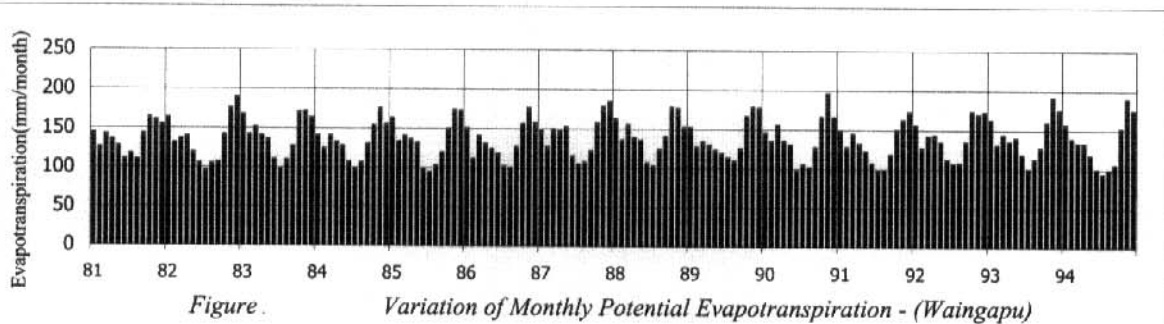
Station: Waingapu

Latitude: 09° 40' S

Longitude: 120° 20' E

Altitude: 10 m

	Jan	Feb	Mar	Apr	May	Jun	Jul	Aug	Sep	Oct	Nov	Dec	Total
1981	144.0	125.7	141.9	135.7	127.3	111.0	117.3	110.1	142.9	164.3	160.6	155.0	1635.8
1982	163.0	131.5	136.6	139.8	119.1	105.4	96.1	104.6	106.6	141.7	176.0	189.2	1609.6
1983	167.3	142.2	151.8	141.1	136.1	110.3	98.7	109.3	127.2	171.0	171.7	163.5	1690.2
1984	140.6	124.5	140.5	132.4	127.9	107.0	99.2	106.3	130.1	153.8	175.9	155.4	1593.5
1985	163.0	133.2	140.3	136.0	131.3	97.8	94.5	102.9	119.5	149.6	173.8	172.8	1614.7
1986	150.5	111.3	140.5	130.6	124.4	118.2	102.2	100.2	126.6	155.8	175.9	157.5	1593.8
1987	147.6	127.0	149.7	147.1	152.2	115.2	104.9	107.6	121.8	157.5	178.8	184.8	1694.1
1988	162.7	136.2	155.9	139.0	135.8	106.6	102.9	124.5	140.4	178.2	176.5	152.2	1710.9
1989	152.1	127.3	134.0	130.0	123.5	119.1	113.7	109.8	125.8	166.5	178.6	177.5	1657.8
1990	145.8	134.7	156.2	135.6	130.7	98.3	105.6	101.9	127.6	166.5	195.7	165.9	1664.5
1991	148.6	128.1	144.4	132.5	122.8	107.2	98.0	99.0	118.2	149.8	162.8	172.7	1584.1
1992	156.2	127.1	141.6	143.2	134.3	112.0	106.7	107.8	134.8	173.4	169.4	172.8	1679.2
1993	162.7	130.6	143.4	135.2	139.9	118.6	100.1	112.5	127.2	159.7	191.1	175.1	1696.3
1994	156.7	138.9	133.1	132.5	117.7	99.8	93.7	99.0	105.4	151.8	189.7	175.0	1593.4
Average	154.3	129.9	143.6	136.5	130.2	109.0	102.4	106.8	125.3	160.0	176.9	169.2	1644.1



Potential Evapotranspiration - (Baa)

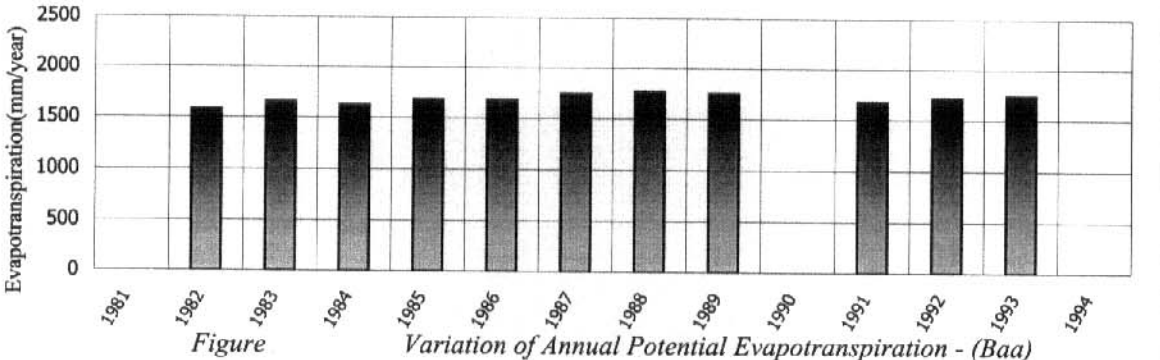
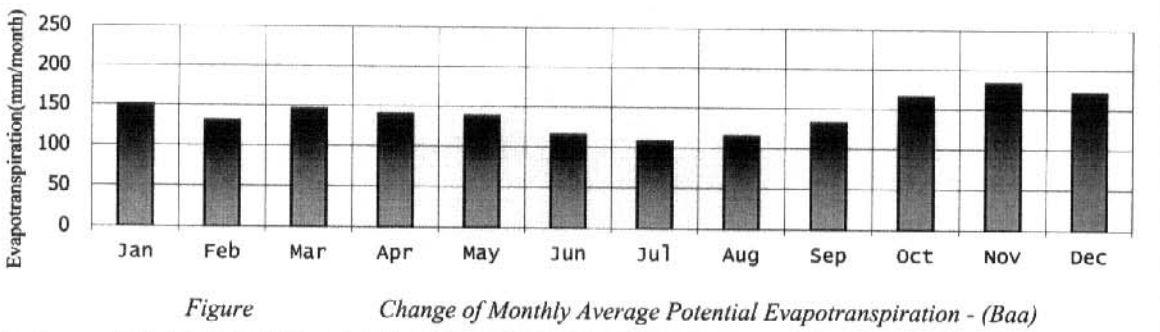
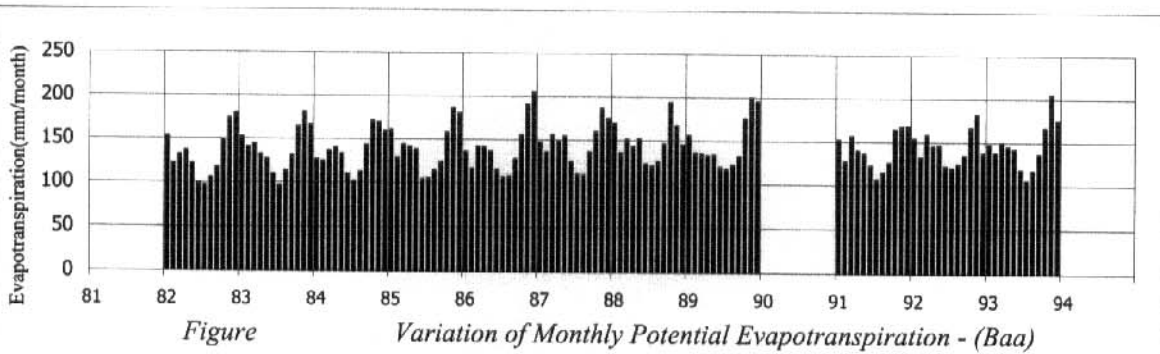
Station: Baa

Latitude: 10° 32' S

Longitude: 122° 50' E

Altitude: 139 m

	Jan	Feb	Mar	Apr	May	Jun	Jul	Aug	Sep	Oct	Nov	Dec	Total
1981													
1982	152.7	121.3	131.4	136.2	121.2	98.5	96.7	105.1	116.7	147.8	173.6	179.5	1580.7
1983	152.1	140.4	143.8	131.8	127.1	109.2	96.4	113.2	131.3	164.3	181.0	165.9	1656.5
1984	126.9	124.1	136.3	139.6	132.9	109.6	101.5	112.0	143.0	171.0	169.3	159.4	1625.7
1985	160.6	128.9	143.6	141.2	138.1	104.0	105.1	114.4	123.7	157.6	186.0	179.9	1683.2
1986	135.7	116.7	141.6	141.2	136.2	115.5	106.9	107.9	127.4	155.5	190.9	205.2	1680.6
1987	147.0	135.9	155.7	148.9	154.1	125.0	110.4	109.9	136.1	159.5	186.5	175.0	1744.0
1988	169.4	135.6	151.1	142.5	151.8	122.8	120.5	125.4	146.0	193.7	167.0	145.0	1770.8
1989	155.7	135.8	134.7	132.7	133.4	119.6	117.3	122.1	132.1	175.8	199.5	195.4	1754.2
1990													
1991	151.9	127.1	156.1	139.2	136.1	122.2	106.7	114.4	125.5	164.2	167.2	168.1	1678.6
1992	153.6	132.2	158.1	144.9	145.7	121.7	119.5	124.3	134.3	166.4	181.4	137.4	1719.4
1993	147.0	137.9	149.3	144.8	141.5	117.9	105.6	116.9	136.1	166.4	204.7	175.1	1743.1
1994													
Average	150.2	130.5	145.6	140.3	138.0	115.1	107.9	115.1	132.0	165.6	182.5	171.4	1694.3



Potential Evapotranspiration - (Kupang)

Station: Kupang

Latitude: 10° 11' S

Longitude: 123° 34' E

Altitude: 102 m

	Jan	Feb	Mar	Apr	May	Jun	Jul	Aug	Sep	Oct	Nov	Dec	Total
1981													
1982	148.2	119.0	150.1	145.4	134.8	112.9	100.1	112.1	114.2	145.5	164.9	177.4	1624.6
1983	151.6	132.3	147.3	157.6	131.9	116.5	101.2	119.0	140.3	178.2	171.8	168.0	1715.8
1984	137.7	118.4	135.8	147.2	146.1	117.2	106.9	119.8	144.7	166.5	176.4	148.4	1665.0
1985	151.8	127.0	143.5	141.1	148.0	110.2	108.1	123.0	132.8	159.7	174.1	168.1	1687.4
1986	135.5	116.5	133.7	137.3	144.0	125.8	113.3	112.7	132.9	166.5	188.5	175.1	1681.7
1987	144.6	126.1	146.9	153.1	156.2	130.5	122.5	116.5	135.9	168.6	191.7	165.4	1758.2
1988	148.8	124.1	148.9	150.9	156.2	121.0	124.2	141.2	159.1	193.7	160.1	140.8	1768.9
1989	159.4	139.0	141.7	148.3	167.5	146.0	117.5	122.5	137.0	183.5	192.3	190.4	1845.3
1990	141.2	130.5	139.2	145.0	137.8	113.2	119.7	115.6	140.4	171.1	199.0	154.4	1707.1
1991	143.3	130.5	151.7	137.1	141.8	120.2	111.2	122.8	128.9	161.9	174.1	175.1	1698.7
1992	147.0	126.4	149.2	138.7	143.5	121.4	124.6	118.6	142.1	188.3	176.6	163.2	1739.6
1993	153.5	122.7	134.8	138.7	145.6	121.5	112.2	120.4	136.1	166.4	202.1	190.1	1744.3
1994	148.1	131.2	140.1	135.8	131.0	117.7	95.4	111.9	112.4	157.8	190.4	166.0	1637.7
Average	147.0	126.4	143.3	144.3	145.0	121.1	112.1	119.7	135.1	169.8	181.7	167.9	1713.4

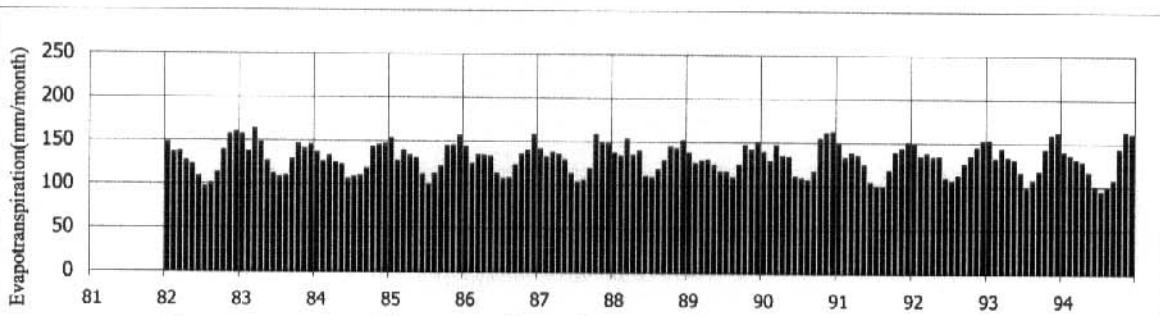


Figure Variation of Monthly Potential Evapotranspiration - (Kupang)

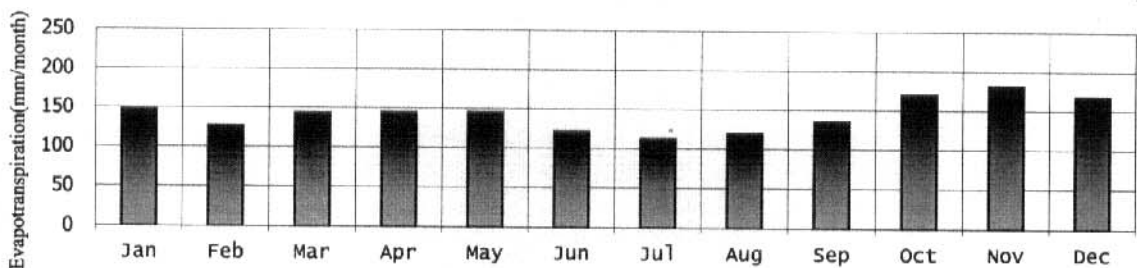


Figure Change of Monthly Average Potential Evapotranspiration - (Kupang)

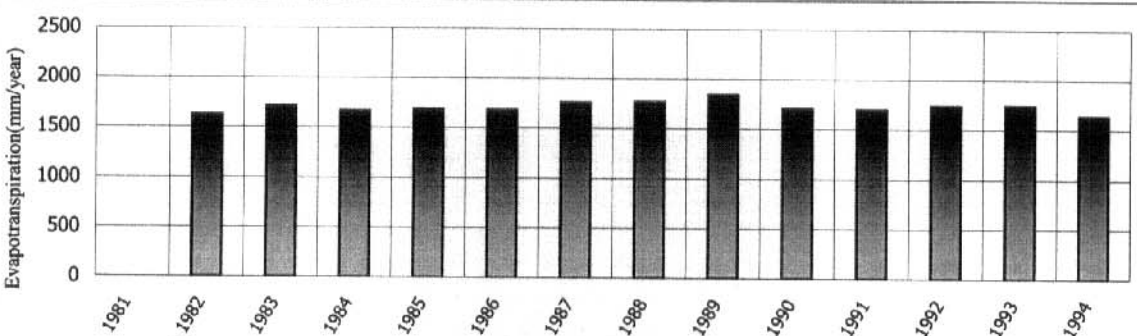


Figure Variation of Annual Potential Evapotranspiration - (Kupang)

Monthly Water Resources Amount (P-PE) - (Ampenan)

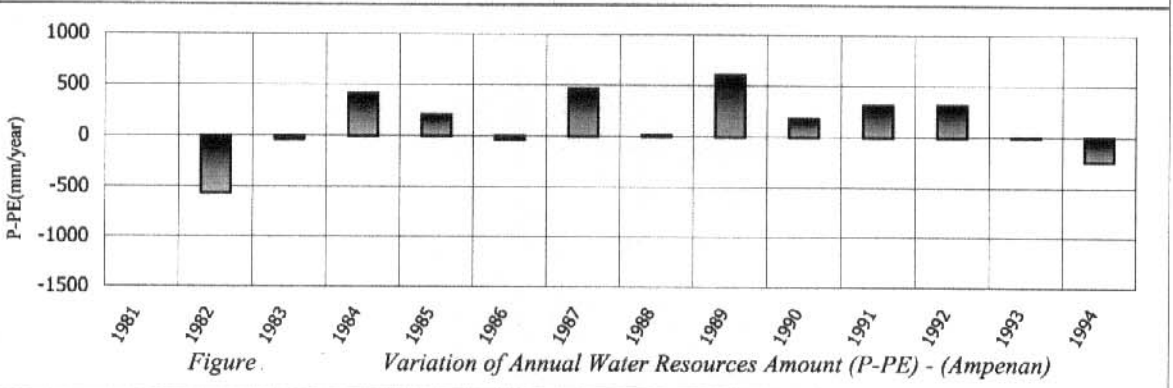
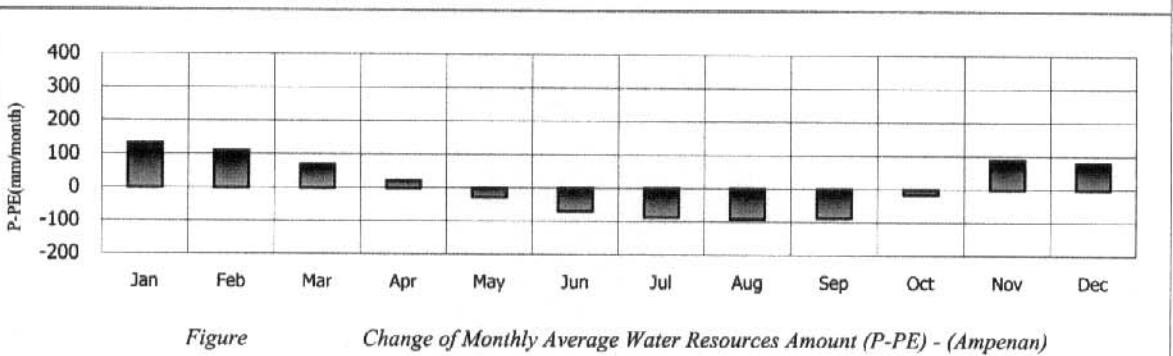
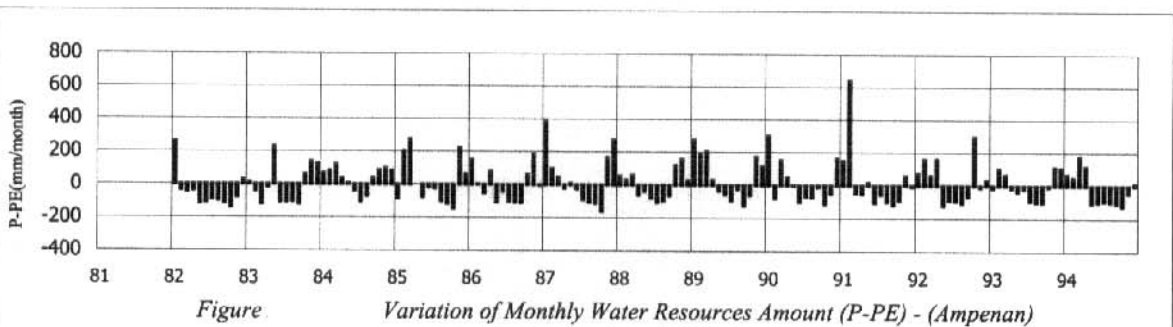
Station: Ampenan

Latitude: 08° 32' S

Longitude: 116° 04' E

Altitude: 16 m

	Jan	Feb	Mar	Apr	May	Jun	Jul	Aug	Sep	Oct	Nov	Dec	Total
1981													
1982	264	-35	-47	-38	-114	-108	-89	-98	-111	-138	-78	30	-562
1983	13	-41	-120	-16	232	-107	-106	-103	-119	63	141	129	-34
1984	69	84	123	39	8	-40	-103	-72	40	87	99	83	416
1985	-85	204	278	0	-76	-17	-23	-101	-117	-144	224	64	208
1986	154	4	-50	79	-105	-40	-100	-106	-109	61	186	-4	-30
1987	385	98	46	-21	9	-25	-90	-105	-112	-158	168	274	468
1988	54	33	60	-61	-38	-78	-105	-93	-64	121	158	30	16
1989	277	191	205	32	-34	-57	-91	-24	-124	-60	174	116	606
1990	303	-79	154	51	-2	-100	-66	-72	-10	-112	-50	165	182
1991	152	646	-46	-51	17	-104	-54	-99	-115	-88	60	-7	312
1992	73	162	63	162	-120	-86	-93	-105	-65	300	-10	35	315
1993	-15	101	67	-17	-35	-20	-92	-100	-101	-8	114	108	2
1994	68	49	179	118	-104	-99	-93	-98	-105	-123	-45	12	-239
Average	132	109	70	21	-28	-68	-85	-91	-86	-15	88	80	128



Monthly Water Resources Amount (P-PE) - (Sumbawa Besar)

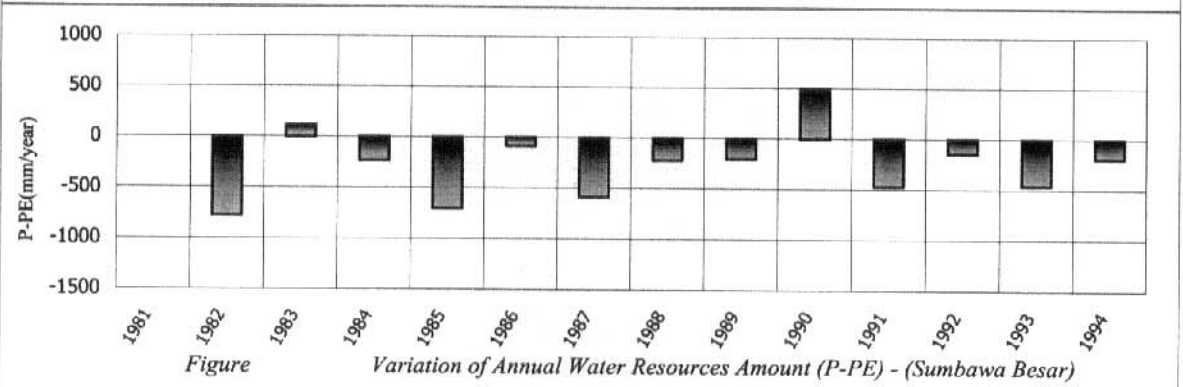
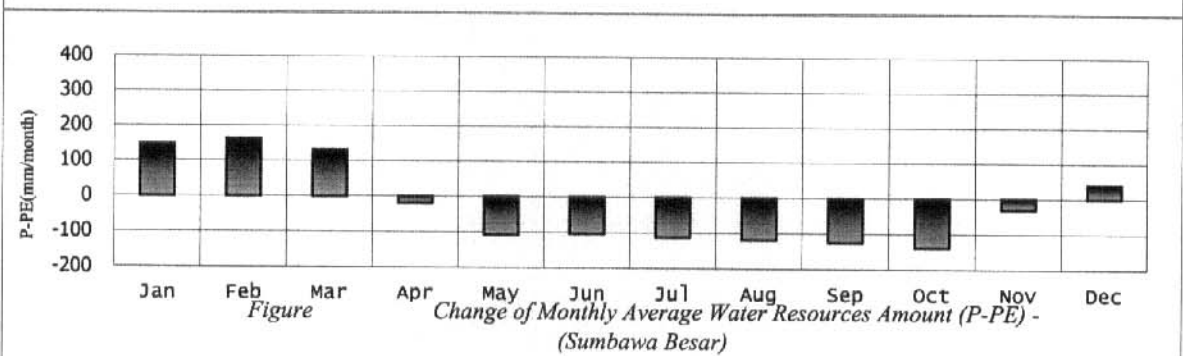
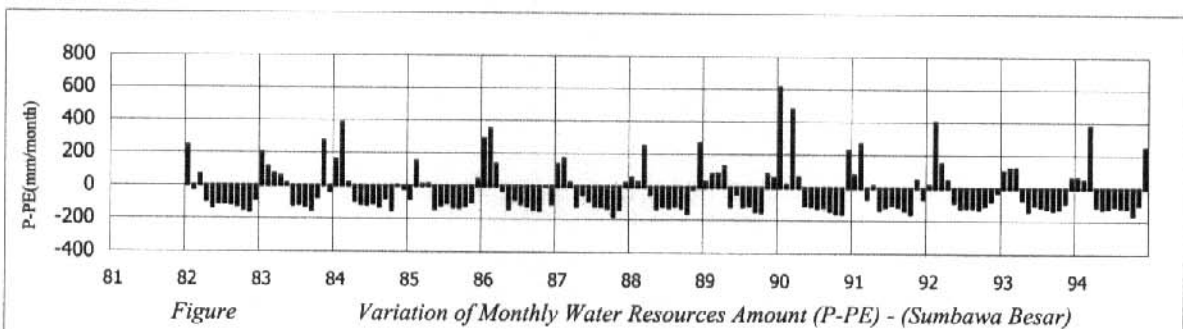
Station: Sumbawa Besar

Latitude: 08° 25' S

Longitude: 117° 30' E

Altitude: 3 m

	Jan	Feb	Mar	Apr	May	Jun	Jul	Aug	Sep	Oct	Nov	Dec	Total
1981													
1982	241	-22	67	-94	-131	-105	-106	-114	-123	-146	-157	-86	-776
1983	198	114	72	56	12	-119	-113	-123	-147	-70	271	-35	116
1984	158	383	18	-92	-111	-115	-108	-127	-75	-146	3	-19	-232
1985	-79	152	9	11	-138	-116	-103	-129	-132	-117	-96	40	-698
1986	290	350	134	-27	-136	-79	-106	-118	-137	-146	-1	-105	-82
1987	135	170	22	-120	-49	-84	-118	-119	-129	-178	-134	23	-583
1988	58	28	249	-44	-129	-117	-124	-114	-125	-158	-11	267	-219
1989	33	80	84	128	-116	-38	-115	-109	-143	-148	82	58	-204
1990	614	18	477	65	-107	-111	-121	-116	-138	-154	-157	228	497
1991	79	267	-65	12	-131	-115	-98	-112	-134	-156	50	-64	-468
1992	16	403	151	47	-85	-118	-114	-116	-126	-104	-77	-22	-144
1993	103	120	122	-66	-135	-99	-110	-118	-129	-121	-86	62	-458
1994	64	49	378	-108	-121	-113	-104	-111	-115	-158	-97	248	-191
Average	147	162	132	-18	-106	-102	-111	-118	-125	-138	-30	41	-264



Monthly Water Resources Amount (P-PE) - (Bima)

Station: Bima

Latitude: 08° 33' S

Longitude: 118° 42' E

Altitude: 0.8 m

	Jan	Feb	Mar	Apr	May	Jun	Jul	Aug	Sep	Oct	Nov	Dec	Total
1981													
1982													
1983	46	90	-104	-87	-34	-127	-115	-132	-171	-127	7	-67	-820
1984	85	45	12	-72	-49	-104	-116	-122	-75	-124	-76	263	-334
1985	17	28	14	-99	-147	-103	-68	-132	-161	-199	14	-83	-920
1986	112	24	-24	-92	-143	-83	-101	-132	-155	-195	-121	-47	-955
1987	112	85	-118	-137	-99	-126	-116	-125	-146	-164	-131	2	-965
1988	21	10	13	-84	-88	-114	-102	-140	-191	-107	-20	47	-756
1989	100	25	29	-66	-137	-84	-31	-109	-143	-157	-68	-36	-678
1990	249	4	-31	-100	-87	-116	-110	-113	-156	-168	-189	116	-700
1991	173	41	-87	56	-134	-101	-104	-117	-159	-196	-43	-81	-753
1992	73	103	-67	-100	-138	-123	-119	-123	-149	-168	-3	12	-802
1993	-49	-15	-19	-87	-141	-97	-110	-130	-151	-191	-146	32	-1105
1994	197	-53	118	-111	-139	-113	-107	-109	-138	-190	-152	-40	-837
Average	85	33	-21	-83	-114	-109	-101	-124	-150	-168	-86	5	-832

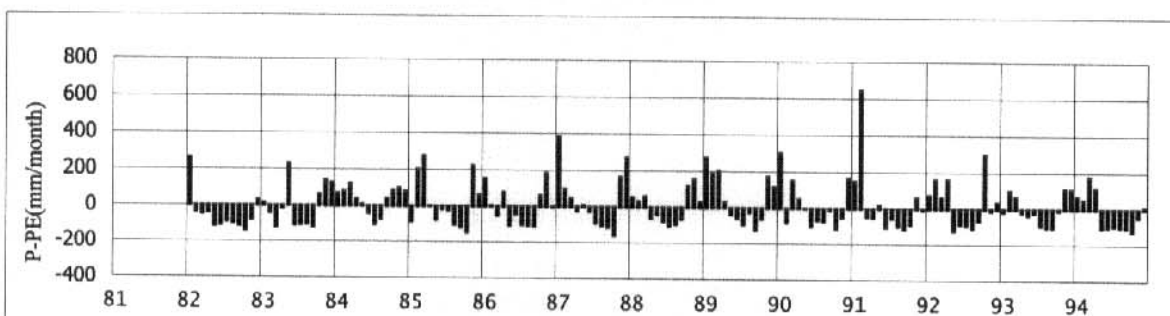


Figure Variation of Monthly Water Resources Amount (P-PE) - (Bima)

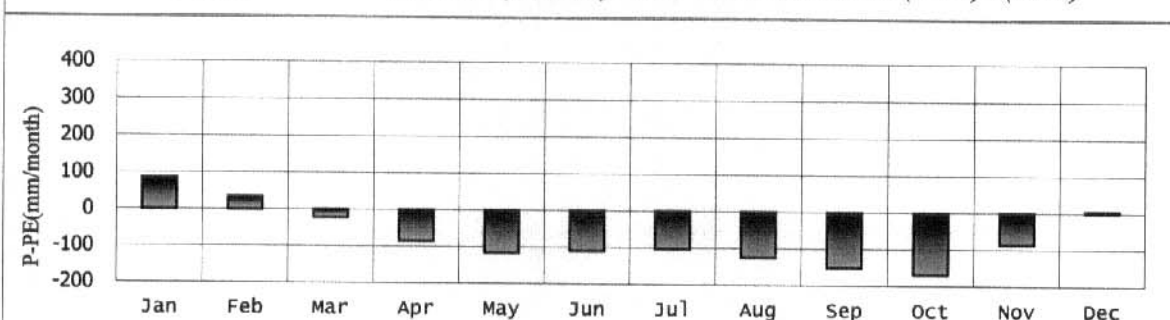


Figure Change of Monthly Average Water Resources Amount (P-PE) - (Bima)

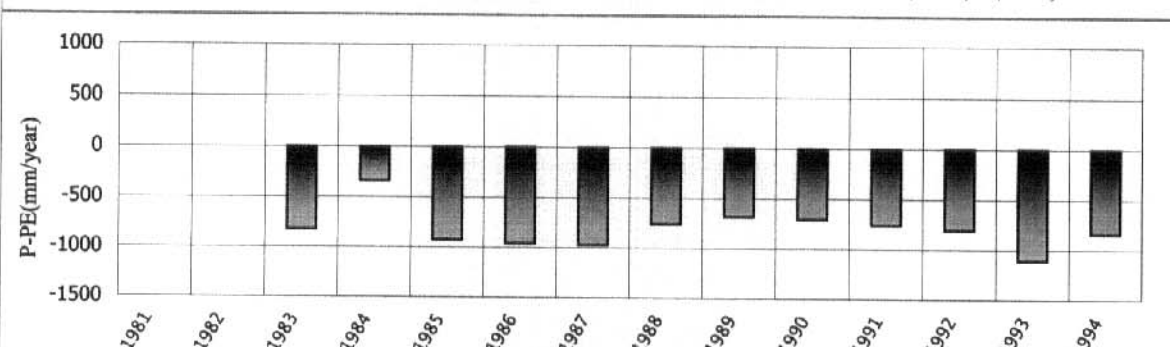


Figure Variation of Annual Water Resources Amount (P-PE) - (Bima)

Monthly Water Resources Amount (P-PE) - (Maumere)

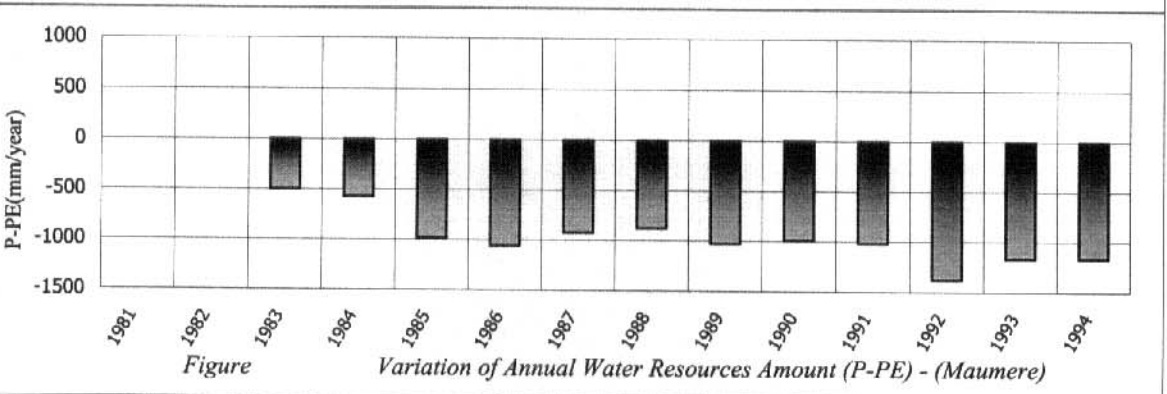
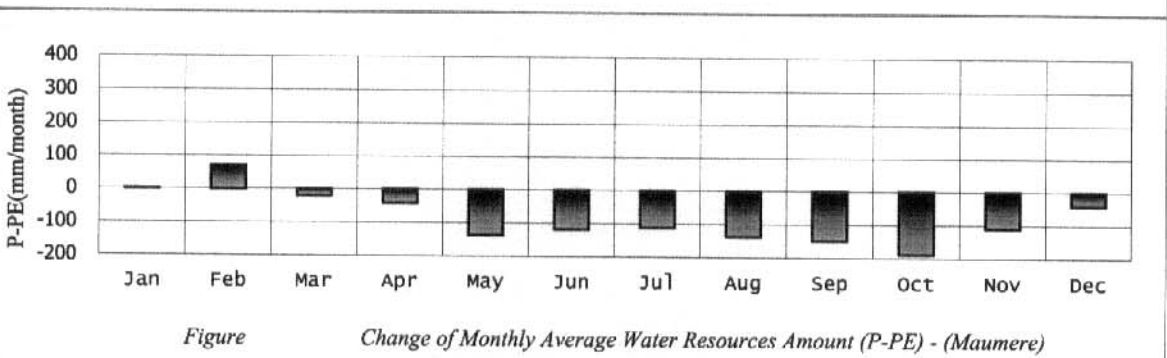
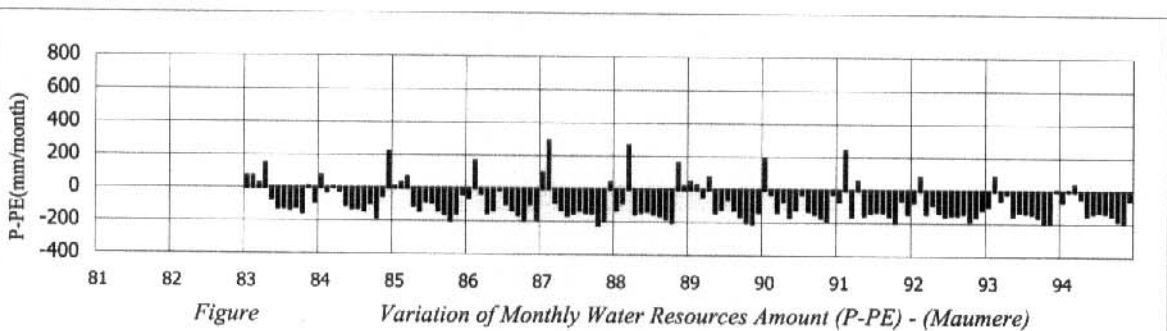
Station: Maumere

Latitude: 08° 38' S

Longitude: 122° 21' E

Altitude: 25 m

	Jan	Feb	Mar	Apr	May	Jun	Jul	Aug	Sep	Oct	Nov	Dec	Total
1981													
1982													
1983	68	67	24	148	-68	-127	-124	-131	-122	-154	9	-85	-495
1984	72	-25	5	-20	-106	-126	-125	-138	-95	-180	-50	222	-566
1985	10	32	68	-107	-138	-79	-88	-134	-156	-197	-153	-35	-978
1986	-56	167	-29	-149	-132	-9	-93	-129	-161	-187	-93	-185	-1056
1987	97	291	-83	-126	-163	-147	-129	-143	-146	-219	-193	39	-922
1988	-126	-83	267	-150	-140	-133	-150	-159	-178	-200	160	18	-875
1989	44	26	-43	75	-138	-116	-58	-121	-161	-197	-203	-133	-1024
1990	194	-27	-134	-67	-165	-117	-26	-127	-146	-167	-184	-23	-987
1991	-65	241	-159	54	-150	-133	-126	-132	-154	-193	-56	-140	-1013
1992	-69	80	-140	-82	-131	-154	-146	-146	-138	-183	-156	-113	-1379
1993	-93	85	-53	-18	-149	-125	-133	-139	-158	-194	-191	4	-1164
1994	-63	5	37	-42	-145	-133	-125	-132	-145	-178	-190	-53	-1165
Average	1	72	-20	-40	-135	-117	-110	-136	-147	-187	-108	-40	-969



Monthly Water Resources Amount (P-PE) - (Larantuka)

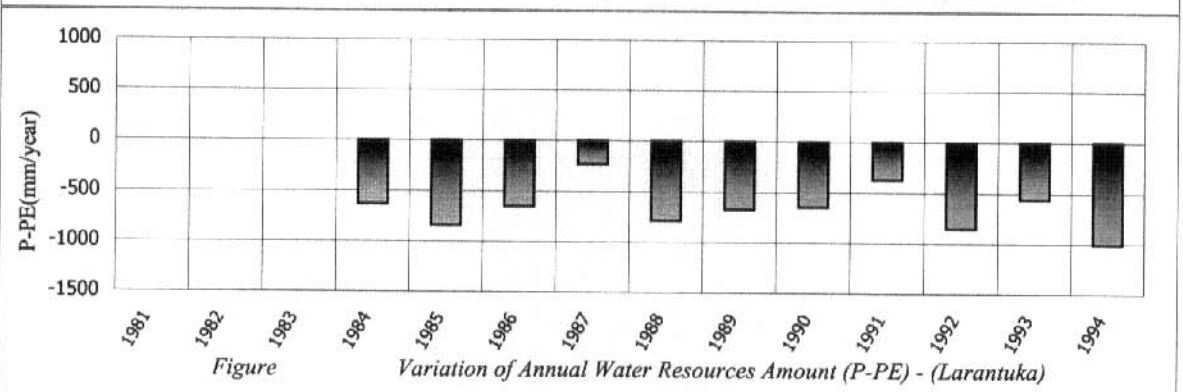
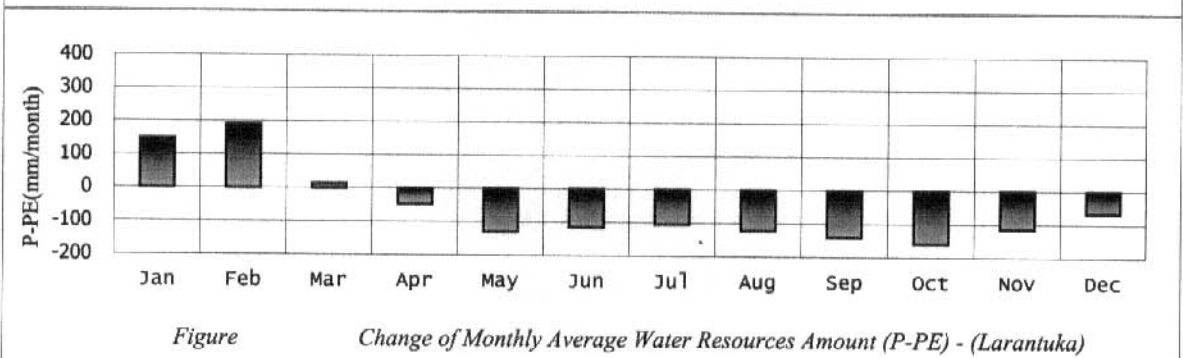
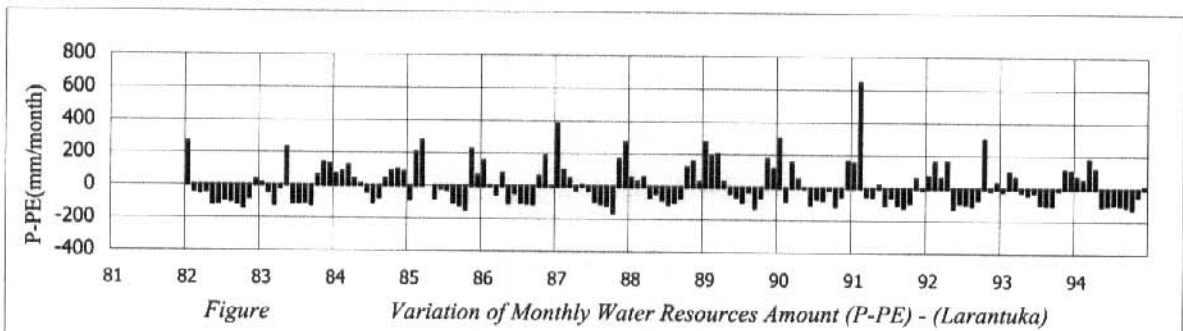
Station: Larantuka

Latitude: 08° 17' S

Longitude: 123° 00' E

Altitude: 9 m

	Jan	Feb	Mar	Apr	May	Jun	Jul	Aug	Sep	Oct	Nov	Dec	Total
1981													
1982													
1983													
1984	97	97	12	-106	-101	-113	-126	-100	-136	-179	-71	99	-626
1985	-25	240	-7	-99	-153	-91	-97	-127	-135	-181	-42	-116	-834
1986	205	243	-59	-115	-137	-79	15	-101	-143	-202	-96	-175	-644
1987	501	540	-61	-155	-124	-129	-100	-134	-134	-196	-168	-68	-229
1988	-49	3	175	-88	-136	-139	-143	-149	-142	-98	-39	28	-777
1989	38	34	354	-42	-119	-105	-77	-120	-150	-137	-207	-135	-666
1990	261	6	35	-48	-92	-128	-118	-124	-142	-67	-193	-30	-639
1991	275	367	-145	201	-158	-112	-107	-122	-133	-165	-119	-149	-366
1992	198	181	-110	-97	-123	-108	-136	-114	-141	-161	-124	-113	-850
1993	156	200	-85	76	-141	-103	-125	-115	-137	-183	-144	47	-554
1994	-17	191	-16	-108	-154	-132	-101	-122	-128	-176	-186	-54	-1004
Average	149	191	14	-47	-129	-114	-103	-121	-139	-158	-113	-65	-636



Monthly Water Resources Amount (P-PE) - (Waingapu)

Station: Waingapu

Latitude: 09° 40' S

Longitude: 120° 20' E

Altitude: 10 m

	Jan	Feb	Mar	Apr	May	Jun	Jul	Aug	Sep	Oct	Nov	Dec	Total
1981	164	88	-42	-111	6	-99	-83	-110	-135	-164	-24	75	-435
1982	-106	54	-9	-108	-116	-103	-96	-105	-107	-142	-159	-118	-1115
1983	-71	-2	183	0	-93	-110	-99	-109	-127	-164	-120	-128	-841
1984	66	38	-33	26	-75	-100	-99	-106	-128	-108	-168	109	-579
1985	28	-57	-26	-30	-115	0	-87	-103	-120	-150	-72	-45	-776
1986	17	163	54	-55	-108	-71	-58	-100	-122	-130	-174	-60	-646
1987	95	4	-141	-143	-89	-114	-104	-102	-122	-158	-85	-151	-1108
1988	81	-68	66	-88	-124	-107	-102	-122	-140	-178	-95	21	-855
1989	7	-25	54	-39	-94	-96	-96	-107	-126	-165	-153	-76	-917
1990	81	-70	15	-56	-92	-98	-106	-102	-124	-166	-196	12	-901
1991	93	78	-18	4	-120	-107	-87	-99	-118	-150	-63	-91	-677
1992	22	149	-49	-120	-112	-112	-107	-108	-133	-173	-97	-129	-969
1993	-54	36	-38	-91	-140	-71	-100	-112	-127	-159	-190	-3	-1049
1994	-89	-6	185	-94	-118	-100	-94	-99	-105	-152	-190	-75	-935
Average	24	27	14	-65	-99	-92	-94	-106	-124	-154	-127	-47	-843

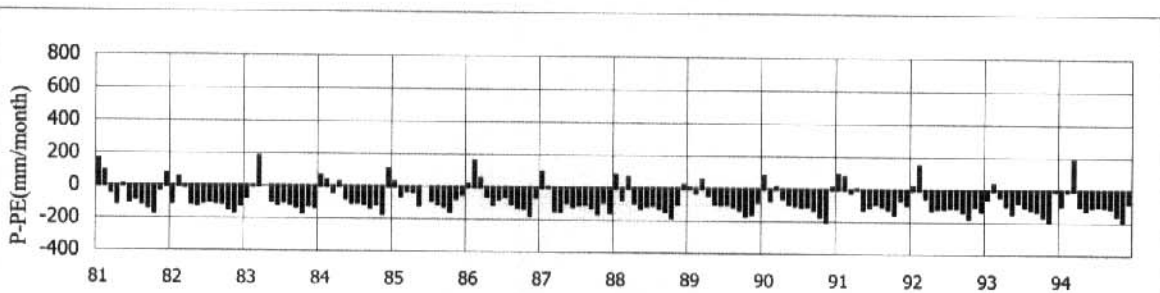


Figure Variation of Monthly Water Resources Amount (P-PE) - (Waingapu)

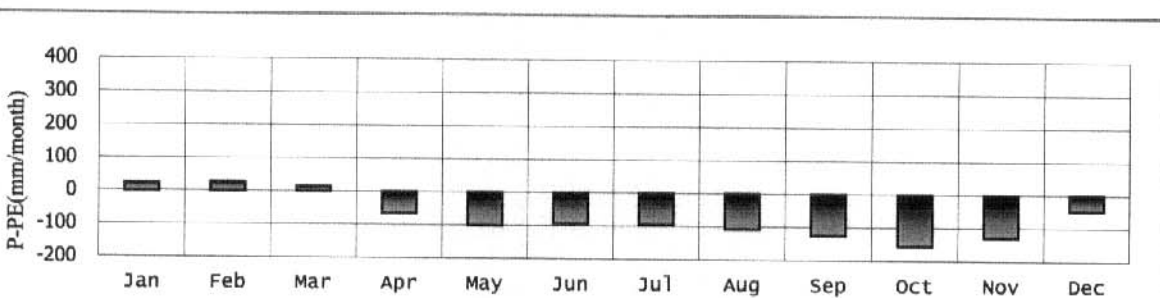


Figure Change of Monthly Average Water Resources Amount (P-PE) - (Waingapu)

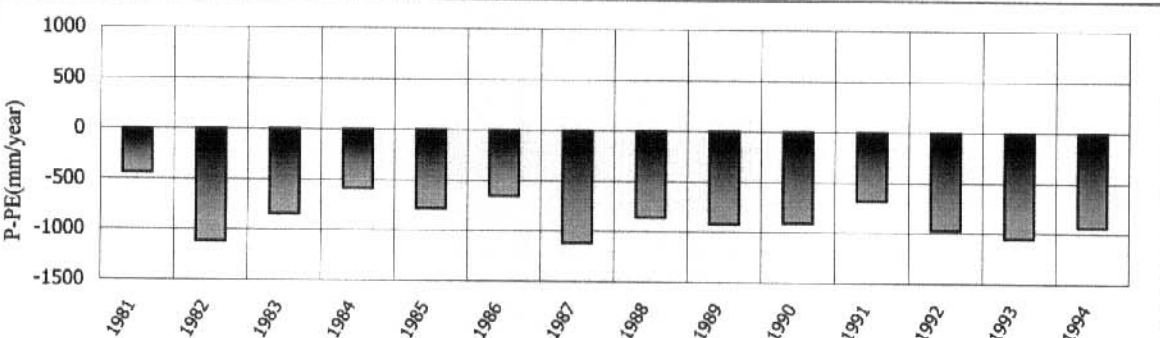


Figure Variation of Annual Water Resources Amount (P-PE) - (Waingapu)