

JAPAN INTERNATIONAL COOPERATION AGENCY
MINISTRY OF SETTLEMENT & REGIONAL INFRASTRUCTURE
REPUBLIC OF INDONESIA

**THE STUDY
ON
RURAL WATER SUPPLY PROJECT
IN
NUSA TENGGARA BARAT AND NUSA TENGGARA TIMUR**

**FINAL REPORT
VOLUME III
SUPPORTING REPORT 1**

WATER SOURCES

- Appendix 1** **VILLAGE MAPS**
- Appendix 2** **HYDROMETEOROLOGICAL DATA**
- Appendix 3** **LIST OF EXISTING WELLS AND SPRINGS**
- Appendix 4** **ELECTRIC SOUNDING SURVEY / VES-CURVES**
- Appendix 5** **WATER QUALITY SURVEY / RESULTS OF WATER
QUALITY ANALYSIS**
- Appendix 6** **WATER QUALITY STANDARDS AND ANALYSIS
METHODS**
- Appendix 7** **TEST WELL DRILLING AND PUMPING TESTS**

MAY 2002

**NIPPON KOEI CO., LTD.
NIHON SUIDO CONSULTANTS CO., LTD.**

S S S
JR
02-102

Exchange Rate as of the end of October 2001

US\$1 = JP¥121.92 = Rp.10,435

LIST OF VOLUMES

VOLUME I EXECUTIVE SUMMARY

VOLUME II MAIN REPORT

VOLUME III SUPPORTING REPORT 1

WATER SOURCES

Appendix 1 VILLAGE MAPS

Appendix 2 HYDROMETEOROLOGICAL DATA

Appendix 3 LIST OF EXISTING WELLS AND SPRINGS

Appendix 4 ELECTRIC SOUNDING SURVEY / VES-CURVES

Appendix 5 WATER QUALITY SURVEY / RESULTS OF WATER QUALITY ANALYSIS

Appendix 6 WATER QUALITY STANDARDS AND ANALYSIS METHODS

Appendix 7 TEST WELL DRILLING AND PUMPING TESTS

VOLUME IV SUPPORTING REPORT 2

WATER SUPPLY SYSTEM

Appendix 8 QUESTIONNAIRES ON EXISTING WATER SUPPLY SYSTEMS

Appendix 9 SURVEY OF EXISTING VILLAGE WATER SUPPLY SYSTEMS AND RECOMMENDATIONS

Appendix 10 PRELIMINARY BASIC DESIGN STUDIES

VOLUME V SUPPORTING REPORT 3

CONSTRUCTION PLAN AND COST ESTIMATES

Appendix 11 CONSTRUCTION PLAN

Appendix 12 COST ESTIMATES

VOLUME VI SUPPORTING REPORT 4

ORGANIZATION AND MANAGEMENT

Appendix 13	SOCIAL DATA
Appendix 14	SUMMARY OF VILLAGE PROFILES
Appendix 15	RAPID RURAL APPRAISAL / SUMMARY SHEETS OF RAPID RURAL APPRAISAL (RRA) SURVEY
Appendix 16	SKETCHES OF VILLAGES
Appendix 17	IMPLEMENTATION PROGRAM FOR HEALTH AND HYGIENE EDUCATION
Appendix 18	MANUAL OF HYGIENE AND SANITATION EDUCATION
Appendix 19	COMMUNITY OPERATION AND MAINTENANCE PLAN
Appendix 20	PDAM DATA

OUTLINE OF THE STUDY – Bahasa Indonesia

GARIS BESAR STUDI & SEMINAR UNTUK ALIH TEKNOLOGI

ABBREVIATIONS

ADB	Asian Development Bank
APBD I	Anggaran Pendapatan dan Belanja Daerah Tingkat I (Provincial Budget)
APBD II	Anggaran Pendapatan dan Belanja Daerah Tingkat II (District Budget)
APBN	Anggaran Pendapatan dan Belanja National (National Budget)
ARI	Acute Respiratory Infections
AusAID	Australian Agency for International Development
BAPPEDA	Badan Perencanaan Pembangunan Daerah Tingkat-I and Tingkat-II (Development Planning Board for Provincial and District Level)
BAPPENAS	Badan Perencanaan Pembangunan Nasional (National Development Planning Board)
BDD	Bidan di Desa (Village midwife)
BHN	Basic Human Needs
BMG	Biro Meteorologi dan Geofisika (Meteorology and Geophysic Agency)
BPAM	Badan Pengelola Air Minum (Management Board for new Drinking Water Projects before being established as a PDAM)
BPD	Village Representative Council
BPL	Below Poverty Line
BPS	Biro Pusat Statistik (Central Bureau of Statistics)
BPT	Break Pressure Tank
Broncaptering	Any small structure built to 'capture' a water source
Buis beton	Traditional concrete rings used to line hand-dug wells
Bupati	Kepala Kabupaten (Head of a District; sometimes called "Regent")
Camat	Kepala Kecamatan (Head of a Sub-District)
CARE	Co-operative for Assistance and Relief Everywhere (International NGO)
CCF	Christian Children's Fund
CIDA	Canadian International Development Agency
Cipta Karya	Direktorat Jenderal Cipta Karya (Directorate General of Human Settlements DGHS)now restructured and integrated into Ministry of Settlement and Regional Infrastructure
CMR	Child Mortality Rate
DATI I	Daerah Tingkat I (Provincial Government Level)
DATI II	Daerah Tingkat II (District Government Level)
Desa	Rural village, lowest level of local Government
DG	Directorate General
Dinas	Provincial or District level governmental department
DIP	Daftar Isian Proyek (List of Development Projects)
DPU	Generic term for all departments of Public Works now included in Kimpraswil.
Dukun	Traditional birth attendant
DUPDA	Daftar Usulan Proyek Daerah (List of Proposed Yearly Development Projects at Tk.II.)
Dusun	Sub-Village/Hamlet in rural area
EC	Electric Conductivity
EIIKK	Eastern Islands IKK Water Supply and Sanitation Project (Aus AID program)

ESWS	NTB Environmental Sanitation and Water Supply Project (Aus AID program)
FGD	Focus Group Discussions
FIRR	Financial Internal Rate of Return
FLAWS	Flores Water Supply and Sanitation Reconstruction and Rural Development Project (AusAID program)
FRP	Fiber Reinforced Plastics
GIP	Galvanized Iron Pipe
GL	Ground Level
GOI	Government of Indonesia
GOJ	Government of Japan
GRDP	Gross Regional Domestic Product
GSP	Galvanized Steel Pipe
GTZ	German Technical Cooperation Agency
Hamlet	A small rural community not recognized as a Dusun
HC	House Connection (To a piped water supply system, usually metered)
HDPE	High Density Polyethylene Pipe
IBRD	International Bank for Reconstruction and Development (World Bank)
IEC	Information, Education and Communication
IGA	Income Generation Activities
IKK	Ibu Kota Kecamatan (Core Area of a Sub-District)
IMR	Infant Mortality Rate
Ir.	Insinyur (The Professional title 'Engineer')
JBIC	Japan Bank For International Cooperation
JICA	Japan International Cooperation Agency
K. Desa	Kepala Desa (Head of a Village - Lowest official level of local Government)
Kabupaten/Kab	District/Regency (Local Government level II or Tk.II)
Kampung	General term for any sub-village or hamlet, but more commonly used in urban and rural areas
Kecamatan	Sub-District
Kelompok	An unofficial committee or group of people
Kelurahan	Urban village, the lowest administrative unit in status equal to a Desa
Kepala Desa	Head of a Village (Lowest official level of local Government)
Kepala Dusun	Head of a Hamlet
Kepala Suka	Traditional Religions Leader (In Sumba)
Keputusan	Decree
KFW	German Development Bank
KHPPIA	Kelangsungan Hidup Perkembangan Perlindungan Ibu dan Anak (Development and Protection for Mother and Child)
Kimpraswil	Permukiman dan Prasarana Wilayah (Ministry of Settlement and Regional Infrastructure)
KK or K/K	Kepala Keluarga (Head of a family)
KLP	Koperasi Listrik Pedesaan
Kotamadya	City - equivalent administrative status to a Kabupaten
LBW	Low Birth Weight
LKMD	Lembaga Ketahanan Masyarakat Desa (Village self reliance organization, village development council)

LRWSS	Lombok Rural Water Supply and Sanitation Project (AusAID program)
Lb.	Labuhan (Common place name) Coastal plain behind the seashore
M.A.	Mata Air (Spring)
MOH	Ministry of Health
MOHA	Ministry of Home Affairs (Dalam Negeri)
MOU	Memorandum of Understanding
MSRI	Ministry of Settlement and Regional Infrastructure
Musbangdes	Musyawahar Pembangunan Desa (Village development planning discussion)
NGO	Non-governmental Organization
NTB	Nusa Tenggara Barat (West Nusa Tenggara)
NTT	Nusa Tenggara Timur (East Nusa Tenggara)
O&M	Operasi dan Pemeliharaan (Operation and Maintenance)
O/H	Overhead (High tension electric power line)
OECE	The former Overseas Economic Cooperation Fund of Japan (now JBIC)
P2AT	Proyek Pengembangan Air Tanah (Groundwater Development Project)
P3P	Proyek Peningkatan Prasarana Pemukiman (formerly P3AB) (Development and Management of Water Supply Construction Projects)
PAM	Perusahaan Air Minum (Water Enterprises) Generic term used for PDAM and BPAMs
PDAM	Perusahaan Daerah Air Minum (Regional Drinking Water Enterprise)
PEMDA	Pemerintah Daerah. Local government at any level, usually MOHA
PERPAMSI	Persatuan Perusahaan Air Minum Seluruh Indonesia (Indonesian Water Supply Association)
Peraturan	Regulation
PH	Public Hydrant
PKK	Pembinaan Kesejahteraan Keluarga (Local Women's Welfare Organization)
PLN	Perusahaan Listrik Negara (National Electricity Enterprise)
PMD	Department of Community Empowerment
POKMAIR	Kelompok Pemakai Air (WUG)
Polindes	Poliklinik Desa (Village health sub-clinic)
Propinsi	Province (First level of local government Tk.I.)
Puskesmas	Pusat Kesehatan Masyarakat (Village Health Center)
PVC	Unplasticized Polyvinyl Chloride (Pipe)
PVP	Photovoltaic System
Rakorbang	Rapat Koordinasi Pembangunan (Project/Budget selection discussion at Tk.II) (Coordination Meeting for Development Budget Planning)
RC	RC (Reinforced Concrete)
RDWS	GOI Rural Water Supply Development Program
RESV	Reservoir
RK	Rukun Kampung (Hamlet in a rural area)
RRA	Rapid Rural Appraisal
RT/RW	Rukun Tetangga (Neighborhood)/Rukun Warga (Hamlet in an urban area)
RWSS	Rural Water Supply and Sanitation Project (ADB program)
Sawah	An area of irrigated land used for growing paddy
SC	Specific Capacity
Sekretaris	Secretary, as in Sekretaris Desa

SISKES	GOI Health Services Improvement Program
SSF	Slow Sand Filter (Water Treatment Plant))
SWL	Static Water Level
T	Temperature
TB	Tuberculosis
TBA	Traditional Birth Attendant
TNI	Tentara Nasional Indonesia. The Indonesian armed force
TP-PKK	Women's Movement Organization
Tk.I	Tingkat I. The first level of local government. I.e. Province
Tk.II	Tingkat II. The second level of local government. I.e. District
U5MR	Under 5 Mortality Rate
UDKP	Usulan Kecamatan (List of Development Planning Proposals)
UFW	Unaccounted-for-Water
UNDP	United Nations Development Program
UNICEF	United Nation Children's Fund
UU	Undang Undang (Law)
VAP	Village Action Plan
VES	Vertical Electric Sounding
WSS	Water Supply and Sanitation
WSSLIC	Water Supply and Sanitation Project for Low Income Communities (World Bank program)
WTP	Water Treatment Plant
WUA	Water Users' Association
WUG	Water Users' Group

UNITS

Length

mm = millimeter
cm = centimeter
m = meter
km = kilometer

Electric Measurement

V = Volt
A = Ampere
Hz = Hertz
W = Watt
kW = Kilowatt
MW = Megawatt

Area

cm² = square centimeter
m² = square meter
km² = square kilometer
Ha/ha = hectare

Others

% = percent
HP = horsepower
°C = Celsius degree

Volume

cm³ = cubic centimeter
m³ = cubic meter
L = liter
MCM = million cubic meter

Derived Measures

L/c/day = liter per capita per day
kWh = kilowatt-hour
MWh = megawatt-hour
kVA = kilovolt ampere
mg/L = milligram per liter
 μ g/L = microgram per liter
meq/L = milliequivalent per liter
mS/m = millisiemens per meter

Weight

mg = milligram
g = gram
kg = kilogram

Time as denominator

/sec. = per second
/min. = per minute
/hr. = per hour
/day = per day
/month = per month
/yr. = per year

Abbreviation

m.bgl = meter below ground level
m.agl = meter above ground level
m.asl = meter above mean sea level
m.bsl = meter below mean sea level

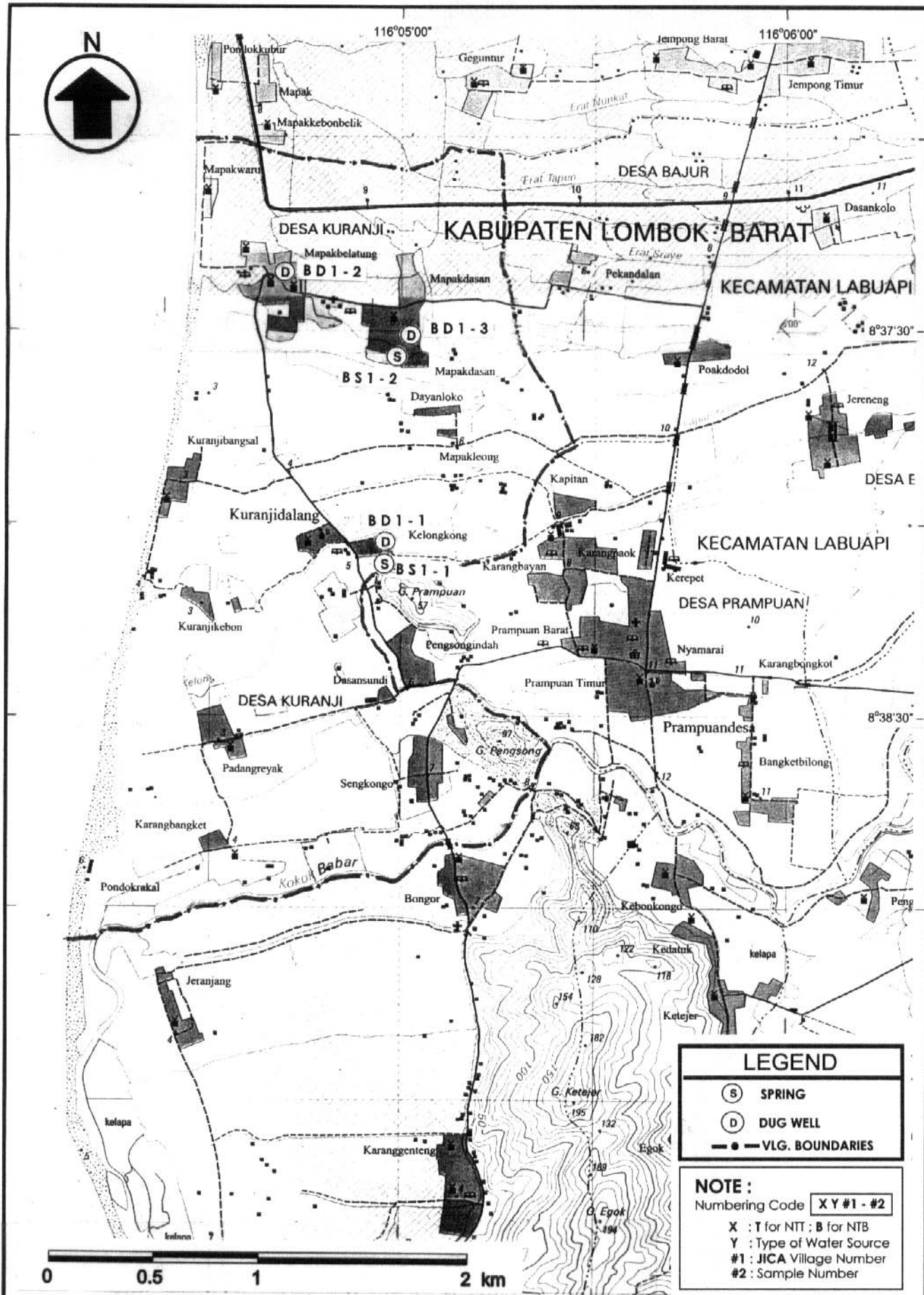
Appendix 1
VILLAGE MAPS

Appendix 1
VILLAGE MAPS

TABLE OF CONTENTS

1.1	Desa Kuranji	- NTB (JICA#1)	A1-1
1.2	Desa Bajur	- NTB (JICA#2)	A1-2
1.3	Desa Sembung	- NTB (JICA#3)	A1-3
1.4	Desa Duman	- NTB (JICA#4)	A1-4
1.5	Desa Peresak	- NTB (JICA#5)	A1-5
1.6	Desa Jelantik	- NTB (JICA#6)	A1-6
1.7	Desa Labulia	- NTB (JICA#7)	A1-7
1.8	Desa Setanggor	- NTB (JICA#8)	A1-8
1.9	Desa Rembitan	- NTB (JICA#9)	A1-9
1.10	Desa Bagik Papan	- NTB (JICA#10)	A1-10
1.11	Desa Selaparang	- NTB (JICA#11)	A1-11
1.12	Desa Batu Nampar	- NTB (JICA#12)	A1-12
1.13	Desa Labuhan Mapin	- NTB (JICA#13)	A1-13
1.14	Desa Labuhan Lalar	- NTB (JICA#14)	A1-14
1.15	Desa Poto	- NTB (JICA#15)	A1-15
1.16	Desa Piong	- NTB (JICA#16)	A1-16
1.17	Desa Labuhan Kenanga	- NTB (JICA#17)	A1-17
1.18	Desa Kawuwu	- NTB (JICA#18)	A1-18
1.19	Desa Ranggo	- NTB (JICA#19)	A1-19
1.20	Desa Jambu	- NTB (JICA#20)	A1-20
1.21	Desa Hodo	- NTB (JICA#21)	A1-21
1.22	Desa Kwango	- NTB (JICA#22)	A1-22
1.23	Desa Mekendetung	- NTT (JICA#4)	A1-23
1.24	Desa Kokowahor	- NTT (JICA#5)	A1-24
1.25	Desa Sinar Hading	- NTT (JICA#6)	A1-25
1.26	Desa Ile Padung	- NTT (JICA#7)	A1-26
1.27	Desa Watuneso	- NTT (JICA#8)	A1-27
1.28	Desa Borokanda	- NTT (JICA#9)	A1-28

1.29	Desa Bheramari	- NTT (JICA#10)	A1-29
1.30	Desa Nggorea	- NTT (JICA#11)	A1-30
1.31	Desa Ndetundora I	- NTT (JICA#12)	A1-31
1.32	Desa Hepang	- NTT (JICA#13)	A1-32
1.33	Desa Bloro	- NTT (JICA#14)	A1-33
1.34	Desa Watuliwung	- NTT (JICA#15)	A1-34
1.35	Desa Patiala Dede	- NTT (JICA#16)	A1-35
1.36	Desa Welibo	- NTT (JICA#17)	A1-36
1.37	Desa Weerame	- NTT (JICA#18)	A1-37
1.38	Desa Kondamara	- NTT (JICA#19)	A1-38
1.39	Desa Pulu Panjang	- NTT (JICA#20)	A1-39
1.40	Desa Oebao	- NTT (JICA#21)	A1-40
1.41	Desa Sonimanu	- NTT (JICA#22)	A1-41
1.42	Desa Nusak Dale	- NTT (JICA#23)	A1-42
1.43	Desa Tarus	- NTT (JICA#24)	A1-43
1.44	Desa Bolok	- NTT (JICA#25)	A1-44



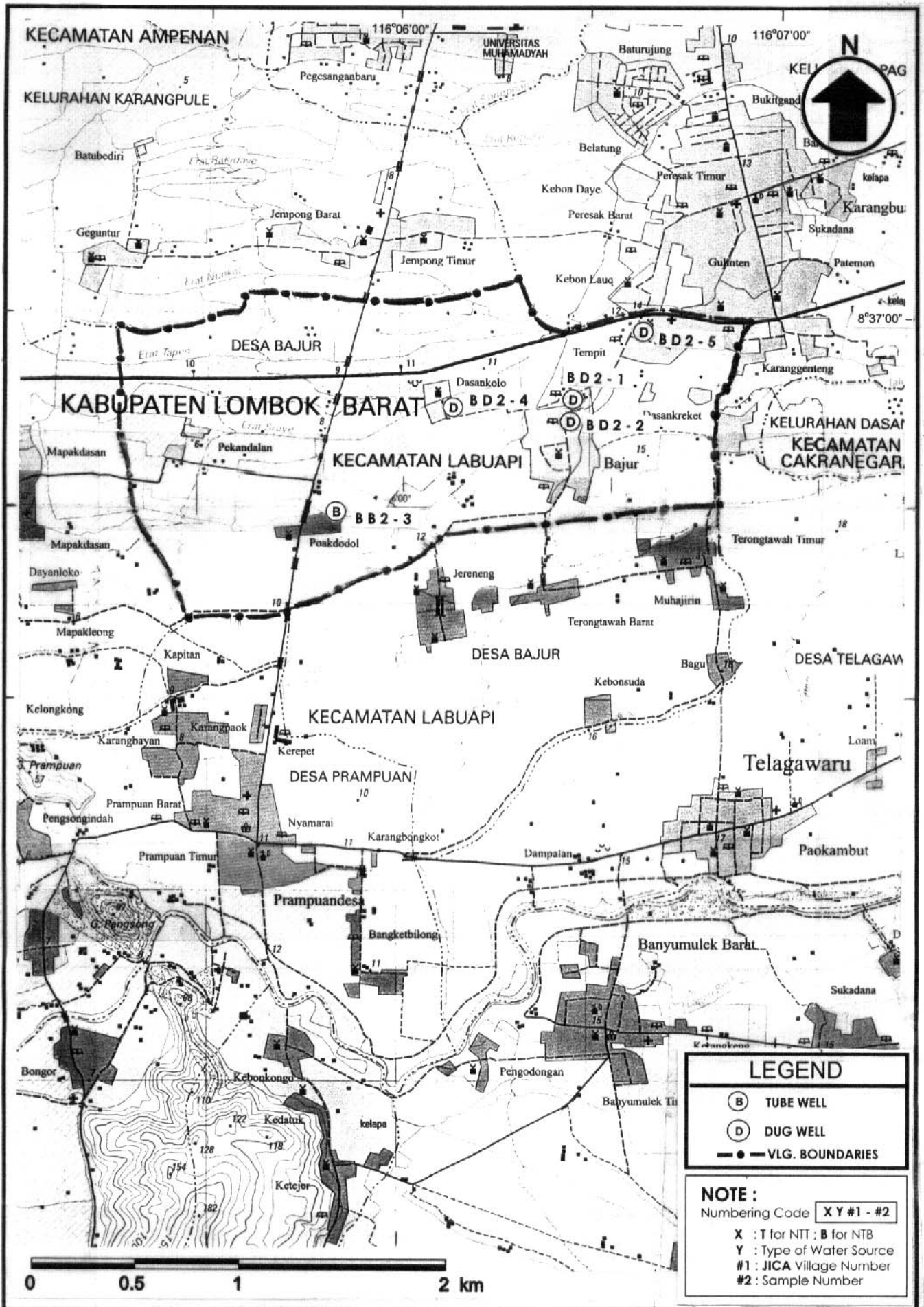
LEGEND

- (S) SPRING
- (D) DUG WELL
- VLG. BOUNDARIES

NOTE :
 Numbering Code **XY #1 - #2**
 X : T for NTT ; B for NTB
 Y : Type of Water Source
 #1 : JICA Village Number
 #2 : Sample Number

The Study on Rural Water Supply Project
 in Nusa Tenggara Barat and Nusa Tenggara Timur
 Japan International Cooperation Agency

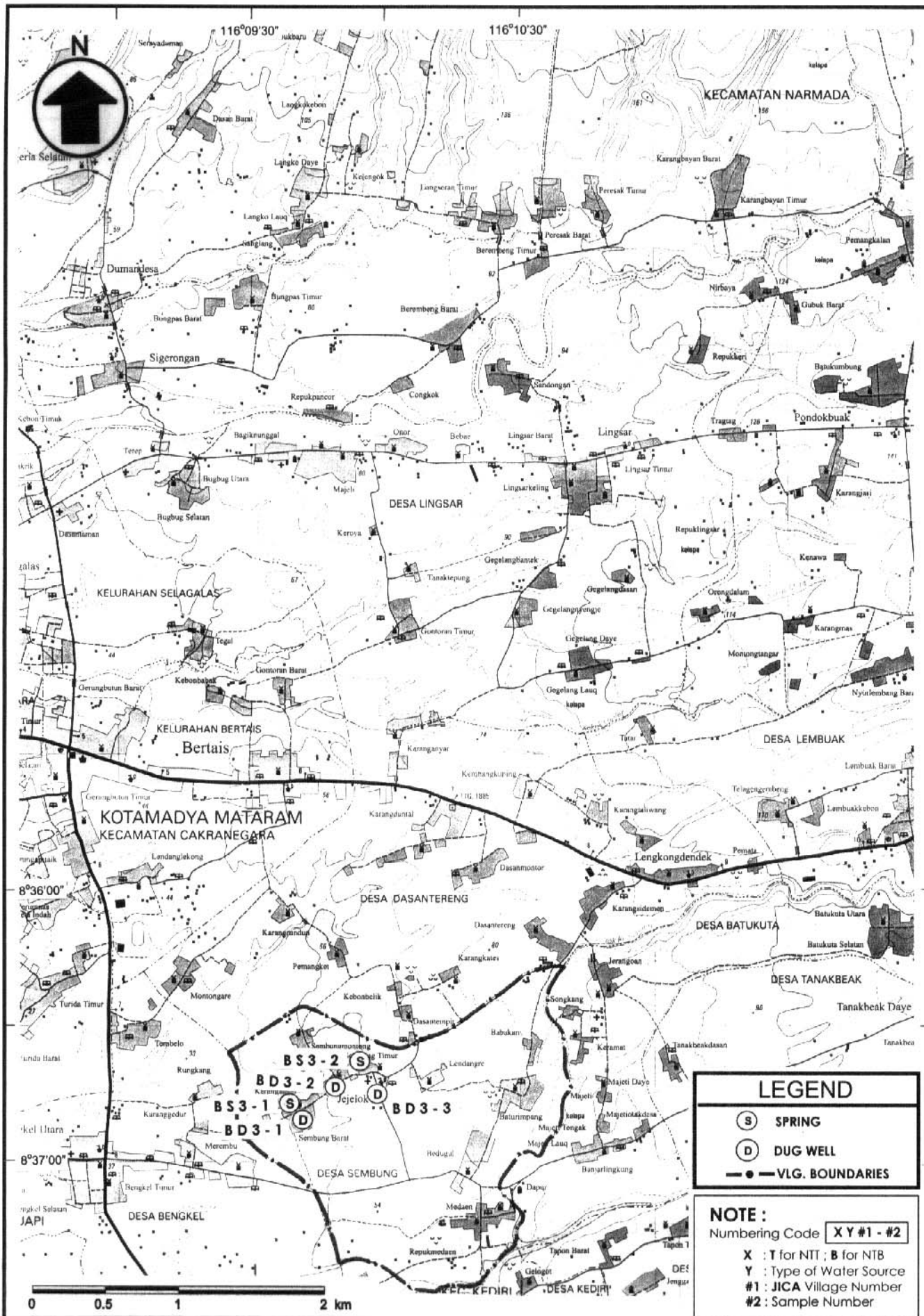
Appendix I.1
 Desa Kuranji - NTB (JICA # 1)



The Study on Rural Water Supply Project
 in Nusa Tenggara Barat and Nusa Tenggara Timur
 Japan International Cooperation Agency

Appendix 1.2

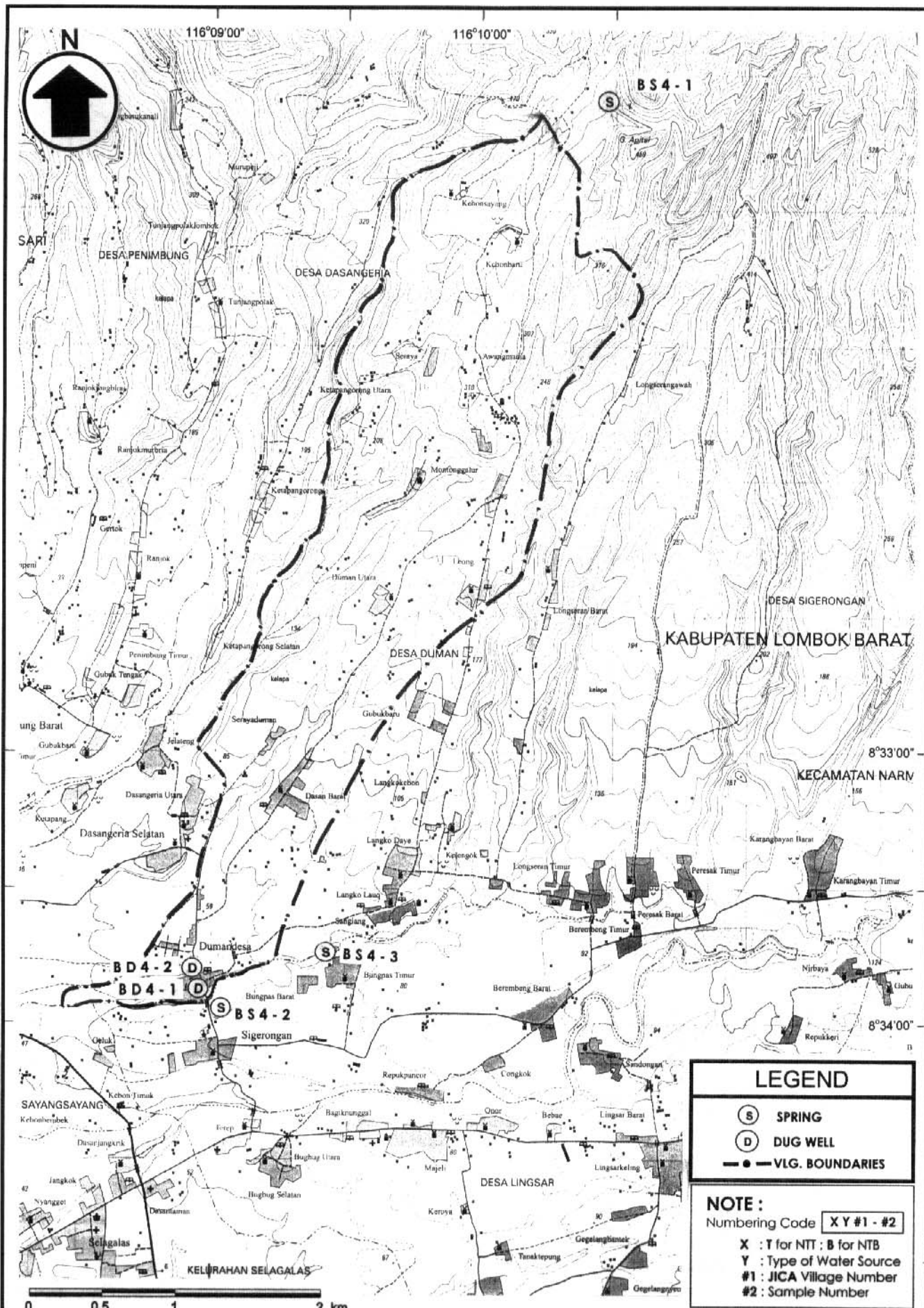
Desa Bujur - NTB (JICA # 2)



The Study on Rural Water Supply Project
 in Nusa Tenggara Barat and Nusa Tenggara Timur
 Japan International Cooperation Agency

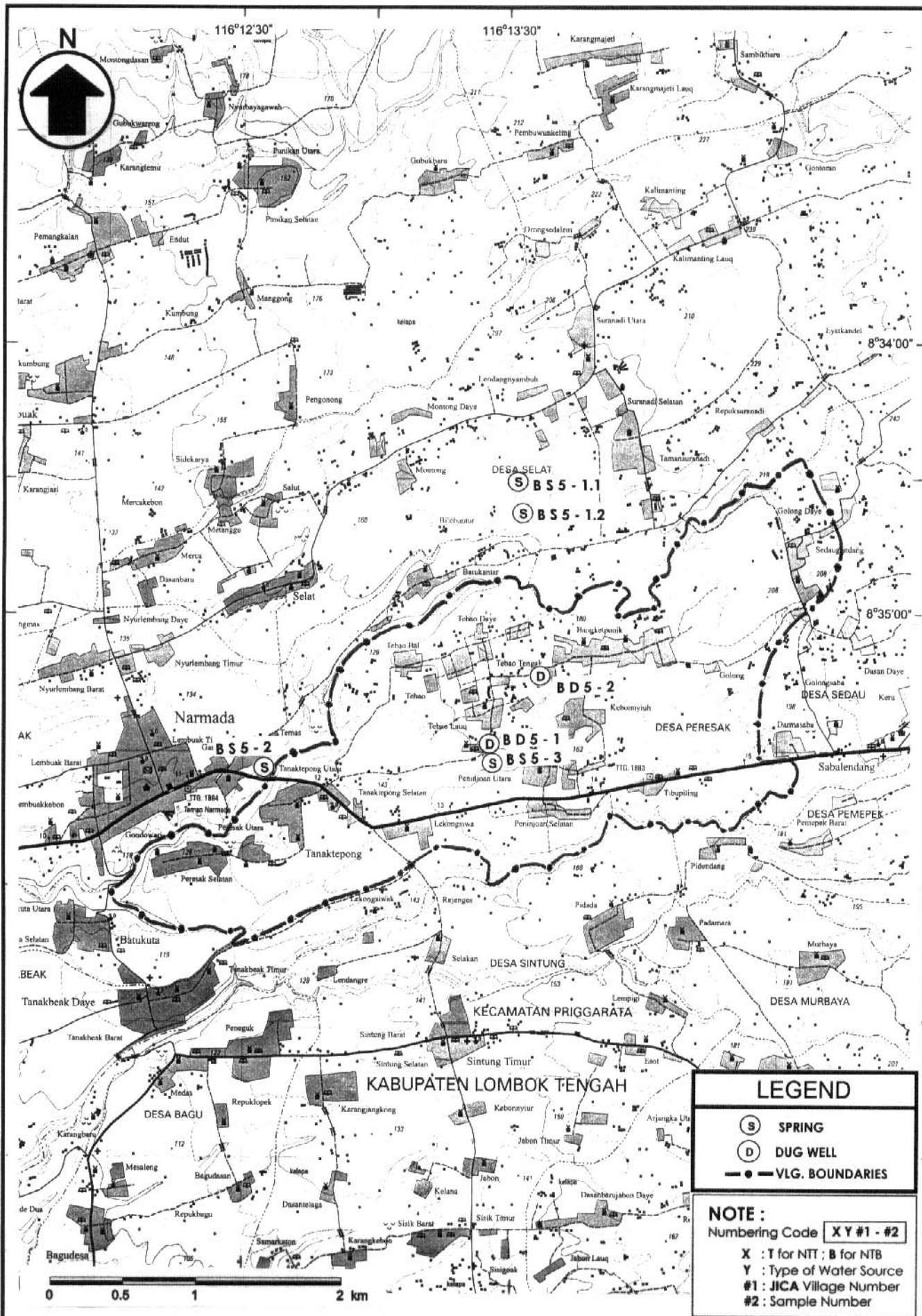
Appendix 1.3

Desa Sembung - NTB (JICA # 3)



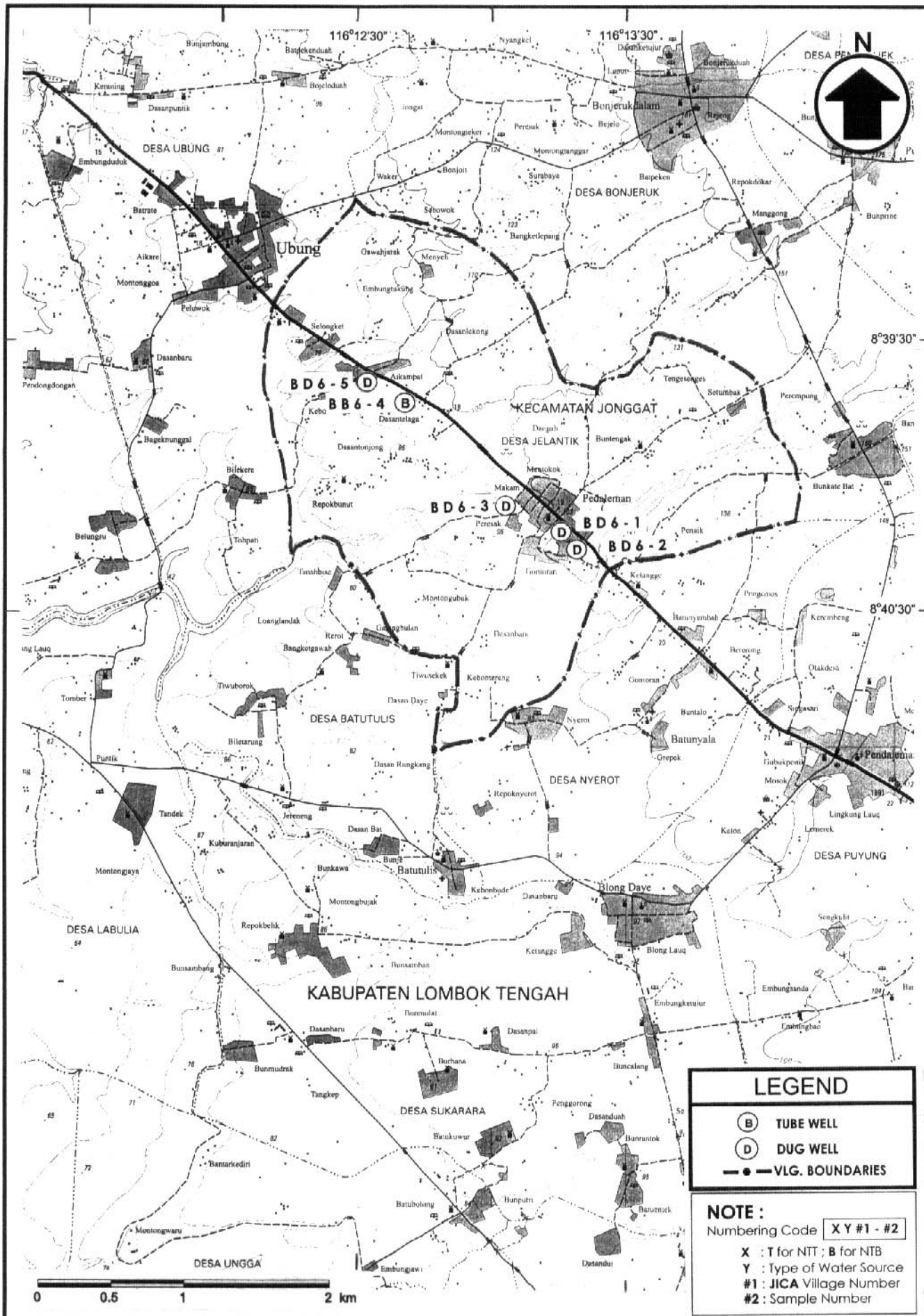
The Study on Rural Water Supply Project
 in Nusa Tenggara Barat and Nusa Tenggara Timur
 Japan International Cooperation Agency

Appendix 1.4
 Desa Duman - NTB (JICA # 4)



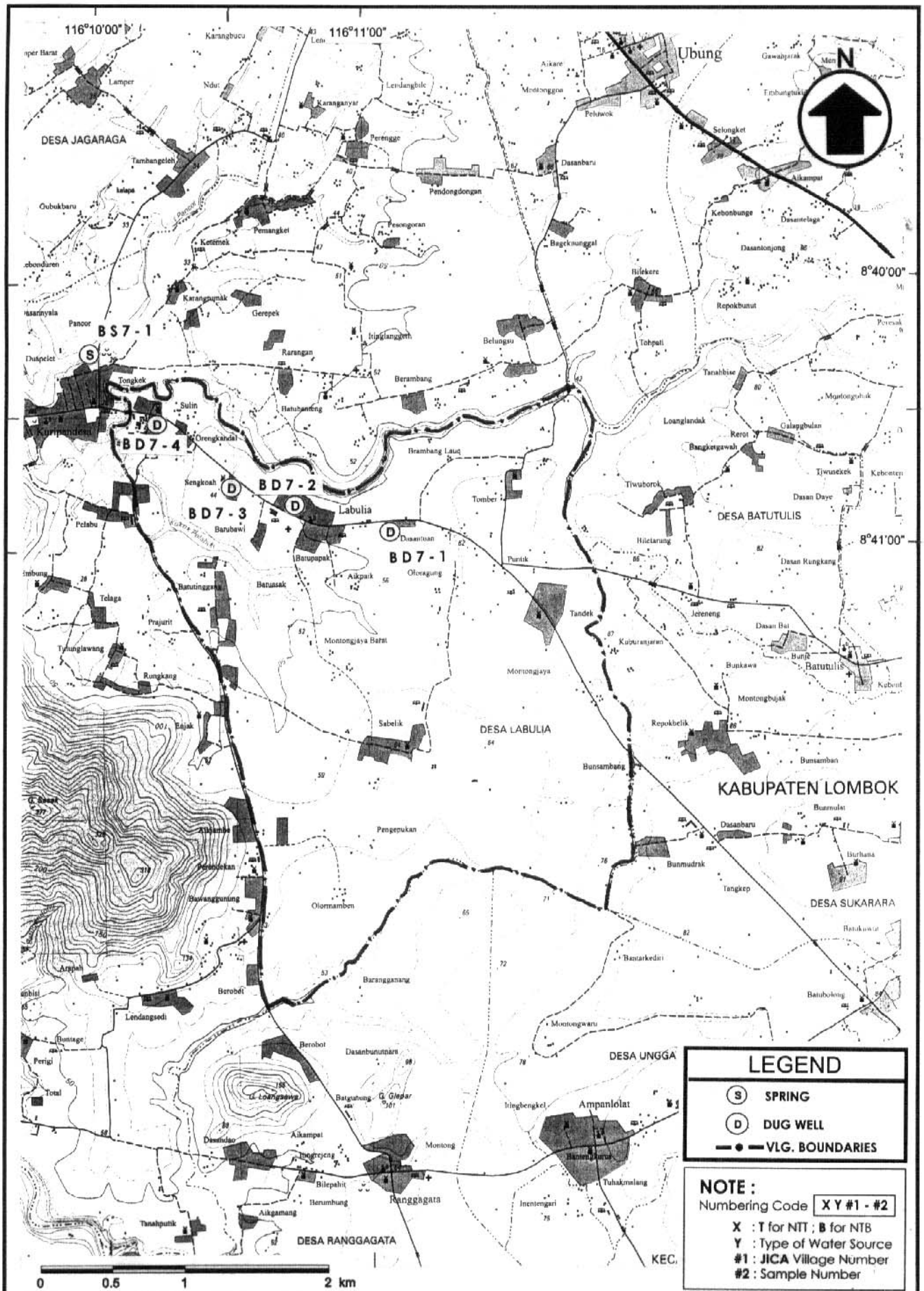
The Study on Rural Water Supply Project
 in Nusa Tenggara Barat and Nusa Tenggara Timur
 Japan International Cooperation Agency

Appendix 1.5
 Desa Peresak - NTB (JICA # 5)



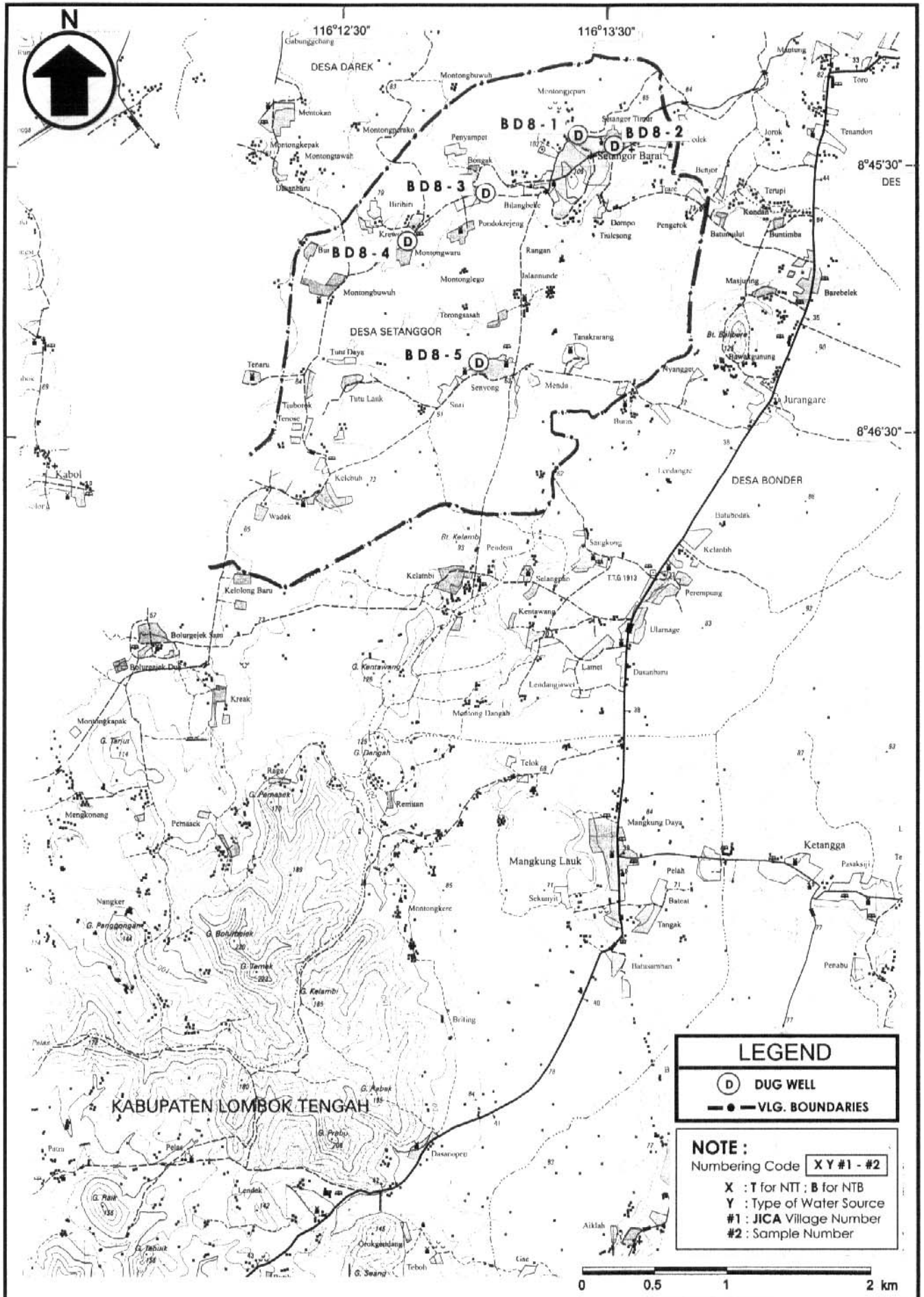
The Study on Rural Water Supply Project
 in Nusa Tenggara Barat and Nusa Tenggara Timur
 Japan International Cooperation Agency

Appendix I.6
 Desa Jelantik - NTB (JICA # 6)



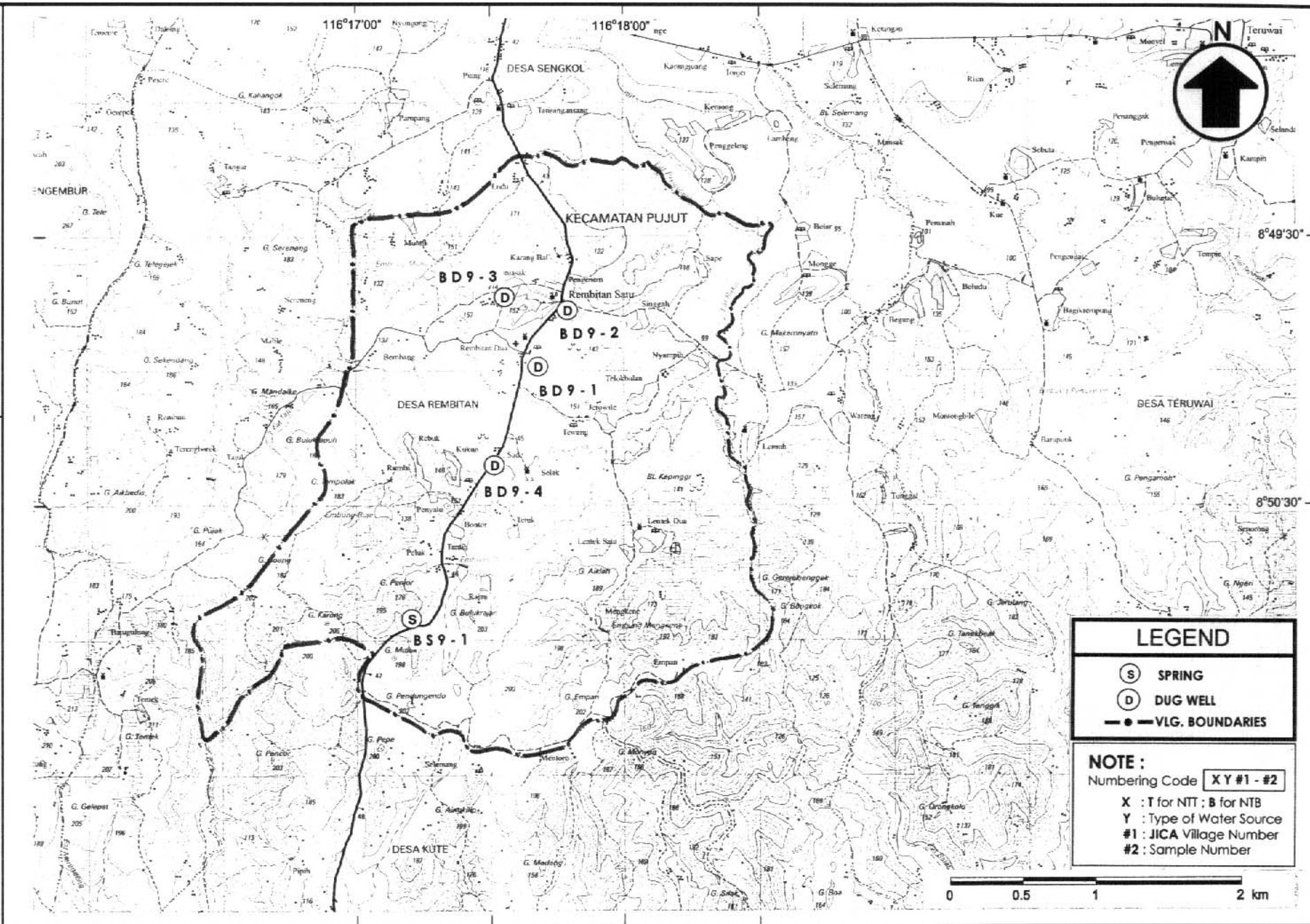
The Study on Rural Water Supply Project
 in Nusa Tenggara Barat and Nusa Tenggara Timur
 Japan International Cooperation Agency

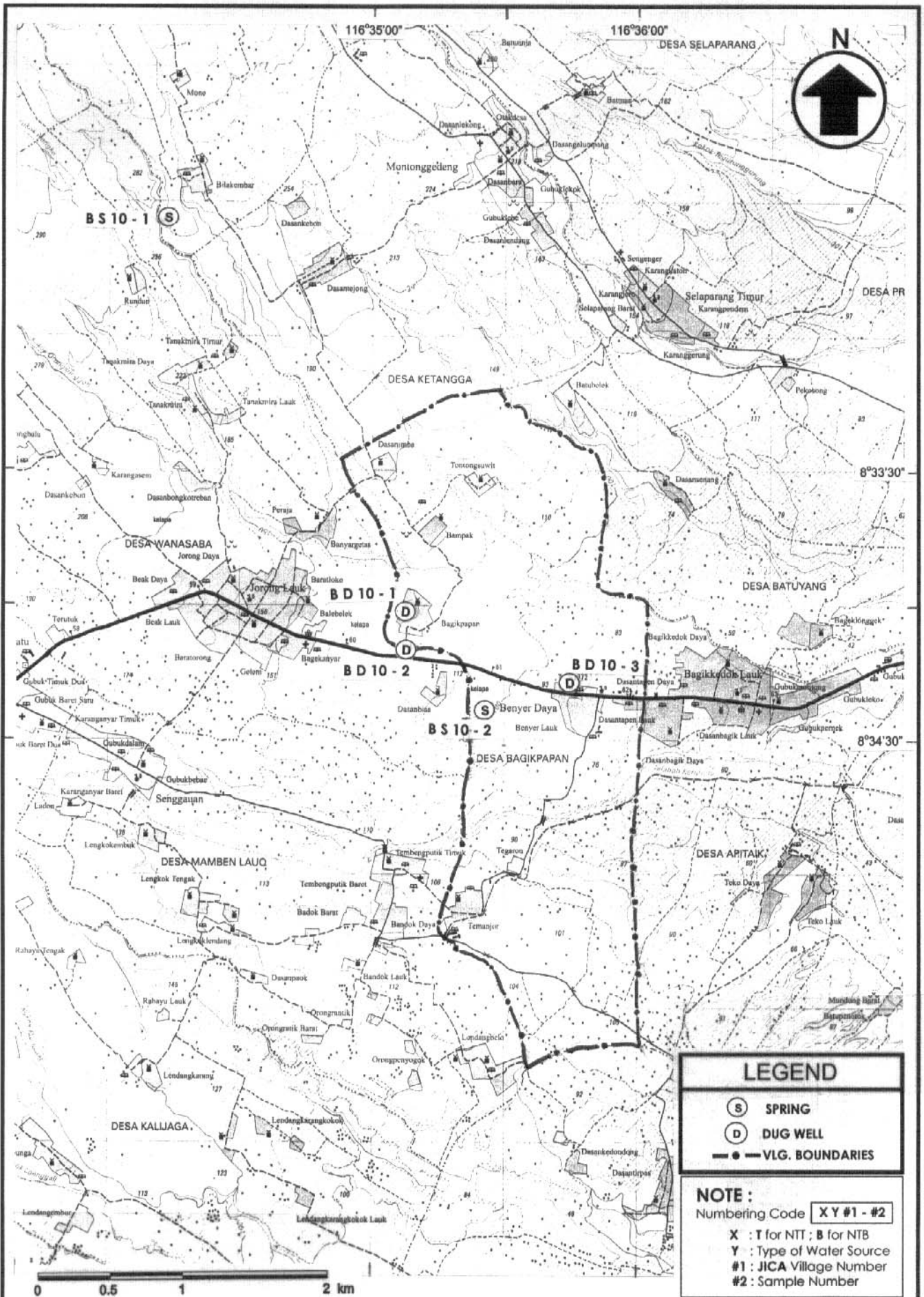
Appendix 1.7
 Desa Labulia - NTB (JICA # 7)



The Study on Rural Water Supply Project
 in Nusa Tenggara Barat and Nusa Tenggara Timur
 Japan International Cooperation Agency

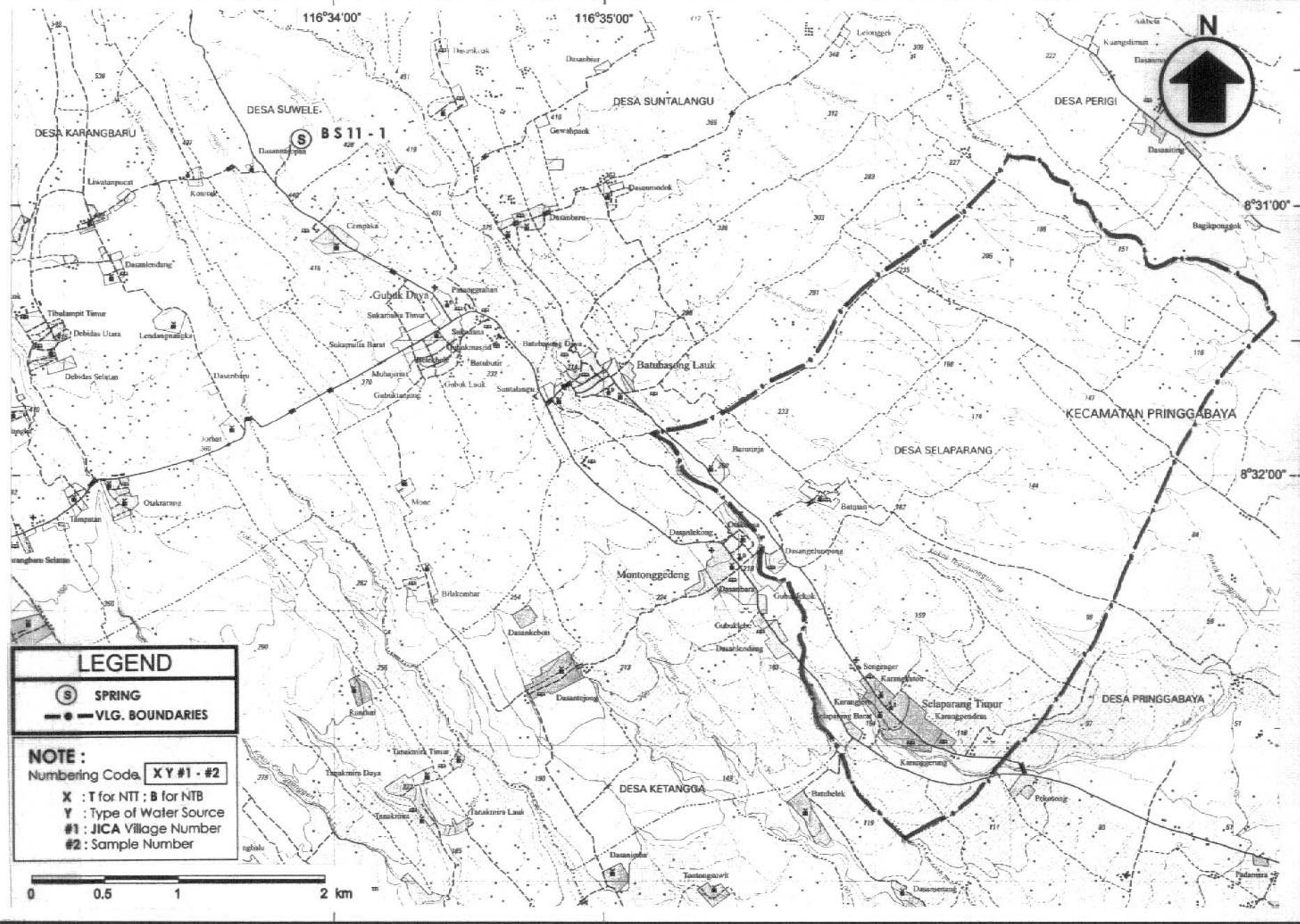
Appendix 1.8
 Desa Setanggor - NTB (JICA # 8)





The Study on Rural Water Supply Project
 in Nusa Tenggara Barat and Nusa Tenggara Timur
 Japan International Cooperation Agency

Appendix 1.10
 Desa Bagik Papan - NTB (JICA # 10)

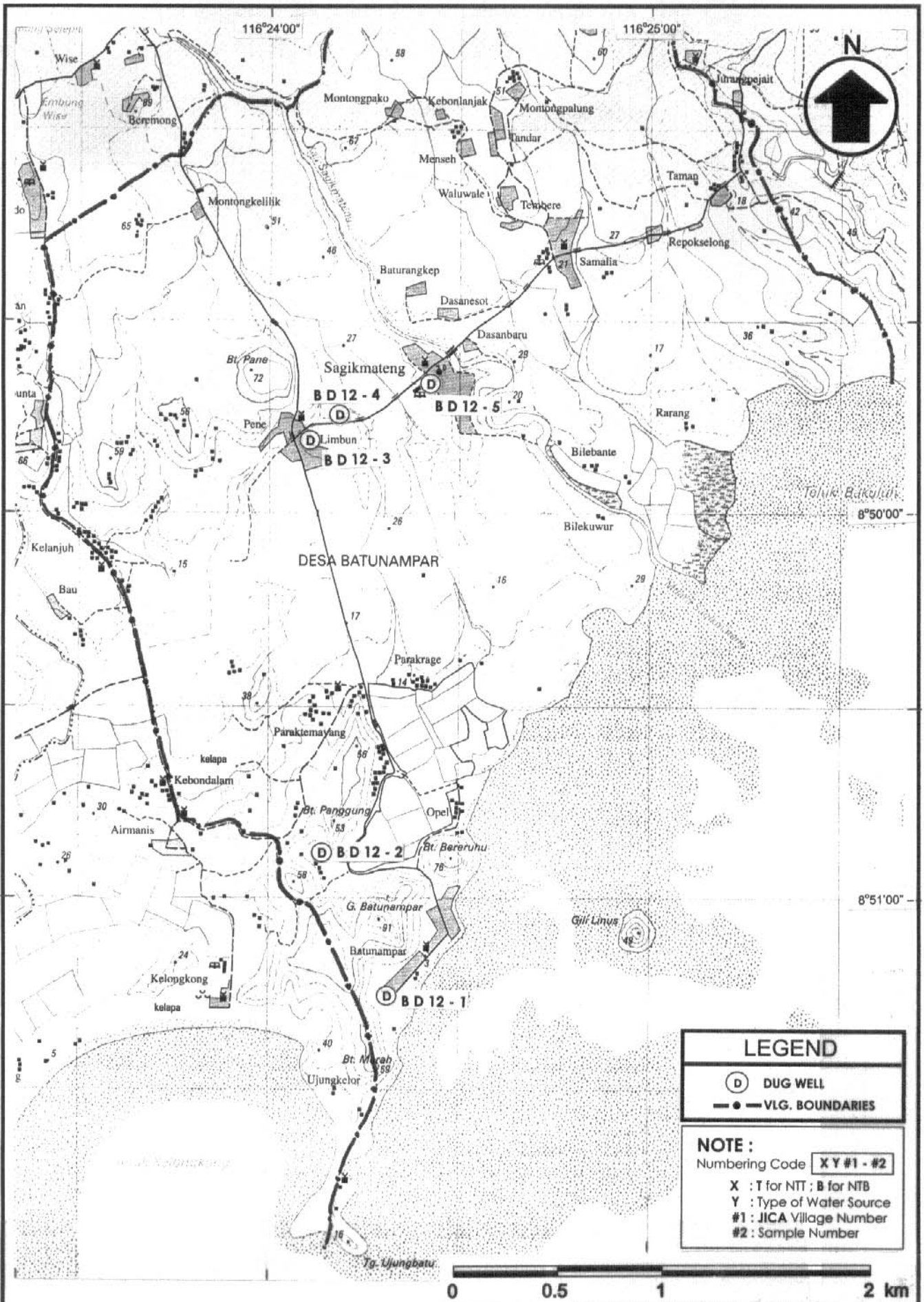


LEGEND

- S SPRING
- VLG. BOUNDARIES

NOTE :
 Numbering Code **XY #1 - #2**
X : T for NTT ; B for NTB
Y : Type of Water Source
#1 : JICA Village Number
#2 : Sample Number

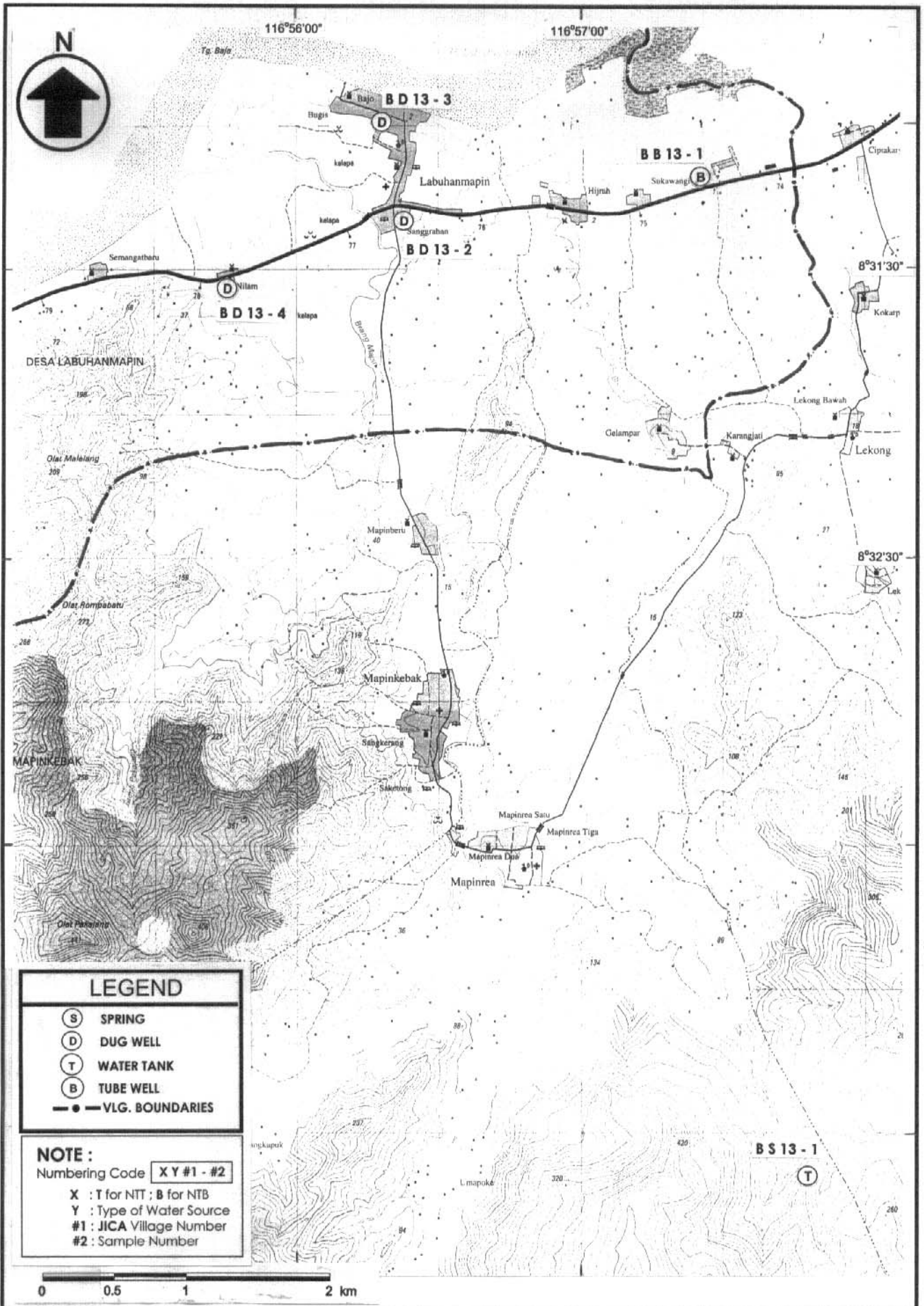




The Study on Rural Water Supply Project
 in Nusa Tenggara Barat and Nusa Tenggara Timur
 Japan International Cooperation Agency

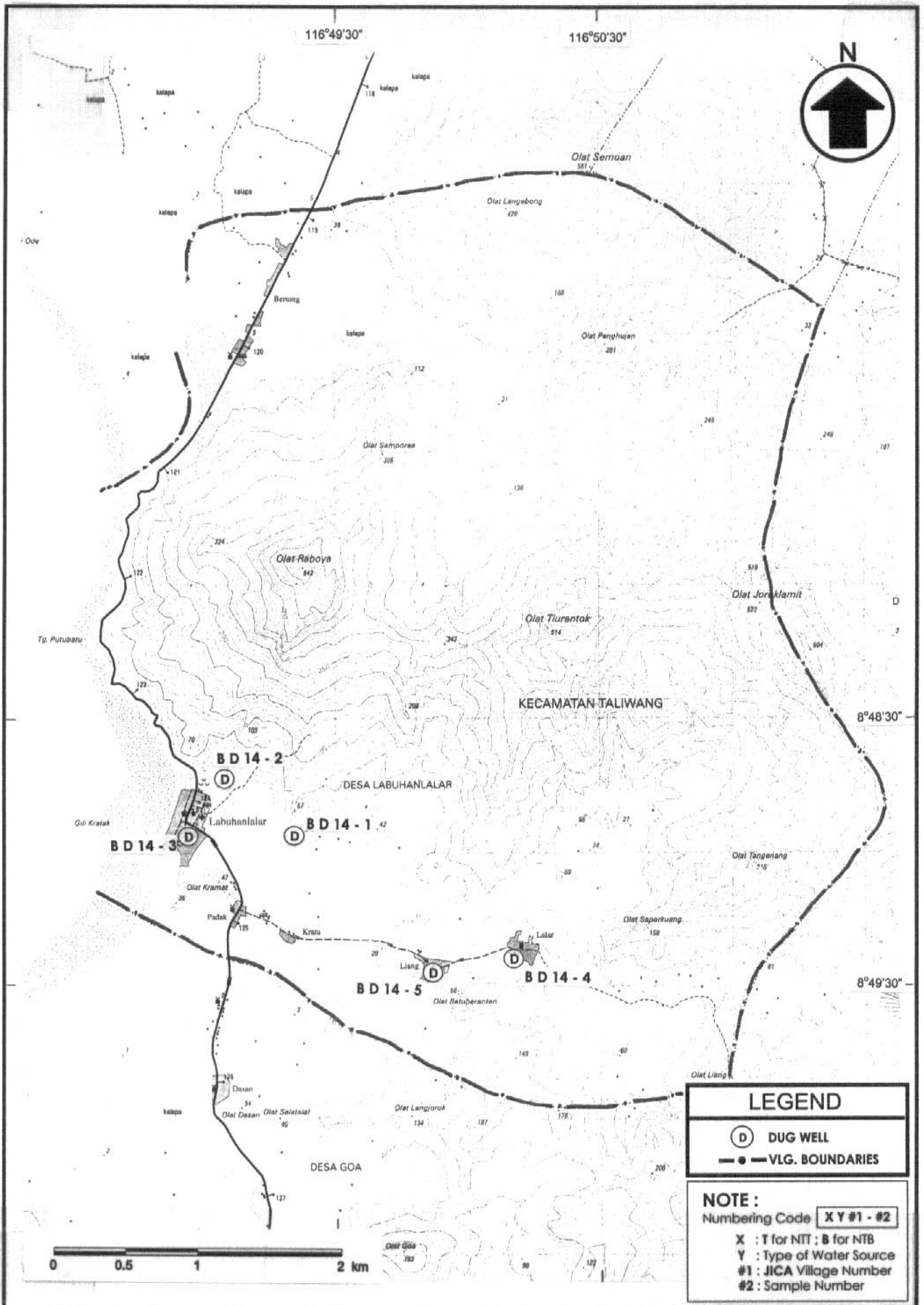
Appendix 1.12

Desa Batu Nampar - NTB (JICA # 12)



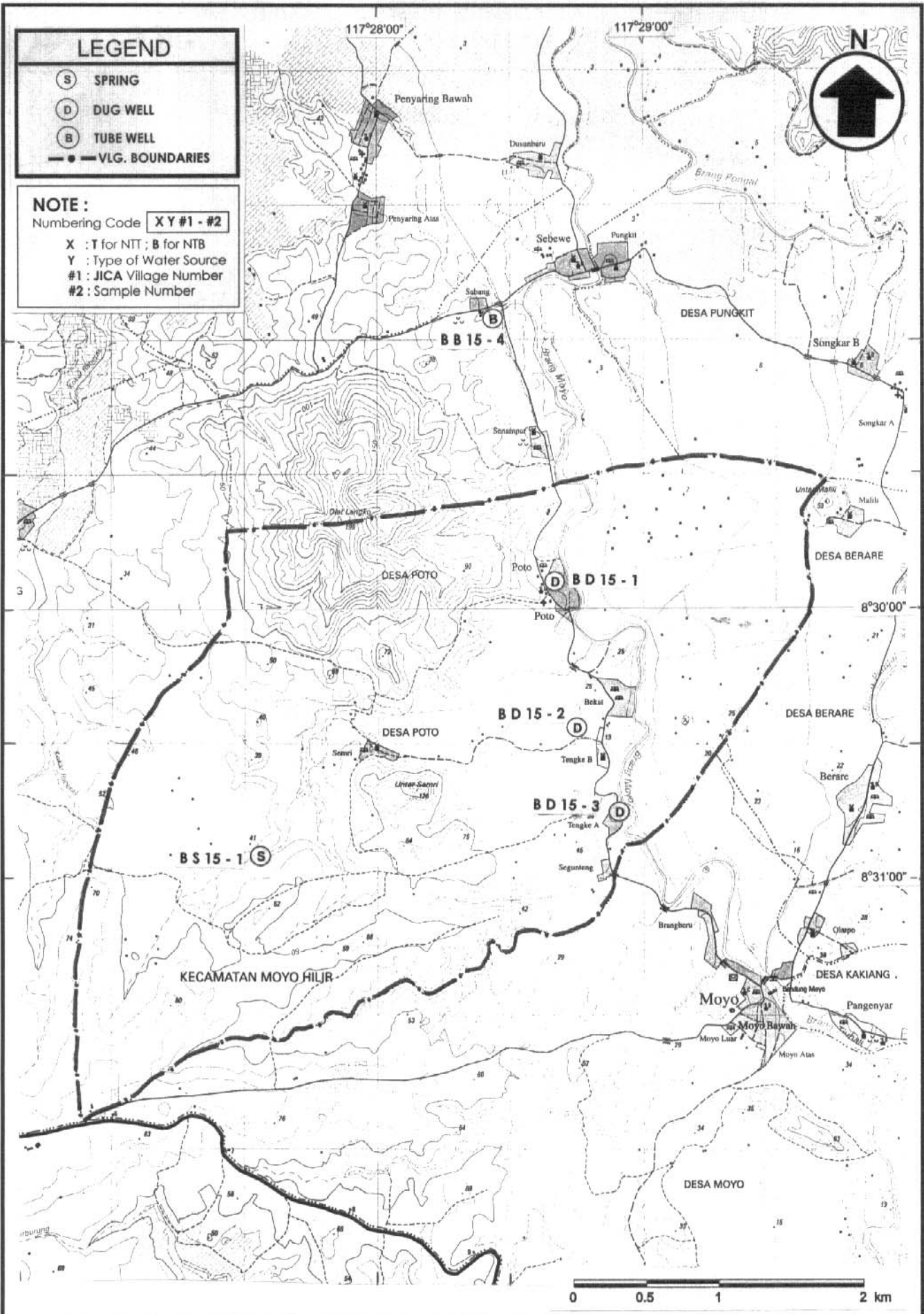
The Study on Rural Water Supply Project
 in Nusa Tenggara Barat and Nusa Tenggara Timur
 Japan International Cooperation Agency

Appendix 1.13
 Desa Labuhan Mapin - NTB (JICA # 13)



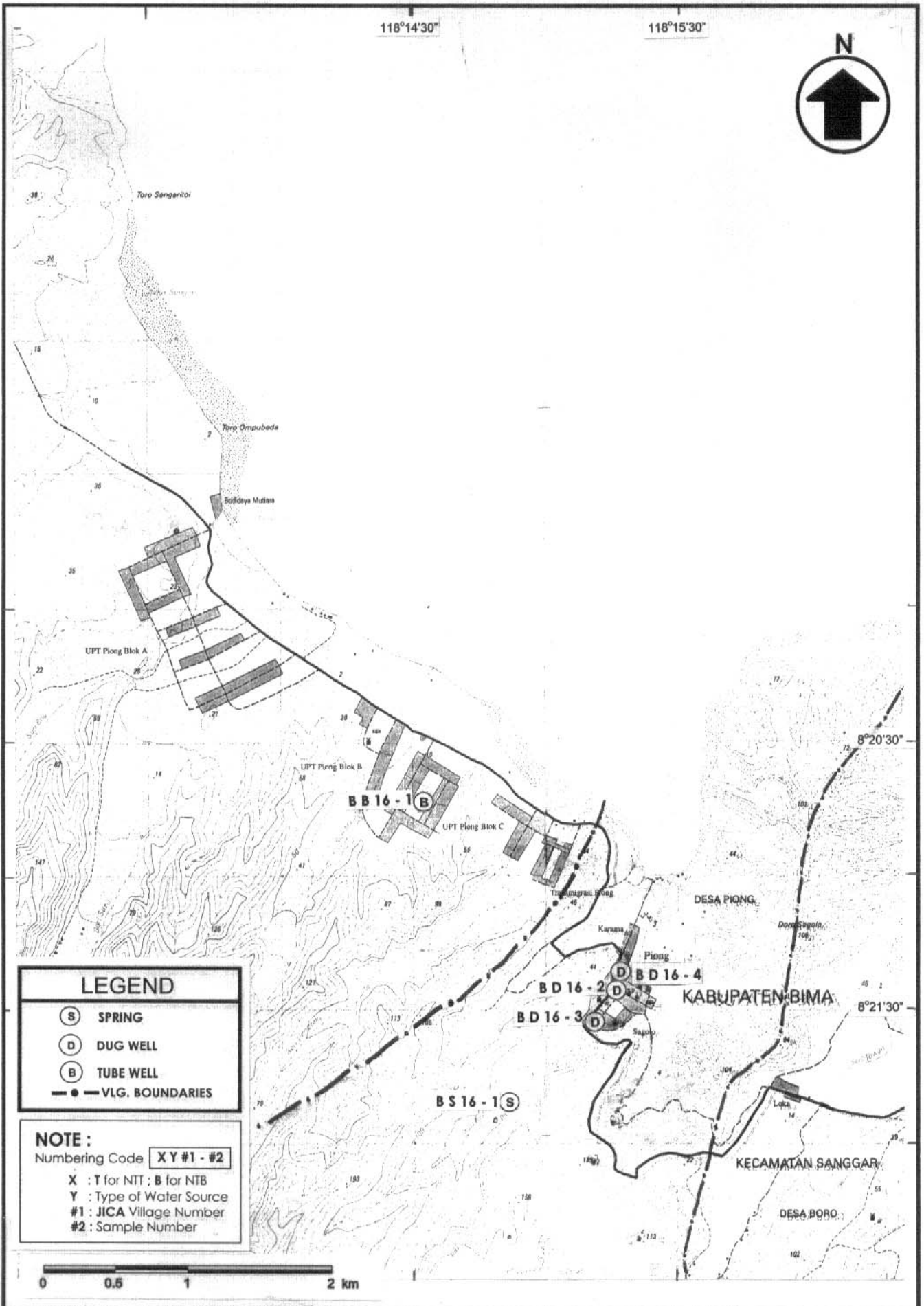
The Study on Rural Water Supply Project
 in Nusa Tenggara Barat and Nusa Tenggara Timur
 Japan International Cooperation Agency

Appendix 1.14
 Desa Labuhan Lalar - NTB (JICA # 14)



The Study on Rural Water Supply Project
 in Nusa Tenggara Barat and Nusa Tenggara Timur
 Japan International Cooperation Agency

Appendix 1.15
 Desa Poto - NTB (JICA # 15)



The Study on Rural Water Supply Project
 in Nusa Tenggara Barat and Nusa Tenggara Timur
 Japan International Cooperation Agency

Appendix 1.16

Desa Piong - NTB (JICA # 16)