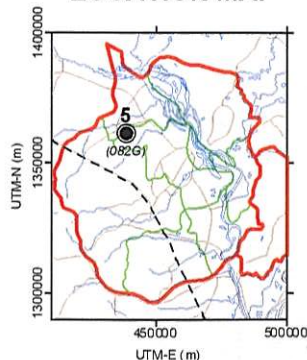


LOCATION MAP



WELL LOCATION

Province: Kg. Chhnang
District: Rorea Bier
Commune: Prasneb
Village: Prasneb
Village No.: 082G

Long.-E(deg): 104.4351
Lati.-N(deg): 12.3142
UTM-E(m): 438577
UTM-N(m): 1361365

WELL SPECIFICATION

Drilled Depth: 68.0 m
Well Depth: 62.0 m
Screen Depth(s): 44.11 - 58.025 m
Screen Length: 9.94 m
Ground Elevation: 23 m

Figure 4.2

Columnar Section and Well Structure of No. 5 Test Well (Vil. No. 082G)

THE STUDY ON GROUNDWATER DEVELOPMENT IN CENTRAL CAMBODIA

JAPAN INTERNATIONAL COOPERATION AGENCY (JICA)

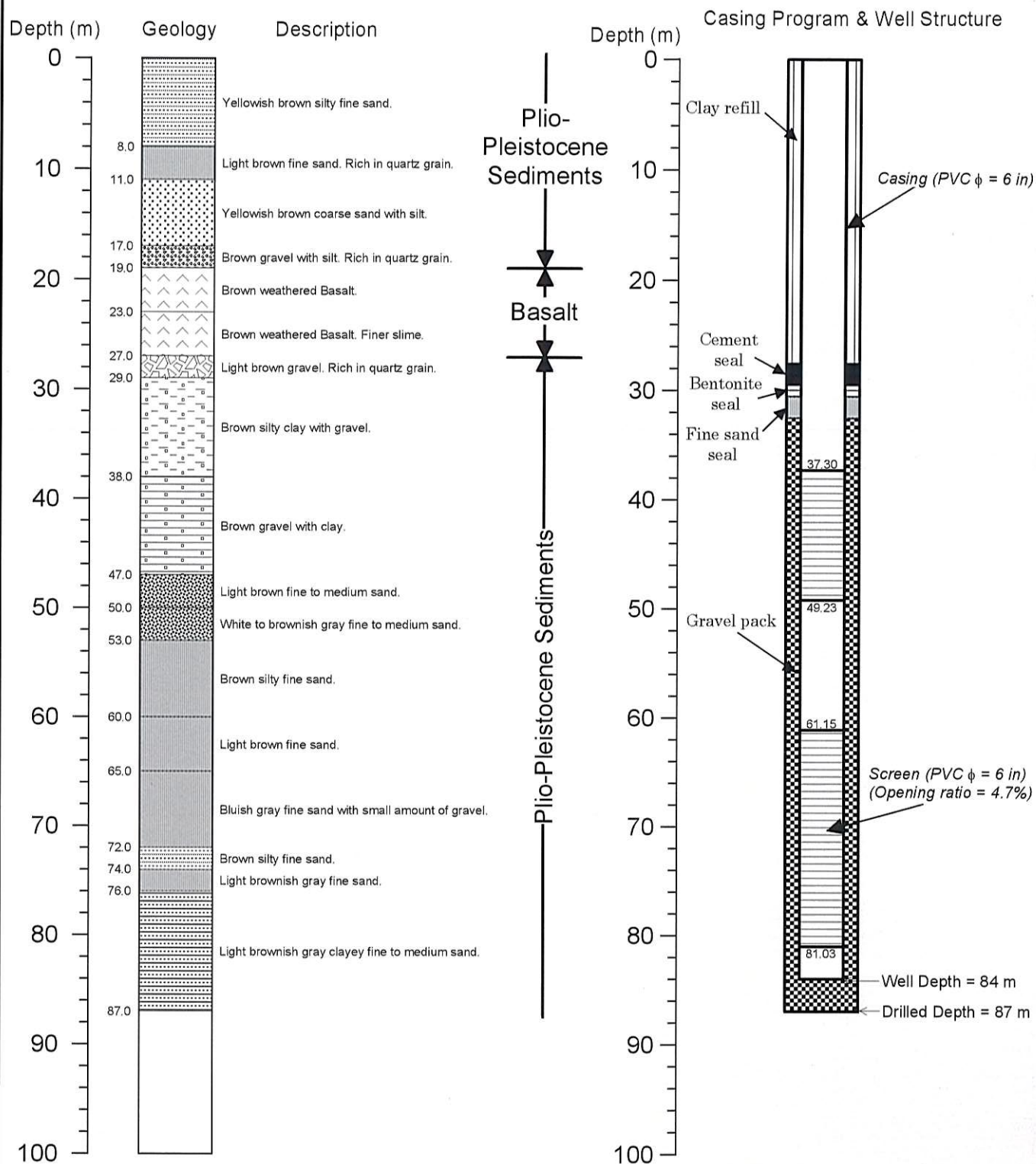
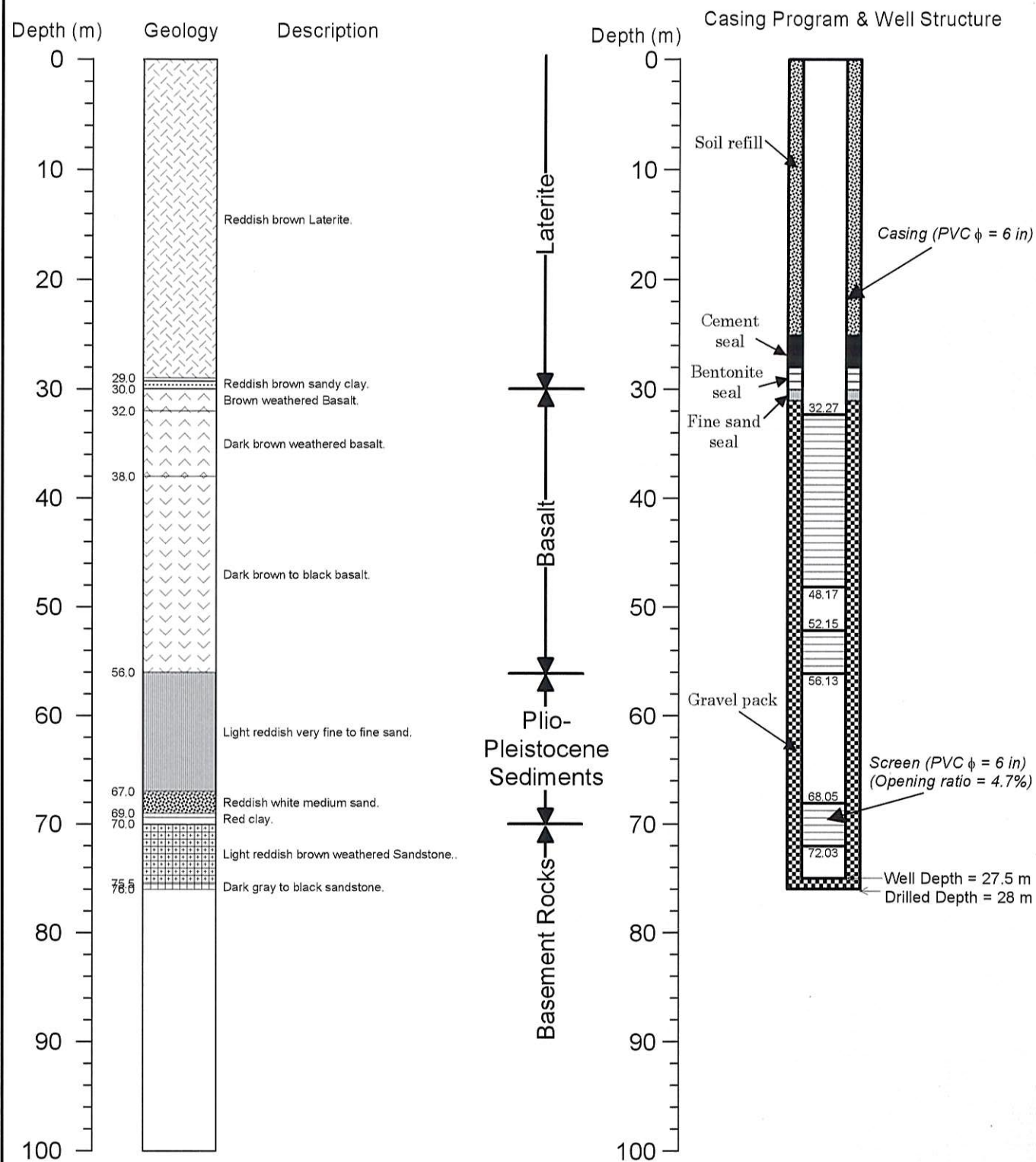


Figure 4.3

Columnar Section and Well Structure of No. 22 Test Well (Vil. No. 214M)

THE STUDY ON GROUNDWATER DEVELOPMENT IN CENTRAL CAMBODIA

JAPAN INTERNATIONAL COOPERATION AGENCY (JICA)



WELL LOCATION

Province: Kg. Cham
District: Memot
Commune: Ton Lung
Village: Sia Phnum
Village No.: 055M

Long.-E(deg): 106.3110
Lati.-N(deg): 11.8599
UTM-E(m): 642783
UTM-N(m): 1311401

WELL SPECIFICATION

Drilled Depth: 76.0 m
Well Depth: 75.0 m
Screen Depth(s): 32.28 - 72.03 m
Screen Length: 23.85 m
Ground Elevation: 152 m

LOCATION MAP

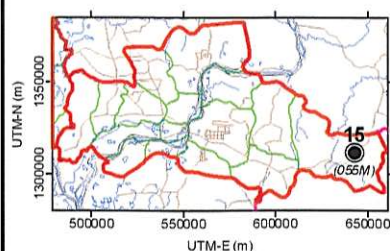
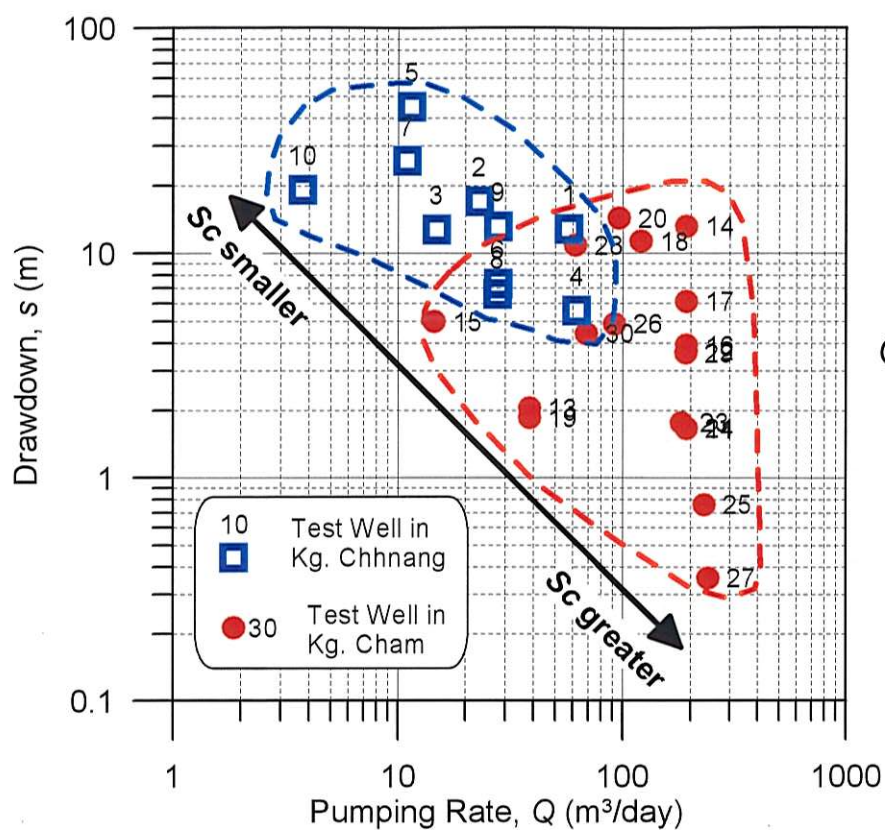


Figure 4.4

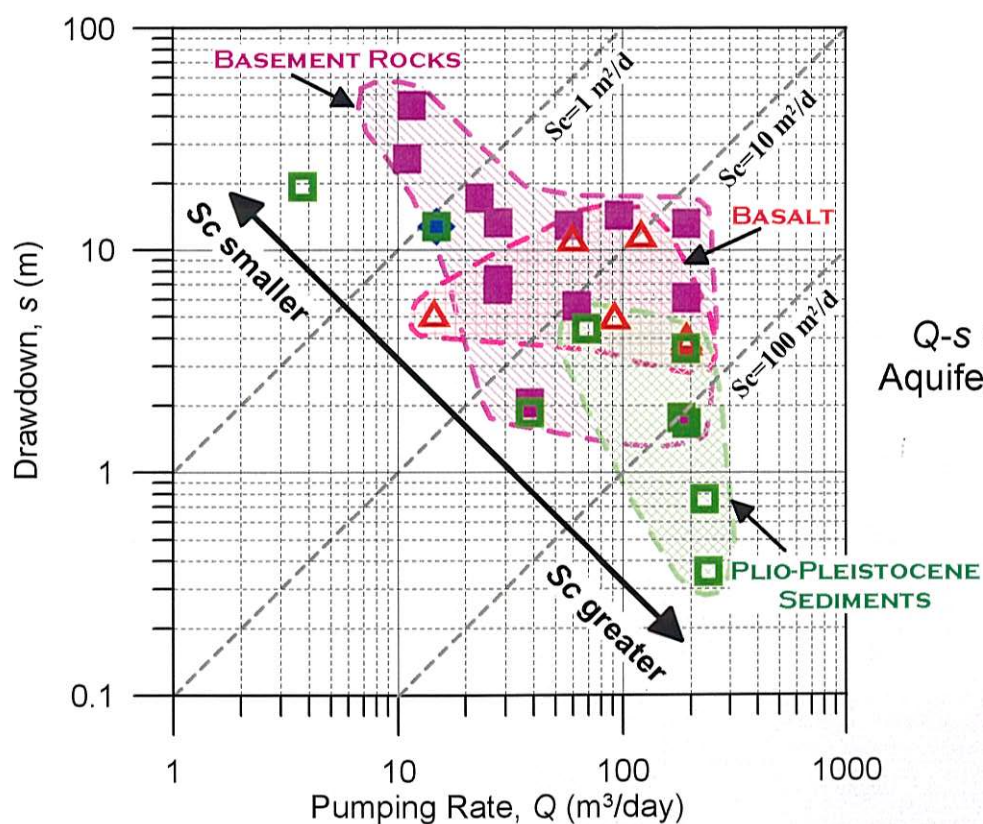
**Columnar Section and Well Structure of
No. 15 Test Well (Vil. No. 055M)**

**THE STUDY ON GROUNDWATER DEVELOPMENT
IN CENTRAL CAMBODIA**

JAPAN INTERNATIONAL COOPERATION AGENCY (JICA)



Q-s Plots by Province



Q-s Plots by Aquifer Geology

Sc : Specific Capacity
($= Q / s$)

Figure 4.5

Q-s Plots of Test Wells by Province and Aquifer Geology

THE STUDY ON GROUNDWATER DEVELOPMENT
IN CENTRAL CAMBODIA

JAPAN INTERNATIONAL COOPERATION AGENCY (JICA)