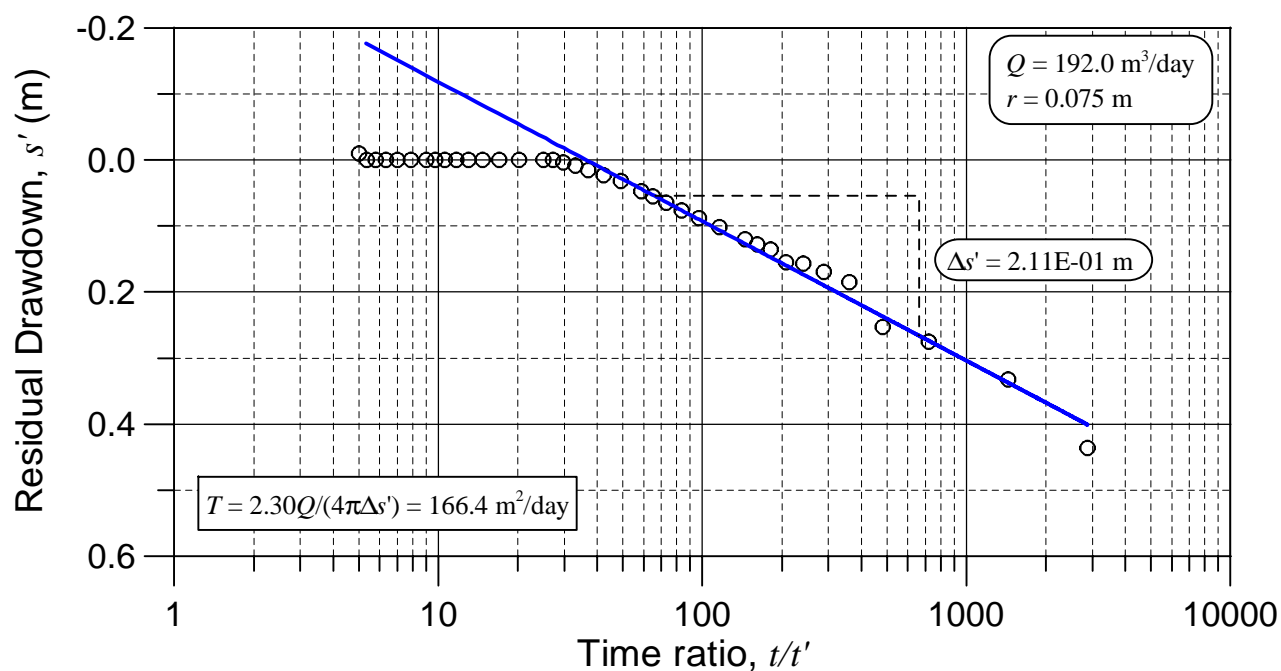
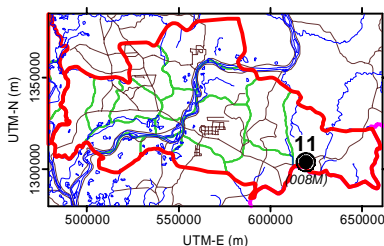


**(a) Continuous Pumping Test**



**(b) Recovery Test**

**LOCATION MAP**



**WELL LOCATION**

Province: Kg. Cham  
District: Memot  
Commune: Dar  
Village: Dar Lech  
Village No.: 008M

Long.-E(deg): 106.0944  
Lati.-N(deg): 11.7930  
UTM-E(m): 619242  
UTM-N(m): 1303905

**WELL SPECIFICATION**

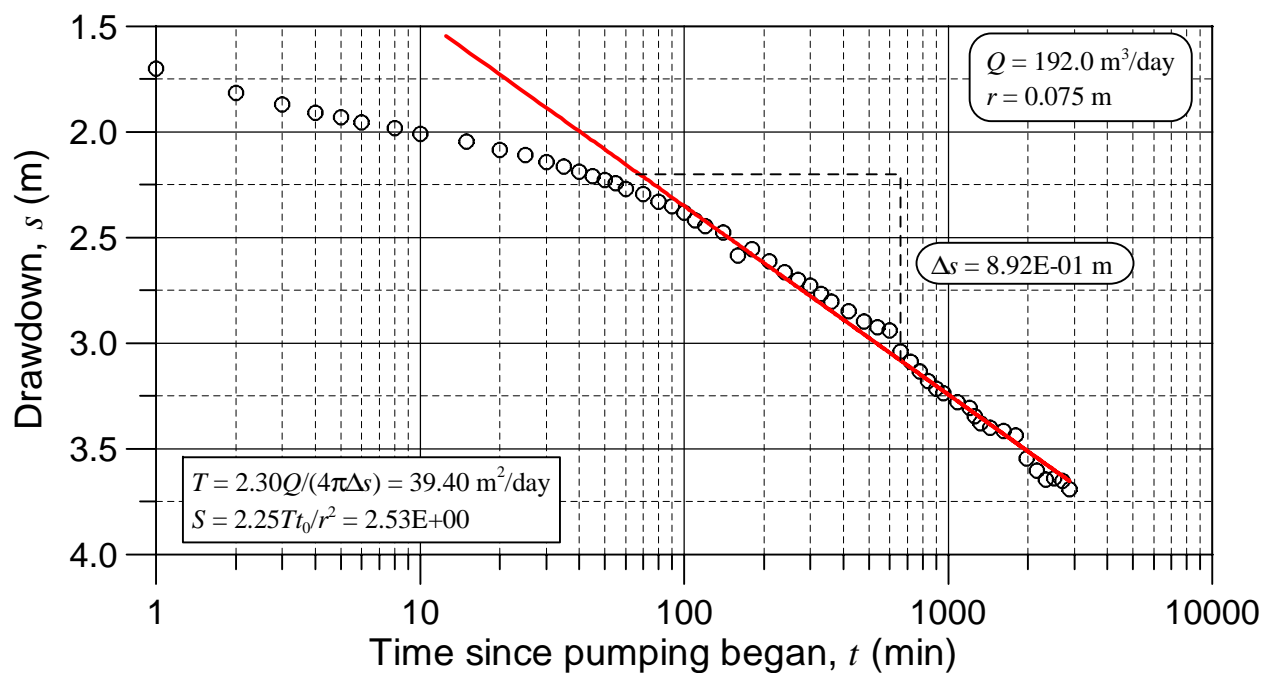
Drilled Depth: 38.0 m  
Well Depth: 37.0 m  
Screen Depth(s): 20.16 - 36.00 m  
Screen Length: 15.84 m  
Static WL: 11.510 m

**Figure 4.2.4.41**

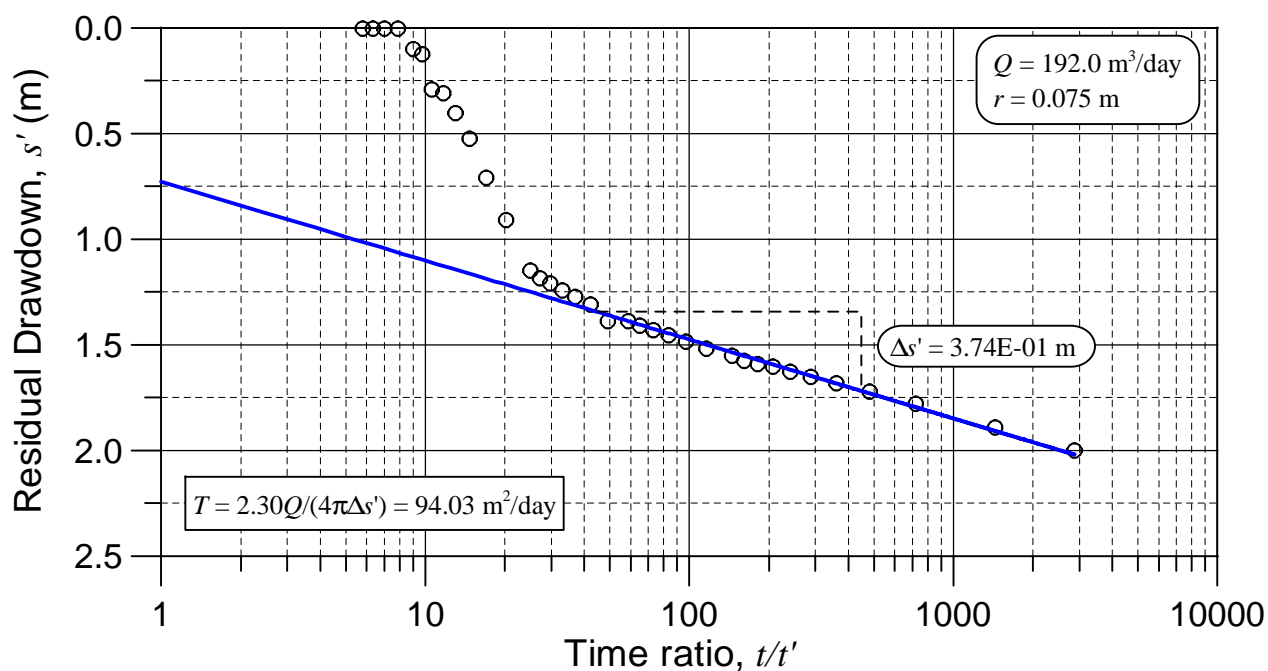
**Results of Continuous Pumping Test  
and Recovery Test at No.11 Test Well**

**THE STUDY ON GROUNDWATER DEVELOPMENT  
IN CENTRAL CAMBODIA**

JAPAN INTERNATIONAL COOPERATION AGENCY (JICA)

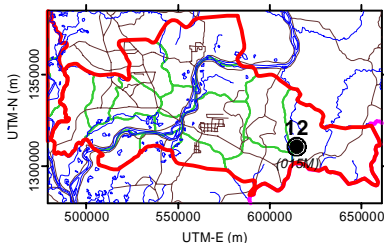


**(a) Continuous Pumping Test**



**(b) Recovery Test**

**LOCATION MAP**



**WELL LOCATION**

Province: Kg. Cham  
District: Memot  
Commune: Dar  
Village: Meaek Puk  
Village No.: 015M

Long.-E(deg): 106.0530  
Lati.-N(deg): 11.8540  
UTM-E(m): 614702  
UTM-N(m): 1310634

**WELL SPECIFICATION**

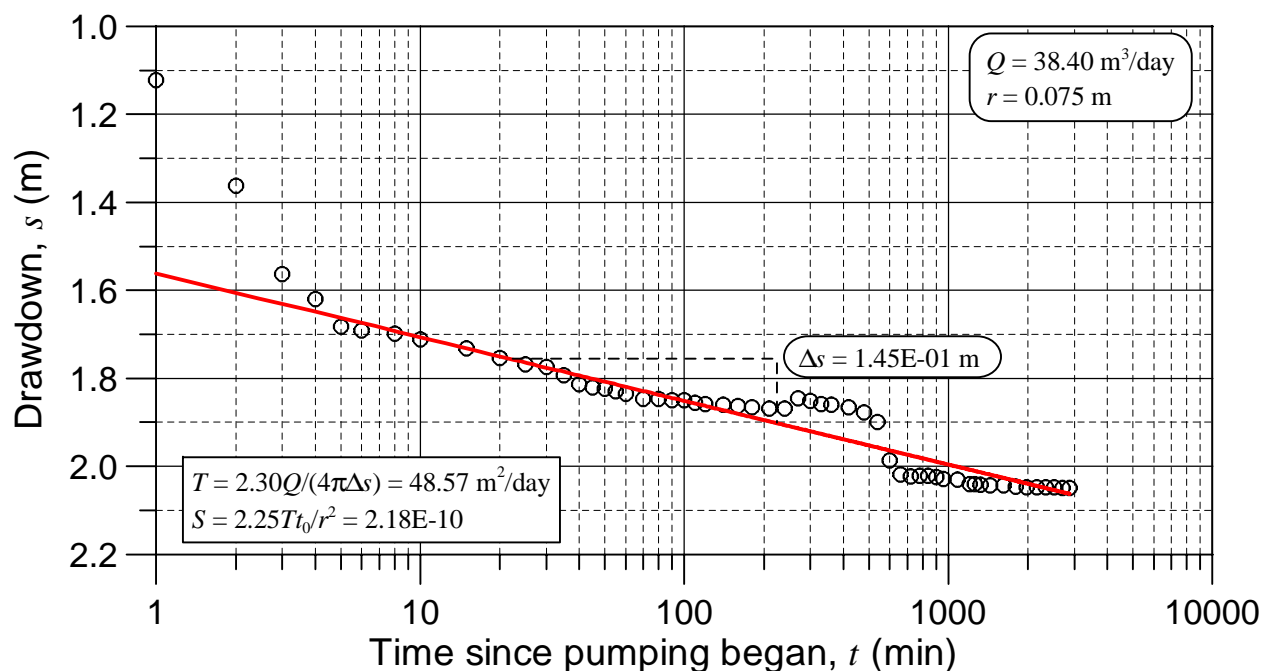
Drilled Depth: 26.0 m  
Well Depth: 25.5 m  
Screen Depth(s): 17.25 - 25.20 m  
Screen Length: 7.95 m  
Static WL: 9.100 m

**Figure 4.2.4.42**

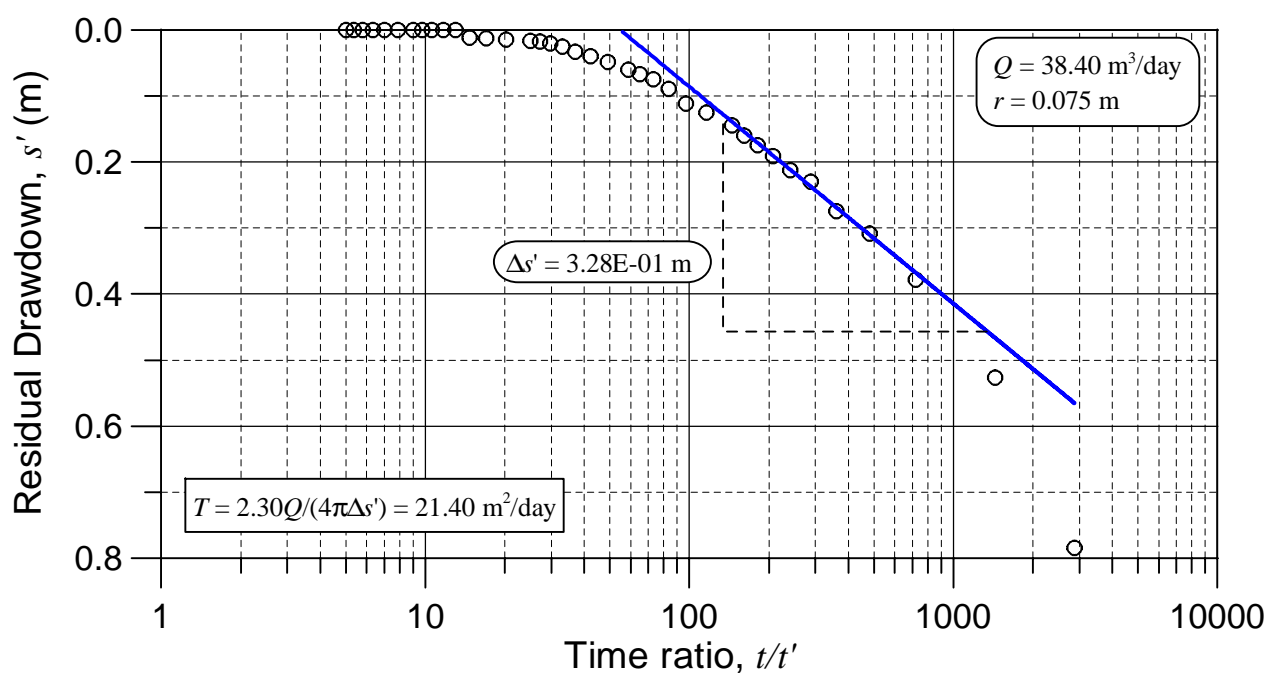
**Results of Continuous Pumping Test  
and Recovery Test at No.12 Test Well**

**THE STUDY ON GROUNDWATER DEVELOPMENT  
IN CENTRAL CAMBODIA**

JAPAN INTERNATIONAL COOPERATION AGENCY (JICA)

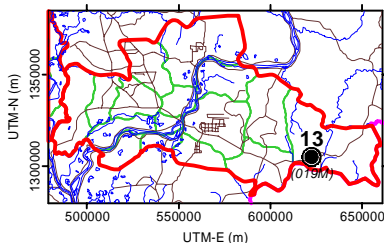


**(a) Continuous Pumping Test**



**(b) Recovery Test**

**LOCATION MAP**



**WELL LOCATION**

Province: Kg. Cham  
District: Memot  
Commune: Dar  
Village: Somrong Chheung  
Village No.: 019M

Long.-E(deg): 106.1225  
Lati.-N(deg): 11.8070  
UTM-E(m): 622288  
UTM-N(m): 1305458

**WELL SPECIFICATION**

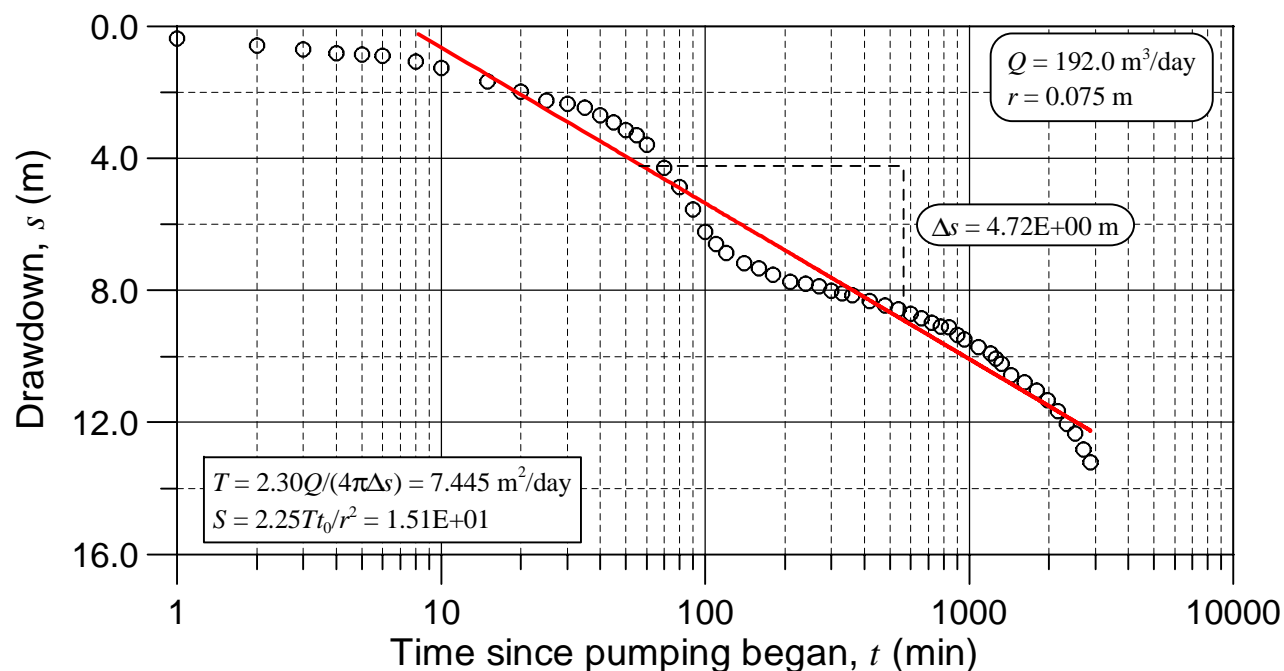
Drilled Depth: 29.0 m  
Well Depth: 27.0 m  
Screen Depth(s): 18.50 - 25.50 m  
Screen Length: 7.00 m  
Static WL: 4.260 m

**Figure 4.2.4.43**

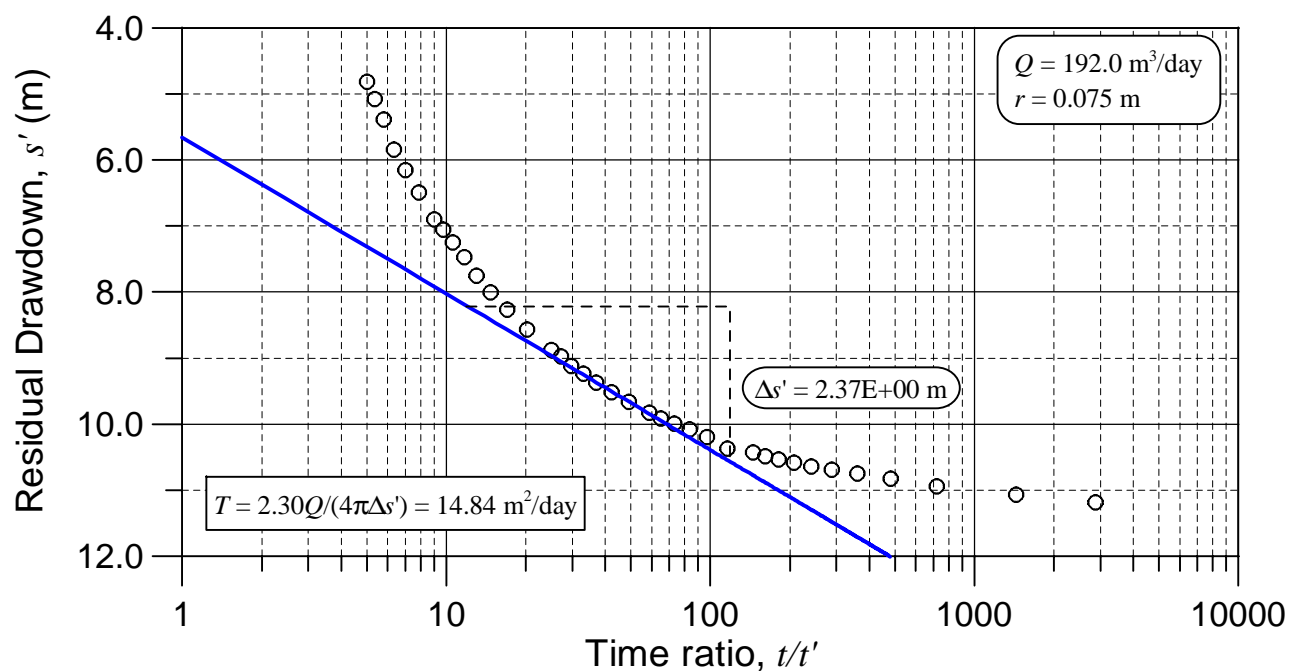
**Results of Continuous Pumping Test  
and Recovery Test at No.13 Test Well**

**THE STUDY ON GROUNDWATER DEVELOPMENT  
IN CENTRAL CAMBODIA**

JAPAN INTERNATIONAL COOPERATION AGENCY (JICA)

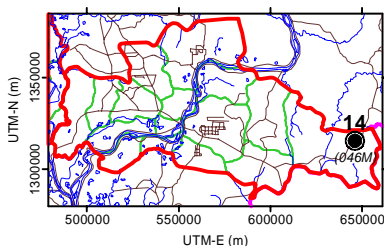


**(a) Continuous Pumping Test**



**(b) Recovery Test**

**LOCATION MAP**



**WELL LOCATION**

Province: Kg. Cham  
District: Memot  
Commune: Ton Lung  
Village: Kdol Phsar  
Village No.: 046M

Long.-E(deg): 106.3400  
Lati.-N(deg): 11.8977  
UTM-E(m): 645953  
UTM-N(m): 1315592

**WELL SPECIFICATION**

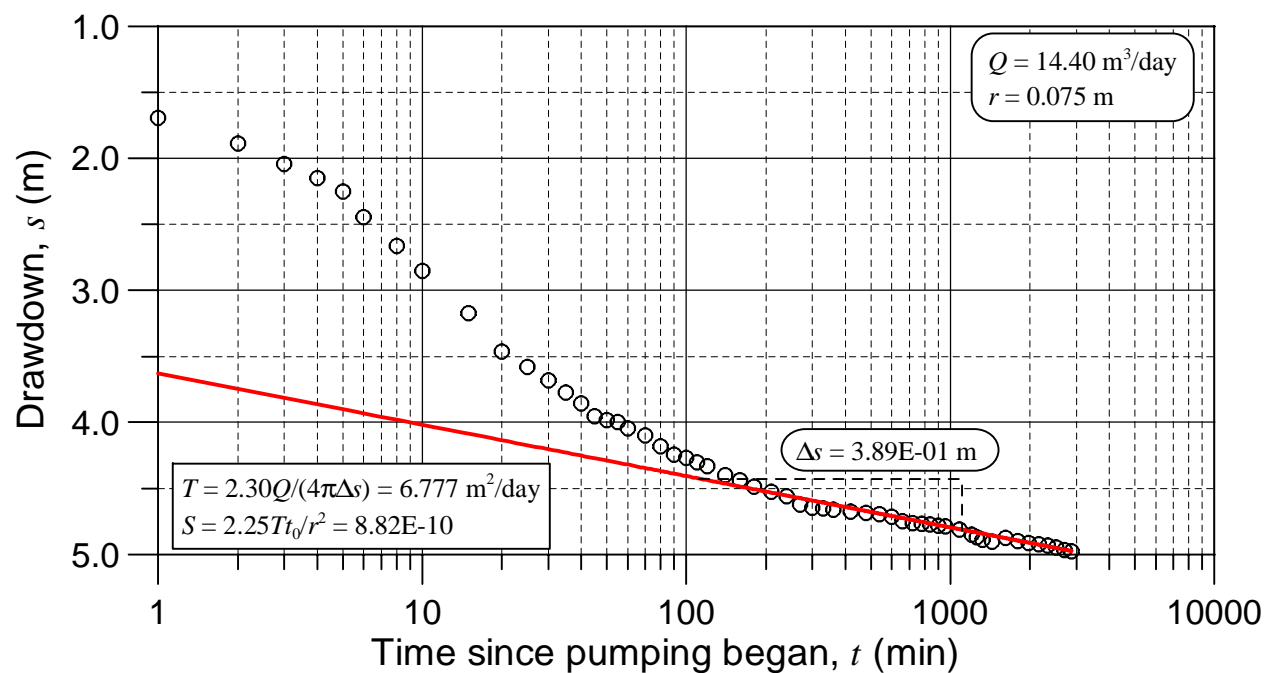
Drilled Depth: 28.0 m  
Well Depth: 27.5 m  
Screen Depth(s): 5.70 - 25.50 m  
Screen Length: 15.84 m  
Static WL: 0.650 m

**Figure 4.2.4.44**

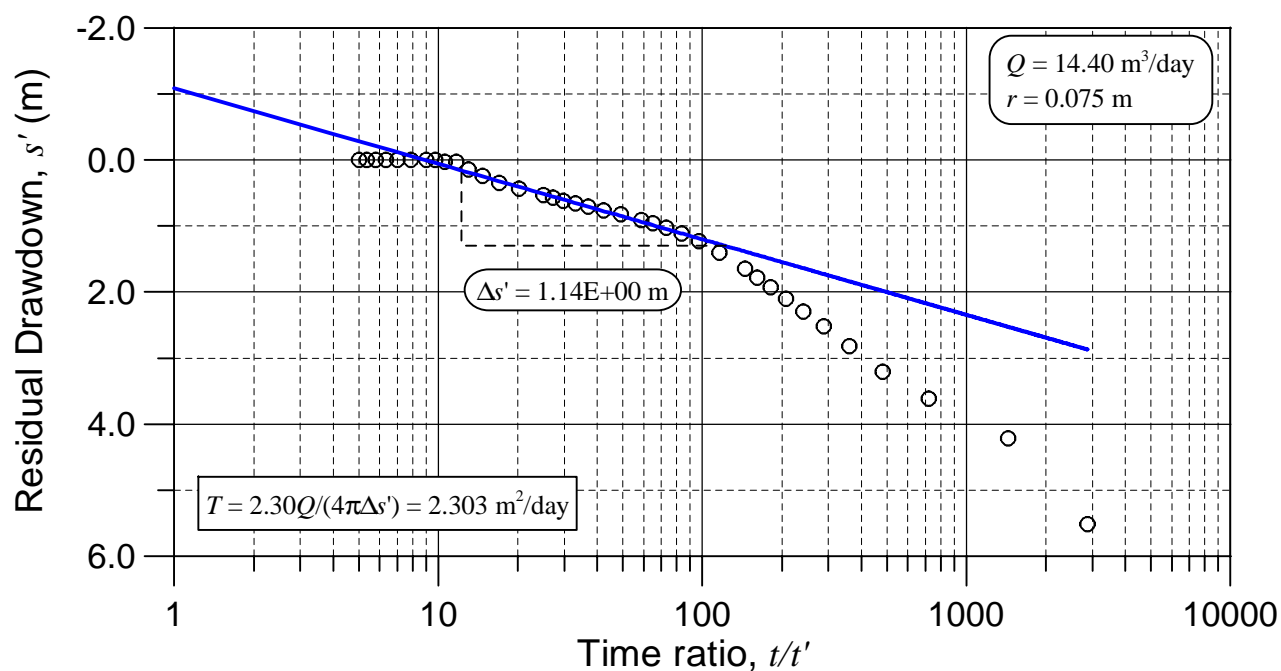
**Results of Continuous Pumping Test  
and Recovery Test at No.14 Test Well**

**THE STUDY ON GROUNDWATER DEVELOPMENT  
IN CENTRAL CAMBODIA**

JAPAN INTERNATIONAL COOPERATION AGENCY (JICA)

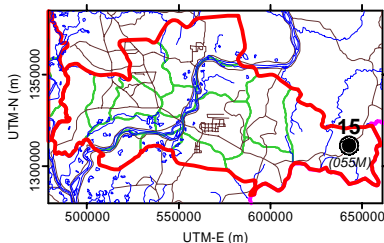


**(a) Continuous Pumping Test**



**(b) Recovery Test**

**LOCATION MAP**



**WELL LOCATION**

Province: Kg. Cham  
District: Memot  
Commune: Ton Lung  
Village: Sla Phnum  
Village No.: 055M

Long.-E(deg): 106.3110  
Lati.-N(deg): 11.8599  
UTM-E(m): 642783  
UTM-N(m): 1311401

**WELL SPECIFICATION**

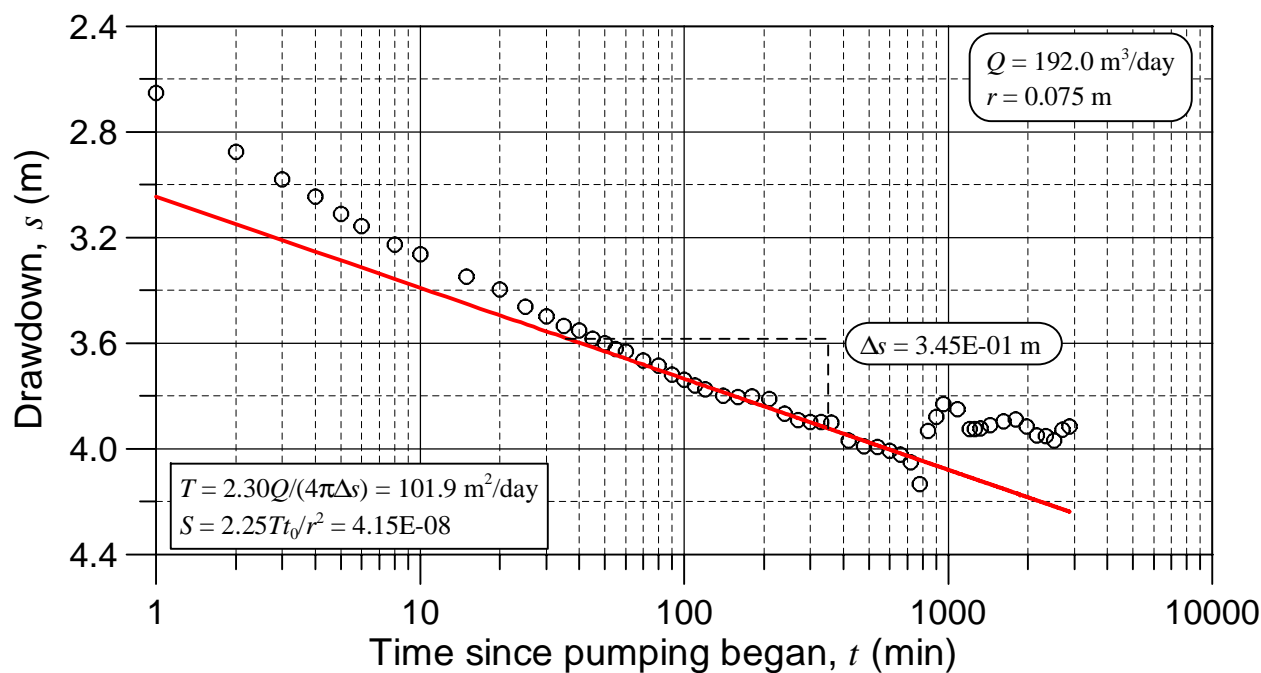
Drilled Depth: 76.0 m  
Well Depth: 75.0 m  
Screen Depth(s): 32.28 - 72.03 m  
Screen Length: 23.85 m  
Static WL: 28.353 m

**Figure 4.2.4.45**

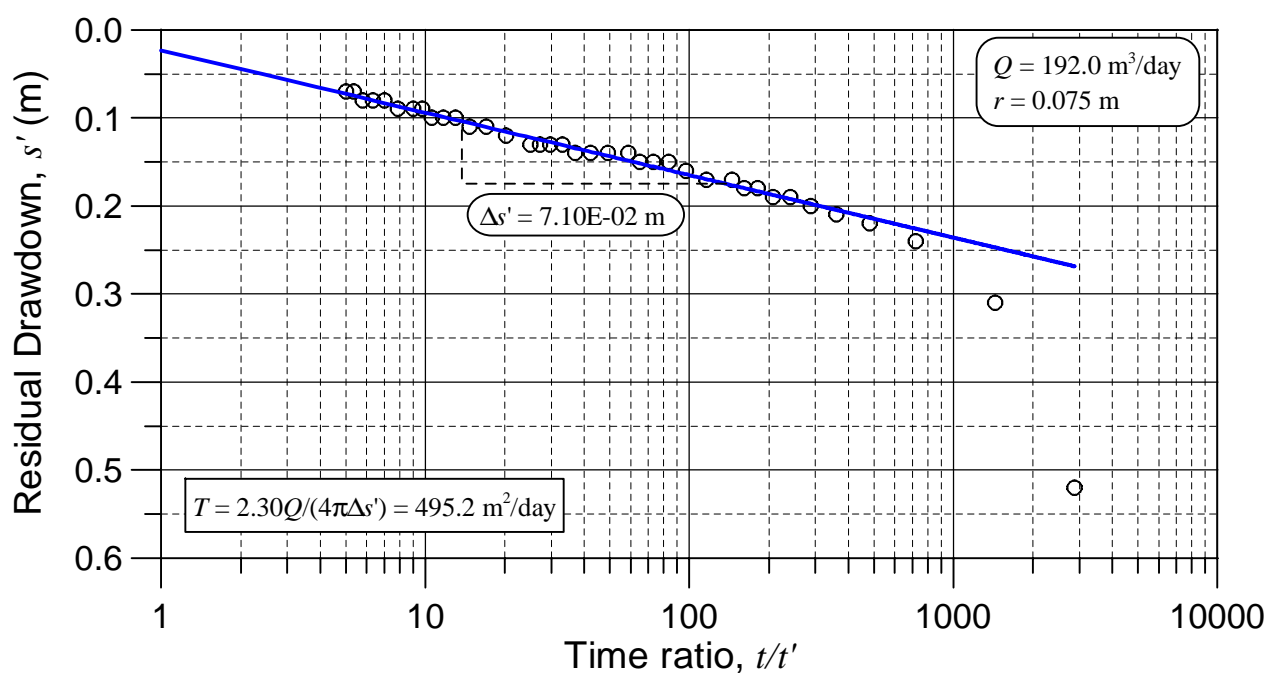
**Results of Continuous Pumping Test  
and Recovery Test at No.15 Test Well**

**THE STUDY ON GROUNDWATER DEVELOPMENT  
IN CENTRAL CAMBODIA**

JAPAN INTERNATIONAL COOPERATION AGENCY (JICA)

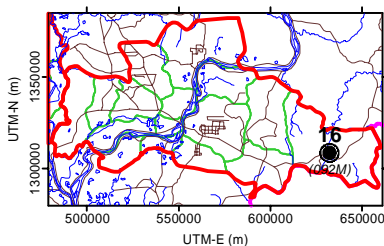


**(a) Continuous Pumping Test**



**(b) Recovery Test**

**LOCATION MAP**



**WELL LOCATION**

Province: Kg. Cham  
District: Memot  
Commune: Tramung  
Village: Chhuk  
Village No.: 092M

Long.-E(deg): 106.2130  
Lati.-N(deg): 11.8355  
UTM-E(m): 632132  
UTM-N(m): 1308645

**WELL SPECIFICATION**

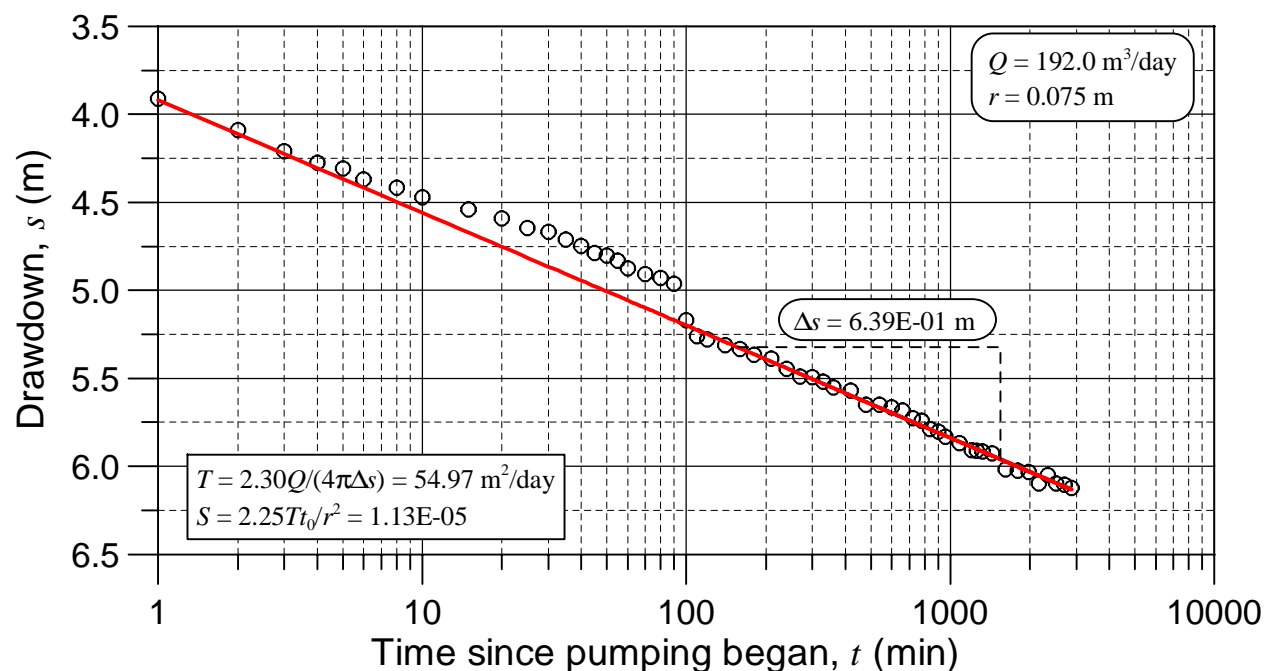
Drilled Depth: 32.0 m  
Well Depth: 25.0 m  
Screen Depth(s): 15.04 - 22.00 m  
Screen Length: 6.96 m  
Static WL: 5.260 m

**Figure 4.2.4.46**

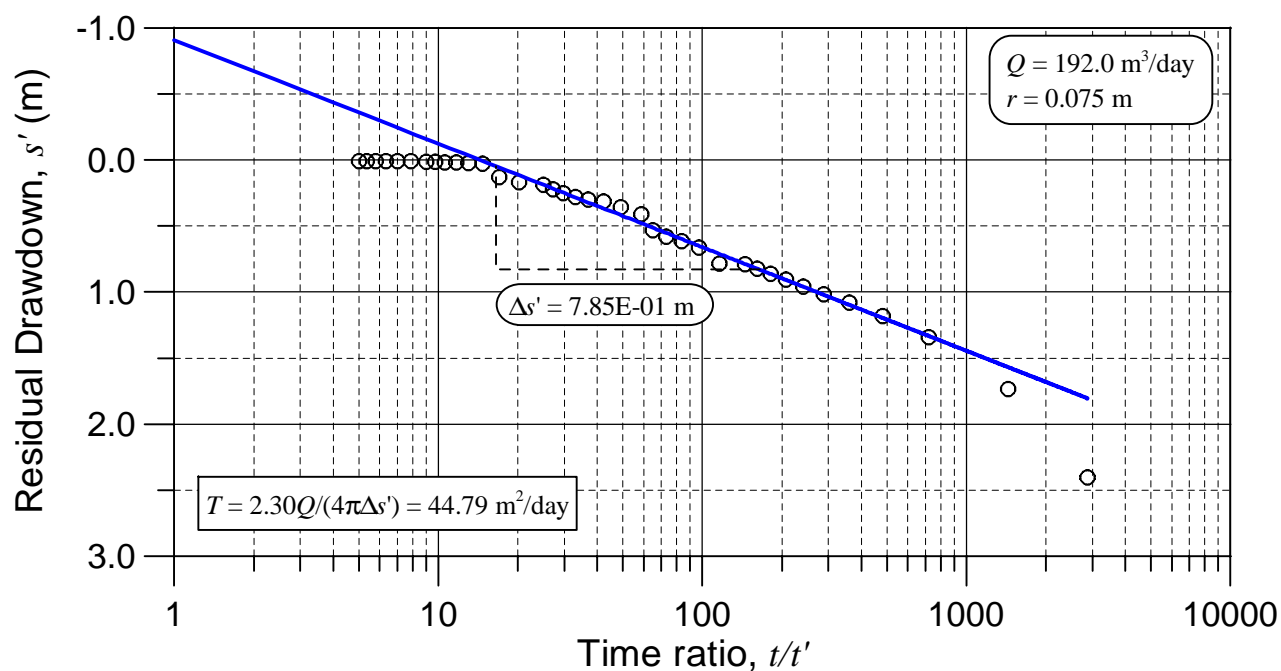
**Results of Continuous Pumping Test  
and Recovery Test at No.16 Test Well**

**THE STUDY ON GROUNDWATER DEVELOPMENT  
IN CENTRAL CAMBODIA**

JAPAN INTERNATIONAL COOPERATION AGENCY (JICA)

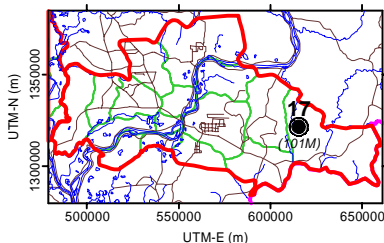


**(a) Continuous Pumping Test**



**(b) Recovery Test**

**LOCATION MAP**



**WELL LOCATION**

Province: Kg. Cham  
District: Memot  
Commune: Kampoan  
Village: Lour  
Village No.: 101M

Long.-E(deg): 106.0598  
Lati.-N(deg): 11.9531  
UTM-E(m): 615401  
UTM-N(m): 1321585

**WELL SPECIFICATION**

Drilled Depth: 40.3 m  
Well Depth: 40.3 m  
Screen Depth(s): 17.50 - 36.34 m  
Screen Length: 15.84 m  
Static WL: 3.000 m

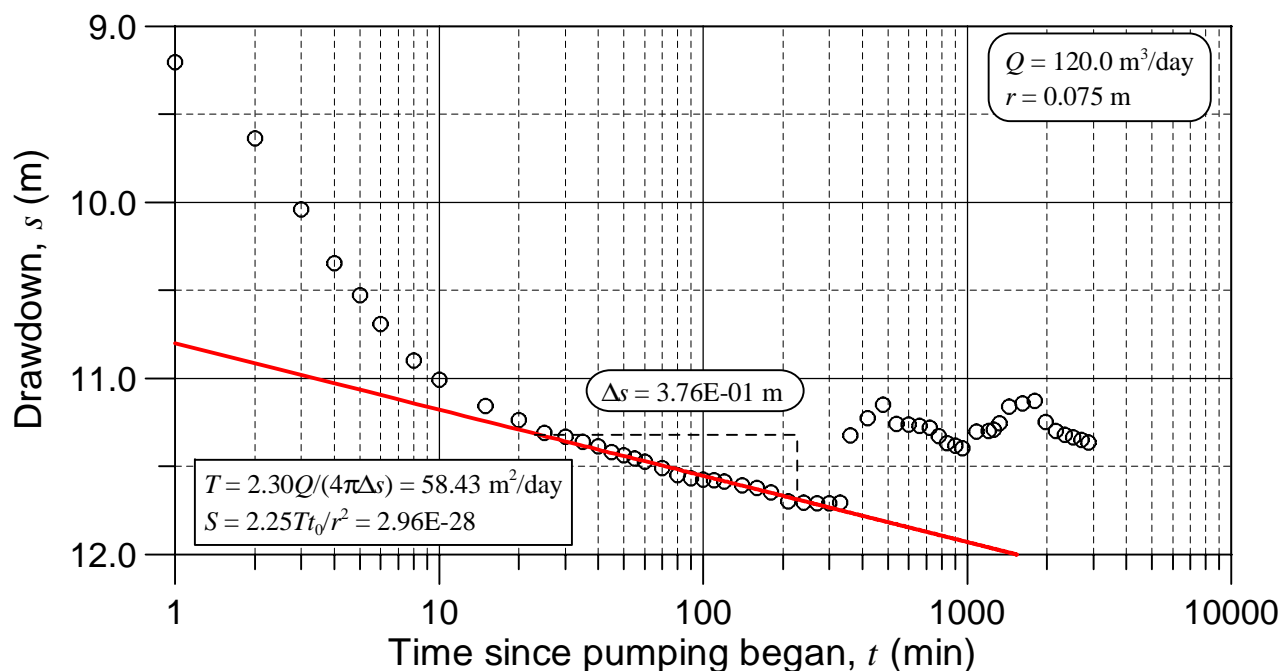
**Figure 4.2.4.47**

**Results of Continuous Pumping Test  
and Recovery Test at No.17 Test Well**

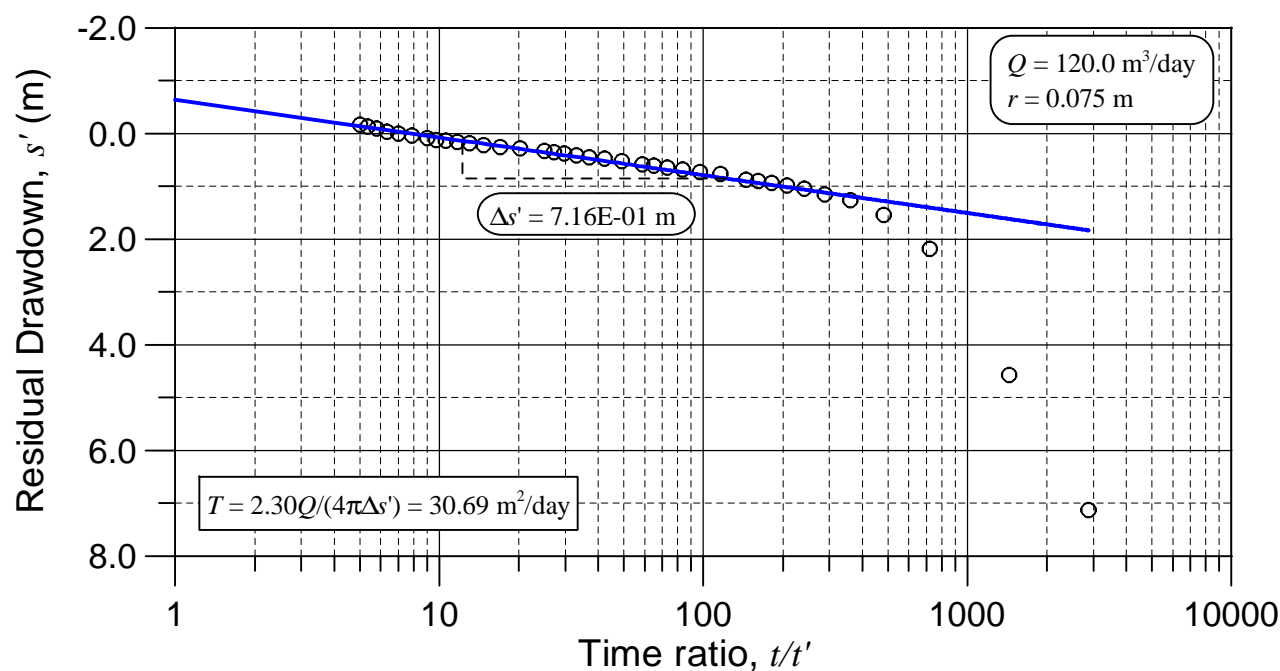
**THE STUDY ON GROUNDWATER DEVELOPMENT  
IN CENTRAL CAMBODIA**

JAPAN INTERNATIONAL COOPERATION AGENCY (JICA)



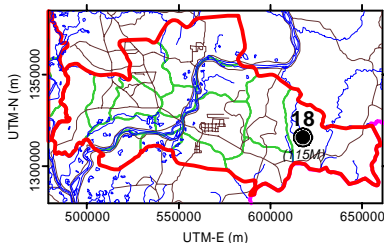


**(a) Continuous Pumping Test**



**(b) Recovery Test**

**LOCATION MAP**



**WELL LOCATION**

Province: Kg. Cham  
District: Memot  
Commune: Kokir  
Village: Kngaok  
Village No.: 115M

Long.-E(deg): 106.0793  
Lati.-N(deg): 11.9011  
UTM-E(m): 617550  
UTM-N(m): 1315851

**WELL SPECIFICATION**

Drilled Depth: 48.0 m  
Well Depth: 47.0 m  
Screen Depth(s): 34.65 - 45.60 m  
Screen Length: 10.95 m  
Static WL: 9.630 m

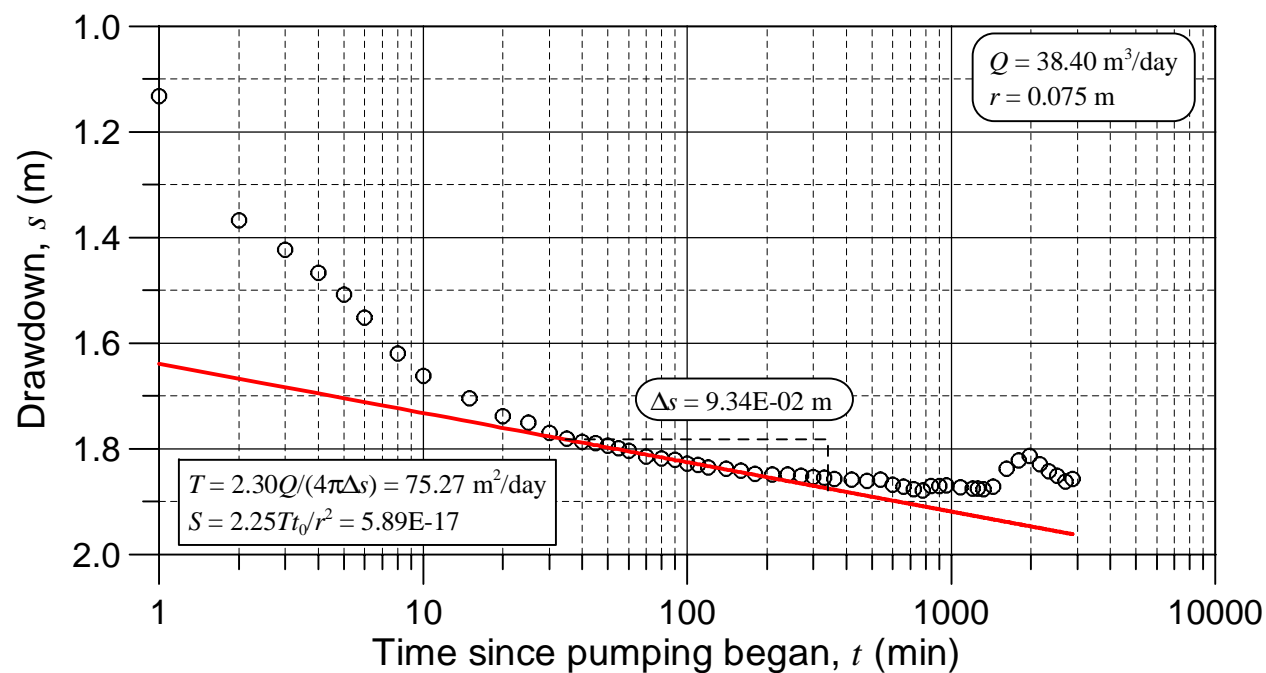
**Figure 4.2.4.48**

**Results of Continuous Pumping Test  
and Recovery Test at No.18 Test Well**

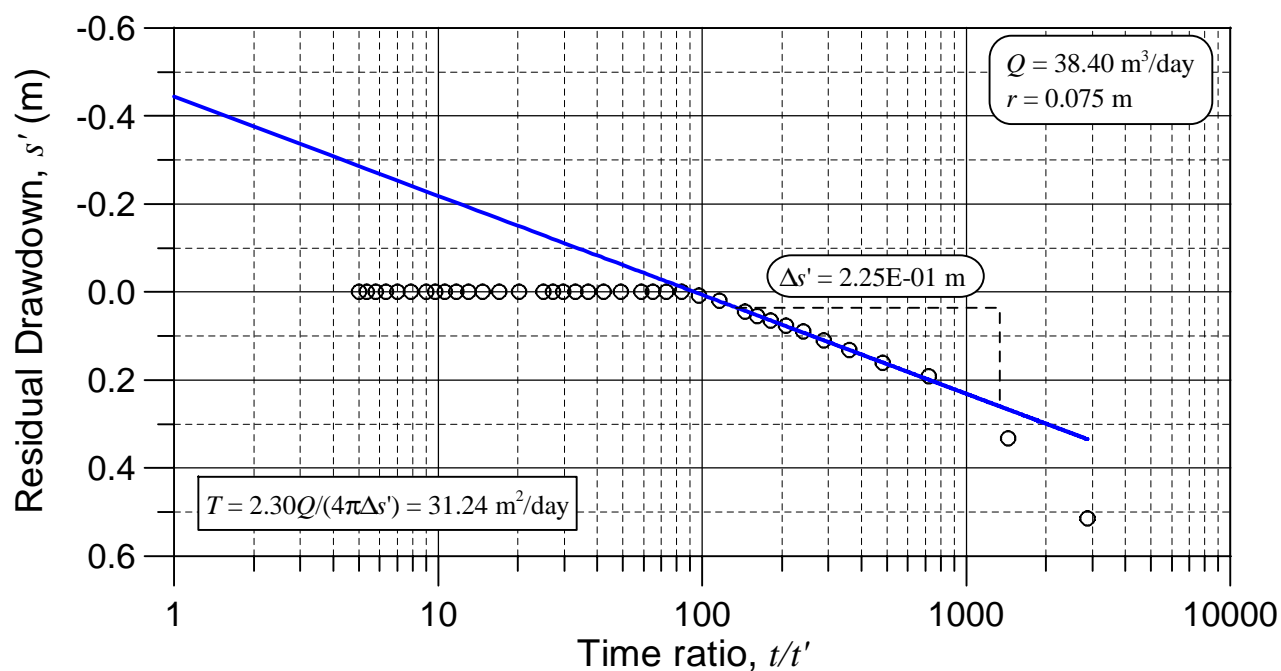
**THE STUDY ON GROUNDWATER DEVELOPMENT  
IN CENTRAL CAMBODIA**

JAPAN INTERNATIONAL COOPERATION AGENCY (JICA)



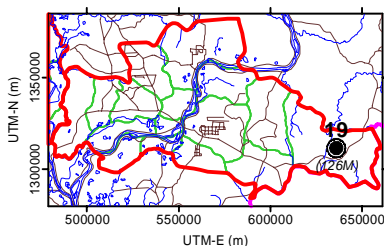


**(a) Continuous Pumping Test**



**(b) Recovery Test**

**LOCATION MAP**



**WELL LOCATION**

Province: Kg. Cham  
District: Memot  
Commune: Choam Ta Mau  
Village: Kantuot  
Village No.: 126M

Long.-E(deg): 106.2453  
Lati.-N(deg): 11.8627  
UTM-E(m): 635648  
UTM-N(m): 1311683

**WELL SPECIFICATION**

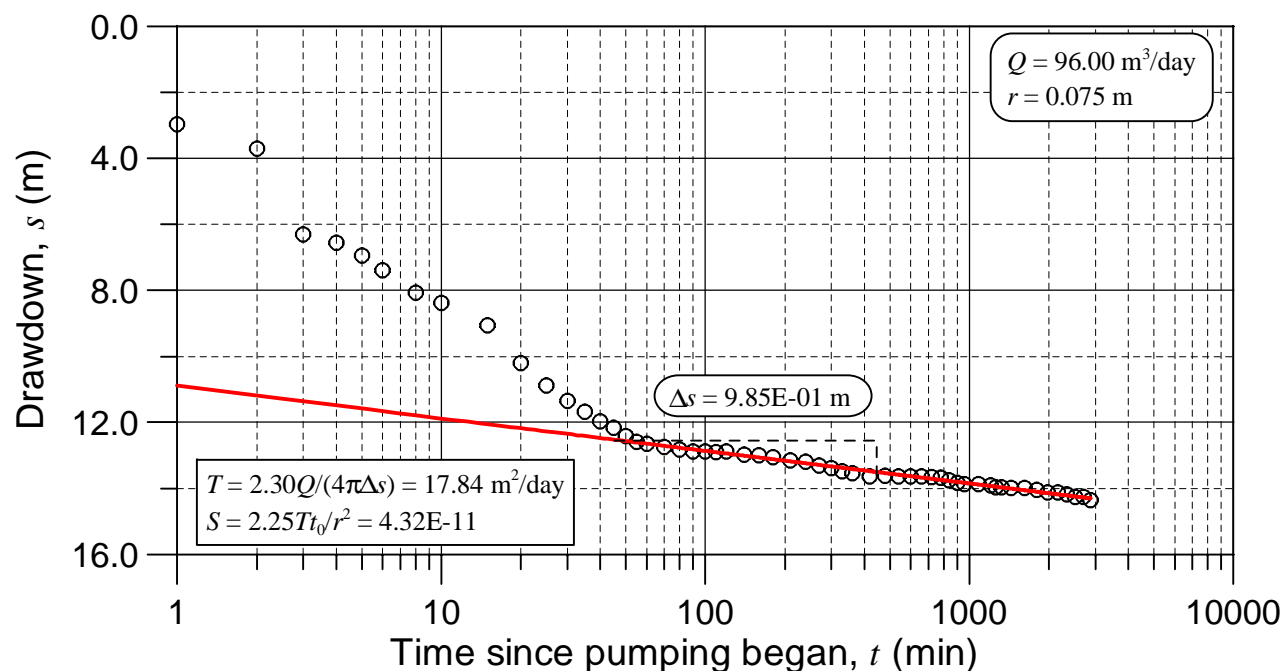
Drilled Depth: 52.0 m  
Well Depth: 27.0 m  
Screen Depth(s): 11.12 - 25.00 m  
Screen Length: 9.92 m  
Static WL: 12.620 m

**Figure 4.2.4.49**

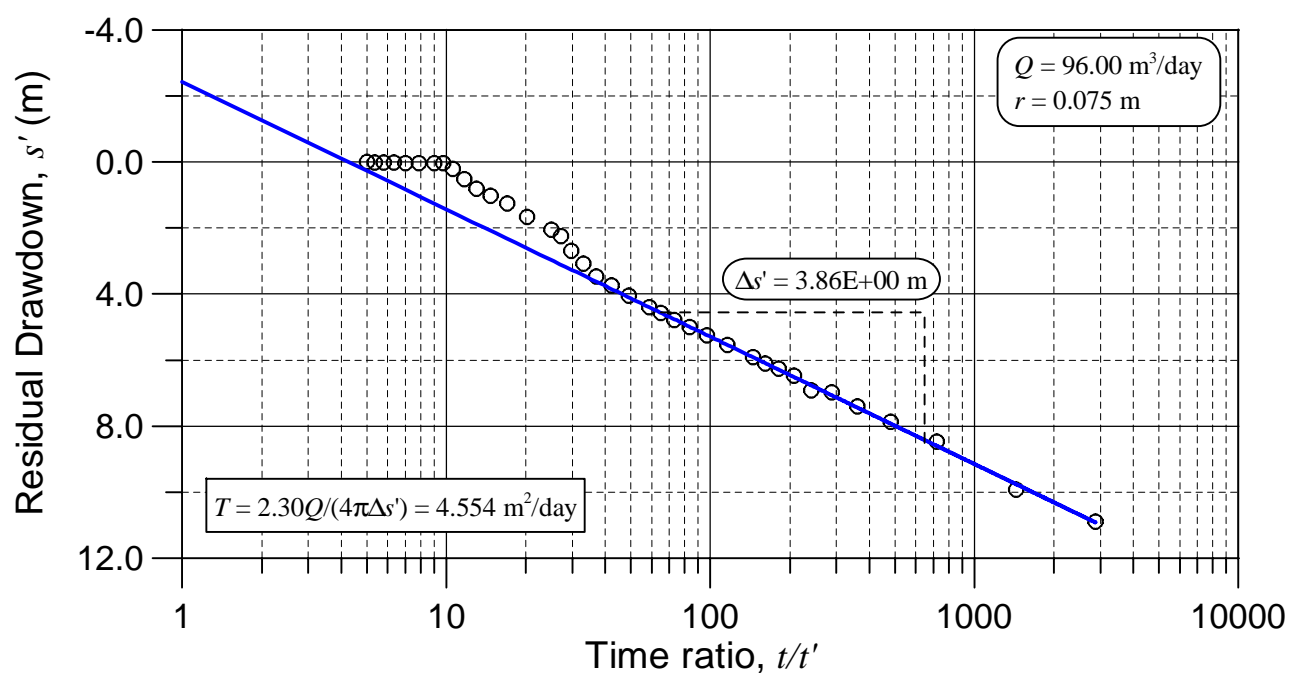
**Results of Continuous Pumping Test  
and Recovery Test at No.19 Test Well**

**THE STUDY ON GROUNDWATER DEVELOPMENT  
IN CENTRAL CAMBODIA**

JAPAN INTERNATIONAL COOPERATION AGENCY (JICA)

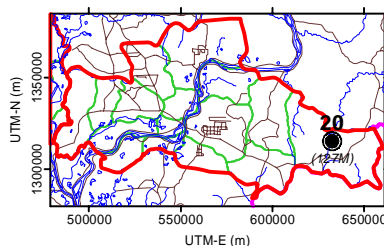


**(a) Continuous Pumping Test**



**(b) Recovery Test**

**LOCATION MAP**



**WELL LOCATION**

Province: Kg. Cham  
District: Memot  
Commune: Choam Ta Mau  
Village: Angkam  
Village No.: 127M

Long.-E(deg): 106.2178  
Lati.-N(deg): 11.8947  
UTM-E(m): 632630  
UTM-N(m): 1315210

**WELL SPECIFICATION**

Drilled Depth: 49.7 m  
Well Depth: 49.0 m  
Screen Depth(s): 21.16 - 45.01 m  
Screen Length: 15.90 m  
Static WL: 6.000 m

**Figure 4.2.4.50**

**Results of Continuous Pumping Test  
and Recovery Test at No.20 Test Well**

**THE STUDY ON GROUNDWATER DEVELOPMENT  
IN CENTRAL CAMBODIA**

JAPAN INTERNATIONAL COOPERATION AGENCY (JICA)