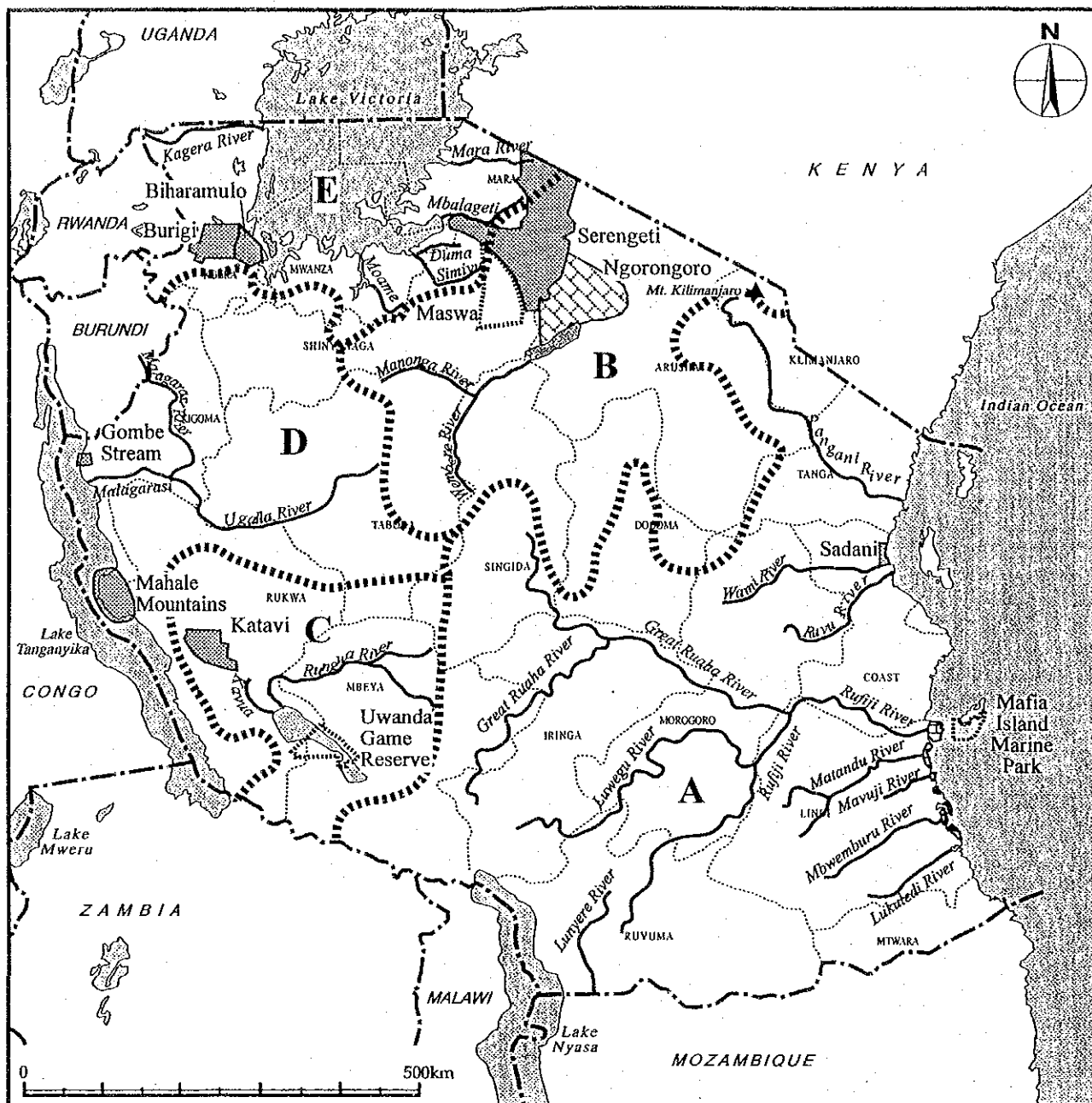


ATTACHMENT FIGURES AND TABLES

Attached Figure 1 Fish Production (1996) and Major Fisheries Facility / Institutions in Tanzania

THE MASTER PLAN STUDY ON FISHERIES DEVELOPMENT
IN THE UNITED REPUBLIC OF TANZANIA



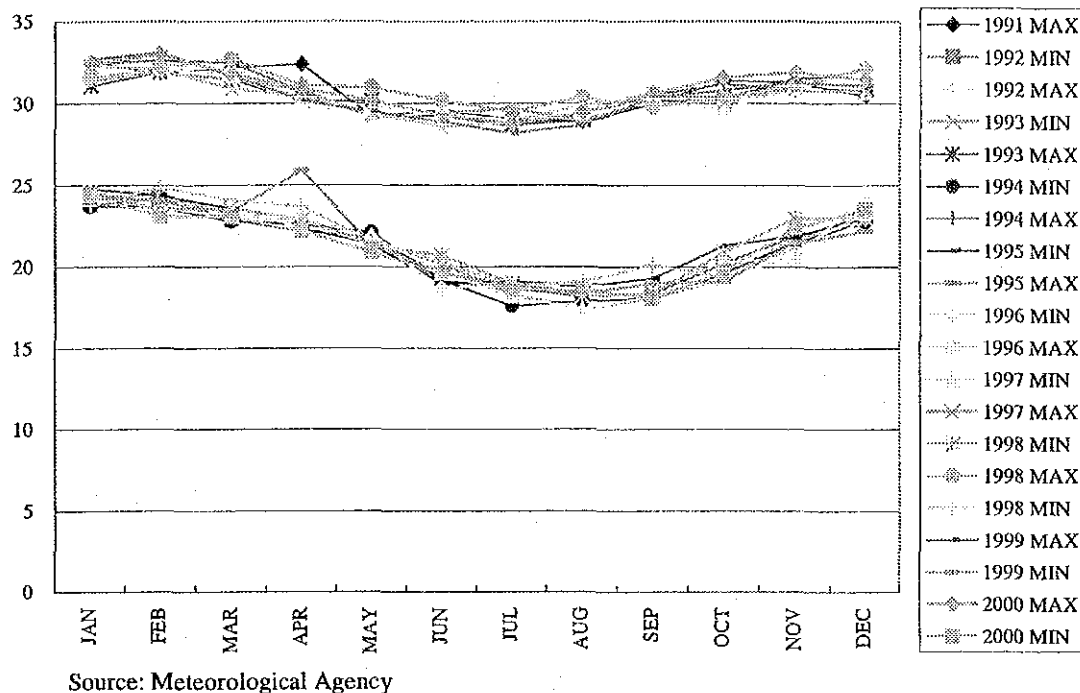
LEGEND

DRAINAGE BASIN

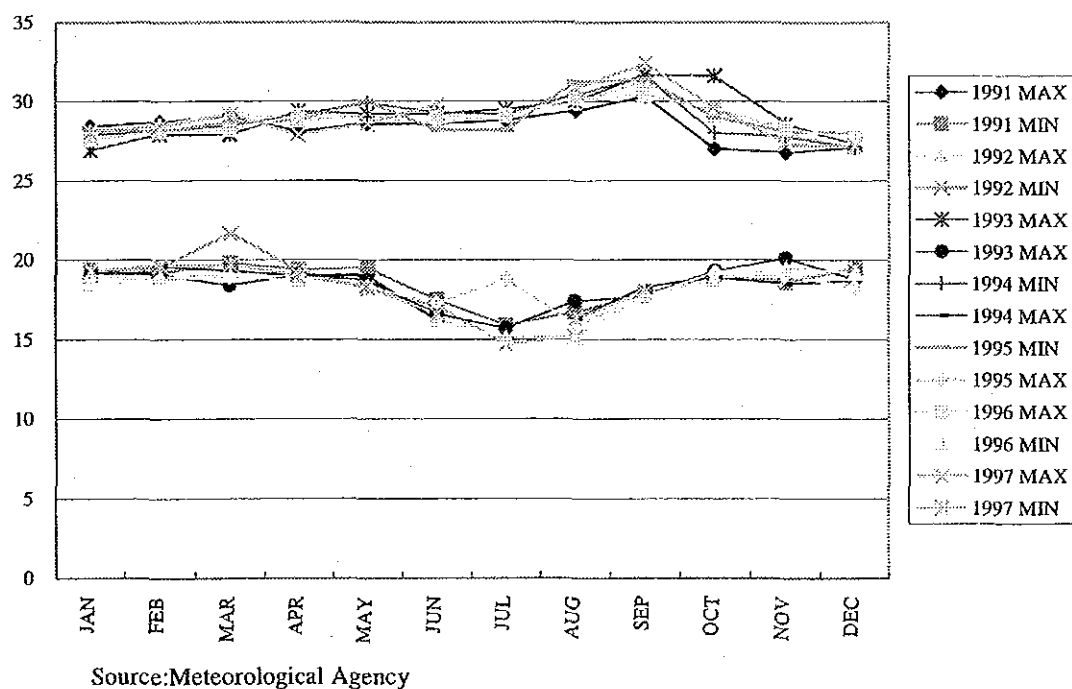
- A Indian Ocean
- B Interior Drainage
- C Lake Rukwa
- D Atlantic Ocean (Lake Tanganyika)
- E Mediterranean Sea (Lake Victoria)

- National Park
- Forest/Mangrove Reserve
- Game Reserve
- Ngorongoro Conservation Areas

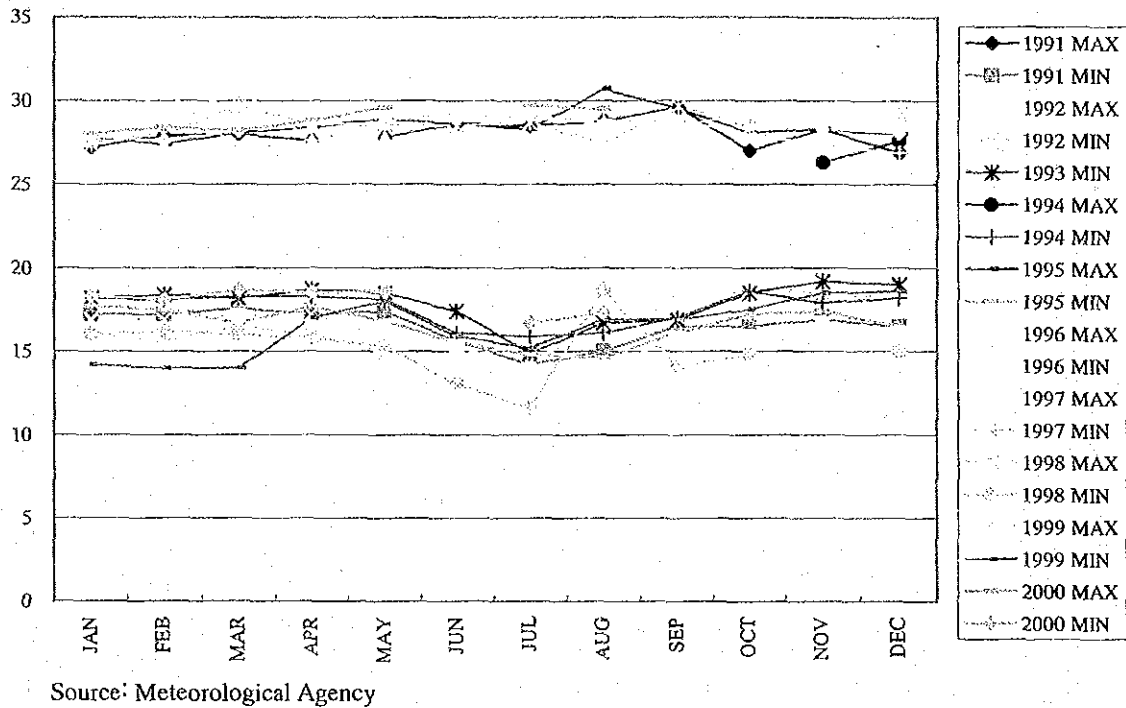
Attached Figure 2 Diagram of Water System in Tanzania



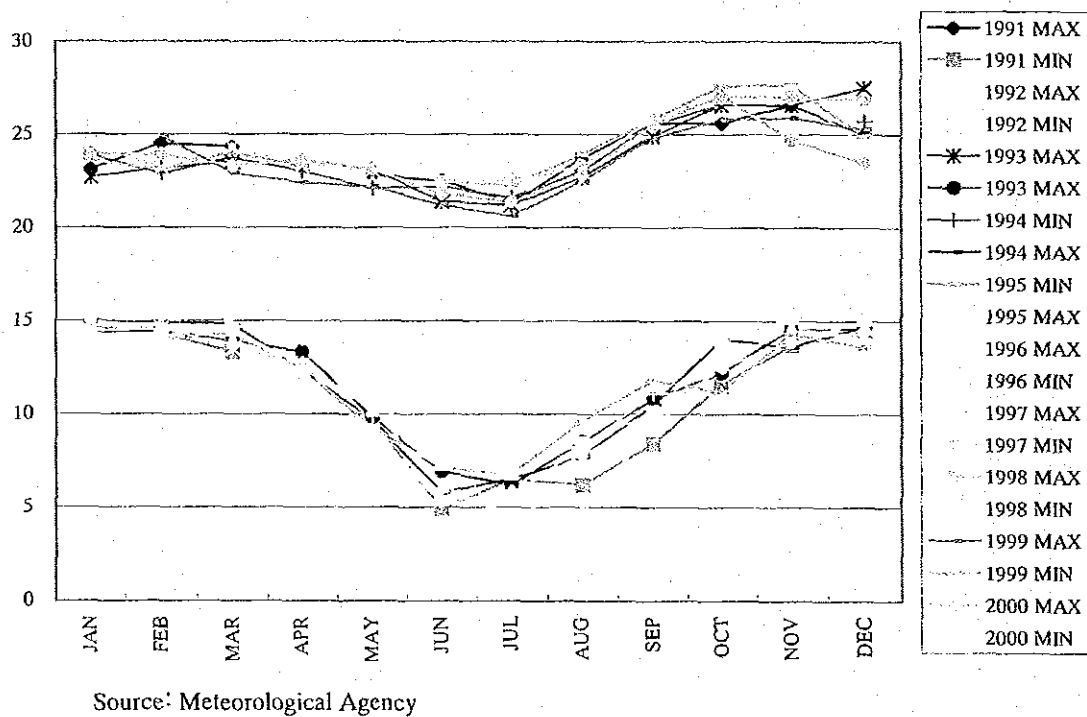
Attached Figure 3 Dar es Salaam Mean Monthly Temperature (Deg C), 1991-2000



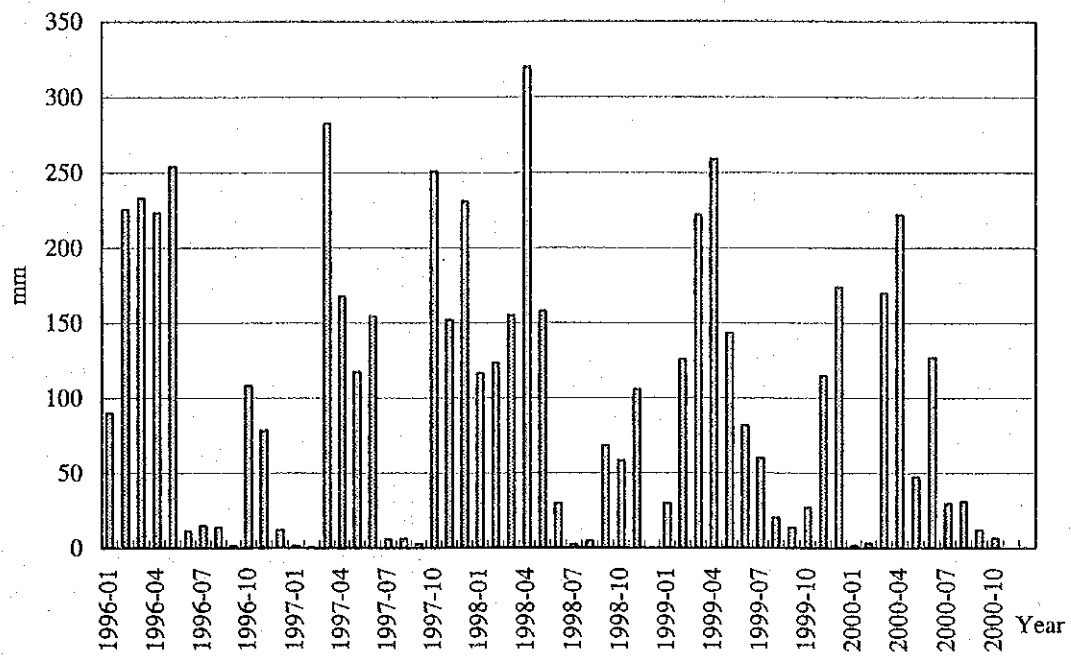
Attached Figure 4 Kigoma Mean Monthly Temperature (Deg C), 1991-1997



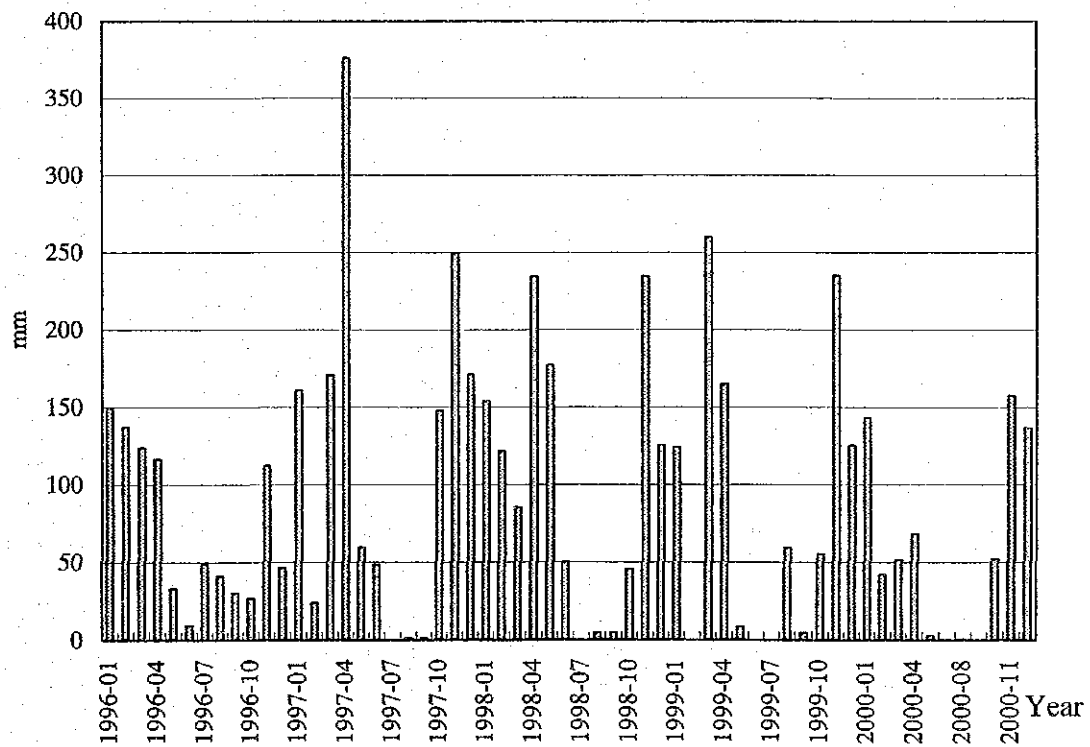
Attached Figure 5 Mwanza Mean Monthly Temperature
(Deg C), 1991-2000



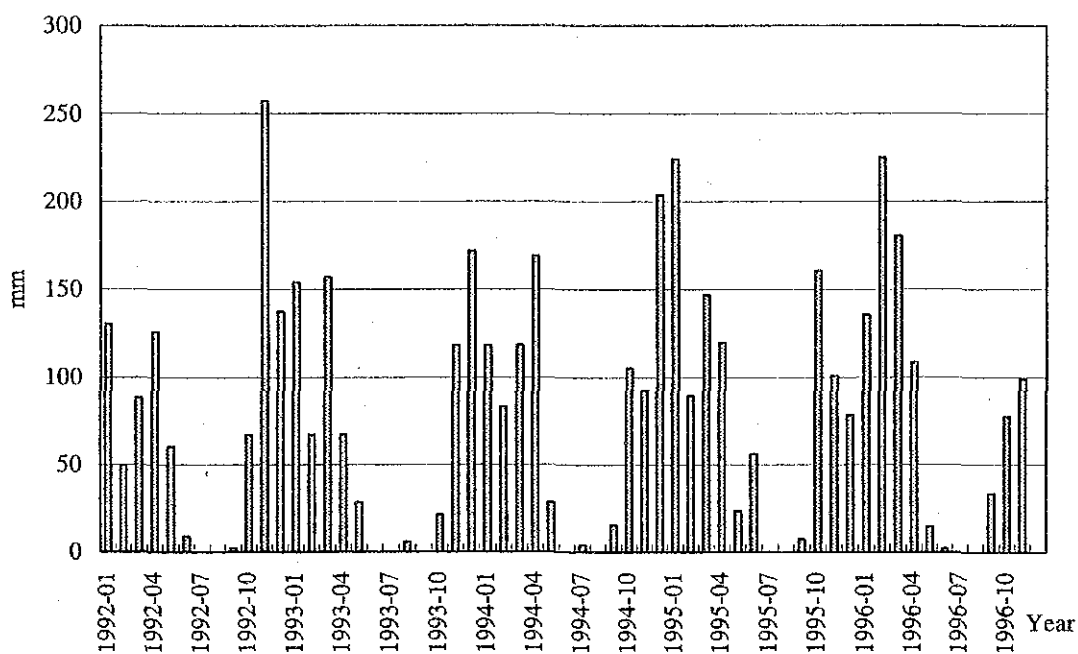
Attached Figure 6 Mbeya Mean Monthly Temperature
(Deg C), 1991-2000



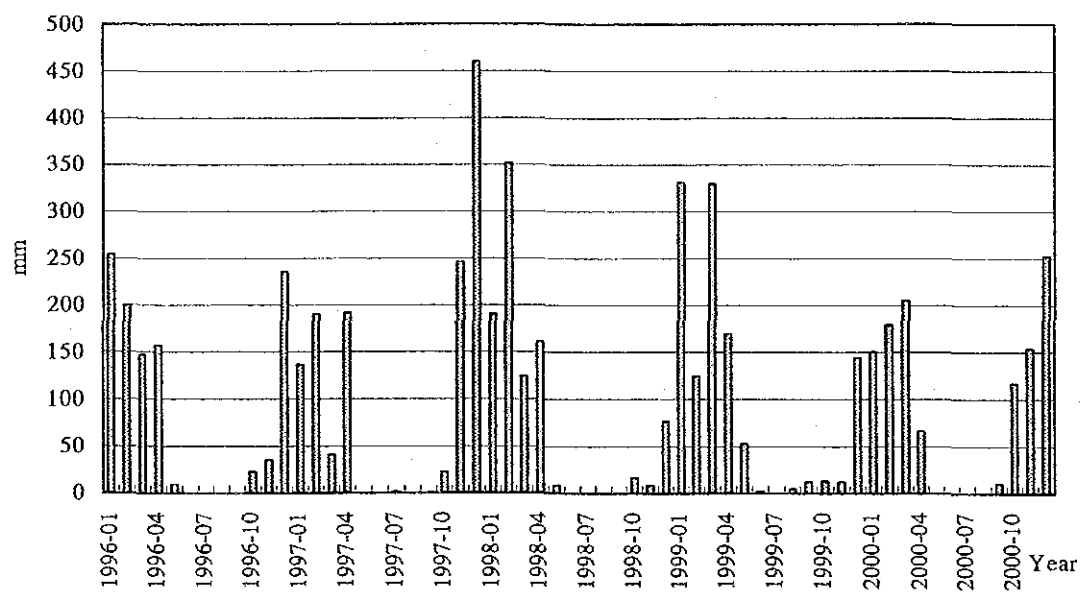
Attached Figure 7 Dar es Salaam Daily Rainfall(mm), 1996-2000



Attached Figure 8 Mwanza Daily Rainfall(mm), 1996-2000



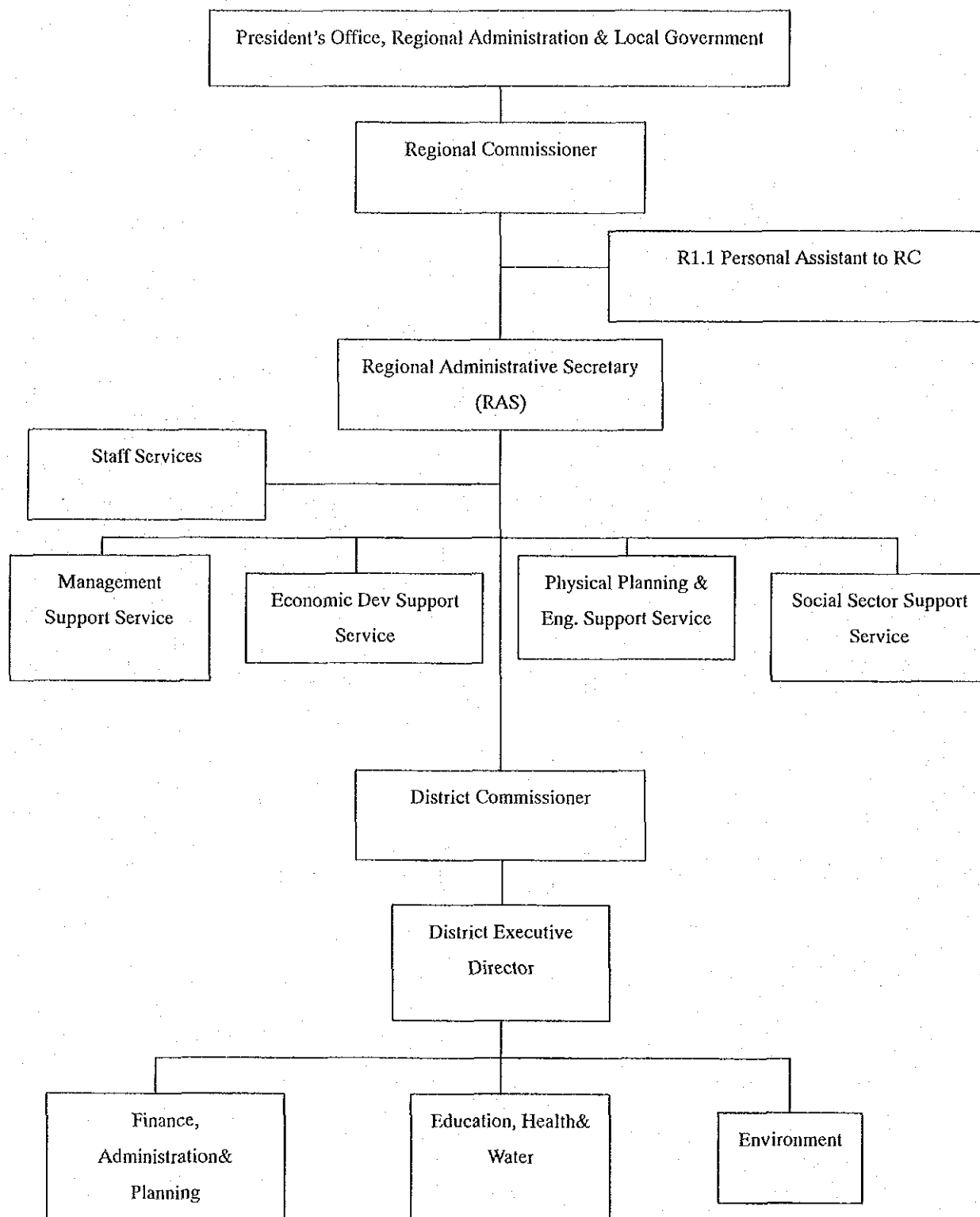
Attached Figure 9 Kigoma Daily Rainfall (mm), 1996-2000



Attached Figure 10 Mbeya Daily Rainfall 1996-2000

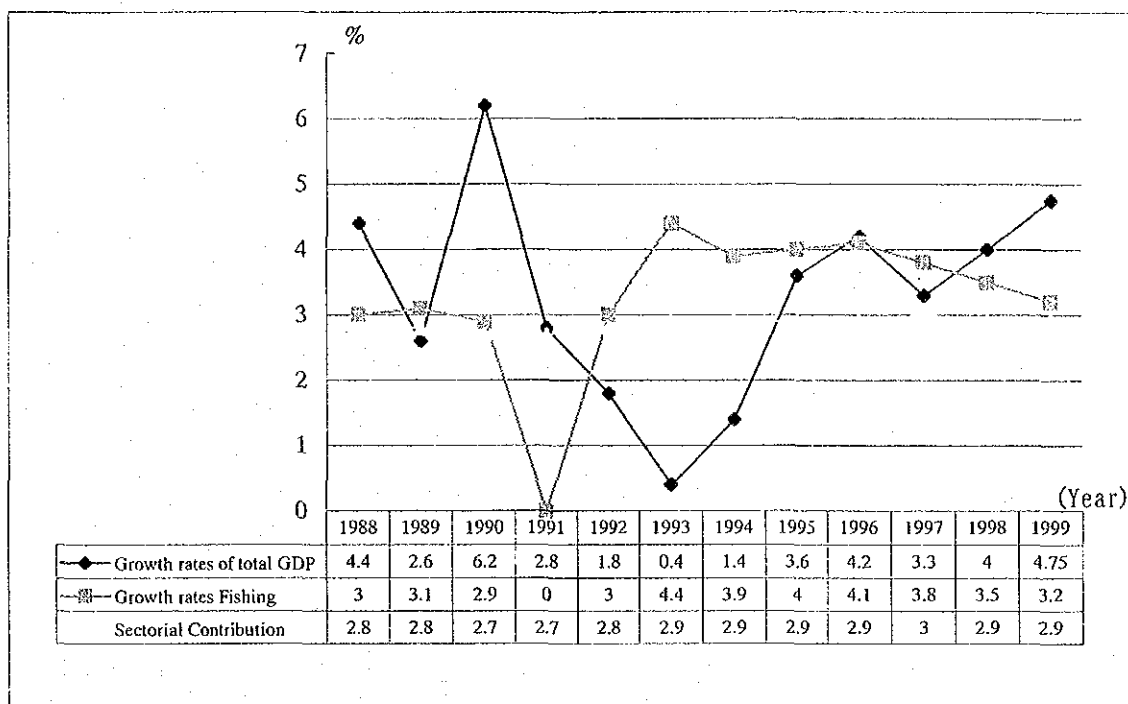
Attached Figure 11 District Map

THE MASTER PLAN STUDY ON FISHERIES DEVELOPMENT
IN THE UNITED REPUBLIC OF TANZANIA



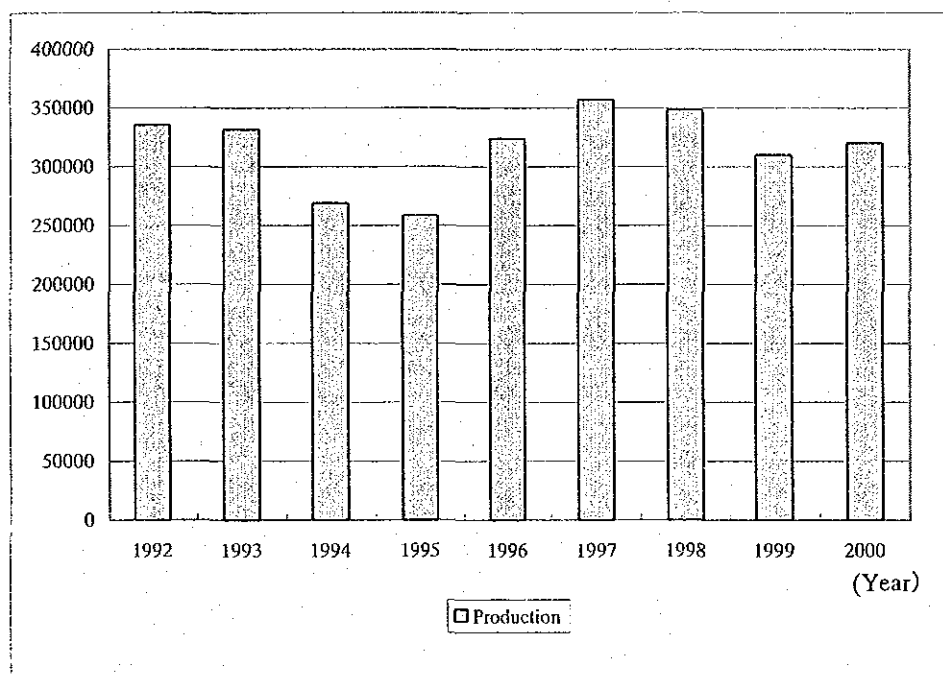
Source: MNRT

Attached Figure 12 Diagram of Local Government Organization



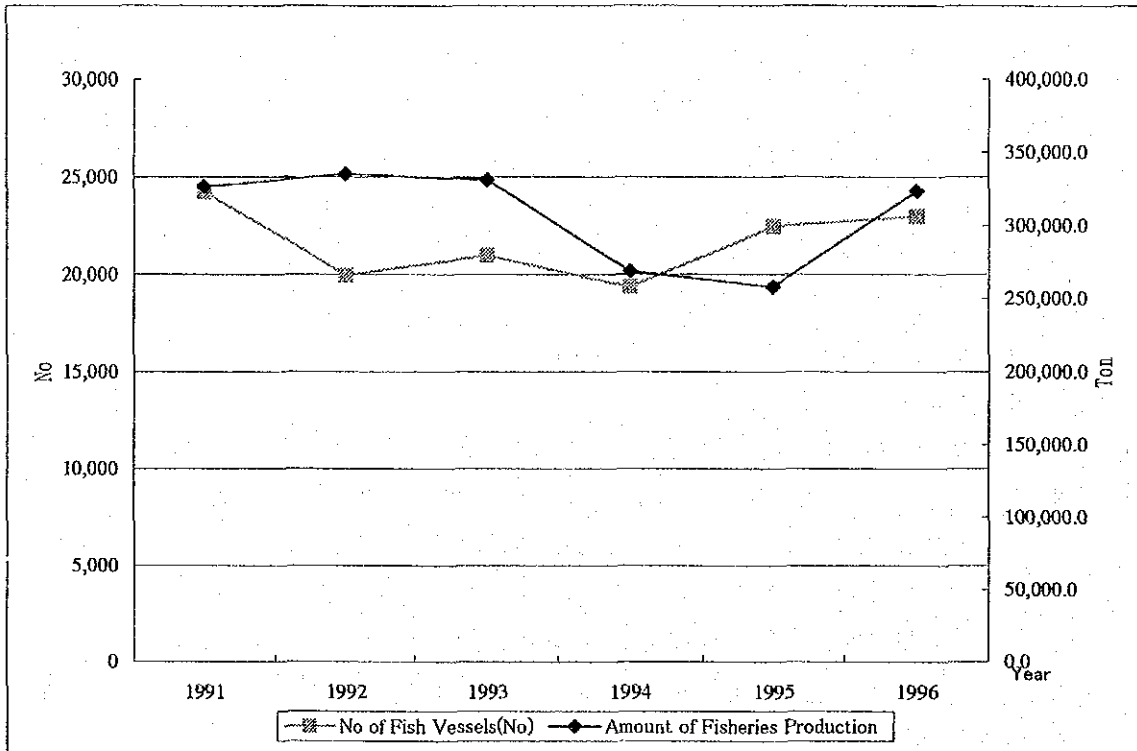
Source: Economics Survey 1999

Attached Figure 13 Change in the Growth Rates of Fishery Sector 1988-1999

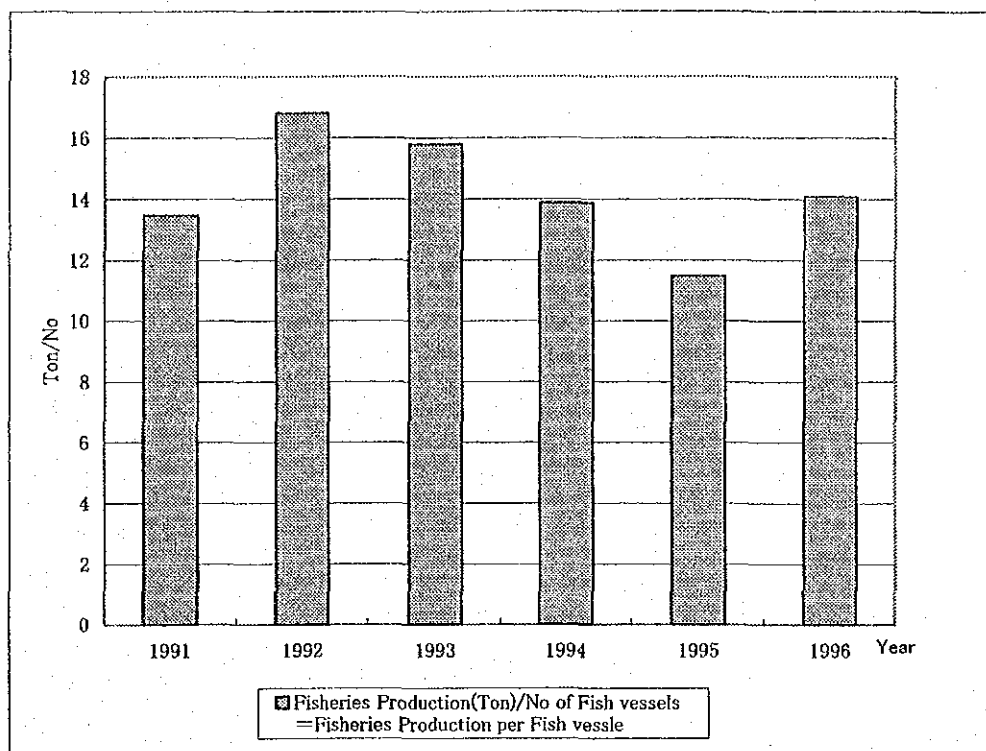


Source: Fisheries Division Statistics

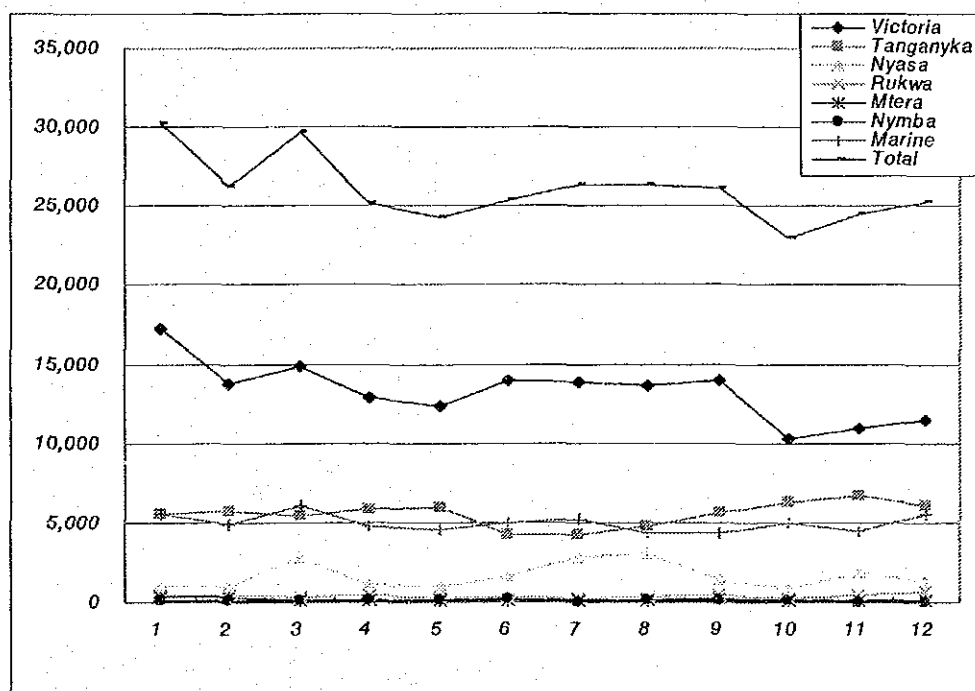
Attached Figure 14 Change in the Fish Production, 1992-2000



Attached Figure 15 Change in Number of Fishing Vessels and Fisheries Production, 1991-1996

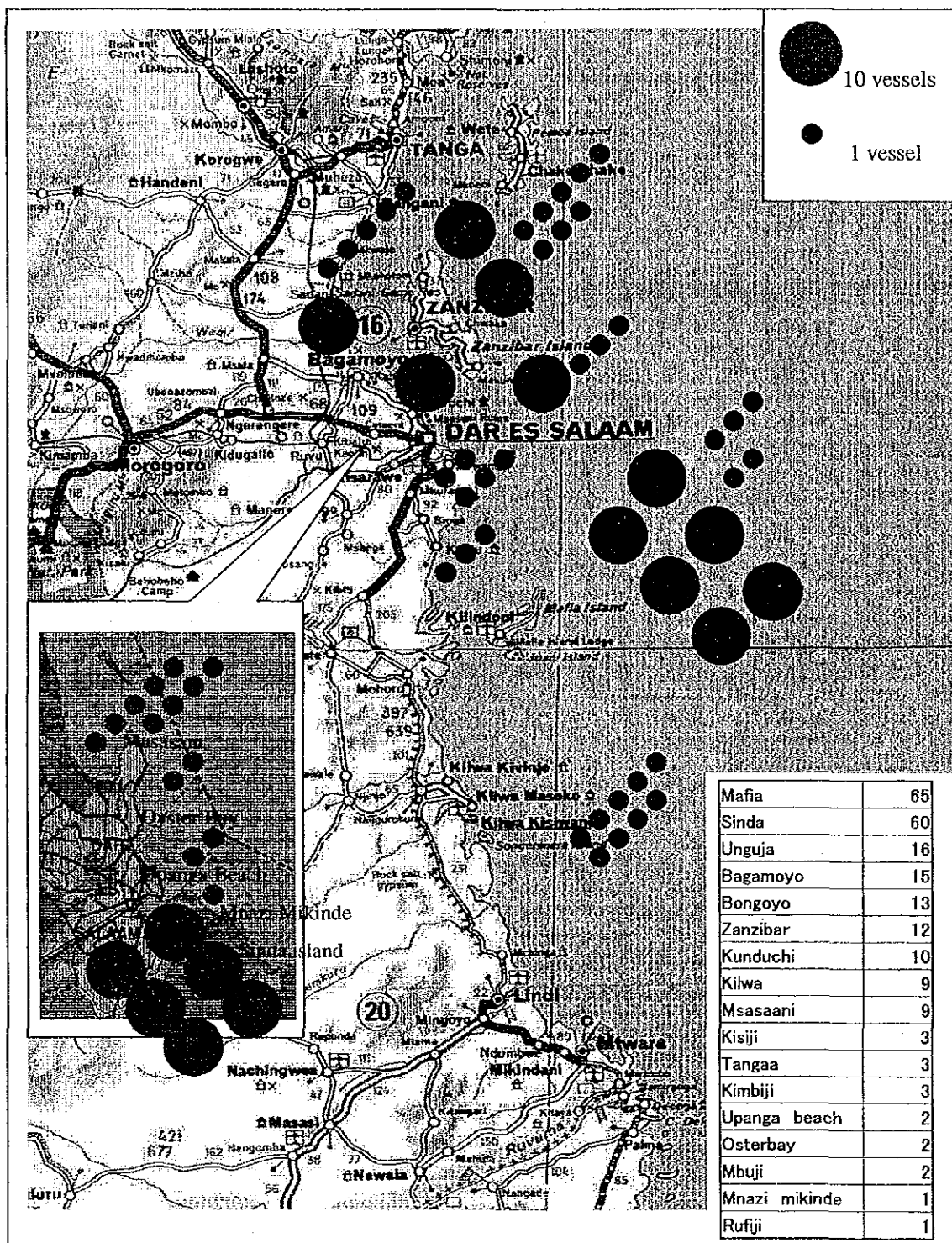


Attached Figure 16 Change in the Productivity of Vessel, 1991-1996

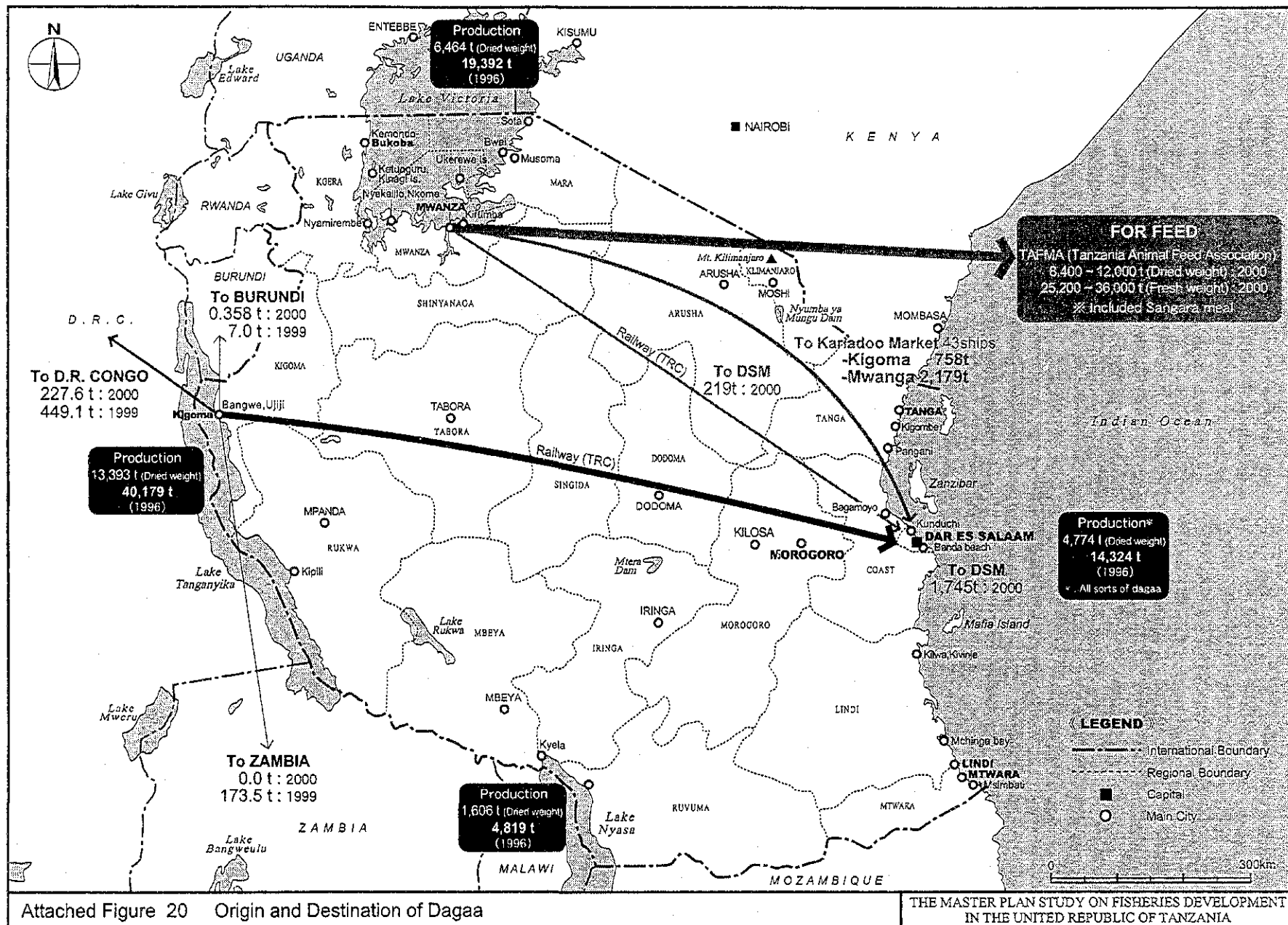


Source: Fisheries Divisions Statistics 96

Attached Figure 17 Change of Monthly Fish Production, 1996

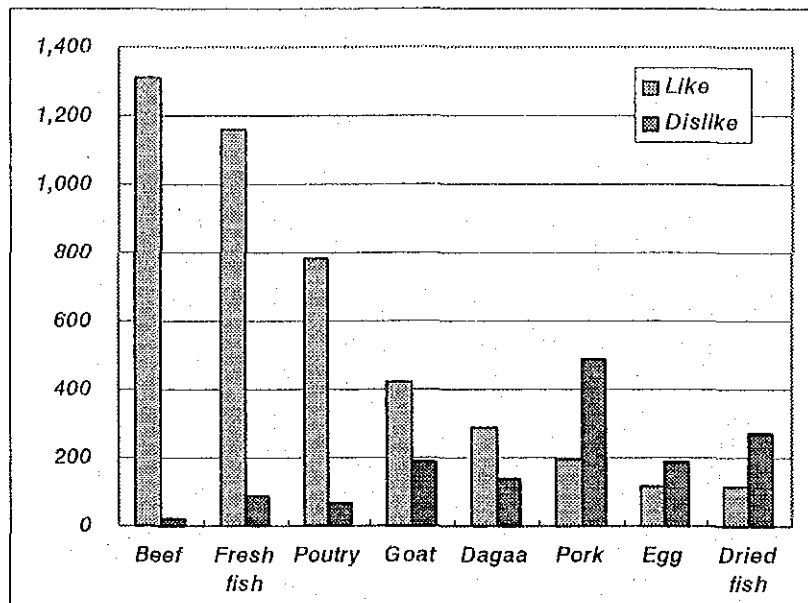


Attached Figure 18 Main Fishing Ground of Vessels that Land at Dar es Salaam



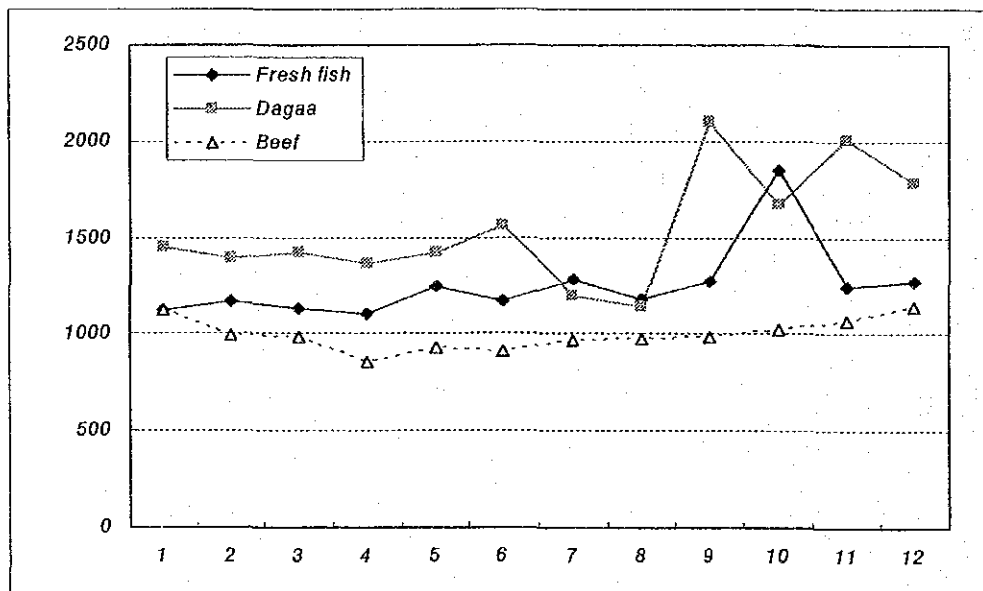
Attached Figure 21 Origin and Destination of Nile perch and its products 2000

THE MASTER PLAN STUDY ON FISHERIES DEVELOPMENT
IN THE UNITED REPUBLIC OF TANZANIA



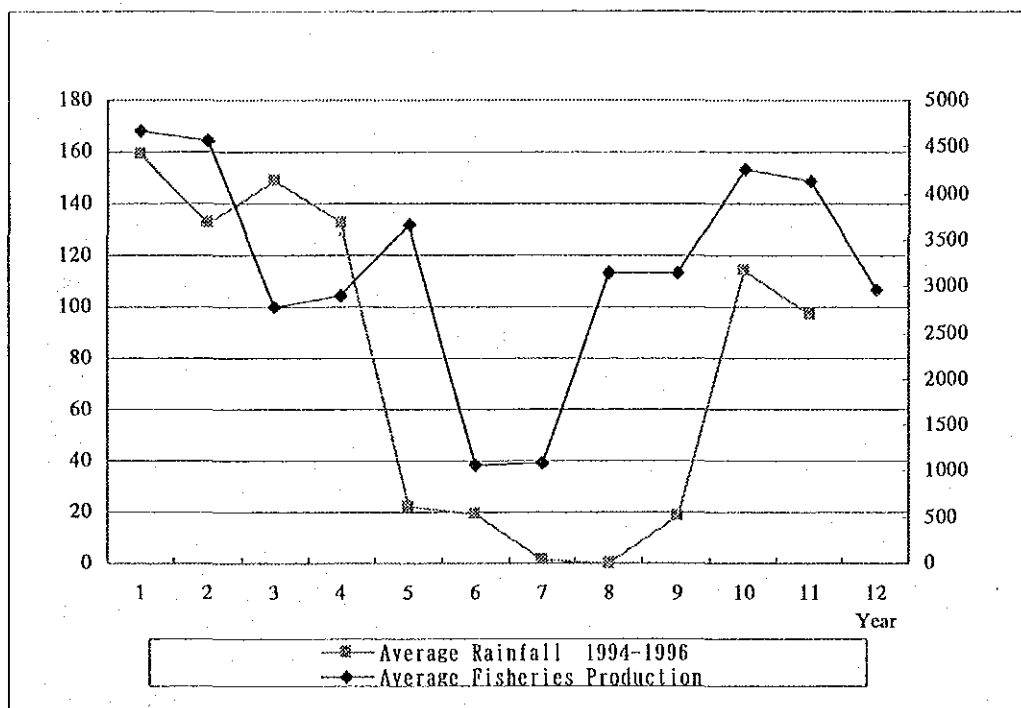
Source: The social and economic survey in fishing village

Attached Figure 22 Taste Tendency to Fish/Meat in Urban Area



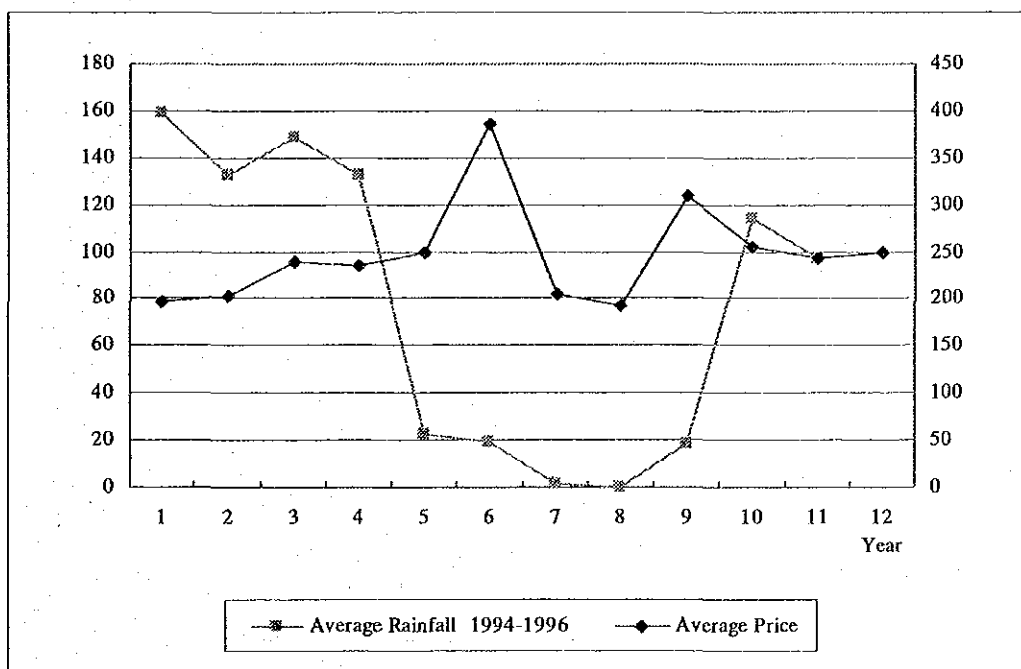
Source: The statistic division

Attached Figure 23 Monthly Change in Price of Fish and Beef



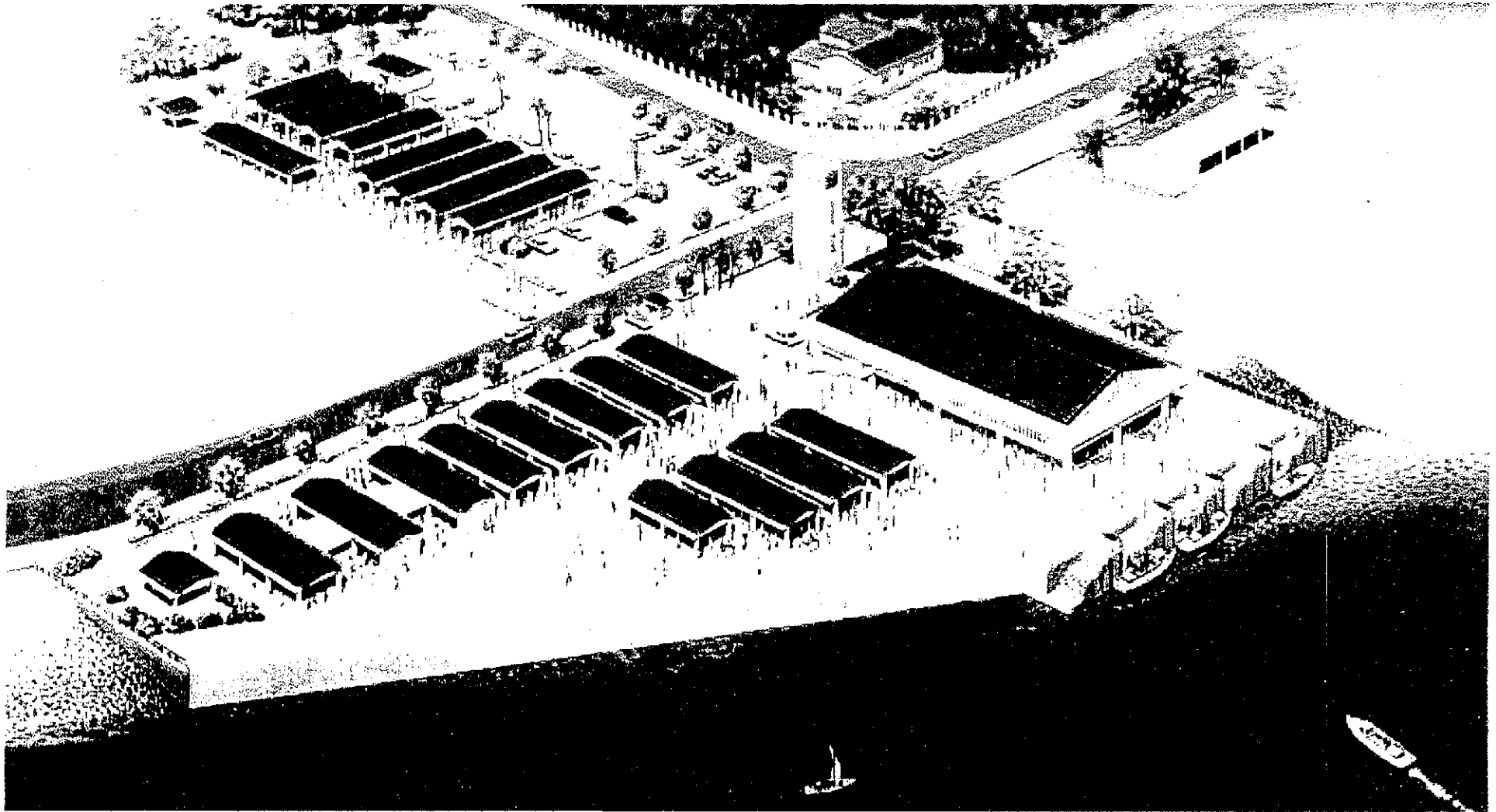
Source: Annual statistic by fisheries Division and the Meteorological Agency

Attached Figure 24 Change in Monthly Rainfall and Fisheries Production in Kigoma



Source: Annual statistic by fisheries Division and the Meteorological Agency

Attached Figure 25 Change in Monthly Rainfall and Price of Fisheries Production in Kigoma



Source: Construction Plan for Dar es Salaam Fish Market

Attached Figure 26 Fish Market at Dar es Salaam

MAP



Source: Ministry of Public Utility

10 YEAR INTEGRATED ROADS PROJECT (IRP) (1990-2000)

SCHEMES PRIOR IRP

Bitumen upgrading/rehabilitation

SCHEMES UNDER IRP

Bitumen Upgrading

Bitumen rehabilitation

Gravel rehabilitation

Spot Improvements to gravel roads

Municipalities

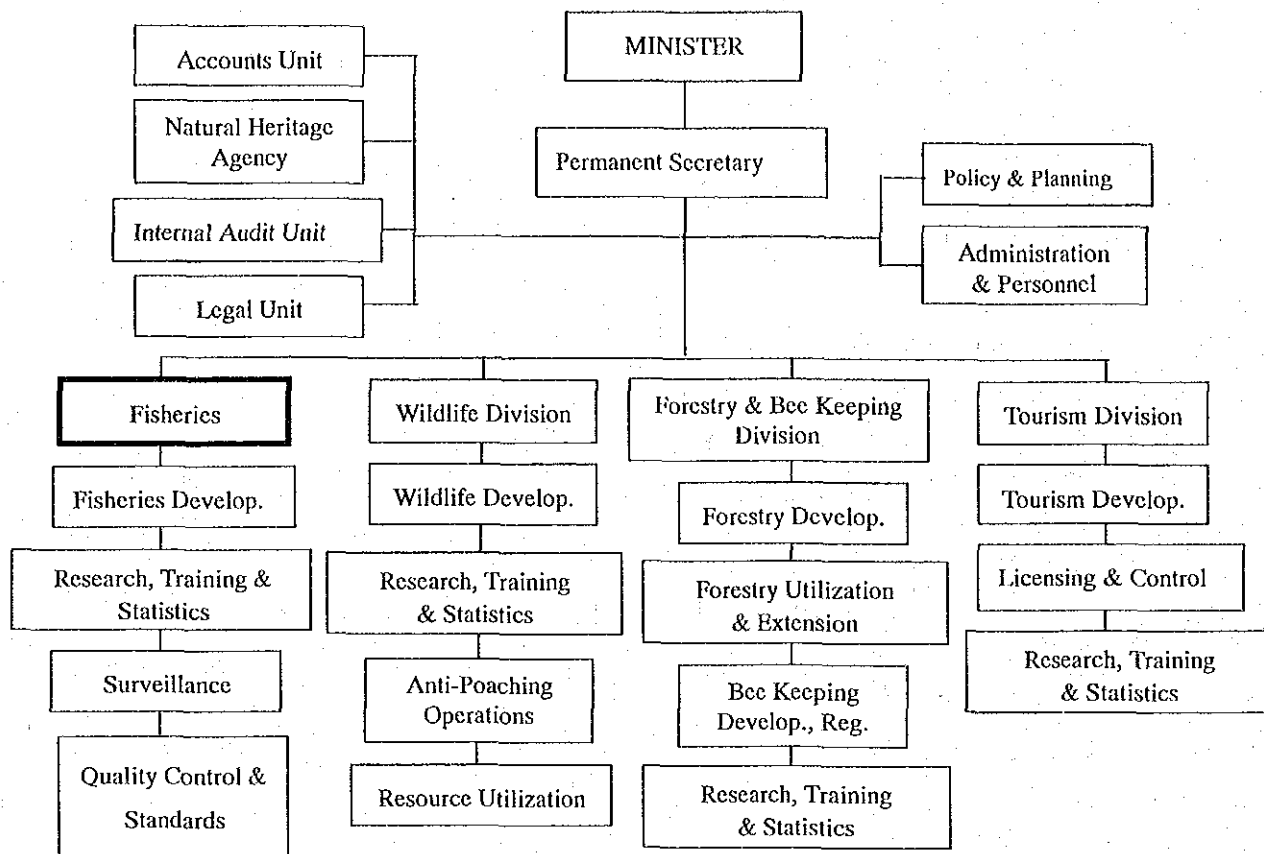
Towns



THE UNITED REPUBLIC OF TANZANIA

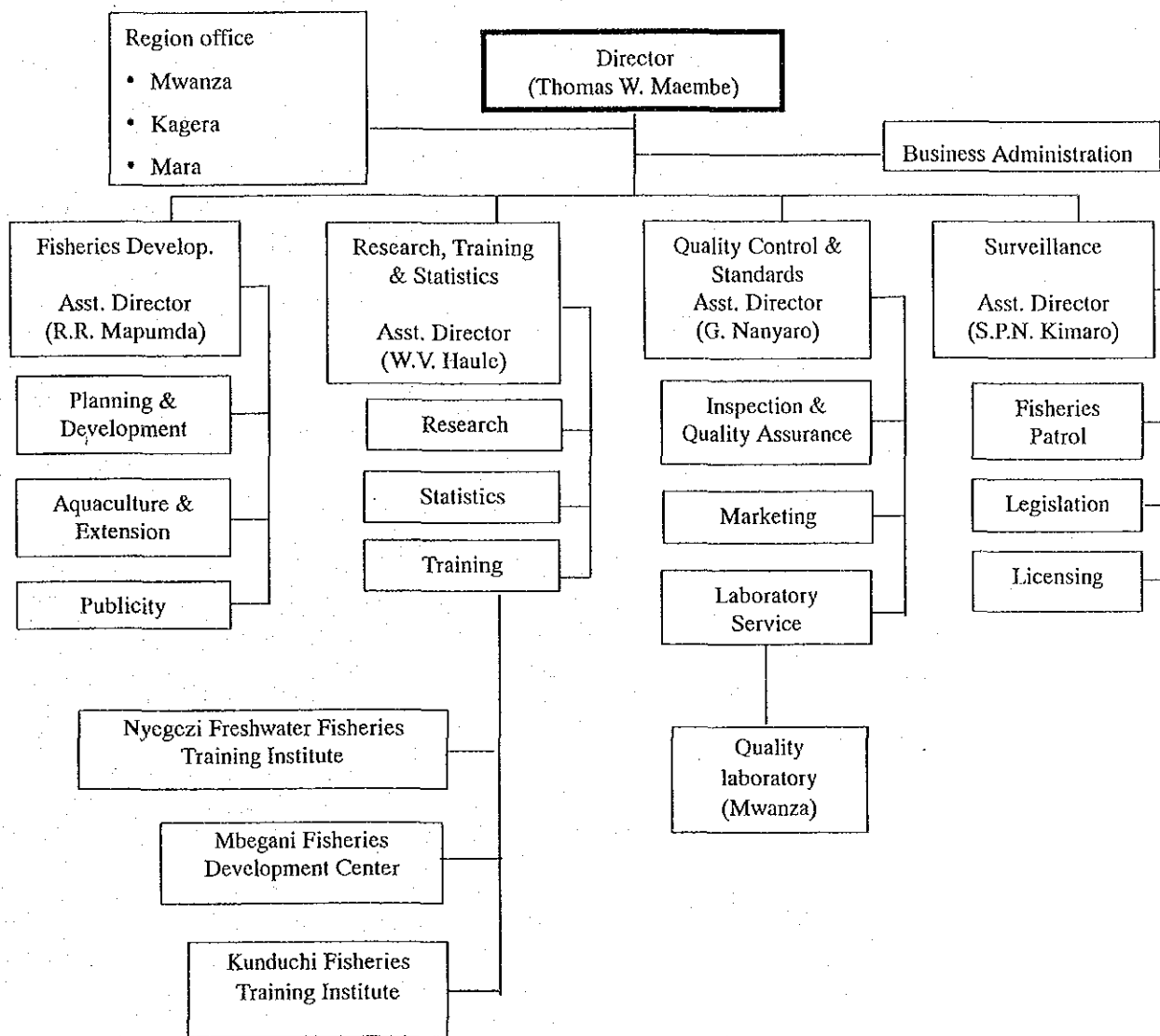
JAMHURI YA MUUNGANO WA TANZANIA

Attached Figure 27 10 Year Integrated Road Project



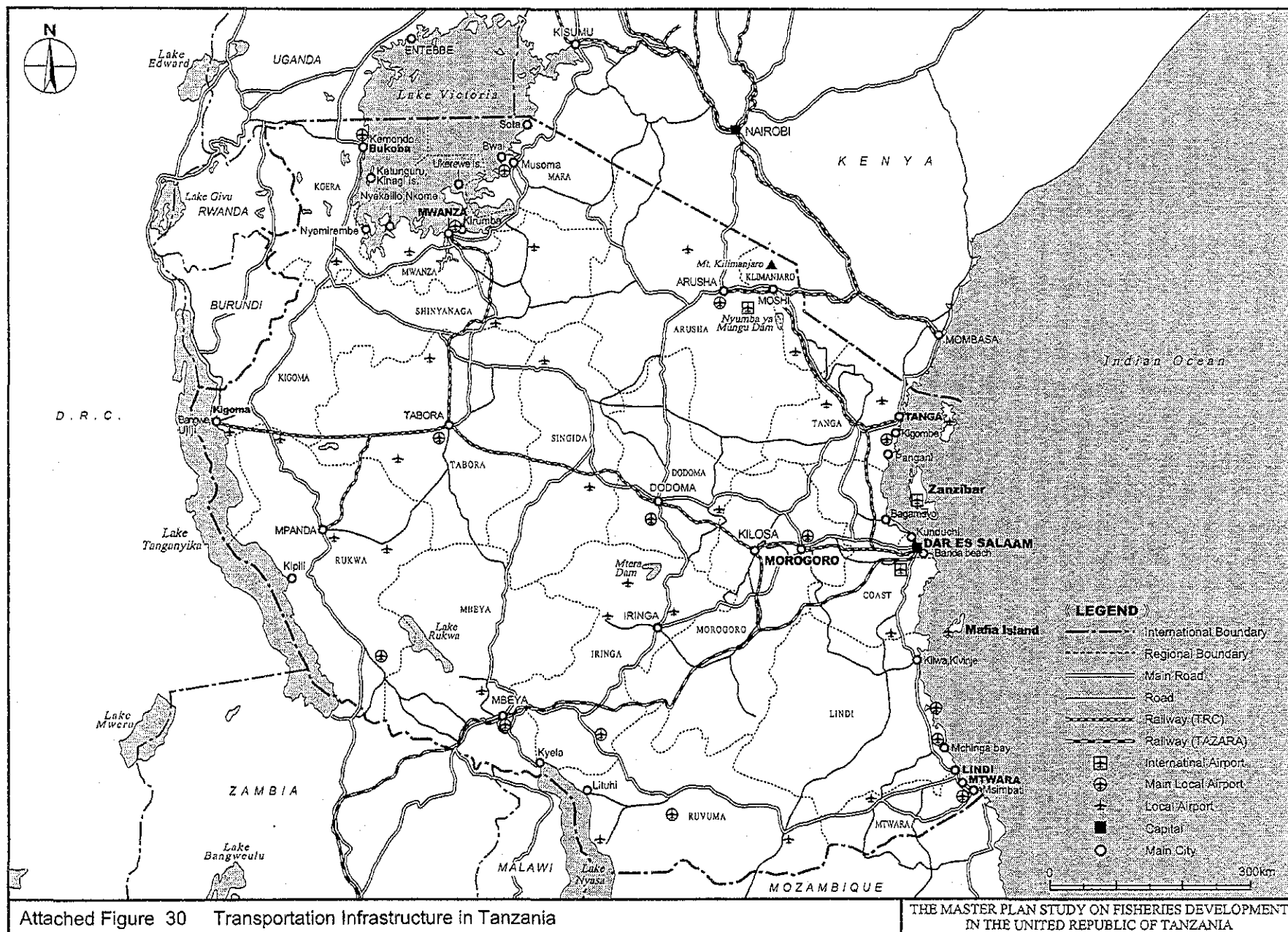
Source: MNRT

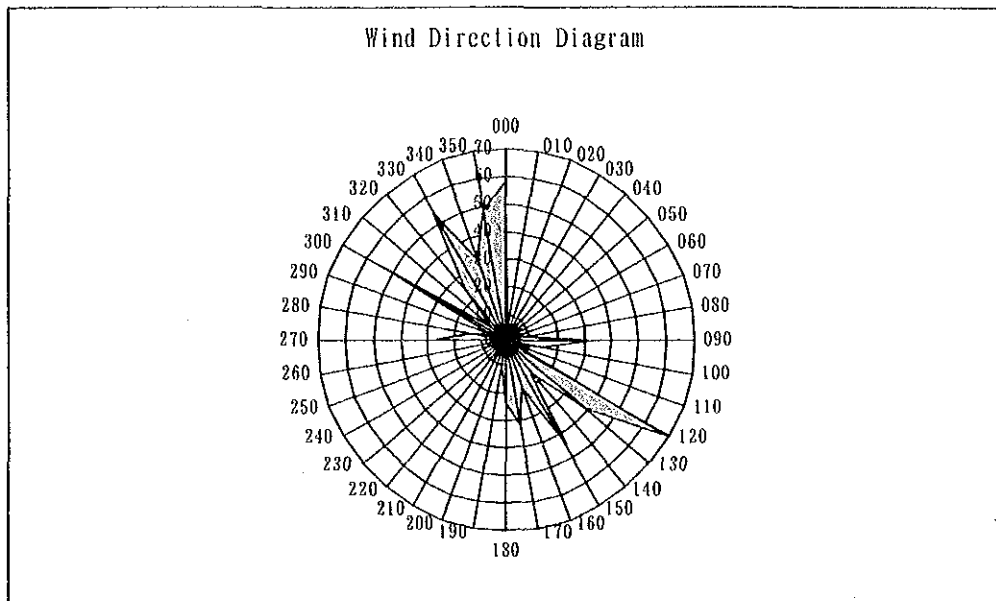
Attached Figure 28 Organization Chart of the Ministry of Natural Resources and Tourism



Source: MNRT

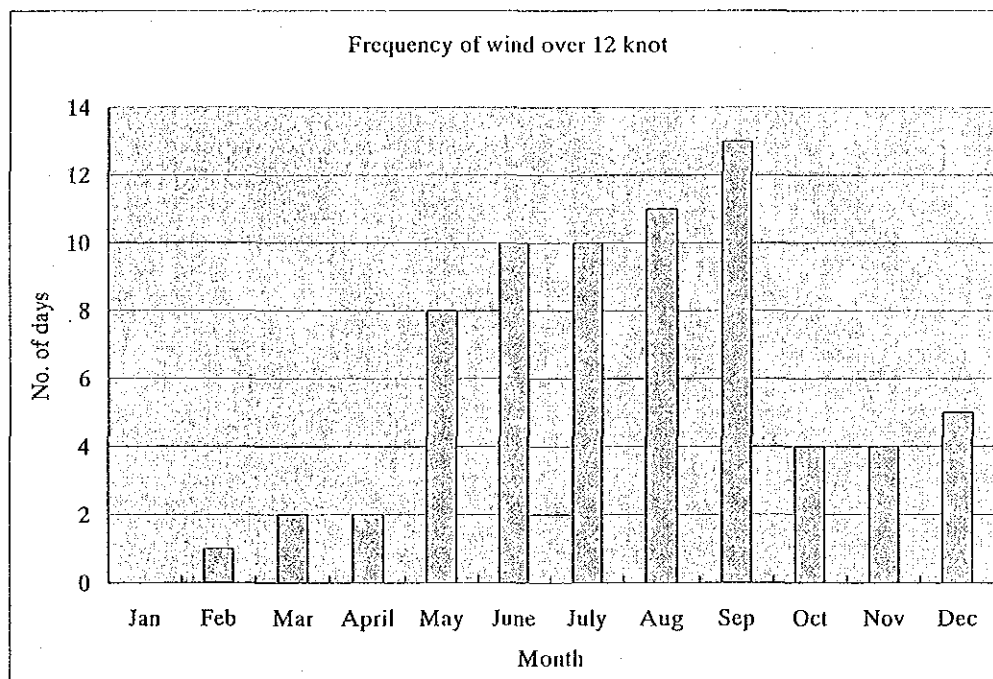
Attached Figure 29 Organization Chart of Fisheries Division



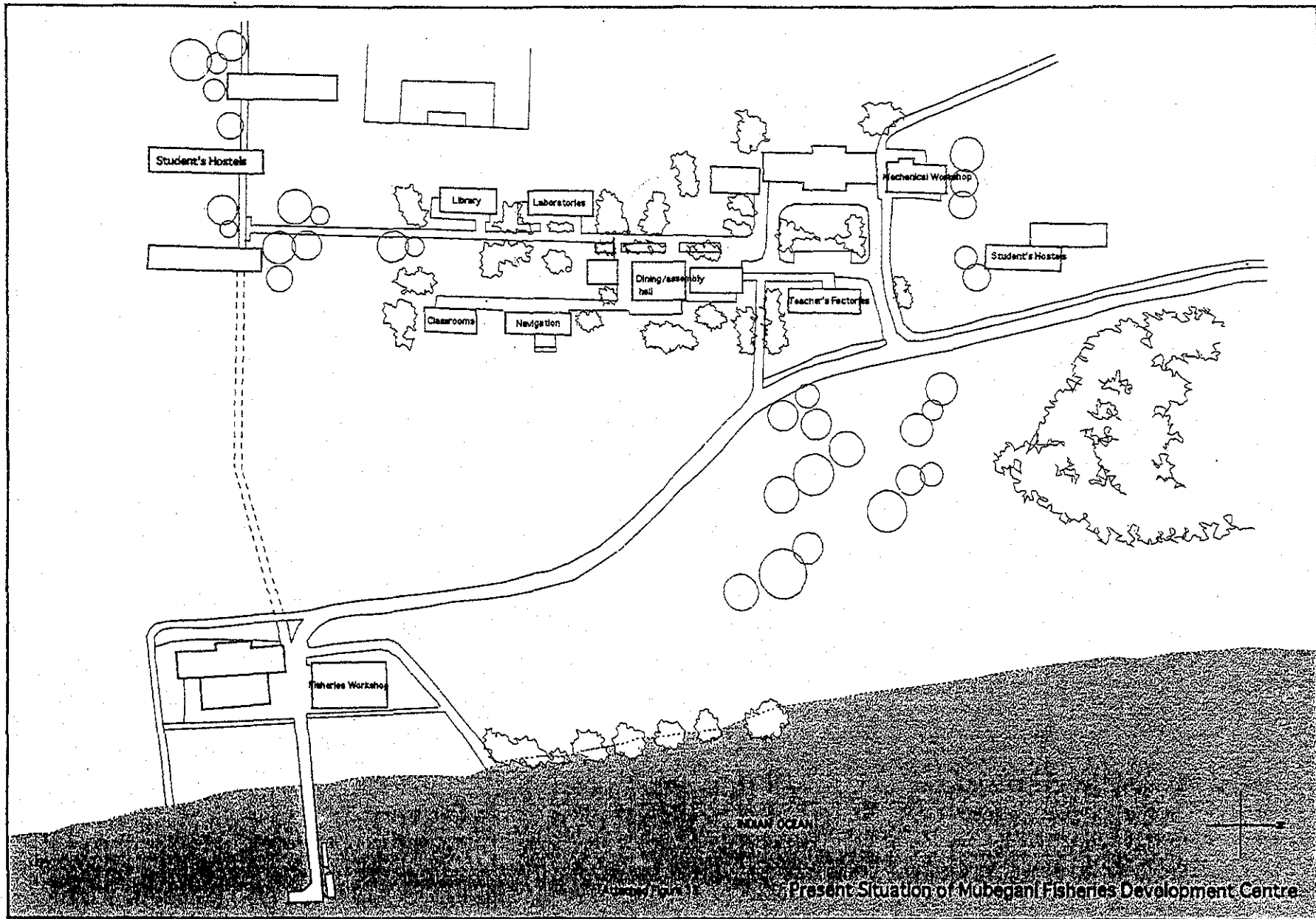


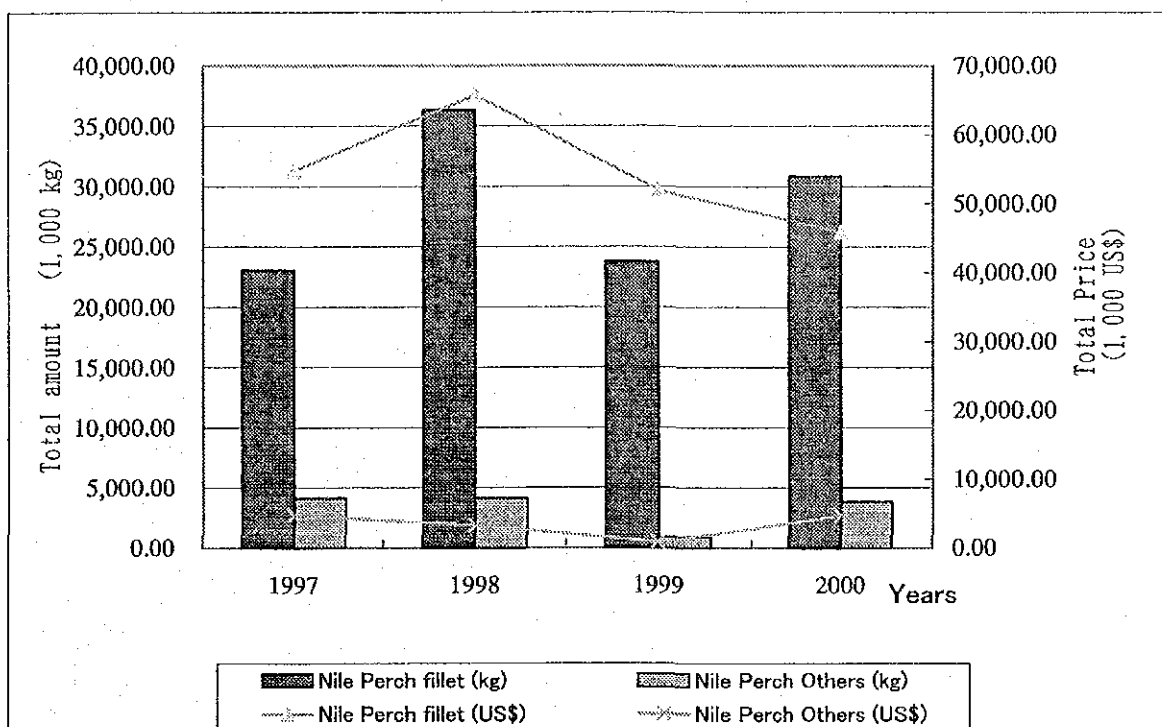
Source: Meteorological Agency, Mwanza, 2000

Attached Figure 31 Wind Direction Diagram in Mwanza



Attached Figure 32 Frequency of Wind Over 12 Knot

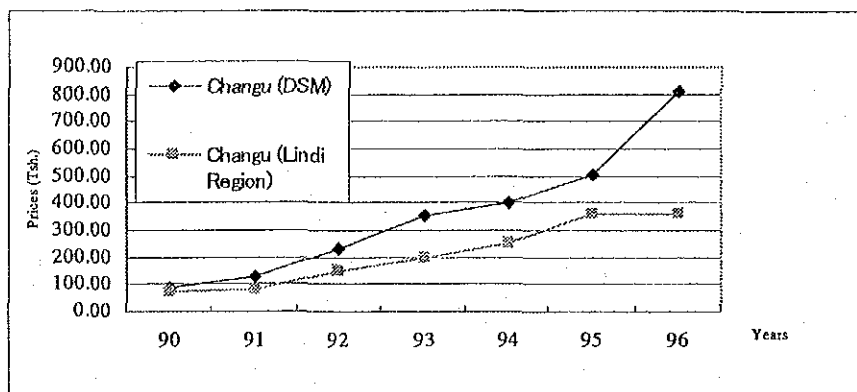




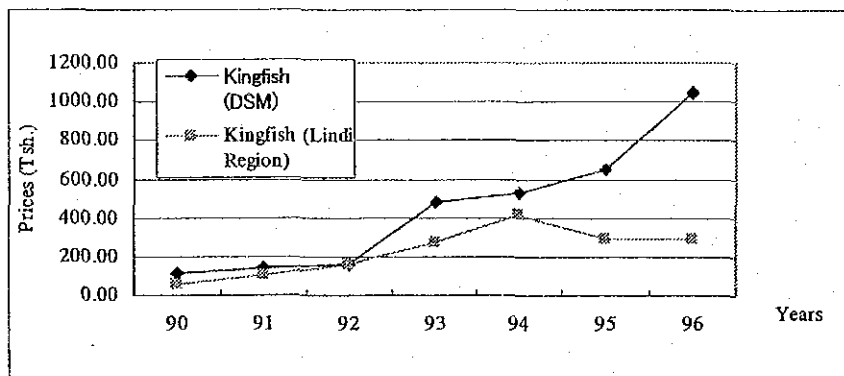
	1997	1998	1999	2000
Nile Perch fillet (kg)	23,075.91	36,386.24	23,757.46	30,831.84
Nile Perch Others (kg)	4,145.14	4,133.58	897.79	3,846.83

	1997	1998	1999	2000
Nile Perch fillet (US\$)	54,821.41	65,727.80	51,992.75	45,903.21
Nile Perch Others (US\$)	4,712.21	3,284.36	838.93	4,704.12

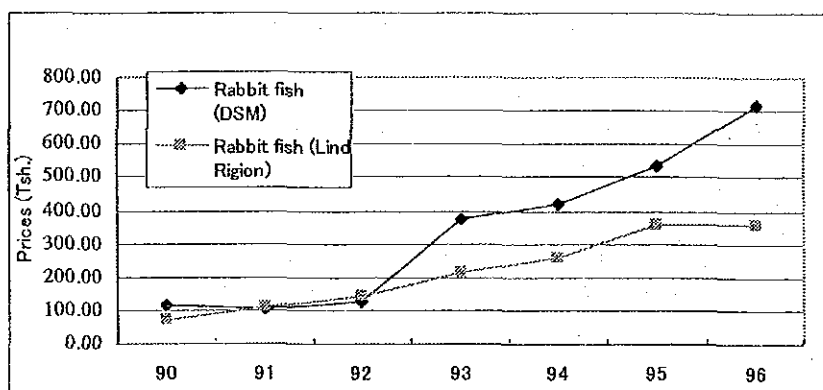
Attached Figure 34 Amount and Price of Nile perch Export



Attached Figure 35 Trend of Sale Price of Changu at Landing Site, 1990-1996



Attached Figure 36 Trend of Sale Price of Kingfish at Landing Site, 1990-1996



Attached Figure 37 Trend of Sale Price of Rabbitfish at Landing Site, 1990-1996