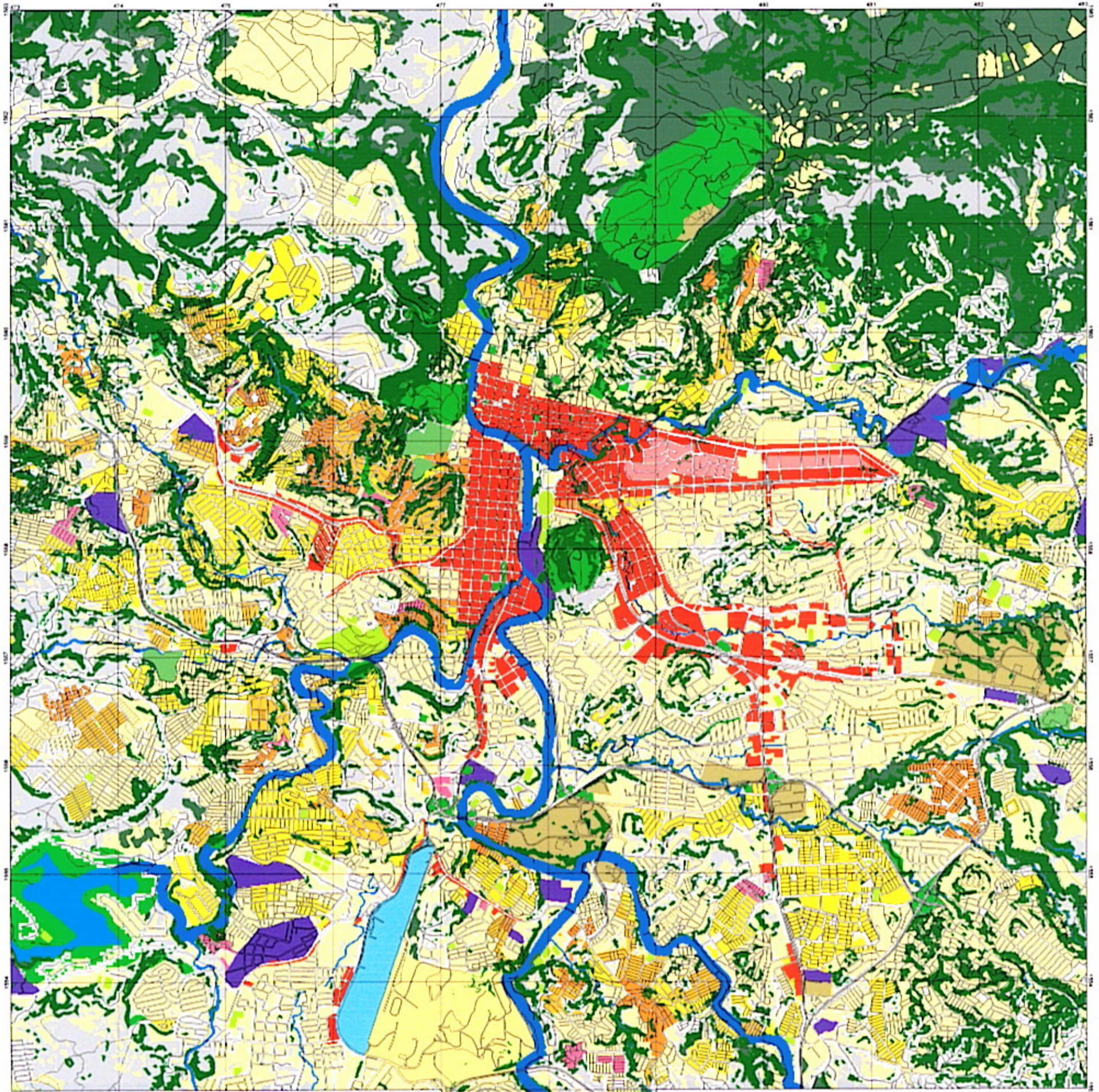


# The Study on Flood Control and Landslide Prevention in Tegucigalpa Metropolitan Area

## Future Land Use Map



**Symbology**

Green	Disaster Prevention Green Area
Light Blue	Airport
Light Green	Cemetery
Light Yellow	Protocol & Business Area
Red	Commercial
Dark Green	Forest & Shrubs
Dark Blue	Industrial Areas
Light Green	Military Facility
Dark Green	Park & Green Areas
Light Green	Public Facility
Yellow	R-1: Residential 250 pers. / ha
Light Yellow	R-2: Residential 400 pers. / ha
Orange	R-3: Residential 500 pers. / ha
Dark Orange	R-4: Residential 800 pers. / ha
Red-Orange	R-5: Residential > 800 pers. / ha
Blue	Reservoir
Dark Blue	River Reserve Area
Grey	Roads & Streets
Yellow	Sports Field
White	Vacant Space
Thin Grey Lines	Road Network



Note

The Land Use Map was created by the joint venture of PACIFIC CONSULTANTS INTERNATIONAL and NIKKEN CONSULTANTS for THE STUDY ON FLOOD CONTROL AND LANDSLIDE PREVENTION IN TEGUCIGALPA METROPOLITAN AREA OF THE REPUBLIC OF HONDURAS, placed on order by JICA (JAPAN INTERNATIONAL COOPERATION AGENCY). The field survey and analysis were performed by Hiroshi Tanaka from May, 2001 through December, 2001.

