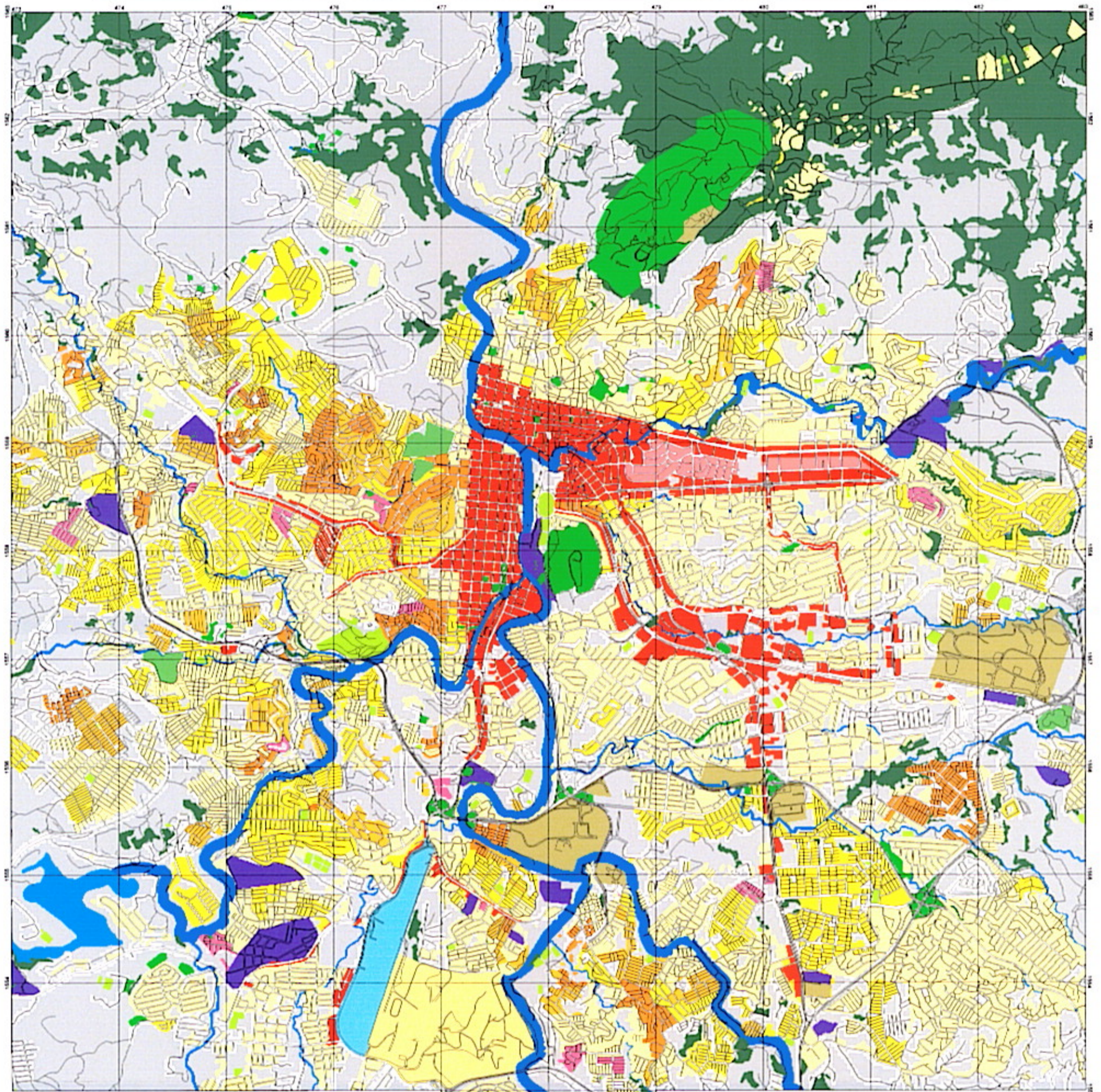


The Study on Flood Control and Landslide Prevention in Tegucigalpa Metropolitan Area

Present Land Use Map



Symbology

- Airport
- Cemetery
- Protocol & Business Area
- Commercial
- Forest & Shrubs
- Industrial Areas
- Military Facility
- Park & Green Areas
- Public Facility
- R-1: Residential 250 pers. / ha
- R-2: Residential 400 pers. / ha
- R-3: Residential 500 pers. / ha
- R-4: Residential 800 pers. / ha
- R-5: Residential > 800 pers. / ha
- Reservoir
- River Reserve Area
- Roads & Streets
- Sports Field
- Vacant Space
- Road Network



1:40000

Note

The Land Use Map was created by the joint venture of PACIFIC CONSULTANTS INTERNATIONAL and NIKKEN CONSULTANTS for THE STUDY ON FLOOD CONTROL AND LANDSLIDE PREVENTION IN TEGUCIGALPA METROPOLITAN AREA OF THE REPUBLIC OF HONDURAS* placed an order by JICA (JAPAN INTERNATIONAL COOPERATION AGENCY). The field survey and analysis were performed by Hiroshi Tanaka from May, 2001 through December, 2001.

Vertical Scale
Mag. Scale: 1:20000
Magnetic Declination for 1992
10° N, 1993