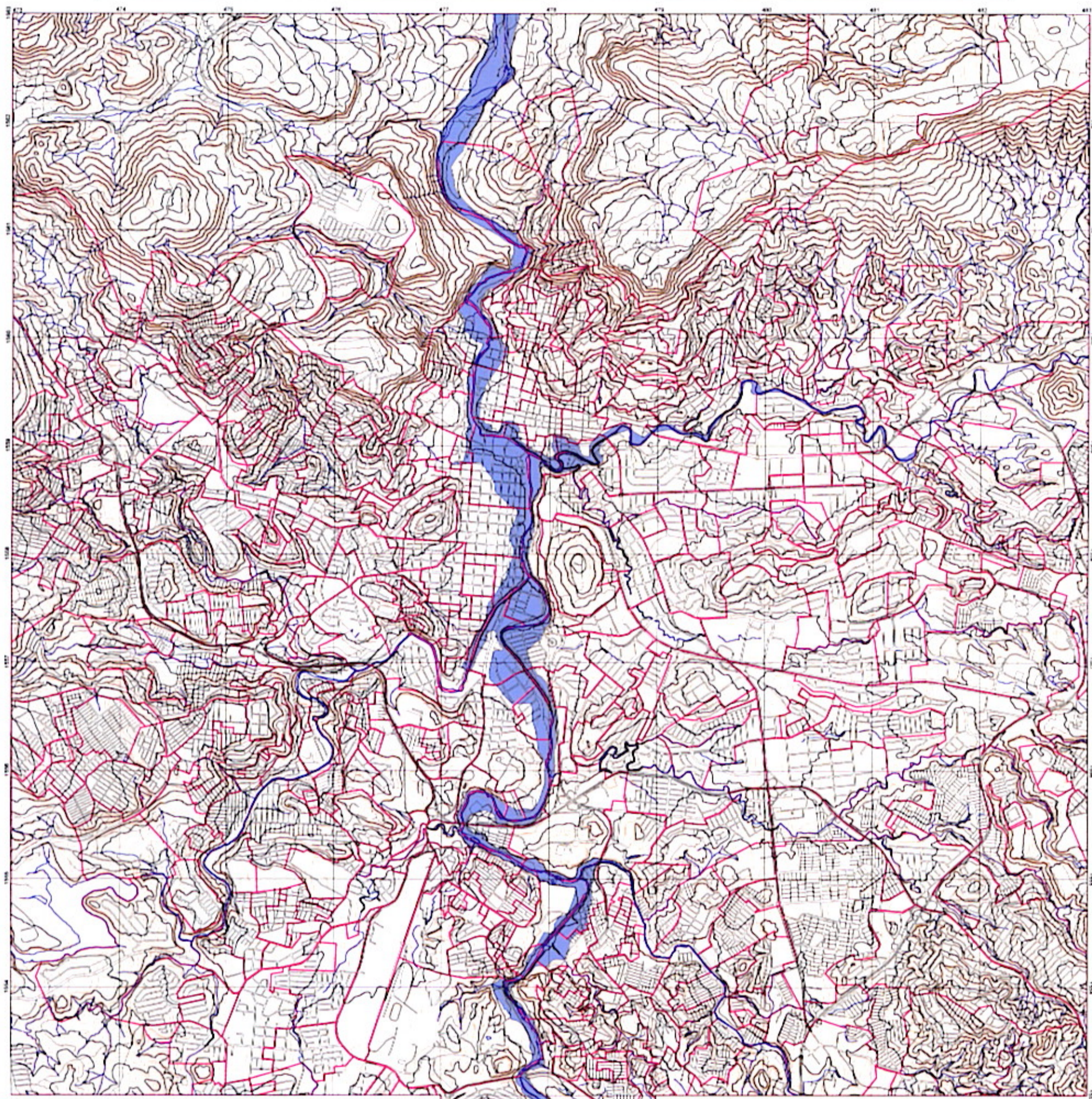


The Study on Flood Control and Landslide Prevention in Tegucigalpa Metropolitan Area

Past Inundated Area Map



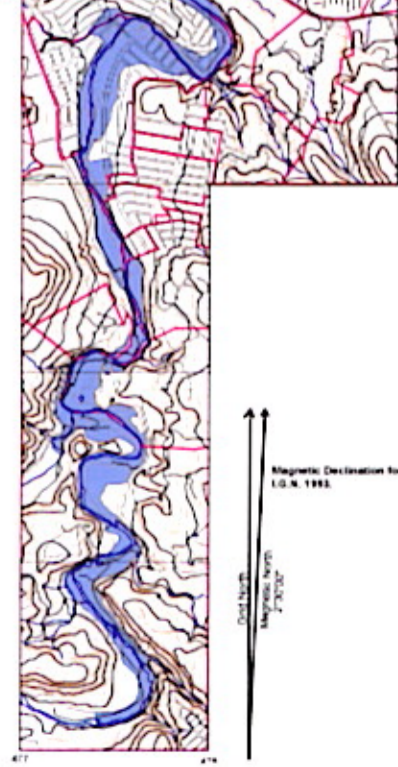
Symbology

- Inundated Area in Mitch
- Rivers
- Index 25 m Contours
- 5 m Interval Contours
- Road Network
- Colonia Boundary



Note

This Map was created by the joint venture of PACIFIC CONSULTANTS INTERNATIONAL and NIKKEN CONSULTANTS for "THE STUDY ON FLOOD CONTROL AND LANDSLIDE PREVENTION IN TEGUCIGALPA METROPOLITAN AREA OF THE REPUBLIC OF HONDURAS" granted an order by JICA (JAPAN INTERNATIONAL COOPERATION AGENCY). This map shows inundated area in Mitch (October, 1998) based on the result of the interview survey "High Water Mark Survey" from April, 2001 through June, 2001.



True North
Magnetic North
Magnetic Declination for 1992:
1.0 N, 1995:
2.0 N