

**JAPAN INTERNATIONAL COOPERATION AGENCY (JICA)**

**MINISTRY OF PUBLIC WORKS, TRANSPORT AND HOUSING (SOPTRAVI)**

**MINISTRY OF INTERNATIONAL COOPERATION (SETCO)**

**NATIONAL EMERGENCY COMMITTEE (COPECO)**

**NATIONAL SERVICE AUTHORITY FOR WATER SUPPLY AND SEWERAGE (SANAA)**

**MINISTRY OF NATURAL RESOURCES AND ENVIRONMENT (SERNA)**

**MUNICIPALITY OF THE CENTRAL DISTRICT (AMDC)**

## **THE STUDY**

**ON FLOOD CONTROL AND LANDSLIDE PREVENTION  
IN TEGUCIGALPA METROPOLITAN AREA  
OF THE REPUBLIC OF HONDURAS**

# **FINAL REPORT**

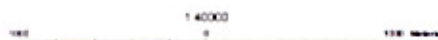
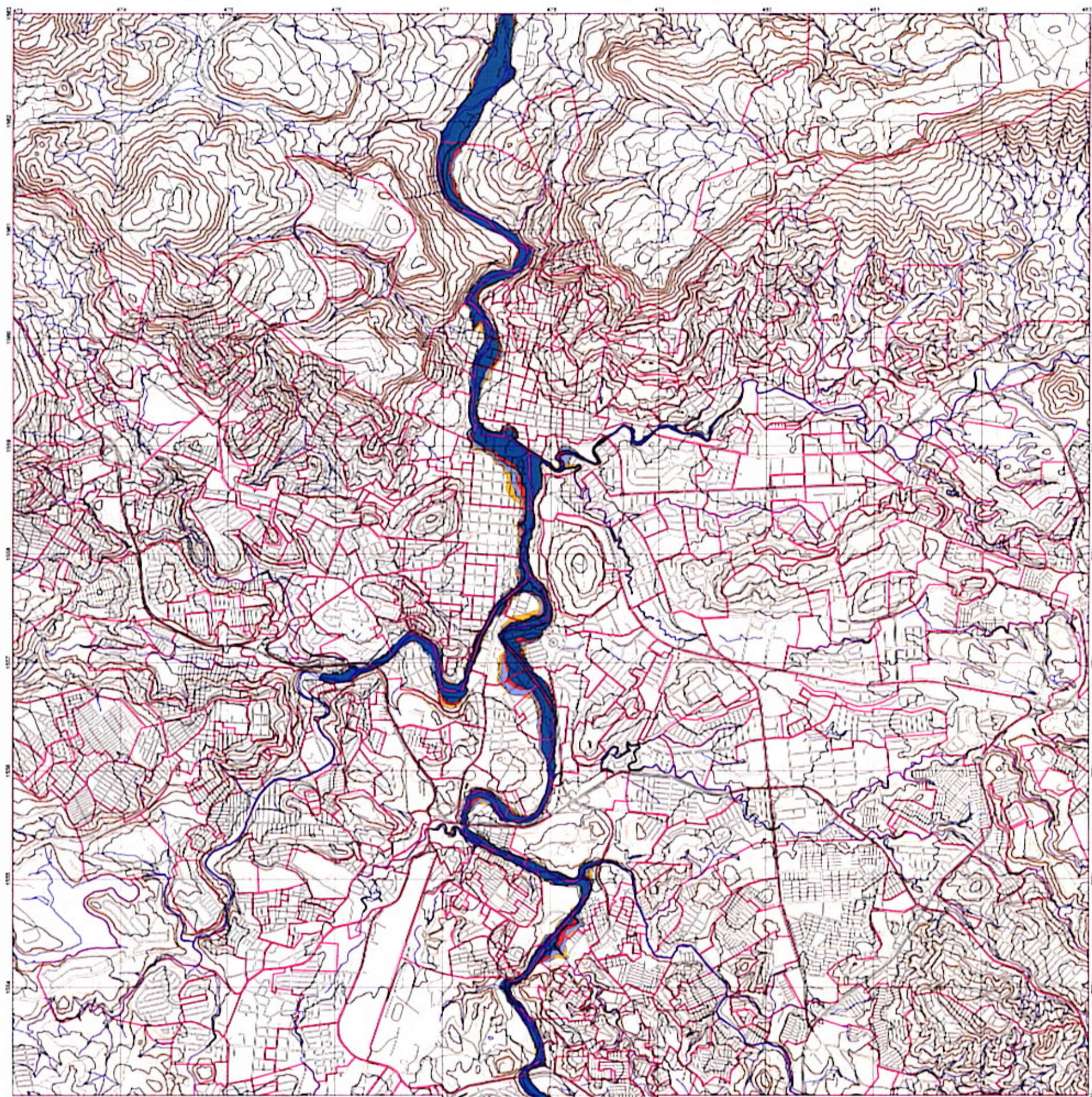
## **MAPS**

**MAY 2002**

**PACIFIC CONSULTANTS INTERNATIONAL  
NIKKEN CONSULTANTS, INC.**

# The Study on Flood Control and Landslide Prevention in Tegucigalpa Metropolitan Area

## Flood Hazard Map



**Note**

This Hazard Map was created by the joint venture of PACIFIC CONSULTANTS INTERNATIONAL and NIKKEN CONSULTANTS for THE STUDY ON FLOOD CONTROL AND LANDSLIDE PREVENTION IN TEGUCIGALPA METROPOLITAN AREA OF THE REPUBLIC OF HONDURAS, financed by JICA (JAPAN INTERNATIONAL COOPERATION AGENCY). The analysis was performed by Chasak Srijungtham from April, 2001 through October, 2001.

