

Figure J.4.13

Landslide A Areas, These Affected Areas and Slope Failure Areas-4

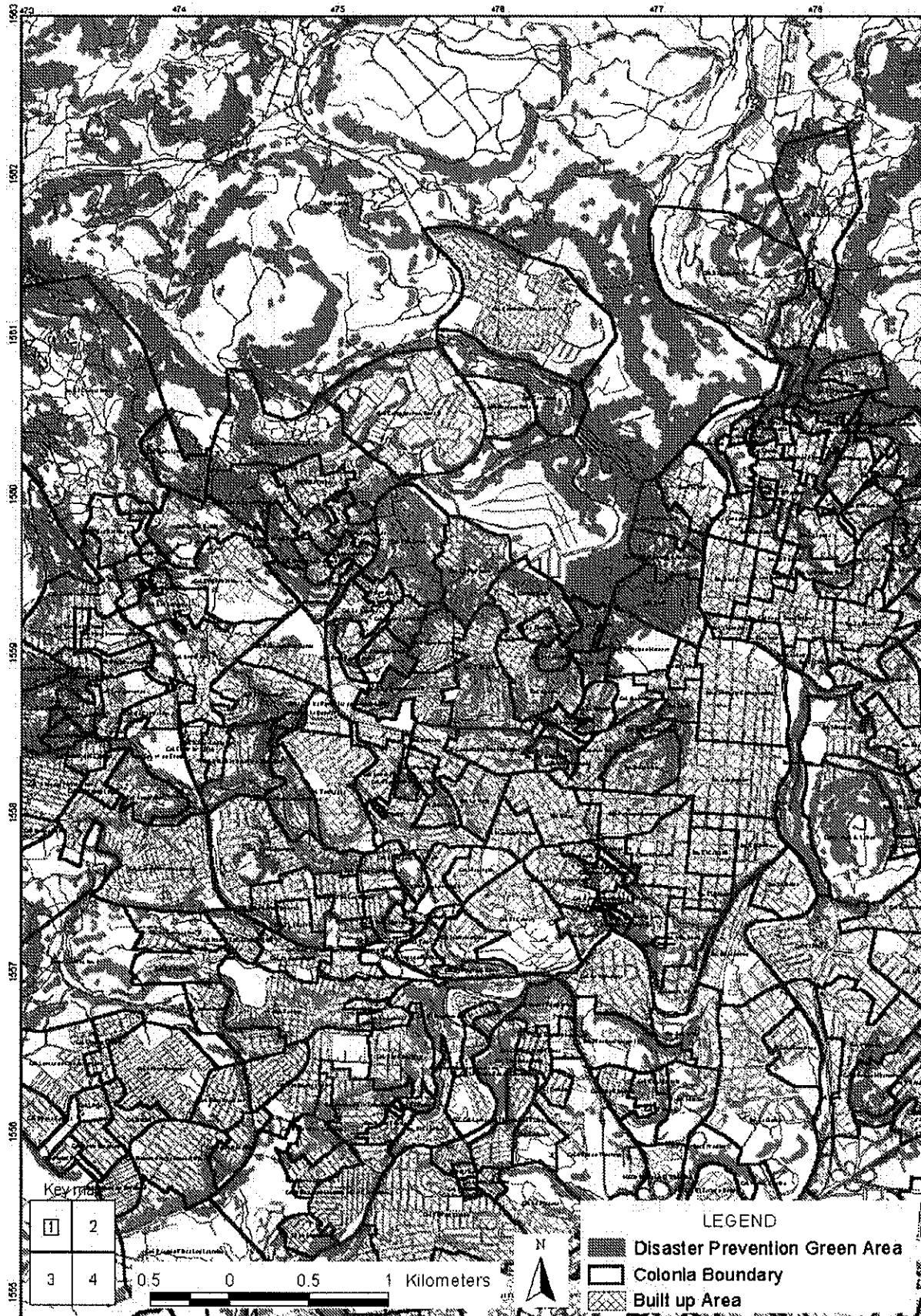


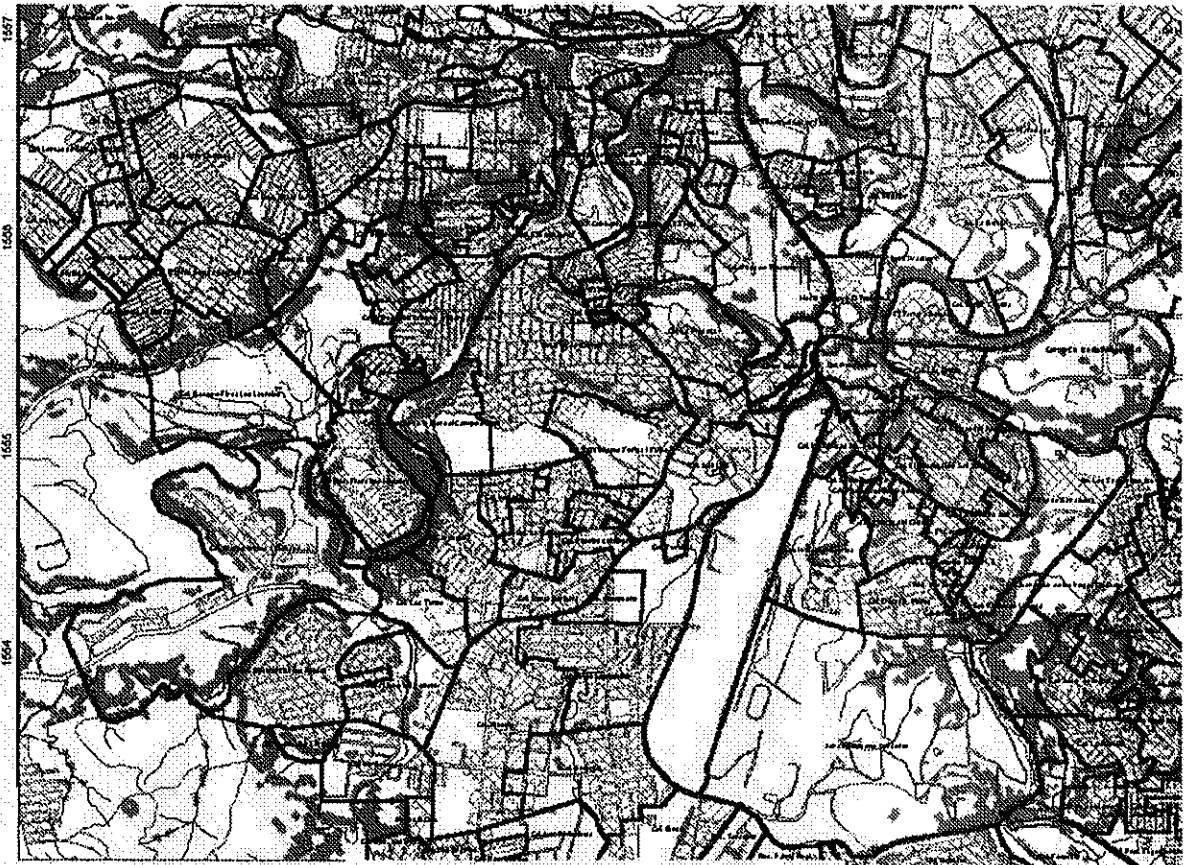
Figure J.4.14




Proposed Disaster Prevention Green Areas-1



Figure J.4.15

Proposed Disaster Prevention Green Areas-2



- LEGEND
-  Disaster Prevention Green Area
 -  Colonia Boundary
 -  Built up Area

Key map

1	2
3	4

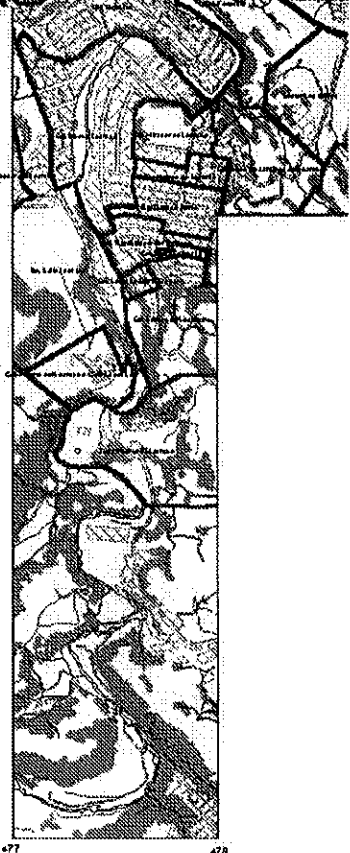
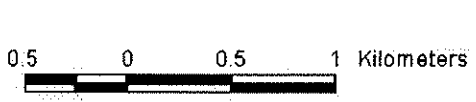
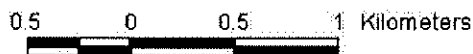
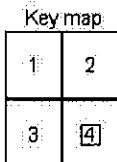
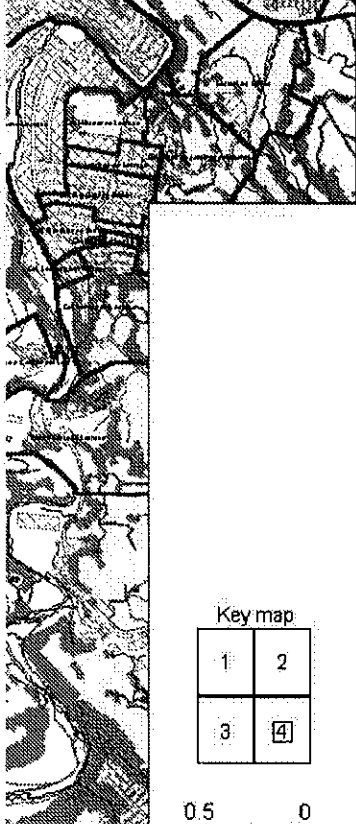


Figure J.4.16

Proposed Disaster Prevention Green Areas-3



LEGEND




-  Disaster Prevention Green Area
-  Colonia Boundary
-  Built up Area

Figure J.4.17

Proposed Disaster Prevention Green Areas-4

REFERENCES

- 1) Principales zonas de riesgos de la capital
- 2) La Gaceta, Acuerdo no. 251, mar.1978, El Consejo Metropolitano del Distrito Central
- 3) Indicadores generales de Honduras, AMDC
- 4) La Gaceta, Acuerdo no. 00335-92, ago.1992, AMDC
- 5) Tipo de productor, tenencia y uso de la tierra Tomo1, nov.1994, SECPLAN (Secretaría de Planificación, Coordinación y Presupuesto)
- 6) Folletos de CODEM, 2001, CODEM
- 7) Decreto Número 38-99, Congreso Nacional
- 8) Reglamento Urbanización y Lotificación, Plan regulador del desarrollo metropolitano, METROPLAN
- 9) Project Portfolio, feb.2001, WORLD BANK
- 10) Definición geométrica plataforma San Miguel Arcángel, 2001, TECNISA
- 11) Mapa de cobertura vegetal y uso actual de la tierra, hojas IJHI y IJFG, IGN
- 12) Mapa de suelos, Hojas IJHI y IJFG, IGN
- 13) Expedientes de Uso de Suelo Entregados Año 2001, Metroplan(AMDC)