

Figure B.4.1

Topography of the Target Area for Disaster Prevention

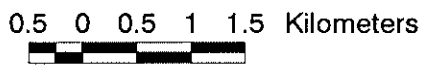
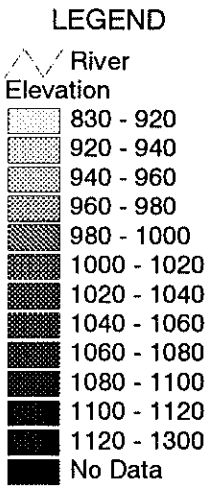
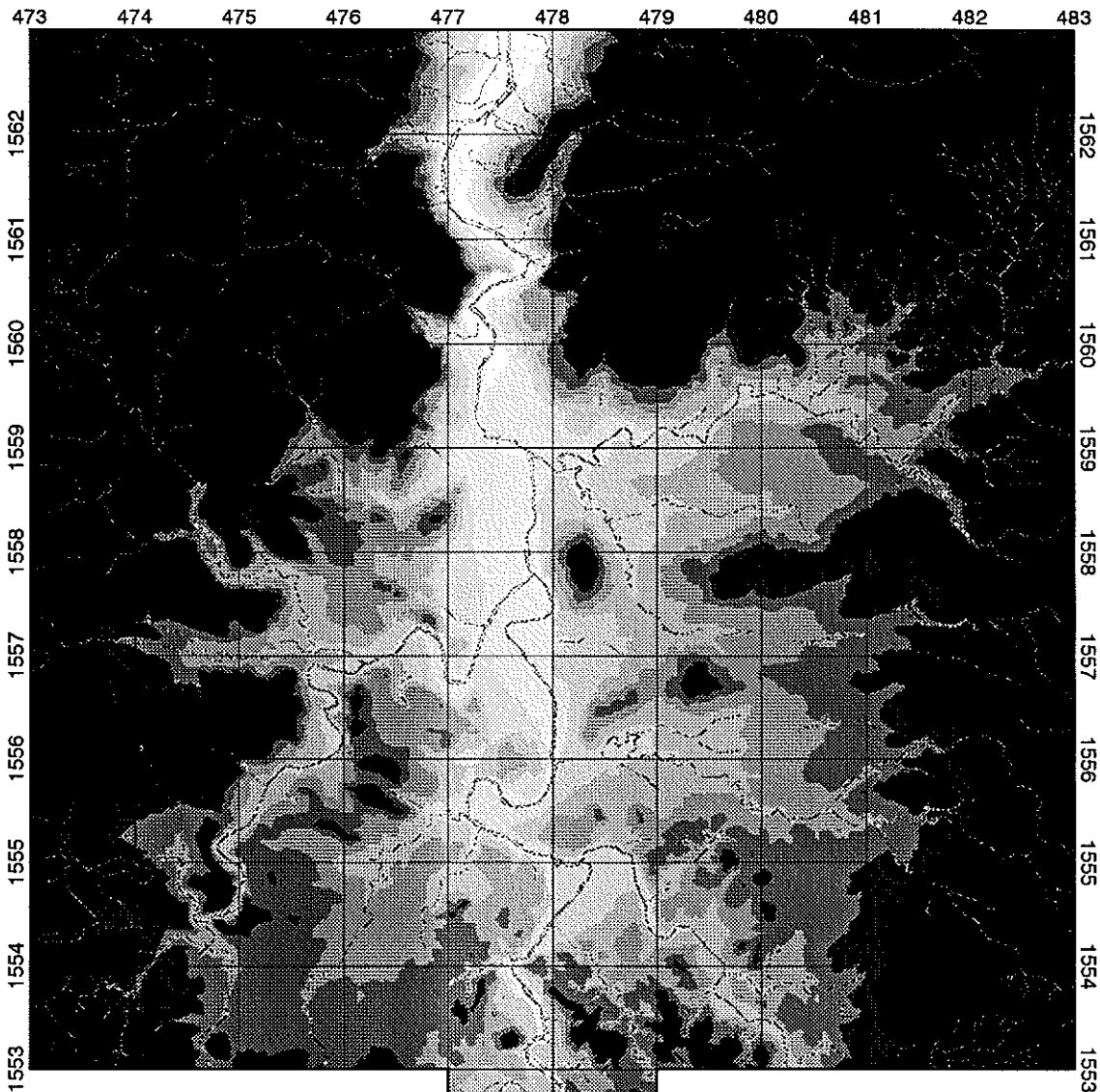


Figure B.4.2

Elevation Map of the Target Area for Disaster Prevention

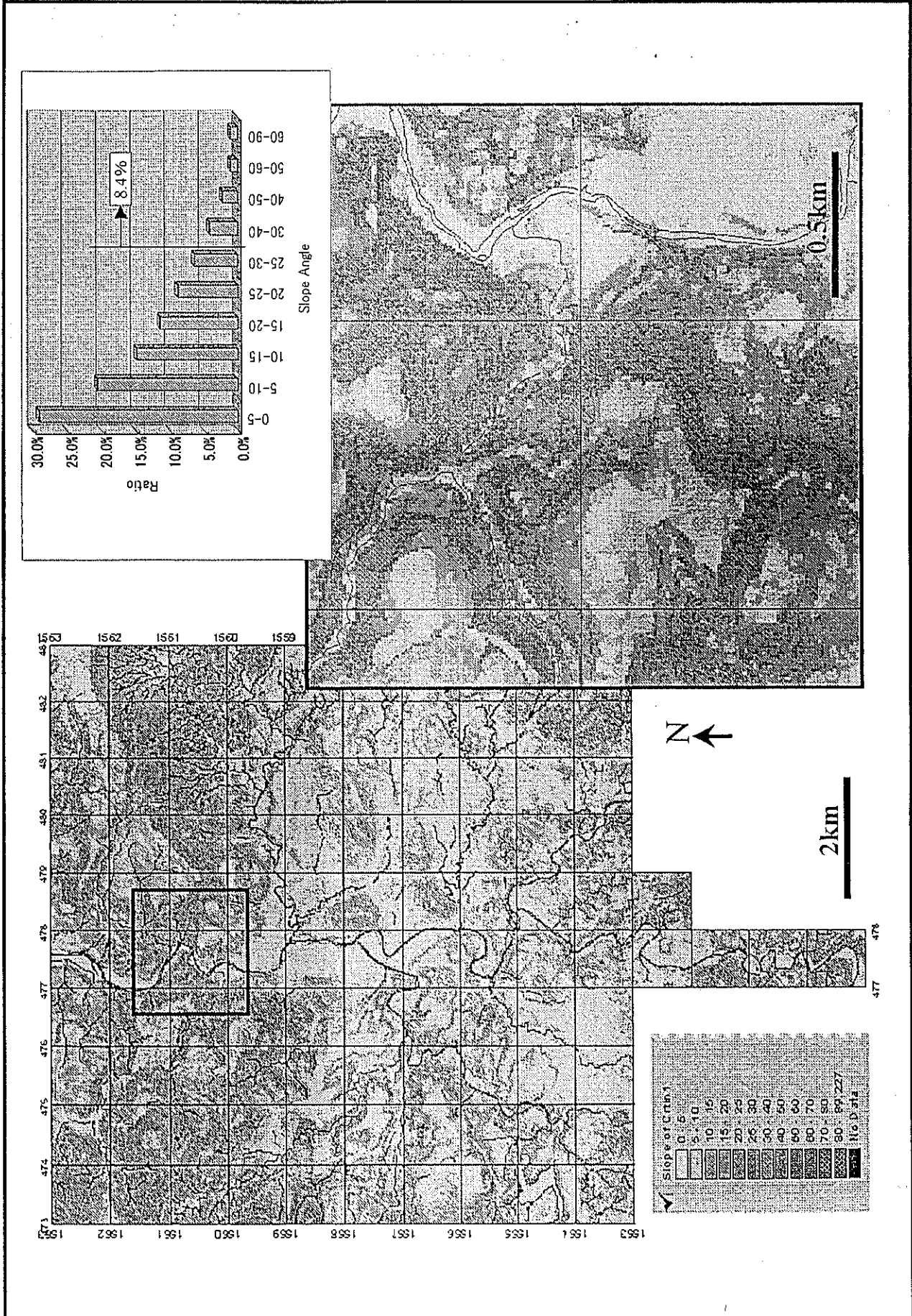


Figure B.4.3

Slope Angle Distribution of The Target Area for Disaster Prevention

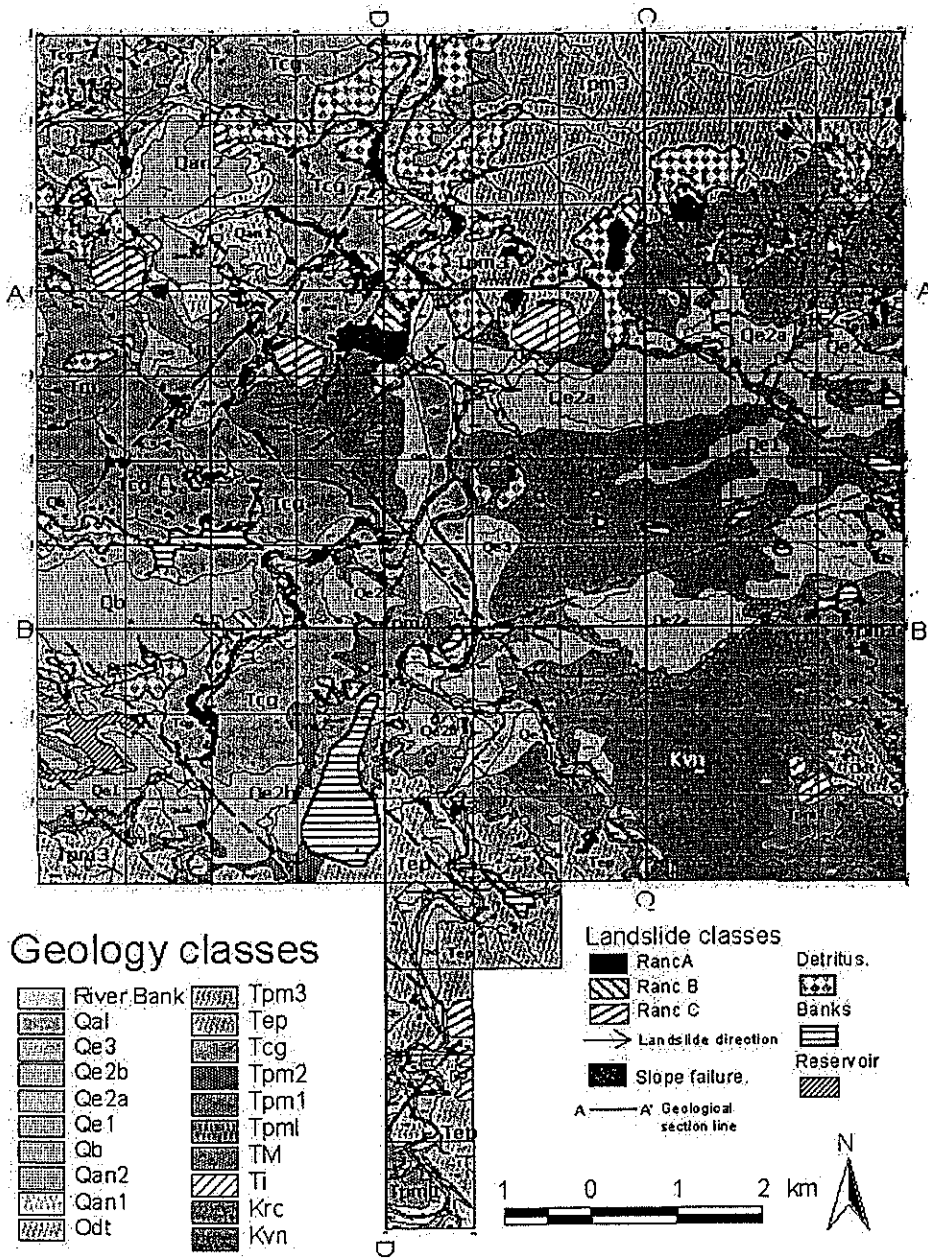
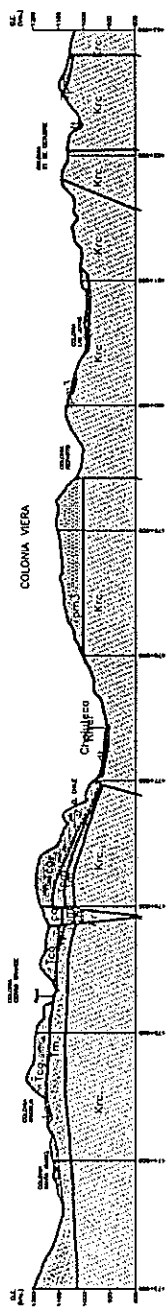


Figure B.5.1

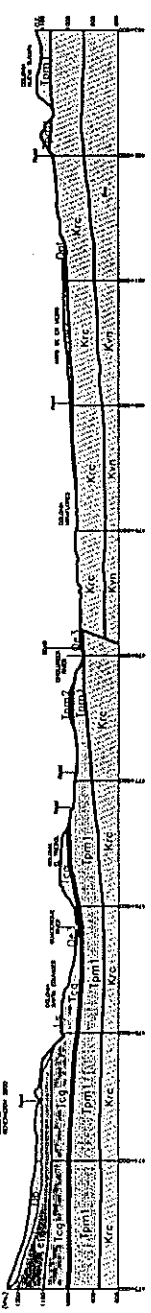
Geological Map of the Target Area

# GEOLOGICAL SECTION IN TARGET AREA (TEGUCIGALPA)

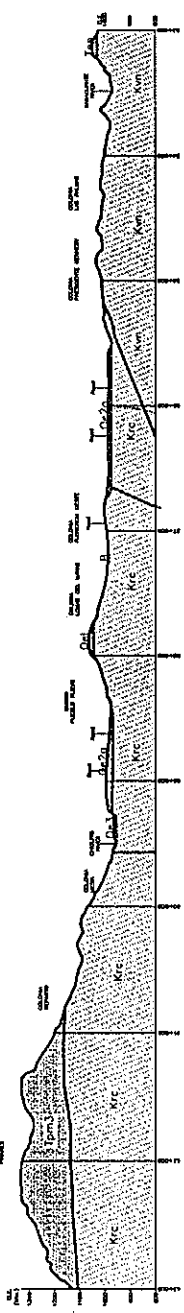
LATITUDE 60  
SECTION A-A'  
SC H. 1 - 10,000  
SC V. 1 - 5,000



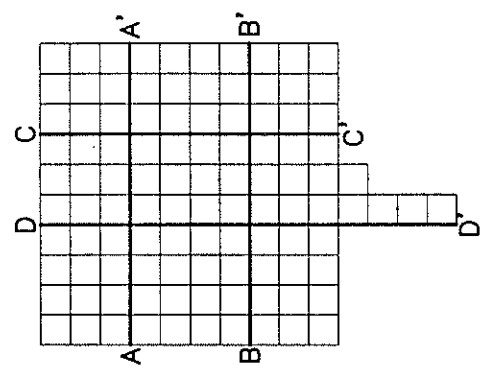
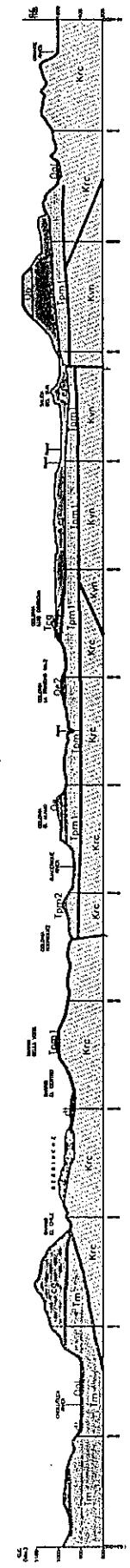
LATITUDE 58  
SECTION B-B'  
SC H. 1 - 10,000  
SC V. 1 - 5,000



LONGITUD 80  
SECTION C-C'  
SC H. 1 - 10,000  
SC V. 1 - 5,000



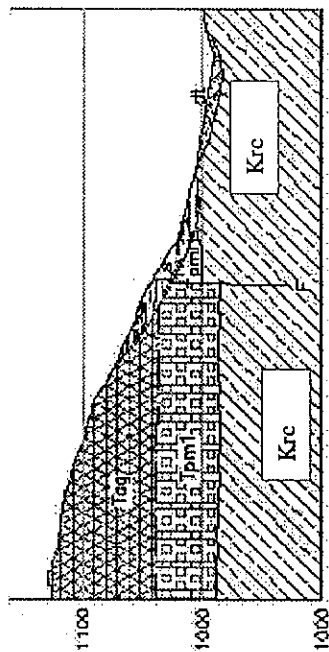
LONGITUD 77  
SECTION D-D'  
SC H. 1 - 10,000  
SC V. 1 - 5,000



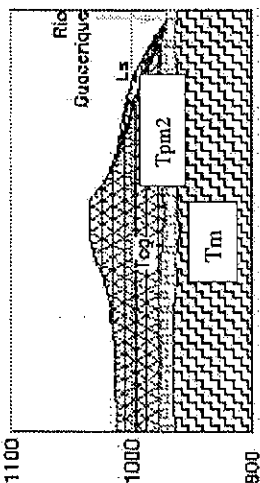
THE SECTION LINES LOCATION

Figure B.5.2

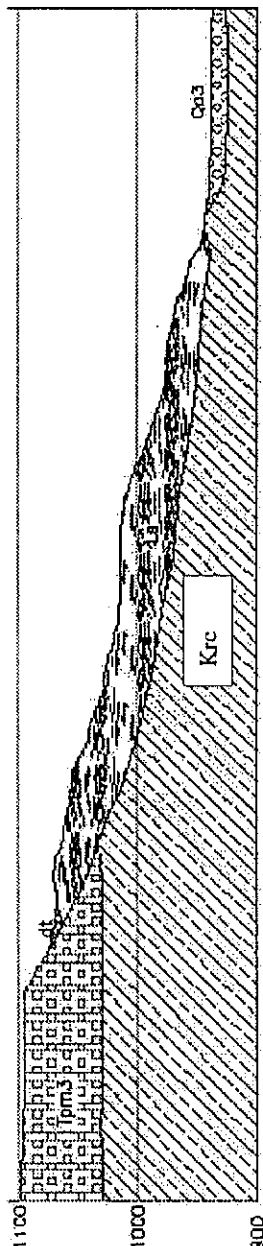
Geological Section



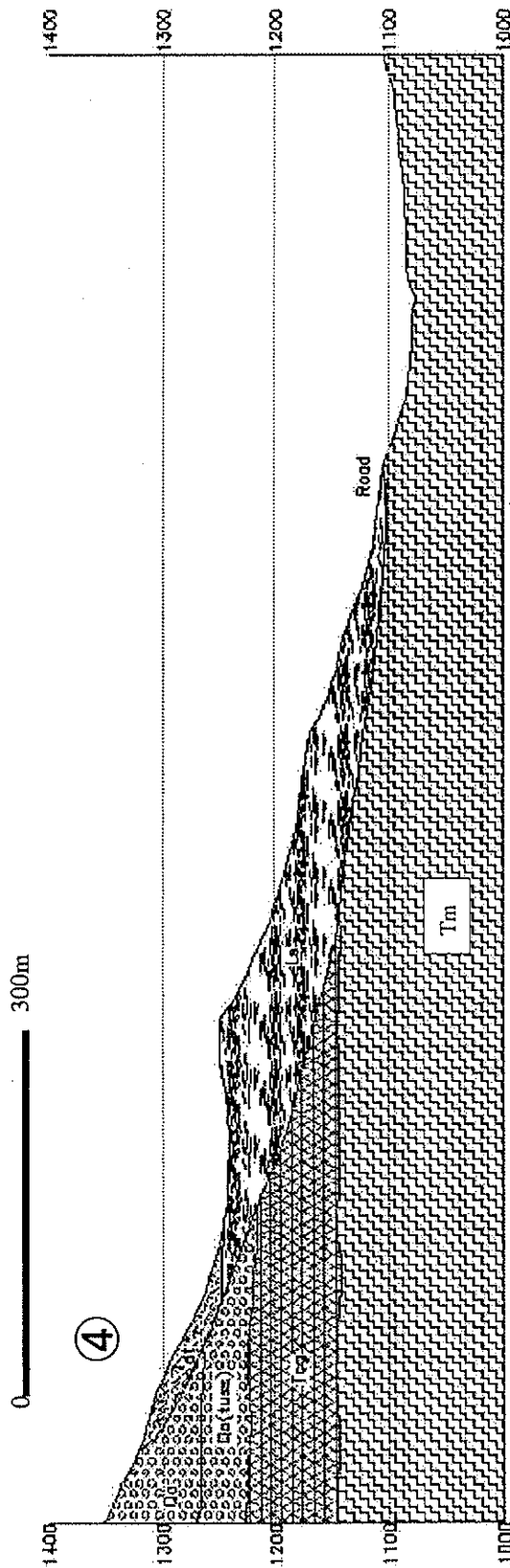
②



①



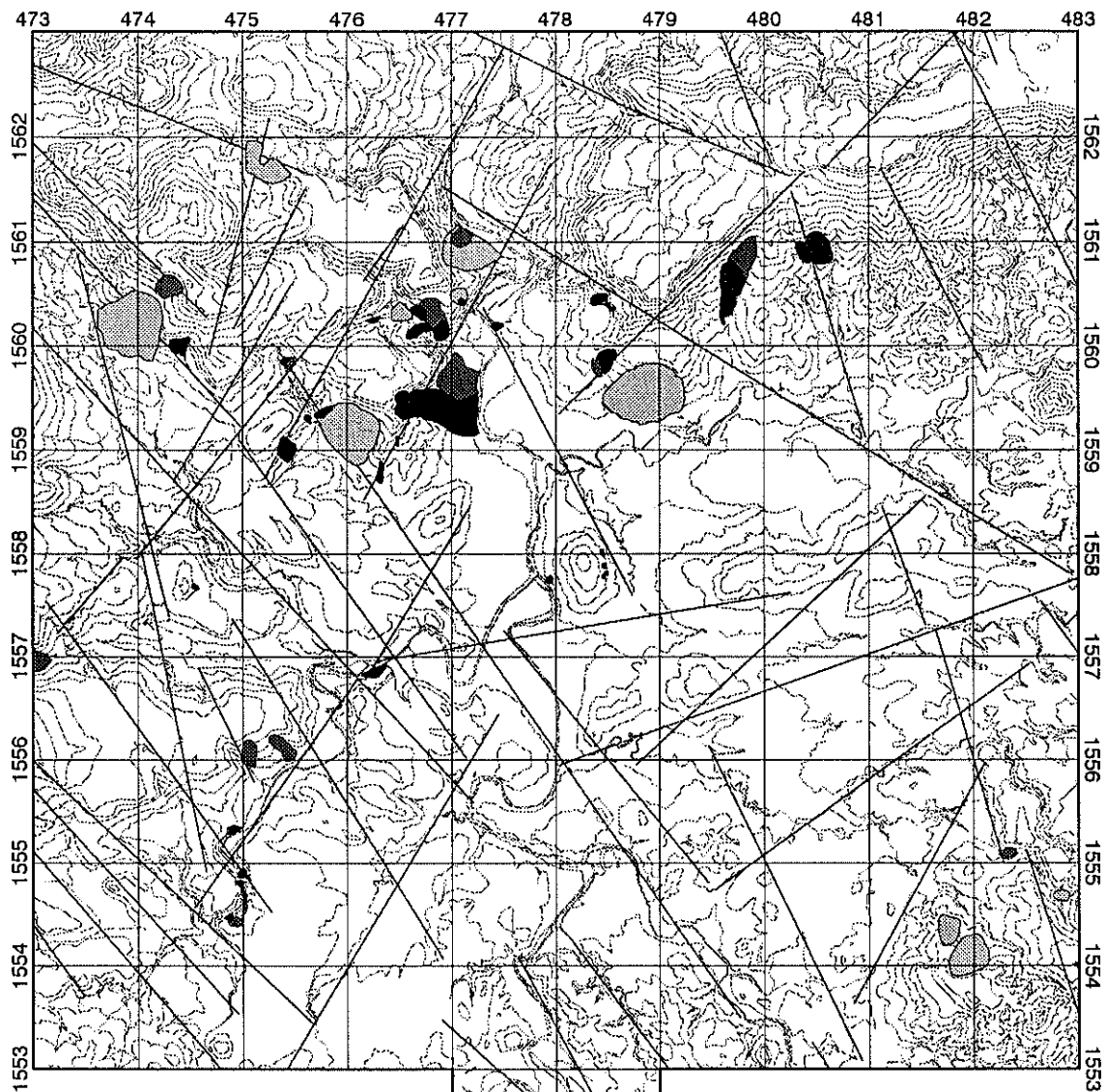
③









④

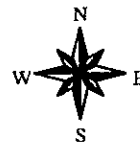
Figure B.6.2

Geological Structures of Landslide




**LEGEND**

-  Landslide rank A
-  Landslide rank B
-  Landslide rank C
-  Linearment
-  River
-  25m contour line



0.5 0 0.5 1 1.5 Kilometers



477 478

**Figure B.6.3**

**Distribution of Landslide Masses**

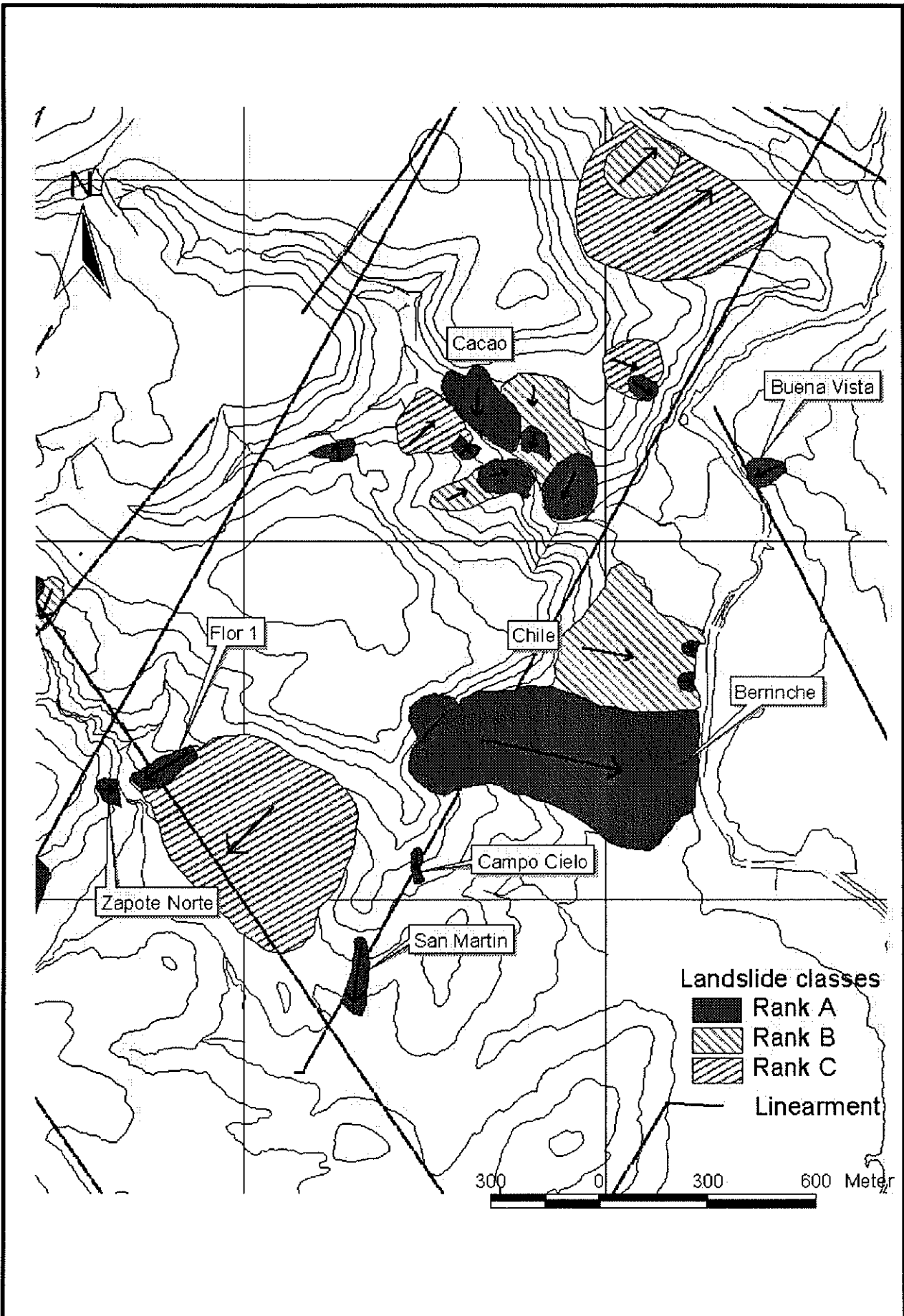
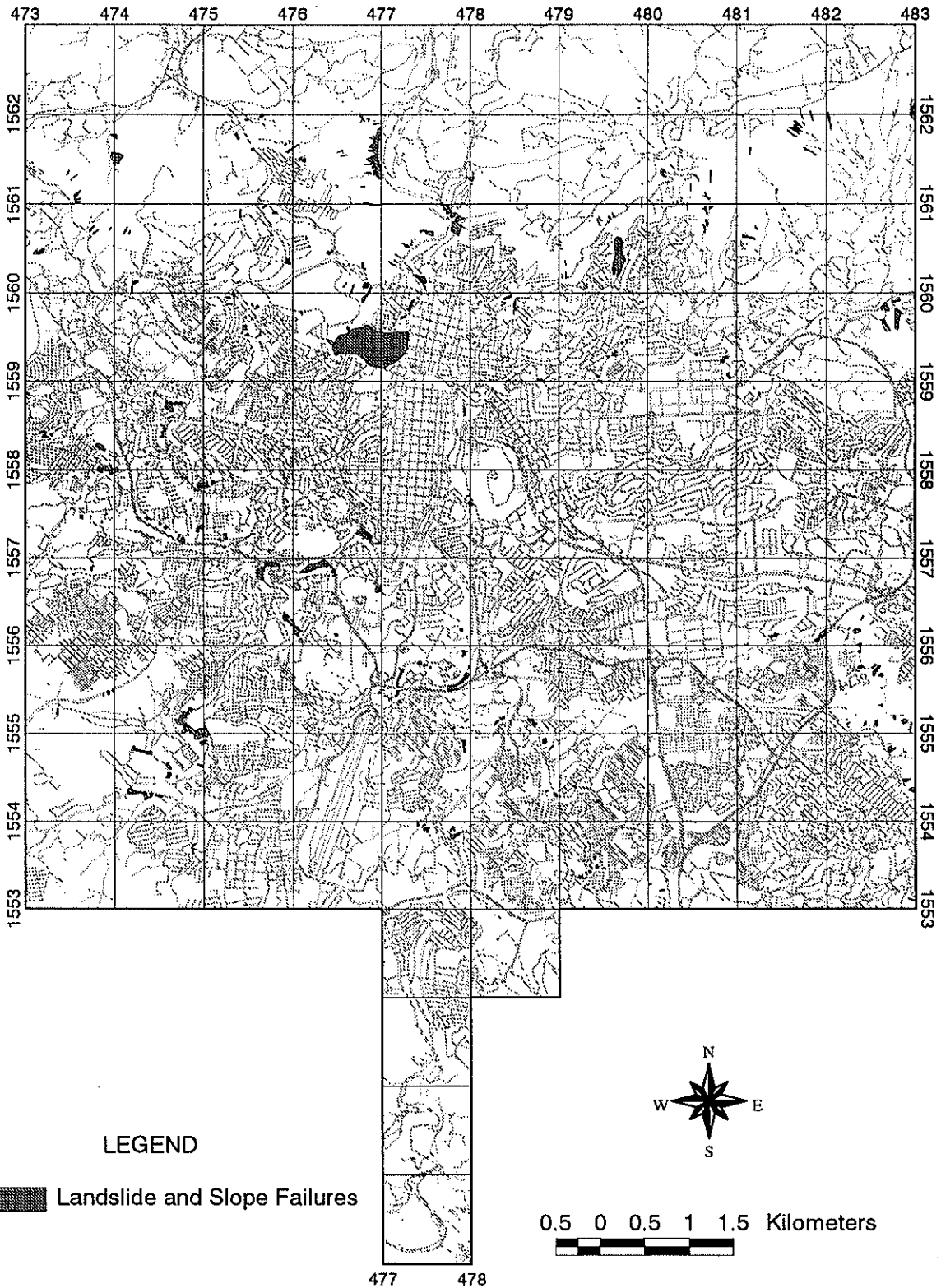


Figure B.6.4

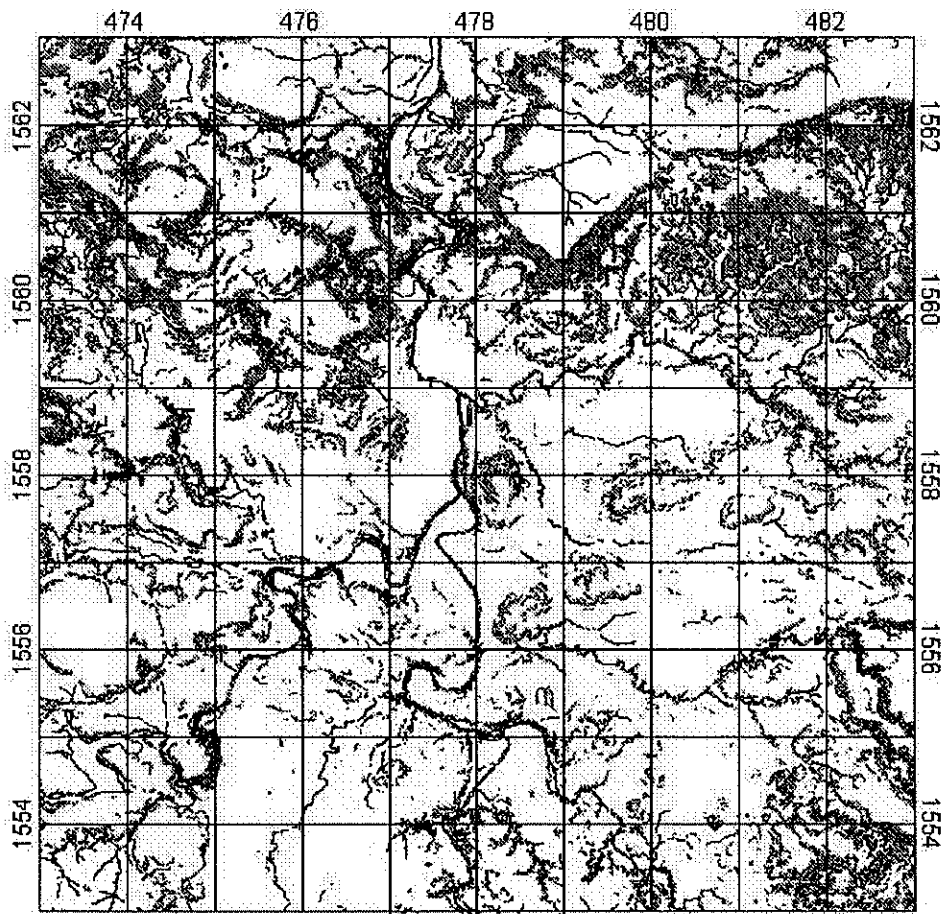
Distribution of Landslide Masses (Northern Part of the Area)




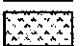


**Figure B.6.6**

**Location Map of Landslide and Slope Failures  
During the Hurricane Mitch**

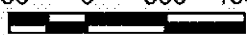


**Existing Slope\_failure location**

-  Slope Failures
-  Deposition



900 0 900 1800 Meters



**Slope Failure Dangerous Area**




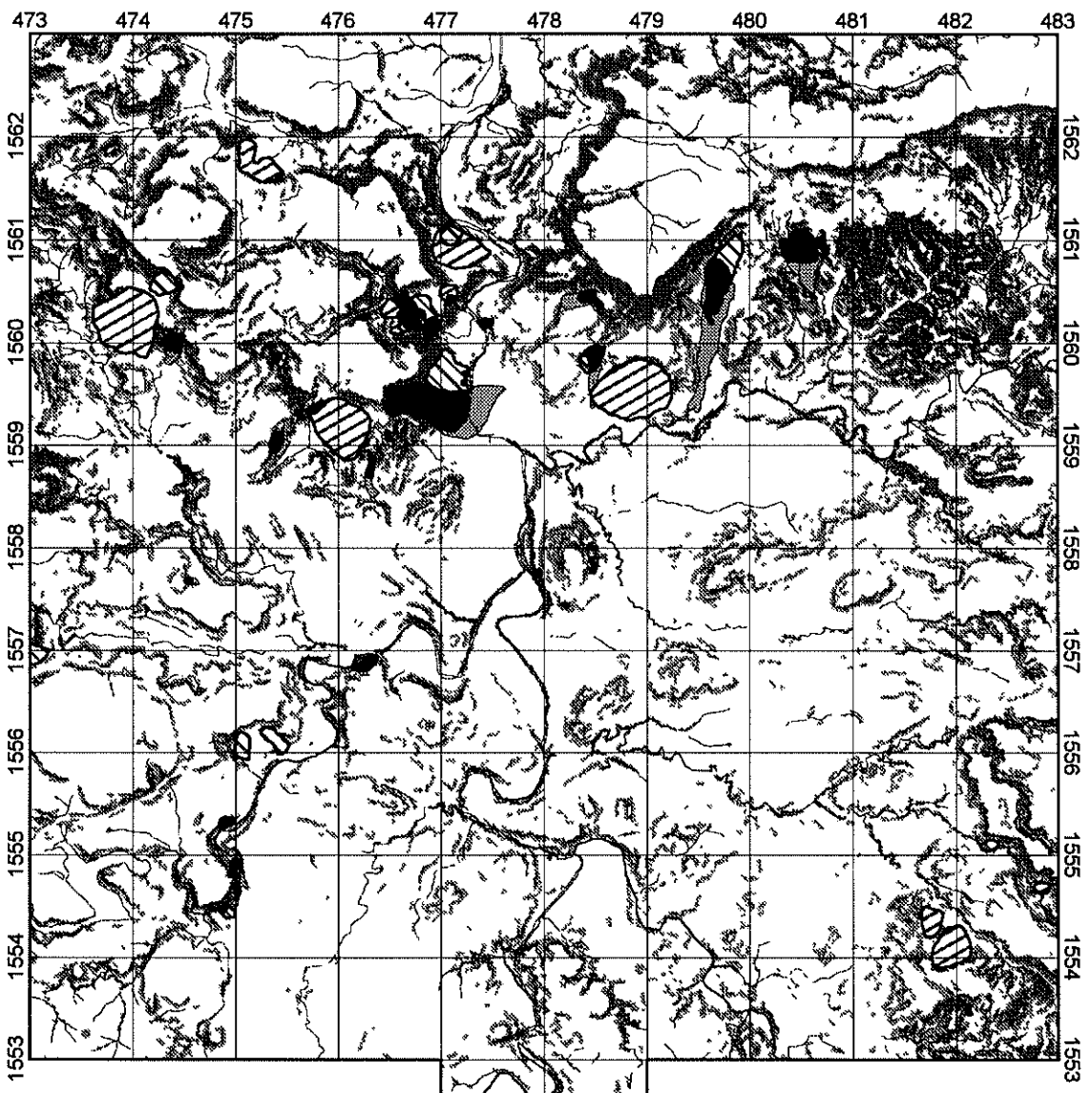







-  Very Dangerous Slope
-  Dangerous Slope
-  Affected Area

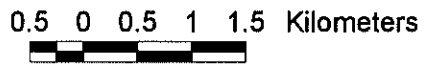
Figure B.6.16

Slope Failures Analysis Map



**LEGEND**

-  Rivers
- Landslide**
  -  Rank A
  -  Rank B
  -  Rank C
  -  Affected Area by Rank A Landslide
- Slope Failure**
  -  Dangerous Slope
  -  Affected Area



477 478

**Figure B.6.17**

**Hazard Map of Landslide and Slope Failures**

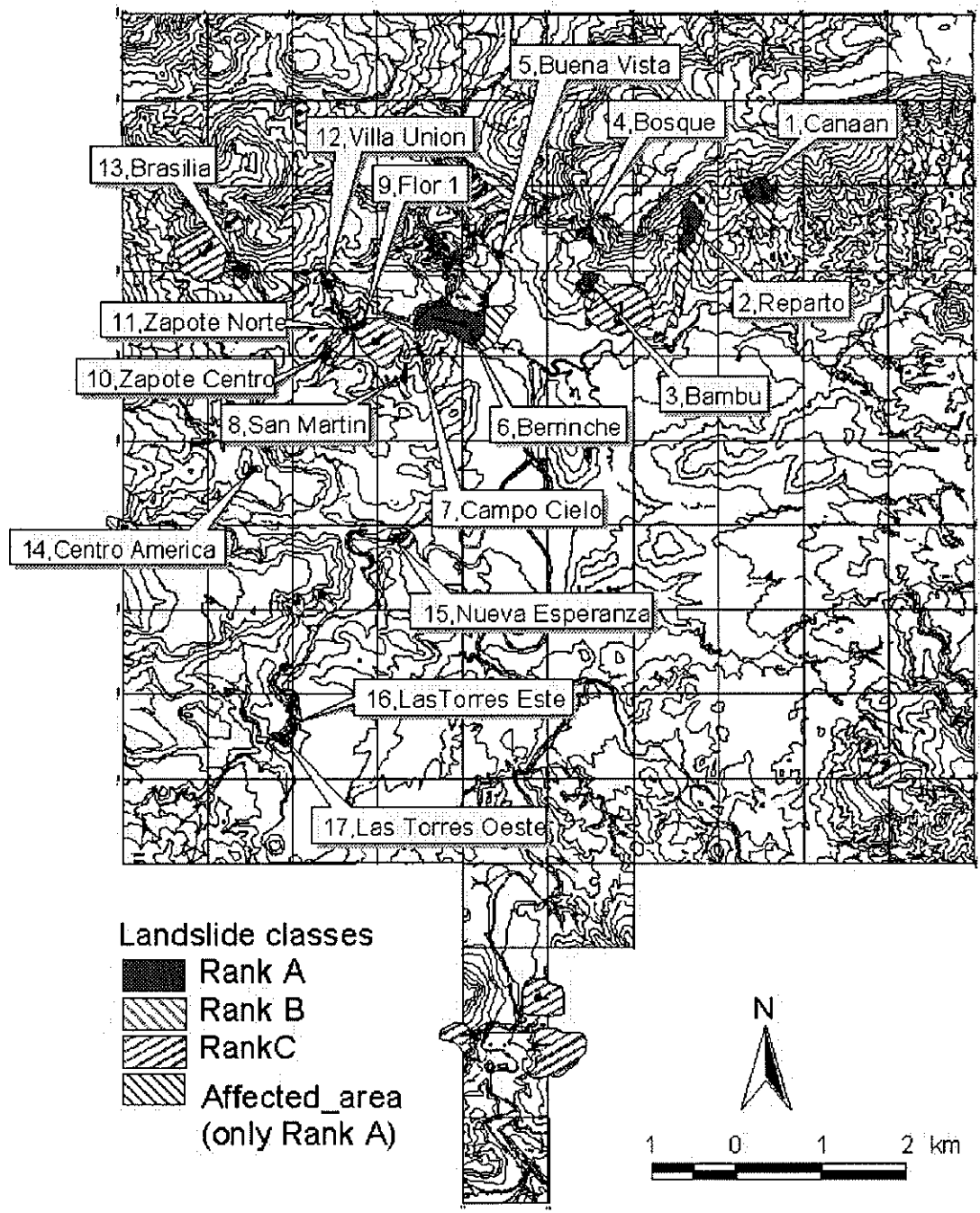


Figure B.6.18

Location Map of Rank A landslides