

Figure 4.28 (5)

Structural Code Application (5/5)

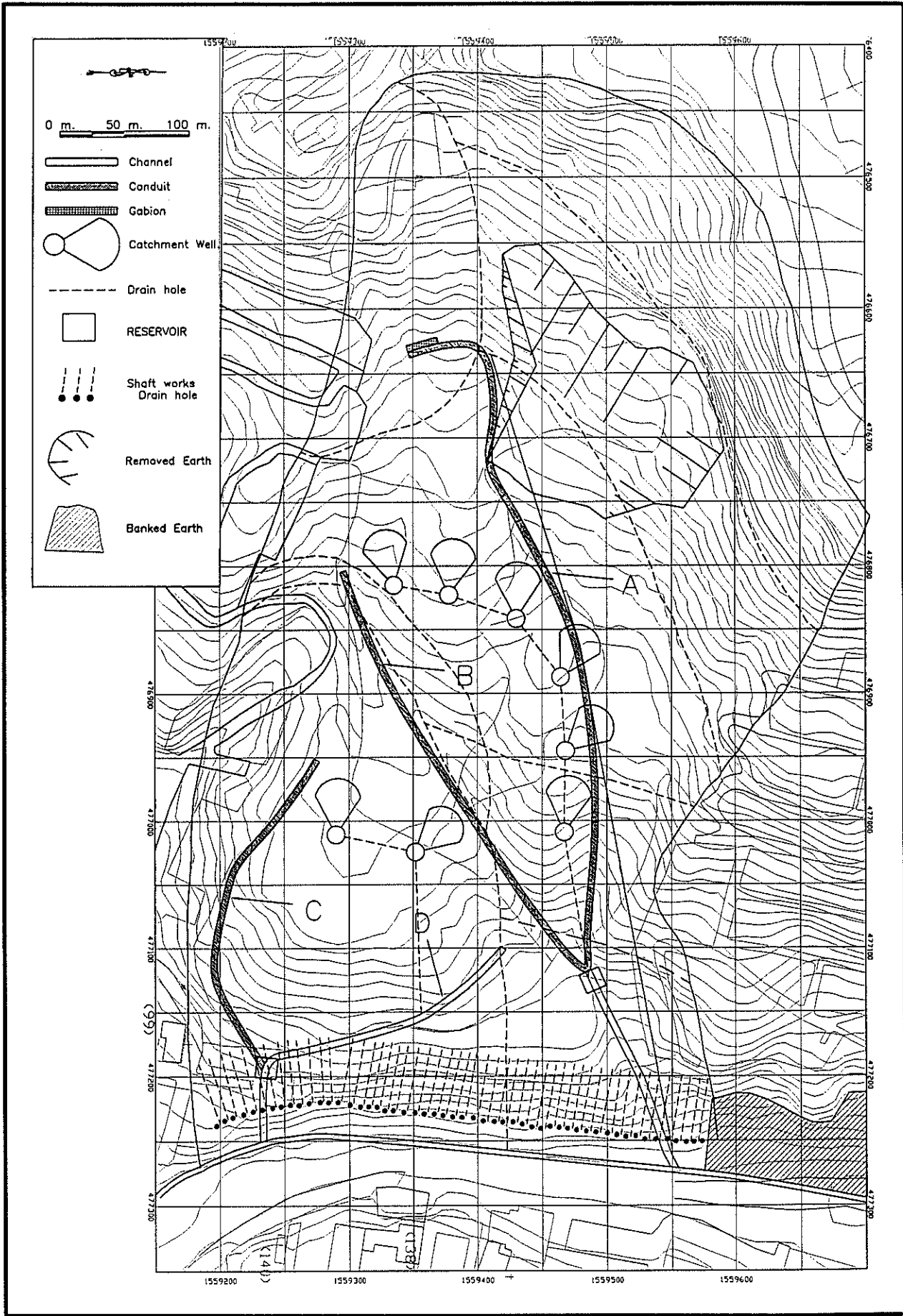


Figure 4.29

Proposed Landslide Prevention Measures in Berrinche

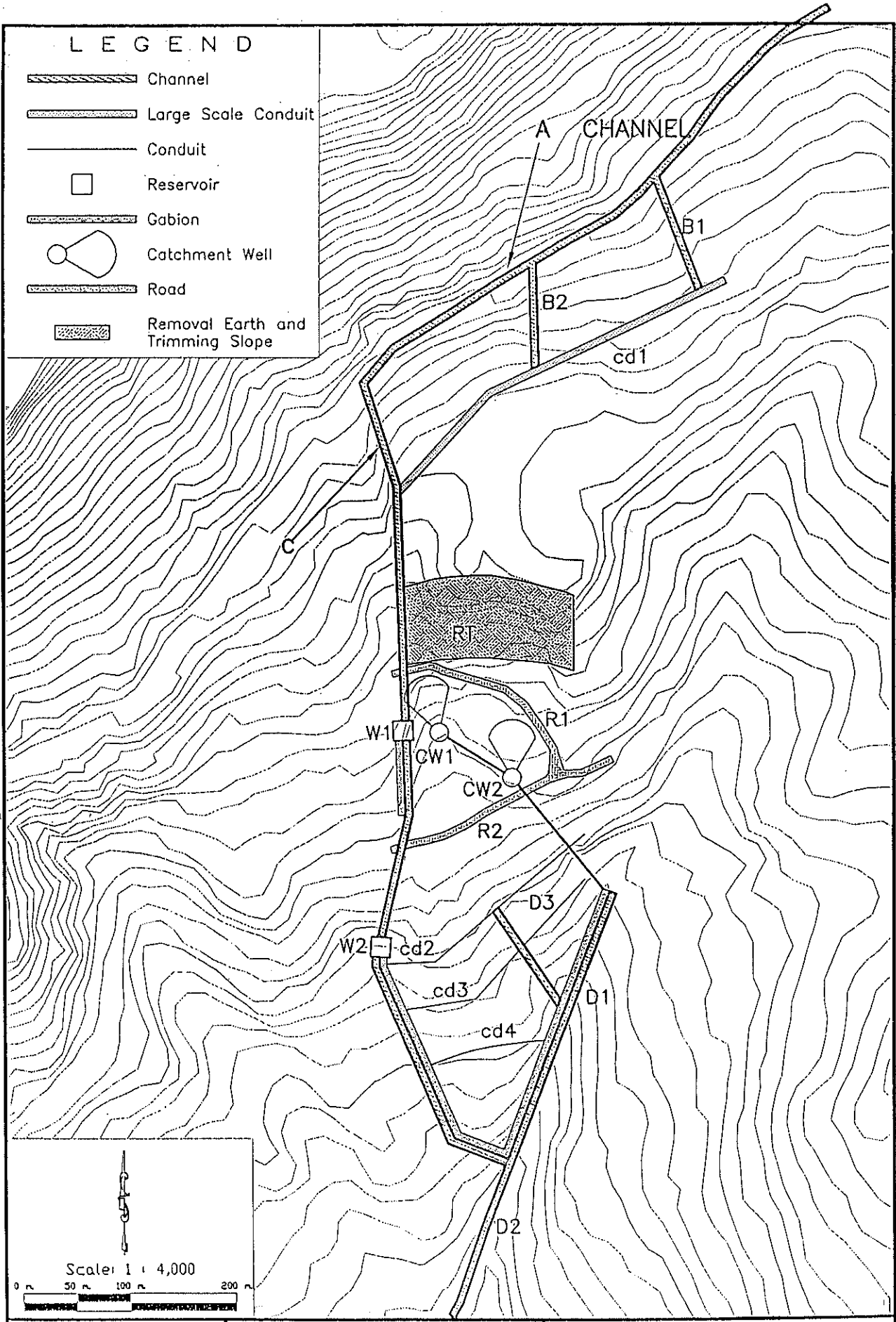


Figure 4.30

Proposed Landslide Prevention Measures in Reparto

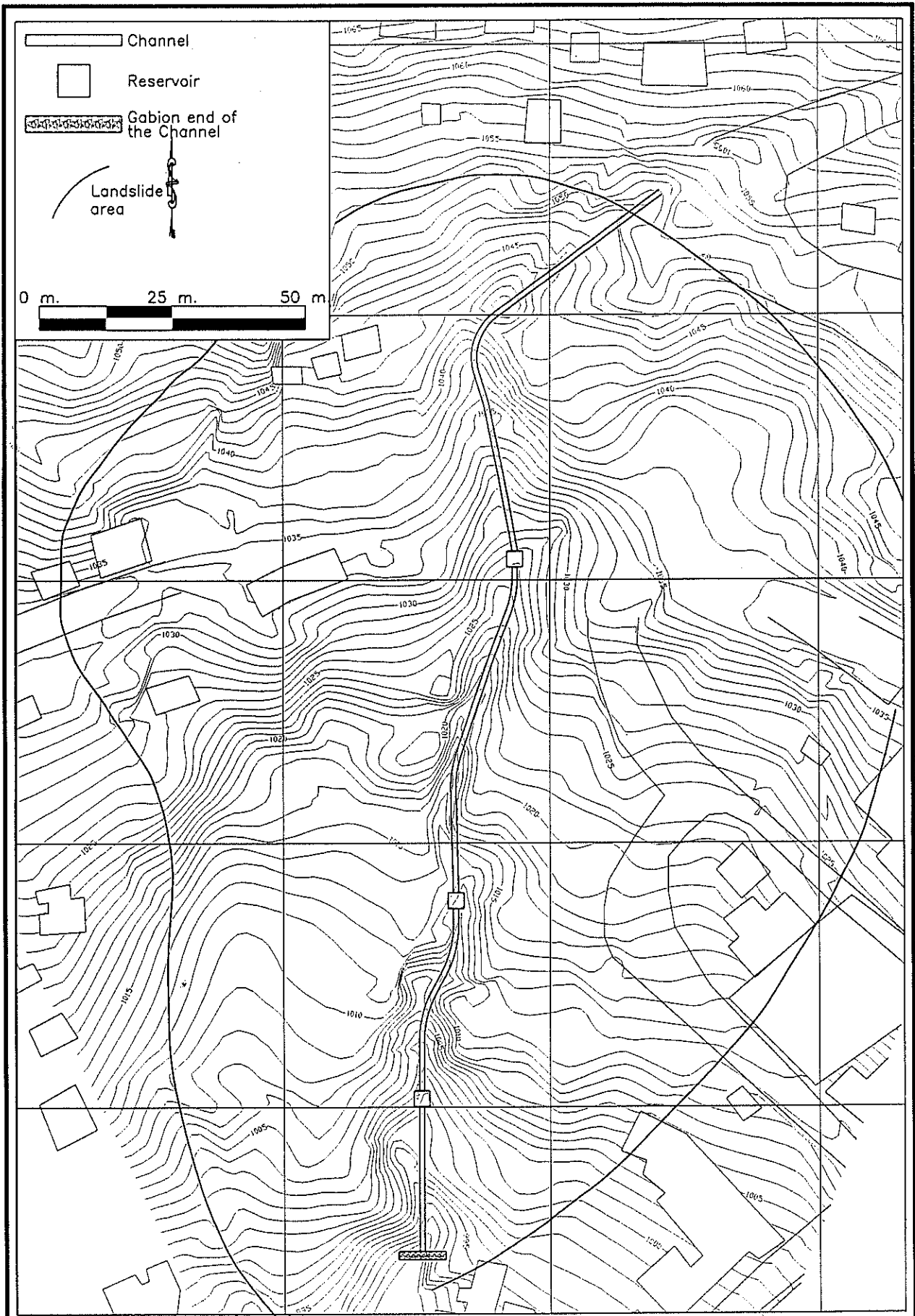


Figure 4.31

Proposed Landslide Prevention Measures in Bambu

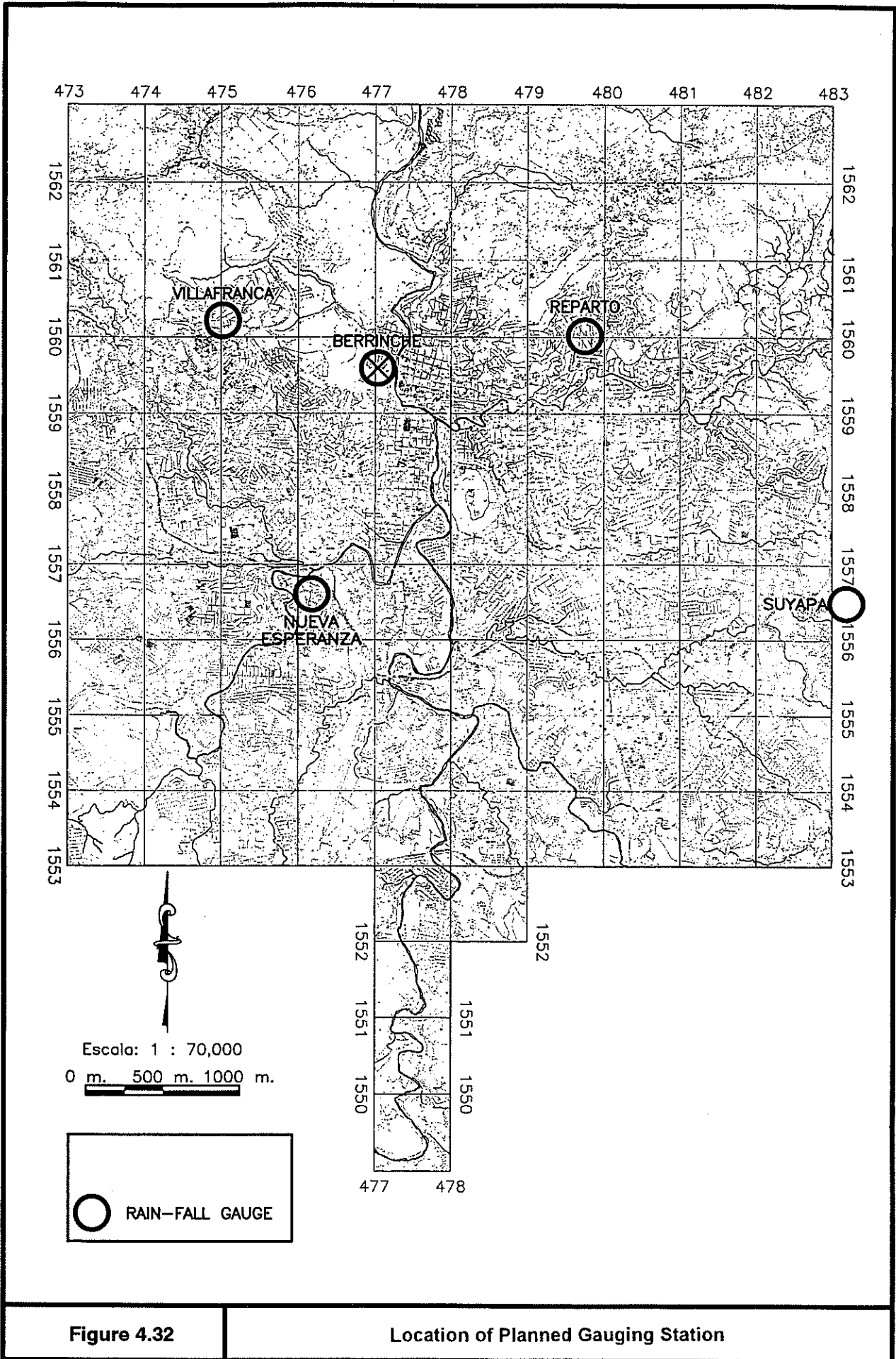


Figure 4.32

Location of Planned Gauging Station

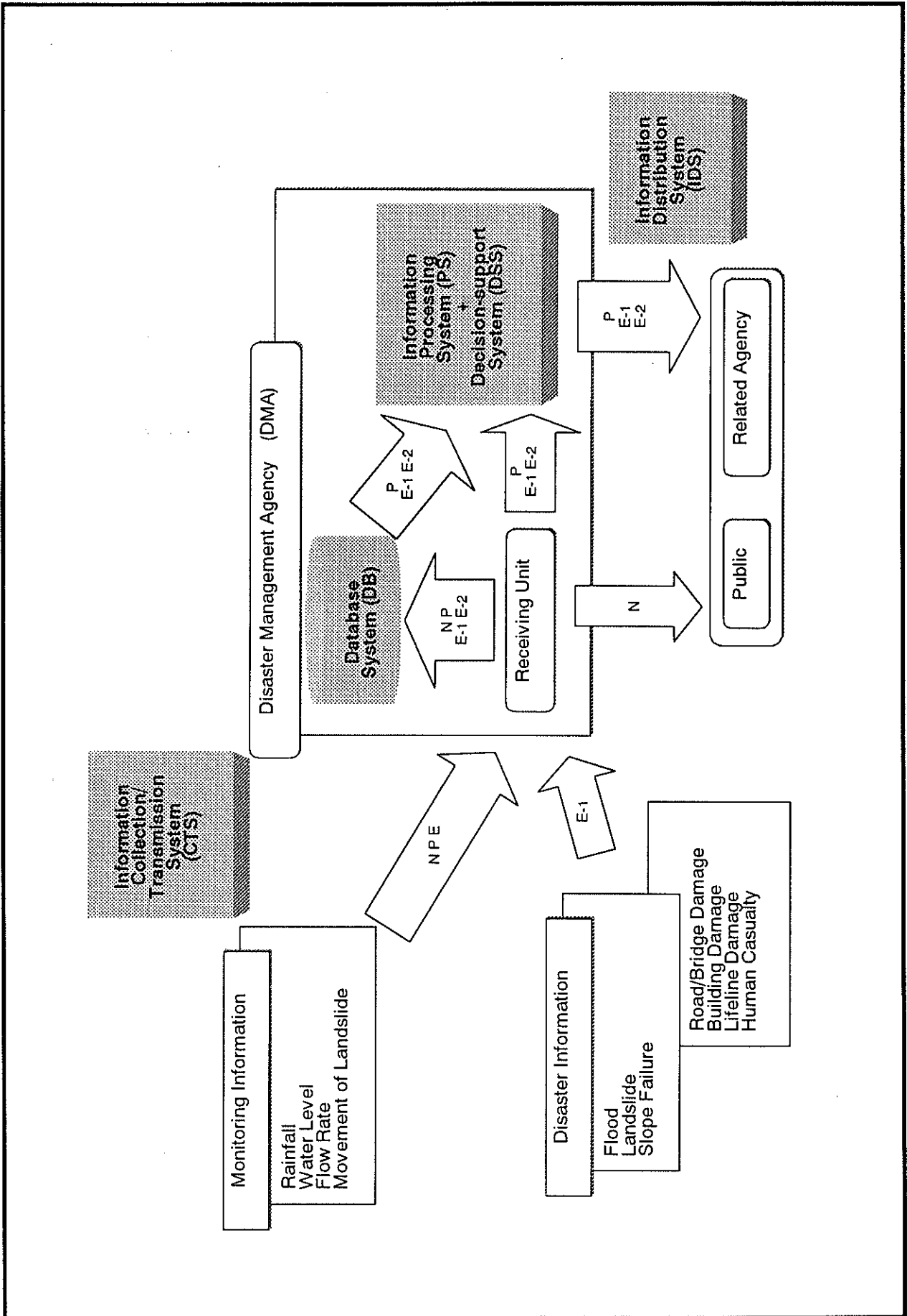


Figure 4.33

Flow of Information

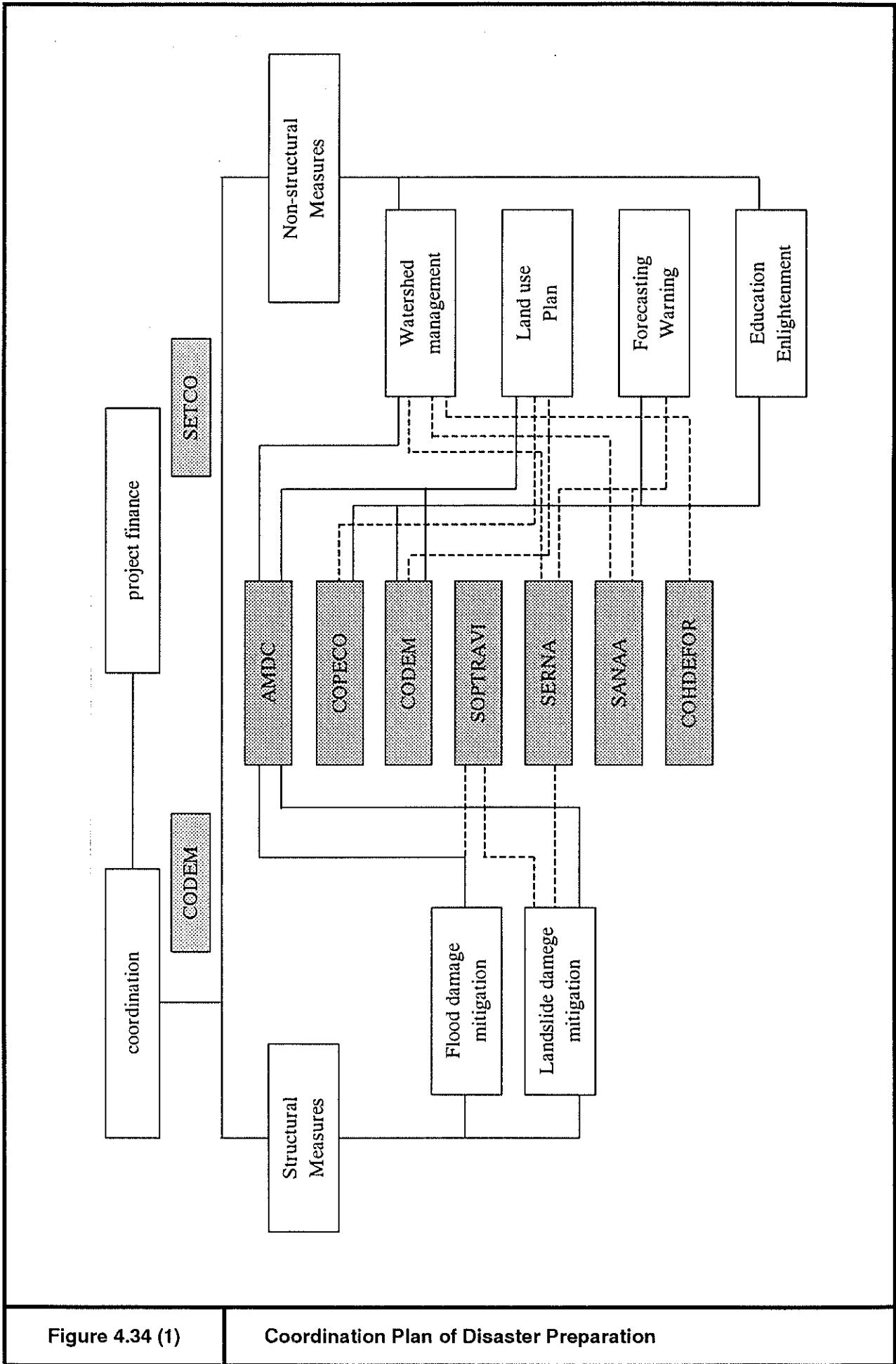


Figure 4.34 (1)

Coordination Plan of Disaster Preparation

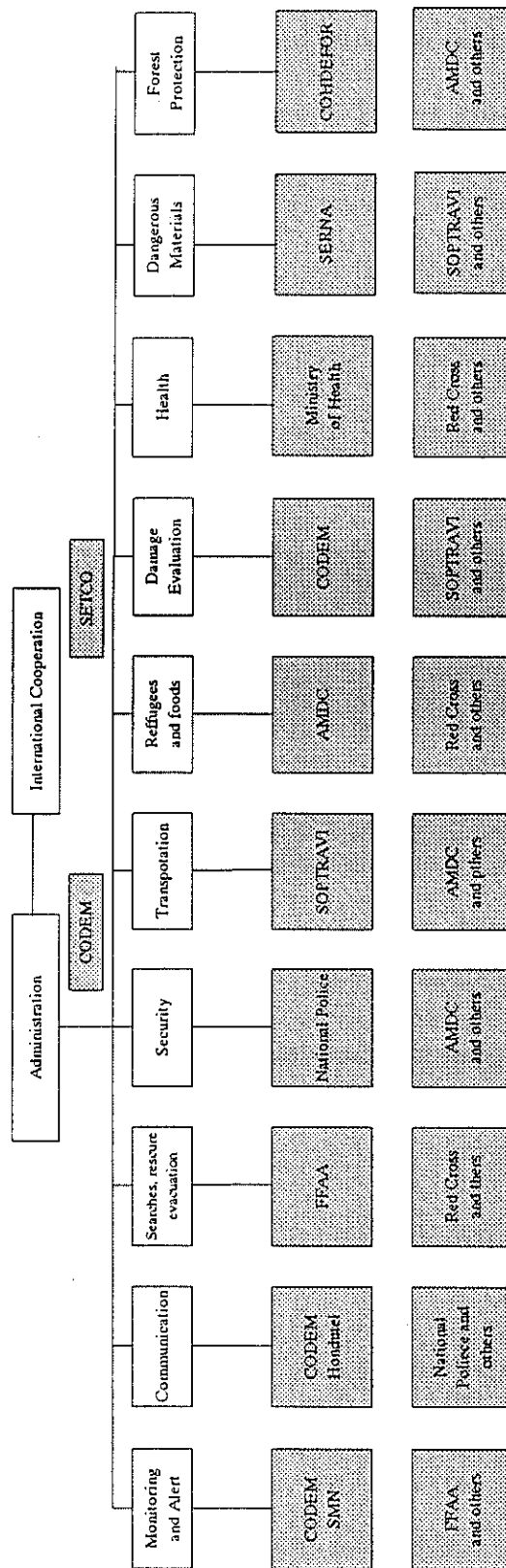


Figure 4.34 (2)

Coordination Plan of Emergency Action Plan

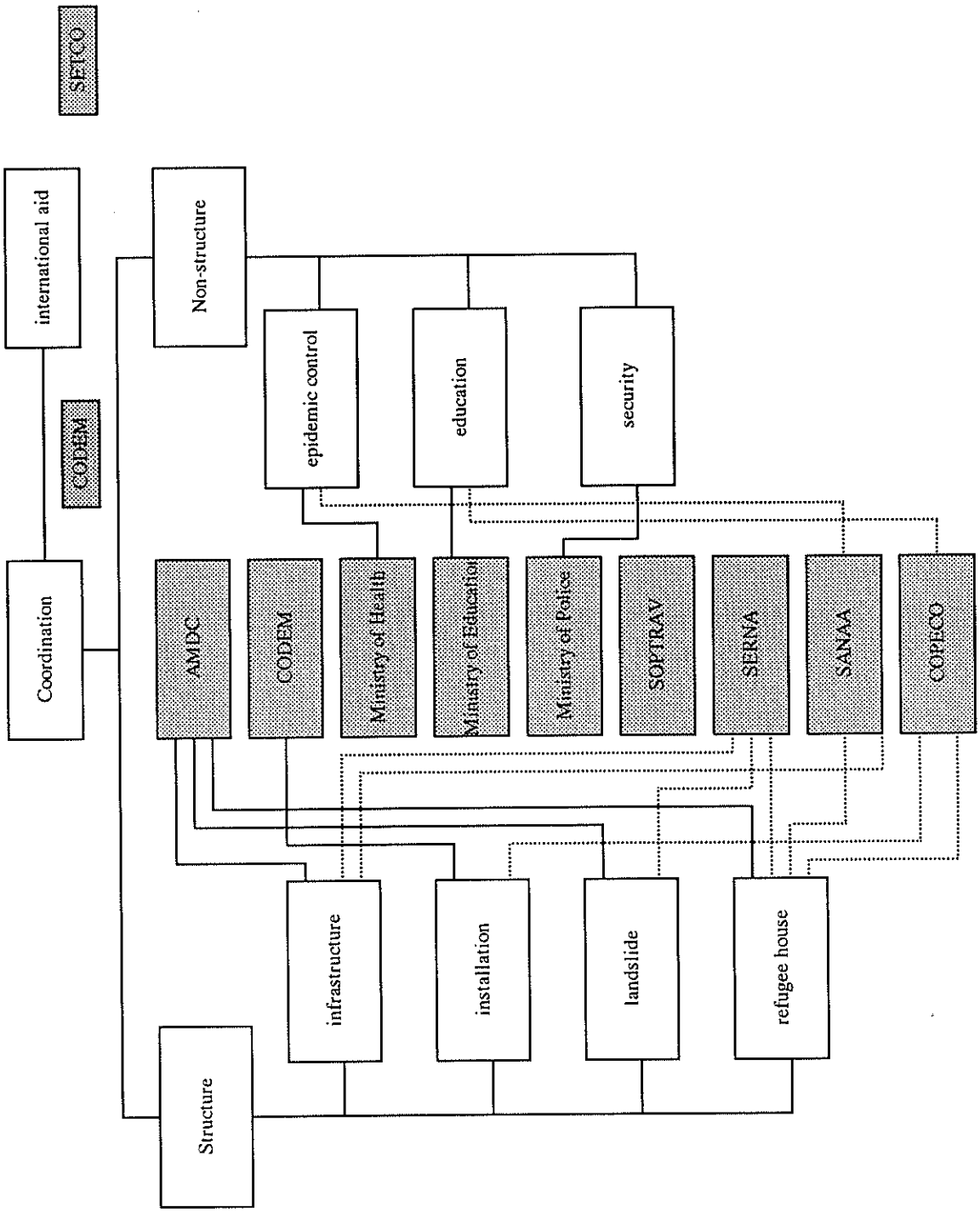


Figure 4.34 (3)

Coordination Plan of Disaster Rehabilitation

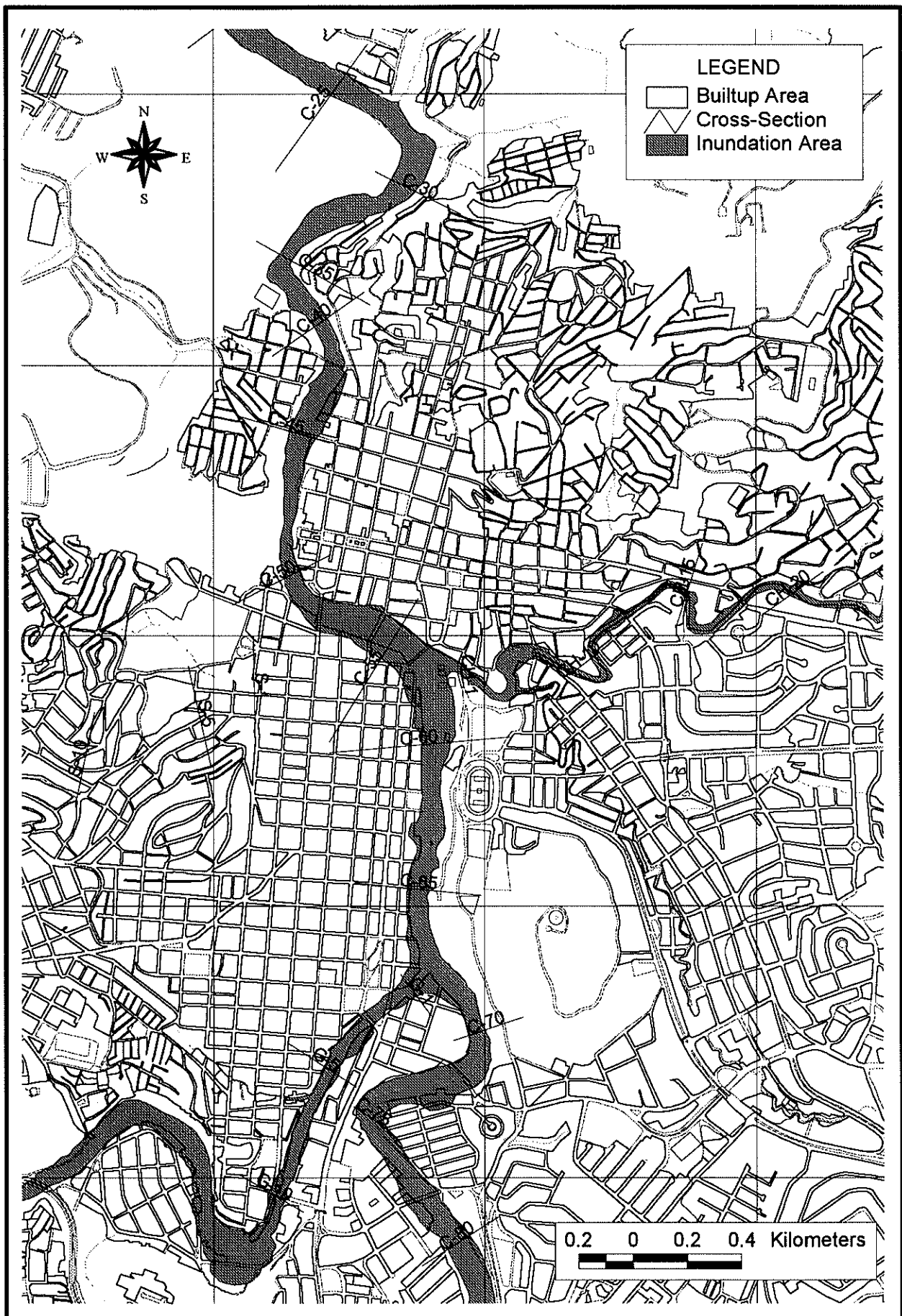


Figure 4.35

Inundation Area by 15-year Flood with Excavation

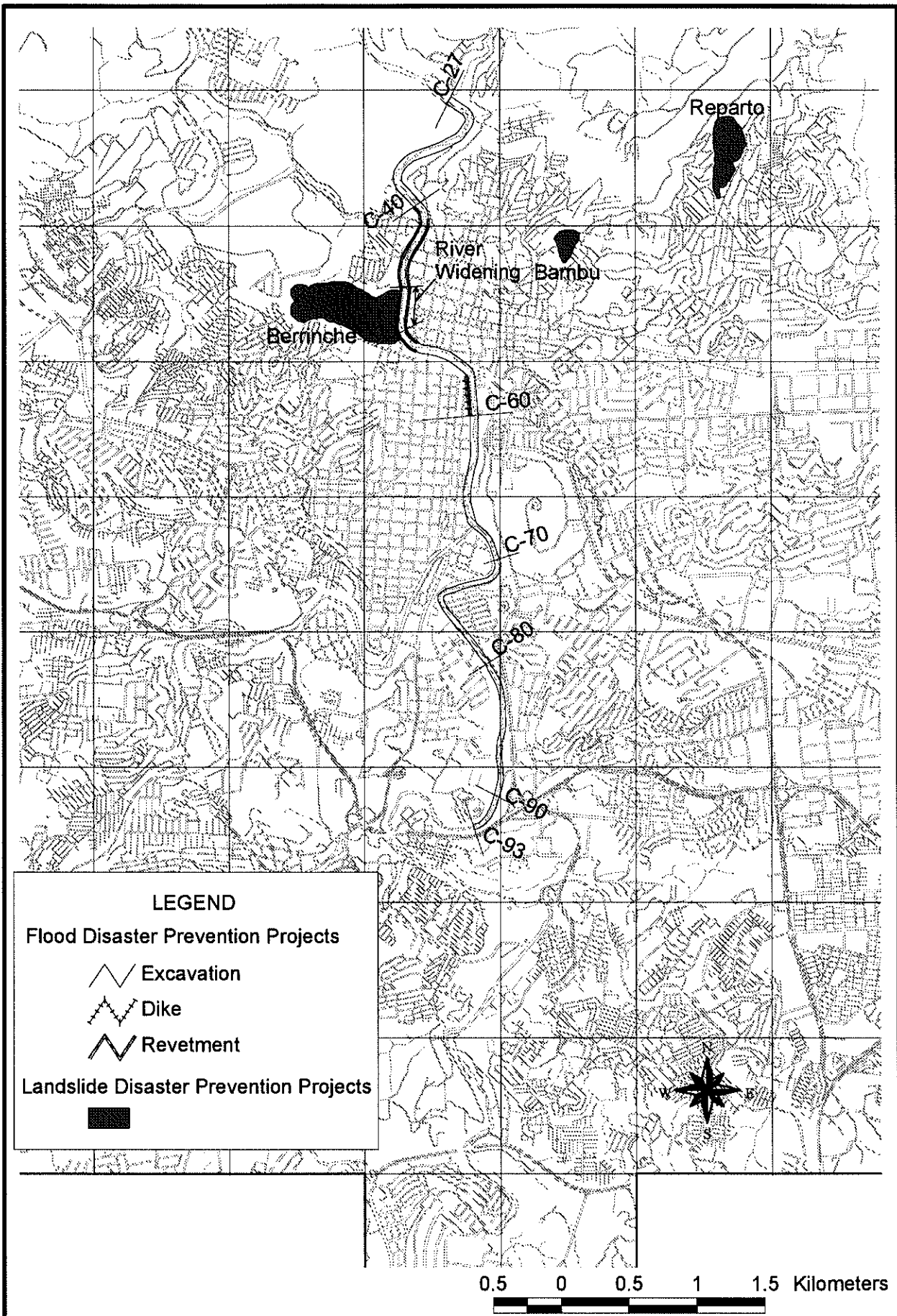


Figure 6.1 **Locations of Priority Projects (Structural Measures)**

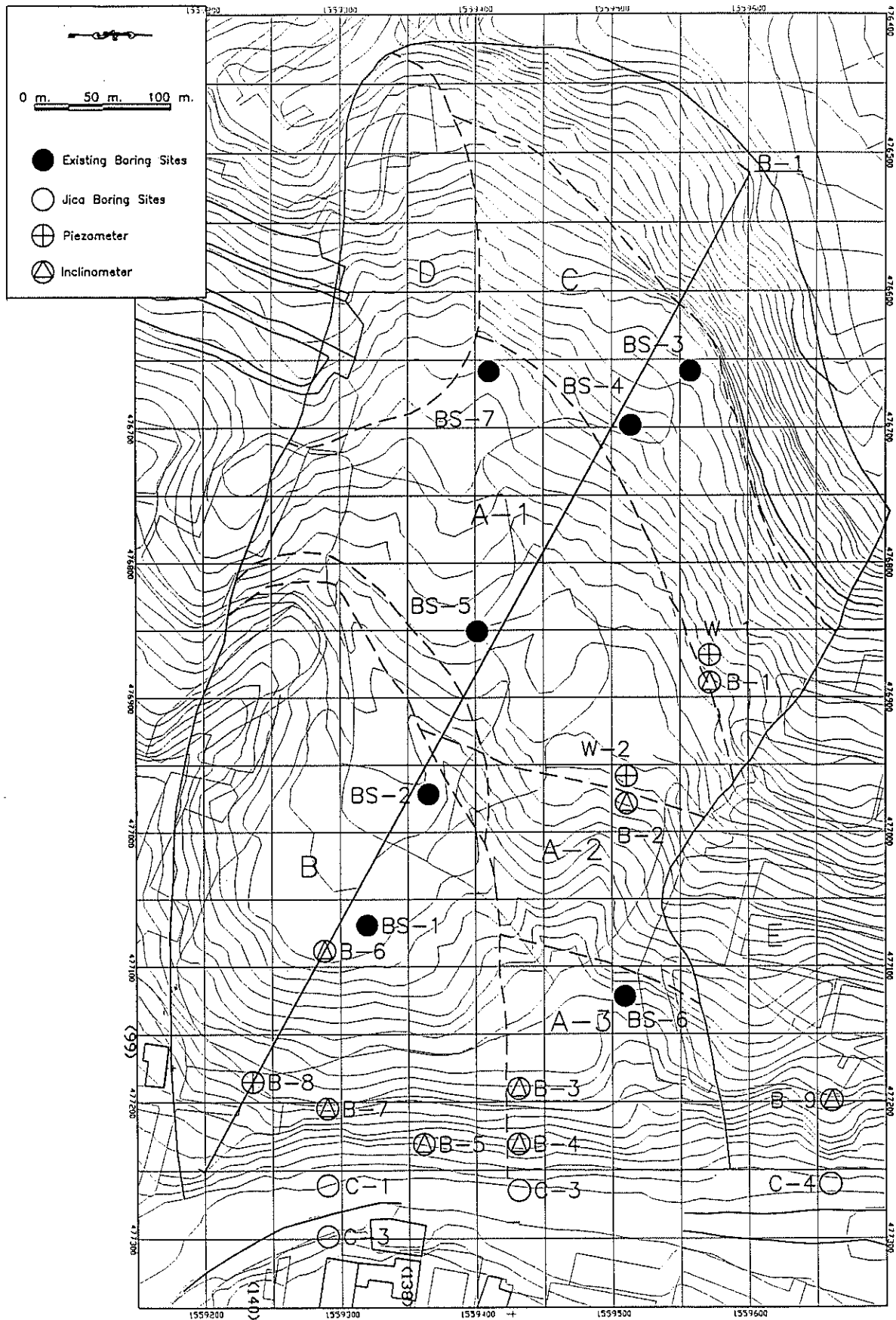


Figure 6.2 (1)

Location Map of Boring (Berrinche)

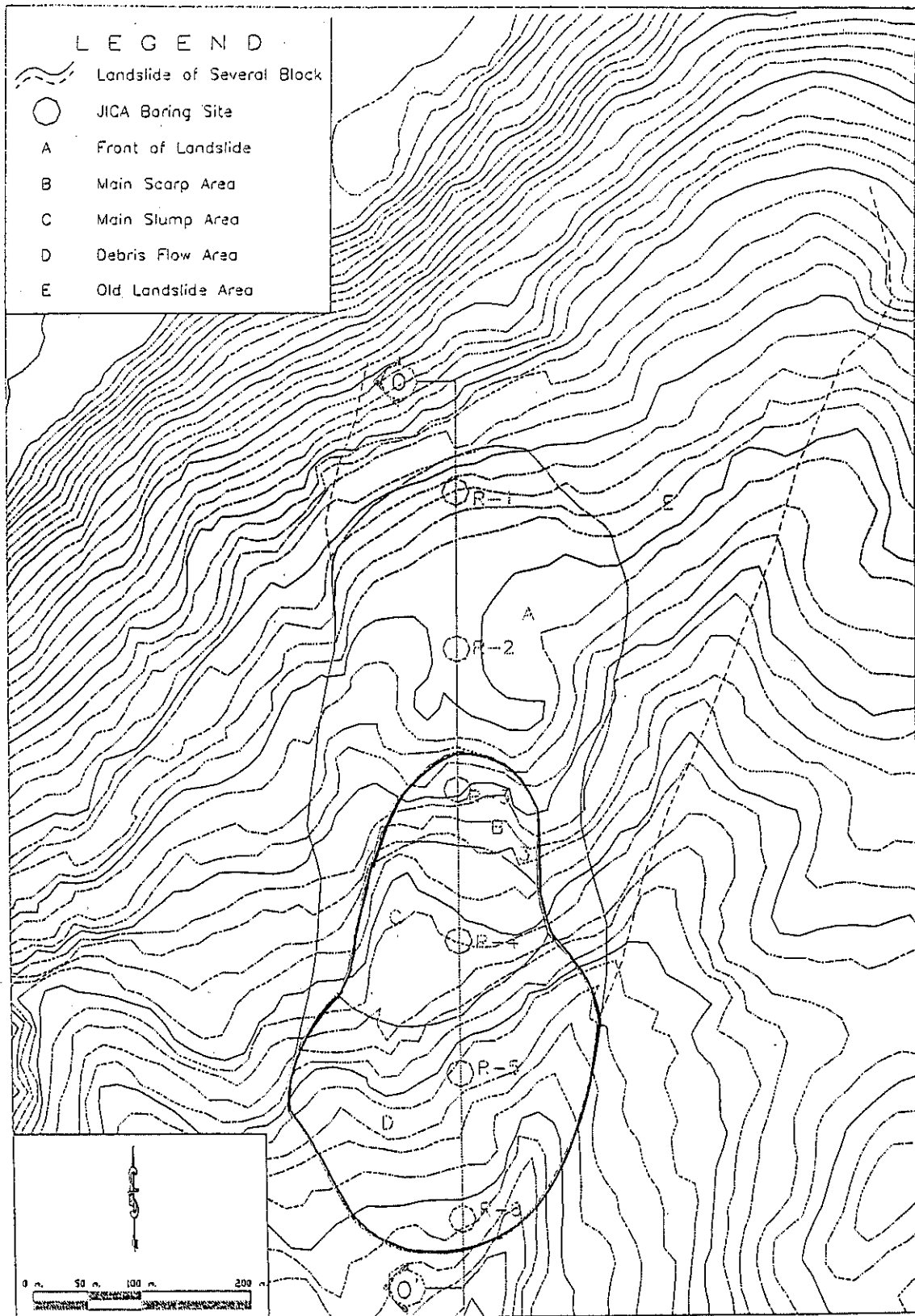


Figure 6.2 (2)

Location Map of Boring (Reparto)

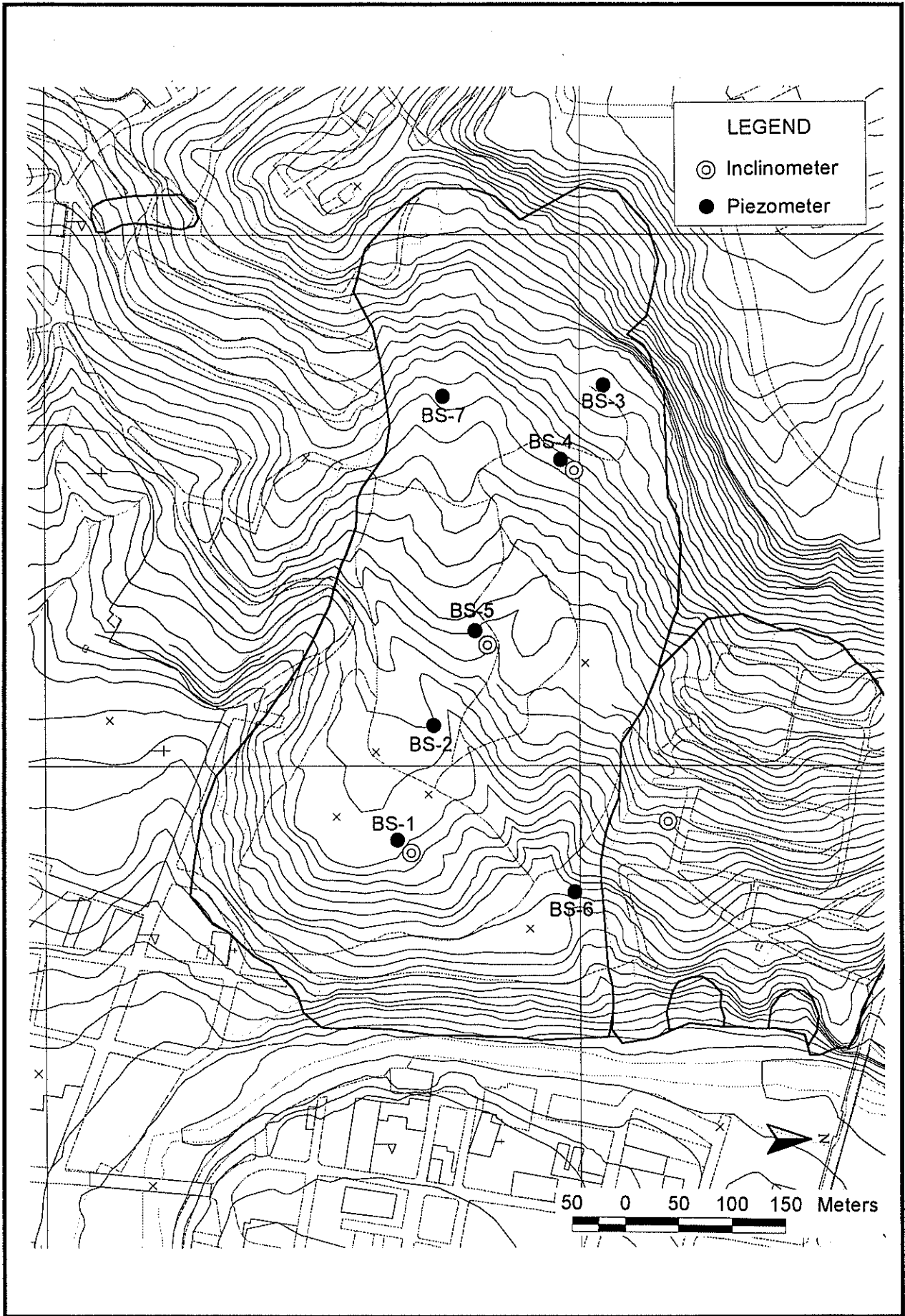


Figure 6.2 (3)

Location Map of Observation by SERNA

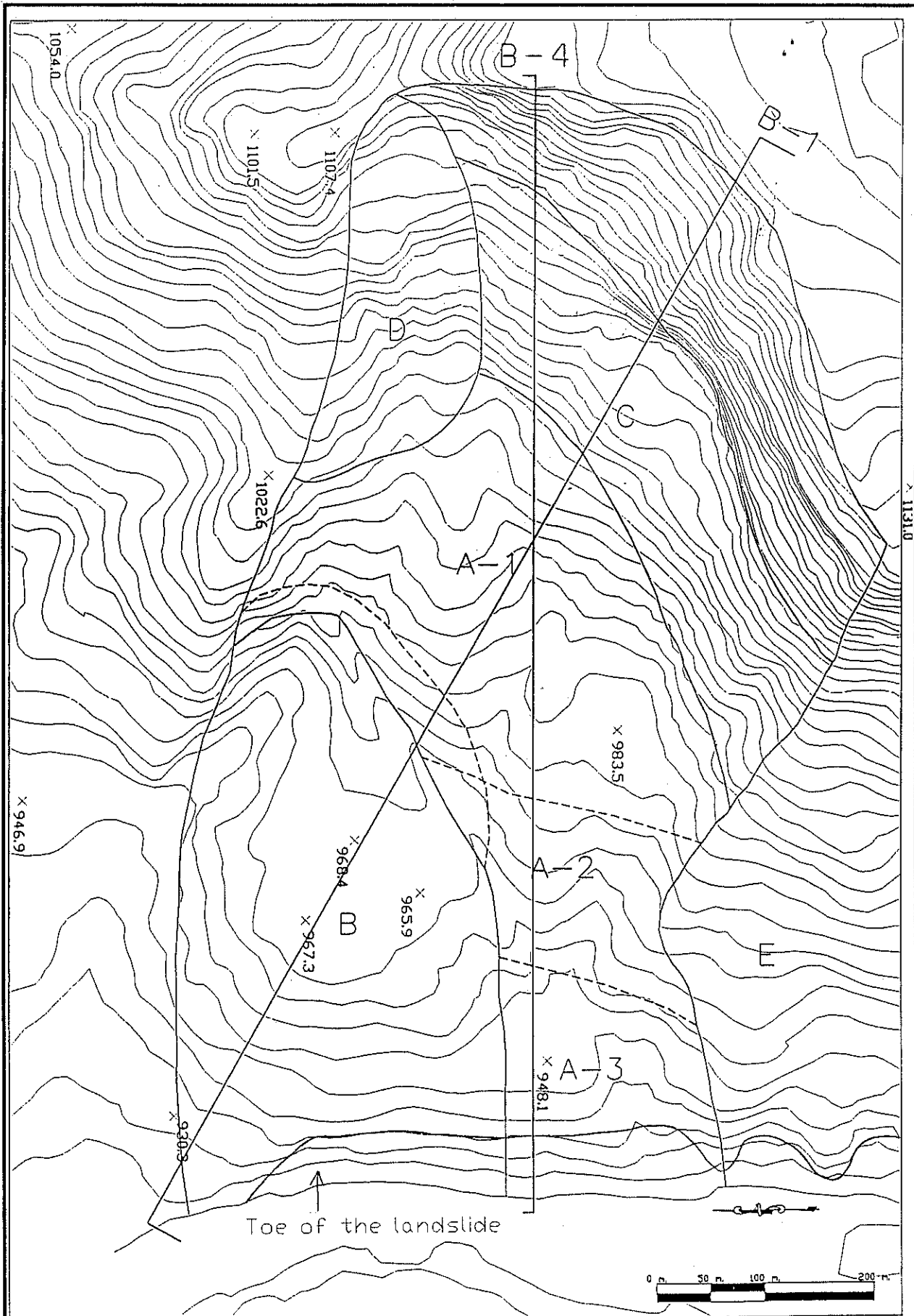
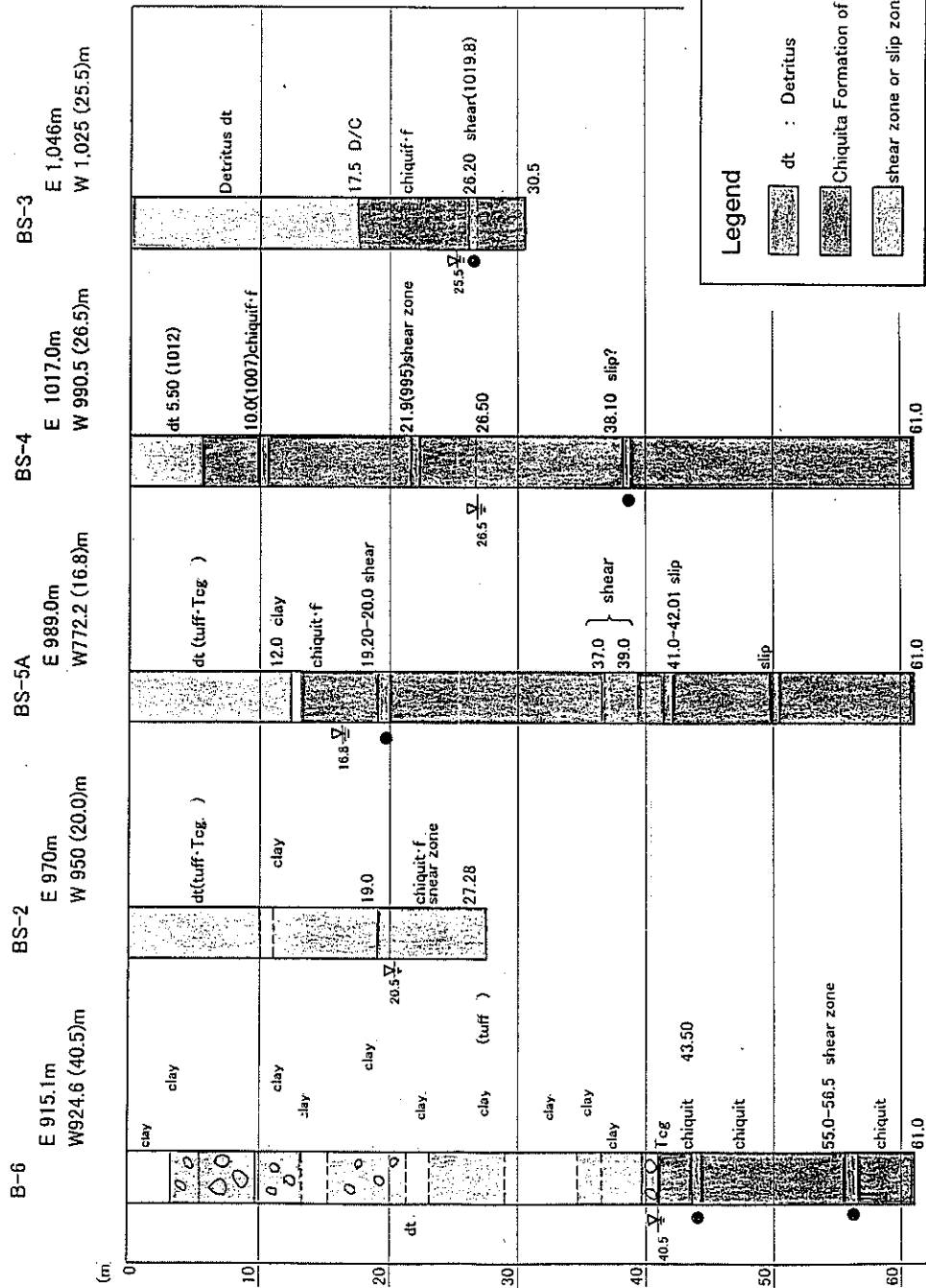


Figure 6.3

Several Landslide Sub-blocks in Berrinche

B-1 Profile

- BS-2,3,4,5 : US Corp of Engineers (SERNA)
- B-6 : JICA Study



Legend

- dt : Detritus
- Chiquita Formation of Rio Chiquit
- shear zone or slip zone

Figure 6.4 (1)

Boring Result in Berrinche (1/3)

B-4 Profile

○ B-3,4,C-3 : JICA Study

C-3 E 925.0m W 921.8 (3.2)m
 B-4 E 924.5m W 918.4 (6.1)m
 B-3 E 942.0m W 913.3 (29.0)m

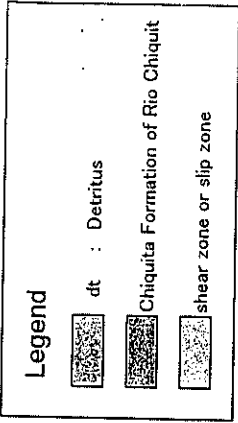
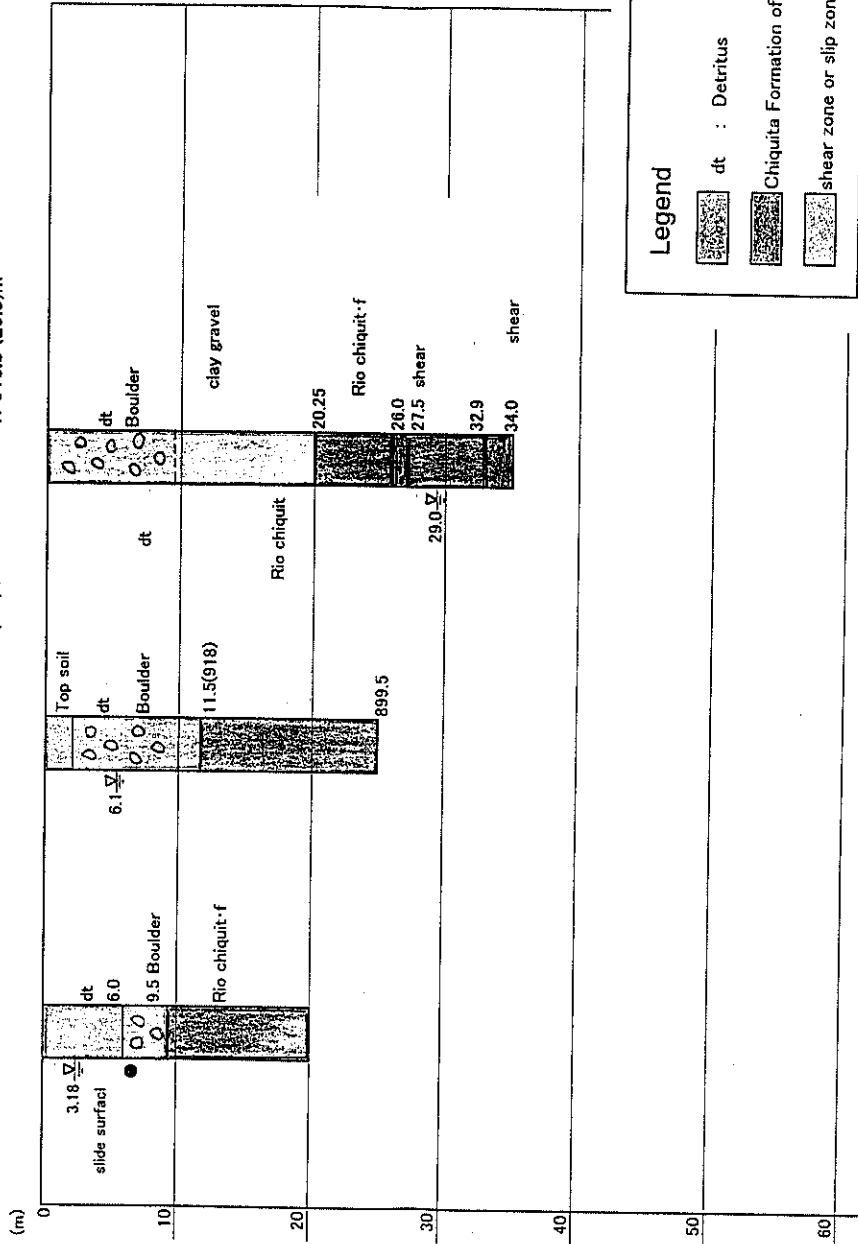


Figure 6.4 (2)

Boring Result in Berrinche (2/3)

● BS-4,5 : US Corp of Engineers (SERNA)
 ○ B-2 : JICA Study

B-4 Profile

B-2 E 975.6m W 954.1,951.6 (21.5)m
 BS-5A E 989.0m W 972.2 (16.8)m
 BS-4 E 1,017m W 990.5 (26.5)m

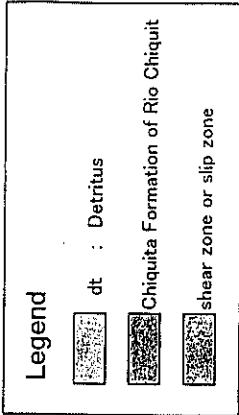
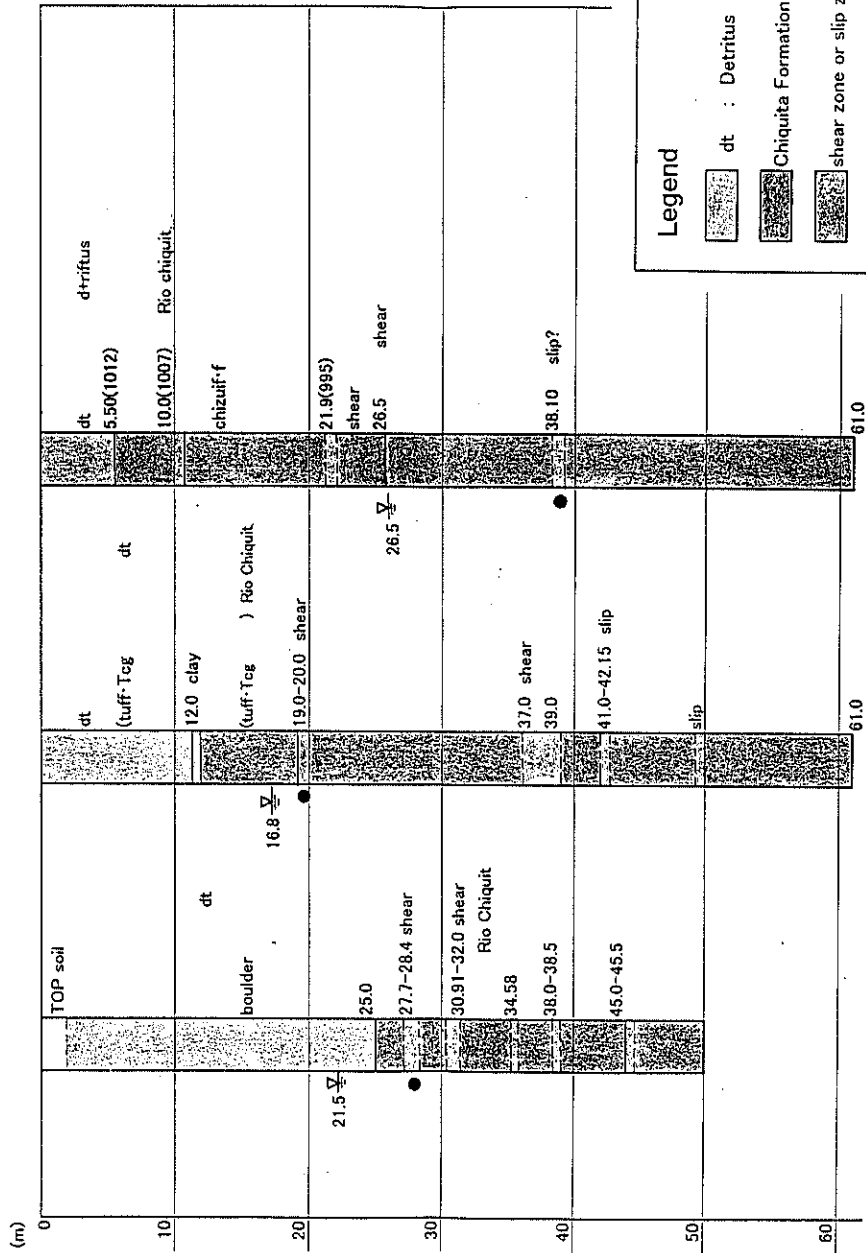


Figure 6.4 (3)

Boring Result in Berrinche (3/3)

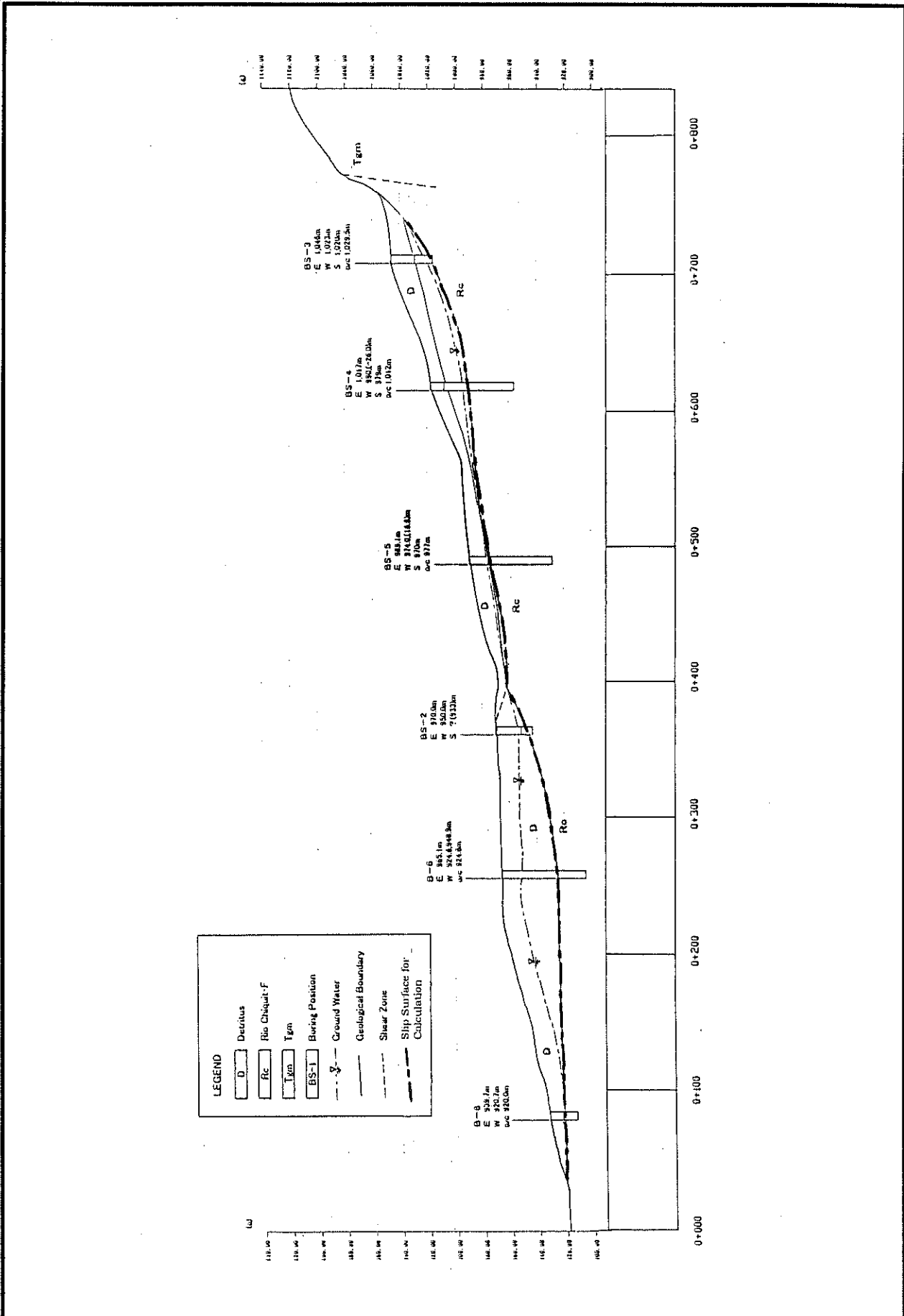


Figure 6.5

Slip Surface of the Profile B-1

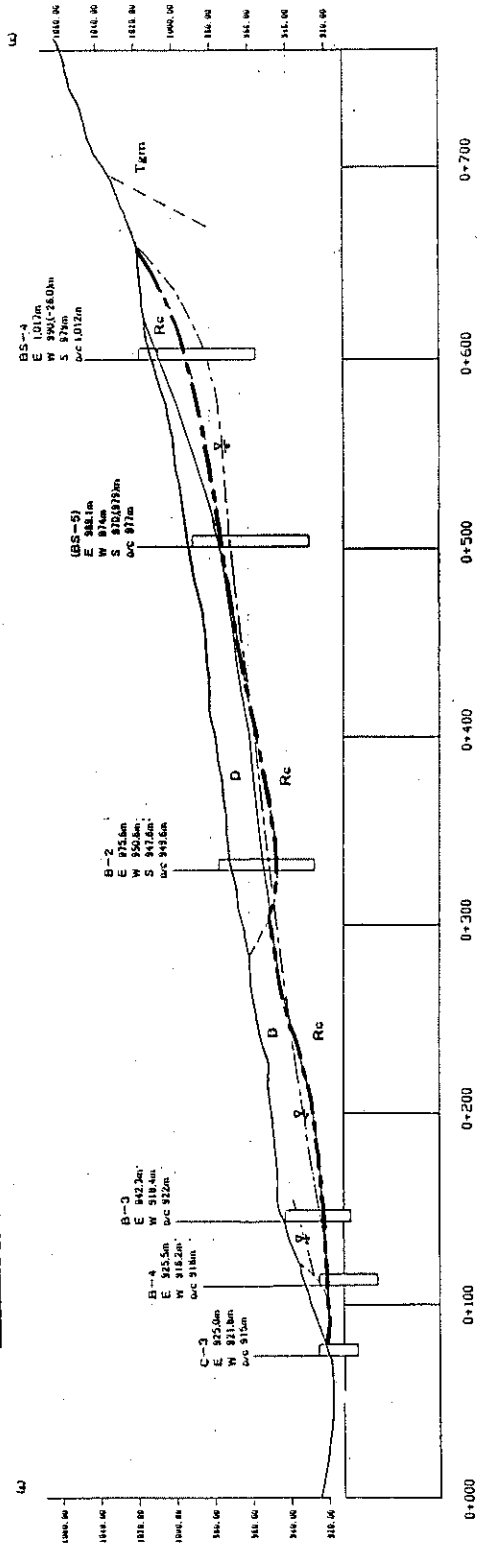
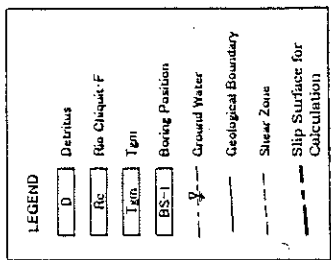
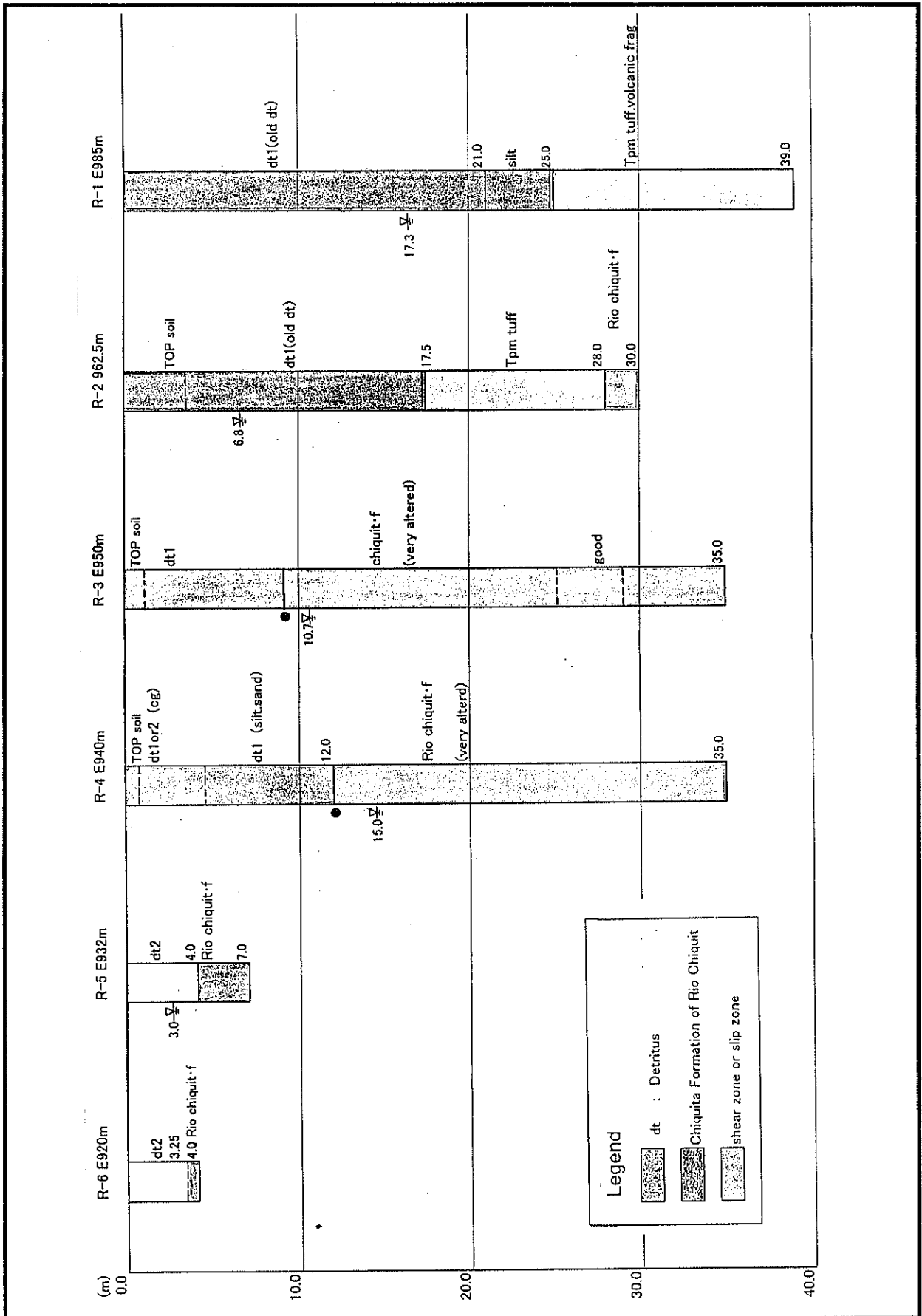


Figure 6.6

Slip Surface of the Profile B-4



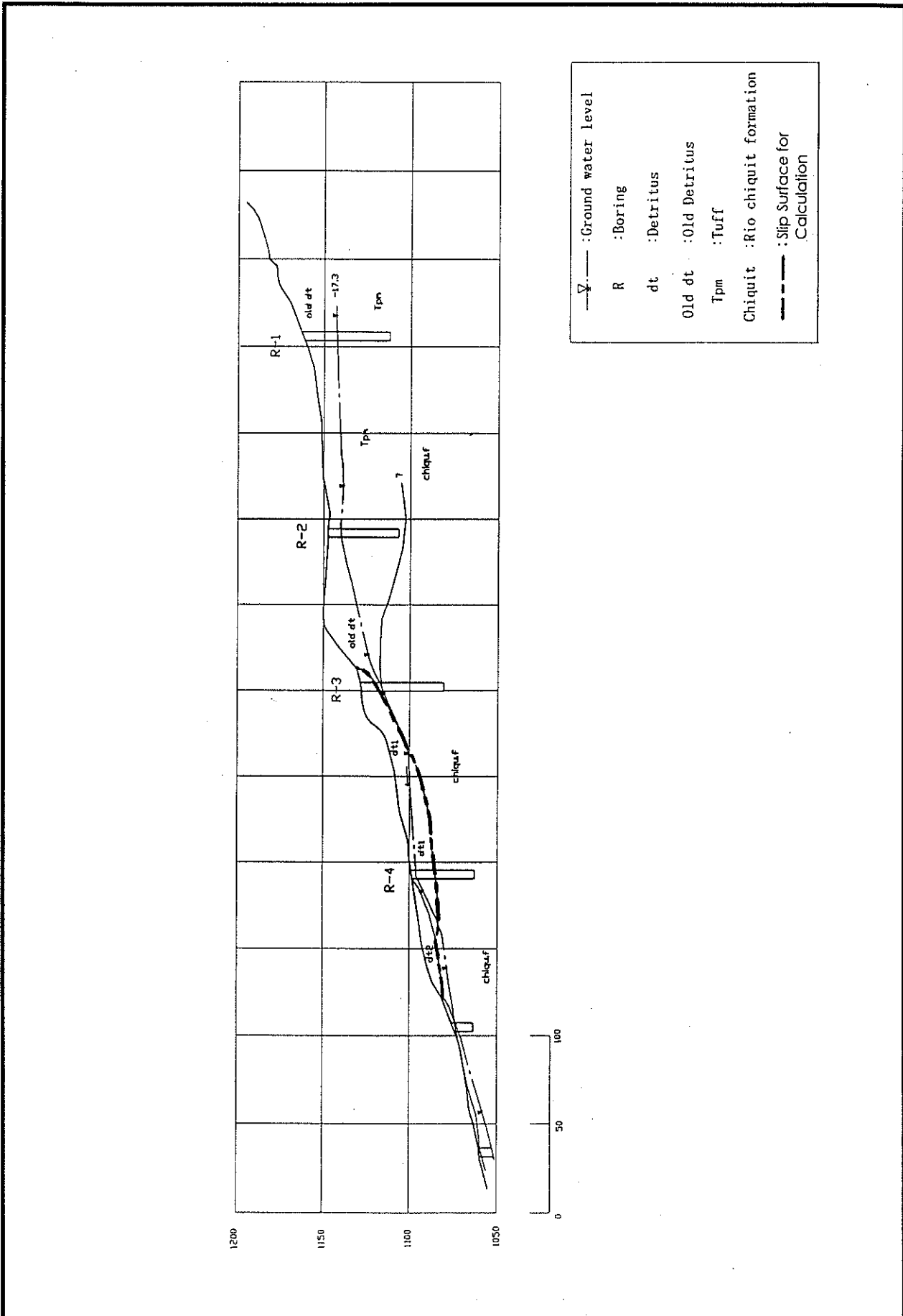


Figure 6.8

Slip Surface in Reparto

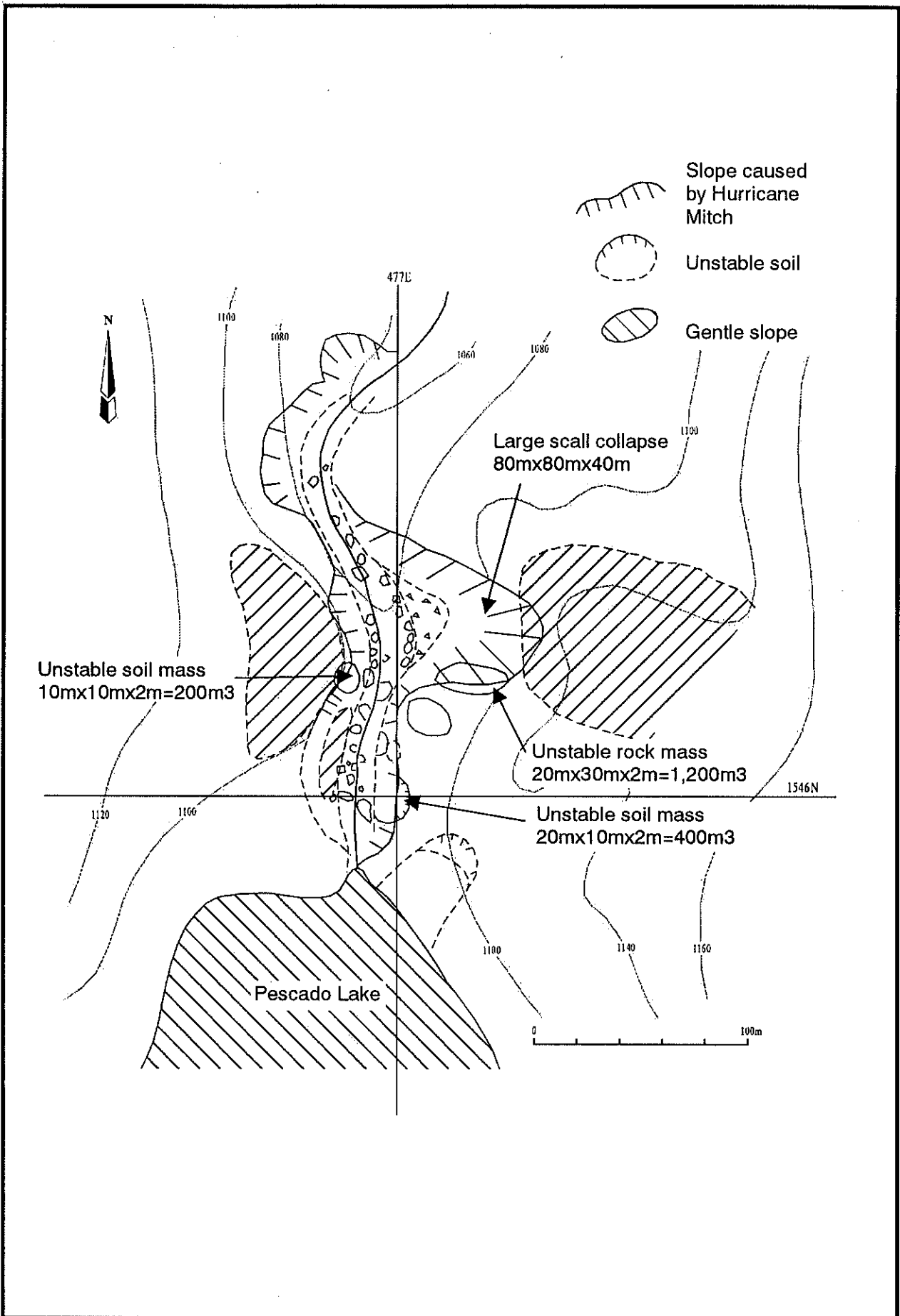


Figure 6.9

Geological Sketch of Pescado Lake

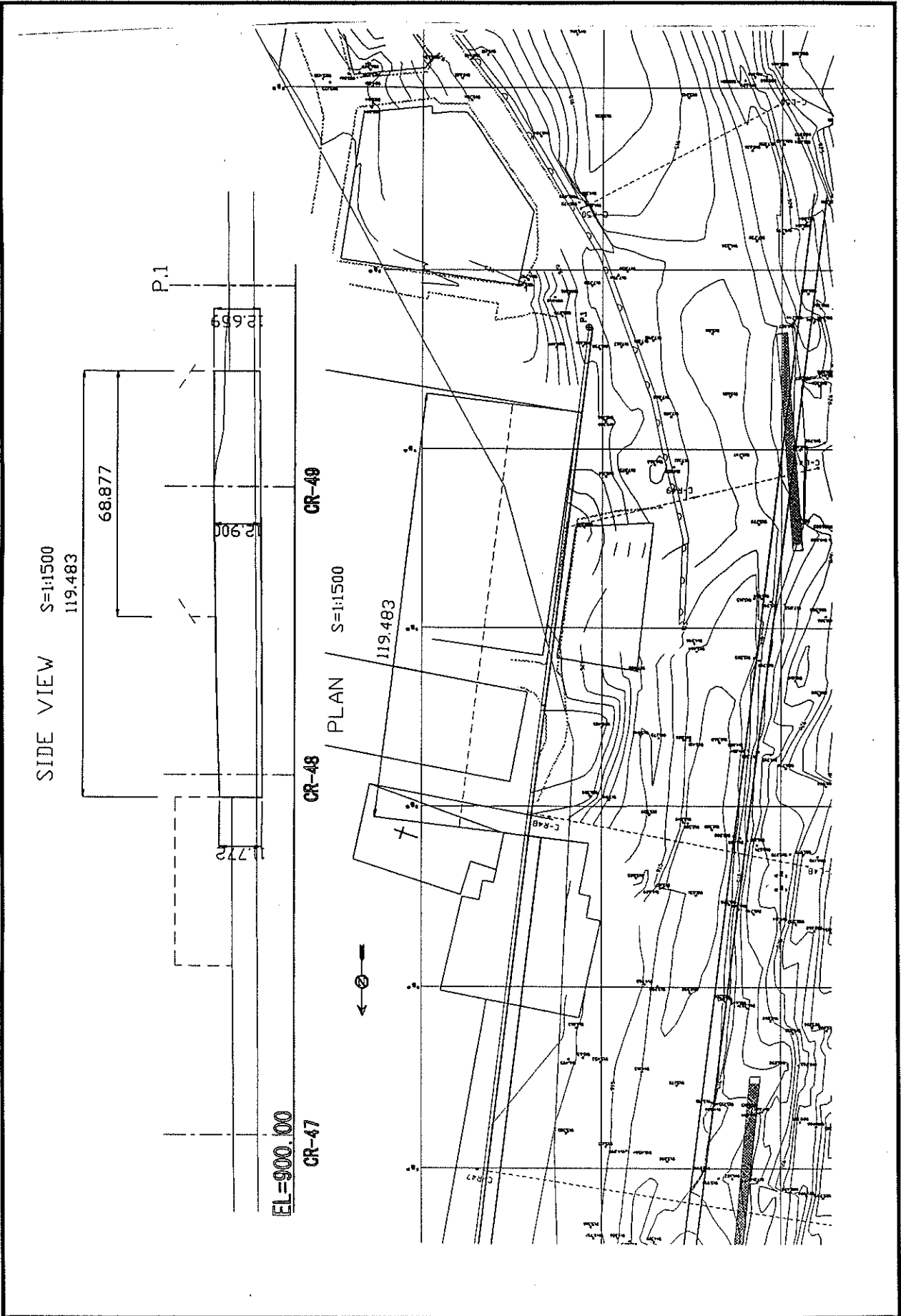
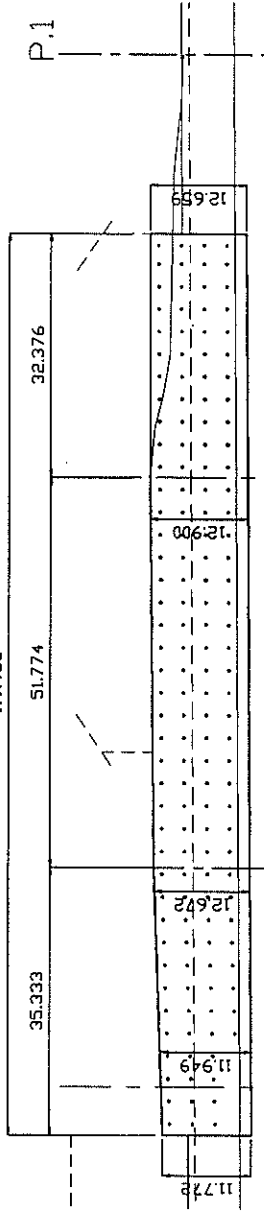


Figure 6.10

Anchor Works for Right Bank at Berrinche (1)

SIDE VIEW S=1:1000
119.483

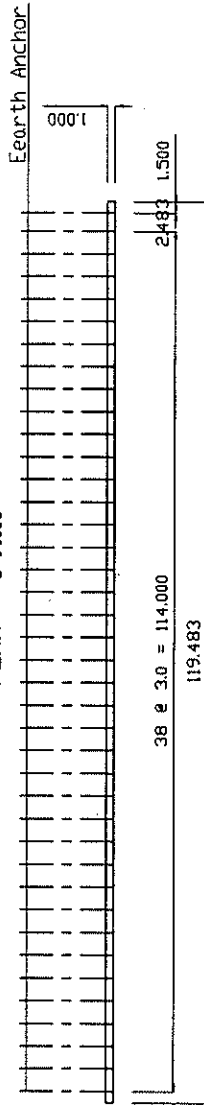


EL=900.00

CR-48

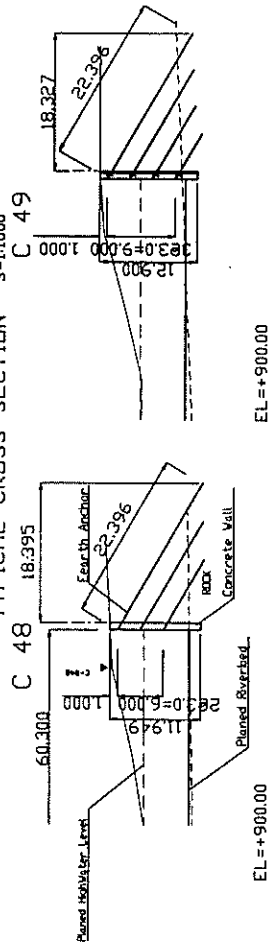
CR-49

PLAN S=1:1000



3.0 @ 3.0 = 114.000

TYPICAL CROSS-SECTION S=1:1000



EL=900.00

EL=900.00

Figure 6.11

Anchor Works for Right Bank at Berrinche (2)