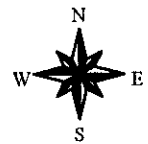


**LEGEND**

- Airport
- Cemetery
- Protocol & Business
- Commercial
- Forest & Shrubs
- Industrial Areas
- Army Facility
- Park & Green Areas
- Public Facility

- R-1: Residential 250 pers. / ha
- R-2: Residential 400 pers. / ha
- R-3: Residential 500 pers. / ha
- R-4: Residential 800 pers. / ha
- R-5: Residential > 800 pers. / ha
- Reservoir
- River Reserve Area
- Roads & Streets
- Sports Field
- Vacant Space

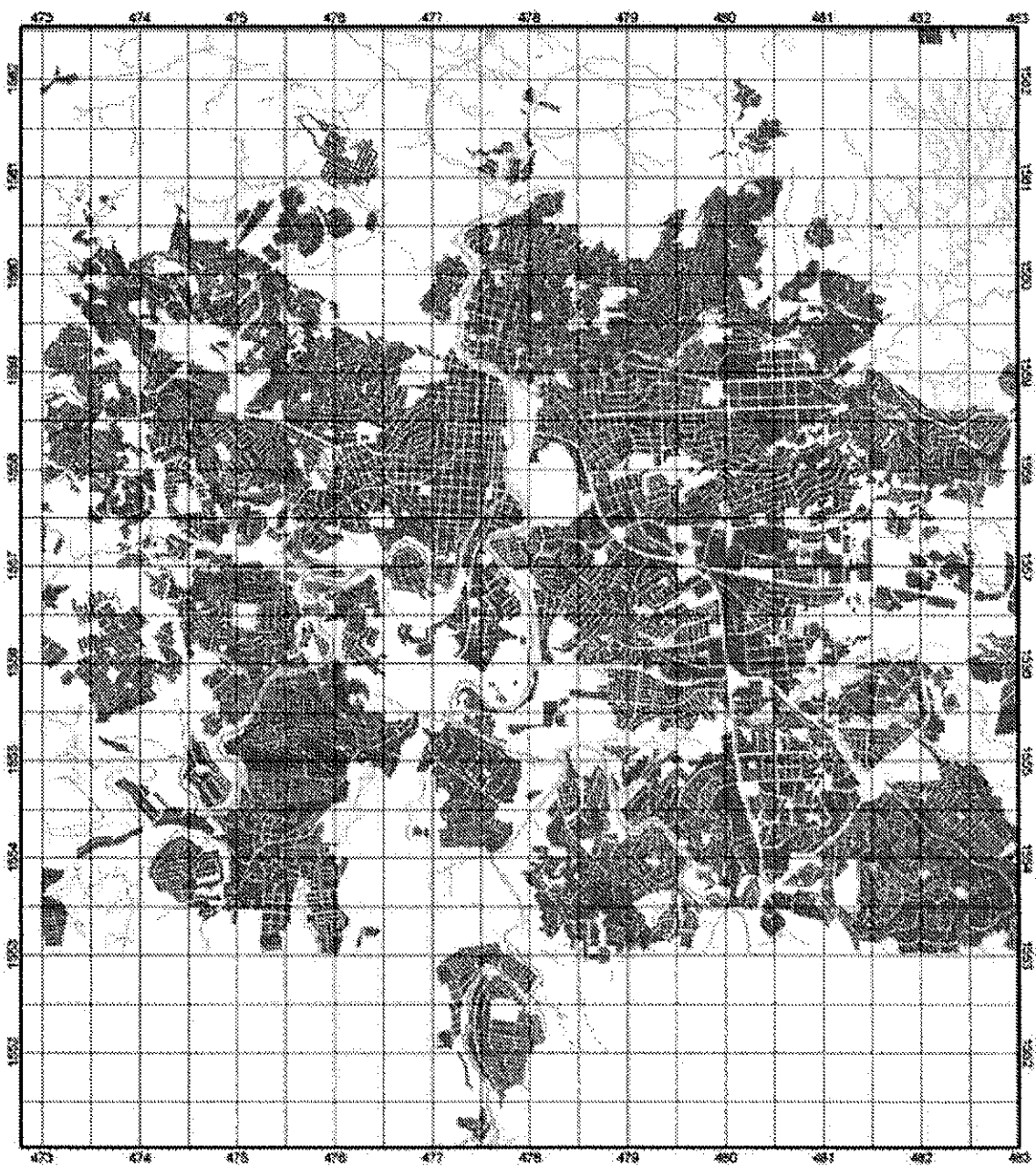


0.5 0 0.5 1 1.5 Kilometers



**Figure 2.10**

**Present Land Use of the Target Area**



0.5 0 0.5 1 1.5 Kilometers

**Figure 2.11**

**Present Distribution of the Built up Area in the Target Area**

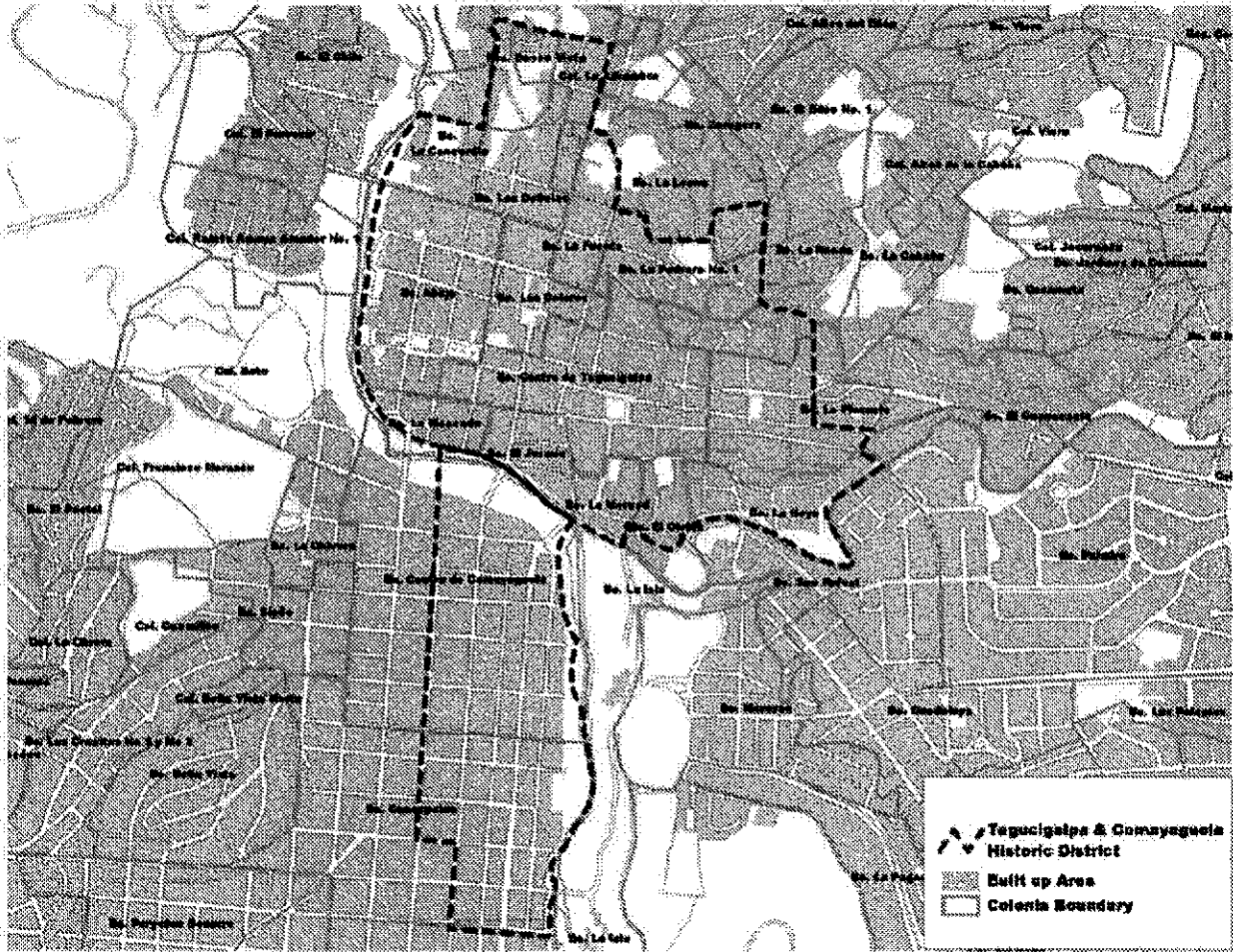


Figure 2.12

Map of the Historical Area of Tegucigalpa/Comayaguela and Neighboring Areas, 1994

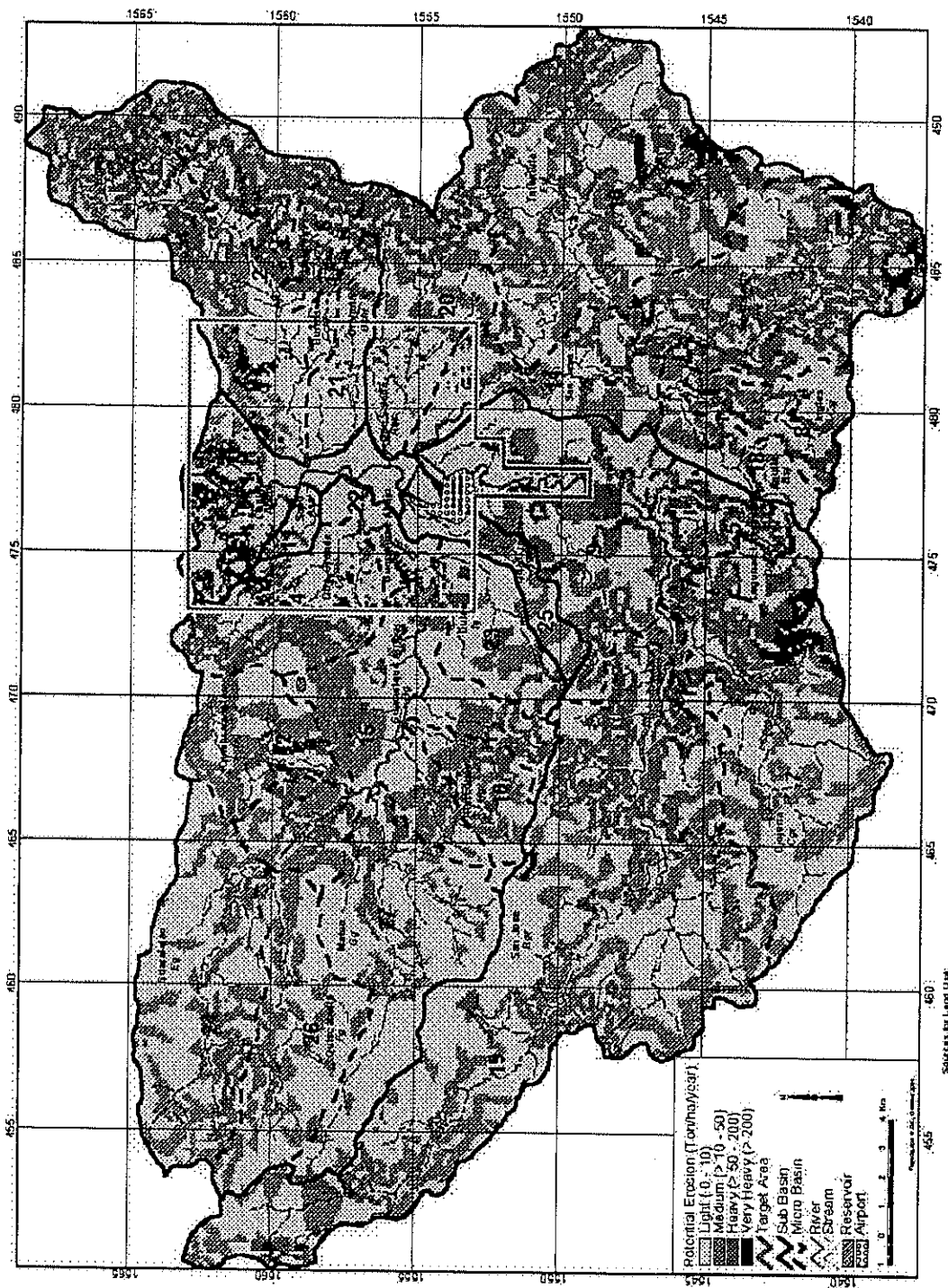


Figure 2.13

Distribution of Potential Erosion in the Study Area

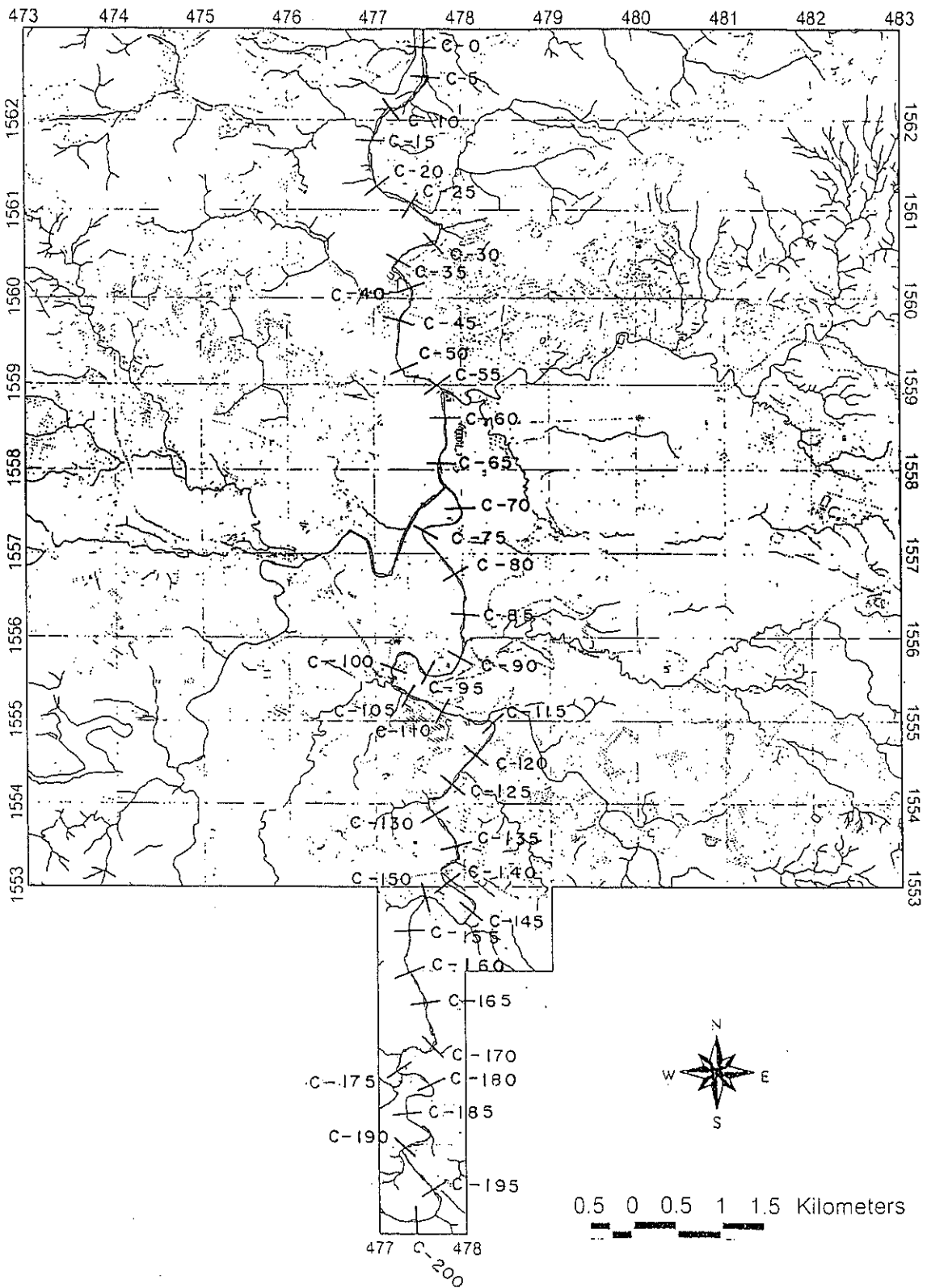


Figure 2.14

Choluteca River with the River Survey Milestone Numbers

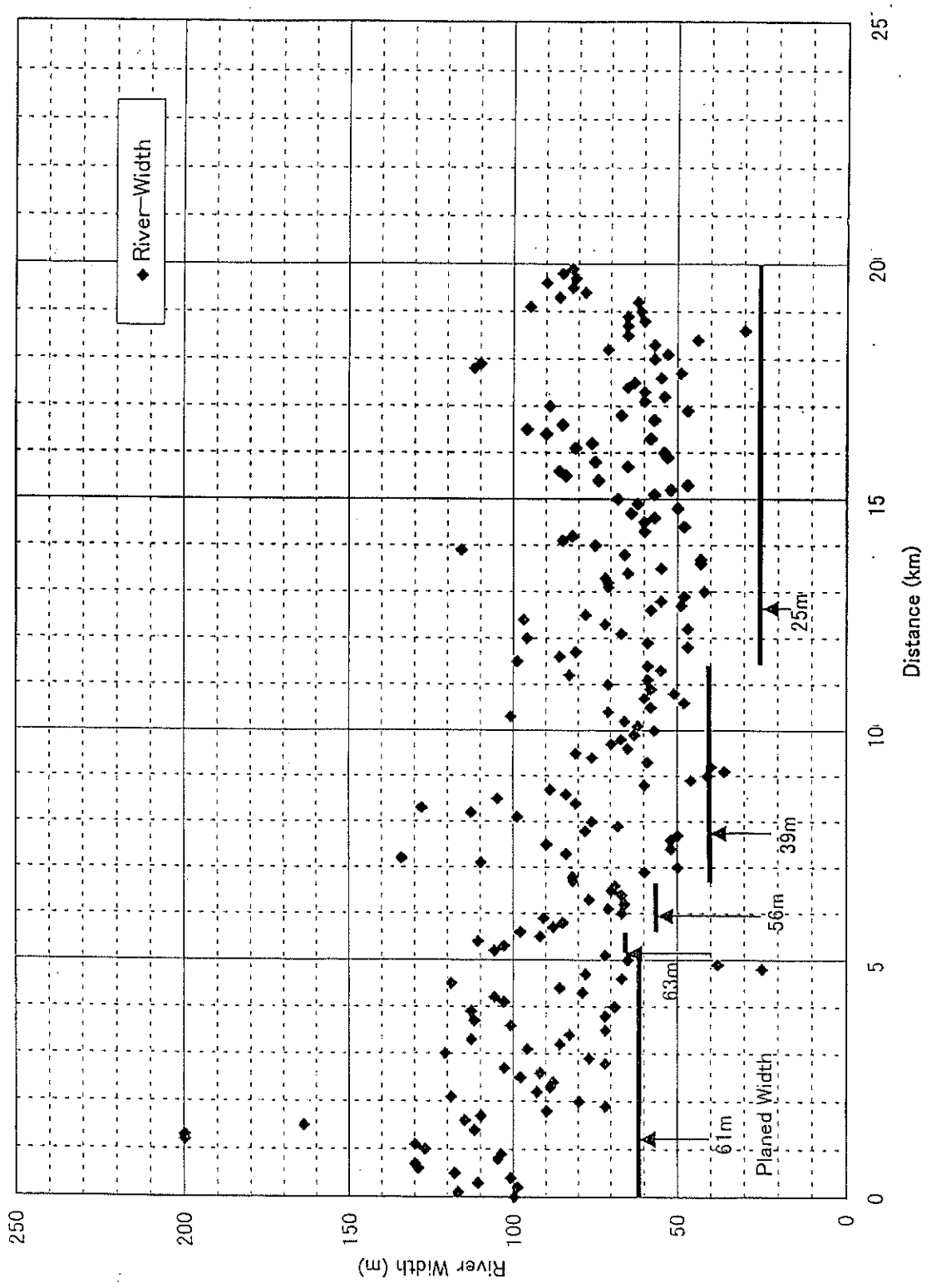


Figure 2.15

Width of the Present River

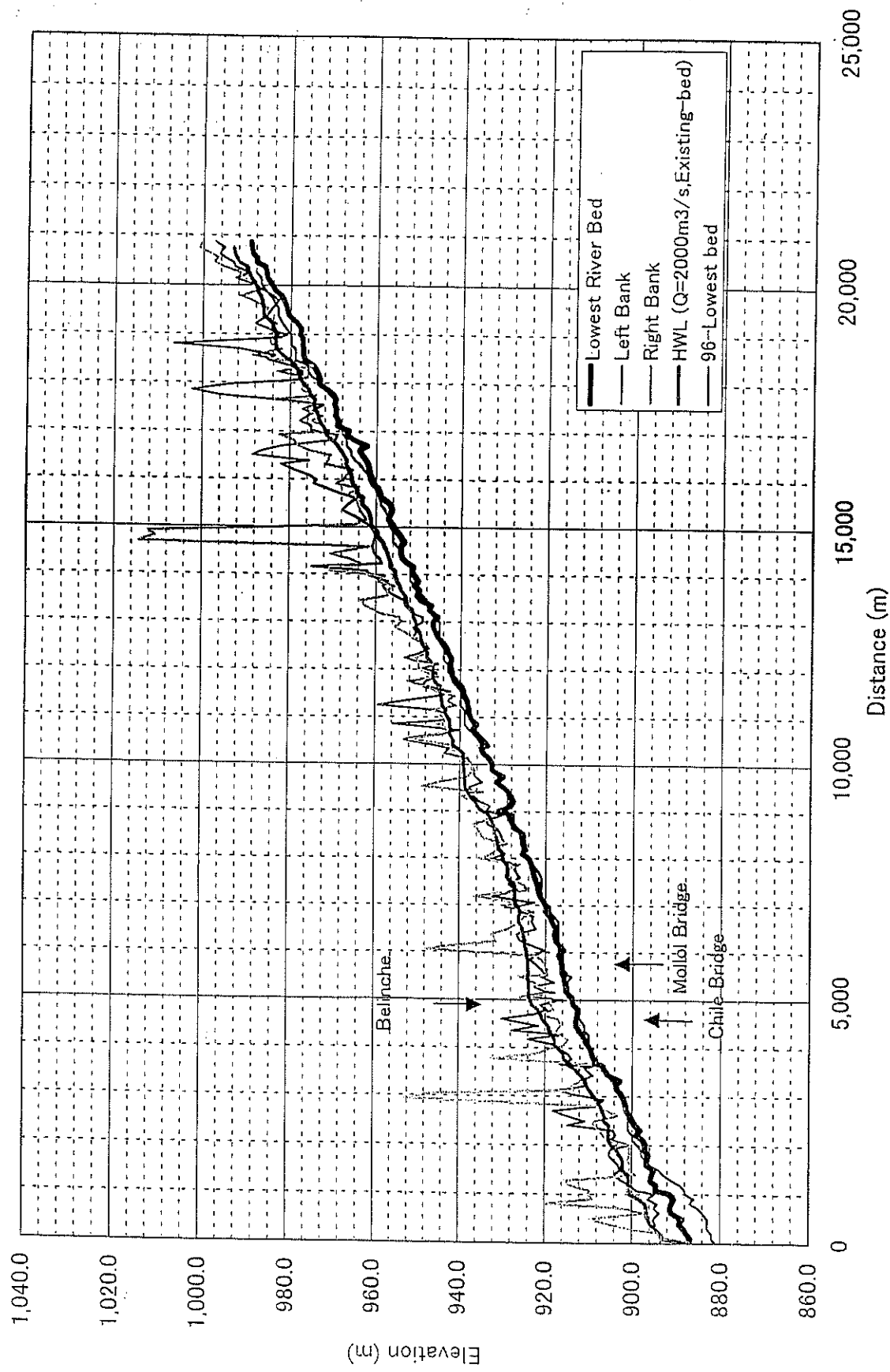


Figure 2.16

Profile of the Present River



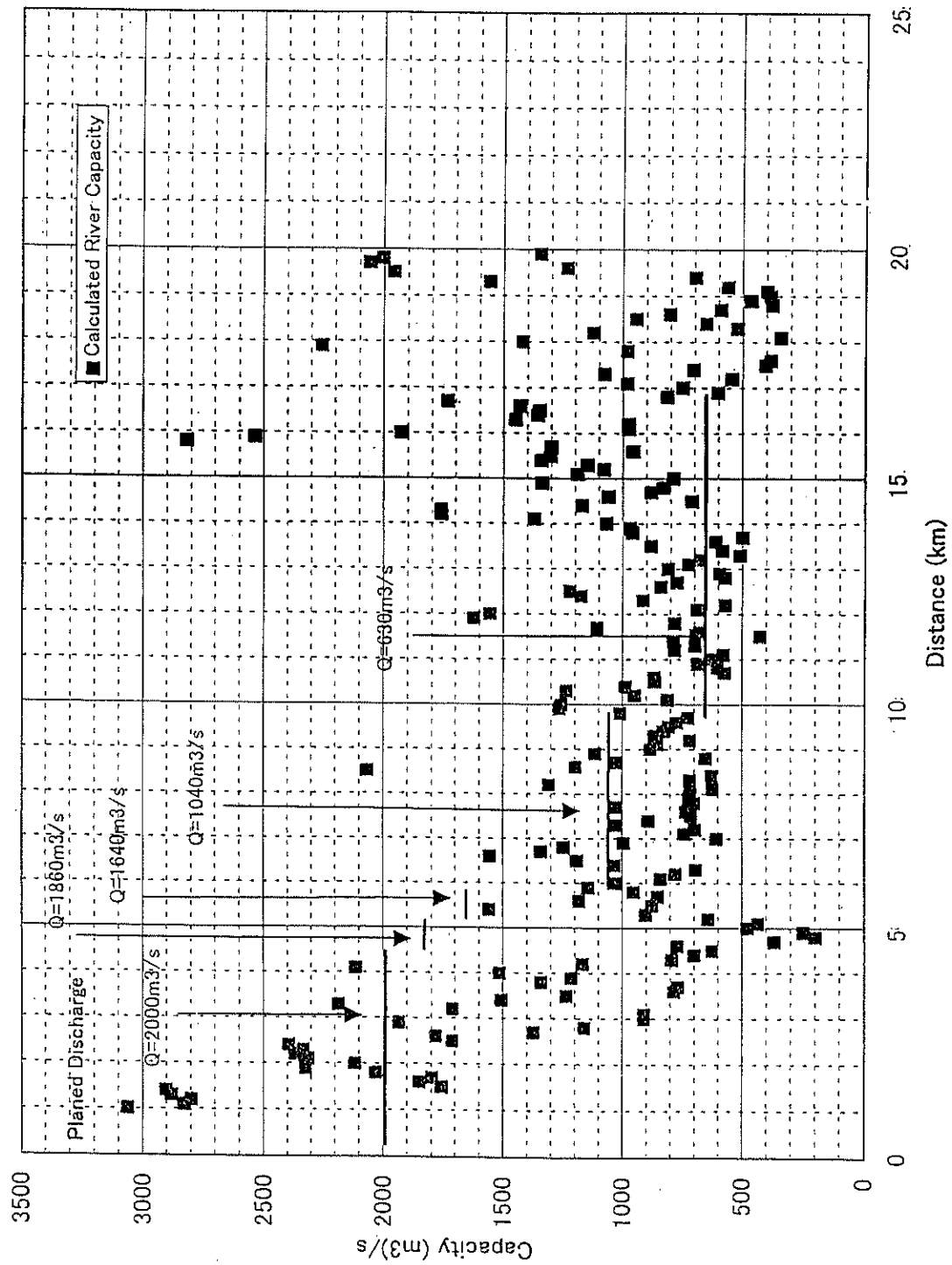
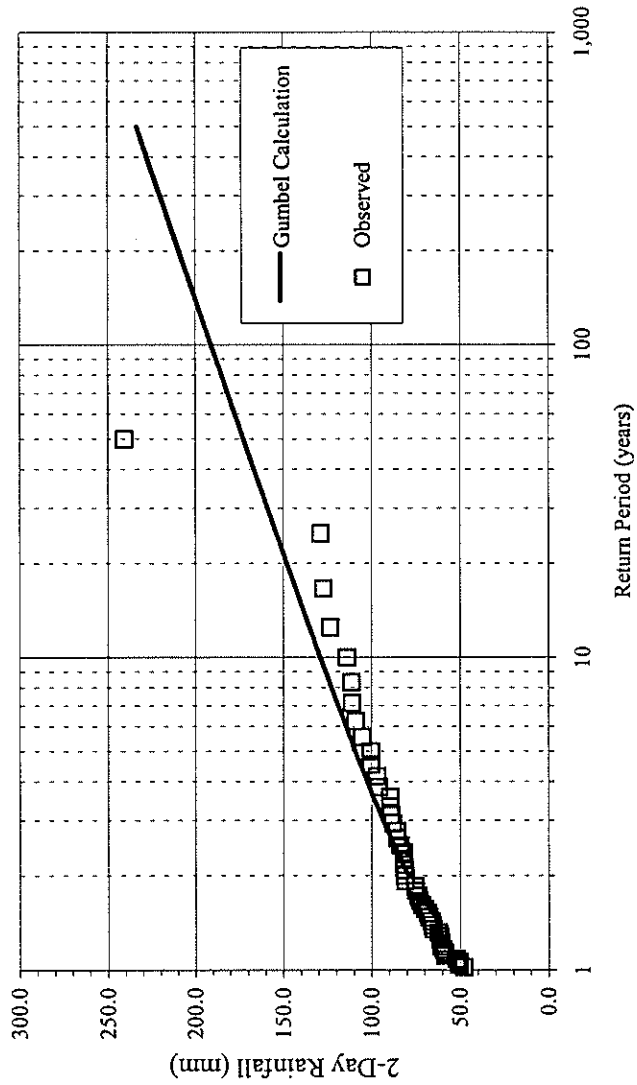


Figure 2.17

Discharge Capacity of Each Section of the River

Maximum 2-Day Rainfall and Return Period at Toncontin Station  
(Data from 1951 to 1999)



Return Period (year)	2-Day Rainfall (mm)
500	233
400	227
300	220
250	215
200	209
150	202
100	191
80	185
60	177
50	172
40	167
30	159
25	154
20	148
15	140
10	129
9	126
8	123
7	119
6	115
5	109
4	103
3	93
2	79

Figure 2.19

Maximum 2-Day Rainfall and Return Period at Toncontin Station

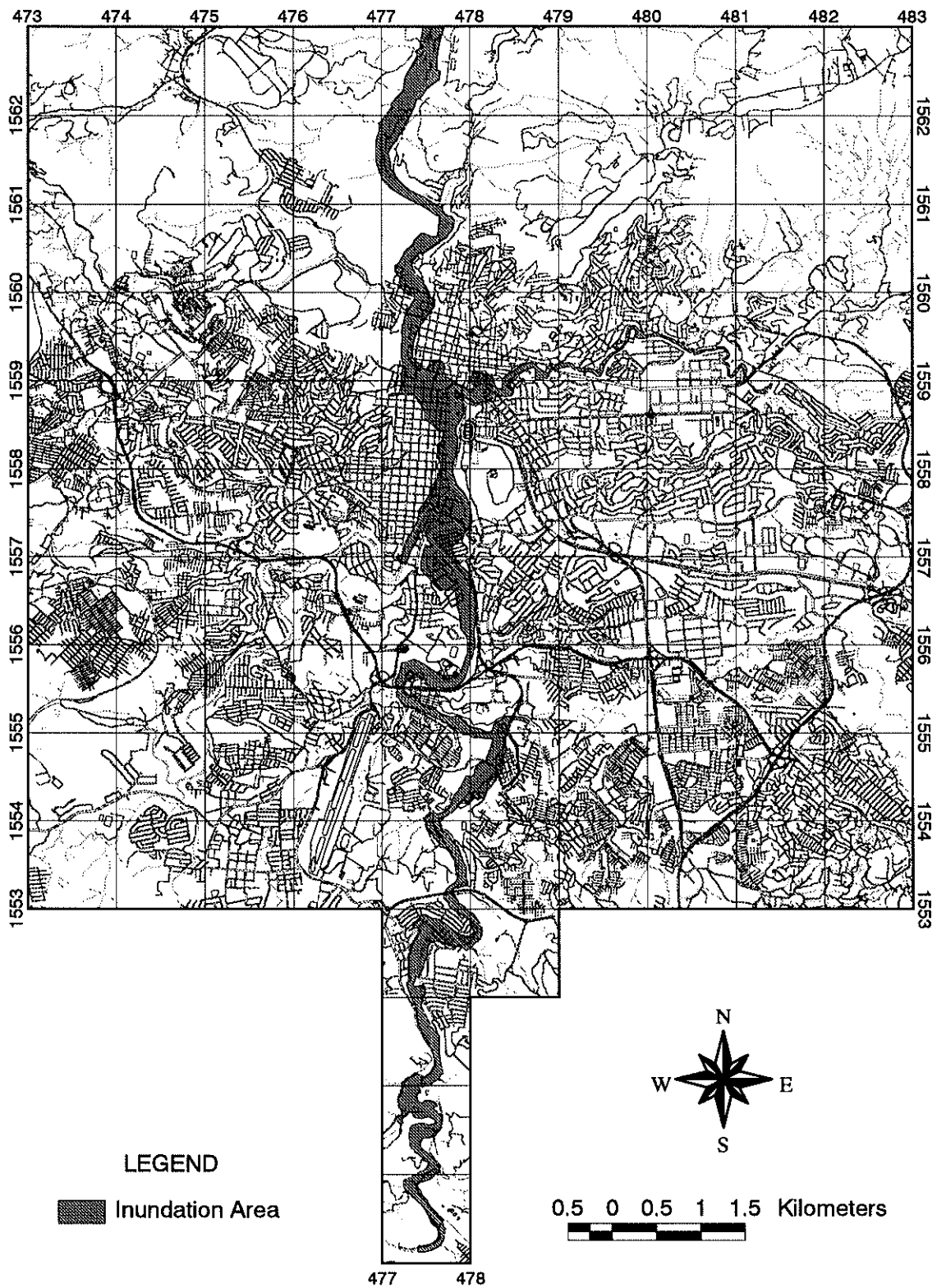


Figure 2.20

Result of the High Water Mark Survey

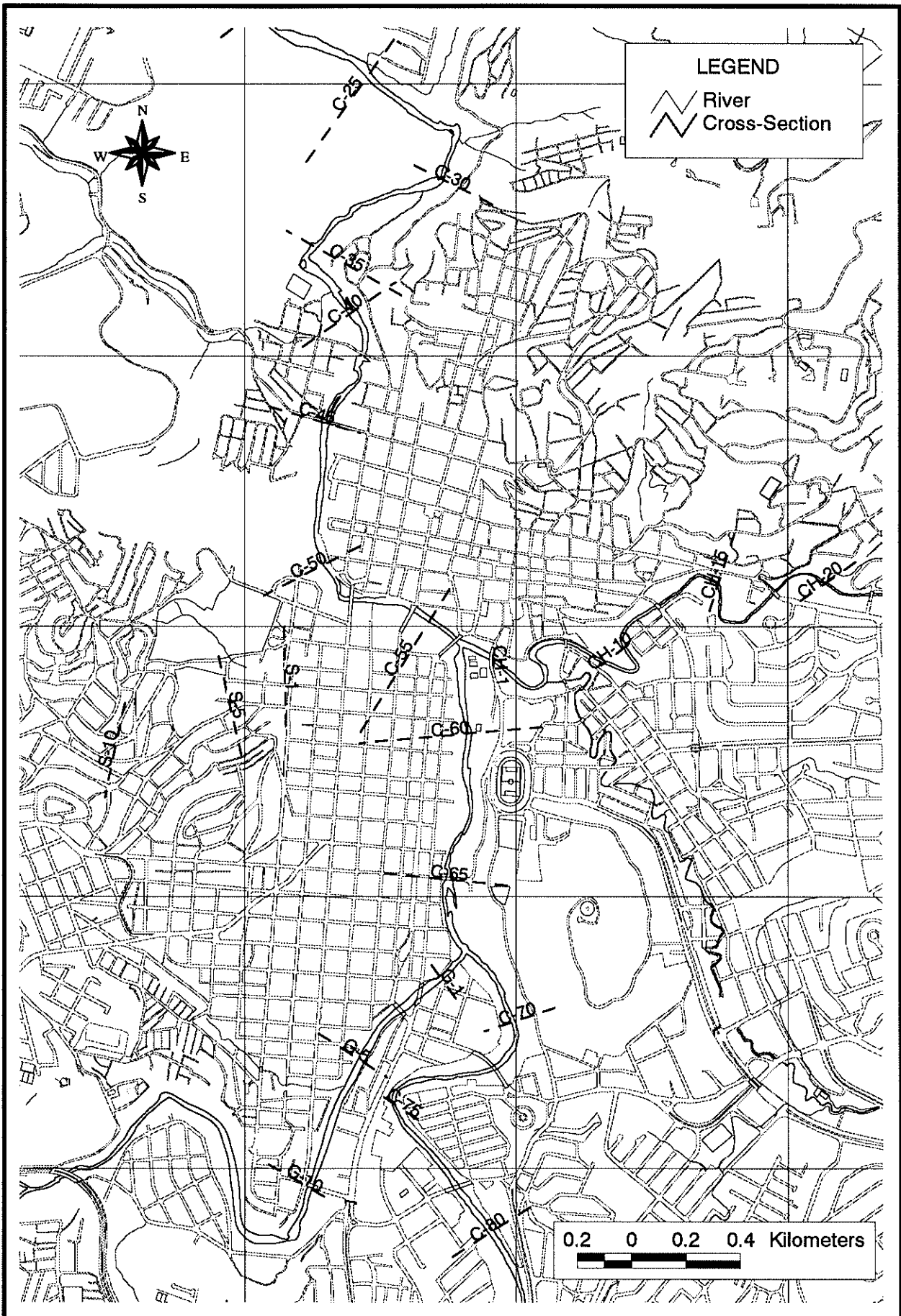


Figure 2.21

Locations of River Cross Sections in Central Area

Comparison of Cross Sections at Berinche in 1996 and 2001

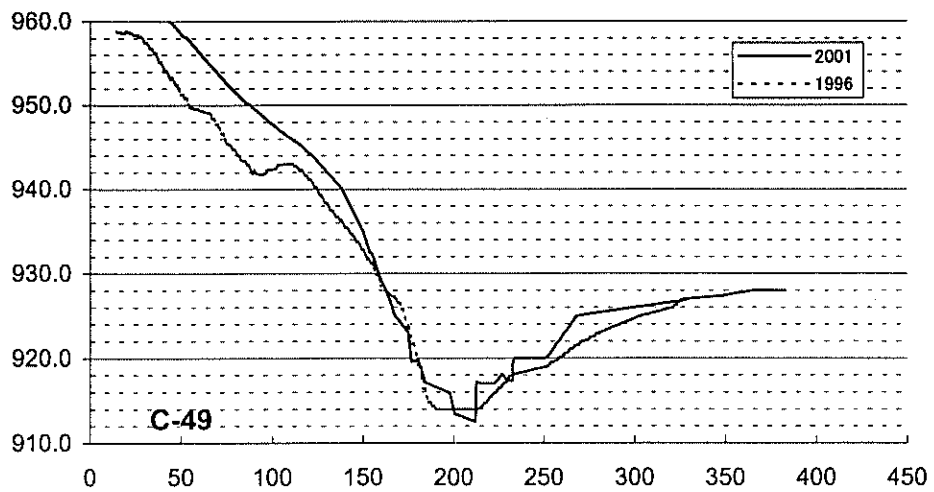
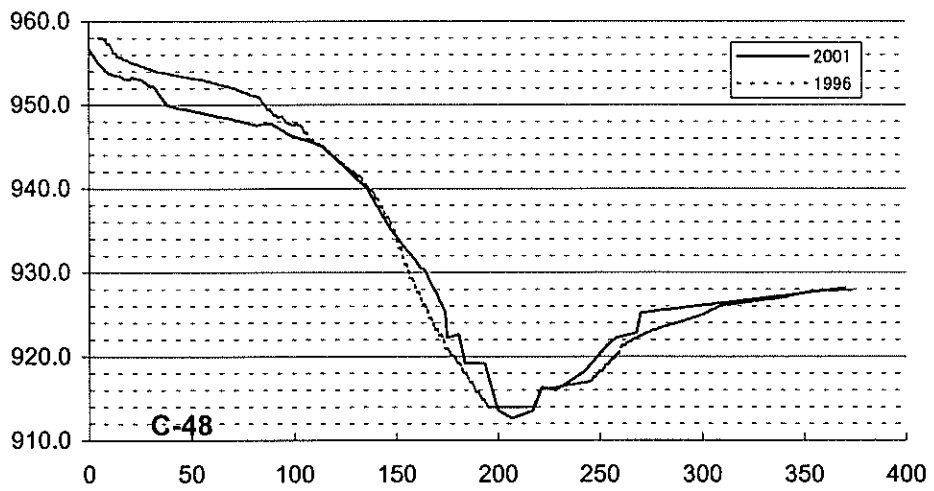
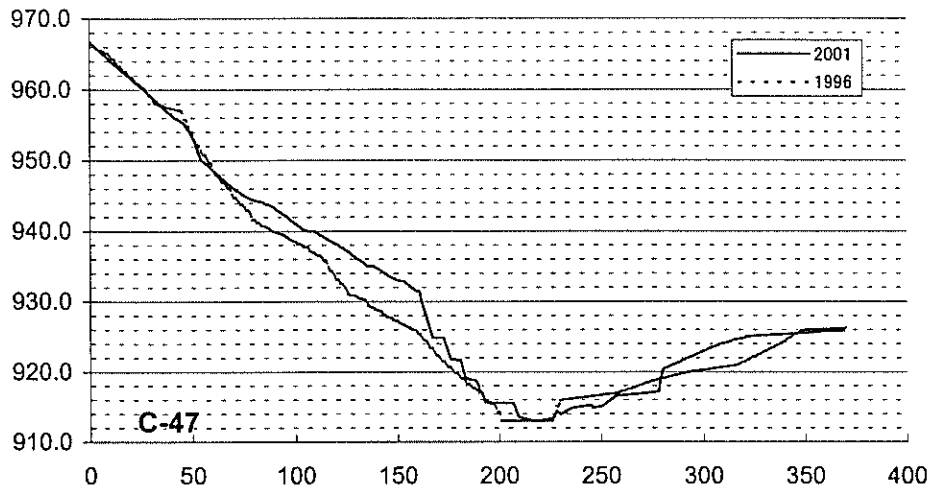
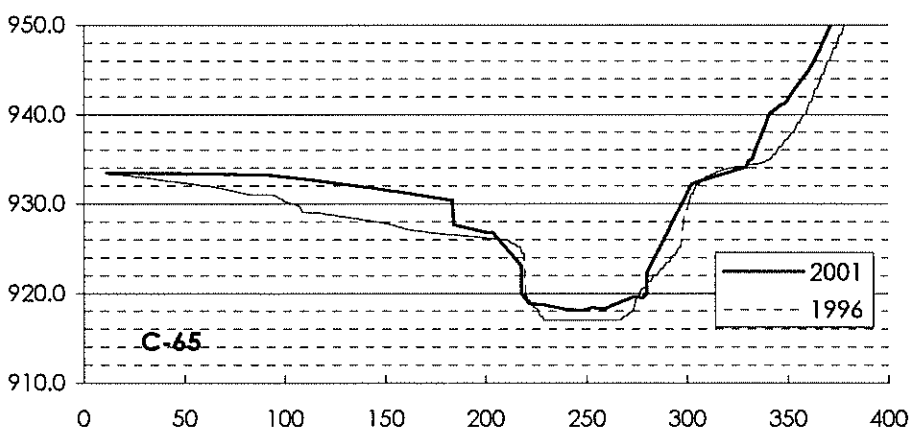
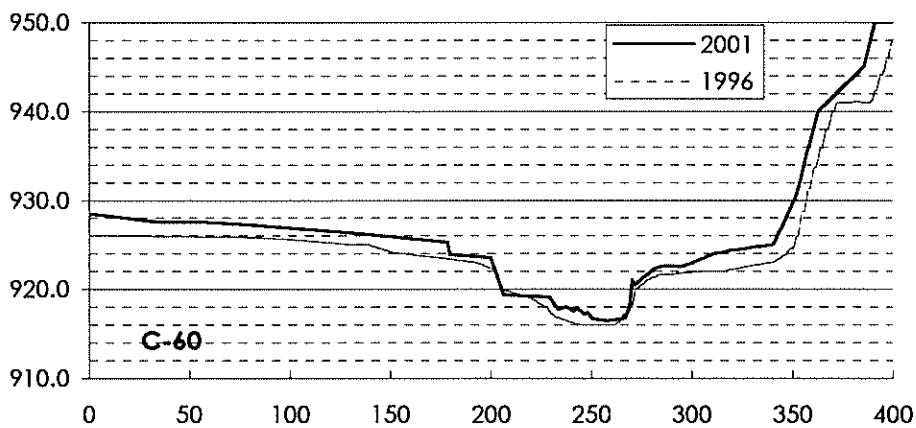
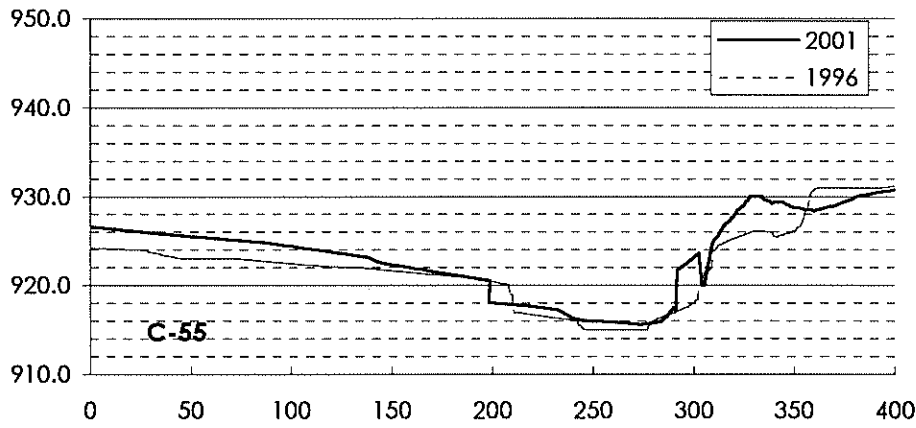
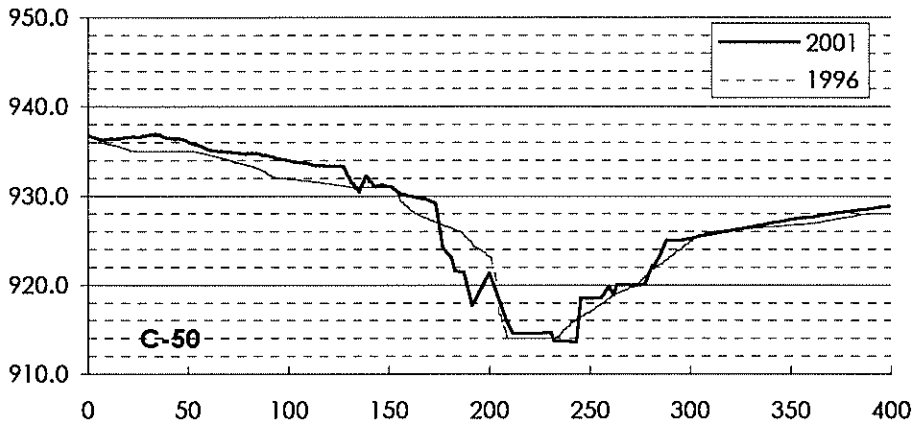


Figure 2.22 (1)

Comparison of Cross Sections at Berinche in 1996 and 2001



**Figure 2.22 (2)**

**Comparison of Cross Sections in 1996 and 2001**

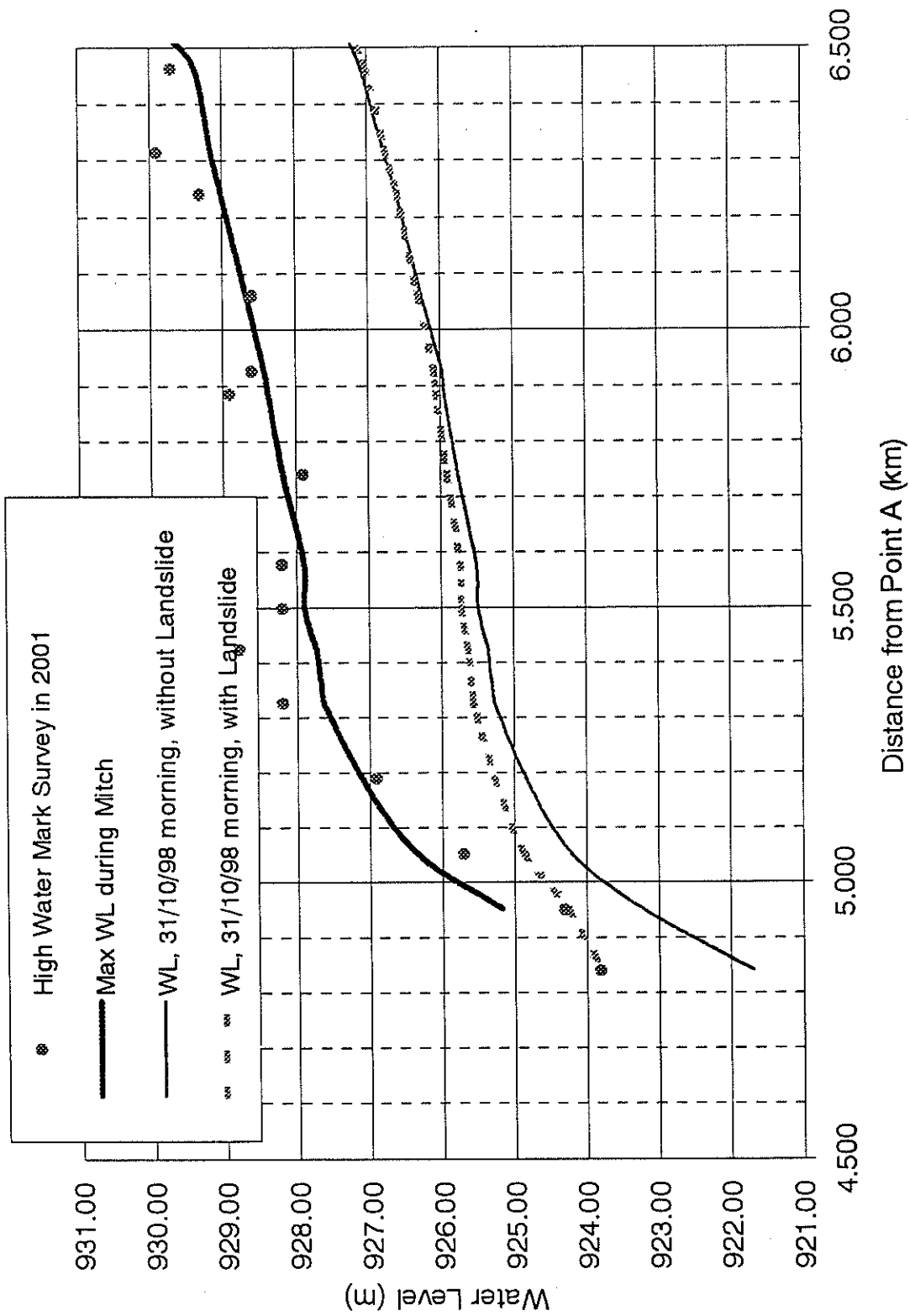
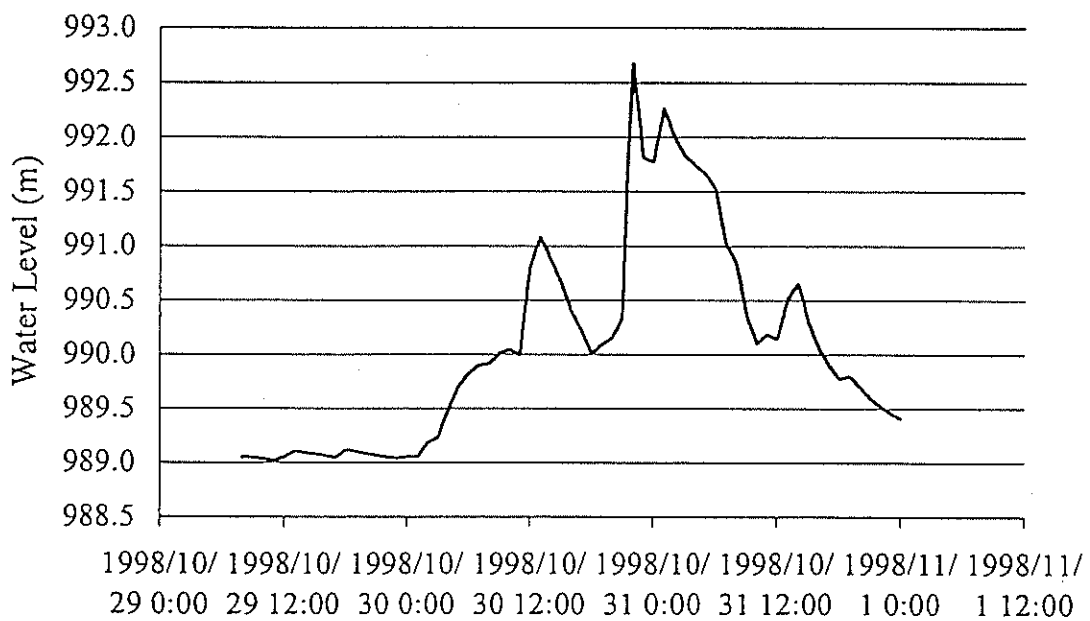


Figure 2.23

Water Level in Choluteca River during the Hurricane Mitch After Berinche Landslide (Oct. 31, 1998, 6:00)

**Water Level in the Upstream**  
(At Section C195, Chainage 403 m)



**Figure 2.24**

**Water Level in Upper Reach**



Water Level in the Downstream  
(At Section C115, Chainage 7,563 m)

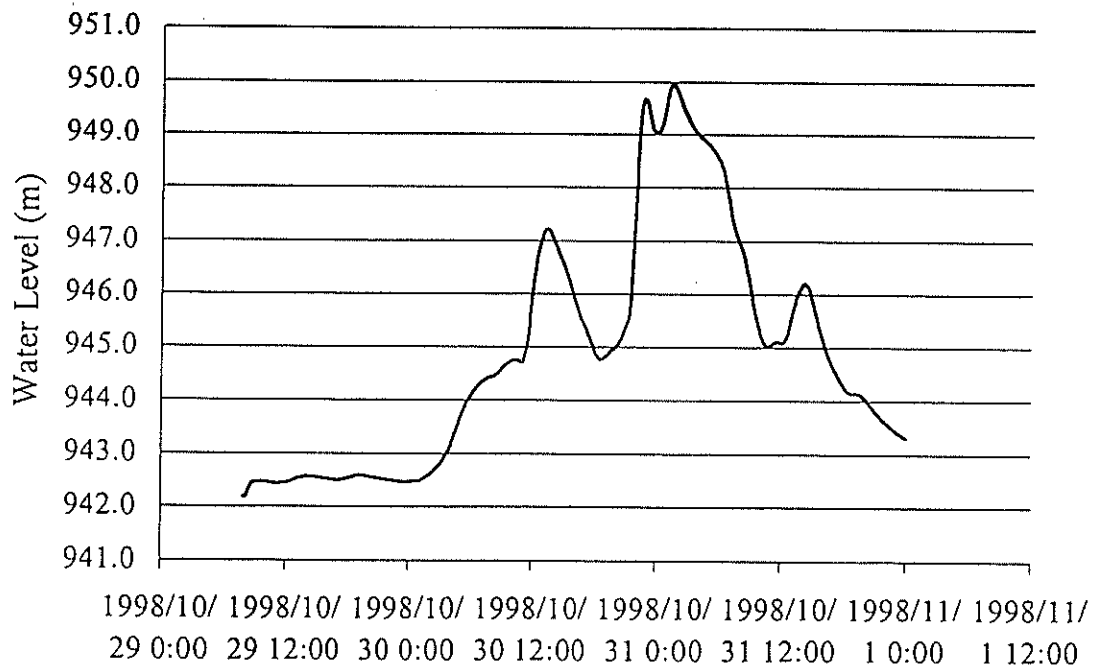


Figure 2.25

Water Level in Lower Reach

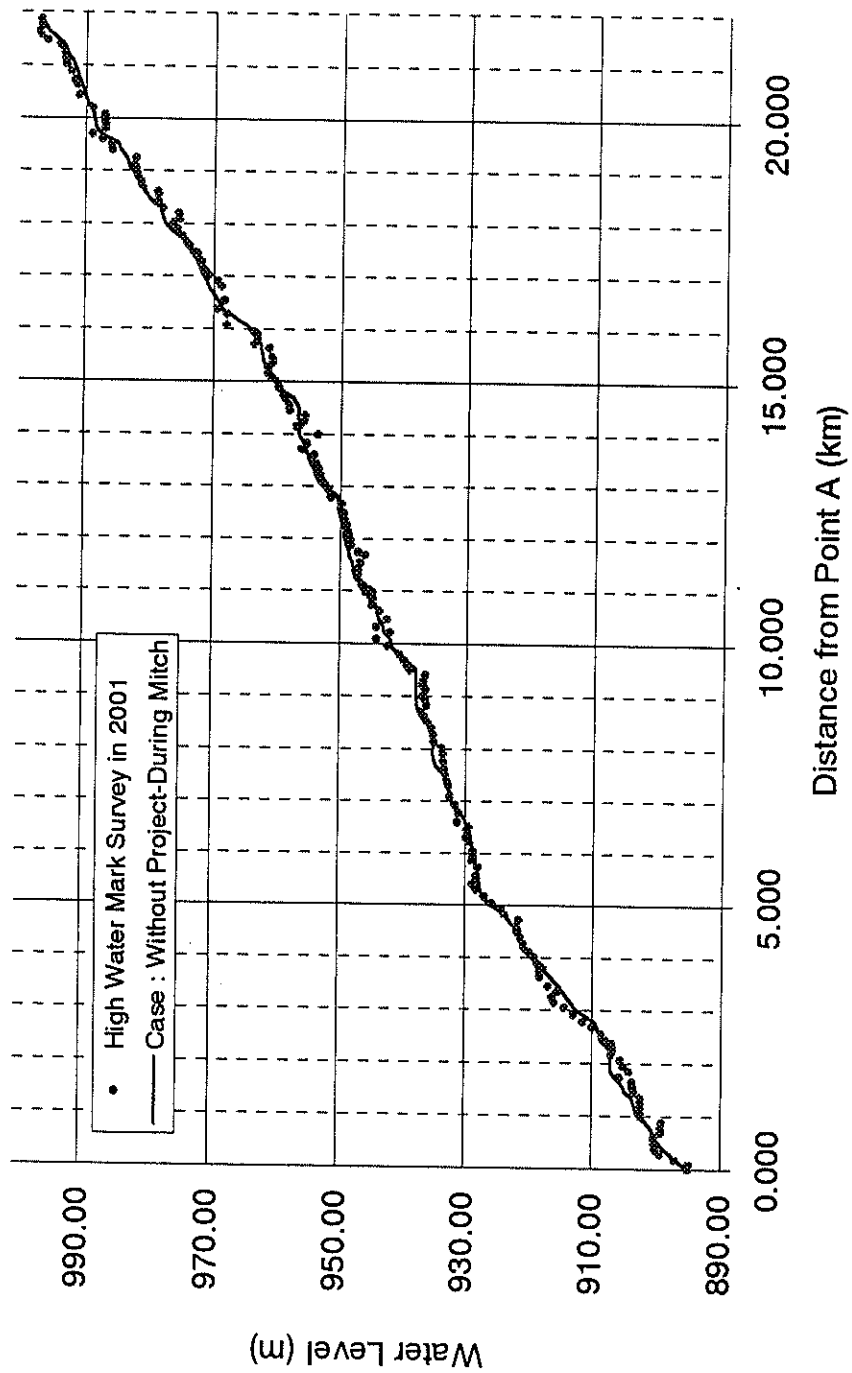


Figure 2.26

Simulated Water level in the Choluteca River during Hurricane Mitch and from High Water Mark Survey