

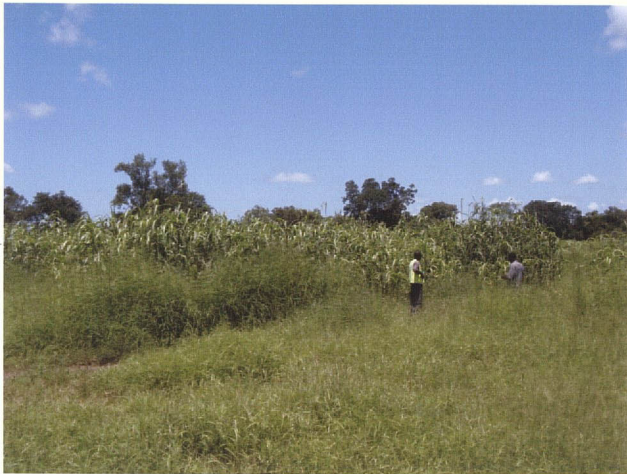
# Photos



Grass field on the laterite crust plateau with yellow flowers



High grass and trees on the laterite crust plateau



Millet plantation field near village



Cotton plantation field



Cows drink water beside road



Vehicle goes across a small stream



Left side photos were taken  
in the dry season (Jan. 2001)

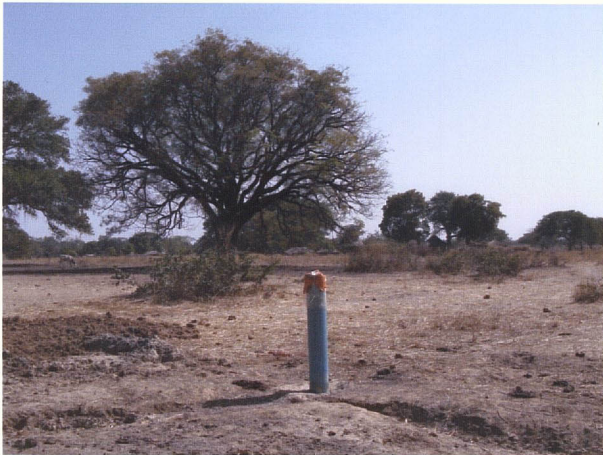


Right side photos were taken  
in the rainy season (Sep. 2001)



Baoule river : This site is located in the northeast of the survey area, 15 km south of Dioila.

The difference of water level between both season is about 4 meters.



MJMB-E1 : The height of the PVC casing pipe is 90 cm.

Water level is 5.77 m in the dry season and 2.76 m in the rainy season.



Upper stream of Banifing river (WR10) :

The width is 14.1 m and the maximum depth is 1.25 m, measured in the rainy season.

Photos were taken on the bridge of the Route 7.





Sampling from river in the rainy season (WR07)



Banifing river (stagnant water)  
Sampling from river in the dry season (WR14)



Sampling from water well in the rainy season (WW11)



Sampling from water well in the dry season (WW15)



Sampling from drill hole in the rainy season  
(MJMB-E4, WD06)



Sampling from drill hole in the dry season  
(MJMB-E4, WD06)





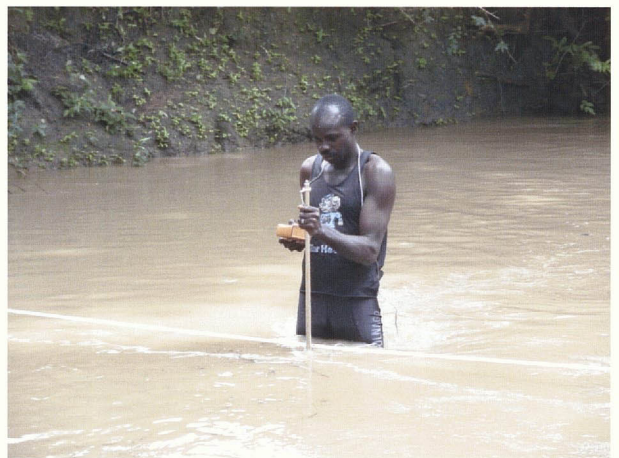
Measurement of river width (WR08)  
Width : 8.40m, Max. depth : 0.90m



Measurement of river depth (WR11)  
Width : 4.15m, Max. depth : 0.65m



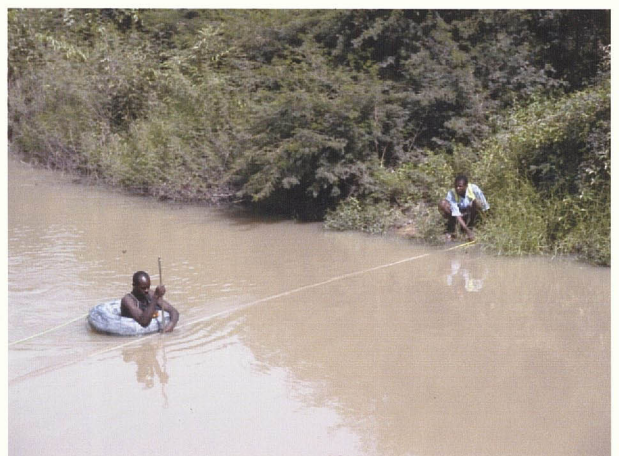
Baoule river  
Measurement of river depth (WR15)  
Width : 56.00m, Max. depth : 2.20m



Measurement of flow speed (WR13)  
Max. depth : 0.80m, Max. flow speed : 0.632m/s



Measurement of flow speed (WR11)  
Max. depth : 0.65m, Max. flow speed : 0.732m/s



Measurement of flow speed (WR10)  
Max. depth : 1.25m, Max. flow speed : 0.298m/s

Photo 4 La recherche de la quantité du courant des rivières





Total system of meteorological observation (photo taken in the dry season)



Total system (photo taken in the rainy season)



Storages for data measured and batteries



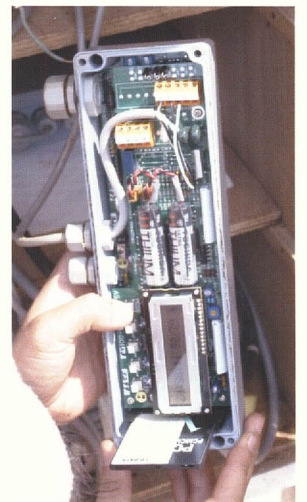
Sensors for wind speed, insolation and wind direction (left to right)



Sensor for precipitation



Sensors for temperature and humidity



Data transfer from memory to PC card





Sampling site of soil for SS317



Sampling site of soil for SS306



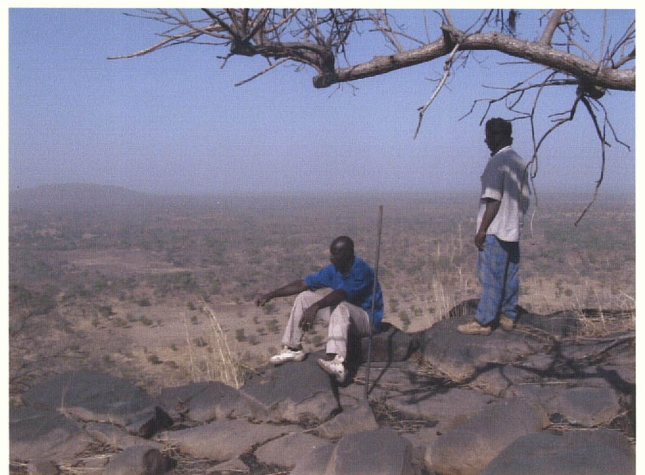
Sampling site of stream sediment for FS79  
The bridge is of Route 7.



Sampling site of stream sediment for FS74



Sampling site for R03 of arkose sandstone;  
in the Banifing river (no flow)



Sampling site for R14 of diorite;  
on the top of Diguidiguikourou hill





Set the survey section:  $20 \times 25 = 500 \text{ m}^2$



Scenery for the survey



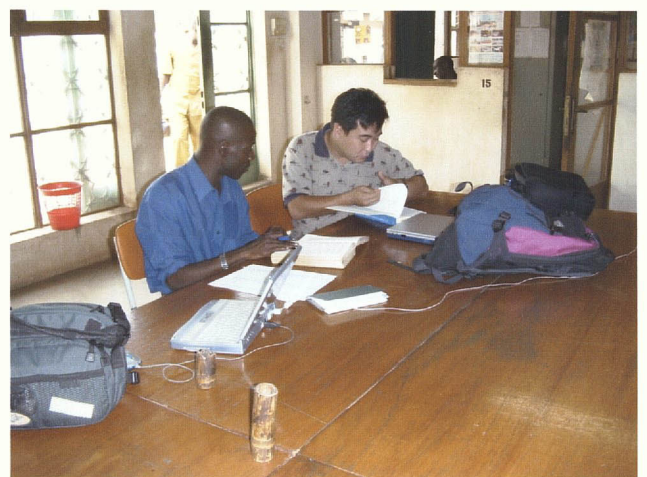
Scenery for the survey



The same site of the left photo in the dry season  
Some trees were cut by local people.



Check the tree name by leaves



Study the tree name by illustrated books



WD01-01R



WD01-02D



WD02-01R



WD02-02D



WD03-01R



WD03-02D



WD06-01R



WD06-02D



WR01-01R



WR05-01R



WR06-01R



WR07-01R



WR08-01R



WR09-01R



WR10-01R



WR11-01R



WR12-01R



WR13-01R



WR14-02D



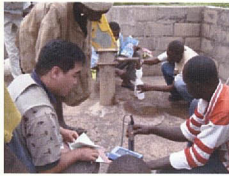
WR15-02D



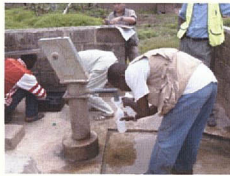
WW07-01R



WW10-01R



WW11-01R



WW12-01R



WW13-01R



WW14-01R



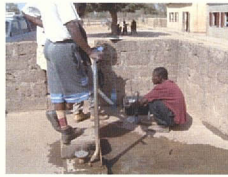
WW15-02D



WW16-02D



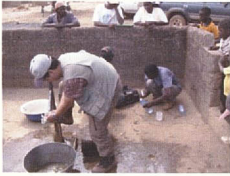
WW17-02D



WW18-02D



WW19-02D



WW20-02D



Photo 8 Les points de prélèvement des échantillons de l'eau



WR01-01R



WR05-01R



WR06-01R



WR07-01R



WR08-01R



WR09-01R



WR10-01R



WR11-01R



WR12-01R



WR13-01R



WR15-02D



Photo 9 Les points de la recherche de la quantité du courant des rivières