

写 真



Grass field on the laterite crust plateau with yellow flowers



High grass and trees on the laterite crust plateau



Millet plantation field near village



Cotton plantation field



Cows drink water beside road



Vehicle goes across a small stream

写真1 雨季の自然環境

Left side photos were taken
in the dry season (Jan. 2001)

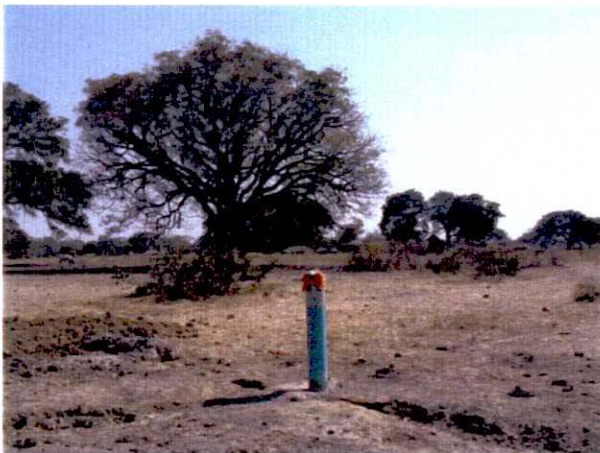


Right side photos were taken
in the rainy season (Sep. 2001)



Baoule river : This site is located in the northeast of the survey area, 15 km south of Dioila.

The difference of water level between both season is about 4 meters.



MJMB-E1 : The height of the PVC casing pipe is 90 cm.

Water level is 5.77 m in the dry season and 2.76 m in the rainy season.



Upper stream of Banifing river (WR10) :

The width is 14.1 m and the maximum depth is 1.25 m, measured in the rainy season.

Photos were taken on the bridge of the Route 7.



Sampling from river in the rainy season (WR07)



Banifing river (stagnant water)
Sampling from river in the dry season (WR14)



Sampling from water well in the rainy season (WW11)



Sampling from water well in the dry season (WW15)



Sampling from drill hole in the rainy season
(MJMB-E4, WD06)



Sampling from drill hole in the dry season
(MJMB-E4, WD06)

写真3 地表水および地下水調査



Measurement of river width (WR08)
Width : 8.40m, Max. depth : 0.90m



Measurement of river depth (WR11)
Width : 4.15m, Max. depth : 0.65m



Baoule river
Measurement of river depth (WR15)
Width : 56.00m, Max. depth : 2.20m



Measurement of flow speed (WR13)
Max. depth : 0.80m, Max. flow speed : 0.632m/s



Measurement of flow speed (WR11)
Max. depth : 0.65m, Max. flow speed : 0.732m/s



Measurement of flow speed (WR10)
Max. depth : 1.25m, Max. flow speed : 0.298m/s

写真4 河川流量調査



Total system of meteorological observation
(photo taken in the dry season)



Total system (photo taken in the rainy season)



Storages for data measured and batteries



Sensors for wind speed, insolation
and wind direction (left to right)



Sensor for precipitation



Sensors for temperature
and humidity



Data transfer
from memory to PC card



Sampling site of soil for SS317



Sampling site of soil for SS306



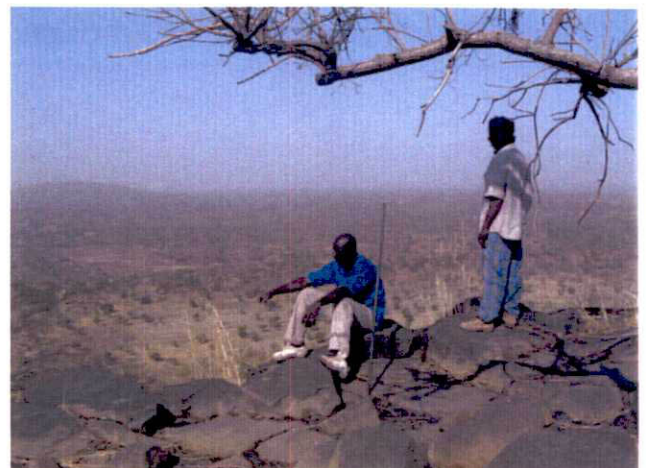
Sampling site of stream sediment for FS79
The bridge is of Route 7.



Sampling site of stream sediment for FS74



Sampling site for R03 of arkose sandstone;
in the Banifing river (no flow)



Sampling site for R14 of diorite;
on the top of Diguikourou hill



Set the survey section; $20 \times 25 = 500 \text{ m}^2$



Scenery for the survey



Scenery for the survey



The same site of the left photo in the dry season
Some trees were cut by local people.



Check the tree name by leaves



Study the tree name by illustrated books

WD01-01R



WD01-02D



WD02-01R



WD02-02D



WD03-01R



WD03-02D



WD06-01R



WD06-02D



WR01-01R



WR05-01R



WR06-01R



WR07-01R



WR08-01R



WR09-01R



WR10-01R



WR11-01R



WR12-01R



WR13-01R



WR14-02D



WR15-02D



WW07-01R



WW10-01R



WW11-01R



WW12-01R



WW13-01R



WW14-01R



WW15-02D



WW16-02D



WW17-02D



WW18-02D



WW19-02D



WW20-02D



写真8 水試料採取地点

WR01-01R



WR05-01R



WR06-01R



WR07-01R



WR08-01R



WR09-01R



WR10-01R



WR11-01R



WR12-01R



WR13-01R



WR15-02D



写真9 河川流量調査地点

R01-S1



R01-S2



R02-S1



R02-S2



R03-S1



R03-S2



R04-S1



R04-S2



R04-S3



R05-S1



R05-S2



R05-S3



R06-S1



R06-S2



R07-S1



R07-S2



R08-S1



R08-S2



R09-S1



R09-S2



R09-S3



R10-S1



R10-S2



R11-S1



R11-S2



R11-S3



R12-S1



R12-S2



R12-S3



R13-S1



R13-S2



R13-S3



R14-S1



R14-S2



R14-S3



R15-S1



R15-S2



R16-S1



R16-S2



R17-S1



写真10 土壤試料採取地点 (1/9)

R17-S2



R17-S3



R18-S1



R18-S2



R18-S3



R19-S1



R19-S2



R20-S1



R20-S2



R20-S3



SS201



SS202



SS203



SS204



SS205



SS206



SS207



SS208



SS209



SS210



SS211



SS212



SS213



SS214



SS215



SS216



SS217



SS218



SS219



SS220



SS221



SS222



SS223



SS224



SS225



SS226



SS227



SS228



SS229



SS230



SS231



SS232



SS233



SS234



SS235



SS236



SS237



SS238



SS239



SS240



SS241



SS242



SS243



SS244



SS245



SS246



SS247



SS248



SS249



SS250



SS251



SS252



SS253



SS254



SS255



SS256



SS257



SS258



SS259



SS260



SS261



SS262



SS263



SS264



SS265



SS266



SS267



SS268



SS269



SS270



写真10 土壤試料採取地点 (3/9)

SS271



SS272



SS273



SS274



SS275



SS276



SS277



SS278



SS279



SS280



SS281



SS282



SS283



SS284



SS285



SS286



SS287



SS288



SS289



SS290



SS291



SS292



SS293



SS294



SS295



SS296



SS297



SS298



SS299



SS300



SS301



SS302



SS303



SS304



SS305



SS306



SS307



SS308



SS309



SS310



写真10 土壤試料採取地点 (4/9)

SS311



SS312



SS313



SS314



SS315



SS316



SS317



SS318



SS319



SS320



SS321



SS322



SS323



SS324



SS325



SS326



SS327



SS328



SS329



SS330



SS331



SS332



SS333



SS334



SS335



SS336



SS337



SS338



SS339



SS340



SS341



SS342



SS343



SS344



SS345



SS346



SS347



SS348



SS349



SS350



写真10 土壤試料採取地点 (5/9)

SS351



SS352



SS353



SS354



SS355



SS356



SS357



SS358



SS359



SS360



SS361



SS362



SS363



SS364



SS365



SS366



SS367



SS368



SS369



SS370



SS371



SS372



SS373



SS374



SS375



SS376



SS377



SS378



SS379



SS380



SS381



SS382



SS383



SS384



SS385



SS386



SS387



SS388



SS389



SS390



写真10 土壤試料採取地点 (6/9)

SS391



SS392



SS393



SS394



SS395



SS396



SS397



SS398



SS399



SS400



SS401



SS402



SS403



SS404



SS405



SS406



SS407



SS408



SS409



SS410



SS411



SS412



SS413



SS414



SS415



SS416



SS417



SS418



SS419



SS420



SS421



SS422



SS423



SS424



SS425



SS426



SS427



SS428



SS429



SS430



写真10 土壤試料採取地点 (7/9)

SS431



SS432



SS433



SS434



SS435



SS436



SS437



SS438



SS439



SS440



SS441



SS442



SS443



SS444



SS445



SS446



SS447



SS448



SS449



SS450



SS451



SS452



SS453



SS454



SS455



SS456



SS457



SS458



SS459



SS460



SS461



SS462



SS463



SS464



SS465



SS466



SS467



SS468



SS469



SS470



写真10 土壤試料採取地点 (8/9)

SS471



SS472



SS473



SS474



SS475



SS476



SS477



SS478



SS479



SS480



SS481



SS482



SS483



SS484



SS485



SS486



SS487



SS488



SS489



SS490



SS491



SS492



SS493



SS494



SS495



SS496



SS497



SS498



SS499



SS500



写真10 土壤試料採取地点 (9/9)

FS051



FS052



FS053



FS054



FS055



FS056



FS057



FS058



FS059



FS060



FS061



FS062



FS063



FS064



FS065



FS066



FS067



FS068



FS069



FS070



FS071



FS072



FS073



FS074



FS075



FS076



FS077



FS078



FS079



FS080



FS081



FS082



FS083



FS084



FS085



FS086



FS087



FS088



FS089



FS090



写真11 河床堆積物試料採取地点 (1/2)

FS091



FS092



FS093



FS094



FS095



FS096



FS097



FS098



FS099



FS100



写真11 河床堆積物試料採取地点 (2/2)

R01



R02



R03



R04



R05



R06



R07



R08



R09



R10



R11



R12



R13



R14



R15



R16



R17



R18



R19



R20



写真12 岩石試料採取地点