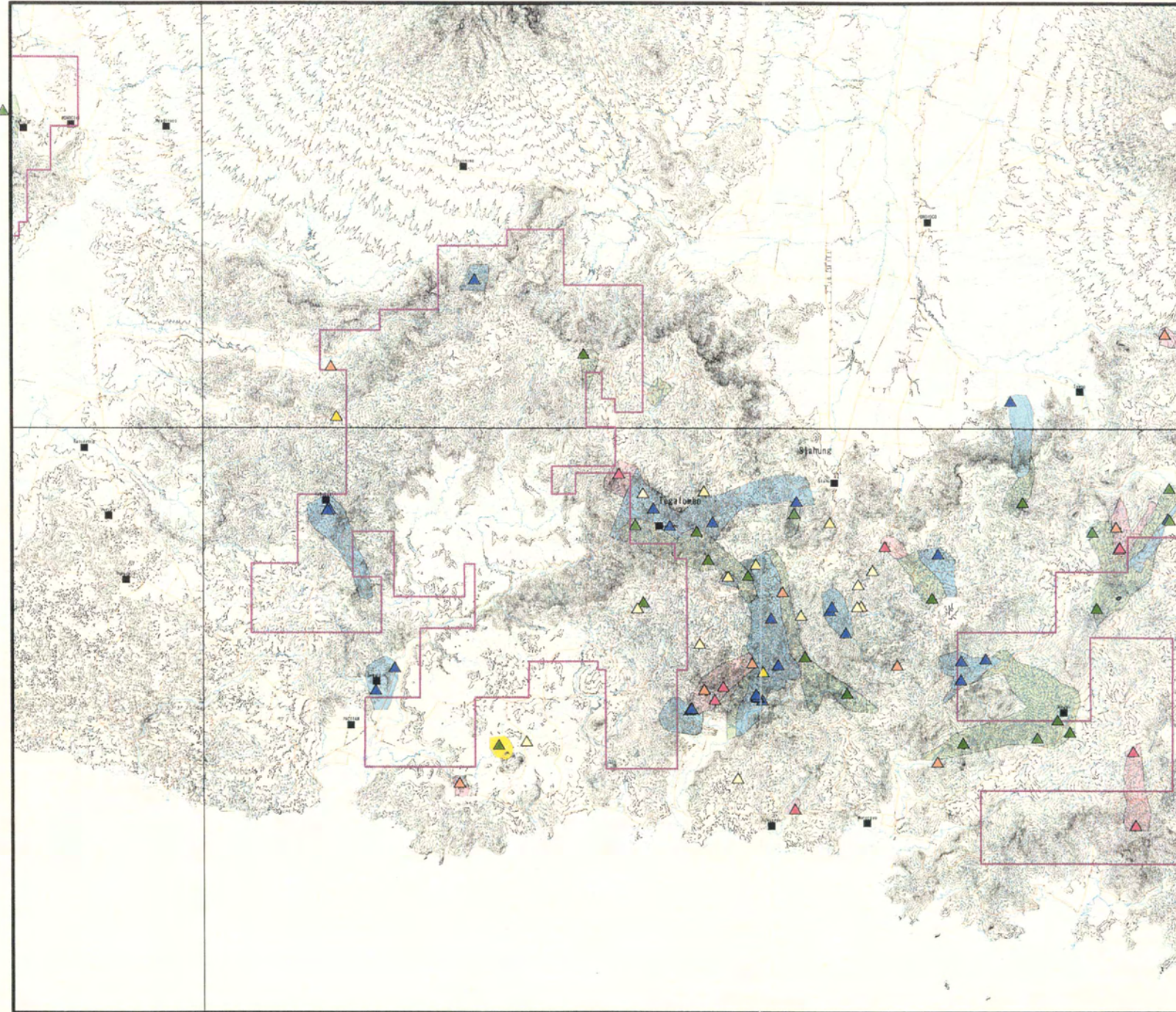


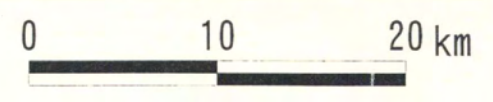
第 2-15図 流体包有物測定結果図

111° E



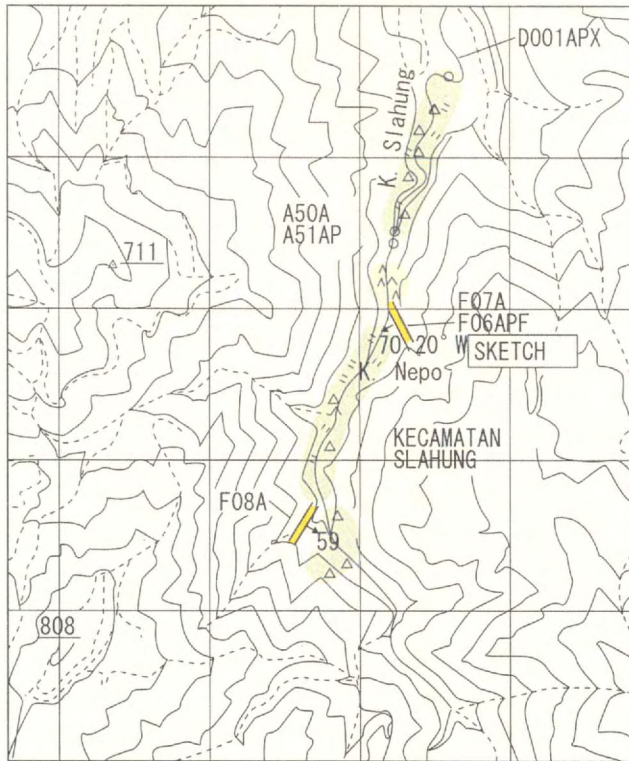
- Alteration Mineral
- ▲ ka
 - ▲ se
 - ▲ se/sme
 - ▲ chl/sme
 - ▲ chl
 - ▲ cal
 - ▲ syp
 - ▲ py
 - ▲ -
- Survey_area
Concessions
City
Road
- Alteration_zone
- Kaolin zone
 - Sericite zone
 - Mixed-layered minerals zone

8° S



第2-16図 変質鉱物分帯図

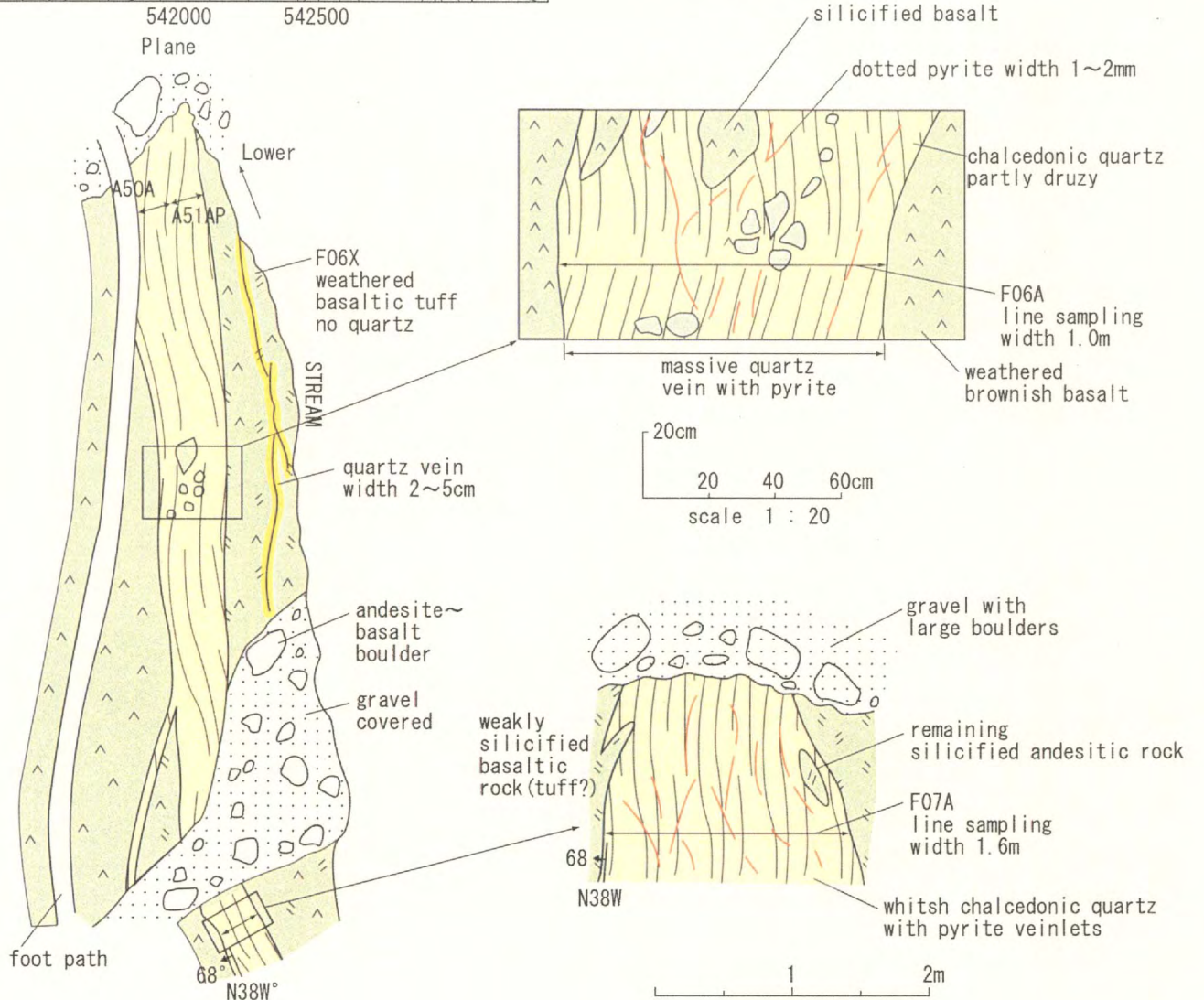
K. Nepo Mineralized Area



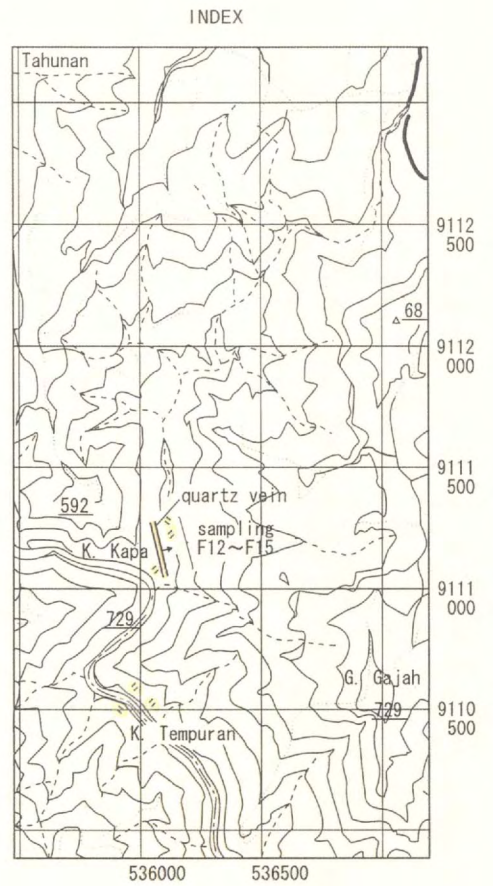
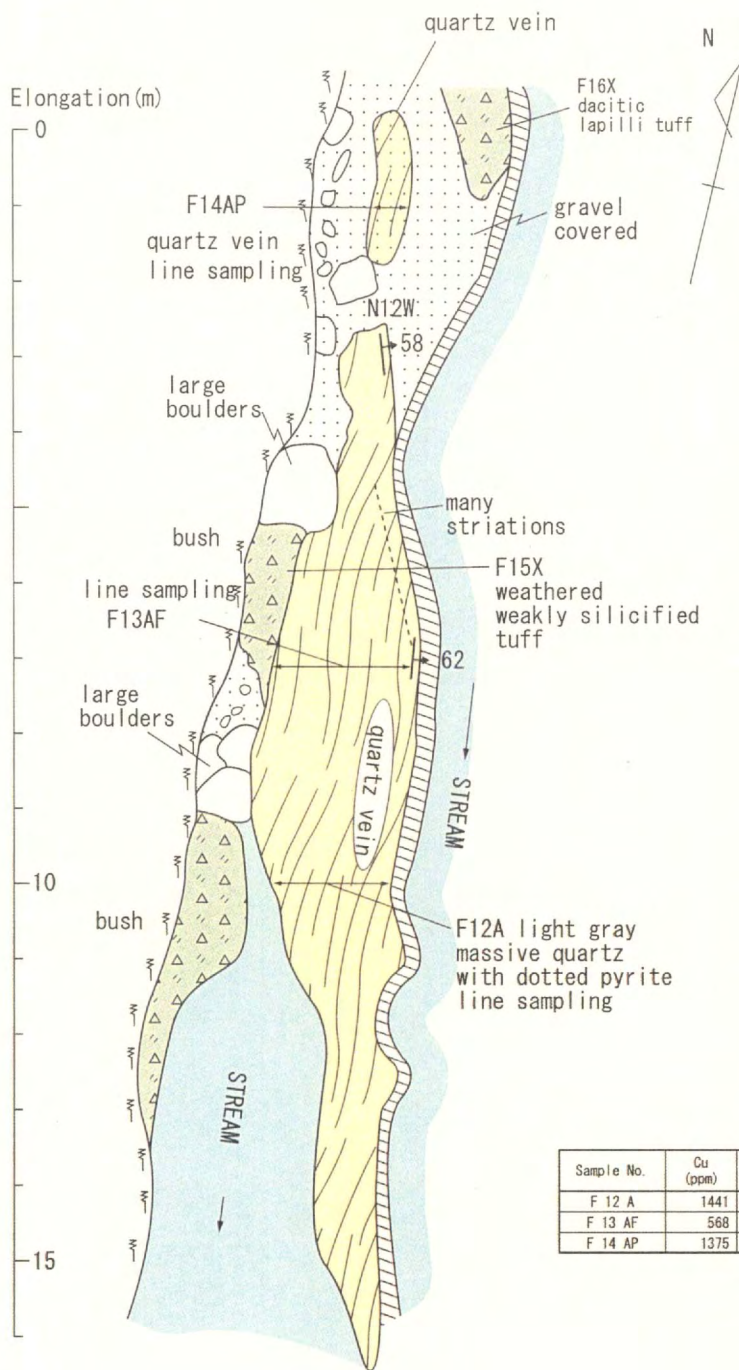
Legend

- andesitic tuffs
- basalt
- quartz vein
- pyrite / pyritization

Sample No.	Cu (ppm)	Pb (ppm)	Zn (ppm)	Ag (ppm)	Sb (ppm)	Au (ppb)	Hg (ppb)	As (ppm)
A 50 A	117	184	589	3	1.25	16	404	<0.5
A 51 AP	379	145	48	4	1.0	20	250	4
F 06 APF	149	407	122	2	0.75	130	425	<0.5
F 07 A	99	144	441	2	2.5	48	325	<0.5
F 08 A	14	69	8	1	0.5	42	425	12

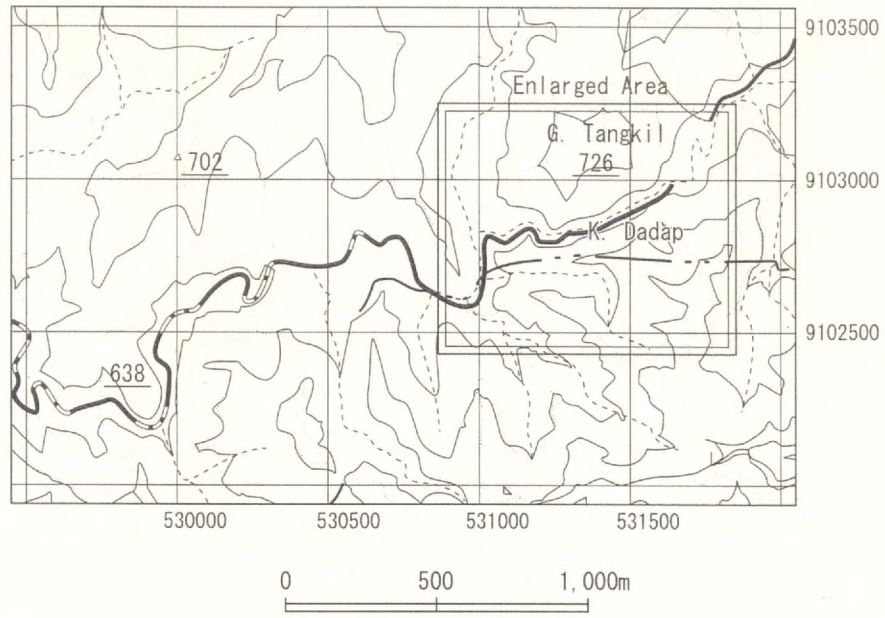


第2-17図 鉱徴地スケッチ (1) Tegalombo地区の①

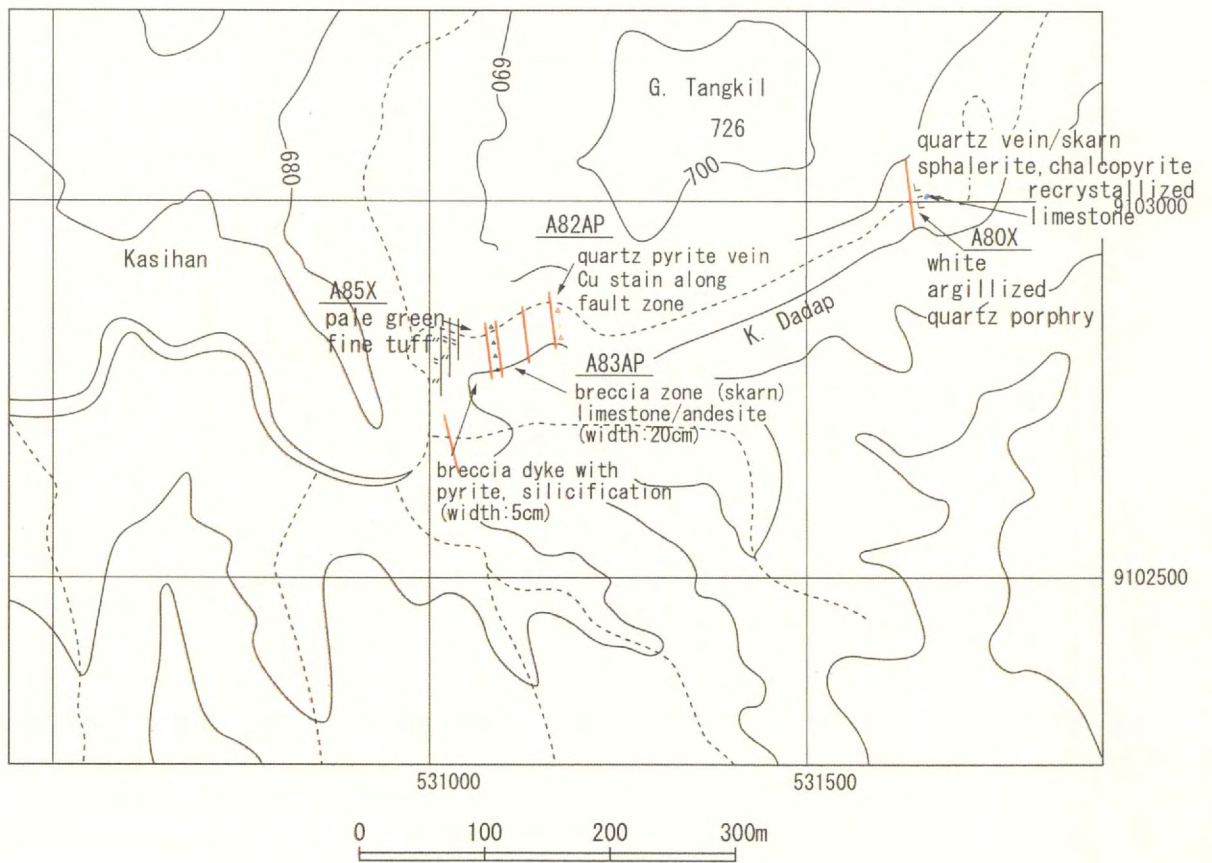


Sample No.	Cu (ppm)	Pb (ppm)	Zn (ppm)	Ag (ppm)	Sb (ppm)	Au (ppb)	Hg (ppb)	As (ppm)
F 12 A	1441	47	177	4	1.0	52	75	4
F 13 AF	568	47	454	4	0.75	46	0.1	<0.5
F 14 AP	1375	127	964	3	1.25	42	0.1	<0.5

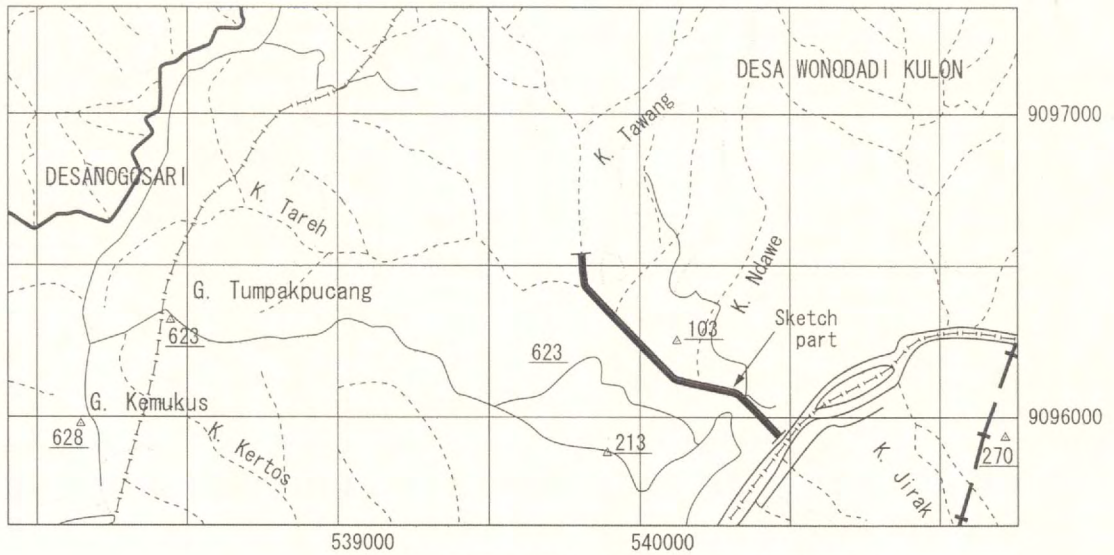
第2-18図 鉱徴地スケッチ (2) Tegalombo地区の②



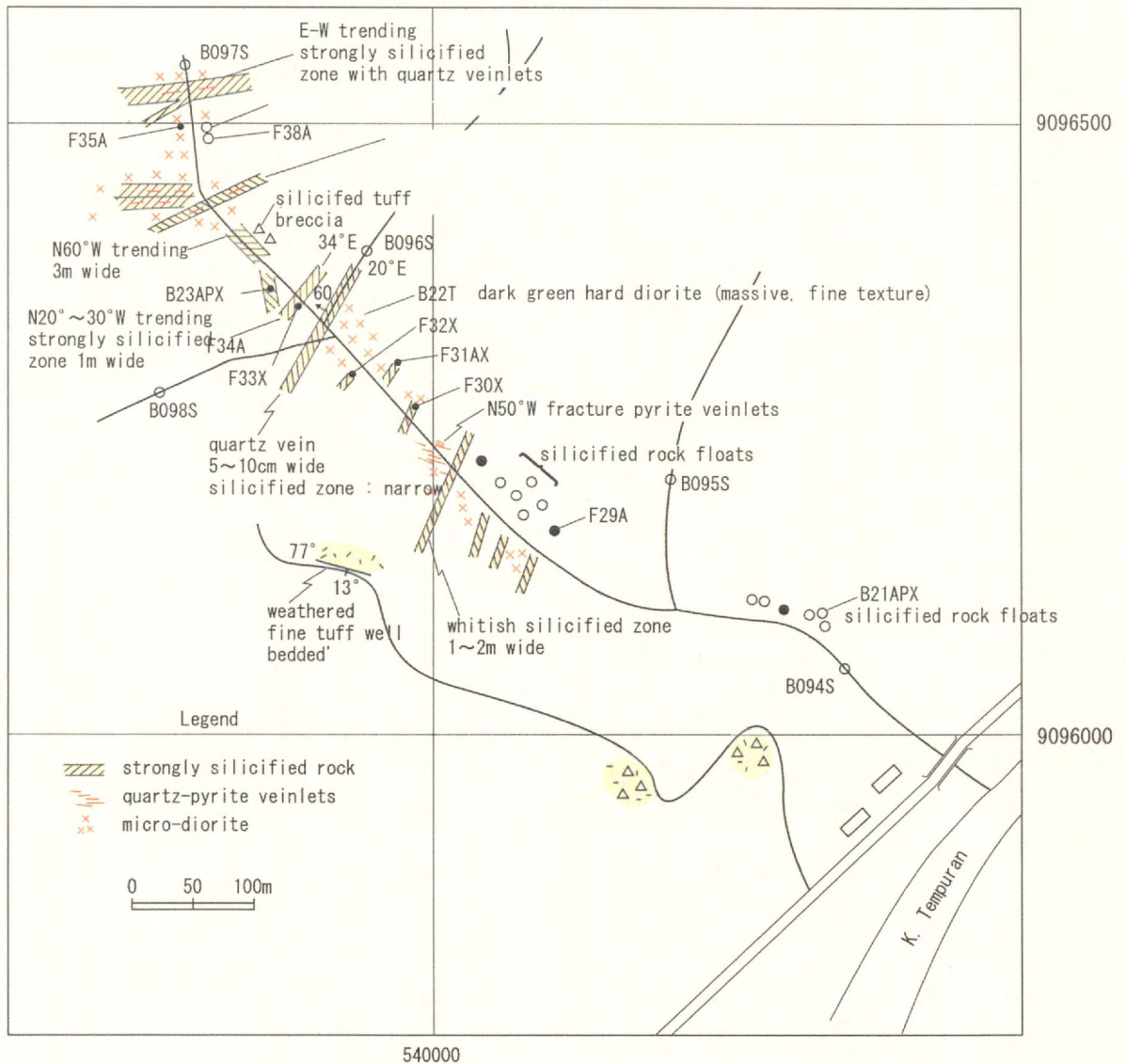
Sample No.	Cu (ppm)	Pb (ppm)	Zn (ppm)	Ag (ppm)	Sb (ppm)	Au (ppb)	Hg (ppb)	As (ppm)
A 82 AP	94	12	2253	2	<0.5	16	2925	16
A 83 AP	281	357	11210	6	1.25	30	793	12



第2-19図 鉱徴地スケッチ (3) Kasihan地区



Sample No.	Cu (ppm)	Pb (ppm)	Zn (ppm)	Ag (ppm)	Sb (ppm)	Au (ppb)	Hg (ppb)	As (ppm)
B 21 APX	20	48	96	2	1.25	42	250	24
B 23 APX	36	79	151	3	0.5	116	250	580
F 29 A	857	20	12	6	1.5	52	175	4
F 31 AX	865	4598	14160	18	1.25	288	1725	64
F 34 A	75	63	422	3	1.5	44	0	48
F 35 A	11	34	164	2	1.25	50	75	
F 38 A	68	43	408	5	1.0	58	0	88



第2-20図 鉱徴地スケッチ (4) Lorog川地区の①