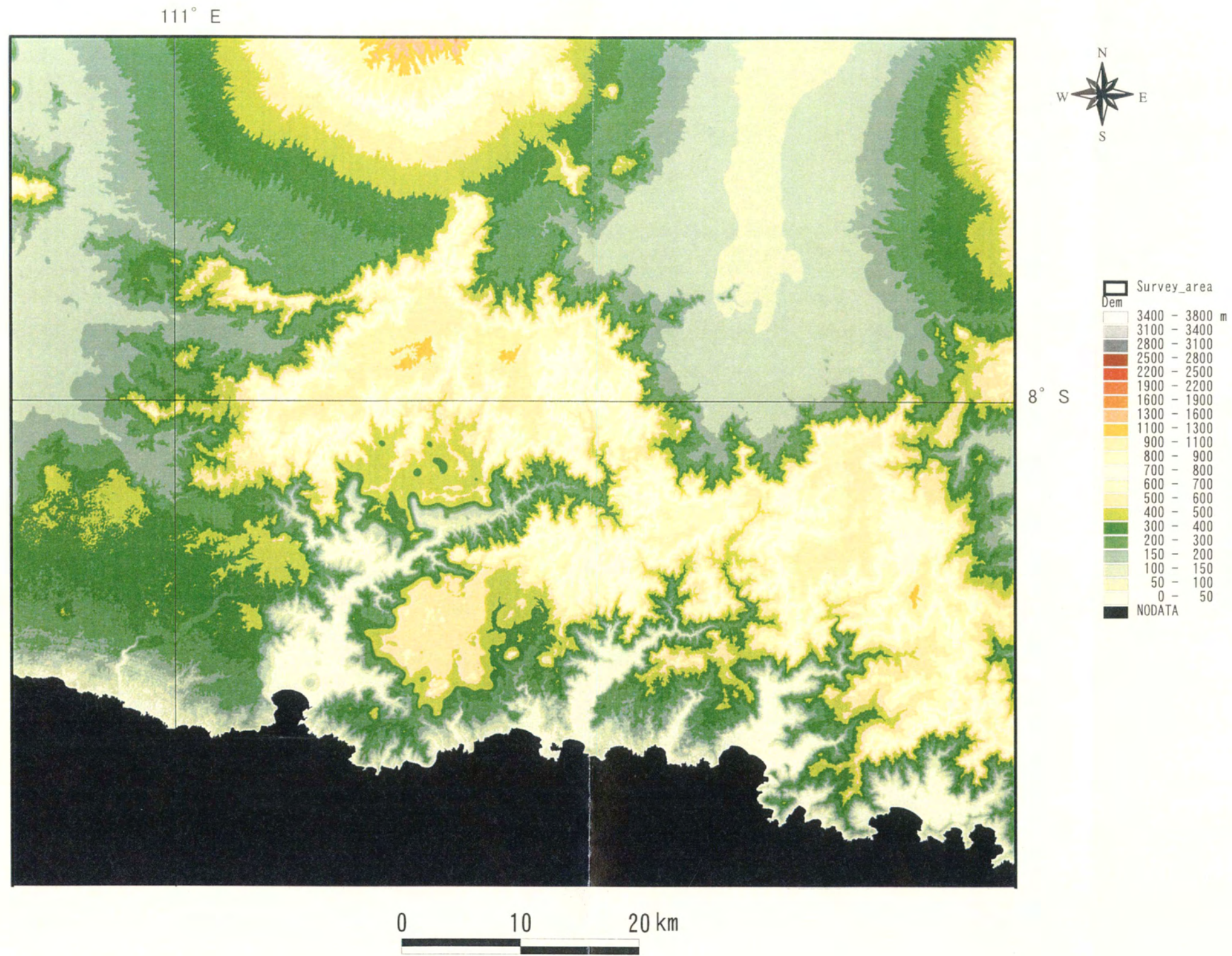
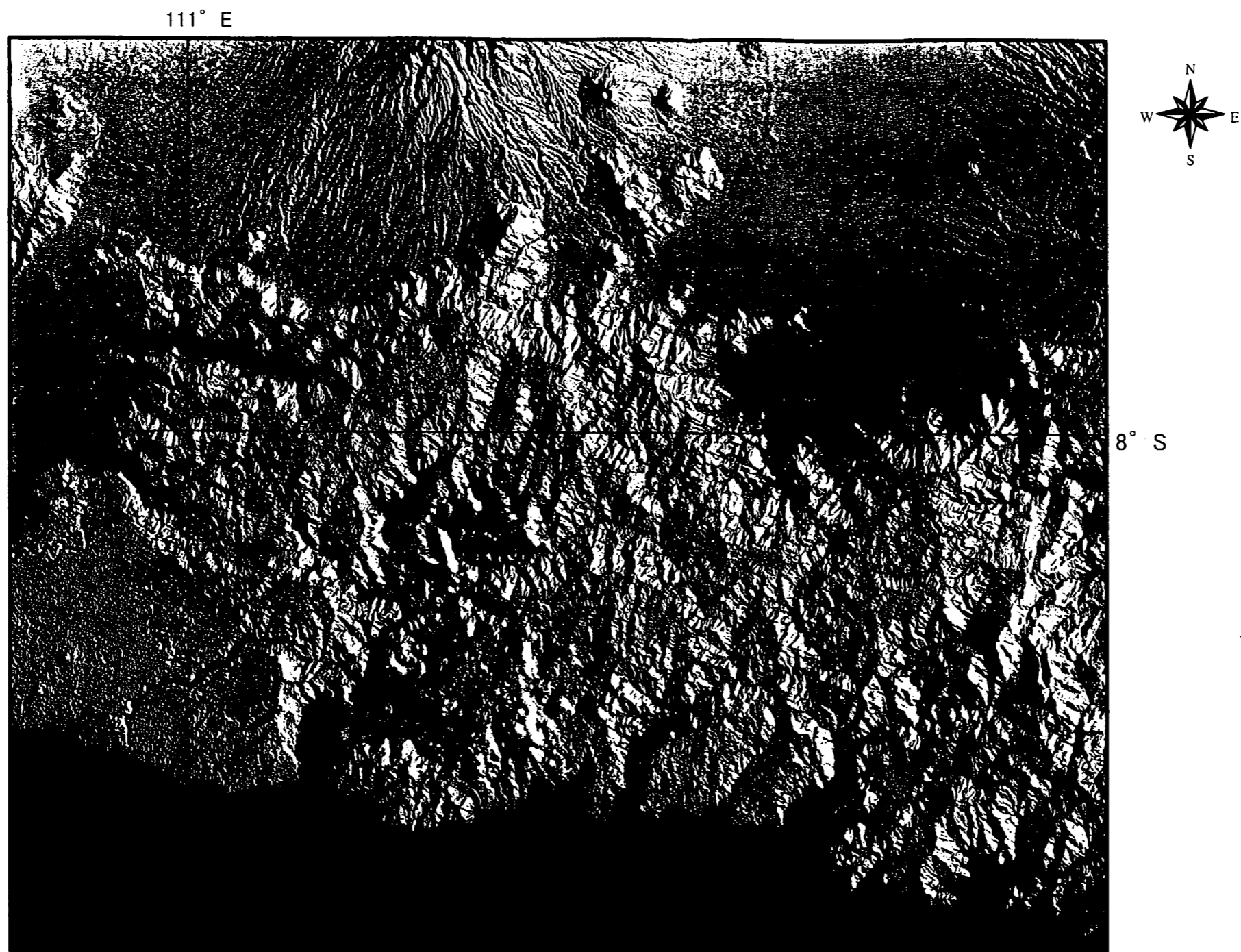


第2-3図 判読結果解析図



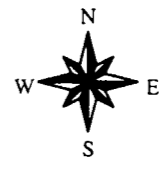
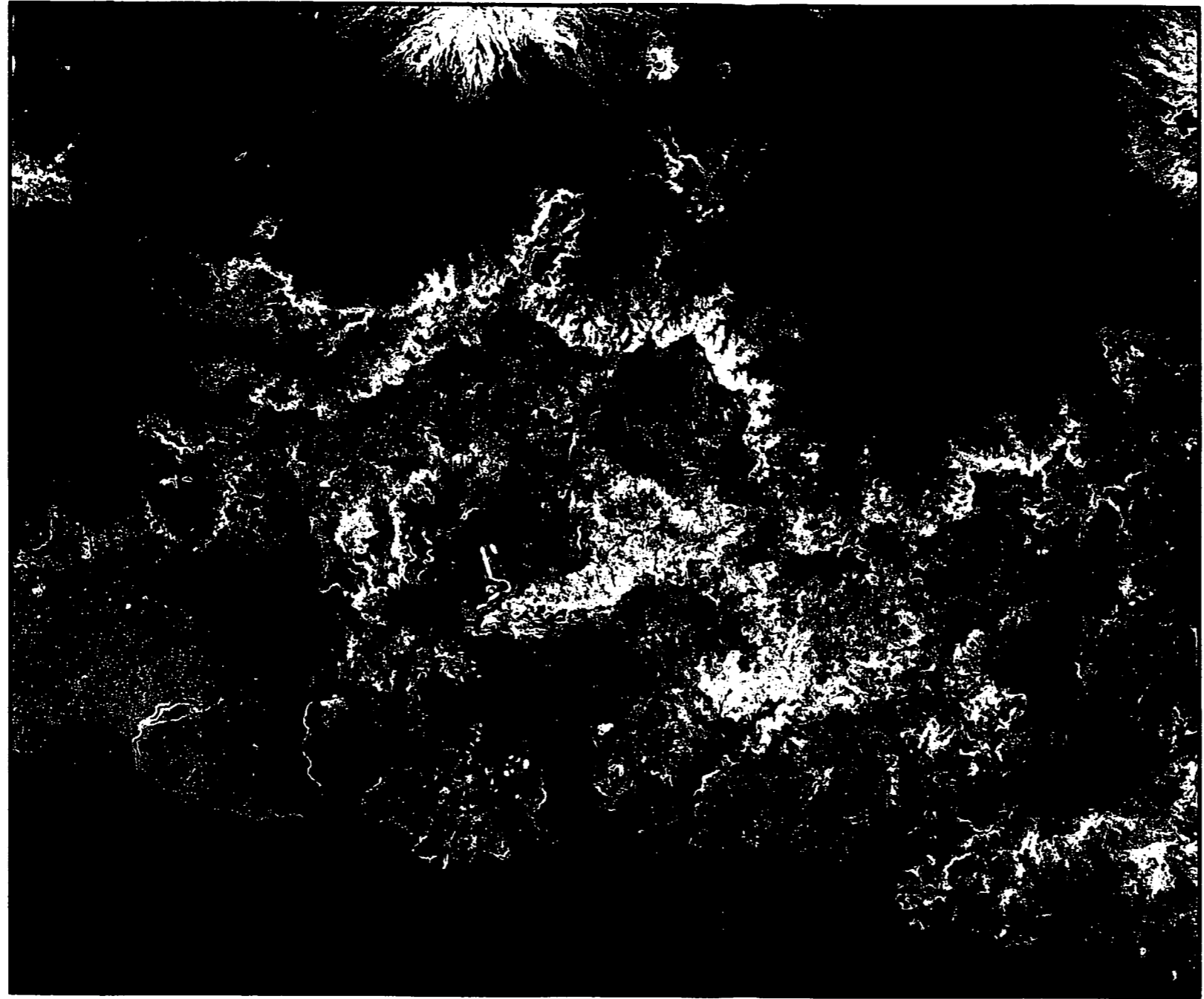
第2-4図 DEM画像



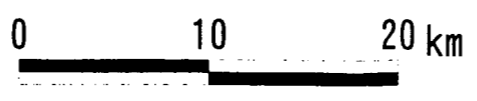
0 10 20 km

第2-5図 多方位光源陰影図

111° E

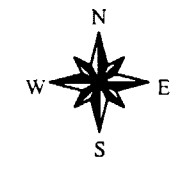
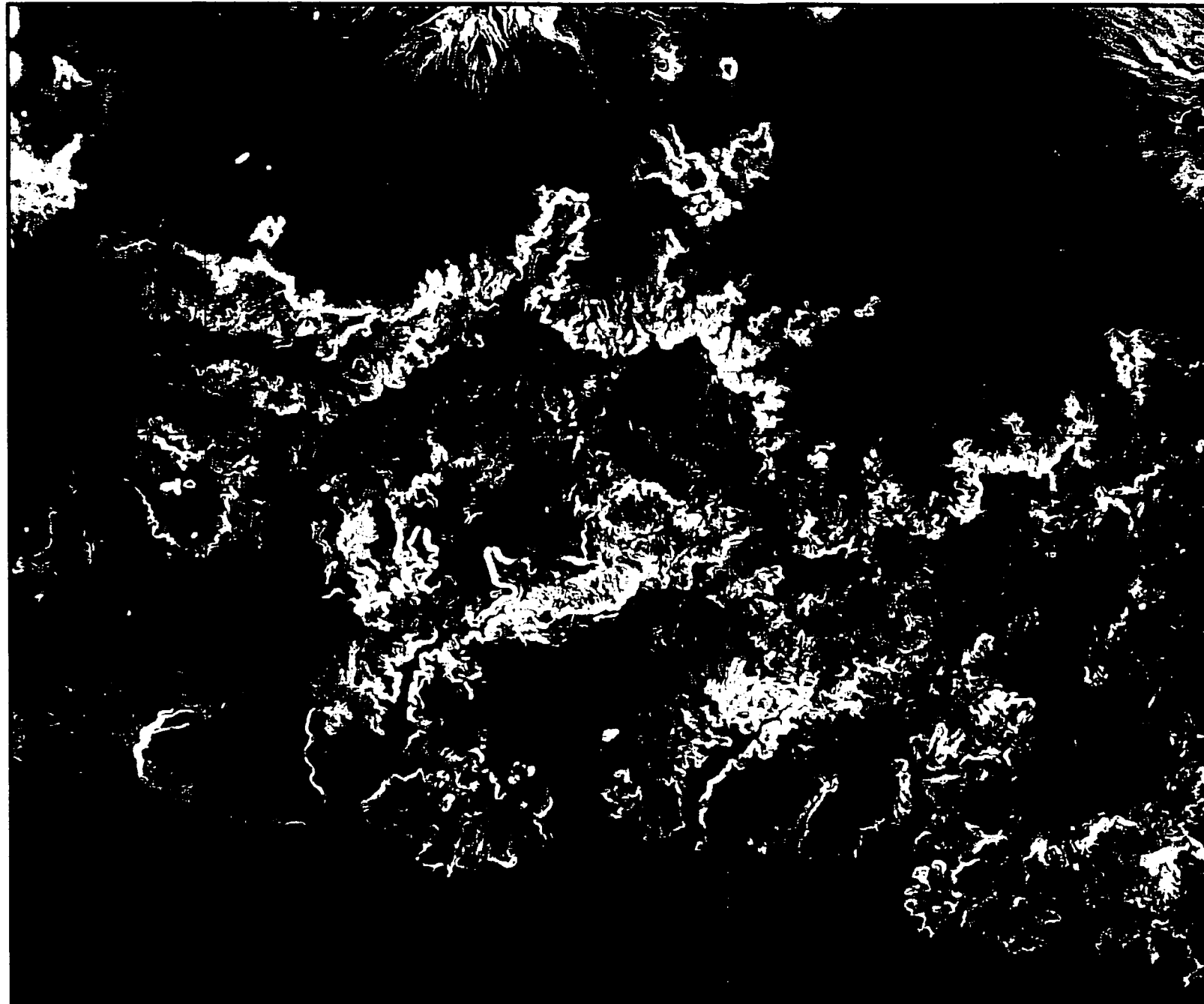


8° S



第2-6図 傾斜量図

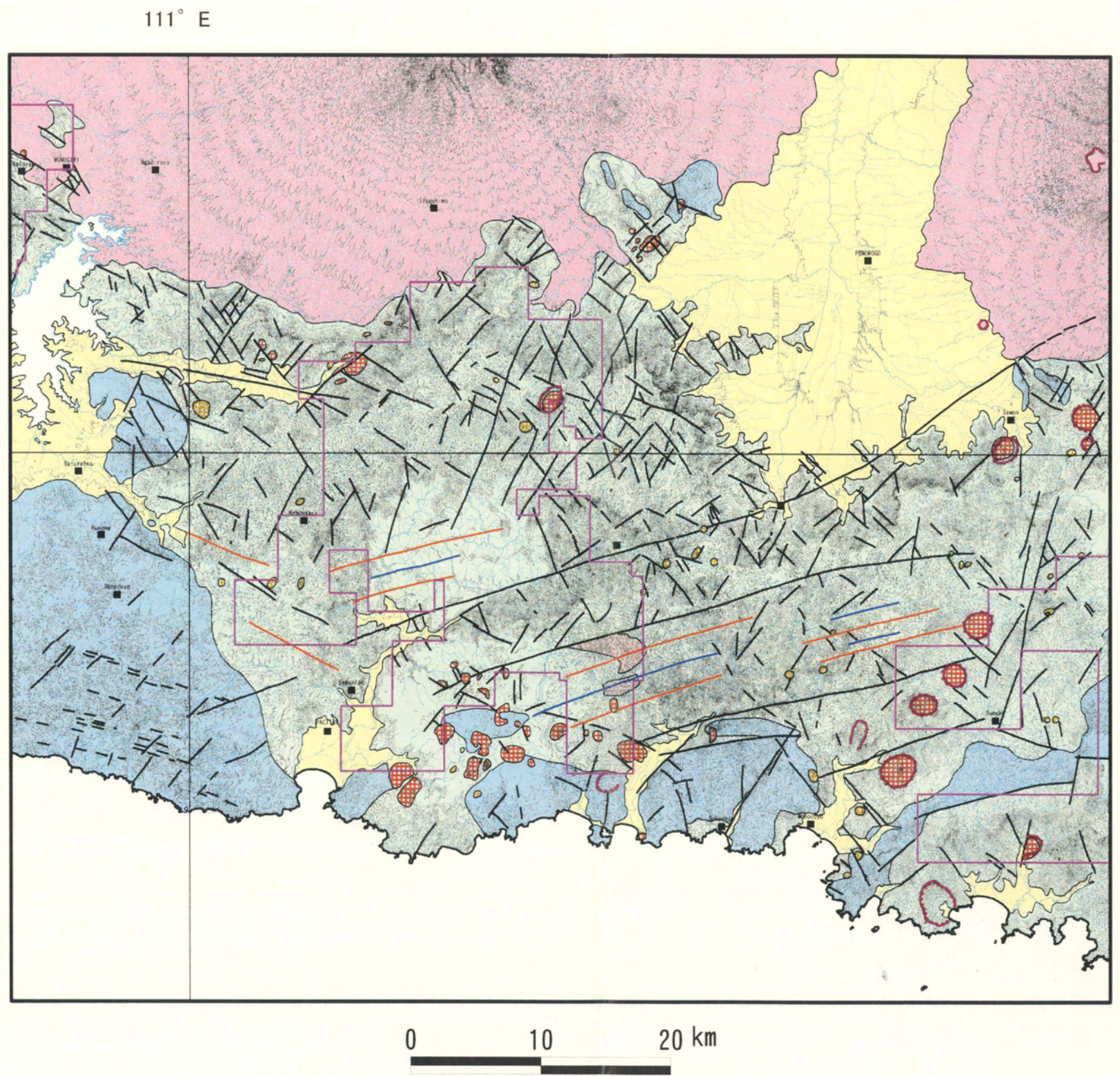
111° E



8° S

0 10 20 km

第2-7図 高度分散量異常図



- Survey_area
- Concessions
- City
- Ring structure
- Crater
- Dome
- Anticlinal axis
- Synclinal axis
- Lineament (Multi-shade images)
- Lineament (Dispersion Anomaly and Slope images)
- Geological Interpretation Map of DEM images
- lake
- Qa: Quaternary unconsolidated sediments
- Qv: Quaternary volcanics
- Tls: Tertiary limestone
- Tms: Tertiary sedimentary rocks
- Tv: Tertiary volcanics
- Intrusive rock
- D1: (Relatively larger body >1km)
- D2: (Relatively smaller body <1km)

8° S

第2-8図 リニアメント判読図