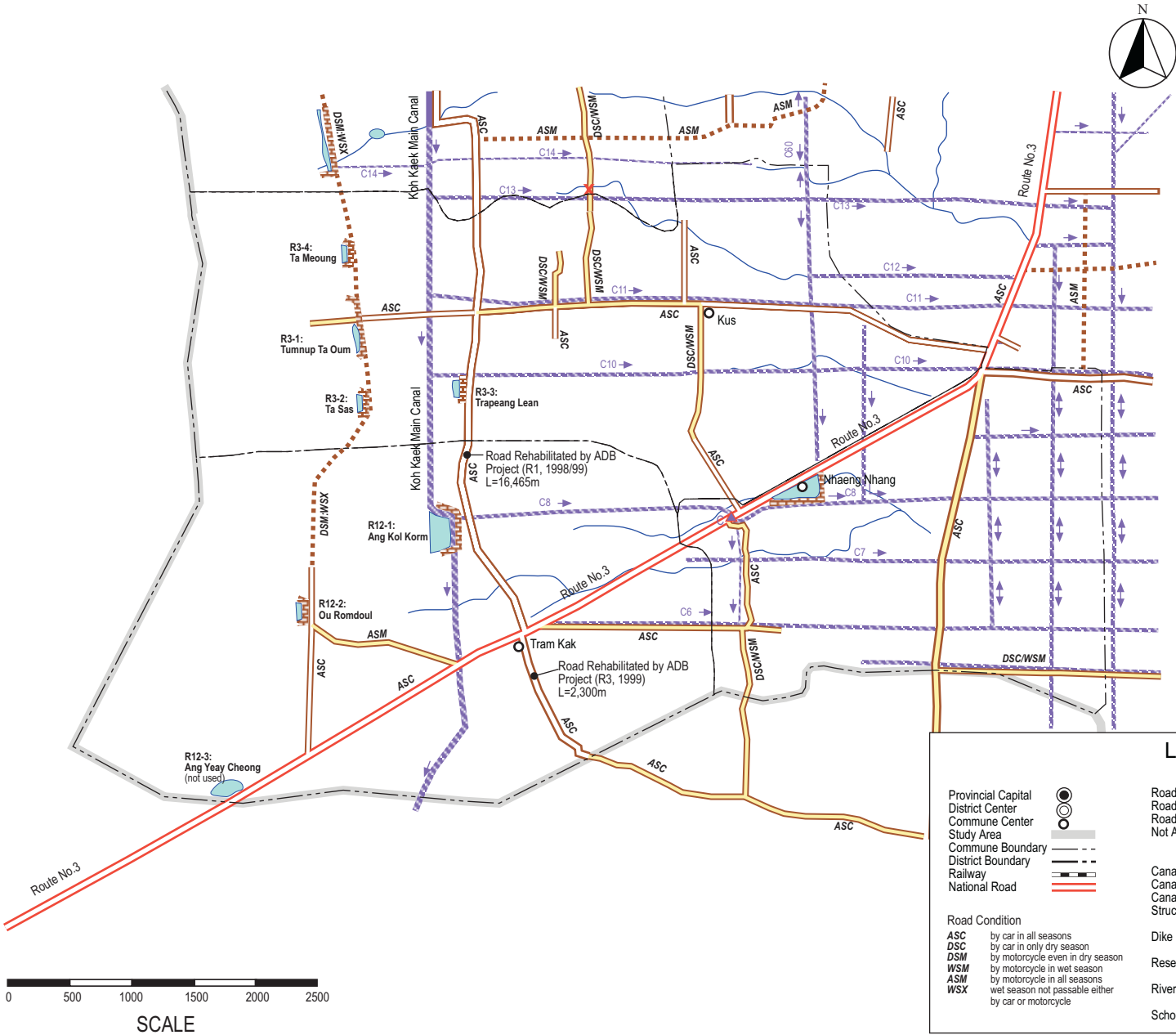


List of Communes

- Tram Kak District (Takeo)
 - 1-1 Angk Ta Saom
 - 1-2 Cheang Tong
 - 1-3 **Kus**
 - 1-4 Leay Bour
 - 1-5 **Nhaeng Nhang**
 - 1-6 Otdam Souriya
 - 1-7 O Saray
 - 1-8 Popeul
 - 1-9 Samraong
 - 1-10 Srae Ronoung
 - 1-11 Ta Phem
 - 1-12 **Tram Kak**
 - 1-13 Trapeang Thum Khang Cheung
 - 1-14 Trapeang Kranhung
 - 1-15 Trapeang Thum Khang Tbound
- Samraong District (Takeo)
 - 2-1 Lumchang
- Treang District (Takeo)
 - 3-1 Roneam
 - 3-2 Angk Kaev
 - 3-3 Khvav
- Basedth District (Kampong Spueu)
 - 4-1 Kat Phluk
 - 4-2 Pheakdei
 - 4-3 Phong
 - 4-4 Basedth



LEGEND

<ul style="list-style-type: none"> Provincial Capital District Center Commune Center Study Area Commune Boundary District Boundary Railway National Road 	<ul style="list-style-type: none"> Canal (Main) Canal (2nd) Canal (3rd) Structure Dike Reservoir / Pond River School 	<ul style="list-style-type: none"> Good/Fair Condition Poor Condition Being Used Not Used / Poor
--	--	--

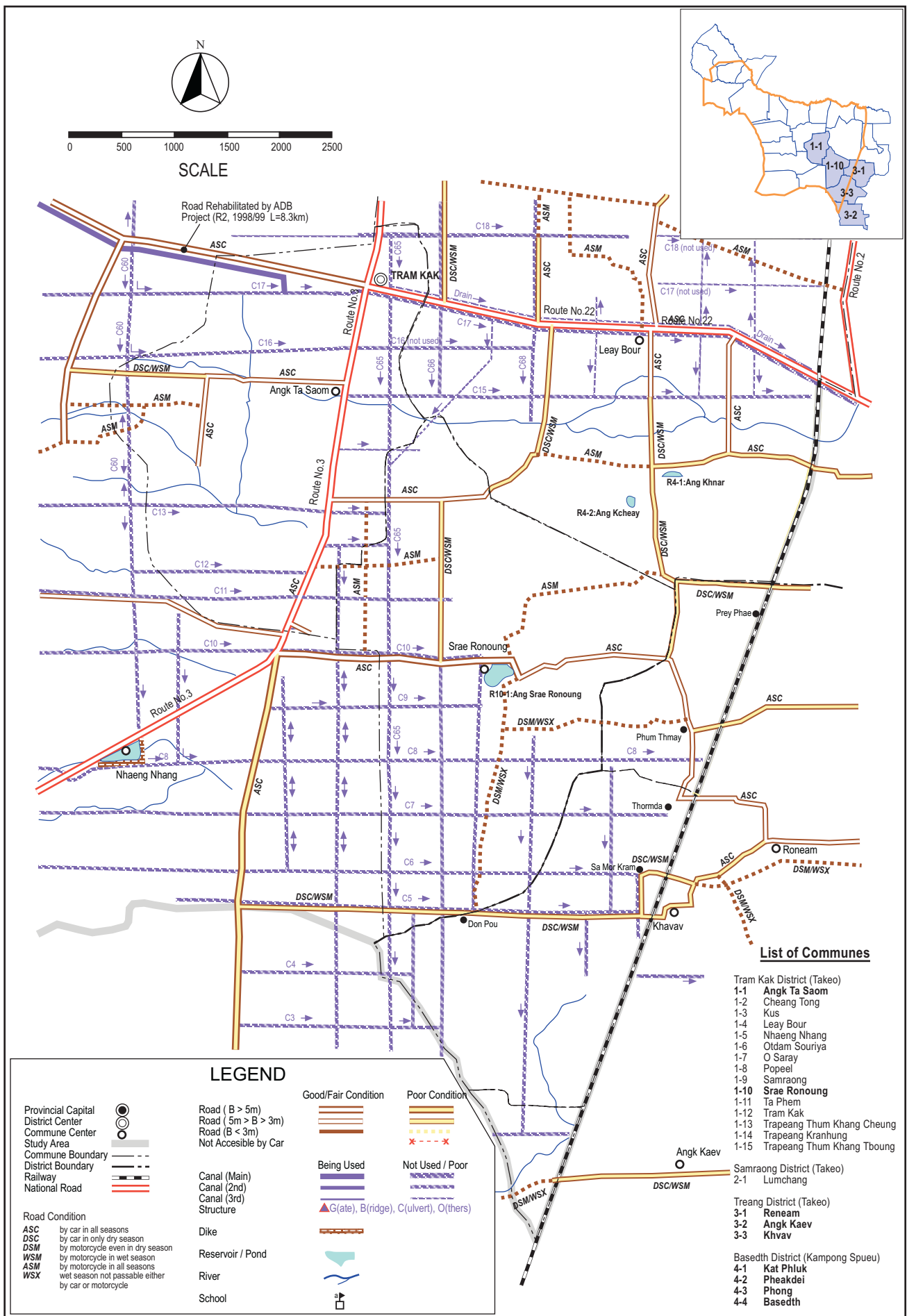
Road Condition

- ASC by car in all seasons
- DSC by car in only dry season
- DSM by motorcycle even in dry season
- WSM by motorcycle in wet season
- ASM by motorcycle in all seasons
- WSX wet season not passable either by car or motorcycle

The Study on The Rehabilitation and Reconstruction of Agricultural Production System in The Stakou River Basin, The Kingdom of Cambodia

Japan International Cooperation Agency

Fig. II-1.6.4 Present Condition of Canals and Roads in the Study Area (3/5)

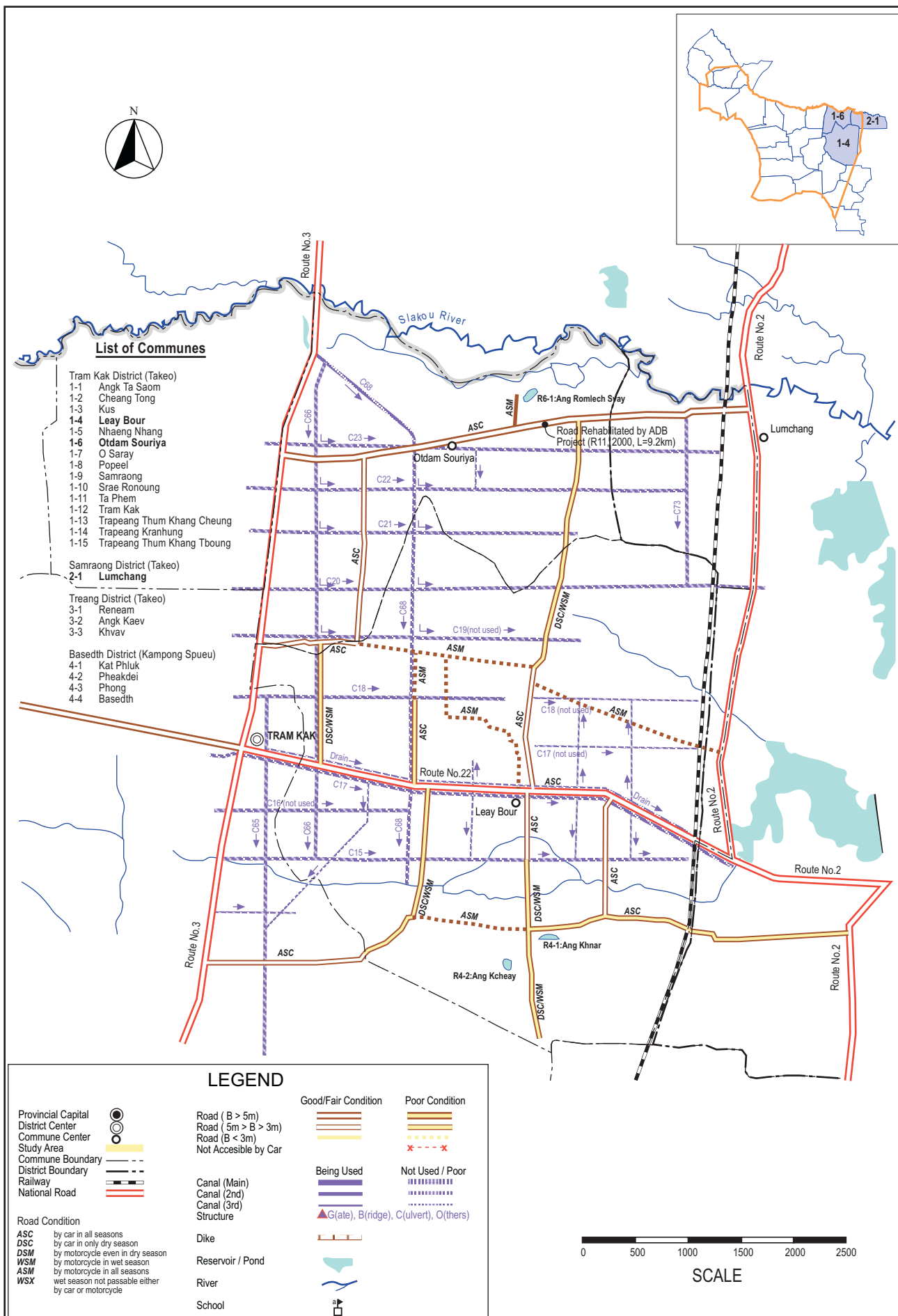


The Study on The Rehabilitation and Reconstruction of Agricultural Production System in The Slakou River Basin, The Kingdom of Cambodia

Japan International Cooperation Agency

Fig. II-1.6.5

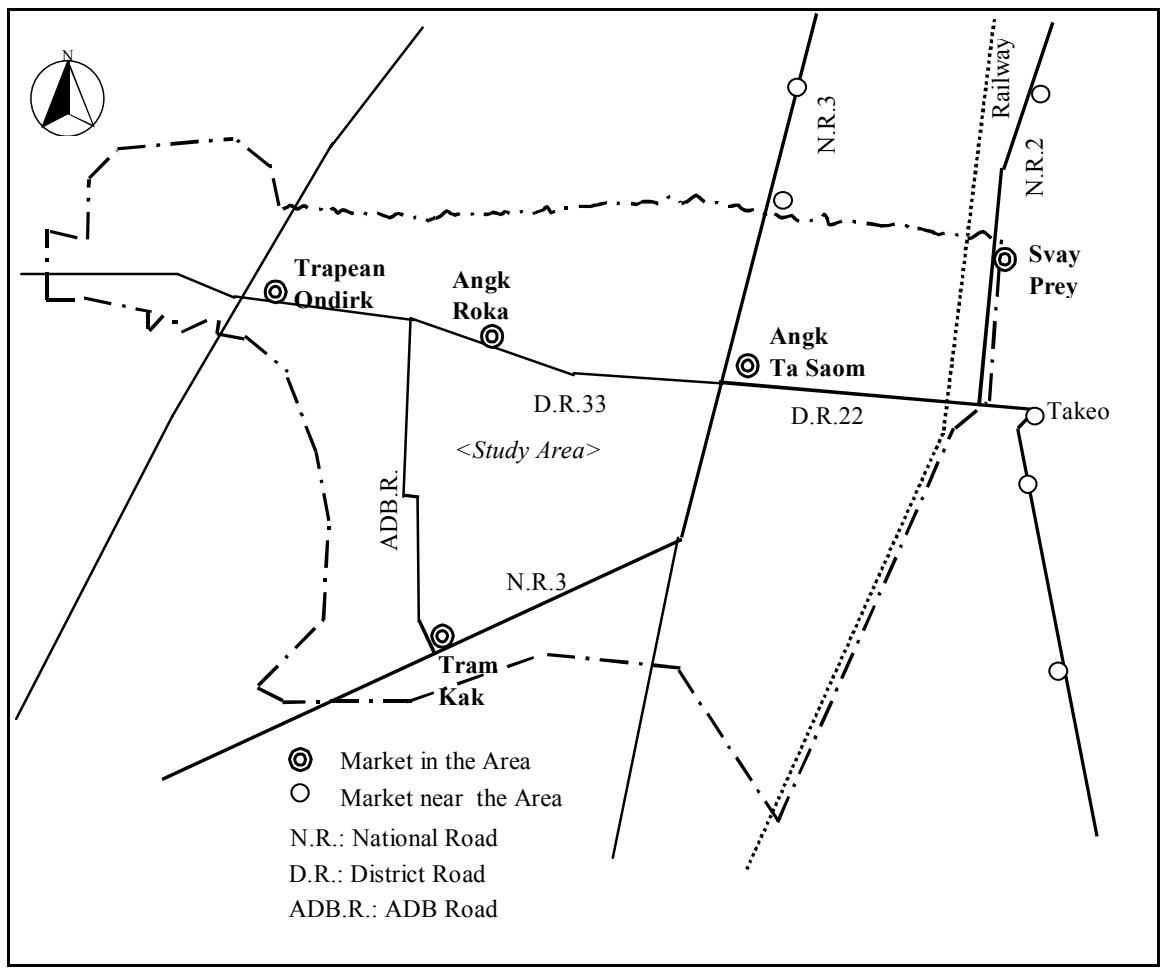
Present Condition of Canals and Roads in the Study Area (4/5)



The Study on The Rehabilitation and Reconstruction of Agricultural Production System in The Slakou River Basin, The Kingdom of Cambodia

Japan International Cooperation Agency

Fig. II-1.6.6 Present Condition of Canals and Roads in the Study Area (5/5)

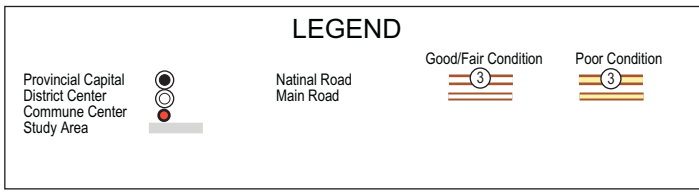


The Study on The Rehabilitation and Reconstruction of Agricultural Production System in The Slakou River Basin, The Kingdom of Cambodia

Japan International Cooperative Agency

Figure II-1.8.1

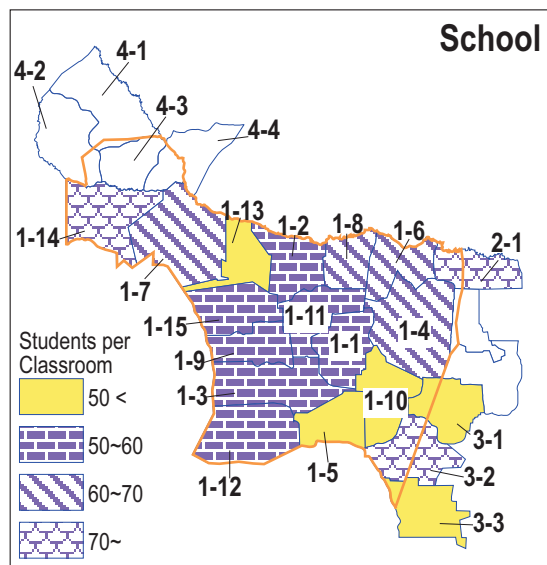
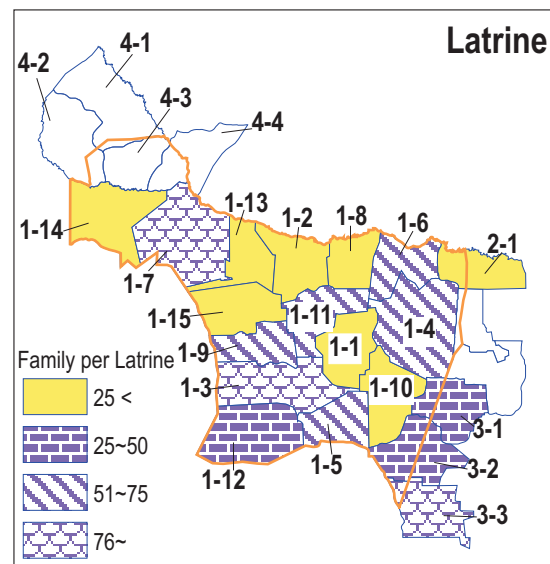
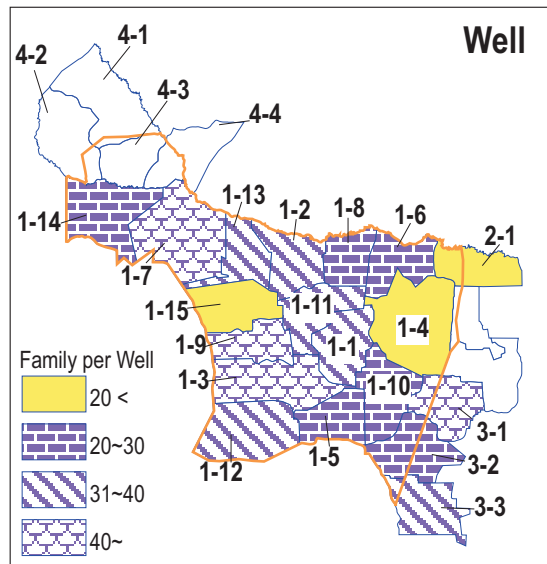
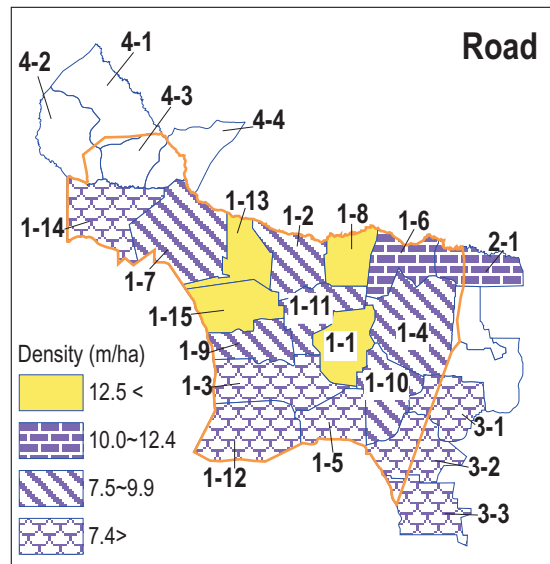
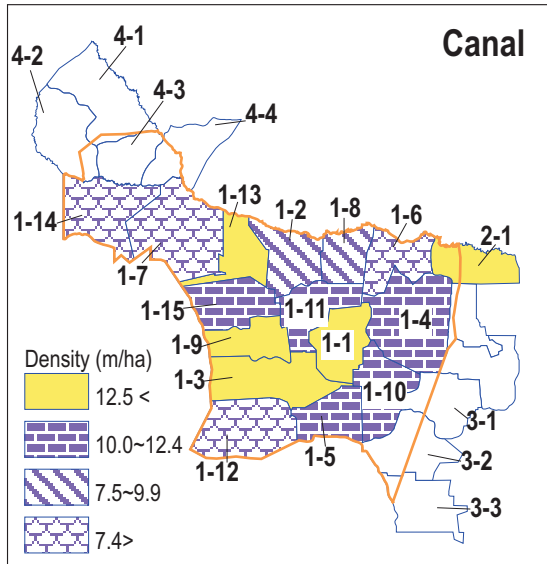
Location of Public Market



The Study on The Rehabilitation and Reconstruction of
Agricultural Production System
in The Slakou River Basin, The Kingdom of Cambodia

Japan International Cooperation Agency

Fig. II-1.9.1
Major Roads and Condition in the Study Area



List of Communes

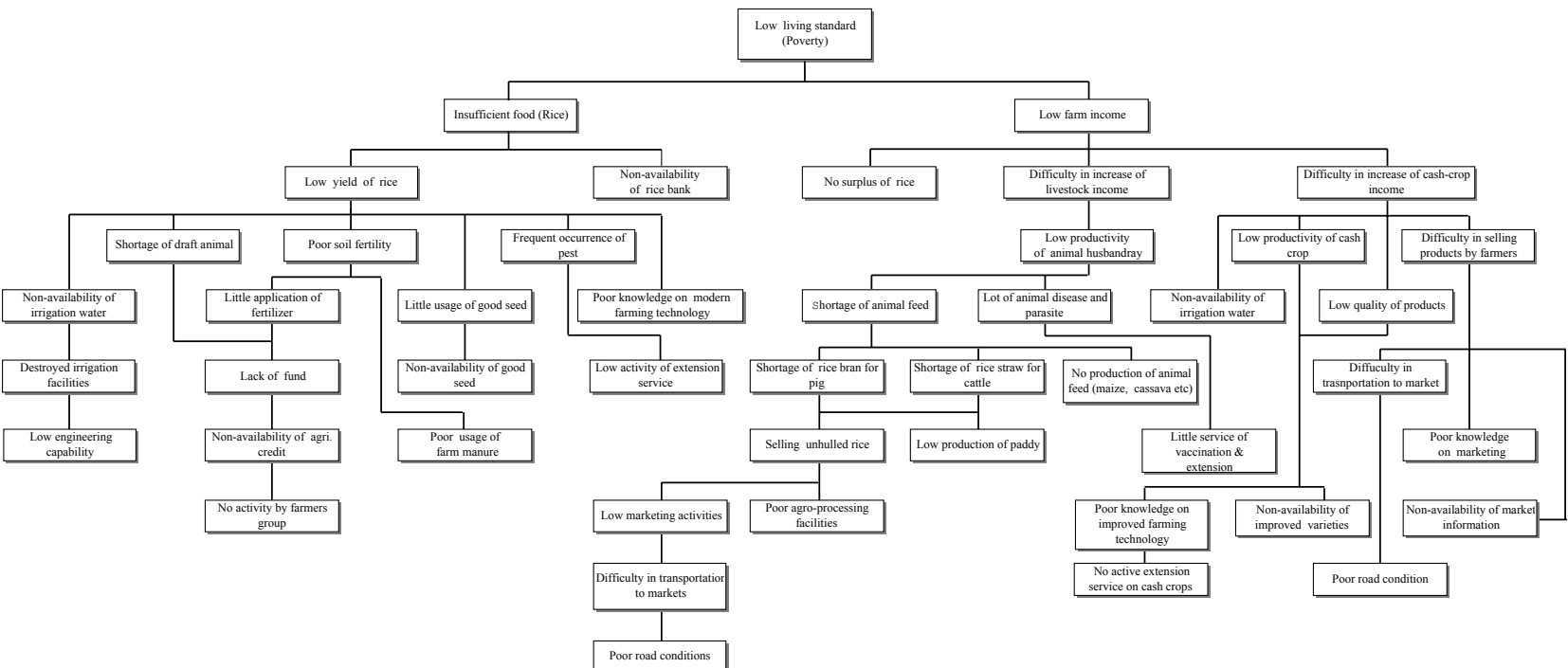
- Tram Kak District (Takeo)
 - 1-1 Angk Ta Saom
 - 1-2 Cheang Tong
 - 1-3 Kus
 - 1-4 Leay Bour
 - 1-5 Nhaeng Nhang
 - 1-6 Otdam Souriya
 - 1-7 O Saray
 - 1-8 Popel
 - 1-9 Samraong
 - 1-10 Srae Ronoung
 - 1-11 Ta Phem
 - 1-12 Tram Kak
 - 1-13 Trapeang Thum Khang Cheung
 - 1-14 Trapeang Kranhung
 - 1-15 Trapeang Thum Khang Tboung
- Samraong District (Takeo)
 - 2-1 Lumchang
- Treang District (Takeo)
 - 3-1 Reneam
 - 3-2 Angk Kaev
 - 3-3 Khavav
- Basedth District (Kampong Spueu)
 - 4-1 Kat Phluk
 - 4-2 Pheakdei
 - 4-3 Phong
 - 4-4 Basedth

The Study on The Rehabilitation and Reconstruction of Agricultural Production System in The Slakou River Basin, The Kingdom of Cambodia

Japan International Cooperation Agency

Figure II-1.9.2

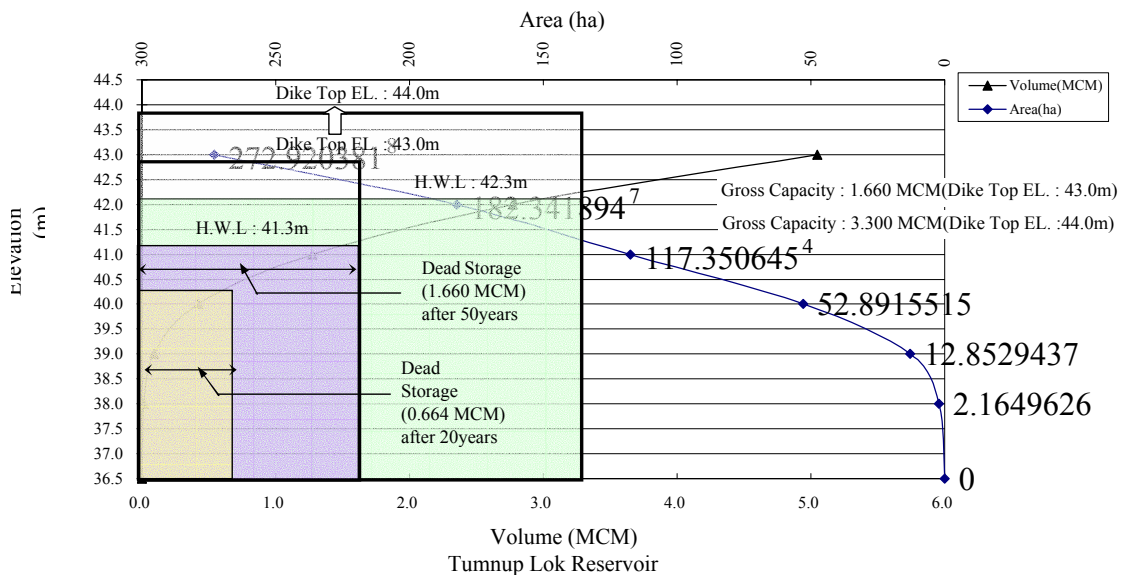
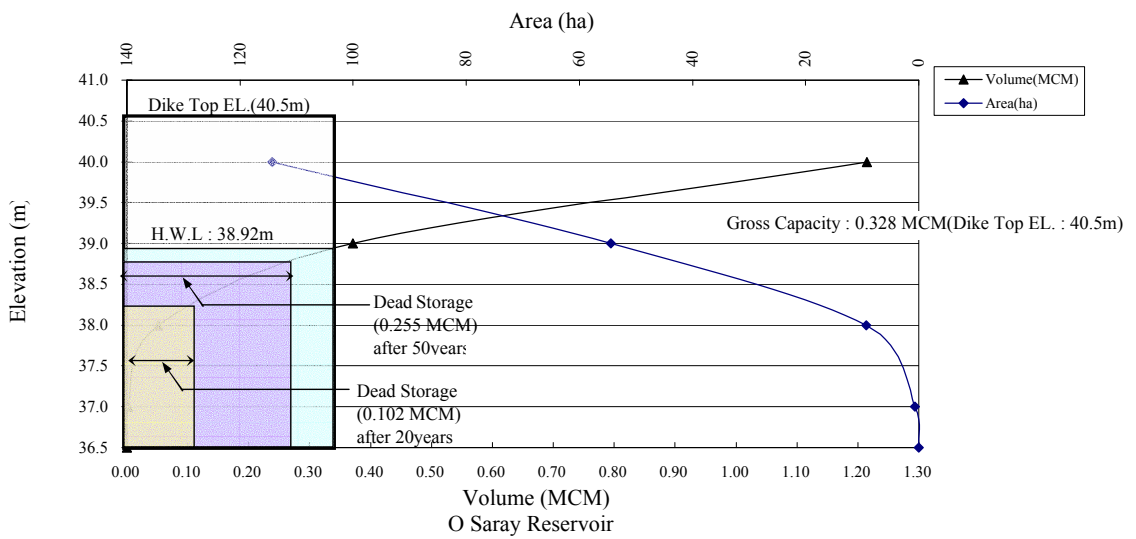
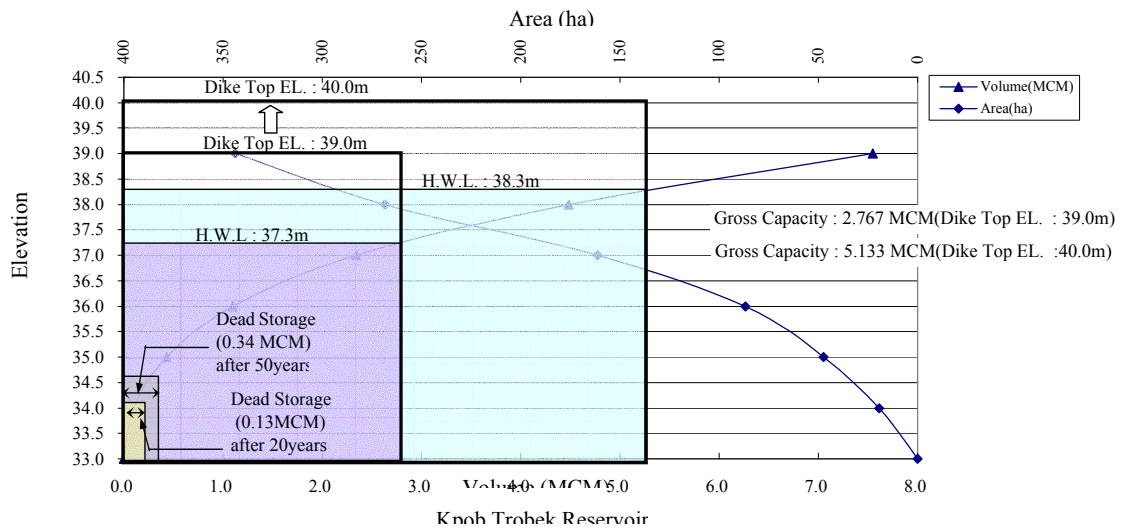
Distribution of Infrastructures in the Study Area



The Study on The Rehabilitation and Reconstruction of Agricultural Production System in The Slakou River Basin, The Kingdom of Cambodia

Japan International Cooperation Agency

Figure. II-2.2.1
 Problem Tree for the Present Low Living Standard in the Study Area



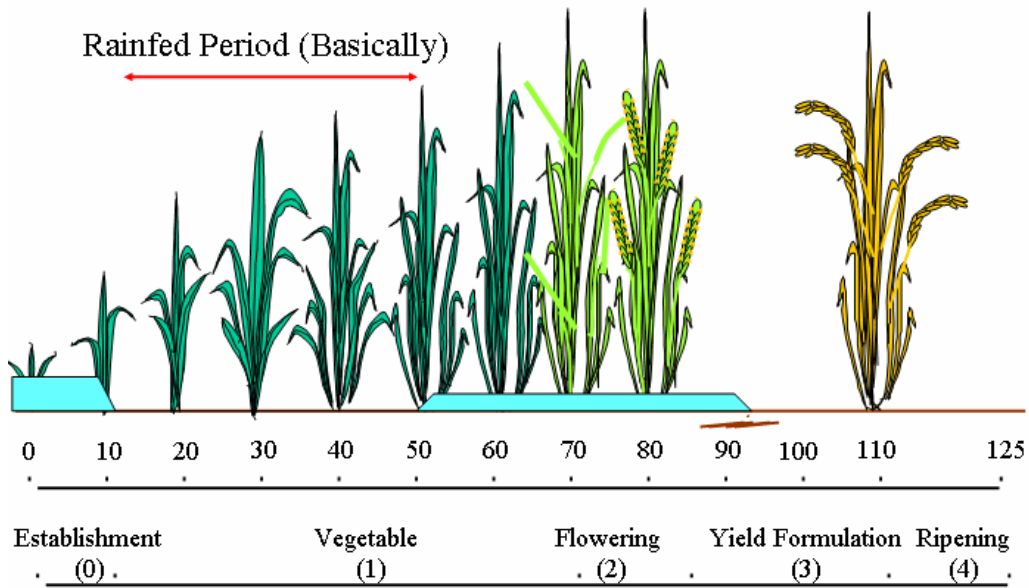
The Study on The Rehabilitation and Reconstruction of Agricultural Production System in The Slakou River Basin The Kingdom of Cambodia

Japan International Cooperation Agency

Figure II-3.2.1

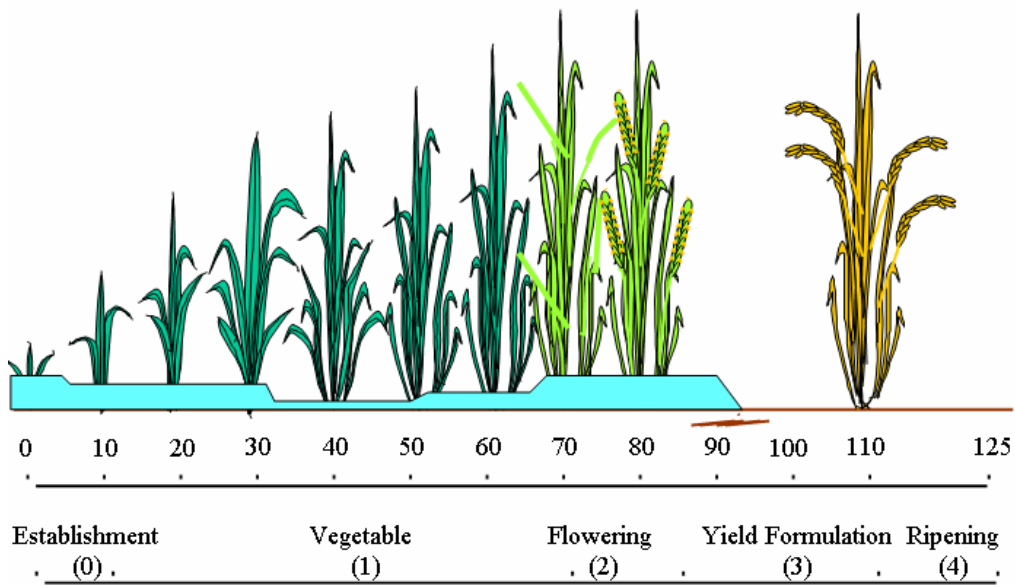
Storage Volume and Area Curves of Kpob Trobek, O Saray Tumnap Lok Reservoirs

Controlled Water Depth in Paddy Field Water Saving Irrigation



Water saving irrigation method applied for the Study Area

Controlled Water Depth in Paddy Field Continuous Submersion



Conventional ponding irrigation method

The Study on the Rehabilitation and Reconstruction
of Agricultural Production System
in the Slakou River Basin, The Kingdom of Cambodia

Japan International Cooperation Agency

Fig. II-3.2.2

Water Saving Irrigation Method

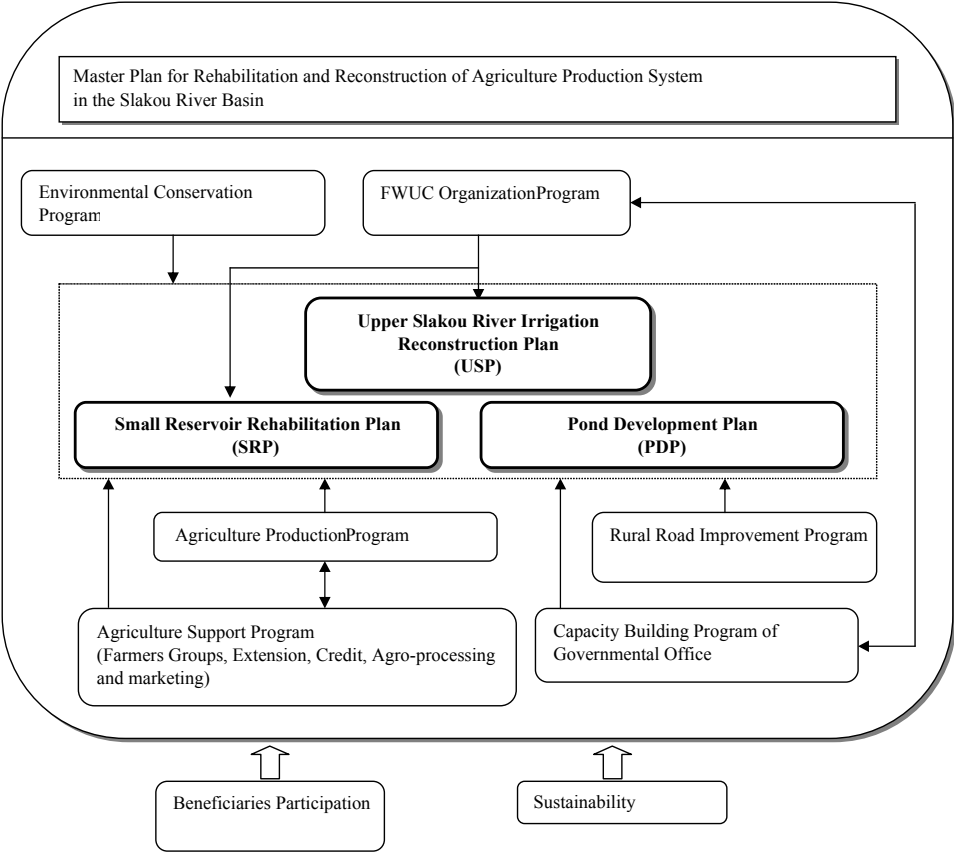
Goal: Improvement of low living standard in rural area of Cambodia where existing irrigation facilities are deteriorated, by application of the Plan as a model.

Targets

Increase in farm income and improvement of low living standard in the Study Area

Model for irrigation-based rehabilitation /reconstruction projects □

Contribution to stabilization of food supply

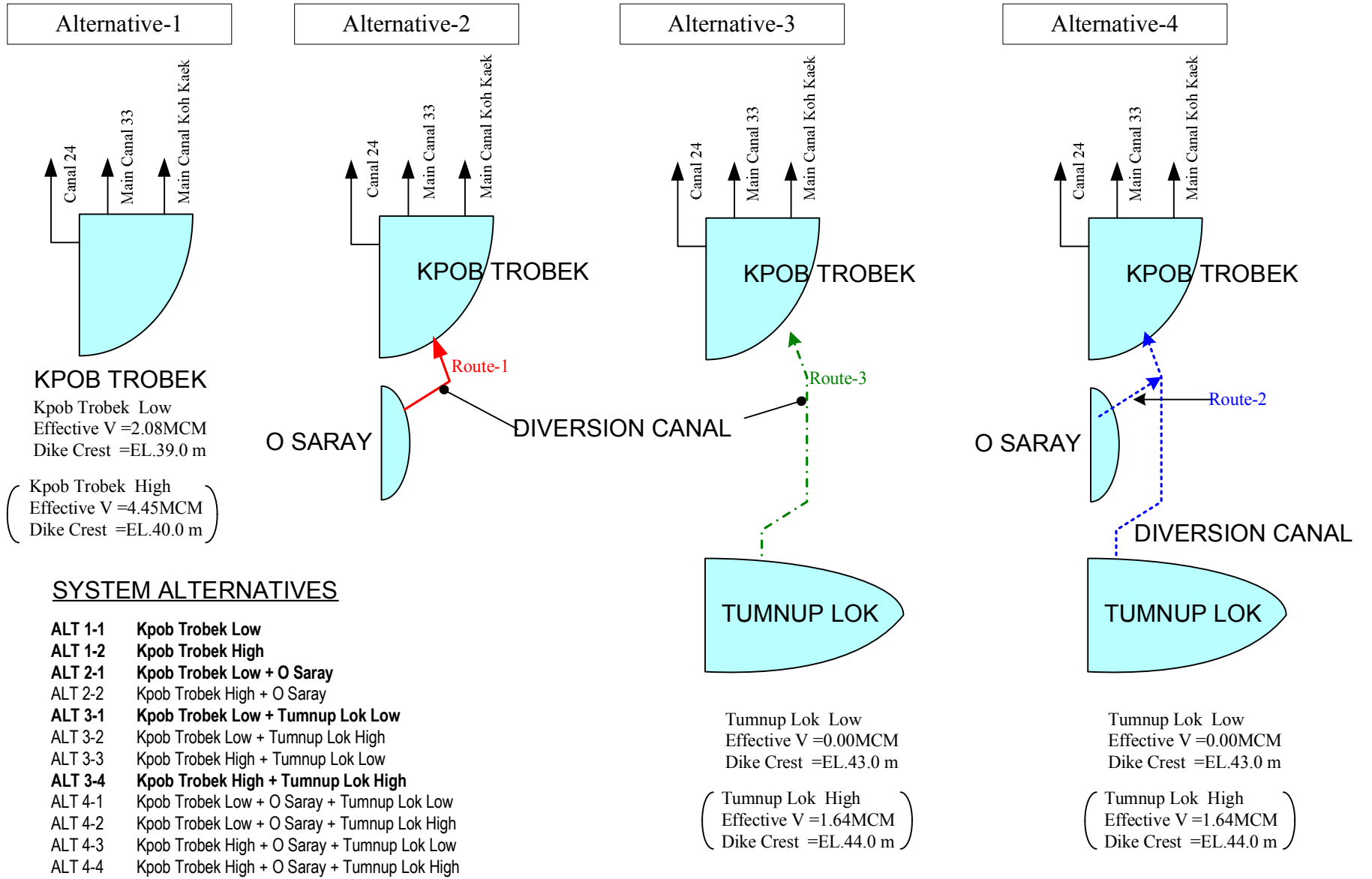


The Study on The Rehabilitation and Reconstruction of Agricultural Production System in The Slakou River Basin, The Kingdom of Cambodi

Figure II-4.1.1

General Development Concept

Japan International Cooperation Agency



Note: Bold faced alternatives were selected for detailed evaluation.(Sub-section II-4.2.1)