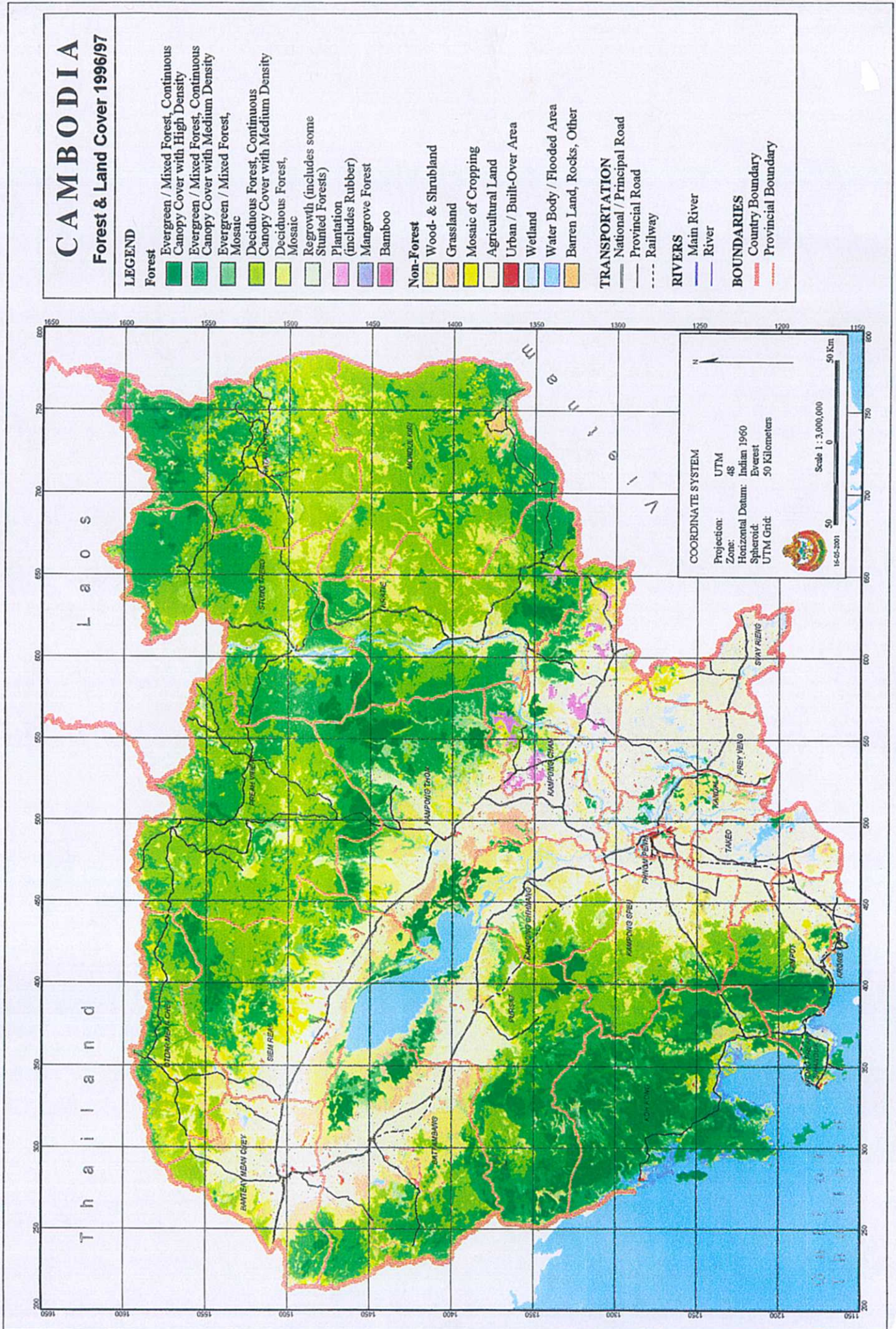


## 14. カンボディア植生図、森林面積



# CAMBODIA

Forest Land Allocation ( Forest Cover 1996/97, Concession Area 2000, Protected Area 1993 'Royal decree' )

## LEGEND

### Forest

- Evergreen / Mixed Forest, Continuous Canopy Cover with High Density
- Evergreen / Mixed Forest, Continuous Canopy Cover with Medium Density
- Evergreen / Mixed Forest, Mosaic
- Deciduous Forest, Continuous Canopy Cover with Medium Density
- Deciduous Forest, Mosaic
- Regrowth (includes some Stunted Forests)
- Plantation (includes Rubber)
- Mangrove Forest
- Bamboo

### Non-Forest

- Wood- & Shrubland
- Grassland
- Mosaic of Cropping
- Agricultural Land
- Urban / Built-Over Area
- Wetland
- Water Body / Flooded Area
- Barren Land, Rocks, Other

### TRANSPORTATION

- National / Principal Road
- Provincial Road
- Railway

### RIVERS

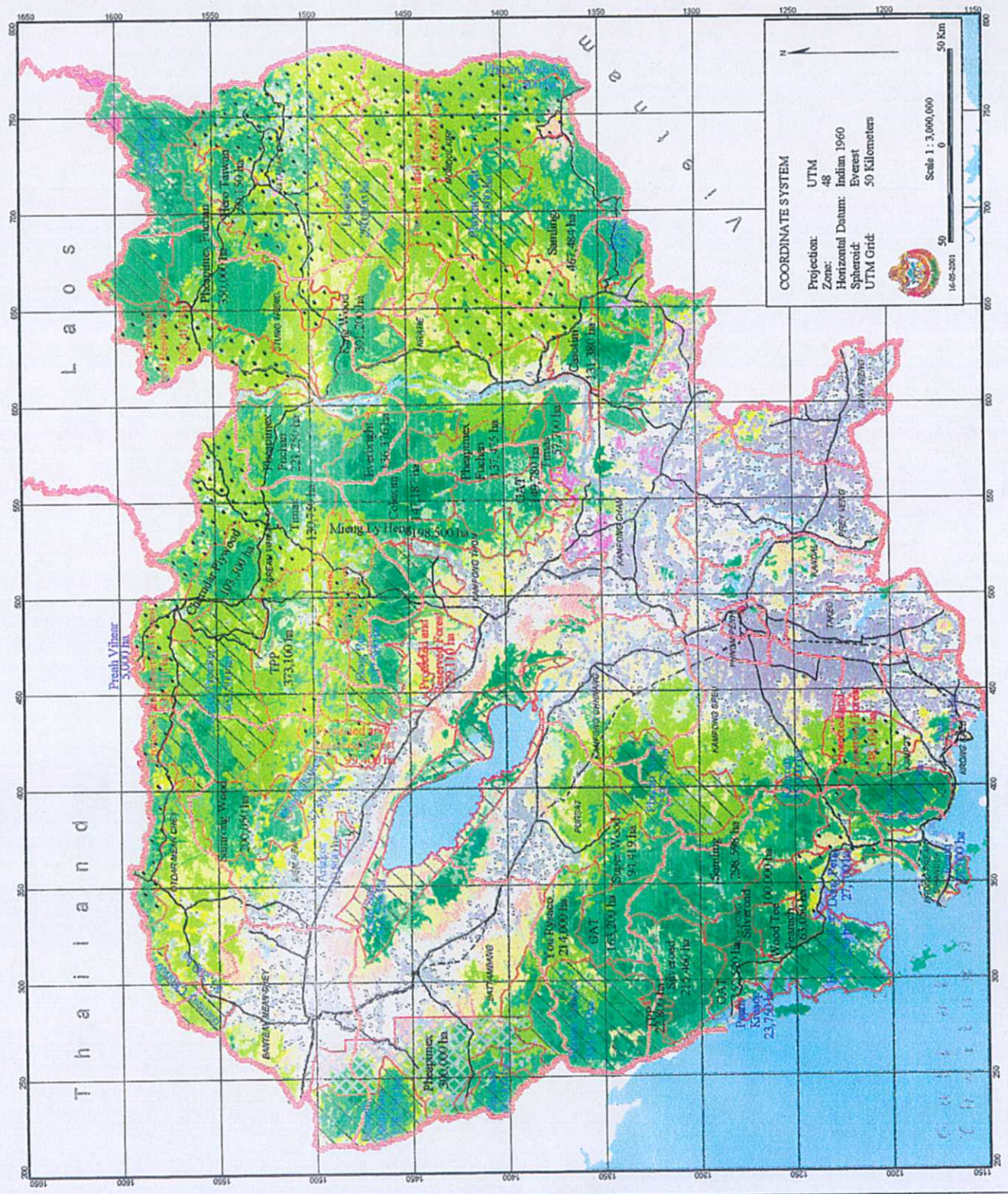
- Main River
- River

### BOUNDARIES

- Country Boundary
- Provincial Boundary
- Village

### CONCESSIONS / PROTECTED AREAS

- Concession
- Bamboo Concession
- Protected Areas
- Protected and Reserved Forests



AREA OF FOREST BY TYPE AND CHANGE, 1992/93 - 96/97

<b>CAMBODIA</b>						
<b>Wood</b>	<b>Area 92/93, (ha)</b>	<b>%</b>	<b>Area 96/97, (ha)</b>	<b>%</b>	<b>Change,ha</b>	<b>Change,%</b>
Evergreen Dense	654442	3.63	625177	3.44	-29265	-0.18
Evergreen Disturbed	3255533	18.03	3183395	17.54	-72138	-0.50
Evergreen Mosaic	129902	0.72	178147	0.98	48246	0.26
Mixed Dense	99124	0.55	95560	0.53	-3564	-0.02
Mixed Disturbed	1325353	7.34	1284446	7.08	-40907	-0.27
Mixed Mosaic	110066	0.61	125320	0.69	15254	0.08
Deciduous	4008000	22.20	3931219	21.66	-76781	-0.55
Deciduous Mosaic	342204	1.90	350178	1.93	7974	0.03
Forest Regrowth	435618	2.41	374197	2.06	-61421	-0.35
Inundated Forest Regrowth	21623	0.12	20819	0.11	-804	-0.01
Inundated Forest	229266	1.27	219906	1.21	-9360	-0.06
Mangrove Forest	77669	0.43	72835	0.40	-4834	-0.03
Forest Plantation	72307	0.40	82425	0.45	10119	0.05
Inundated Forest Mosaic	98587	0.55	94582	0.52	-4005	-0.03
<b>Sub Total</b>	<b>10859695</b>	<b>60.15</b>	<b>10638209</b>	<b>58.60</b>	<b>-221486</b>	<b>-1.55</b>
<b>Non-Wood</b>						
Wood-/ Shrubland Evergreen	559052	3.10	545101	3.00	-13951	-0.09
Grassland	476804	2.64	488643	2.69	11840	0.05
Bamboo	32224	0.18	33730	0.19	1506	0.01
Wood-/ Shrubland Dry	1267770	7.02	1165377	6.42	-102392	-0.60
Wood-/ Shrubland Inundated	377401	2.09	348971	1.92	-28430	-0.17
Mosaic of Cropping (<30%)	198879	1.10	285155	1.57	86276	0.47
Mosaic of Cropping (>30%)	104444	0.58	143796	0.79	39351	0.21
Agricultural Land	3692356	20.45	3901869	21.49	209513	1.04
Barren Land	15090	0.08	18136	0.10	3046	0.02
Rocks	2149	0.01	2149	0.01	0	0.00
Urban/ Built-Over Areas	26625	0.15	27615	0.15	990	0.00
Water	446163	2.47	469138	2.58	22974	0.11
Other	1756	0.01	1756	0.01	0	0.00
Wetland	91079	0.50	83340	0.46	-7739	-0.05
Cloud	1497	0.01	0	0.00	-1497	-0.01
<b>Total</b>	<b>7293290</b>	<b>39.85</b>	<b>7514776</b>	<b>41.40</b>	<b>324485</b>	<b>1.55</b>
<b>Grand Total</b>	<b>18152985</b>	<b>100.00</b>	<b>18152985</b>	<b>100.00</b>	<b>102998</b>	<b>0.00</b>

**The Forest Concession Companies with valid Agreements (in 2000)**

N <sup>o</sup>	Name of Company	Location (Provinces)	Area, ha	
1	GAT International	Kompong Thom & Kratie	149,780	
		Koh Kong & Pursat	215,720	
2	Youry Saco	Pursat & Batabang	214,000	
3	Colexim Enterprise	Kompong Thom	147,187	
4	Mieng Ly Heng Investment	Kompong Thom, Preah Vihear & Kompong Cham	198,500	
5	Pheapimex Fuchan Cambodia	Kratie & Kompong Thom	137,475	
		Stung Treng	221,250	
		Stung Treng & Rattanakiri	350,000	
6	Cambodia Cherndar Plywood	Preah Vihear	103,300	
7	Everbright CGI Wood Co., Ltd.	Stung Treng & Stung Treng	136,376	
8	Hero Taiwan	Rattanakiri	60,150	
9	Samrong Wood Industry	Siemreap	200,050	
10	Silveroad Wood Product Ltd.	Koh Kong & Pursat	215,460	
		Koh Kong	100,000	
11	King Wood Industry Pte., Ltd.	Kratie, Stung Treng & Mondulkiri	301,200	
12	Woot Tee Peanich	Koh Kong	63,050	
13	SL International Ltd.	Kratie, Kompong Cham & Mondulkiri	467,484	
		Kompong Speu & Koh Kong	298,598	
14	Casotim Enterprise	Kratie	131,380	
15	Super Wood IPEP, Ltd.	Pursat & Kompong Speu	94,419	
16	Timas Resources Ltd.	Kompong Cham, Kratie & Preah Vihear	161,450	
17	TPP Cambodia Timber Product Pte., Ltd.	Siemreap, Preah Vihear & Pursat	395,900	
<b>Total</b>		<b>24</b>	<b>4,362,729</b>	

Source: FMO, DFW, 2000.

## Forest Cover Area Classified by FMO/ DFW

<b>Total Land Area</b>	<b>18,152,985 Ha</b>
<b>Total Forest Area :</b>	
-Evergreen Dense	625,177 Ha
-Evergreen Disturbed	3,183,395 Ha
-Evergreen Mosaic	178,147 Ha
-Mixed Dense	95,560 Ha
-Mixed Disturbed	1,284,446 Ha
-Mixed Mosaic	125,320 Ha
-Deciduous	3,931,219 Ha
-Deciduous Mosaic	350,178 Ha
-Bamboo	33,730 Ha
-Forest Regrowth	374,197 Ha
-Inundated Forest Regrowth	20,819 Ha
-Inundated Forest	219,906 Ha
-Mangrove Forest	72,835 Ha
-Forest Plantation	82,425 Ha
-Inundated Forest Mosaic	94,582 Ha
<b>Total</b>	<b>10,671,939 Ha</b>

<b>Production Forest Area :</b>	
-Evergreen Dense	625,177 Ha
-Evergreen Disturbed	3,183,395 Ha
-Evergreen Mosaic	178,147 Ha
-Mixed Dense	95,560 Ha
-Mixed Disturbed	1,284,446 Ha
-Mixed Mosaic	125,320 Ha
<b>Total</b>	<b>5,492,045 Ha</b>

<b>Conservation Forest (Protected) Area :</b>	
-National Parks	871,250 Ha
-Wildlife Sanctuaries	2,030,000 Ha
-Protected Landscapes	97,000 Ha
-Multiple Use Management Areas	403,950 Ha
<b>Total</b>	<b>3,327,200 Ha</b>

**Plantation Area (Including Rubber Plantation) 82,425 Ha**

**Source:**

- Royal Decree
- Department of Forestry & Wildlife.
- Lansat TM1996/97