

# *Tables*

**Table 3.3.1 Recommended Task Target Matrix for Effective Exercise and Education (1/2)**

Number	Task	Item	Description	Target Group			
				Civil servants	Citizens	Schools	Masons
1	Risk Assessment	Damage Estimation at local level	Dissemination of results of the Estimated Damages in the Valley. <b>Dissemination Tool:</b> DIG				
		Diagnosis of Eq. Resilience at community level	Preparation of precise diagnosis of the potential hazard and resources in the local areas smaller than ward. <b>Dissemination Tool:</b> Community Watching DIG, PRA				
		Preparing and disseminating Hazard Maps	Compiling information by above mentioned diagnosis in the smaller area than ward and disseminating maps to local residents. <b>Recommended Scale:</b> at least 1/10,000				
2	Public Awareness Raising	Public Information Dissemination	Utilising mass media, TV radio and newspapers for disseminating disaster mitigation information, introducing activities of Public Authorities. Producing Pamphlets for disseminating Earthquake knowledge and drawing interest of the citizens, promoting mitigation countermeasures among citizens as a final product of community based participatory meetings.				
		Draw up School Curriculum	Draw up School Curriculum in proportion to different levels of class and authorise it for the national standard. As an initial step, a model school to be chosen to delineate curriculum.				
		Holding Exhibition for Earthquake Disaster Mitigation	Reinforcing Earthquake Safety Day on Jan. 15 in commemorating 1934 earthquake. Holding Experience-Oriented-Exhibitions on this day to make the participants think about the earthquake mitigation more close to themselves.  <b>Examples of Exhibitions</b> Shaking table experiments for examining building vulnerability, Tips of Earthquake Resistant Buildings Experiencing mock earthquake, Demonstration of preparedness at home, Exhibition and selling of Earthquake Disaster Mitigation Kit, Past mitigation activities municipalities have done.				
		Holding Seminars, Workshops	Holding seminars, workshops for raising awareness of the general public. See Figure 3.3.4 for detailed model for the citizens' awareness programme.				

**Table 3.3.2 Recommended Task Target Matrix for Effective Exercise and Education (2/2)**

Number	Task	Item	Description	Target Group			
				Civil servants	Citizens	Schools	Masons
3	Human Resource Development	Administrator Training	Training administrators to gain knowledge for daily services, to increase resilience among the citizens.				
		Training of local leaders	Training local leaders with specific and practical knowledge for earthquake mitigation in general to lead the community based mitigation activities, rescue and relief in the emergency situation.				
		Conducting Earthquake Drill	Developing the sense of cooperation, and coordination, raising awareness. Practising evacuation, first aid, role playing for residents, school, administrators.				
		Mason Training	Train local masons for earthquake safer building technology. Those who have acquired training courses shall receive certifications which ensure higher payment.				
4	Capacity Building for organisations	Emergency Response	Upgrading organisational skills and capacity for emergency response including search and rescue immediate relief etc. Focus on capacity building among the local governments and community based organisations.				
		Strengthening Coordination	Special emphasis will be provided to strengthen the coordination among government organisations and agencies at different levels. Coordination among government and non-government organisations and residents will also be enhanced.				
5	Networking	Formulation of Disaster Management Committee	Disaster management committee will be formed at community level to promote understanding and responsibilities before, during and after disasters.				
		Inter-linkages of different voluntary organisations	Information database will be made on different voluntary organisations (including individuals) which can be effective during emergency situations. Emphasis will be given to establish linkage and coordination among these organisations.				
6	Establishing infrastructure for effective disaster management	Operation of Information and Communication Centre	Operation of Information and communication Centre can be set up at the Municipality level to enhance resources and information. This centre will act as training cum public awareness and information dissemination centre. During emergency this centre can also act as an emergency coordination cum relief centre.				
		Operation of Mason Training Centre	To enhance the capacity of local masons for earthquake safer building technology, this centre can be a training and awareness raising centre. This centre will establish a link between the local government and non-government organisations for effective community empowerment.				

**Table 5.10.1 Debris Removal Plan in Strategic Road Network: An Example**

Road	Sector	Section Name	Sec No.	Width of Open Space (m)	First Iteration							Second Iteration							Third Iteration							Block Length Tot(m)		
					Tallest from Most Domin BuildType	Ht Build	Block Yes=1 No=0	Critical RoadLen fromMess	Building Density	Critical RoadLen	Ratio of Building Damage	Length Block First	Next from MostDom BuildType	Ht Build	Block Yes=1 No=0	Critical Road Length	Building Density	Critical RoadLen %Cover	Length Block Second	Next from MostDom BuildType	Ht Build	Block Yes=1 No=0	Critical Road Length	Building Density	Critical RoadLen %Cover		Length Block Third	
Trivuban		Thankot-Kalanki	1	15	BC	9	0	0	0	0	0	0	0	0	0	0	0	0	0	0	0	0	0	0	0	0	0	
		Kalanki-Soalteemod	2	8	RCL	12	1	1500	0.75	1125	0.25	280	0	0	0	0	0	0	0	0	0	0	0	0	0	0	0	280
		Soalteemod-Tripureshore	3	17	RCL	12	0	0	0	0	0	0	0	0	0	0	0	0	0	0	0	0	0	0	0	0	0	0
Arniko		Maitighar-Tinkune	4	30	RCL	12	0	0	0	0	0	0	0	0	0	0	0	0	0	0	0	0	0	0	0	0	0	
		Tinkune-Nagarkot Div.	5	20	RCL	12	0	0	0	0	0	0	0	0	0	0	0	0	0	0	0	0	0	0	0	0	0	
		Nagarkot Div.-Sanga	6	30	RCL	12	0	0	0	0	0	0	0	0	0	0	0	0	0	0	0	0	0	0	0	0	0	
Ring Road		Gaushala-Chabahil	7	17	BC	9	0	0	0	0	0	0	0	0	0	0	0	0	0	0	0	0	0	0	0	0	0	
		All Other	8	50	RCH	15	0	0	0	0	0	0	0	0	0	0	0	0	0	0	0	0	0	0	0	0	0	
FRMaj		Tripureshore-Lainchaur	9	17	RCL	12	0	0	0	0	0	0	0	0	0	0	0	0	0	0	0	0	0	0	0	0	0	
		Lainchaur-Sohrakhutte	10	8	RCL	12	1	600	0.75	450	0.25	110	0	0	0	0	0	0	0	0	0	0	0	0	0	0	110	
		Sohrakhutte-Balaju Ring Road	11	10	RCL	12	1	500	0.75	375	0.25	90	AD	6	0	0	0	0	0	0	0	0	0	0	0	0	90	
		Balaju Ring Road-Panchmane	12	7	RCL	12	1	1000	0.5	500	0.15	80	BC	9	1	1200	0.25	300	50	BM	7	1	500	0.1	50	10	140	
FRMin	Maharajgunj-Budhar	Lainchaur-Chakrapath	13	10	RCL	12	1	2000	0.75	1500	0.25	380	BC	9	1	300	0.5	150	40	BM	7	1	600	0.25	150	40	460	
		Chakrapath-Budhanilkantha	14	10	BC	9	1	4000	0.25	1000	0.25	250	BM	7	1	400	0.1	40	10	0	0	0	0	0	0	260		
	Chabahil-Sankhu	Chabahil-Baudha	15	15	RCL	12	1	1500	0.5	750	0.25	190	BM	7	0	0	0	0	0	0	0	0	0	0	0	0	190	
		Baudha-Sankhu	16	8	BC	9	1	3000	0.25	750	0.35	260	BM	7	1	1000	0.1	100	40	AD	6	1	4000	0.1	400	140	440	
	Baudha-Sundarijal	Baudha-Sundarijal	17	8	BC	9	1	3500	0.25	875	0.35	310	BM	7	1	1500	0.1	150	50	AD	6	1	1200	0.1	120	40	400	
		Sat Dobato-Chapagaun	18	8	RCL	12	1	1000	0.25	250	0.35	90	BC	9	1	3500	0.25	875	310	BM	7	1	2700	0.25	675	240	640	
	Kuleshore-Dakshinkali	Sat Dobato-Chapagaun	19	10	RCL	12	1	1500	0.25	375	0.15	60	BC	9	1	300	0.1	30	0	BM	7	1	2500	0.1	250	40	100	
		Kuleshore Dakshinkali	20	20	RCL	12	0	0	0	0	0	0	0	0	0	0	0	0	0	0	0	0	0	0	0	0	0	
DRBit		Kirtipur Road	21	7	RCL	12	1	3500	0.5	1750	0.15	260	BC	9	1	2000	0.25	500	80	AD	6	1	1000	0.1	100	20	360	
DRGravel		Old Thimi Road	21	7	RCL	12	1	3500	0.5	1750	0.15	260	BC	9	1	2000	0.25	500	80	AD	6	1	1000	0.1	100	20	360	
		Balaju-Alley	22	5	BC	9	1	2500	0.25	625	0.35	220	BM	7	1	1500	0.1	150	50	AD	6	1	2500	0.1	250	90	360	
URMaj		Kalimati-Kuleshore	23	11	RCL	12	1	800	0.75	600	0.15	90	BC	9	1	600	0.75	450	70	0	0	0	0	0	0	0	160	
		Tripureshore-Jawalakhel	24	16	RCL	12	0	0	0	0	0	0	0	0	0	0	0	0	0	0	0	0	0	0	0	0	0	
		Jawalakhel-Ekantakuna	25	9	RCL	12	1	300	0.5	150	0.15	20	BM	7	1	400	0.5	200	30	0	0	0	0	0	0	0	50	
		Jawalakhel-Lagankhel	26	10	RCL	12	1	500	0.75	375	0.15	60	BC	7	1	300	0.5	150	20	0	0	0	0	0	0	0	80	
		Lagankhel-Ring Road	27	9	RCL	12	1	500	0.75	375	0.15	60	BC	9	1	500	0.5	250	40	BM	7	1	300	0.25	75	10	110	
		Thapathali-Maitighar	28	16	BC	9	0	0	0	0	0	0	0	0	0	0	0	0	0	0	0	0	0	0	0	0	0	0
		Maitighar-Singha Durbar	29	20	RCL	12	0	0	0	0	0	0	0	0	0	0	0	0	0	0	0	0	0	0	0	0	0	0
		Singha Durbar-Palace	30	14	RCL	12	1	300	0.75	225	0.25	60	BC	9	0	0	0	0	0	0	0	0	0	0	0	0	0	60
		Singha Durbar Ring	31	14	RCL	12	1	1000	0.1	100	0.15	20	BC	9	0	0	0	0	0	0	0	0	0	0	0	0	0	20
		Maitighar-Bhadrakali	32	11	BC	9	1	100	0.2	20	0.15	0	0	0	0	0	0	0	0	0	0	0	0	0	0	0	0	0
		Bhadrakali-Sahidgate	33	14	None	0	0	0	0	0	0	0	0	0	0	0	0	0	0	0	0	0	0	0	0	0	0	0
		Singha Durbar-Bhadrakali	34	30	None	0	0	0	0	0	0	0	0	0	0	0	0	0	0	0	0	0	0	0	0	0	0	0
		Pradarshani Marg	35	16	RCL	12	0	0	0	0.5	0	0	0	0	0	0	0	0	0	0	0	0	0	0	0	0	0	0
		New Road	36	15	RCH	15	1	400	0.9	360	0.25	90	0	0	0	0	0	0	0	0	0	0	0	0	0	0	0	90
		Bhadrakali-Ratnapark	37	20	RCL	12	0	0	0	0	0	0	0	0	0	0	0	0	0	0	0	0	0	0	0	0	0	0
		Ratnapark-Palace	38	20	RCL	12	0	0	0	0	0	0	0	0	0	0	0	0	0	0	0	0	0	0	0	0	0	0
		Ratnapark-Baneshore-Ring Road	39	10	RCL	12	1	1700	0.75	1275	0.15	190	BC	9	1	500	0.5	250	40	BM	7	1	1500	0.5	750	110	340	
		Ratnapark Road	40	20	RCL	12	0	0	0	0	0	0	0	0	0	0	0	0	0	0	0	0	0	0	0	0	0	0
		Keshar Mahal-Palace	41	14	None	0	0	0	0	0	0	0	0	0	0	0	0	0	0	0	0	0	0	0	0	0	0	0
		Kamal Pokhari-Gaushala	42	7	BC	9	1	1000	0.75	750	0.15	110	BM	7	1	700	0.5	350	50	AD	6	1	500	0.5	250	40	200	

Note: Section No.32 blockage < 10m and not considered: Clearance Priority based on their presumed level of importance

**Total**

**4940**

**Table 7.2.1 Programme Cost Estimate (1/2)**

No.	Items	Cost			Responsible Organization					
		MJPY	Breakdown		National Government		Local Government	Private Sectors		
			MM	H/W etc.						
<b>Earthquake Disaster Estimation</b>										
ED-1	Seismological Measurements									
ED-1.1	Seismological observation	100	2x5	instruments, install	DMG					
ED-1.2	GPS observation	500	2x20	instruments, install	Survey Dept.					
ED-2	Basic data									
ED-2.1	Regulation of Map data	100	2x5	investigation, data input	Survey Dept.					
ED-3	Geological Data									
ED-3.1	Basement structure measurement of Kathmandu valley	500	3x10	investigation	DMG				Nepal Geological Society	
ED-3.2	Geological database	500	3x10	data input, software	DMG				Nepal Geological Society	
ED-4	Infrastructure database									
ED-4.1	Building Inventory/Census	1,000	2x20	investigation, database	MPPW				Nepal Engg. Assoc.	
ED-4.2	Life Line GIS database									
ED-4.3	Bridge Ledger				MPPW	NEA	NTC			
ED-5	Data clearing house	100	2x5	equipments, data input	MOHA	MOCcm				
ED-6	Improvement of Damage estimation									
ED-6.1	Historical data gathering and analysis	50	2x5	investigation	DMG					
ED-6.2	Strong motion observation network	200	2x5	equipments, install	DMG					
ED-7	Education and Research									
ED-7.1	Earthquake engineering laboratory	100	2x10	training, seminar	MOSE	MPPW	Tribhuvan Univ.		Nepal Engg. Assoc.	
ED-7.2	Training earthquake engineers	100	2x10	training, seminar	MOSE	MPPW	Tribhuvan Univ.		Nepal Engg. Assoc.	

No.	Items	Cost			Responsible Organization					
		MJPY	Breakdown		National Government		Local Government	Private Sectors		
			MM	H/W etc.						
<b>Sustainable Mechanism for Development of Disaster Management</b>										
SM-1	Establishment of Legal Foundation	80	5x5		PM Office	MOHA				
SM-2	Establishment of Disaster Management Council									
SM-2.1	National Disaster Management Council	50	3x5		PM Office	NFC	MOHA	MOLD		
SM-2.2	Kathmandu Valley Disaster Management Council	40	3x4		MPPW	MOHA	MOLD		Municipalities	
SM-2.3	Municipality/Ward Disaster Management Council	50	3x5		MOLD				Municipalities	
SM-3	Cooperation between Government and Private sector	35	3x3		MOHA					
SM-4	Preparation of Disaster Management Plan									
SM-4.1	National Plan	80	5x5		NFC	MOHA	MOLD			
SM-4.2	Central government Plans	80	5x5		AIM Industries					
SM-4.3	Kathmandu Valley Plan	50	3x5		MPPW	MOHA	MOLD		Municipalities	
SM-4.4	Municipality Plans	72	3x6	training	MOLD				Municipalities	
SM-4.5	District Plans	50	3x5		MOHA				VDC	
SM-4.6	Private Plans	30	3x3							Hospital, School, Company
SM-5	Emphasis of Earthquake Management in National 5 Year Plan	40	2x5		NFC	AIM Industries				
SM-6	Exercises and Education									
SM-6.1	Citizens	65	2x5	training	MOLD				Municipalities	
SM-6.2	School Children	50	3x5	training	MOSE				Municipalities	
SM-6.3	Civil Servants	75	3x5	seminar, training	MOLD				Municipalities	
SM-6.4	Masons	100	3x8	building training, facilities	MPPW				Municipalities	

No.	Items	Cost			Responsible Organization					
		MJPY	Breakdown		National Government		Local Government	Private Sectors		
			MM	H/W etc.						
<b>Maintain Governance</b>										
MG-1	Establishment of Real Time Earthquake Information System									
MG-1.1	Earthquake Information System	90	2x5	communication equipment	DMG	MOHA			Municipalities	
MG-1.2	Seismological Information System	56	2x5	software	DMG	MOHA			Municipalities	
MG-1.3	Earthquake Information Reporting System	65	2x5	communication equipment	DMG	MOHA			Municipalities	
MG-2	Assessment of Damage Information System									
MG-2.1	Establishment of Lines of Communication	20	2x3		AIM Industries				Municipalities	
MG-2.2	Improvement of Daily Business Style	50	3x5		AIM Industries				Municipalities	
MG-2.3	Preparation of Taking Aerial Photos	10	1x3		Survey Department					
MG-3	Empowerment of Media									
MG-3.1	Seminars and Training	20	2x3		MOCcm.	Nepal TV	Radio Nepal			Media FM Newspapers
MG-3.2	Amendment of National Broadcasting Act	20	2x3		MOCcm.					
MG-3.3	Publicizing	20	2x3		MOHA	MOCcm.				Media FM Newspapers
MG-4	Establishment of Emergency Communications									
MG-4.1	Identifying the Defects of Radio Wave Propagation	24	2x3		MOCcm.	NTC				
MG-4.2	Digital Mobile Multi Channel Access System	310	2x10	equipments, construction	AIM Industries				Municipalities	
MG-4.3	Simultaneous Reporting System				MOHA					
MG-4.4	Portable Hardset	120	2x5	equipments, construction	AIM Industries				Municipalities	
MG-4.5	Initiate Amateur Radio Network				MOCcm.	NTC				Amateur Radio Community
MG-5	Preparation for Emergency Response									
MG-5.1	Control System	20	2x3		PM Office					
MG-5.2	Central Government EOC	1,500	3x8	building, facilities, training	PM Office	AIM Industries				
MG-5.3	Municipality/Ward EOC	1,000	3x10	building, facilities, training	MOLD				Municipalities	
MG-5.4	Plans/Manuals	100	3x5	training, seminar	MOHA	MOLD	AIM Industries		Municipalities	
MG-5.5	Facility for EOC				AIM Industries				Municipalities	
MG-6	Discipline Public Sector									
MG-6.1	Discipline Public Sector	50	3x5		AIM Industries				Municipalities	
MG-6.2	Line of Succession	50	3x5		AIM Industries				Municipalities	
MG-6.3	Preservation of Vital Records	50	3x5		AIM Industries				Municipalities	
MG-7	Preparation for Recovery									
MG-7.1	Capacity Building	50	3x5		AIM Industries				Municipalities	
MG-7.2	Review/Evaluation of Existing Priorities and Projects	100	5x5		MPPW					
MG-7.3	Preparedness	100	5x5		AIM Industries				Municipalities	

Table 7.2.2 Programme Cost Estimate (2/2)

No.	Items	Cost			Responsible Organization					
		(MJPY)	MM	Breakdown H/W etc.	National Government			Local Government	Private Sectors	
<b>Protect Life and Property of the People</b>										
PL-1	Search and Rescue									
PL-1.1	Plan for improvement of research and rescue	100	3x6	seminar, training	MOHA	MOHealth		Municipalities	Red Cross	WHO
PL-1.2	Acceptance of International Support	40	2x4		MOHA	MOHealth				
PL-1.3	Improvement of Disaster Medicine	500	3x6	equipments, facilities, training	MOHealth				Red Cross	WHO Hospitals
PL-1.4	Food and water supply	100	3x6	equipments, facilities, training	MOHealth					
PL-2	Shelter and Evacuation									
PL-2.1	Plan for shelter, evacuation and seminar	100	3x6	training, estate	KVTDC			Municipalities		
PL-3	Medical Problem									
PL-3.1	Public Health Care	200	3x5	equipments, seminar, training	MOH				Hospital	Red Cross Assoc.
PL-3.2	Remains	20	2x3		MOH			Municipalities		
PL-4	Other Functions									
PL-4.1	Security	20	2x3		MOHA	RNA				
PL-4.2	Firefighting	300	3x6	facilities	MOHA					
PL-4.3	Management of volunteers	20	2x3		MOHA			Municipalities		
PL-4.4	Safety Inspections	200	3x6	training, seminar	MPPW			Municipalities	Nepal Engg. Assoc.	
PL-4.5	Debris removal	50	3x5		MPPW			Municipalities	Nepal Engg. Assoc.	
PL-5	Transportation System (Roads and Bridges)									
PL-5.1	Database	200	2x8	software, data input	MPPW					
PL-5.2	Temporary Bridges	500	3x10	construction	MPPW	RNA				
PL-6	Electricity Supply									
PL-6.1	Database	100	2x8	software, data input	NEA					
PL-6.2	Solar Power	500	3x10	equipments, construction	NEA					
PL-6.3	Wind Power	500	3x10	equipments, construction	NEA					
PL-6.4	Diesel generators	1,000	3x10	equipments, construction	NEA					
PL-7	Staging area	500	3x10	estate, facilities	MOHA					

No.	Items	Cost			Responsible Organization					
		(MJPY)	MM	Breakdown H/W etc.	National Government			Local Government	Private Sectors	
<b>Strengthen Socio-Economic System</b>										
SE-1	Urban Planning									
SE-1.1	Urban Space Allocation Detail Planning	100	3x10		KVTDC	MPPW		Municipality		
SE-1.2	Assessment Planning of Intensive Development Areas	50	2x5		KVTDC	MPPW		Municipality		
SE-1.3	Assessment Planning of Migration Bypass Routes	50	2x5		KVTDC	MPPW		Municipality		
SE-1.4	Urban Zoning for Disaster Mitigation measures	400	2x10	estate, construction	KVTDC			Municipality		
SE-2	Transportation Facilities									
SE-2.1	Roads to improve access to the Valley	3,000	3x20	construction	MPPW					
SE-2.2	Roads to improve mobility inside the Valley	2,500	3x20	construction	MPPW					
SE-2.3	Improvement of bridges	2,000	3x20	construction	MPPW					
SE-3	Building									
SE-3.1	Improving Building construction	80	2x10	training	MPPW			Municipalities	Masons	
SE-3.2	National Building Code	50	2x6	seminar, training	MPPW				Nepal Engg. Assoc.	
SE-3.2	Training	200	3x8	training, seminar	MPPW			Municipalities	Masons	Nepal Engg. Assoc.
SE-3.4	Inspection of Key Buildings	200	3x10	inspection	MPPW				Nepal Engg. Assoc.	
SE-4	Electricity									
SE-4.1	Network improvement	500	2x10	equipments	NEA					
SE-5	Water Supply & Sewerage Facilities									
SE-5.1	Database system	100	2x8	software, data input	NWSC					
SE-5.2	Distribution system by water tankers	50	2x5	investigation	NWSC					
SE-5.3	Preservation of existing wells and spouts	100	3x5	investigation	NWSC			Municipalities		
SE-5.4	Preparation of earthquake resistant design manual	100	3x5	training, seminar	NWSC					
SE-6	Telecommunication facilities	50	2x5		MOC com. NTC					
SE-7	Socio-economic influence	50	2x5	seminar	MOC commerce					

Table 7.3.1 Implementation Plan (1/2)

No.	Items	Rating			Implementation Plan (Year)				
		Term	Priority	Reality	5	10	30	50	100
		A/B/C	A/B/C	A/B/C					
<b>Earthquake Disaster Assessment</b>									
ED-1	Seismological Measurements								
ED-1.1	Seismological Observation	B	B	B					
ED-1.2	GPS Observation	C	B	C					
ED-2	Basic Data								
ED-2.1	Regulation of Map Data	A	A	A					
ED-3	Geological Data								
ED-3.1	Basement Structure Measurement of Kathmandu Valley	B	B	C					
ED-3.2	Geological Database	B	A	B					
ED-4	Infrastructure Database								
ED-4.1	Building Inventory/Census	A	A	A					
ED-4.2	Life Line GIS Database	A	A	A					
ED-4.3	Bridge Ledger	A	A	A					
ED-5	Data Clearing House	B	A	C					
ED-6	Improvement of Damage Estimation								
ED-6.1	Historical Data Gathering and Analysis	A	A	A					
ED-6.2	Strong Motion Observation Network	B	A	B					
ED-7	Education and Research								
ED-7.1	Earthquake Engineering Laboratory	B	B	B					
ED-7.2	Training Earthquake Engineers	A	B	B					

No.	Item	Rating			Implementation Plan (Year)				
		Term	Priority	Reality	5	10	30	50	100
		A/B/C	A/B/C	A/B/C					
<b>Sustainable Mechanism for Development of Disaster Management</b>									
SM-1	Establishment of Legal Foundation	B	A	C					
SM-2	Establishment of Disaster Management Council								
SM-2.1	National Disaster Management Council	B	A	C					
SM-2.2	Kathmandu Valley Disaster Management Council	B	A	B					
SM-2.3	Municipality/Ward Disaster Management Council	A	A	A					
SM-3	Cooperation between Government and Private Sector	B	B	B					
SM-4	Preparation of Disaster Management Plan								
SM-4.1	National Plan	A	A	B					
SM-4.2	Central Government Plans	B	A	B					
SM-4.3	Kathmandu Valley Plan	B	A	B					
SM-4.4	Municipality Plans	A	A	A					
SM-4.5	District Plans	B	B	C					
SM-4.6	Private Plans	B	B	B					
SM-5	Emphasis of Earthquake Management in National 5 Year Plan	A	A	A					
SM-6	Community Resilience and Self-Reliance								
SM-6.1	Citizens	A	A	A					
SM-6.2	School Children	A	A	A					
SM-6.3	Civil Servants	A	A	A					
SM-6.4	Masons	A	A	A					

No.	Items	Rating			Implementation Plan (Year)				
		Term	Priority	Reality	5	10	30	50	100
		A/B/C	A/B/C	A/B/C					
<b>Maintain Governance</b>									
MG-1	Establishment of Real Time Earthquake Information System								
MG-1.1	Earthquake Information System	A	A	A					
MG-1.2	Seismic Intensity Information System	A	A	A					
MG-1.3	Earthquake Information Reporting System	A	A	A					
MG-2	Assessment of Damage Information System								
MG-2.1	Establishment of Lines of Communications	A	A	B					
MG-2.2	Improvement of Daily Business Style	C	A	C					
MG-2.3	Preparation of Taking Aerial Photos	A	B	A					
MG-3	Empowerment of Media								
MG-3.1	Seminars and Training	A	A	A					
MG-3.2	Amendment of National Broadcasting Act	B	B	C					
MG-3.3	Publicising	A	A	A					
MG-4	Establishment of Emergency Communications								
MG-4.1	Identifying the Defects of Radio Wave Propagation	A	B	A					
MG-4.2	Digital Mobile Multiplex Channel Access System	A	B	B					
MG-4.3	Simultaneous Reporting System	A	B	B					
MG-4.4	Portable Handset	A	B	C					
MG-4.5	Initiate Amateur Radio Network	A	B	A					
MG-5	Preparation for Emergency Response								
MG-5.1	Control System	A	A	B					
MG-5.2	Central Government EOC	A	A	B					
MG-5.3	Municipality/Ward EOC	A	A	A					
MG-5.4	Emergency Plans/Manuals	A	A	A					
MG-5.5	Facility for EOC	A	A	B					
MG-6	Discipline Public Sector								
MG-6.1	Discipline Public Sector	B	A	C					
MG-6.2	Line of Succession	A	A	B					
MG-6.3	Preservation of Vital Record	B	B	C					
MG-7	Preparation for Recovery								
MG-7.1	Capacity Building	C	B	C					
MG-7.2	Review/Evaluation of Existing Priorities and Projects	C	B	B					
MG-7.3	Preparedness	C	B	C					

**Table 7.3.2 Implementation Plan (2/2)**

No.	Items	Rating			Implementation Plan (Year)				
		Term	Priority	Reality	5	10	30	50	100
		A/B/C	A/B/C	A/B/C					
<b>Protect Life and Property of the People</b>									
PL-1	Search and Rescue								
PL-1.1	Plan for Improvement of Research and Rescue	B	A	B					
PL-1.2	Acceptance of International Support	B	A	C					
PL-1.3	Improvement of Disaster Medicine	C	B	C					
PL-1.4	Food and Water Supply	B	A	C					
PL-2	Shelter and Evacuation								
PL-2.1	Plan for Shelter, Evacuation and Removal	C	B	B					
PL-3	Medical Problem								
PL-3.1	Public Health Care	B	A	A					
PL-3.2	Remains	C	B	C					
PL-4	Other Functions								
PL-4.1	Security	B	B	A					
PL-4.2	Firefighting	B	B	B					
PL-4.3	Management of Volunteers	B	B	C					
PL-4.4	Safety Inspections	B	B	B					
PL-4.5	Debris Removal	B	B	C					
PL-5	Transportation System (Roads and Bridges)								
PL-5.1	Database	A	A	A					
PL-5.2	Temporary Bridges	B	B	C					
PL-6	Electricity Supply								
PL-6.1	Database	A	A	A					
PL-6.2	Solar Power	B	C	C					
PL-6.3	Wind Power	C	C	C					
PL-6.4	Diesel Generators	B	B	C					
PL-7	Staging Area	A	B	B					

No.	Items	Rating			Implementation Plan (Year)				
		Term	Priority	Reality	5	10	30	50	100
		A/B/C	A/B/C	A/B/C					
<b>Strengthen Socio-Economic System</b>									
SE-1	Urban Planning								
SE-1.1	Urban Space Allocation Detail Planning	A	A	A					
SE-1.2	Assignment Planning of Intensive Development Areas	C	A	B					
SE-1.3	Assignment Planning of Migration Bypass Routes	C	B	C					
SE-1.4	Urban Zoning for Disaster Mitigation measures	C	A	B					
SE-2	Transportation Facilities								
SE-2.1	Roads to Improve Access to the Valley	C	A	A					
SE-2.2	Roads to Improve Mobility Inside the Valley	C	A	B					
SE-2.3	Improvement of Bridges	C	A	B					
SE-3	Building								
SE-3.1	Improving Building construction	A	A	A					
SE-3.2	National Building Code	A	A	A					
SE-3.2	Training	A	A	A					
SE-3.4	Inspection of Key Buildings	A	A	A					
SE-4	Electricity								
SE-4.1	Network Improvement	B	A	B					
SE-5	Water Supply & Sewerage Facilities								
SE-5.1	Database System	A	A	A					
SE-5.2	Distribution System by Water Tankers	B	B	C					
SE-5.3	Preservation of Existing Wells and Spouts	A	A	B					
SE-5.4	Preparation of Earthquake Resistant Design Manual	B	A	B					
SE-6	Telecommunication Facilities	A	B	B					
SE-7	Socio-Economic Influence	B	A	B					



# *Figures*

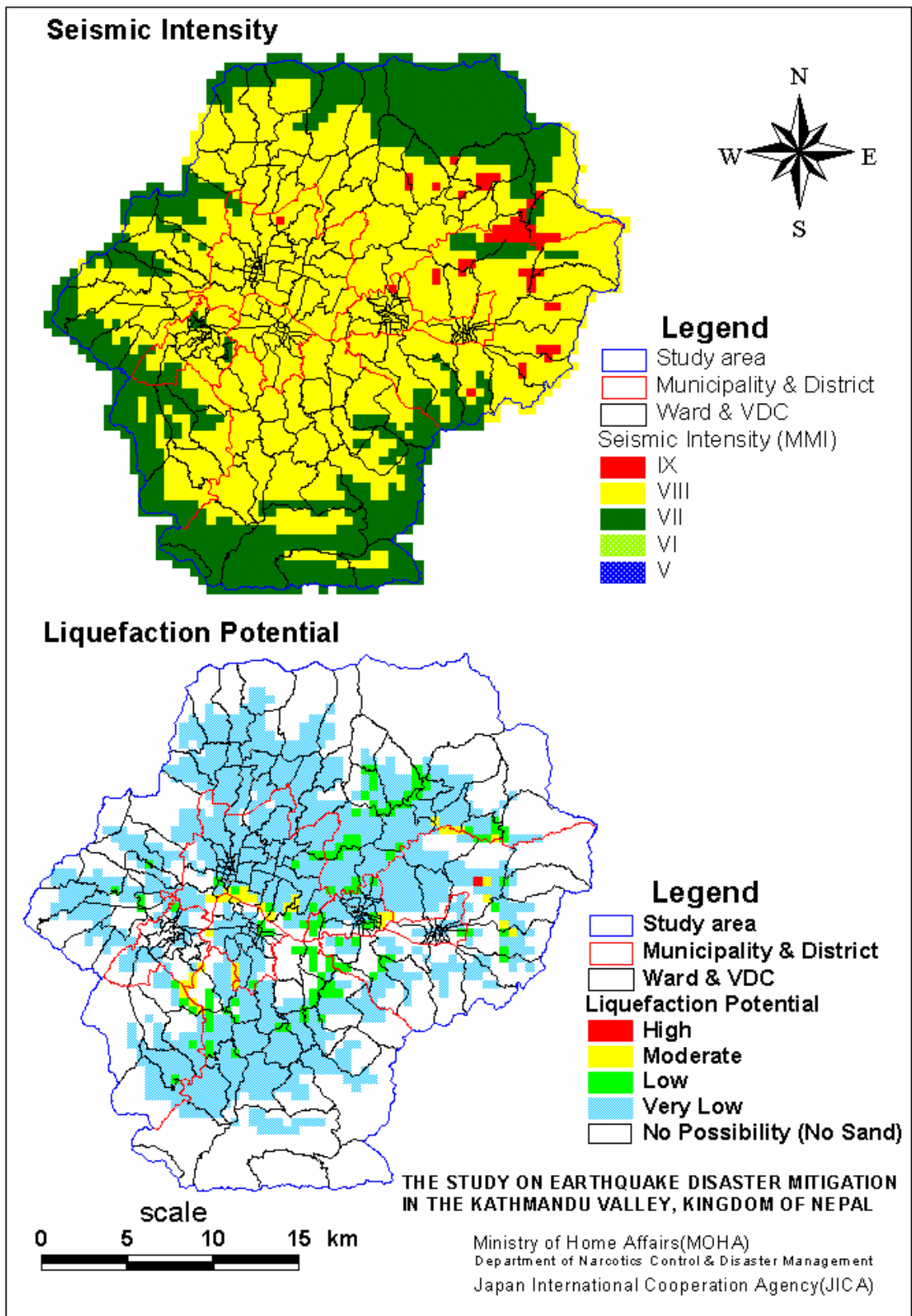


Figure2.1.2 Seismic Intensity and Liquefaction Potential of the 1934 Earthquake

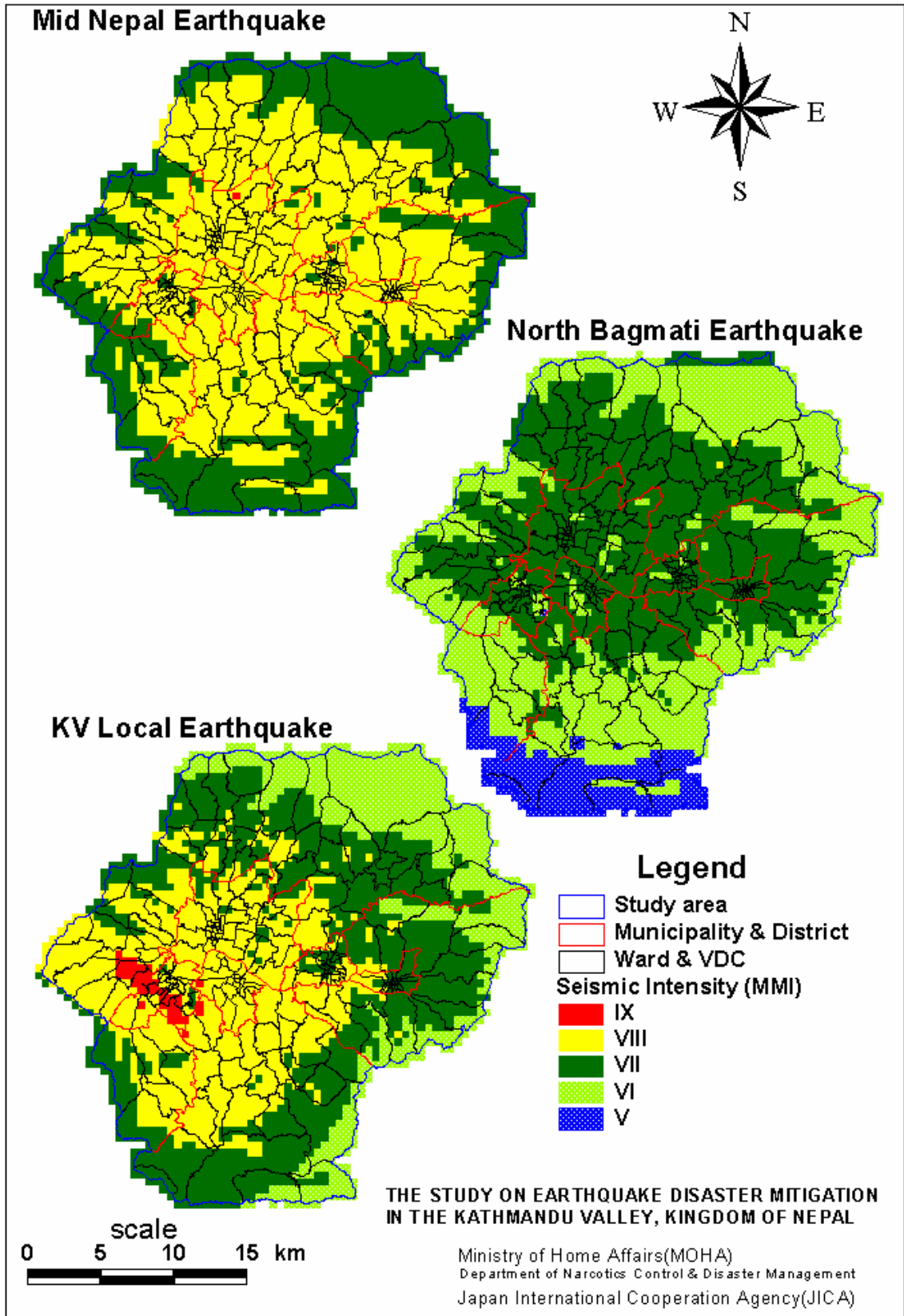
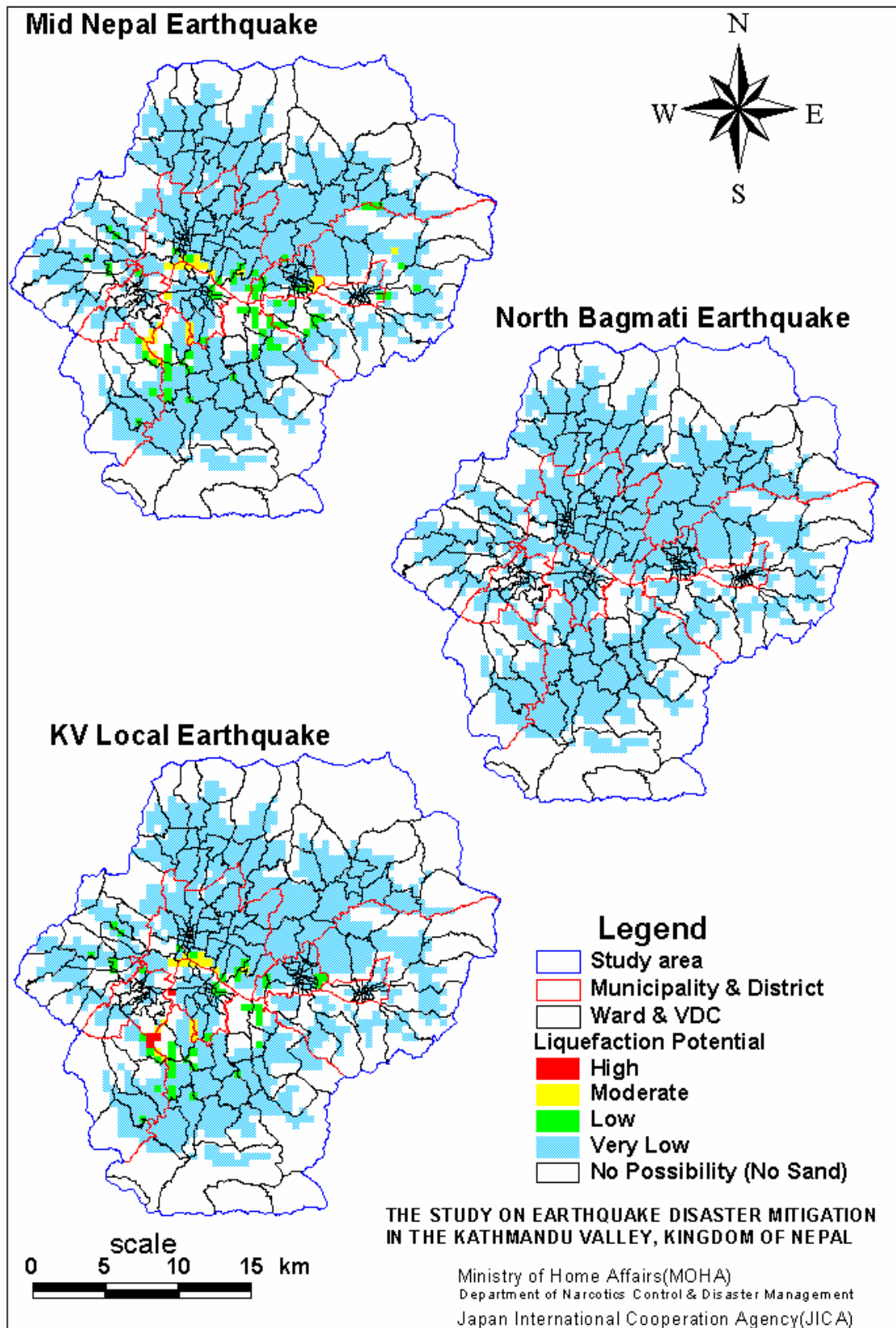


Figure2.1.3 Seismic Intensity Distribution



**Figure2.1.4 Liquefaction Potential Distribution**

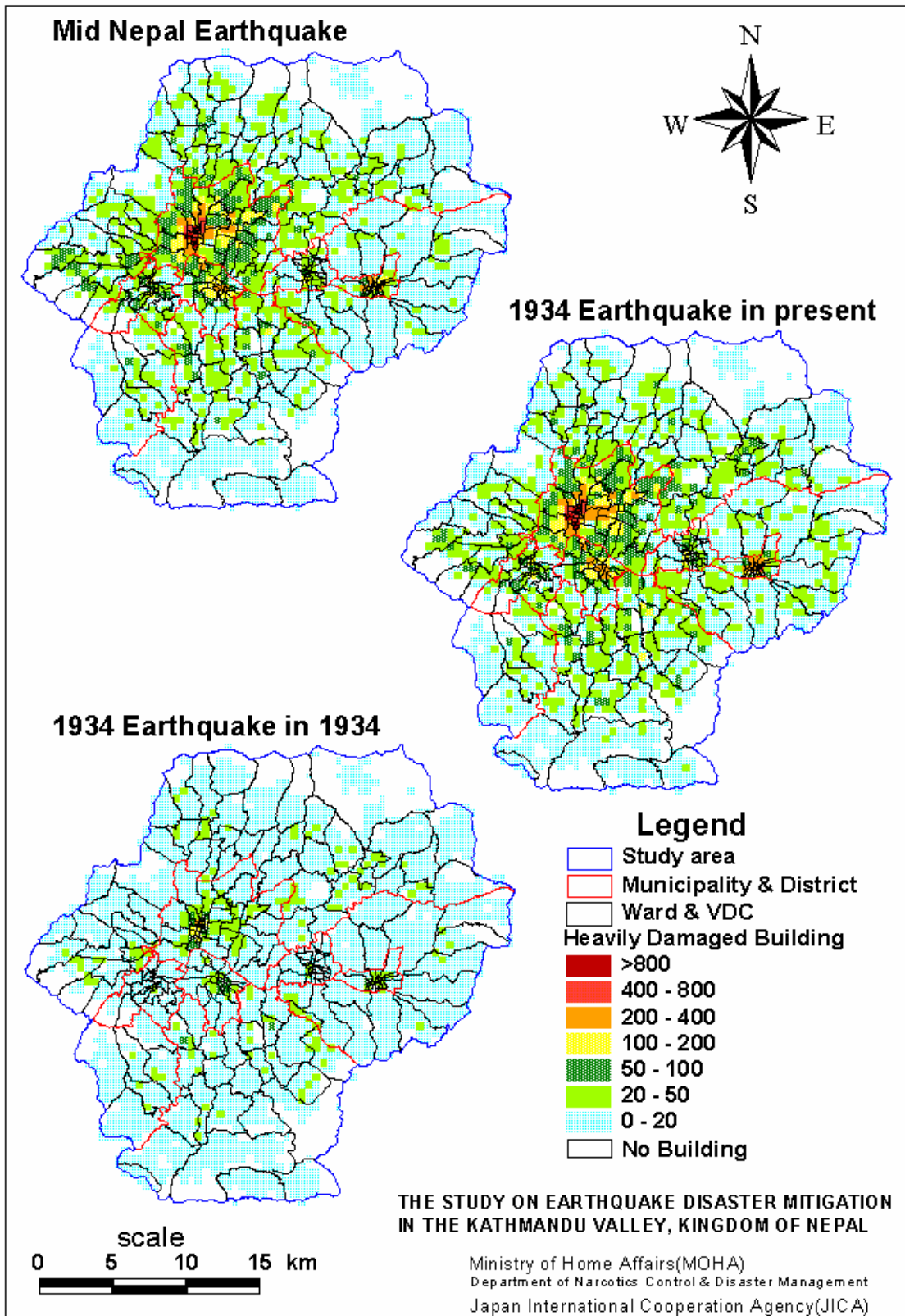


Figure2.2.1 Heavily Damaged Building Number Distribution

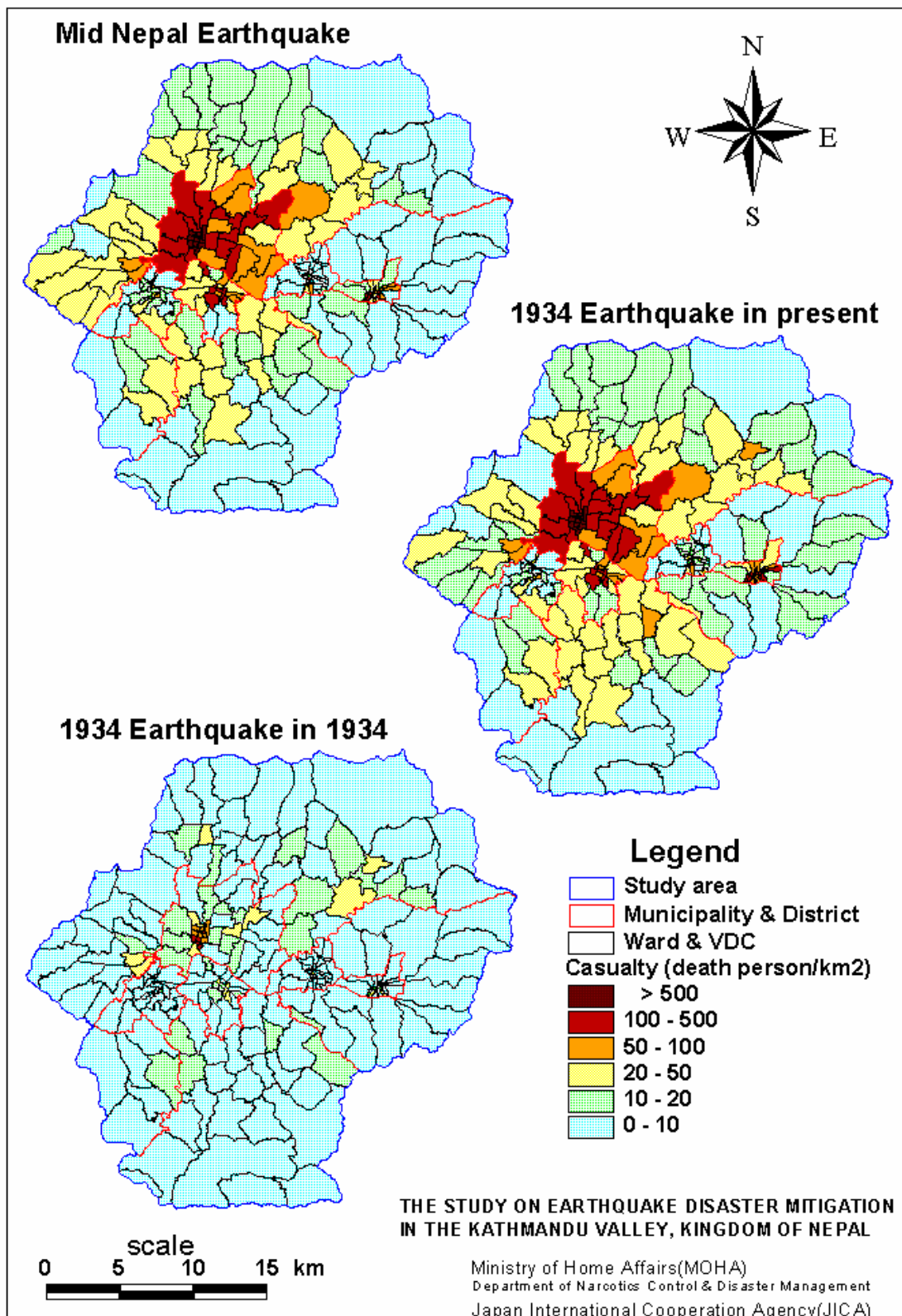


Figure2.2.2 Death Toll Density Distribution

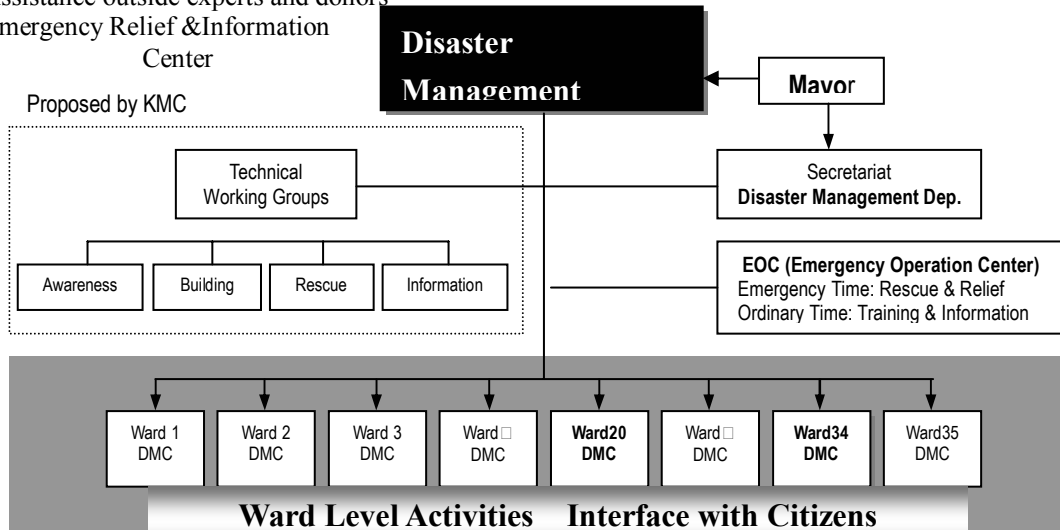
## Establish Disaster Management Committee and Relating Institutions in Kathmandu Municipality

### ■ Goals

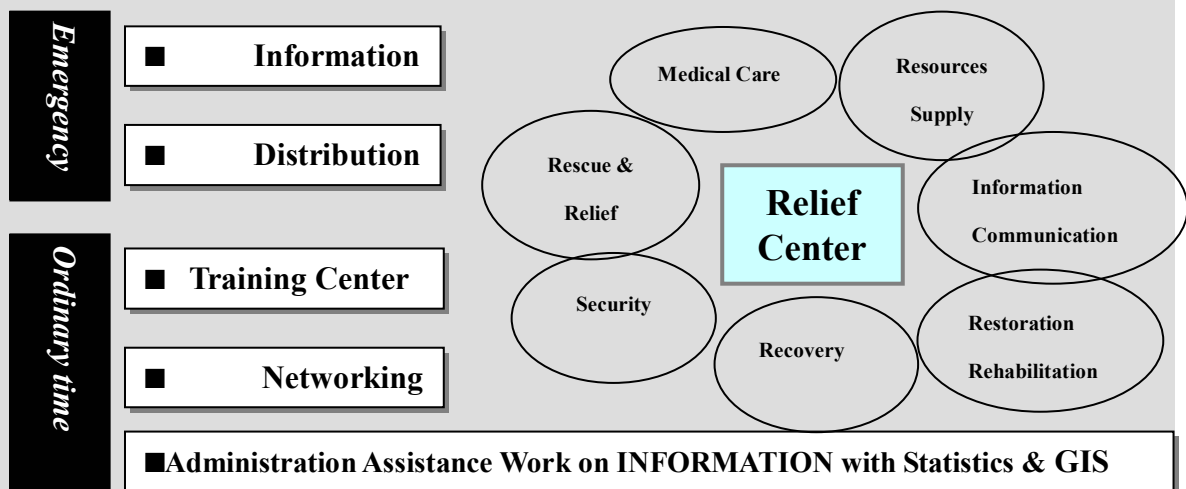
- Cooperation between Central & Local Government
- Define Administrative Roles
- Empower Local Governments

### ■ Actions

- Disaster Management Committee, Disaster Management Department
- Technical Working Groups (Awareness, Rescue/Relief, Building Codes, Information)
- Assistance outside experts and donors
- Emergency Relief & Information Center



## Emergency Relief & Information Center Plan



## Civil Relief / Local Institution Development

### ■ Goal

Increase Resilience in the Wards

### ■ Actions

#### Empower Local Institutions

- Development of local Leaders
- Drills and Seminars at local level

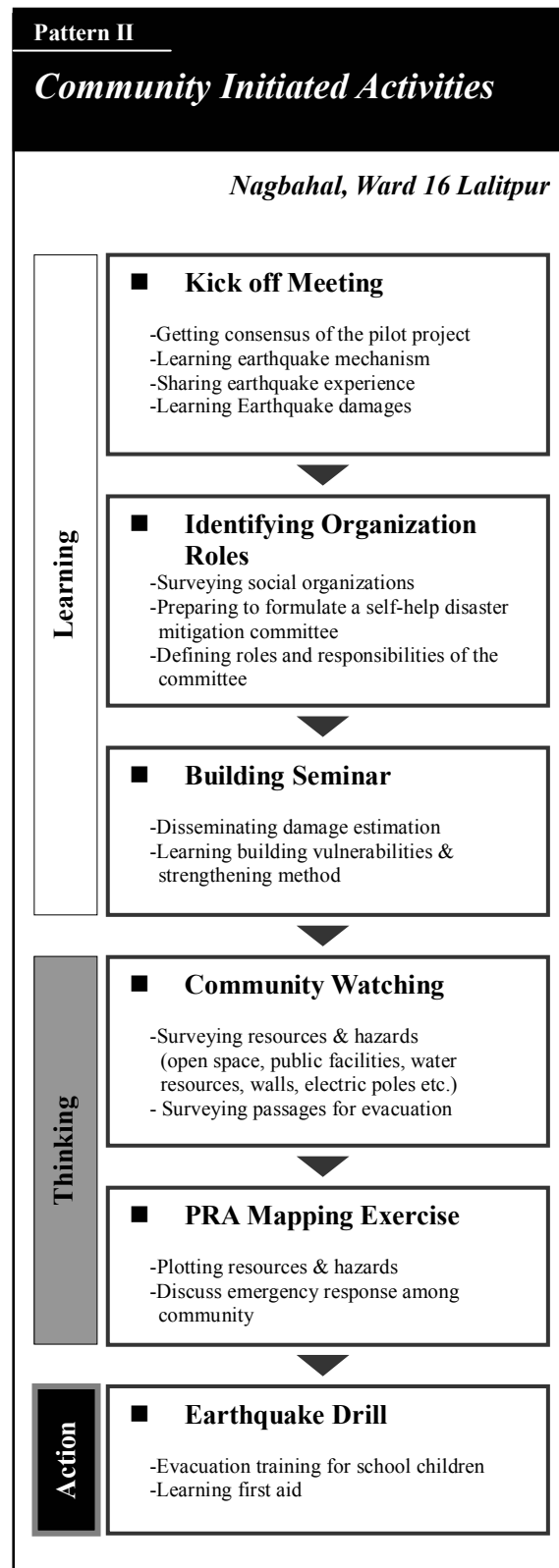
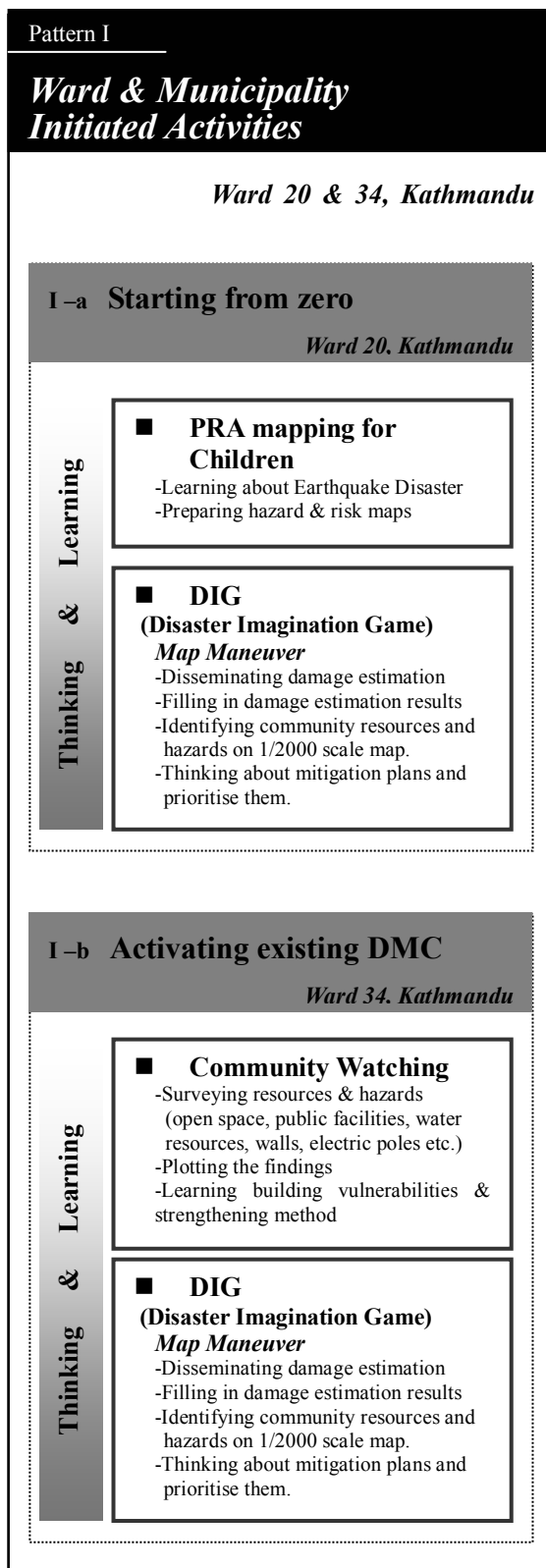
#### Local Area Disaster Mitigation Activities

- Application plan for Shelter, Roads, Open Space, Water Resources, Public Space
- Inspection of earthquake resilience, drafting Hazard Maps, Avoid Maps

*Participatory Workshops*



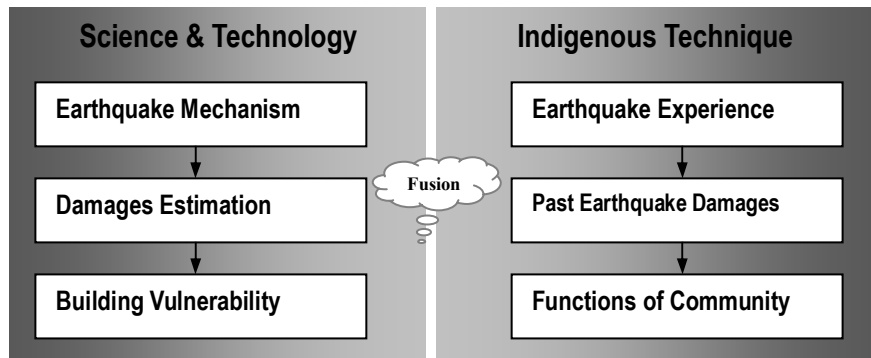
Figure 3.1.11 A Proposal for Disaster Management in Kathmandu Municipality



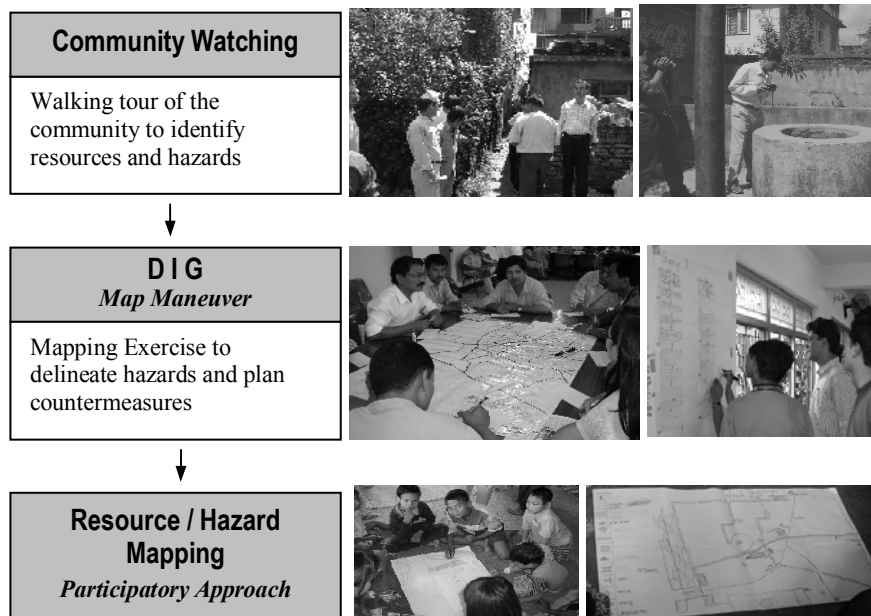
**Figure 3.3.2 Community Activities of the Pilot Project**



**Learn** Learn scientific & technological and indigenous knowledge



**Think & Plan** Think and plan countermeasures with the collaboration of concerned stakeholders



**Action** Acquire direct experience and training

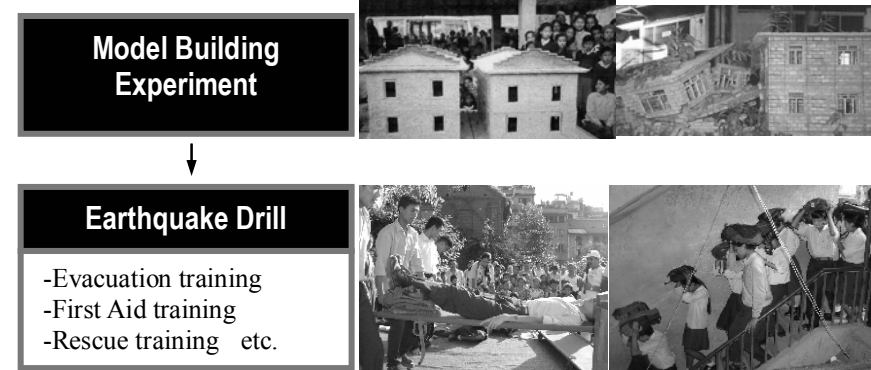


Figure 3.3.4 Model Plan for Earthquake Disaster Mitigation Activities

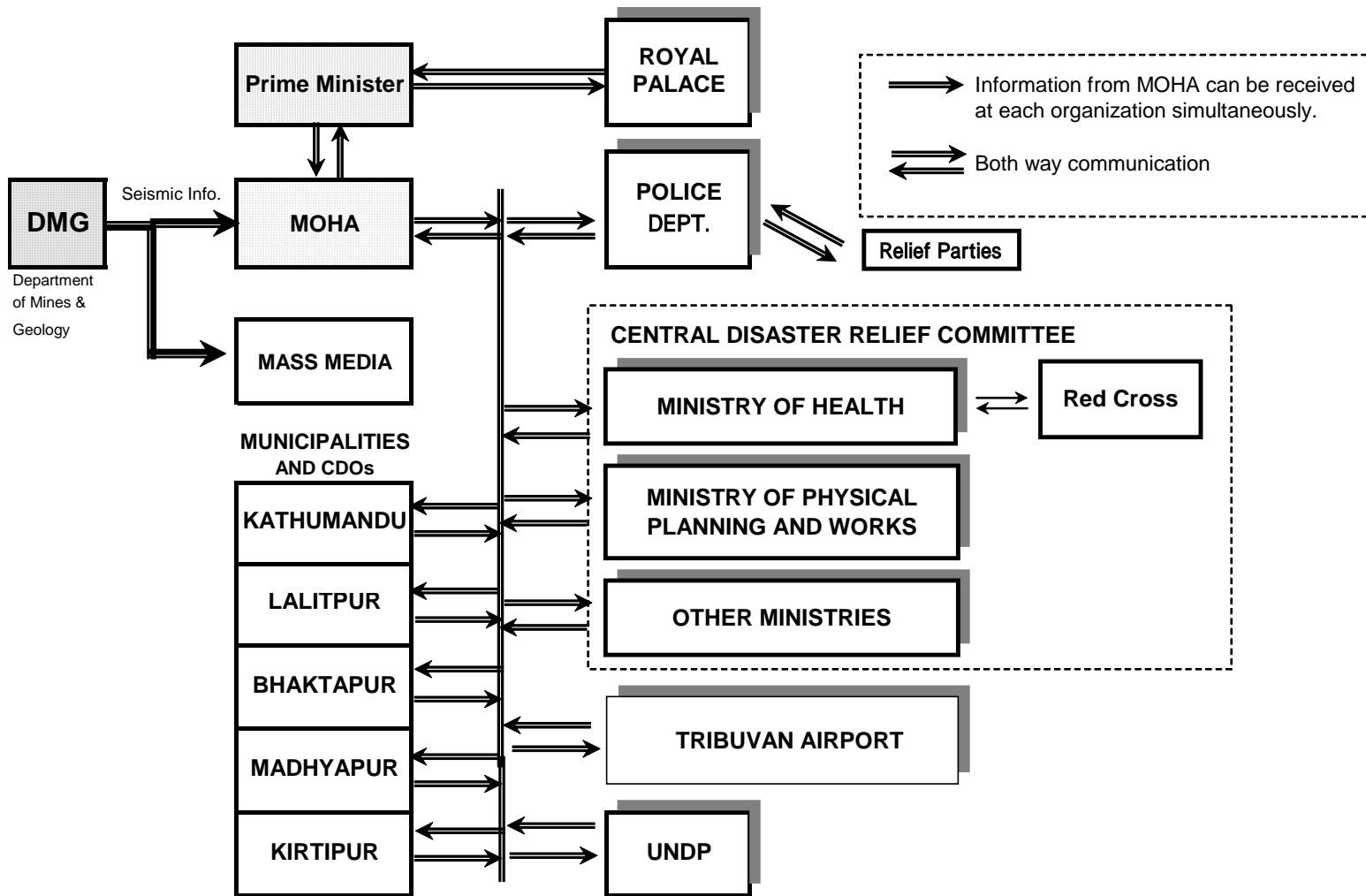


Figure 4.4.1 Administrative Communications Network (Kathmandu Valley)