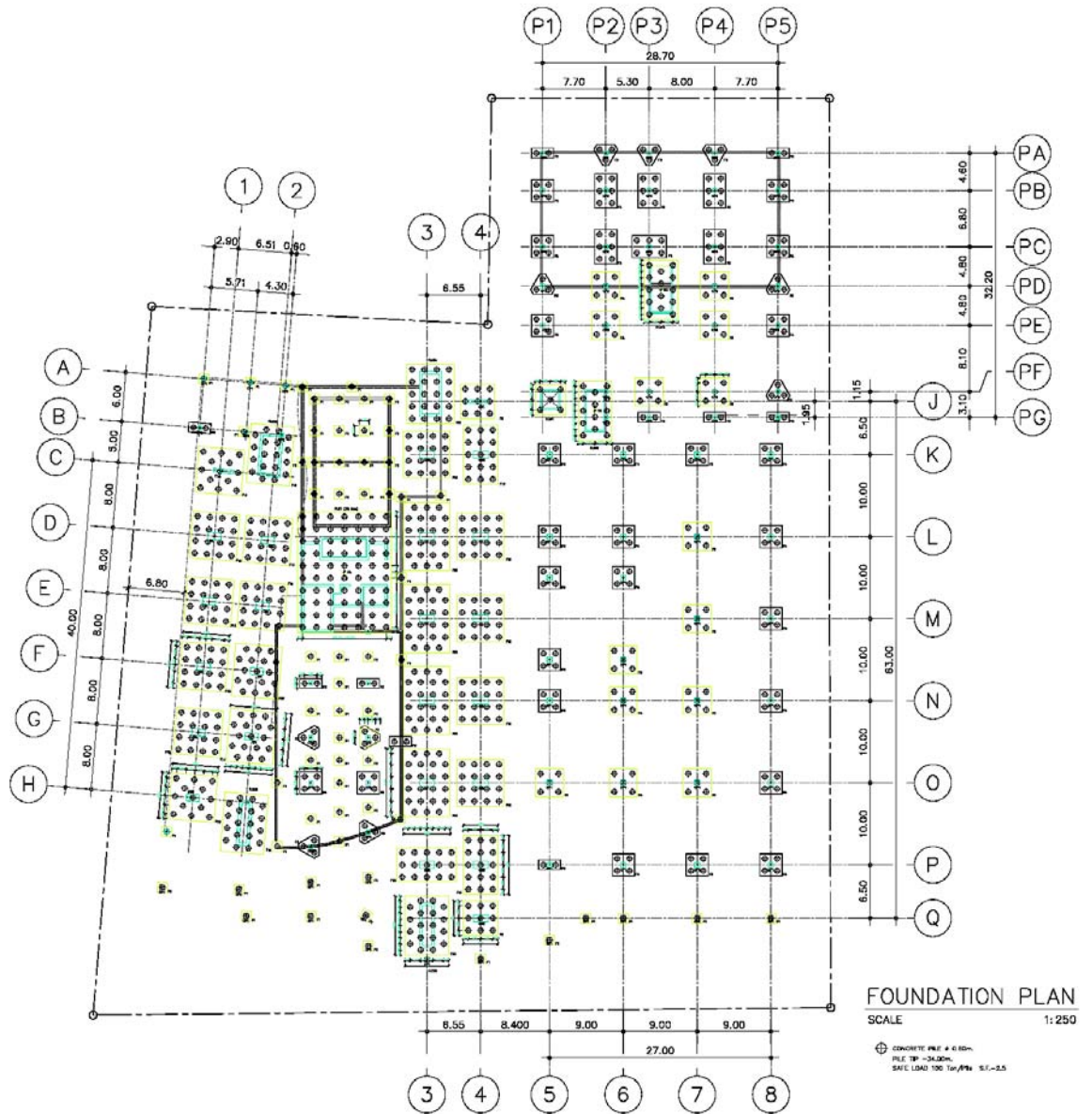
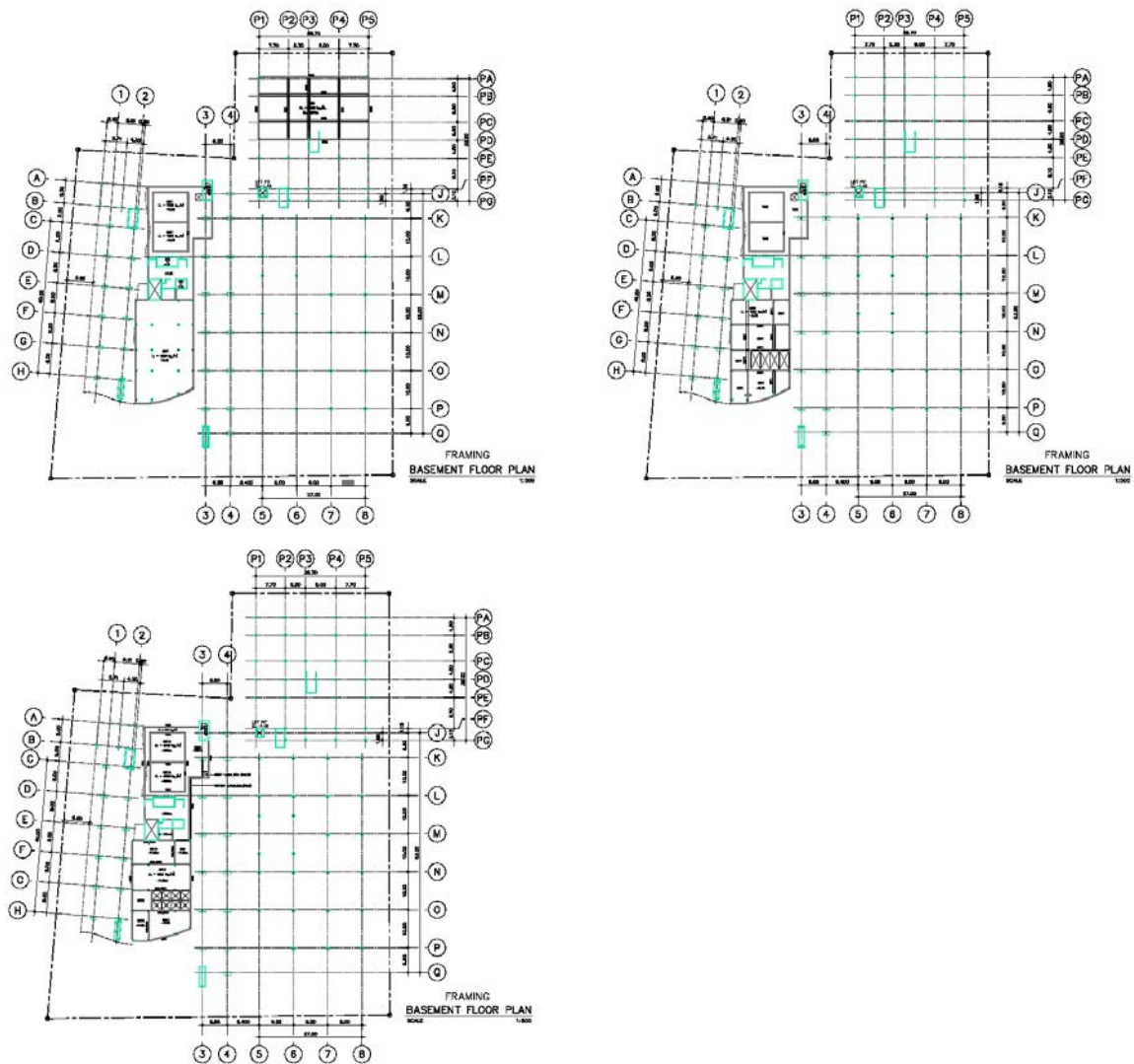


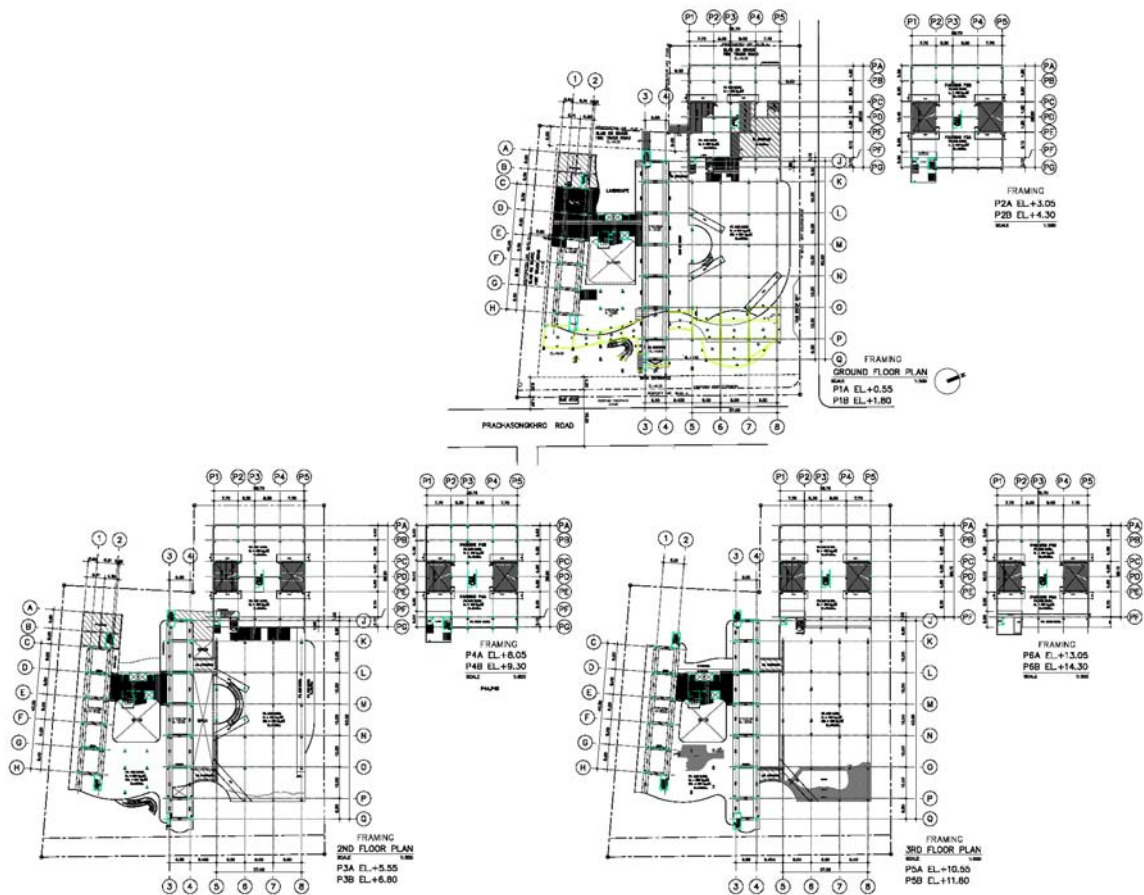
(2) Site-B'



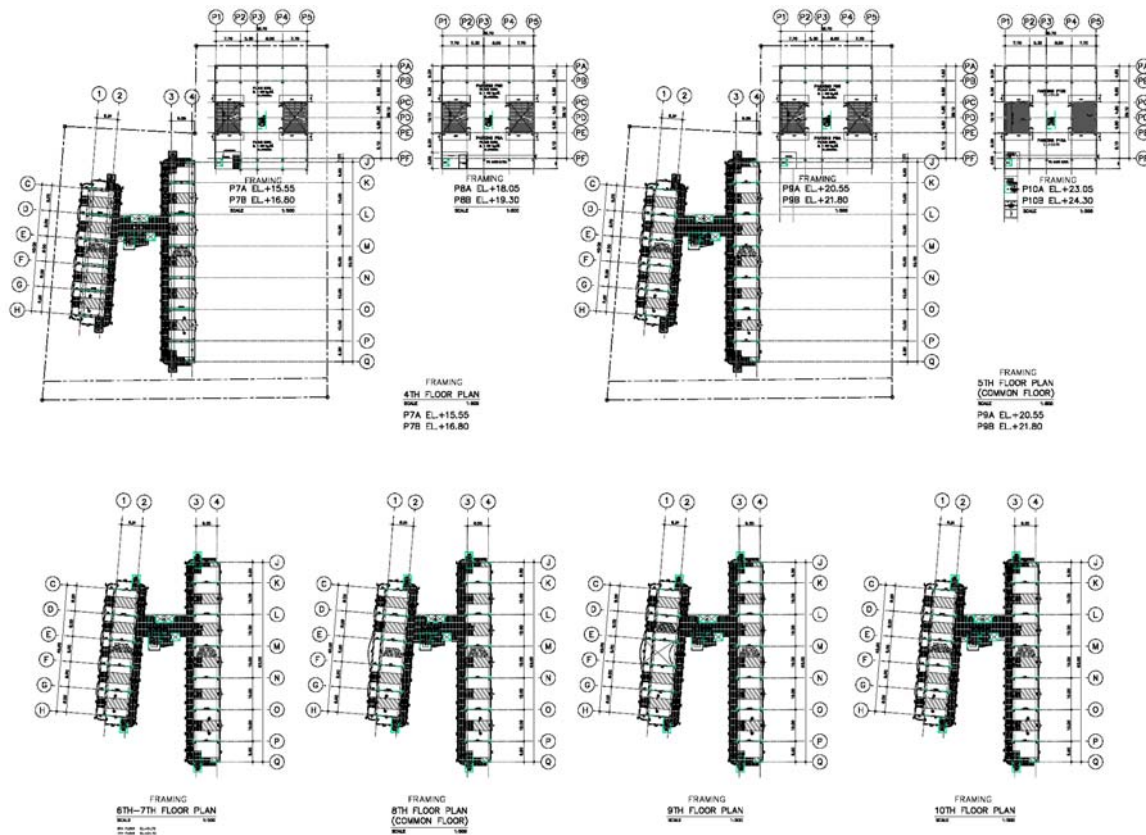
Foundation Plan



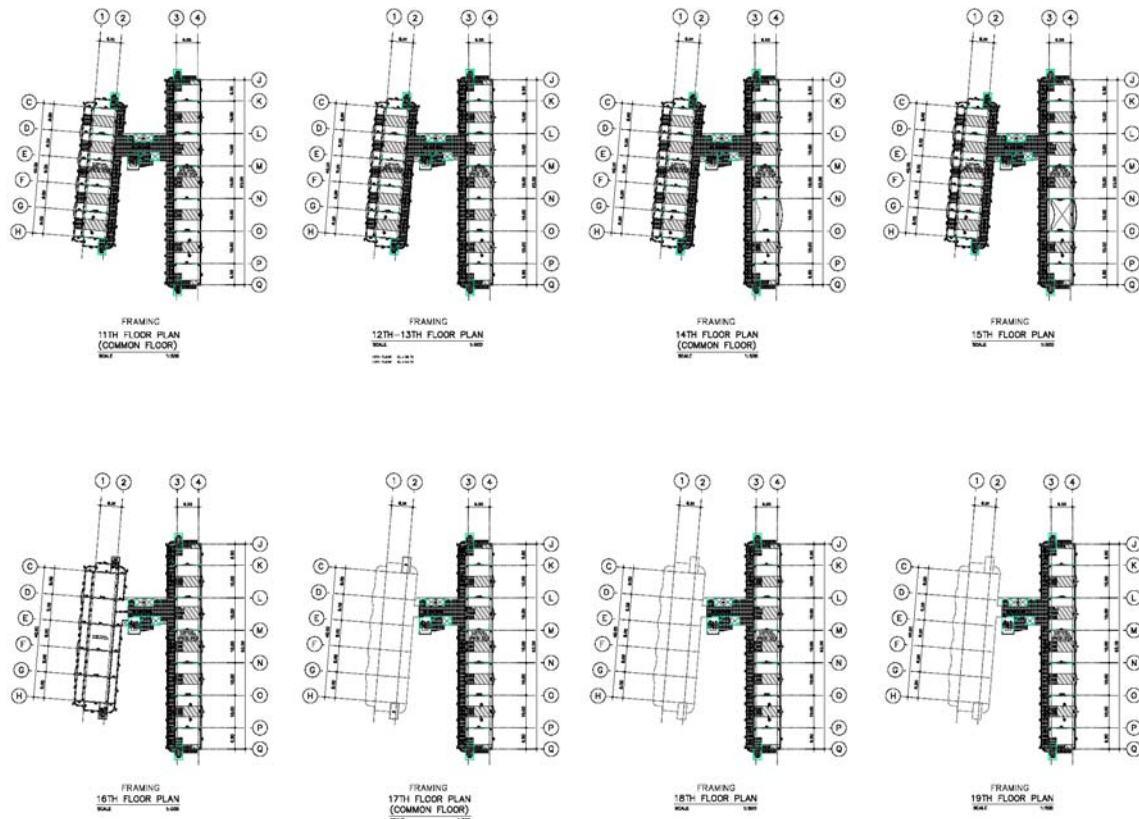
Framing Plan (Basement)



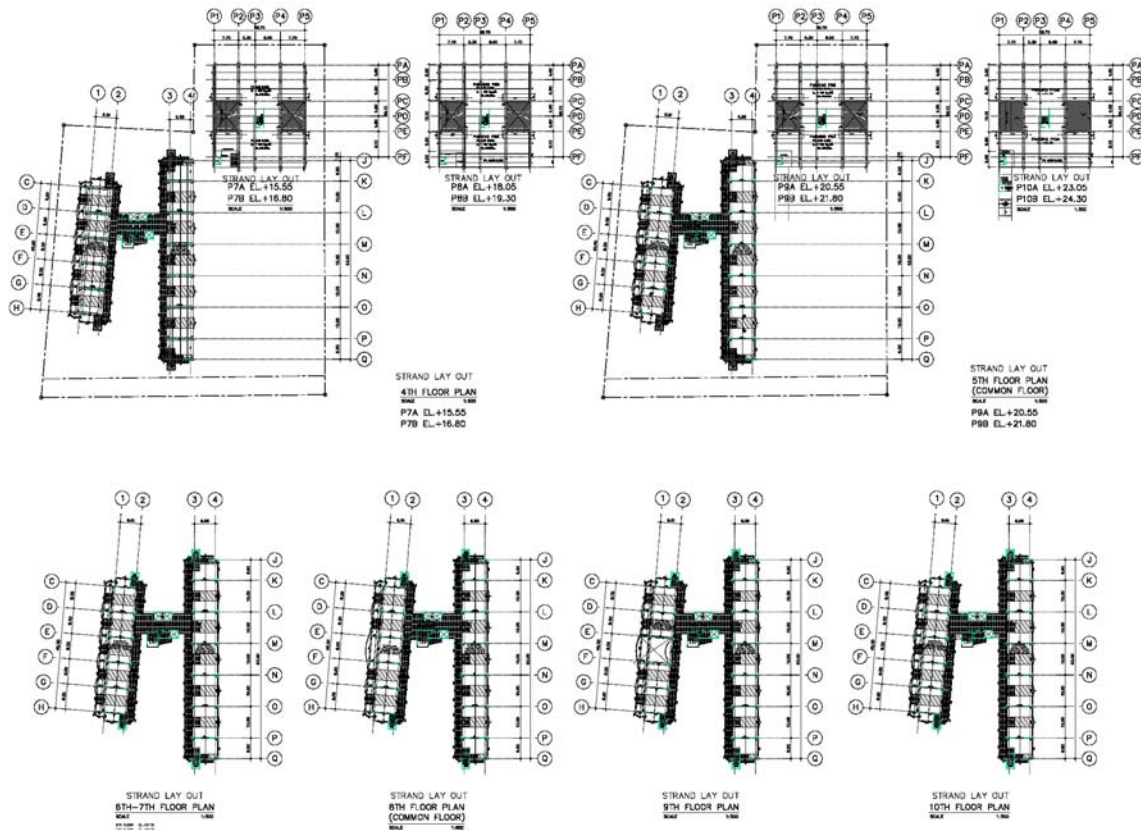
Framing Plan (Ground Floor ~ P6B)



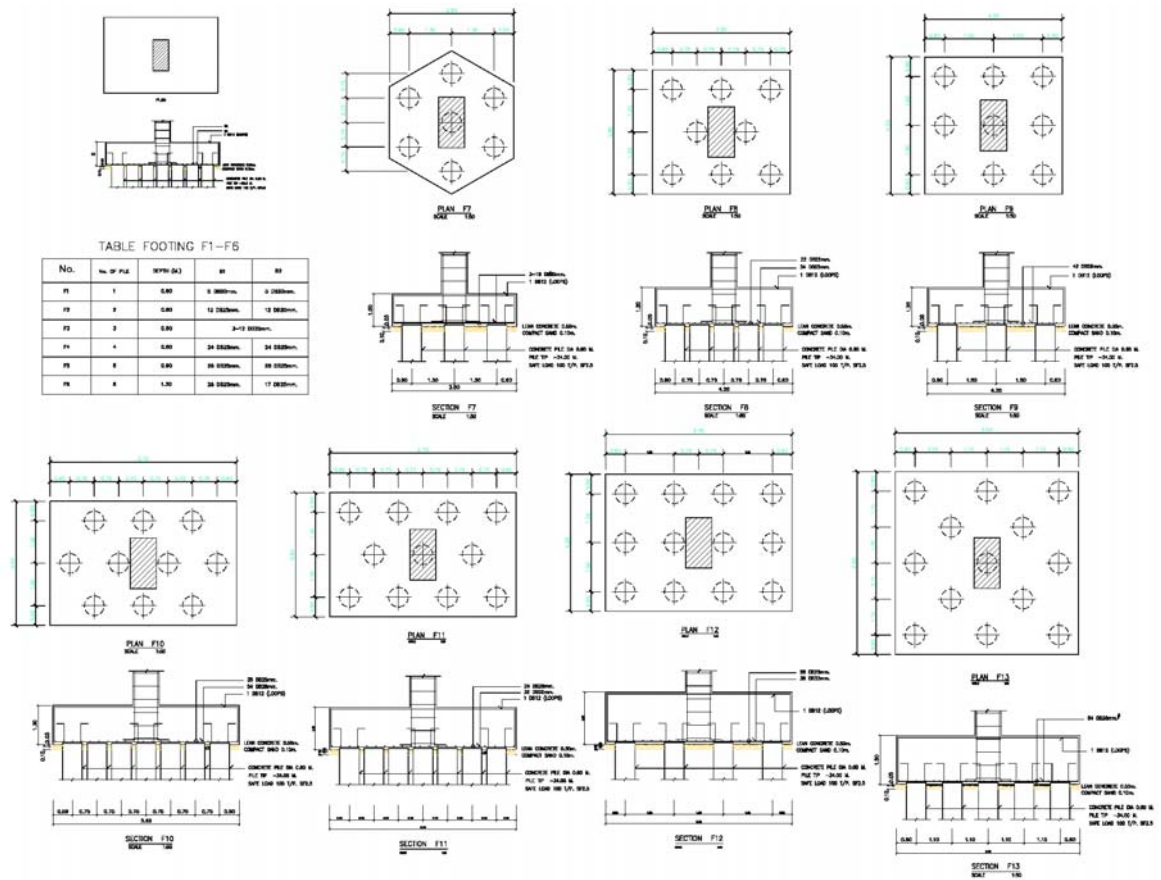
Framing Plan (4th Floor ~ 10th Floor)



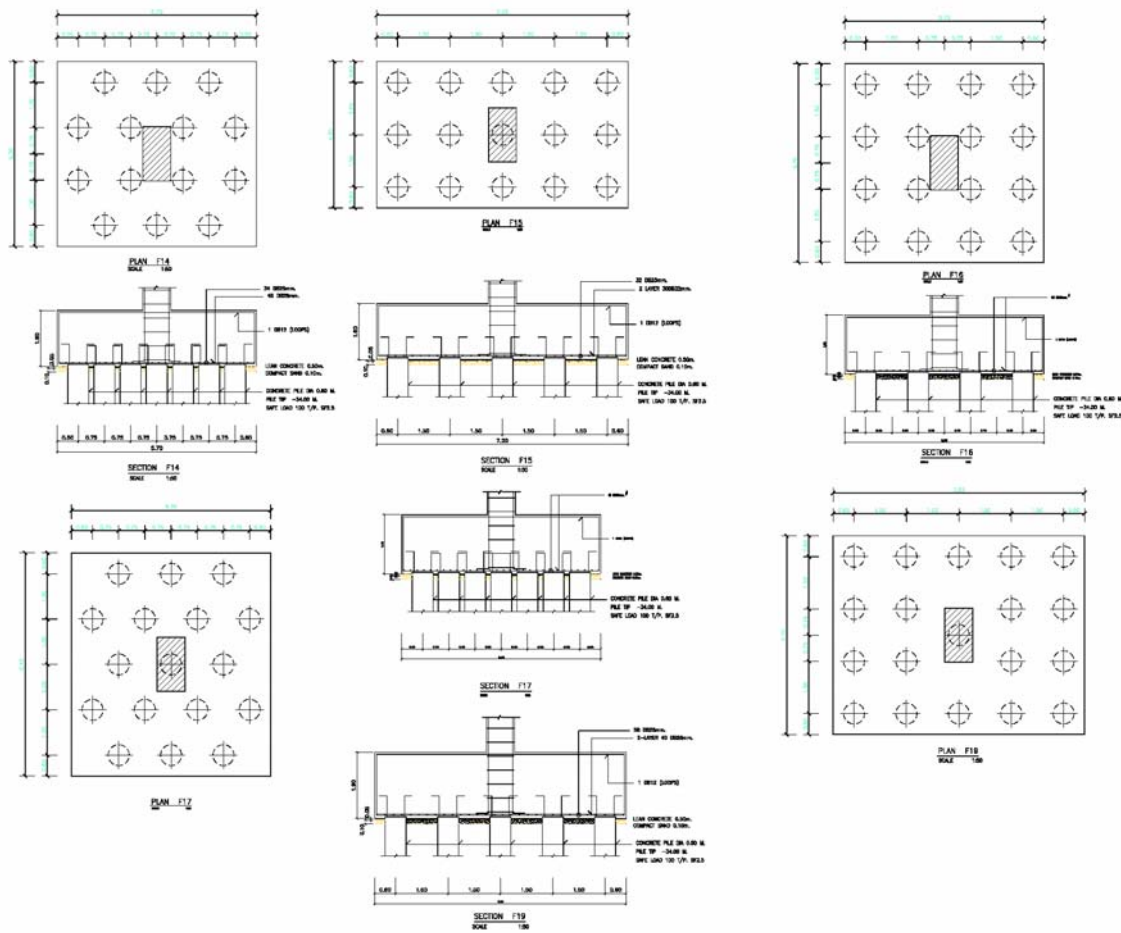
Framing Plan (11th Floor ~ 19th Floor)



Strand Layout Plan (4th Floor ~ 10th Floor)



Foundation Plan (1/3)



Foundation Plan (2/3)