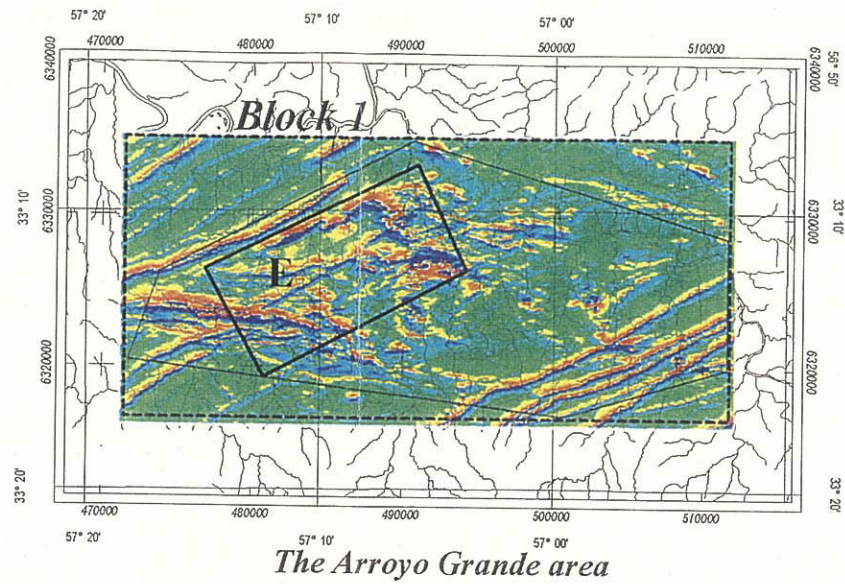
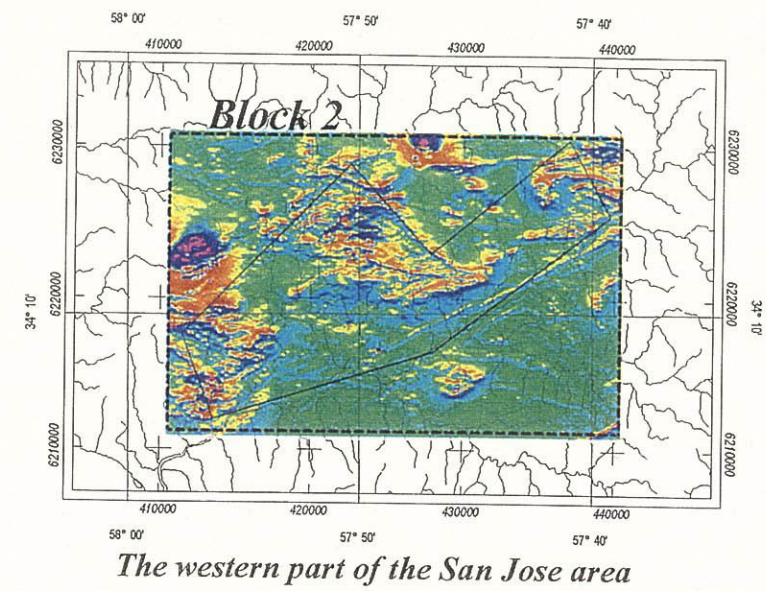
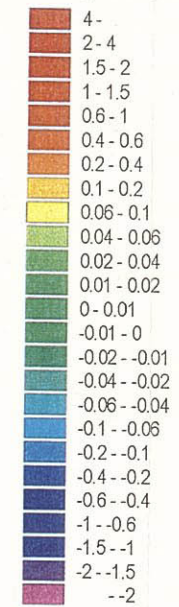


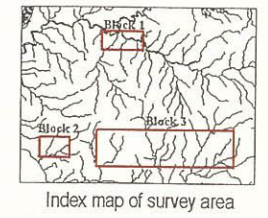
Fig. II-4-5 TMI reduced to the pole in the zones of the geological survey



Vertical magnetic gradient(nT/m)



LEGEND



- Phase II survey zone
- Phase I geology and geochemical surveyed area
- River



Projection UTM
Zone 21
Spheroid WGS84

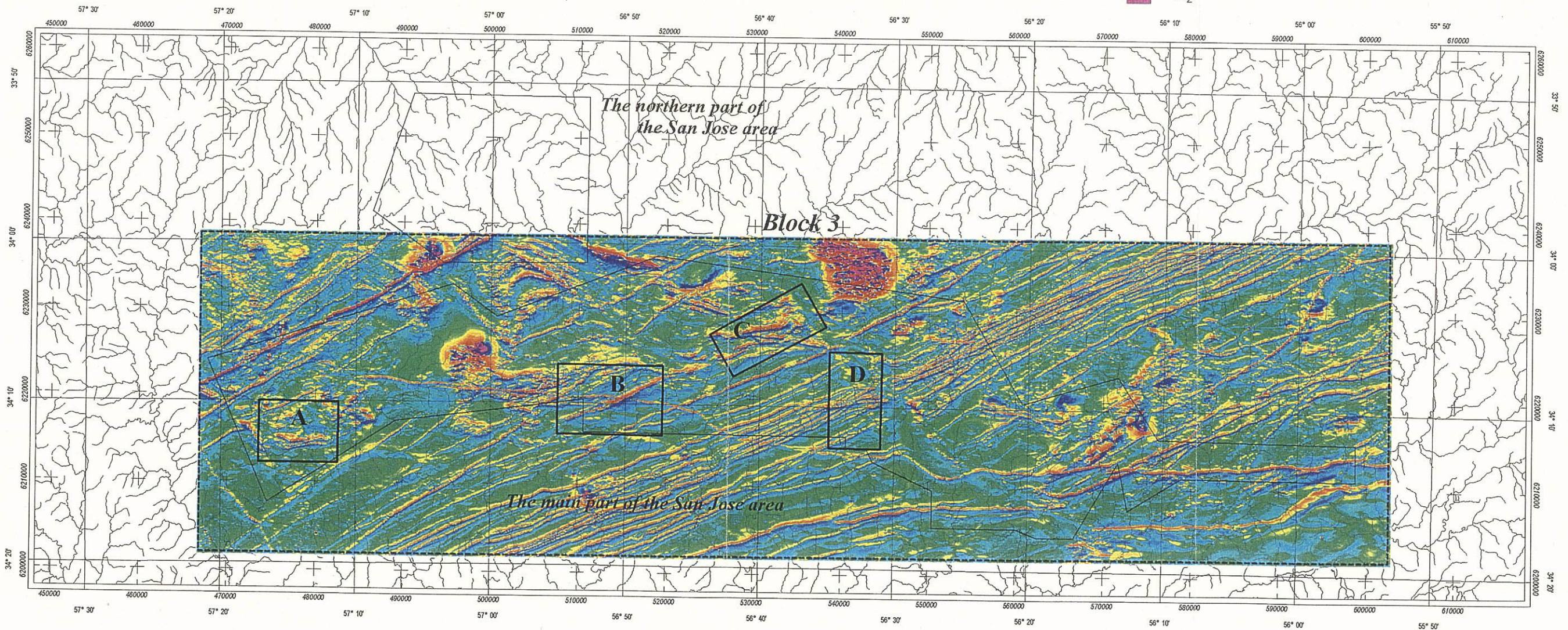
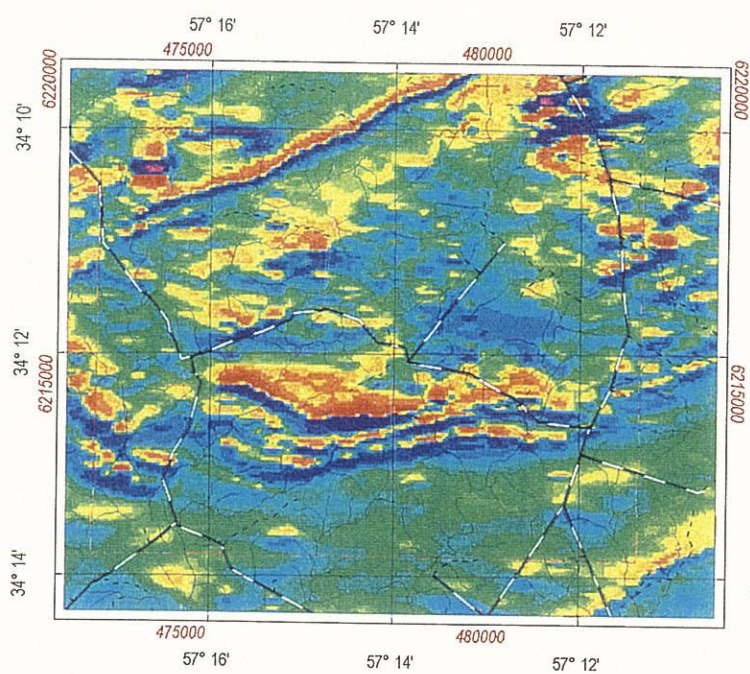
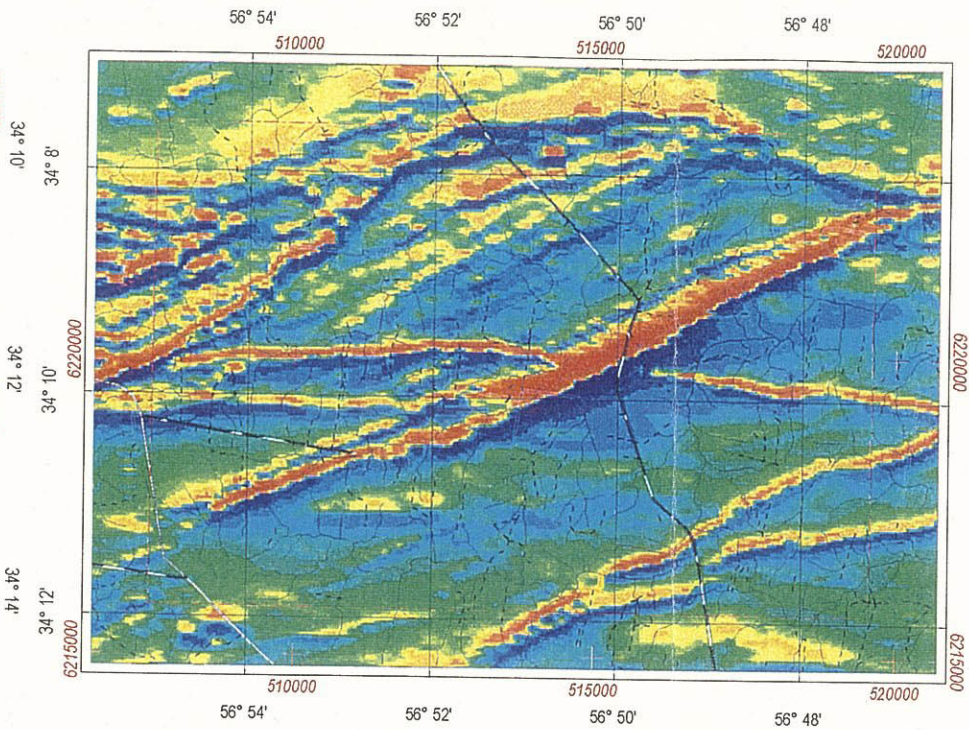


Fig. II-4-6 Magnetic vertical gradient of the survey area

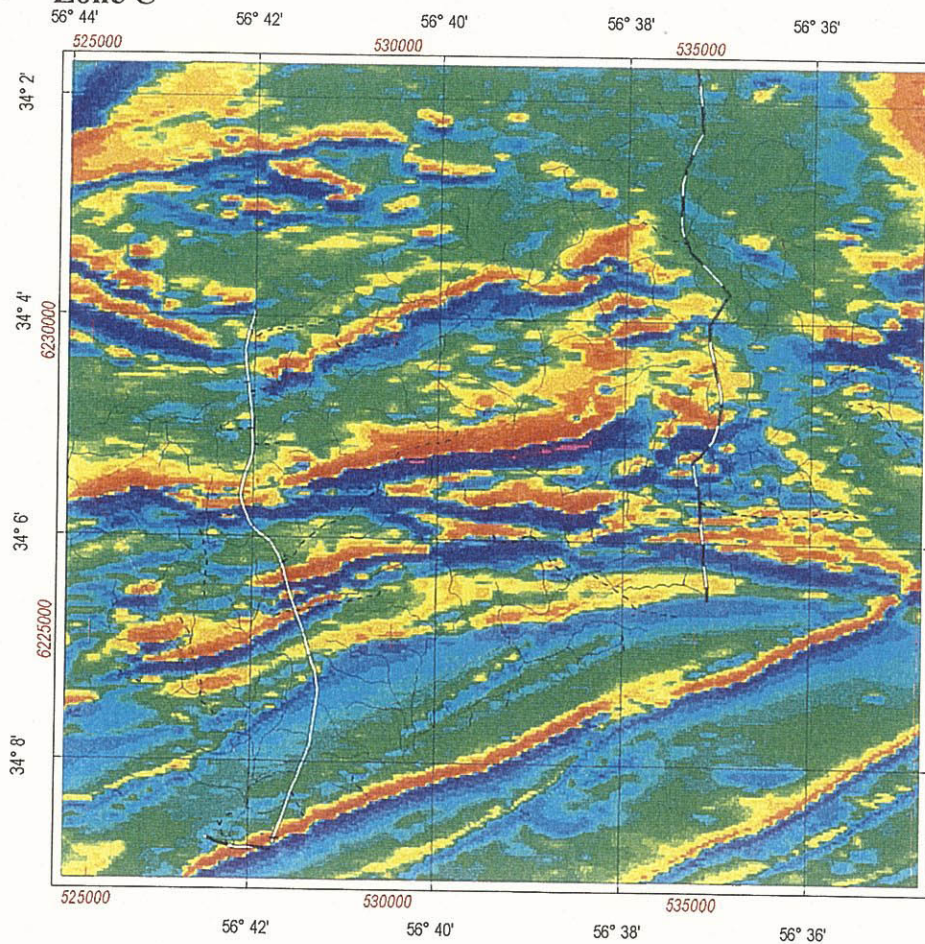
Zone A



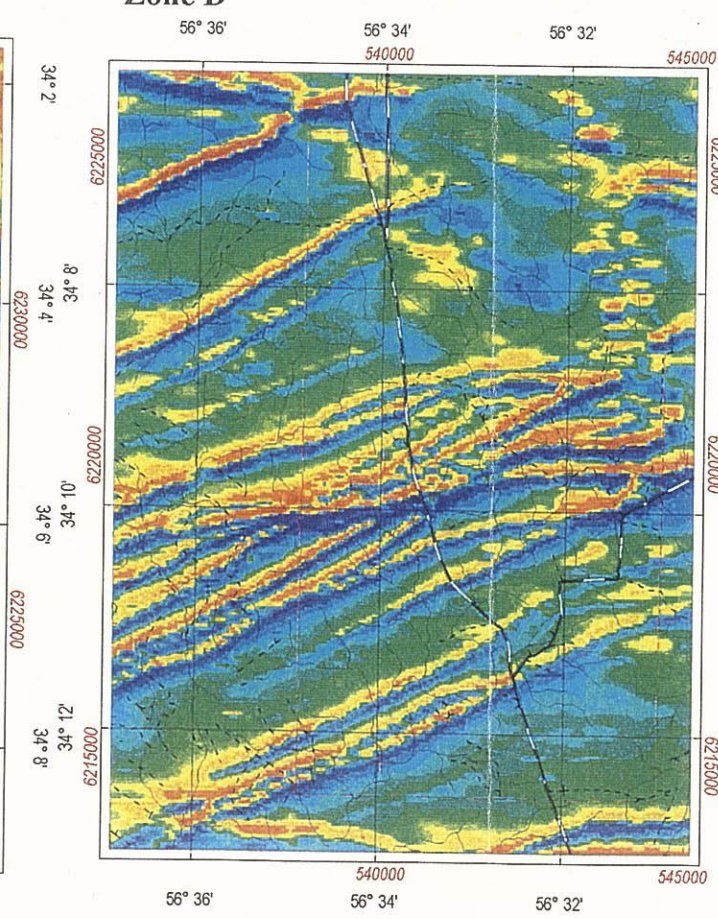
Zone B



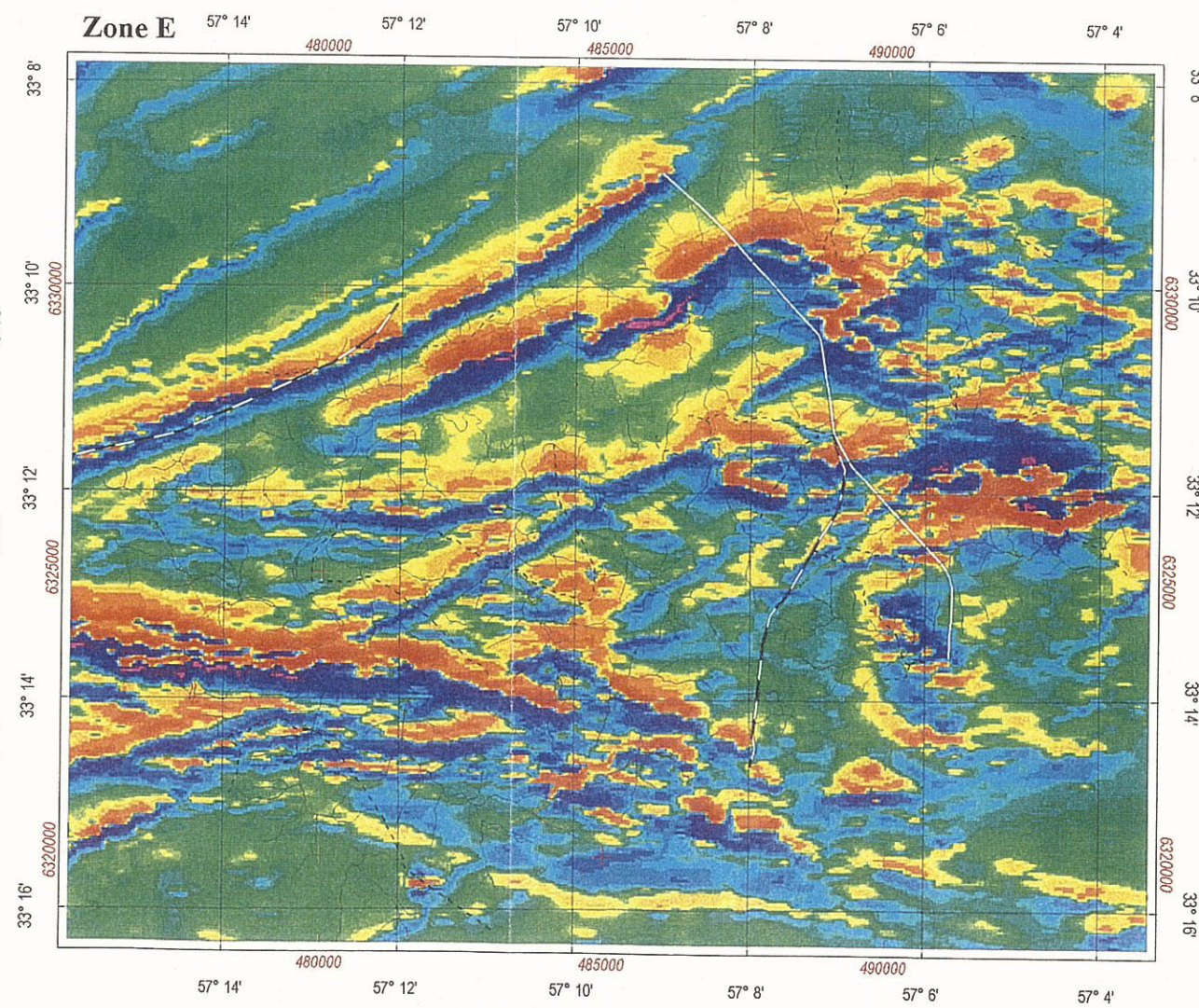
Zone C



Zone D

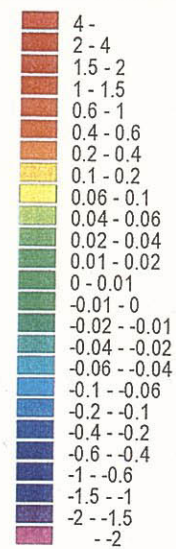


Zone E

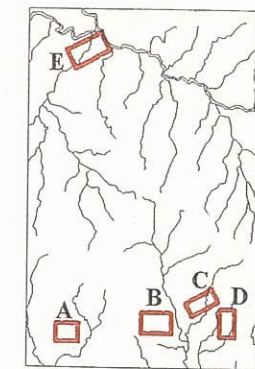


LEGEND

Vertical magnetic gradient (nT/m)



- Survey zone
- Stream
- Road



Index map of survey zone

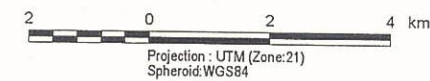


Fig. II-4-7 Magnetic vertical gradient in the zones of the geological survey

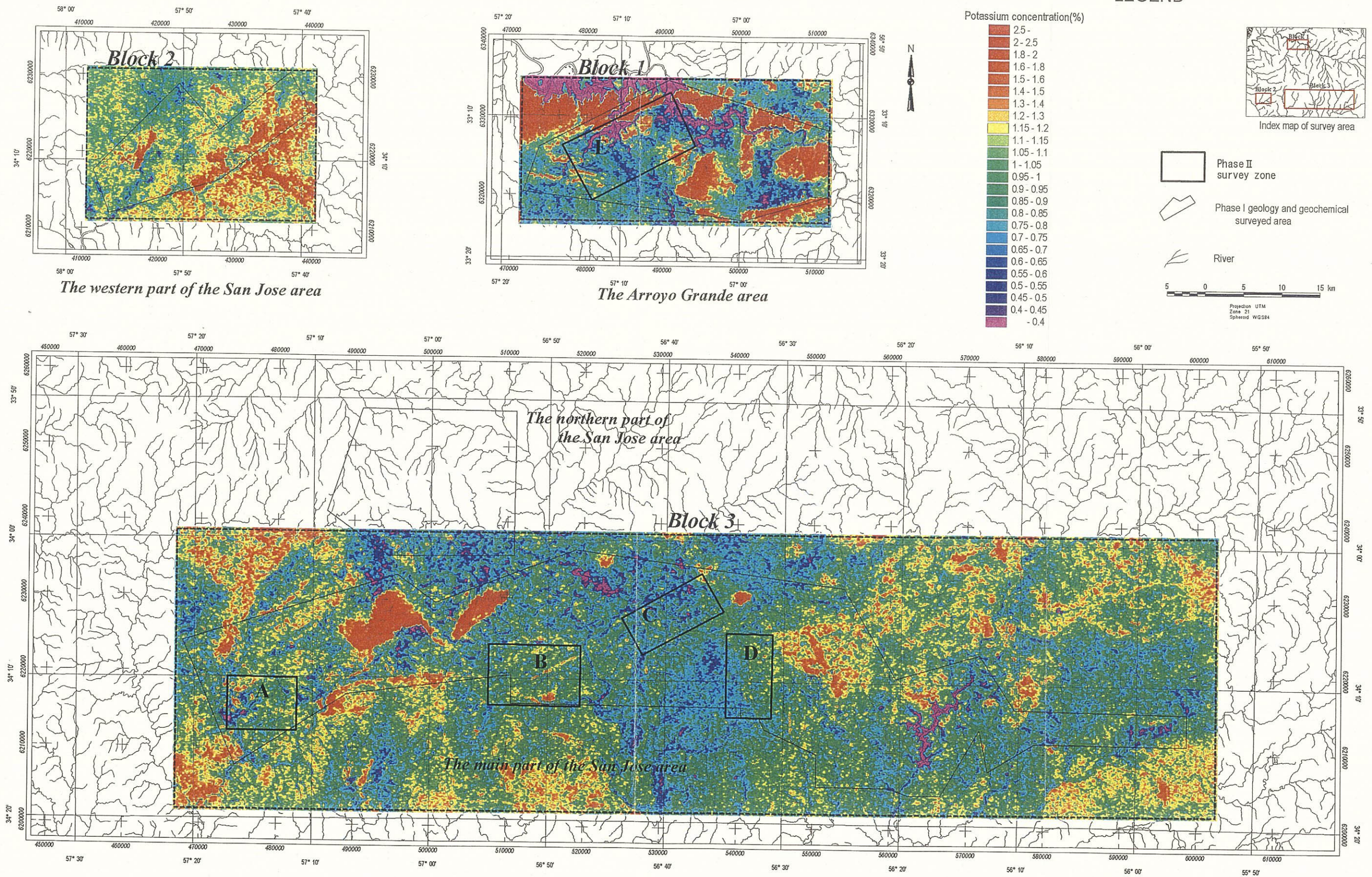


Fig. II-4-8 Airborne radiometric map of Potassium

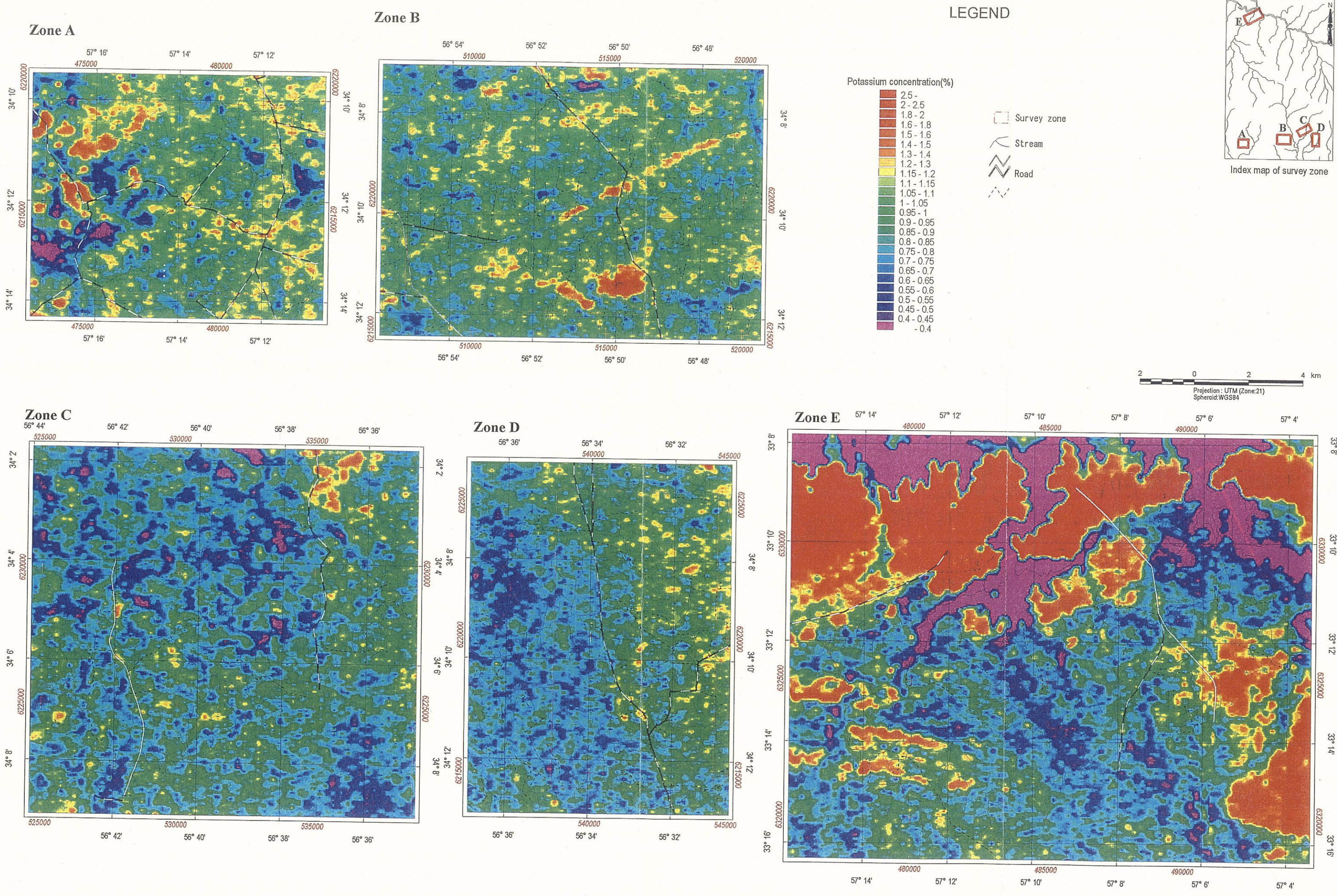


Fig. II-4-9 Airborne radiometric map of Potassium in the zones of the geological survey