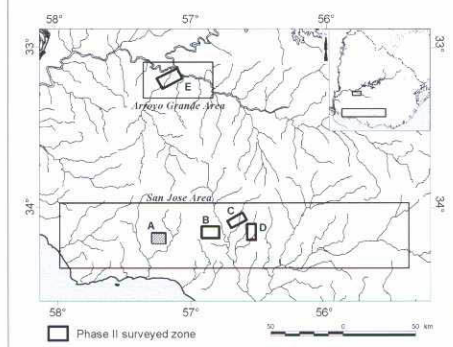
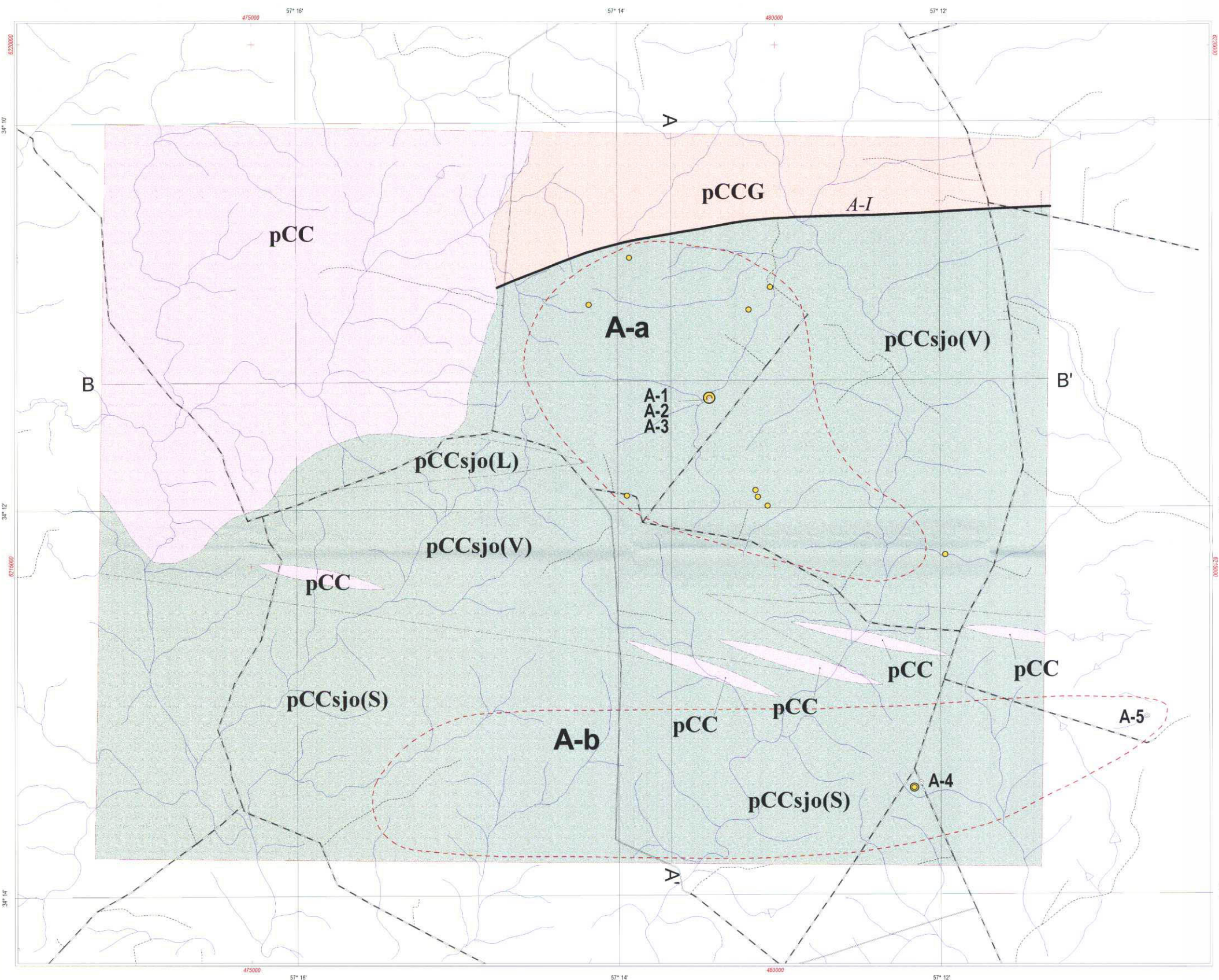


REPORT ON THE MINERAL EXPLORATION
IN
THE SAN JOSE AND ARROYO GRANDE AREA
THE ORIENTAL REPUBLIC OF URUGUAY
PHASE II

Geological Map of the Zone A of the San Jose Area



JAPAN INTERNATIONAL COOPERATION AGENCY
METAL MINING AGENCY OF JAPAN
MARCH, 2002



LEGEND

Geology

- Quaternary: Q (Gravel, sand, clay)
- Tertiary: Tr (Sandstone, conglomerate, mudstone, breccia)
- Cretaceous: KSa (Silicified rock, fine sandstone)
- Greenstone:
 - pCCag (Mica schist, quartz schist, gneiss, slate, phyllite, green schist, metabasalt, metarhyolite, amphibolite)
 - pCCps (Mica schist, quartz schist, slate, phyllite, green schist, metabasalt, metarhyolite, metagabbro, amphibolite)
 - pCCsjo (Mica schist, quartz schist, gneiss, quartzite, slate, phyllite, green schist, metabasalt, metarhyolite, metagabbro, amphibolite)
- Basement complex: pCCcb (Schist, gneiss, hornfels, quartzite, granitic rock, migmatite)
- Granite intrusive rock (Transamazonian and Pre-Transamazonian): pCC (Granite, granodiorite, diorite, tonalite, aplite)
- Granite intrusive rock (Pre-Transamazonian): pCCG (Granite, granodiorite, diorite, quartz diorite)

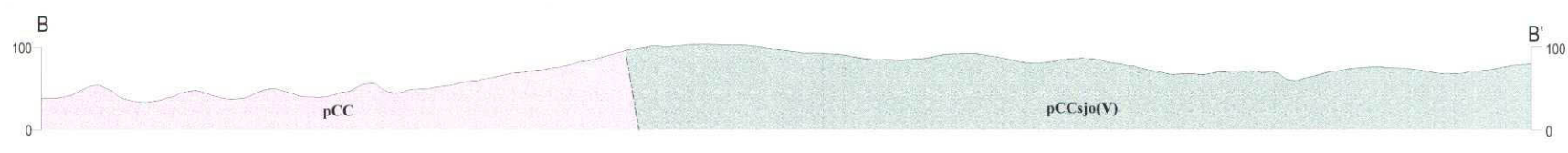
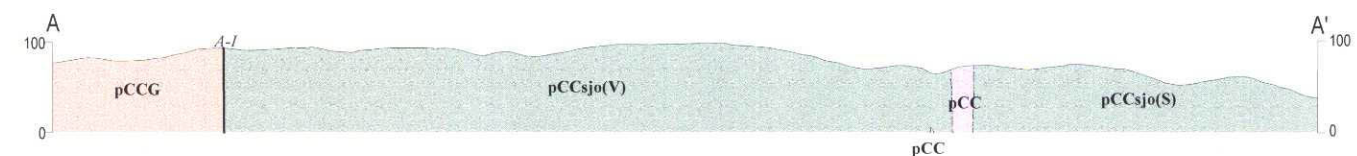
Dyke

- dl (Dolerite)
- gb (Gabbro)
- A-I (Fault and fault name)
- - - (Inferred fault)

Quartz Au(ppm)

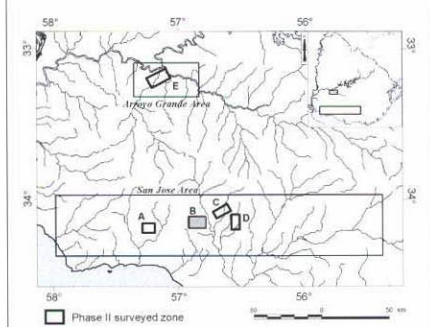
- Yellow circle: 5.0 ≤
- Orange circle: 0.5 - 5.0
- Red circle: 0.05 - 0.5

- A-a (Mineral showing zone)
- A-1 (Sketch location)
- Survey zone (dashed line)
- Stream (wavy line)
- Road (double line)

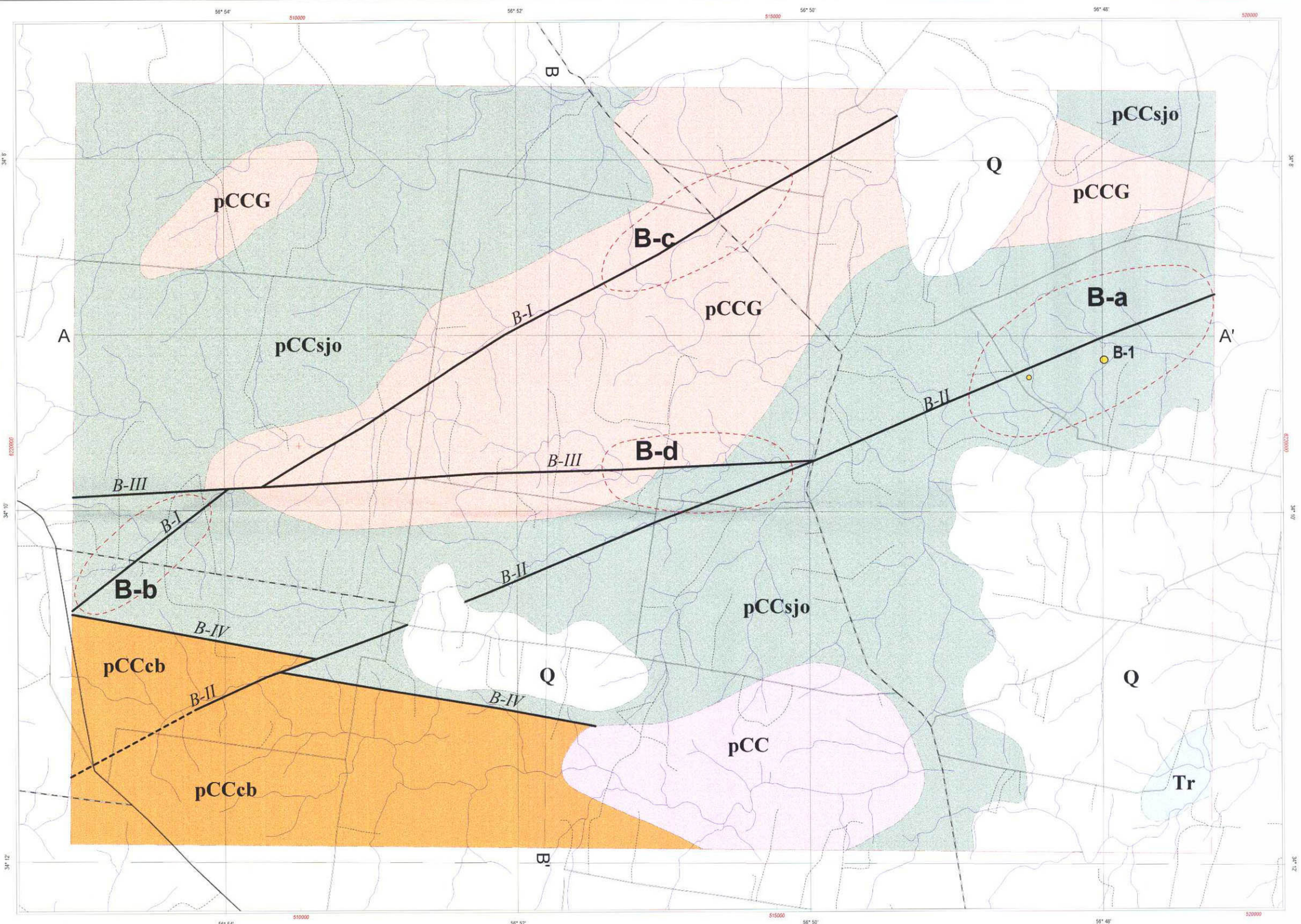


REPORT ON THE MINERAL EXPLORATION
IN
THE SAN JOSE AND ARROYO GRANDE AREA
THE ORIENTAL REPUBLIC OF URUGUAY
PHASE II

Geological Map of the Zone B of the San Jose Area



JAPAN INTERNATIONAL COOPERATION AGENCY
METAL MINING AGENCY OF JAPAN
MARCH, 2002



LEGEND

Geology

- Quaternary**
 - Q: Gravel, sand, clay
- Tertiary**
 - Tr: Sandstone, conglomerate, mudstone, breccia
- Cretaceous**
 - KSa: Silicified rock, fine sandstone
- Greenstone**
 - Arroyo Grande Formation: pCCag: Mica schist, quartz schist, gneiss, slate, phyllite, green schist, metabasalt, metarhyolite, amphibolite
 - Paso Severino Formation: pCCps: Mica schist, quartz schist, slate, phyllite, green schist, metabasalt, metarhyolite, metagabbro, amphibolite
 - San Jose Formation: pCCsjo: Mica schist, quartz schist, gneiss, quartzite, slate, phyllite, green schist, metabasalt, metarhyolite, metagabbro, amphibolite
- Basement complex**
 - pCCcb: Schist, gneiss, hornfels, quartzite, granitic rock, migmatite
 - pCC: Granite, granodiorite, diorite, tonalite, apatite
 - pCCG: Granite, granodiorite, diorite, quartz diorite
- Dyke**
 - dd: Dolerite
 - gb: Gabbro

Limited to Zone A
pCCsjo(V): metavolcanic rock (basalt)
pCCsjo(S): metasedimentary rock
pCCsjo(L): limestone

Quartz Au(ppm)

- 5.0 ≤
- 0.5 - 5.0
- 0.05 - 0.5

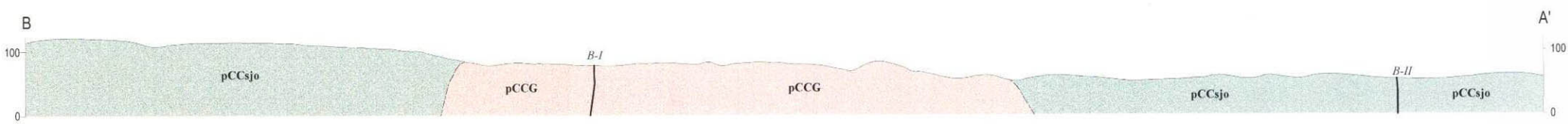
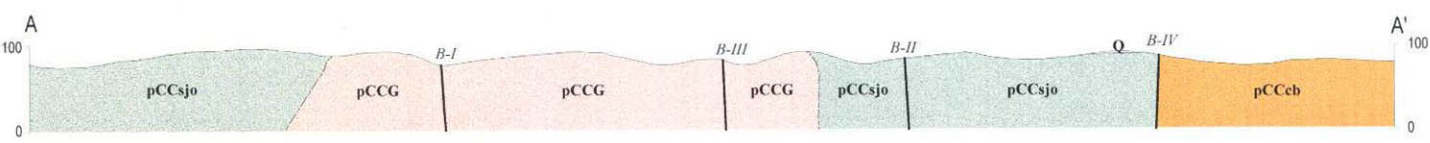
(A-a) Mineral showing zone

A-1 Sketch location

Survey zone

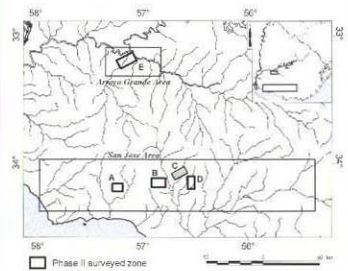
Stream

Road

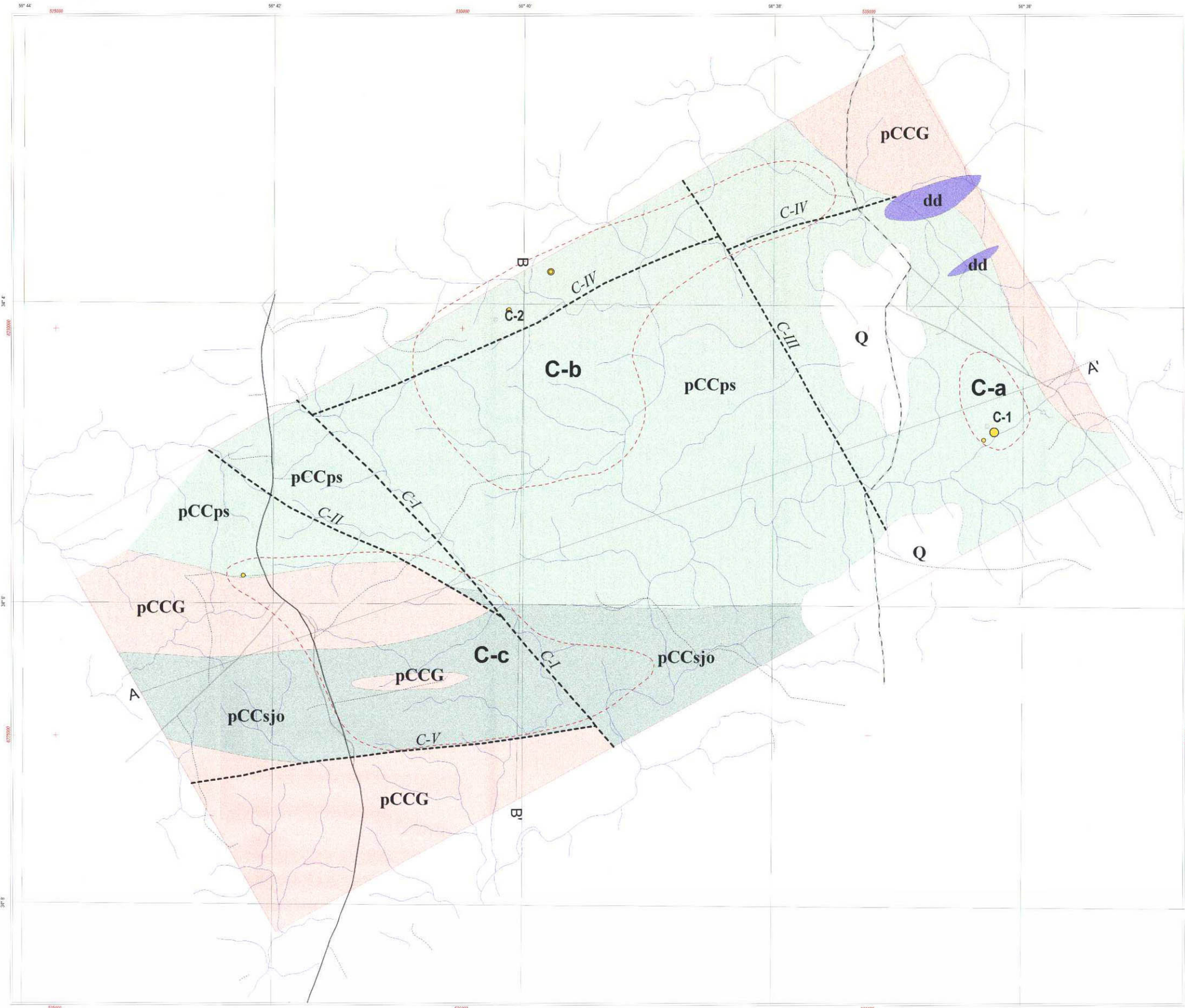


REPORT ON THE MINERAL EXPLORATION
IN
THE SAN JOSE AND ARROYO GRANDE AREA
THE ORIENTAL REPUBLIC OF URUGUAY
PHASE II

Geological Map of the Zone C of the San Jose Area

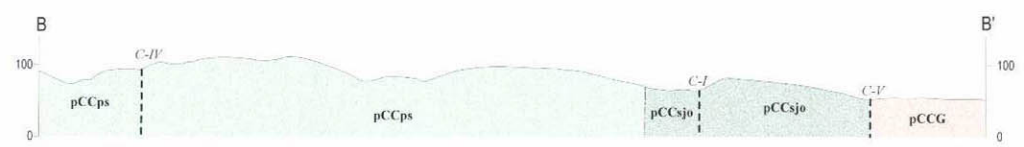
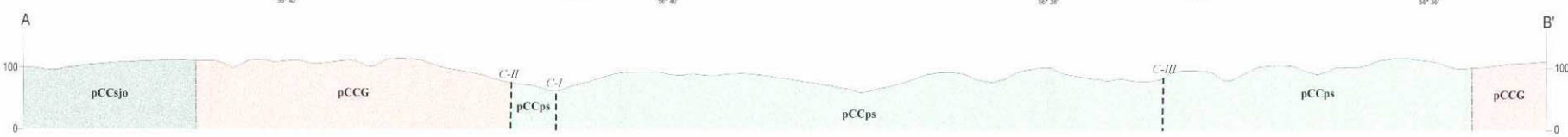


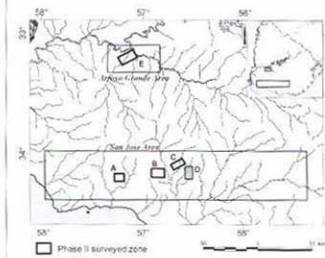
JAPAN INTERNATIONAL COOPERATION AGENCY
METAL MINING AGENCY OF JAPAN
MARCH, 2002



LEGEND

- Geology**
- Quaternary
 - Q Gravel, sand, clay
 - Tertiary
 - Tr Sandstone, conglomerate, mudstone, breccia
 - Cretaceous
 - KSa Silicified rock, fine sandstone
 - Greenstone
 - Arroyo Grande Formation
 - pCCag Meta schist, quartz schist, gneiss, slate, phyllite, green schist, metabasalt, metabasite, metagabbro, amphibolite
 - Pizzo Severino Formation
 - pCCps Meta schist, quartz schist, slate, phyllite, green schist, metabasalt, metabasite, metagabbro, amphibolite
 - San Jose Formation
 - pCCsjo Meta schist, quartz schist, gneiss, quartzite, slate, phyllite, green schist, metabasalt, metabasite, metagabbro, amphibolite
 - Basement complex
 - pCCcb Schist, gneiss, hornfels, quartzite, granitic rock, migmatite
 - Granite intrusive rock (Transamazonian and Pre-Transamazonian)
 - pCC Granite, granodiorite, diorite, tonalite, gabbro
 - Granite intrusive rock (Pre-Transamazonian)
 - pCCG Granite, granodiorite, diorite, quartz diorite
 - Dyke
 - dd Diorite
 - gb Gabro
- Fault and fault name
 Inferred fault
- Quartz Au(ppm)
 5.0 ≤
 0.5 - 5.0
 0.05 - 0.5
- A-a Mineral showing zone
 A-1 Sketch location
 Survey zone
 Stream
 Road





JAPAN INTERNATIONAL COOPERATION AGENCY
METAL MINING AGENCY OF JAPAN
MARCH, 2002

Scale: 1:50,000

LEGEND

Geology

Quaternary
Q Gravel, sand, clay

Tertiary
Tr Sandstone, conglomerate, mudstone, breccia

Cretaceous
KsS Siltified rock, fine sandstone

Greenstone
Arroyo Grande Formation
pCCag Meta schist, quartz schist, gneiss, slate, phyllite, quartzite, metabasalt, metachert, amphibolite

Pago Severino Formation
pCCps Meta schist, quartz schist, slate, phyllite, green schist, metabasalt, metachert, amphibolite, metabasite, amphibolite

San Jose Formation
pCCsjo Meta schist, quartz schist, gneiss, quartzite, slate, phyllite, green schist, metabasalt, metachert, amphibolite, metabasite, amphibolite

Basement complex
pCCcb Schist, gneiss, hornfels, quartzite, granitic rock, migmatite

Granite intrusive rock (Transamazonian and Pre-Transamazonian)
pCC Granite, granodiorite, diorite, tonalite, gabbro

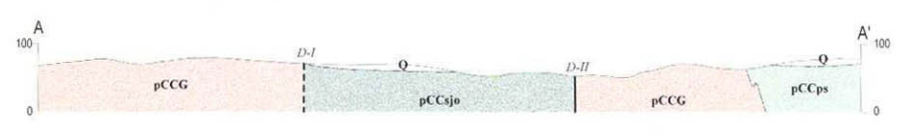
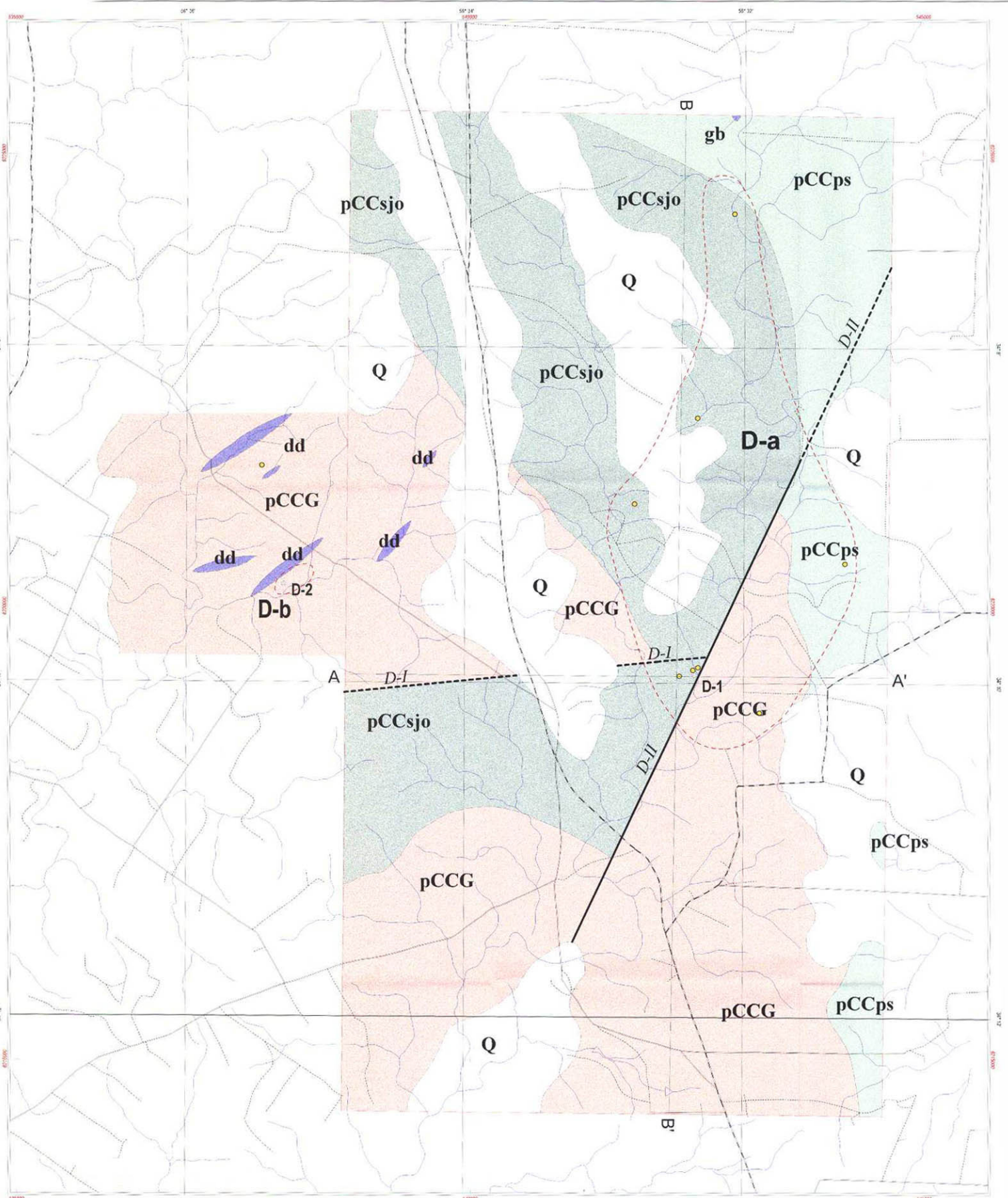
Granite intrusive rock (Pre-Transamazonian)
pCCG Granite, granodiorite, diorite, quartz diorite

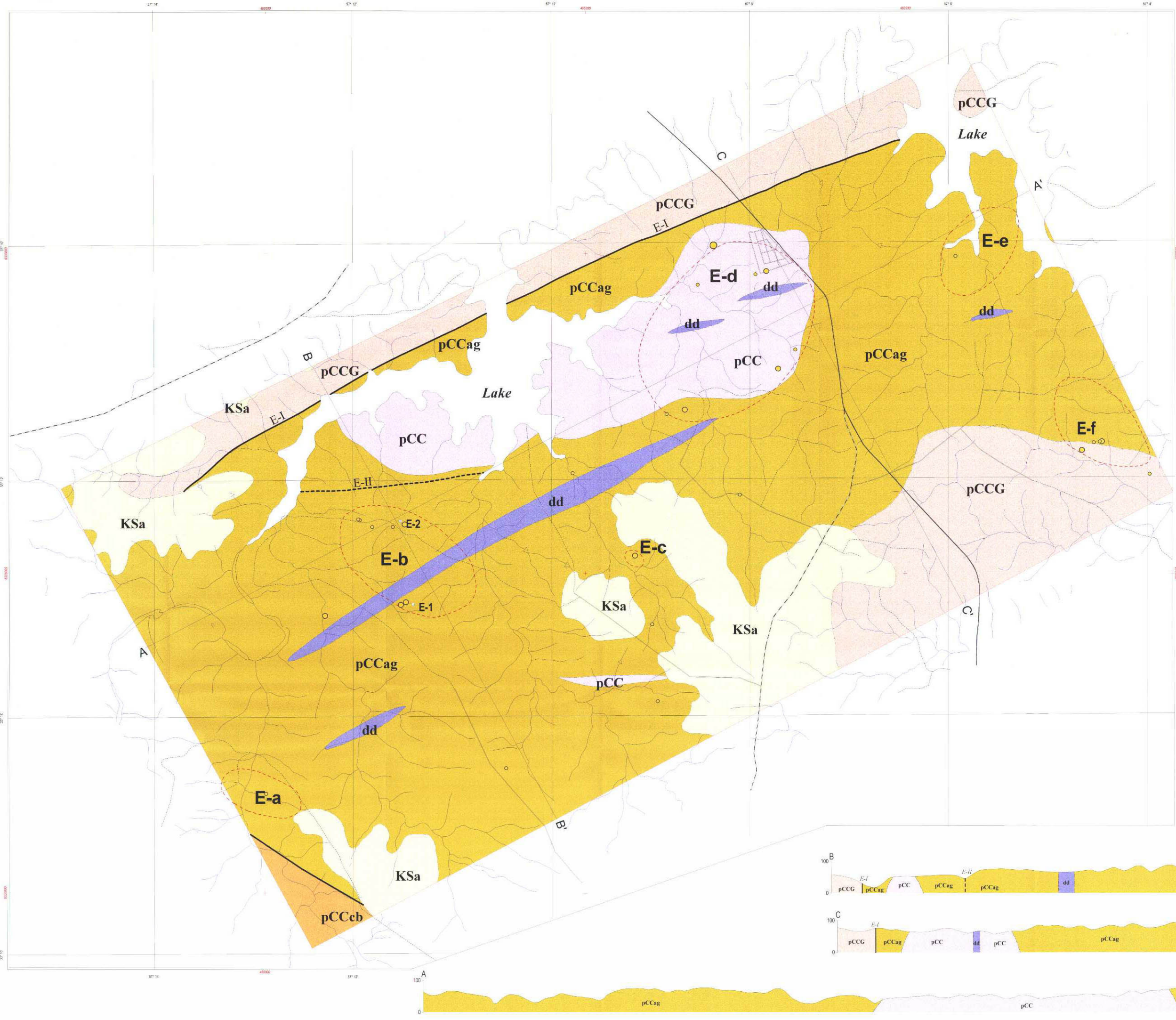
Dyke
dd Diorite
gb Gabbro

Fault and fault name
Fault and fault name
Inferred fault

Quartz Au (ppm)
5.0 ≤
0.5 - 5.0
0.05 - 0.5

Mineral showing zone
Sketch location
Survey zone
Stream
Road





LEGEND

Geology

Quaternary
 Q Gravel, sand, clay

Tertiary
 T₁ Sandstone, conglomerate, tuffaceous, breccia

Cretaceous
 KSa Silted rock, fine sandstone

Greenstone
 pCCag Micro schist, quartz schist, gneiss, slate, phyllite, green schist, metabasite, metapsyllite, amphibolite

Arroyo Grande Formation
 pCCps Micro schist, quartz schist, slate, phyllite, green schist, metabasite, metapsyllite, metagabbro, amphibolite

Figueroa Formation
 pCCsj Micro schist, quartz schist, gneiss, quartzite, slate, phyllite, green schist, metabasite, metapsyllite, metagabbro, amphibolite

San Jose Formation
 pCCG Granite, gneiss, diorite, tonalite, aplite

Basement complex
 pCCcb Schist, gneiss, hornfels, quartzite, gneiss, mica, migmatite

Granite intrusive rock (Transamazonian and Pre-Transamazonian)
 pCC Granite, granodiorite, diorite, tonalite, aplite

Granite intrusive rock (Pre-Transamazonian)
 pCCG Granite, gneiss, diorite, tonalite, aplite

Dyke
 dd Diorite
 gb Gabbro

Fault and fault name
 Inferred fault

Quartz Au (ppm)
 5.0 ≤
 0.5 - 5.0
 0.05 - 0.5

A-A' Mineral showing zone
 A-1 Sketch location

Survey zone
 Stream
 Road

