

Fig. II-4-5 TMI reduced to the pole in the zones of the geological survey

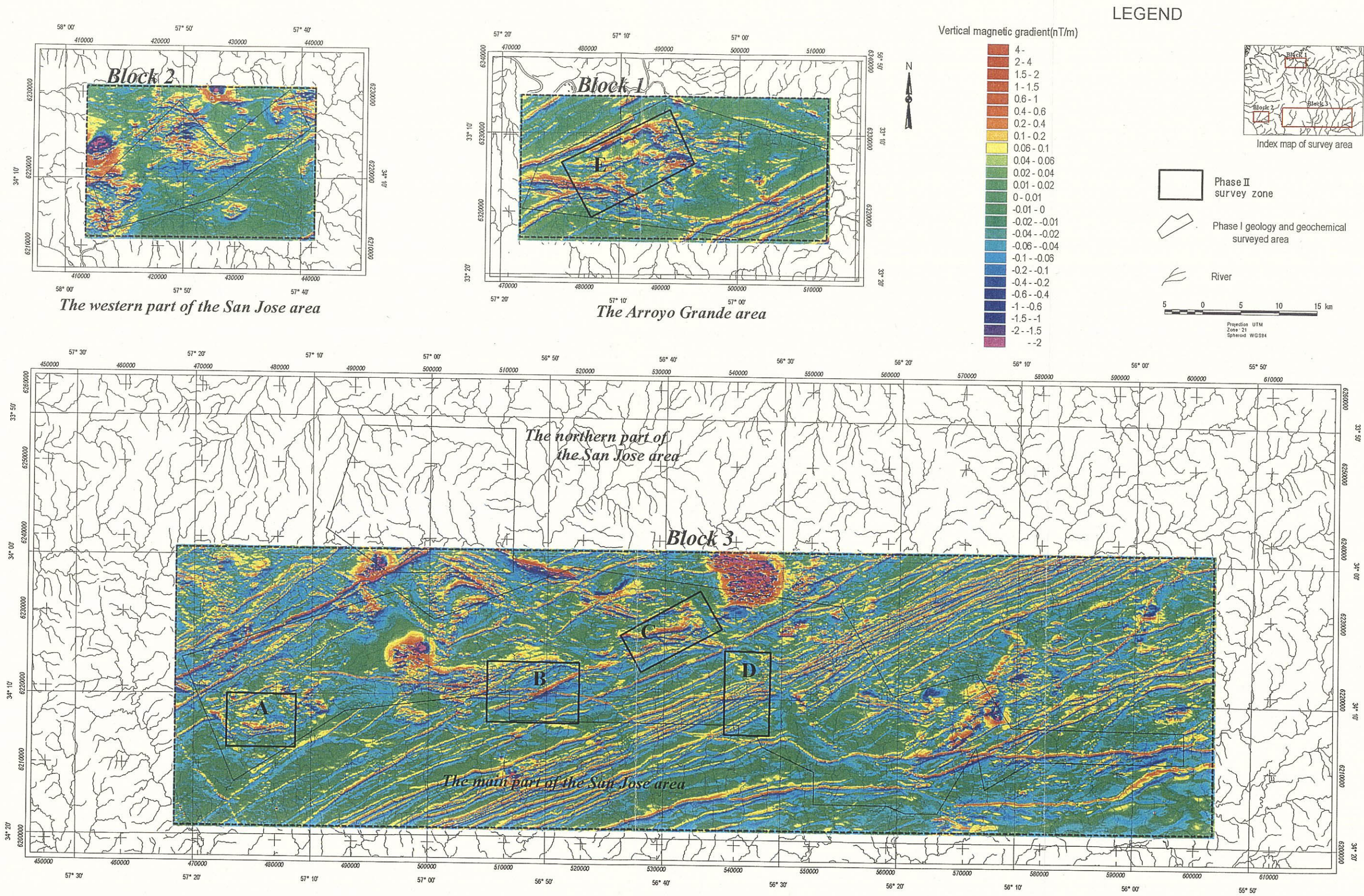


Fig. II-4-6 Magnetic vertical gradient of the survey area

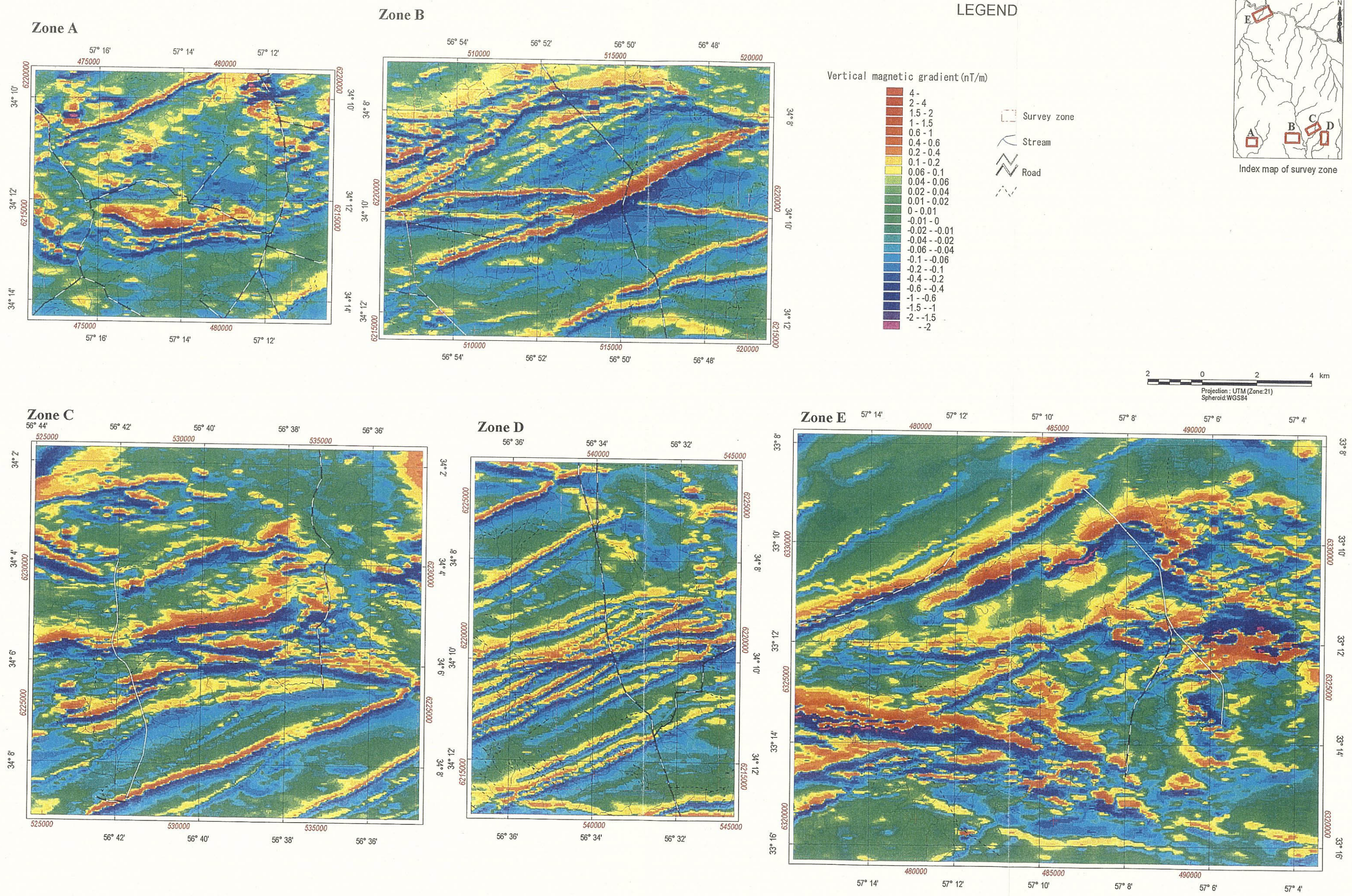


Fig. II-4-7 Magnetic vertical gradient in the zones of the geological survey

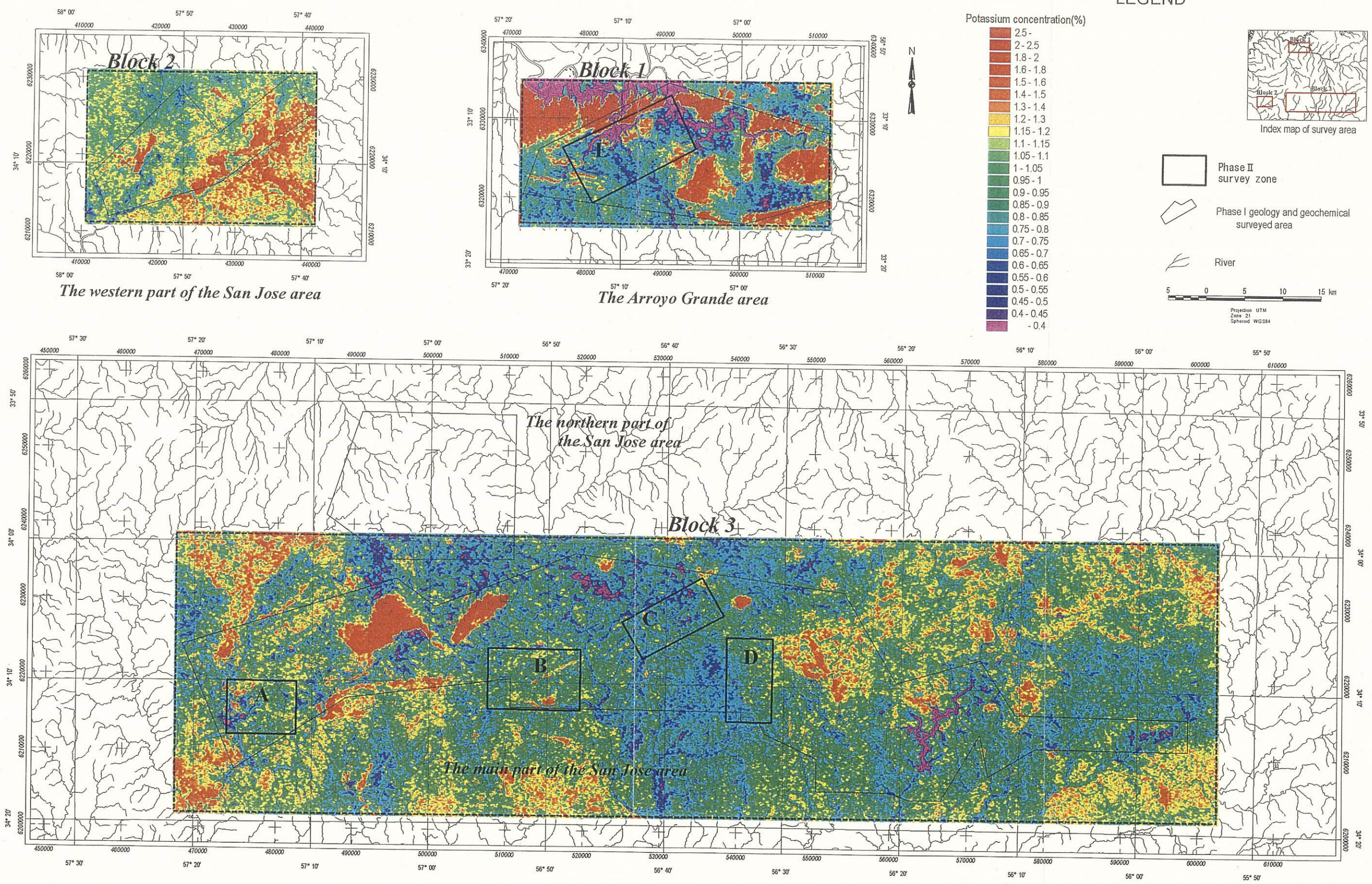


Fig. II-4-8 Airborne radiometric map of Potassium

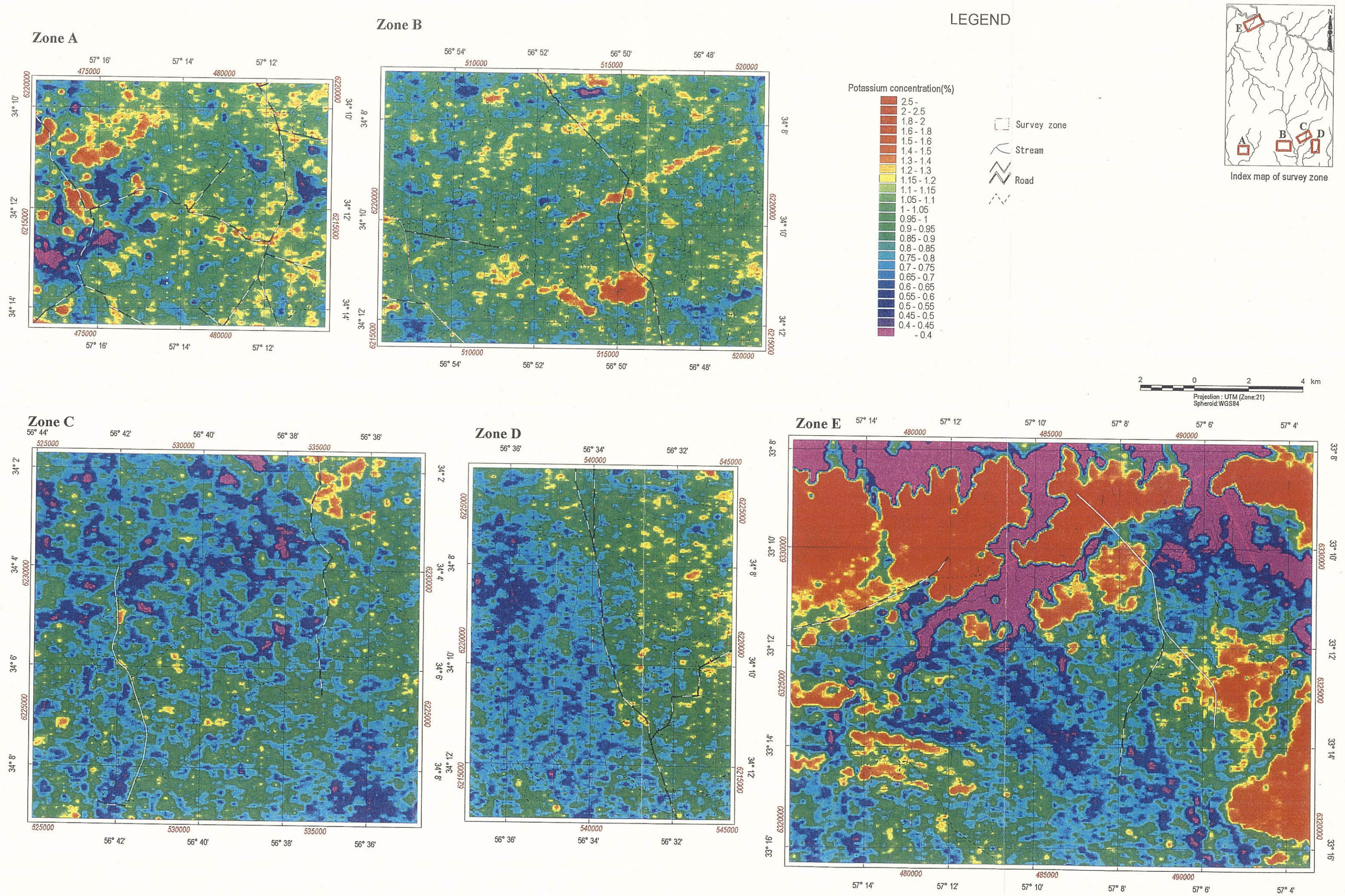


Fig. II-4-9 Airborne radiometric map of Potassium in the zones of the geological survey