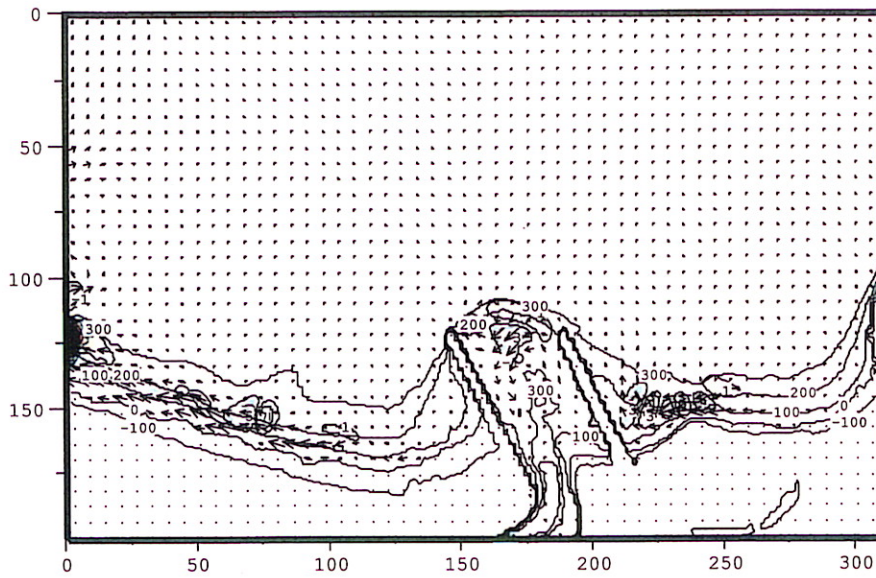
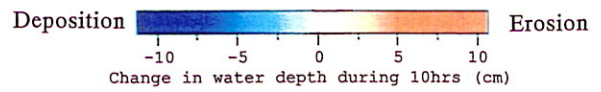


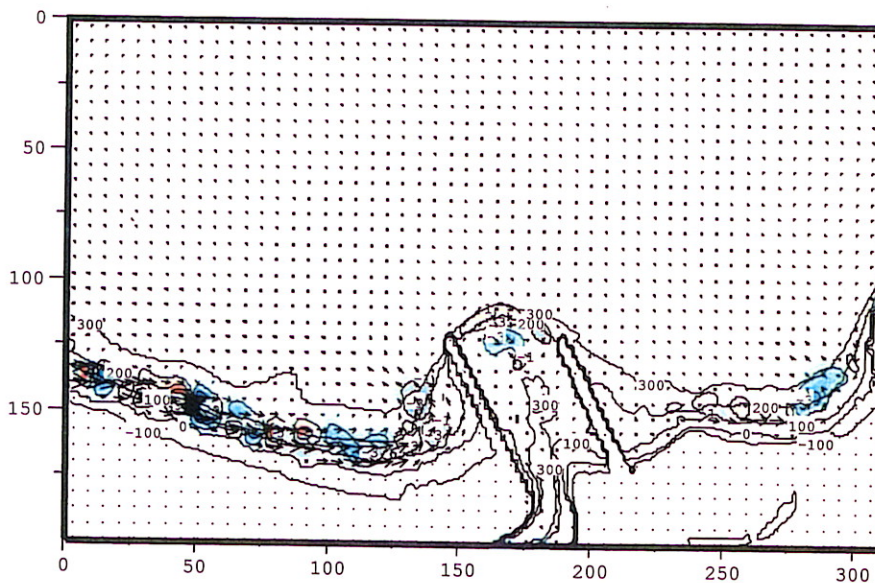
a) Wind Direction from ENE+ 30°



→ : 177 cm/sec



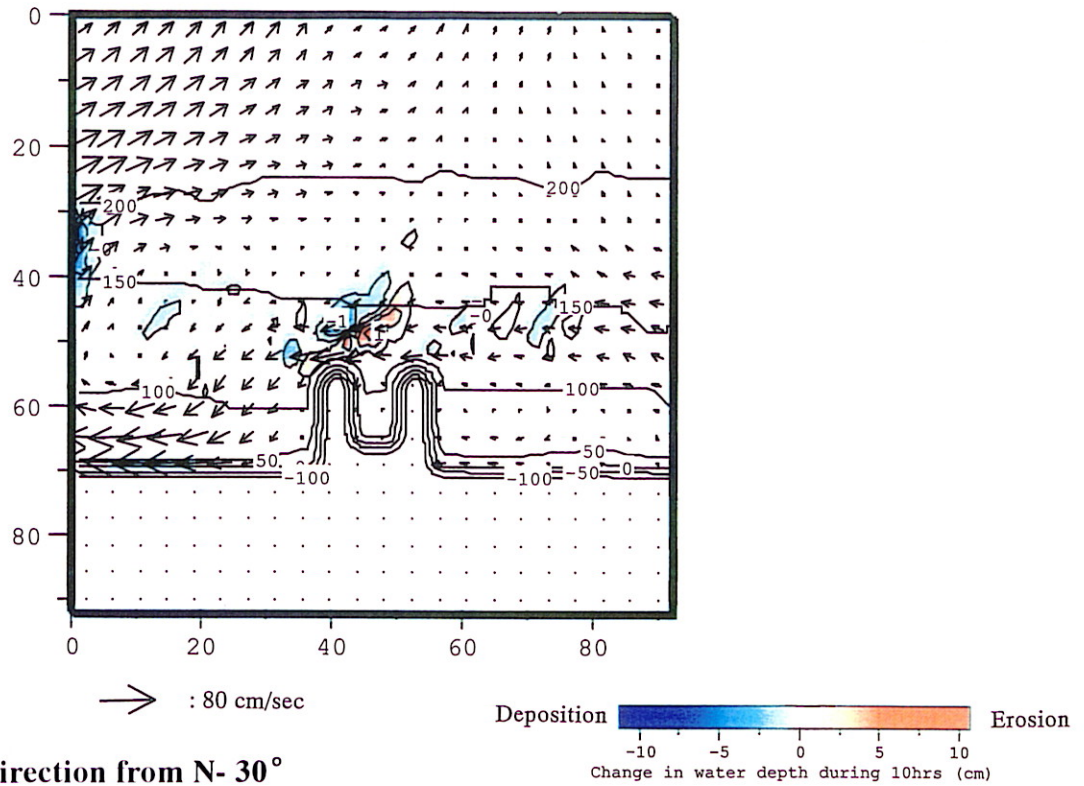
b) Wind Direction from ENE- 30°



→ : 332 cm/sec

Figure 8.2.3-6 Current Pattern and Topographic Change in Sichon Area
(Future Case)

a) Wind Direction from N+ 30°



b) Wind Direction from N- 30°

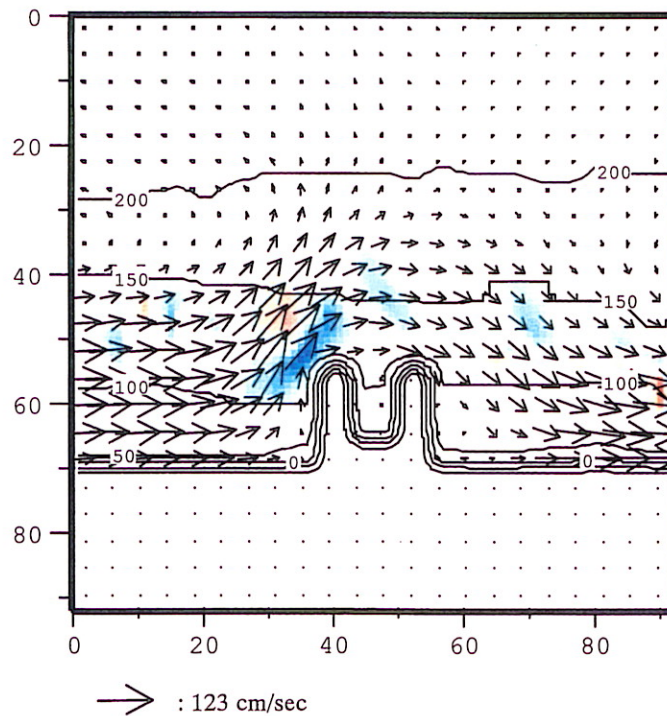


Figure 8.2.3-7 Current Pattern and Topographic Change in Bang Ra Pha Area
(Present Case)