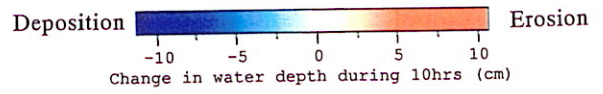
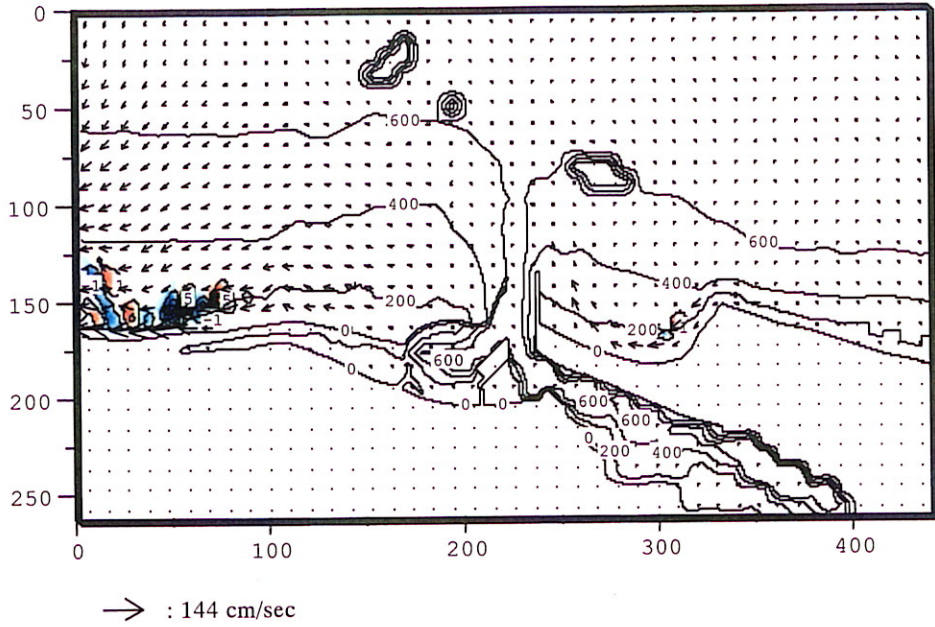


a) Wind Direction from NE+ 30°



b) Wind Direction from NE- 30°

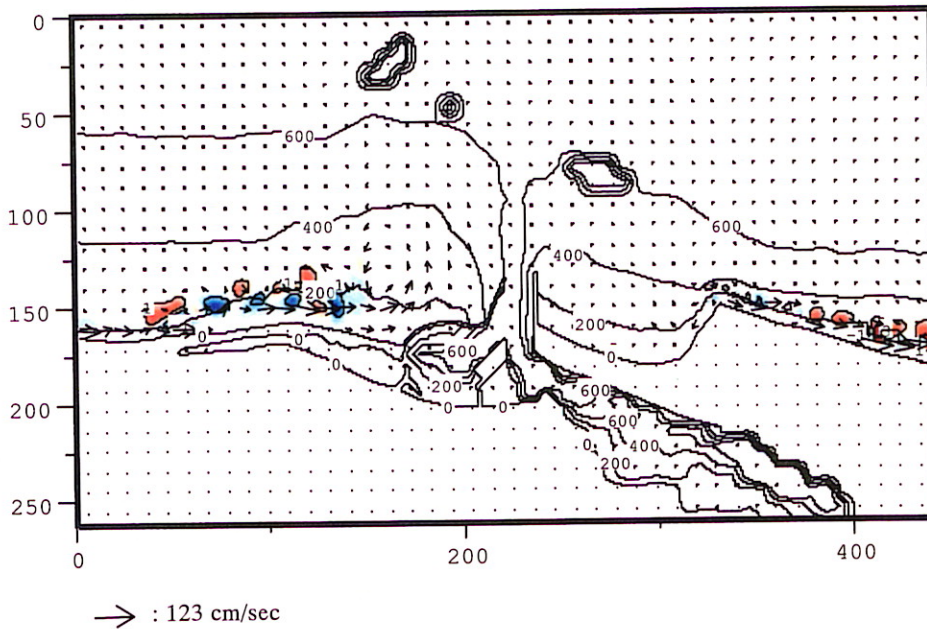
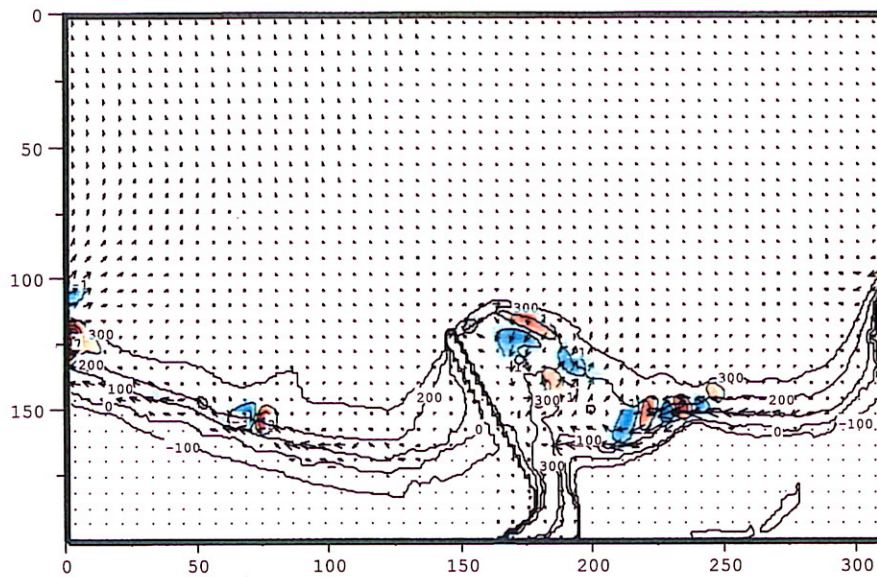
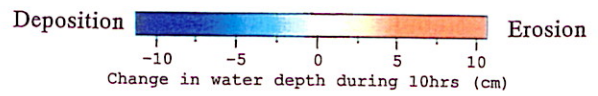


Figure 8.2.3-4 Current Pattern and Topographic Change in Songkhla Area (Future Case)

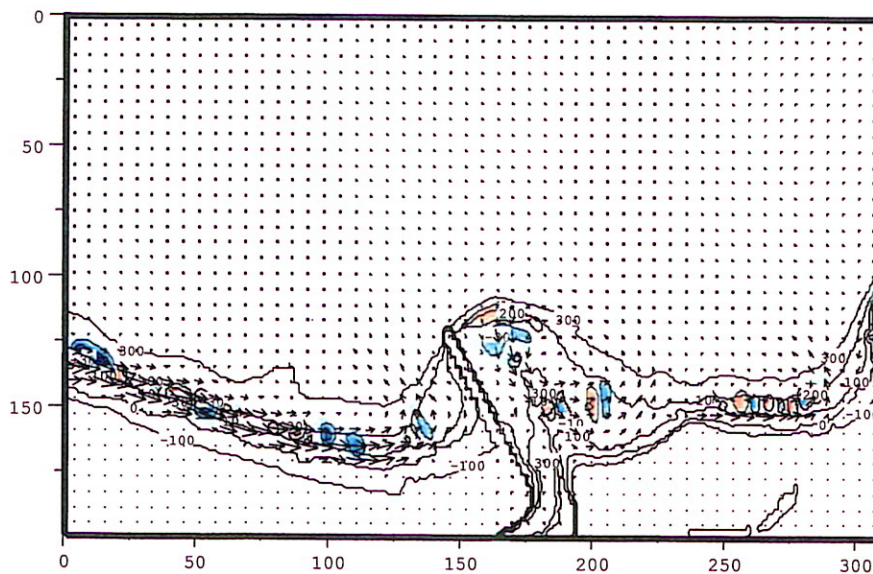
a) Wind Direction from ENE+ 30°



→ : 175 cm/sec



b) Wind Direction from ENE- 30°



→ : 281 cm/sec

Figure 8.2.3-5 Current Pattern and Topographic Change in Sichon Area
 (Present Case)