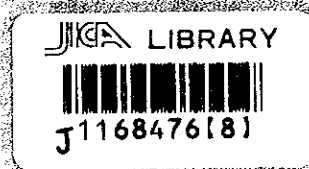


Final Report

VOL.2 MASTER PLAN

**The Study on the
Cebu Integrated
Port Development Plan
in the Republic
of the Philippines**

March 2002



The Overseas Coastal Area Development Institute of Japan (OCDI)
Pacific Consultants International (PCI)

SSF
J R
02-21

VOL.2 MASTER PLAN

March 2002



Exchange Rate
1 US Dollar = 52.5 Pesos = 125 Yen
(As of June 2001)

Japan International Cooperation Agency (JICA)
Cebu Port Authority (CPA)

Final Report

VOL.2 MASTER PLAN

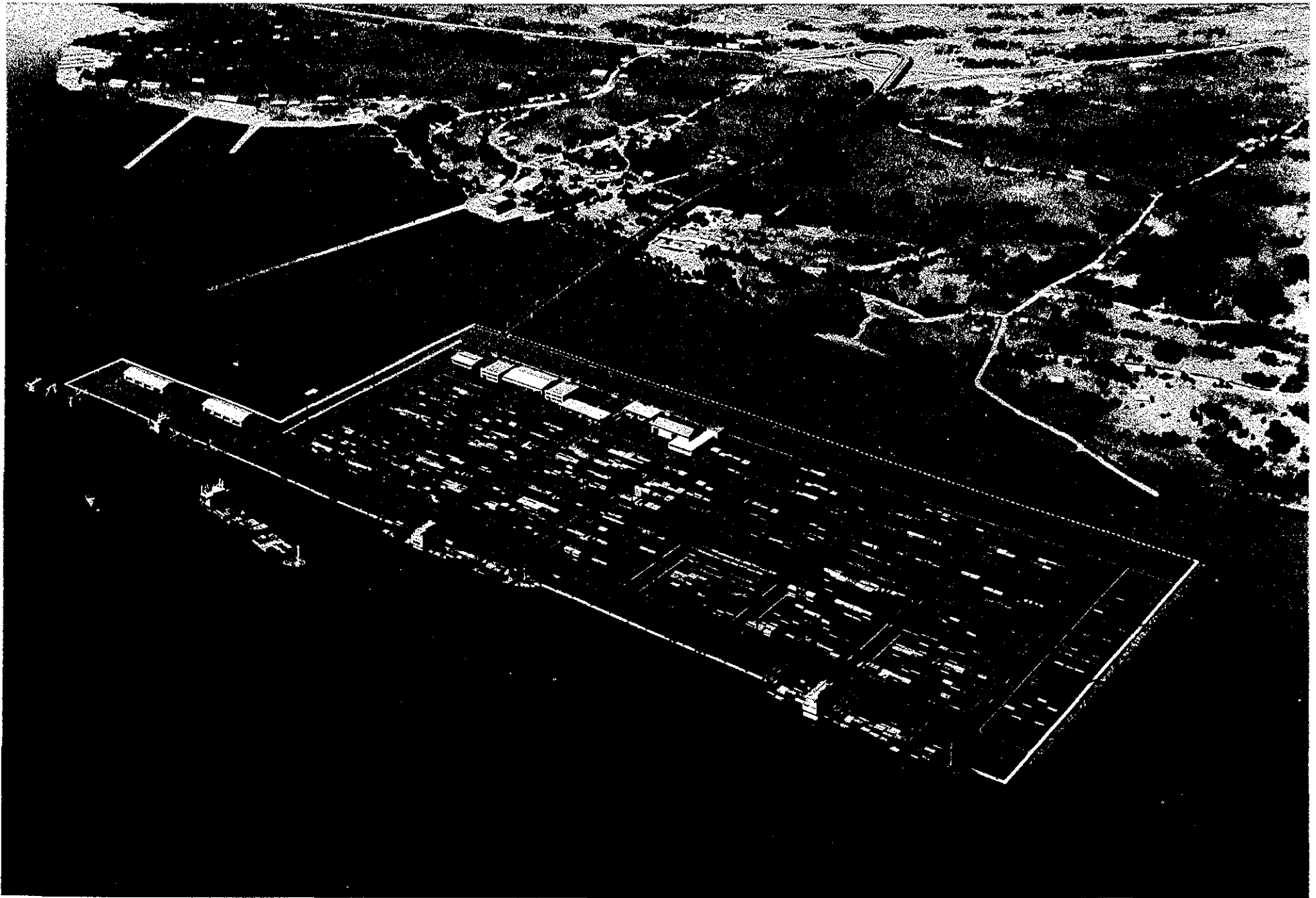
**The Study on the
Cebu Integrated
Port Development Plan
in the Republic
of the Philippines**

March 2002

The Overseas Coastal Area Development Institute of Japan (OCDI)
Pacific Consultants International (PCI)



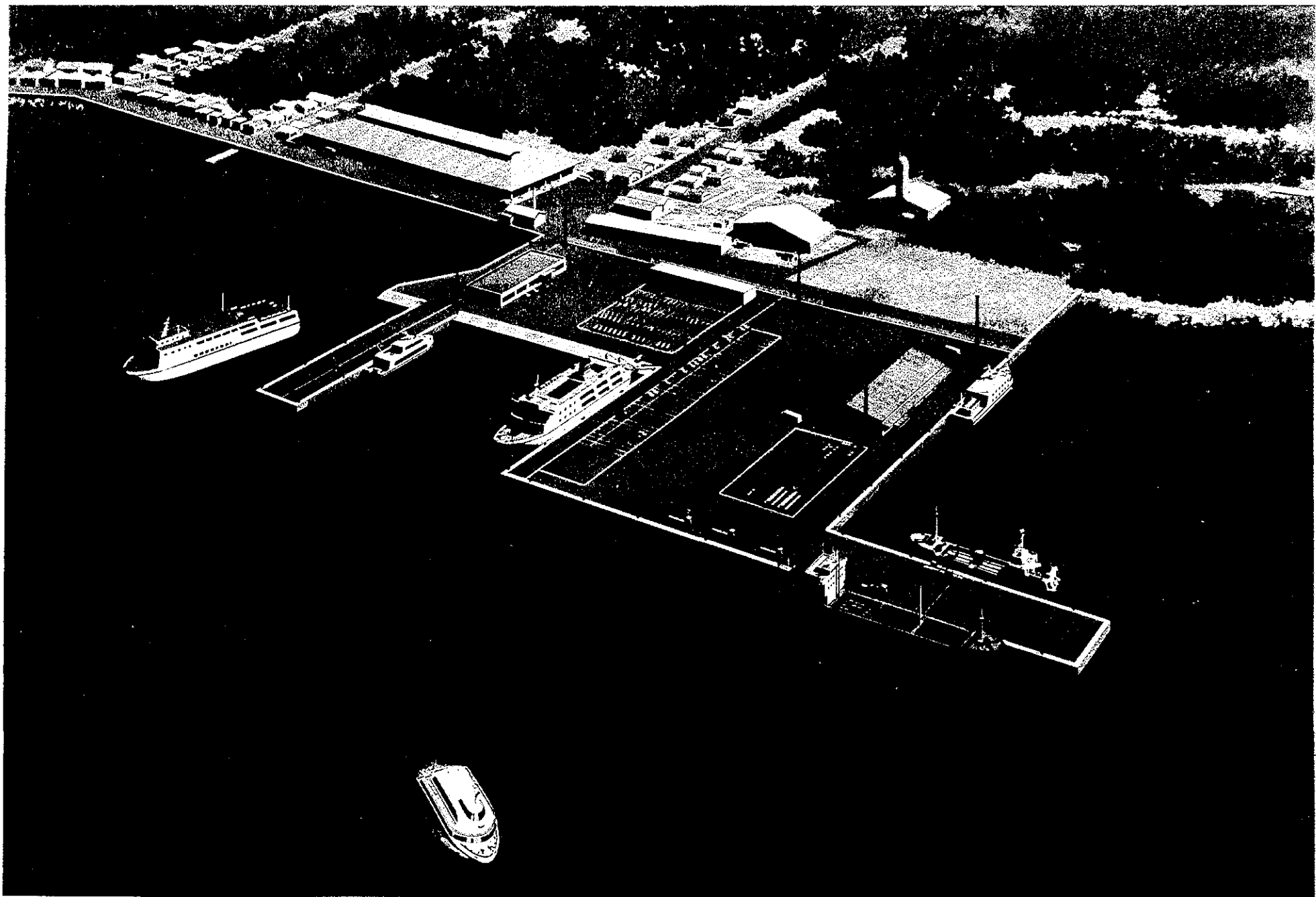
1168476【8】



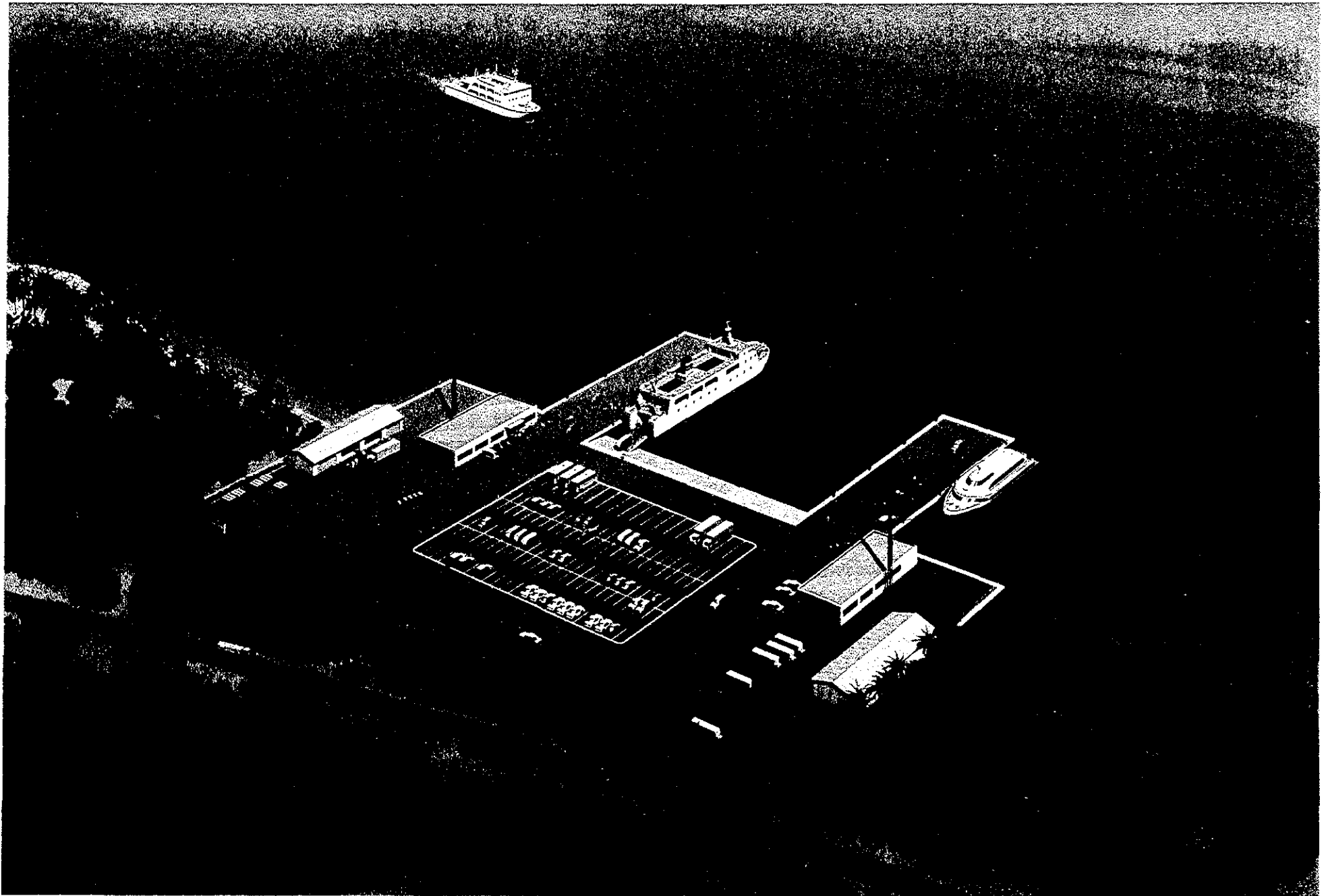
New Cebu Port (2020)



Cebu Baseport (2020)



Toledo Port (2020)



New San Remigio Port (2020)

LIST OF ABBREVIATIONS

A	AADT	: Average Annual Daily Traffic
	AAGR	: Average Annual Growth Rate
	A&D	: Alienable and Disposable
	ADB	: Asian Development Bank
	AFC	: Atlas Fertilizer Corporation
	AIP	: Air-mans Information Publication
	ARMM	: Autonomous Region of Muslim Mindanao
	ASEAN	: Association of South East Asian Nations
ATI	: Asian Terminal Incorporated	
B	B	: Berth
	B/C	: Cost Benefit Ratio
	BFAR	: Bureau of Fisheries and Aquatic Resources
	BOD	: Biochemical Oxygen Demand
	BOO	: Build, Operate and Own
	BOR	: Berth Occupancy Ratio
	BOT	: Build, Operate and Transfer
	BOC	: Bureau of Customs
C	CAR	: Cordillera Administrative Region
	CARP	: Comprehensive Agrarian Reform Program
	CASSCOR	: Cebu Arrastre & Stevedoring Service Corporation
	CBD	: Commercial Business District
	CCWP	: Cebu City Waterfront Development Project
	CDC	: Construction Development Corporation of the Philippines
	CDO	: Cagayan de Oro
	CDS	: City Development Strategy
	CENRO	: Community Environmental and Natural Resources Office
	CFS	: Container Freight Station
	CIADMPS	: Cebu Integrated Area Development Master Plan
	CIP	: Cebu International Port
	CIPDI	: Cebu Industrial Park Developers, Inc.
	CLIP	: Cebu Light Industrial Park
	CLUP	: Comprehensive Land Use Plan
	COD	: Chemical Oxygen Demand
	CPA	: Cebu Port Authority
	CRC	: Cargo Release Control
	CVMTPD	: Cebu Visayas Medium-Term Development
	CVWSP	: Central Visayas Water and Sanitation Project

D	D	: Depth
	DA	: Department of Agriculture
	DAO	: DENR Administrative Order
	DENR	: Department of Environment and National Resources
	DO	: Dissolved Oxygen
	DOTC	: Department of Transportation and Communication
	DTI	: Department of Trade and Industry
	DPWH	: Department of Public Works and Highways
	DR	: Delivery Record
	DW	: Department Weight
	DWT	: Deadweight Tonnage
E	EDI	: Electrical Data Interchange
	ECC	: Environmental Compliance Certificate
	ECP	: Environmental Critical Projects
	EGR	: Employment Annual Growth Rate
	EIA	: Environmental Impact Assessment
	EIP	: Environmental Impact Statement System
	EIRR	: Economic Internal Rate of Return
	EIS	: Environmental Impact Study
	EMaP	: Environmental Management Plan
	EMoP	: Environmental Monitoring Plan
	EMB	: Environmental Management Bureau
	EPZ	: Export Processing Zone
	ETA	: Estimated Time of Arrival
	ETD	: Estimated Time of Departure
F	FIRR	: Financial Internal Rate of Return
	FOB	: Free On Board
	FSDC	: Farm System Development Corporation
G	GDP	: Gross Domestic Product
	GLC	: Ground Level Concentration
	GNP	: Gross National Product
	GOP	: Government of the Philippines
	GPS	: Global Positioning System
	GRDP	: Gross Regional Domestic Product
	GRT	: Gross Tonnage
H	hpa	: hectopascal

	HTCI	: Herminio Teves Company
	HWL	: High Water Level
I	IBRD	: International Bank for Reconstruction and Development
	IEE	: Initial Environmental Examination
	IFM	: Inward Foreign Manifest
	ICAO	: International Civil Aviation Organization
	IMO	: International Maritime Organization
	IPHO	: Integrated Provincial Health
J	JBIC	: Japan Bank for International Cooperation
	JICA	: Japan International Cooperation Agency
K	KVA	: Kilo Volt Ampere
L	LCT	: Loading Craft Transport
	LCL	: Less Than Container Load
	LDP	: Local Development Plan
	LGU	: Local Government Unit
	LLC	: Level Lifting Cranes
	LLW	: Lowest Low Water Level
	LOA	: Length of Overall
	LTO	: Land Transportation Office
	LUWA	: Local Unit Water Authority
	LW	: Low Water
	LWL	: Low Water Level
M	MCCU	: Monitoring Cargo Control Unit
	MCDP	: Mactan Cebu Development Project
	MCDPO	: Mactan Cebu Development Project Office
	MCIA	: Mactan Cebu International Airport
	MCIAA	: Mactan Cebu International Airport Authority
	MCWWD	: Metro Cebu Water Works Department
	MECASSI	: Metro Cebu Arrastre & Stevedoring Service
	MEZ	: Mactan Economic Zone
	MICT	: Mindanao International Container Terminal
	MICT	: Manila International Container Terminal
	MLLW	: Mean Lower Low Water
	MRT	: Mass Rail Transit
	MSL	: Mean Sea-Water Level
	MT	: Metric Ton

	MTPDP	: Medium-Term Philippine Development Plan
	MTS	: Mass Transit System
N	NAMRIA	: National Mapping Resource Information Authority
	NCR	: National Capital Region
	NCTO	: New Cebu Township One
	NEDA	: National Economic and Development Authority
	NEPC	: National Environmental Protection Council
	NIA	: National Irrigation Administration
	NOPEMCO	: The Negros Oriental Provincial Employees Multi-Purpose Cooperative
	Nox	: Nitrogen Oxides
	NPC	: National Power Corporation
	NSCB	: National Statistical Coordination Board
	NSO	: National Statistics Office
	NVOCC	: Non Vessel Operate Common Carrier
O	ODA	: Official Development Assistance
	OECD	: Organization for Economic Cooperation and Development
	OECF	: Overseas Economic Cooperation Fund (Currently JBIC)
	O-D	: Origin and Destination
	OFM	: Outward Foreign Manifest
	OPASCOR	: Oriental Port & Allied Service Corporation
P	PACD	: Presidential Arm on Community Development
	PAGASA	: Philippine Atmospheric, Geophysical and Astronomical Services Administration
	PC	: Prestressed Concrete
	P/C	: Passenger Cargo
	PCI	: Pacific Consultants International
	PCO	: Pollution Control Officer
	PCU	: Passenger Car Unit
	PD	: Presidential Decrees
	PENRO	: Provincial Environment and Natural Resources Offices
	PEZA	: Philippine Economic Zone Authority
	PHILVOLCS	: Philippine Institute of Volcanology and Seismology
	Php	: Philippine pesos
	PIC	: Provincial urban/Industrial Center
	PIE	: People's Industrial Estate
	PIE-MO	: PHIVIDEC Industrial Estate-Misamis Oriental
	PMO	: Port Management Office
	POPCEN	: POPulation CENSus
	PPA	: Philippine Ports Authority

Q	QGC	: Quay Gantry Crane
R	R.C.	: Reinforced Concrete
	RDC	: Regional Development Council
	RDP	: Regional Development Plan
	RIC	: Regional Industrial Center
	RORO	: Roll on Roll off
	RPPF	: Regional Physical Framework Plan
	RTGs	: Rubber Tier Mounted Gantry Crane
S	SCF	: Standard Conversion Factor
	SEI(s)	: Significant Environmental Impact(s)
	SEZ	: Special Economic Zone
	SPM	: Suspended Particulate Matter
	SPSP	: Steel Pipe Sheet Pile
	SPT	: Standard Penetration Test
	SS	: Suspended Solid
	SWIP	: Small Water Impounding Project
T	TEU	: Twenty-foot Equipment Unit
	THI	: Tsuneishi Heavy Industry
	TPC	: Toledo Power Company
	TSMC	: Tolong Sugar Mill Company
U	URSUMCO	: Universal Robina Sugar Milling Corporation
	USDI	: United South Dock-Handlers Inc,
V	VAT	: Value Added Tax
	VECO	: Visayas Electric Cooperation
	VTMS	: Vessel Traffic Management System
W	WCIP	: West Cebu Industrial Park

Contents

Volume 2

1. Introduction	1-1
2. Master Plan	2-1
2.1 Natural Condition at the New Cebu Port	2-1
2.1.1 Current	2-1
2.1.2 Bathymetry	2-9
2.1.3 Topography	2-17
2.2 Natural Environmental Condition in Development Sites	2-21
2.2.1 Water Quality	2-21
2.2.2 Sea Bed Materials	2-30
2.2.3 Terrestrial and Marine Flora and Fauna	2-33
2.2.4 Air Quality and Noise	2-41
2.3 Social Environment Conditions	2-44
2.3.1 Cebu Baseport	2-44
2.3.2 New Port - Barangay Tayud, Municipality of Consolacion	2-56
2.4 Traffic Demands Forecast	2-65
2.4.1 Premise and Methodology of Forecast	2-65
2.4.2 Socioeconomic Frame Work	2-68
2.4.3 Demand Forecast of Cebu Baseport	2-75
2.4.4 Demand Forecast of Toledo Port	2-93
2.4.5 Demand Forecast of the New San Remigio Port	2-98
2.4.6 Forecast of Vessel Size and Vessel Calls of the New Cebu Port and Cebu Baseport	2-104
2.4.7 Forecast of Vessel Size and Number of Vessel Calls at Toledo Port	2-109
2.4.8 Forecast of Vessel Size and Number of Vessel Calls at San Remigio Port	2-111
2.5 Master Plan of Cebu Baseport/the New Cebu Port	2-114
2.5.1 Conceptual Zoning of Cebu Baseport	2-114
2.5.2 Required Facilities	2-115
2.5.3 Required Equipment	2-125
2.5.4 The Basic Development Plans	2-131
2.5.5 Navigation Aids	2-141
2.5.6 Hinterland Road Development for the New Cebu Port	2-148
2.5.7 Restriction of Airspace	2-152
2.6 Master Plan of Toledo Port	2-156
2.6.1 Current Situation of Toledo Port	2-156
2.6.2 Development Policy of Toledo Port	2-159
2.6.3 Required Scale of Facilities	2-159
2.6.4 Alternative Layout Plan	2-162

2.6.5	Road Development Plan in the Hinterland	2-169
2.6.6	Phasing Plan	2-169
2.7	Master Plan of the New San Remigio Port	2-171
2.7.1	Current Situation of existing Hagnaya Port and New Port	2-171
2.7.2	Development Policy of new San Remigio Port	2-172
2.7.3	Required Scale of Facilities	2-172
2.7.4	Alternative Layout Plan	2-174
2.7.5	Development Plans for Roads	2-180
2.7.6	Phasing Plan	2-181
2.8	Engineering Design for Long-term Plan	2-182
2.8.1	Design Criteria	2-182
2.8.2	Preliminary Design	2-187
2.8.3	Preliminary Design Concept of Quay Wall Structure	2-197
2.8.4	Preliminary Design Concept of Access Road Way Structure	2-207
2.9	Preliminary Cost Estimation and Implementation Planning	2-211
2.9.1	Implementation Plan	2-211
2.9.2	Cost Estimation	2-216
2.10	Investment Plans for Long-term Plans	2-226
2.10.1	Private Sector Participation	2-226
2.10.2	Preliminary Investment Plans	2-241
2.11	Basic Strategy for improvement of Port Management and Operation	2-244
2.11.1	Institutional Framework	2-244
2.11.2	Port Management	2-248
2.11.3	Port Operation and Cargo Handling	2-256
2.11.4	Information System	2-260
2.11.5	Marketing and Promotion Strategy	2-265
3.	Evaluation of Long-term Plan	3-1
3.1	Economic Analysis for Long-term Plans	3-1
3.1.1	Framework of the Economic Analysis	3-1
3.1.2	Economic Analysis on the New Cebu Port Project	3-10
3.1.3	Economic Analysis on the Cebu Baseport Project	3-30
3.1.4	Economic Analysis on the Toledo Port Project	3-40
3.1.5	Economic Analysis on the New San Remigio Port Project	3-50
3.2	Financial Analysis	3-60
3.2.1	Methodology	3-60
3.2.2	Prerequisites of Financial Analysis	3-60
3.2.3	Evaluation	3-61
3.3	Initial Environmental Examination(IEE)	3-68
3.3.1	Initial Environmental Examination (IEE) for Natural Environment for the Study	3-68
3.3.2	Initial Environmental Examination (IEE) for Social Environment	3-78

Appendix

List of Tables

Volume 2

Table 2.1.2-1	Basic Control Point for Survey	2-9
Table 2.1.3-1	Basic Control Point	2-17
Table 2.2.1-1	Results of the Sea Water Quality Survey at the Existing Cebu Base Port Area	2-28
Table 2.2.1-2	Results of the Sea Water Quality Survey at the New Cebu Port Area	2-28
Table 2.2.1-3	Results of the Sea Water Quality Survey at the Toledo Port Area	2-29
Table 2.2.1-4	Results of the Sea Water Quality Survey at the New San Remigio Port Area	2-29
Table 2.2.2-1	Results of the Sea Bed (Bottom Sediment) Quality Survey at the Existing Cebu Base Port Area	2-31
Table 2.2.2-2	Results of the Sea Bed (Bottom Sediment) Quality Survey at the New Cebu Port Area	2-31
Table 2.2.2-3	Results of the Sea Bed (Bottom Sediment) Quality Survey at the Toledo Port Area	2-32
Table 2.2.2-4	Results of the Sea Bed (Bottom Sediment) Quality Survey at San Remigio Area	2-32
Table 2.2.3-1	Terrestrial Vegetation in the Existing Cebu Port Study Area	2-33
Table 2.2.3-2	Terrestrial Vegetation in the New Cebu Port Study Area	2-34
Table 2.2.3-3	Terrestrial Vegetation in the San Remigio Study Area	2-35
Table 2.2.3-4	Terrestrial Vegetation in the Toledo City Port Study Area	2-35
Table 2.2.3-5	Results of Mangal Survey in New Cebu Port Study Area	2-36
Table 2.2.3-6	Mangal Density at New Cebu Port Study Area	2-37
Table 2.2.3-7	Results of Soft Benthos and Macrobenthic Survey in New Cebu Port Area	2-38
Table 2.2.3-8	Results of Seabed Macrobenthic and Soft Benthos Survey in San Remigio Area	2-39
Table 2.2.3-9	Results of Coral Survey	2-40
Table 2.2.4-1	Observed Air Quality and Noise Level at the Vicinity of the Cebu New Port Area	2-42
Table 2.2.4-2	Observed Air Quality and Noise Level at the vicinity of Cebu Base Port Area	2-43
Table 2.3.1-1	Total Population, Annual Growth Rate and Density	2-45
Table 2.3.1-2	Household Population and Household Size	2-46
Table 2.3.1-3	Percent Distribution of Population by Age Group and Sex, 1995	2-47
Table 2.3.1-4	Population 15 years and Over by	

	Employment Status 1999-2000	2-48
Table 2.3.1-5	Ten Leading Causes of Mortality, Morbidity and Infant Mortality 1998	2-51
Table 2.3.1-6	Cebu City Vehicle Registration	2-52
Table 2.3.1-7	Land and Property Ownership	2-54
Table 2.4.1-1	Historical Cargo Data Before and After Revision, Cebu Baseport	2-66
Table 2.4.2-1	Future trend of population by region	2-68
Table 2.4.2-2	GDP annual growth rate	2-69
Table 2.4.2-3	GDP by Region	2-71
Table 2.4.2-4	Growth Projections in the Medium-Term, 2000-2006	2-72
Table 2.4.2-5	GDP and GRDP projection	2-74
Table 2.4.3-1	GRDP Estimation for Cargo Demand Forecast of Cebu Baseport	2-75
Table 2.4.3-2	Summary of Ratio of Traffic Growth Rate to GRDP Growth Rate	2-76
Table 2.4.3-3	Cargo Forecast by Macro Analysis, Cebu Baseport	2-76
Table 2.4.3-4	Summary of Containerized Cargo Volume Estimation, Cebu Baseport	2-79
Table 2.4.3-5	Detailed Estimation of Containerized Cargo, Cebu Baseport ..	2-80
Table 2.4.3-6	Number of Full and Empty Containers at Cebu Base Port	2-81
Table 2.4.3-7	Ratio of Full Containers and Cargo Volume per TEU	2-81
Table 2.4.3-8	Number of Full and Empty Containers of Domestic and Foreign Trades in TEU Projection, Cebu Baseport	2-82
Table 2.4.3-9	Main 18 Commodity for Estimation at Cebu Baseport, 1999 ..	2-83
Table 2.4.3-10	Correlation Coefficient for Commodity Projection, Cebu Baseport Domestic Inbound and Outbound Commodity ..	2-85
Table 2.4.3-11	Summary of Domestic Cargo Estimation by Commodity at Baseport	2-86
Table 2.4.3-12	Summary of Foreign Cargo Estimation by Commodity at Baseport	2-87
Table 2.4.3-13	Comparison of Cargo forecast between Commodity Basis and Macro Basis	2-88
Table 2.4.3-14	Demand Forecast of Cargo Traffic for the Study	2-88
Table 2.4.3-15	Estimation of Passenger Demand at Cebu Baseport	2-90
Table 2.4.3-16	Indicators for Estimation of Passenger by Vessel, Cebu Baseport	2-91
Table 2.4.3-17	Summary of Passenger Traffic Forecast by Vessel Types, Cebu Baseport	2-92
Table 2.4.4-1	Top 10 Main Commodity Throughput at Toled Port,1990-1994	2-94
Table 2.4.4-2	Component of Main Commodity Throughput at Toled Port,1999	2-94
Table 2.4.4-3	Summary of Cargo Demand Projection of Toled Port	2-95

Table 2.4.4-4	Hinterland Population of Toled Port, 1990-2000	2-96
Table 2.4.4-5	Passenger Traffic Estimation, Toled Port. for 2010,2020	2-98
Table 2.4.5-1	Cargo Volume Ratio by Sector, Throughput at Hagnaya Port	2-99
Table 2.4.5-2	Cargo Demand Estimation of San Remigio Port in 2010,2020	2-101
Table 2.4.5-3	Share of Traffic throughput the Hagnaya Port in Total Volume of Santa Fe Management Office	2-102
Table 2.4.5-4	Direct Hinterland and Population of San Remigio Port, 1990-2000	2-103
Table 2.4.5-5	Passenger Traffic Estimation, New San Remigio Port for 2010, 2020	2-104
Table 2.4.6-1	Forecast Vessel Sizes (Foreign Vessels)	2-105
Table 2.4.6-2	Forecast Vessel Sizes (Domestic Vessels)	2-106
Table 2.4.6-3	Share of Cargo by Vessel Type (Domestic Cargo)	2-107
Table 2.4.6-4	Cargo Demand Forecast by Vessel	2-107
Table 2.4.6-5	Passenger Demand Forecast by Vessel	2-107
Table 2.4.6-6	Forecast Average Cargo Volume (Foreign Vessels)	2-108
Table 2.4.6-7	Forecast Average Load Volume (Domestic Vessels)	2-108
Table 2.4.6-8	Forecast Average Passenger (Domestic Vessels)	2-108
Table 2.4.6-9	Forecast of Vessel Calls (Foreign Vessels)	2-108
Table 2.4.6-10	Forecast of Vessel Calls (Domestic Vessels)	2-109
Table 2.4.7-1	Estimation of Average and Maximum size Vessels (Cargo)	2-110
Table 2.4.7-2	Number of Vessel Calls at Toledo Port (Cargo)	2-110
Table 2.4.7-3	Number of Vessel Calls at Toledo Port (Passenger)	2-111
Table 2.4.8-1	Particulars of Regular Vessels at Hagnaya Port and Santa Fe Port	2-112
Table 2.4.8-2	Traffic Volume of Hagnaya, Santa Fe and Baigad Port in 1999	2-112
Table 2.4.8-3	Estimation of Average and Maximum size Vessels	2-113
Table 2.4.8-4	Number of Shipcalls at the New San Remigio Port (Cargo)	2-113
Table 2.4.8-5	Number of Shipcalls at the New San Remigio Port (Passenger)	2-113
Table 2.5.2-1	Required Number of Foreign Container Berths	2-116
Table 2.5.2-2	Required Land Depth of Container Terminal	2-116
Table 2.5.2-3	Total Required Ground Slots	2-117
Table 2.5.2-4	Container Yard Capacity	2-118
Table 2.5.2-5	Required Port Facilities for the New Cebu Port in 2020	2-125
Table 2.5.2-6	Required Port Facilities for Cebu Baseport in 2020	2-125
Table 2.5.3-1	Forecast Annual Container Throughput by TEUs	2-126
Table 2.5.3-2	Required Number of Quay side Gantry Crane	2-127
Table 2.5.3-3	Required Number of RTGs	2-128
Table 2.5.3-4	Required Number of Prime Mover in 2020	2-128
Table 2.5.3-5	Summary of Number of Container Handling Equipment of the New Cebu Port Container Terminal	2-129
Table 2.5.3-6	Foreign Conventional Cargo Handling Volume per Year	2-129

Table 2.5.3-7	Required of Conventional Cargo Handling Equipment of Multipurpose Berth	2-129
Table 2.5.3-8	LCL Cargo Handling Volume in 2000	2-130
Table 2.5.3-9	LCL Cargo Handling Volume in 2020	2-131
Table 2.5.3-10	Summary of LCL Cargoes	2-131
Table 2.5.3-11	Required Number of LCL Cargo Handling Equipment	2-131
Table 2.5.5-1	Existing Navigation Aids	2-141
Table 2.5.5-2	Planned Light House and Light Buoy for Navigation Aids	2-142
Table 2.5.6-1	Standard Design Traffic Volume in Japan (Two Lanes)	2-151
Table 2.5.6-2	Standard Design Traffic Volume in Japan (More Than Two Lanes)	2-151
Table 2.5.6-3	Road Capacity for Multi-Lane High Ways and Expressways	2-151
Table 2.5.6-4	Estimated Traffic Volume by Vehicle Type (Average Annual Daily Traffic)	2-152
Table 2.6.1-1	Traveling Time : Land Route- Sea Route – Land Route	2-158
Table 2.6.1-2	Sailing Schedules from Cebu to Bacolod/ Iloilo	2-158
Table 2.6.3-1	Dimension and Capacity of Ferryboat	2-160
Table 2.6.3-2	Dimension and Capacity of Fast Ferry	2-160
Table 2.6.3-3	Dimension and Capacity of General Cargo Vessels	2-160
Table 2.6.3-4	Number of Operating Ferries classified by Draft and GRT (total 549)	2-160
Table 2.6.4-1	Comparison of Evaluating Items	2-168
Table 2.6.6-1	Phasing Plan of Toledo Port	2-170
Table 2.7.1-1	Traveling Time by Route (as of February 2001)	2-171
Table 2.7.3-1	Dimension and Capacity of Ferryboat	2-172
Table 2.7.3-2	Dimension and Capacity of Fast Ferry	2-172
Table 2.7.4-1	Comparison of Evaluating Items	2-180
Table 2.7.6-1	Phasing Plan of the New San Remigio Port	2-181
Table 2.8.1-1	Objective Ships Size of the Project Ports for 2010 to 2020	2-182
Table 2.8.1-2	Tide, Current and Wave Conditions of Project Ports	2-183
Table 2.8.1-3	Design Wind	2-183
Table 2.8.1-4	Factor for Subsoil Condition C1	2-184
Table 2.8.1-5	Subsoil Classes	2-184
Table 2.8.1-6	Coefficient of Importance	2-184
Table 2.8.1-7	Concrete Strength of Class for Use	2-185
Table 2.8.1-8	Steel Pile Specifications	2-185
Table 2.8.1-9	Corrosion Rate of Steel Members	2-186
Table 2.8.1-10	Unit Weight of Material	2-186
Table 2.8.1-11	Unit Weight and Strength of Fill Materials	2-186
Table 2.8.1-12	Safety Factor of Earthworks and Foundation Works	2-187
Table 2.8.2-1	Loading Conditions of the Wharf	2-189
Table 2.8.2-2	Load Condition of Quay Gantry Crane	2-189

Table 2.8.2-3	Cargo handling Equipment Loads	2-190
Table 2.8.2-4	Load of RTG	2-191
Table 2.8.2-5	Estimated Traffic Volume of Vehicles (car/hr) in 2020	2-193
Table 2.8.2-6	Critical Wheel Load for Pavement Design	2-194
Table 2.8.2-7	Drainage Design	2-194
Table 2.8.2-8	Office Building Space Requirement (sq.m)	2-194
Table 2.8.2-9	Requirement of Water Supply for New Cebu Port Area	2-195
Table 2.8.2-10	Requirement of Power Supply at New Cebu Port Area	2-195
Table 2.8.3-1	Comparison of Quaywall type structure of New Cebu port	2-198
Table 2.8.3-2	Comparison of Quay Wall Structure of Cebu Baseport	2-207
Table 2.9.1-1	Required Period of the Project (Phase 1 and 2)	2-213
Table 2.9.1-2	Summary of Construction Period	2-216
Table 2.9.2-1	Basic Characteristics of Cost Categories	2-216
Table 2.9.2-2	Composition of Costs	2-218
Table 2.9.2-3	Unit Costs of Major Materials and Works (Direct Cost)	2-219
Table 2.9.2-4	Breakdown of Local and Foreign Components	2-220
Table 2.9.2-5	Composition of Equipment Procurement Costs	2-220
Table 2.9.2-6	Cost Comparison of Alternative Layout plans (million Pesos)	2-221
Table 2.9.2-7	Major Work Volume and Preliminary Cost Estimate of Cebu Base Port	2-221
Table 2.9.2-8	Major Work Volume and Preliminary Cost Estimate of the New Cebu Port	2-222
Table 2.9.2-9	Major Work Volume and Preliminary Cost Estimate of the New San Remigio Port	2-223
Table 2.9.2-10	Major Work Volume and P28	2-224
Table 2.10.1-1	List of Risk	2-233
Table 2.10.1-2	Example of other Southeast Asian Ports	2-234
Table 2.10.1-3	Management System	2-240
Table 2.10.2-1	Investment Plan of the New Cebu Port	2-243
Table 2.10.2-2	Investment Plan of Cebu Baseport	2-243
Table 2.10.2-3	Investment Plan of Toledo Port	2-243
Table 2.10.2-4	Investment Plan of the New San Remigio Port	2-243
Table 2.11.1-1	Designated Statistics in Japan	2-247
Table 2.11.2-1	Types of Container Terminal Utilization by Shipping Company	2-250
Table 2.11.2-2	Common forms of Container Berth	2-251
Table 2.11.2-3	Evaluation of Berth System	2-252
Table 2.11.2-4	Comparison of Container Terminal Development Patterns	2-254
Table 2.11.2-5	Port Development and Management Scheme	2-256
Table 2.11.3-1	Container Handling Target Productivity	2-257
Table 3.1.1-1	Components of the Project Cost	3-3
Table 3.1.2-1	EIRRs of the New Cebu Port Project -Long-term project-	3-10
Table 3.1.2-2	Cost Benefit Ratios of the New Cebu Port Project	

	-Long-term project-	3-10
Table 3.1.2-3	Net Benefits of the New Cebu Port Project	3-10
Table 3.1.2-4	Cash Flows of the New Cebu Port Project	3-11
Table 3.1.2-5	Construction Cost of the New Cebu Port Project	3-13
Table 3.1.2-6	Benefit Items relating to the New Cebu Port Project	3-14
Table 3.1.2-7	Warfage	3-19
Table 3.1.2-8	Handling Charge	3-19
Table 3.1.2-9	Excessive Transportation Demand at Cebu Baseport	3-20
Table 3.1.2-10	Sea Transportation Cost of Container	3-23
Table 3.1.2-11	N^{fc} , UN^{fcn} , UN^{fcb} , US^{fcb} and UB^{fcb}	3-29
Table 3.1.2-12	T^{fg} , UN^{fgn} , UN^{fgb} , US^{fgb} and UB^{fgb}	3-30
Table 3.1.3-1	EIRRs of the Cebu Baseport Project -Long-term project-	3-31
Table 3.1.3-2	Cost Benefit Ratios of the Cebu Baseport Project -Long-term project-	3-31
Table 3.1.3-3	Net Benefits of Cebu Baseport Project	3-31
Table 3.1.3-4	Cash Flows of the Cebu Baseport Project -Long-term project ..	3-32
Table 3.1.3-5	Construction Cost of Cebu Baseport	3-33
Table 3.1.3-6	Benefit Items relating to the Cebu Baseport Rehabilitation and Expansion Project	3-34
Table 3.1.3-7	T^{dg} , UT^{dg} and UB^{dg}	3-36
Table 3.1.3-8	Vessel and Cargo Data (1)	3-37
Table 3.1.3-9	Vessel and Cargo Data (2)	3-39
Table 3.1.4-1	EIRRs of the Toledo Project -Long-term project-	3-41
Table 3.1.4-2	Cost Benefit Ratios of the Toledo Port Project -Long-term project-	3-41
Table 3.1.4-3	Net Benefits of Toledo Port Project	3-41
Table 3.1.4-4	Cash Flows of the Toledo Port Project -Long-term project ..	3-42
Table 3.1.4-5	Construction Cost of Toledo Port	3-43
Table 3.1.4-6	Benefit Items relating to the Toledo Port Expansion Project ..	3-44
Table 3.1.5-1	EIRRs of the New San Remigio Project -Long-term project- ..	3-50
Table 3.1.5-2	Cost Benefit Ratios of the New San Remigio Port Project -Long-term project-	3-50
Table 3.1.5-3	Net Benefits of New San Remigio Port Project	3-50
Table 3.1.5-4	Cash Flows of the New San Remigio Port Project -Long-term project	3-51
Table 3.1.5-5	Construction Cost of New San Remigio Port	3-52
Table 3.1.5-6	Benefit Items relating to New San Remigio Port Expansion Project	3-53
Table 3.2.3-1	New Cebu Port	3-63
Table 3.2.3-2	Cebu Baseport	3-64
Table 3.2.3-3	New Cebu Port and Cebu Baseport	3-65
Table 3.2.3-4	New San Remigio Port	3-66

Table 3.2.3-5	Toledo Port	3-67
Table 3.3.1-1	Matrix for Environmental Impacts During Construction Phase, Cebu Base Port	3-69
Table 3.3.1-2	Matrix for Environment Impact During Operation Phase, Cebu Base Port	3-70
Table 3.3.1-3	Matrix for Environmental Impacts During Construction Phase, New Cebu Port	3-71
Table 3.3.1-4	Matrix for Environmental Impacts During Operation Phase, New Cebu Port	3-72
Table 3.3.1-5	Matrix for Environmental Impacts During Construction Phase, San Remigio	3-73
Table 3.3.1-6	Matrix for Environmental Impacts During Operation Phase, San Remigio	3-74
Table 3.3.1-7	Matrix for Environmental Impacts During Construction Phase, Toledo	3-75
Table 3.3.1-8	Matrix for Environmental Impacts During Operation Phase, Toledo	3-76
Table 3.3.2-1	Summary Matrix of Impacts and Their Level of Significance at Various Stage of Development	3-99

List of Figures

Volume 2

		<u>Page</u>
Fig. 2.1.1-1	Tide Current Survey Location Map	2-3
Fig. 2.1.1-2	Major Current Flow in the Proposed Site for New Cebu Port	2-4
Fig. 2.1.1-3	Current Flow Direction Sea Surface	2-5
Fig. 2.1.1-4	Current Flow Direction-Middle Depth	2-6
Fig. 2.1.1-5	Current Flow Direction- Sea Bottom	2-7
Fig. 2.1.1-6	Tide Level Change Graph	2-8
Fig. 2.1.2-1	Bathymetric Survey of Location Map	2-12
Fig. 2.1.2-2	Bathymetric Map	2-13
Fig. 2.1.2-3	Boring Point - Consolacion Site	2-14
Fig. 2.1.2-4	Soil Profile - Consolacion Site	2-15
Fig. 2.1.2-5	Soil Profile (deep area)	2-16
Fig. 2.1.3-1	Location of Topographic Survey	2-19
Fig. 2.3-2	Topographic Map	2-20
Fig. 2.2.1-1	Location Map of Water Quality and Seabed Quality Surveys Sampling Points and terrestrial flora survey area in the Existing Cebu Base Port Area	2-24
Fig. 2.2.1-2	Location Map of Water Quality and Seabed Quality Surveys Sampling Points and Fauna and Flora Survey area in New Cebu Port	2-25
Fig. 2.2.1-3	Location Map of Water Quality and Seabed Quality Surveys Sampling Points in the Toledo Port Area	2-26
Fig. 2.2.1-4	Location Map of Water Quality and Seabed Quality Survey Sampling Points and Fauna and Flora Survey area in San Remigio Port Area	2-27
Fig. 2.4.2-1	Future Trend and population	2-69
Fig. 2.4.2-2	Medium-Term Targets as of May 2,2001-High Growth	2-73
Fig. 2.4.2-3	Medium-Term Targets as of May 2,2001-Low Growth	2-73
Fig. 2.4.2-4	Future Trend and GDP Forecast	2-74
Fig. 2.4.3-1	Domestic Cargo, 1990 – 2000	2-77
Fig. 2.4.3-2	Domestic Cargo, 1990 – 2000	2-77
Fig. 2.4.3-3	Total Cargo Volume	2-79
Fig. 2.4.3-4	Containerized Cargo Volume	2-79
Fig. 2.4.3-7	Trend of Passenger Traffic by Vessel Type, Cebu Baseport	2-92
Fig. 2.4.4-1	Trend of Cargo Demand of Toled Port, 2000 – 2020	2-96
Fig. 2.4.4-2	Trend of Passenger Traffic Demand of San Remigio Port, 2000 - 2020	2-97
Fig. 2.4.5-1	Trend of Cargo Demand of San Remigio Port, 2000-2010	2-101
Fig. 2.4.5-2	Trend of Passenger Traffic Demand of San Remigio Port,	

	2000 - 2020	2-102
Fig. 2.5.4-1	New Cebu Port Layout Plan (alternative 1)	2-133
Fig. 2.5.4-2	New Cebu Port Layout Plan (alternative 2)	2-134
Fig. 2.5.4-3	Cebu Basweport Development Plan (2020)	2-138
Fig. 2.5.5-1	South Passage	2-143
Fig. 2.5.5-2	North Passage	2-144
Fig. 2.5.6-1	Access Road and Cebu North Coastal Road Project	2-149
Fig. 2.5.7-1	Standards of Obstacle Limitation Surface Defined by ICAO	2-154
Fig. 2.5.7-2	Obstacle Limitation Surface of Inner Horizontal and Conical Surface of Mactan Cebu International Airport	2-155
Fig. 2.6.1-1	Relevant Marine Routes for Toledo-San Carlos and San Remigio-Sta. Fe	2-157
Fig. 2.6.3-1	Vessel Distribution by Draft and GRT of Ferryboat in the World	2-161
Fig. 2.6.4-1	Map of Toledo City	2-163
Fig. 2.6.4-2	Toledo Port Master Plan 1	2-164
Fig. 2.6.4-3	Toledo Port Master Plan 2	2-165
Fig. 2.6.4-4	Toledo Port Master Plan 3	2-166
Fig. 2.7.4-1	Candidate Sites for the New San Remigio Port	2-175
Fig. 2.7.4-2	The New San Remigio Port Master Plan 1	2-176
Fig. 2.7.4-3	The New San Remigio Port Master Plan 2	2-177
Fig. 2.7.4-4	The New San Remigio Port Master Plan 3	2-178
Fig. 2.8.2-1	Live Load of QGC	2-189
Fig. 2.8.2-2	Live Load of RTG	2-191
Fig. 2.8.2-3	Load of Container Boxes	2-191
Fig. 2.8.2-4	Typical Sections of Quay Gantry Crane	2-192
Fig. 2.8.3-1	Steel Pipe Type Quaywall for Container Berth	2-201
Fig. 2.8.3-2	Caisson Type Quaywall for Container Berth	2-202
Fig. 2.8.3-3	Open Deck Type Quaywall for Container Berth	2-203
Fig. 2.8.3-4	Sheet Pile Type Quaywall for Toledo Port	2-204
Fig. 2.8.3-5	L-shape Quaywall Alternative for Toledo Port	2-205
Fig. 2.8.3-6	Open Deck Type Berth for the New San Remigio Port	2-206
Fig. 2.8.4-1	Access Road Alignment and Longitudinal Section	2-210
Fig.2.9.1-1(1)	Traffic Demand and Terminal Development Schedule (New Cebu Port, Container Terminal)	2-211
Fig. 2.9.1-1(2)	Master Schedule	2-212
Fig. 2.9.1-2	Construction Schedule (The New Cebu Port - Phase 1)	2-217
Fig. 2.9.1-3	Construction Schedule (San Remigio Port - Phase 1)	2-217
Fig. 2.9.1-4	Construction Schedule (Toledo Port - Phase 1)	2-217
Fig. 2.10.1-1	The Public Bidding process	2-227
Fig. 2.10.1-2	The Unsolicited proposals process	2-228
Fig. 2.10.1-3	Port of Tanjung Priok	2-235
Fig. 2.10.1-4	Port of Laem Chabang	2-236

Fig. 2.10.1-5	Port of North Port of Klang	2-237
Fig. 2.10.1-6	Port of West Port of Klang	2-238
Fig. 2.10.1-7	Port of Manila	2-239
Fig. 2.11.4-1	Conceptual Chart of Information System by Computer Viewpoint of port Management Flow	2-262
Fig. 3.3.1-1	Public Participation Session for Social Acceptability (Brgy Tayud)	3-77

1. Introduction

This report proposes the master plans (long-term development plans) up to 2020 of Cebu Baseport/the new Cebu port and two major outports (Toledo Port and the New San Remigio Port), based on the port development policy in Cebu Province and the selection of the major outports for the master plan study and the New Cebu Port development site, which are described in the Volume one.

The master plan study covered the following work items:

- (1) Demand forecast of passenger and cargo volume based on the socioeconomic framework
- (2) Formulation of master plans based on the required facilities and equipment
- (3) Preliminary engineering design and cost estimation
- (4) Formulation of preliminary implementation and investment plan
- (5) Formulation of the basic strategy for improvement of port management and operation
- (6) Preliminary economic and financial evaluation of long-term plan
- (7) The Initial Environmental Examination for the potential impacts caused by the projects