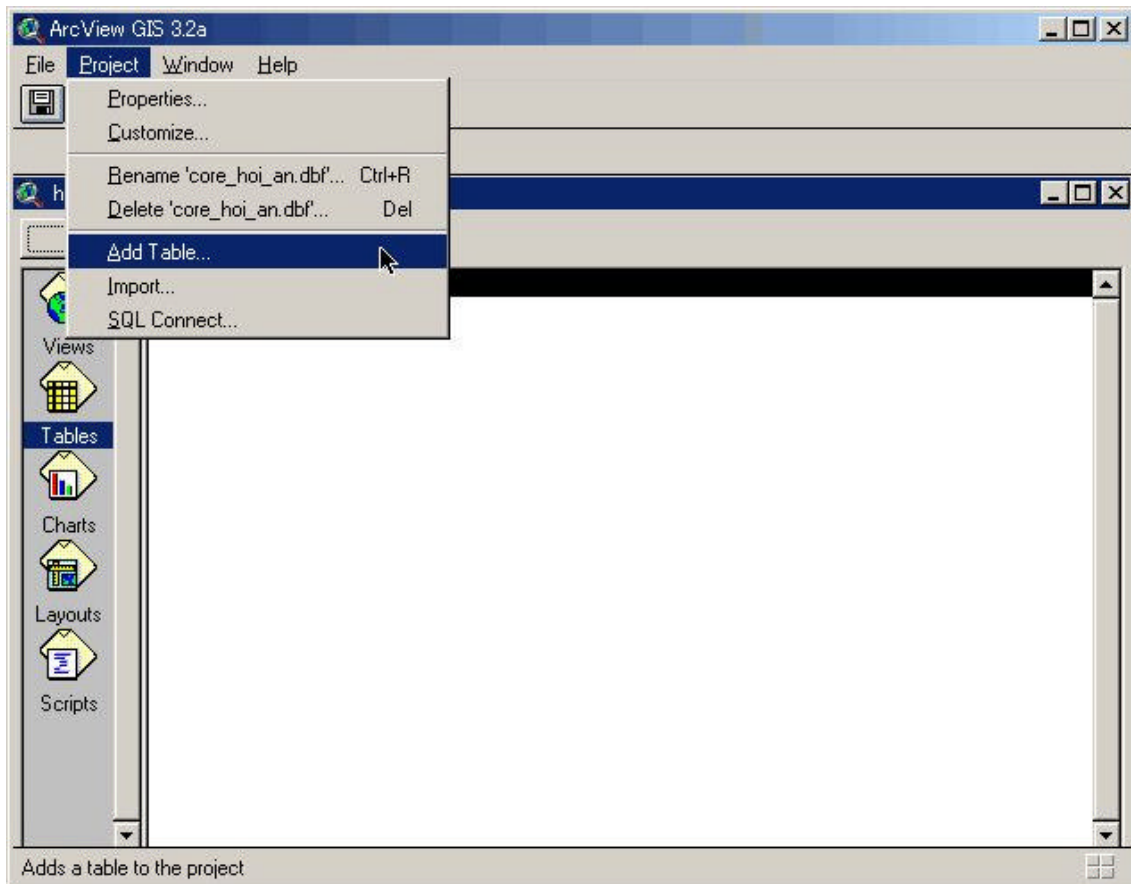
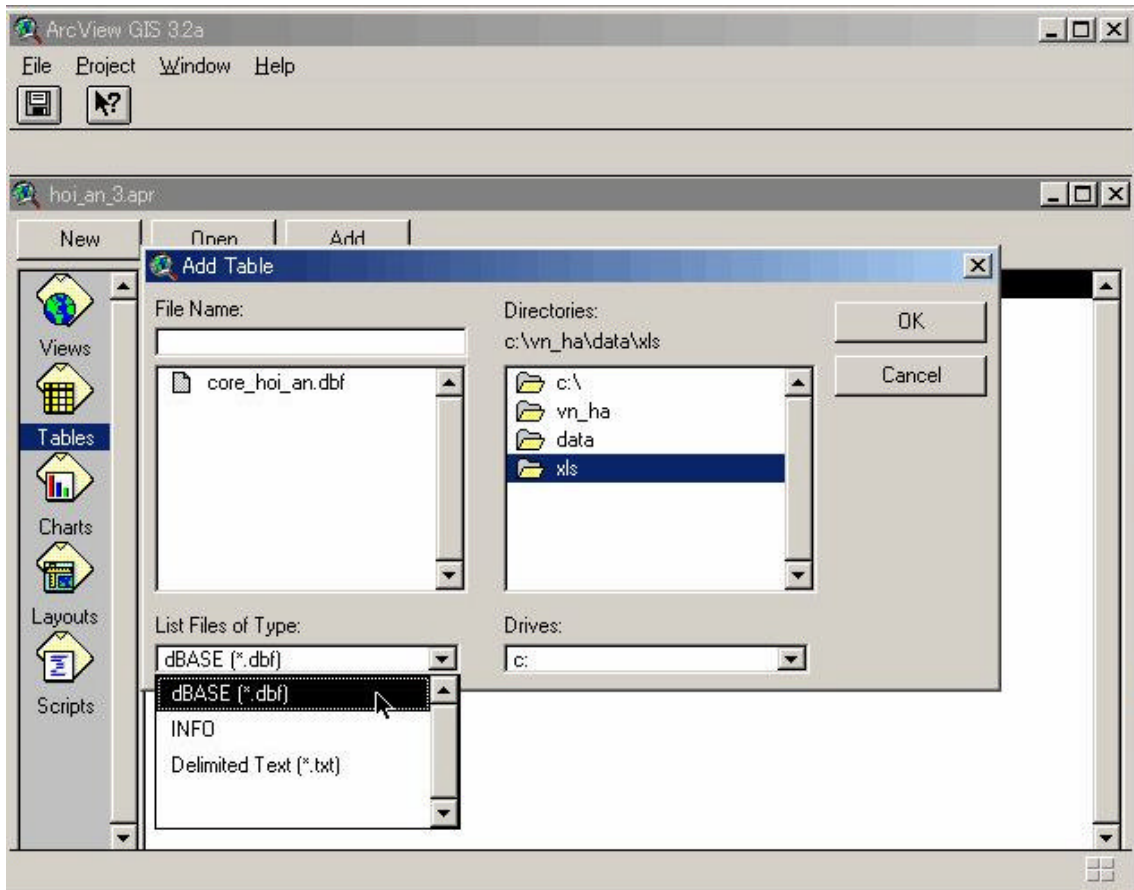


## To load a dBASE, or text file into ArcView

1. Start ArcView. In the dialog that appears, navigate to c:\vn\_ha'. Double-click the 'vn\_ha' directory. Select the project file called 'Hoi\_An\_3.apr' from the list on the left side of the dialog and press OK.
2. Make the Project window active.
3. Choose Add Table from the Project menu.



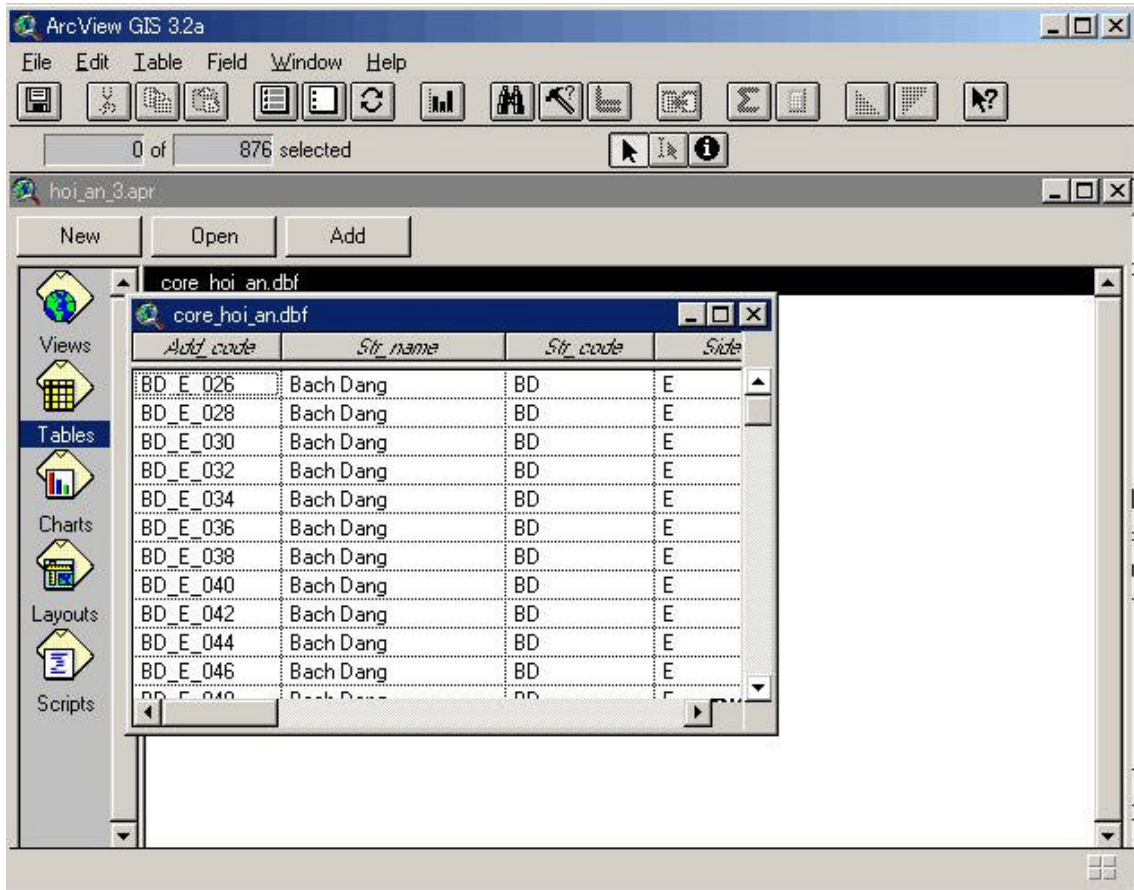
4. In the dialog that appears, choose the type of file you want to load from the List Files of Type dropdown list:



In this example, select dBASE (\*.dbf).

5. Navigate to the directory that contains the file you want to add, in this example, 'c:\vn\_ha\data\xls'.

6. Click on the file you want to add, in this example, 'core\_hoi\_an.dbf'. Press OK. The file is opened in your project. The name of the file is listed in the Tables list in the Project window.



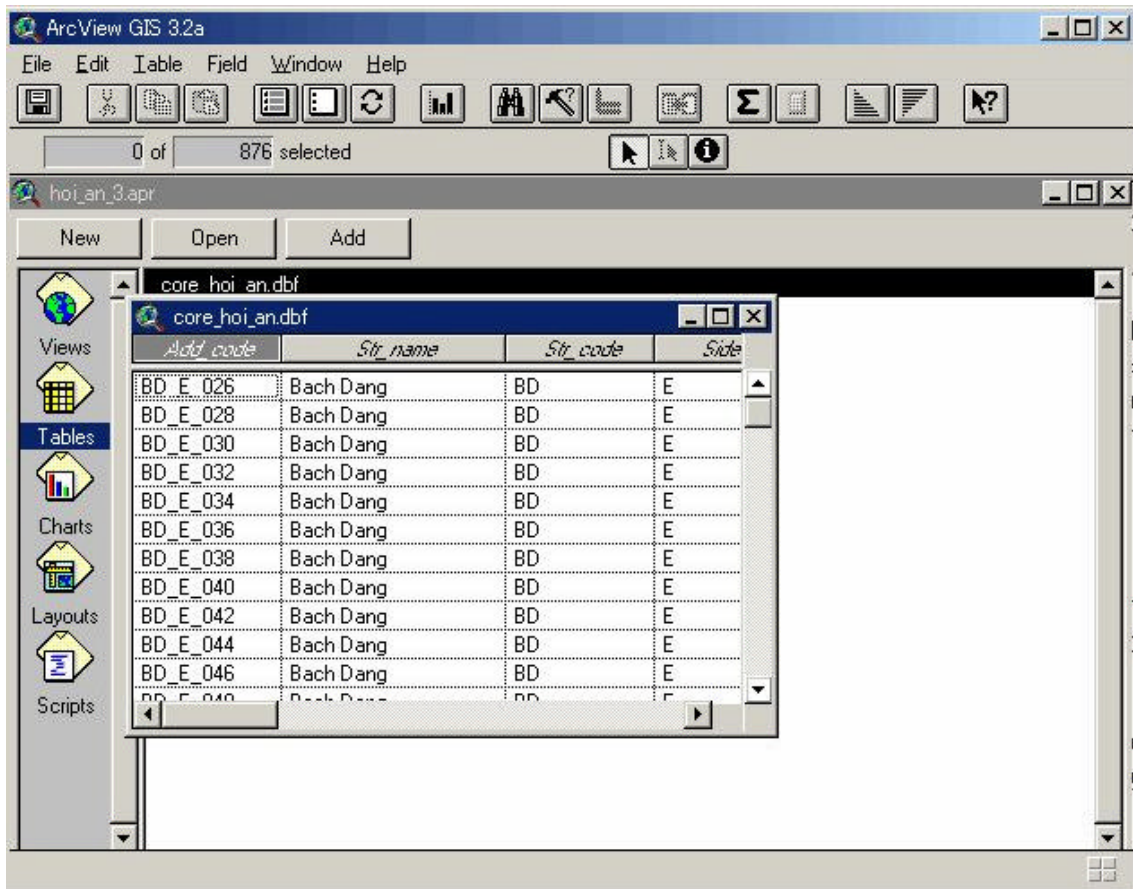
When you load a tabular data file into ArcView, the file is not copied or imported into the project you are currently working on. Instead, ArcView maintains a link between your project and the tabular data file. ArcView remembers location of your file on disk and reads the table in again from that location whenever you open up your project. In this way, changes to the data file are automatically reflected in your project. In addition, while you are working on a table in ArcView you can reread it from disk by choosing Refresh from the Table menu, so you can be sure it reflects the current contents of the file.


## To join a table to a theme's attribute table

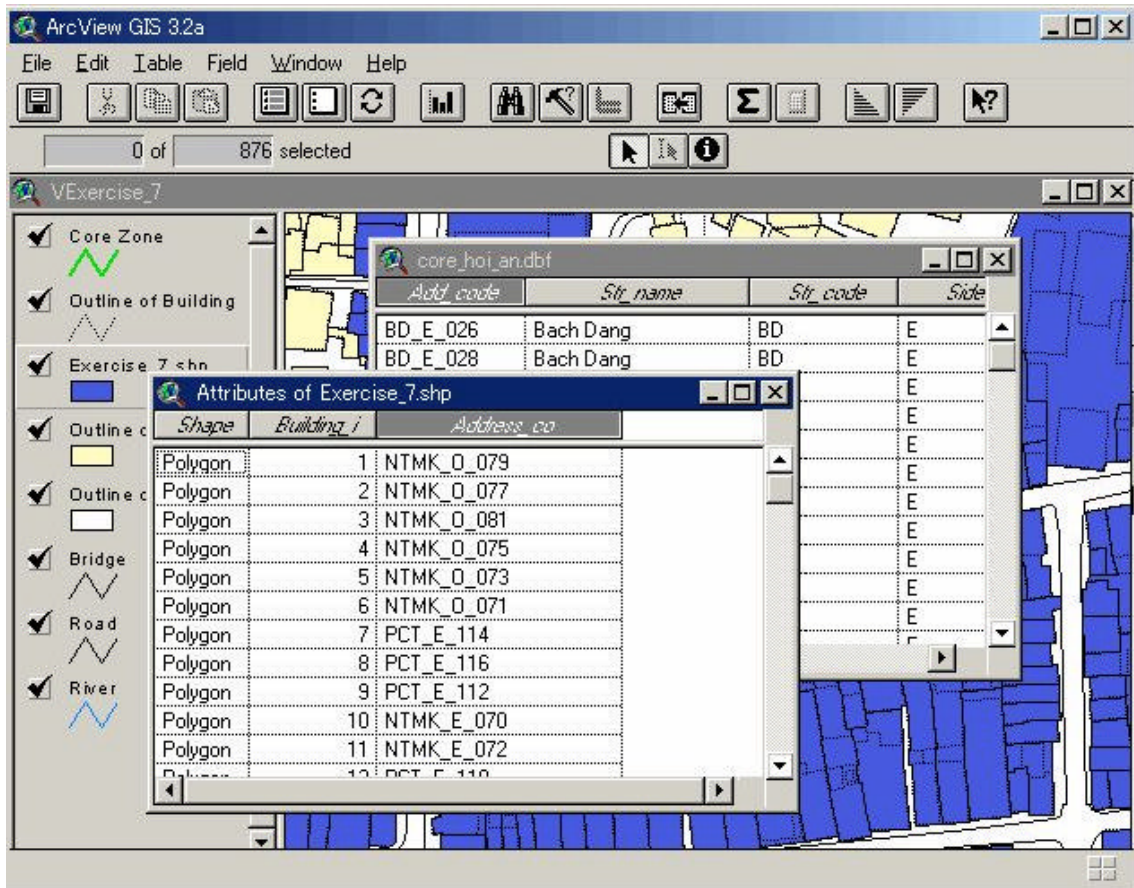
Now that you've loaded your tabular data into ArcView as a table, you can add this data to a map by joining it to the attribute table of a theme. When you join your table to a theme's attribute table, all the fields from your table are appended to the attribute table. You can then use any of these fields to symbolize, label, query, or analyze the theme's features.

As join is based on the values of a field that can be found in both tables. The name of the field does not have to be the same in both tables, but the data type has to be the same. You can join numbers to numbers, strings to strings, booleans to booleans, and dates to dates. Suppose you want to make a map of purpose of historical building. You've created a view and added a theme 'c:\vn\_ha\data\p\_core\exercise\_7.shp', representing the buildings in the Core Zone of Hoi An Old Town. Building characteristics information for the Core Zone is in a dBASE file, 'core\_hoi\_an.dbf', that comes with ArcView, so you've loaded this into your project as a table. Here's how you join this table to the attribute table of the buildings in the Core Zone of Hoi An Old Town so you can symbolize the buildings based on any of the building characteristics it contains. Both tables contain a field that stores the Address Code, so you'll base the join on this common field.


7. In the table containing the data that you want to join to the theme's attribute table, click on the name of the field you'll base the join on, in this case add\_code.

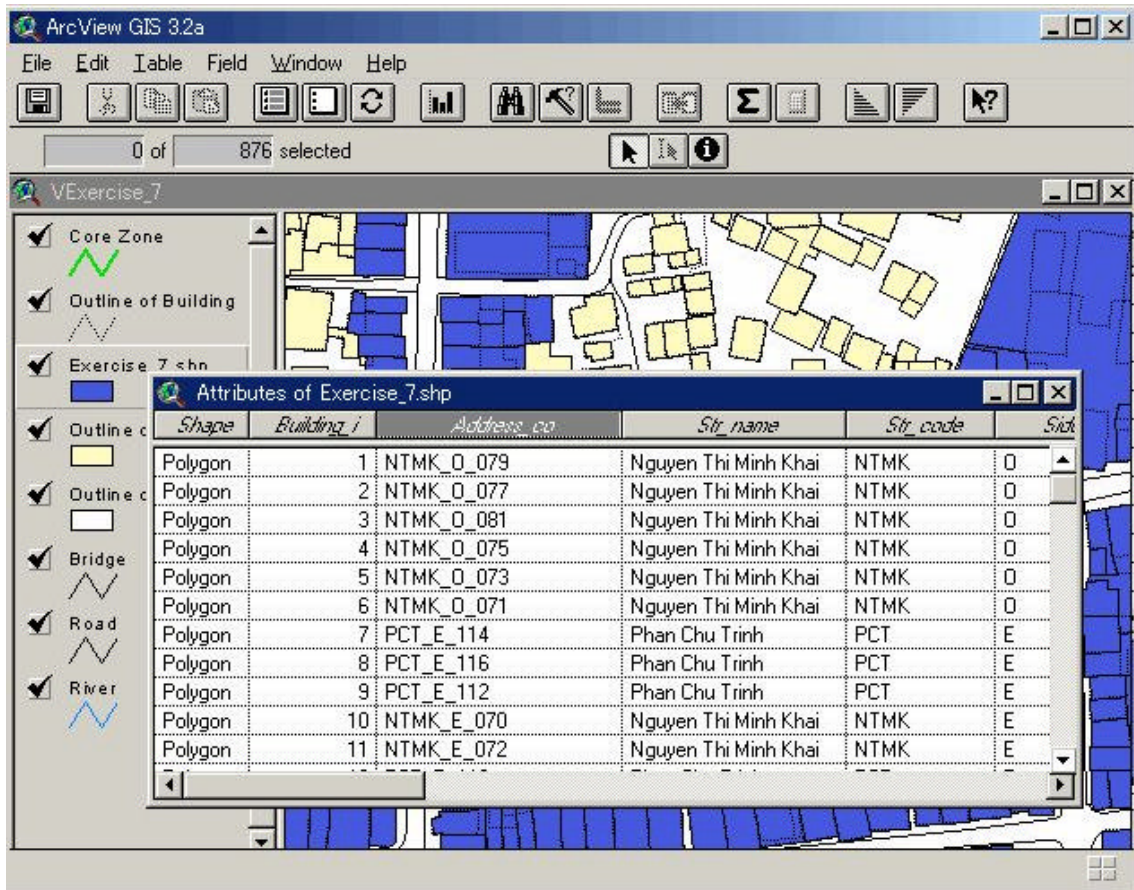


8. In the view's Table of Contents, click the name of the theme you wish to join the data to, in this case Exercise\_7.shp, and open its attribute table by clicking the Open Theme Table button . In the theme's attribute table, click on the name of the field you'll base the join on, in this case Address\_co





9. Click the Join button . All the fields from core\_hoi\_an.dbf are appended into the attribute table of the Exercise\_7.shp theme. The fields appear at the right hand side of the table. Core\_hoi\_an.dbf is closed automatically



You can now use any of these fields to symbolize the Exercise\_7.shp theme to create your map of purpose of historical building.