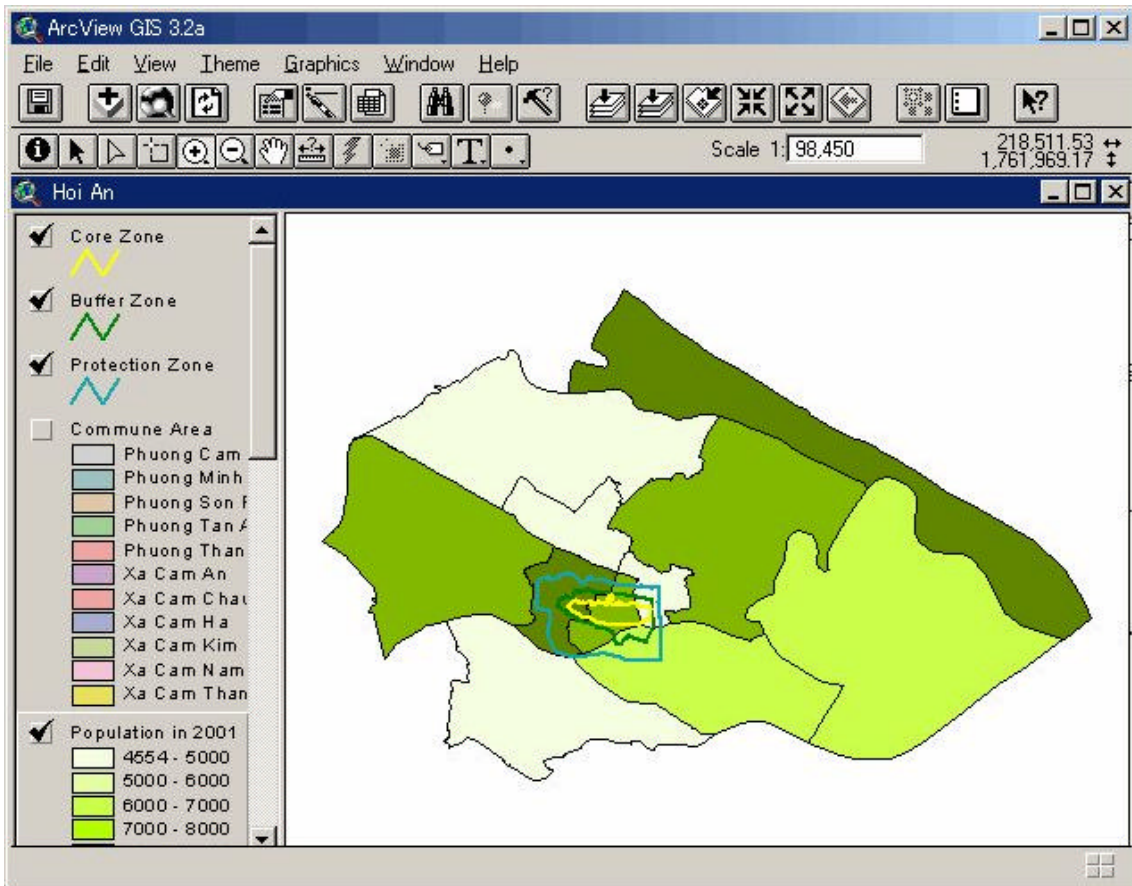


Add the boundary of core zone, buffer zone, and protection zone to the map

7. Turn on the themes for Core Zone, Buffer Zone, and Protection Zone.

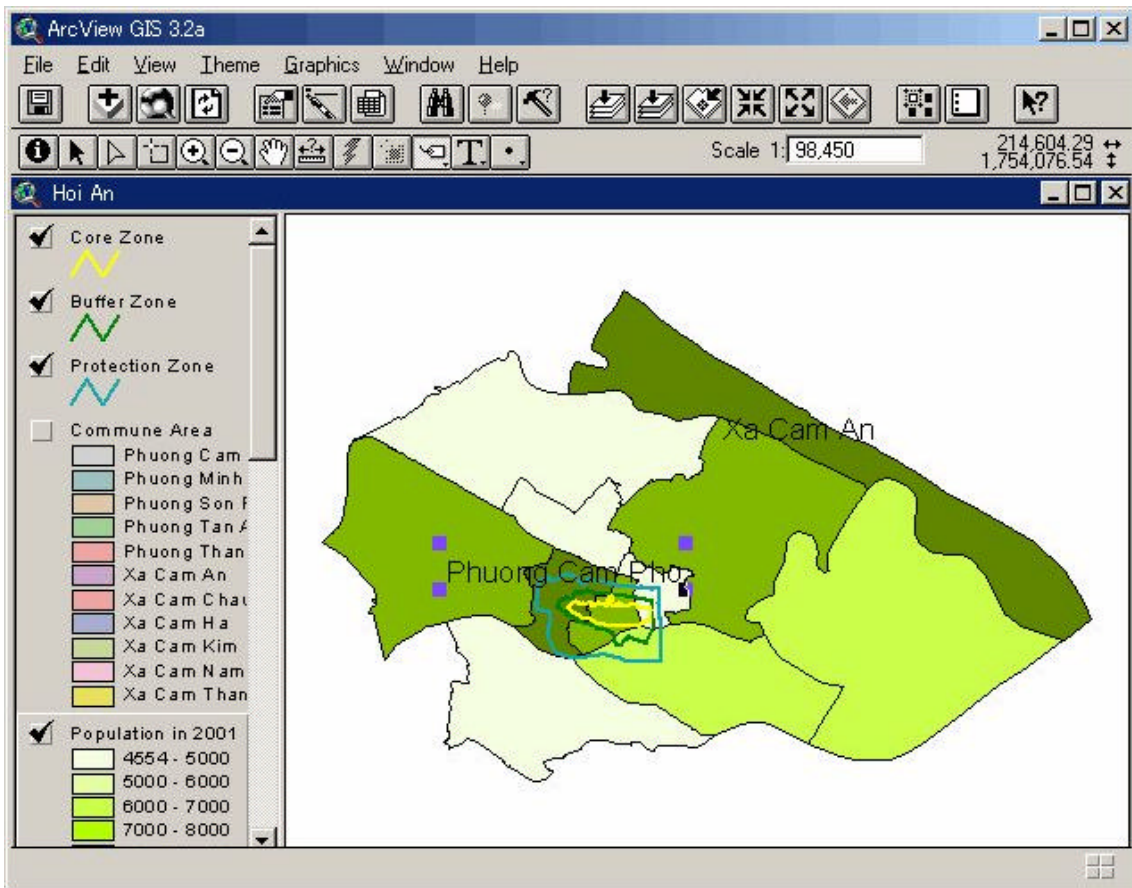



Label some of the communes on the map


8. In the view's Table of Contents, click on the name of the 'Population in 2001' theme to make it *active*. Be sure to click on the name of the theme, not the check box next to the theme's name. When a theme is active, it appears highlighted (raised up) in the Table of Contents. By making a theme active you are telling ArcView you want to work with the features in that theme.

9. Click the Label tool .

10. Click on any commune in Hoi An District, at the position where you want the label to start. The commune will automatically be labeled with its name. You can label as many communes as you like.



11. You can move the labels where you like. To move a label, click the Pointer tool  and click once on the label you want to move. Handles appear around the label to show that it is selected. Now drag it anywhere you like. You can also drag one of the selected label's handles with the Pointer tool to resize the text in the label.

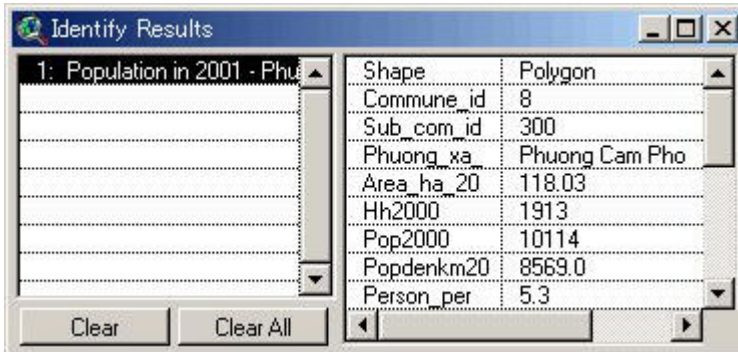
12. When you are finished working with the labels, you can deselect any labels that are still selected by clicking on the map with the Pointer tool  anywhere there's not a label.

To Identify a feature on your map

13. In the view's Table of Contents, click the name of the theme that the feature you wish to identify belongs to. This makes the theme active. When a theme is active, and its attributes appears highlighted (raised up) in the Table of Contents.

14. Click the Identify tool .

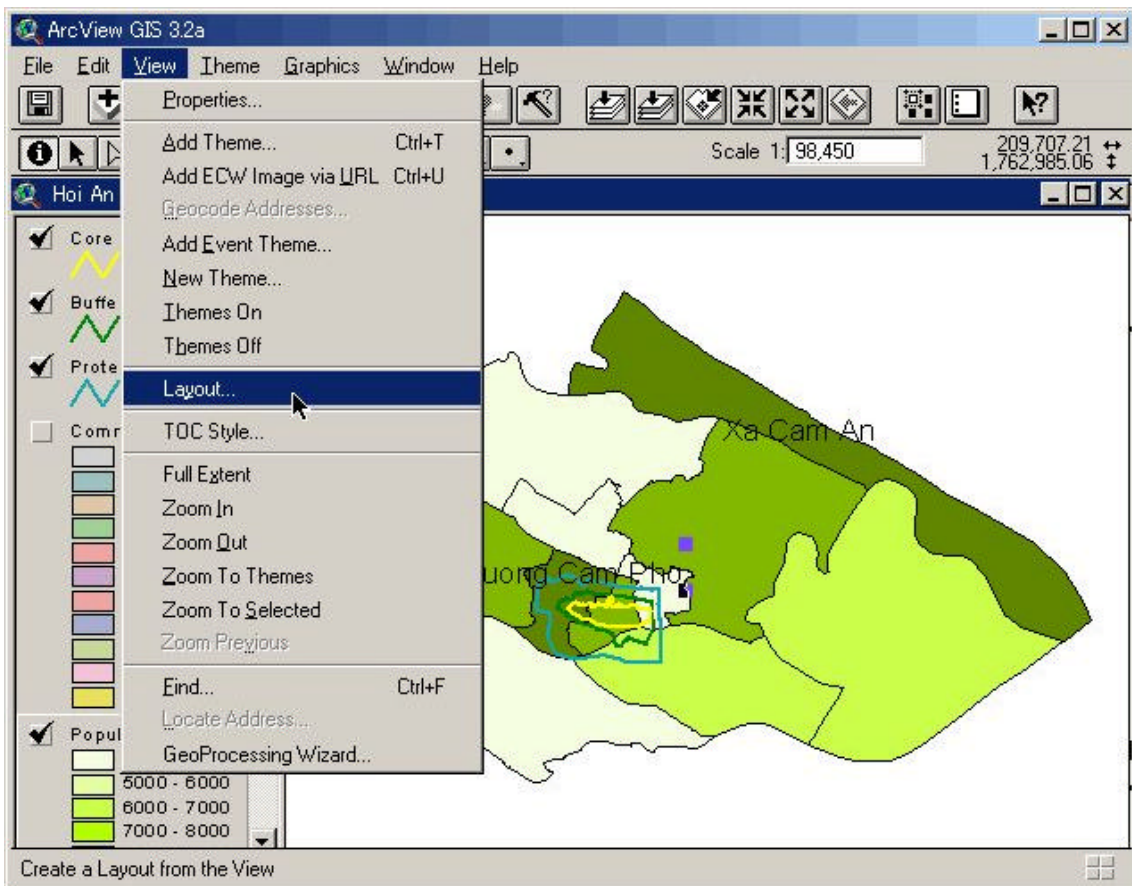
15. Click on the feature you wish to identify. The feature you click on flashes in the view, and its attributes appear in the Identify Results dialog.



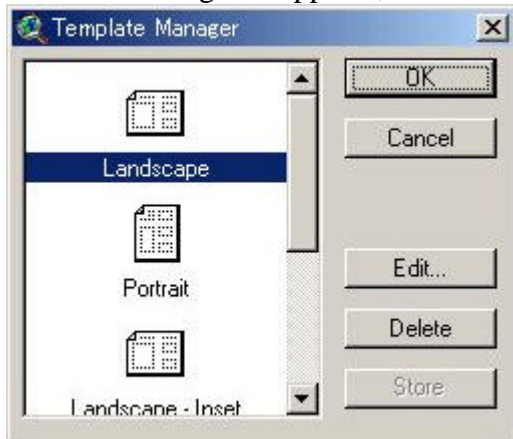
If you want to identify a feature but you aren't sure which theme it belongs to, make all the likely themes active before using the Identify tool. To make more than one theme active, hold down SHIFT and click on their names one by one in the view's Table of Contents.

Prepare your map for inclusion in your report

16. From the View menu, choose Layout.

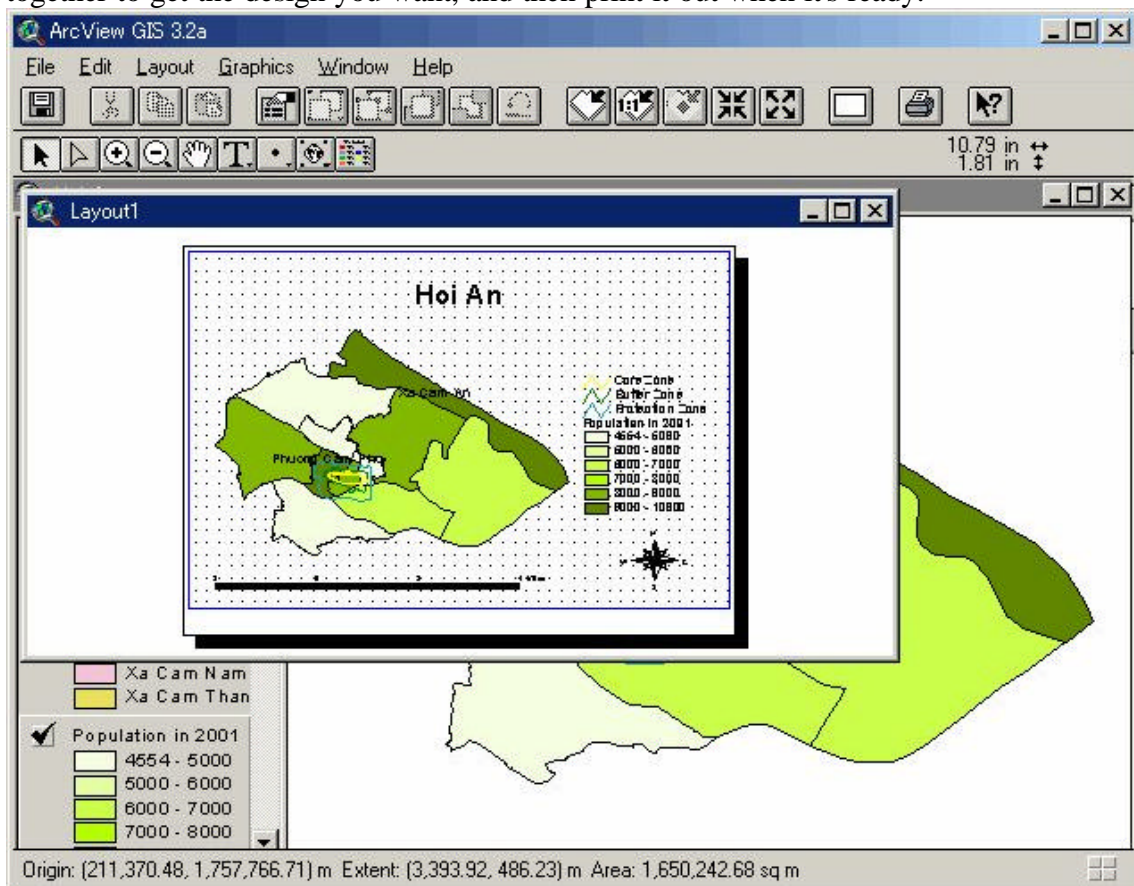



17. In the dialog that appears, click the Landscape template.



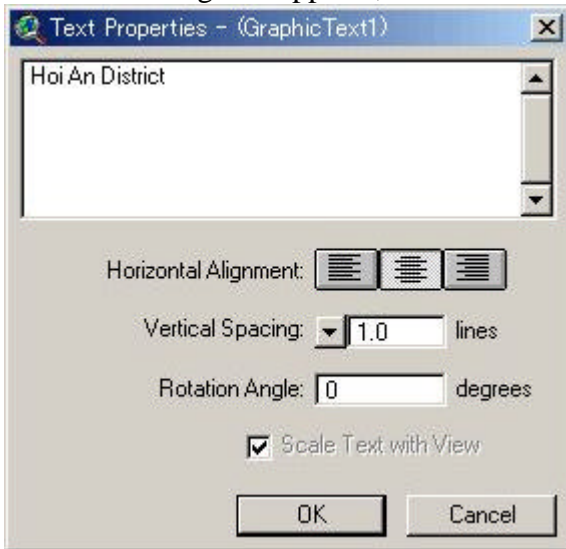
18. Press OK. ArcView automatically creates a layout that includes your map of Hoi An, a legend, a title, a north arrow and a scale bar.


A layout makes it easy to produce presentation quality maps with ArcView. With a layout, you can assemble all the components you want to appear in your map, arrange them together to get the design you want, and then print it out when it's ready.

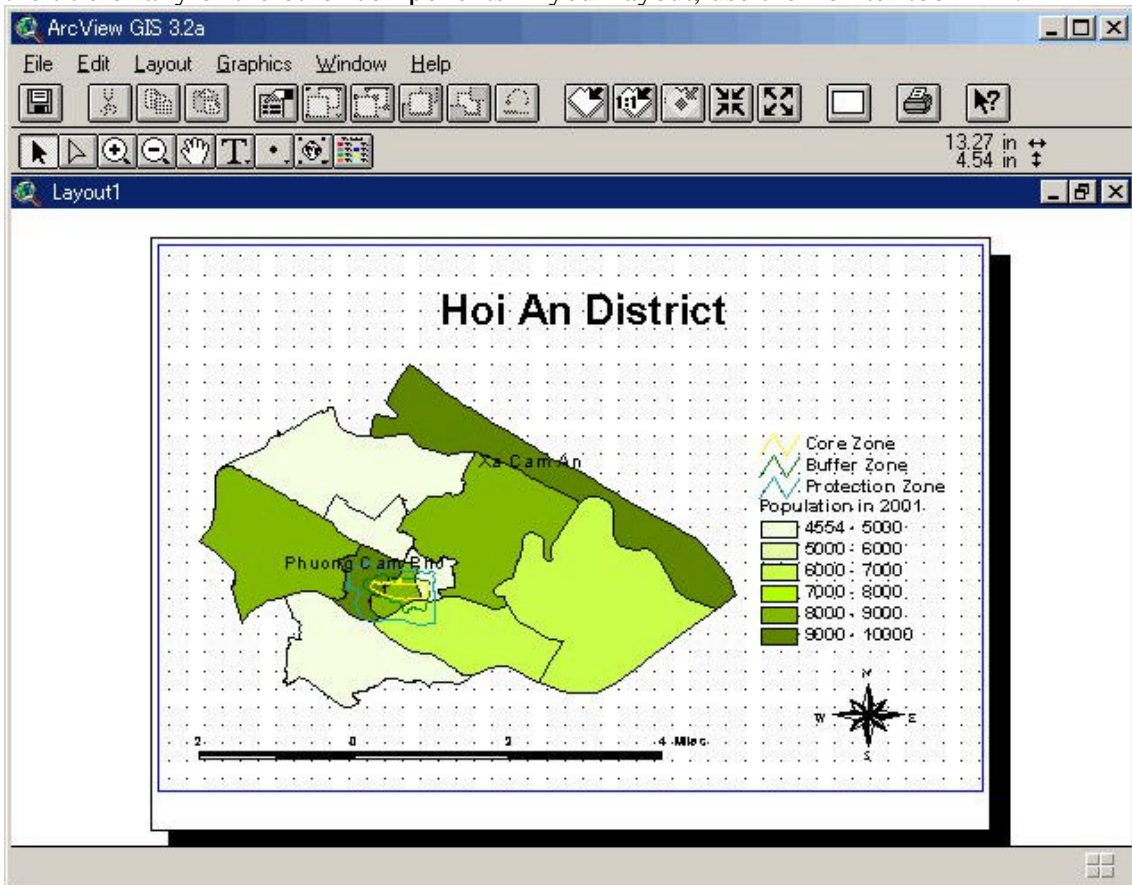


19. By default, ArcView uses the view's name as the title for the layout. You can change the title 'Hoi An' to 'Hoi An District' With the Pointer tool , double-click the title.

20. In the dialog that appears, add District to the existing text.




21. Press OK. The title on the layout changes to 'Hoi An District'. If you want to change the title's font, choose Show Symbol Window from the Window menu. To move or resize the title or any of the other components in your layout, use the Pointer tool .



Congratulations! You've made your first map with ArcView! Now print it so you can show it off!

Print your layout

22. From the File menu, choose Print Setup. In the dialog that appears, change the orientation of your printout to Landscape. In this way, your printout will match the orientation of your layout.

23. Click the Print button . In the dialog that appears, click OK.

Alternatively, you could export your layout to a graphics file so that you can import this file into your report. To export your layout, choose Export from the File menu.

You've successfully completed the first exercise and acquired the basic ArcView skills. In the next exercise,

To save your work as a new project file

24. Make the Project window active. The Project window is currently hidden by the view and layout windows you opened in this exercise. To make the Project window active, either close those windows or choose quick_start.apr from the Window menu.


25. From the File menu, choose Save Project As. In the dialog that appears, specify a name and location for the new project file, and press OK. ArcView will automatically add the .apr extension to the name you gave for the new project file.

3. QUERYING DATA

3.1 Identifying features with the mouse


The fastest way to get information about a single feature is to identify it. If you want to compare information about several features, the best way is to select the features on the map and look at their records in the layer attribute table. When you have a piece of information - a place name or address, for instance - but don't know which feature it belongs to, you can use the information to search the map for the feature.

Exercise 2: Identifying features with the mouse

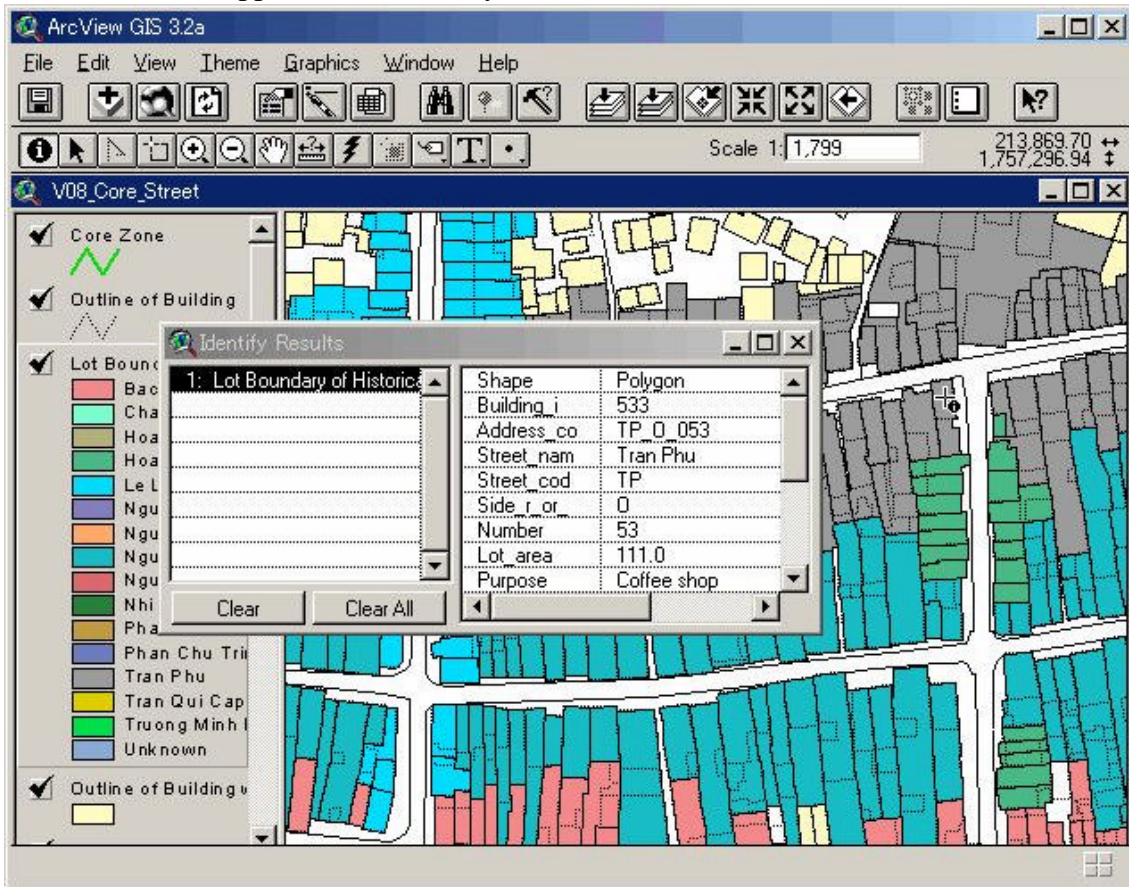
To get the attributes of a single feature on a map, click on it with the Identify tool . Suppose you are looking at a view of the Hoi An Old Town and you want to get information about a particular historical building in the GIS Database for Monuments Management and Prevention.

1. Start ArcView. In the dialog that appears, navigate to c:\vn_ha'. Double-click the 'vn_ha' directory. Select the project file called 'Hoi_An_2.apr' from the list on the left side of the dialog and press OK.


2. In the view's Table of Contents, click the name of the theme containing the feature you wish to identify, in this case Lot Boundary of Historical Building by Street, to make this theme active.

3. Click the Identify tool .

4. Click on the feature you wish to identify. The feature you click on flashes in the view and its attributes appear in the Identify Results window:



3.2 Selecting features with the mouse

To select a feature in the active theme using the mouse, click on the feature with the Select Feature tool . To select more than one feature, hold down SHIFT when you use the tool. You can also use this tool to drag a box over a group of features you want to select. Features that fall partly or wholly inside the box you define are selected.