

Fig. 12-51 Plot of Simulated Versus Observed Groundwater Level

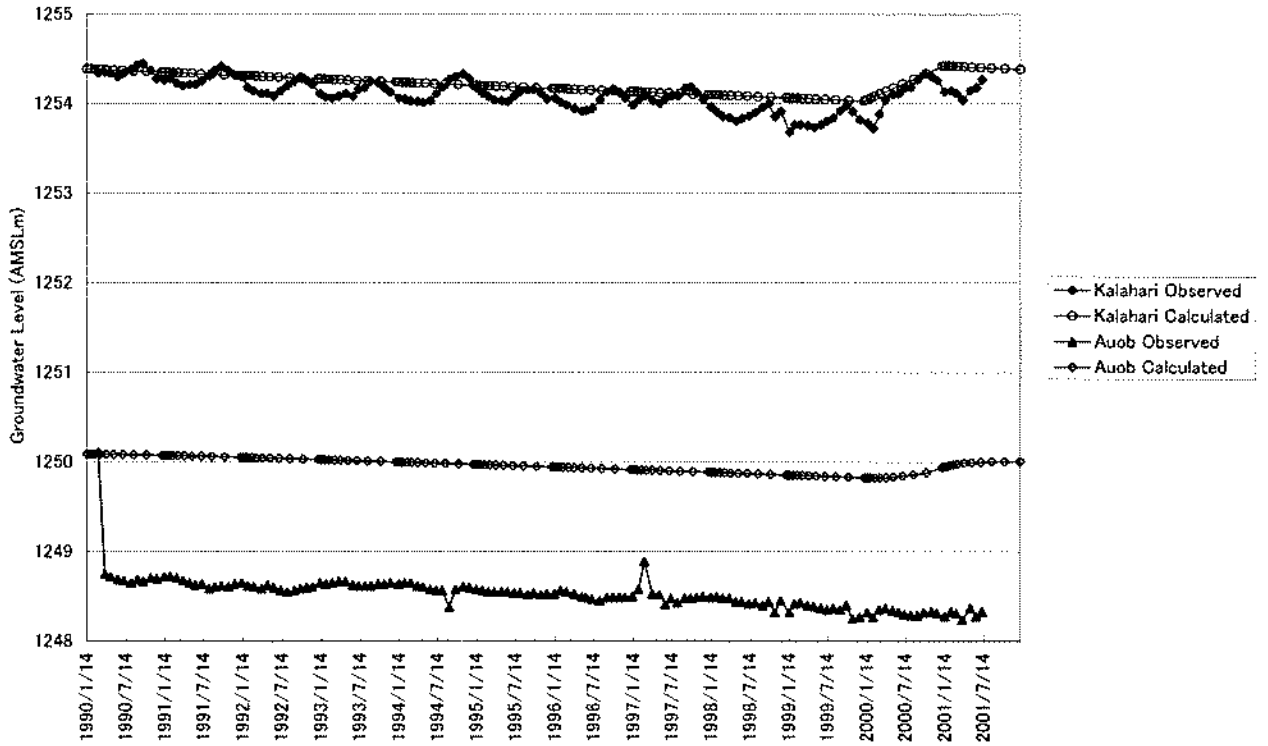


Fig. 12-52 Variation of Observed and Calculated Groundwater Level at Olifantswater

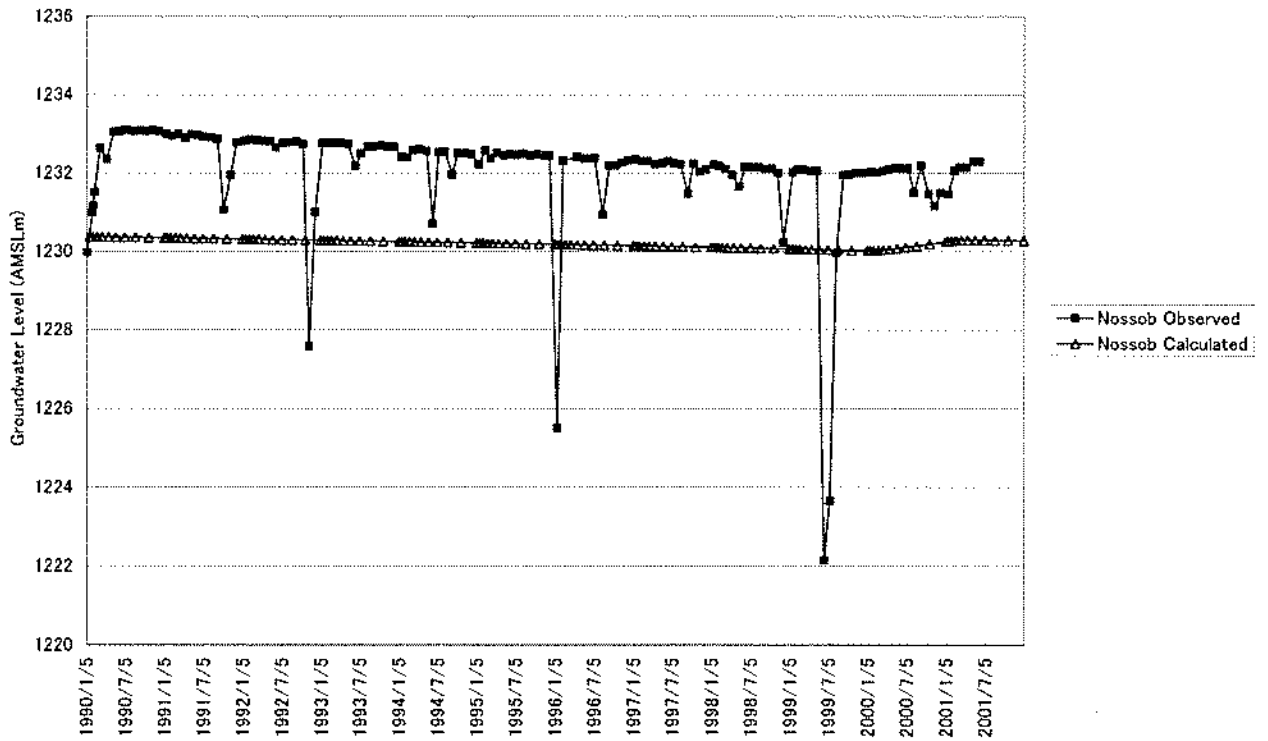


Fig. 12-53 Variation of Observed and Calculated Groundwater Level at Gomchanas

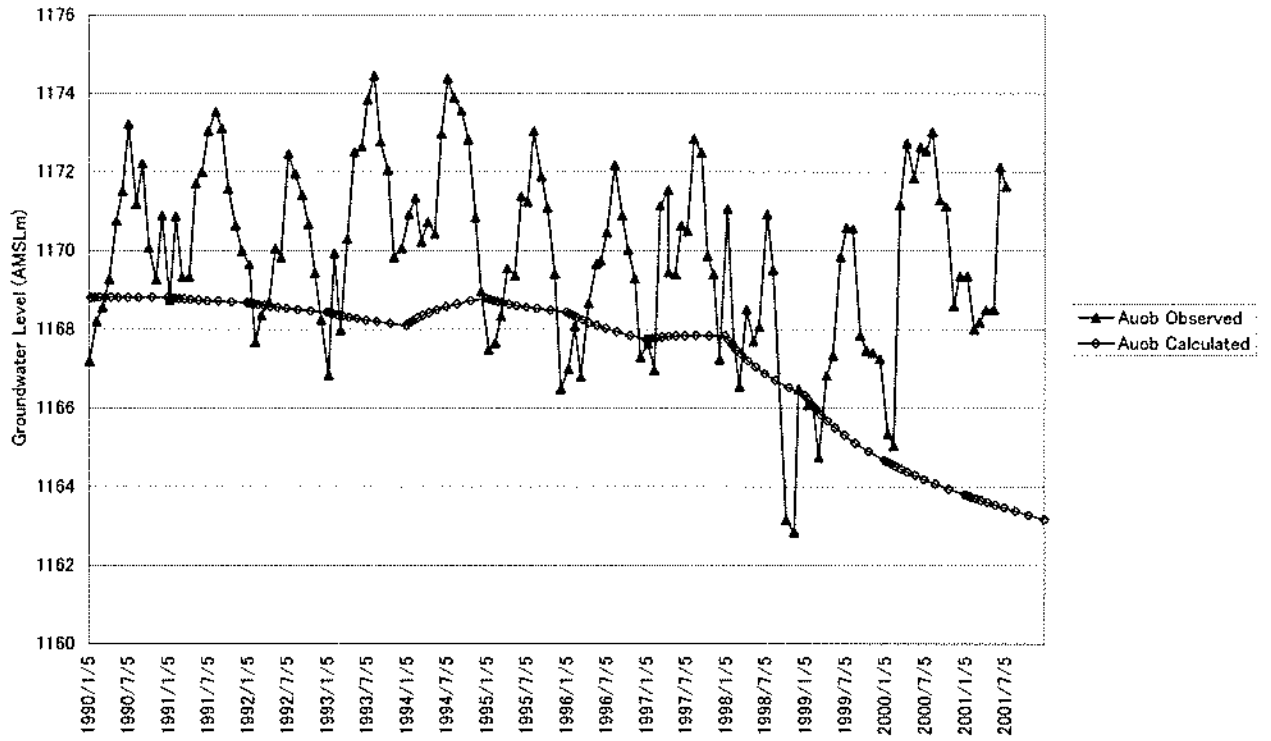


Fig. 12-54 Variation of Observed and Calculated Groundwater Level at Spes Bona

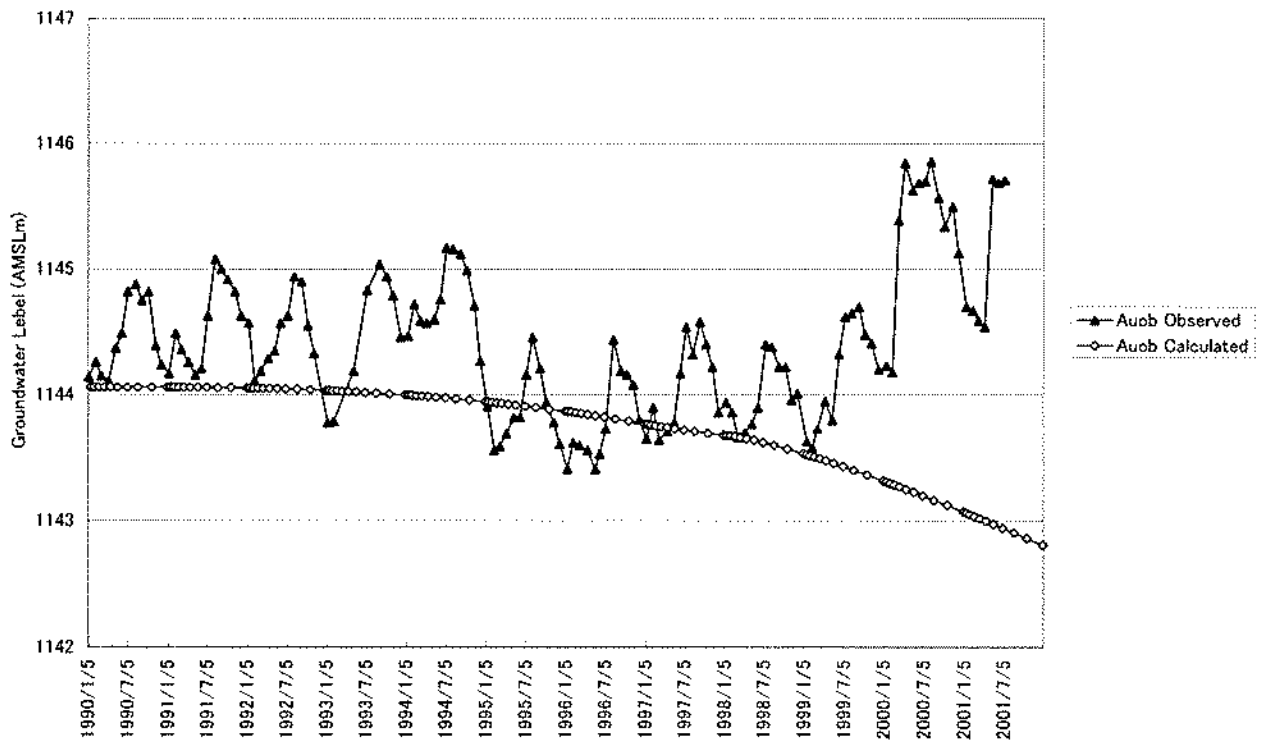


Fig. 12-55 Variation of Observed and Calculated Groundwater Level at Boomplaas

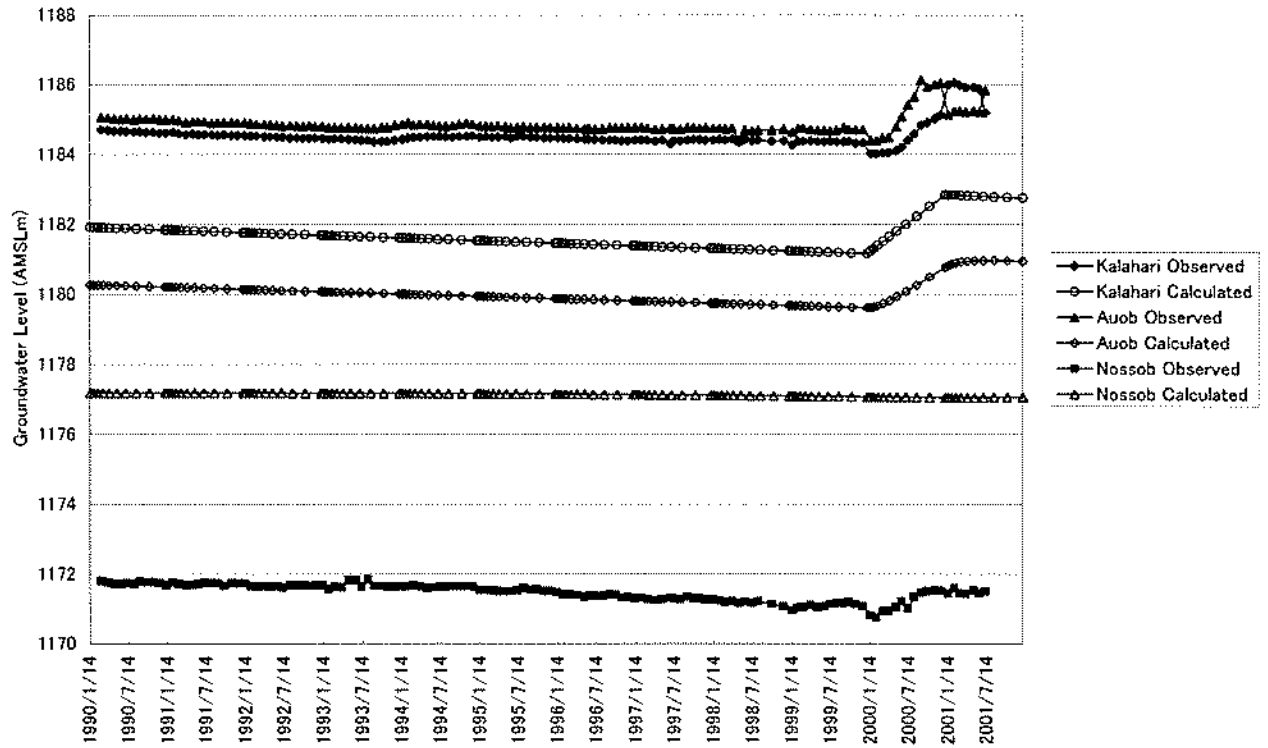


Fig. 12-56 Variation of Observed and Calculated Groundwater Level at Tugela

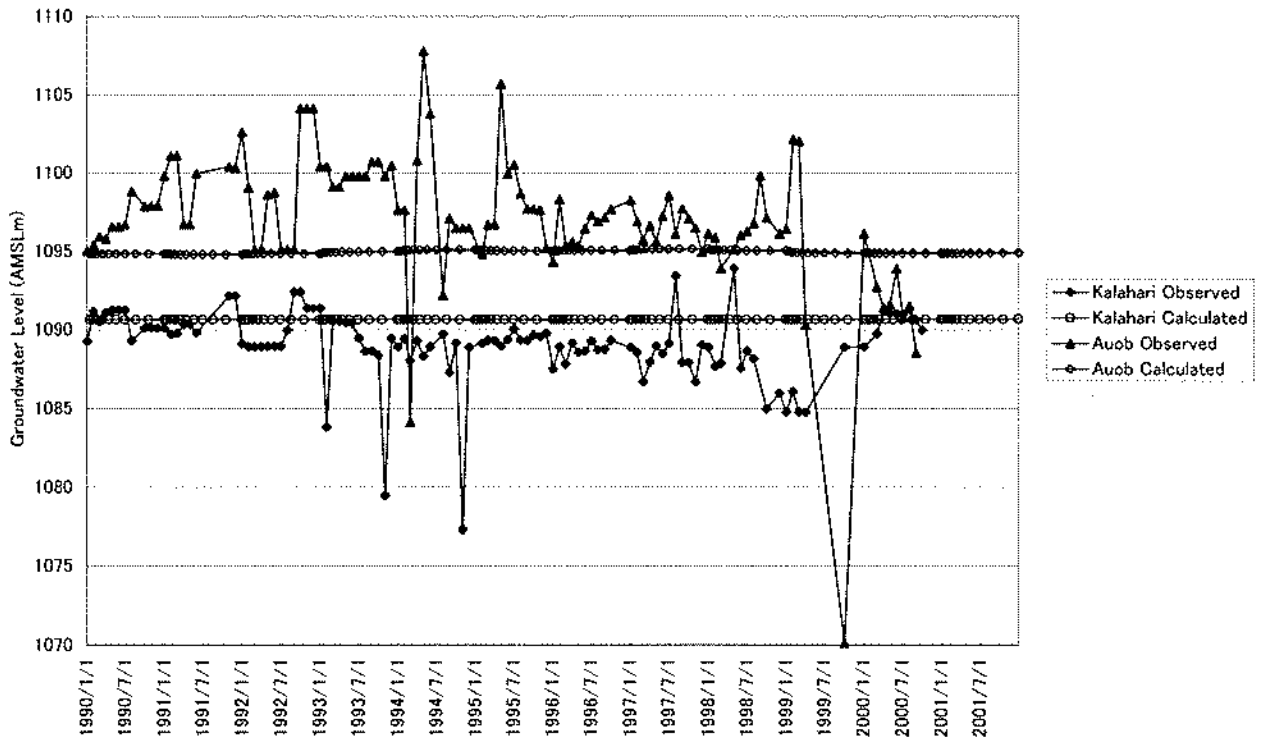


Fig. 12-57 Variation of Observed and Calculated Groundwater Level at Gochas

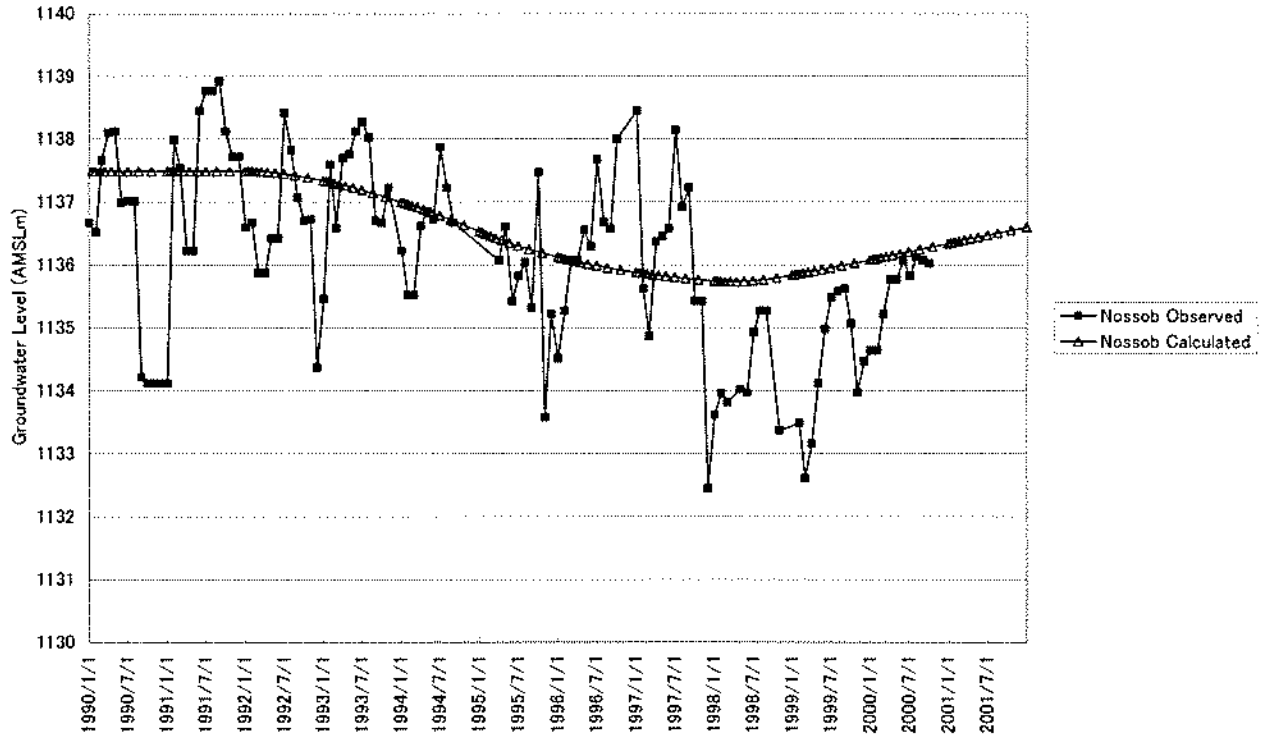


Fig. 12-58 Variation of Observed and Calculated Groundwater Level at Aranos

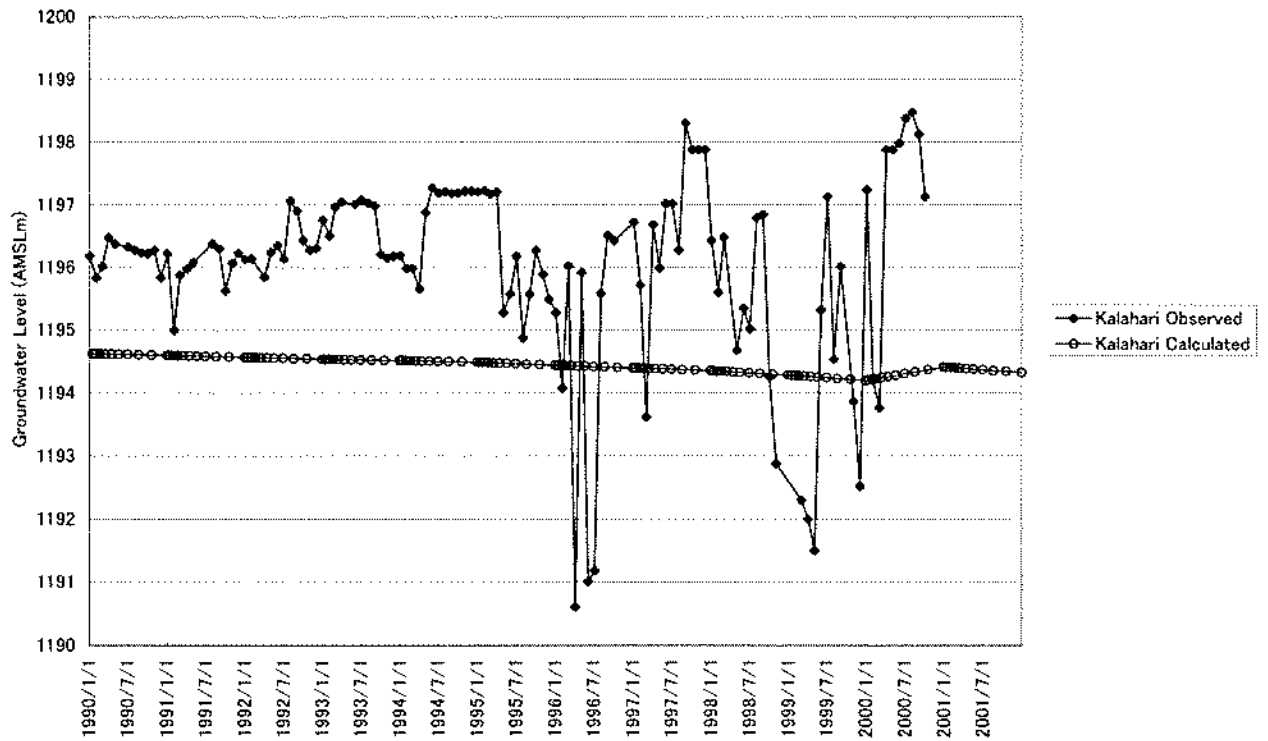
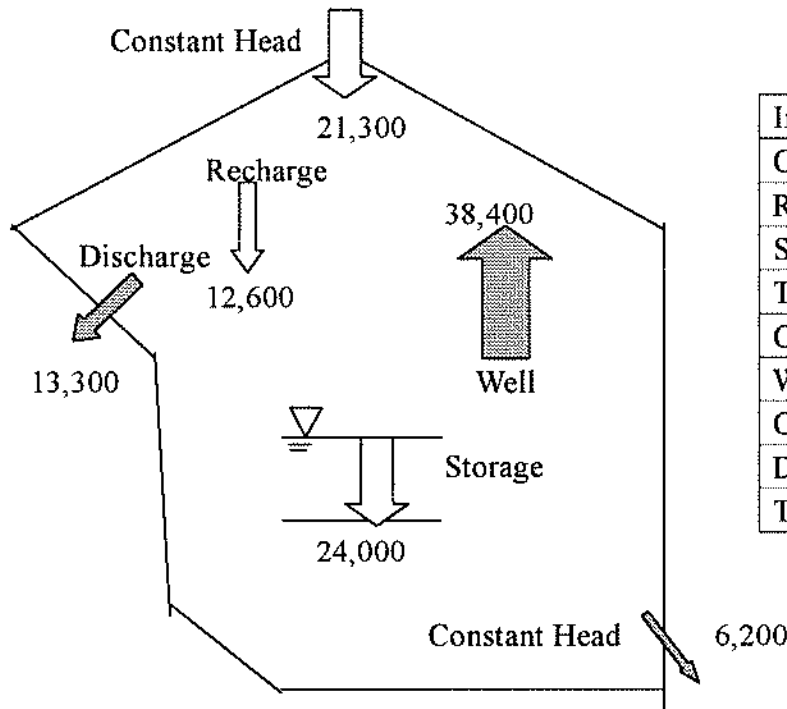
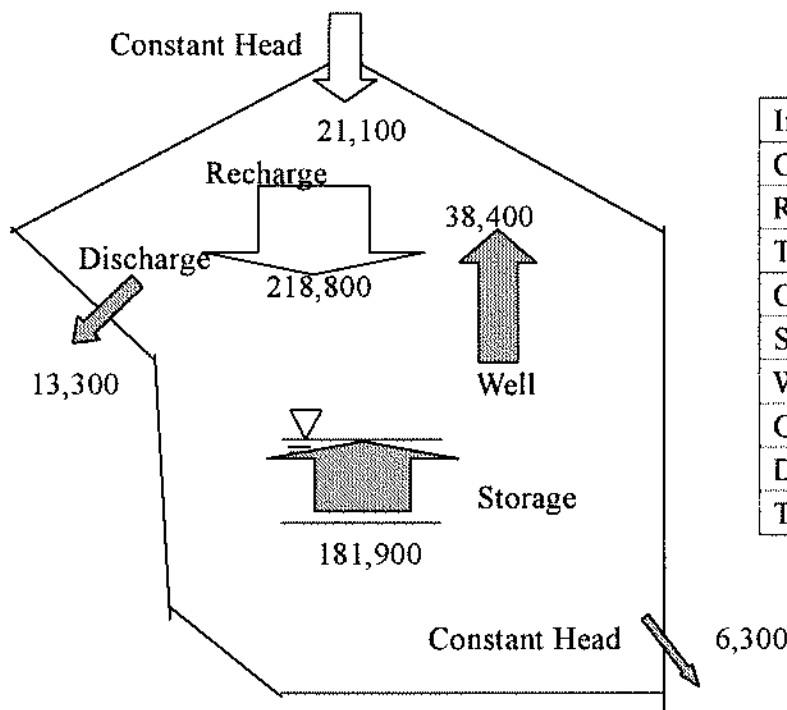


Fig. 12-59 Variation of Observed and Calculated Groundwater Level at Aminuis



In	m ³ /day
Constant Head	21,300
Recharge	12,600
Storage	24,000
Total	57,900
Out	
Well	38,400
Constant Head	6,200
Discharge	13,300
Total	57,900

Fig. 12-60 Water Budget in 1999



In	m ³ /day
Constant Head	21,000
Recharge	218,800
Total	239,900
Out	
Storage	181,900
Well	38,400
Constant Head	6,300
Discharge	13,300
Total	239,900

Fig. 12-61 Water Budget in 2000

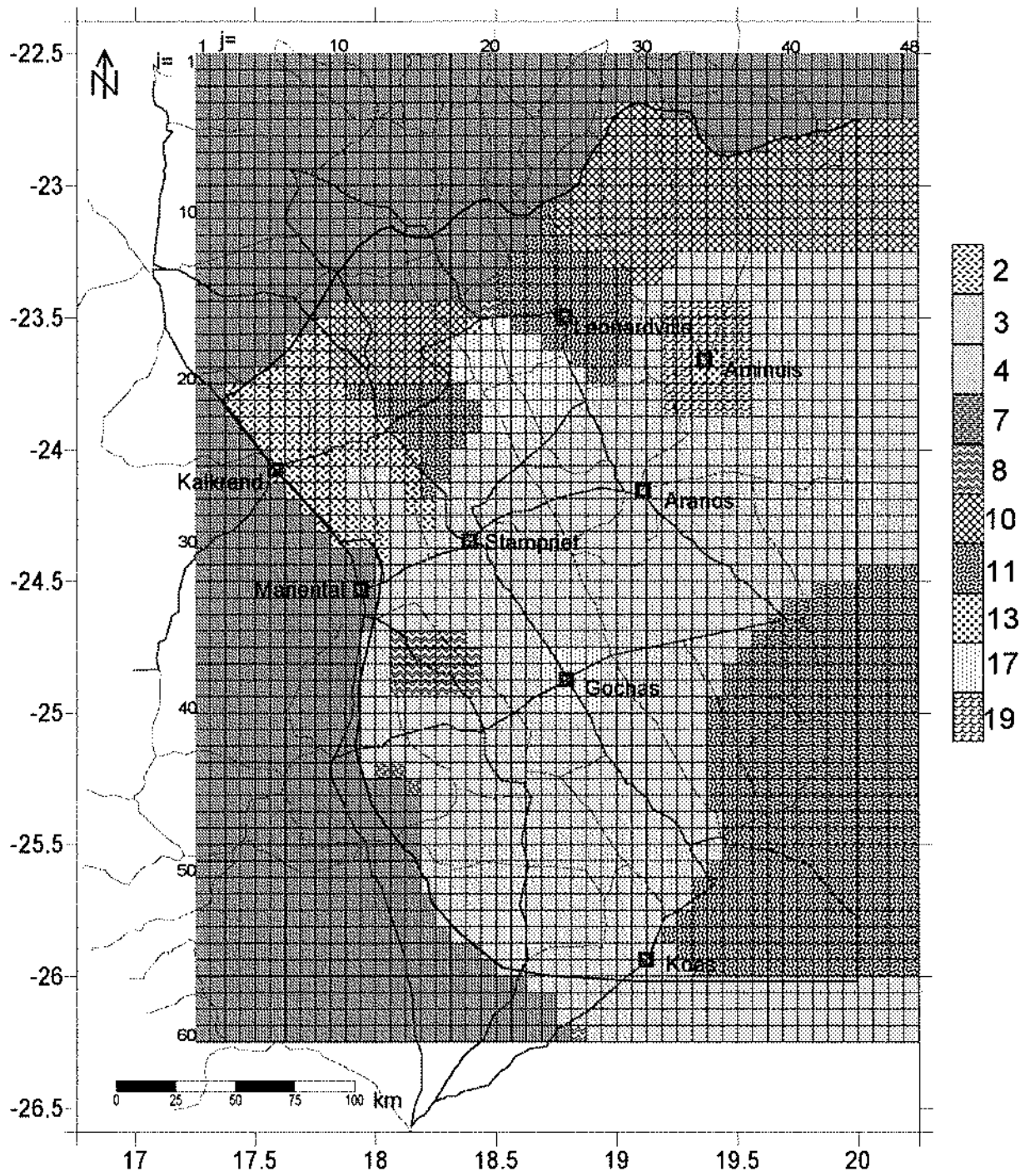


Fig. 12-62 Fixed Hydraulic Conductivity of Model Layer 1
(Zone Number Corresponds to that in Table 12-25)

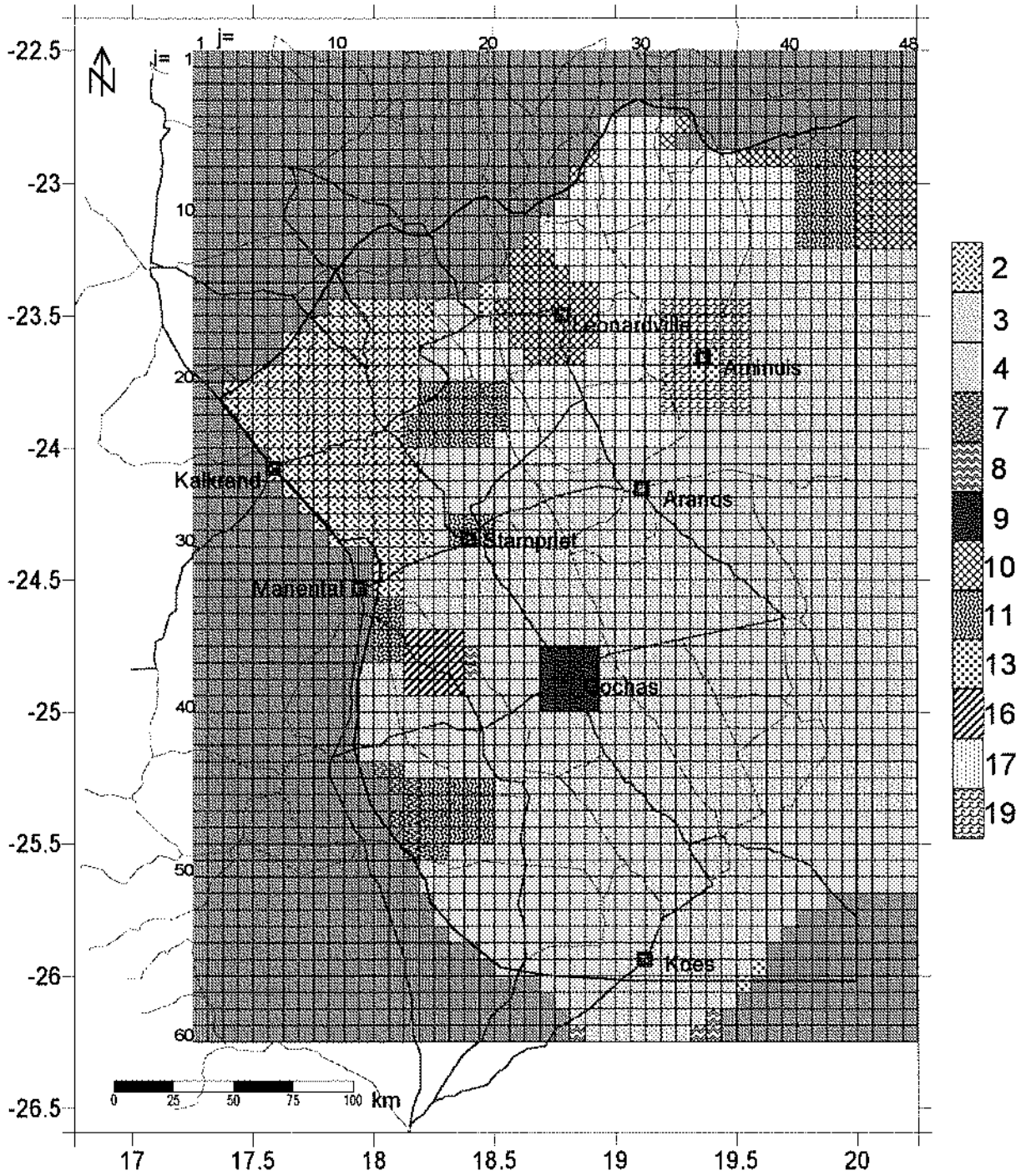


Fig. 12-63 Fixed Hydraulic Conductivity of Model Layer 2
(Zone Number Corresponds to that in Table 12-25)

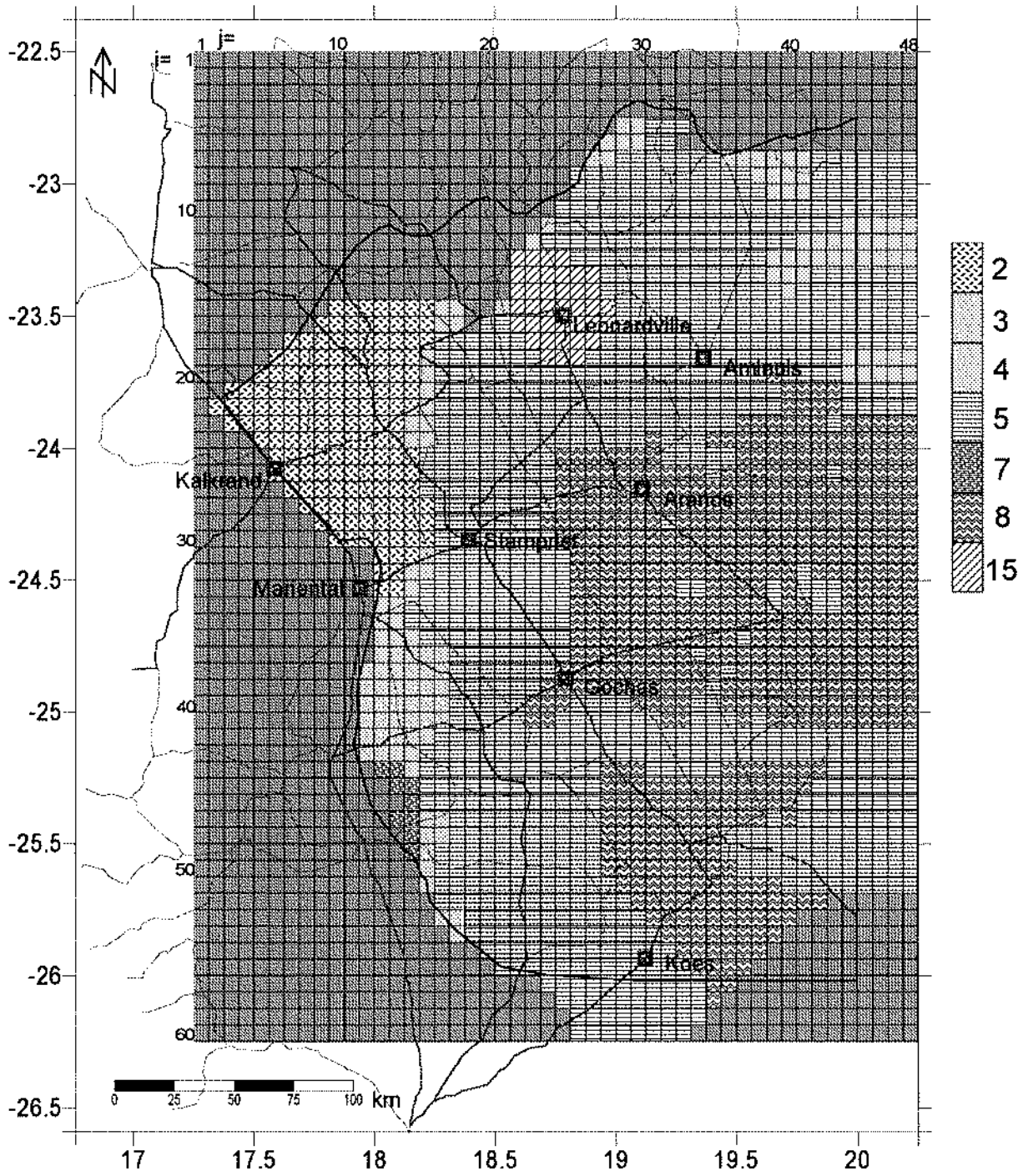


Fig. 12-64 Fixed Hydraulic Conductivity of Model Layer 3
(Zone Number Corresponds to that in Table 12-25)

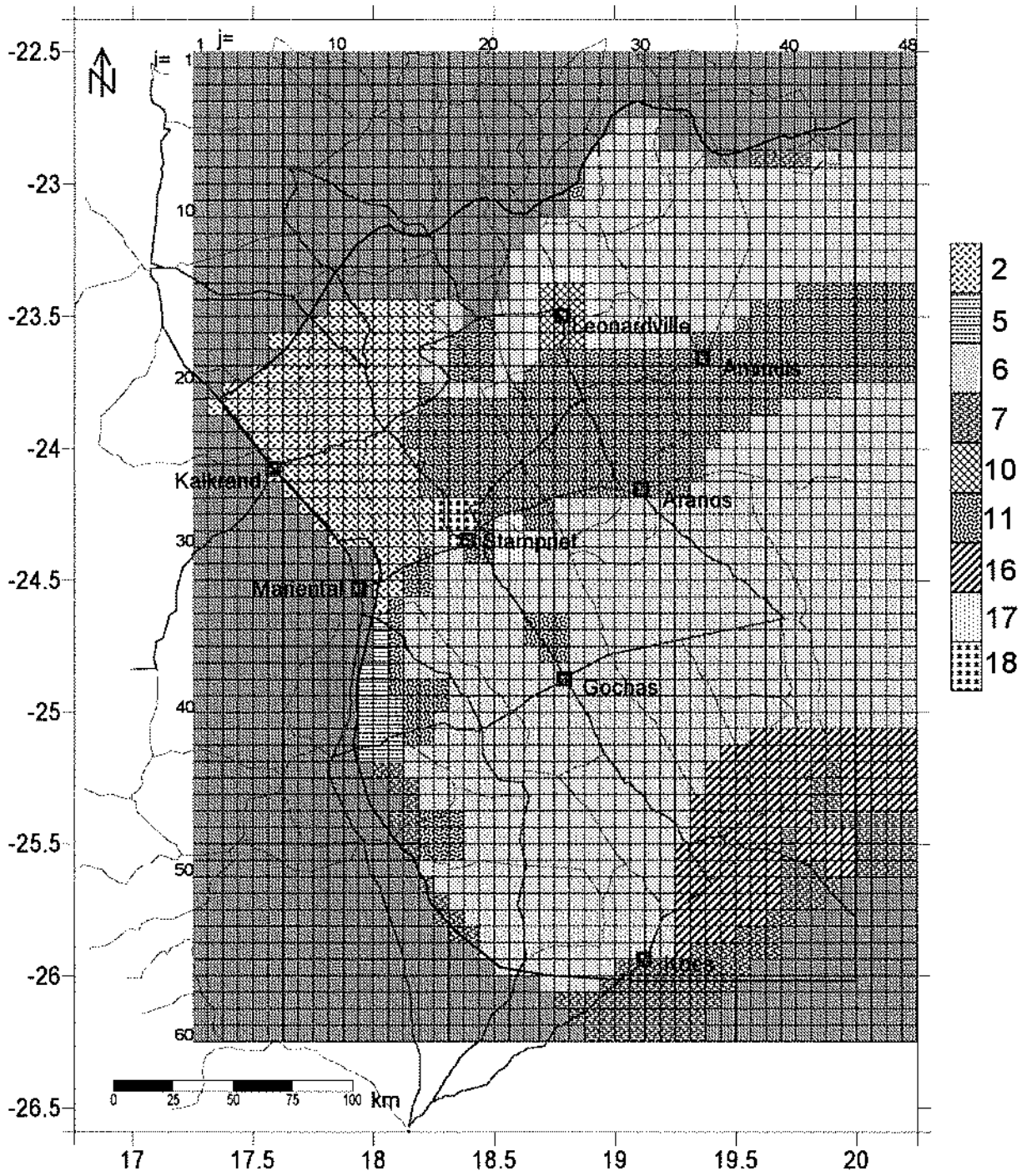


Fig. 12-65 Fixed Hydraulic Conductivity of Model Layer 4
(Zone Number Corresponds to that in Table 12-25)

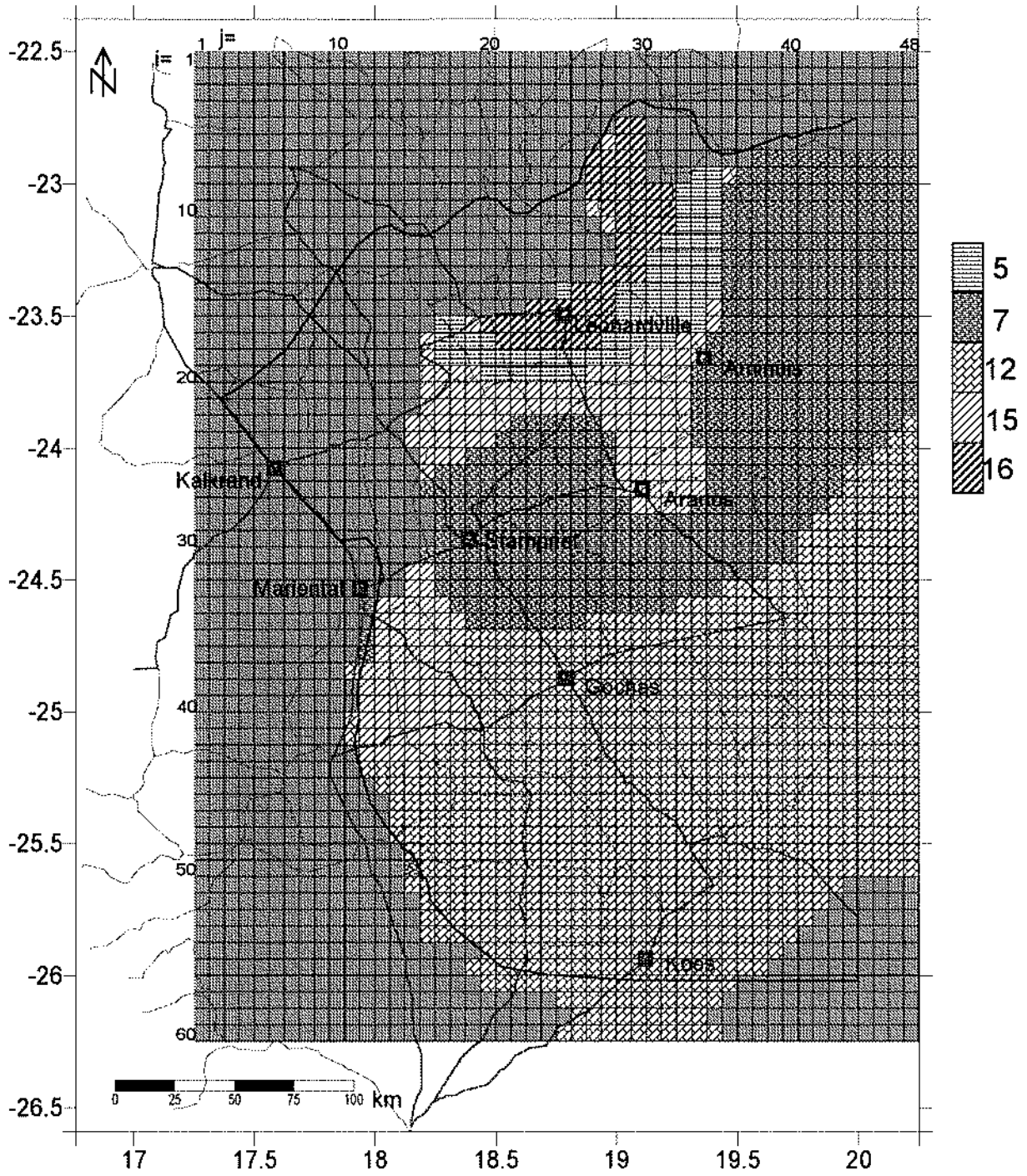


Fig. 12-66 Fixed Hydraulic Conductivity of Model Layer 5
(Zone Number Corresponds to that in Table 12-25)

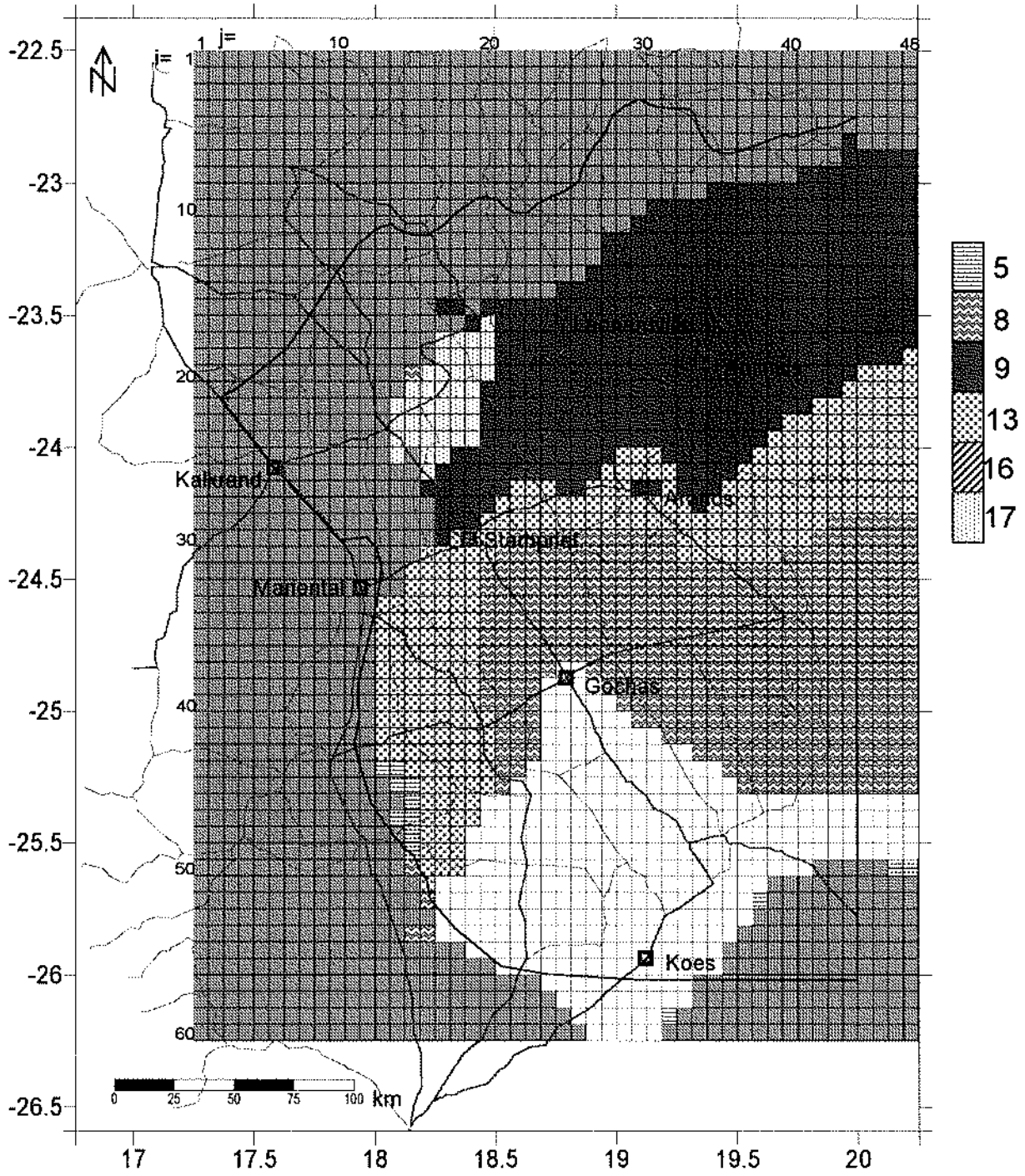


Fig. 12-67 Fixed Hydraulic Conductivity of Model Layer 6
(Zone Numbers Corresponds to that in Table 12-25)

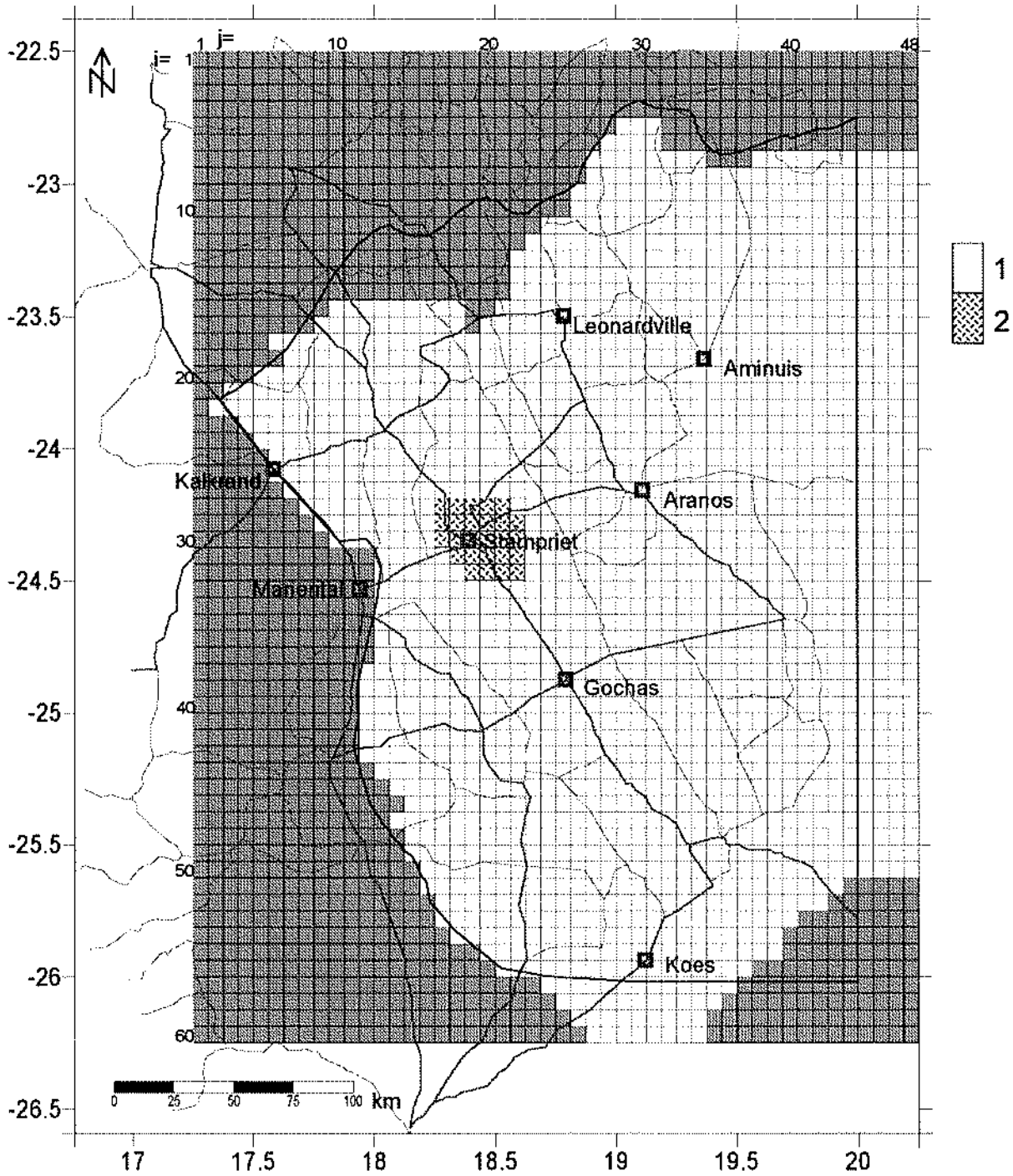


Fig. 12-68 Fixed Specific Storage of Model Layer 4
(Zone Number Corresponds to that in Table 12-25)

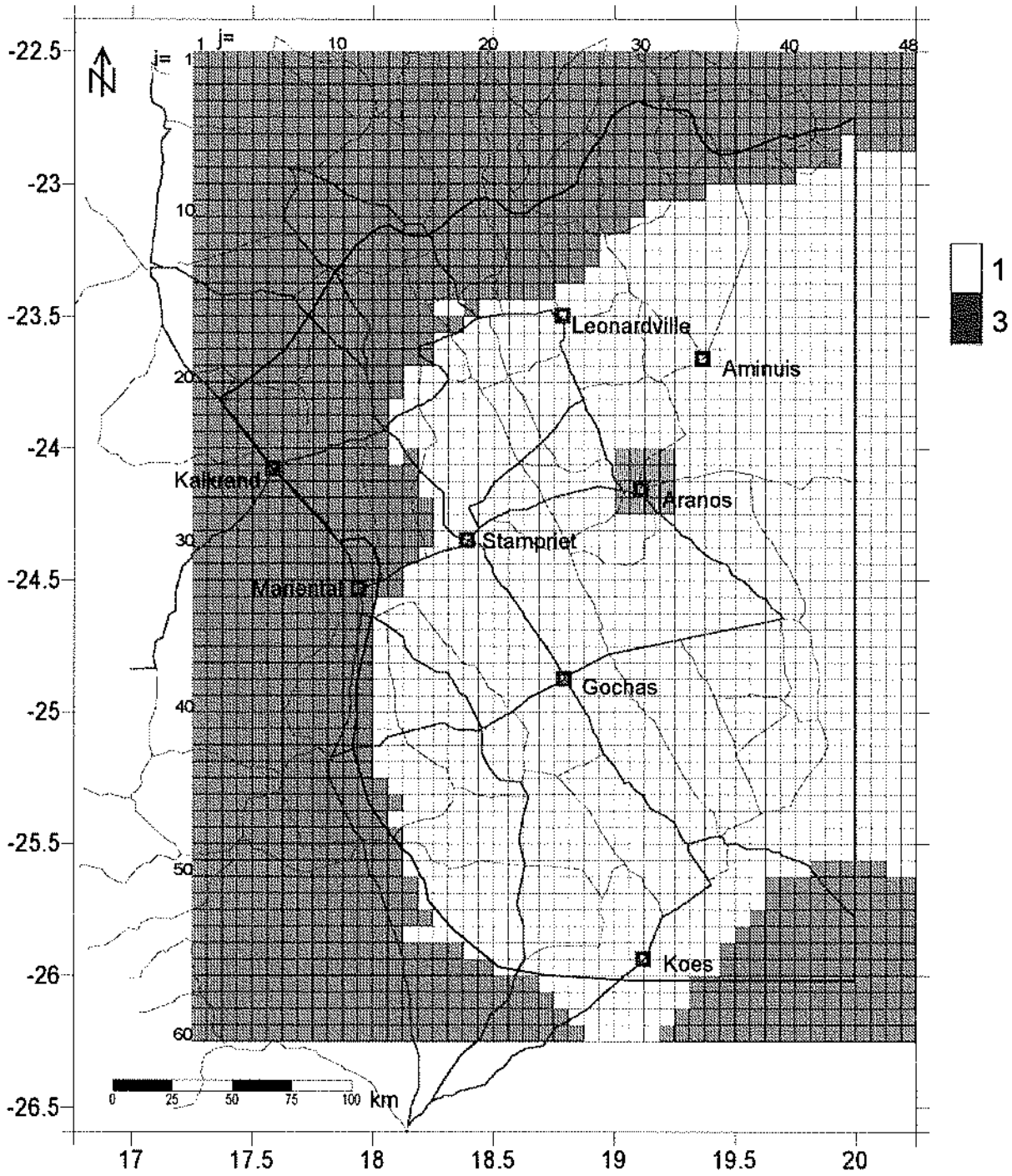


Fig. 12-69 Fixed Specific Storage of Model Layer 6
(Zone Number Corresponds to that in Table 12-25)

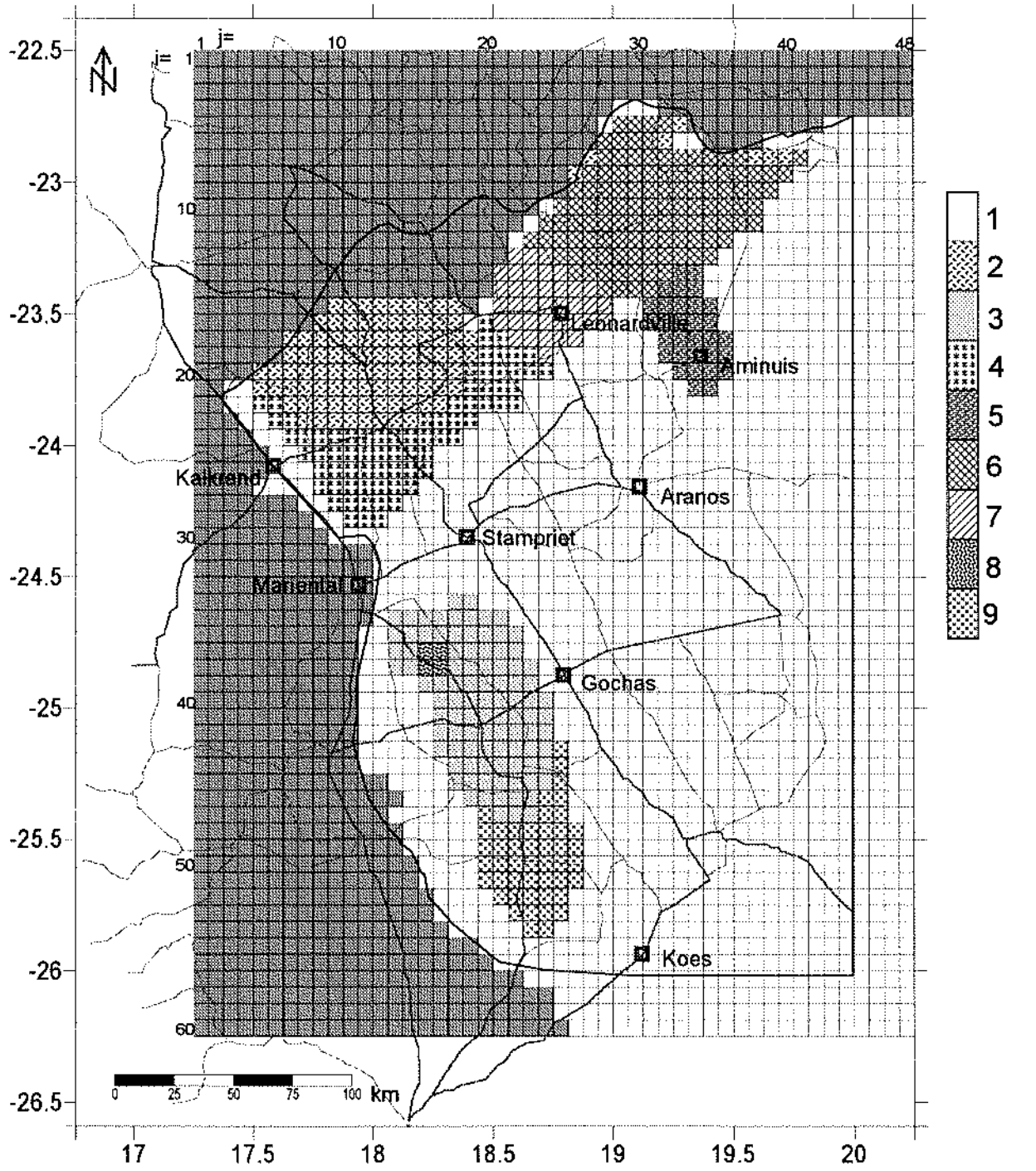


Fig. 12-70 Fixed Recharge Zones
(Zone Number Corresponds to that in Table 12-26)

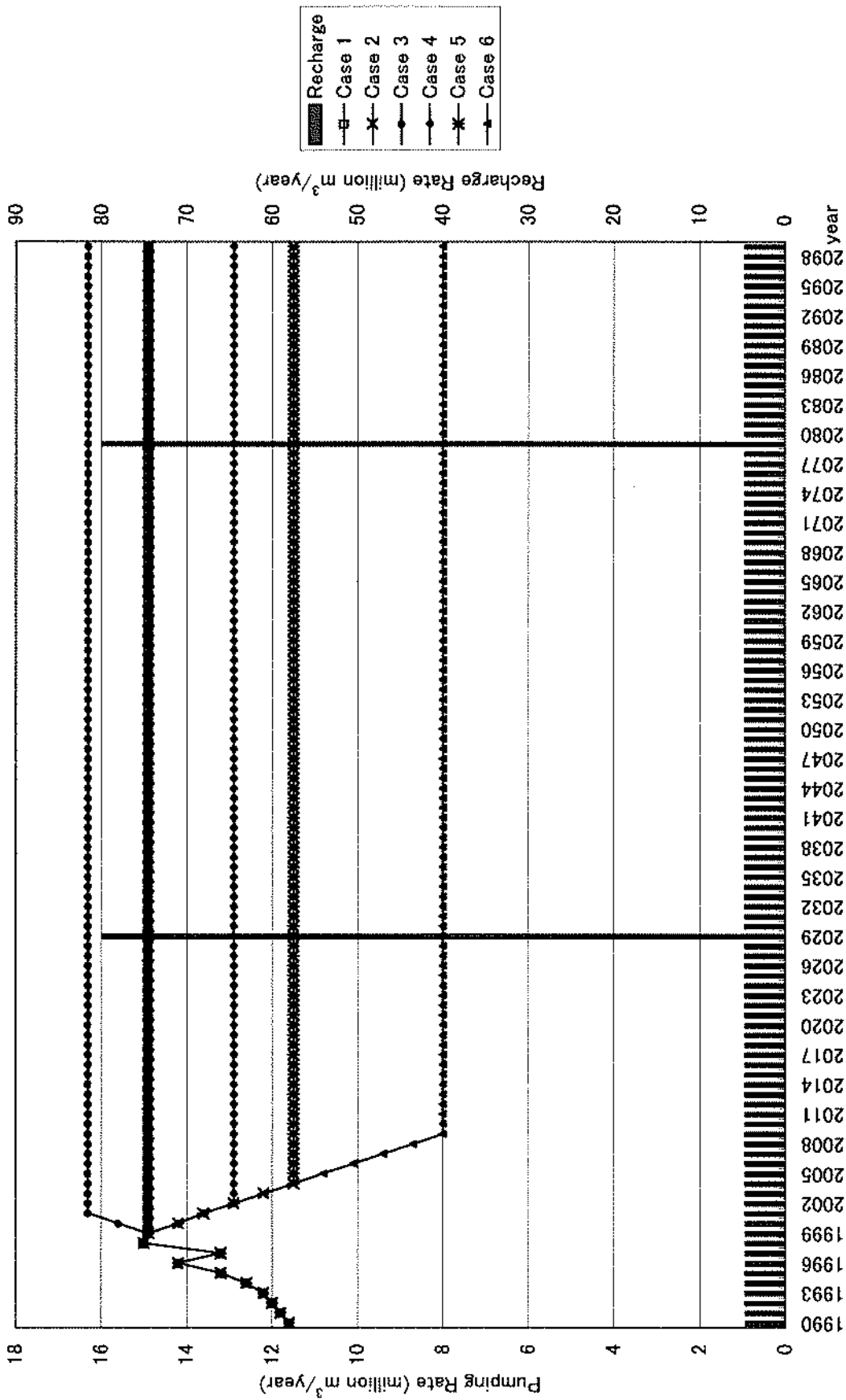


Fig. 12-71 Study Cases of Future Pumping Plan