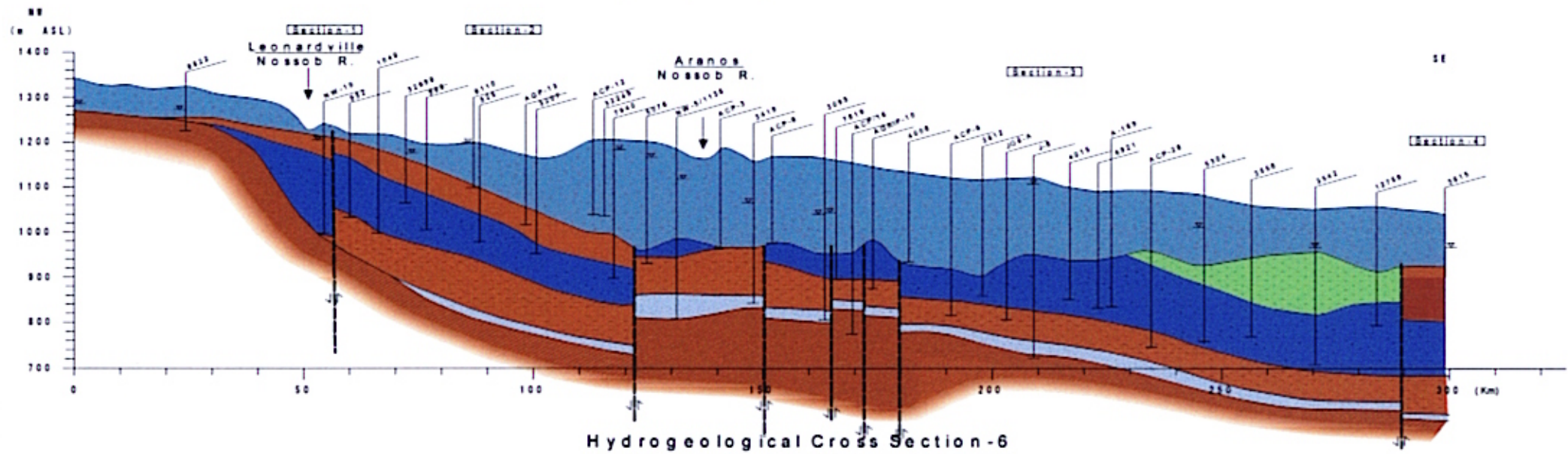
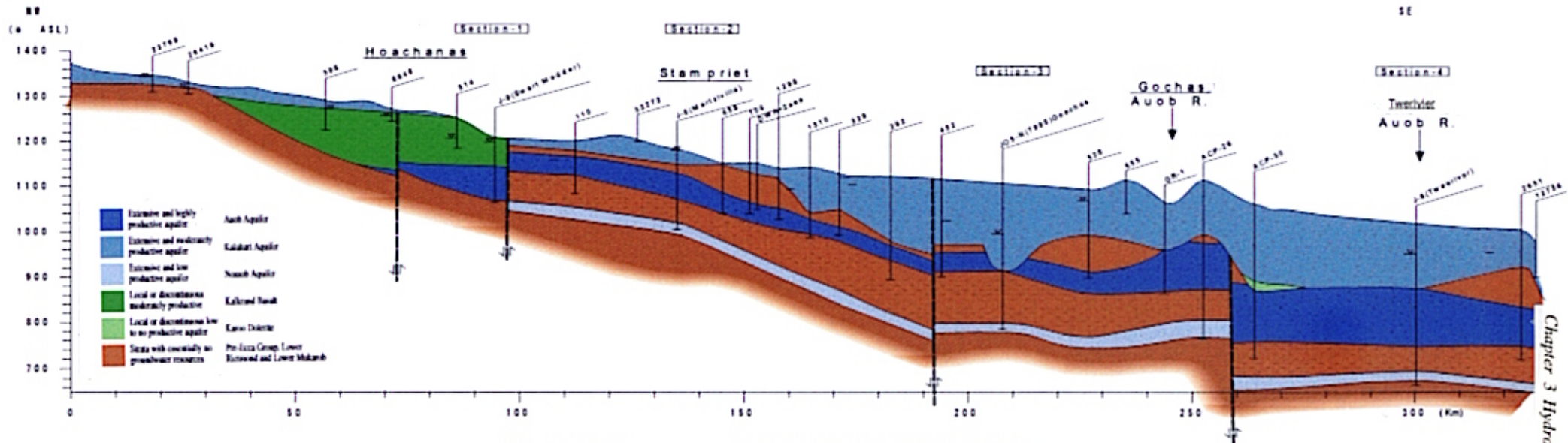


### Hydrogeological Cross Section -5



### Hydrogeological Cross Section -6



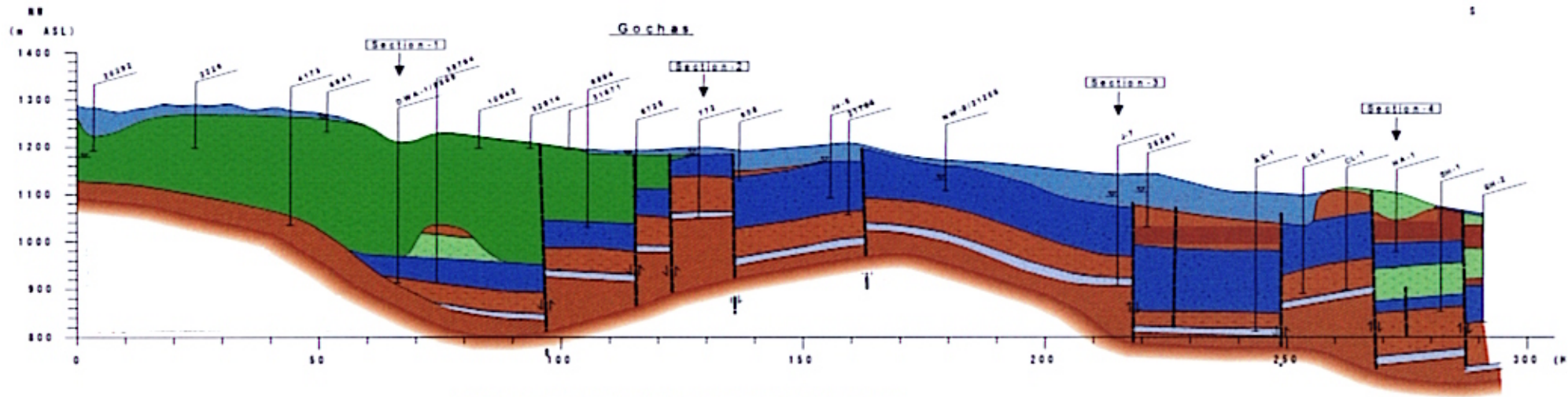
- Extensive and highly productive aquifer: Aquifer A
- Extensive and moderately productive aquifer: Aquifer B
- Extensive and low productive aquifer: Aquifer C
- Local or discontinuous moderately productive: Kalbari Sand
- Local or discontinuous low to no productive aquifer: Karoo Dolerite
- Strata with essentially no groundwater resources: Pre-Ecca Group, Lower Ecca and Lower Makamb

Fig. 3.6-9 (3)

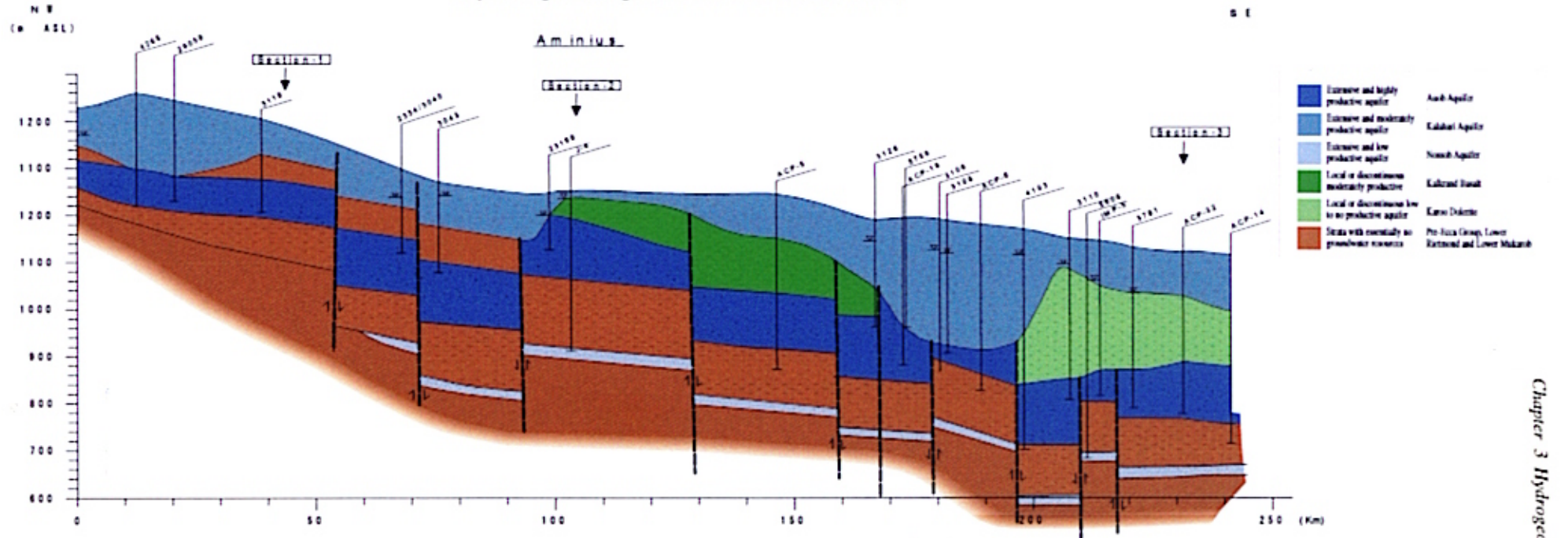
Hydrogeological Cross Section

3-30

### Hydrogeological Cross Section-7



### Hydrogeological Cross Section-8



Dark Blue	Extreme and highly productive aquifer	Amb Aquifer
Medium Blue	Extreme and moderately productive aquifer	Kabul Aquifer
Light Blue	Extreme and low productive aquifer	Nowsh Aquifer
Dark Green	Local or discontinuous moderately productive	Kalkand Sand
Light Green	Local or discontinuous low to no productive aquifer	Karro Dikrite
Brown	Strata with essentially no groundwater resources	Pre-Jura Group, Lower Karakoram and Lower Mikran

Fig. 3.6-9 (4) Hydrogeological Cross Section

3-31

