

**CHAPTER 3. PROJECT EVALUATION AND
RECOMMENDATIONS**

CHAPTER 3. PROJECT EVALUATION AND RECOMMENDATIONS

3-1 Project Effect

3-1-1 Direct Effect

- (1) The Republican Rehabilitation Center annually accepts approximately 1000 handicapped persons (inpatients: 800, outpatients: 200). The proper and prompt rehabilitative services shall be provided to such patients by improvement of the rehabilitative equipment of this Center. The rehabilitation technique of about 56 medical personnel of this facility shall improve by introduction of the new rehabilitation (therapeutic exercise and occupational therapy).
- (2) The Children Rehabilitation Center annually accepts approximately 1100 handicapped persons (inpatients: 600, outpatients: 500). The proper and prompt rehabilitative services shall be provided to such patients by improvement of the rehabilitative equipment of this Center. The rehabilitation technique of about 34 medical personnel of this facility shall improve by introduction of the new rehabilitation (therapeutic exercise and occupational therapy).
- (3) The Sanatorium annually accepts approximately 1000 handicapped persons (inpatients: 1000). The proper and prompt rehabilitative services shall be provided to such patients by improvement of the rehabilitative equipment of this Sanatorium. The rehabilitation technique of about 65 medical personnel of this facility shall improve by introduction of the new rehabilitation (therapeutic exercise and occupational therapy).

3-1-2 Indirect Effect

- (1) The rehabilitative care shall be improved for about 270,000 handicapped

persons among the people of the whole Azerbaijan with a population of about 8 million.

- (2) The Government of Azerbaijan holds up such policy that enables the handicapped persons to perform the daily life activities by self-reliance and to return to society. This project shall support such policy. By promoting the rehabilitation of the handicapped persons in society and stimulating their will to work, their family is relieved from care of the patient, and this may contribute for reinvigoration of the local community.

3-2 Recommendations

In order to implement this project smoothly and use the equipment to be procured more effectively and continuously, recommendation is made for the following points.

- (1) Securing of the medical personnel

Improvement of the rehabilitation technique cannot be achieved only by making arrangements on the hardware (establishments and equipment) side. And, it is indispensable to secure the necessary medical personnel in order to extend more proper and effective rehabilitative services.

- (2) Securing of the budget for operation and maintenance

The necessary budget should be secured for the new facilities and the equipment, because the maintenance costs shall increase after implementation of this project.

- (3) Patients positively accept and join for therapeutic exercises.

The therapeutic exercise brings about pain, because a stiffed joint is forcibly moved. Therefore, it is necessary for the patient to positively accept and join for this exercise.

(4) Introduction of the new rehabilitation (therapeutic exercise and occupational therapy) shall be made in order to proceed smoothly with the improvement plan of rehabilitative services of Azerbaijan. Implementation of the technical support, such as the Soft Component and the counterpart trainings, is expected.

Appendices

1. Member List of the Study Team

1.Members list of the Survey Team

The Basic Design Study on the Project for Improvement
of Rehabilitative Equipment in Rehabilitation Centers in the Republic of Azerbaijan

Basic Design Study Schedule

Mr. Toshiyuki IWAMA	Team Leader	Deputy Director Second Project Management Division, Grant Aid Project Study Department, Japan International Cooperation Agency (JICA)
Ms. Yoshiko TOBIMATSU	Technical Advisor	Associate Professor, Tohoku University Ministry Education, Culture, Sports, Science and Technology
Mr. Tatsuro NAKAJIMA	Project Manager	BINKO LTD.
Mr. Yoshihiro KANEKO	Equipment Planner	BINKO LTD.
Mr. Shigeru OGURA	Facility Planner	Fukunaga Architects Engineers LTD.
Mr. Takahiro KAJIWARA	Cost and Procurement Planner	BINKO LTD.
Mr. Toshio HORIUCHI	Interpreter	BINKO LTD.

Explanation on Draft Report Schedule

Mr. Shinji TOTSUKA	Team Leader	Deputy Director Second Project Management Division, Grant Aid Management Department, Japan International Cooperation Agency (JICA)
Ms. Yoshiko TOBIMATSU	Technical Advisor	Associate Professor, Tohoku University Ministry Education, Culture, Sports, Science and Technology
Mr. Tatsuro NAKAJIMA	Project Manager	BINKO LTD.
Mr. Yoshihiro KANEKO	Equipment Planner	BINKO LTD.
Mr. Takahiro KAJIWARA	Cost and Procurement Planner	BINKO LTD.
Mr. Toshio HORIUCHI	Interpreter	BINKO LTD.

2. Study Schedule

2.Itinerary of the Survey Team

1	Team Leader	10DAYS
2	Technical Advisor	12DAYS
A	Project Manager	28DAYS
B	Equipment Planner	28DAYS
C	Facility Planner	22DAYS
D	Cost & Procurement Planner	22DAYS
E	Interpreter	28DAYS

NO	DATE	WEEK	ACTIVITIES	MEMBER							
				1	2	A	B	C	D	E	
1	29-Sep	SAT	NARITA→LONDON(BA008)13:05~17:40			○	○	○	○	○	○
2	30-Sep	SUN	LONDON→BAKU(BA6723)14:00~23:25			○	○	○	○	○	○
3	1-Oct	MON	AM: Courtesy call on Embassy of Japan PM: Courtesy call on Ministry of Economic Development/Ministry of Labor and Social Protection of Population			○	○	○	○	○	○
4	2-Oct	TUE	Republican rehabilitation center/Children Rehabilitation Center(Under Construction)			○	○	○	○	○	○
5	3-Oct	WED	Sanatorium(Under Construction)			○	○	○	○	○	○
6	4-Oct	THU	Republican rehabilitation center			○	○	○	○	○	○
7	5-Oct	FRI	Meeting at Republican rehabilitation center Discussion in Relative Rehabilitation Facilities of MOH, Visit to Proteese Center in Baku			○	○	○	○	○	○
8	6-Oct	SAT	Meeting at Republican rehabilitation center			○	○	○	○	○	○
9	7-Oct	SUN	FRANKFURT(LH)→20:05BAKU Group Meeting, Visit to Ministry of Labor and Social Protection of Population		○						
10	8-Oct	MON	Republican rehabilitation center, Children Rehabilitation Center, Sanatorium Survey for Agent of Medical Equipments		○	○	○	○	○	○	○
11	9-Oct	TUE	NARITA→FRANKFURT(LH) Republican rehabilitation center Survey for Agent of Medical Equipments	○							○
12	10-Oct	WED	BAKU(6:25) AM: Courtesy call on Embassy of Japan/Ministry of Labor and Social Protection of Population PM: Visit to An old people's home Republican rehabilitation center Survey for Agent of Medical Equipments	○							○
13	11-Oct	THU	AM: Republican Hospital (Under MOH) PM: Health Post, World Bank, etc. Republican rehabilitation center	○	○						○
14	12-Oct	FRI	AM: Discussion in Ministry of Labor and Social Protection of Population PM: Children, Maternity Hospital (Under MOH) Republican rehabilitation center Survey for Transportation	○	○						○
15	13-Oct	SAT	Documentation, Team Meeting	○	○	○	○	○	○	○	○
16	14-Oct	SUN	Team Meeting	○	○	○	○	○	○	○	○
17	15-Oct	MON	Discussion in Ministry of Labor and Social Protection of Population for Minutes	○	○						○
18	16-Oct	TUE	Minutes of Discussions/Report to Embassy of Japan	○	○						○
19	17-Oct	WED	BAKU(LH613/4:15)→FRANKFURT(JL408/20:50)→ Republican rehabilitation center, Discussion in Ministry of Labor and Social Protection of Population for Minutes	○	○						○
20	18-Oct	THU	→NARITA(14:55) Survey for construction company	○	○						○
21	19-Oct	FRI	Republican rehabilitation center BAKU(BA6724/10:30) →LONDON(BA007/15:45)→			○	○				○
22	20-Oct	SAT	Survey for Agent, Maintenance center of MOH →NARITA(11:30)			○	○				○
23	21-Oct	SUN	Team Meeting			○	○				○
24	22-Oct	MON	Meeting at Republican rehabilitation center			○	○				○
25	23-Oct	TUE	Discussion in Ministry of Labor and Social Protection of Population			○	○				○
26	24-Oct	WED	Report to Embassy of Japan			○	○				○
27	25-Oct	THU	BAKU(BA6726/12:05) →LONDON(BA007/15:45)→NARITA			○	○				○
28	26-Oct	FRI	NARITA(11:30)			○	○				○

Itinerary of the Survey Team (Draft Report)

1	Team Leader(JICA/Mr. TOTSUKA)	11DAYS
2	Technical Advisor(Ms.TOBIMATSU)	9DAYS
A	Project Manager(MR.NAKAJIMA)	20DAYS
B	Equipment Planner(Mr.KANEKO)	20DAYS
D	Cost & Procurement Planner(Mr.KAJIWARA)	20DAYS
E	Interpreter(Mr.HORIUCHI)	20DAYS

NO	DATE	WEEK	ACTIVITIES	MEMBER					
				1	2	A	B	D	E
1	9-Jan	WED	NARITA(JL407/13:30)→FRANKFURT(17:35) NARITA(LH711/10:50)→FRANKFURT(14:45)	○					
2	10-Jan	THU	FRANKFURT(LH612/14:10)→BAKU(21:35)	○		○	○	○	○
3	11-Jan	FRI	AM:Courtesy call on Embassy of Japan, Discussion in Ministry of Labor and Social Protection of Population PM:Courtesy call on Cabinet of Ministers	○		○	○	○	○
4	12-Jan	SAT	Republican rehabilitation center NARITA(JL407/13:30)→FRANKFURT(17:35)	○		○	○	○	○
5	13-Jan	SUN	Documentation FRANKFURT(LH612/14:10)→BAKU(21:35)	○		○	○	○	○
6	14-Jan	MON	Republican rehabilitation center	○	○	○	○	○	○
7	15-Jan	TUE	Discussion in Ministry of Labor and Social Protection of Population for Minutes	○	○	○	○	○	○
8	16-Jan	WED	AM:Republican rehabilitation center PM:Minutes of Discussions	○	○	○	○	○	○
9	17-Jan	TUE	Report to Embassy of Japan,Seminar of Prof. TOBOMATSU	○	○	○	○	○	○
10	18-Jan	FRI	BAKU(BA6726/10:50)→(13:05)LONDON(JL402/19:00)→ Survey for Soft Component	○		○	○	○	○
11	19-Jan	SAT	→NARITA(15:45) BAKU(BA6728/9:40)→(11:55)LONDON(BA007/14:10)→ Site Survey	○		○	○	○	○
12	20-Jan	SUN	Documentation →NARITA(11:00)			○	○	○	○
13	21-Jan	MON	Republican rehabilitation center Survey of local agent			○	○	○	○
14	22-Jan	TUE	Republican rehabilitation center			○	○	○	○
15	23-Jan	WED	Republican rehabilitation center/Report to Ministry of Labor and Social Protection of Population Survey of local agent			○	○	○	○
16	24-Jan	TUE	Republican rehabilitation center			○	○	○	○
17	25-Jan	FRI	Report to Embassy of Japan,Ministry of Labor and Social Protection of Population			○	○	○	○
18	26-Jan	SAT	Site Survey			○	○	○	○
19	27-Jan	SUN	BAKU(BA6726/17:00)→(19:00)			○	○	○	○
20	28-Jan	MON	LONDON(VS900/13:00)→			○	○	○	○
21	29-Jan	TUE	NARITA(10:00)			○	○	○	○

3. List of Parties Concerned in the Recipient Country

3.List of Parties concerned in the Recipient Country

Organization	Title	Name
Embassy of Japan in Azerbaijan		
	Second Secretary	Toshikazu Muto
Cabinet of Ministers		
	Vice Prime-Minister	Sharikhov Abid
	Deputy Head of Division	Fataliev Nail
Ministry of Labour and Social Protection of Population		
	Minister	Ali Nagiyev
	Deputy Minister	Tahir Budagov
	Expertise and Rehabilitation of Disabled People Department	Telman Kazimov
	Chief of Construction Department	Imanov Oktay Gamyä Oglu
	Head of the international Cooperation Department	Yashar Hamzayev
	Head of the Disabled People Rehabilitation Department	Shaban Eyvazov
	Ophthalmologist of the Center of Medical and Expertise Center	ElchinVadirov
	Director of employment policy and demography Department	Vahab Mamedov
Republican Rehabilitation Center		
	Director of the Republican Rehabilitation Center	Elchin Huseynov
	Functional-Diagnost	Yakub Mamedov
	Head of Functional Diagnostic Department	Elmira Aliyeva
	Head of Physiotherapy and Psychological	Almaz Ibrahimova
	Head of Medical and Social Rehabilitation	Malahat Nakhmedova
	X-ray Doctor	Mudawed Amradov
	Laboratoriant-doctor	Meheibau Mledtiyeva
	Dentist	Arzu Askezov
	Chief of Medical-Social rehabilitation Department	Matahat Nahmedova
	Deputy Chier Doctor in Charge of Economical Matters	Bunyadov Ramiz Gusein
Republican Prosthetic Orthopedics center		
	Director of Republican Prosthetic Orthopedics center	Shahin Mamedov
	Chief Doctor	Shamsaddin Khudaverdiyev
Sanatorium		
	Chief Engineer of Azergidrometeostroyremont (Construction Company)	Daolashov Ali Mustafa Oglu
Ministry of Economical Development		
	Director of Departmenrt of investments and International Economical Cooperation	Seyidzade Ulvi
	Deputy Director of Department of investments and International Economical Cooperation	Mehman Abasov
	Division of International Economic Organizations, Specialist	Ayaz Gadirov
	Division of Investment Policy, Head Specialist	Eldoz Salahov
	Division of International finance Cooperation	Yusef Heydarov
Rehabilitation Center of MOH		
	Director	Musayev Alishir Veys
Children Rehabilitation Center of MOH		
	Director	Nurlana Hasanova

4. Minutes of Discussion

MINUTES OF DISCUSSIONS
ON THE BASIC DESIGN STUDY
ON THE PROJECT FOR IMPROVEMENT OF
REHABILITATIVE CARE IN REHABILITATION CENTERS
IN THE AZERBAIJAN REPUBLIC

In response to a request from the Government of Azerbaijan Republic (hereinafter referred to as "Azerbaijan"), the Government of Japan decided to conduct a basic design study on The Project for Improvement of Rehabilitative Care in Rehabilitation Centers (hereinafter referred to as "the Project") and entrusted the study to the Japan International Cooperation Agency (hereinafter referred to as "JICA").

JICA sent to Azerbaijan the Basic Design Study Team (hereinafter referred to as "the Team"), which is headed by Mr. Toshiyuki Iwama, Deputy Director of Second Project Management Division, Grant Aid Department, JICA, and is scheduled to stay in the country from September 30 to October 25, 2001.

The Team held discussions with the officials concerned of the Government of Azerbaijan and conducted a field survey.

In the course of discussions and field survey, both parties confirmed the main items described on the attached sheets. The Team will proceed to further works and prepare the Basic Design Study Report.

Baku, October 16, 2001



Mr. Toshiyuki Iwama
Leader
Basic Design Study Team
Japan International Cooperation Agency



Mr. Tahir Budagov
Deputy Minister
Ministry of Labor and Social Protection of
Population
Azerbaijan Republic

ATTACHMENT

1. Goal and Objective of the Project

The goal of the Project is that the disabled people in Azerbaijan become autonomous and independent as much as possible. The Project will contribute to the activities No. 1.1, 1.4, 1.7, 1.11, 1.14, 2.2, 2.7, and 2.15 of the Government Program on Disability Reduction for 1999 – 2002 (Refer to Annex-1). In order to achieve the goal, the objective of the Project is to improve rehabilitative services in the physio, physical, occupational therapy and diagnostic through procurement of equipment and provision of technical support.

2. Project sites

The sites of the Project are the Republican Rehabilitation Center, Sanatorium, and Children Rehabilitation Center in Baku.

3. Responsible and Implementing Agency

The responsible and implementing agency is the Ministry of Labor and Social Protection of Population.

4. Items requested by the Government of Azerbaijan

After discussions with the Team, following components are finally requested by Azerbaijani side.

(1) Equipment as shown in Annex-2

(2) Support to study the current praxis of rehabilitation of disabled people in Japan

(3) Technical support to the therapists at the three Project sites

JICA will prepare the appropriate contents of the Project based on the request and will recommend to the Government of Japan for approval.

5. Japan's Grant Aid Scheme

5-1. Azerbaijani side understands the Japan's Grant Aid Scheme explained by the Team, as described in Annex-3

5-2. Azerbaijani side will take the necessary measures, as described in Annex-4, for smooth implementation of the Project, as a condition for the Japanese Grant Aid to be implemented.

6. Schedule of the Study

6-1. The consultants will conduct further surveys and discussions in Azerbaijan until October 25.

6-2. JICA will prepare the draft report in English and Russian (extract) and dispatch a mission in order to explain its contents around January 2002.

6-3. If the contents of the draft report are accepted in principle by the Government of Azerbaijan, JICA will complete the final report and send it to the Government of Azerbaijan by May 2002.

A handwritten signature and initials in the bottom right corner of the page. The signature appears to be 'JICA' and the initials are 'T'.

7. Other Relevant Issues

7-1. The Team notes that the construction of the Sanatorium has almost been completed and the works on the Children Rehabilitation Center will be finished by May 2002. The Team asks the Azerbaijani side to complete all works as planned and without delay.

7-2. The Grant Aid may cover technical support during the period specified in the Exchange of Notes that is usually one year. If a need arises to continue the technical support, it may be covered by the Technical Cooperation rendered by JICA. However, in such case a separate request for the Technical Cooperation shall be submitted at least one year in advance. The Team recommends the Azerbaijani side to familiarize themselves with the procedure, for which the Embassy of Japan, JICA and the consultants may assist.

A handwritten signature in black ink, appearing to be 'J. H.', followed by a horizontal line and a small mark resembling a checkmark or the number '7'.

**GOVERNMENT PROGRAM
ON DISABILITY REDUCTION AND REHABILITATION
FOR 1999 – 2002**

1. Measures for disability reduction, medico – social expertise and rehabilitation

№	Activity	Executing agency	Date of implementation
1.1	Preparation of basic conception on medical and social support for disables	MOLSPP, Ministry of Health	1999-2000
1.2	Preparation of measures on provision of methodology -scientific, juridical and HR for medico-social experts commission	MOLSPP, Ministry of Health	1999
1.3	Preparation of new criteria on determining of disability for medico-social experts commission	MOLSPP, Ministry of Health	1999-2000
1.4	Upgrading of the quality regarding medical and social support for disables	MOLSPP, Ministry of Health, Ministry of Education	Periodically
1.5	Preparation of basis for organization of medico-social expertise for disabled children	MOLSPP	1999-2000
1.6	Preventive measures for disability reduction as a result of damage of central nervous system at early age of children, infection and other reasons	Ministry of Health, MOLSPP	1999-2000
1.7	Development of medical and social rehabilitation methods for children with cerebral paralysis	MOLSPP, Ministry of Health	1999-2000
1.8	Preparation of methodological background for application of international classification of disabled	MOLSPP, Ministry of Health, State Statistics Committee (SSC)	1999-2000
1.9	Construction of data collection system regarding to disables problems based on unified catalogue	MOLSPP, SSC	1999-2000
1.10	Publication of normative-legislative, science-research, science-methodological information on disabled problems	Ministry of Media and Information, Ministry of Education, MOLSPP, Ministry of Health	1999-2000
1.11	Preparation of programs on rehabilitation of disables	MOLSPP, SSC, Ministry of Education	1999
1.12	Preparation of methodological and organizational basis for medical-social rehabilitation on individual rehabilitation programs for disables	MOLSPP, Ministry of Health, Ministry of Education	1999-2000

[Handwritten signature]

1.13	Preparation and realization of sport programs for disables, including paralympic issues	Ministry of Sport and Youth, MOLSPP, Ministry of Education, Ministry of Education	Periodically
1.14	Preparation of the activities program for rehabilitation center (sport-health) of disables	Ministry of Youth and Sports, State Architecture and Construction Committee, MOLSPP	1999-2000
1.15	Preparation of measures for improving of labour conditions at enterprises, departments and organizations in line with the sanitary-hygiene rules and norms	MoLSPP, MoH	Periodically
1.16	Determining of norms on additional food for people who became disabled as consequence of occupational disease or labour injury	MoH, MoLSPP	1999
1.17	Envisage appropriate conditions for disabled in tripartite field (tariff) agreements and contracts	Relevant executive agency	Periodically
1.18	Preparation of conception for rehabilitation of people who became disabled while defending the territorial integrity of Republic of Azerbaijan	MOLSPP, Ministry of Health, Ministry of Education, Ministry of Defense, Ministry of Youth and Sports	1999-2000
1.19	Preparation of measures for constant process on continuous education of disabled people	Ministry of Education, MOLSPP, Ministry of Health	1999
1.20	Preparation of medico-social criteria for employability of disabled	Ministry of Education, MOLSPP, Ministry of Health	1999
1.21	Preparation of tests for evaluation of vocational capability of disabled	Ministry of Education, MOLSPP, Ministry of Health	1999
1.22	Determining a need for specialists in medico-social expertise and rehabilitation services for disabled	MOLSPP, Ministry of Health, Ministry of Education	Periodically
1.23	Studies of international practice, organization of conferences and relevant measures for establishment of necessary conditions of life and activity for disabled	MOLSPP	Periodically

Handwritten signature and initials, possibly 'J. J.' or similar, located at the bottom right of the page.

2. Measures related to solution of medical, social and other problems for disabled

№	Activity	Executing agency	Date of implementation
2.1	Establishment of unified information system for disabled and on organization of statistical observations on demographic profile and socio-economic situation of disabled, including disabled children	Cabinet of Ministers	1999
2.2	Upgrading the system of specialized medical service for disabled at the Government medical institutions	Ministry of Health, Ministry of Finance	Periodically
2.3	Provision of free and privileged drugs supply for disabled envisaged in the legislation	Ministry of Health, Ministry of Finance, MOLSP	Periodically
2.4	Provision of free and privileged use of sanatorium and health resort services by disabled	MOLSP, Ministry of Health, Ministry of Finance	Periodically
2.5	Provision of employment for disabled according to the legislation quota	MOLSP	Periodically
2.6	Establishment of rehabilitation centers in Ganja, Nakichevan, Lenkoran, Ali-Bayramli, Sheki, Sumgayit	MOLSP, Ministry of Health, Ministry of Education, Ministry of Finance, Local authorities	2000-2002
2.7	Establishment of children rehabilitation center in Baku	MOLSP, Ministry of Finance, Ministry of Health, Ministry of Education, Local authorities	1999-2000
2.8	Establishment of a center for rehabilitation of war disabled	Ministry of Health, Ministry of Finance, State Committee on Construction and Architecture	2000-2001
2.9	Establishment of pilot-rehabilitation centers for disabled in Baku and Nakhchivan	MOLSP, Local Authorities	1999-2000
2.10	Construction of trade centers in Baku, Nakhchivan and Ganja where the disabled would be employed	MOLSP, Ministry of Finance, State Construction and Architecture Committee	2000
2.11	Measures on setting up of equipment in public transport and places necessary for well functioning of disabled and preparation of related norms (standards) and adoption of other	State Construction and Architecture Committee, State Standard and	1999-2000

	documents as well.	Metrology Center, MOLSPP	
2.12	Determining the norms and rules for establishment of necessary conditions for well functioning of disabled while constructing houses and designing of equipment	State Construction and Architecture Committee, State Standard and Metrology Center, MOLSPP	1999-2000
2.13	Provision of disabled with prosthesis, wheelchairs, other rehabilitation facilities including hearing-aid units, literature in Brail font, ARGO –orthopedic facilities	MOLSPP, Ministry of Finance	Periodically
2.14	Provision of cars for war disables	MOLSPP, Ministry of Finance	Periodically
2.15	Improving of material-technical basis of Republican Rehabilitation Center, treatment sanatoriums and board houses for disabled	MOLSPP, Ministry of Finance	2000
2.16	Provision of necessary information for disabled with hearing and seeing disabilities	State TV and Radio Broadcasting Company, Ministry of Information and Communication, MOLSPP	Periodically
2.17	Provision of subtitles for TV programs which enlightens the theme of public integration of disabled. Production of cinema and video films with subtitles	State TV and Radio Broadcasting Company, Ministry of Information and Communication, MOLSPP, Ministry of Culture	1999-2000
2.18	Provision of surdo-interpretation for informational TV programs for people with hearing disability. Production of publicistic, scientific-mass TV-radio programs.	State TV and Radio Broadcasting Company, Ministry of Information and Communication, MOLSPP, Ministry of Education, Ministry of Culture	1999-2000
2.19	According to legislation, provision of privileges on telecommunications and for disables with wheelchairs establishment of telephones in the streets	Ministry of Telecommunications, Local Authorities	1999-2000
2.20	Establishment of kindergartens for pre-school blind children and attraction of blind children to specialized school with Brail education system	Ministry of Education, Ministry of Health, MOLSPP	1999-2000
2.21	Rehabilitation of hearing ability, opening of special groups at kindergartens aimed better	Ministry of Education,	1999-2001

	preparation for the school, provision of surdological units for deaf children with pre-school age	MOLSPP, Ministry of Health	
2.22	Establishment of medico-pedagogical and psychological advice centers for parents of under-developed children	Ministry of Education, Ministry of Finance, Ministry of Health, MOLSPP	1999-2000
2.23	Provision of specialized study books for children with hearing and seeing disabilities	Ministry of Education, Ministry of Information and Communication,	1999-2000
2.24	Provision of employment for qualified people with eye disability at medical and cultural centers	Ministry of Health, Ministry of Culture, Ministry of Finance, MOLSPP	Periodically
2.25	Realization of measures to strengthen social protection of disabled especially alone disabled who need care and assistance	MOLSPP	Periodically
2.26	Realization of measures aimed at providing addressed social assistance to families with two or more disabled persons living with them	MOLSPP	Periodically
2.27	Establishment of sport-health centers for disabled	Ministry of Youth and Sports, Ministry of Education, Ministry of Finance, State Construction and Architecture Committee, Local Authorities	1999-2001
2.28	Preparation and realization of programs for participation of disabled sportsmen in international and local sport competitions	Ministry of Youth and Sports, MOLSPP, Ministry of Finance, Local Authorities	Periodically



7.

Equipment list

Item No.	Description	Republicoan rehabilitation center in Baku			Sanatorium			Children Rehabilitation Center		
		Requested Q'ty	Priority		Request ed Q'ty	Priority		Requeste d Q'ty	Priority	
			A	C		A	C		A	C
	Dignostic									
D-1	X-ray Unit	2	2	0	1	1	0	2	1	1
D-2	Ultrasound Scanner	3	1	2	1	0	0	2	0	1
D-3	Electrocardiograph	2	1	1	1	1	0	3	1	2
D-4	Electroencephalograph	2	1	1	1	1	1	1	1	0
D-5	Reograph	2	1	1	1	0	1	2	0	1
D-6	Spirometer	5	1	4	1	1	0	3	2	1
D-7	Spectrophotometer	1	1	0	1	1	0	1	1	0
D-8	EMG	1	1	0	1	1	0	1	1	0
D-9	Portable Defibrillator	1	1	0	1	1	0	1	1	0
D-10	Hot Air sterilizer	1	1	0	1	1	0	1	1	0
D-13	Car for disabled person	1	1	0	1	0	0	1	0	0
D-14	Dark room equipment for X-ray	-	1	0	-	1	0	-	1	0
	Dental									
D-11	Dental Unit	1	1	0	0	1	0	0	1	0
D-12	Dental X-ray	1	1	0	0	1	0	0	1	0
D-15	Dental tretment equipment	-	1	0	-	1	0	-	1	0
	PHYSIOTHERAPY									
P-1	Electric traction	1	1	0	-	1	0	-	1	0
P-2	Low Frequency Therapy	2	2	0	2	2	0	2	2	0
P-3	Interferential Therapy	2	2	0	2	2	0	2	2	0
P-4	Microwave Therapy	2	2	0	2	2	0	2	2	0
P-5	Shortwave Therapy	2	2	0	2	2	0	2	2	0
P-6	Ultrasound Therapy	2	2	0	2	2	0	2	2	0
P-7	Ultraviolet & Interfered	2	0	2	2	0	2	2	0	2
P-8	Interfared lamp	2	2	0	2	2	0	2	2	0
P-9	Ultraviolet Lamp	2	2	0	2	2	0	2	2	0
P-10	Treatment Table	5	7	0	5	7	0	5	7	0
P-11	Paraffin Bath	2	2	0	2	2	0	2	2	0
P-12	Hot Pack Unit	2	2	0	2	2	0	2	2	0
P-13	Pack Wagon	2	2	0	2	2	0	2	2	0
P-14	Low Frequency & Electroheat pack Therapy unit	4	2	2	4	2	2	4	2	2
P-15	Automatic Air Massager Medomer	4	0	4	4	0	4	4	0	4
P-16	Infrared Ray Energy and Thermal Stimulation star Beam	5	1	4	5	1	4	5	1	4
P-17	Ultrasound Unit, Two Channel Desktop	5	0	5	5	0	5	5	0	5
	THERPEUTIC EXERCISE									
T-1	Multi Station with Wire Net	1	1	0	1	1	0	1	1	0
T-2	Training Bed	5	2	3	5	2	3	5	2	3
T-3	Rotary Wrist Machine	1	0	1	1	0	1	1	0	1
T-4	Wrist Roll	1	0	1	1	0	1	1	0	1
T-5	Shoulder Wheel	1	1	0	1	1	0	1	1	0
T-6	Shoulder Ladder, Bent	1	0	1	1	0	1	1	0	1
T-7	Chest pulley	1	0	1	1	0	1	1	0	1
T-8	Wall stall Bars	4	4	0	4	4	0	4	4	0
T-9	Curved Back Board Exerciser	1	0	1	1	0	1	1	0	1
T-10	Bicycle Exerciser	3	3	0	3	3	0	3	3	0
T-11	Restator	1	0	1	1	0	1	1	0	1
T-12	Lower Limb Extension & Exerciser Chair	1	0	1	1	0	1	1	0	1
T-13	Quadriceps Table	1	0	1	1	0	1	1	0	1

Item No.	Description	Republican rehabilitation center in Baku			Sanatorium			Children Rehabilitation Center		
		Requested Q'ty	Priority		Requested Q'ty	Priority		Requested Q'ty	Priority	
			A	C		A	C		A	C
T-14	Ankle & Leg Exerciser	1	0	1	1	0	1	1	0	1
T-15	Rowing Machine	1	0	1	1	0	1	1	0	1
T-16	Electric Tilt Table	1	0	1	1	0	1	1	0	1
T-17	Parallel Bars	2	1	1	2	1	1	2	1	1
T-18	Posture Training Mirror	1	2	0	1	2	0	1	2	0
T-19	Curb Blocks	2	2	0	2	2	0	2	2	0
T-20	Exercise Stairs	1	1	0	1	1	0	1	1	0
T-21	Mat Platform	2	2	0	2	2	0	2	2	0
T-22	Training Mat	10	10	0	10	10	0	10	10	0
T-23	Dumbbell with Rack	2	2	0	2	2	0	2	2	0
T-24	Musclematic Weight	2	2	0	2	2	0	2	2	0
T-25	Cart for Musclematic weight	1	1	0	1	1	0	1	1	0
T-26	Remover	5	0	5	5	0	5	5	0	5
T-27	Ankle Exercise Sandal with Bar	4	4	0	4	4	0	4	4	0
T-28	Alternate Traction Pyller Exerciser	4	2	2	4	2	2	4	2	2
T-29	Sling & spring Suspension	4	2	2	4	2	2	4	2	2
T-30	Holding Mitt	4	4	0	4	4	0	4	4	0
T-31	Ankle Exercise Cuff	5	3	2	5	3	2	5	3	2
T-32	Mat Platform	15	0	15	15	0	15	15	0	15
T-33	Musclematic Weight	5	0	5	5	0	5	5	0	5
T-34	Expander	10	0	15	10	0	10	10	0	10
T-35	Barbell	5	0	5	5	0	5	5	0	5
T-36	Timer	10	6	4	10	6	4	10	6	4
T-37	Medicine Ball	10	2	8	10	2	8	10	0	10
T-38	Medicine Ball	10	0	10	10	0	10	10	0	10
T-39	Tilt Table, Child	-	-	-	-	-	-	-	2	0
T-40	Parallel Bars, Child	-	-	-	-	-	-	-	2	0
T-41	Exercise Stairs, Child	-	-	-	-	-	-	-	2	0
T-42	Wedge	-	-	-	-	-	-	-	1	0
T-43	Peg Board Set	-	-	-	-	-	-	-	0	0
T-44	Bubble Ball Bath	-	-	-	-	-	-	-	1	0
T-45	Rolls	-	-	-	-	-	-	-	1	0
T-46	Barrel Roll	-	-	-	-	-	-	-	2	0
T-47	Rocker Balance	-	-	-	-	-	-	-	2	0
T-48	Training Ball	-	-	-	-	-	-	-	1	0
T-49	Maintenance Kit	-	-	-	-	-	-	-	2	0
T-50	Deck Quoits	-	-	-	-	-	-	-	2	0
T-51	Tool set for perception and congition	-	-	-	-	-	-	-	1	0
T-52	Toy set for infants	-	-	-	-	-	-	-	1	0
OCCUPATIONAL THERAPY										
O-1	Sanding Exerciser	1	0	1	2	0	2	2	0	2
O-2	Stanting Table	1	2	0	2	2	0	2	0	2
O-3	Hydraulic Work Table	1	2	0	2	2	0	2	2	0
O-4	Electric Jig Saw	2	0	2	2	0	2	2	0	2
O-5	Weaving Machine	2	0	2	2	0	2	2	0	2
O-6	Wood Work Training Set	3	0	3	3	0	3	3	0	3
O-7	Treadle Jig Saw	4	0	4	4	0	4	4	0	4
O-8	LeatherCraft Set	5	0	5	5	0	5	5	0	5
O-9	Octagon work Table	3	0	3	3	0	3	3	0	3
HYDRO THERAPY										
H-1	Bath with lift	2	2	0	2	2	0	2	2	0
H-2	Whirlpool Bath for Full Body	2	2	0	2	2	0	2	2	0

Item No.	Description	Republican rehabilitation center in Baku			Sanatorium			Children Rehabilitation Center		
		Requested Q'ty	Priority		Requested Q'ty	Priority		Requested Q'ty	Priority	
			A	C		A	C		A	C
H-3	Whirlpool Bath for Arms&Legs	1	1	1	2	1	1	2	1	1
H-4	Hydro Bubbler for full Body	1	0	1	2	0	1	2	0	2
H-5	Bubbler	4	4	0	4	4	0	4	4	0
H-6	Pressure hose set	-	1	0	-	-	-	-	-	-
EVALUATION										
E-1	Forward Flexmeter	4	2	2	4	2	2	4	2	2
E-2	Weight Measure	5	4	1	5	4	1	5	4	1
E-3	Height Measuring Gauge	5	4	1	5	4	1	5	4	1
E-4	Hand Evaluation Set	5	0	5	5	0	5	5	0	5
E-5	Goniometer Set	10	2	8	10	2	8	10	2	8
E-6	Digital Hemadinamometer	20	15	5	20	15	5	20	15	5
E-7	Spirometer	10	3	7	10	3	7	10	3	7
E-8	Peg Board(Set of)	5	3	2	5	3	2	5	3	2
E-9	Step Simple Test for Evaluating Hand Function	5	3	2	5	3	2	5	3	2
E-10	Dynamometer	-	2	0	-	2	0	-	2	0
POSITIONING										
PO-1	Wedge	3	0	3	3	0	3	3	0	3
PO-2	Walker	10	10	0	10	10	0	10	10	0
PO-3	Infant Walker	10	0	10	10	0	10	10	0	10
PO-4	Invalid Walkers	10	5	5	10	5	5	10	5	5
PO-5	Walkerette for child	-	-	-	-	-	-	-	5	0
PO-6	Fixed Walker for child	-	-	-	-	-	-	-	5	0
PO-7	Forarm Crutch for child	-	-	-	-	-	-	-	10	0
PO-8	Crutch for child	-	-	-	-	-	-	-	10	0
PO-9	Wheelchair, Child	-	-	-	-	-	-	-	10	0
PO-10	Crutch for adult	-	10	-	-	10	-	-	-	-
PO-11	Forarm Crutch for Adult	-	10	-	-	10	-	-	-	-
PO-12	Quad Can for child	-	10	-	-	10	-	-	-	-
PO-13	Wheelchair, Adult	-	10	-	-	10	-	-	-	-
TREADMILL										
TR-1	Sports Treadmill	3	0	3	3	0	3	3	0	3
TR-2	Treadmill	4	0	4	4	0	3	4	0	3

Priority: A: Highly desirable
C: Subject to deletion

ANNEX-3 JAPAN'S GRANT AID SCHEME

1. Grant Aid Procedure

1) Japan's Grant Aid Program is executed through the following procedures.

Application (Request made by a recipient country)

Study (Basic Design Study conducted by JICA)

Appraisal & Approval (Appraisal by the Government of Japan and Approval by Cabinet)

Determination of Implementation (The Notes exchanged between the Governments of Japan and the recipient country)

2) Firstly, the application or request for a Grant Aid project submitted by a recipient country is examined by the Government of Japan (the Ministry of Foreign Affairs) to determine whether or not it is eligible for Grant Aid. If the request is deemed appropriate, the Government of Japan assigns JICA to conduct a study on the request. If necessary, JICA send a Preliminary Study Team to the recipient country to confirm the contents of the request.

Secondly, JICA conducts the study (Basic Design Study), using Japanese consulting firms. Thirdly, the Government of Japan appraises the project to see whether or not it is suitable for Japan's Grant Aid Program, based on the Basic Design Study report prepared by JICA, and the results are then submitted to the Cabinet for approval.

Fourthly, the project, once approved by the Cabinet, becomes official with the Exchange of Notes signed by the Governments of Japan and the recipient country.

Finally, for the implementation of the project, JICA assists the recipient country in such matters as preparing tenders, contracts and so on.

2. Basic Design Study

1) Contents of the Study

The aim of the Basic Design Study (hereinafter referred to as "the Study"), conducted by JICA on a requested project (hereinafter referred to as "the Project"), is to provide a basic document necessary for the appraisal of the Project by the Government of Japan. The contents of the Study are as follows:

a) confirmation of the background, objectives and benefits of the Project and also institutional



capacity of agencies concerned of the recipient country necessary for the Project's implementation;

- b) evaluation of the appropriateness of the Project to be implemented under the Grant Aid Scheme from the technical, social and economic points of view;
- c) confirmation of items agreed on by both parties concerning the basic concept of the Project;
- d) preparation of a basic design of the Project; and
- e) estimation of costs of the Project.

The contents of the original request are not necessarily approved in their initial form as the contents of the Grant Aid project. The Basic Design of the Project is confirmed considering the guidelines of Japan's Grant Aid Scheme.

The Government of Japan requests the Government of the recipient country to take whatever measures are necessary to ensure its self-reliance in the implementation of the Project. Such measures must be guaranteed even through they may fall outside of the jurisdiction of the organization in the recipient country actually implementing the Project. Therefore, the implementation of the Project is confirmed by all relevant organizations of the recipient country through the Minutes of Discussions.

2) Selection of Consultants

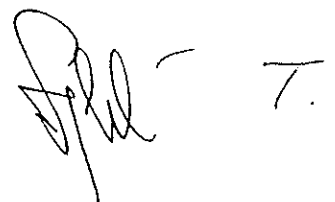
For the smooth implementation of the Study, JICA uses a consulting firm selected through its own procedure (competitive proposal). The selected firm participates the Study and prepares a report based upon the terms of reference set by JICA.

At the beginning of implementation after the Exchange of Notes, for the services of the Detailed Design and Construction Supervision of the Project, JICA recommends the same consulting firm which participated in the Study to the recipient country, in order to maintain the technical consistency between the Basic Design and Detailed Design as well as to avoid any undue delay caused by the selection of a new consulting firm.

3. Japan's Grant Aid Scheme

1) What is Grant Aid?

The Grant Aid Program provides a recipient country with non-reimbursable funds to procure the facilities, equipment and services (engineering services and transportation of the products, etc.) for economic and social development of the country under principles in accordance with the relevant laws and regulations of Japan. Grant Aid is not supplied through the donation of materials as such.

Handwritten signature and initials in the bottom right corner of the page.

2) Exchange of Notes (E/N)

Japan's Grant Aid is extended in accordance with the Notes exchanged by the two Governments concerned, in which the objectives of the project, period of execution, conditions and amount of the Grant Aid, etc., are confirmed.

3) "The period of the Grant" means the one fiscal year which the Cabinet approves the project for. Within the fiscal year, all procedure such as exchanging of the Notes, concluding contracts with consulting firms and contractors and final payment to them must be completed.

However, in case of delays in delivery, installation or construction due to unforeseen factors such as weather, the period of the Grant Aid can be further extended for a maximum of one fiscal year at most by mutual agreement between the two Governments.

4) Under the Grant, in principle, Japanese products and services including transport or those of the recipient country are to be purchased.

When the two Governments deem it necessary, the Grant Aid may be used for the purchase of the products or services of a third country.

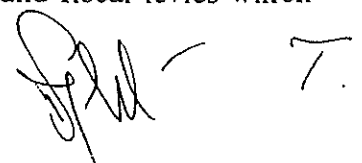
However, the prime contractors, namely consulting, contracting and procurement firms, are limited to "Japanese nationals". (The term "Japanese nationals" means persons of Japanese nationality or Japanese corporations controlled by persons of Japanese nationality.)

5) Necessity of "Verification"

The Government of the recipient country or its designated authority will conclude contracts denominated in Japanese yen with Japanese nationals. Those contracts shall be verified by the Government of Japan. This "Verification" is deemed necessary to secure accountability of Japanese taxpayers.

6) Undertakings required to the Government of the recipient country

- a) to secure a lot of land necessary for the construction of the Project and to clear the site;
- b) to provide facilities for distribution of electricity, water supply and drainage and other incidental facilities outside the site;
- c) to ensure prompt unloading and customs clearance at ports of disembarkation in the recipient country and internal transportation therein of the products purchased under the Grant Aid;
- d) to exempt Japanese nationals from customs duties, internal taxes and fiscal levies which

A handwritten signature in black ink, appearing to be 'J. M.', followed by a checkmark symbol.

may be imposed in the recipient country with respect to the supply of the products and services under the verified contracts;

- e) to accord Japanese nationals whose services may be required in connection with the supply of the products and services under the verified contracts such as facilities as may be necessary for their entry into the recipient country and stay therein for the performance of their work;
- f) to ensure that the facilities constructed and products purchased under the Grant Aid be maintained and used properly and effectively for the Project; and
- g) to bear all the expenses, other than those covered by the Grant Aid, necessary for the Project.

7) "Proper Use"

The recipient country is required to maintain and use the facilities constructed and equipment purchased under the Grant Aid properly and effectively and to assign the necessary staff for operation and maintenance of them as well as to bear all the expenses other than those covered by the Grant Aid.

8) "Re-export"

The products purchased under the Grant Aid shall not be re-exported from the recipient country.

9) Banking Arrangement (B/A)

- a) The Government of the recipient country or its designated authority should open an account in the name of the Government of the recipient country in a bank in Japan (hereinafter referred to as "the Bank"). The Government of Japan will execute the Grant Aid by making payments in Japanese yen to cover the obligations incurred by the Government of the recipient country or its designated authority under the verified contracts.
- b) The payments will be made when payment requests are presented by the Bank to the Government of Japan under an Authorization to Pay (A/P) issued by the Government of recipient country or its designated authority.

A handwritten signature in black ink, appearing to be 'J. P. K.', is written in the bottom right corner of the page. To its right is a simple horizontal line with a small vertical tick at its right end, resembling a checkmark or a stylized '7'.

Annex-4

Major Undertakings to be taken by Each Government

No.	Items	To be covered by Grant Aid	To be covered by Recipient Side
1	To bear the following commission to a bank of Japan for the banking services based upon B/A		
	1) Advising commission of A/P		●
	2) Payment commission		●
2	To ensure prompt unloading and customs clearance at port of disembarkation in recipient country		
	1) Marine (Air) transportation of the products from Japan to the recipient country	●	
	2) Tax exemption (including internal tax) and custom clearance of the products at the port of disembarkation		●
	3) Internal transportation from the port of disembarkation to the Project site	●	
3	To accord Japanese nationals whose services may be required in connection with the supply of the products and the services under the verified contract such facilities as may be necessary for their entry into the recipient country and stay therein for the performance of their work.		●
4	To exempt Japanese nationals from customs duties, internal taxes and other fiscal levies which may be imposed in the recipient country with respect to the supply of the products and services under the verified contracts.		●
5	To maintain and use properly and effectively the equipment provided under the Grant Aid.		●
6	To bear all the expenses, other than those to be borne by the Grant Aid, necessary for construction of the facilities as well as for the transportation and installation of the equipment.		●

Handwritten signature and initials in the bottom right corner of the page.

MINUTES OF DISCUSSIONS
ON THE BASIC DESIGN STUDY
ON THE PROJECT FOR IMPROVEMENT OF
REHABILITATIVE CARE IN REHABILITATION CENTERS
IN THE AZERBAIJAN REPUBLIC
(EXPLANATION ON DRAFT REPORT)

In October,2001, the Japan International Cooperation Agency (hereinafter referred to as "JICA") dispatched a Basic Design Study Team on THE PROJECT FOR IMPROVEMENT OF REHABILITATIVE CARE IN REHABILITATION CENTERS (hereinafter referred to as "the Project") to THE AZERBAIJAN REPUBLIC (hereinafter referred to as AZERBAIJAN), and through discussion, field survey, and technical examination of the results in Japan, JICA prepared a draft report of the study.

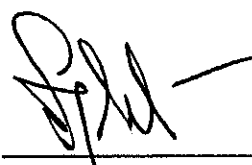
In order to explain and to consult the AZERBAIJAN on the components of the draft report, JICA sent to AZERBAIJAN the Draft Report Explanation Team (hereinafter referred to as " the Team "), which is headed by Mr.Totsuka Shinji, Deputy Director,Second Project Management Division,Grant Aid Management Department,JICA, from 10th January,2002 to 18th January,2002.

As a result of discussions,both parties confirmed the main items described on the attached sheets.

Baku, January 16th,2002



Mr. Totsuka Shinji
Leader
Draft Report Explanation Team,
Japan International Cooperation Agency



Mr. Tahir Budagov
Deputy Minister
Ministry of Labor and Social Protection of
Population
Azerbaijan Republic

ATTACHMENT

1.Components of the Draft Report

The government of Azerbaijan agreed and accepted in principle the components of the draft report explained by the team. The details of the components are described in Annex-1. However, the final components which will be procured under the Project will be decided by Japanese side after further study.

2.Japan's Grant Aid scheme

Azerbaijan side understands the Japan's Grant Aid Scheme and the necessary measures to be taken by the government of Azerbaijan as explained by the Team and described in Annex- 3 and Annex-4 of the Minutes of Discussions signed by both parties on 16th October,2001.

3. Schedule of the Study

- 1) The consultants will conduct further surveys and discussions in Azerbaijan until January 27.
- 2) JICA will complete the final report in accordance with the confirmed item and send it to the government of Azerbaijan by May 2002.

4.Other relevant issues

- 1) Ministry of Labor and Social Protection of Population ensures to allocate necessary budget for operating and maintaining the equipment provided to the Republican Rehabilitation Center, Sanatorium, and Children Rehabilitation Center under the Japan's Grant Aid.
- 2) Azerbaijan side agreed to execute the items of the following;
 - The construction work for the Sanatorium and the Children Rehabilitation Center will be finished by October 2002. And also furnishings & fixtures for the above two facilities will be provided by the end of December 2002.
 - The renovation and preparation work such as removal of old equipment, renovating facilities where new equipment is to be installed, shall be done by the Azerbaijan side for the smooth and effective implementation of the Project.
 - Staff arrangement in details for the Sanatorium and the Children Rehabilitation Center, shall be done by Ministry of Labor and Social Protection of Population.

The team asked to appoint representatives of the Sanatorium and the Children Rehabilitation Center as of January 2003.



3) The Japan's Grant Aid may cover technical support as "Soft Component Services" during the period specified in the Exchange of Notes.

The government of Azerbaijan requested the following soft component services on;

- Dispatching to Azerbaijan two specialists (Physiotherapist and Occupational therapist), 1.5 months each
- Objective facilities; the Republican Rehabilitation Center, the Sanatorium and the Children Rehabilitation Center

However, the implementation of the above services will be decided after further studies and analysis.

4) Azerbaijan side requested to have received personnel in Japan for training new rehabilitation activities under the Technical Cooperation rendered by JICA and the team will further consideration of it in Japan.

A handwritten signature in black ink, appearing to be 'S. P. H.', located in the lower right quadrant of the page.A handwritten signature in black ink, appearing to be 'P. M. H.', located in the bottom left corner of the page.

Item No.	Description	Republican rehabilitation Center in Baku	Sanatorium	Children Rehabilitation Center	Total Quantity
		Quantity	Quantity	Quantity	
Dignostic					
D-1	X-ray Unit	2	1	1	4
D-2	Ultrasound Scanner	1	1	1	3
D-3	Electrocardiograph	1	1	1	3
D-4	Electroencephalograph	1	1	1	3
D-5	Reograph	1	1	1	3
D-6	Spirometer	1	1	2	4
D-7	Spectrophotometer	1	1	1	3
D-8	EMG	1	1	1	3
D-9	Portable Defibrillator	1	1	1	3
D-10	Hot Air sterilizer	1	1	1	3
D-13	Car for disabled person	1	1	1	3
D-14	Dark room equipment for X-ray	2	1	1	4
Dental					
D-11	Dental Unit	1	1	1	3
D-12	Dental X-ray	1	1	1	3
D-15	Dental treatment equipment	1	1	1	3
PHYSIOTHERAPY					
P-1	Electric traction	1	1	1	3
P-2	Low Frequency Therapy	2	2	2	6
P-3	Interferential Therapy	2	2	2	6
P-4	Microwave Therapy	2	2	2	6
P-5	Shortwave Therapy	2	2	2	6
P-6	Ultrasound Therapy	2	2	2	6
P-8	Interfared lamp	2	2	2	6
P-9	Ultraviolet Lamp	2	2	2	6
P-10	Treatment Table	7	7	7	21
P-11	Paraffin Bath	2	2	2	6
P-12	Hot Pack Unit	2	2	2	6
P-13	Pack Wagon	2	2	2	6
P-14	Low Frequency & Electroheat pack Therapy unit	2	2	2	6
P-16	Infrared Ray Energy and Thermal Stimulation star Beam	1	1	1	3
THERPEUTIC EXERCISE					
T-1	Multi Station with Wire Net	1	1	1	3
T-2	Training Bed	2	2	2	6
T-5	Shoulder Wheel	1	1	1	3
T-8	Wall stall Bars	4	4	4	12
T-10	Bicycle Exerciser	3	3	3	9
T-17	Parallel Bars	1	1	1	3
T-18	Posture Training Mirror	2	2	2	6
T-19	Curb Blocks	2	2	2	6
T-20	Exercise Stairs	1	1	1	3
T-21	Mat Platform	2	2	2	6
T-22	Training Mat	10	10	10	30
T-23	Dumbbell with Rack	2	2	2	6
T-24	Musclematic Weight	2	2	2	6
T-25	Cart for Musclematic weight	1	1	1	3
T-27	Ankle Exercise Sandal with Bar	4	4	4	12
T-28	Alternate Traction Pyller Exerciser	2	2	2	6
T-29	Sling & spring Suspension	2	2	2	6
T-30	Holding Mitt	4	4	4	12

Procurement equipment list

Item No.	Description	Republican rehabilitation Center in Baku	Sanatorium	Children Rehabilitation Center	Total Quantity
		Quantity	Quantity	Quantity	
T-31	Ankle Exercise Cuff	3	3	3	9
T-36	Timer	6	6	6	18
T-37	Medicine Ball	2	2	-	4
T-39	Tilt Table, Child	-	-	2	2
T-40	Parallel Bars, Child	-	-	2	2
T-41	Exercise Stairs, Child	-	-	2	2
T-42	Wedge	-	-	1	1
T-44	Bubble Ball Bath	-	-	1	1
T-45	Rolls	-	-	1	1
T-46	Barrel Roll	-	-	2	2
T-47	Rocker Balance	-	-	2	2
T-48	Training Ball	-	-	1	1
T-49	Maintenance Kit	-	-	2	2
T-50	Deck Quits	-	-	2	2
T-51	Tool set for perception and cognition	-	-	1	1
T-52	Toy set for infants	-	-	1	1
OCCUPATIONAL THERAPY					
O-2	Standing Table	2	2	-	4
O-3	Hydraulic Work Table	2	2	2	6
HYDRO THERAPY					
H-1	Bath with lift	2	2	2	6
H-2	Whirlpool Bath for Full Body	2	2	2	6
H-3	Whirlpool Bath for Arms&Legs	1	1	1	3
H-5	Bubbler	4	4	4	12
H-6	Pressure hose set	1	-	-	1
EVALUATION					
E-1	Forward Flexmeter	2	2	2	6
E-2	Weight Measure	4	4	4	12
E-3	Height Measuring Gauge	4	4	4	12
E-5	Goniometer Set	2	2	2	6
E-6	Digital Hemadinamometer	15	15	15	45
E-7	Spirometer	3	3	3	9
E-8	Peg Board(Set of)	3	3	3	9
E-9	Step Simple Test for Evaluating Hand Function	3	3	3	9
E-10	Dynamometer	2	2	2	4
POSITIONING					
PO-2	Walker	10	10	10	30
PO-4	Invalid Walkers	5	5	5	15
PO-5	Walkerette for child	-	-	5	5
PO-6	Fixed Walker for child	-	-	5	5
PO-7	Forearm Crutch for child	-	-	10	10
PO-8	Crutch for child	-	-	10	10
PO-9	Wheelchair, Child	-	-	10	10
PO-10	Crutch for adult	10	10	-	20
PO-11	Forearm Crutch for Adult	10	10	-	20
PO-12	Quad Can	10	10	-	20
PO-13	Wheelchair, Adult	10	10	-	20
Others					
EX-1	Automatic Voltage Regulator(AVR)				1

5. Cost Estimation Borne by the Recipient Country

5. Cost Estimation Borne by the Republic of Azerbaijan

(1) Cost Estimation for Renovation Work

1) Estimated cost:

Republican Rehabilitation Center	US\$47,000.-
Children rehabilitation Center	US\$15,600.-
Sanatorium	US\$15,900.-

2) works in detail:

- X-ray Room
Removal work for existing X-ray/Flooring work/
Walling work/Ceiling work/Fitting work/Electric work
- Therapeutic Exercise Room
Removal work/Flooring work/Walling work/Ceiling work/
Utility work/Electrical work

(2) Technical Specifications for Renovation Work

(see as per attached)

**TECHNICAL SPECIFICATIONS FOR RENOVATION WORK
of REPUBLICAN REHABILITATION CENTER,
CHILDREAN REHABILITATION CENTER and SANATORIUM in BAKU, AZERBAIJAN.**

1. General:

1.1 Work covers “The Renovation Work for X-Ray Rm. belonging to the Republican Rehabilitation Center, Prosthesis, Children Rehabilitation Center, Sanatorium and Therapeutic Exercise Rm. belonging to the Republican Rehabilitation Center.”

- | | | |
|----|---------------------------|---|
| a. | X-Ray Rm. and Dark Rm., | 1st.F. of Republican Rehabilitation Center. |
| b. | X-Ray Rm. and Dark Rm., | 1st.F. of Prosthesis. |
| c. | X-Ray Rm. and Dark Rm., | 1st.F. of Children Rehabilitation Center. |
| d. | X-Ray Rm. and Dark Rm., | 1st.F. of Sanatorium. |
| e. | Therapeutic Exercise Rm., | 3rd.F. of Republican Rehabilitation Center. |

1.2 Code and Regulation:

The renovation work shall comply with the legislation rules, regulations and codes of Azerbaijan.

1.3 Standard:

Applicable standards shall comply with European, Japanese or Azerbaijan standards.

1.4 Definitions:

“Architect” or “Architect’s Representative” as specified in this Specifications, shall mean “Engineer” or his “Representative” as specified in the “General Conditions” of the Contract.

1.5 Clarifications:

If the Supplier discovers any indication in the Drawing of Specifications, which is not clear and definite, he shall promptly notify the Architect for resolution of the intent of the design. If the Supplier discovers any inconsistency between the drawings and Specifications, the Supplier shall promptly report to the Architect for solution.

1.6 Minor Changes:

There may be instances where minor change in material dimensions and/or methods of installations are necessary due to adjustment and/or coordination in the field. In such instances, the Supplier is not expected to ask for adjustment in the Contract amount.

1.7 Change in the Work:

Except in an emergency, changes in work shall be performed in accordance with Change Orders, but in no case shall be performed without a written request for changes in work and an approval thereof beforehand. All changes in work, other than minor changes, shall be performed in accordance with a Change Order in which a change in the contract amount must be clearly stated.

2. Construction Schedule:

2.1 The Supplier shall submit a detailed construction schedule for approval by the Architect within fourteen (14) days after the award of Contract.

2.2 The construction schedule shall be up-dated on a weekly basis identifying activities completed to date and any corrections required to assure steady progress toward projected completion. Corrections shall be only with concurrence of the Architect.

3. Materials:

- 3.1 All materials and equipment furnished under this Contract shall be new unless otherwise specified, and all Work shall be of good quality, free from faults and defects, and in conformance with the Contract Documents.
- 3.2 The products noted in the Specifications, in principal, should be furnished. In case products beyond the Specifications are furnished, necessary data should be submitted to the Architect and his advance should be obtained for furnishing the products.

4. Construction:

- 4.1 The Supplier is solely responsible for the execution of the works. Necessary consideration should be made especially for the security control. Supplier's duties include as following: Except as specifically noted, provide and pay for;
 - a. Labor, materials and equipment.
 - b. Tools, construction equipment and machinery.
 - c. Water, heat and utilities required for construction.
 - d. Other facilities and services necessary for proper execution and completion of the work.
- 4.2 Material delivery, handling, storage and other similar items, where not specifically noted herein, shall conform to Standard of Azerbaijan.

5. Record:

- 5.1 The Supplier shall, during the progress of the work, keep in his field office an accurate record of all deviations from the original contract drawing on one (1) set of blue or black line prints for construction purpose. The Supplier shall transfer to the design drawing all change indicate on his record set in preparing As-Built drawings.
- 5.2 The Supplier shall submit, once every seven (7) days, a progress report respectively to the Buyer and the Architect and also deposit another set of the report at the Supplier's office, according to the submitted schedule as described in "2.Construction schedule".
- 5.3 Construction Photos:
During construction, the Supplier shall submit to the Architect three (3) sets of color photographs showing progress of the work or as directed by the Architect as follows:
 - a. Prior to commencement of the construction work, photographs showing existing condition.
 - b. During construction, with one (1) week intervals, photographs showing interior view from two (2) sides, and other photographs showing locations as directed by the Architect.
 - c. At time of completion, photographs showing exterior and interior view shall be submitted. Construction completion photograph shall be taken upon consultation with the Architect.

6. Completion of Construction:

- 6.1 Completion of the work:
Completion of the work shall be interpreted to mean the date when all work within the scope is complete, the report of Construction Completion has been submitted, and the building is completely ready for occupancy in all respects. This date is further referred to as "The moment of first Handing over".
- 6.2 Construction Completion Inspection:

- a. The Supplier shall obtain preliminary inspection from the Architect's Representative on construction completion a minimum of seven (7) days prior to the date of completion and submit a schedule of the work yet to be completed.
- b. Construction completion inspection shall be performed to ascertain that all work has been completed in Accordance with the drawings and specifications in the presence of the Buyer and the Architect's Representative. After inspection, the Supplier shall submit a schedule for completion of all unapproved work.

6.3 Delivery of Work:

- a. The Supplier shall deliver the work to the Buyer within seven (7) days after completion of the work.
- b. The Supplier shall, at the time of delivery of the work, submit following items to the Buyer.
 - 1) Certificate of transferring work to the Buyer.
 - 2) Written guarantee of renovation work.
 - 3) Equipment maintenance instructions.
 - 4) Other documents related to the work.
- c. Supplier shall, within seven (7) days of delivery of work, submit to the Architect's Representative as-built drawings and shop drawings. All these Drawings shall be of sufficient detail and provided with sufficient dimensions etc. to enable the Buyer to maintain, dismantle, re-assemble and adjust all parts of the work.

7. Scope of Work:

A. 1st. F. X-Ray Rm., Republican Rehabilitation Center.

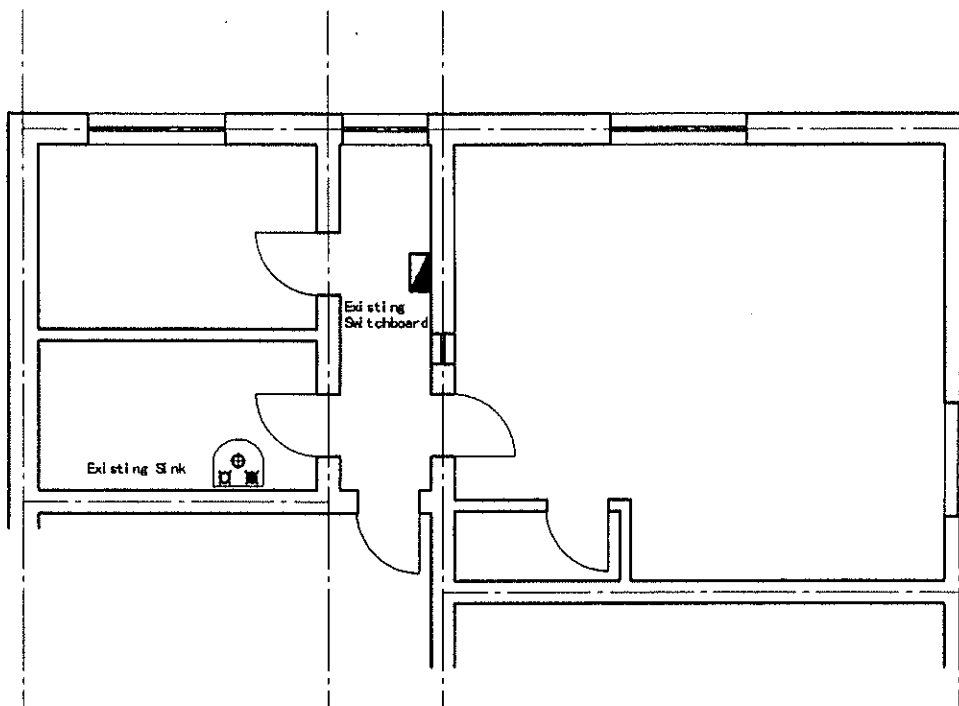
- 1) Architectural Work
 - a) Demolish and remove existing wall, doors, windows, sink and piping as drawn.
 - b) New wall shall be build as drawn and structural part shall be concrete block or stone 150mm thickness or more.
 - c) New doors shall be 800 width by 2100 height fix as drawn and protect from X-Ray if necessary.
 - d) New windows protect from X-Ray shall be more than 400mm by 400mm fix as drawn.
 - e) Floor shall be light weight concrete 100mm thickness and finish shall be by linoleum.
 - f) Cable duct shall be 300mm width 100mm depth with stainless cover as drawn.
 - g) Skirting board shall be fix if necessary.
 - h) Repair cracks and damage on wall and ceiling and finish with paint.
 - i) Provide new W sink with counter 1200mm width or more.
- 2) Electrical Work
 - a) Provide branch switch board with cabling and cutout switch 220V, 50HZ, more than 50kva. from existing switch board for new equipment and additional cutout switches with earth.
 - b) Provide new fluorescent lights, electrical outlets and switches for each room.
 - c) Provide new dark room light for Dark room.
- 3) Plumbing Work
 - a) Provide 20mm, 15mm diameter water and hot water supply piping for W sink and connect to existing main pipe.
 - b) Provide 60mm or more diameter drainage piping from existing main pipe with clean out and connect to W sink.
 - c) Provide 25mm diameter glass wool insulation to water and hot water piping.

- d) Provide new ventilation fan for X-Ray room and Dark room specified as drawn.
- 4) Removal Work and Others
 - a) Remove existing sink, taps and piping if necessary.
 - b) All necessary work to execute the above scope shall be included.
- B. 1. F. X-Ray Rm., Prosthesis.
Same as Republican Rehabilitation Center.
- C. 1. F. X-Ray Rm., Children Rehabilitation Center.
Same as Republican Rehabilitation Center.
- D. 1.F. X-Ray Rm., Sanatorium.
Same as Republican Rehabilitation Center.
- E. 3.F. Therapeutic Exercise Rm., Republican Rehabilitation Center.
 - 1) Architectural Work
 - a) Demolish and remove existing floor as drawn.
 - b) Cleaning on wall and ceiling.
 - c) Repair cracks and damage on wall and ceiling, finish with paint.
 - d) Provide light weight concrete 100mm thickness as drawn.
 - e) Repair existing doors and windows, finish with paint.
 - 2) Electrical Work
 - a) Provide cabling and cutout switches from existing switch board for new equipments and additional electrical outlets with earth.
 - b) Provide new fluorescent lights.
 - 3) Removal and Others
 - a) Remove existing Equipment and Machines.
 - b) All necessary work to execute the above scope shall be included.

SPECIFICATION

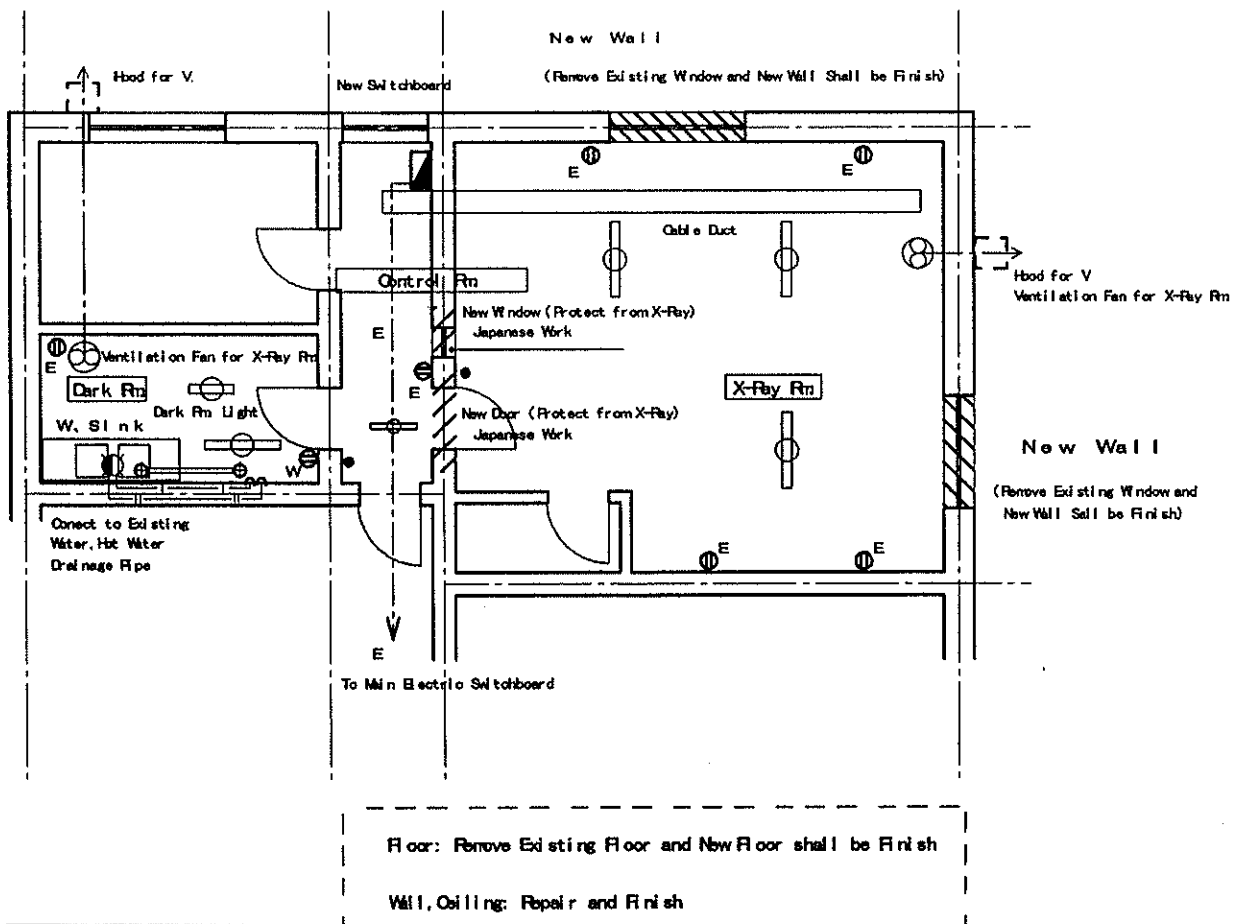
- 1) Removal and Demolition
 - 1.1 Dispose all removed equipment as per instructions of the authority of the Center.
 - 1.2 Other demolished building materials shall be disposed off the site by the Supplier.
- 2) Demolishing and other site preparation
 - 2.1 Trash and debris resulting from the Supplier's work shall be removed from the site daily or as directed to maintain cleanness of the job site at all time.
 - 2.2 After completion of the work, the area disturbed by the work shall be restored to the original condition with similar existing materials.
- 3) Earth Work
 - 3.1 Excavation shall be carried to the counters and dimensions indicated or necessary Excavation carried below the depth 500mm, without specific directions, shall be refilled to the proper grade with suitable material and compacted thoroughly.
 - 3.2 Soil materials used as backfill for structures shall consist of native materials, which are free from debris, roots, wood, scrub materials, and other vegetable matter and refuse. Backfill shall be placed in layers not more than 150mm thick. Each layer shall be compacted thoroughly and evenly.

- 3.3 The existing area disturbed by the work be restored to the original condition with similar existing material.
- 3.4 Surplus material shall be disposed as directed by the Architect.
- 4) Concrete Work
 - 4.1 $F_o = 180\text{kg/cm}^2$ at 28 days compressive strength.
 - 4.2 Light gauge galvanized mild steel mesh size shall be 50mm.
 - 4.3 Concrete surface shall be treated.
 - 4.4 Concrete base shall be fixed to floor by 9mm diameter 4 numbers bolts par square meter.
 - 4.5 Concrete base shall have 13mm diameter four (4) bolts to fix each Machine.
- 5) Carpentry
 - 5.1 Lumber moisture content at time of delivery and when installed in the work shall be 20% weight maximum.
 - 5.2 Local origin.
 - 5.3 Rough and Finish Nail shall be round wire nails.
- 6) Doors and Windows Work
 - 6.1 Doors and Windows shall be local origin.
 - 6.2 Doors shall be hinged type and shall be provided with frames and finish hardware (such as knob and key).
 - 6.3 Windows shall be aluminum or plastic sash.
 - 6.4 Sealing materials for aluminum or plastic sash glazing shall be polysulfide sealing type shall be used.
- 7) Paint Work
 - 7.1 Oil based paint.
 - 7.2 Color shall match existing color.
 - 7.3 Mix and apply paint in accordance with the manufacturer's recommendation.
 - 7.4 Prepare surface by drying thoroughly and brush down all surfaces immediately before painting to remove dust, dirt and loose materials.
- 8) Electrical fixture Work
 - 8.1 lighting, switch and other equipment shall be western origin.
 - 8.2 Socket outlet shall be earth.
- 9) Cabling Work
 - 9.1 Exposed cabling shall be installed in conduit pipe (PVC. Pipe).
 - 9.2 Size of cable shall be determined in consideration of the demand load of the room.
- 10) Switch board
 - 10.1 Main breaker shall be earth leakage detective type.
 - 10.2 Phase and amperage shall comply with equipment specifications.
 - 10.3 Branch breaker shall be equipped with more than two reserves.
 - 10.4 Breakers shall be provide for each new equipment and outlets.
 - 10.5 Switch board shall have casing earth.
- 11) Piping Work
 - 11.1 External water supply pipe shall be 25mm diameter steel pipe w/ insulation, or PVC .
 - 11.2 Internal water supply pipe shall be 20mm diameter steel pipe w/ insulation, or PVC .
 - 11.3 Internal steam pipe shall be 15mm, 20mm diameter copper w/ insulation.
 - 12.4 Drainage pipe shall be 60mm diameter and 100mm diameter PCV pipe.
 - 12.5 Existing drainage pipe and pit shall be clean out.

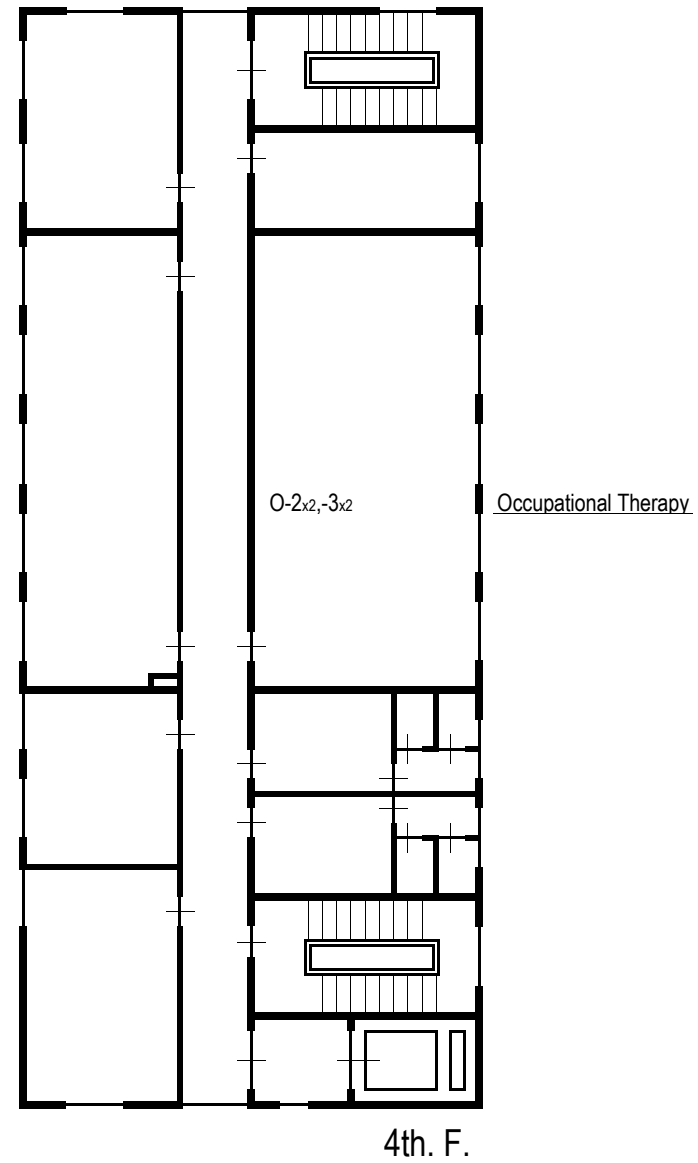
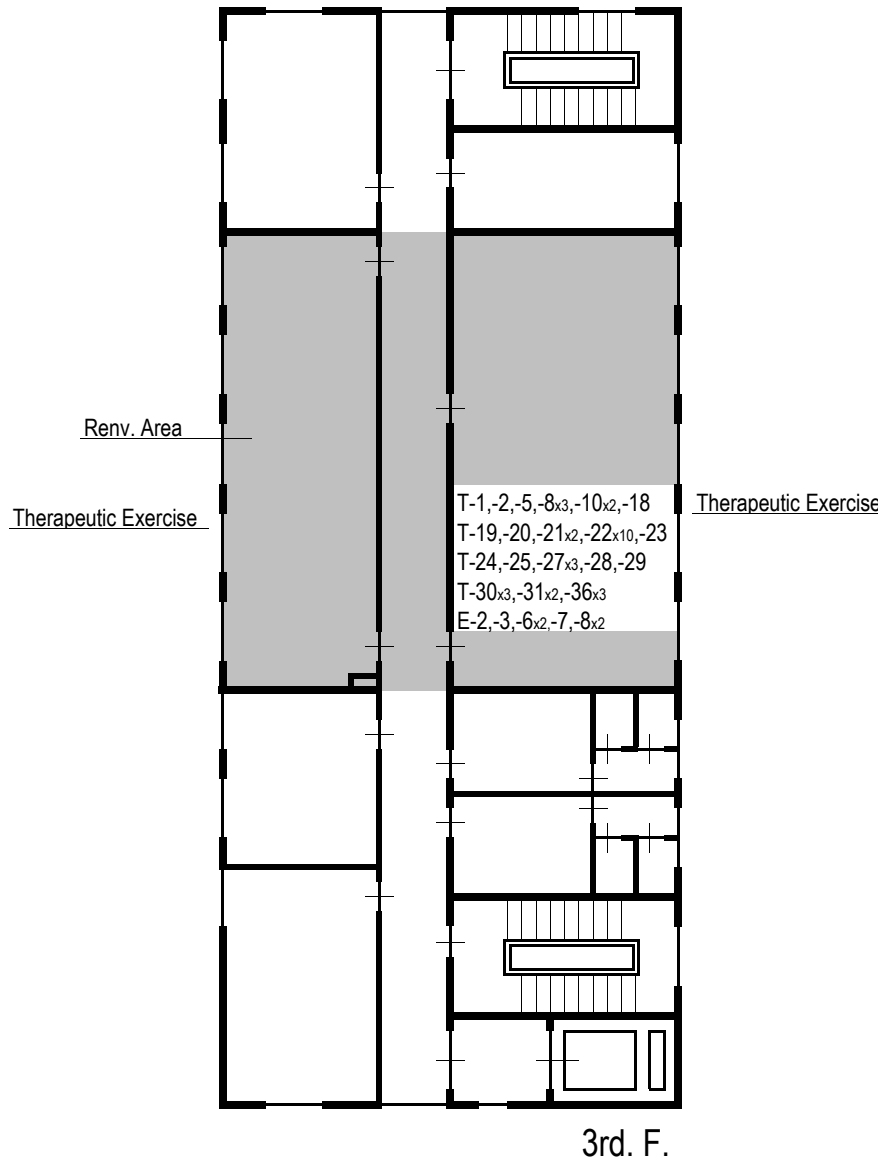


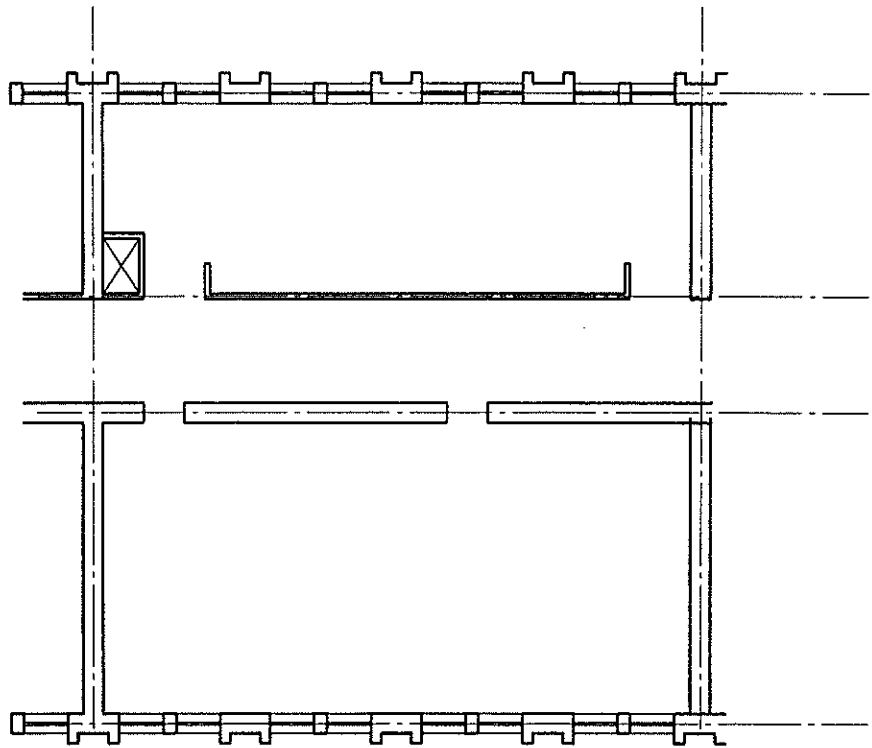
General Explanations	
●	Switch
⊕	E Outlet, 2
⊕ E	E Outlet w Earth
⊕ W	E Outlet WP
⊙	Dark Rm
⊕	Fluorescent lamp
⊕	Ventilator
⊕	Hood for V.
⊕	E Switchboard
---	E Main Wiring
⊕	Water Tap
⊕	Hbt Water Tap
⊕	Mixing Tap
⊕	Drainage
---	Water Supply Pipe
---	Hbt Water Supply Pipe
---	Drainage Pipe

Existing Plan



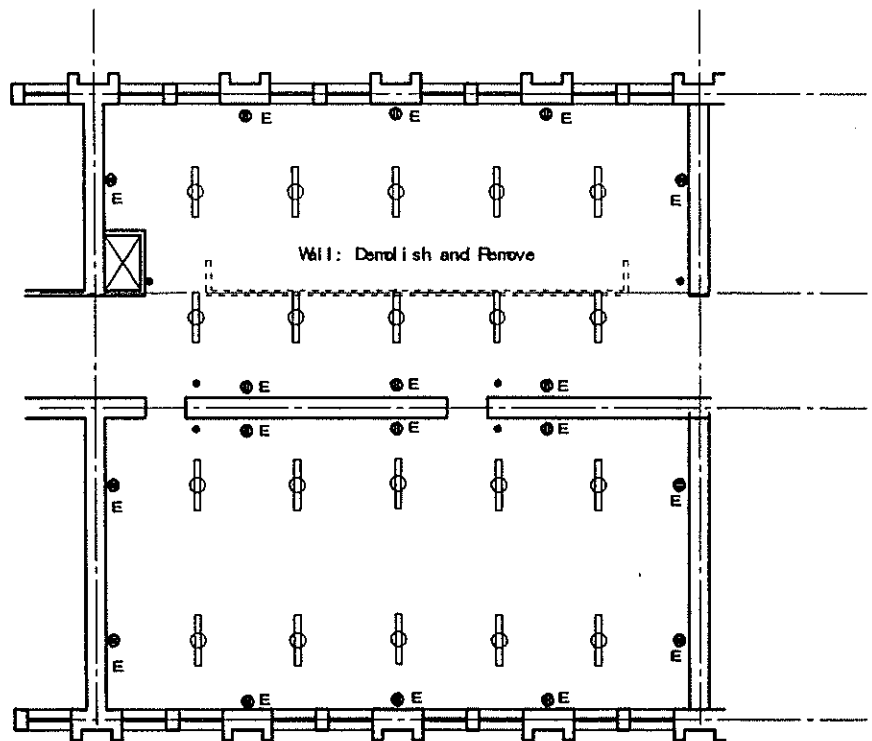
After Renovation Plan





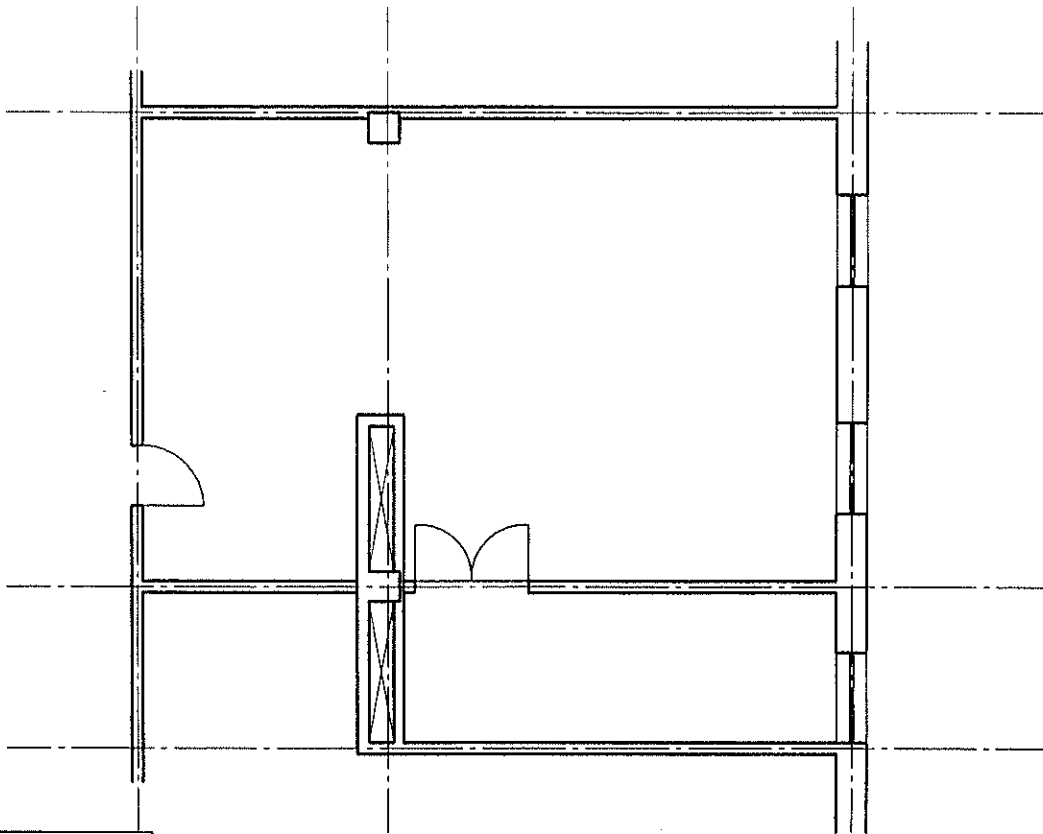
Existing Plan

Floor: Remove Existing Floor and New Floor shall be Finish
 Wall, Ceiling: Repair and Finish

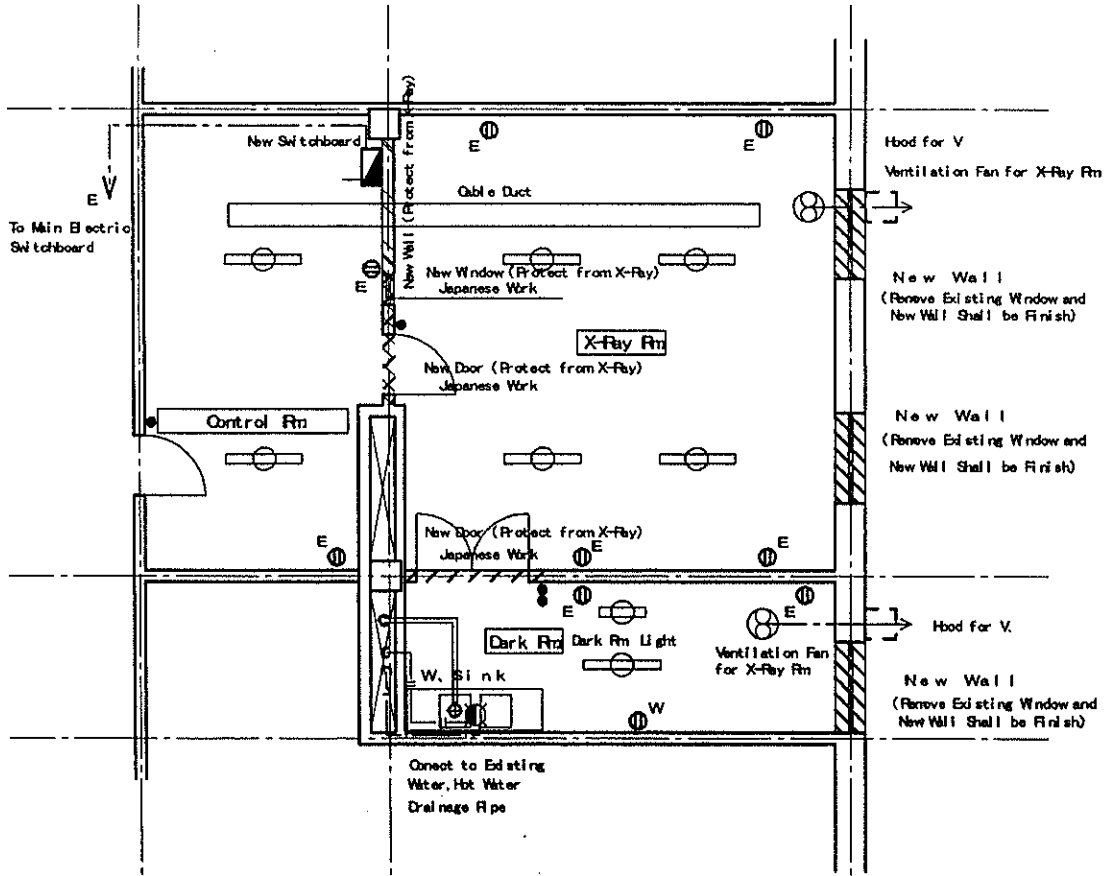


Floor: Repair and Finish
 Wall, Ceiling: Repair and Finish

After Renovation Plan

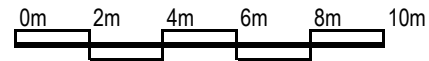
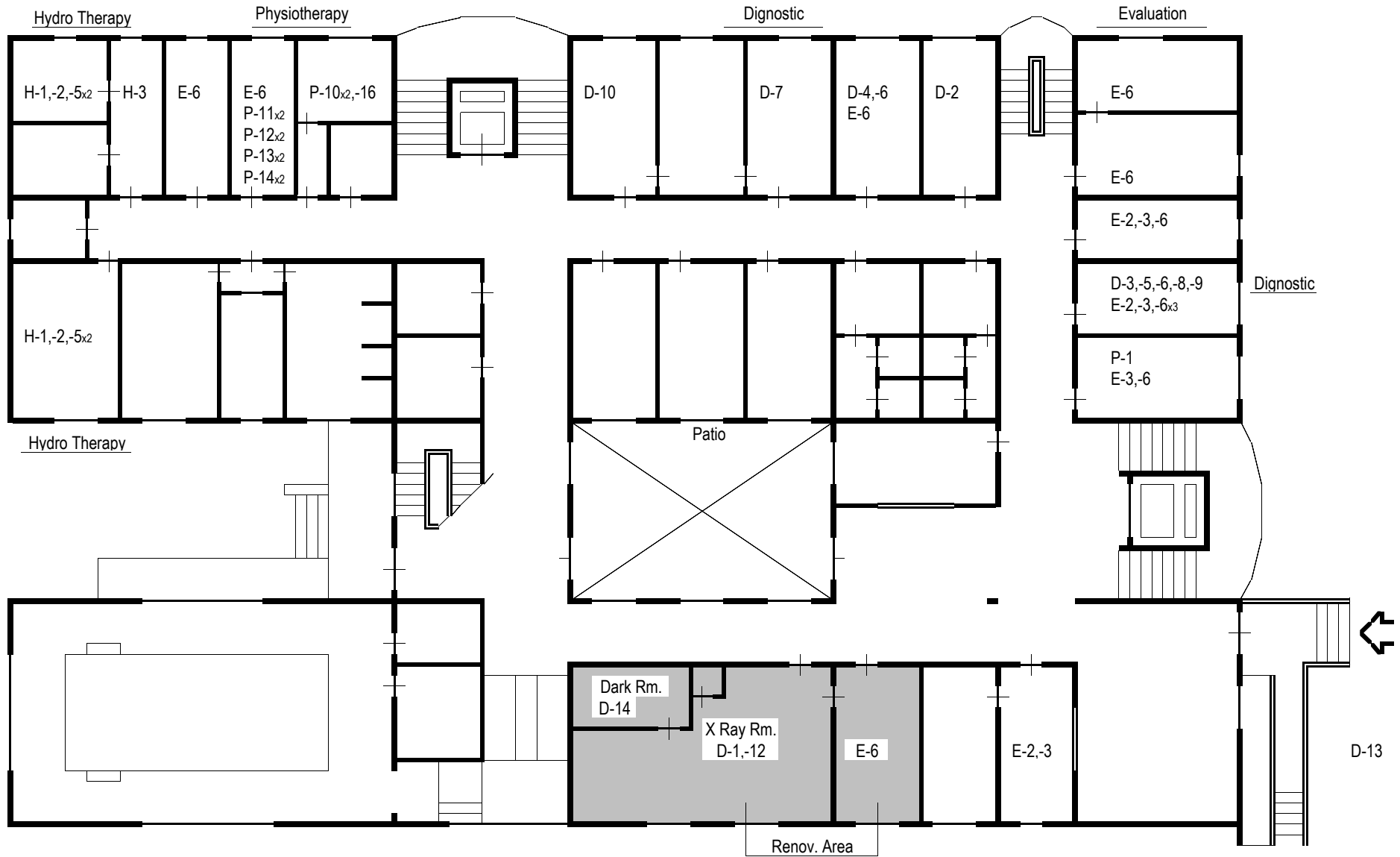


Existing Plan

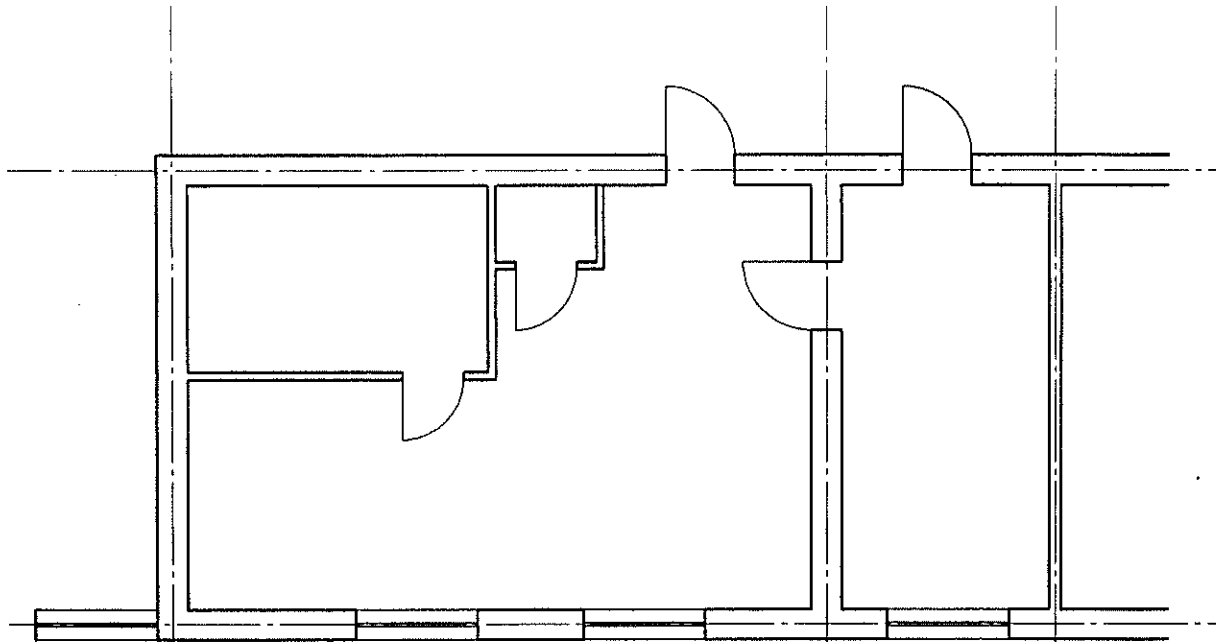


Floor: Remove Existing Floor and New Floor shall be Finish
 Wall, Ceiling: Repair and Finish

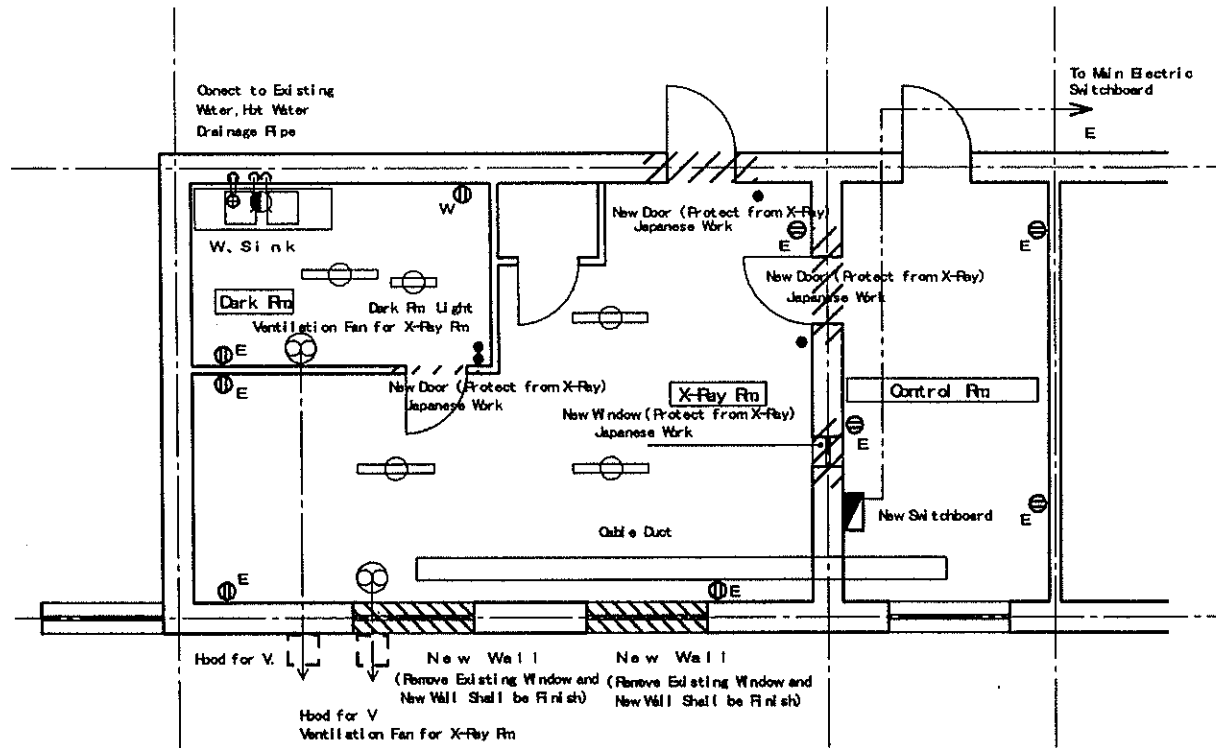
After Renovation Plan



Children Rehabilitation Center 1st.F. S=1:200



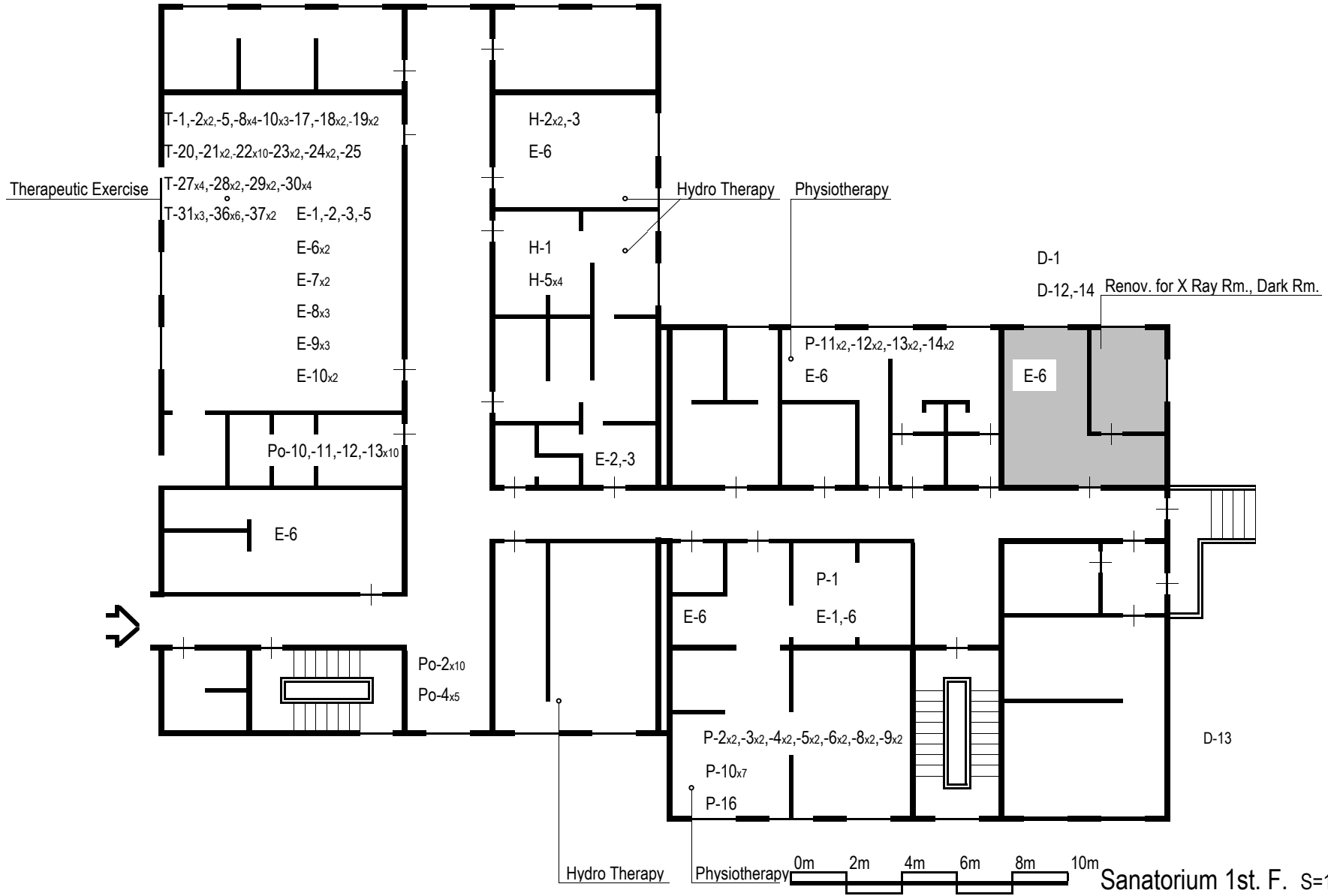
Existing Plan

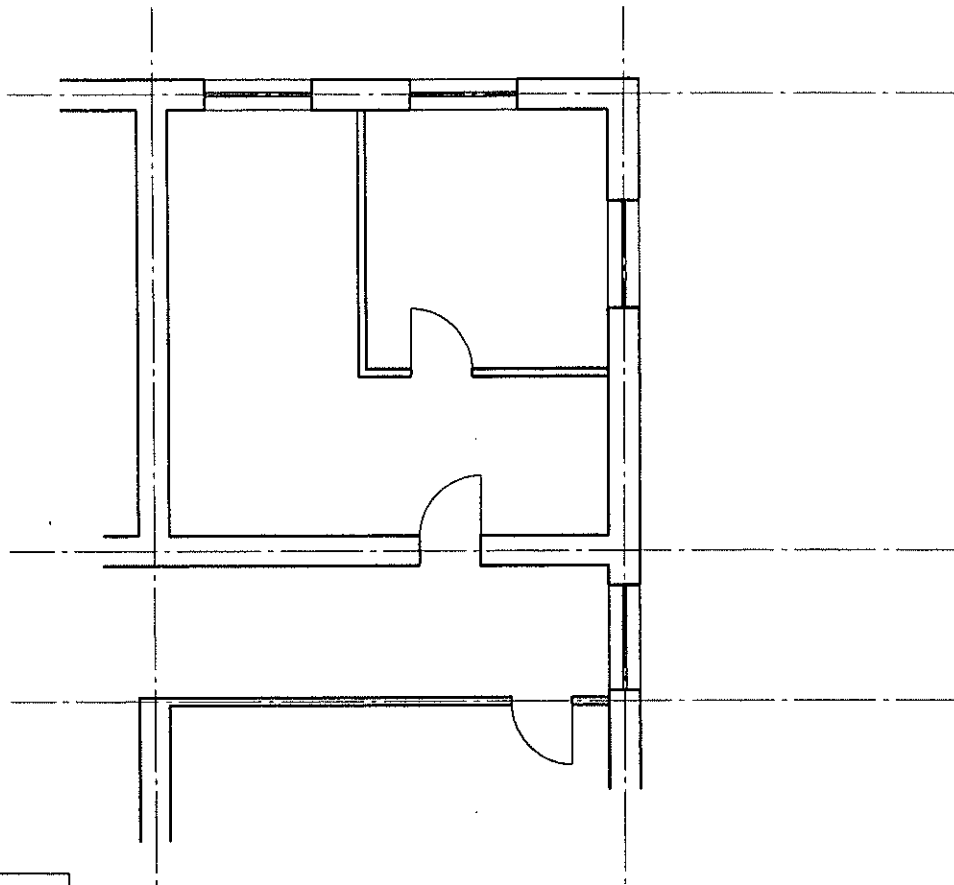


Floor: Remove Existing Floor and New Floor shall be Finish

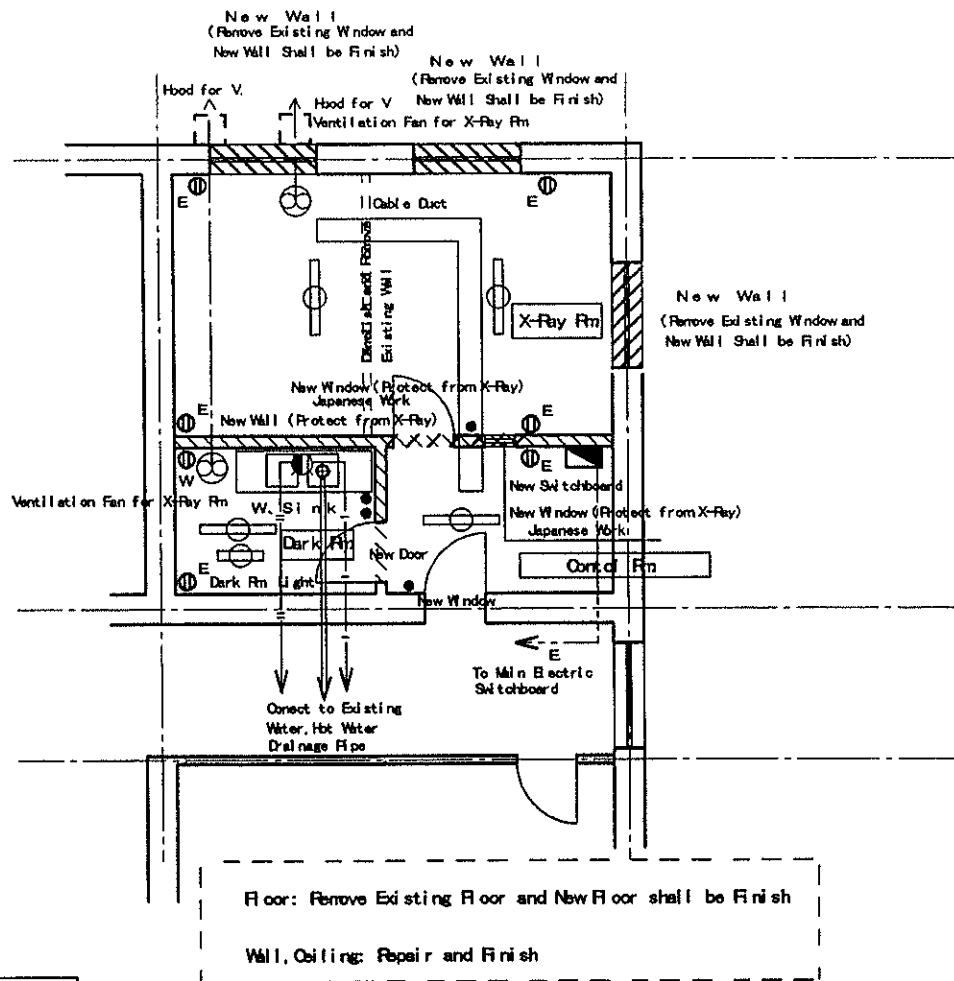
Wall, Ceiling: Repair and Finish

After Renovation Plan





Existing Plan



After Renovation Plan