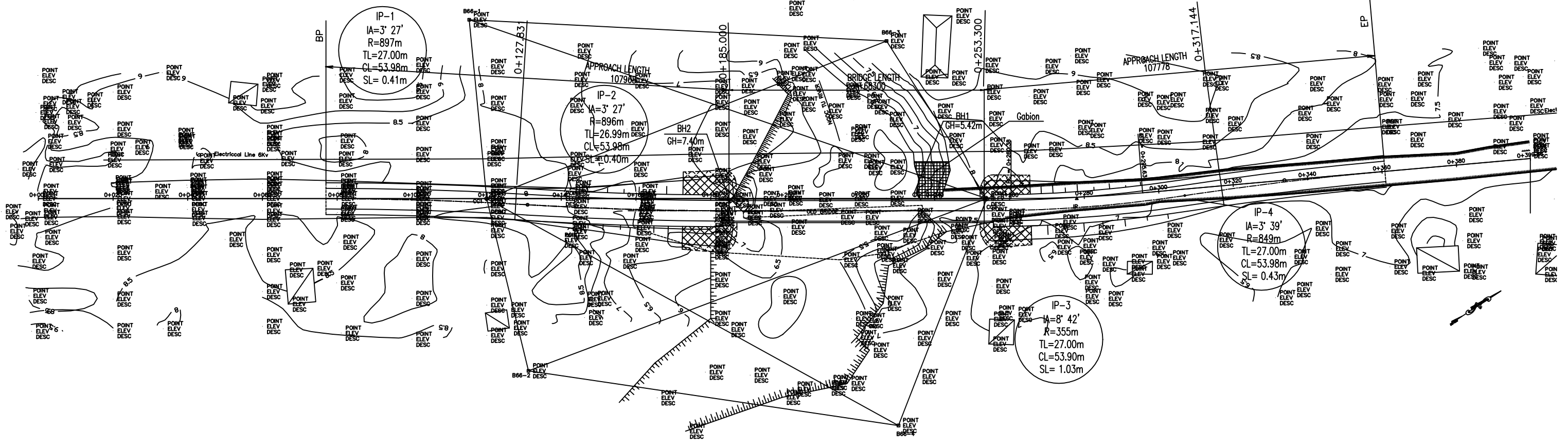


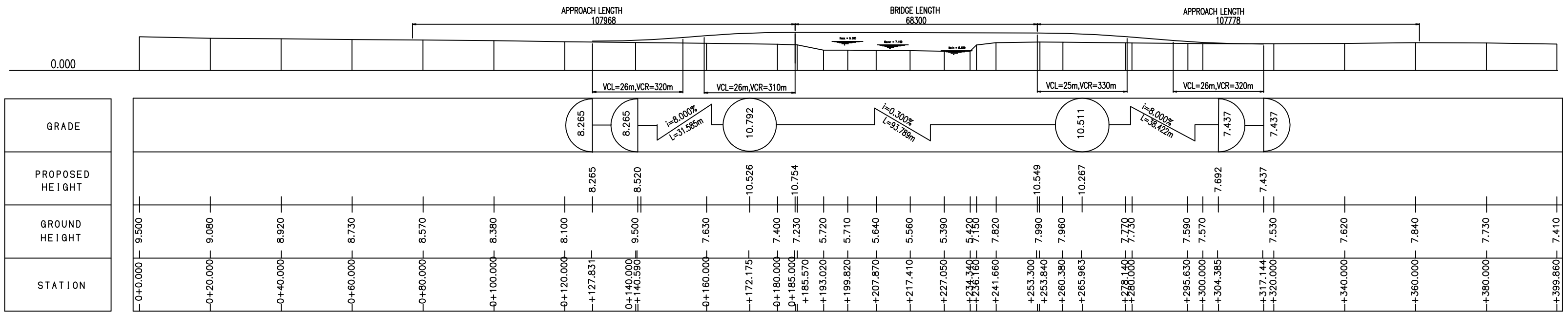
THE GOVERNMENT OF SOCIALIST REPUBLIC OF VIETNAM PROJECTS MANAGEMENT UNIT NO.18, MINISTRY OF TRANSPORTS			
PROJECT	THE PROJECT FOR RECONSTRUCTION OF BRIDGES IN THE CENTRAL AREA OF VIETNAM		
CONSULTANT	CONSORTIUM OF PACIFIC CONSULTANTS INTERNATIONAL AND ORIGINAL CONSULTANTS		
DESIGNED BY	CHECKED BY	APPROVED BY	
NAME	Y.FURUKAWA	H.ENDO	DZUNG
SIGNATURE			
DATE			

BR.NO.66 NGOC TU
GENERAL VIEW OF THE SITE

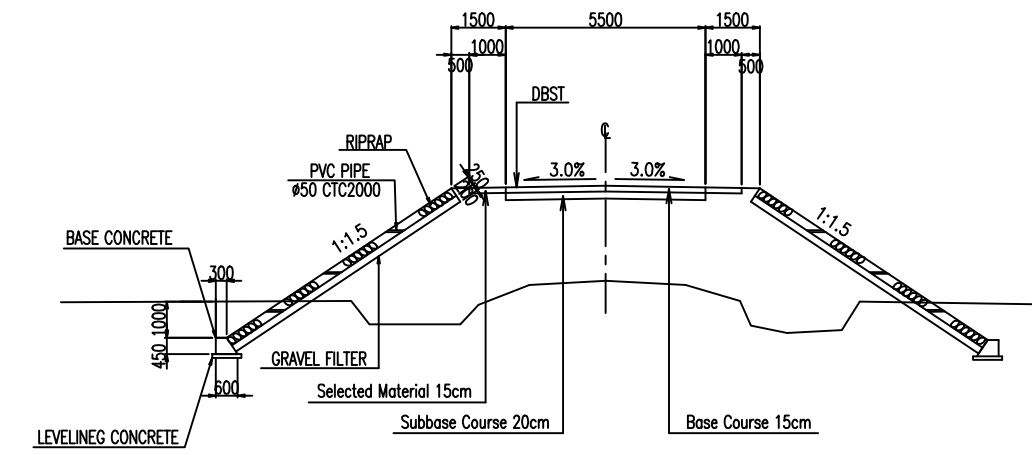
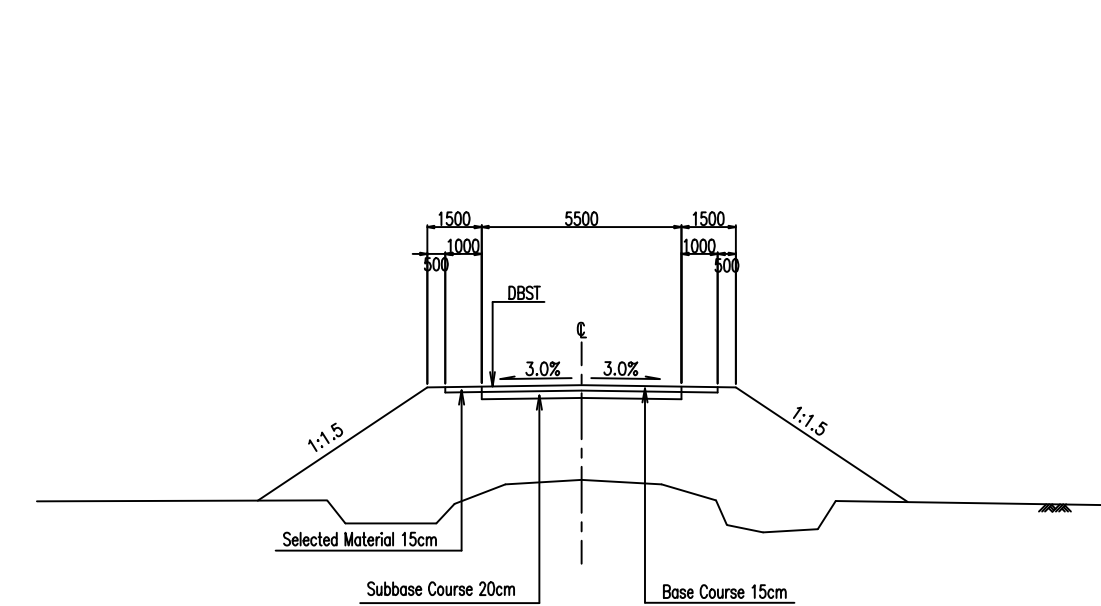
PLAN
S=1/1000



PROFILE
S=1/1000

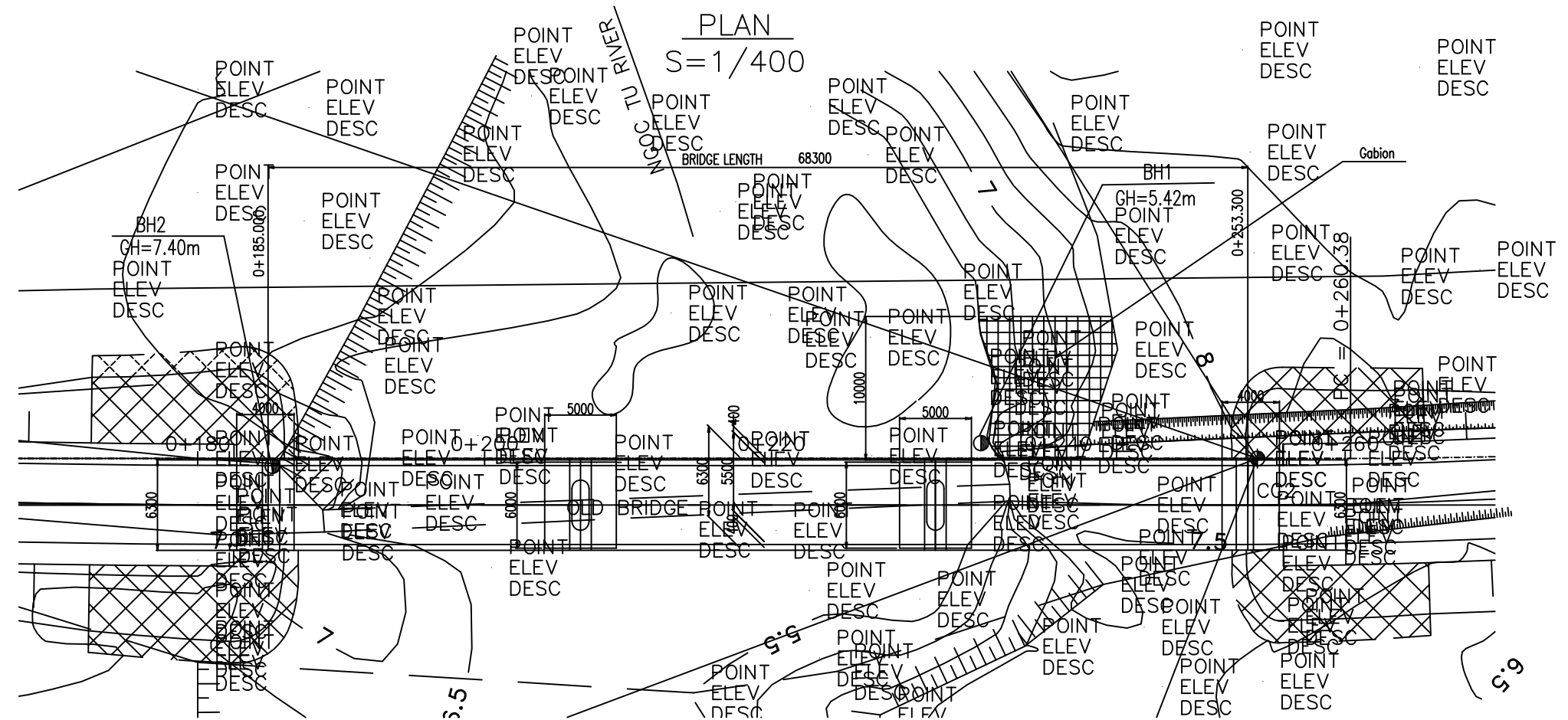
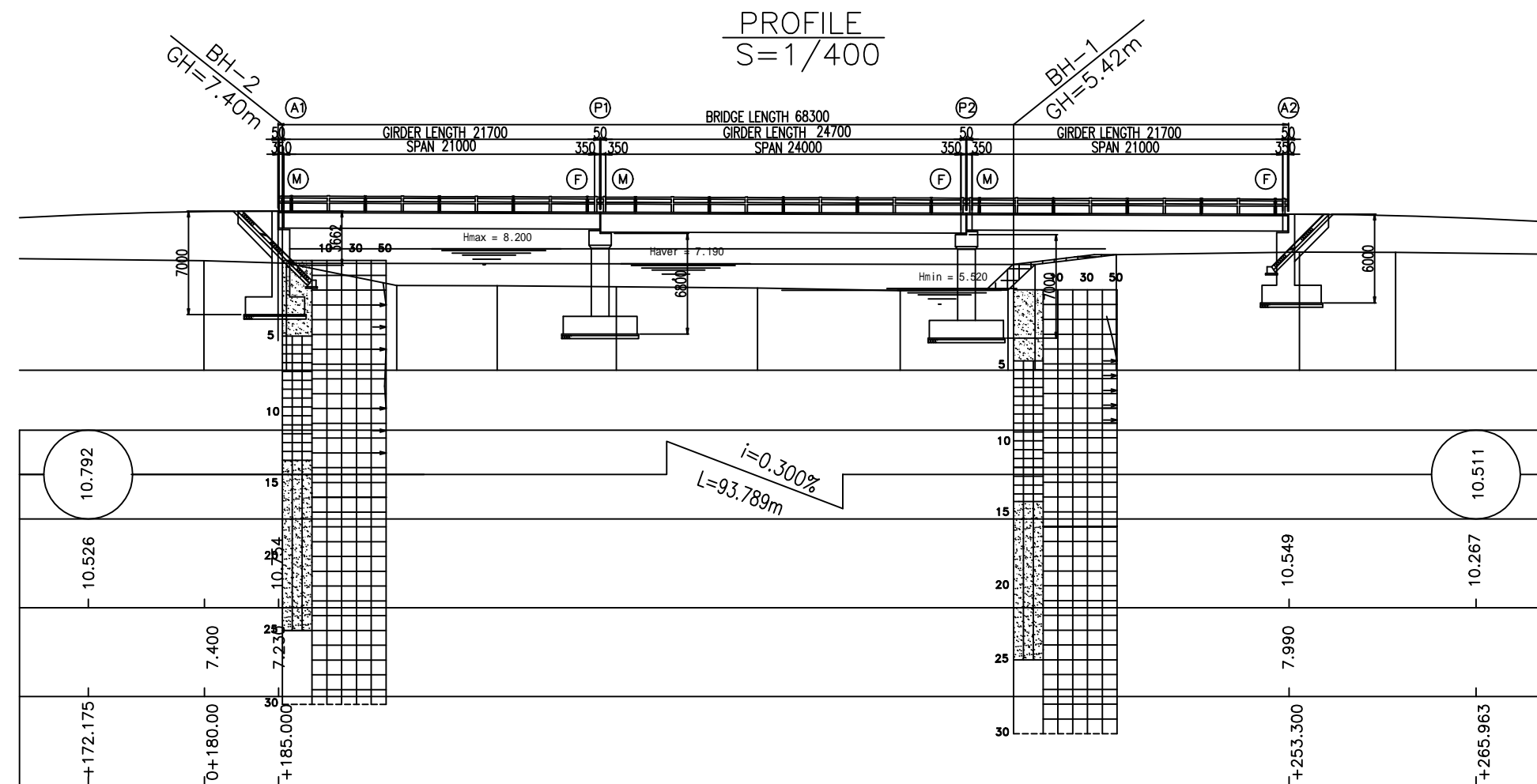


TYPICAL CROSS SECTION OF APPROACH ROAD
S=1/200

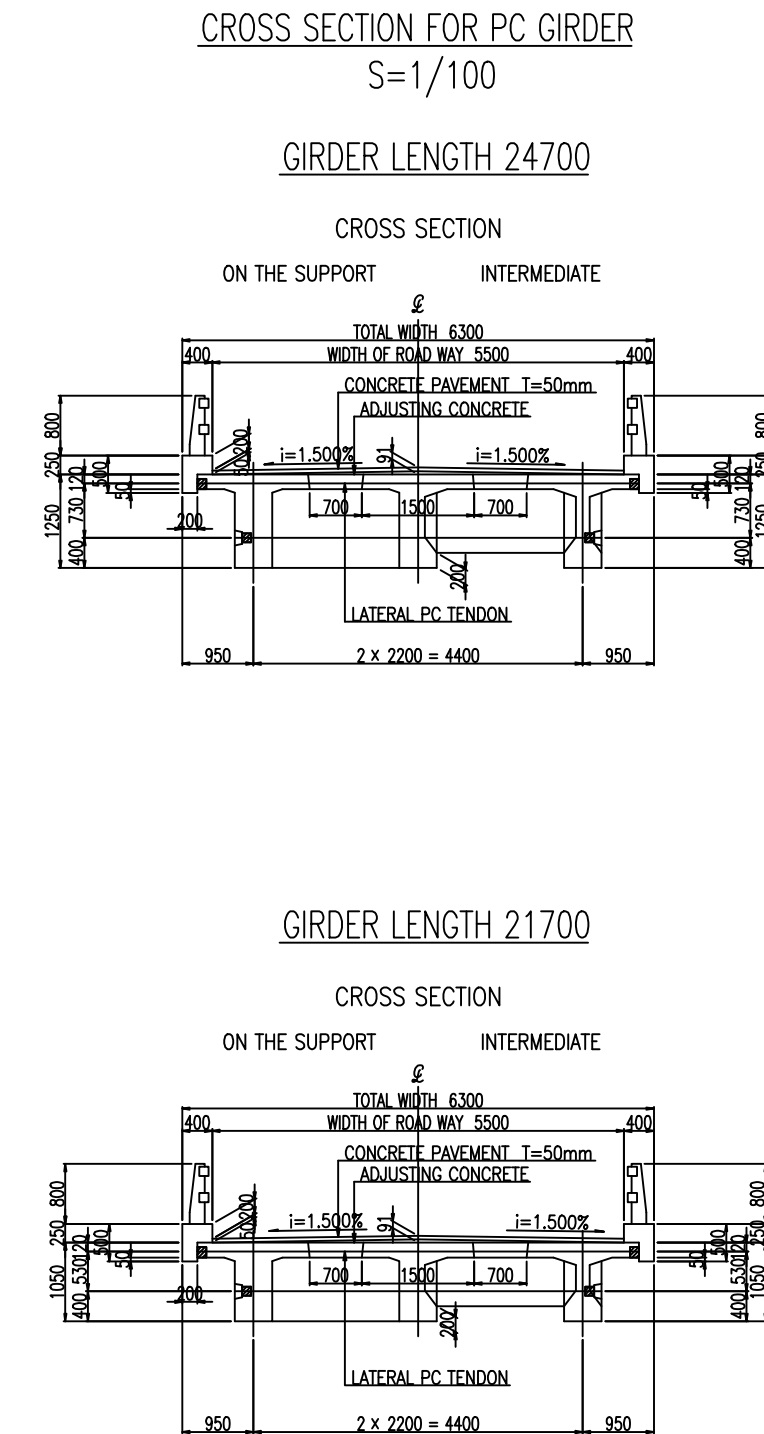
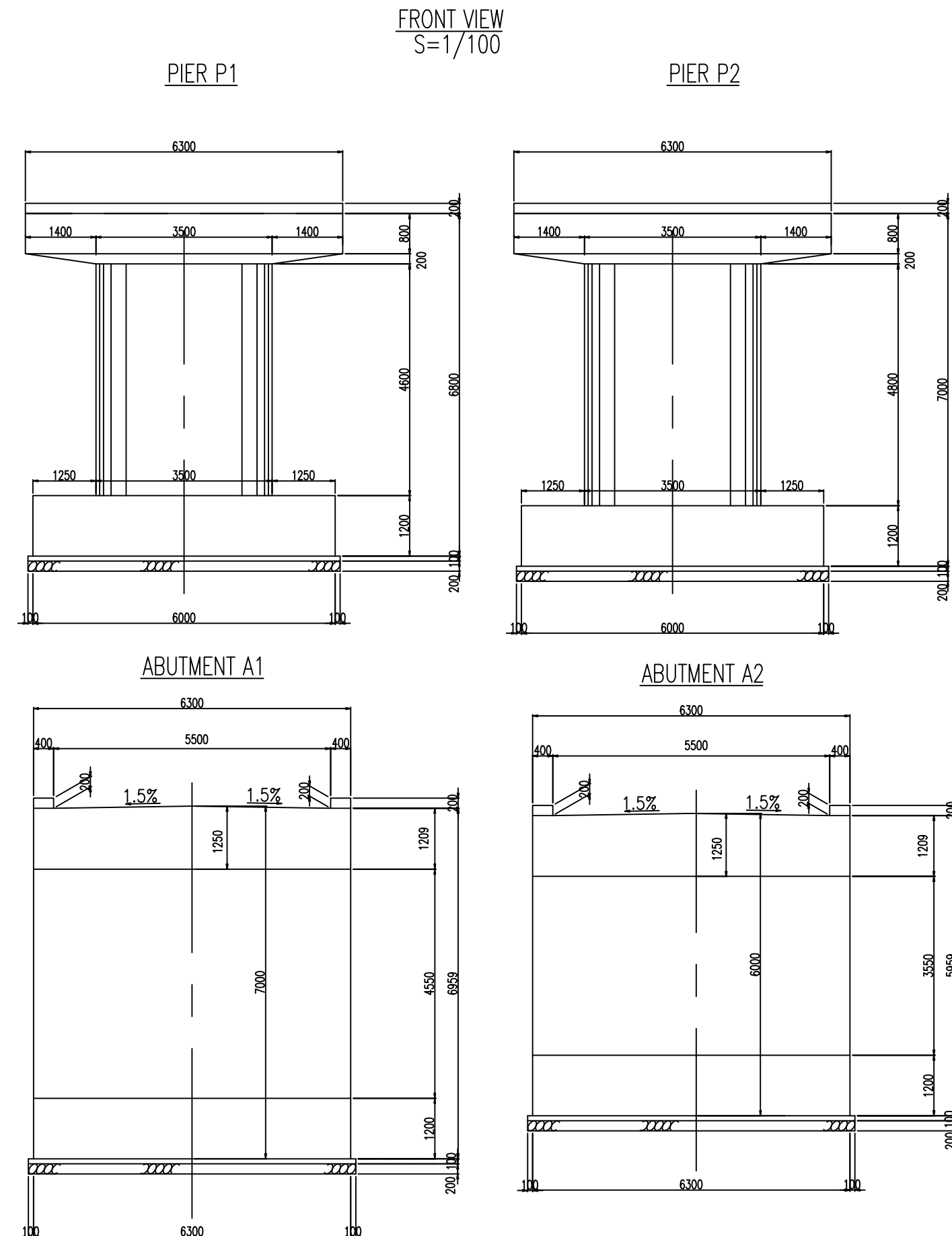


THE GOVERNMENT OF SOCIALIST REPUBLIC OF VIETNAM PROJECTS MANAGEMENT UNIT NO.18, MINISTRY OF TRANSPORTS				
PROJECT	THE PROJECT FOR RECONSTRUCTION OF BRIDGES IN THE CENTRAL AREA OF VIETNAM			
CONSULTANT	CONSORTIUM OF PACIFIC CONSULTANTS INTERNATIONAL AND ORIENTAL CONSULTANTS			
DESIGNED BY	Y.FURUKAWA	CHECKED BY	H.KENGO	APPROVED BY
NAME		DATE		
SIGNATURE		DATE		

GRADE	
PROPOSED HEIGHT	
GROUND HEIGHT	
STATION	



BR.NO.66 NGOC TU
GENERAL VIEW OF THE BRIDGE



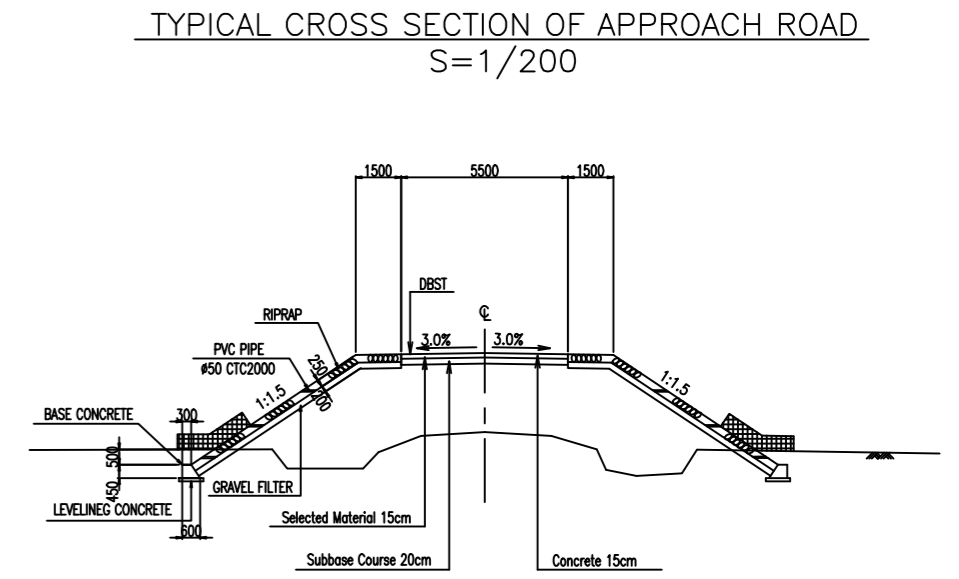
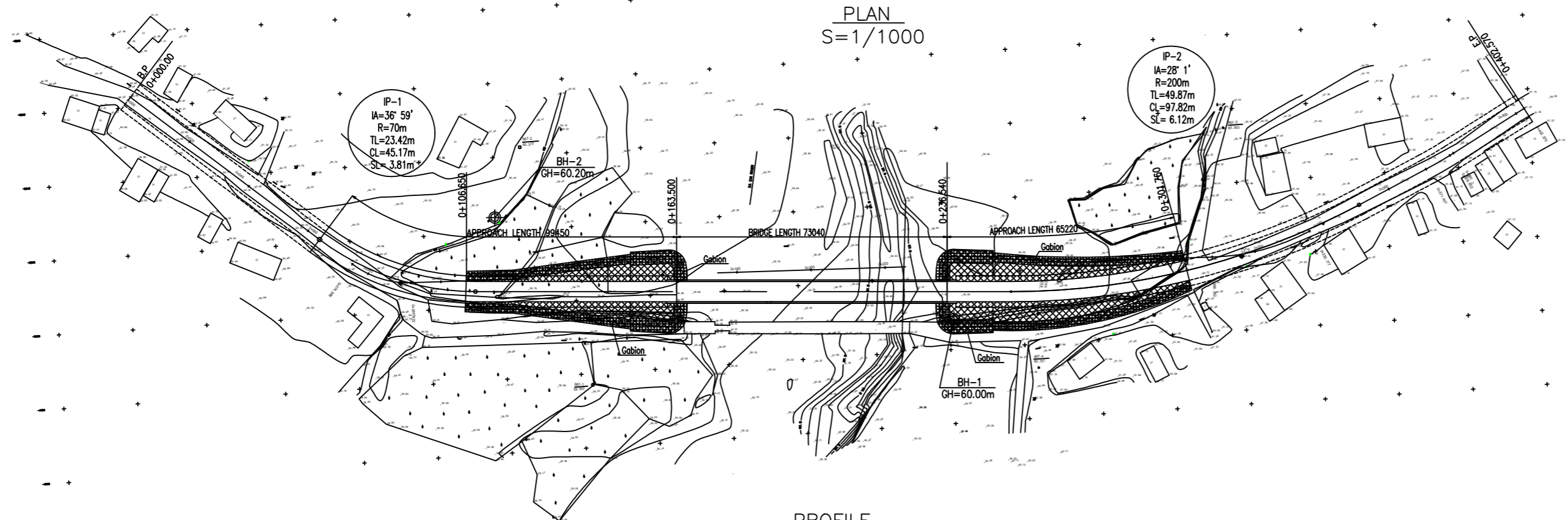
DESIGN CRITERIA		
General Condition		
Design Live Load	H13,X60	
Design Speed	V=25km/h	
Bridge Length(Span Length)	66.30m(21.00m+24.00m+21.00m)	
Free Board	1.0m	
Longitudinal Gradient	0.3%	
Cross-fall of Carriage way	1.50%	
Super Structure Type	Prestressed Concrete	
Sub Structure Type	Abutment	Reinforced Concrete
	Pier	Reinforced Concrete
Foundation Type	Abutment	Spread Foundation
	Pier	Spread Foundation
Material Strength		
Super Structure Type	Girder	$\sigma_{28}=35N/mm^2$
	Cross Beam	$\sigma_{28}=30N/mm^2$
	Slab	$\sigma_{28}=30N/mm^2$
Surface	Curb,Handrail	$\sigma_{28}=21N/mm^2$
Sub Structure Type		$\sigma_{28}=21N/mm^2$
Reinforcing Steel		S0295($p_y=295N/mm^2$)

SECTION	SCALE	DRAWING NO.	SHEET NO.
	1/100, 1/400	C-2	1 OF 1
DRAWING TITLE	BRIDGE STRUCTURE (BR.NO.66 NGOC TU)		
REV. NO.	DATE	DESCRIPTION	SIGNATURE

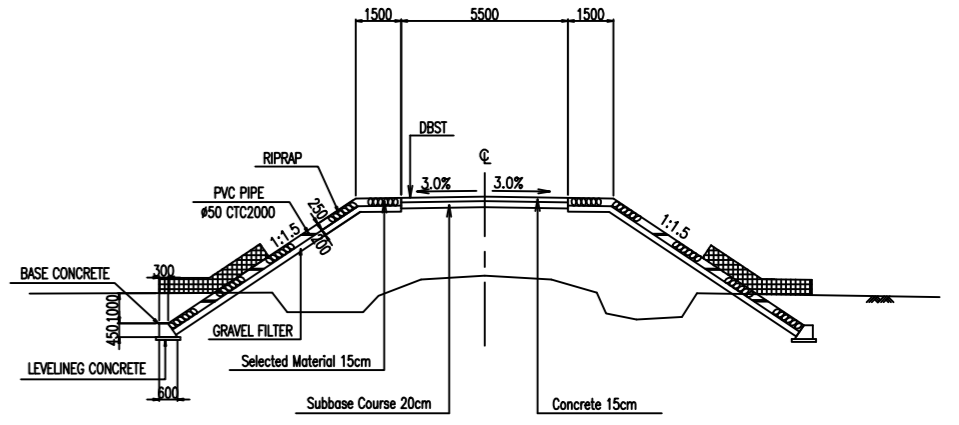
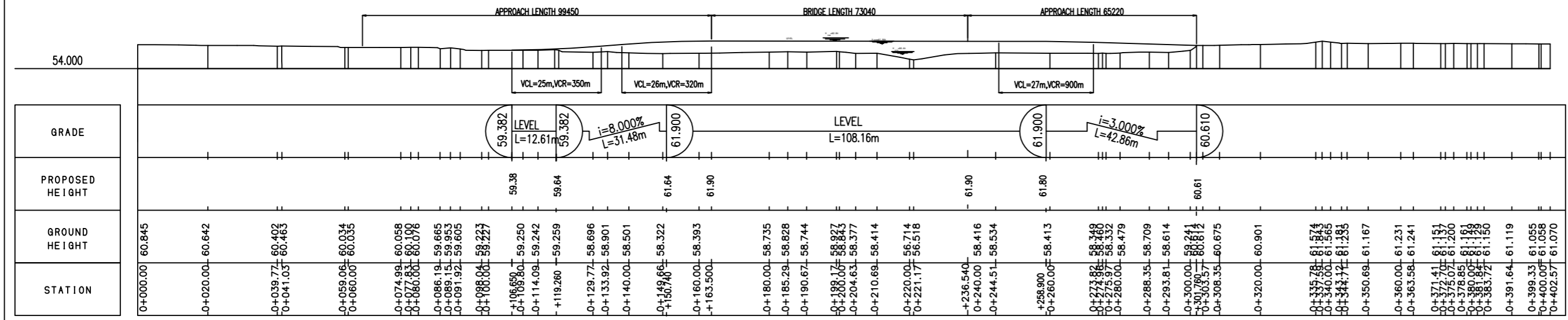
THE GOVERNMENT OF SOCIALIST REPUBLIC OF VIETNAM PROJECTS MANAGEMENT UNIT NO.16, MINISTRY OF TRANSPORTS			
PROJECT	THE PROJECT FOR RECONSTRUCTION OF BRIDGES IN THE CENTRAL AREA OF VIETNAM		
CONSULTANT	CONSORTIUM OF PACIFIC CONSULTANTS INTERNATIONAL AND ORIENTAL CONSULTANTS		
DESIGNED BY	CHECKED BY	APPROVED BY	
NAME	Y.FURUKAWA	HLENGO	DZUNG
SIGNATURE			
DATE			

BR.NO.67 XA CAI
GENERAL VIEW OF THE SITE

SECTION	SCALE	DRAWING NO.	SHEET NO.
	1/200, 1/1000	B#67-	1 OF 1
DRAWING TITLE	ROAD PLANNING (BR.NO.67 XA CAI)		
REV. NO.	DATE	DESCRIPTION	SIGNATURE



PROFILE
S=1/1000

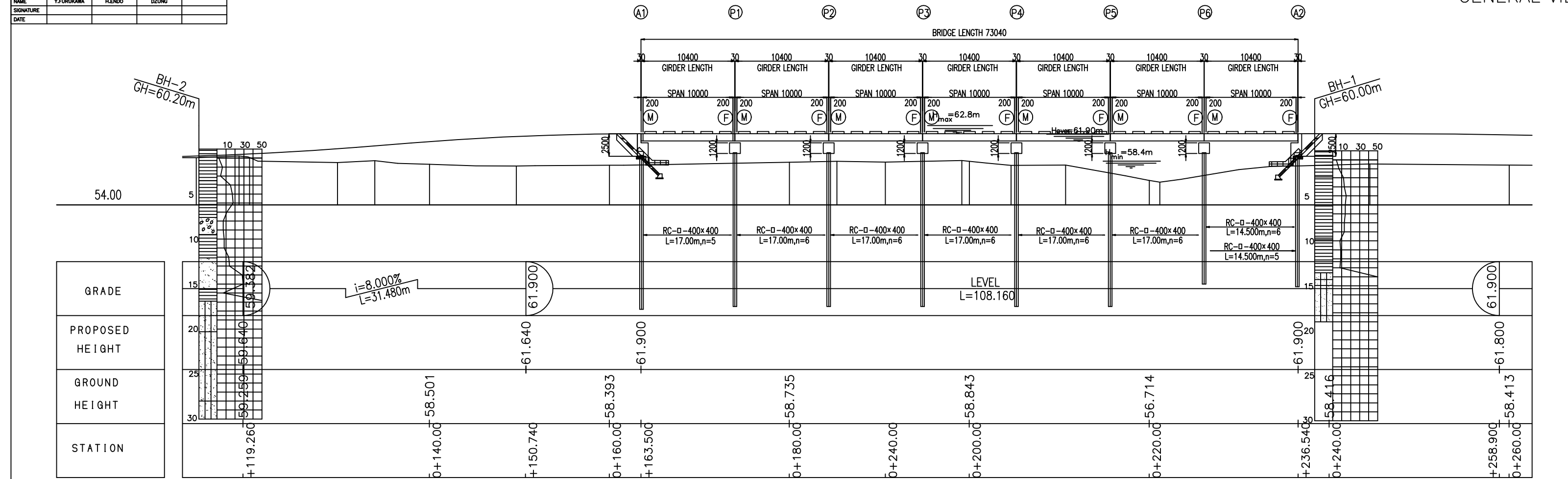


THE GOVERNMENT OF SOCIALIST REPUBLIC OF VIETNAM PROJECTS MANAGEMENT UNIT NO.16, MINISTRY OF TRANSPORTS			
PROJECT	THE PROJECT FOR RECONSTRUCTION OF BRIDGES IN THE CENTRAL AREA OF VIETNAM		
CONSULTANT	CONSORTIUM OF PACIFIC CONSULTANTS INTERNATIONAL AND ORIENTAL CONSULTANTS		
DESIGNED BY	Y.FURUKAWA	CHECKED BY	HEUNG
APPROVED BY		CHECKED BY	DELING
NAME		DATE	
SIGNATURE		DATE	

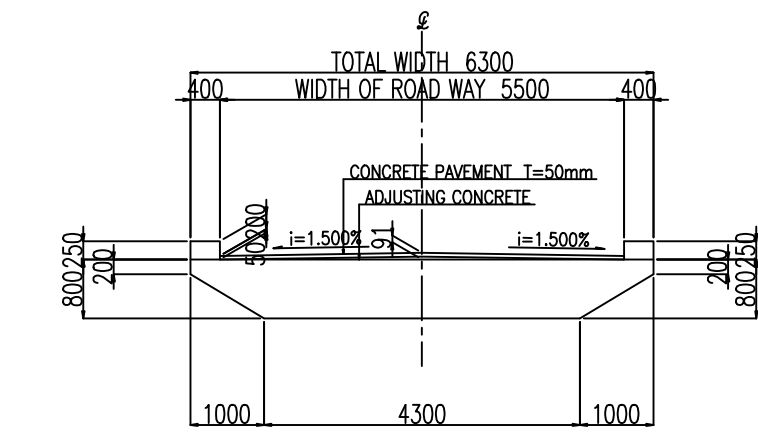
PROFILE
S=1/400

BR.NO.67 XA CAI
GENERAL VIEW OF THE BRIDGE

SECTION	SCALE	DRAWING NO.	SHEET NO.
	1/100,1/400	C-2	1 OF 1
DRAWING TITLE	BRIDGE STRUCTURE (BR.NO.67 XA CAI)		
REV. NO.	DATE	DESCRIPTION	SIGNATURE



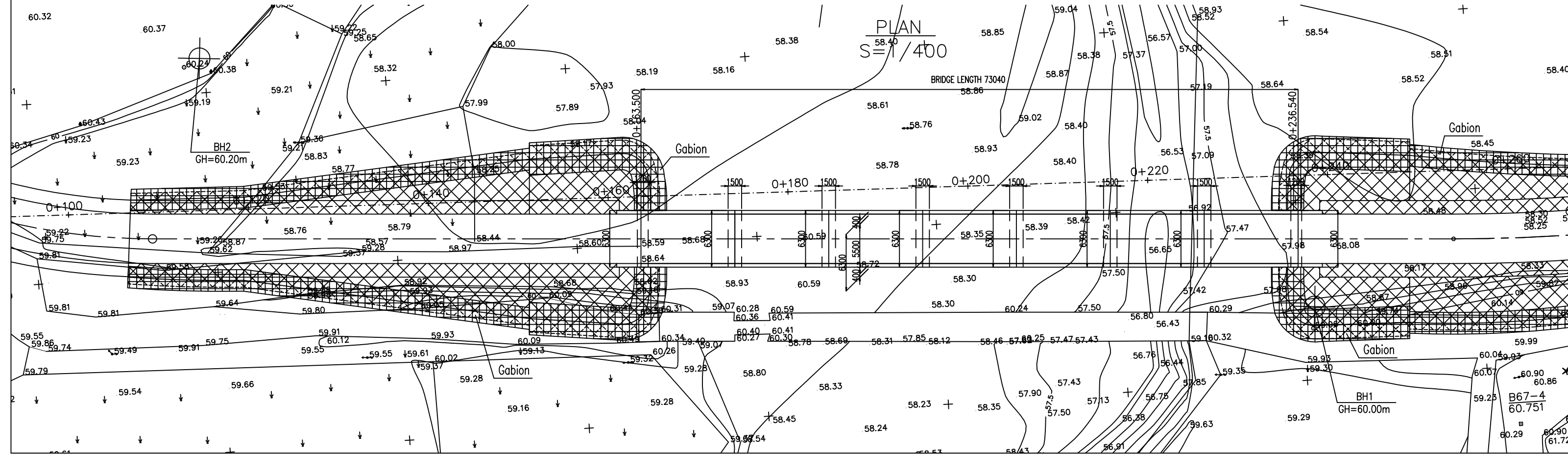
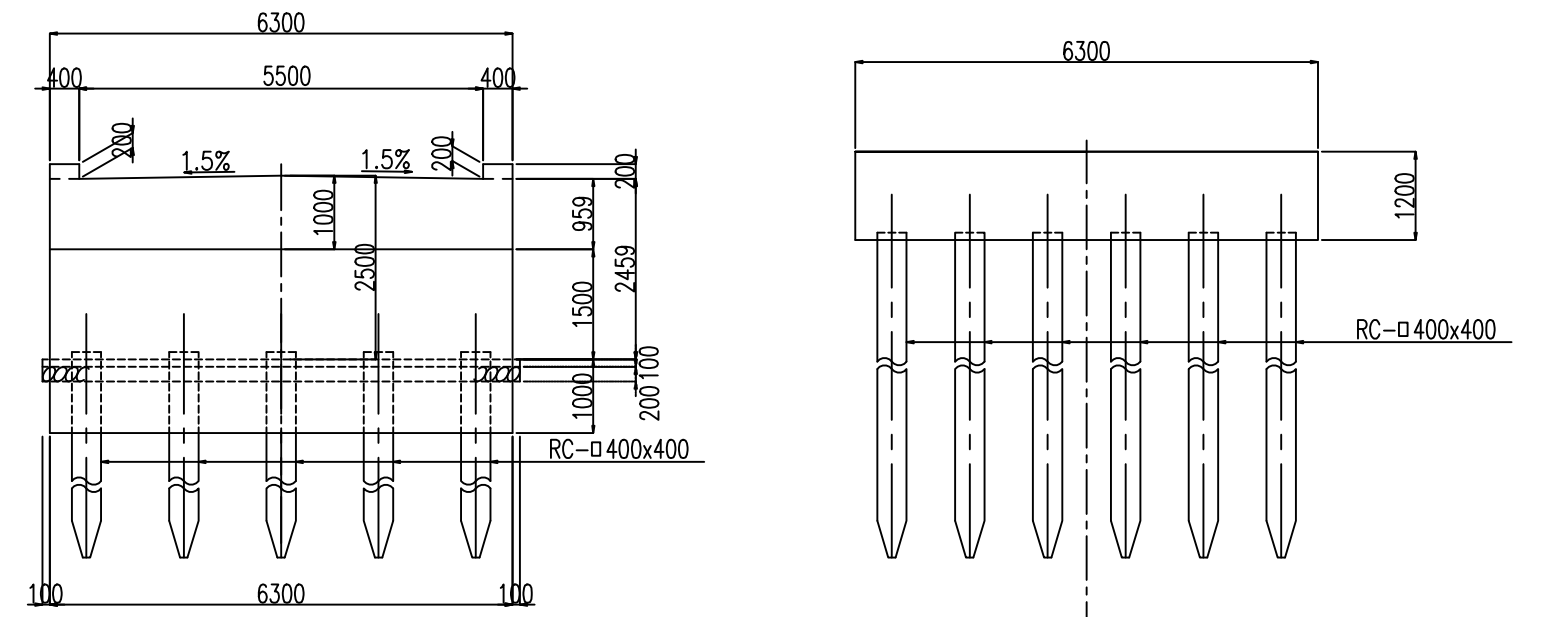
CROSS SECTION FOR RC GIRDER
S=1/100
GIRDER LENGTH 10400



ABUTMENT

FRONT VIEW
S=1/100

PIER



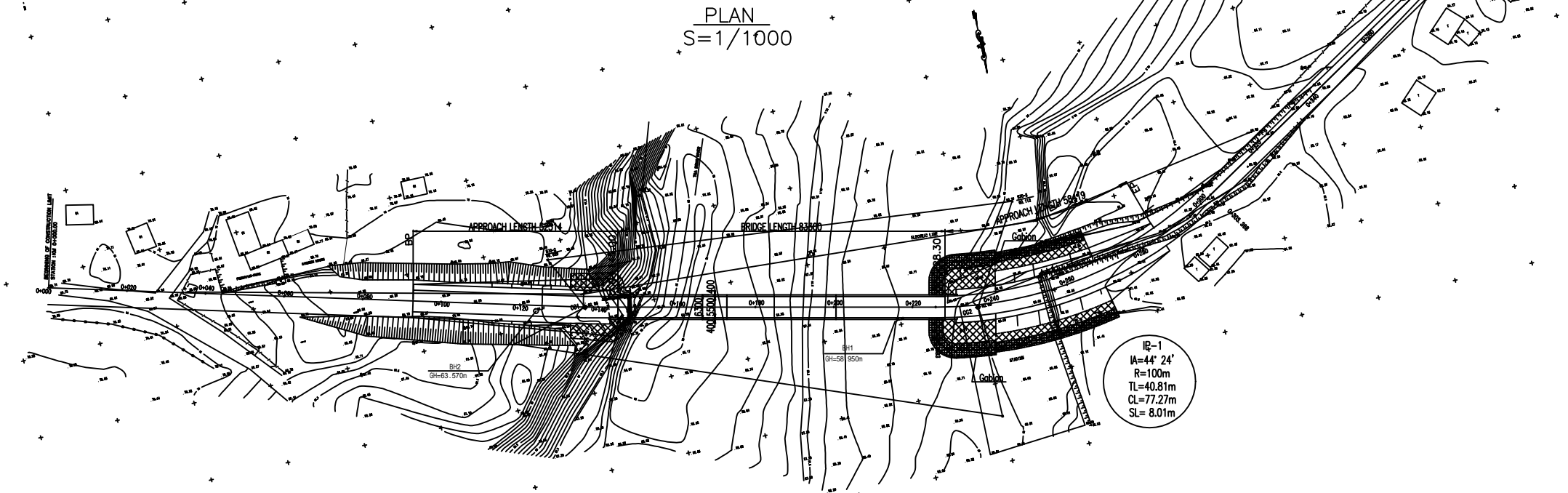
DESIGN CRITERIA

General Condition	
Design Live Load	H13.X60
Design Speed	V=25km/h
Bridge Length(Span Length)	73.04m(7@10.00m)
Free Board	
Longitudinal Gradient	0.3%
Cross-fall of Carriage way	1.50%
Super Structure Type	Reinforced Concrete
Sub Structure Type	Abutment Reinforced Concrete
	Pier Reinforced Concrete
Foundation Type	Abutment Rc Pile Ø400x400
	Pier Rc Pile Ø400x400
Material Strength	
Super Structure Type	Slab $\sigma_{28}=30N/mm^2$
Surface	Curb, Handrail $\sigma_{28}=21N/mm^2$
Sub Structure Type	$\sigma_{28}=21N/mm^2$
Reinforcing Steel	SD295($\sigma_y=295N/mm^2$)

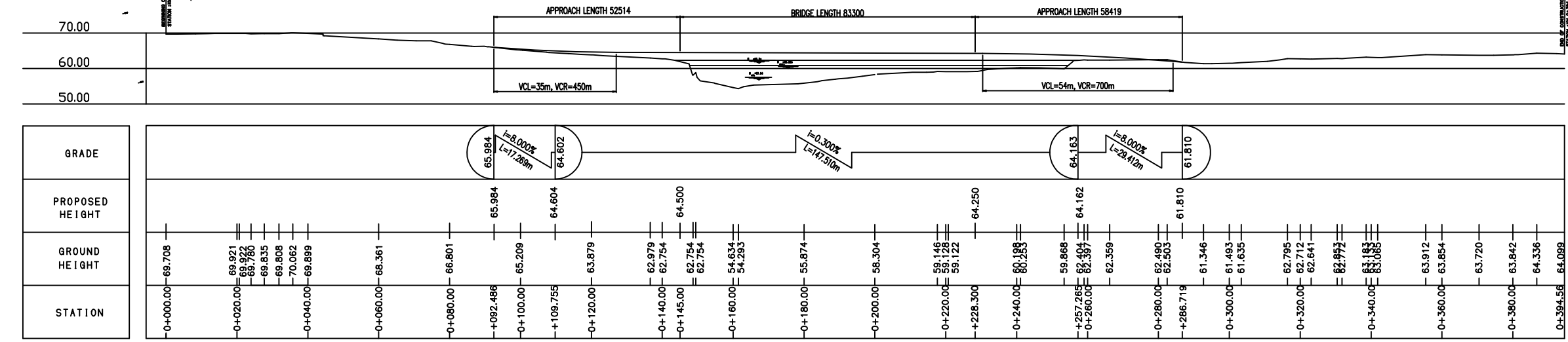
THE GOVERNMENT OF SOCIALIST REPUBLIC OF VIETNAM PROJECTS MANAGEMENT UNIT NO.16, MINISTRY OF TRANSPORTS				
PROJECT	THE PROJECT FOR RECONSTRUCTION OF BRIDGES IN THE CENTRAL AREA OF VIETNAM			
CONSULTANT	CONSULTING OF PACIFIC CONSULTANTS INTERNATIONAL AND OTHERS CONSULTANTS			
DESIGNED BY	Y. J. L. R. A. G. A. M.	CHECKED BY	Y. J. L. R. A. G. A. M.	APPROVED BY
NAME	Y. J. L. R. A. G. A. M.	DATE		
SIGNATURE				
DATE				

SECTION	SCALE	DRAWING NO.	SHEET NO.
	1/200, 1/1000	B/70	1 OF 1
DRAWING TITLE	ROAD PLANNING (BR.NO.70 DO)		
REV. NO.	DATE	DESCRIPTION	SIGNATURE

BR.NO.70 DO
GENERAL VIEW OF THE SITE



PROFILE*
S=1/1000



TYPICAL CROSS SECTION OF APPROACH ROAD
S=1/200

