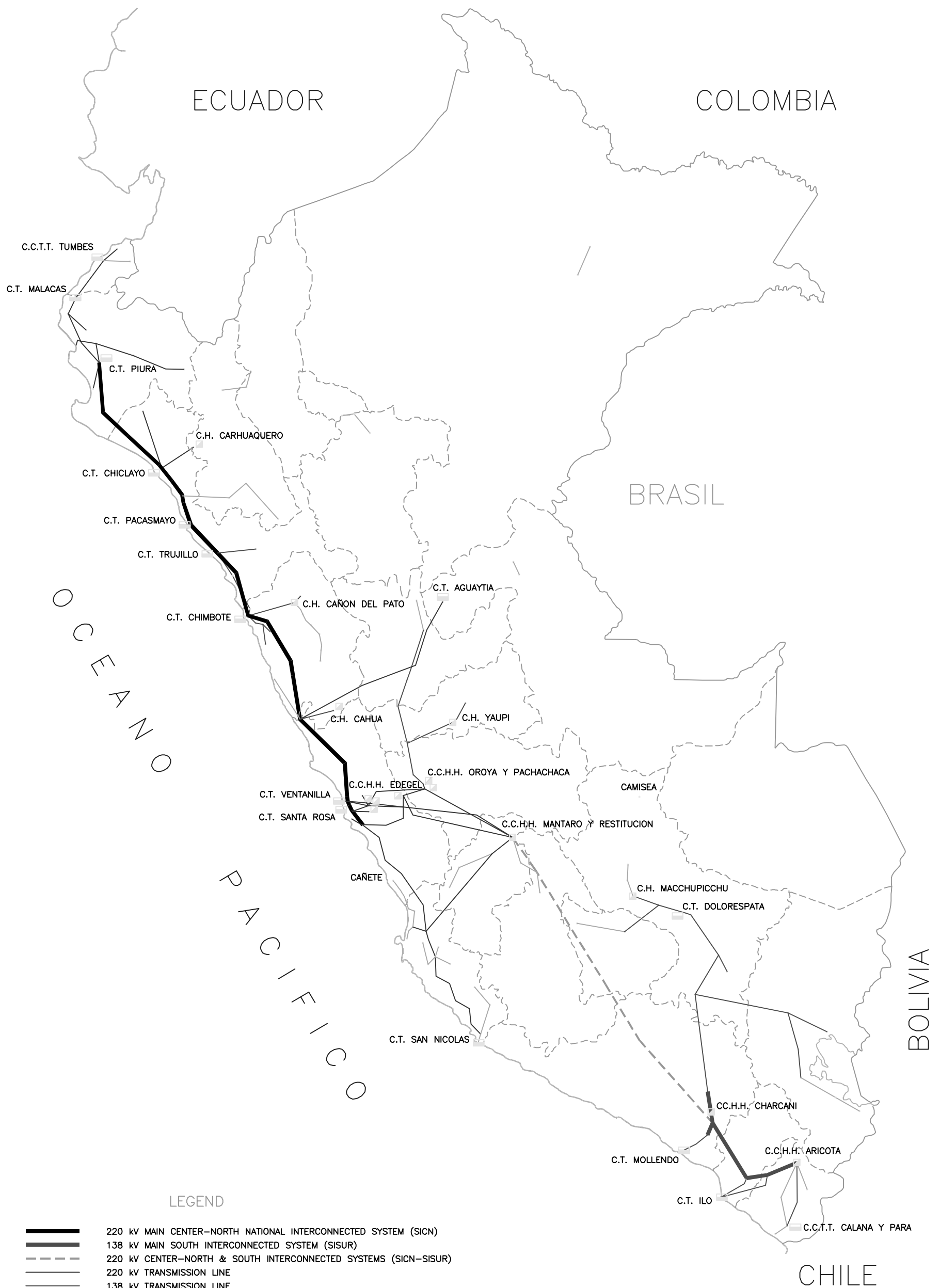










Figure 7
 Map on Irrigation Areas



LEGEND

-  220 kV MAIN CENTER-NORTH NATIONAL INTERCONNECTED SYSTEM (SICN)
-  138 kV MAIN SOUTH INTERCONNECTED SYSTEM (SISUR)
-  220 kV CENTER-NORTH & SOUTH INTERCONNECTED SYSTEMS (SICN-SISUR)
-  220 kV TRANSMISSION LINE
-  138 kV TRANSMISSION LINE
-  69-60 kV TRANSMISSION LINE
-  HYDROPOWER
-  THERMAL STATION

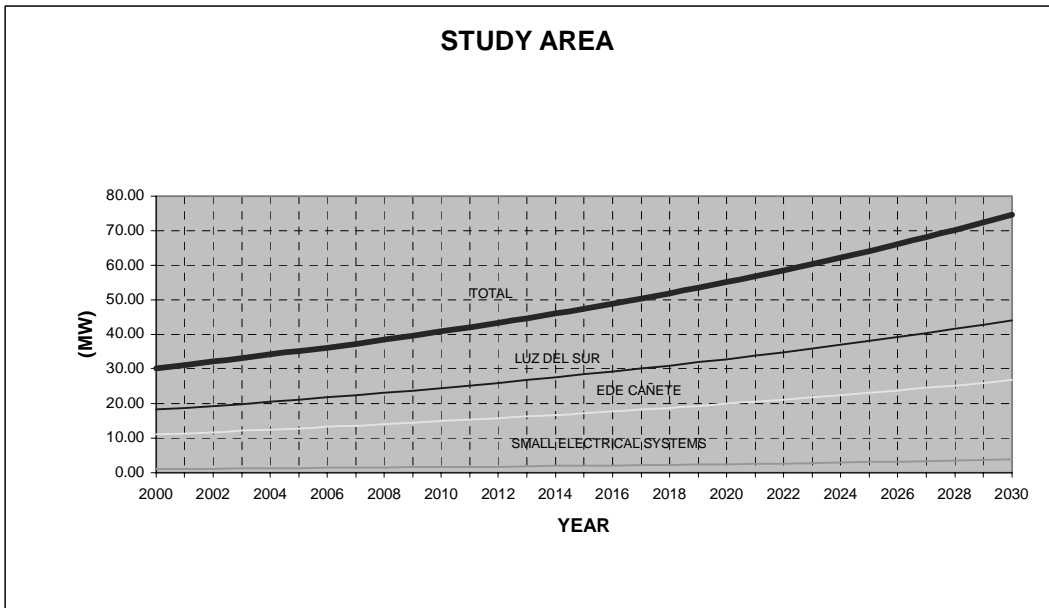
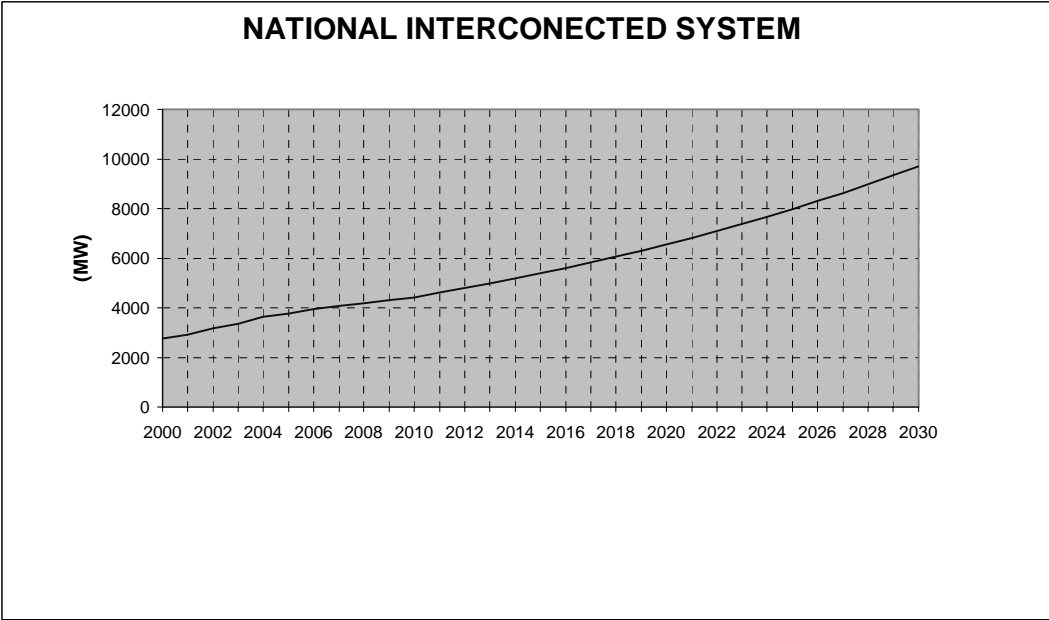
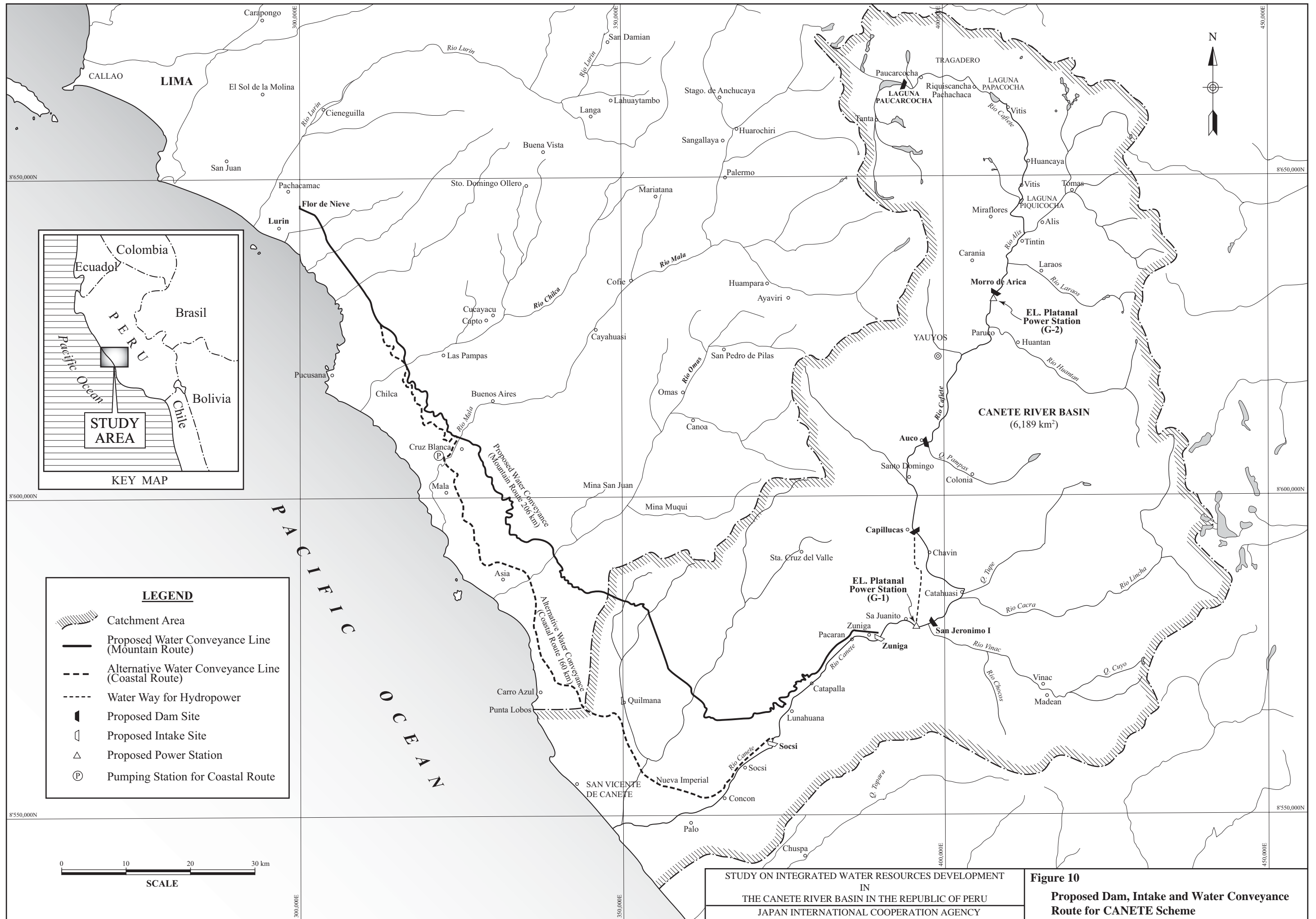
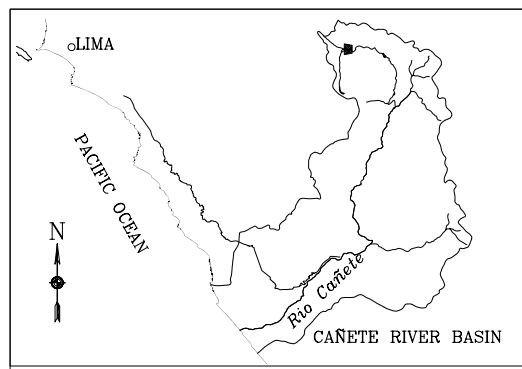
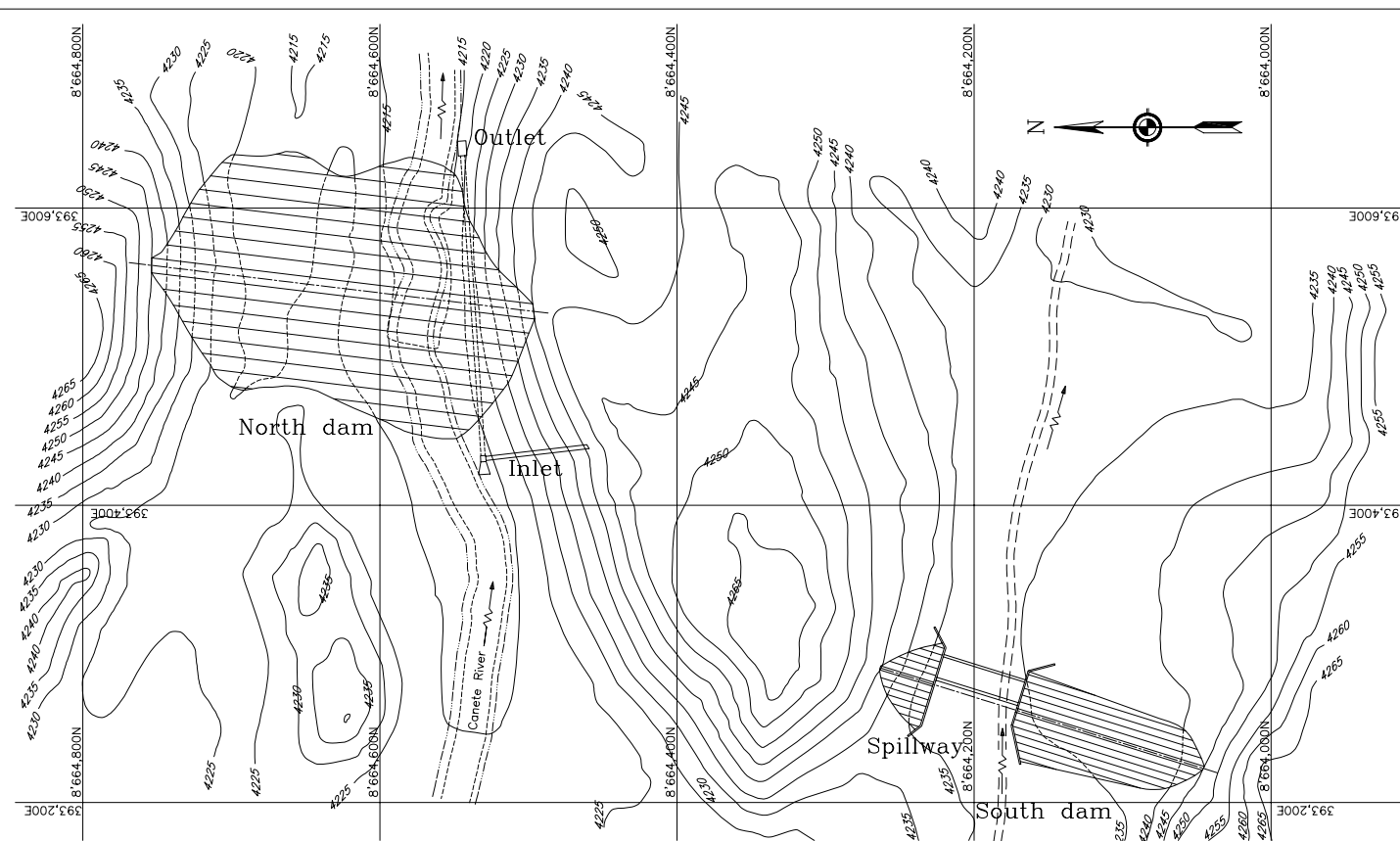


Figure 9
Projection of the Maximum Power Demand
2000 - 2030

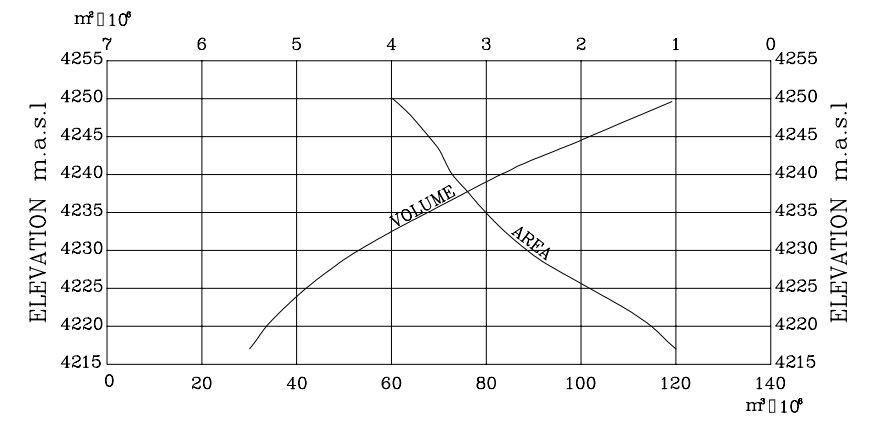
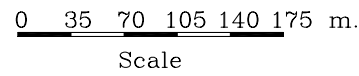




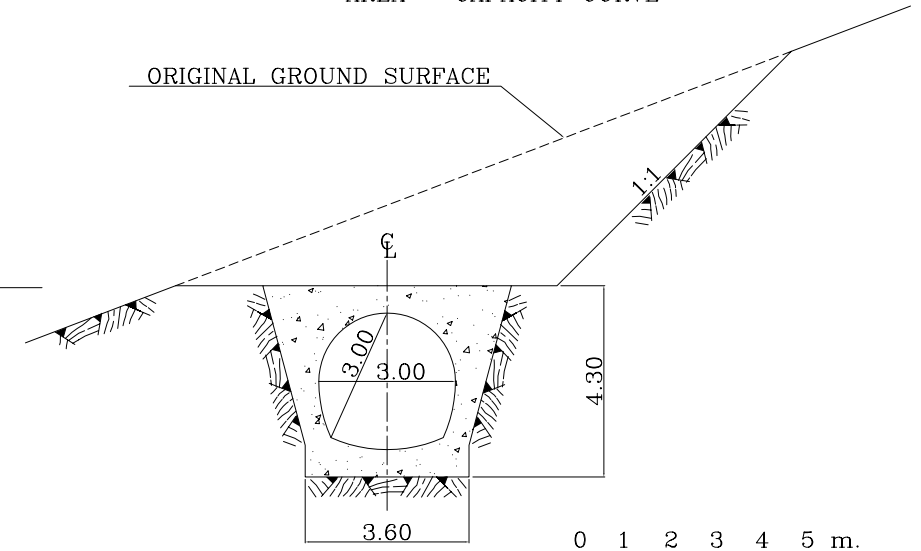
KEY MAP



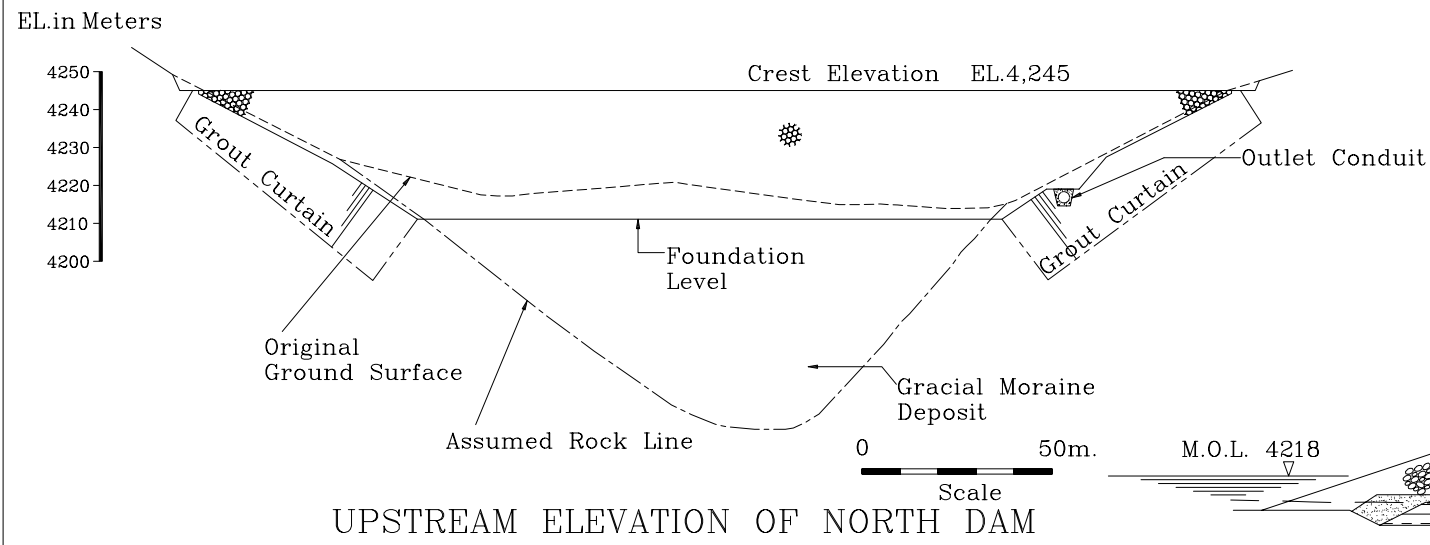
PLAN



PAUCARCOCHA DAM
AREA - CAPACITY CURVE

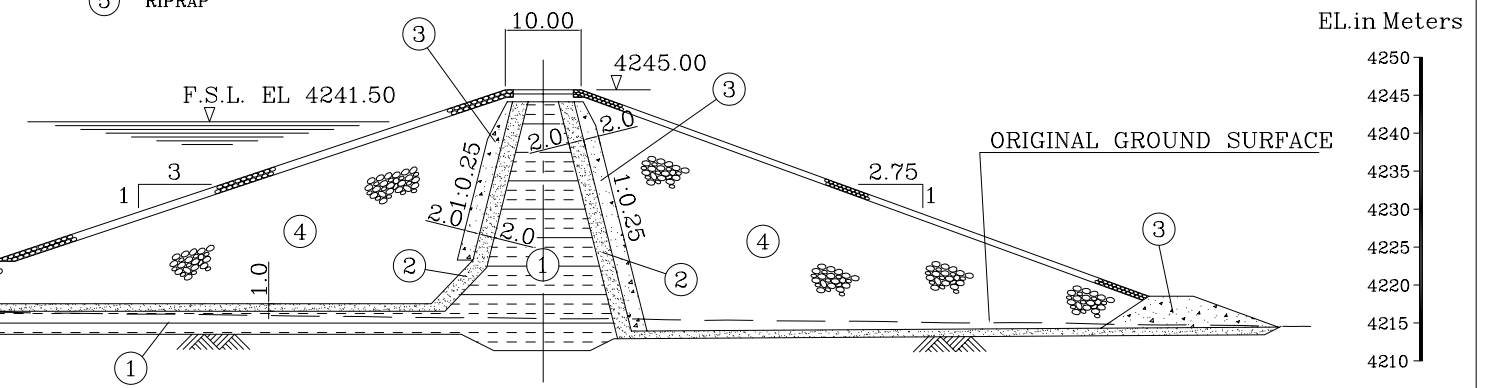


SECTION OF DIVERSION CONDUIT

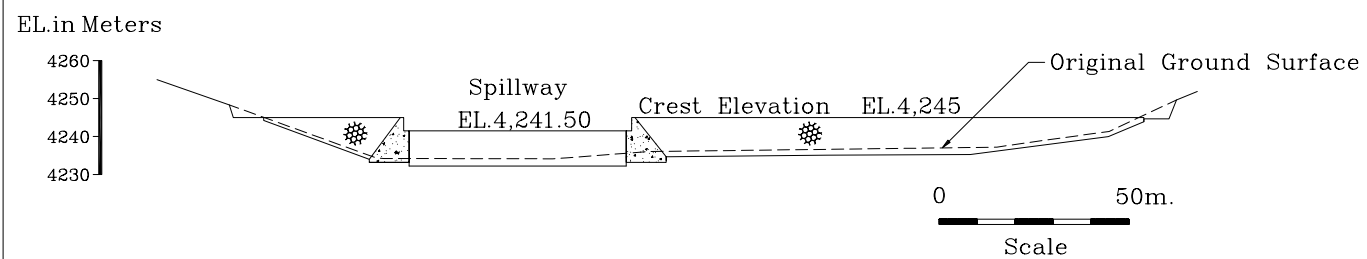


UPSTREAM ELEVATION OF NORTH DAM

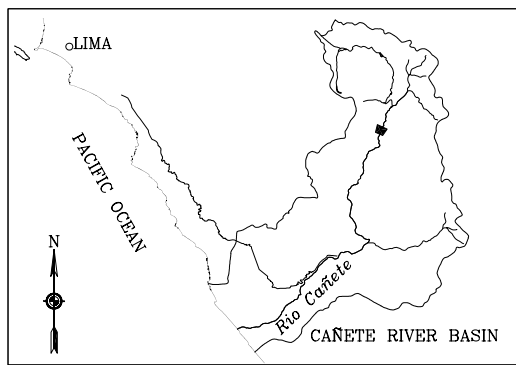
- LEGEND
- ① IMPERVIOUS CORE
 - ② FINE FILTER
 - ③ COURSE FILTER
 - ④ PERVIOUS GRANULAR FILL
 - ⑤ RIPRAP



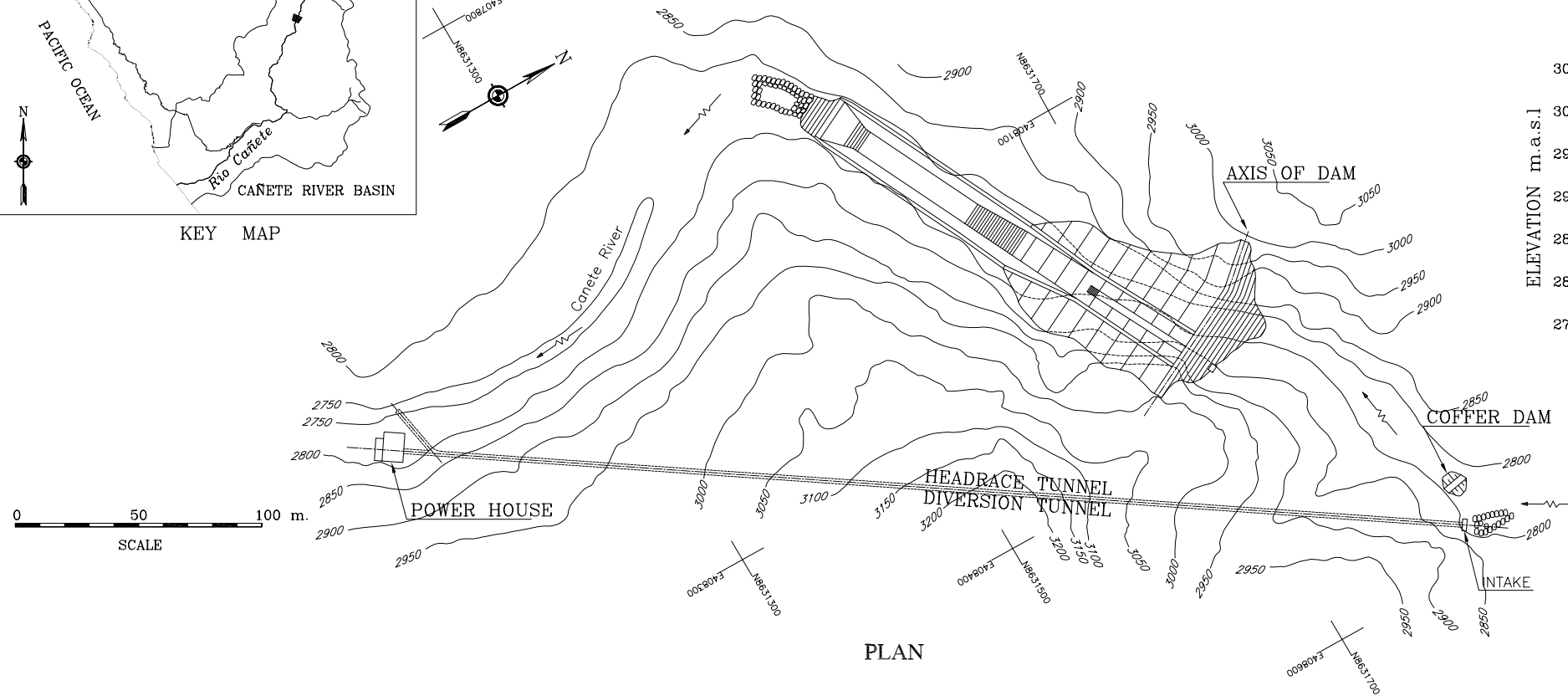
TYPICAL SECTION OF NORTH DAM



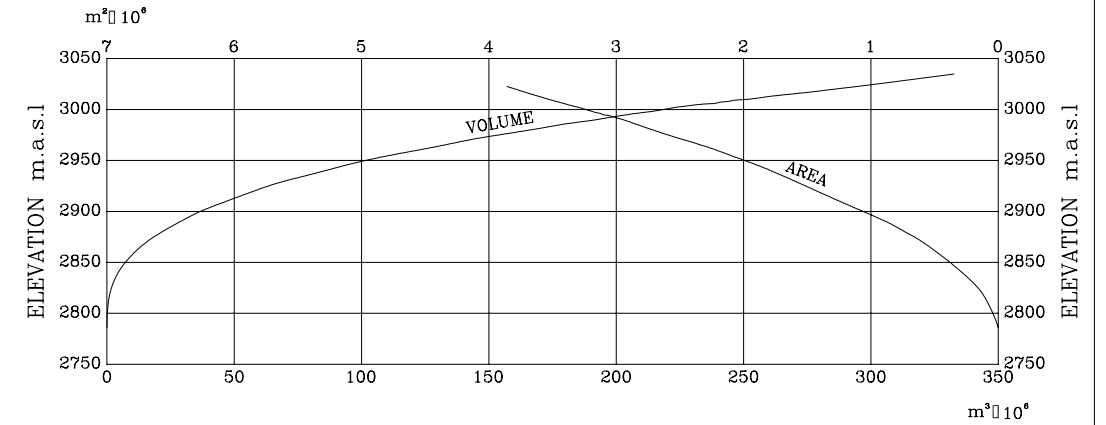
UPSTREAM ELEVATION OF SOUTH DAM



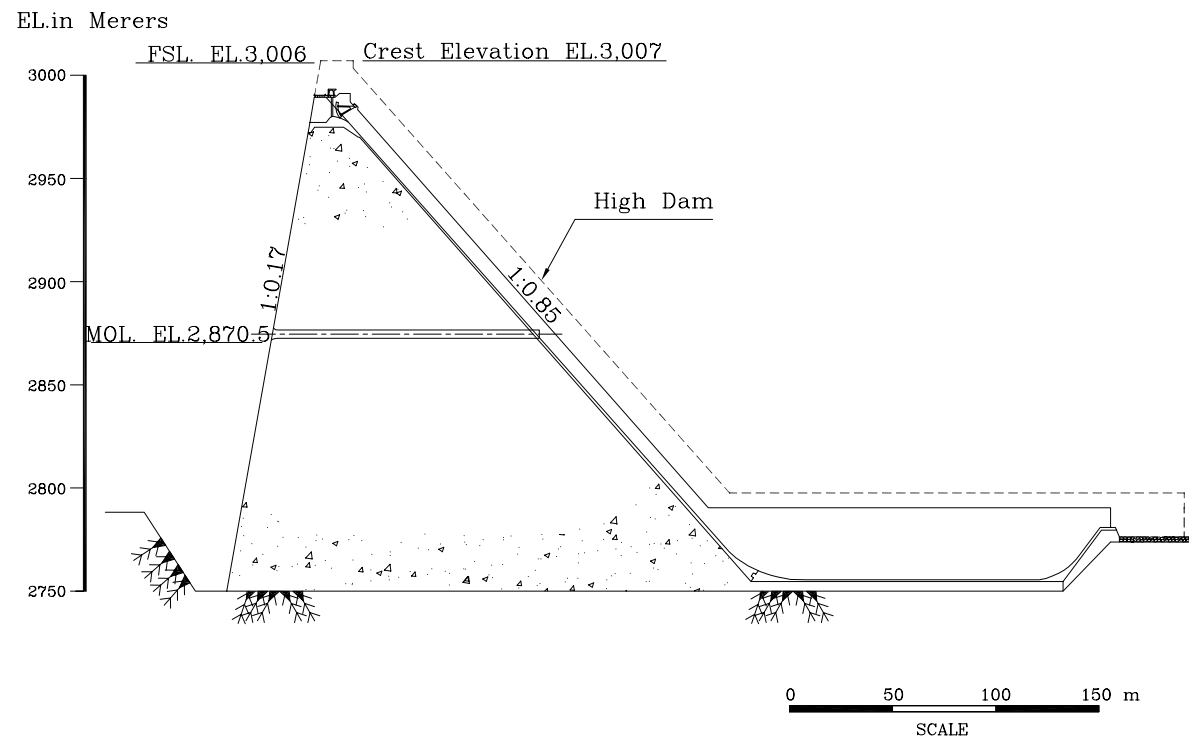
KEY MAP



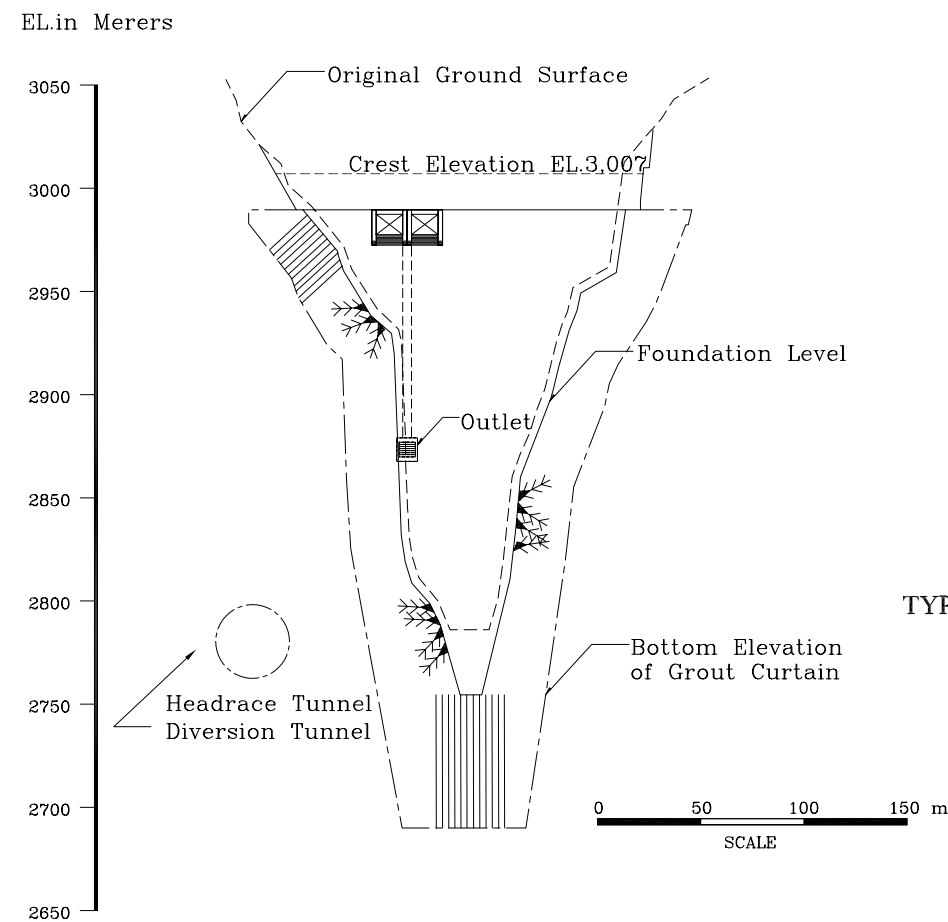
PLAN



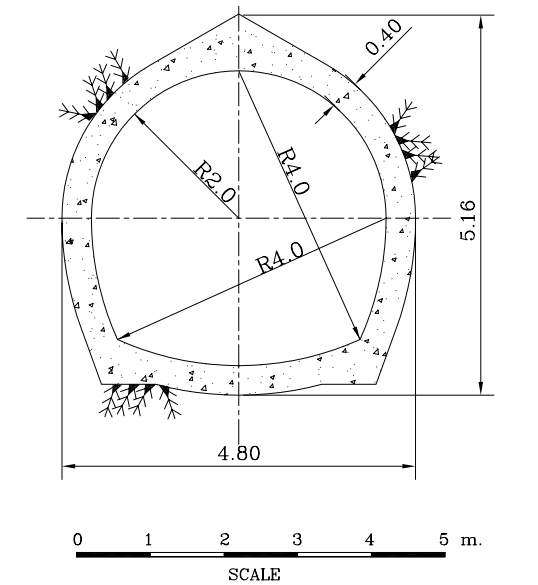
MORRO DE ARICA DAM
AREA-CAPACITY CURVE



TYPICAL CROSS SECTION OF DAM



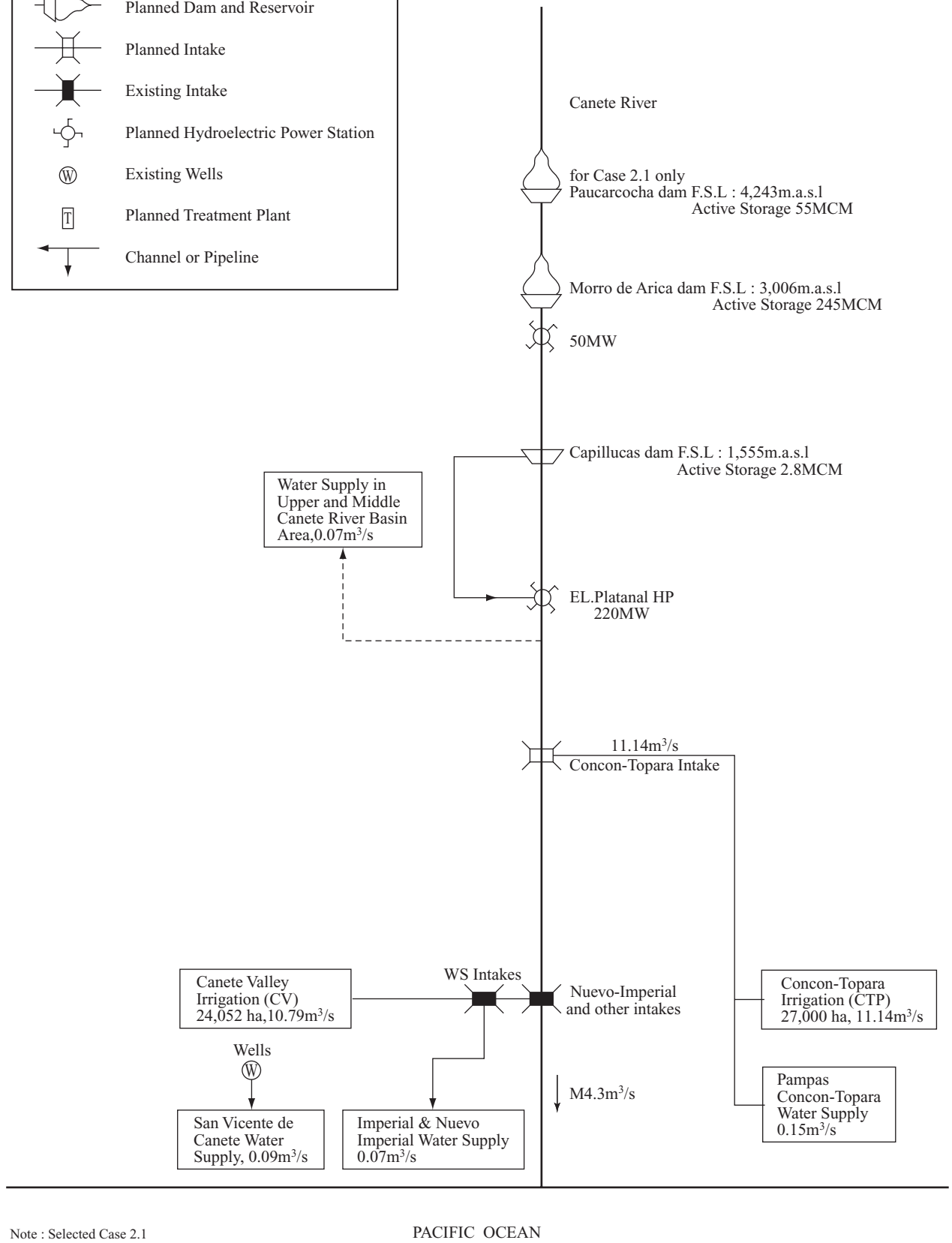
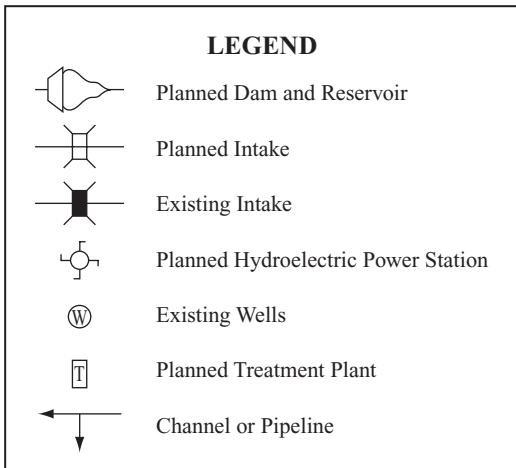
UPSTREAM ELEVATION

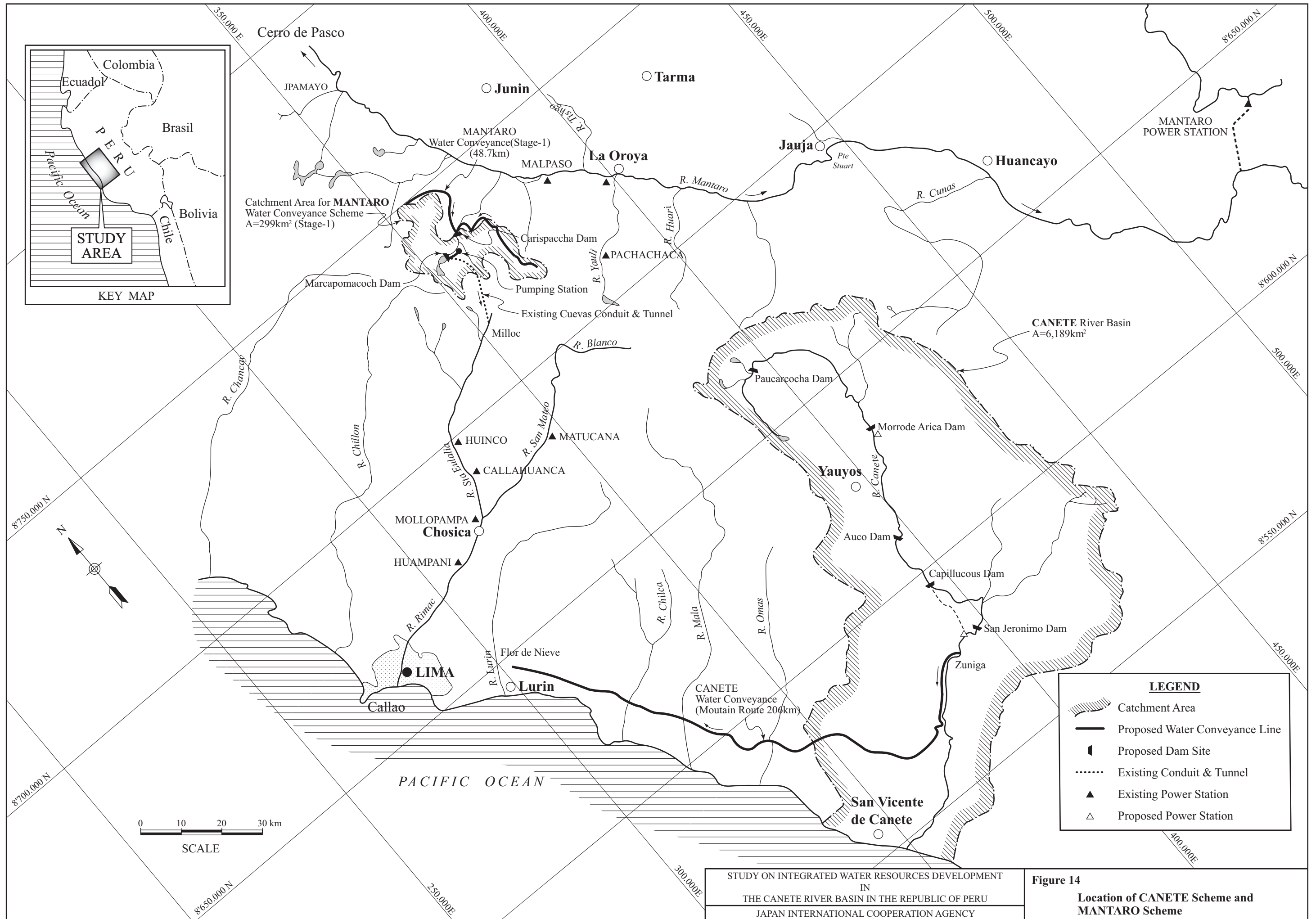


TYPICAL SECTION OF HEADRACE TUNNEL

Notes:

- 1) Original design prepared by ARPL TECHNOLOGIA INDUSTRIAL S.A.
- 2) Crest Elevation(EL.3,007), FSL(EL.3,006), MOL(EL.2,870.5) for high dam are proposed by the JICA Study Team.



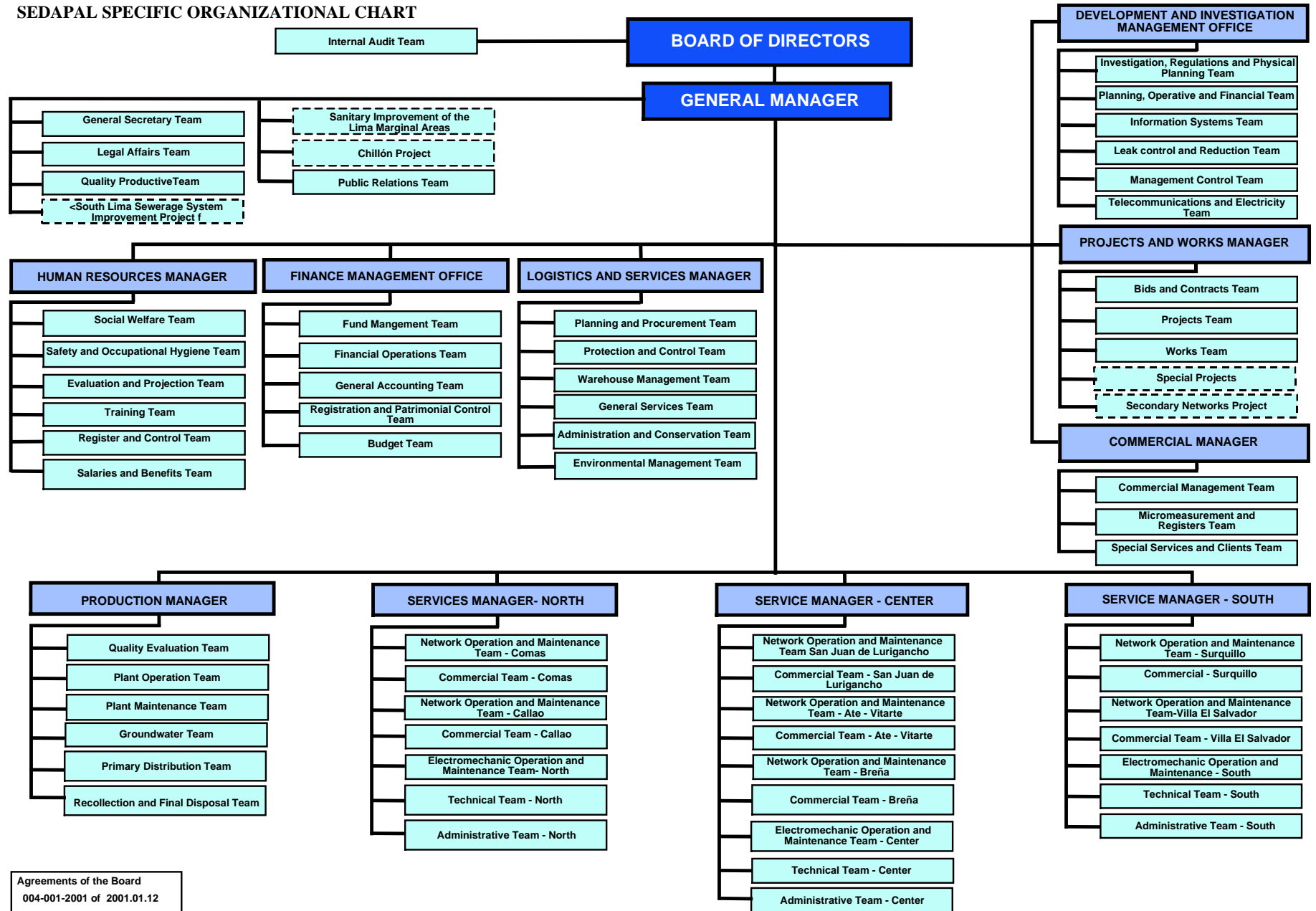


Implementation Schedule of Water Resources Development Projects

Project	Dimension	Status	Calendar year														Remarks
			2000	2001	2002	2003	2004	2005	2006	2007	2008	2009	2010	2011	2012		
D/I Water Supply																	
(1) To Lima	5 m ³ /s	New														F/S suspended	
(2) To Cañete basin	0.87 m ³ /s	New	-----														Start of operation in 2021/2026
(3) To Concón-Topará	0.15 m ³ /s	New				■					▼						Schedule by Cementos Lima
Agriculture (Irrigation)																	
(1) Cañete Valley	24,000 ha	Rehabili.	■				▼									On-going	
(2) Concón-Topará	27,000 ha	New				■									▼		Assumed 10 year plan starting 2003
Hydropower																	
(1) Morro de Arica	50 MW	New				■			▼							Schedule by Cementos Lima	
(2) El Platanal	220 MW	New				■			▼							ditto	

Legend:
 Stepwise Implementation
 Implementation (Design and Construction)
▼ Start of Operation

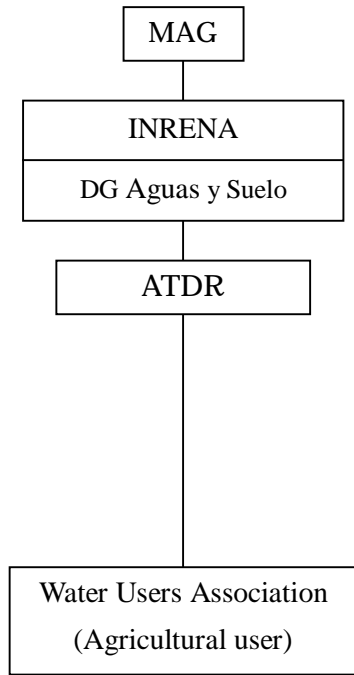
SEDAPAL SPECIFIC ORGANIZATIONAL CHART



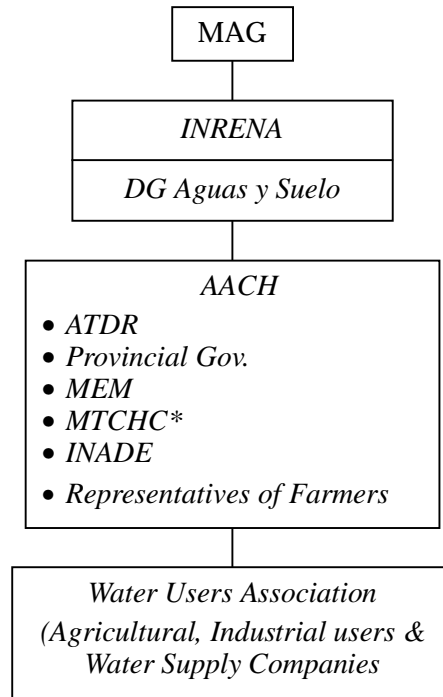
Agreements of the Board
 004-001-2001 of 2001.01.12

Figure 16
 Organization Chart of SEDAPAL

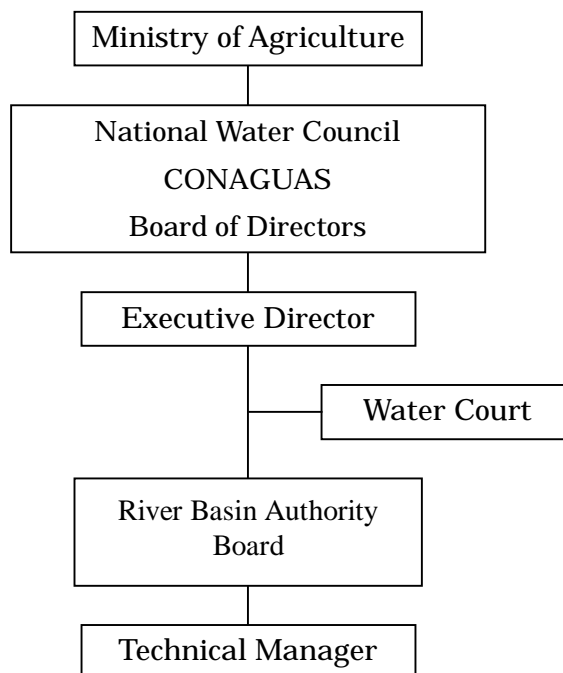
River administration in 1999



(Proposed in 1999)



River administration after July 2001



*MTCHC = Ministry of Transportation,
Communication, Housing and Construction