

Upstream



Downstream

Irrigation Intake at New Imperial



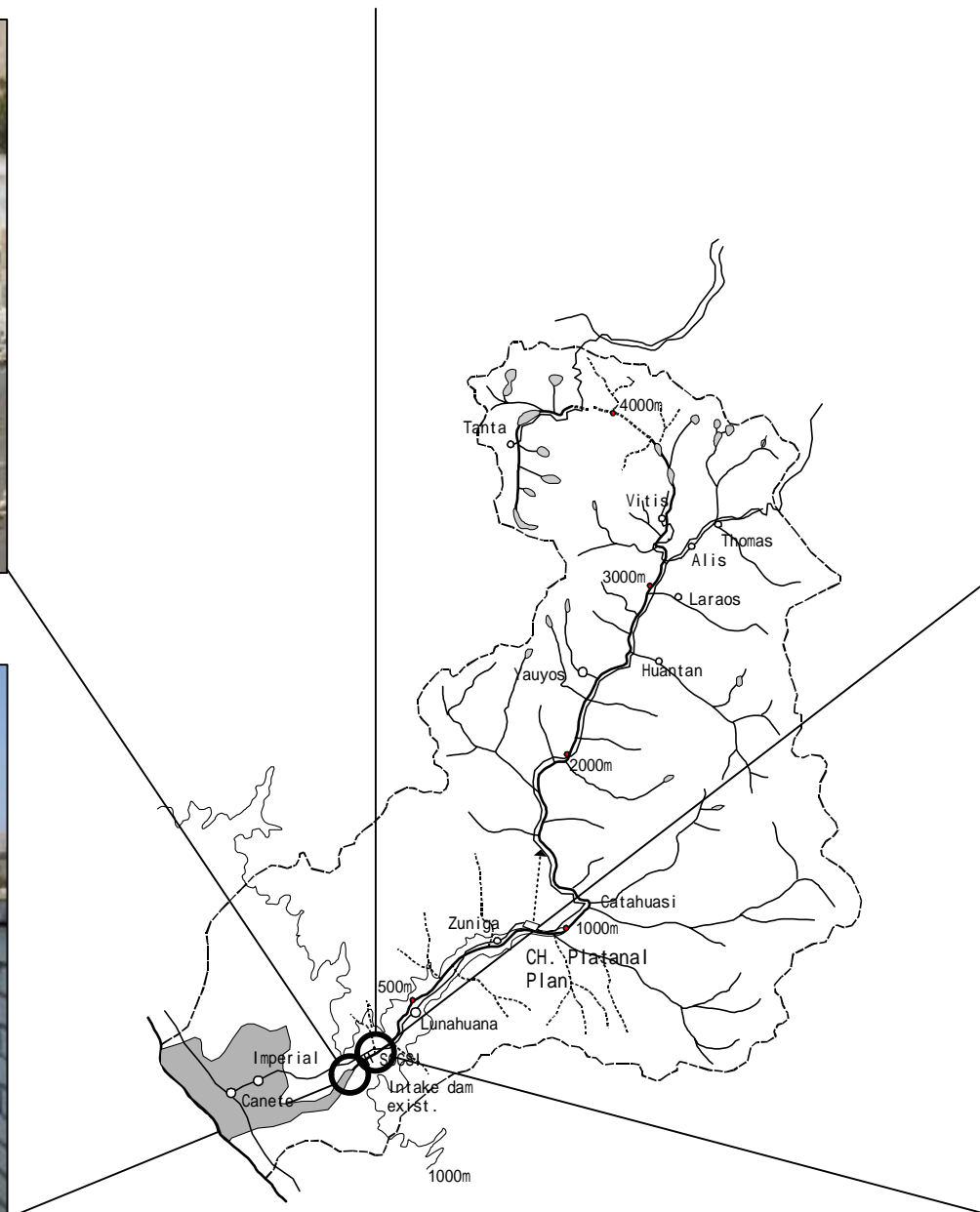
Sosci Gauging Station



Irrigation Sluice Gate at New Imperial



Upstream View from Sosci Gauging Station



Irrigation Waterway at New Imperial



**Zuniga-2 Lower Site-1:
Proposed intake dam for D/I water supply**



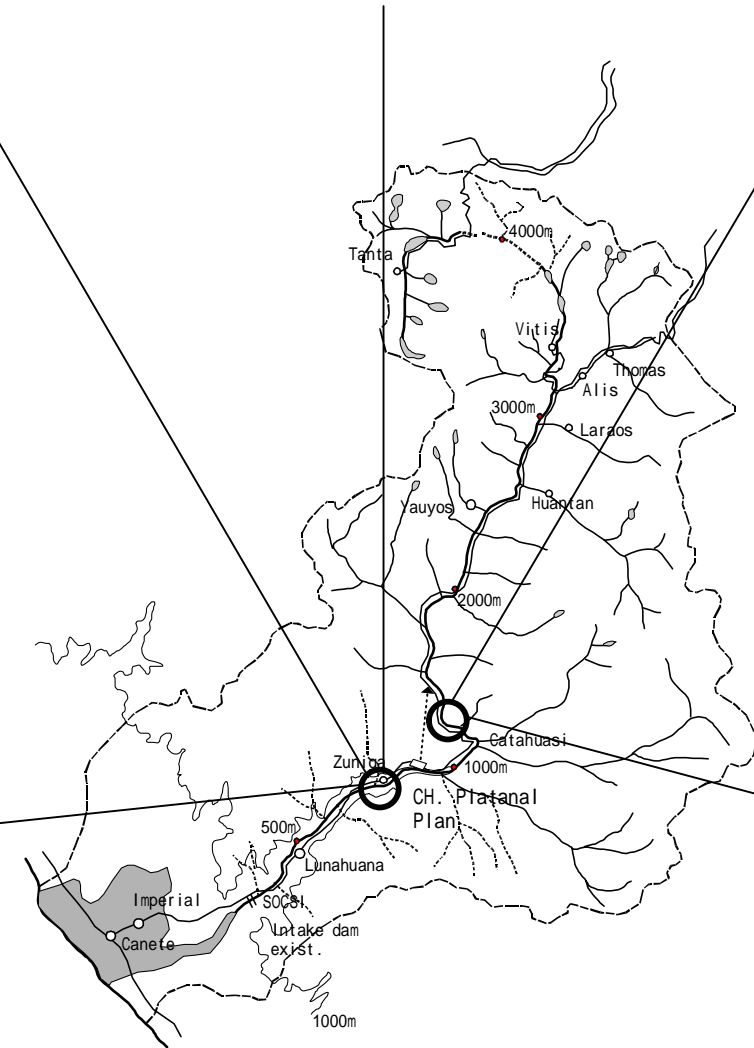
**Zuniga-1 Upper Site:
Proposed intake dam for D/I water supply**



Downstream View from Chavin Gauging Station



**Zuniga-3 Lower Site-2:
Proposed intake dam for D/I water supply**



Chavin Gauging Station



Yauyos

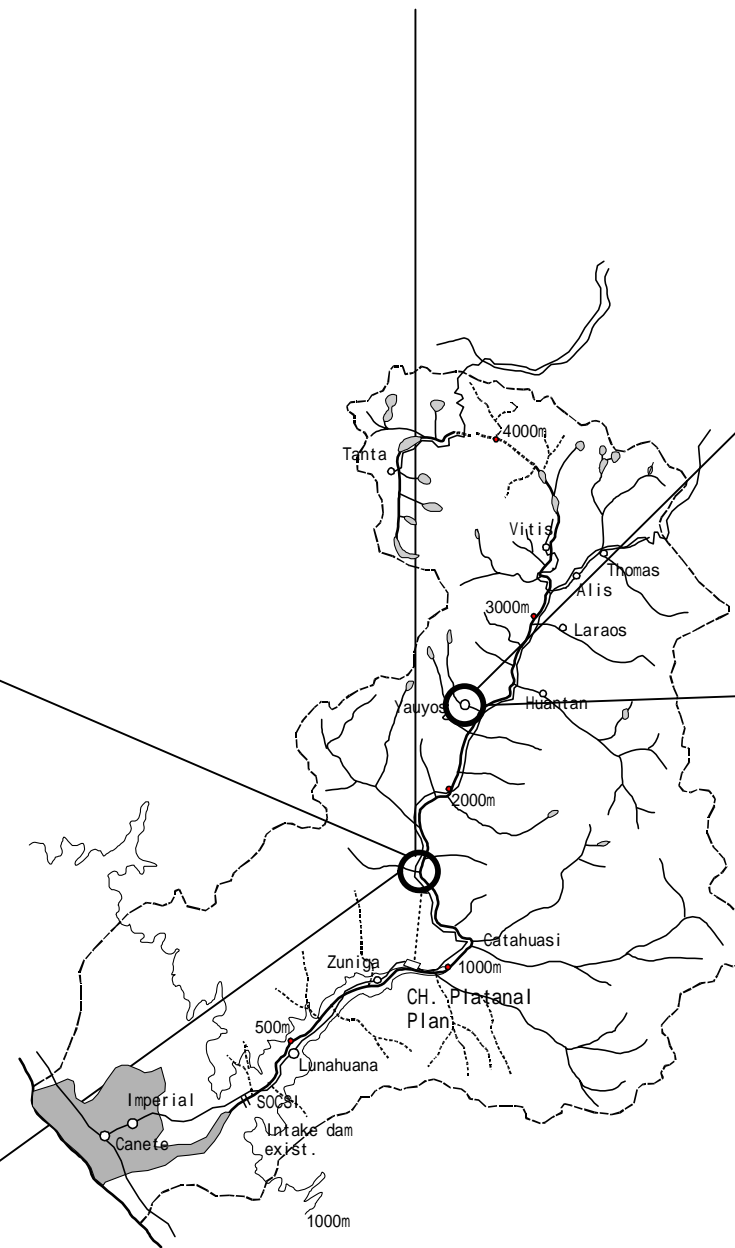
El Platanal Power Station Tunnel Route



El Platanal PS_Intake Site



Downstream of El Platanal PS Route



Overview of Yauyos



**Morro de Arica Dam Site-1:
Integrated Project**



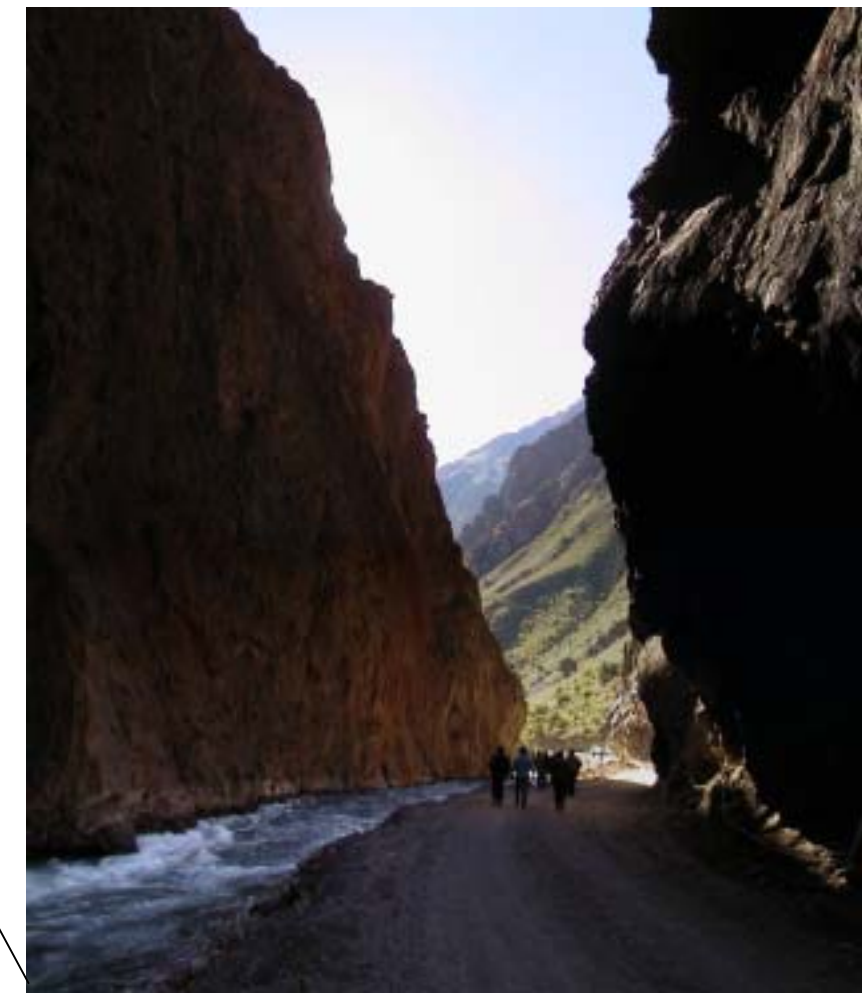
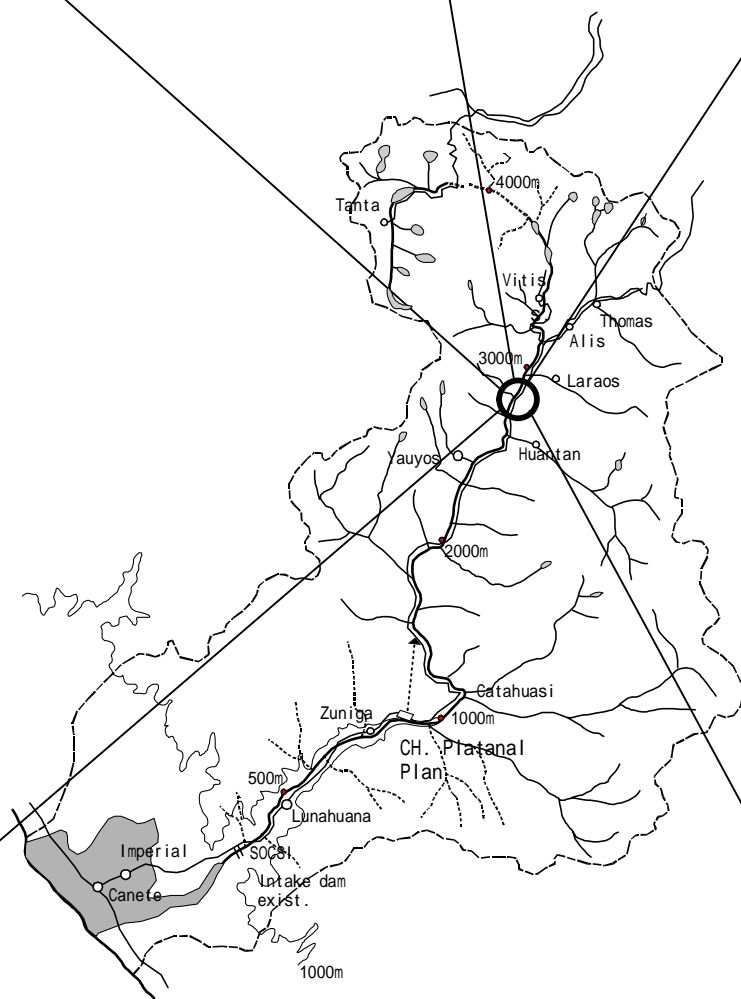
Morro de Arica Dam Site-2: Test adit



Morro de Arica Dam Site-3: Boring core



**Morro de Arica Dam Site-4:
View from upstream**



**Morro de Arica Dam Site-5:
View from downstream**



Tinco de Alis Gauging Station



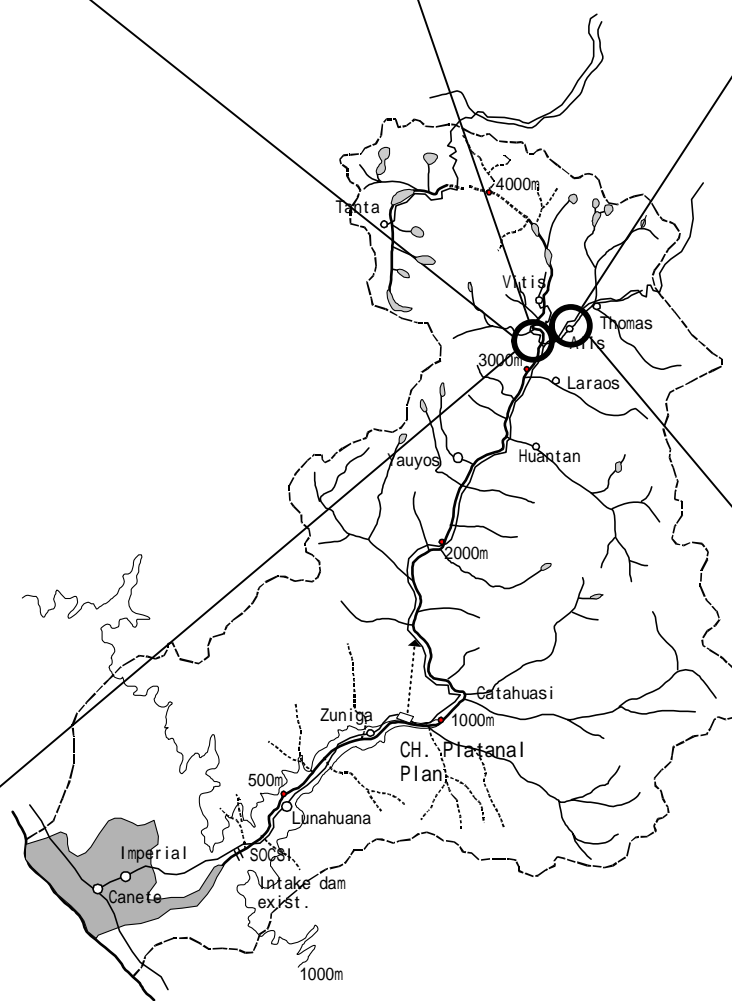
Alis River:
Junction of Canete river and Alis river



Alis



Tinco de Alis Gauging Station



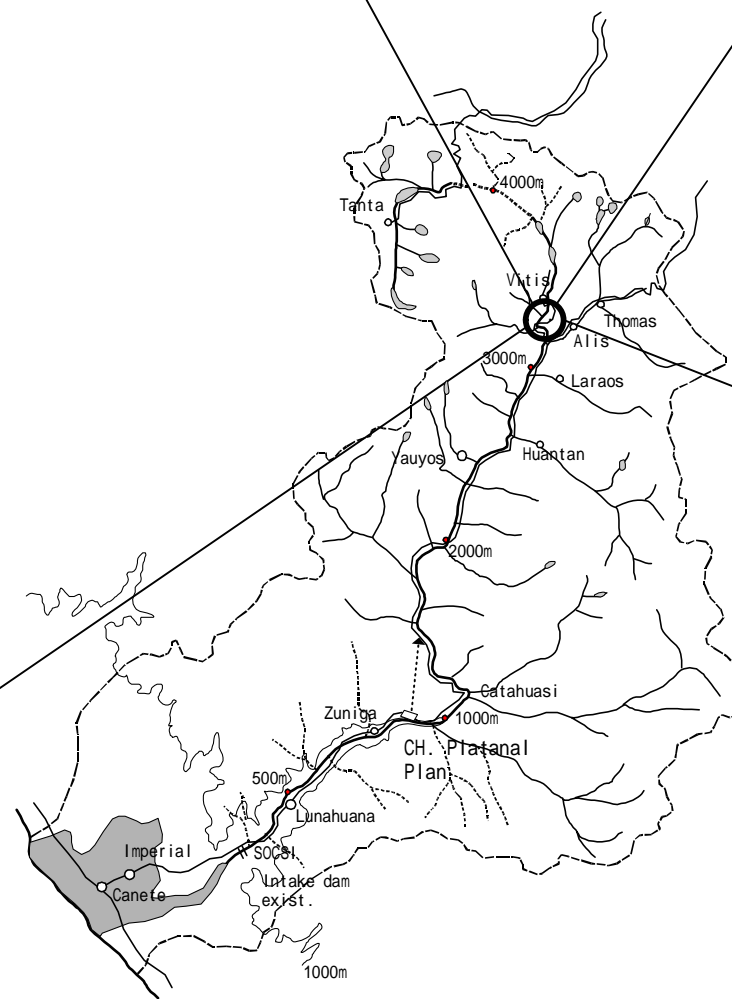
Hotel in Alis



Piquicocha Lake



Piquicocha Lake



Outflow from Piquicocha Lake



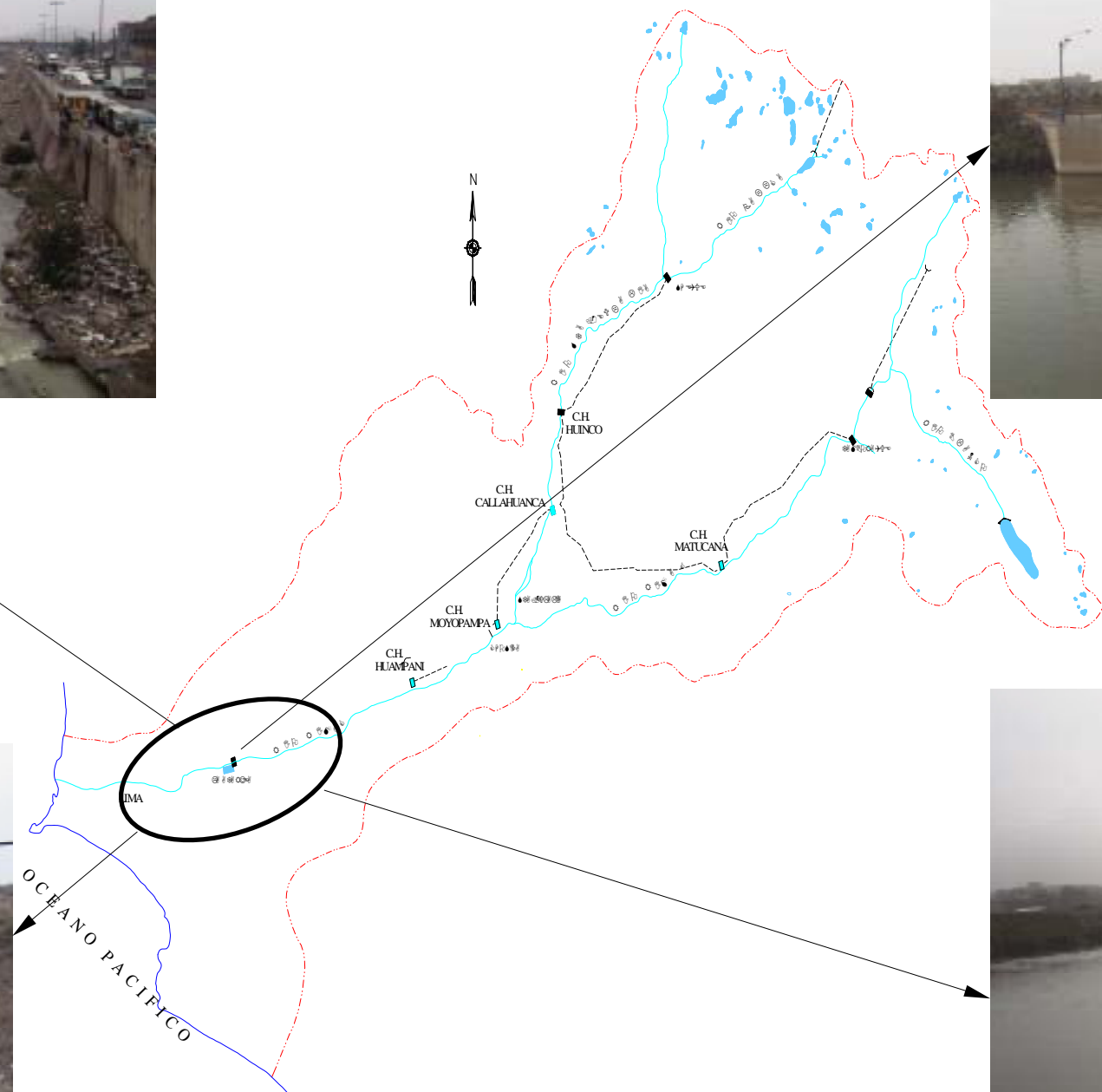
Outflow from Piquicocha Lake



Old Lima City and the Rimac River



SEDAPAL La Atarjea Intake in the Rimac river



The Rimac River downstream Lima City



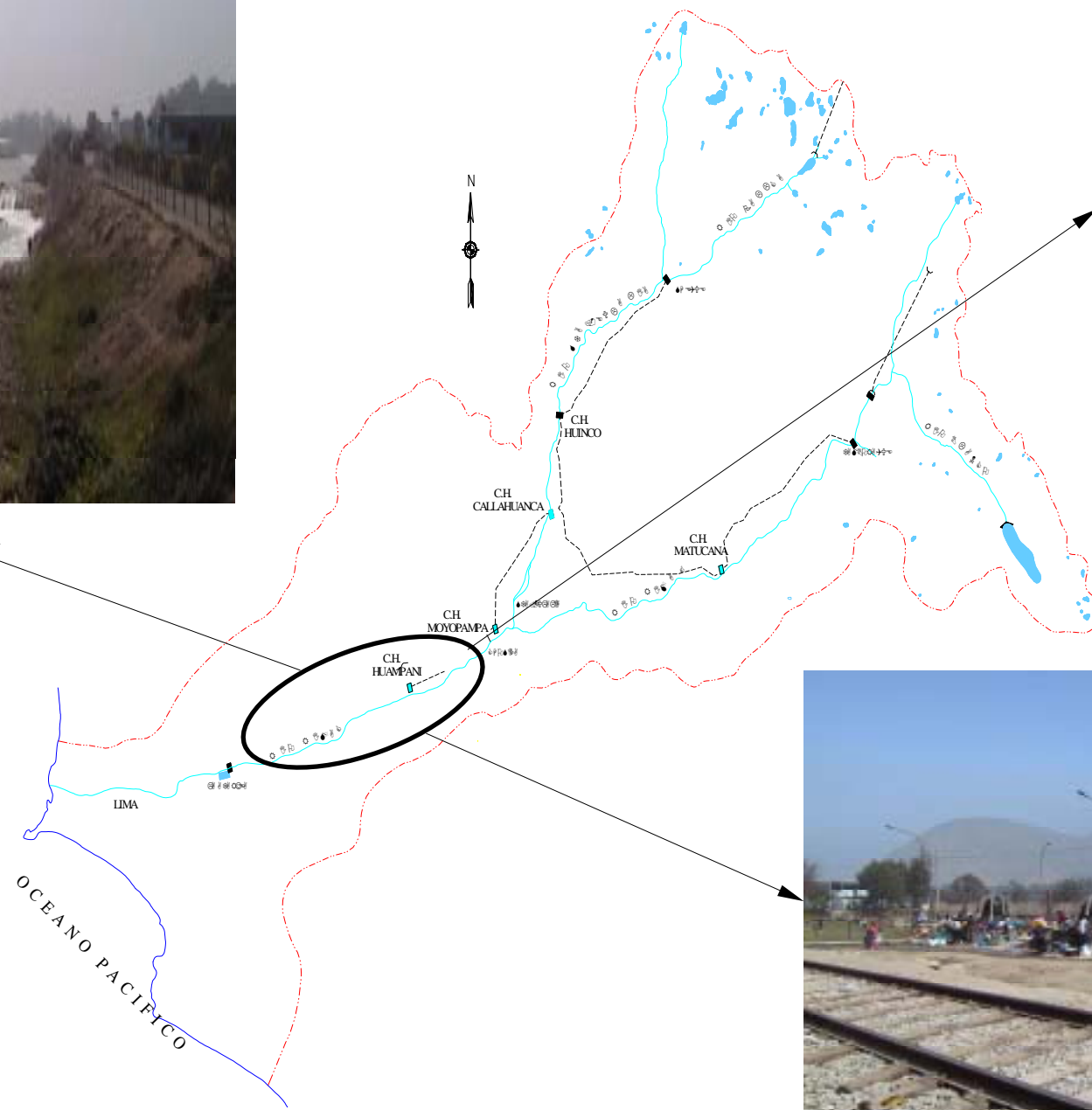
Upstream View of La Atarjea



Huachipa Intake: 5 km upstream of La Atarjea



The Rimac River upstream of La Atarjea: channel widening works with concrete wall for groundwater recharge.



Public Washing Site for Poor People in Chaclacayo



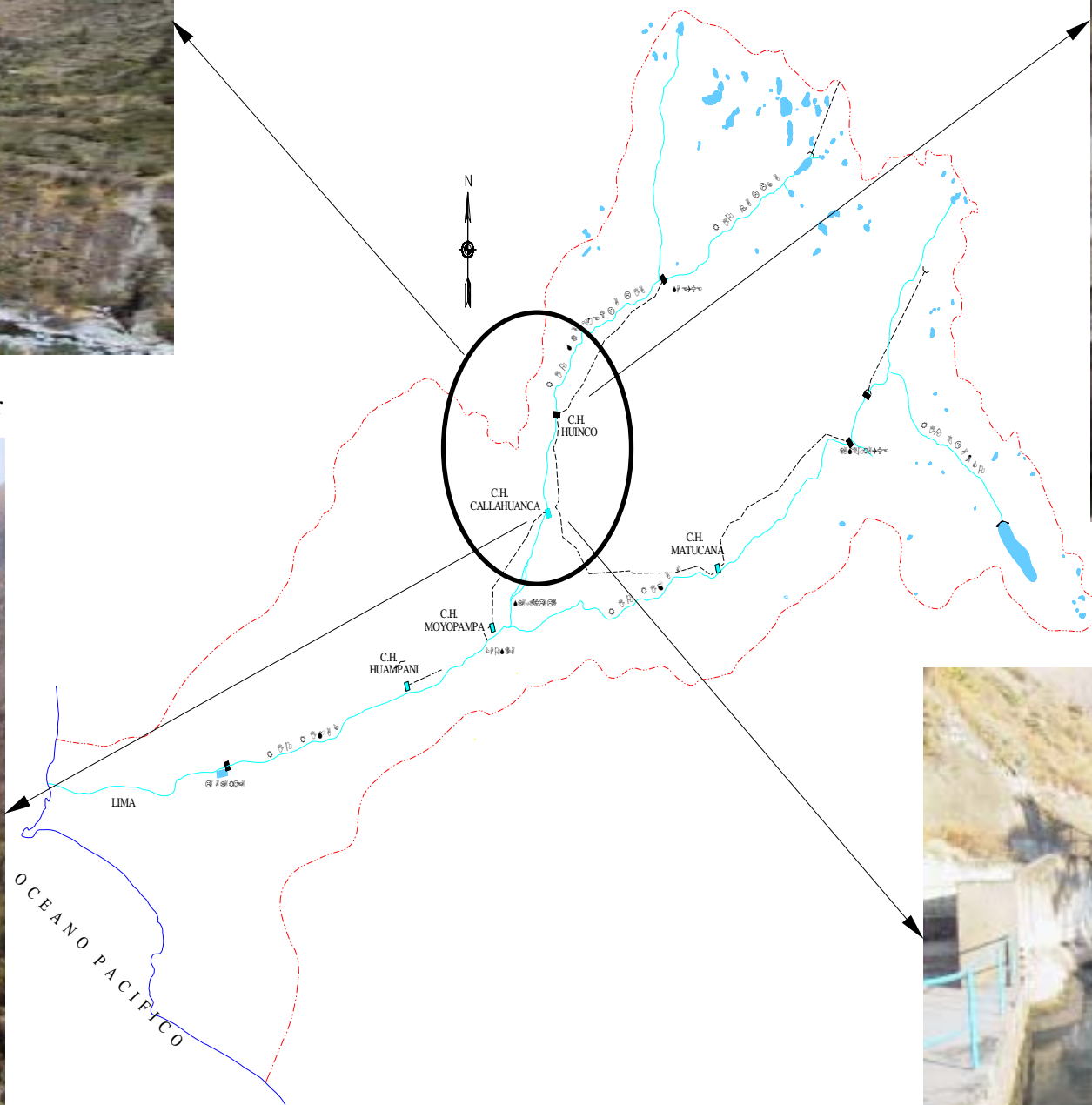
The Middle Reach of the Santa Eulalia River



Overview of the Outlet Facilities of Regulation Pond of Huinco Hydroelectric Power Station



Callahuanca Hydro-electric Power Station:
Excess water is discharged into the Santa Eulalia River



Tunnel Outlet from Matucana Hydroelectric Power Station at the
Connection Pond for Callahuanca Power Station

**STUDY
ON
INTEGRATED WATER RESOURCES DEVELOPMENT
IN THE CAÑETE RIVER BASIN
IN
THE REPUBLIC OF PERU**

**FINAL REPORT
VOLUME I
EXECUTIVE SUMMARY**

Contents

SUMMARY AND CONCLUSION.....	Si
The Study Area	
Cañete River-Photo 01 to 06	
Rimac River-Photo 01 to 03	
	<u>Page</u>
Preface.....	S-1
Socioeconomy in Peru and Study area.....	S-2
Water resources potential analysis	S-3
Water demand and supply balance analysis	S-4
Screening criteria and development plan analysis.....	S-6
Assessment of water resources management	S-9
Supplemental investigation on Rimac river	S-11
Integrated Master Plan and Conclusions.....	S-12

Contents of Tables

Table 1	Water Resources Development Scenarios and Alternative Cases	S-15
Table 2	Overall Evaluation for Screening and Scoping	S-16
Table 3	Summary of Tasks of Organizations related to Water Resources Development and Management	S-17
Table 4	Flow Balance in Rimac River Basin	S-18
Table 5	Water Quality at La Atarjea SEDAPAL Intake	S-19

Contents of Figures

Figure 1	Location of Meteorological and Hydrological Station	S-20
Figure 2	Flow Duration Curve at the Gauging Stations in the Cañete River Basin	S-21
Figure 3	Water Supply Service Area (1/2) & (2/2)	S-22
Figure 4	Proposed Water Supply System	S-24
Figure 5	Demand - Supply Balance and Proposed Expansion System for Metropolitan Lima Water Supply System	S-25
Figure 6	Existing Cropping Pattern in the Valle de Cañete (24,052 ha)	S-26
Figure 7	Map on Irrigation Areas	S-27
Figure 8	National Interconnected System in Peru – 1999	S-28
Figure 9	Projection of the Maximum Power Demand 2000-2030	S-29
Figure 10	Proposed Dam & Diversion Dam Sites and Water Transmission Alternatives	S-30
Figure 11	Paucarcocha Dam (Earthfill Dam)	S-31
Figure 12	Morro de Arica Dam (RCC Dam)	S-32
Figure 13	Project System Diagram for Scenario – 2	S-33
Figure 14	Location of CAÑETE Scheme and MANTARO-CARISPACCHA Scheme	S-34
Figure 15	Implementation Schedule of Water Resources Development	S-35
Figure 16	Organization Chart of SEDAPAL	S-36
Figure 17	Present and Proposed Water Use Management	S-37

List of Acronyms

AACH	:	<i>Autoridad Autónoma de la Cuenca Hidrográfica</i> (Autonomous Hydrographic Basin Authority)
ATR	:	<i>Administración Técnica de Distrito de Riego</i> (Technical Administration for Irrigation District)
COES	:	<i>Comité de Ocupación Económica del Sistema Interconectado Nacional</i> (Committee for Economic Operation of the National Interconnected System)
CONAM	:	<i>Consejo Nacional del Ambiente</i> (National Environment Council)
DGAA	:	<i>Dirección General Asuntos Ambientales</i> (Directorate General for Environmental Affairs)
DGAS	:	<i>Dirección General de Aguas y Suelos</i> (General Board of Water and Soil)
DGE	:	<i>Dirección General de Electricidad</i> (Directorate General for Electricity)
DGM	:	<i>Dirección General de Minas</i> (Directorate General for Mining)
DIGESA	:	<i>Dirección General de Salud Ambiental</i> (Directorate General for Environmental Health)
EDEGEL	:	<i>Empresa de Generación Eléctrica de Lima S.A.</i> (Electric Generation Company of Lima)
ELECTROPERU	:	<i>Empresa de Electricidad del Perú</i> (Peru Electricity Enterprise)
FONCODES	:	<i>Fondo Nacional de Compensación y Desarrollo</i> (National Fund for Compensation and Social Development)
IDB	:	Inter-American Development Bank
INADE	:	<i>Instituto Nacional de Desarrollo</i> (National Institute of Development)
INDECI	:	<i>Instituto Nacional de Defensa Civil</i> (National Institute of Civil Defense)
INRENA	:	<i>Instituto Nacional de Recursos Naturales</i> (National Institute of Natural Resources)
JBIC	:	Japan Bank for International Cooperation
JICA	:	Japan International Cooperation Agency
MAG	:	<i>Ministerio de Agricultura</i> (Ministry of Agriculture)
MD	:	<i>Ministerio de Defensa</i> (Ministry of Defense)
MEF	:	<i>Ministerio de Economía y Finanzas</i> (Ministry of Economy and Finance)
MEM	:	<i>Ministerio de Energía y Minas</i> (Ministry of Energy and Mining)

MIPRE	:	<i>Ministerio de la Presidencia</i> (Ministry of Presidency)
MITINCI	:	<i>Ministerio de Industria, Turismo, Integración y Negociaciones Comerciales Internacionales</i> (Ministry of Industry, Tourism, Integration and International Trade)
MS	:	<i>Ministerio de Salud</i> (Ministry of Health)
OECD	:	The Overseas Economic Cooperation Fund, Japan
OUA	:	<i>Organizaciones de Usuarios de Aguas</i> (Water Users' Association)
PRONAMACHS	:	<i>Proyecto Nacional de Manejo de Cuencas Hidrográficas y Conservación de Suelos</i> (National Program for River Basin Management and Soil Conservation)
SEDAPAL	:	<i>Servicio de Agua Potable y Alcantarillado de Lima</i> (Potable Water and Sewage Service of Lima)
SENAMHI	:	<i>Servicio Nacional de Meteorología e Hidrología</i> (National Service for Meteorology and Hydrology)
SUNASS	:	<i>Superintendencia Nacional de Servicios de Saneamiento</i> (National Superintendence of Sanitary Service)