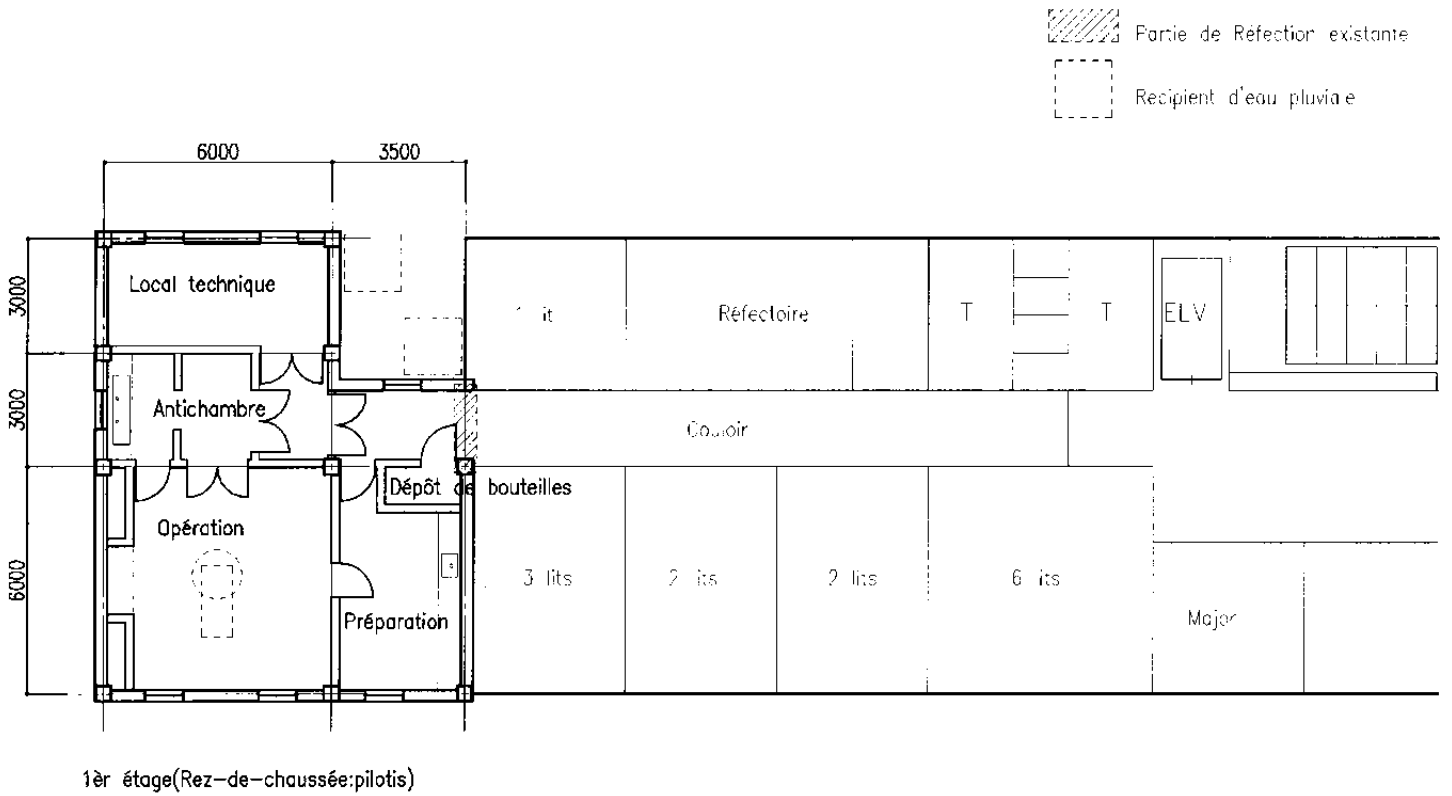
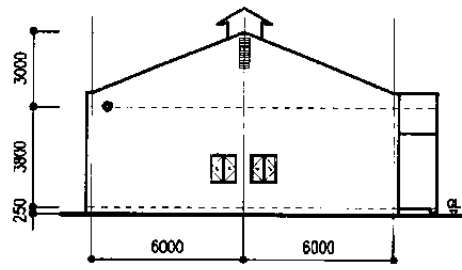
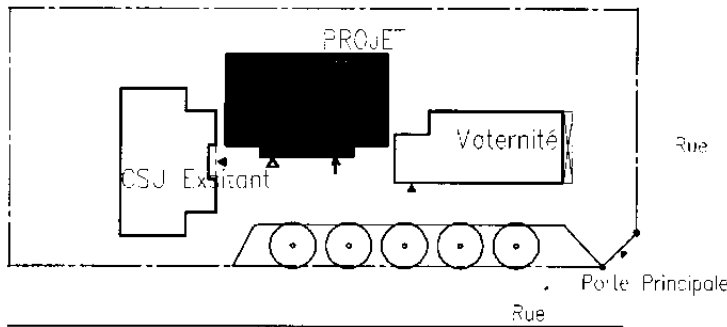


FACADE 1/300

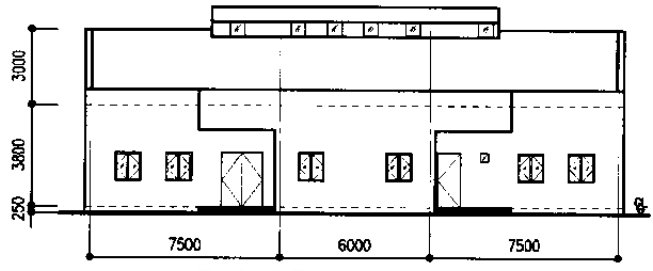


PLAN D'ETAGE 1/200
No.1 Mohamed V

ROYAUME DU MAROC, L'ETUDE DU CONCEPT DE BASE POUR
LE PROJET D'AMELIORATION DES SOINS DE SANTE MATERNELE EN MILIEU RURAL

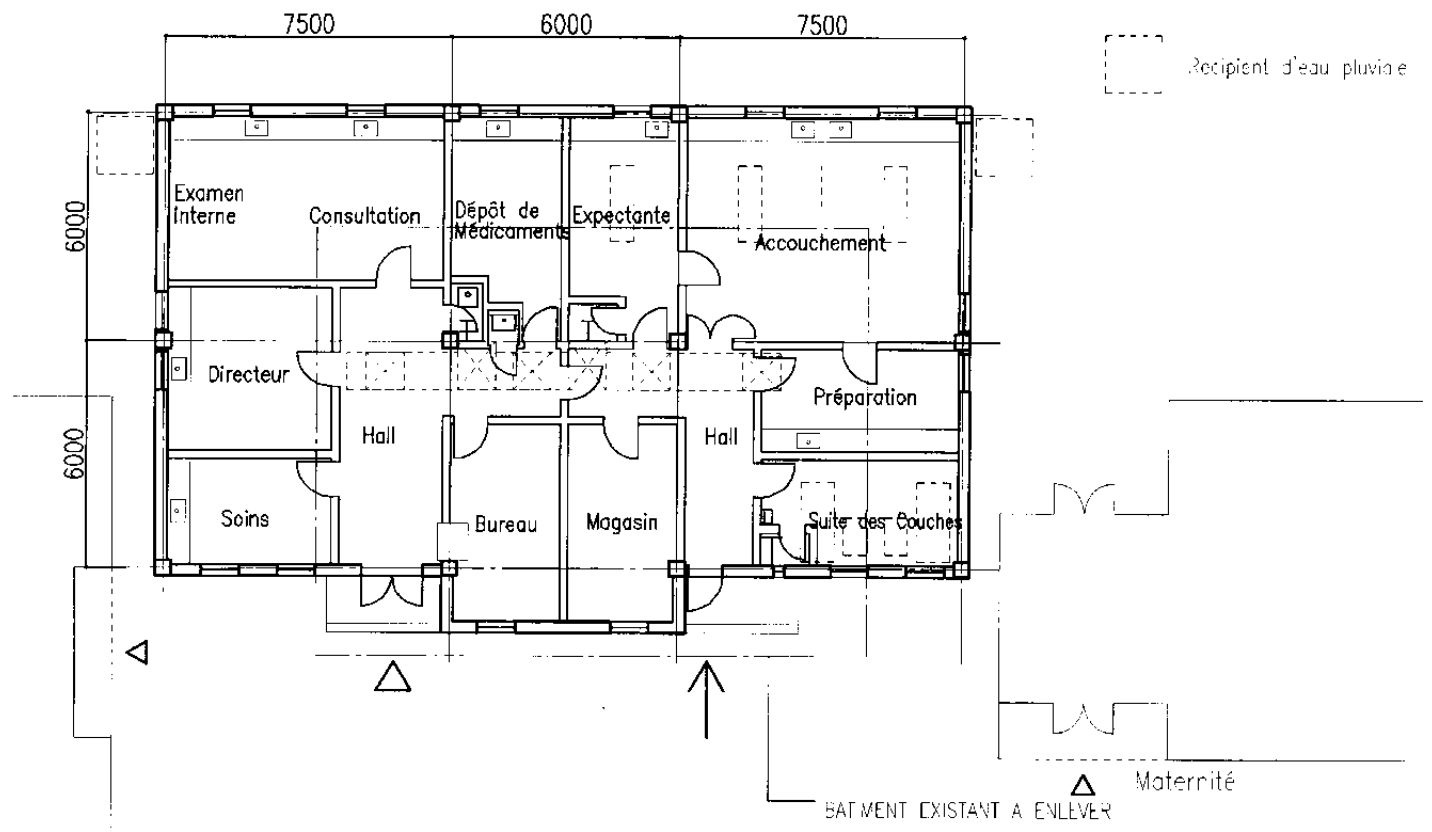


FACADE OUEST



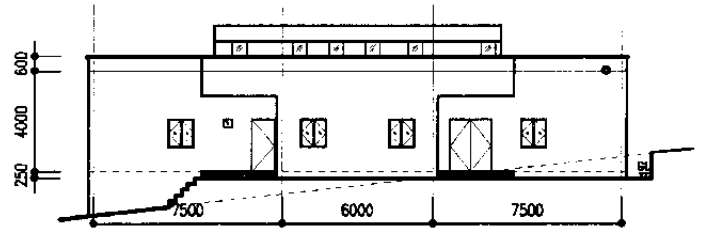
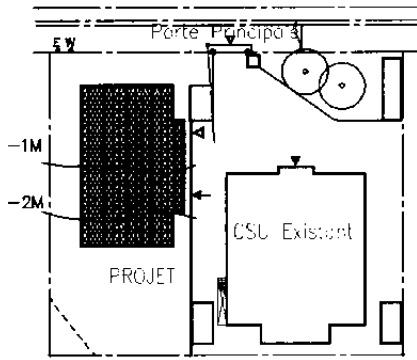
FACADE SUD

PLAN DE MASSE 1/1000
FACADE 1/300

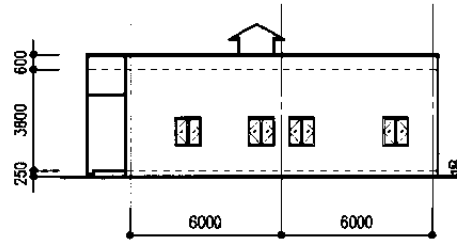


PLAN D'ETAGE 1/200
No.2 Immouzer

ROYAUME DU MAROC, L'ETUDE DU CONCEPT DE BASE POUR
LE PROJET D'AMELIORATION DES SOINS DE SANTE MATERNELE EN MILIEU RURAL



FACADE OUEST

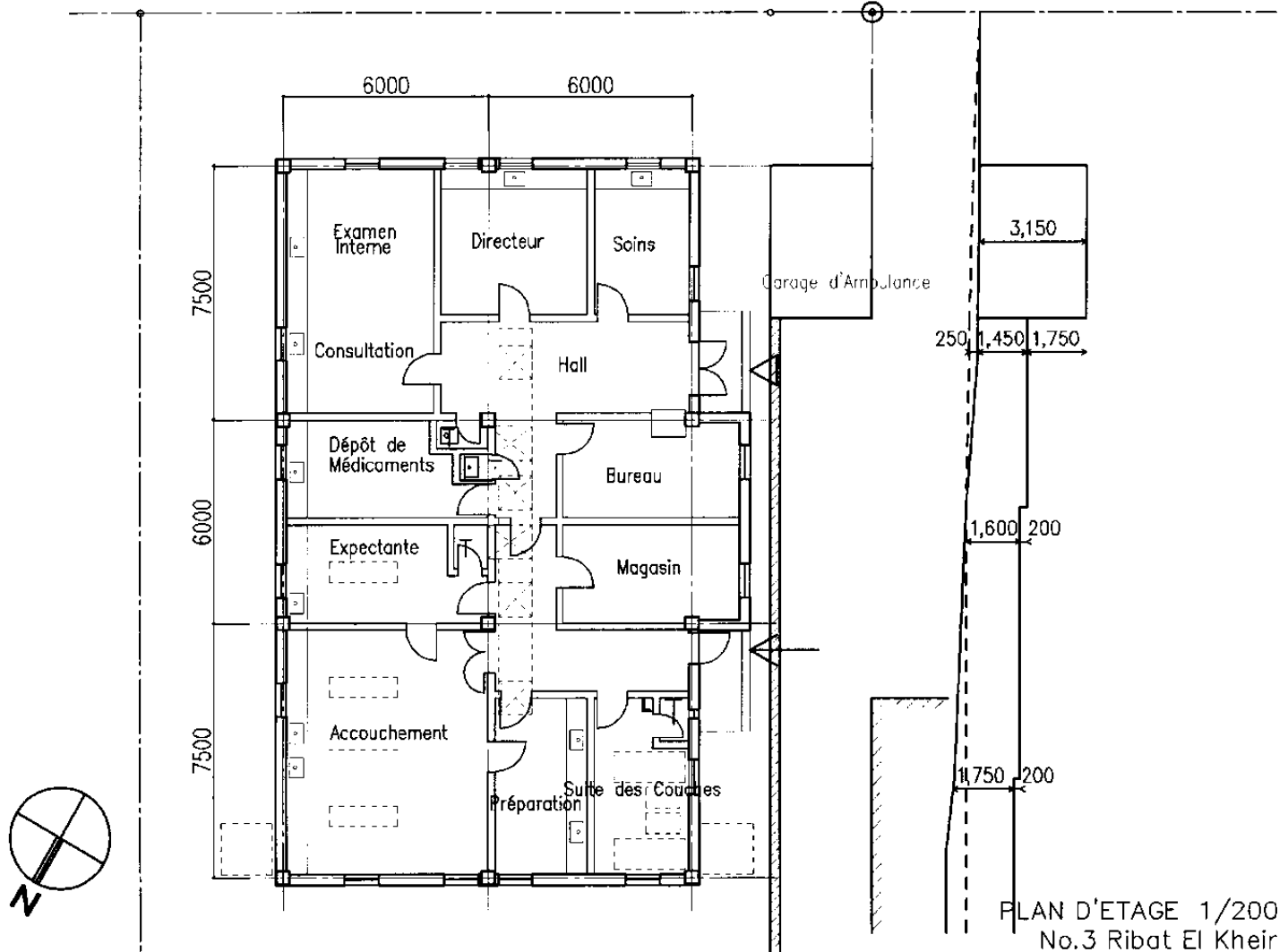


FACADE SUD



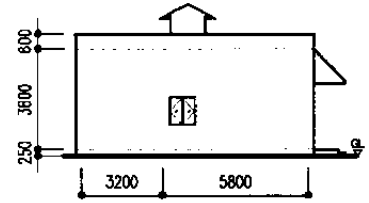
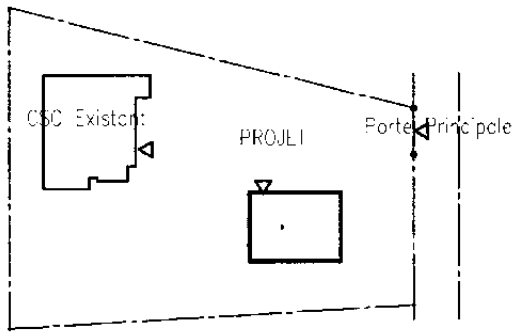
PLAN DE MASSE 1/1000
FACADE 1/300

Recipient d'eau pluviale

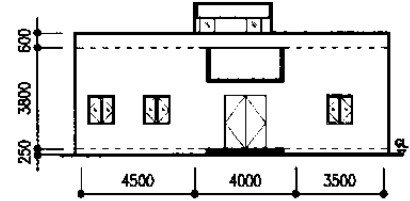


PLAN D'ETAGE 1/200
No.3 Ribat El Khair

ROYAUME DU MAROC, L'ETUDE DU CONCEPT DE BASE POUR
LE PROJET D'AMELIORATION DES SOINS DE SANTE MATERNELE EN MILIEU RURAL



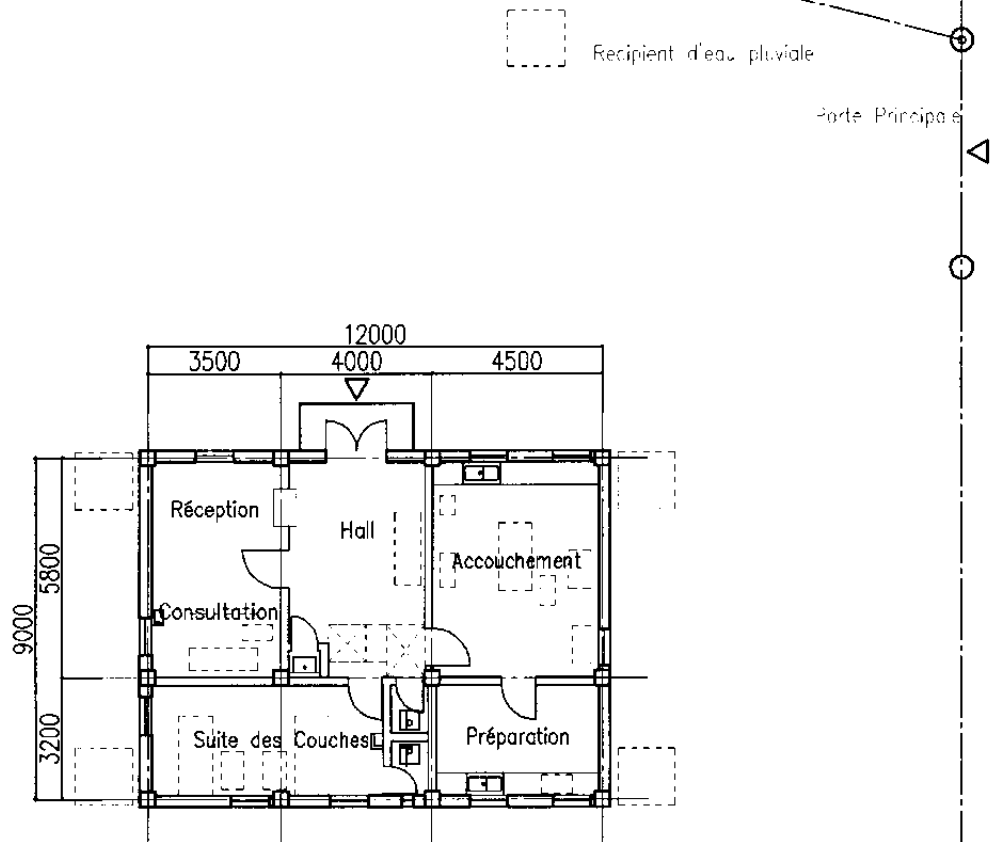
FACADE EST



FACADE NORD

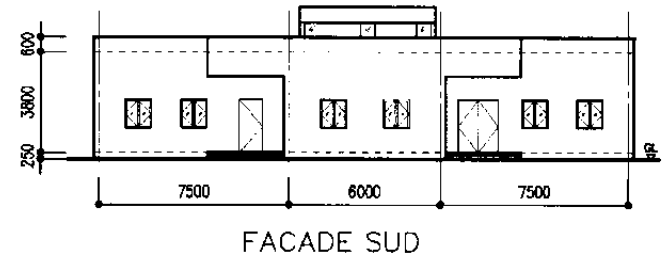
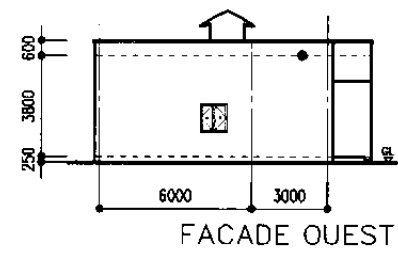
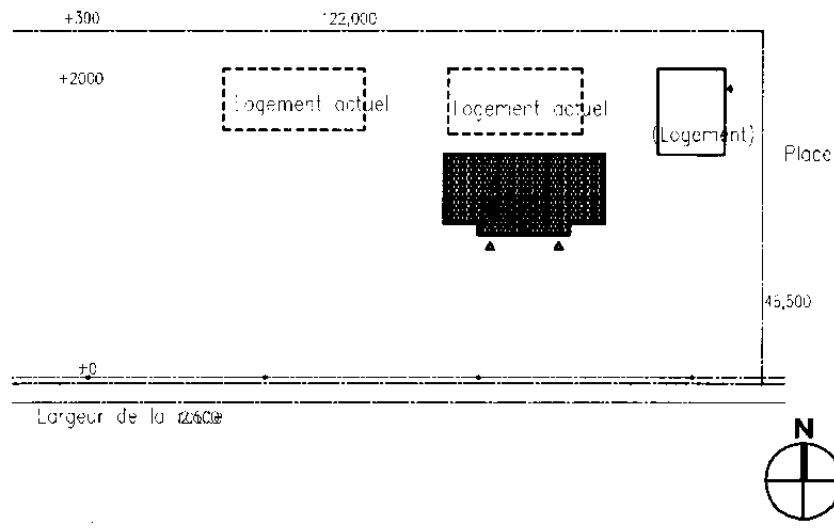


PLAN DE MASSE 1/1000
FACADE 1/300

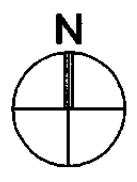


PLAN D'ETAGE 1/200
No.4 Adrej

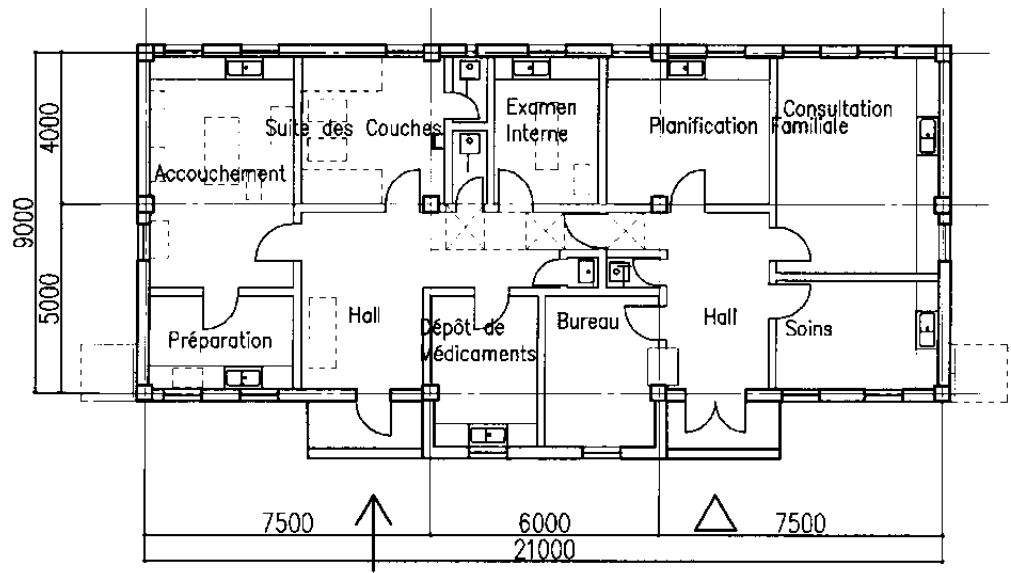
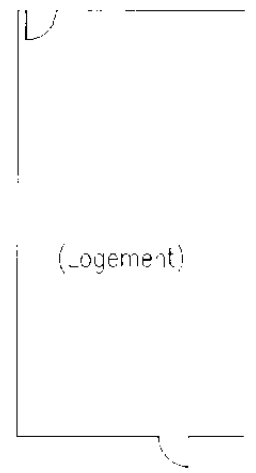
ROYAUME DU MAROC, L'ETUDE DU CONCEPT DE BASE POUR
LE PROJET D'AMELIORATION DES SOINS DE SANTE MATERNELE EN MILIEU RURAL



PLAN DE MASSE 1/1000
FACADE 1/300

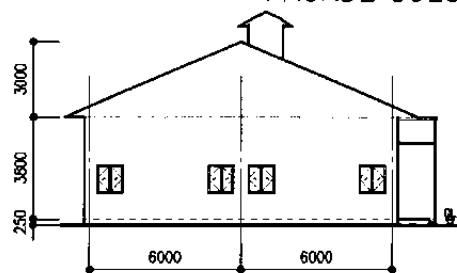
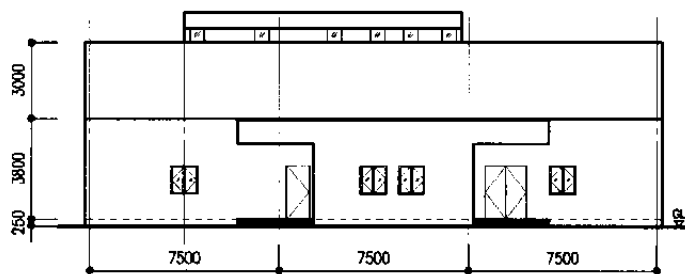
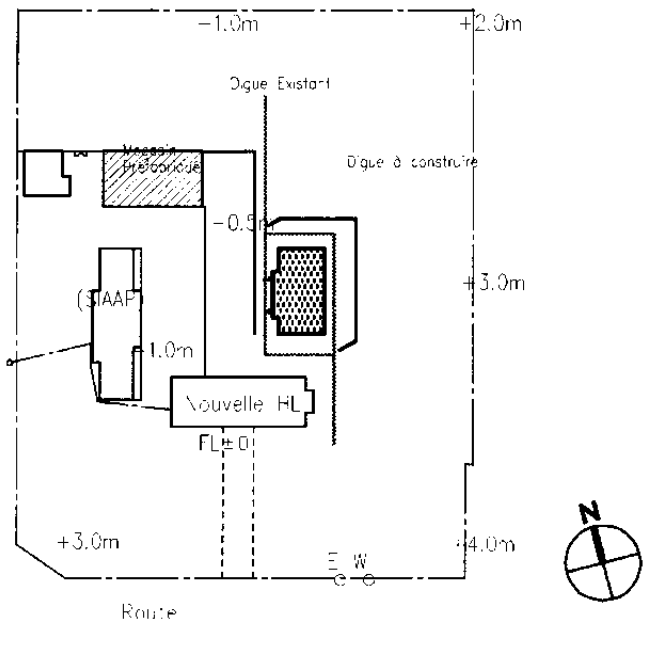


Recipient d'eau pluviale



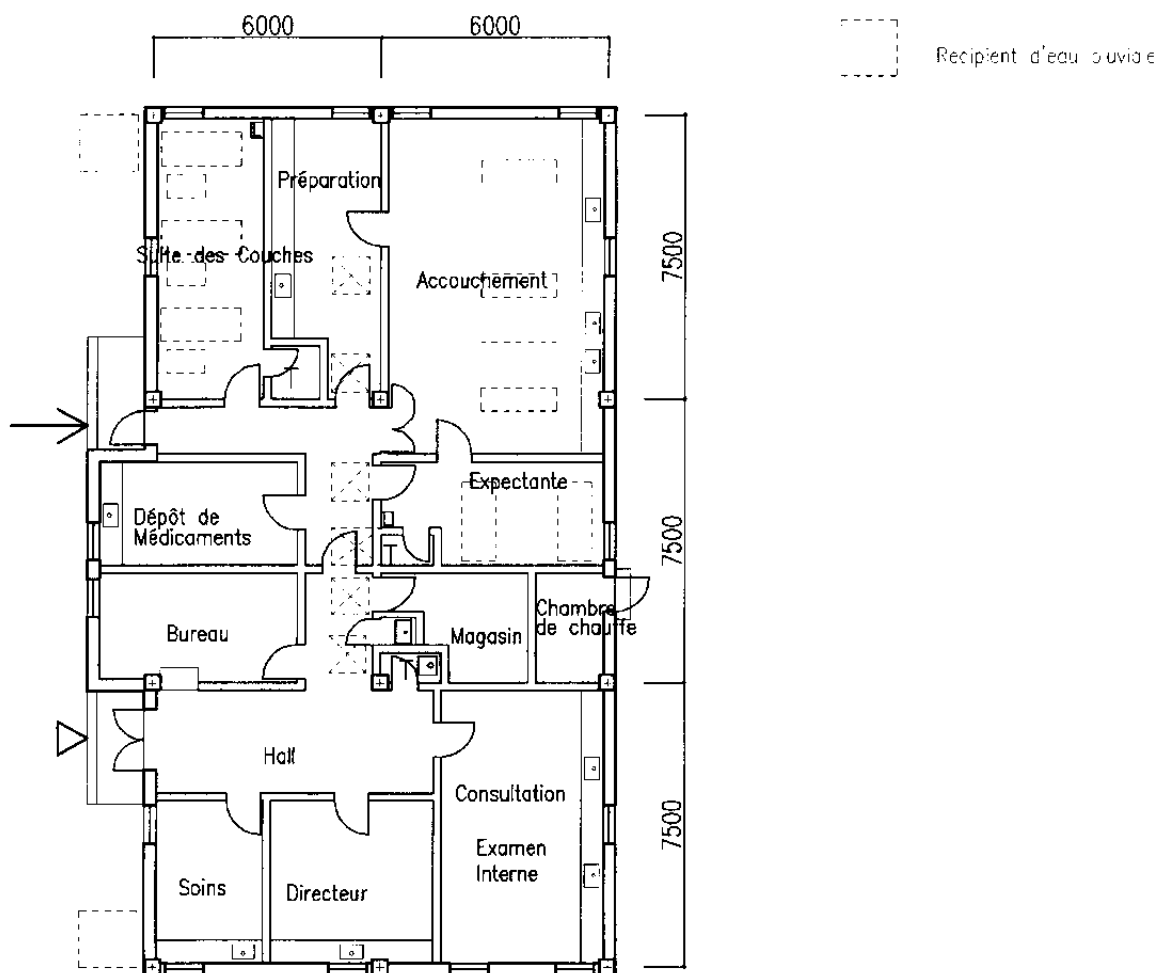
PLAN D'ETAGE 1/200
No.5 Ayoun Senan

ROYAUME DU MAROC, L'ETUDE DU CONCEPT DE BASE POUR
LE PROJET D'AMELIORATION DES SOINS DE SANTE MATERNELE EN MILIEU RURAL



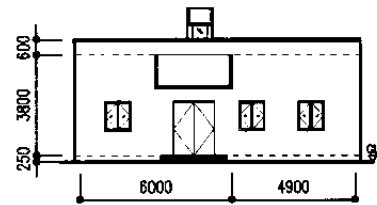
FACADE NORD

PLAN DE MASSE 1/2000
FACADE 1/300

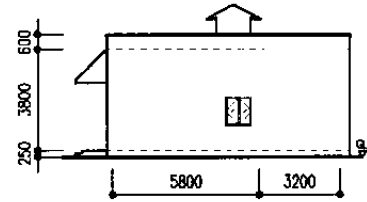


PLAN D'ETAGE 1/200
No.6 Boulemane

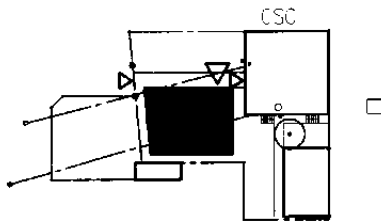
ROYAUME DU MAROC, L'ETUDE DU CONCEPT DE BASE POUR
LE PROJET D'AMELIORATION DES SOINS DE SANTE MATERNELE EN MILIEU RURAL



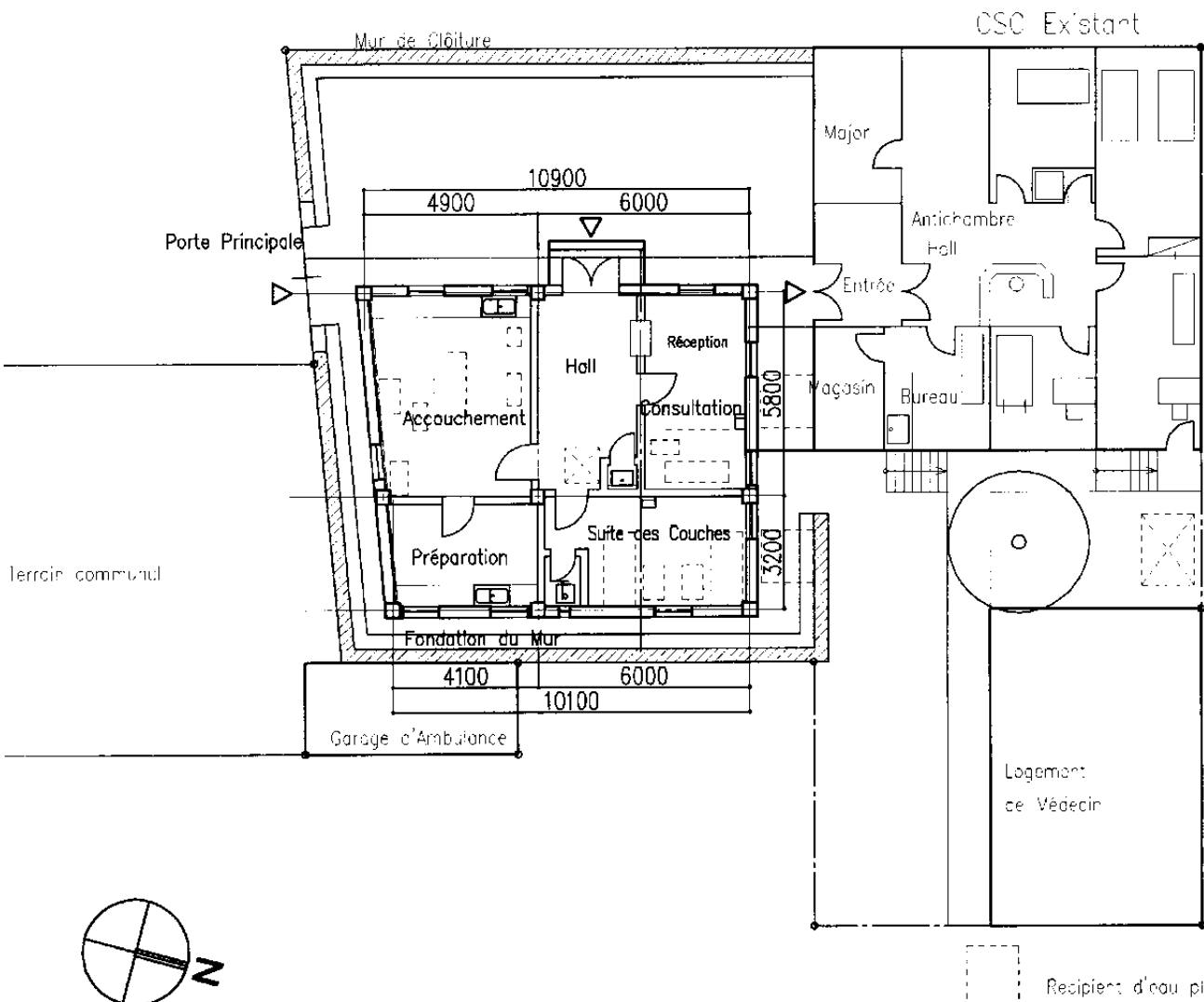
FACADE OUEST



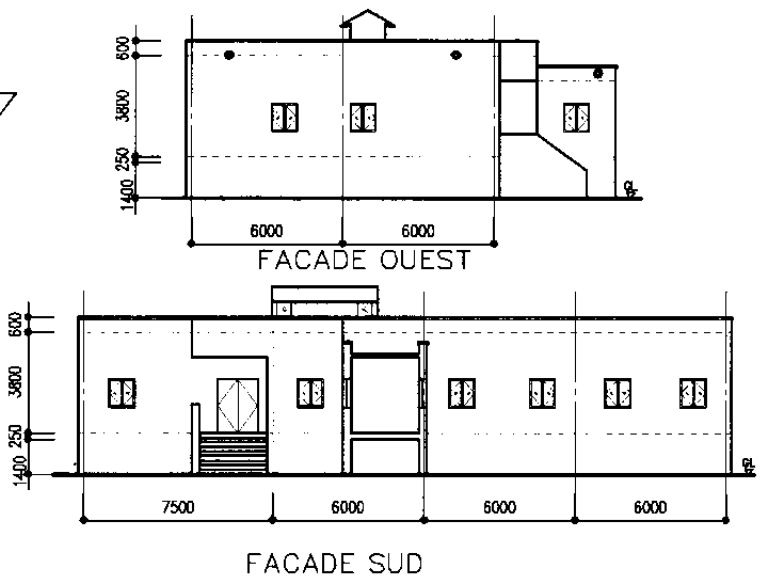
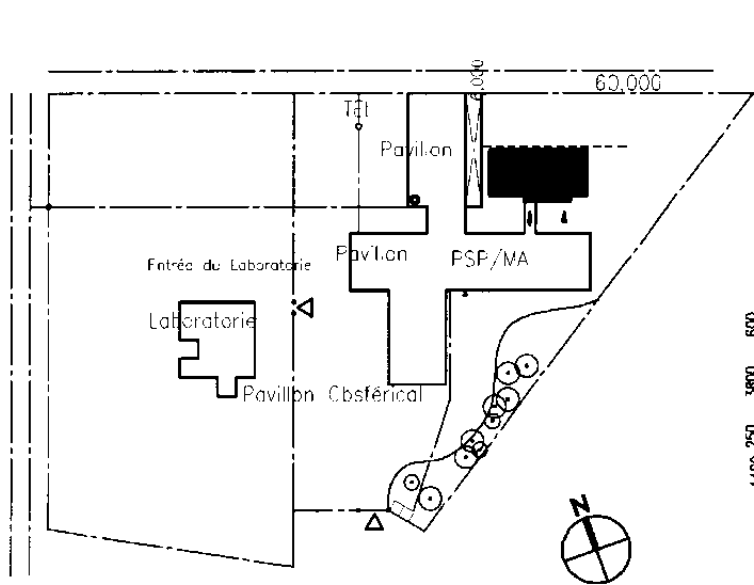
FACADE SUD



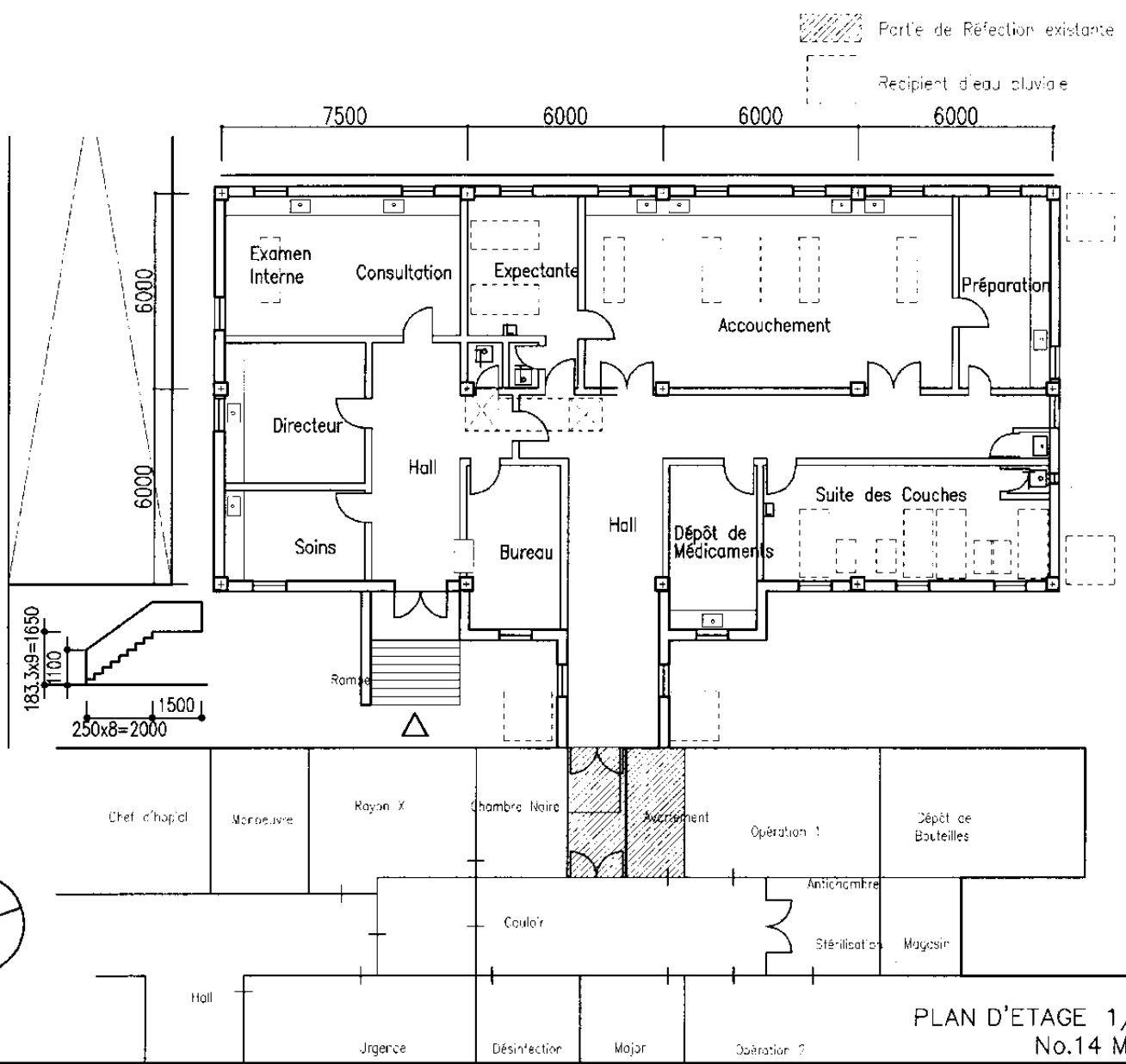
PLAN DE MASSE 1/1000
FACADE 1/300



PLAN D'ETAGE 1/200
No.7 Skoura

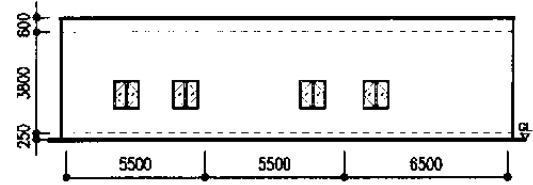
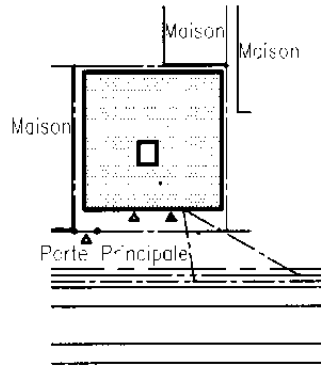


PLAN DE MASSE 1/1000
FACADE 1/300

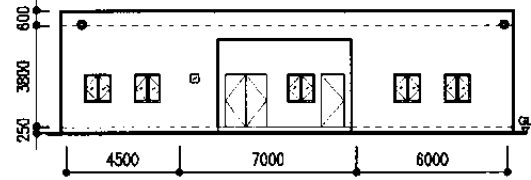


PLAN D'ETAGE 1/200
No.14 Midelt

ROYAUME DU MAROC, L'ETUDE DU CONCEPT DE BASE POUR
LE PROJET D'AMELIORATION DES SOINS DE SANTE MATERNELE EN MILIEU RURAL

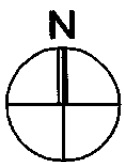
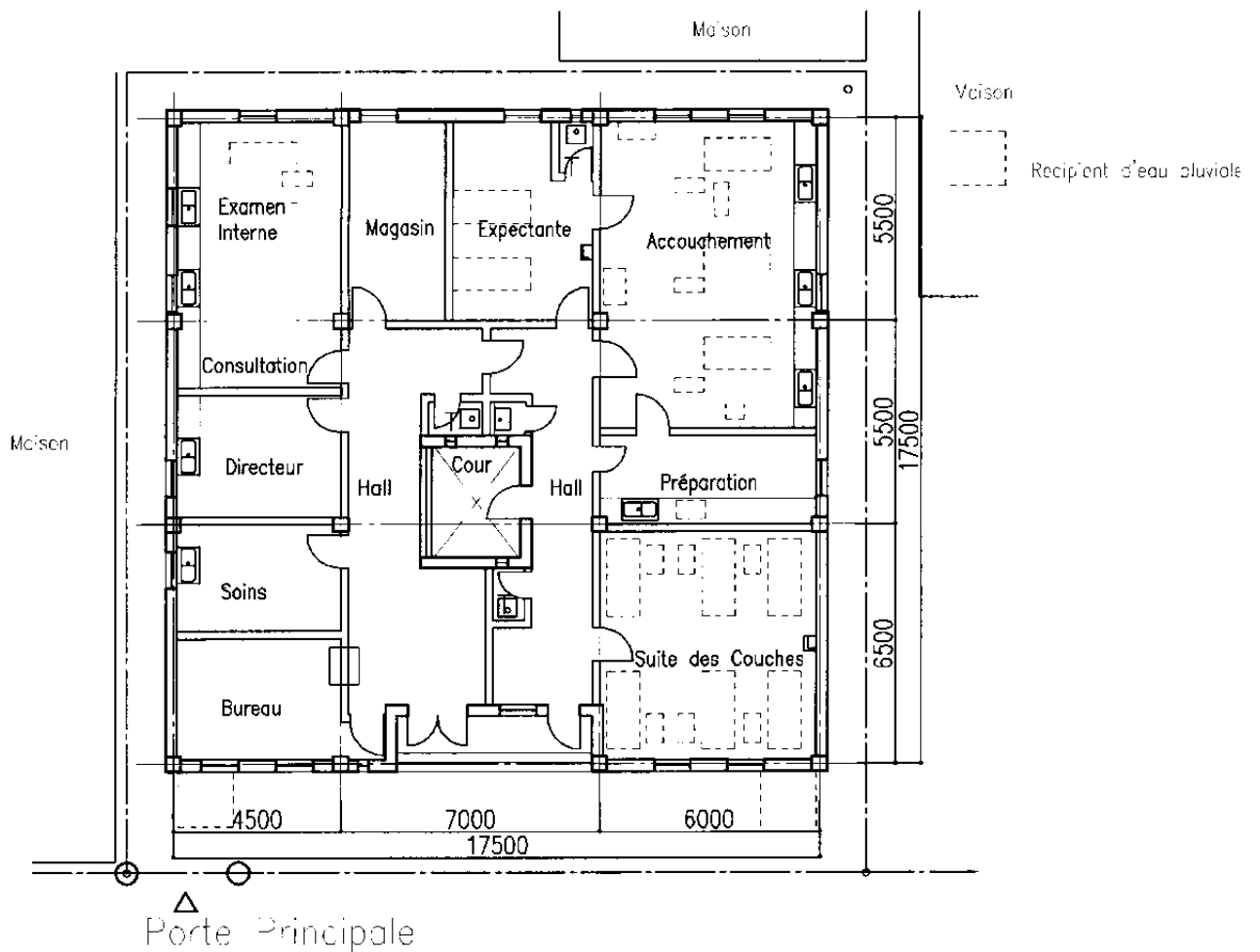


FACADE OUEST

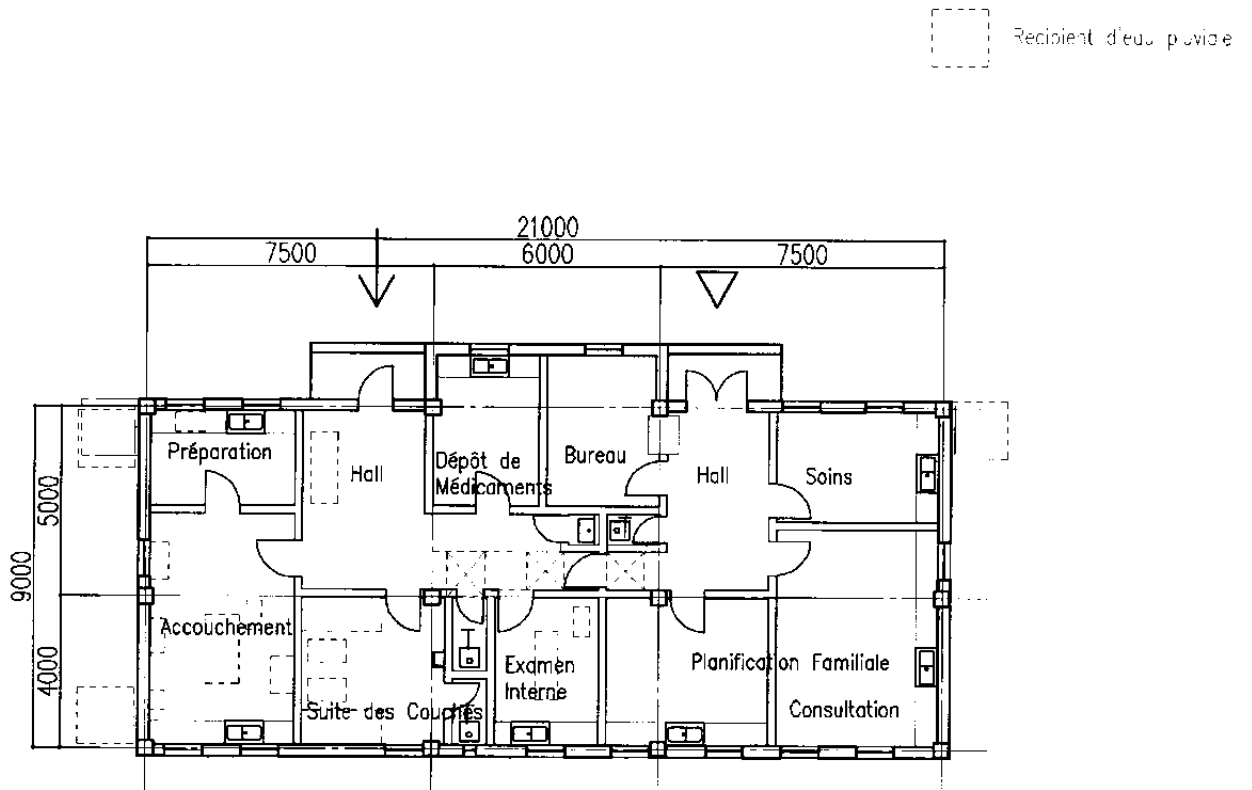
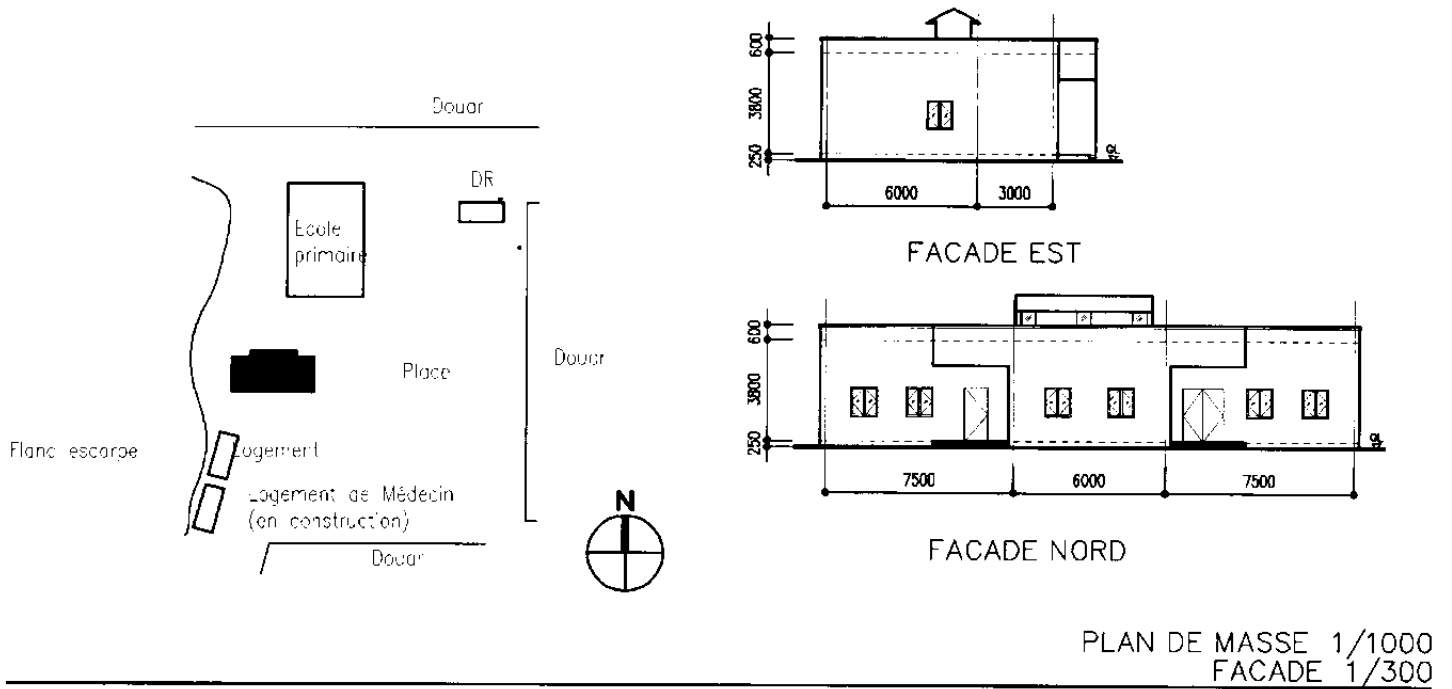


FACADE SUD

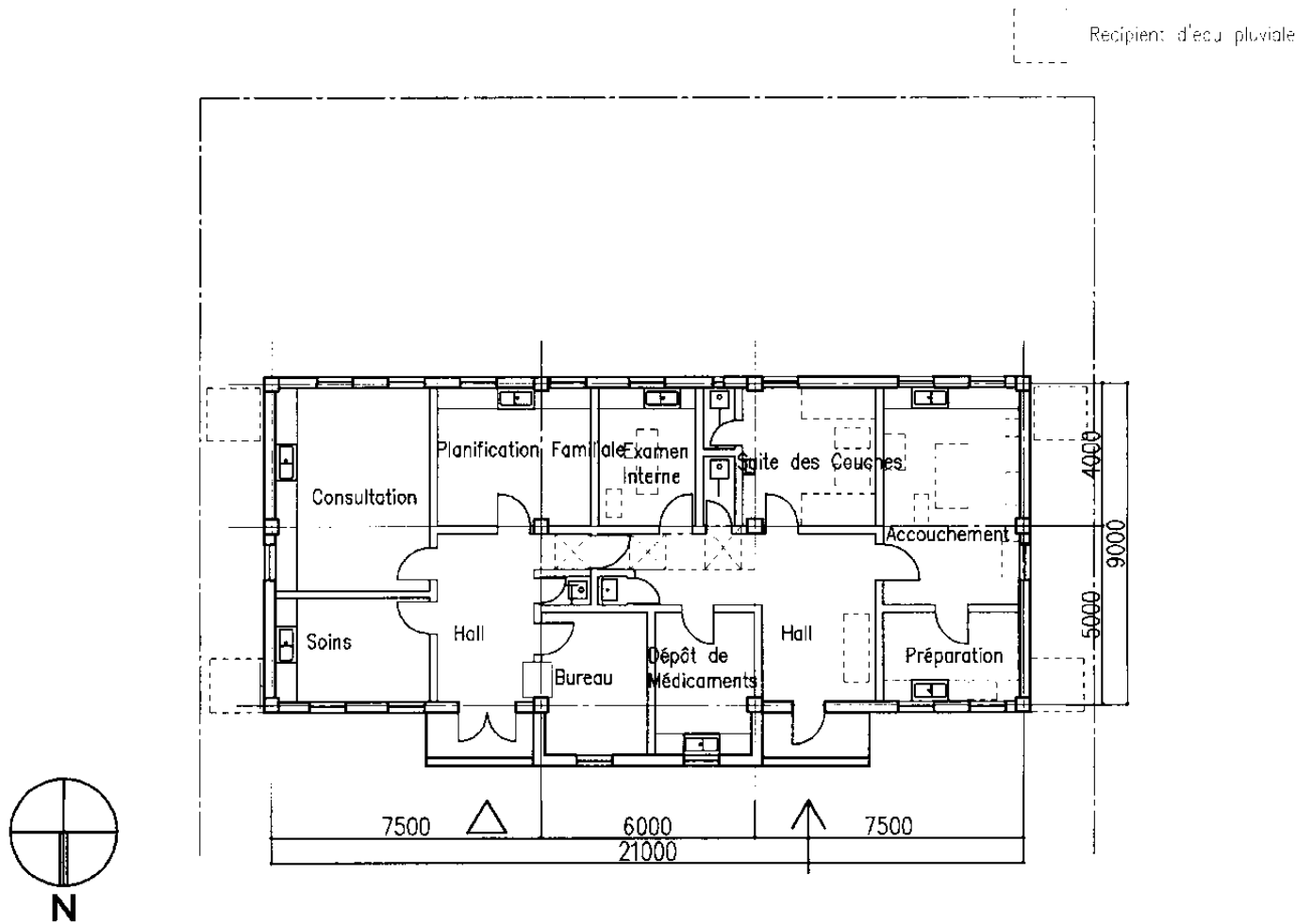
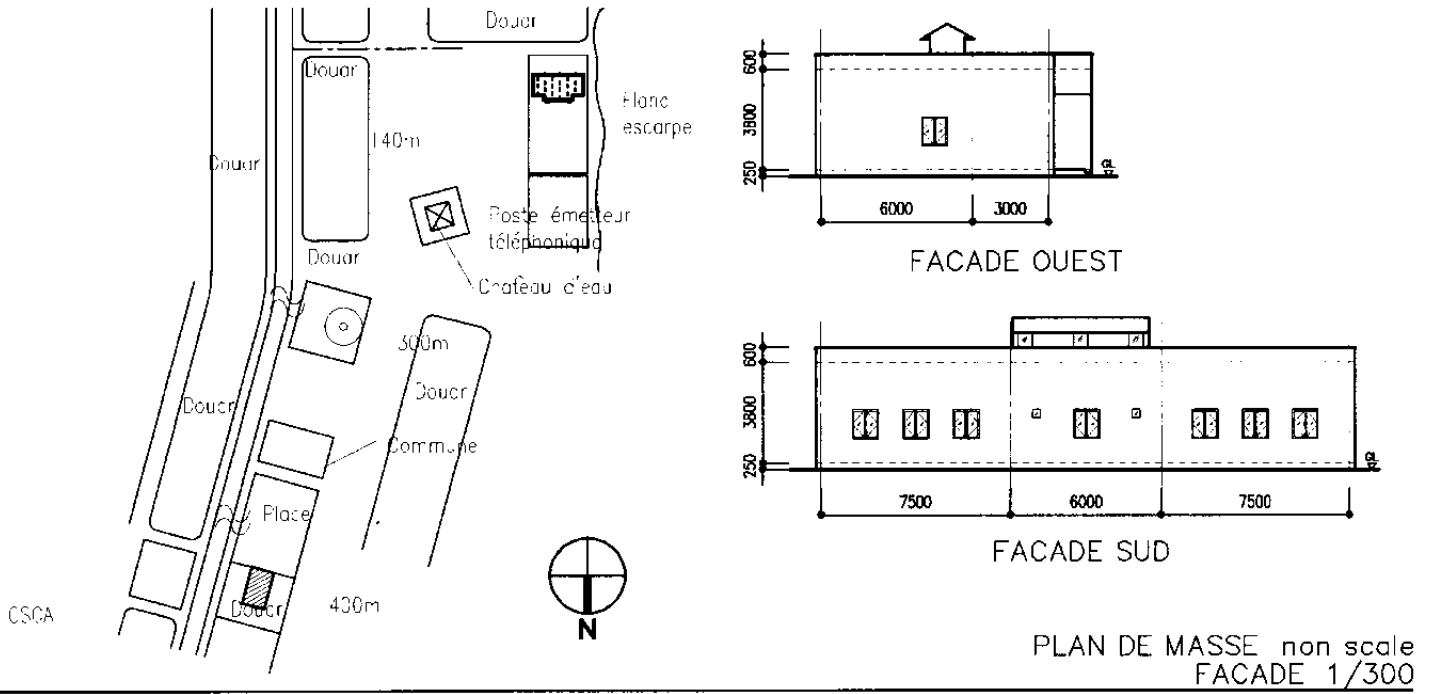
PLAN DE MASSE 1/1000
FACADE 1/300



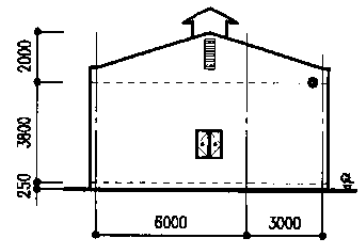
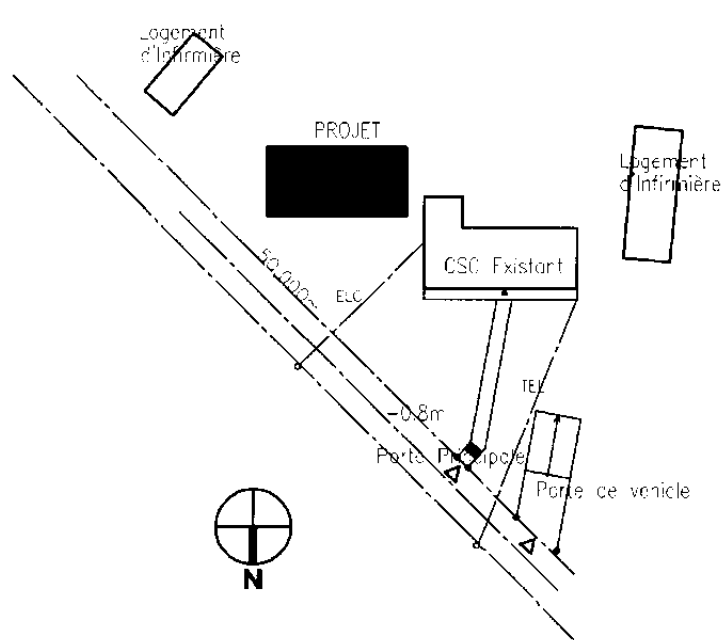
PLAN D'ETAGE 1/200
No.15 Mrit



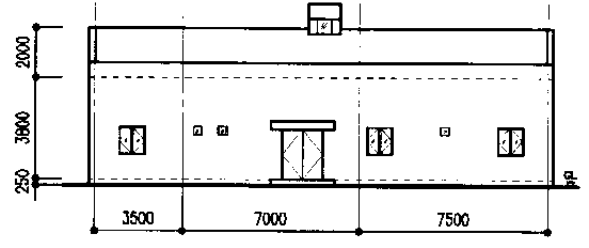
ROYAUME DU MAROC, L'ETUDE DU CONCEPT DE BASE POUR
LE PROJET D'AMELIORATION DES SOINS DE SANTE MATERNELE EN MILIEU RURAL



ROYAUME DU MAROC, L'ETUDE DU CONCEPT DE BASE POUR
LE PROJET D'AMELIORATION DES SOINS DE SANTE MATERNELE EN MILIEU RURAL

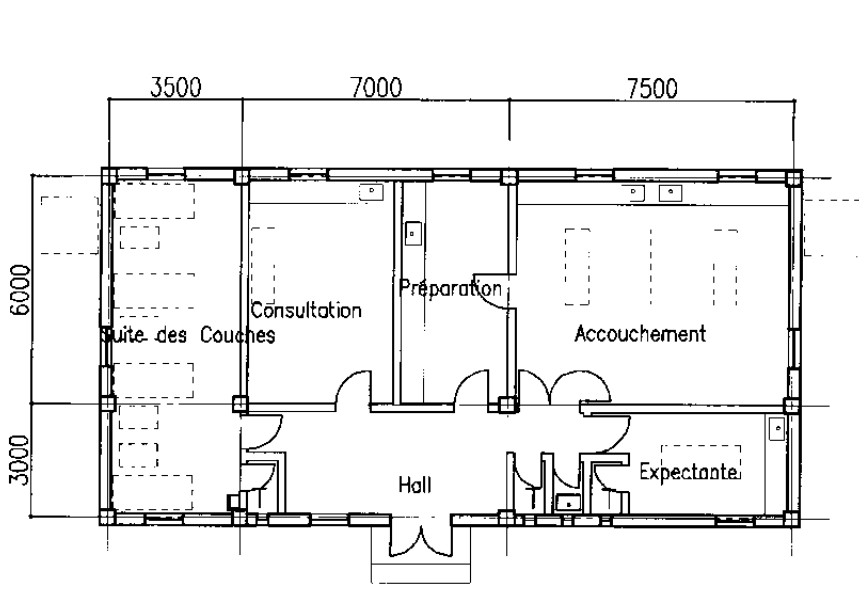


FACADE EST

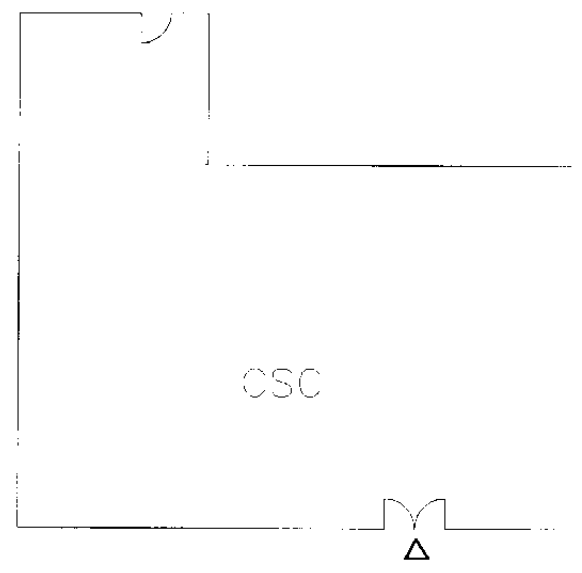


FACADE NORD

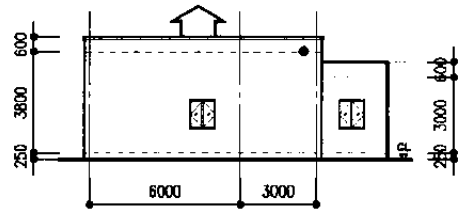
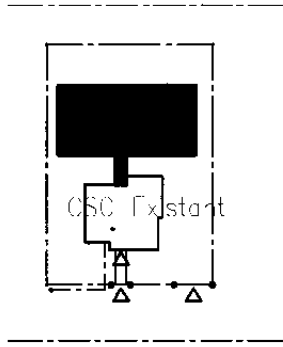
PLAN DE MASSE 1/1000
FACADE 1/300



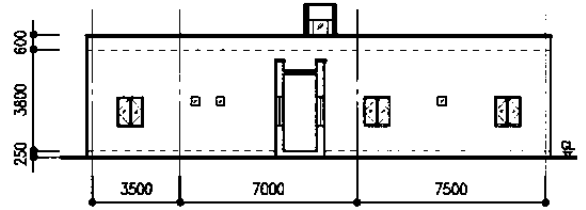
□ Recipient d'eau pluviale



PLAN D'ETAGE 1/200
No.18 Tounefite

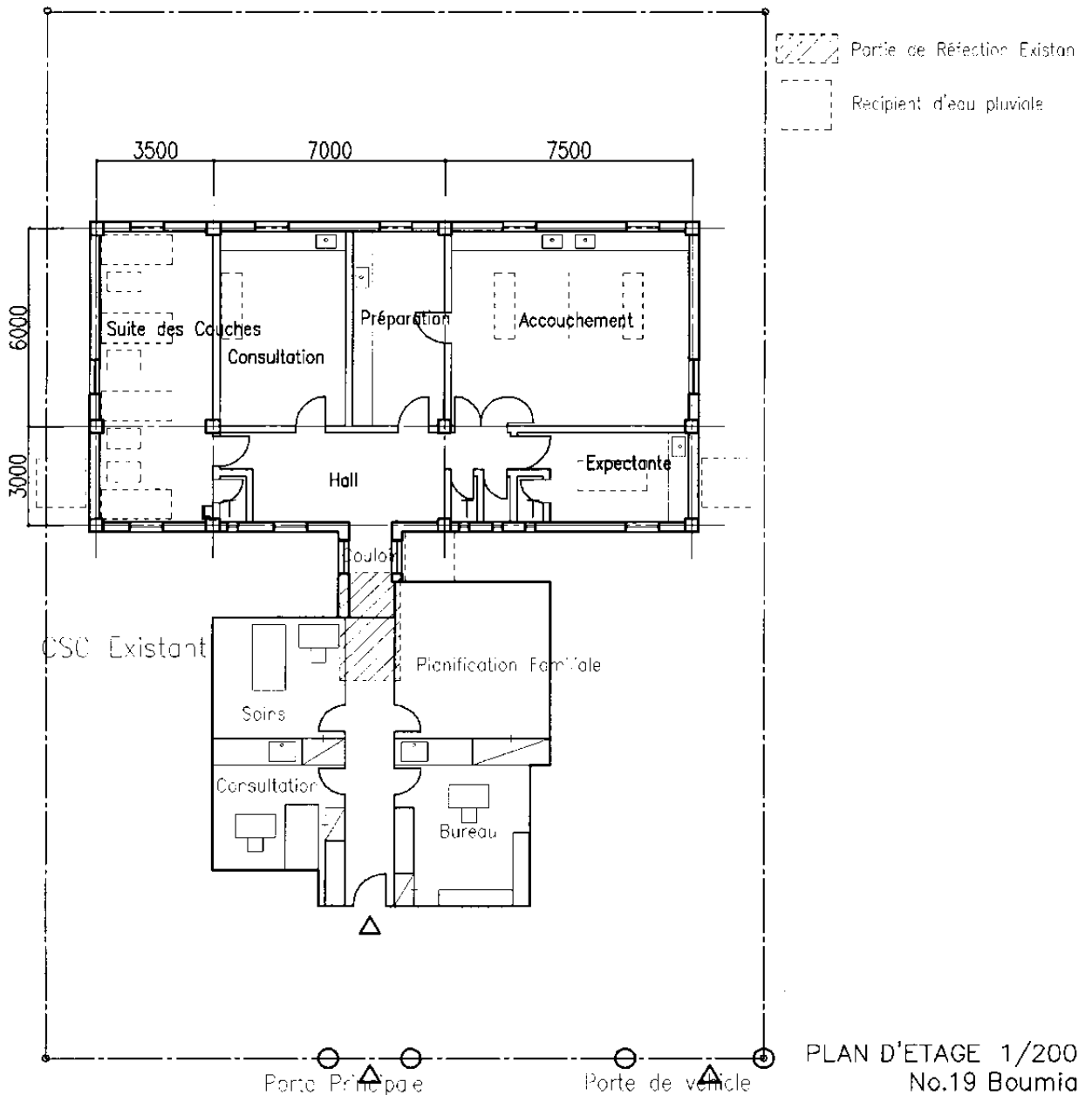


FACADE OUEST



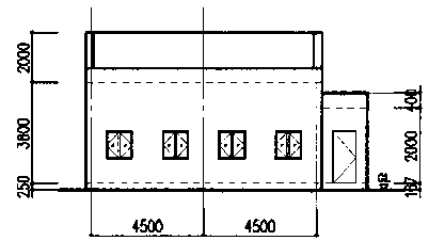
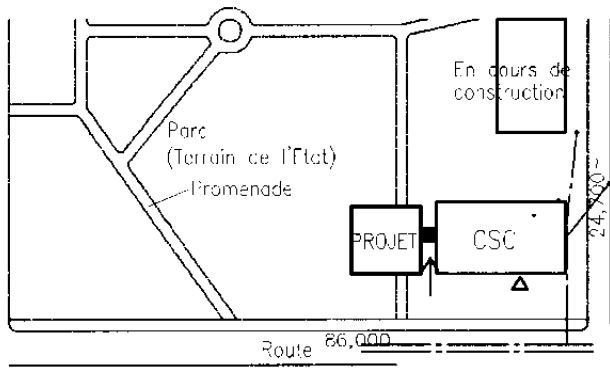
FACADE SUD

PLAN DE MASSE 1/1000
FACADE 1/300

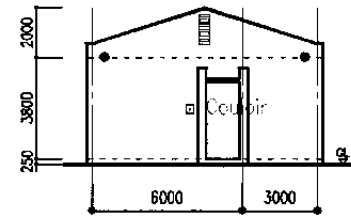


PLAN D'ETAGE 1/200
No.19 Boumia

ROYAUME DU MAROC, L'ETUDE DU CONCEPT DE BASE POUR
LE PROJET D'AMELIORATION DES SOINS DE SANTE MATERNELE EN MILIEU RURAL



FACADE SUD

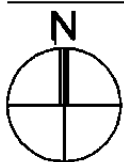
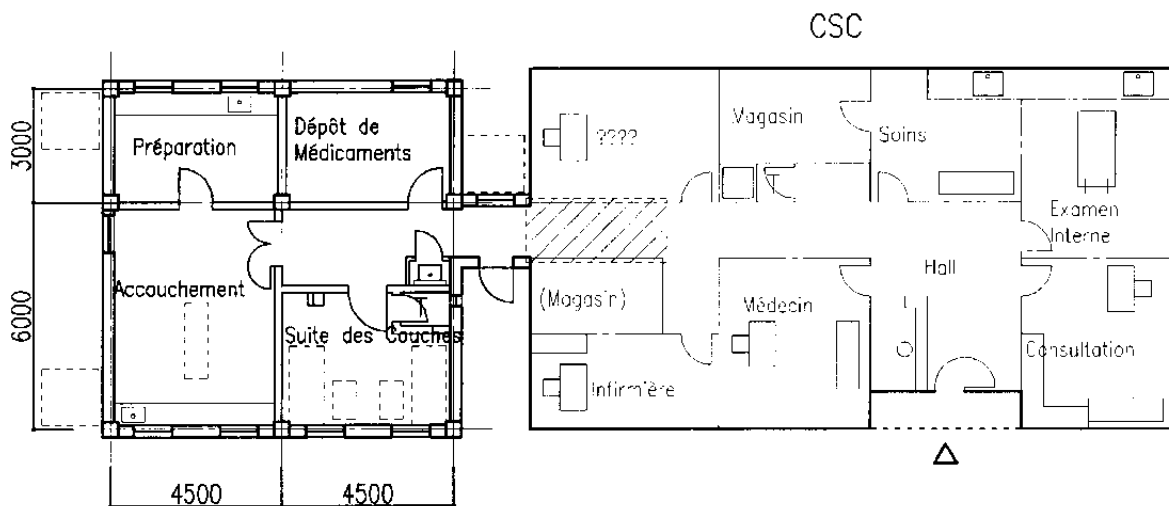


FACADE EST

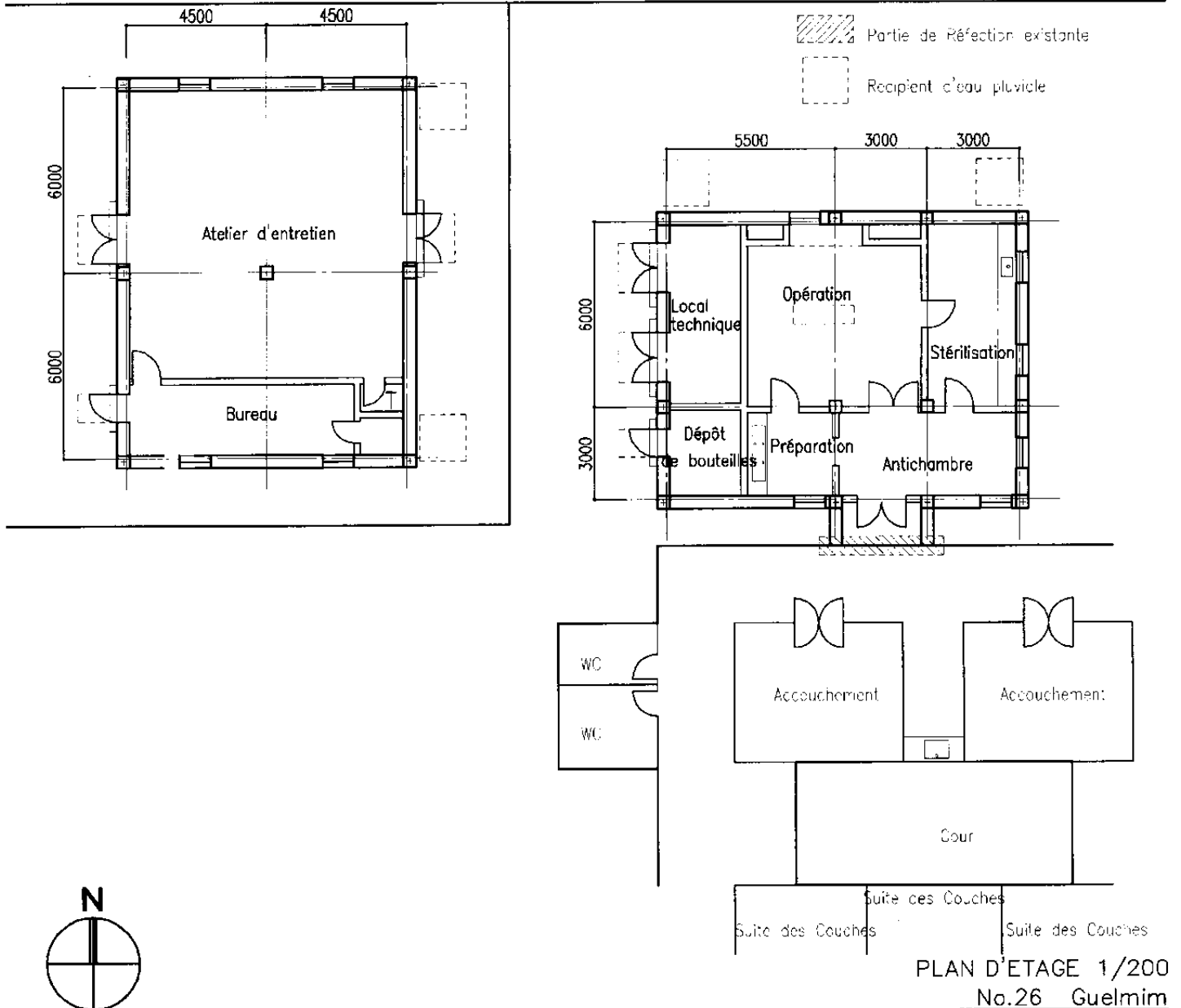
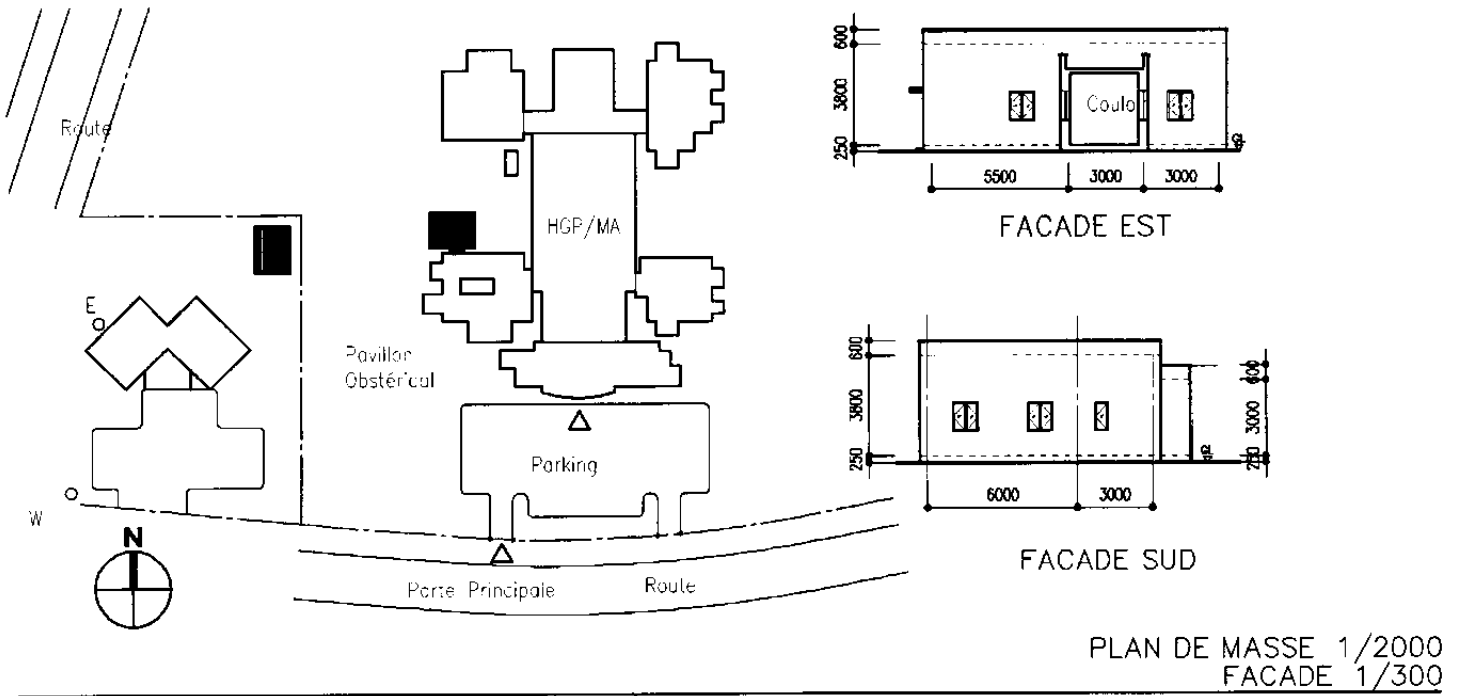
PLAN DE MASSE 1/1000
FACADE 1/300

Partie de Réfection existante

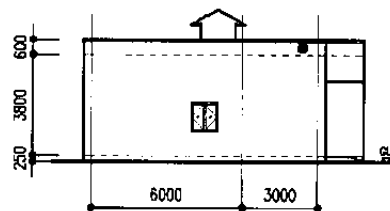
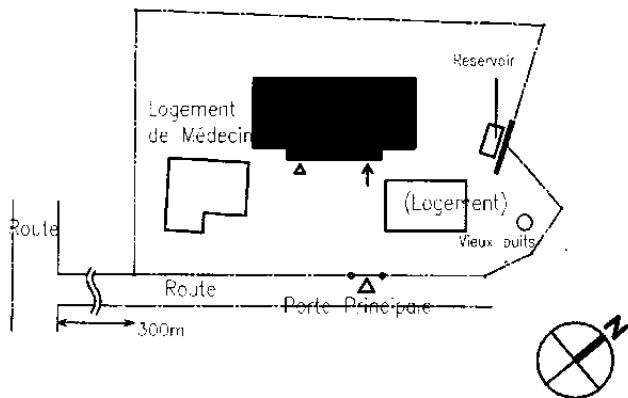
Réceptif d'ecu pluviale



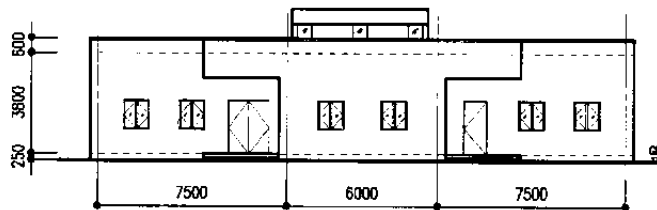
PLAN D'ETAGE 1/200
No.22 Ifrane



ROYAUME DU MAROC, L'ETUDE DU CONCEPT DE BASE POUR LE PROJET D'AMELIORATION DES SOINS DE SANTE MATERNELE EN MILIEU RURAL



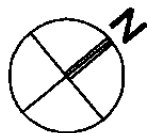
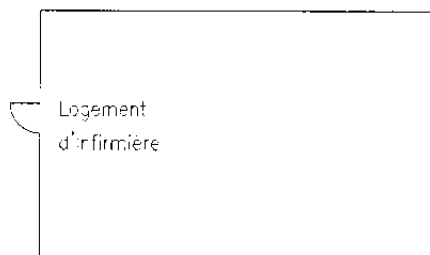
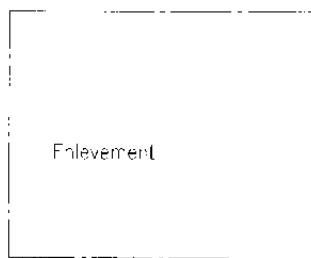
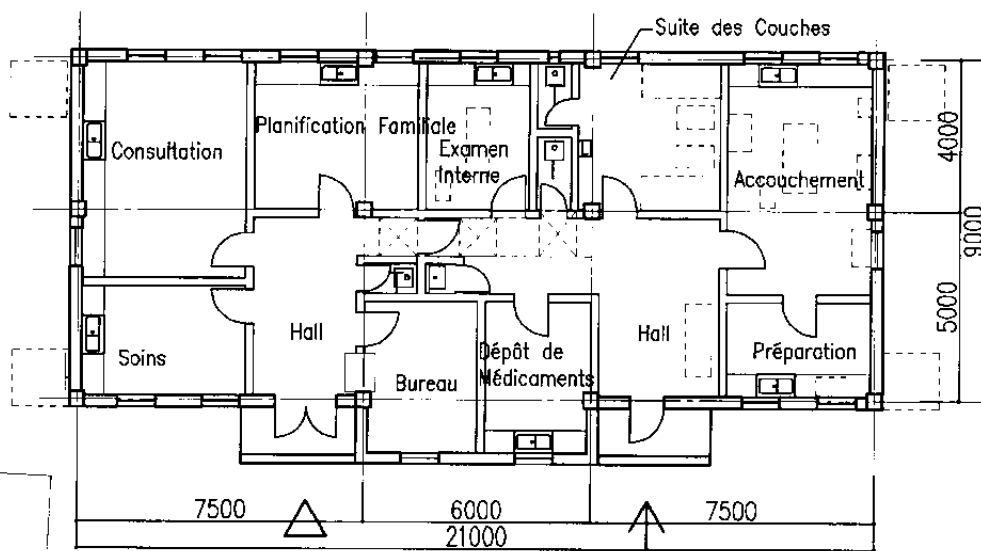
FACADE OUEST



FACADE SUD

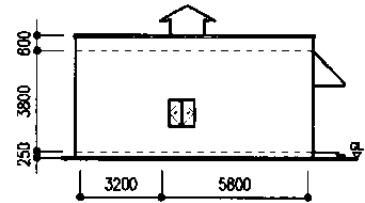
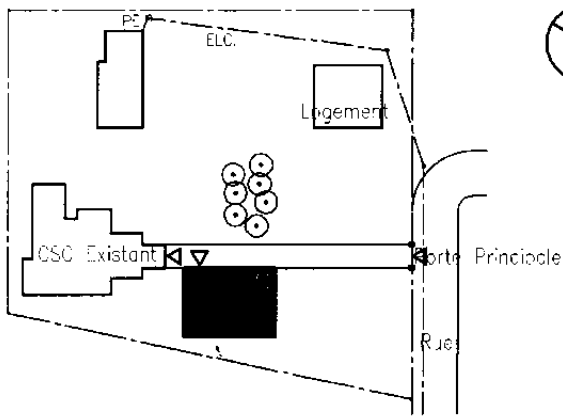
PLAN DE MASSE 1/1000
FACADE 1/300

Recipient d'eau pluviale

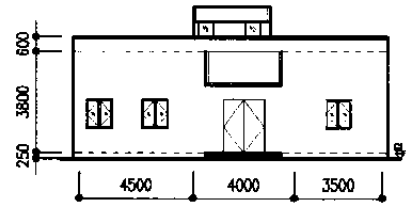


PLAN D'ETAGE 1/200
No.28 Fask

ROYAUME DU MAROC, L'ETUDE DU CONCEPT DE BASE POUR
LE PROJET D'AMELIORATION DES SOINS DE SANTE MATERNELE EN MILIEU RURAL



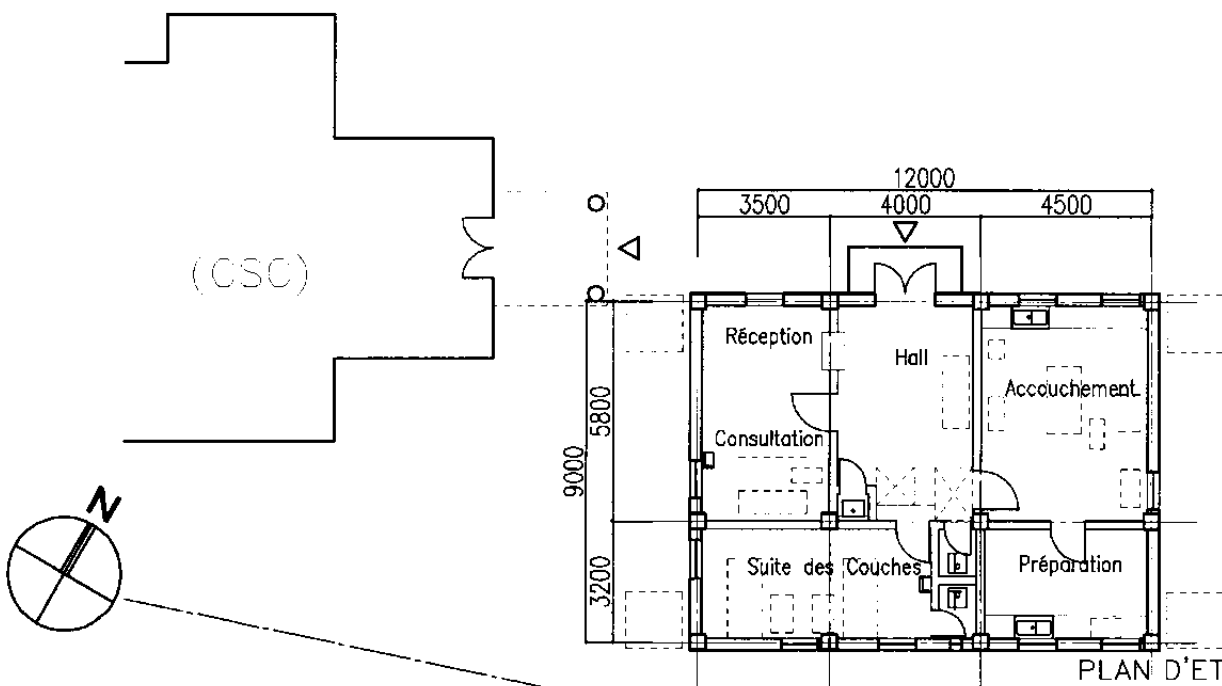
FACADE EST



FACADE NORD

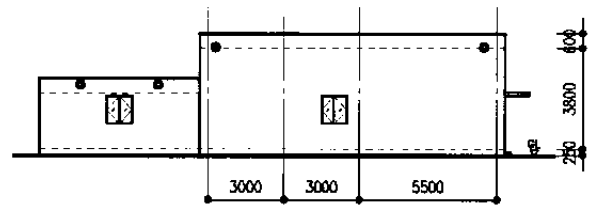
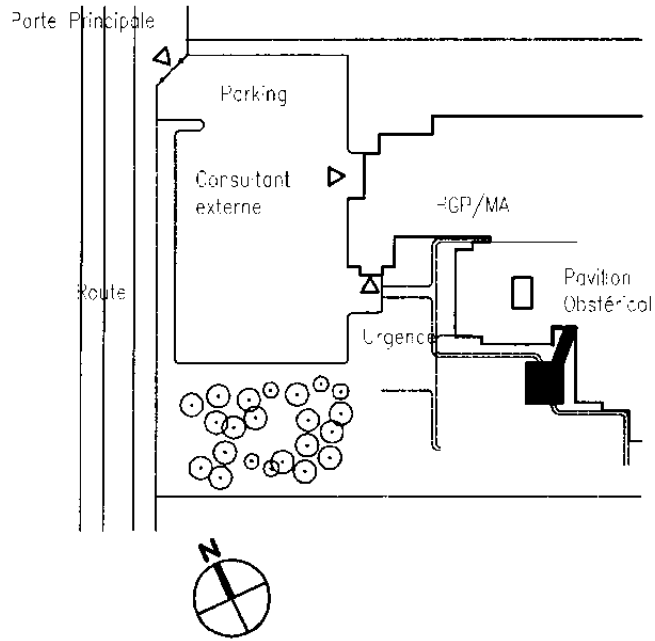
PLAN DE MASSE 1/1000
FACADE 1/300

Recipient d'eau pluviale

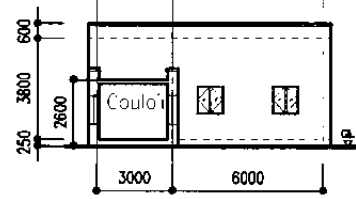


PLAN D'ETAGE 1/200
No.29 Ifrane Guelmin

ROYAUME DU MAROC, L'ETUDE DU CONCEPT DE BASE POUR
LE PROJET D'AMELIORATION DES SOINS DE SANTE MATERNELE EN MILIEU RURAL

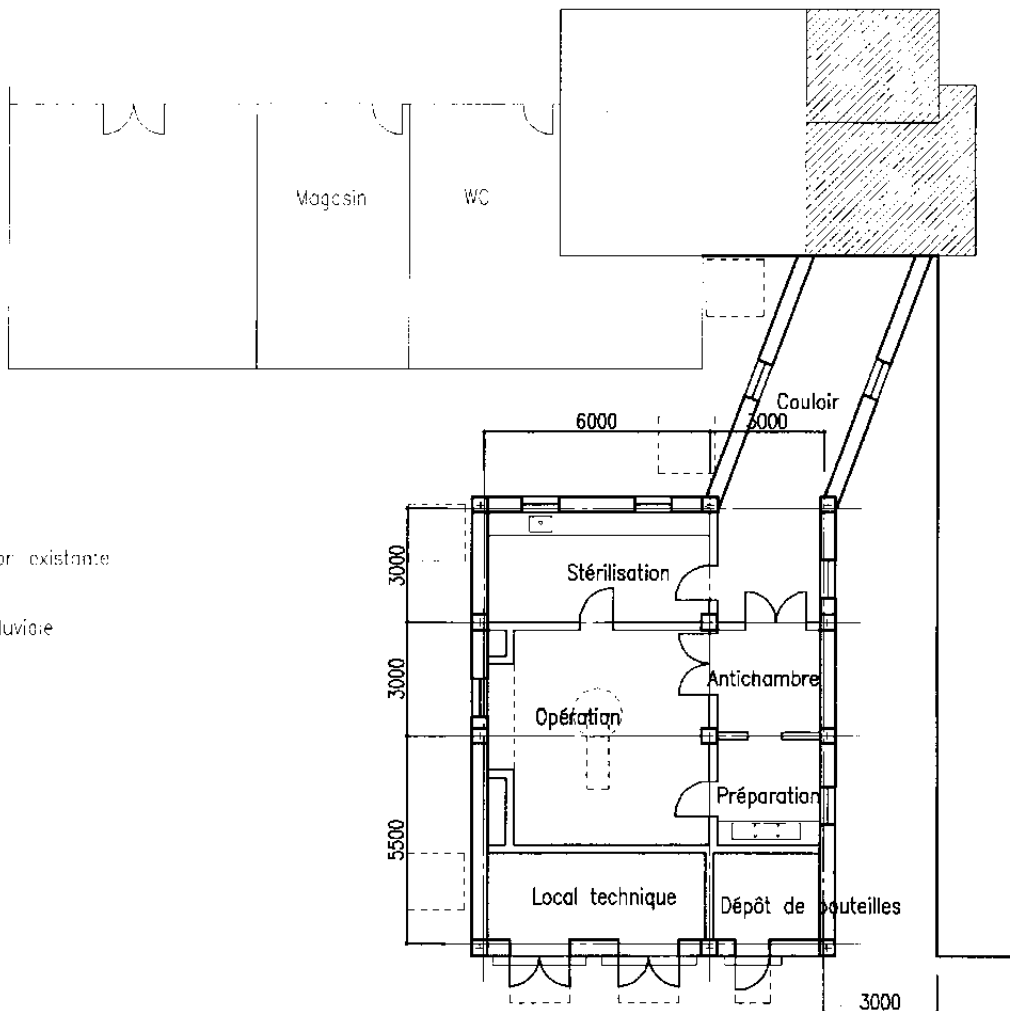


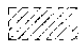
FACADE OUEST




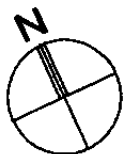
FACADE NORD

PLAN DE MASSE 1/1000
FACADE 1/300



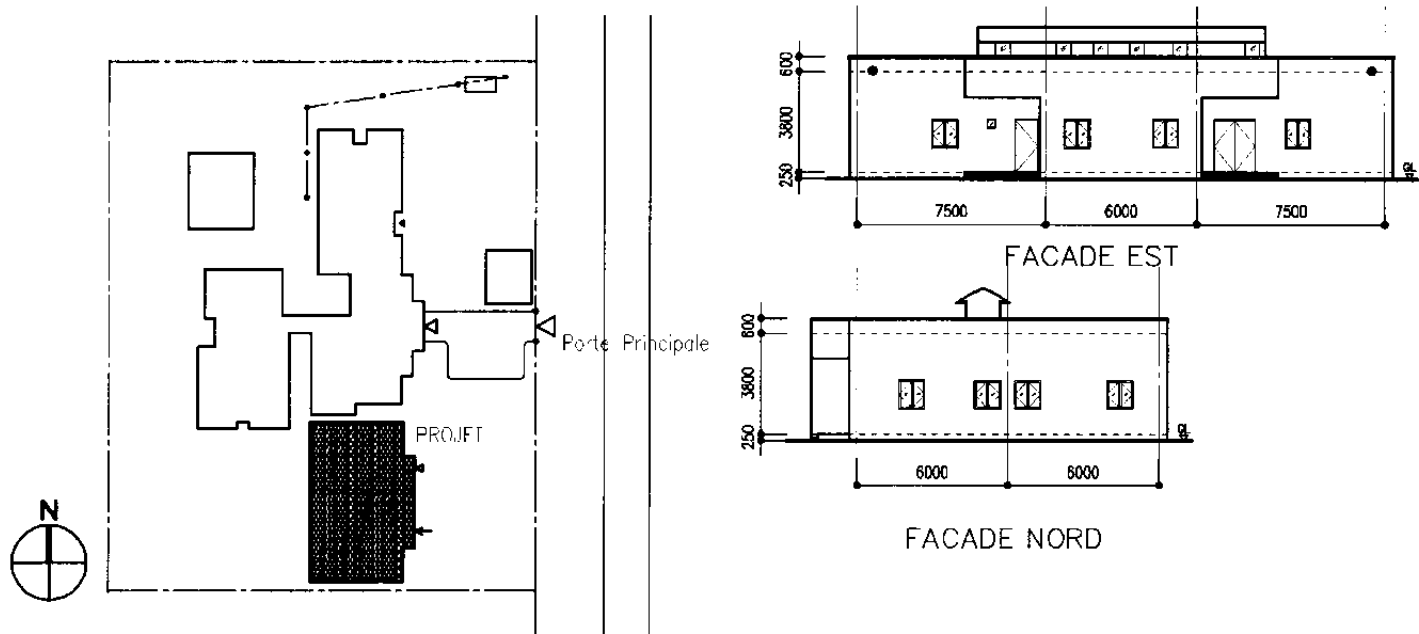
 Partie de Réfectoir existante

 Recipient d'eau pluviale

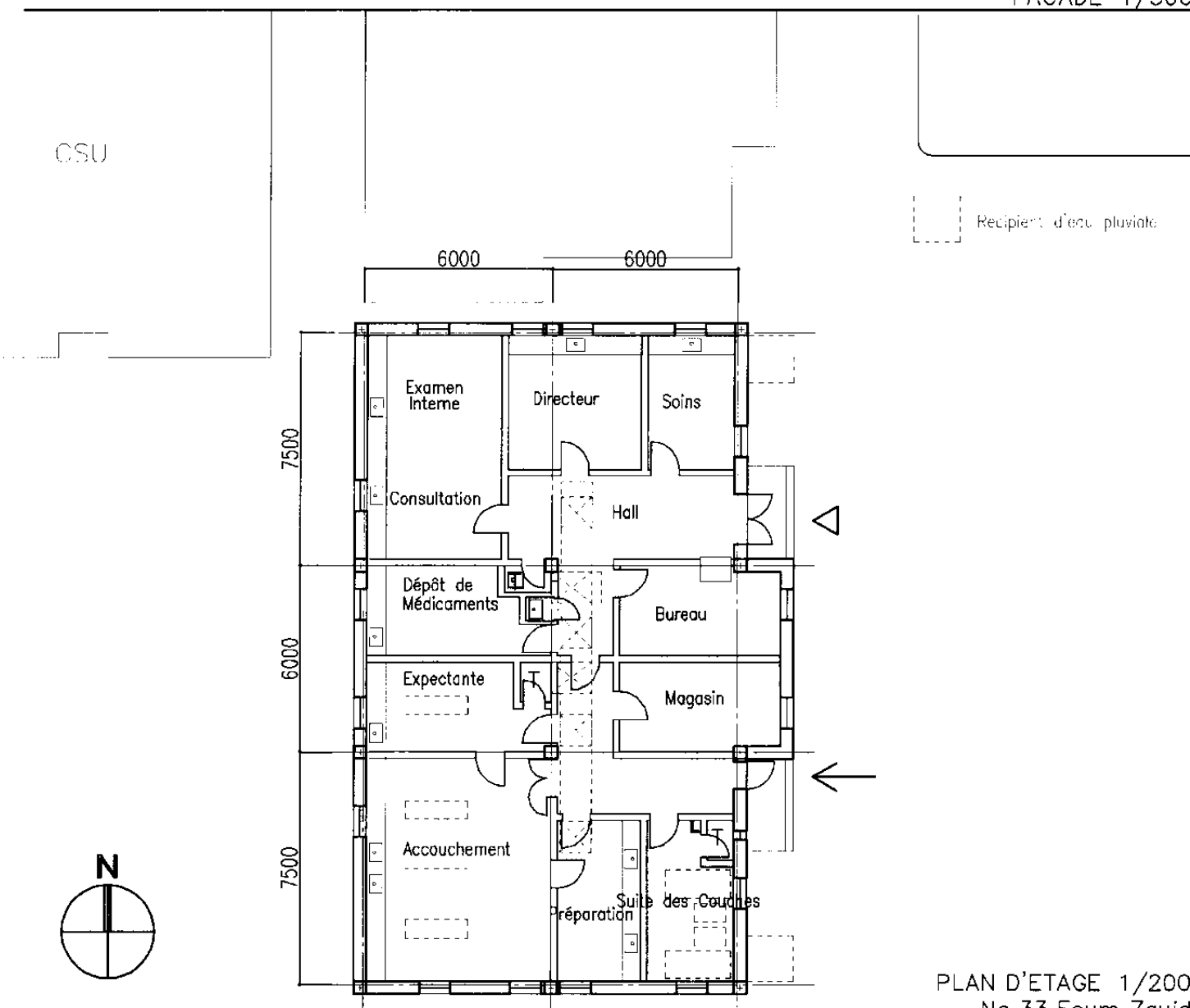


PLAN D'ETAGE 1/200
No.30 Hassan I

ROYAUME DU MAROC, L'ETUDE DU CONCEPT DE BASE POUR
LE PROJET D'AMELIORATION DES SOINS DE SANTE MATERNELE EN MILIEU RURAL

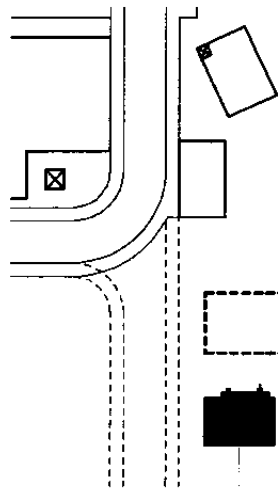


PLAN DE MASSE 1/1000
FACADE 1/300

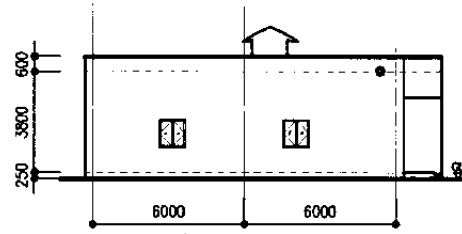


PLAN D'ETAGE 1/200
No.33 Foun Zguid

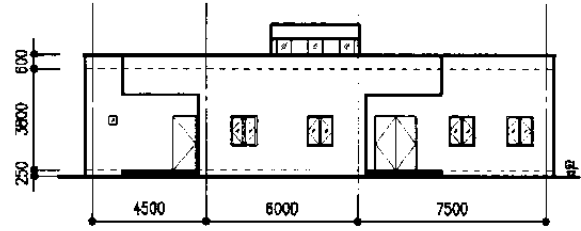
ROYAUME DU MAROC, L'ETUDE DU CONCEPT DE BASE POUR
LE PROJET D'AMELIORATION DES SOINS DE SANTE MATERNELE EN MILIEU RURAL



PROJET



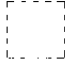
FACADE EST

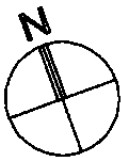
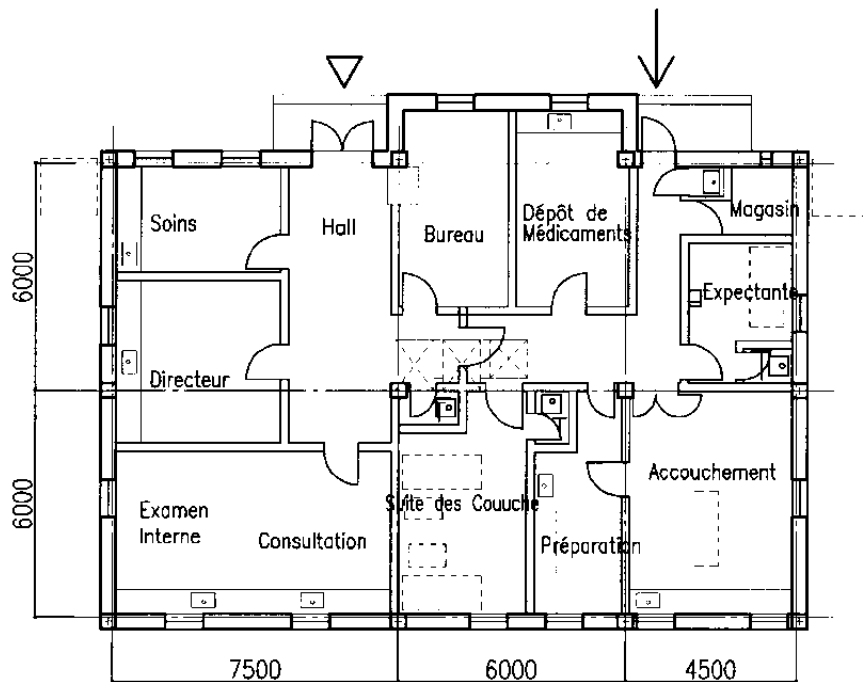


FACADE NORD

PLAN DE MASSE 1/2000
FACADE 1/300

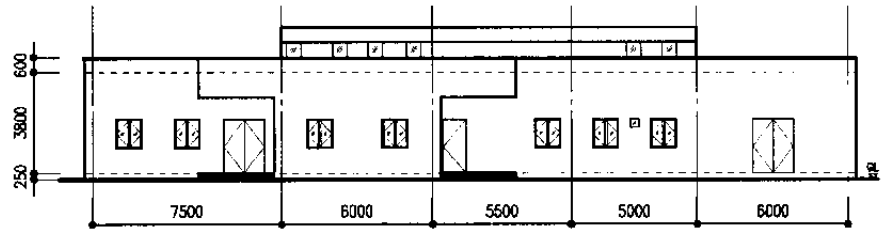
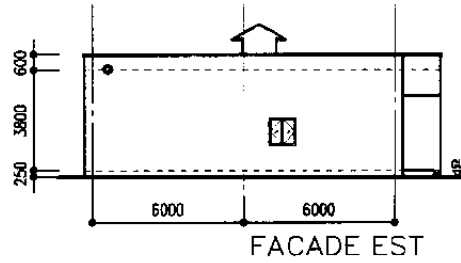
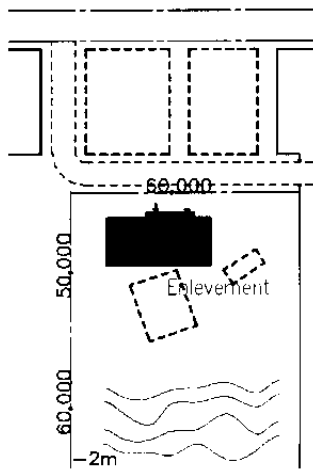


 Recipient d'eau potable

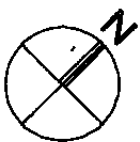
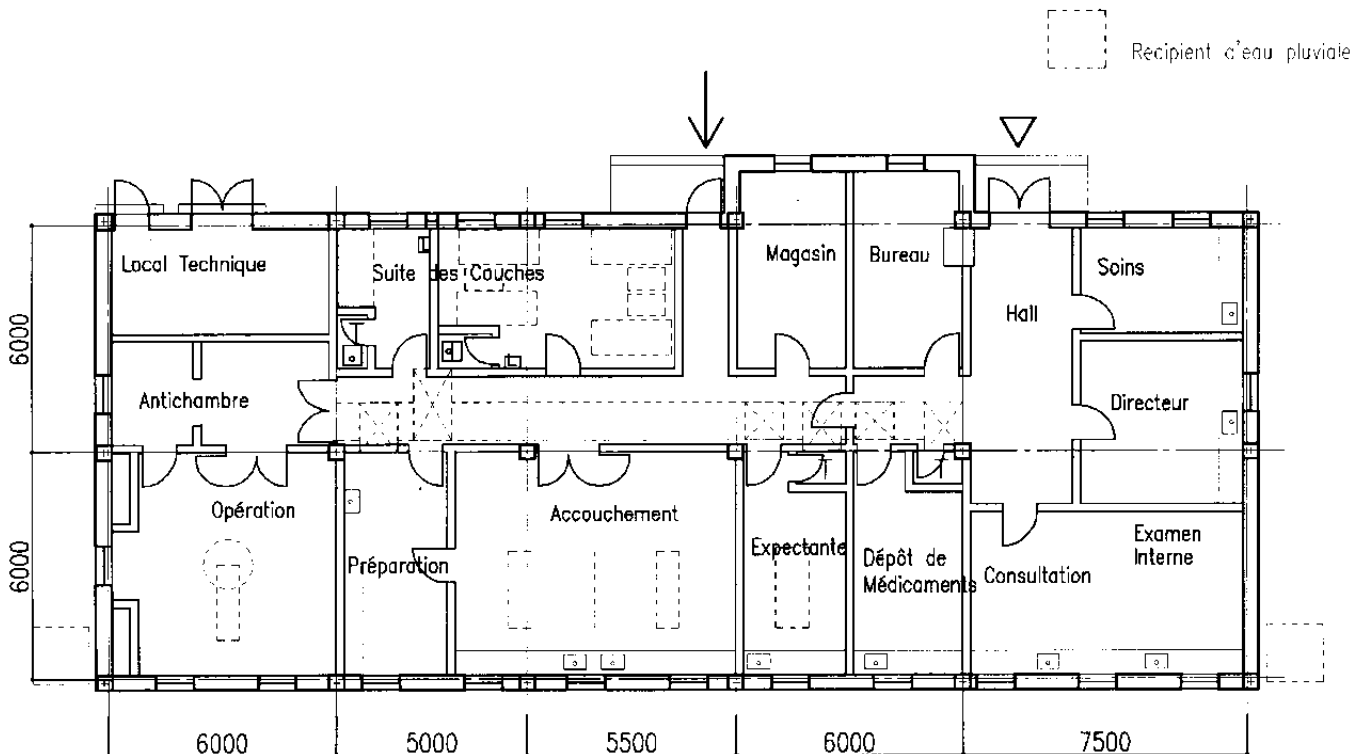


PLAN D'ETAGE 1/200
No.34 Foun EL Hisin

ROYAUME DU MAROC, L'ETUDE DU CONCEPT DE BASE POUR
LE PROJET D'AMELIORATION DES SOINS DE SANTE MATERNELE EN MILIEU RURAL



PLAN DE MASSE 1/1000
FACADE 1/300



PLAN D'ETAGE 1/200
No.37 Tata

ROYAUME DU MAROC, L'ETUDE DU CONCEPT DE BASE POUR
LE PROJET D'AMELIORATION DES SOINS DE SANTE MATERNELE EN MILIEU RURAL