

K. Resultados de Análisis Microscópico de Superficies Pulidas

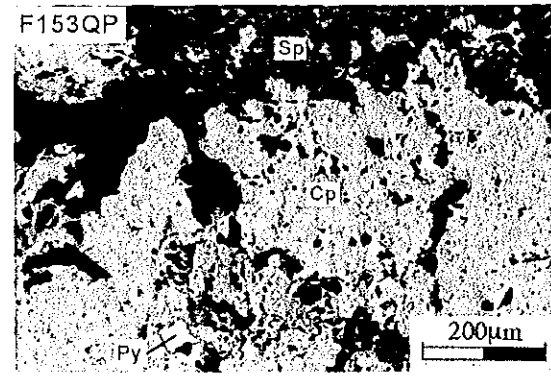
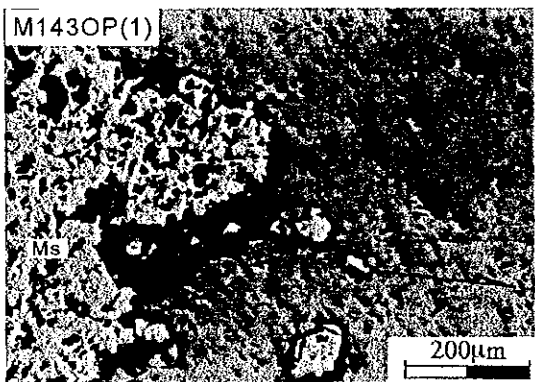
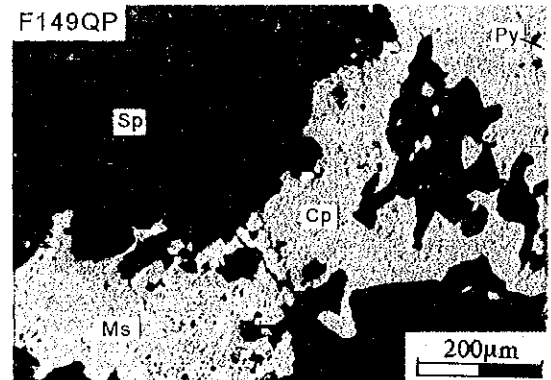
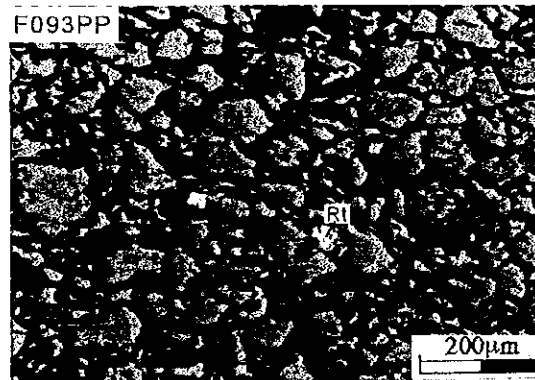
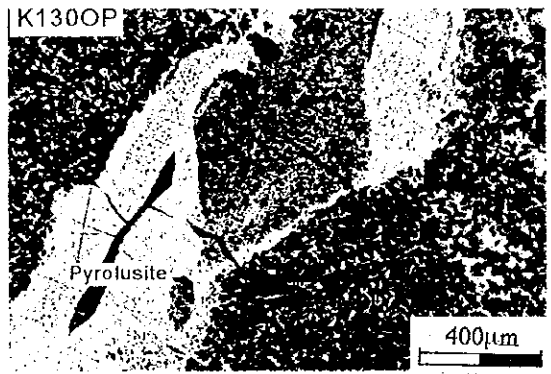
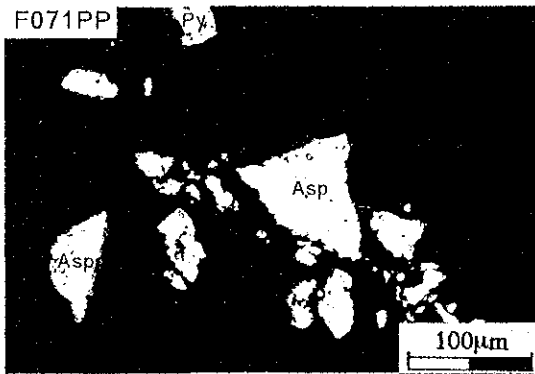
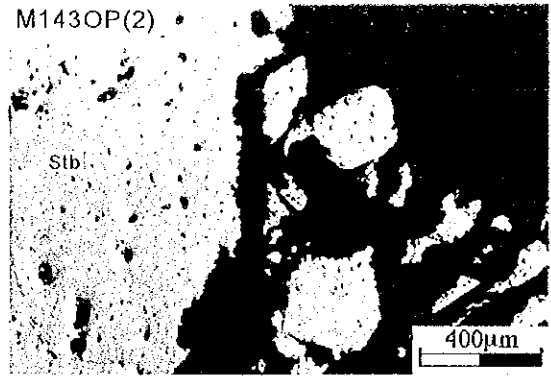
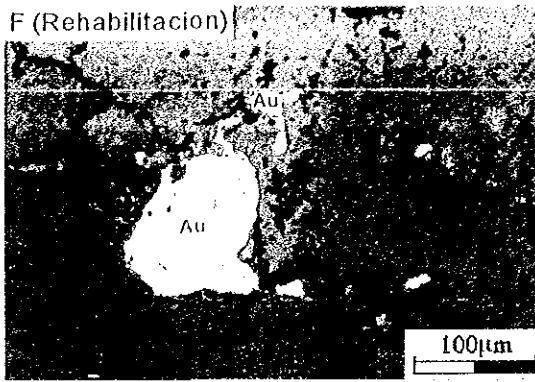
K 鉱石研磨片検鏡結果一覧表 Resultados de Calcográficos

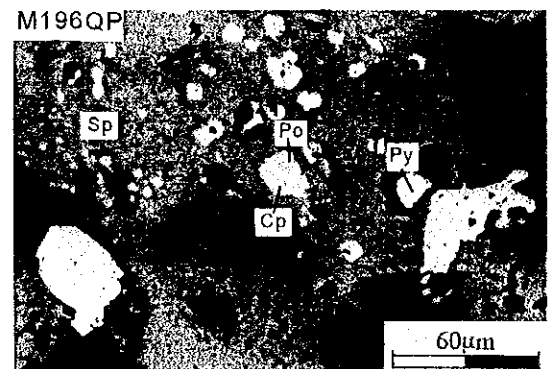
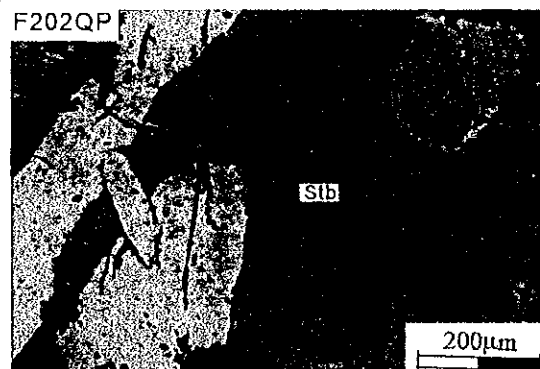
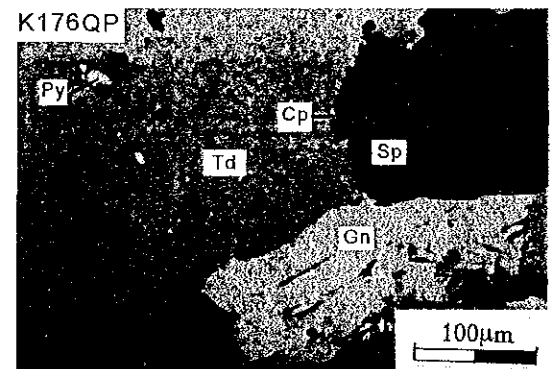
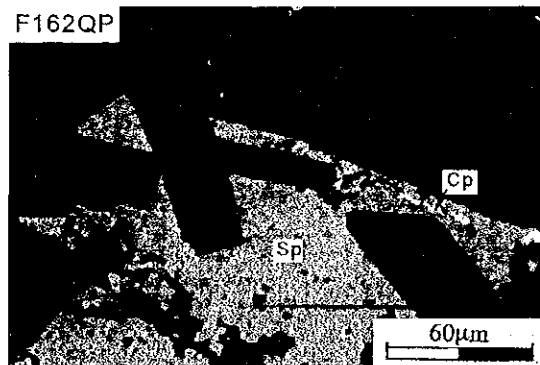
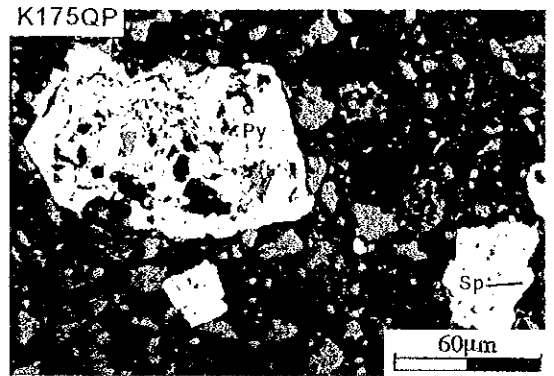
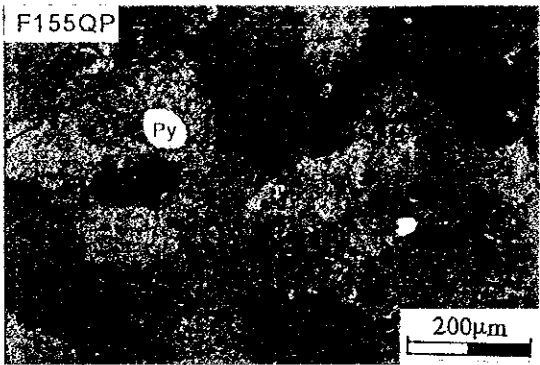
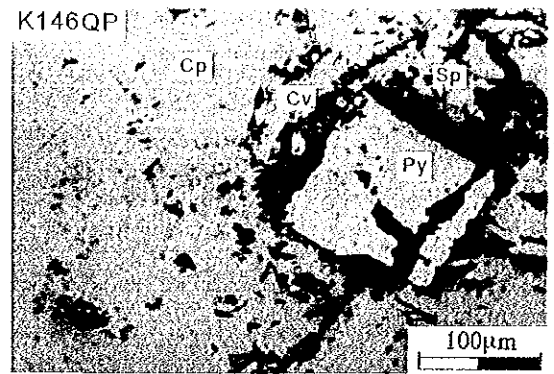
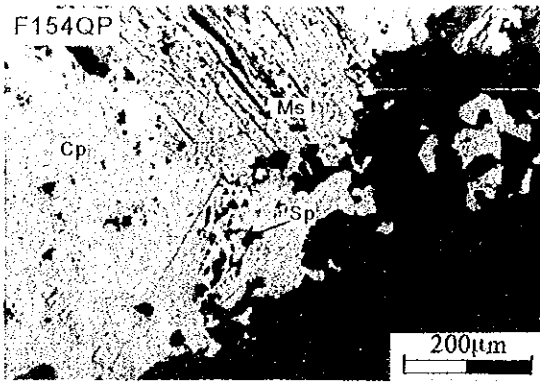
No.	地区 Sector	試料名 Muestra	自然金 Oro nativo	四面銅鉱 Tetraedrita	輝安鉱 Antimonita	黄鉄鉱 Pirita	砒硫鉄鉱 Arsenopirita	白鉄鉱 Marcasita	磁硫鉄鉱 Pyroho	マンギーン/磁 Mackinawit	閃亜鉛鉱 Esfalerita	方鉛鉱 Galena	黄銅鉱 Calcopirita	輝銅鉱 Calcocita	コペリン Covellina	赤鉄鉱 Hematita	磁鉄鉱 Magnetita	スマイス鉱 Smythita	針鉄鉱 Goethita	鱗鉄鉱 Lepidocrocita	Mn 酸化物 Mn-oxide	ルチル Rutile	備考 Nota
1	Palmillas	F (Rehabilitacio	△			•	○																Rehabilitacion
2	Palmillas	F071P P				•																	Palmillas #4
3	Palmillas	F093P P																					• Rehabilitacion 4
4	Ocoatepeque	M1430 P(1)				△		○				◎											El Durazno
5	Ocoatepeque	M1430 P(2)			◎																		El Durazno
6	Ocoatepeque	K1300 P																	△		◎		
7	Quitagana	F1490 P				△		○			◎		•						△				Quitagana
8	Quitagana	F1530 P				△		△	•	◎		◎											Quitagana
9	Quitagana	F1540 P						△	•	◎		○											Quitagana
10	Quitagana	F1550 P				•		•															Quitagana
11	Quitagana	F1620 P				•					◎		△										Quitagana
12	Quitagana	F2020 P			◎	•																	
13	Quitagana	K1460 P					○				•	◎											Quitagana
14	Quitagana	K1750 P				○					•												Matasano
15	Quitagana	K1760 P		○		△				◎	○	•											Matasano
16	Quitagana	M1960 P				△			•	◎		•											Quitagana
17	Quitagana	M1980 P				△				◎		•											Quitagana
18	Quitagana	M1990 P				△				◎		•											Quitagana
19	Quitagana	M2030 P				•				◎		•											Quitagana
20	Quitagana	M2160 P			◎																		El Molo
21	Quitagana	T1350 P																	◎				
22	Quitagana	T1450 P			◎														△				Caliche
23	Comayagua	F262c P				•																	Coyolito
24	Comayagua	F263c P				△		◎															Coyolito
25	Comayagua	F265c P				•																	• Coyolito
26	Comayagua	F269c P				•																	Coyolito
27	Comayagua	K222c P				△		◎															Playon
28	Comayagua	K225c P				○		•				•											Playon
29	Comayagua	M343c P				△		•				•	•	•					•				Tepanguara
30	Comayagua	T169c P				◎													△				Playon
31	Comayagua	T170c P				◎													△				Playon
32	Aguanqueterique	F325a P				○					•												• Float
33	Guasucaran	K010g P				○						△	•	•									Rio La Sonta
34	Guasucaran	K016g P				△						•											Rio La Sonta
35	Guasucaran	T015g P				△																	Rio La Sonta
36	Guasucaran	T018g P																					• Rio La Sonta
37	Guasucaran	T019g P				•													•				• Rio La Sonta
38	Guasucaran	T025g P				•													•				Rio La Sonta
39	Guasucaran	T041g P				○																	• 2km W Rio La Sonta
40	Higüero Morado	F042h P								○	◎												Higüero Morado
41	Higüero Morado	K041h P				○													○				
42	Higüero Morado	K050h P																	•				• Las Jaguas
43	Higüero Morado	K051h P				•																	Las Jaguas
44	Higüero Morado	K052h P				•													•				• Las Jaguas
45	Higüero Morado	K066h P																	◎	○			El Bosque
46	Higüero Morado	M063h P				◎							•						△				
47	Higüero Morado	T (Higüero Morado)				◎		•		○	△												Higüero Morado
48	Higüero Morado	T045h P				△						•	•										•
49	Higüero Morado	T048h P				○		○		△	△												Higüero Morado
50	Higüero Morado	T080h P				•													•				

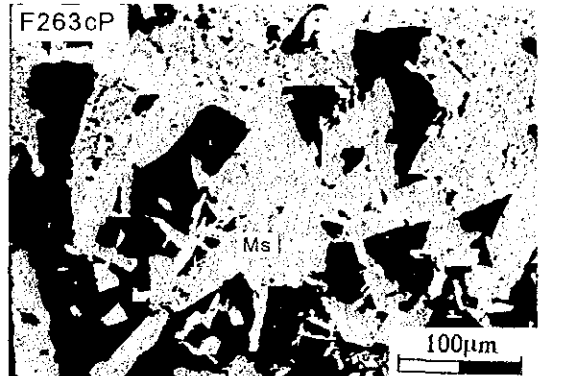
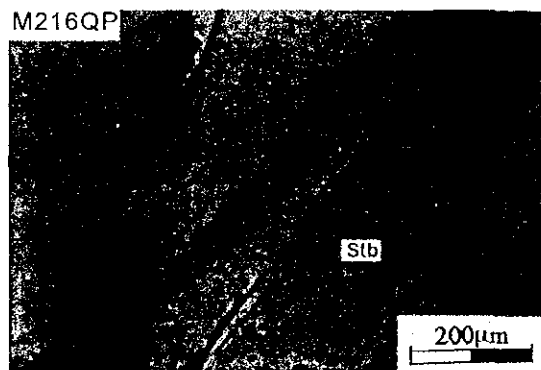
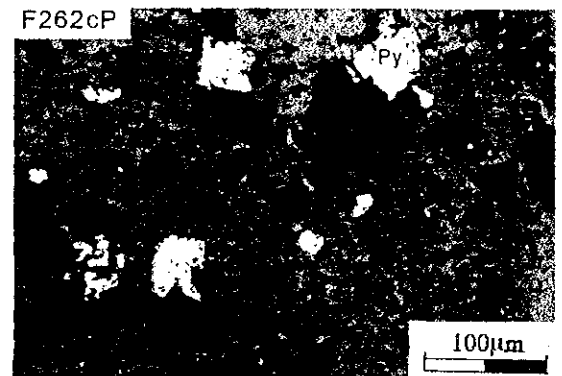
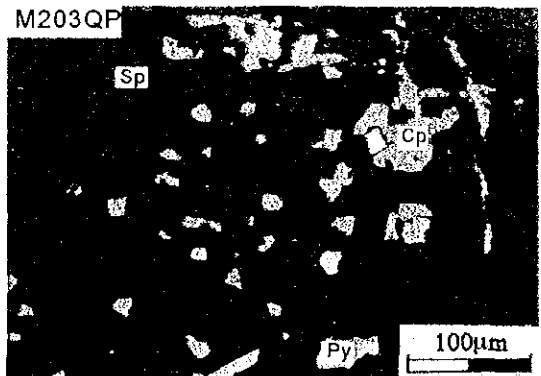
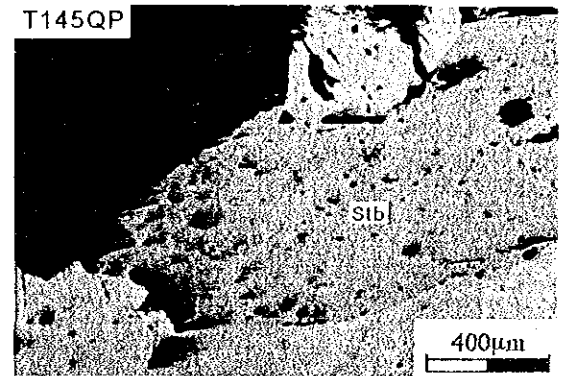
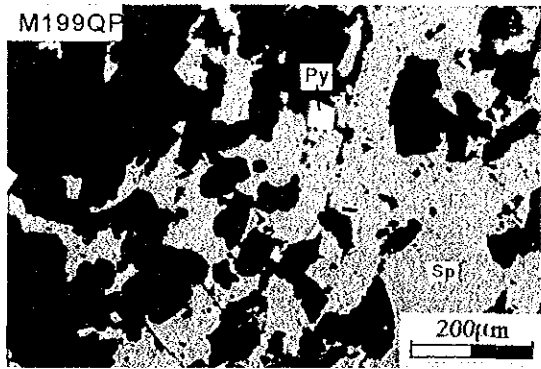
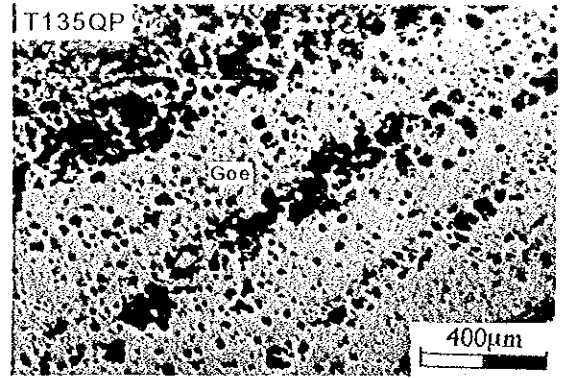
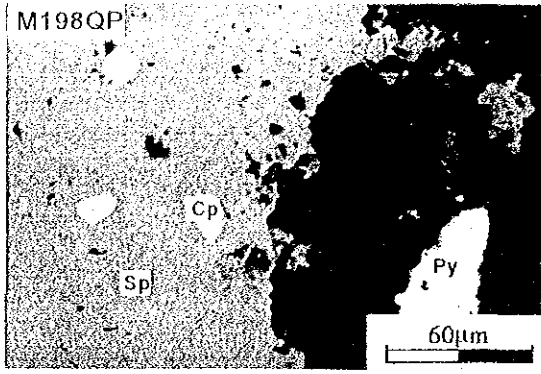
◎ : 多量 Abundante ○ : 中量 Medio △ : 少量 Poco • : 微量 Escaso

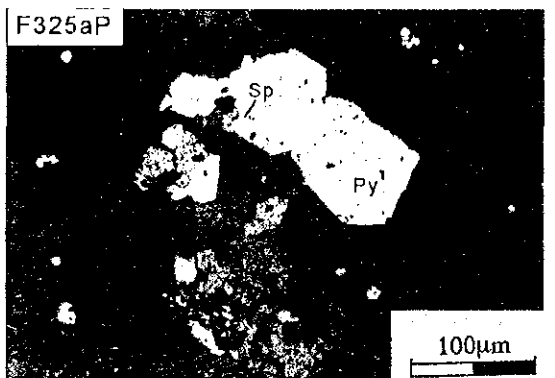
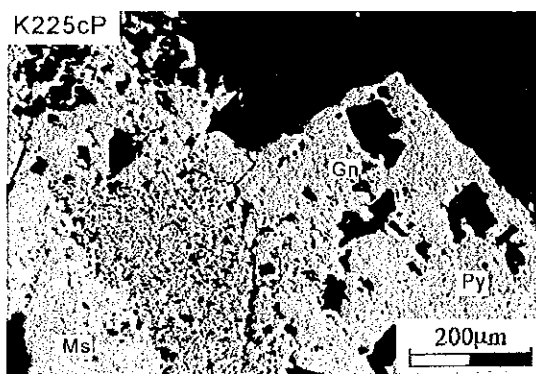
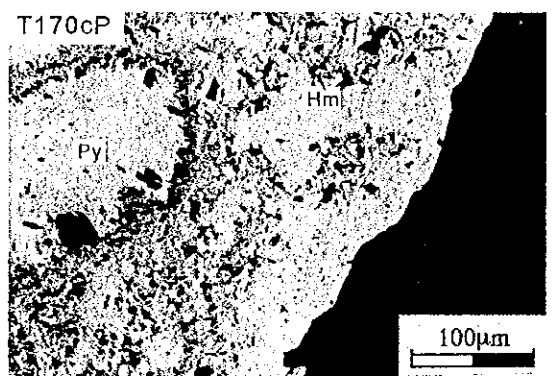
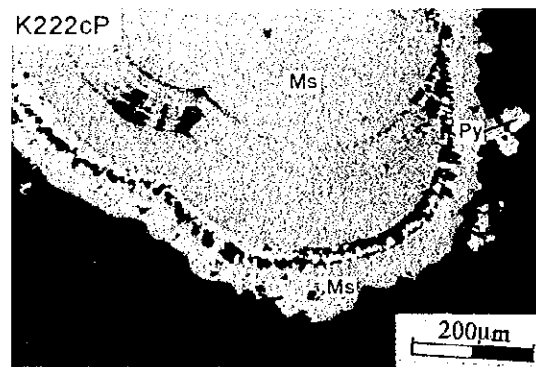
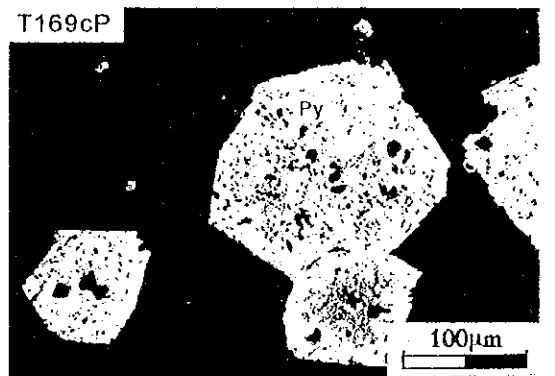
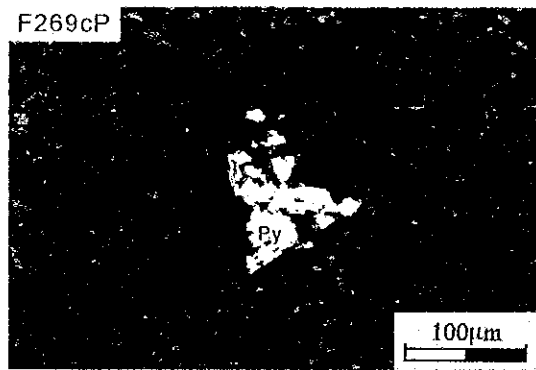
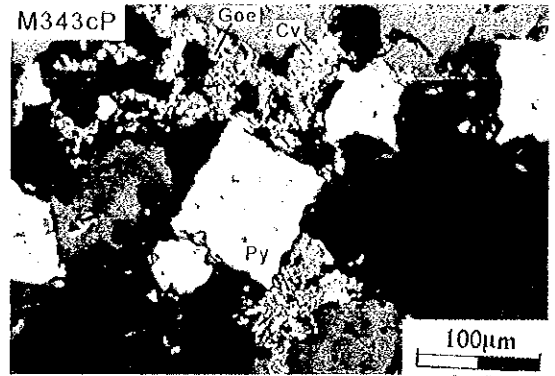
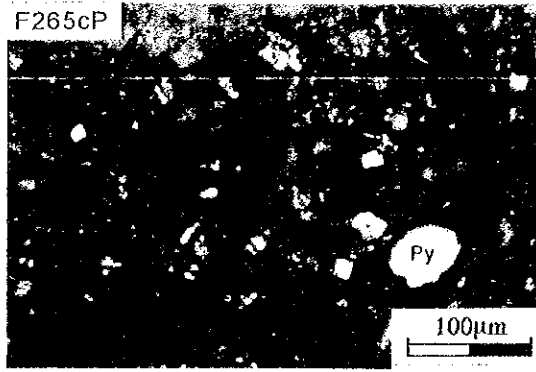
SIMBOLOGIA

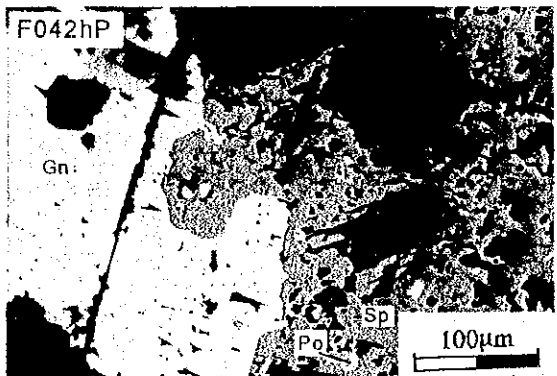
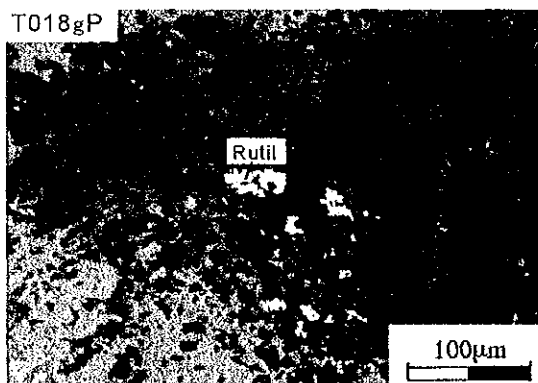
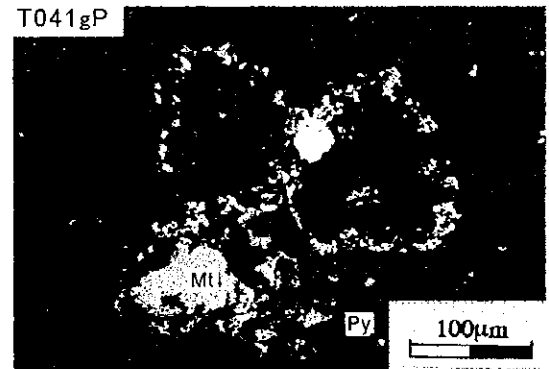
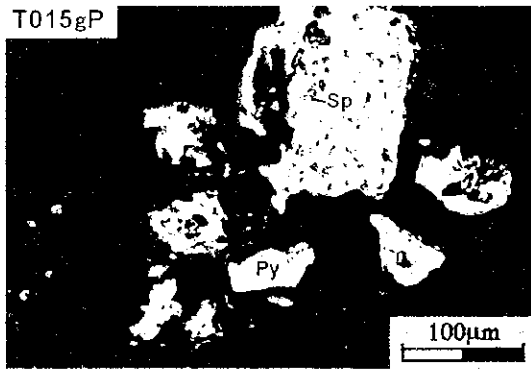
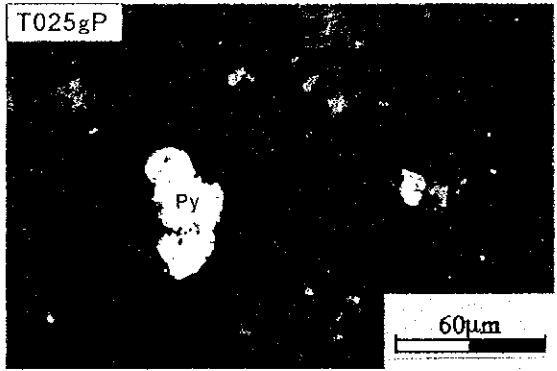
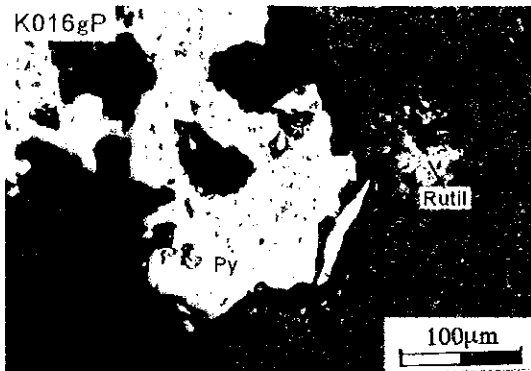
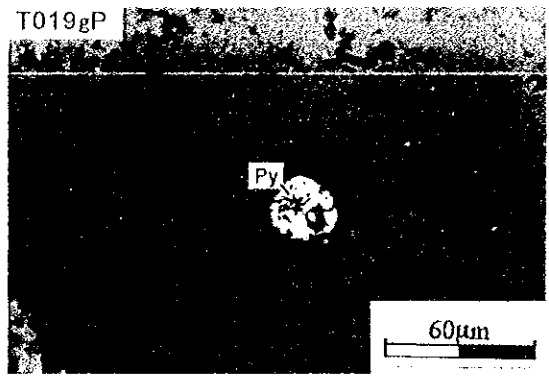
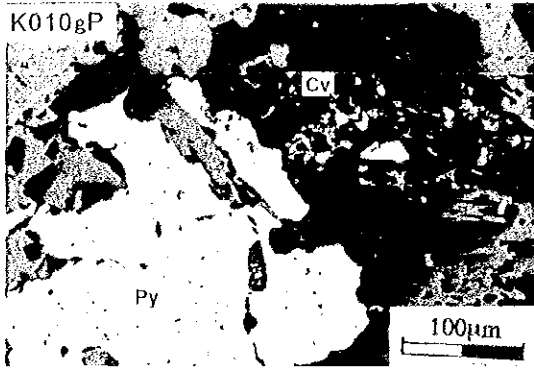
Au	gold	oro libre	Au
El	electrum	electrum	(Au,Ag)
Ag	silver	plata libre	Ag
Stro	stromeyerite	stromeyerita	CuAgS
St	stephanite	stefanita	Ag ₅ SbS ₄
Fr	freibergite	freibergita	(Ag,Cu) ₁₀ (Fe,Zn) ₂ Sb ₄ S ₁₃
Td	tetrahedrite	tetraedrita	Cu ₁₂ Sb ₄ S ₁₃
Tn	tennantite	tennantita	Cu ₁₂ As ₄ S ₁₃
SeTe	selentellurium	selentellurium	(Se,Te)
Colo	coloradoite	coloradita	HgTe
Tie	tiemanite	tiemanita	HgSe
Tell	tellurite	tellurita	TeO ₂
Py	pyrite	pirita	FeS ₂
Asp	arsenopyrite	arsenopirita	FeAsS ₂
Ms	marcasite	marcasita	FeS ₂
Po	pyrrhotite	pirrotina	Fe _{1-x} S
Sp	sphalerite	esfalerita	ZnS
Gn	galena	galena	PbS
Ce	cerussite	cerusita	PbCO ₃
Cp	chalcopyrite	calcopirita	CuFeS ₂
Cc	chalcocite	calcocina	Cu ₂ S
Cv	covellite	covellina	CuS
Mc	malachite	malaquita	Cu ₂ CO ₃ (OH) ₂
Chry	chrysocolla	crisocola	Cu ₂ H ₂ Si ₂ O ₅ (OH)·nH ₂ O
Hm	hematite	hematita	Fe ₂ O ₃
Goe	goethite	goecita	α-FeOOH
Mn	manganese oxide	oxido de manganeso	
Gra	graphite	grafito	C
Stb	stibnite	antimonita	Sb ₂ S ₃
Mt	magnetite	magnetita	Fe ₂ O ₃
Rt	rutil	rutilo	TiO ₂

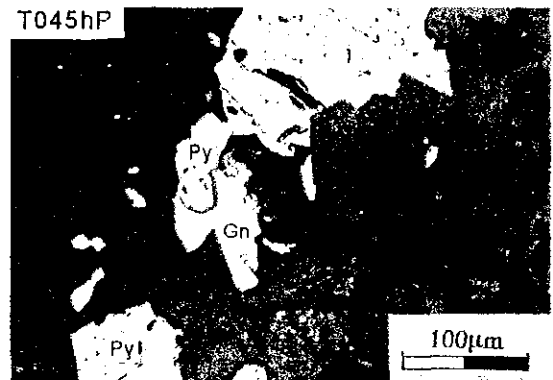
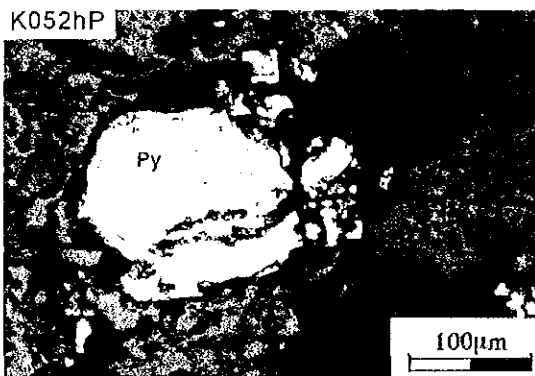
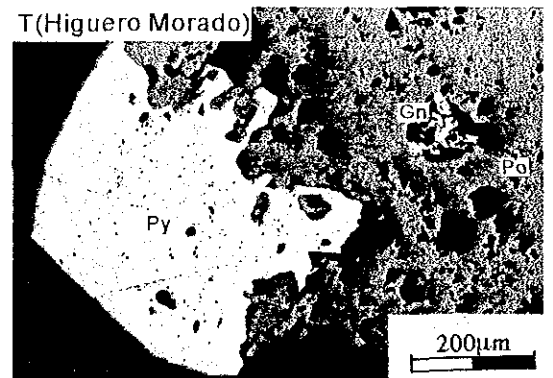
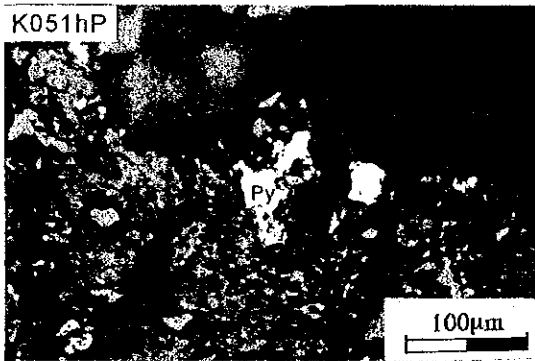
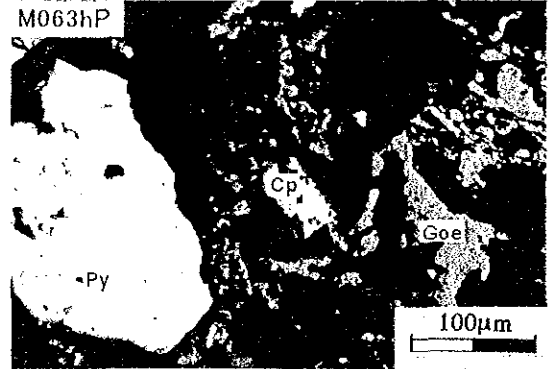
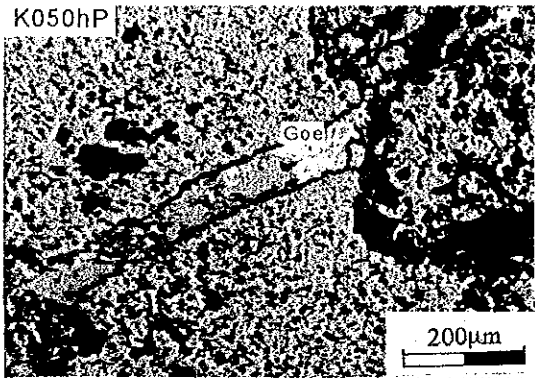
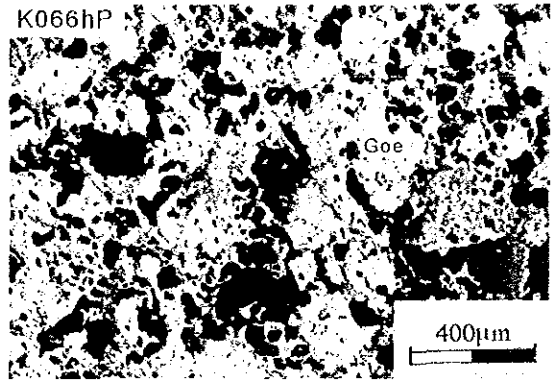
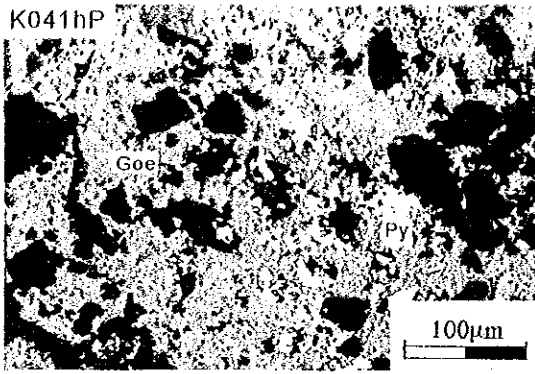


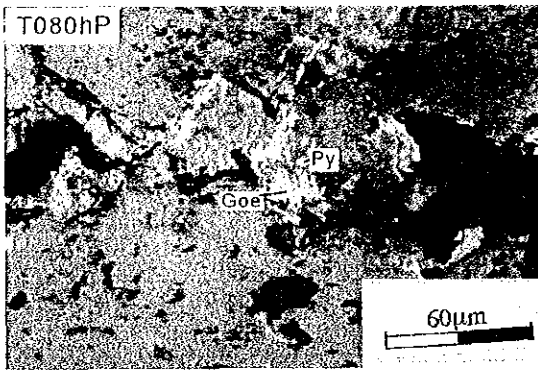
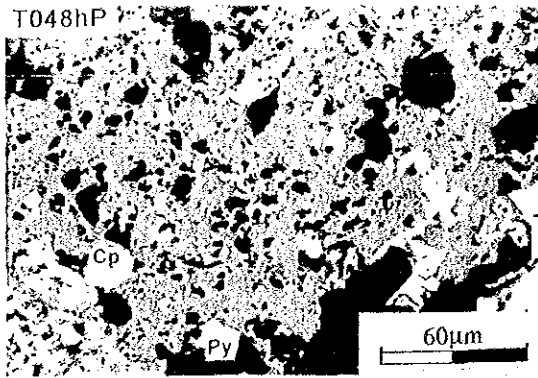












L. Resultados de Análisis de Difracción de Rayos X

略語一覽表
Abreviatura

ig	ignimbrite	ignimbrita	10cm-w	10cm wide	10cm de ancho
rhy	rhyolite	riolita	10cm-d	10cm deep	10cm de hondo
da	dacite	dacita	10cm-l	10cm long	10cm de largo
qp	quartz porphyry	porfido cuarcifero	10cm-h	10cm high	10cm de alto
gr	granite	granito	v	vein	veta
and	andesite	andesita	vll	veinlet	venilla
por	porphyry	porfirita	net	network	stockwork
dio	diorite	diorita	sk	skarn	eskarn
bsl	basalt	basalto	dis	dissemination	disseninacion
dol	dolerite	dolerita	imp	impregnation	impregnacion
gbr	gabbro	gabro	seg	segregation	segregacion
rhy-	rhyolitic	rioritica	silic	silicic	silicio
da-	dacitic	dacitica	whl	white	blanco
gr-	granitic	granitica	gry	gray	gris
and-	andesitic	andesitica	brn	brown	pardo
dio-	dioritic	intermedia	blk	black	negro
bsl-	basaltic	basaltica	yel	yellow	amarillo
tf	tuff	toba	grn	green	verde
lptf	lapilli tuff	toba lapilli	red	red	rojo
ibr	tuff breccia	brecha tobacea	blu	blue	azul
vbr	volcanic breccia	brecha volcanica	gry-	grayish	grisaceo
aglo	agglomerate	aglomerado	brn-	brownish	pardoso
cgl	conglomerate	conglomerado	yel-	yellowish	amarillento
ss	sandstone	arenisca	red-	reddish	rojizo
ms	mudstone	marga	grn-	greenish	verdoso
sh	shale	lutita	blu-	bluish	azulado
ss/ms	alternation of ss and ms	alternacion de arenisca y marga	p-	pale	palido
ls	limestone	caliza	lgt-	light	ligero
dis	dolostone	dolomita	drk-	dark	oscuro
snd-	sandy	arenoso	py	pyrite	pirita
mud-	muddy		gin	galena	galena
alt	altered	alteracion	sph	sphalerite	esfalerita
s-alt	strongly altered	alteracion fuerte	cpy	chalcopyrite	calcopirita
m-alt	moderately altered	alteracion media	qtz	quartz	cuarzo
w-alt	weakly altered	alteracion debil	Cu-ox	Cu oxide	oxido de cobre
arg	argillized	argilizacion	ep	epidote	epidota
s-arg	strongly argillized	argilizacion fuerte	kaol	kaolin	kaolinita
m-arg	moderately argillized	argilizacion media	mon	montmorillonite	montmorillonita
w-arg	weakly argillized	argilizacion debil	hem	hematite	hematita
sil	silicified	silicificacion	chl	chlorite	clorita
s-sil	strongly silicified	silioficacion fuerte	cc	calcite	calcita
m-sil	moderately silicified	silicificacion media	K-fel	K-feldspar	feldespato potasico
w-sil	weakly silicified	silicificacion debil	pl	plagioclase	plagioclasa
weath	weathered	intemperisada	px	pyroxene	piroxeno
s-weath	strongly weathered	intemperisada fuerte	ol	olivine	olivina
m-weath	moderately weathered	intemperisada media	limo	limonite	limonita
w-weath	weakly weathered	intemperisada debil	gnt	garnet	granate
vcsgr	very coarse grained	muy gruesa	bio	biotite	biotita
csgr	coarse grained	gruesa	hrn	hornblede	hornblenda
mdg	medium grained	media	mus	muscovite	muscovita
fng	fine grained	fin	-brg	-bearing	
vfngr	very fine grained	muy fina			

M. Resultados de Medición de Temperatura en Inclusiones Fluidas

M 流体包有物温度・塩濃度測定結果一覧表
M Resultados de Medición de Temperatura en Inclusiones Fluidas

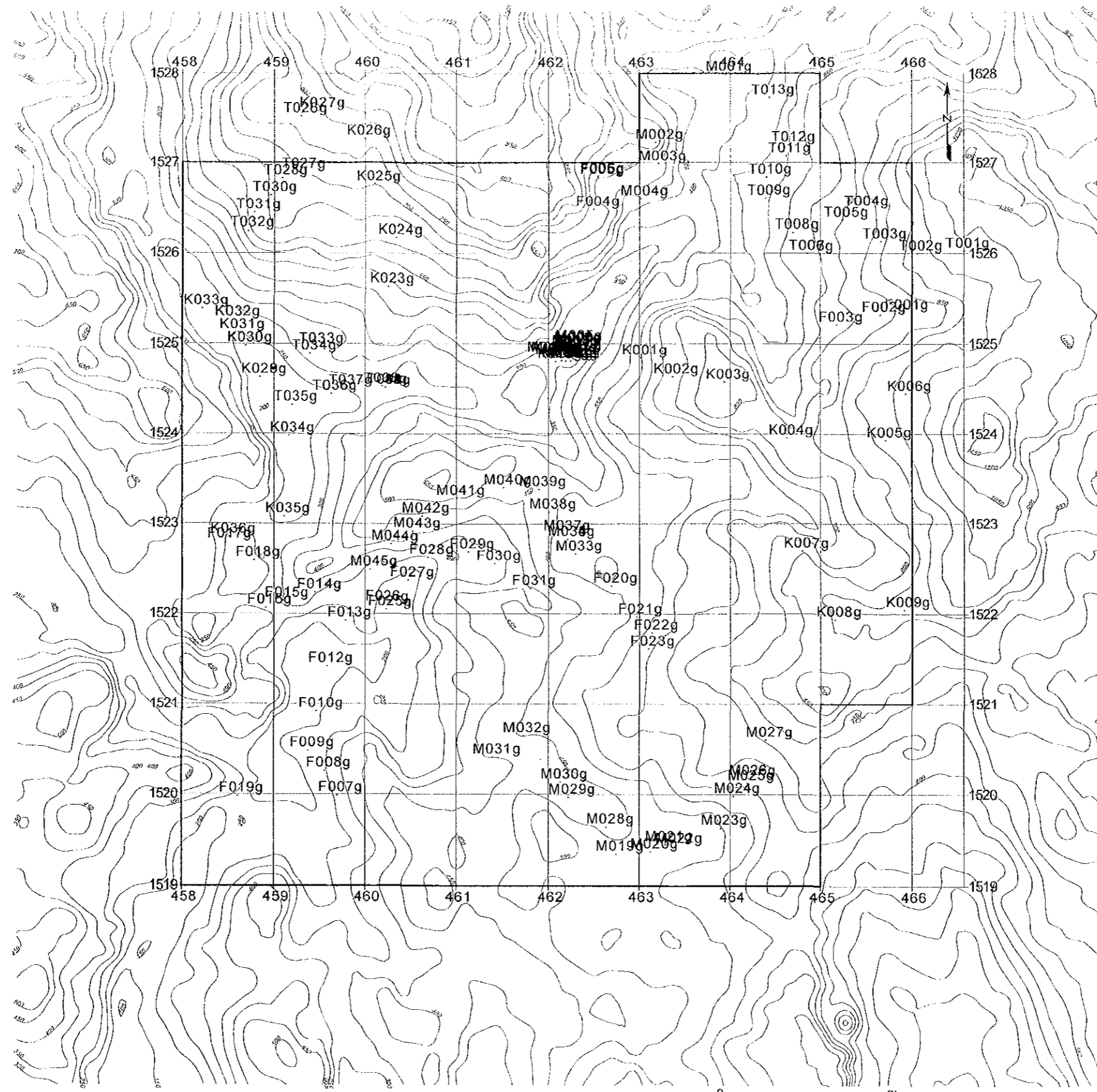
No.	試料番号 Numero de Muestra	測定鉱物 Mineral	流体包有物 Inclusiones Fluidas													
			測定項目 Artículo	平均 Medio	レンジ Rango	測定値 Valor de Medicion										
						1	2	3	4	5	6	7	8	9	10	11
1	F071PF	石英 Cuarzo	サイズ Tamano (μm)	5.0	4~6	4	5	5	4	6	5	6	5	5	5	
			充填度 Grado del llenado	0.7	0.5~0.8	0.8	0.8	0.7	0.7	0.6	0.5	0.6	0.6	0.7	0.7	
			均質化温度 Temperatura de Homogenizacion(°C)	247.3	165~312	165	186	218	253	269	312	295	275	256	244	
			塩濃度 Concentracion de Sales(wt%NaCl eq.)	4.5	3.6~5.3		3.6				5.3					
2	F083PF	石英 Cuarzo	サイズ Tamano (μm)	4.4	3~7	3	5	3	7	5	5	4	3	5		
			充填度 Grado del llenado	0.7	0.5~0.9	0.6	0.7	0.6	0.6	0.6	0.8	0.5	0.9	0.7		
			均質化温度 Temperatura de Homogenizacion(°C)	250.7	129~322	268	241	287	271	301	198	322	123	245		
			塩濃度 Concentracion de Sales(wt%NaCl eq.)	5.5	4.5~6.8		4.5		6.8	5.1						
3	K080PF	石英 Cuarzo	サイズ Tamano (μm)	4.3	3~5	3	4	5	4	5	5	4	4	5	4	
			充填度 Grado del llenado	0.7	0.6~0.8	0.7	0.7	0.8	0.6	0.8	0.7	0.7	0.8	0.8	0.6	0.7
			均質化温度 Temperatura de Homogenizacion(°C)	212.1	157~281	225	218	157	256	186	203	215	169	180	281	243
			塩濃度 Concentracion de Sales(wt%NaCl eq.)	3.6	3.2~4.2		3.5					4.2		3.2		
4	F135OF	石英 Cuarzo	サイズ Tamano (μm)	12.6	5~50	7	10	8	50	10	8	6	5	8	12	15
			充填度 Grado del llenado	0.7	0.6~0.8	0.8	0.8	0.8	0.8	0.6	0.7	0.8	0.6	0.7	0.7	0.6
			均質化温度 Temperatura de Homogenizacion(°C)	208.9	150~284	163	150	165	180	250	235	163	276	236	196	284
			塩濃度 Concentracion de Sales(wt%NaCl eq.)	5.9	4.7~6.8	6.2	5.4		6.8	6.2	6.3			4.7	4.8	6.8
5	M338cF	石英 Cuarzo	サイズ Tamano (μm)	18.9	10~32	10	13	13	15	25	20	20	15	25	32	20
			充填度 Grado del llenado	0.6	0.6~0.7	0.6	0.7	0.6	0.6	0.6	0.6	0.7	0.6	0.6	0.6	0.6
			均質化温度 Temperatura de Homogenizacion(°C)	278.8	229~315	262	236	281	275	295	315	229	296	306	274	298
			塩濃度 Concentracion de Sales(wt%NaCl eq.)	3.9	2.0~6.2	3.0	2.0		3.2	2.8	3.8	6.2	5.4	4.1	4.1	4.4
6	M339cF	石英 Cuarzo	サイズ Tamano (μm)	16.3	10~24	10	10	13	20	16	15	20	18	13	20	24
			充填度 Grado del llenado	0.7	0.6~0.9	0.7	0.7	0.9	0.6	0.6	0.6	0.6	0.7	0.6	0.6	0.7
			均質化温度 Temperatura de Homogenizacion(°C)	254.7	94~312	232	239	94	296	282	275	312	254	298	297	223
			塩濃度 Concentracion de Sales(wt%NaCl eq.)	3.6	2.0~5.1	3.5	3.9	2.0	2.5	3.5	2.8	3.2	3.3	4.7	5.1	4.8
7	M348cF	石英 Cuarzo	サイズ Tamano (μm)	20.4	12~30	12	15	20	15	18	24	25	30	25	20	20
			充填度 Grado del llenado	0.6	0.5~0.7	0.7	0.7	0.7	0.6	0.5	0.6	0.5	0.7	0.6	0.5	0.5
			均質化温度 Temperatura de Homogenizacion(°C)	300.8	237~346	237	258	261	313	346	321	346	268	298	325	338
			塩濃度 Concentracion de Sales(wt%NaCl eq.)	5.4	2.5~6.3	6.3	5.7	5.9	6.0	6.3	6.2	5.9	2.5	3.5	5.0	6.3
8	F325aF	石英 Cuarzo	サイズ Tamano (μm)	19.2	10~30	12	15	30	20	23	26	10	15	20	18	22
			充填度 Grado del llenado	0.6	0.6~0.9	0.7	0.6	0.6	0.6	0.7	0.6	0.6	0.6	0.8	0.6	0.7
			均質化温度 Temperatura de Homogenizacion(°C)	253.8	178~298	235	242	256	266	243	274	267	298	178	270	263
			塩濃度 Concentracion de Sales(wt%NaCl eq.)	4.9	2.5~5.9	5.7	5.7	5.4	5.9	5.4	4.5	5.4	2.8	2.5	5.3	5.0
9	K016gF	石英 Cuarzo	サイズ Tamano (μm)	9.4	5~15	10	12	5	5	10	9	12	15	8	10	7
			充填度 Grado del llenado	0.6	0.5~0.6	0.5	0.5	0.5	0.5	0.6	0.6	0.5	0.6	0.6	0.6	0.6
			均質化温度 Temperatura de Homogenizacion(°C)	329.8	264~382	382	361	380	371	302	296	355	320	264	310	287
			塩濃度 Concentracion de Sales(wt%NaCl eq.)	4.0	2.5~5.9	5.1	3.6	5.9	5.6	4.8	2.8	3.2	3.5	2.5	4.1	3.2
10	T080hF	石英 Cuarzo	サイズ Tamano (μm)	22.1	13~50	50	15	20	20	15	25	15	15	13	35	20
			充填度 Grado del llenado	0.8	0.7~0.9	0.9	0.8	0.8	0.8	0.8	0.8	0.8	0.8	0.8	0.7	0.7
			均質化温度 Temperatura de Homogenizacion(°C)	166.1	116~211	116	159	133	170	175	173	160	175	173	182	211
			塩濃度 Concentracion de Sales(wt%NaCl eq.)	3.9	2.0~5.1	2.0	5.1	3.5	4.5	4.5	4.4	4.4	3.2	2.8	4.1	4.8

N. Resultados de Datación Radiométrica

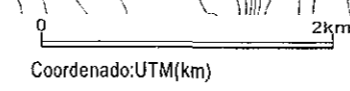
N 年代測定結果一覽表

N Resultados de Datación Radiométrica

Muestra	Medios	Edad
K139OK	Whole roca	15.5 ± 0.4
F252CK	Whole roca	11.8 ± 0.3
K212CK	Whole roca	6.8 ± 0.4
F283AK	Whole roca	10.3 ± 0.3
K270AK	Whole roca	11.0 ± 0.3

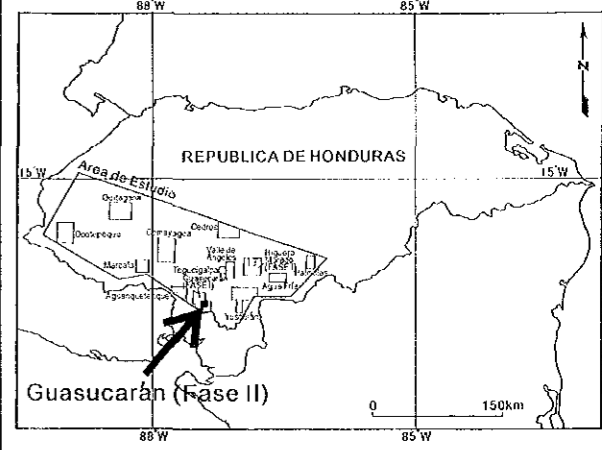


• Sampling point

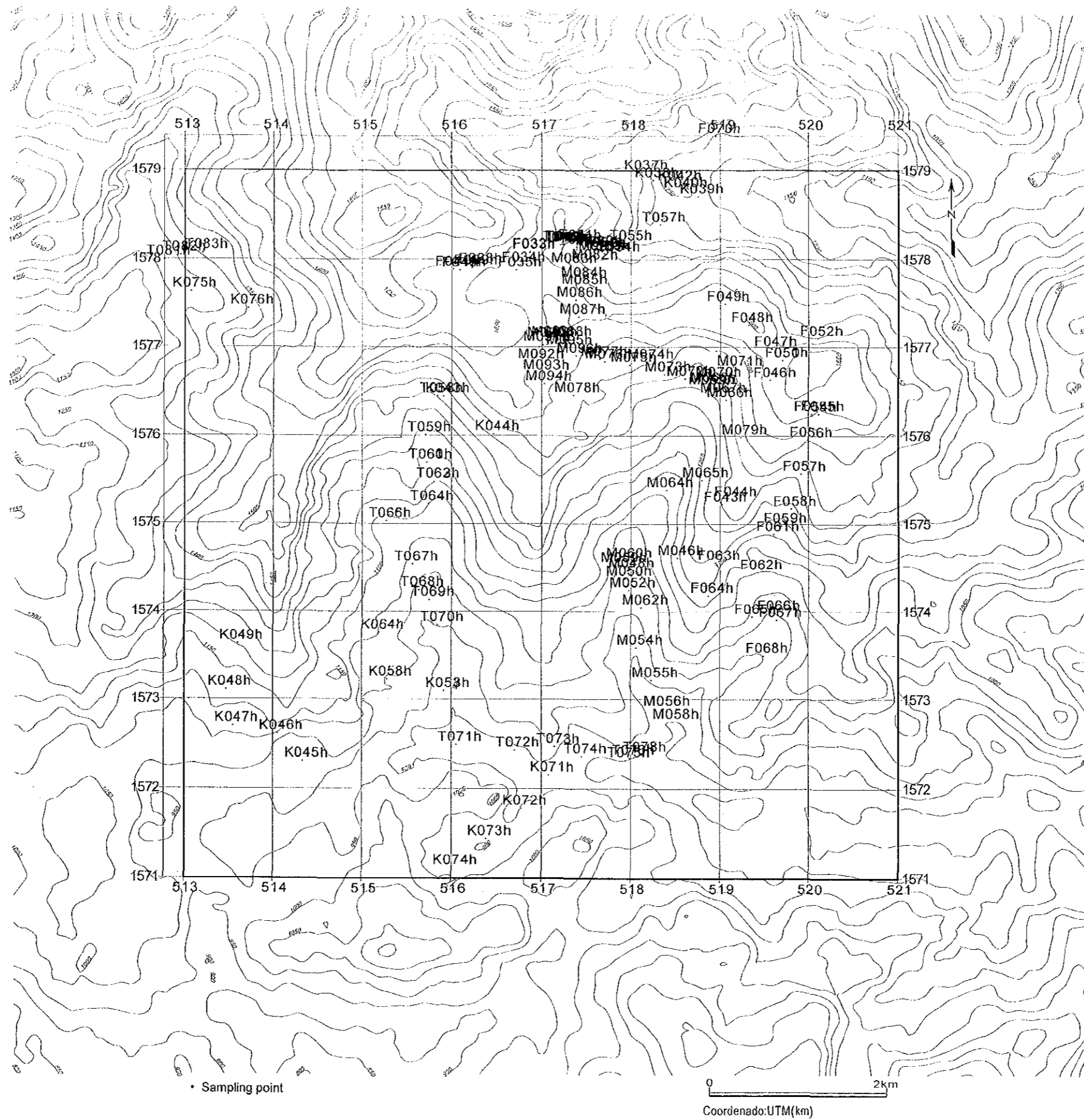


LA EXPLORACION MINERA EN
EL AREA SUROCCIDENTAL Y
CENTRAL DE
LA REPUBLICA DE HONDURAS

Guasucarán地区
岩石試料採取位置図
Puntos de Muestreo/Rocas
(Sector Guasucarán)

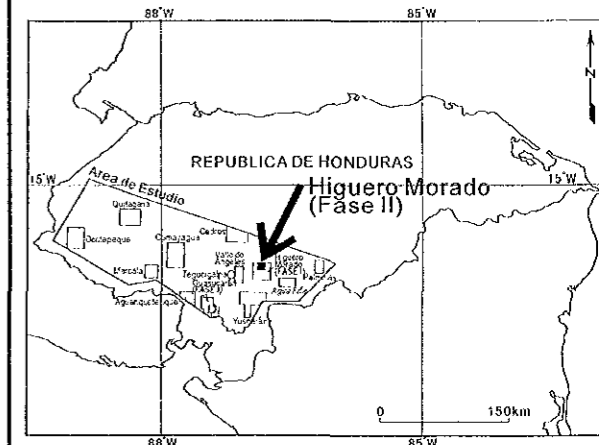


JAPAN INTERNATIONAL COOPERATION AGENCY
METAL MINING AGENCY OF JAPAN
ENERO 2002

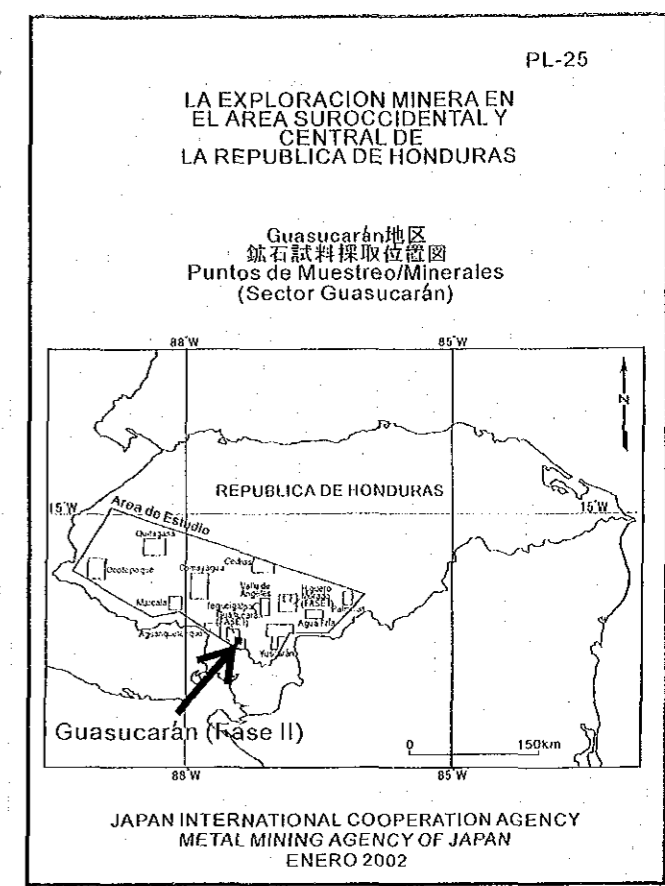
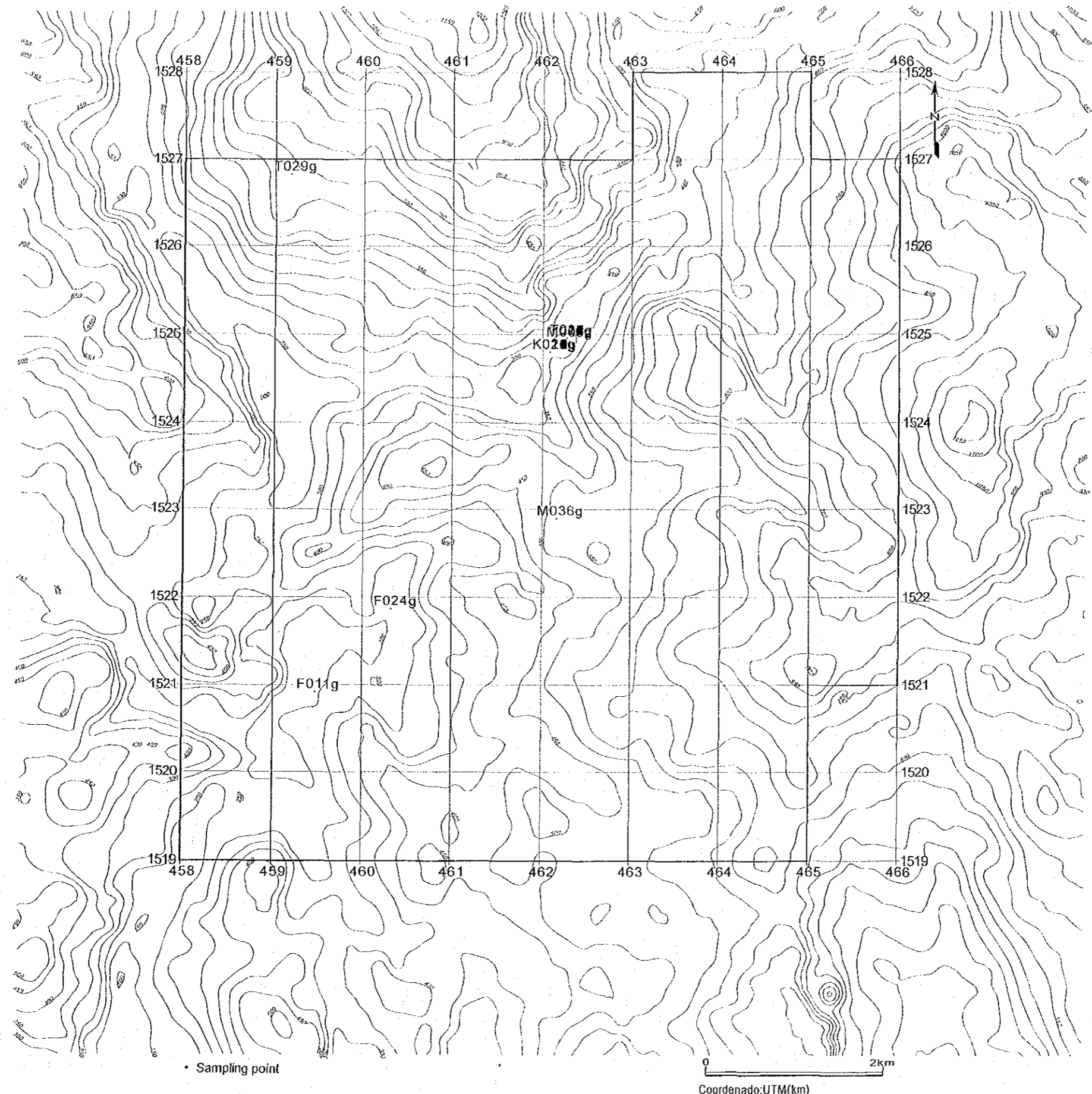


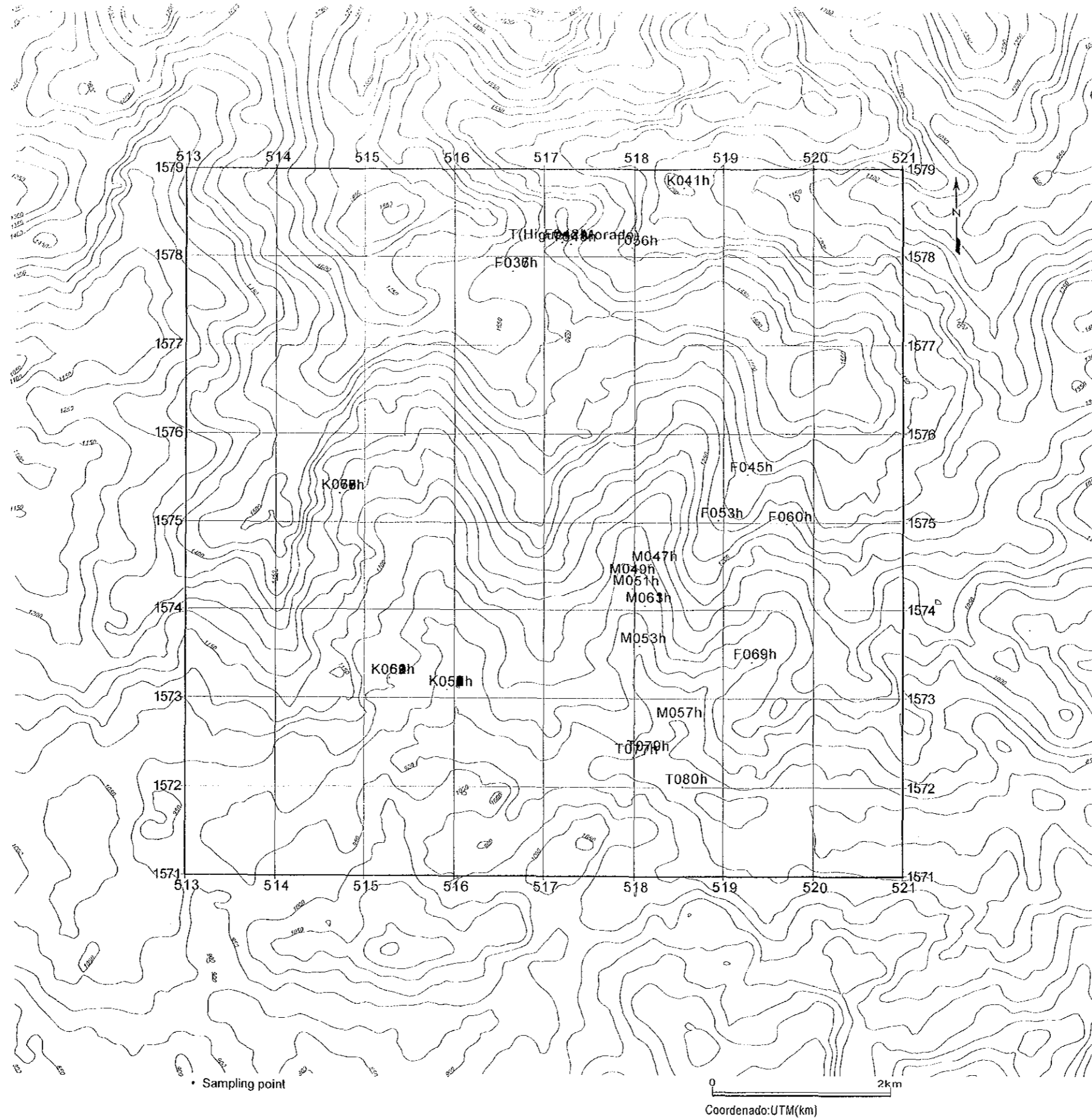
LA EXPLORACION MINERA EN
EL AREA SUROCCIDENTAL Y
CENTRAL DE
LA REPUBLICA DE HONDURAS

Higuero Morado地区
岩石試料採取位置図
Puntos de Muestreo/Rocas
(Sector Higuero Morado)



JAPAN INTERNATIONAL COOPERATION AGENCY
METAL MINING AGENCY OF JAPAN
ENERO 2002





PL-26

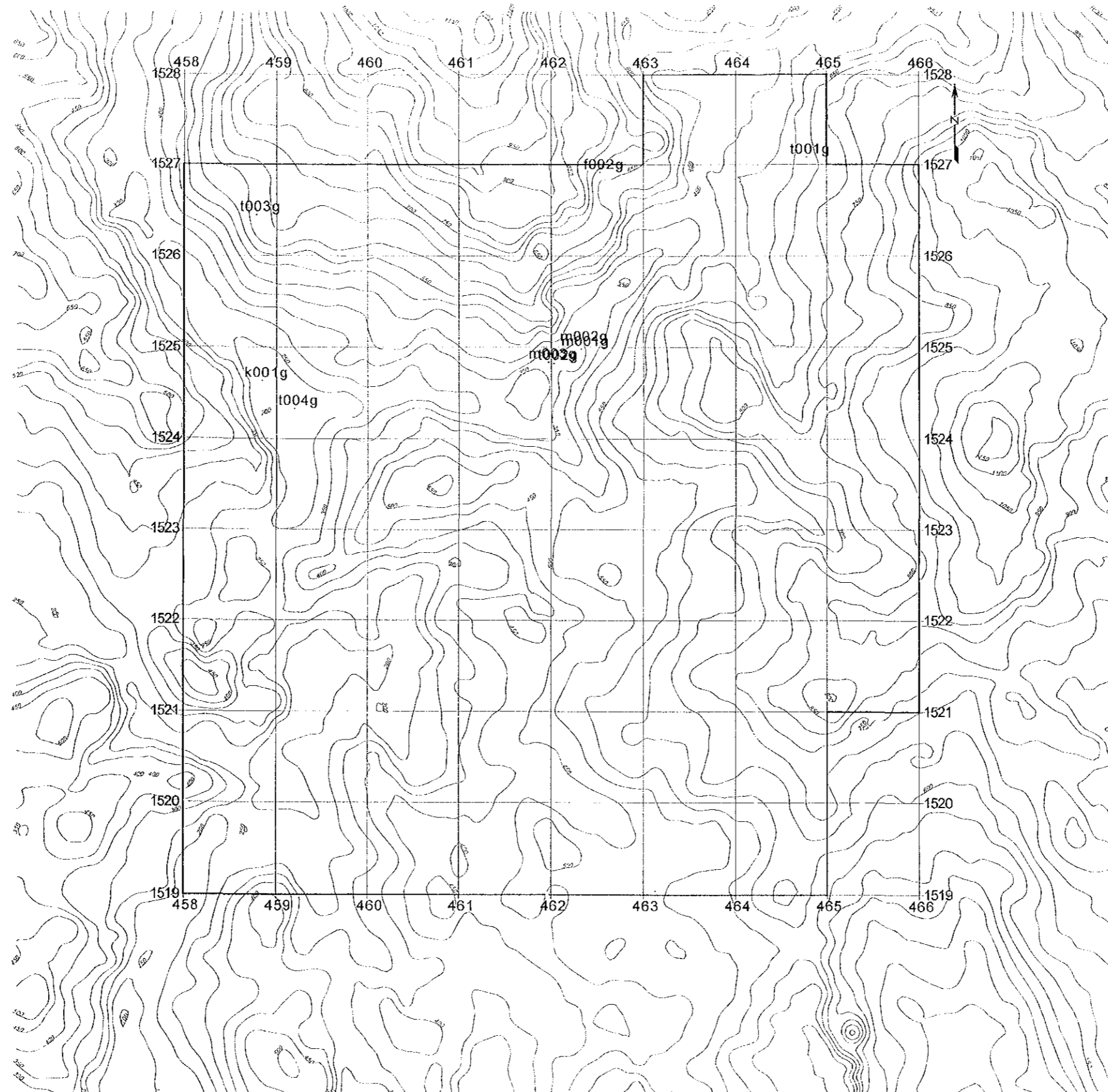
**LA EXPLORACION MINERA EN
EL AREA SUROCCIDENTAL Y
CENTRAL DE
LA REPUBLICA DE HONDURAS**

**Higuero Morado地区
鉱石試料採取位置図
Puntos de Muestreo/Minerales
(Sector Higuero Morado)**

REPUBLICA DE HONDURAS
Area de Estudio
Higuero Morado
(Fase II)

0 150km

JAPAN INTERNATIONAL COOPERATION AGENCY
METAL MINING AGENCY OF JAPAN
ENERO 2002



• Sampling point

0 2km
Coordenado:UTM(km)

PL-27

**LA EXPLORACION MINERA EN
EL AREA SUROCCIDENTAL Y
CENTRAL DE
LA REPUBLICA DE HONDURAS**

Guasucarán地区
川砂試料採取位置図
Puntos de Muestreo/Aiveos
(Sector Guasucarán)

REPUBLICA DE HONDURAS

Area de Estudio

Guasucarán (Fase II)

JAPAN INTERNATIONAL COOPERATION AGENCY
METAL MINING AGENCY OF JAPAN
ENERO 2002

