

*Investigation of Bridge on National Road no.15
(From Junction Road no.20 To Junction Road no.13)*

Item	Description	Distance (km.)	Acc. Dist. (km.)	Dimension of Bridge			Capacity (tons.)	Photo No.	Time	Remark
				Width (m.)	Length (m.)	Height (m.)				
1	Junction road no.15 and road no.20	0+000	0+000	-	-	-	-	1,2	13:33	
2	Bridge no.1	2+700	2+700	4.25	24.00	4.80	20	3,4	13:40	
3	Bridge no.2	2+600	5+300	3.90	12.00	3.40	20	5,6	13:50	
4	Bridge no.3	4+900	10+200	4.30	45.00	6.20	20	7,8	14:05	
5	Bridge no.4	2+200	12+400	3.90	12.00	3.80	20	9,10	14:11	
6	Bridge no.5	0+600	13+000	3.70	12.00	4.30	20	11,12	14:17	
7	Bridge no.6	2+400	15+400	4.20	33.00	5.10	20	13,14	14:28	
8	Bridge no.7	6+000	21+400	4.50	8.00	3.40	20	15,16	14:48	
9	Bridge no.8	1+900	23+300	3.90	9.80	2.10	20	17,18	14:55	
10	Bridge no.9	2+800	26+100	3.40	4.30	2.10	20	19,20	15:05	
11	Bridge no.10	4+100	30+200	3.80	54.00	7.00	20	21,22	15:15	
12	Bridge no.11	0+900	31+100	4.30	21.00	2.90	20	23	15:28	
13	Bridge no.12	3+000	34+100	4.00	9.00	2.40	20	24,25	15:35	
14	Bridge no.13	0+200	34+300	4.30	27.00	3.80	20	26,27	15:41	
15	Bridge no.14	9+200	43+500	-	-	-	-	28,29	16:00	Submerge Bridge
16	Bridge no.15	5+700	49+200	4.00	66.00	10.10	20	30,31	16:40	
17	Bridge no.16	5+000	54+200	4.00	54.00	10.10	20	32,33	16:54	
18	Bridge no.17	1+300	55+500	4.00	21.00	5.70	20	34,35	17:04	
19	Bridge no.18	2+800	58+300	4.00	12.00	2.90	20	36,37	17:10	
20	Bridge no.19	5+000	63+300	4.40	12.00	2.90	20	38,39	17:18	
21	Bridge no.20	0+400	63+700	3.90	66.00	8.80	20	40,41	17:23	
22	Junction with road no.13 (Ban Na Pong)	5+000	68+700	-	-	-	-	42,43	17:34	

General Condition of Bridge on Road no.15



Figure. 1 Junction Road no.15 and Road no.20
Sta 0+000



Figure. 2 General Condition of Road

General Condition of Bridge on Road no.15

Bridge no.1	Bridge Dimension :	Width	4.25	m.
Sta . 2+700		Length	24.00	m.
Type Bailey Bridge		High	4.80	m.



Figure. 3 General view of Bridge no.1



Figure. 4 General view of Bridge no.1

General Condition of Bridge on Road no.15

Bridge no.3	Bridge Dimension :	Width	4.30	m.
Sta . 10+200		Length	45.00	m.
Type Bailey Bridge		High	6.20	m.

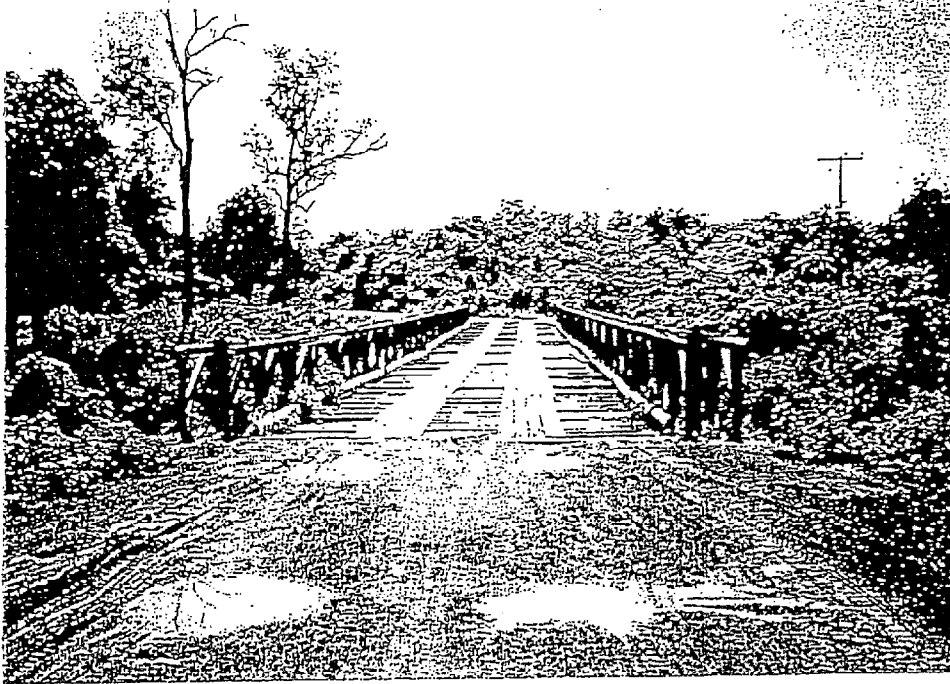


Figure. 7 General view of Bridge no.3

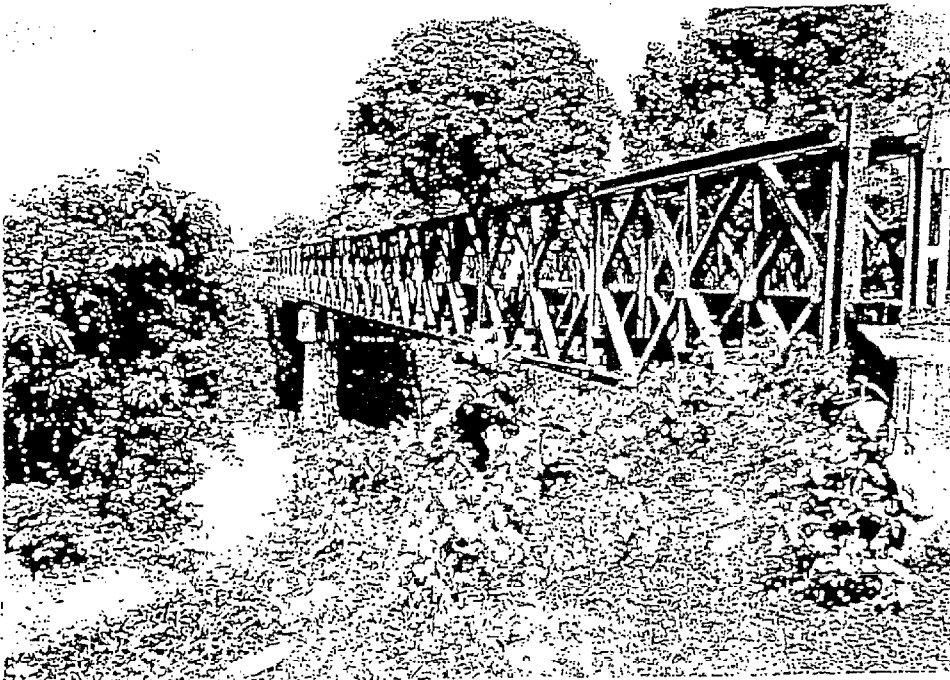


Figure. 8 General view of Bridge no.3

General Condition of Bridge on Road no.15

Bridge no.5	Bridge Dimension :	Width	3.70	m.
Sta. 13+000		Length	12.00	m.
Type Bailey Bridge		High	4.30	m.



Figure. 11 General view of Bridge no.5

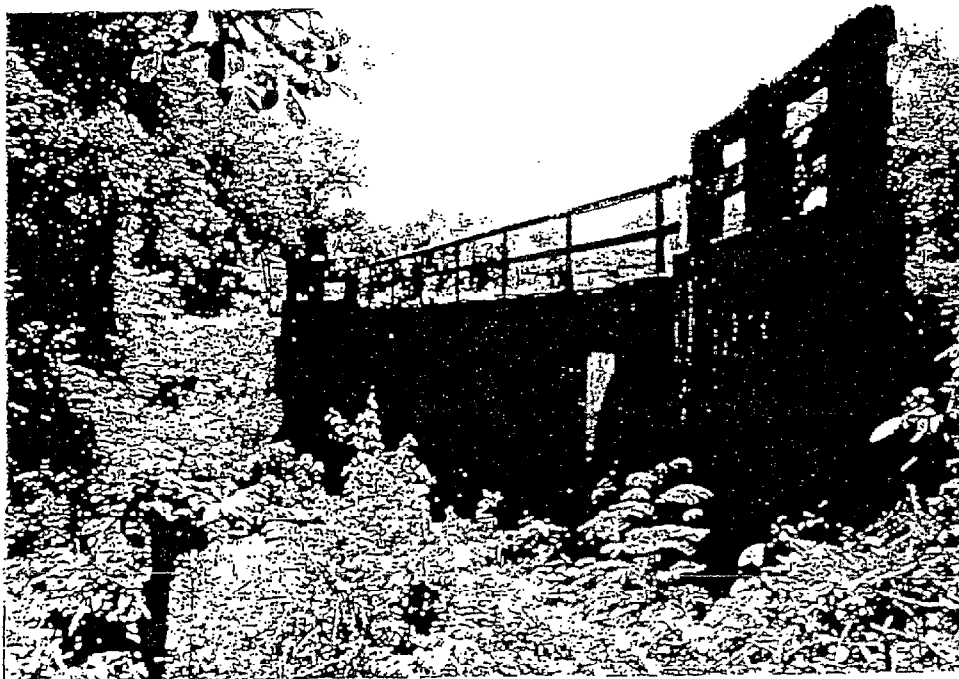


Figure. 12 General view of Bridge no.5

General Condition of Bridge on Road no.15

Bridge no.7	Bridge Dimension :	Width	4.50	m.
Sta . 21+400		Length	8.00	m.
Type Reinforce concrete Bridge.		High	3.40	m.



Figure. 15 General view of Bridge no.7

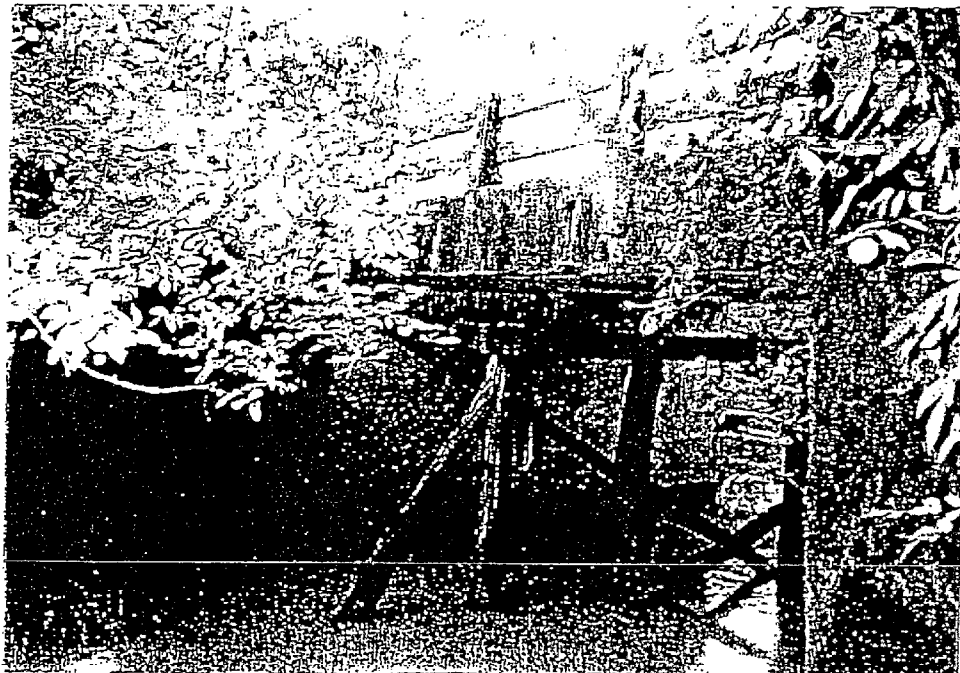


Figure. 16 General view of Bridge no.7

General Condition of Bridge on Road no.15

Bridge no.9	Bridge Dimension :	Width	3.40	m.
Sta . 26+100		Length	4.30	m.
Type Box Culvert Bridge.		High	2.10	m.

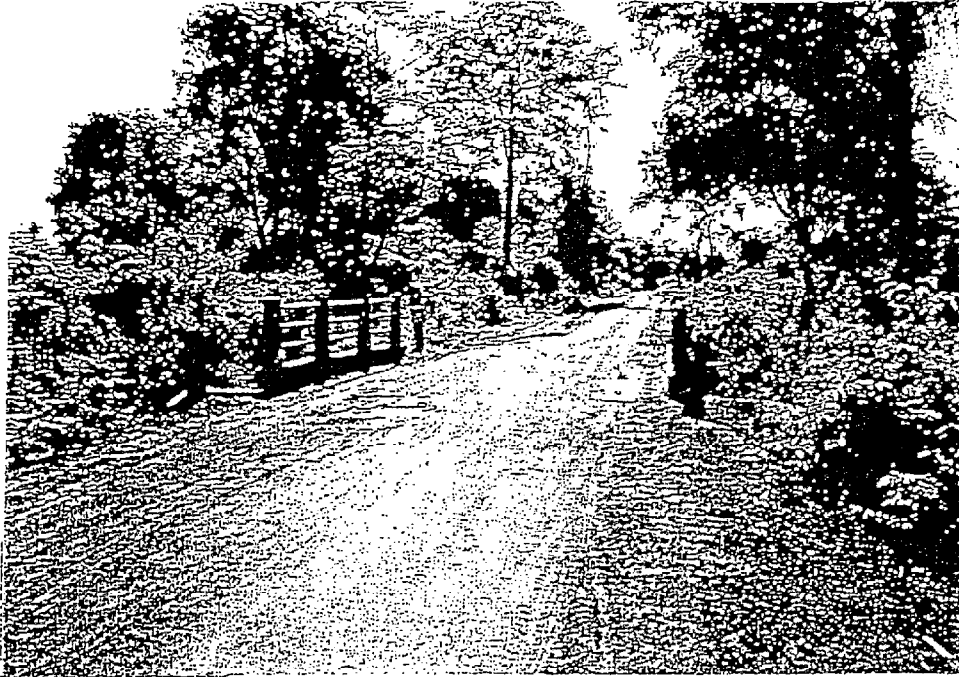


Figure. 19 General view of Bridge no.9



Figure. 20 General view of Bridge no.9

General Condition of Bridge on Road no.15

Bridge no.11	Bridge Dimension :	Width	4.30	m.
Sta . 31+100		Length	21.00	m.
Type Bailey Bridge.		High	2.90	m.



Figure. 23 General view of Bridge no. 11

General Condition of Bridge on Road no.15

Bridge no.13	Bridge Dimension :	Width	4.30	m.
Sta. 34+300		Length	27.00	m.
Type Bailey Bridge.		High	3.80	m.

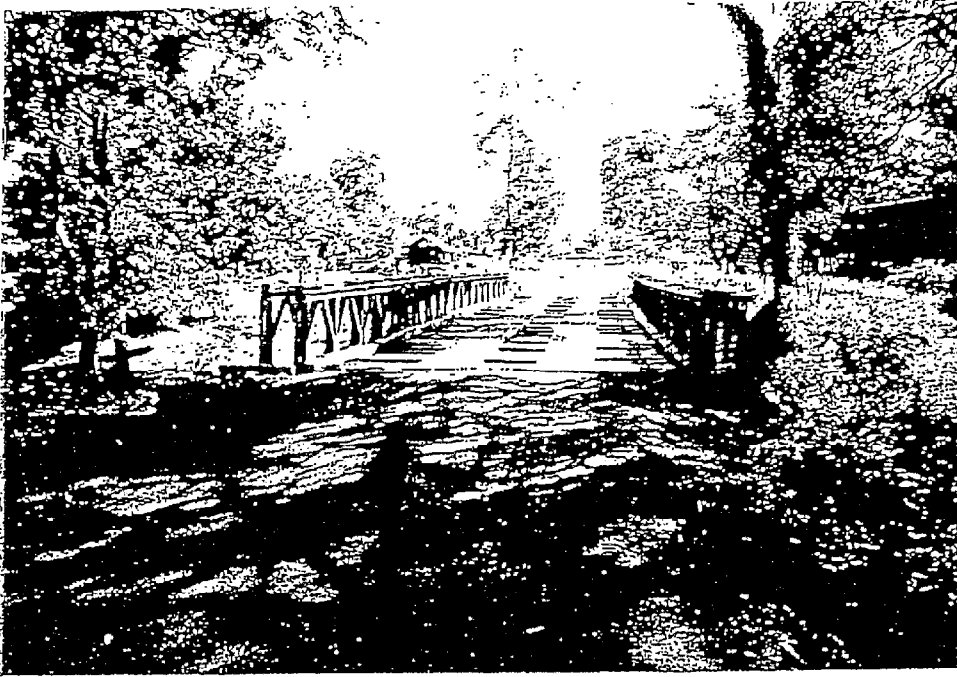


Figure. 26 General view of Bridge no.13



Figure. 27 General view of Bridge no.13

General Condition of Bridge on Road no.15

Bridge no.15	Bridge Dimension :	Width	4.00	m.
Sta . 49+200		Length	66.90	m.
Type Bailey Bridge.		High	10.10	m.



Figure. 30 General view of Bridge no.15



Figure. 31 General view of Bridge no.15

General Condition of Bridge on Road no.15

Bridge no.17	Bridge Dimension :	Width	4.00	m.
Sta . 55+500		Length	21.00	m.
Type Bailey Bridge.		High	5.70	m.

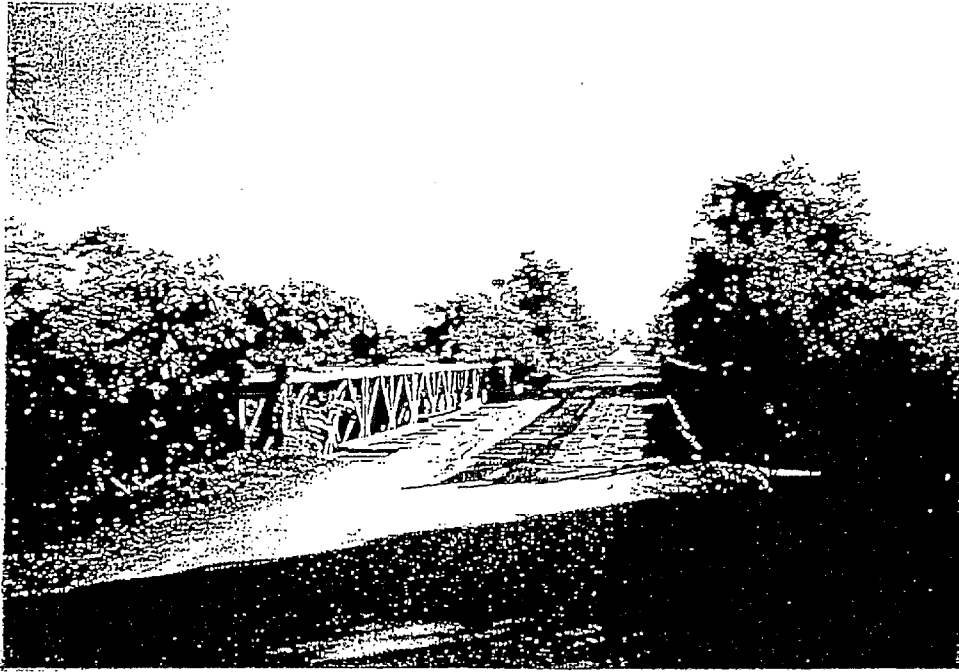


Figure. 34 General view of Bridge no.17



Figure. 35 General view of Bridge no.17

General Condition of Bridge on Road no.15

Bridge no.19	Bridge Dimension :	Width	4.40	m.
Sta . 63+300		Length	12.00	m.
Type Reinforce concrete Bridge.		High	2.90	m.



Figure. 38 General view of Bridge no.19

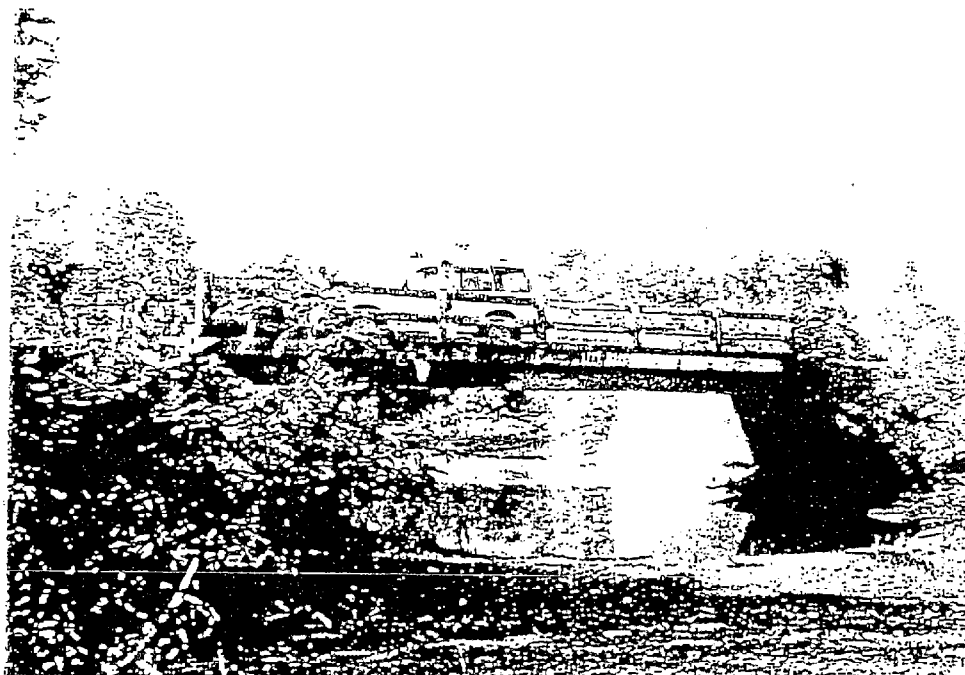


Figure. 39 General view of Bridge no.19