

Fig. II -2-23(1) TDIP plane maps for N=1 and 2 in Quron Al-Akhabab area



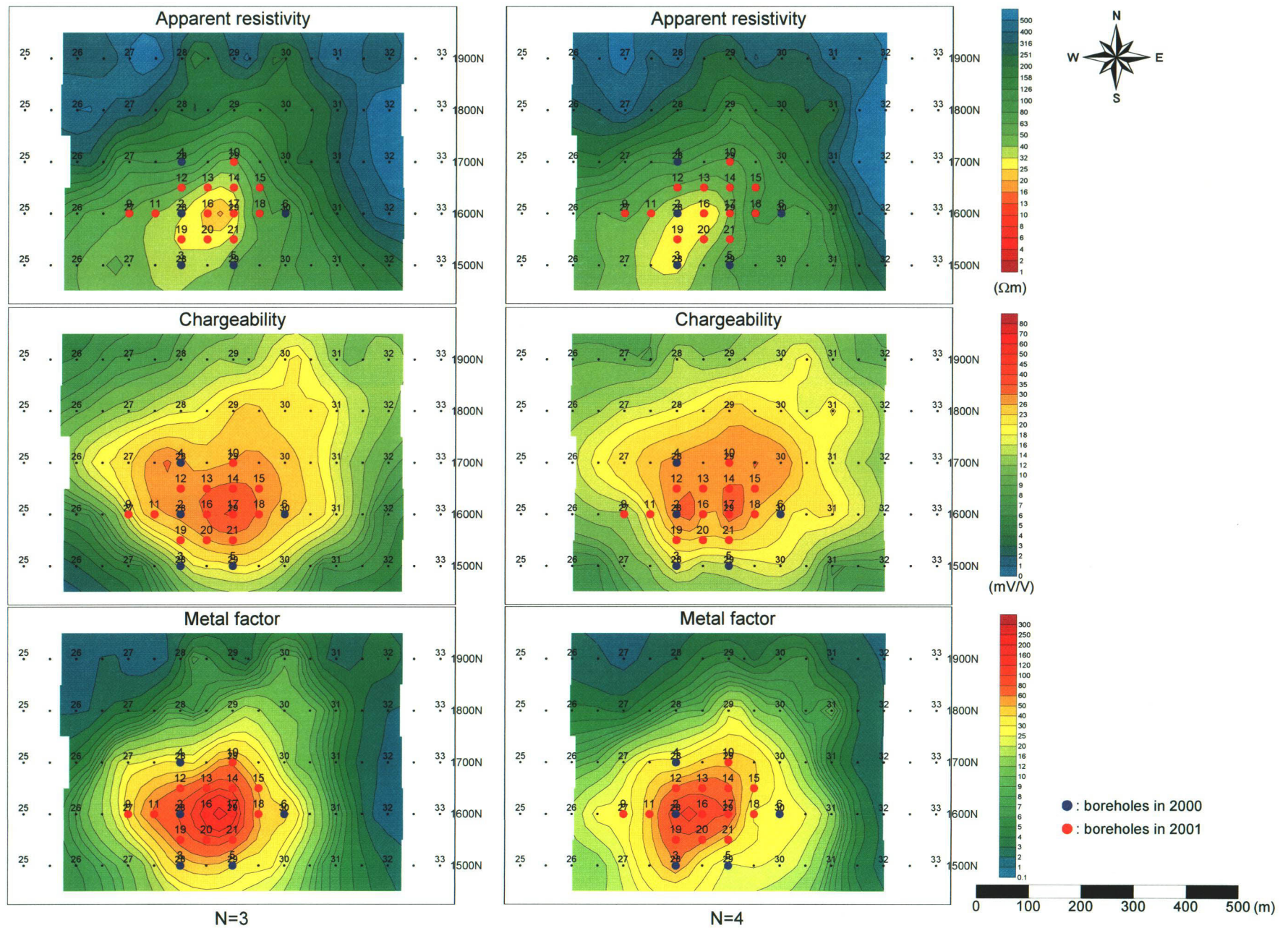


Fig. II -2-23(2) TDIP plane maps for N=3 and 4 in Quron Al-Akhabab area

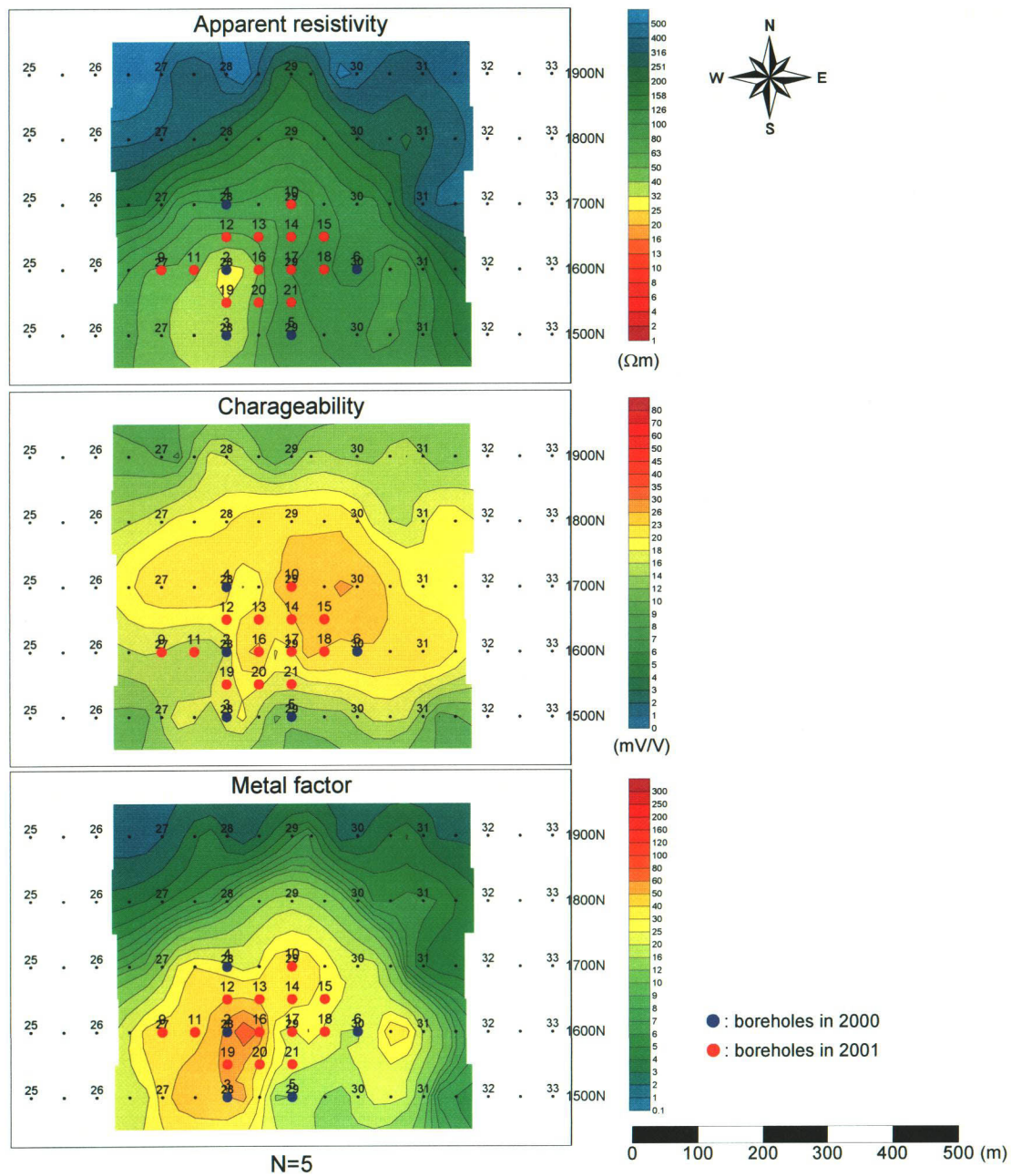


Fig. II -2-23(3) TDIP plane maps for N=5 in Quron Al-Akhabab area



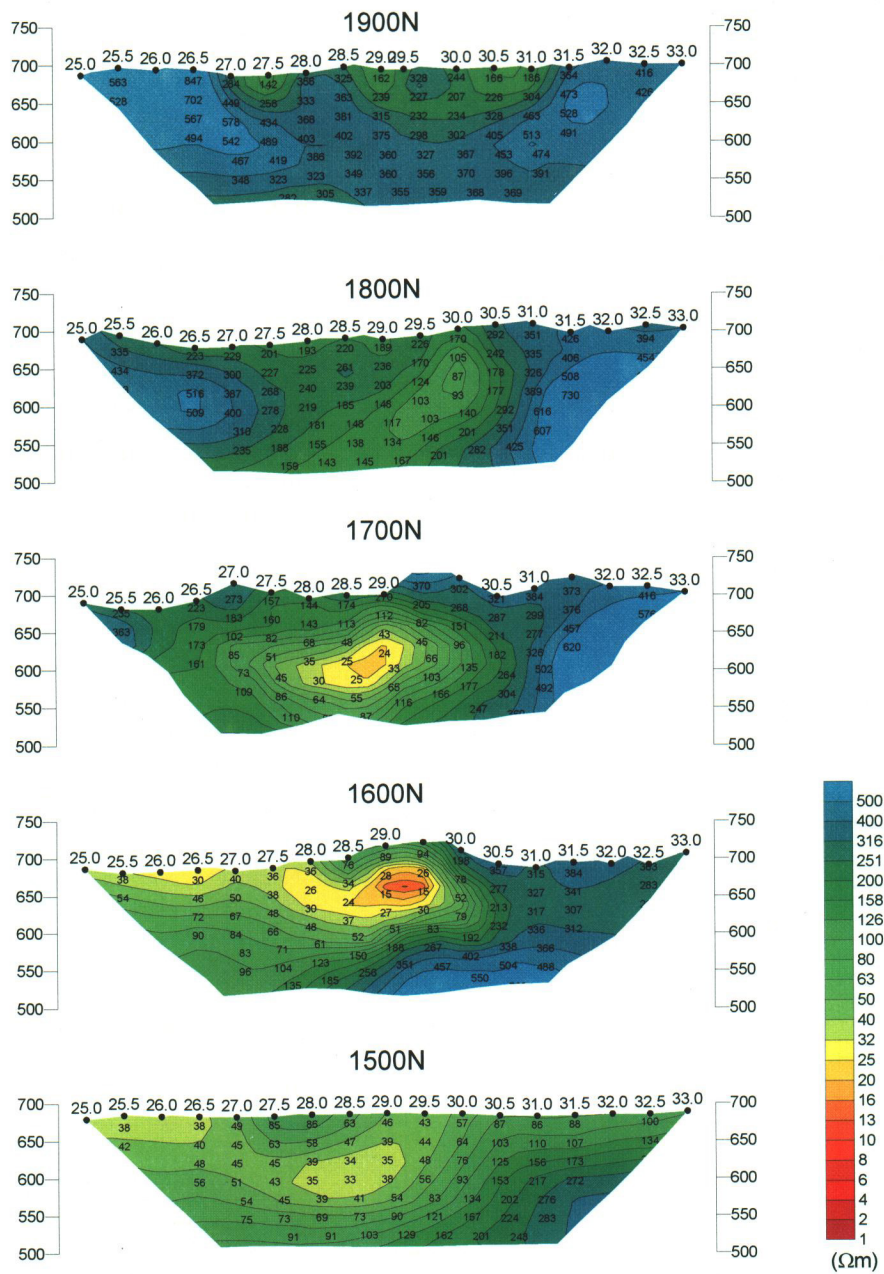


Fig. II -2-24(1) 2D analysis sections for resistivity of E-W lines in Quron Al-Akhabab area

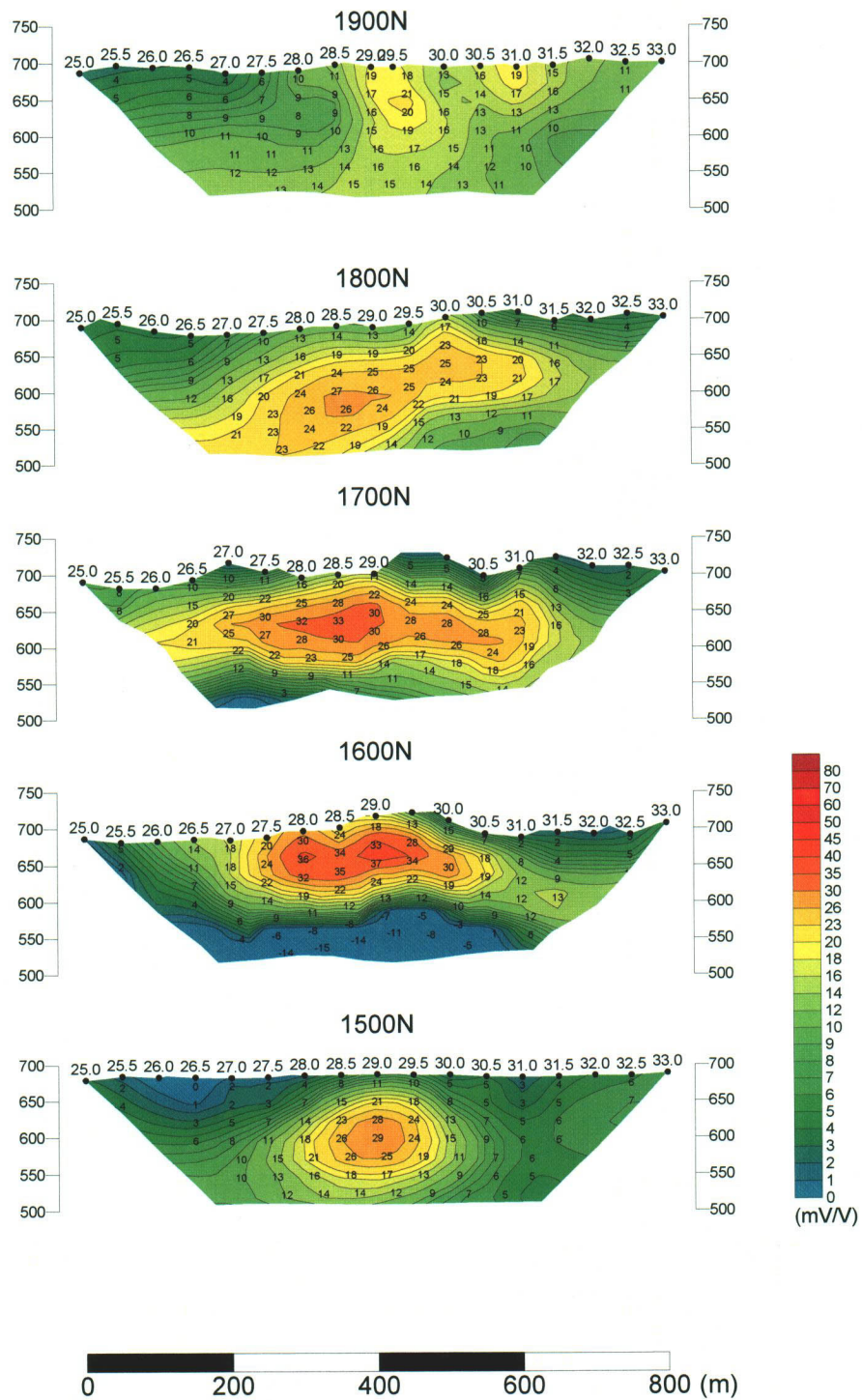


Fig. II -2-24(2) 2D analysis sections for chargeability of E-W lines in Quron Al-Akhabab area

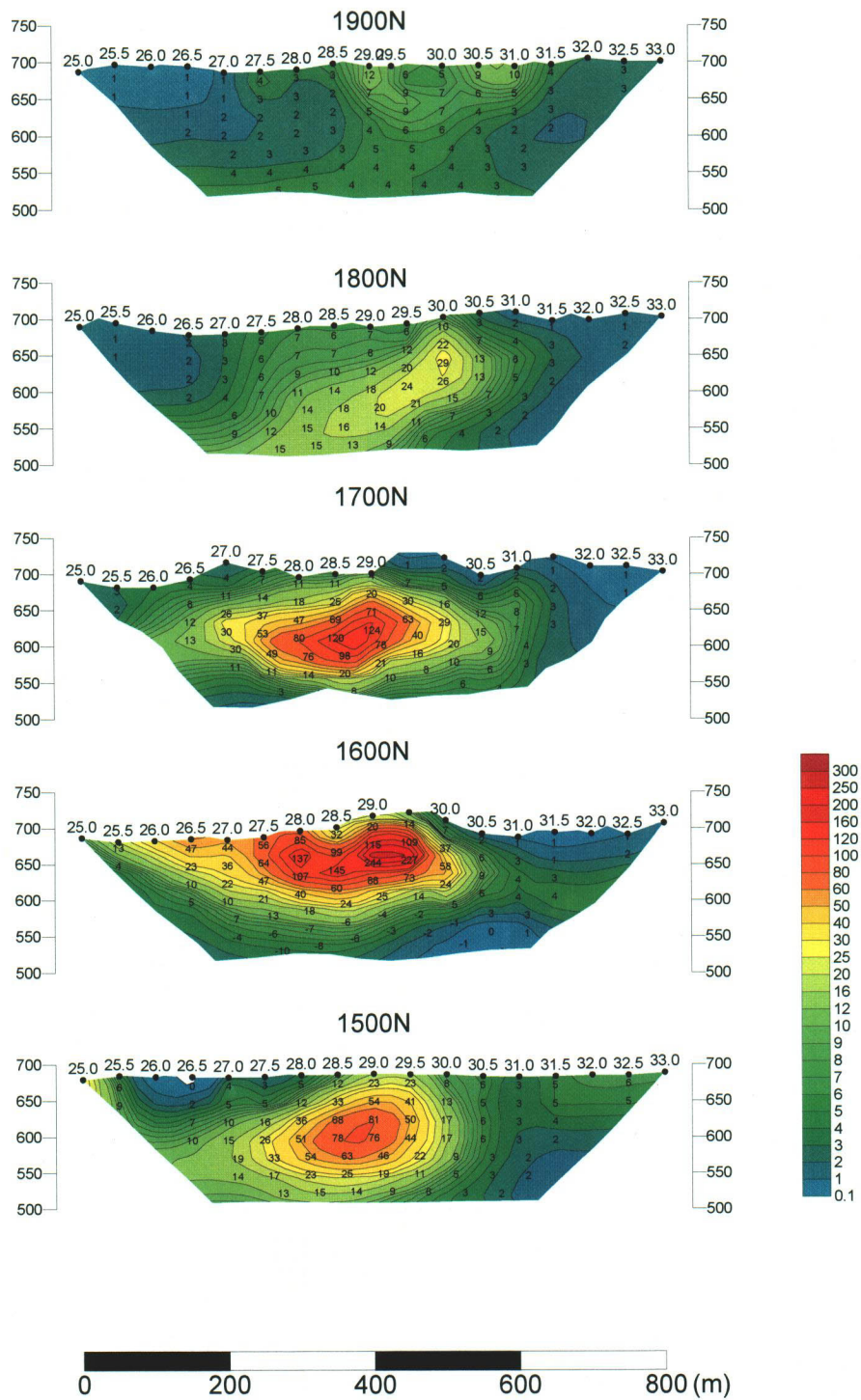


Fig. II-2-24(3) 2D analysis sections for metal factor of E-W lines in Quron Al-Akhabab area



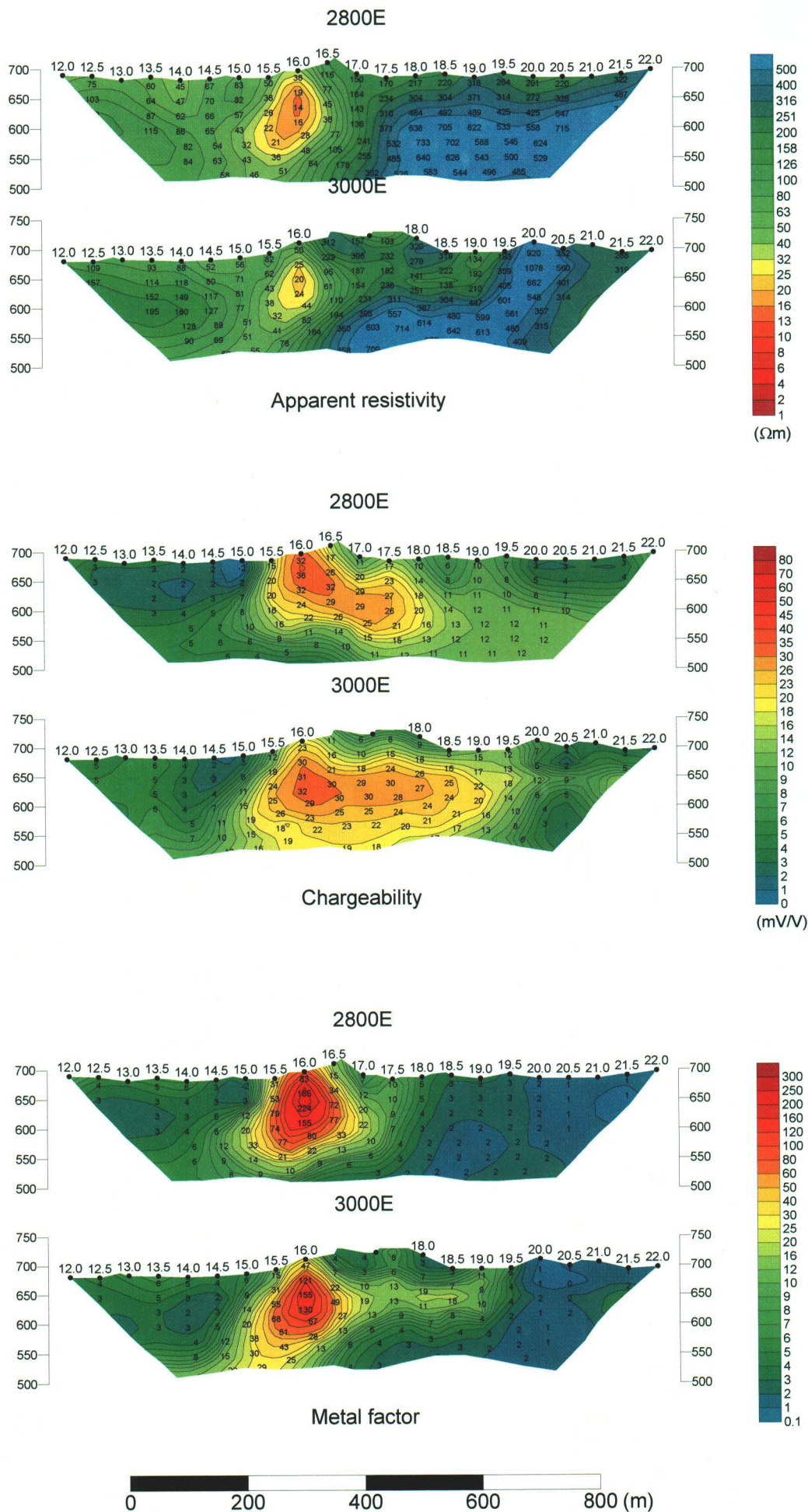


Fig. II-2-24(4) 2D analysis sections of N-S lines in Quron Al-Akhabab area



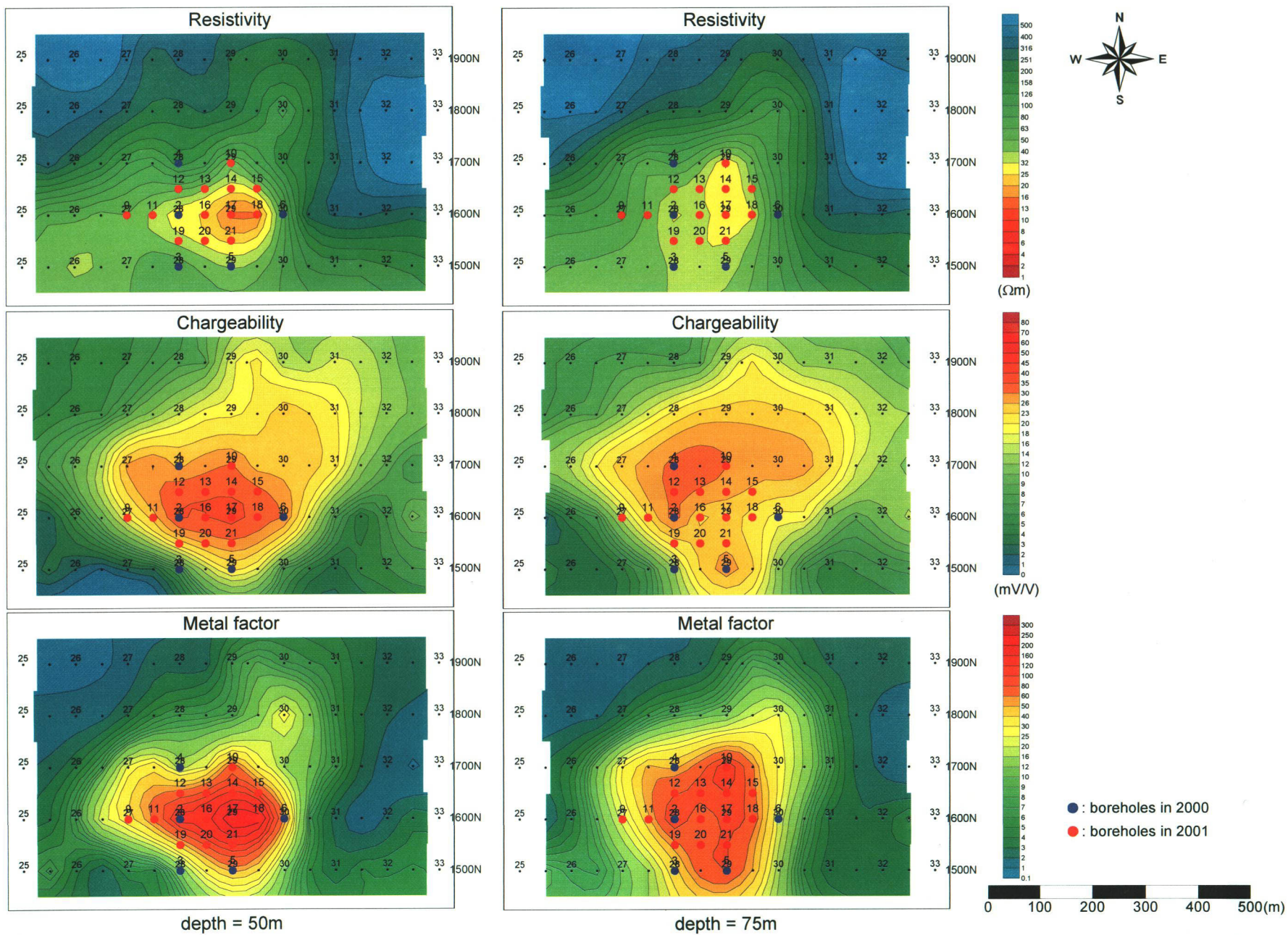


Fig. II-2-25(1) 2D analysis plane maps at the depth of 50m and 75m in Quron Al-Akhabab area



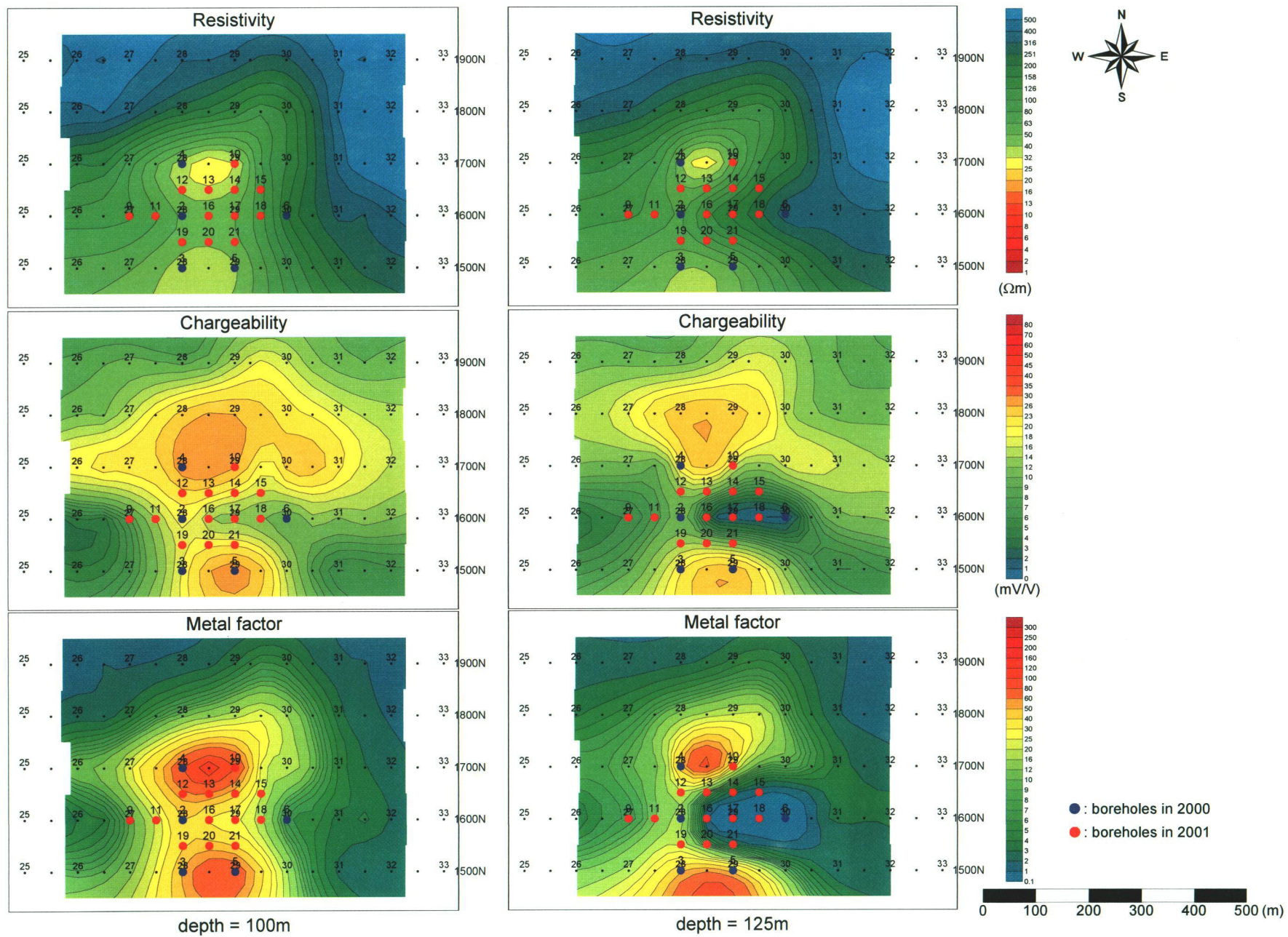


Fig. II-2-25(2) 2D analysis plane maps at the depth of 100m and 125m in Quron Al-Akhabab area

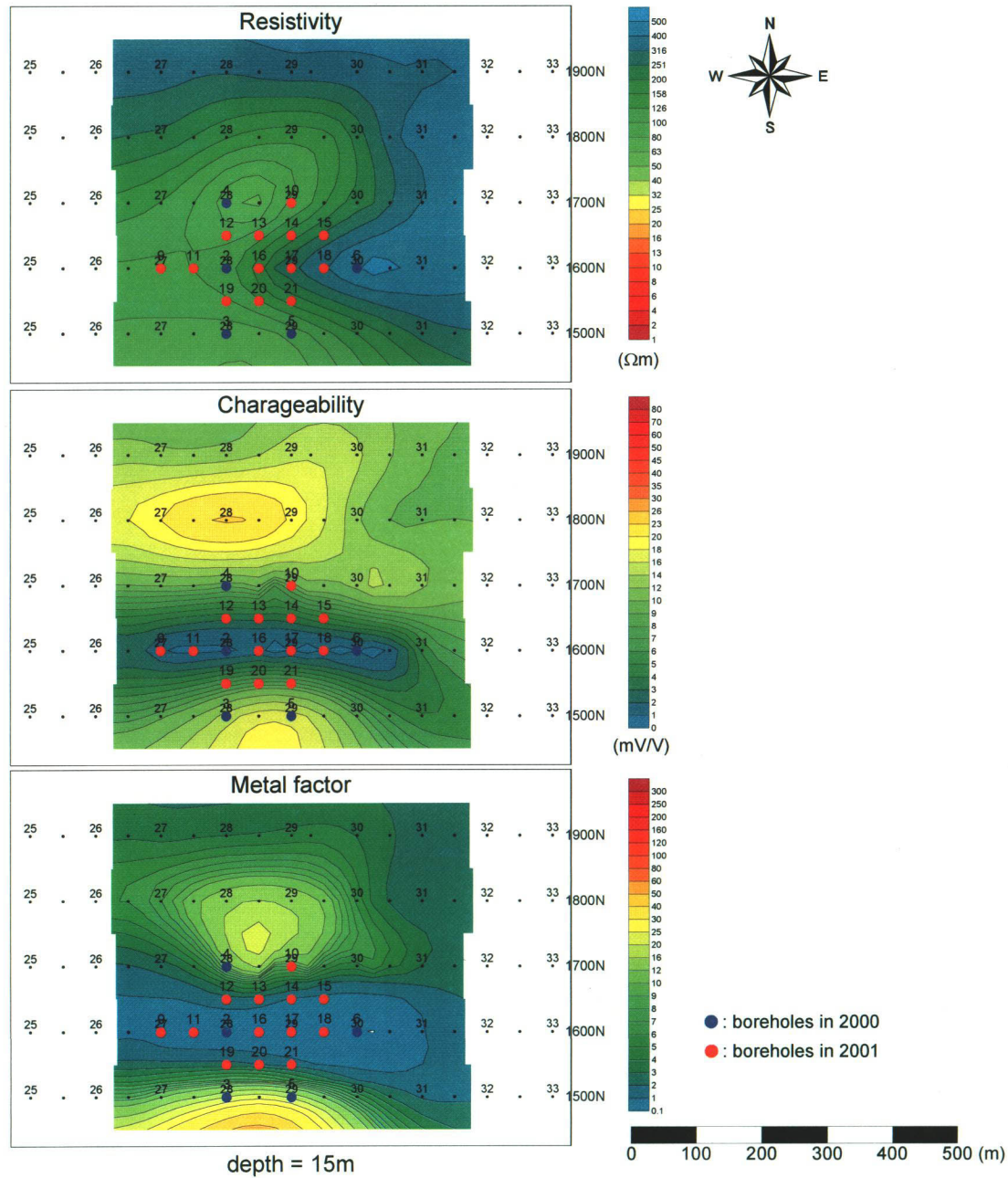


Fig. II-2-25(3) 2D analysis plane maps at the depth of 150m in Quron Al-Akhabab area