

Fig. II -2-35(1) 2D analysis plane maps at the depth of 50m in Hayl as Safil area

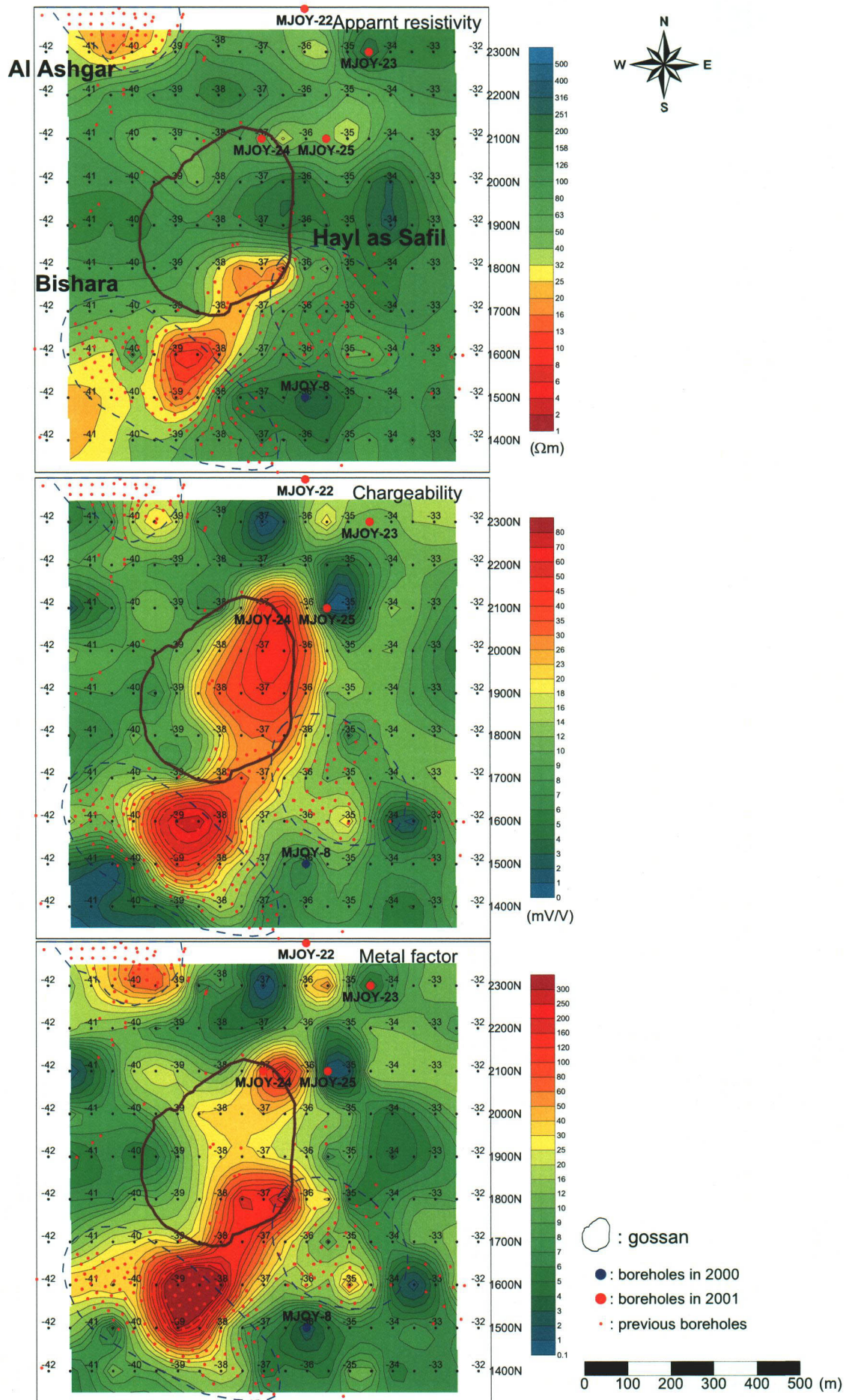


Fig. II -2-35(2) 2D analysis plane maps at the depth of 75m in Hayl as Safil area

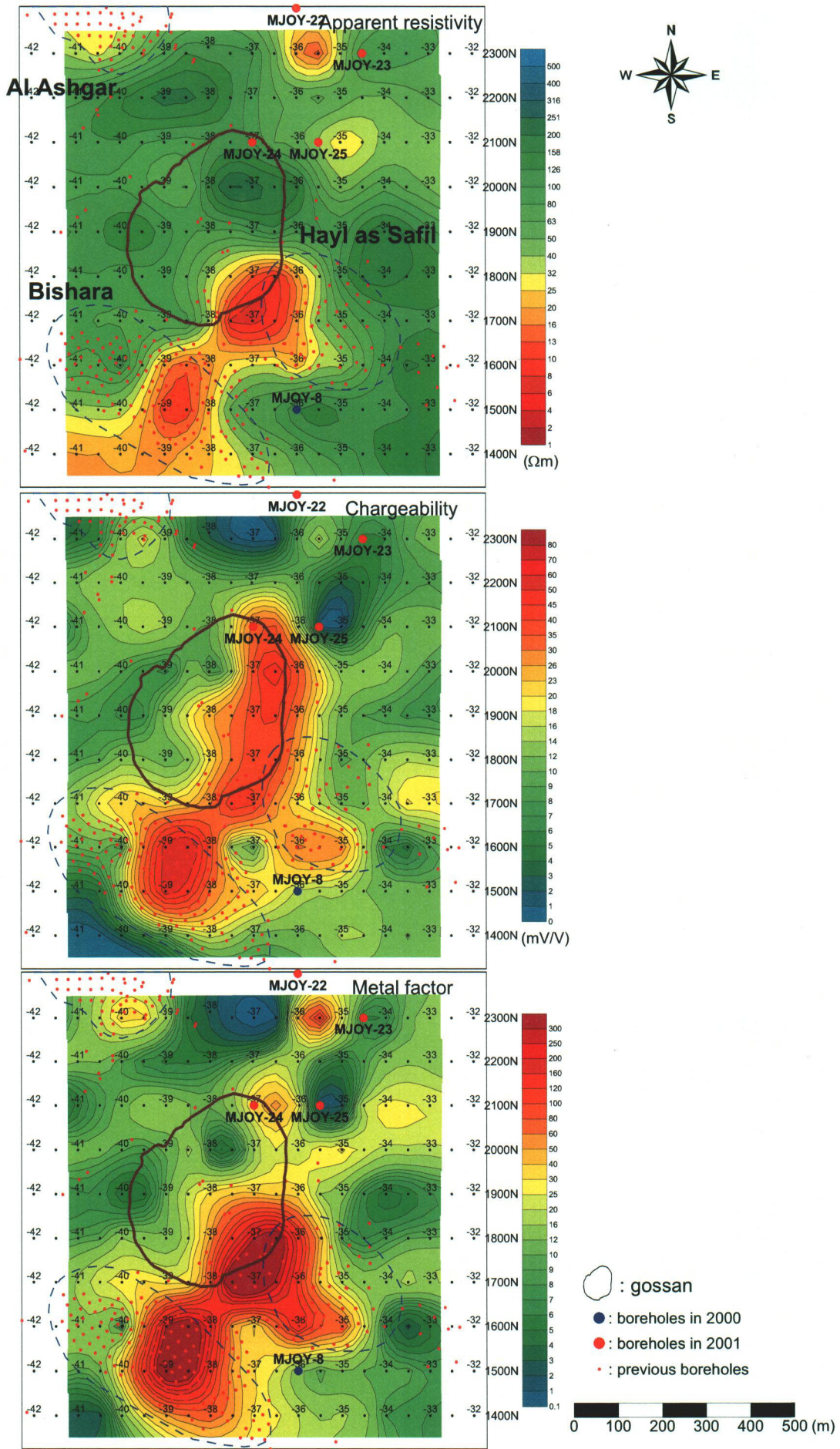


Fig. II -2-35(3) 2D analysis plane maps at the depth of 100m in Hayl as Safil area

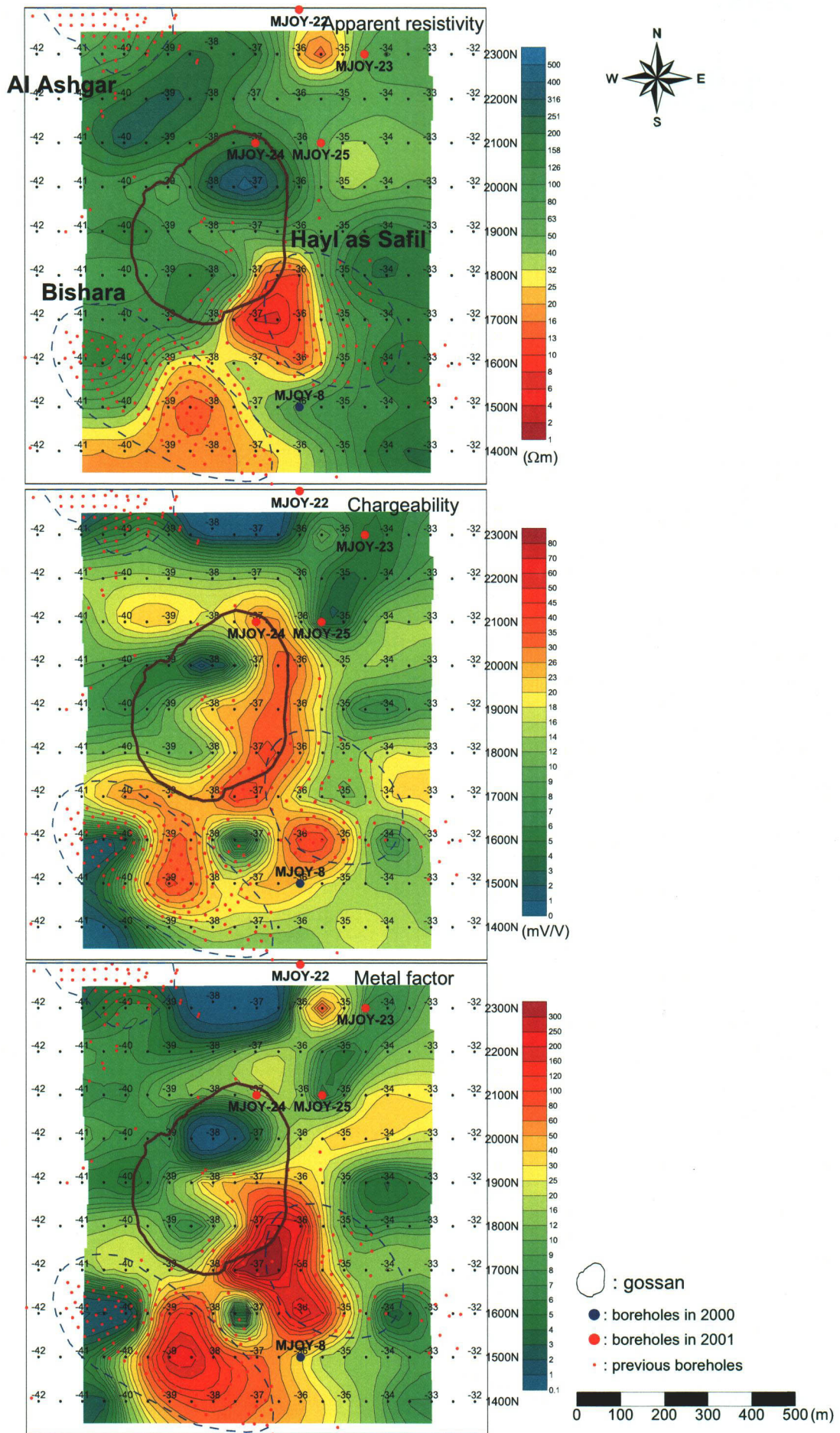


Fig. II -2-35(4) 2D analysis plane maps at the depth of 125m in Hayl as Safil area

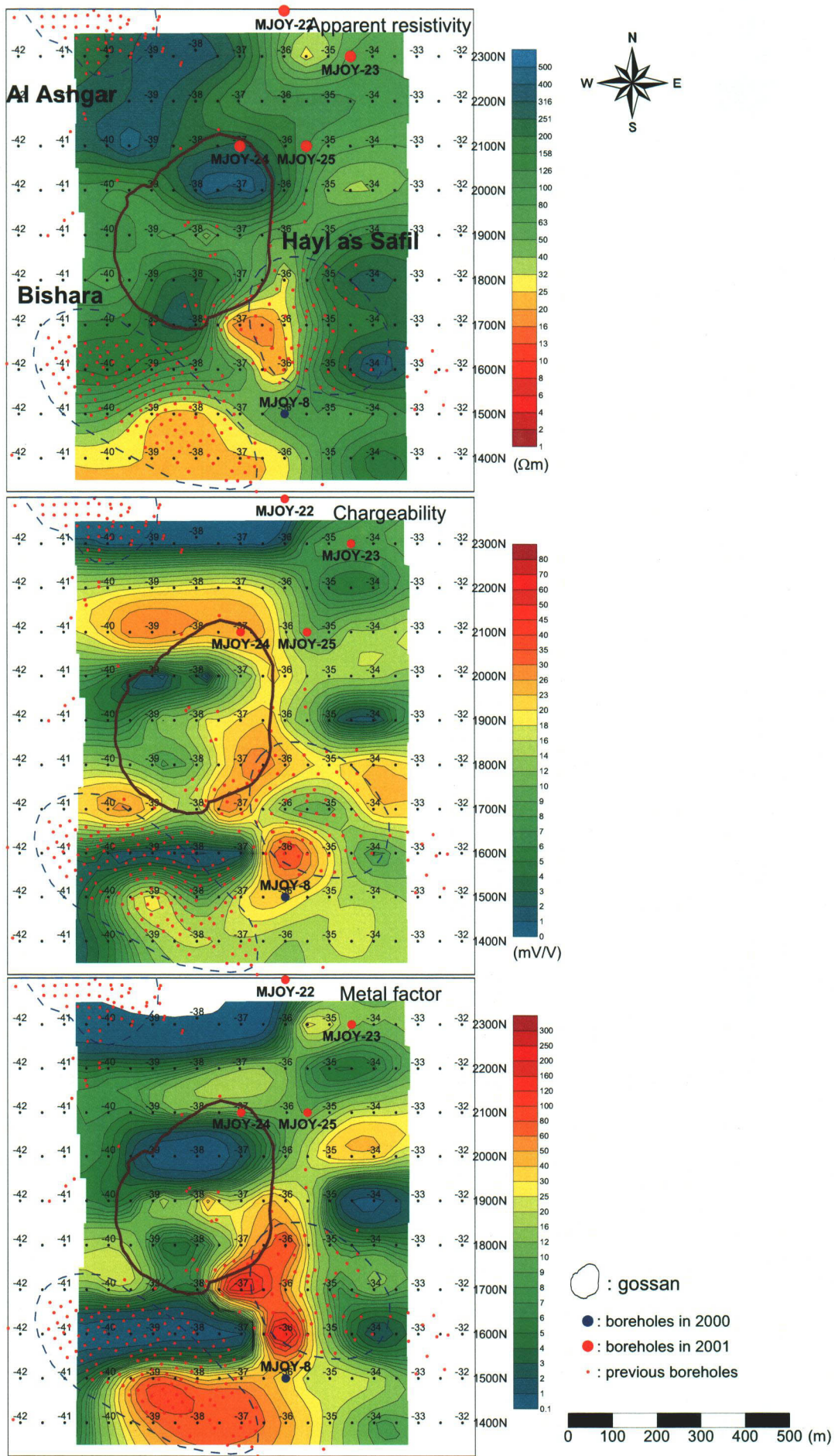


Fig. II-2-35(5) 2D analysis plane maps at the depth of 150m in Hayl as Safil area

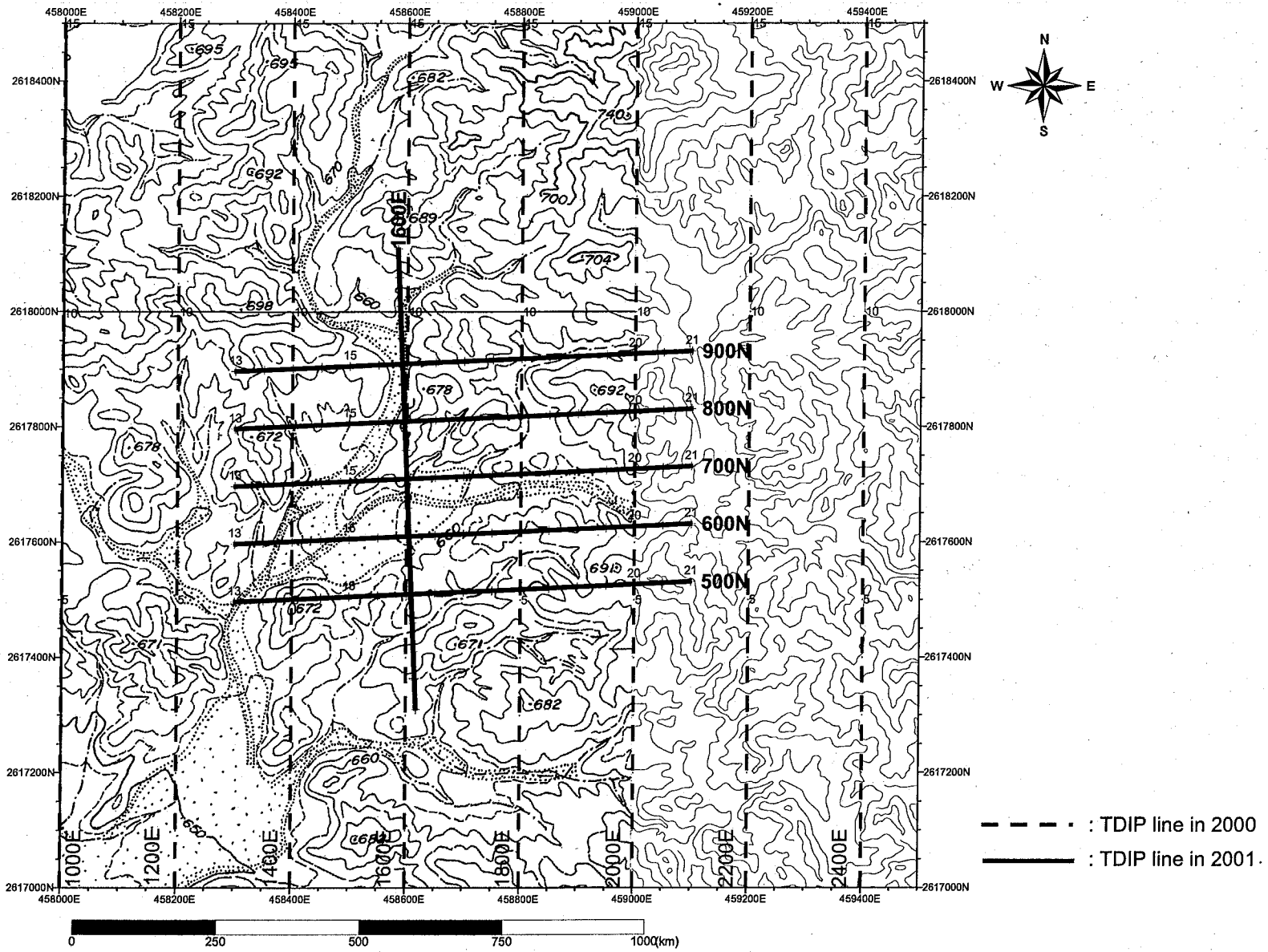


Fig. II -2-36 Geophysical survey location in Najaid area

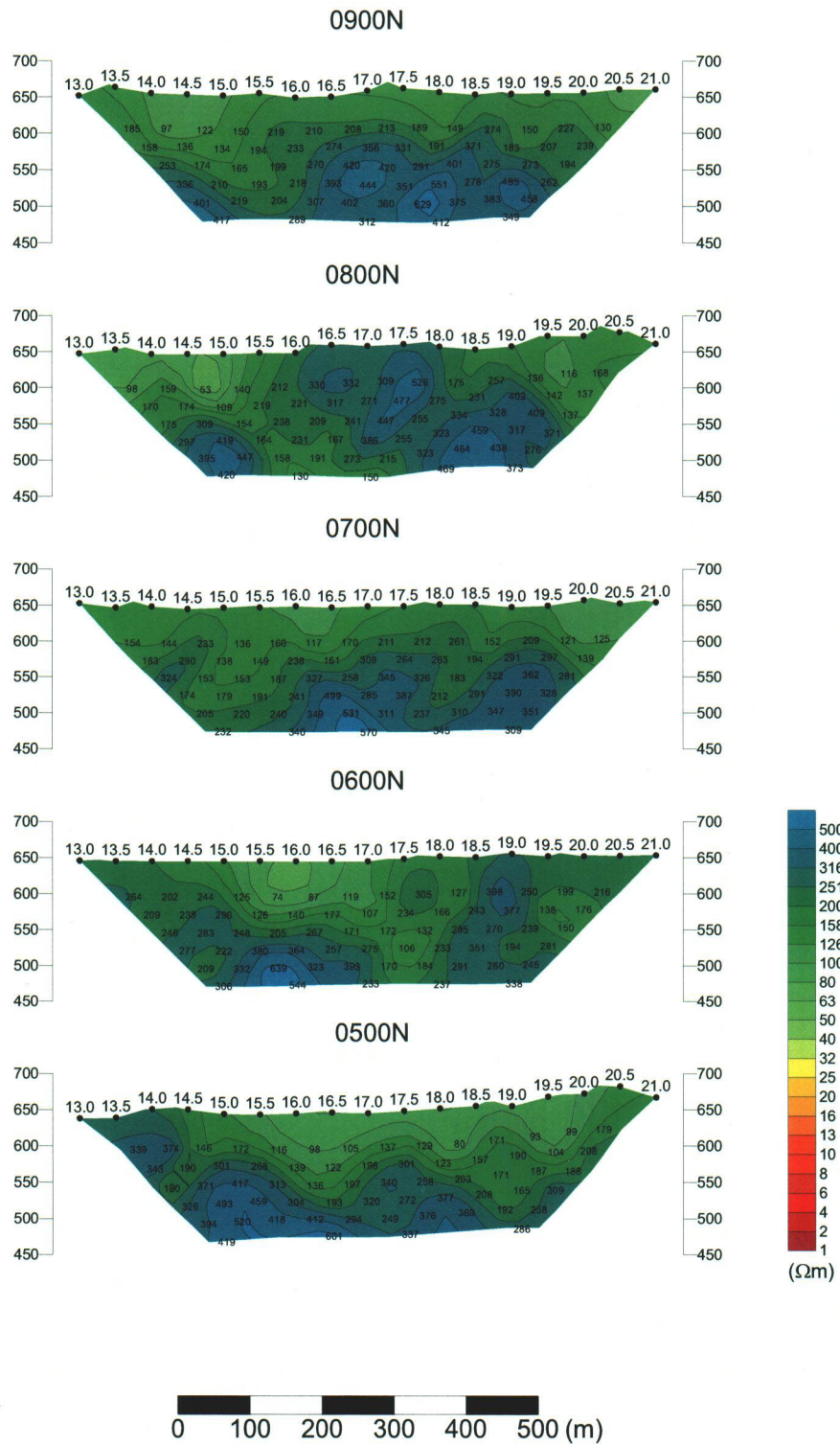


Fig. II -2-37(1) Apparent resistivity pseudo-sections of E-W lines in Najaid area

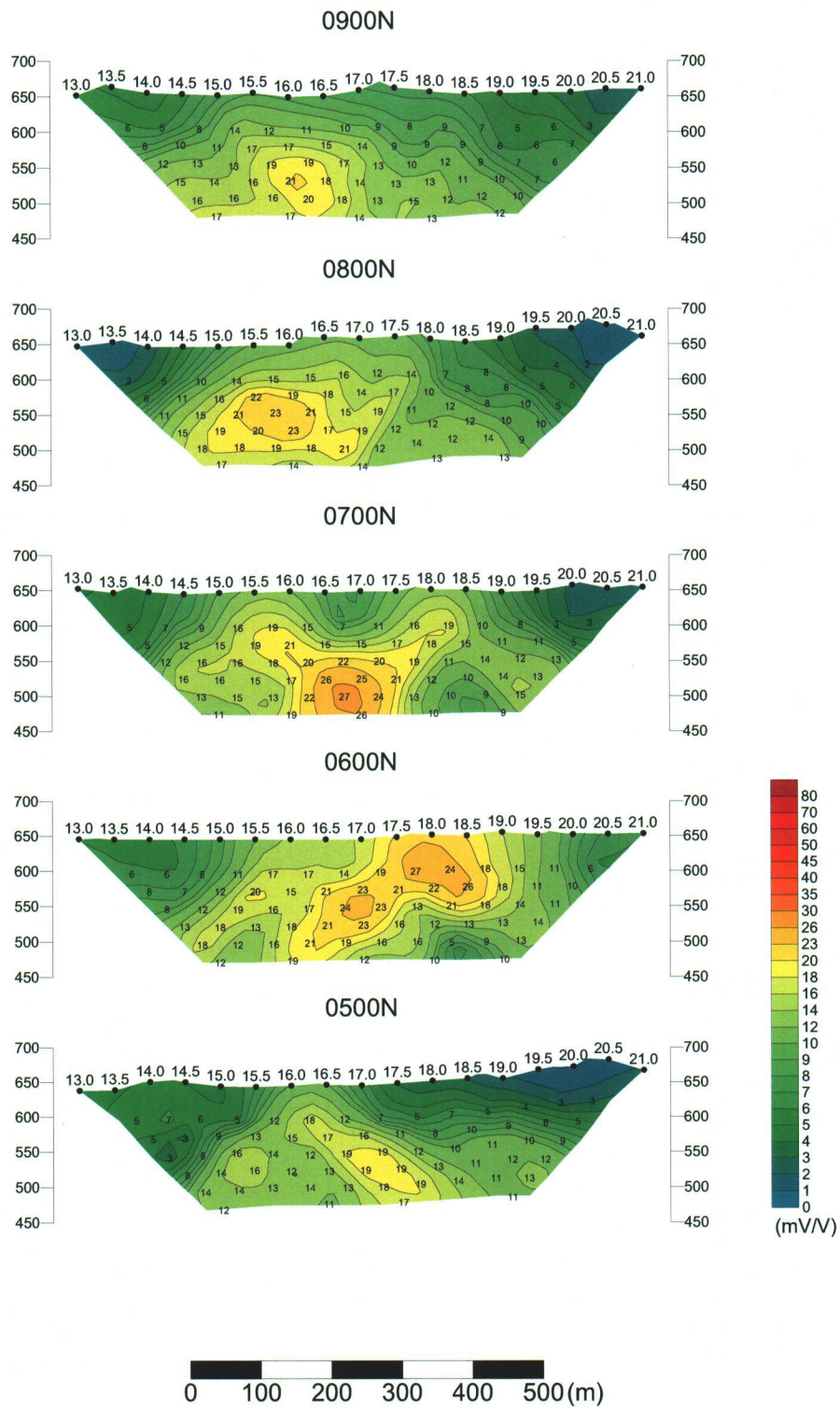


Fig. II -2-37(2) Chargeability pseudo-sections of E-W lines in Najaid area



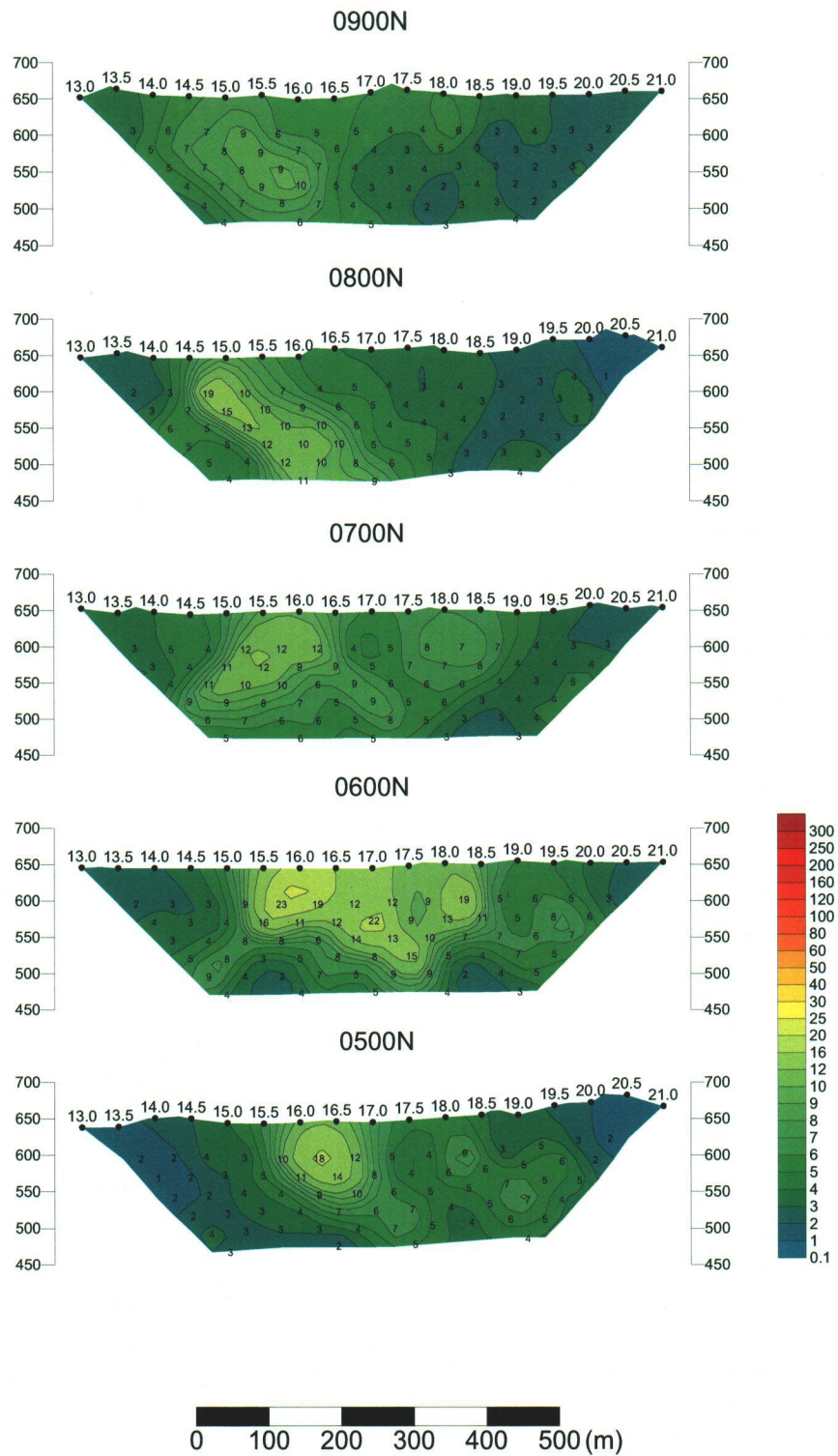


Fig. II -2-37(3) Metal factor pseudo-sections of E-W lines in Najaid area

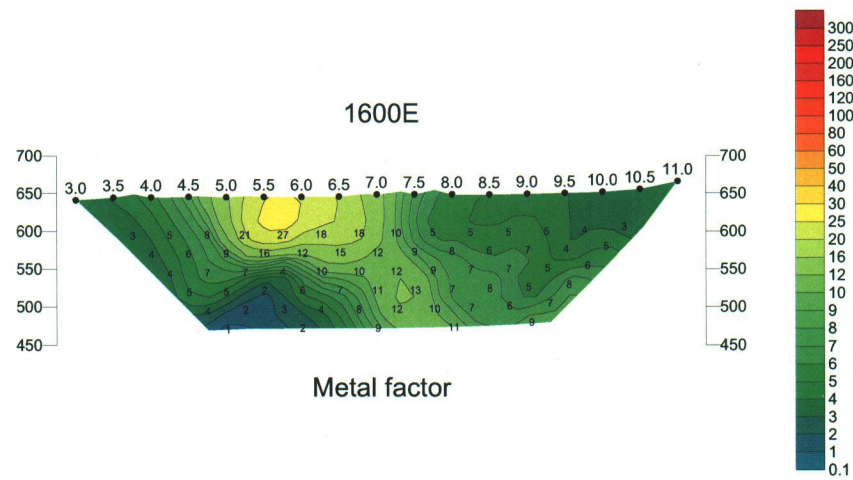
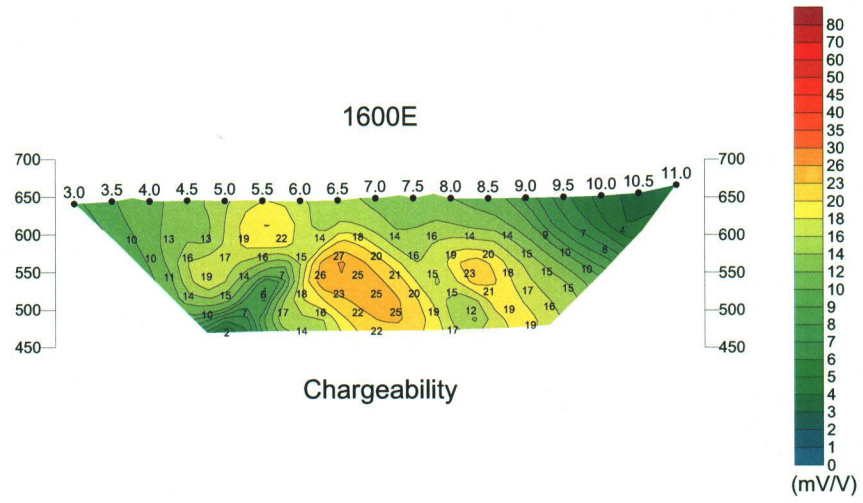
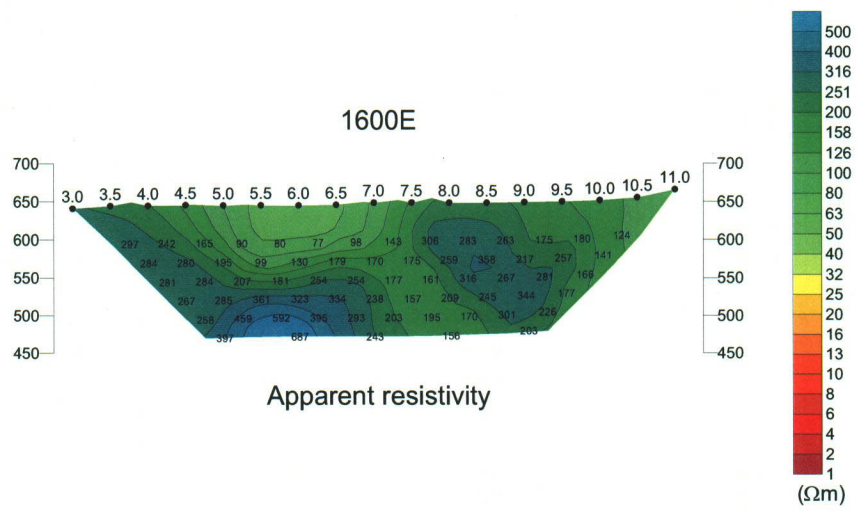


Fig. II -2-37(4) TDIP pseudo-sections of N-S lines in Najaid area