

Fig. II -2-33(1) TDIP plane maps for N=1 in Hayl as Safil area



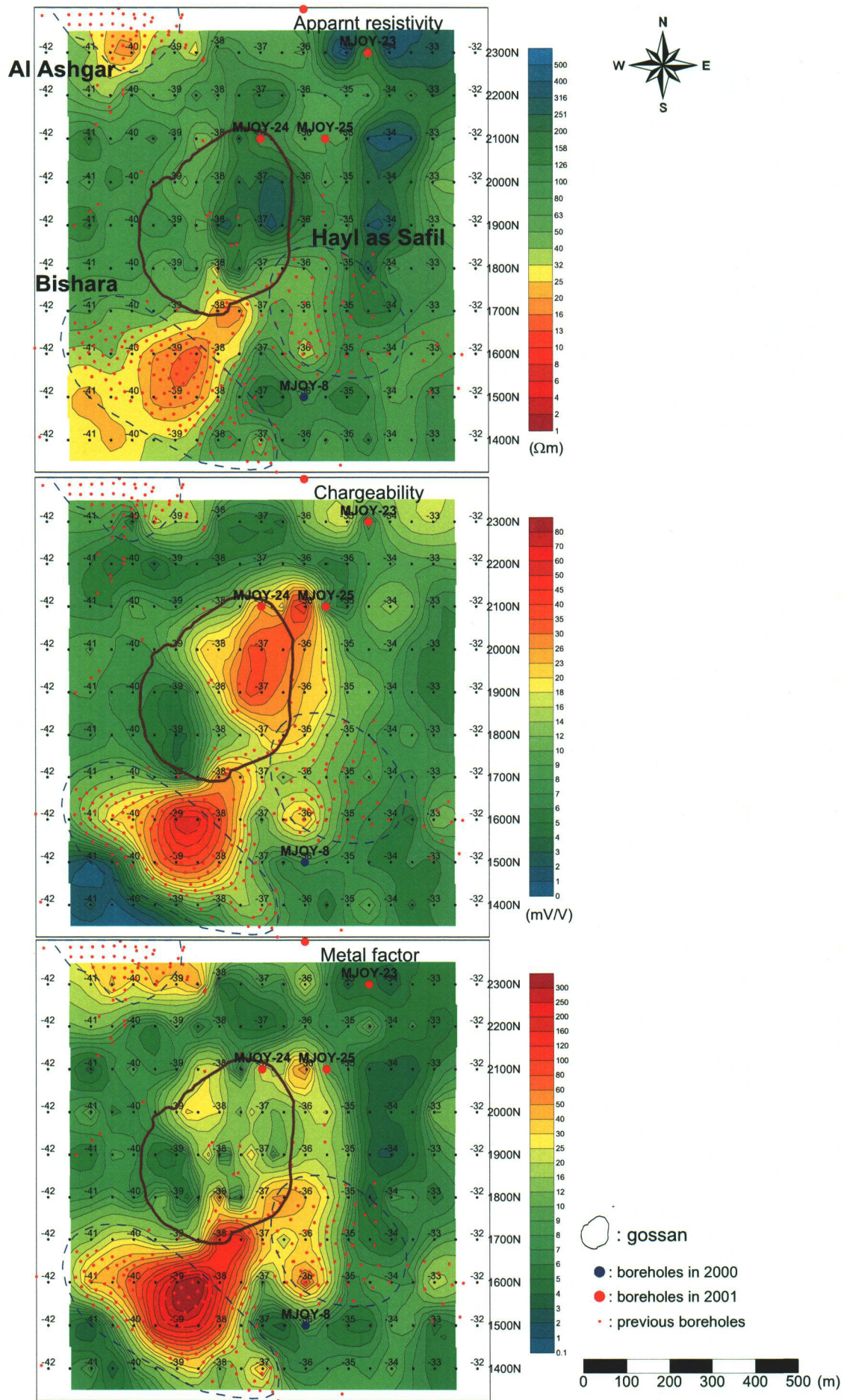


Fig. II -2-33(2) TDIP plane maps for N=2 in Hayl as Safil area



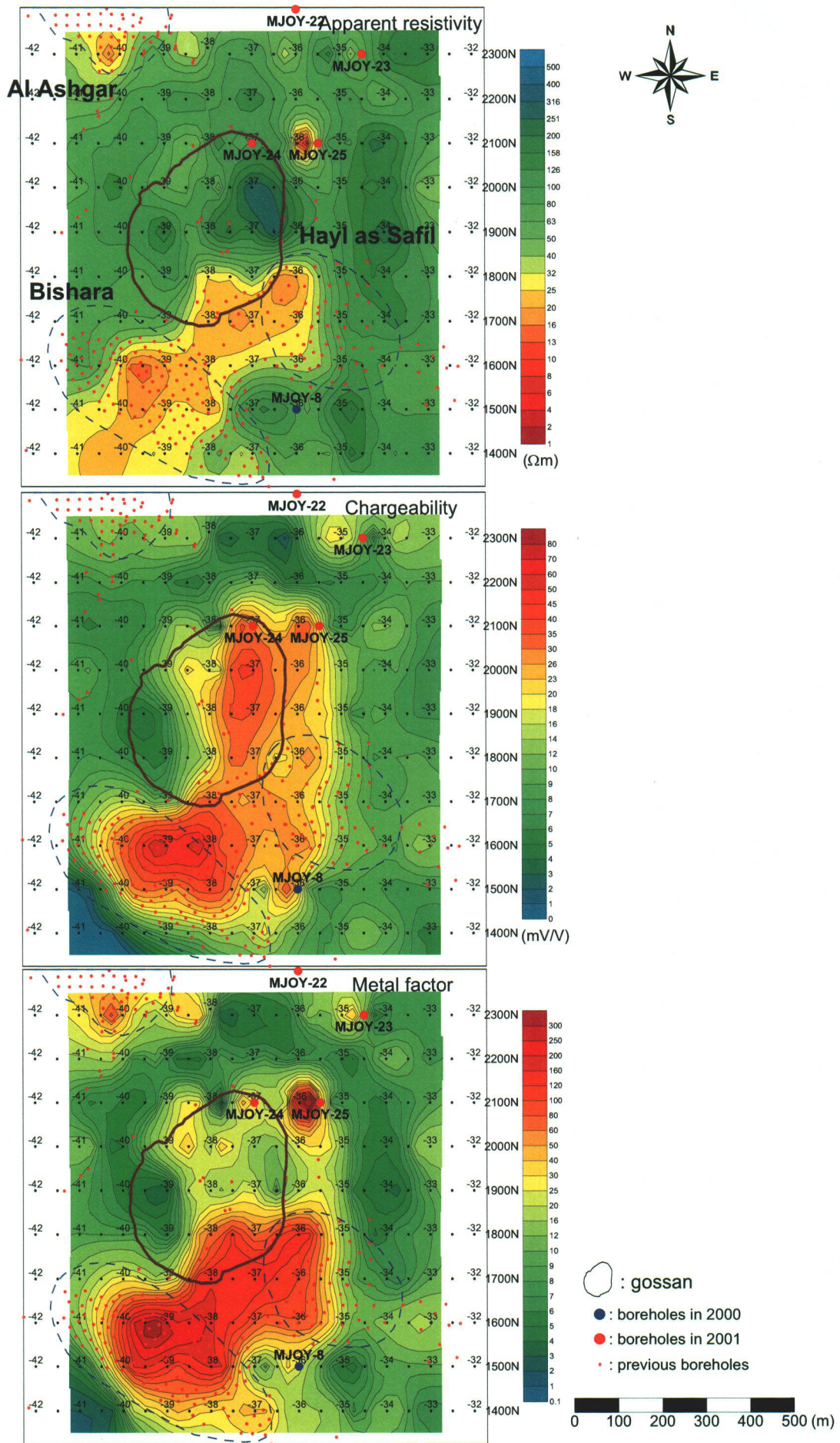


Fig. II -2-33(3) TDIP plane maps for N=3 in Hayl as Safil area



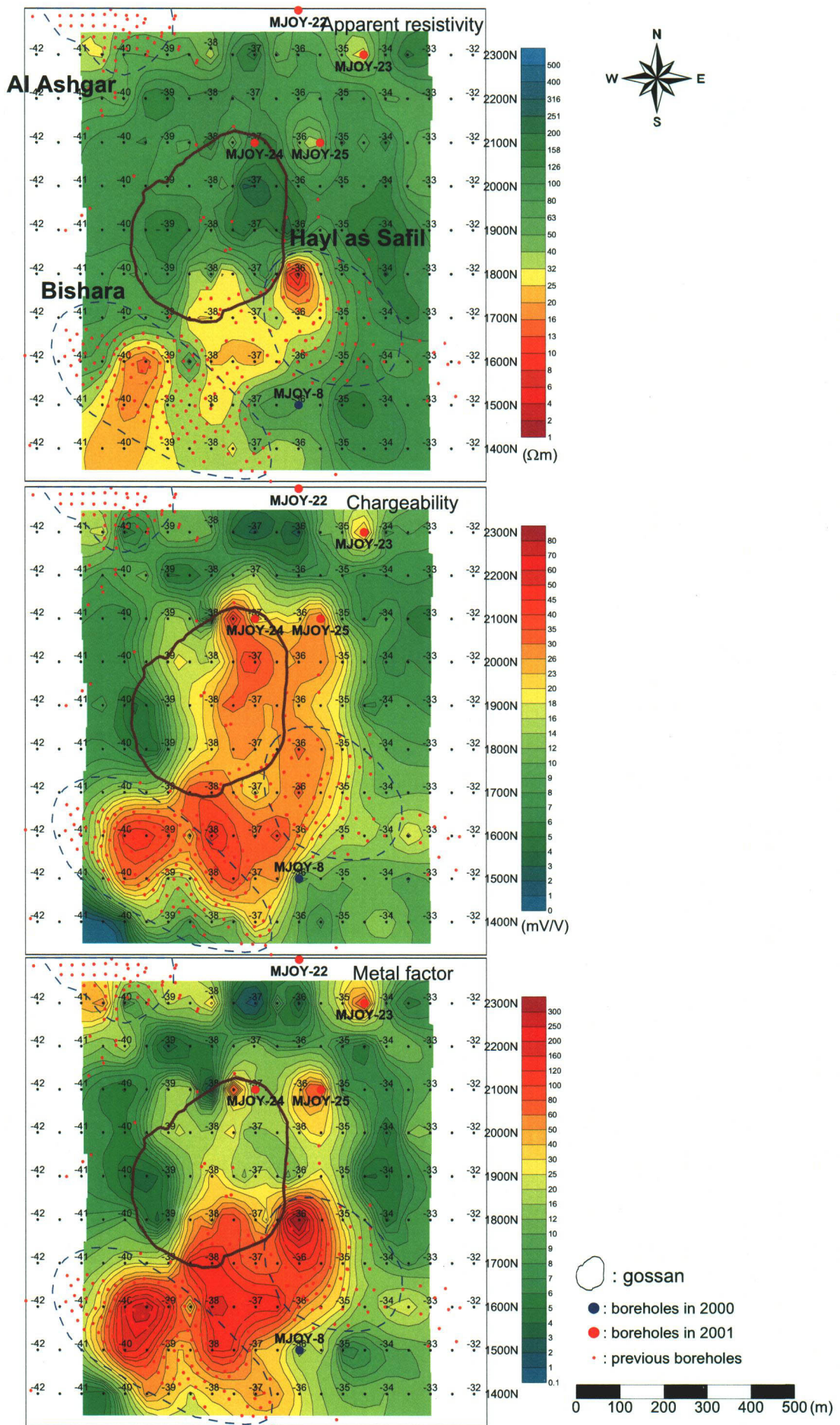


Fig. II -2-33(4) TDIP plane maps for N=4 in Hayl as Safil area



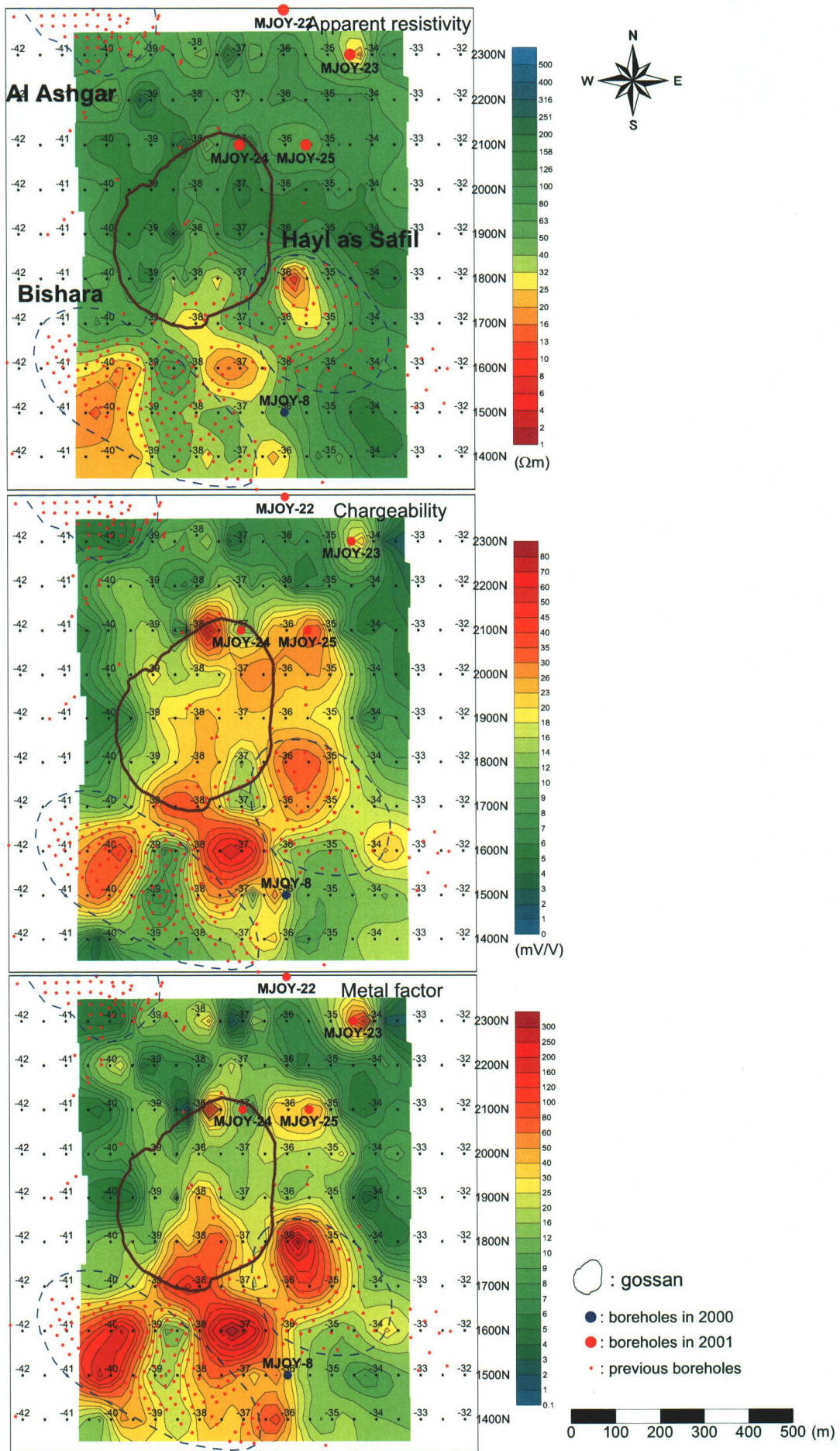


Fig. II -2-33(5) TDIP plane maps for N=5 in Hayl as Safil area



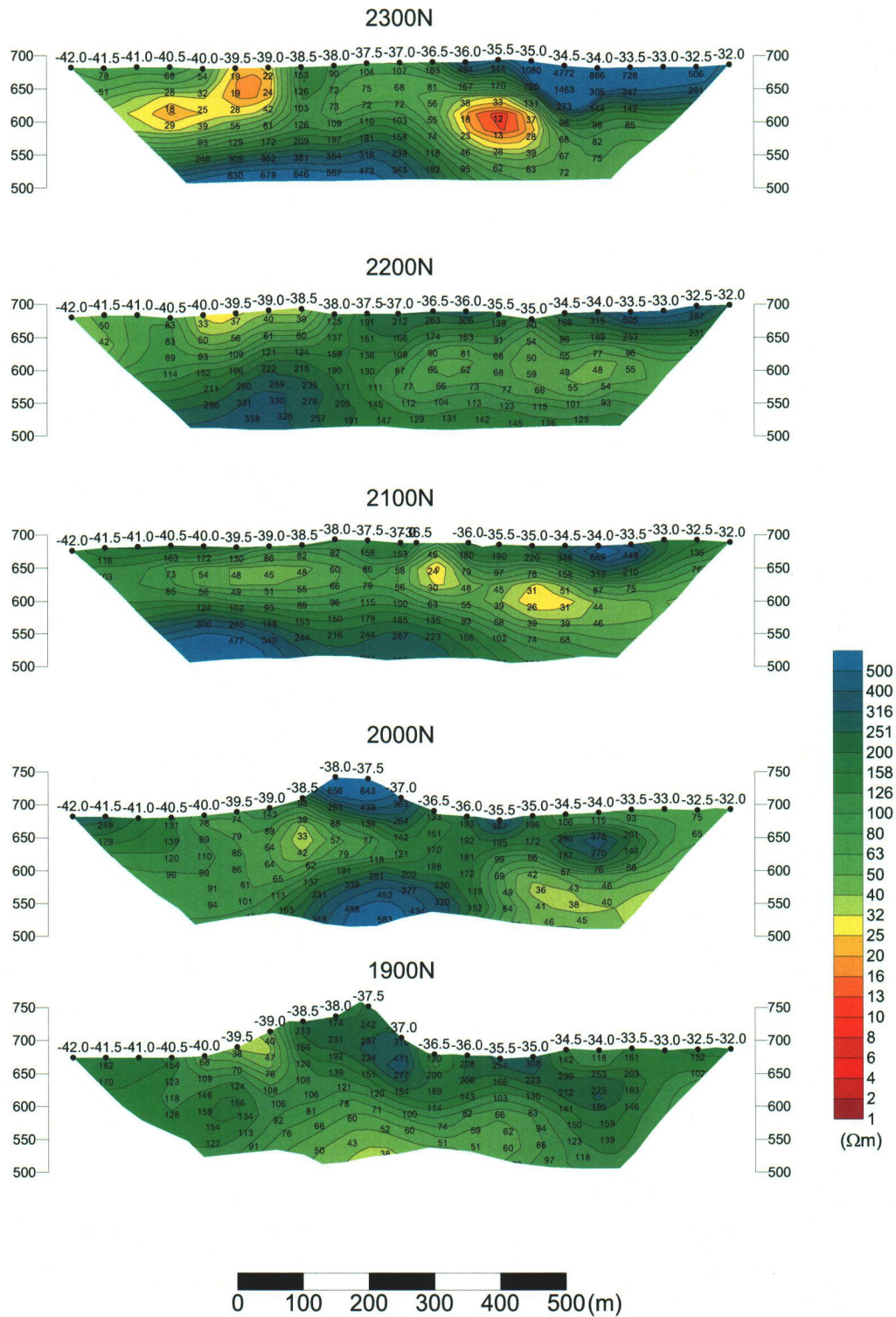


Fig. II -2-34(1) 2D analysis sections for resistivity in Hayl as Safil area(2300N – 1900N)



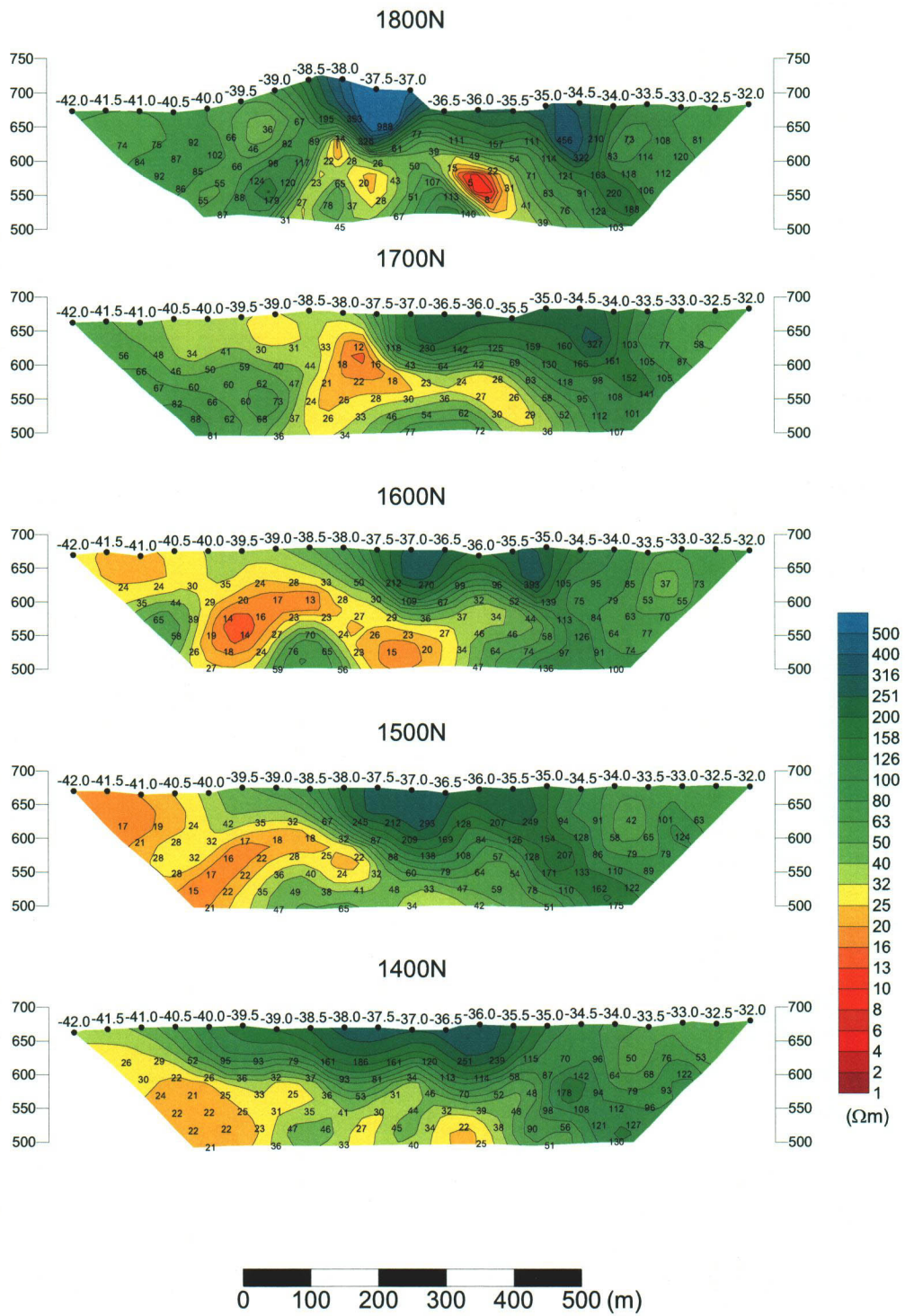


Fig. II -2-34(2) 2D analysis sections for resistivity in Hayl as Safil area(1800N – 1400N)



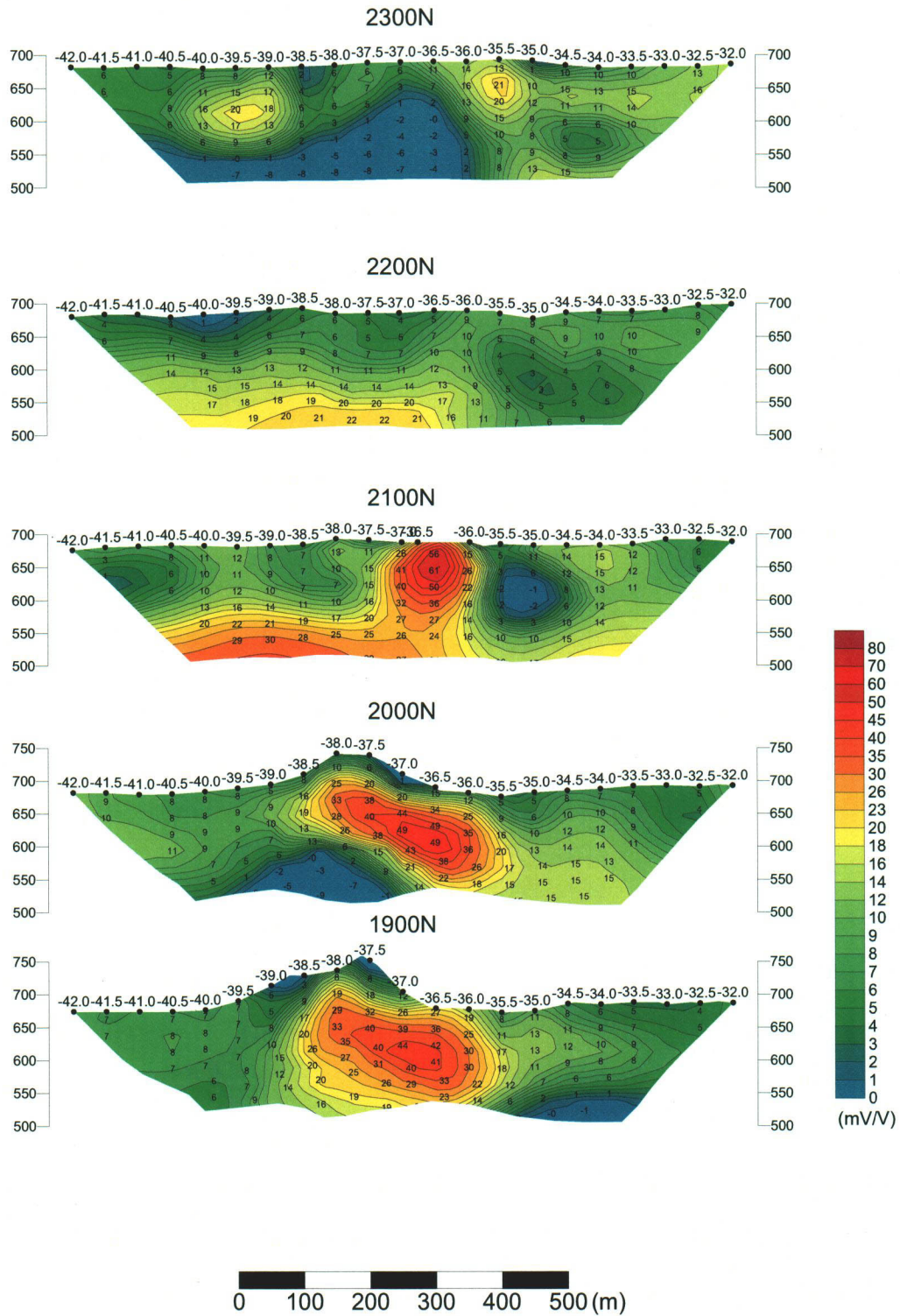


Fig. II -2-34(3) 2D analysis sections for chargeability in Hayl as Safil area(2300N – 1900N)



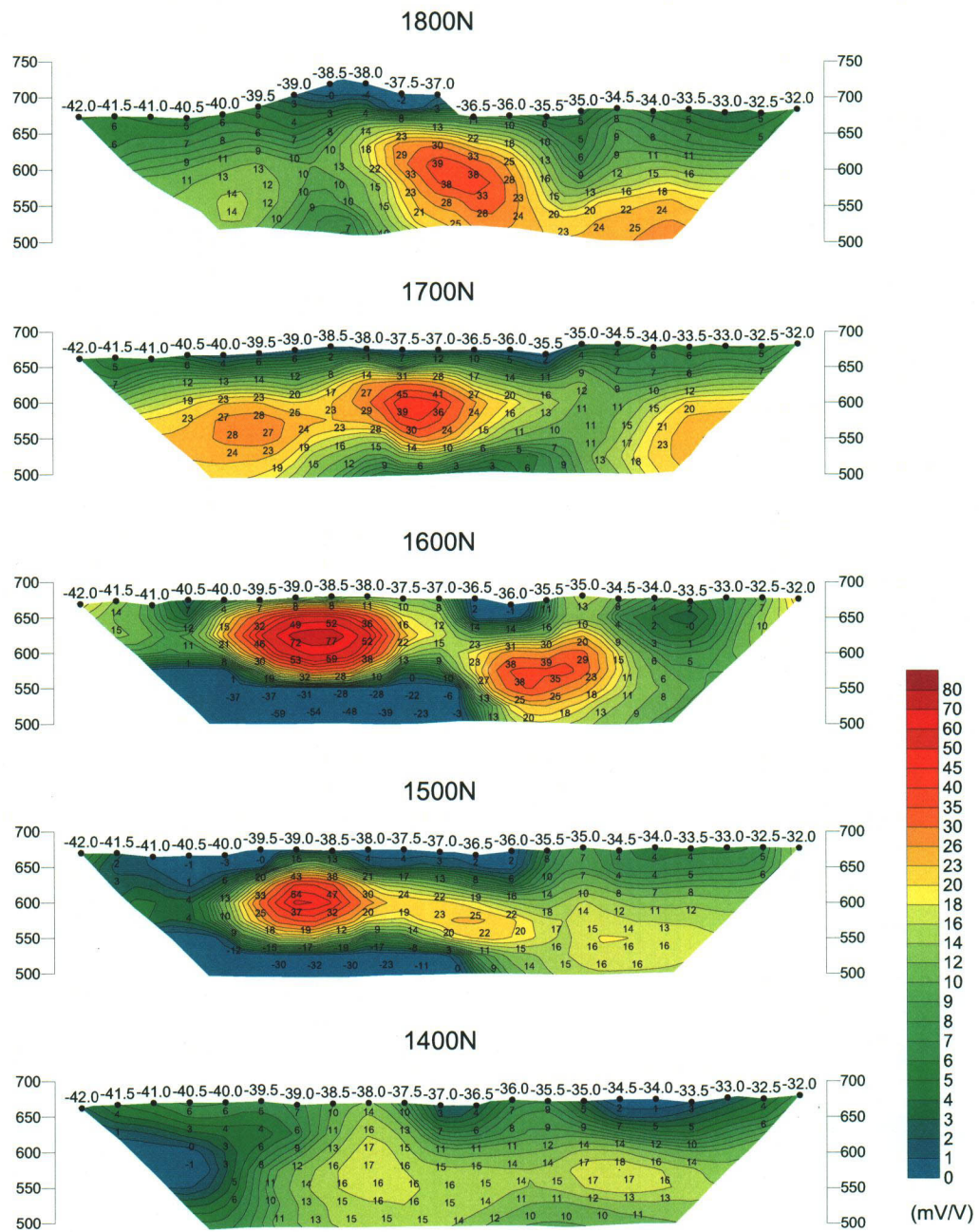


Fig. II -2-34(4) 2D analysis sections for chageability in Hayl as Safil area(1800N – 1400N)

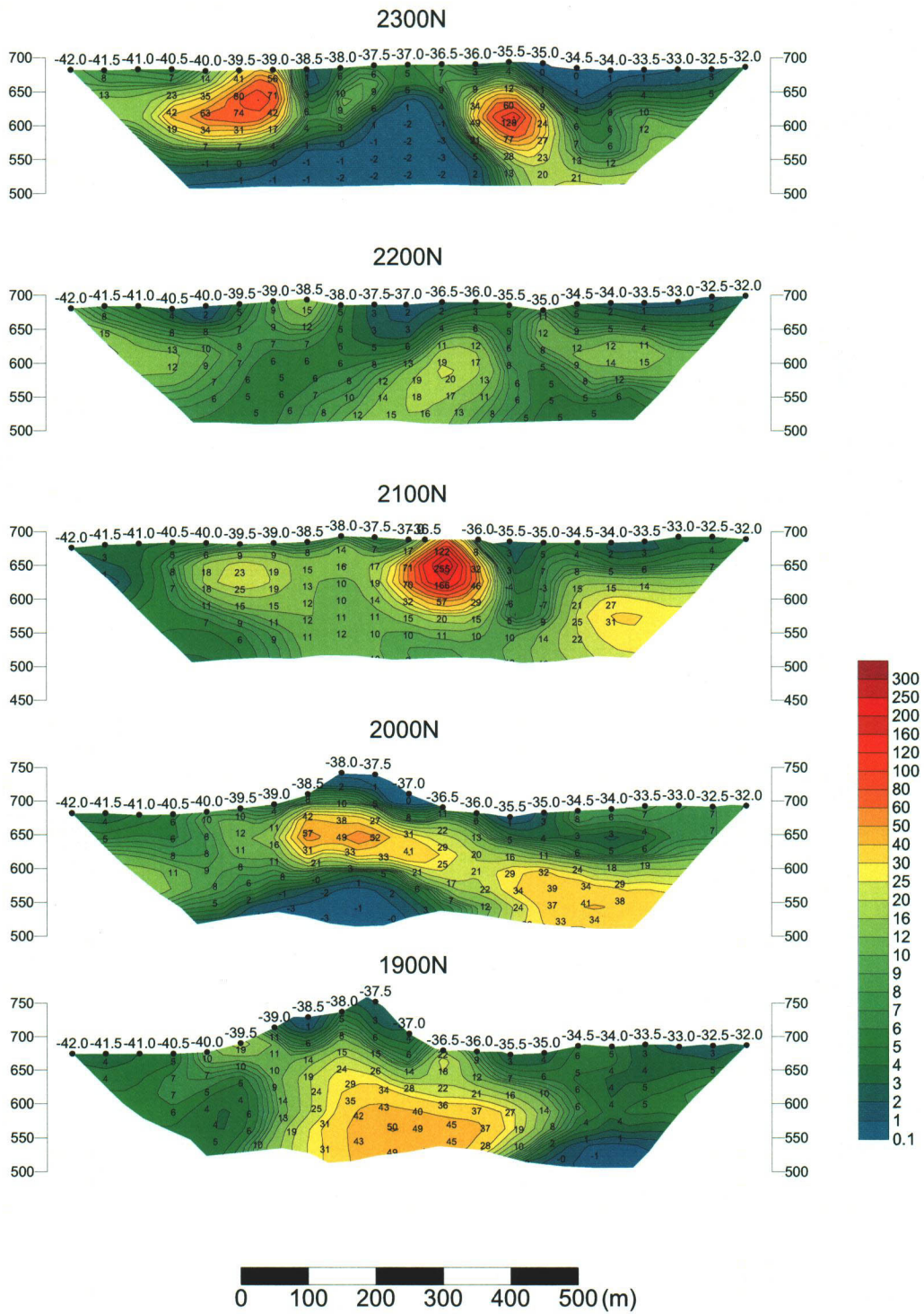


Fig. II -2-34(5) 2D analysis sections for metal factor in Hayl as Safil area(2300N – 1900N)



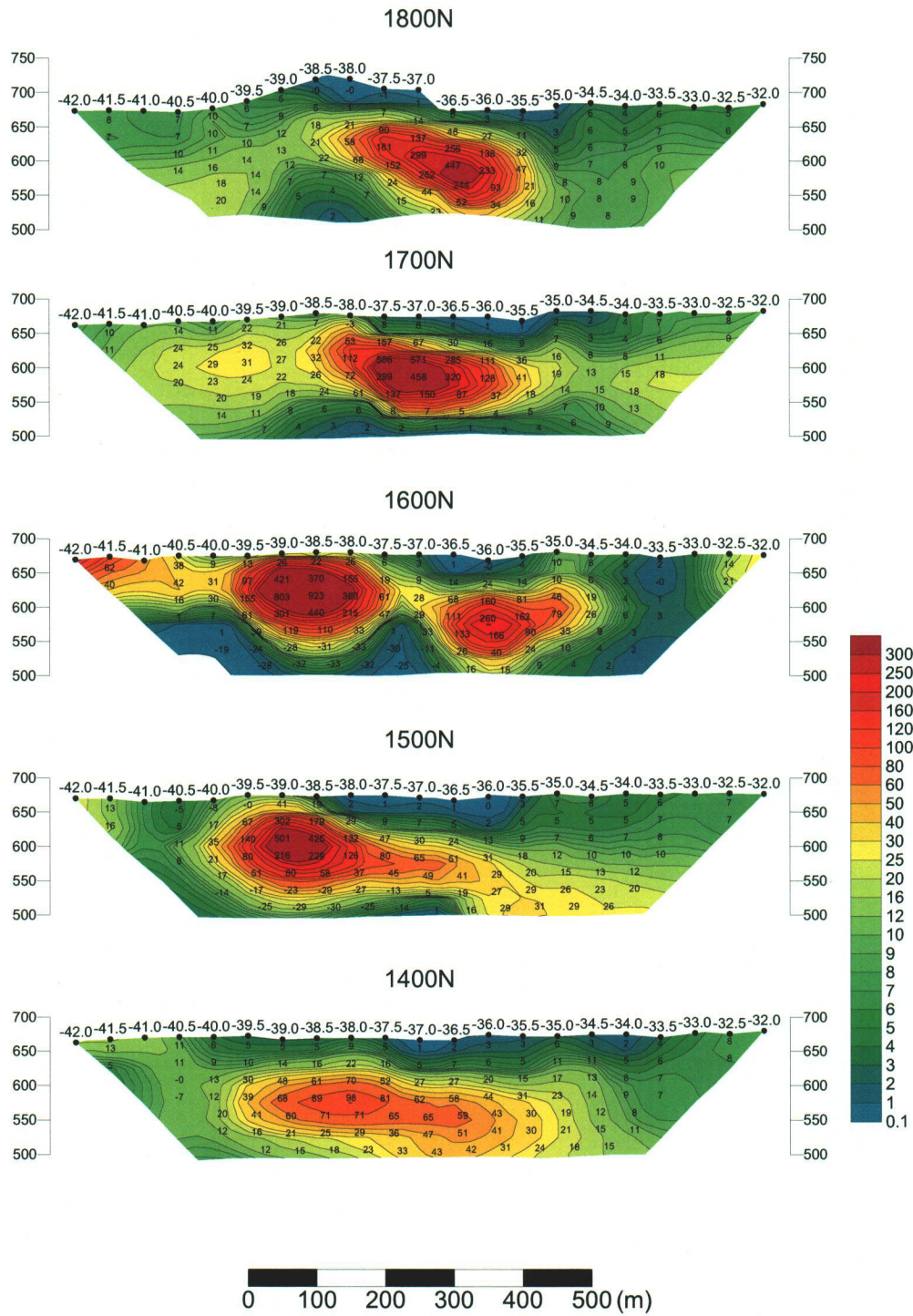


Fig. II -2-34(6) 2D analysis scitons for metal factor in Hayl as Safil area(1800N – 1400N)

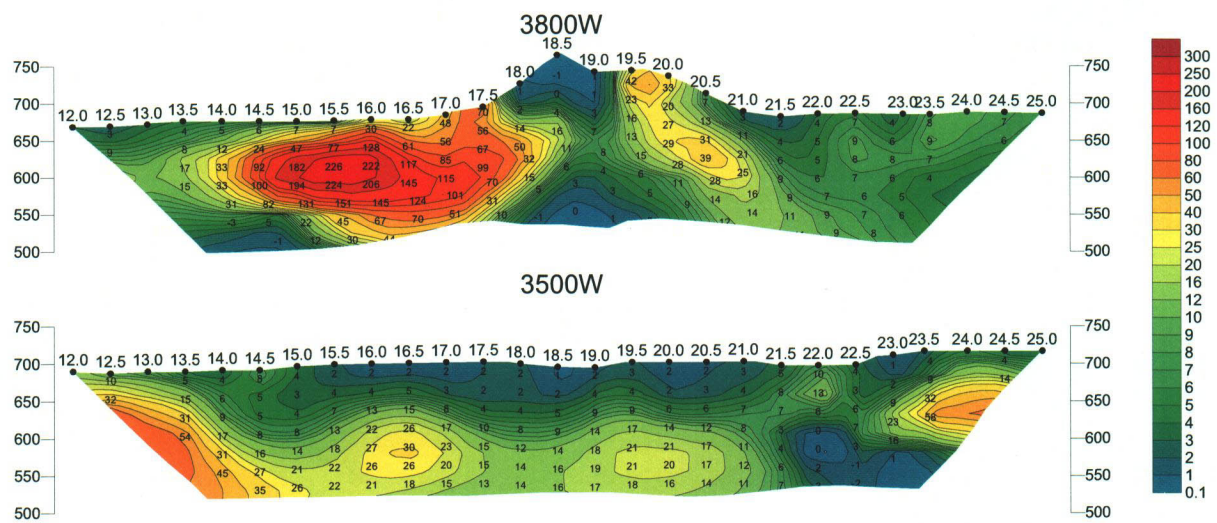
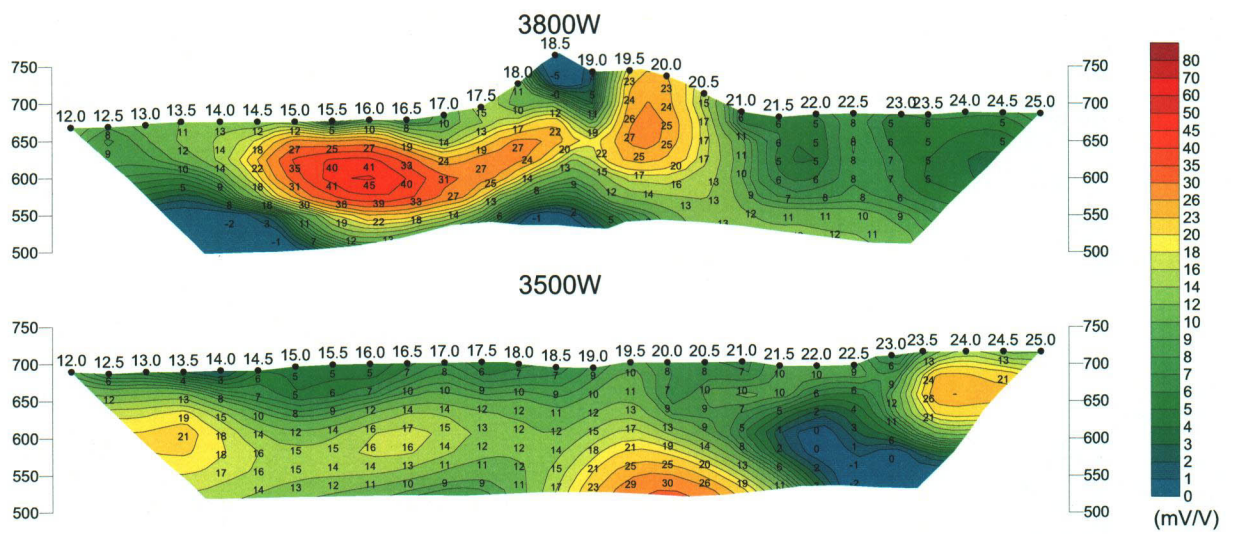
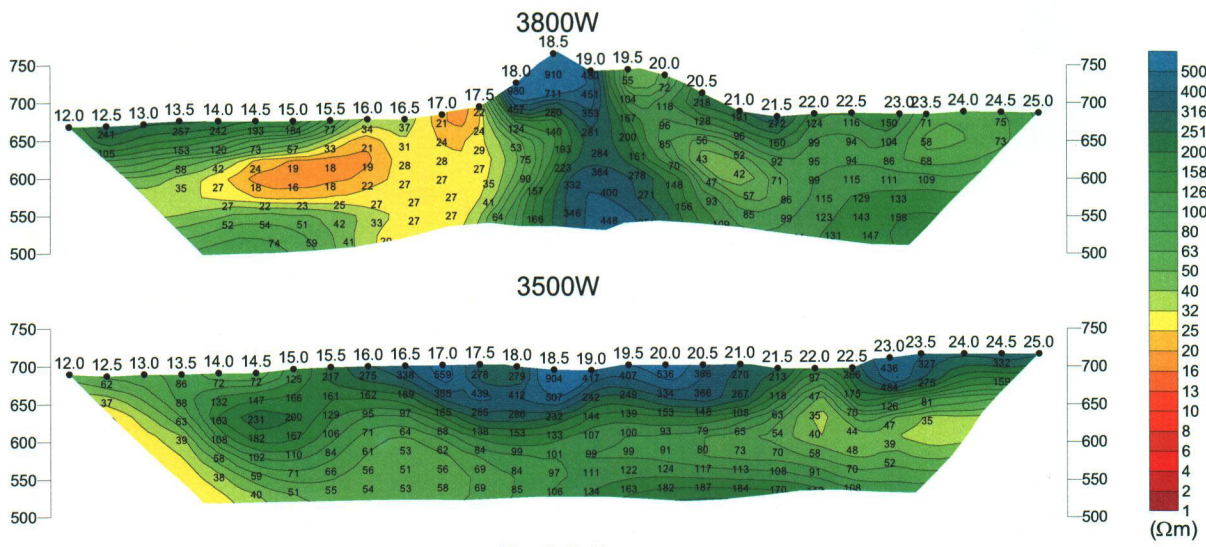


Fig. II -2-34(7) 2D analysis sections of N-S lines in Hayl as Safil area